

Data Path : P:\HPCHEM1\ECD O\Data\PO030218\
 Data File : PO042726.D
 Signal(s) : Signal #1: ECD1A.CH Signal #2: ECD2B.CH
 Acq On : 01 Mar 2018 14:30
 Operator : SM/UA
 Sample : J1399-09RE
 Misc :
 ALS Vial : 5 Sample Multiplier: 1

Instrument :
 ECD_O
ClientSampleId :
 OR-03-022718-ARE

Manual Integrations
APPROVED
 ugo
 3/2/2018 4:58:36 PM

Integration File signal 1: autoint1.e
 Integration File signal 2: autoint2.e
 Quant Time: Mar 01 22:03:22 2018
 Quant Method : P:\HPCHEM1\ECD_O\methods\PO022118.M
 Quant Title : GC EXTRACTABLES
 QLast Update : Mon Feb 26 14:24:10 2018
 Response via : Initial Calibration
 Integrator: ChemStation 6890 Scale Mode: Small noise peaks clipped

Volume Inj. : 2 µl
 Signal #1 Phase : ZB-MR1 Signal #2 Phase: ZB-MR2
 Signal #1 Info : 30Mx0.32mmx 0.50µ Signal #2 Info : 30M x 0.32mm x 0.25µm

Compound	RT#1	RT#2	Resp#1	Resp#2	nq/ml	nq/ml

System Monitoring Compounds						
1) SA Tetrachlo...	4.096	3.346	3636763	4861627	14.681	13.156m
2) SA Decachlor...	9.474	8.127	2028613	1883453	8.027	4.884 #

Target Compounds

 (f)=RT Delta > 1/2 Window (#)=Amounts differ by > 25% (m)=manual int.

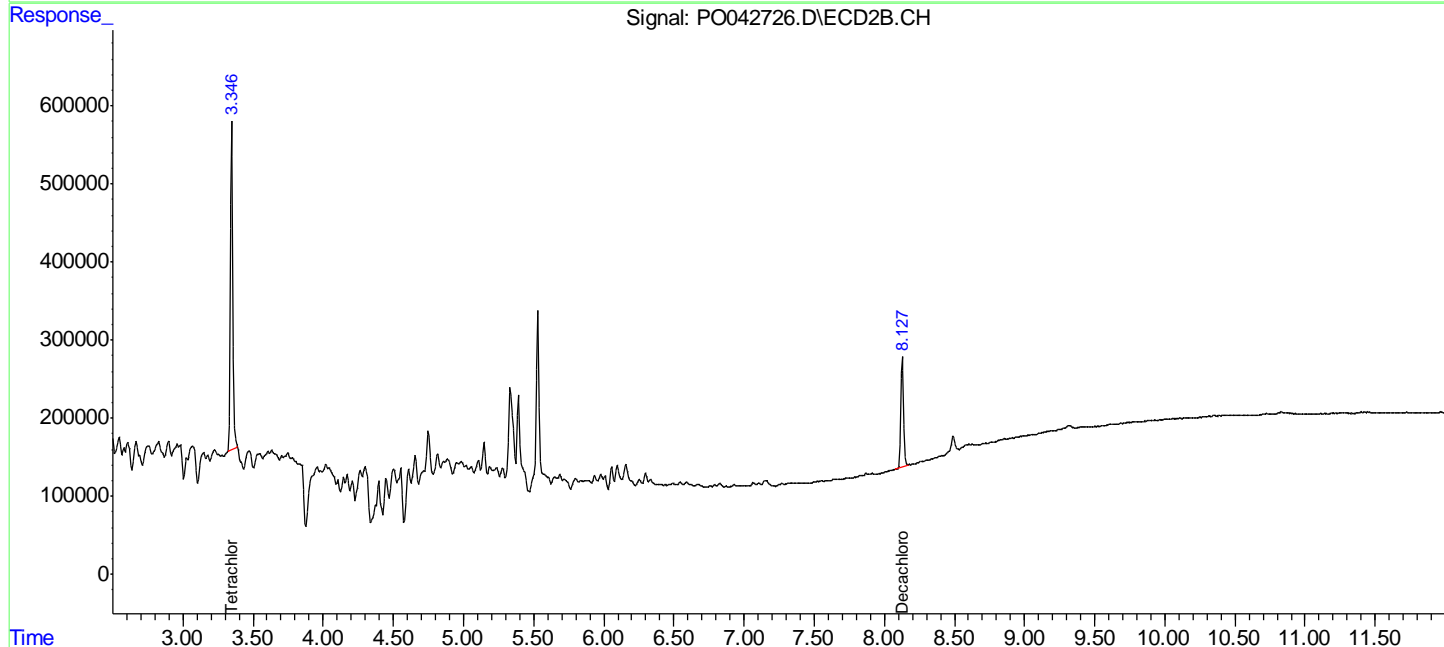
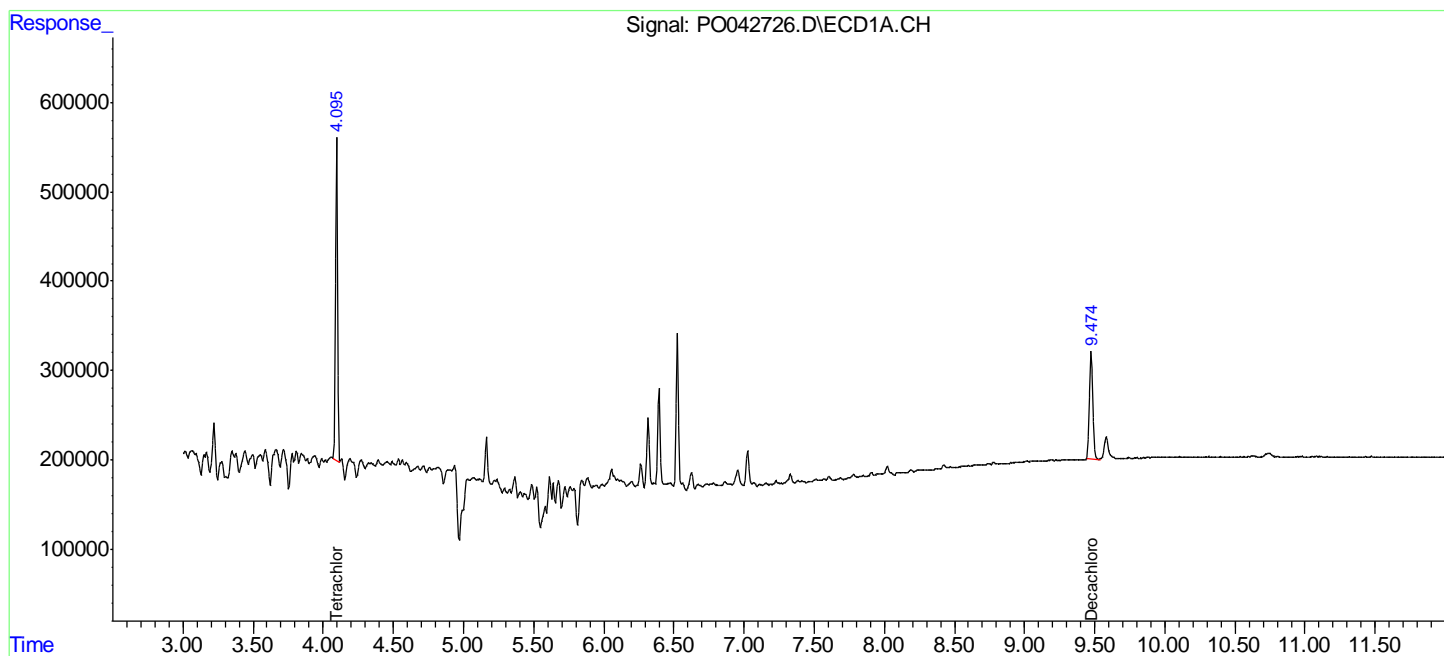
Data Path : P:\HPCHEM1\ECD O\Data\PO030218\
 Data File : PO042726.D
 Signal(s) : Signal #1: ECD1A.CH Signal #2: ECD2B.CH
 Acq On : 01 Mar 2018 14:30
 Operator : SM/UA
 Sample : J1399-09RE
 Misc :
 ALS Vial : 5 Sample Multiplier: 1

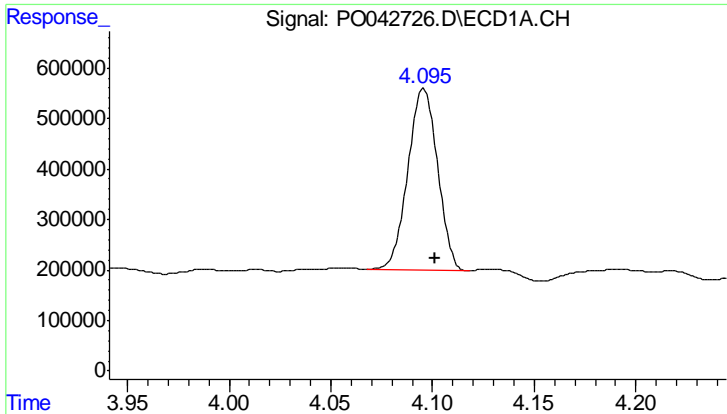
Instrument :
 ECD_O
 ClientSampleId :
 OR-03-022718-ARE

Manual Integrations
APPROVED
 ugo
 3/2/2018 4:58:36 PM

Integration File signal 1: autoint1.e
 Integration File signal 2: autoint2.e
 Quant Time: Mar 01 22:03:22 2018
 Quant Method : P:\HPCHEM1\ECD_O\methods\PO022118.M
 Quant Title : GC EXTRACTABLES
 QLast Update : Mon Feb 26 14:24:10 2018
 Response via : Initial Calibration
 Integrator: ChemStation 6890 Scale Mode: Small noise peaks clipped

Volume Inj. : 2 ul
 Signal #1 Phase : ZB-MR1 Signal #2 Phase: ZB-MR2
 Signal #1 Info : 30Mx0.32mmx 0.50µ Signal #2 Info : 30M x 0.32mm x 0.25µm



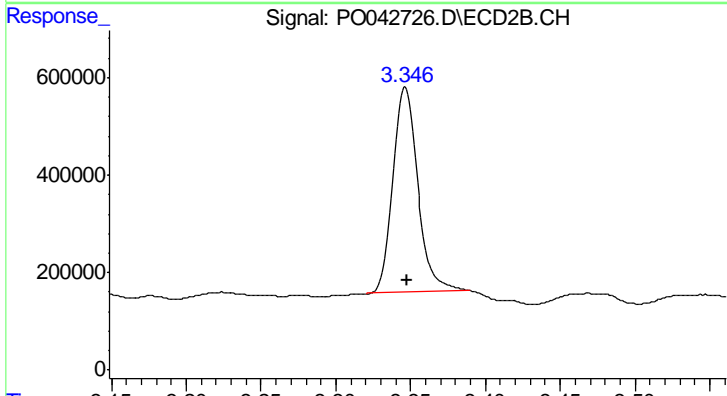


#1 Tetrachloro-m-xylene

R.T.: 4.096 min
 Delta R.T.: -0.006 min
 Response: 3636763
 Conc: 14.68 ng/ml

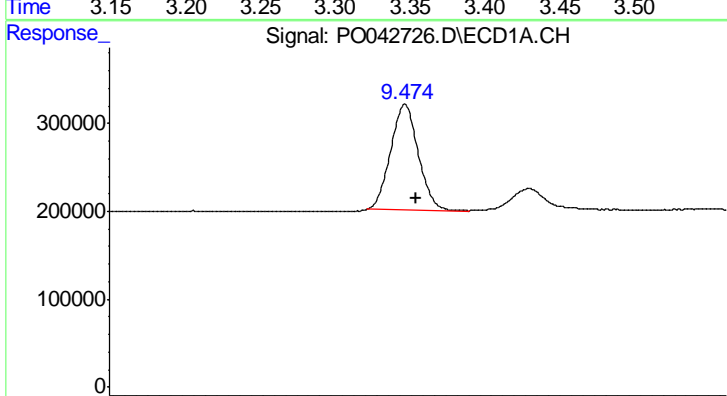
Instrument :
 ECD_O
 ClientSampleId :
 OR-03-022718-ARE

Manual Integrations
 APPROVED
 ugo
 3/2/2018 4:58:36 PM



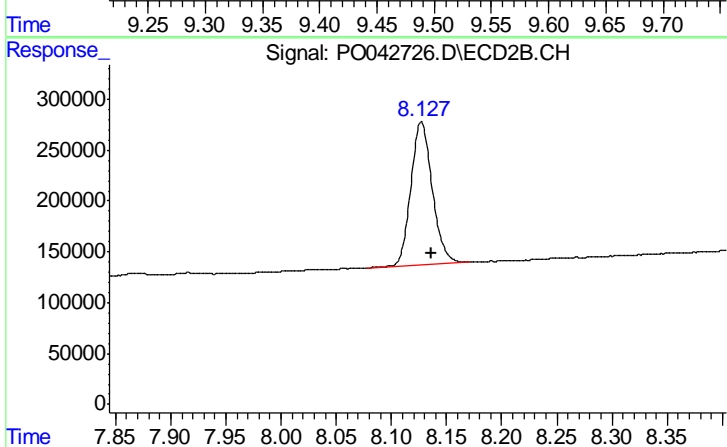
#1 Tetrachloro-m-xylene

R.T.: 3.346 min
 Delta R.T.: -0.002 min
 Response: 4861627
 Conc: 13.16 ng/ml m



#2 Decachlorobiphenyl

R.T.: 9.474 min
 Delta R.T.: -0.010 min
 Response: 2028613
 Conc: 8.03 ng/ml



#2 Decachlorobiphenyl

R.T.: 8.127 min
 Delta R.T.: -0.009 min
 Response: 1883453
 Conc: 4.88 ng/ml