

Data Path : P:\HPCHEM1\ECD O\Data\PO030218\
 Data File : PO042729.D
 Signal(s) : Signal #1: ECD1A.CH Signal #2: ECD2B.CH
 Acq On : 01 Mar 2018 15:15
 Operator : SM/UA
 Sample : J1686-01
 Misc :
 ALS Vial : 12 Sample Multiplier: 1

Instrument :
 ECD_O
 ClientSampleId :
 T4-CONCRETE

Integration File signal 1: autoint1.e
 Integration File signal 2: autoint2.e
 Quant Time: Mar 01 22:06:33 2018
 Quant Method : P:\HPCHEM1\ECD_O\methods\PO022118.M
 Quant Title : GC EXTRACTABLES
 QLast Update : Mon Feb 26 14:24:10 2018
 Response via : Initial Calibration
 Integrator: ChemStation 6890 Scale Mode: Small noise peaks clipped

Volume Inj. : 2 µl
 Signal #1 Phase : ZB-MR1 Signal #2 Phase: ZB-MR2
 Signal #1 Info : 30Mx0.32mmx 0.50µ Signal #2 Info : 30M x 0.32mm x 0.25µm

Compound	RT#1	RT#2	Resp#1	Resp#2	nq/ml	nq/ml

System Monitoring Compounds						
1) SA Tetrachlo...	4.097	3.348	5877703	8483804	23.727	22.958
2) SA Decachlor...	9.473	8.127	3091124	3016797	12.231	7.823 #

Target Compounds

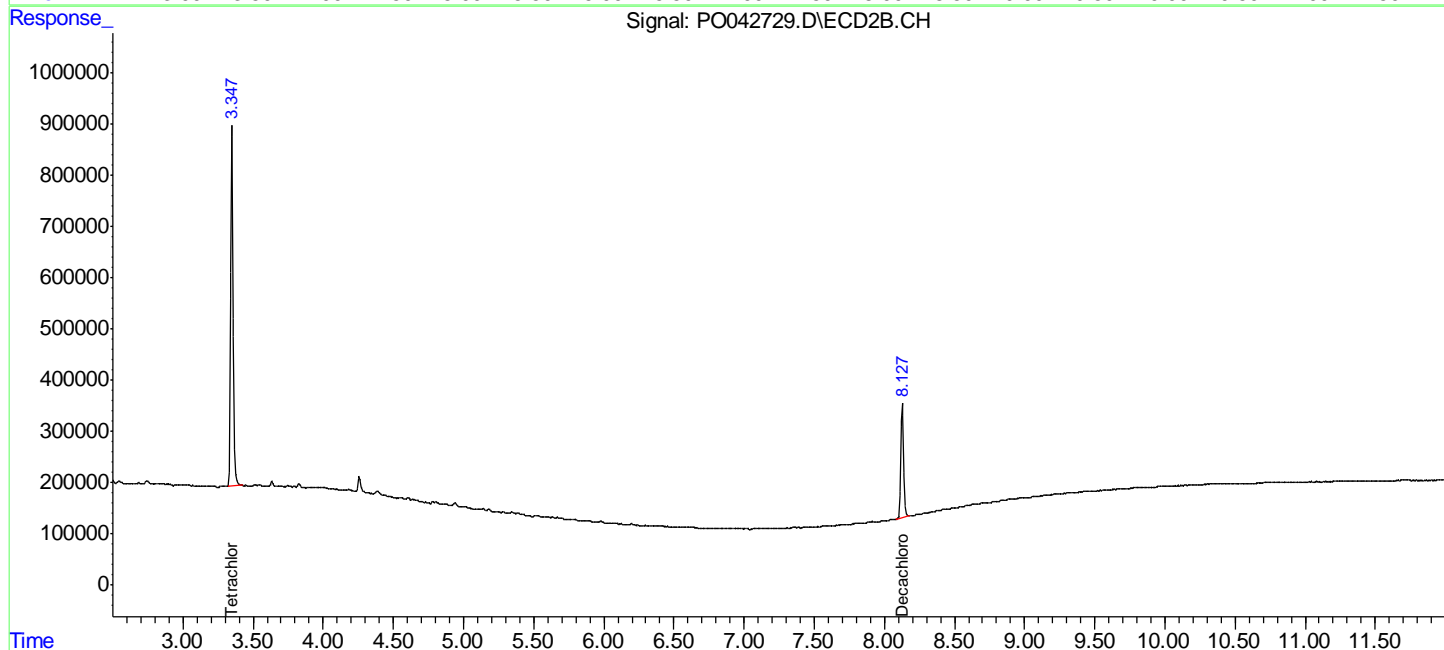
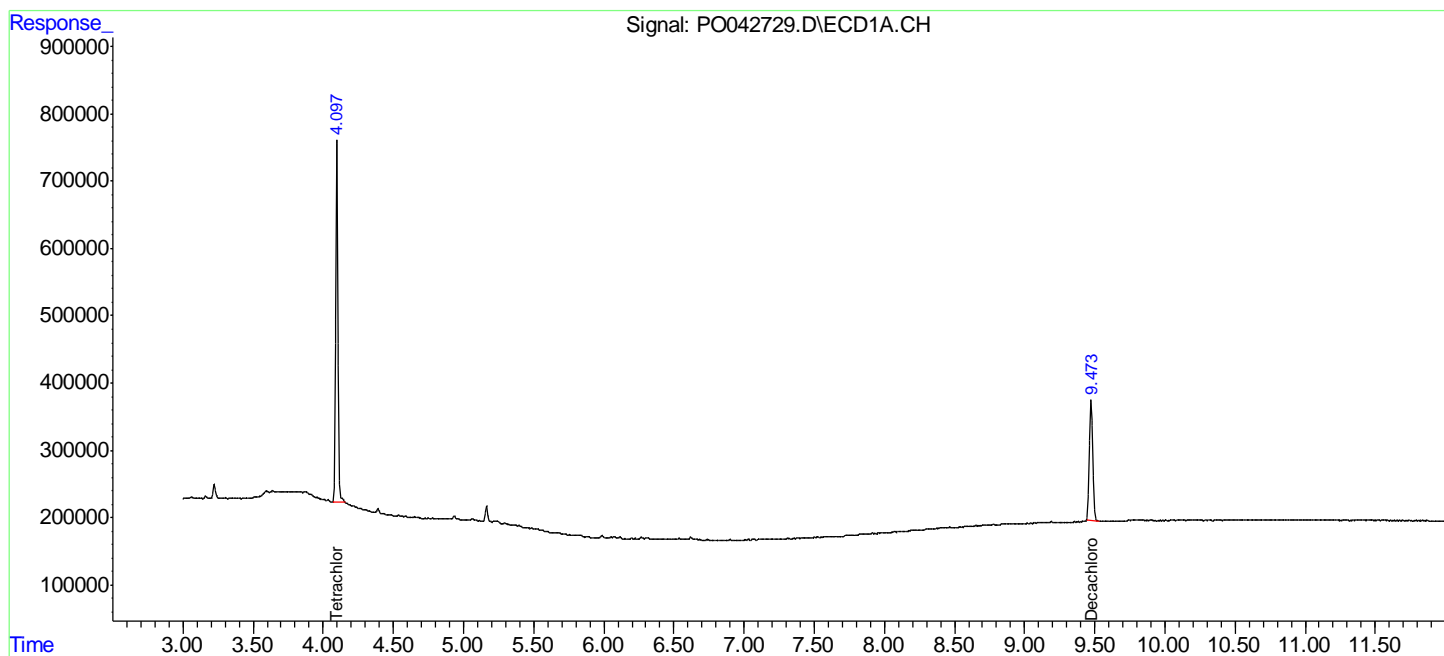
 (f)=RT Delta > 1/2 Window (#)=Amounts differ by > 25% (m)=manual int.

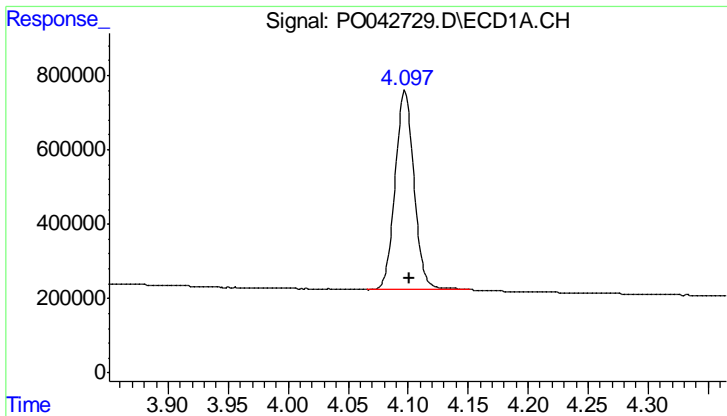
Data Path : P:\HPCHEM1\ECD O\Data\PO030218\
 Data File : PO042729.D
 Signal(s) : Signal #1: ECD1A.CH Signal #2: ECD2B.CH
 Acq On : 01 Mar 2018 15:15
 Operator : SM/UA
 Sample : J1686-01
 Misc :
 ALS Vial : 12 Sample Multiplier: 1

Instrument :
 ECD_O
 ClientSampleId :
 T4-CONCRETE

Integration File signal 1: autoint1.e
 Integration File signal 2: autoint2.e
 Quant Time: Mar 01 22:06:33 2018
 Quant Method : P:\HPCHEM1\ECD_O\methods\PO022118.M
 Quant Title : GC EXTRACTABLES
 QLast Update : Mon Feb 26 14:24:10 2018
 Response via : Initial Calibration
 Integrator: ChemStation 6890 Scale Mode: Small noise peaks clipped

Volume Inj. : 2 µl
 Signal #1 Phase : ZB-MR1 Signal #2 Phase: ZB-MR2
 Signal #1 Info : 30Mx0.32mmx 0.50µ Signal #2 Info : 30M x 0.32mm x 0.25µm

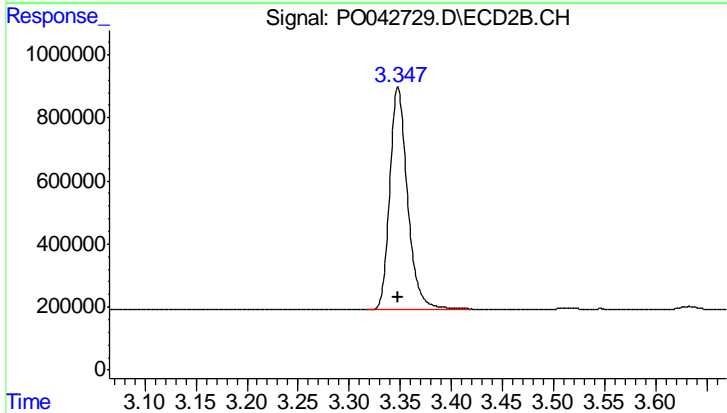




#1 Tetrachloro-m-xylene

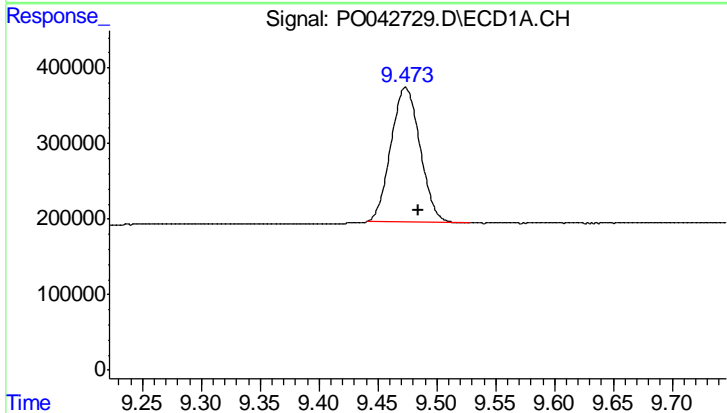
R.T.: 4.097 min
 Delta R.T.: -0.004 min
 Response: 5877703
 Conc: 23.73 ng/ml

Instrument :
 ECD_O
 ClientSampleId :
 T4-CONCRETE



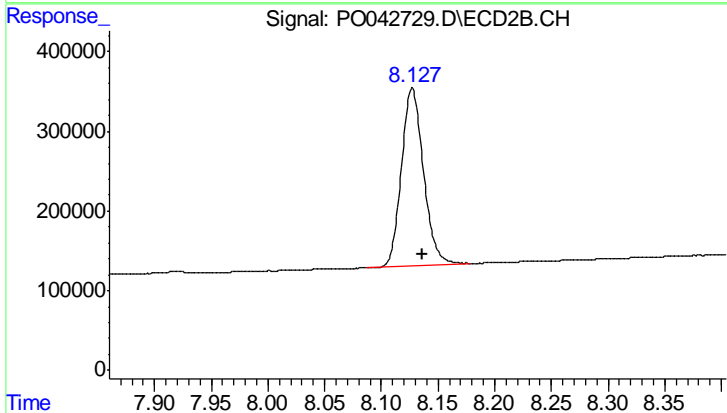
#1 Tetrachloro-m-xylene

R.T.: 3.348 min
 Delta R.T.: 0.000 min
 Response: 8483804
 Conc: 22.96 ng/ml



#2 Decachlorobiphenyl

R.T.: 9.473 min
 Delta R.T.: -0.011 min
 Response: 3091124
 Conc: 12.23 ng/ml



#2 Decachlorobiphenyl

R.T.: 8.127 min
 Delta R.T.: -0.009 min
 Response: 3016797
 Conc: 7.82 ng/ml