

Data Path : Z:\pestpcbsrv\HPCHEM1\ECD_O\Data\P0030223\
 Data File : P0092886.D
 Signal(s) : Signal #1: ECD1A.ch Signal #2: ECD2B.ch
 Acq On : 02 Mar 2023 10:33
 Operator : YP/AJ
 Sample : I.BLK
 Misc :
 ALS Vial : 2 Sample Multiplier: 1

Instrument :
 ECD_O
 ClientSampleId :
 I.BLK

Integration File signal 1: autoint1.e
 Integration File signal 2: autoint2.e
 Quant Time: Mar 02 14:19:20 2023
 Quant Method : Z:\pestpcbsrv\HPCHEM1\ECD_O\methods\P0022123.M
 Quant Title : GC EXTRACTABLES
 QLast Update : Wed Feb 22 05:46:11 2023
 Response via : Initial Calibration
 Integrator: ChemStation

Volume Inj. : 2 µl
 Signal #1 Phase : ZB-MR1 Signal #2 Phase: ZB-MR2
 Signal #1 Info : 30Mx0.32mmx 0.50µ Signal #2 Info : 30M x 0.32mm x 0.25µm

Compound	RT#1	RT#2	Resp#1	Resp#2	ng/ml	ng/ml

System Monitoring Compounds						
1) SA Tetrachlo...	4.433	3.638	63146081	23940800	21.029	18.782
2) SA Decachlor...	10.276	8.677	46737298	23165705	24.298	19.878

Target Compounds

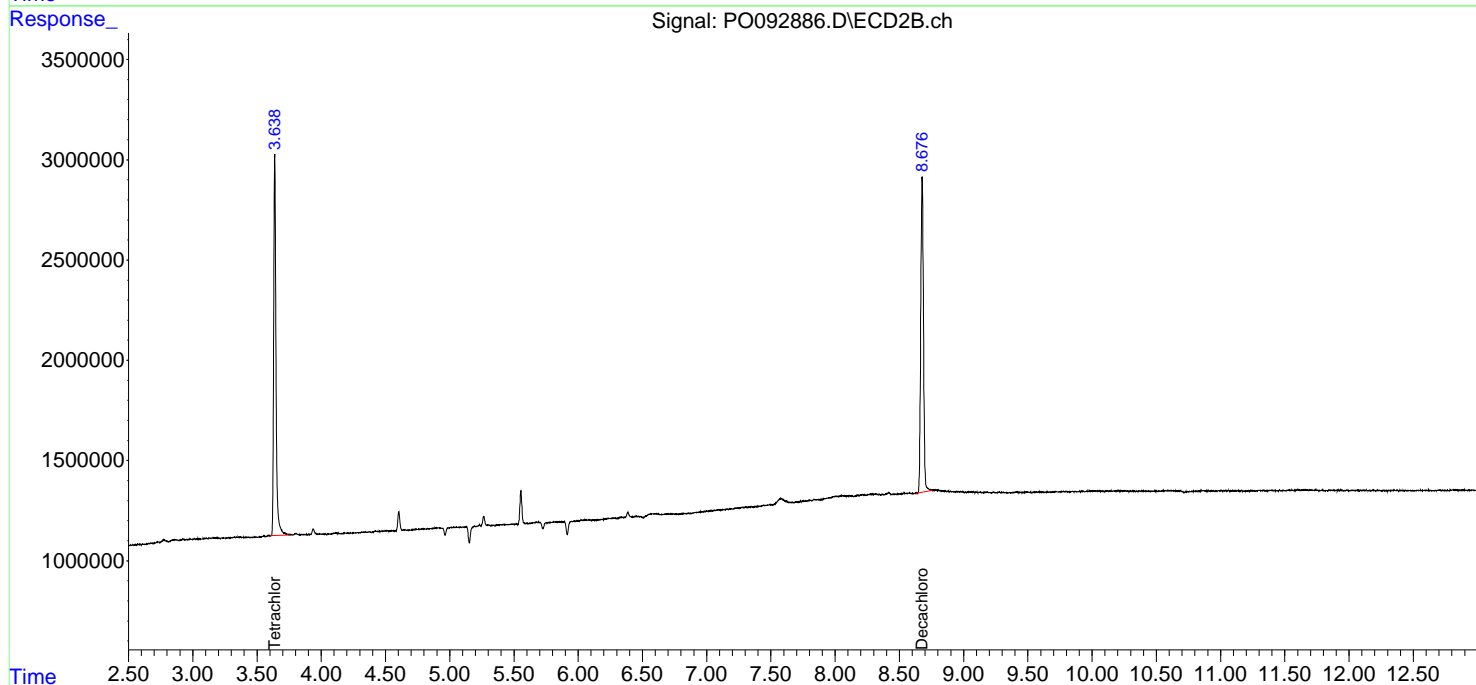
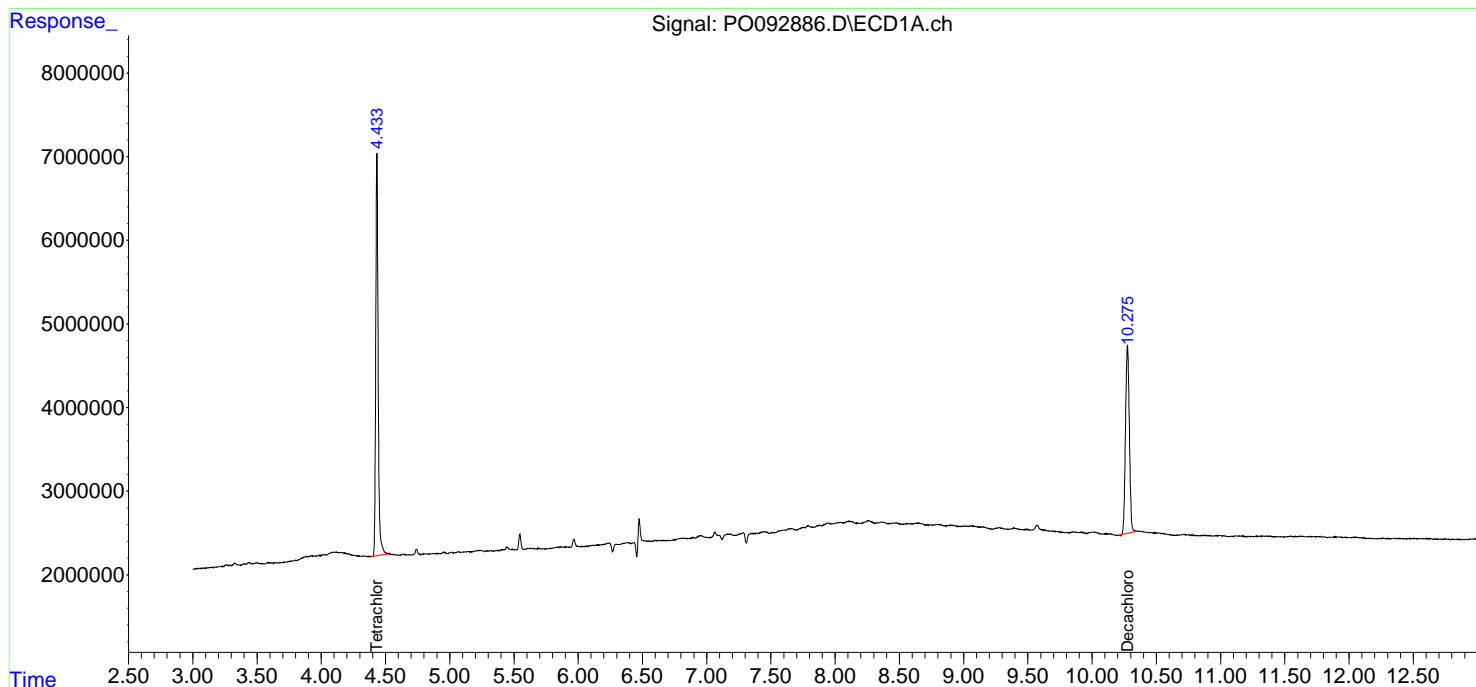
(f)=RT Delta > 1/2 Window (#)=Amounts differ by > 25% (m)=manual int.

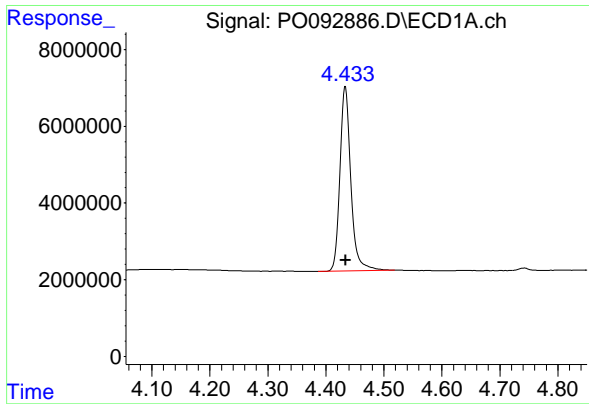
Data Path : Z:\pestpcbsrv\HPCHEM1\ECD_O\Data\PO030223\
Data File : PO092886.D
Signal(s) : Signal #1: ECD1A.ch Signal #2: ECD2B.ch
Acq On : 02 Mar 2023 10:33
Operator : YP/AJ
Sample : I.BLK
Misc :
ALS Vial : 2 Sample Multiplier: 1

Instrument :
ECD_O
ClientSampleId :
I.BLK

Integration File signal 1: autoint1.e
Integration File signal 2: autoint2.e
Quant Time: Mar 02 14:19:20 2023
Quant Method : Z:\pestpcbsrv\HPCHEM1\ECD_O\methods\PO022123.M
Quant Title : GC EXTRACTABLES
QLast Update : Wed Feb 22 05:46:11 2023
Response via : Initial Calibration
Integrator: ChemStation

Volume Inj. : 2 µl
Signal #1 Phase : ZB-MR1 Signal #2 Phase: ZB-MR2
Signal #1 Info : 30Mx0.32mmx 0.50µ Signal #2 Info : 30M x 0.32mm x 0.25µm

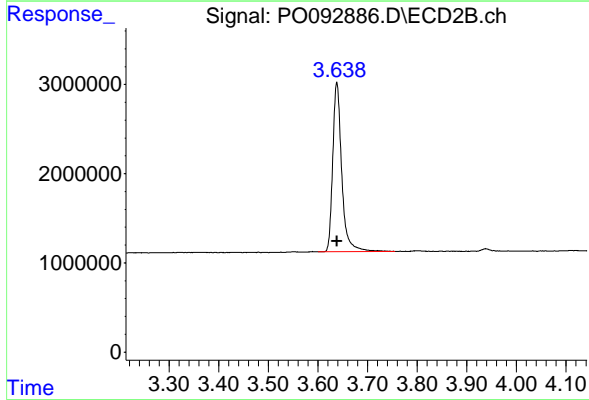




#1 Tetrachloro-m-xylene

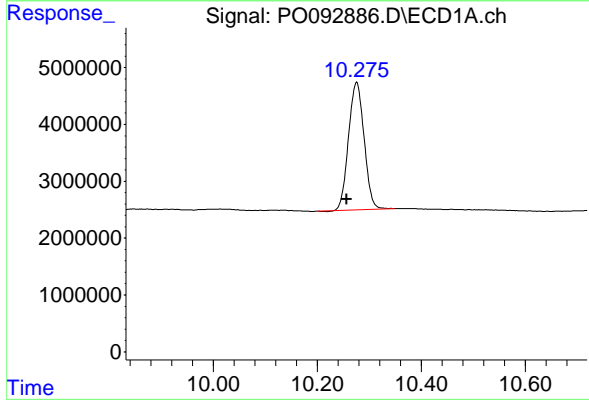
R.T.: 4.433 min
 Delta R.T.: 0.000 min
 Response: 63146081
 Conc: 21.03 ng/ml

Instrument :
 ECD_O
 ClientSampleId :
 I.BLK



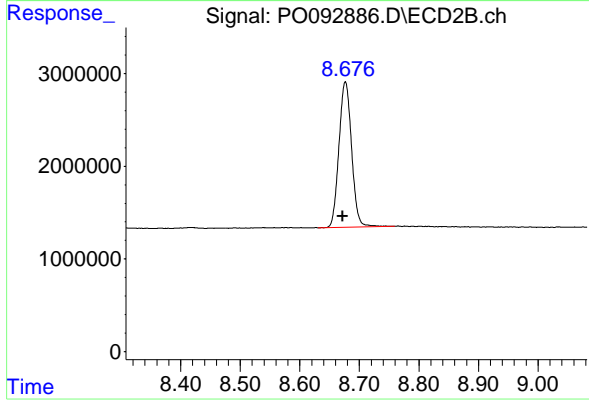
#1 Tetrachloro-m-xylene

R.T.: 3.638 min
 Delta R.T.: 0.000 min
 Response: 23940800
 Conc: 18.78 ng/ml



#2 Decachlorobiphenyl

R.T.: 10.276 min
 Delta R.T.: 0.019 min
 Response: 46737298
 Conc: 24.30 ng/ml



#2 Decachlorobiphenyl

R.T.: 8.677 min
 Delta R.T.: 0.004 min
 Response: 23165705
 Conc: 19.88 ng/ml