

Data Path : Z:\pestpcbsrv\HPCHEM1\ECD_0\Data\P0030323\
 Data File : P0092927.D
 Signal(s) : Signal #1: ECD1A.ch Signal #2: ECD2B.ch
 Acq On : 03 Mar 2023 11:00
 Operator : YP/AJ
 Sample : PB151157BL
 Misc :
 ALS Vial : 7 Sample Multiplier: 1

Instrument :
 ECD_0
 ClientSampleId :

Integration File signal 1: autoint1.e
 Integration File signal 2: autoint2.e
 Quant Time: Mar 03 16:47:35 2023
 Quant Method : Z:\pestpcbsrv\HPCHEM1\ECD_0\methods\P0022123.M
 Quant Title : GC EXTRACTABLES
 QLast Update : Wed Feb 22 05:46:11 2023
 Response via : Initial Calibration
 Integrator: ChemStation

Volume Inj. : 2 µl
 Signal #1 Phase : ZB-MR1 Signal #2 Phase: ZB-MR2
 Signal #1 Info : 30Mx0.32mmx 0.50µ Signal #2 Info : 30M x 0.32mm x 0.25µm

Compound	RT#1	RT#2	Resp#1	Resp#2	ng/ml	ng/ml

System Monitoring Compounds						
1) SA Tetrachlo...	4.443	3.638	56698571	20955182	18.882	16.440
2) SA Decachlor...	10.289	8.679	51321554	22786125	26.682	19.552 #
Target Compounds						
3) L1 AR-1016-1	5.557f	0.000	1177896	0	12.816	N.D. #
16) L4 AR-1242-1	5.557f	0.000	1177896	0	14.929	N.D. #
21) L5 AR-1248-1	5.557f	0.000	1177896	0	19.215	N.D. #

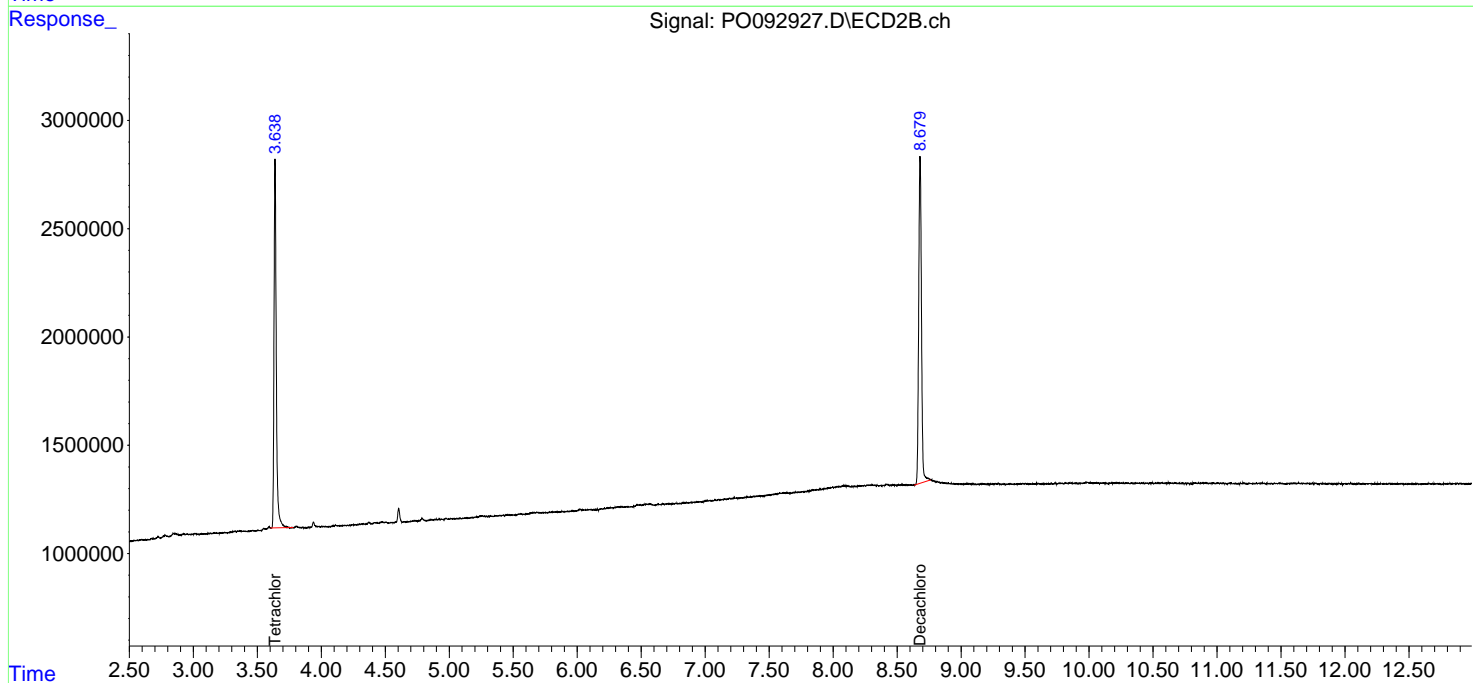
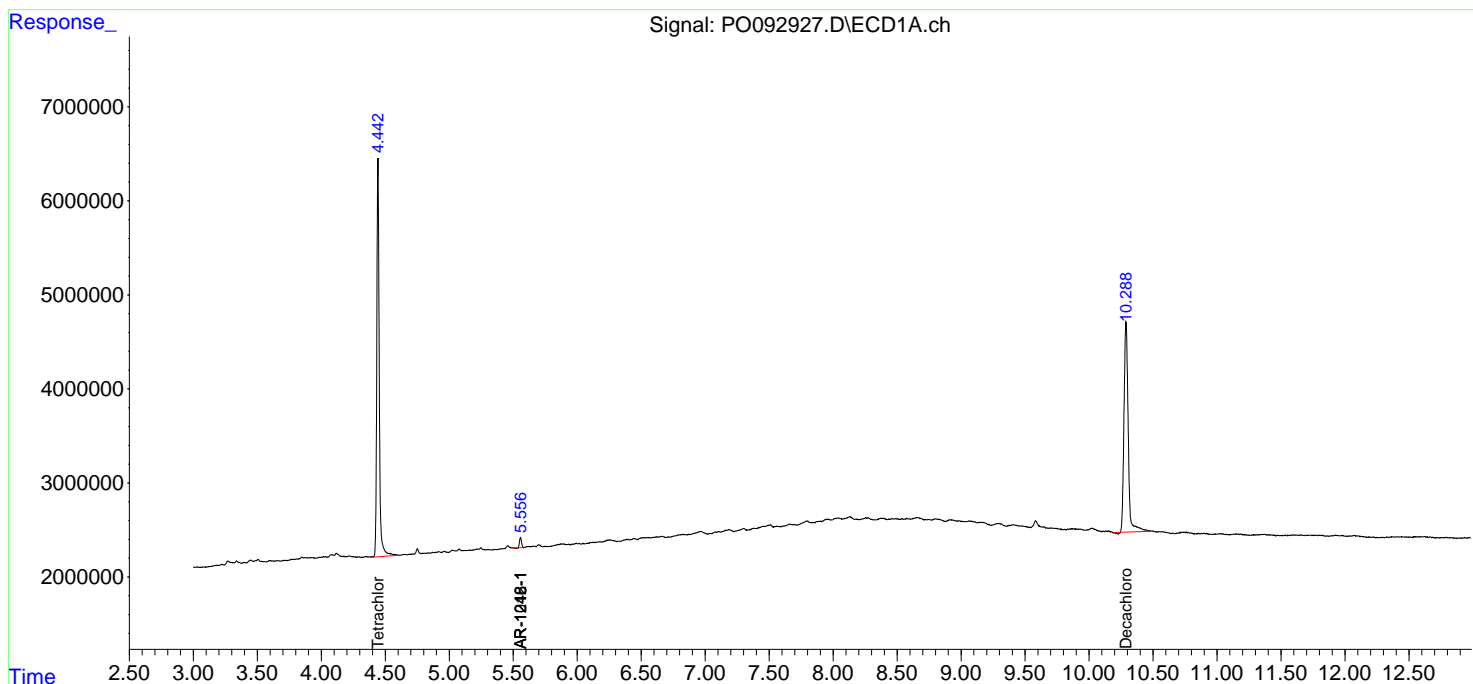
(f)=RT Delta > 1/2 Window (#)=Amounts differ by > 25% (m)=manual int.

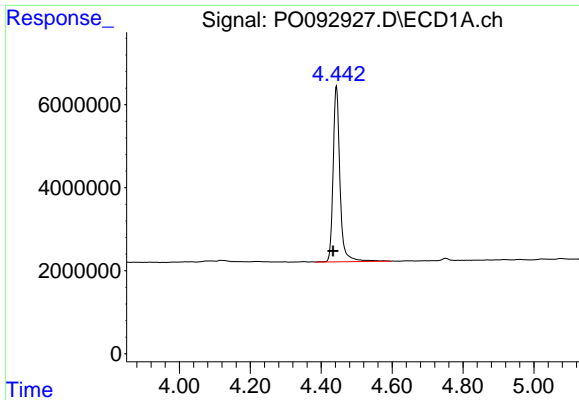
Data Path : Z:\pestpcbsrv\HPCHEM1\ECD_O\Data\P0030323\
Data File : P0092927.D
Signal(s) : Signal #1: ECD1A.ch Signal #2: ECD2B.ch
Acq On : 03 Mar 2023 11:00
Operator : YP/AJ
Sample : PB151157BL
Misc :
ALS Vial : 7 Sample Multiplier: 1

Instrument :
ECD_O
ClientSampleId :

Integration File signal 1: autoint1.e
Integration File signal 2: autoint2.e
Quant Time: Mar 03 16:47:35 2023
Quant Method : Z:\pestpcbsrv\HPCHEM1\ECD_O\methods\P0022123.M
Quant Title : GC EXTRACTABLES
QLast Update : Wed Feb 22 05:46:11 2023
Response via : Initial Calibration
Integrator: ChemStation

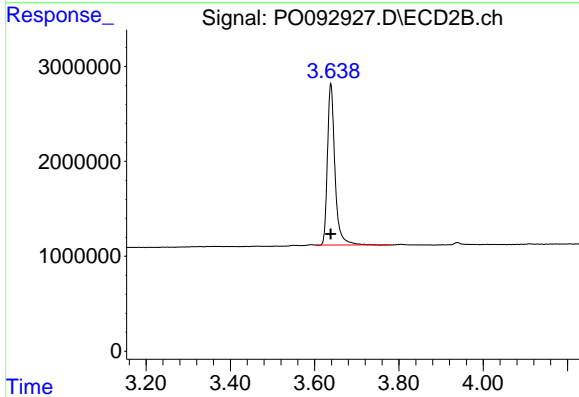
Volume Inj. : 2 µl
Signal #1 Phase : ZB-MR1 Signal #2 Phase: ZB-MR2
Signal #1 Info : 30Mx0.32mmx 0.50µ Signal #2 Info : 30M x 0.32mm x 0.25µm



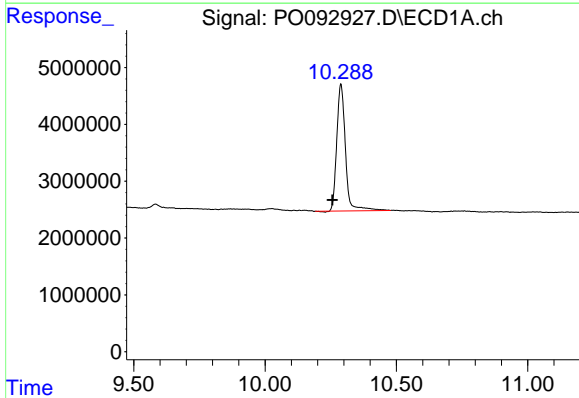


#1 Tetrachloro-m-xylene
 R.T.: 4.443 min
 Delta R.T.: 0.009 min
 Response: 56698571
 Conc: 18.88 ng/ml

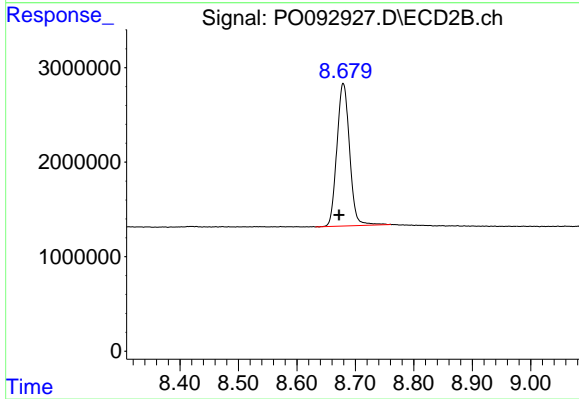
Instrument :
 ECD_O
 ClientSampleId :



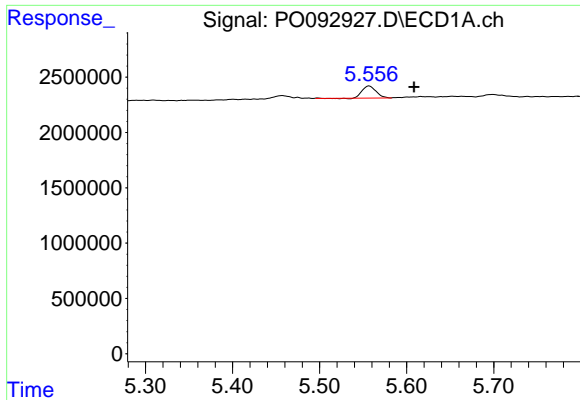
#1 Tetrachloro-m-xylene
 R.T.: 3.638 min
 Delta R.T.: 0.000 min
 Response: 20955182
 Conc: 16.44 ng/ml



#2 Decachlorobiphenyl
 R.T.: 10.289 min
 Delta R.T.: 0.032 min
 Response: 51321554
 Conc: 26.68 ng/ml



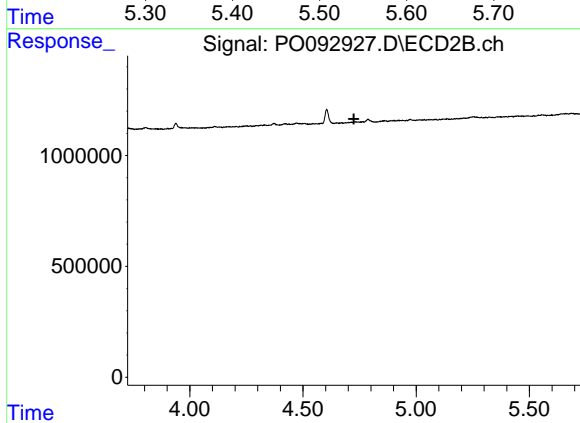
#2 Decachlorobiphenyl
 R.T.: 8.679 min
 Delta R.T.: 0.007 min
 Response: 22786125
 Conc: 19.55 ng/ml



#3 AR-1016-1

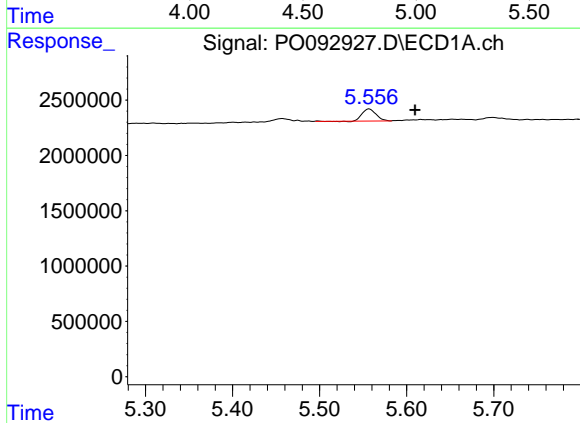
R.T.: 5.557 min
 Delta R.T.: -0.052 min
 Response: 1177896
 Conc: 12.82 ng/ml

Instrument :
 ECD_O
 ClientSampleId :



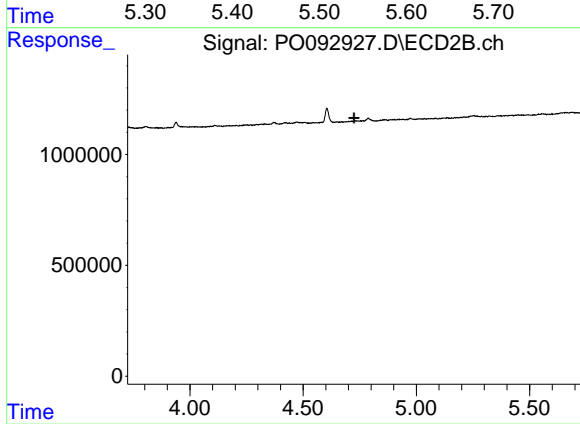
#3 AR-1016-1

R.T.: 0.000 min
 Exp R.T. : 4.725 min
 Response: 0
 Conc: N.D.



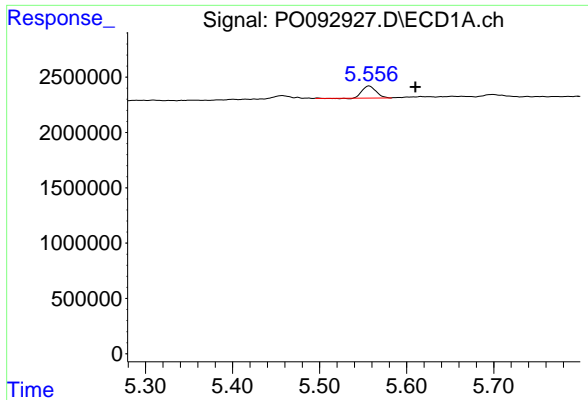
#16 AR-1242-1

R.T.: 5.557 min
 Delta R.T.: -0.053 min
 Response: 1177896
 Conc: 14.93 ng/ml



#16 AR-1242-1

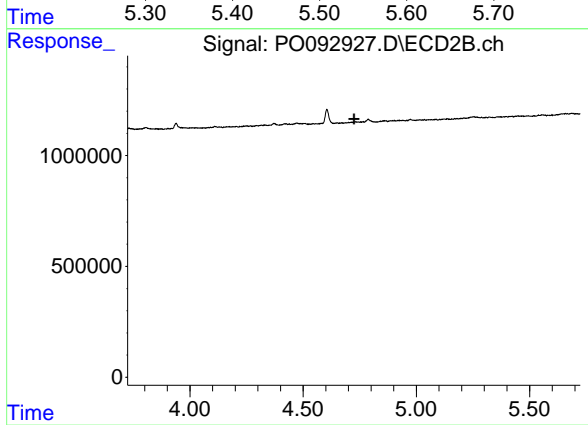
R.T.: 0.000 min
 Exp R.T. : 4.724 min
 Response: 0
 Conc: N.D.



#21 AR-1248-1

R.T.: 5.557 min
Delta R.T.: -0.053 min
Response: 1177896
Conc: 19.22 ng/ml

Instrument :
ECD_O
ClientSampleId :



#21 AR-1248-1

R.T.: 0.000 min
Exp R.T. : 4.724 min
Response: 0
Conc: N.D.