

Data Path : Z:\pestpcbsrv\HPCHEM1\ECD_0\Data\P0030421\
 Data File : P0075861.D
 Signal(s) : Signal #1: ECD1A.CH Signal #2: ECD2B.CH
 Acq On : 04 Mar 2021 20:35
 Operator : AJ/MA
 Sample : AR1248ICC750
 Misc :
 ALS Vial : 16 Sample Multiplier: 1

Instrument :
 ECD_0
 ClientSampleId :
 AR1248ICC750

Integration File signal 1: autoint1.e
 Integration File signal 2: autoint2.e
 Quant Time: Mar 05 07:08:20 2021
 Quant Method : Z:\pestpcbsrv\HPCHEM1\ECD_0\methods\P0030421.M
 Quant Title : GC EXTRACTABLES
 QLast Update : Fri Mar 05 07:07:25 2021
 Response via : Initial Calibration
 Integrator: ChemStation 6890 Scale Mode: Small noise peaks clipped

Volume Inj. : 2 µl
 Signal #1 Phase : ZB-MR1 Signal #2 Phase: ZB-MR2
 Signal #1 Info : 30Mx0.32mmx 0.50µ Signal #2 Info : 30M x 0.32mm x 0.25µm

	Compound	RT#1	RT#2	Resp#1	Resp#2	ng/ml	ng/ml

System Monitoring Compounds							
1)	SA Tetrachlo...	4.929	3.945	4683475	3378048	75.729	74.661
2)	SA Decachlor...	10.943	9.226	2482957	2672910	74.399	72.791
Target Compounds							
21)	L5 AR-1248-1	6.254	5.196	799187	663103	740.991	719.017
22)	L5 AR-1248-2	6.549	5.458	1146495	1004053	735.503	720.362
23)	L5 AR-1248-3	6.767	5.503	1339766	1022955	740.923	718.492
24)	L5 AR-1248-4	7.198	5.686	1410623	1194450	742.542	719.348
25)	L5 AR-1248-5	7.237	6.108	1436069	1189434	747.986	729.708

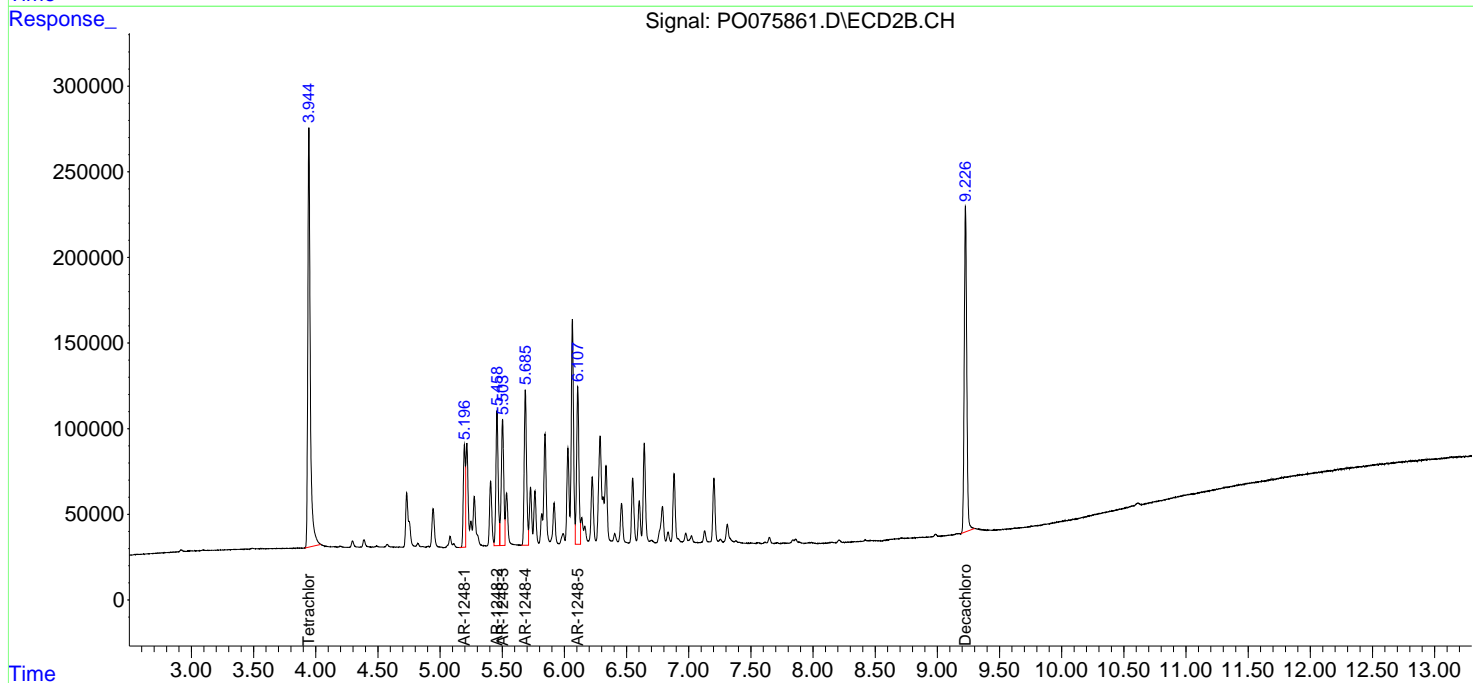
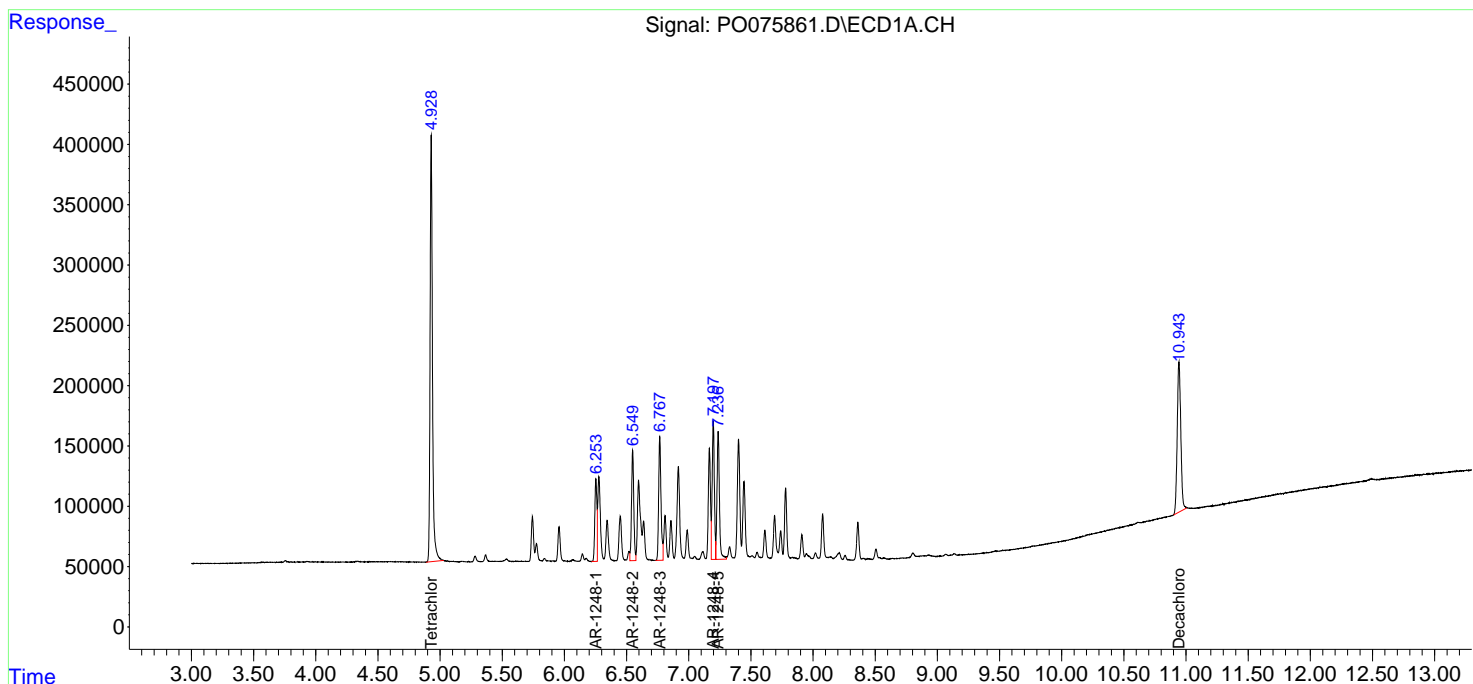
(f)=RT Delta > 1/2 Window (#)=Amounts differ by > 25% (m)=manual int.

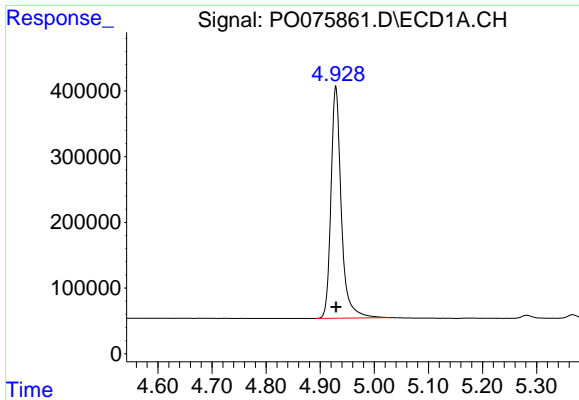
Data Path : Z:\pestpcbsrv\HPCHEM1\ECD_0\Data\P0030421\
 Data File : P0075861.D
 Signal(s) : Signal #1: ECD1A.CH Signal #2: ECD2B.CH
 Acq On : 04 Mar 2021 20:35
 Operator : AJ/MA
 Sample : AR1248ICC750
 Misc :
 ALS Vial : 16 Sample Multiplier: 1

Instrument :
 ECD_O
 ClientSampleId :
 AR1248ICC750

Integration File signal 1: autoint1.e
 Integration File signal 2: autoint2.e
 Quant Time: Mar 05 07:08:20 2021
 Quant Method : Z:\pestpcbsrv\HPCHEM1\ECD_0\methods\P0030421.M
 Quant Title : GC EXTRACTABLES
 QLast Update : Fri Mar 05 07:07:25 2021
 Response via : Initial Calibration
 Integrator: ChemStation 6890 Scale Mode: Small noise peaks clipped

Volume Inj. : 2 µl
 Signal #1 Phase : ZB-MR1 Signal #2 Phase: ZB-MR2
 Signal #1 Info : 30Mx0.32mmx 0.50µ Signal #2 Info : 30M x 0.32mm x 0.25µm

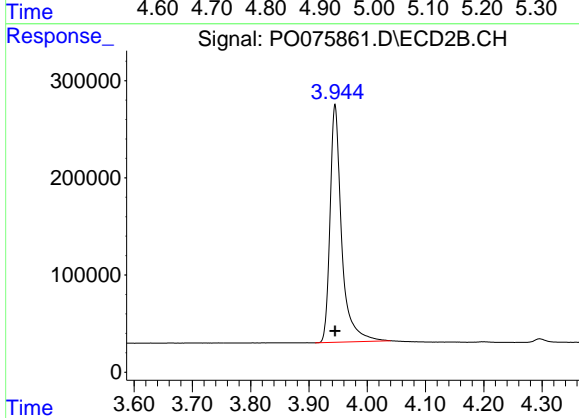




#1 Tetrachloro-m-xylene

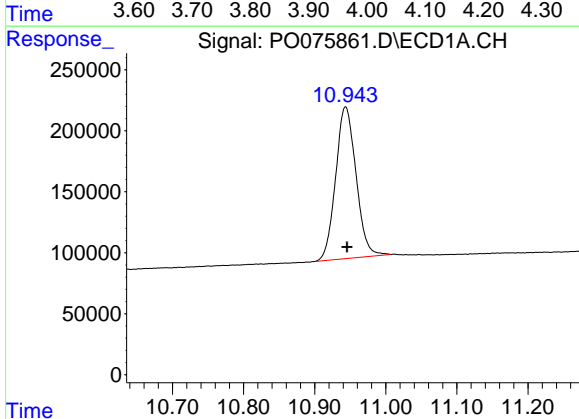
R.T.: 4.929 min
 Delta R.T.: 0.000 min
 Response: 4683475
 Conc: 75.73 ng/ml

Instrument :
 ECD_O
 ClientSampleId :
 AR1248ICC750



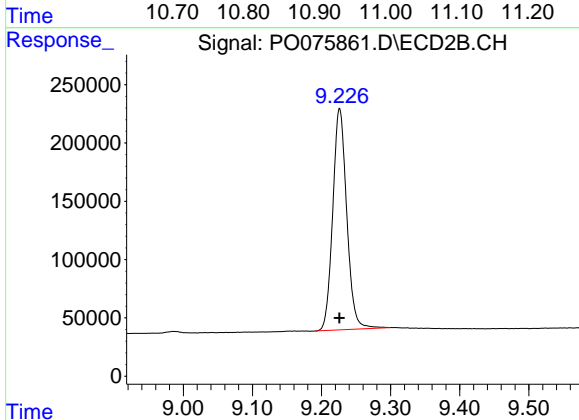
#1 Tetrachloro-m-xylene

R.T.: 3.945 min
 Delta R.T.: 0.000 min
 Response: 3378048
 Conc: 74.66 ng/ml



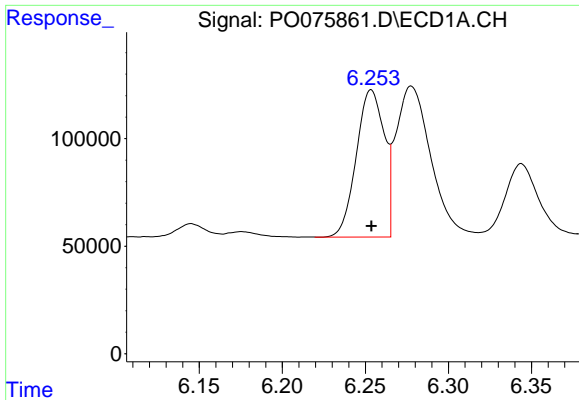
#2 Decachlorobiphenyl

R.T.: 10.943 min
 Delta R.T.: -0.002 min
 Response: 2482957
 Conc: 74.40 ng/ml



#2 Decachlorobiphenyl

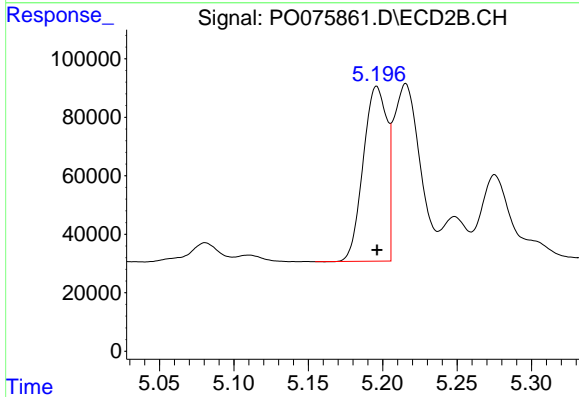
R.T.: 9.226 min
 Delta R.T.: 0.000 min
 Response: 2672910
 Conc: 72.79 ng/ml



#21 AR-1248-1

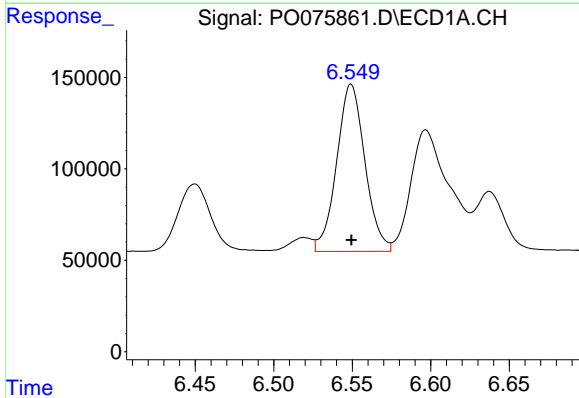
R.T.: 6.254 min
 Delta R.T.: 0.000 min
 Response: 799187
 Conc: 740.99 ng/ml

Instrument :
 ECD_O
 ClientSampleId :
 AR1248ICC750



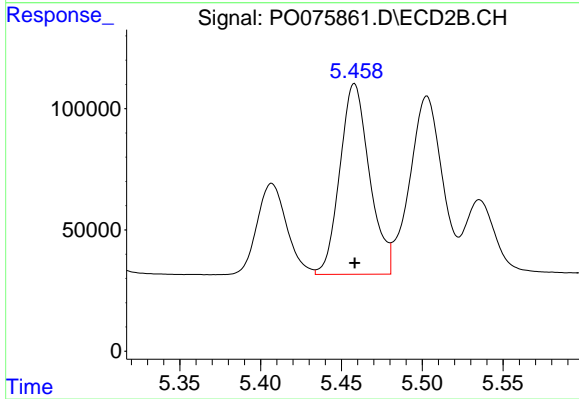
#21 AR-1248-1

R.T.: 5.196 min
 Delta R.T.: 0.000 min
 Response: 663103
 Conc: 719.02 ng/ml



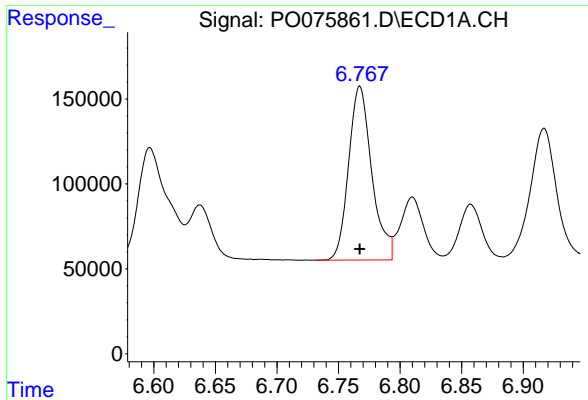
#22 AR-1248-2

R.T.: 6.549 min
 Delta R.T.: 0.000 min
 Response: 1146495
 Conc: 735.50 ng/ml



#22 AR-1248-2

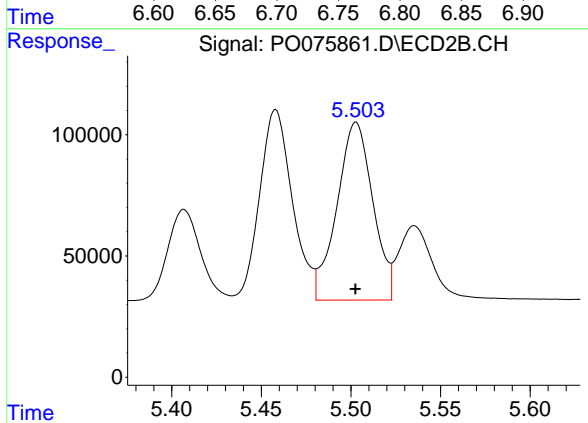
R.T.: 5.458 min
 Delta R.T.: 0.000 min
 Response: 1004053
 Conc: 720.36 ng/ml



#23 AR-1248-3

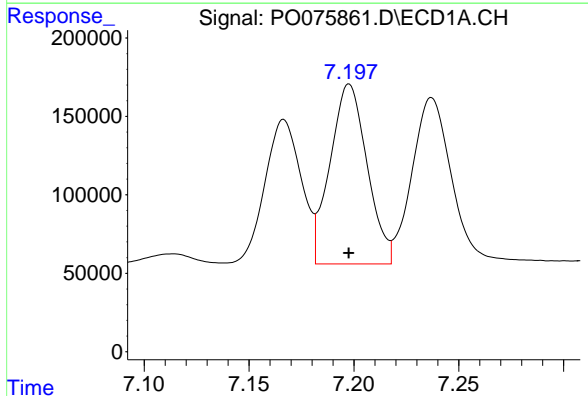
R.T.: 6.767 min
 Delta R.T.: 0.000 min
 Response: 1339766
 Conc: 740.92 ng/ml

Instrument :
 ECD_O
ClientSampled :
 AR1248ICC750



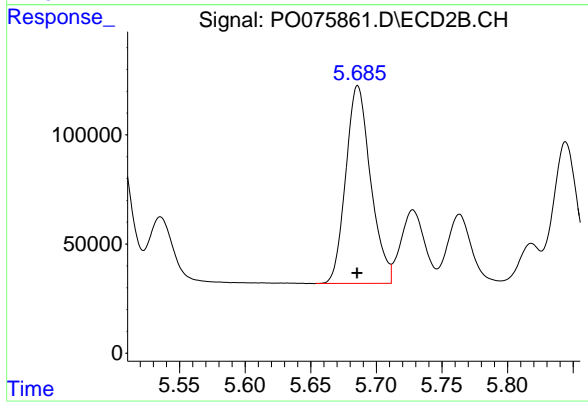
#23 AR-1248-3

R.T.: 5.503 min
 Delta R.T.: 0.000 min
 Response: 1022955
 Conc: 718.49 ng/ml



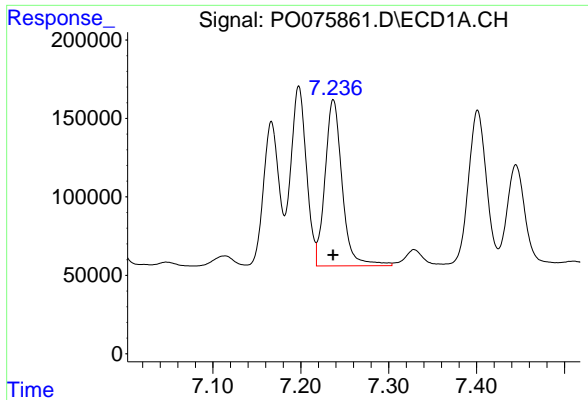
#24 AR-1248-4

R.T.: 7.198 min
 Delta R.T.: 0.000 min
 Response: 1410623
 Conc: 742.54 ng/ml



#24 AR-1248-4

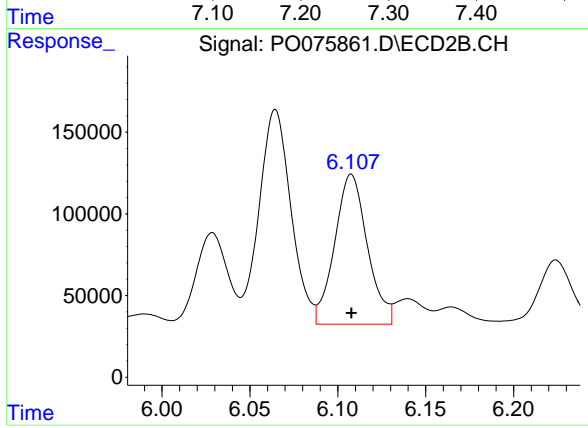
R.T.: 5.686 min
 Delta R.T.: 0.000 min
 Response: 1194450
 Conc: 719.35 ng/ml



#25 AR-1248-5

R.T.: 7.237 min
 Delta R.T.: 0.000 min
 Response: 1436069
 Conc: 747.99 ng/ml

Instrument :
 ECD_O
ClientSampled :
 AR1248ICC750



#25 AR-1248-5

R.T.: 6.108 min
 Delta R.T.: 0.000 min
 Response: 1189434
 Conc: 729.71 ng/ml