

Data Path : Z:\pestpcbsrv\HPCHEM1\ECD_0\Data\P0030521\
 Data File : P0075903.D
 Signal(s) : Signal #1: ECD1A.CH Signal #2: ECD2B.CH
 Acq On : 05 Mar 2021 13:49
 Operator : DD\AJ
 Sample : AR1242CCC500
 Misc :
 ALS Vial : 4 Sample Multiplier: 1

Instrument :
 ECD_0
 ClientSampleId :
 AR1242CCC500

Integration File signal 1: autoint1.e
 Integration File signal 2: autoint2.e
 Quant Time: Mar 05 16:20:20 2021
 Quant Method : Z:\pestpcbsrv\HPCHEM1\ECD_0\methods\P0030421.M
 Quant Title : GC EXTRACTABLES
 QLast Update : Fri Mar 05 08:07:39 2021
 Response via : Initial Calibration
 Integrator: ChemStation 6890 Scale Mode: Small noise peaks clipped

Volume Inj. : 2 µl
 Signal #1 Phase : ZB-MR1 Signal #2 Phase: ZB-MR2
 Signal #1 Info : 30Mx0.32mmx 0.50µ Signal #2 Info : 30M x 0.32mm x 0.25µm

Compound	RT#1	RT#2	Resp#1	Resp#2	ng/ml	ng/ml

System Monitoring Compounds						
1) SA Tetrachlo...	4.927	3.943	3292788	2472520	55.242	55.428
2) SA Decachlor...	10.939	9.223	1884470	1865977	57.363	51.318
Target Compounds						
16) L4 AR-1242-1	6.252	5.193	776098	626775	533.135	526.975
17) L4 AR-1242-2	6.276	5.213	1135063	978563	508.839	503.800
18) L4 AR-1242-3	6.342	5.404	705757	510000	516.921	521.010
19) L4 AR-1242-4	6.450	5.500	562223	511788	527.526	521.650
20) L4 AR-1242-5	7.236	6.062	589787	611228	550.305	516.861

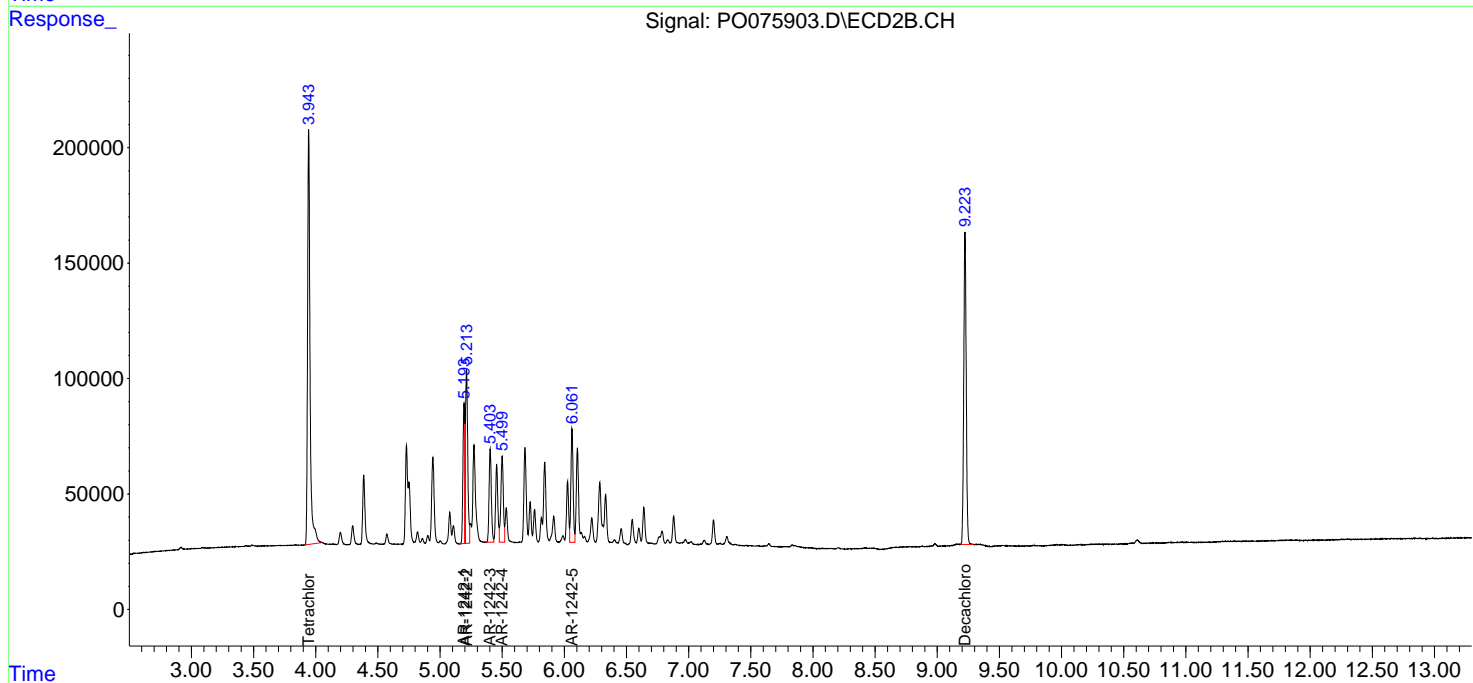
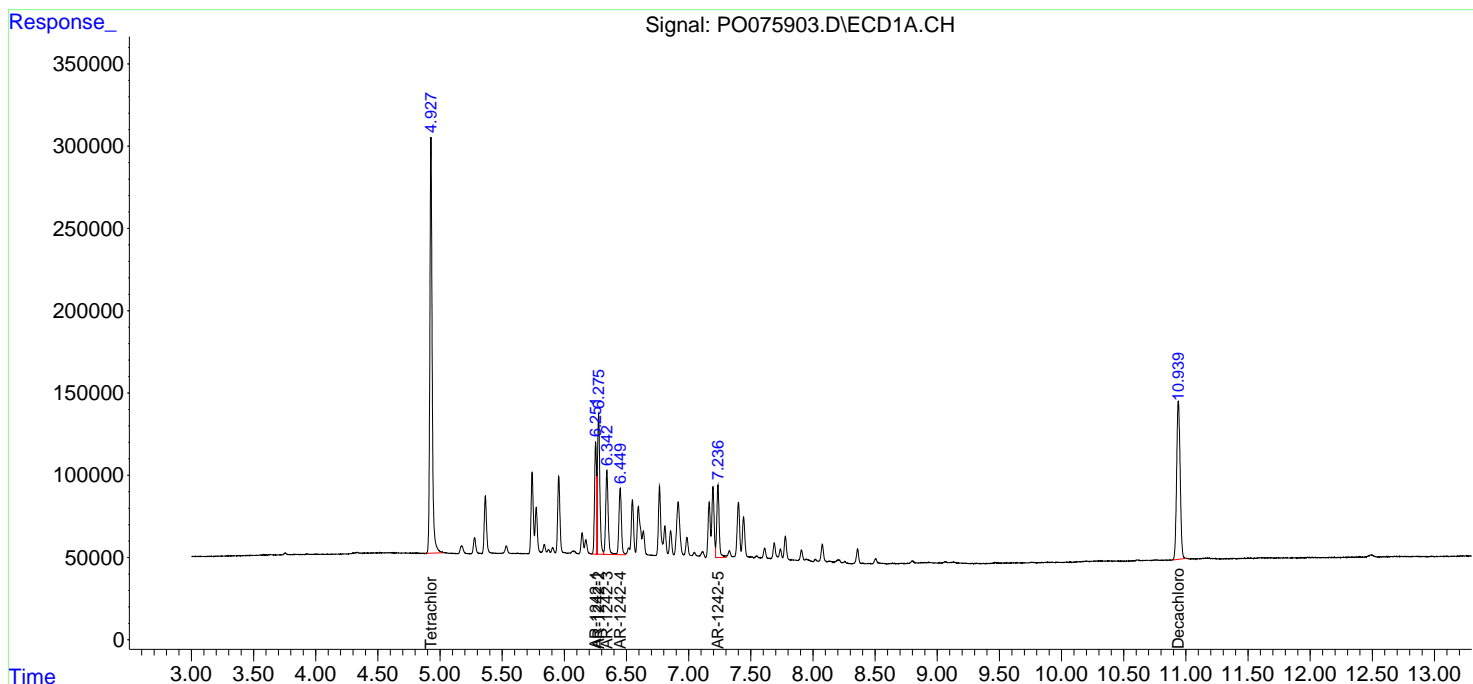
(f)=RT Delta > 1/2 Window (#)=Amounts differ by > 25% (m)=manual int.

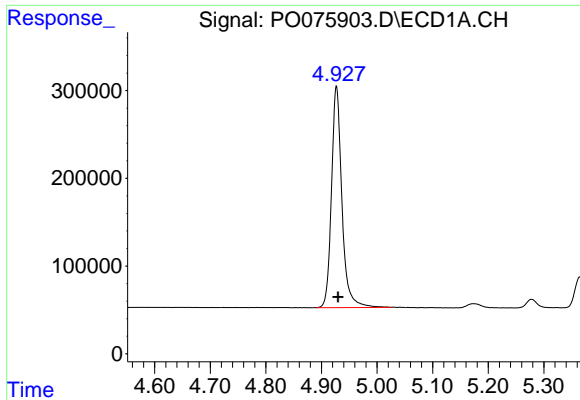
Data Path : Z:\pestpcbsrv\HPCHEM1\ECD_0\Data\P0030521\
 Data File : P0075903.D
 Signal(s) : Signal #1: ECD1A.CH Signal #2: ECD2B.CH
 Acq On : 05 Mar 2021 13:49
 Operator : DD\AJ
 Sample : AR1242CCC500
 Misc :
 ALS Vial : 4 Sample Multiplier: 1

Instrument :
 ECD_O
 ClientSampled :
 AR1242CCC500

Integration File signal 1: autoint1.e
 Integration File signal 2: autoint2.e
 Quant Time: Mar 05 16:20:20 2021
 Quant Method : Z:\pestpcbsrv\HPCHEM1\ECD_0\methods\P0030421.M
 Quant Title : GC EXTRACTABLES
 QLast Update : Fri Mar 05 08:07:39 2021
 Response via : Initial Calibration
 Integrator: ChemStation 6890 Scale Mode: Small noise peaks clipped

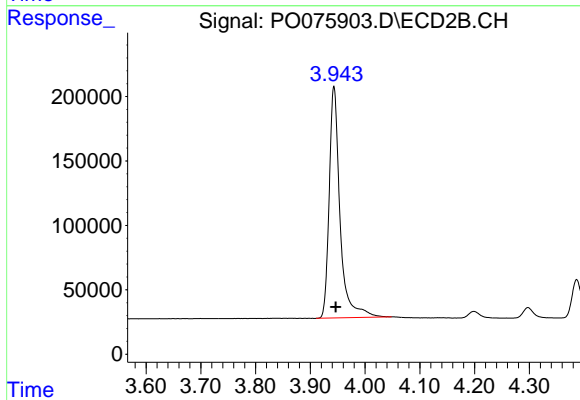
Volume Inj. : 2 µl
 Signal #1 Phase : ZB-MR1 Signal #2 Phase: ZB-MR2
 Signal #1 Info : 30Mx0.32mmx 0.50µ Signal #2 Info : 30M x 0.32mm x 0.25µm



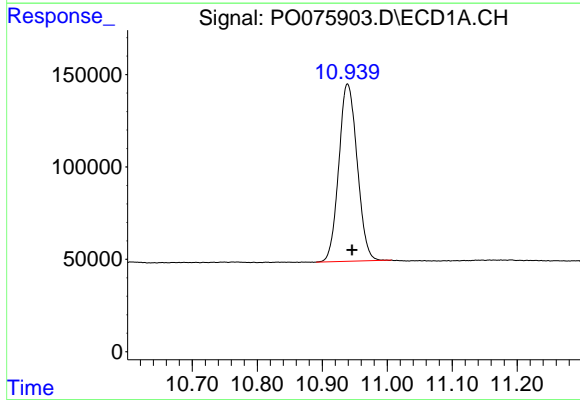


#1 Tetrachloro-m-xylene
 R.T.: 4.927 min
 Delta R.T.: -0.003 min
 Response: 3292788
 Conc: 55.24 ng/ml

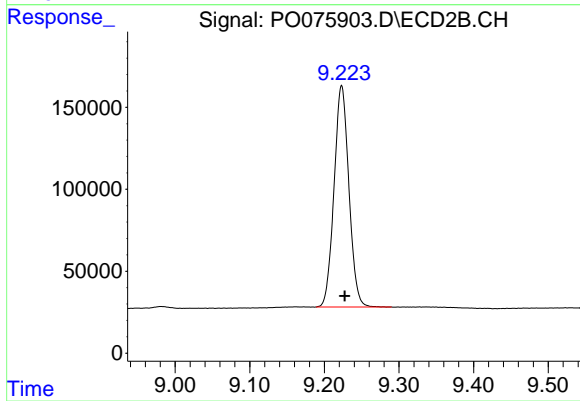
Instrument :
 ECD_O
 ClientSampleId :
 AR1242CCC500



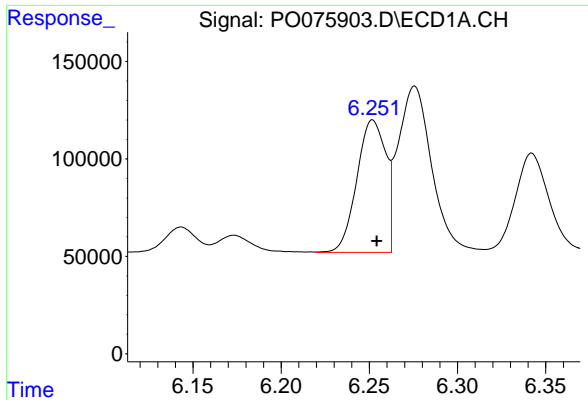
#1 Tetrachloro-m-xylene
 R.T.: 3.943 min
 Delta R.T.: -0.003 min
 Response: 2472520
 Conc: 55.43 ng/ml



#2 Decachlorobiphenyl
 R.T.: 10.939 min
 Delta R.T.: -0.007 min
 Response: 1884470
 Conc: 57.36 ng/ml

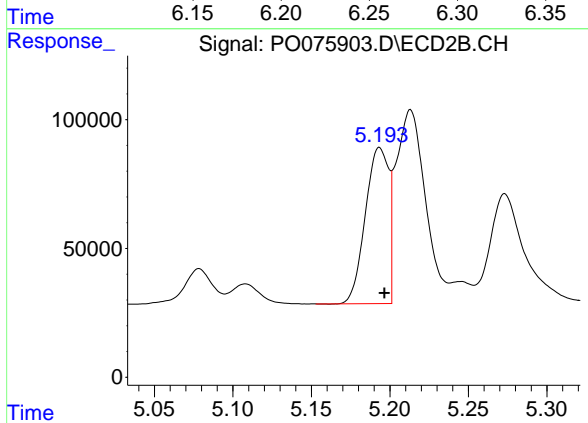


#2 Decachlorobiphenyl
 R.T.: 9.223 min
 Delta R.T.: -0.004 min
 Response: 1865977
 Conc: 51.32 ng/ml

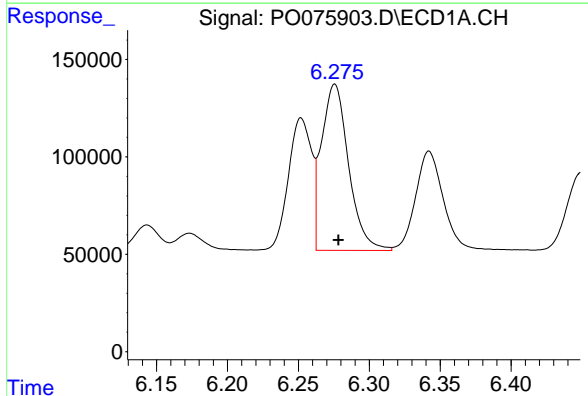


#16 AR-1242-1
 R.T.: 6.252 min
 Delta R.T.: -0.002 min
 Response: 776098
 Conc: 533.14 ng/ml

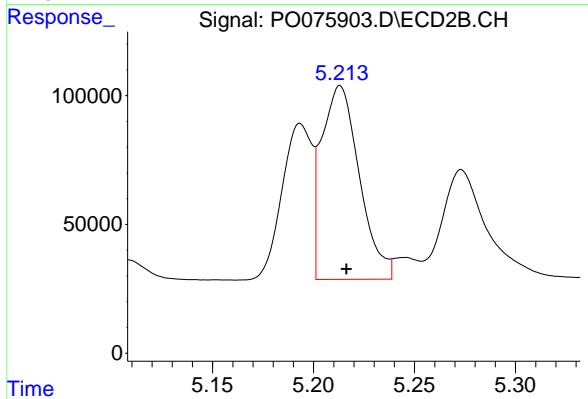
Instrument :
 ECD_O
 ClientSampleId :
 AR1242CCC500



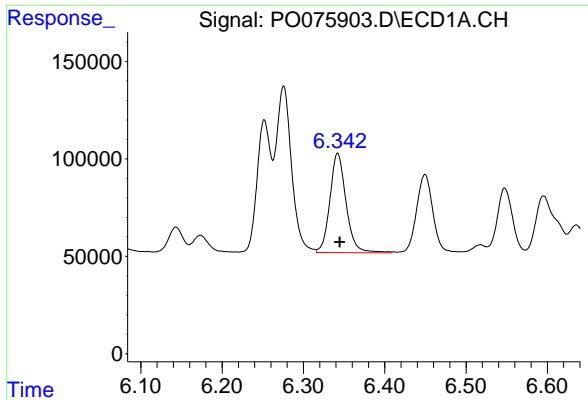
#16 AR-1242-1
 R.T.: 5.193 min
 Delta R.T.: -0.003 min
 Response: 626775
 Conc: 526.97 ng/ml



#17 AR-1242-2
 R.T.: 6.276 min
 Delta R.T.: -0.002 min
 Response: 1135063
 Conc: 508.84 ng/ml



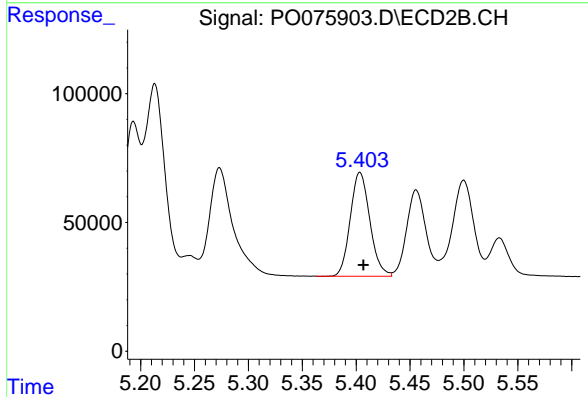
#17 AR-1242-2
 R.T.: 5.213 min
 Delta R.T.: -0.003 min
 Response: 978563
 Conc: 503.80 ng/ml



#18 AR-1242-3

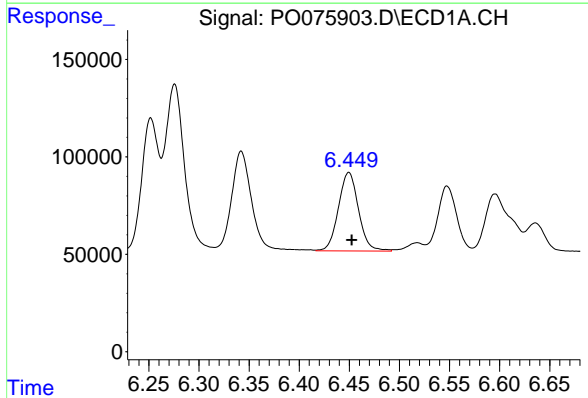
R.T.: 6.342 min
Delta R.T.: -0.003 min
Response: 705757
Conc: 516.92 ng/ml

Instrument :
ECD_O
ClientSampleId :
AR1242CCC500



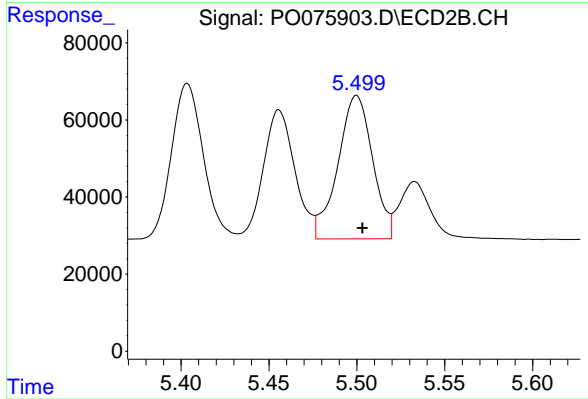
#18 AR-1242-3

R.T.: 5.404 min
Delta R.T.: -0.003 min
Response: 510000
Conc: 521.01 ng/ml



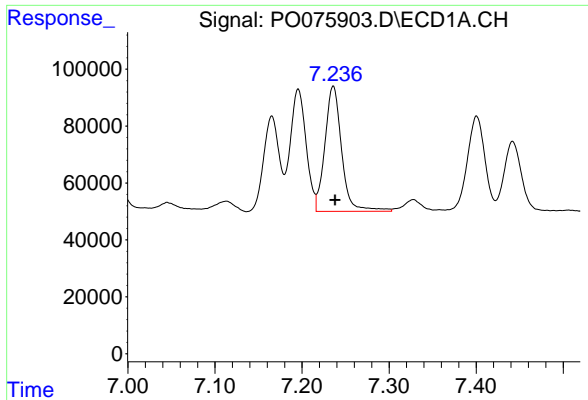
#19 AR-1242-4

R.T.: 6.450 min
Delta R.T.: -0.003 min
Response: 562223
Conc: 527.53 ng/ml



#19 AR-1242-4

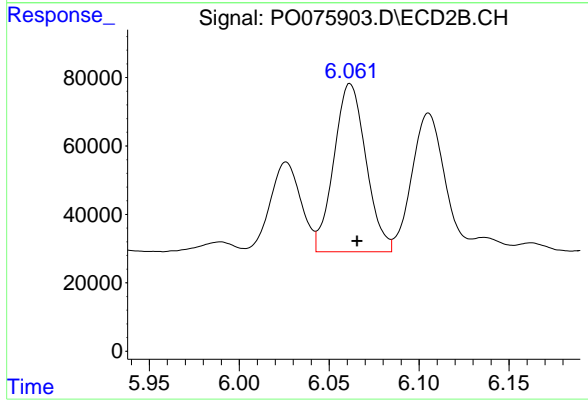
R.T.: 5.500 min
Delta R.T.: -0.003 min
Response: 511788
Conc: 521.65 ng/ml



#20 AR-1242-5

R.T.: 7.236 min
Delta R.T.: -0.002 min
Response: 589787
Conc: 550.30 ng/ml

Instrument :
ECD_O
ClientSampled :
AR1242CCC500



#20 AR-1242-5

R.T.: 6.062 min
Delta R.T.: -0.004 min
Response: 611228
Conc: 516.86 ng/ml