

Data Path : Z:\pestpcbsrv\HPCHEM1\ECD\_0\Data\P0030619\  
 Data File : P0054249.D  
 Signal(s) : Signal #1: ECD1A.CH Signal #2: ECD2B.CH  
 Acq On : 06 Mar 2019 9:11  
 Operator : SM/SJ  
 Sample : AR1660CCC500  
 Misc :  
 ALS Vial : 3 Sample Multiplier: 1

**Instrument :**  
 ECD\_0  
**ClientSampleId :**  
 AR1660CCC500

**Manual Integrations**  
**APPROVED**  
 Sohil  
 3/7/2019 1:44:09 PM

Integration File signal 1: autoint1.e  
 Integration File signal 2: autoint2.e  
 Quant Time: Mar 06 09:52:25 2019  
 Quant Method : Z:\pestpcbsrv\HPCHEM1\ECD\_0\methods\P0030419.M  
 Quant Title : GC EXTRACTABLES  
 QLast Update : Tue Mar 05 06:51:55 2019  
 Response via : Initial Calibration  
 Integrator: ChemStation 6890 Scale Mode: Small noise peaks clipped

Volume Inj. : 2 µl  
 Signal #1 Phase : ZB-MR1 Signal #2 Phase: ZB-MR2  
 Signal #1 Info : 30Mx0.32mmx 0.50µ Signal #2 Info : 30M x 0.32mm x 0.25µm

Compound	RT#1	RT#2	Resp#1	Resp#2	ng/ml	ng/ml
-----						
System Monitoring Compounds						
1) SA Tetrachlo...	4.032	3.117	258.2E6	17890388	46.435	56.942
2) SA Decachlor...	9.351	7.685	76600934	16408759	51.592	51.302
Target Compounds						
3) L1 AR-1016-1	5.163	4.083	50957218	6777015	441.659	556.318 #
4) L1 AR-1016-2	5.183	4.096	77599663	10806735	450.733	565.849 #
5) L1 AR-1016-3	5.242	4.252	44121176	5661968	435.020	547.220 #
6) L1 AR-1016-4	5.341	4.294	35212703	4428536	428.421	559.453 #
7) L1 AR-1016-5	5.621	4.482	32068107	5601673	458.326	535.352m
31) L7 AR-1260-1	6.711	5.426	45648371	10538716	465.262	519.859
32) L7 AR-1260-2	6.963	5.609	53978144	12505379	458.568	512.555
33) L7 AR-1260-3	7.311	5.744	33667828	11743694	464.937	519.234
34) L7 AR-1260-4	7.536	6.186	35914491	7539204	484.941	528.302
35) L7 AR-1260-5	7.841	6.430	76013039	18168201	494.622	522.540
-----						

(f)=RT Delta > 1/2 Window (#)=Amounts differ by > 25% (m)=manual int.

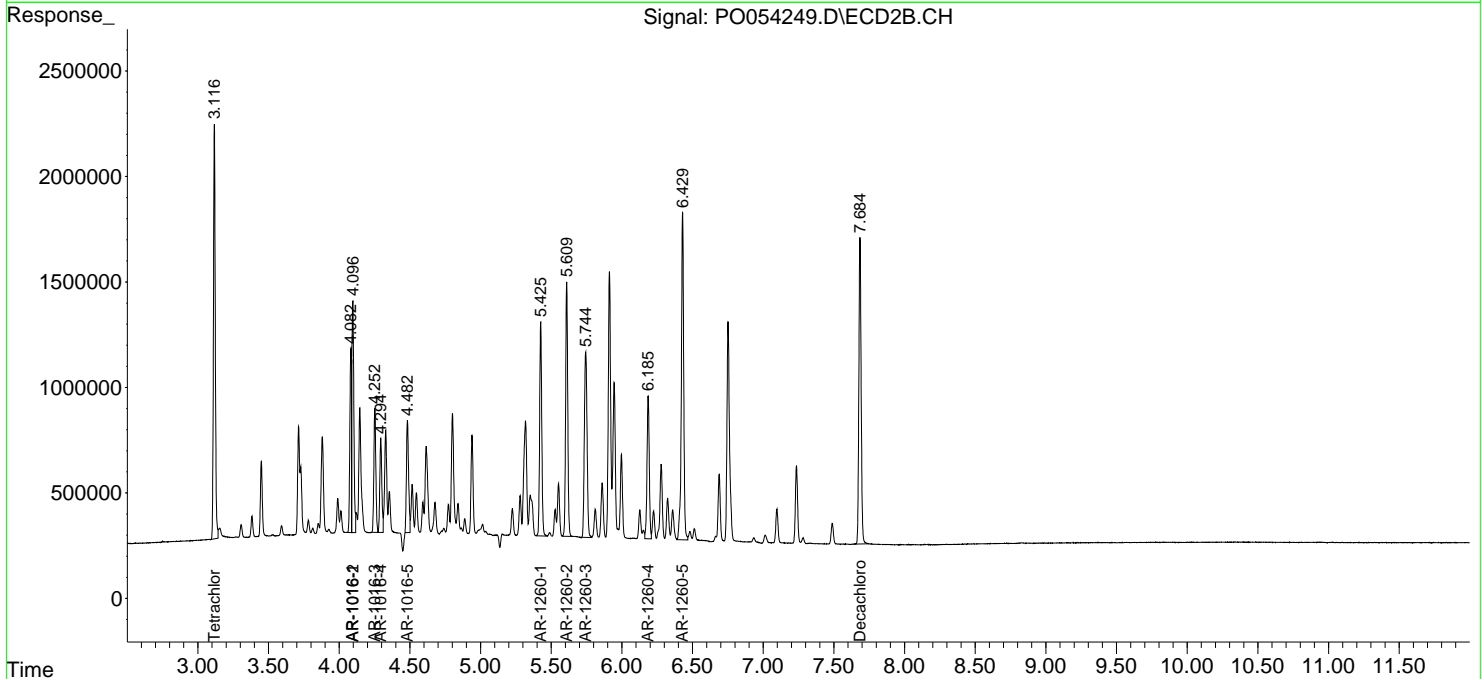
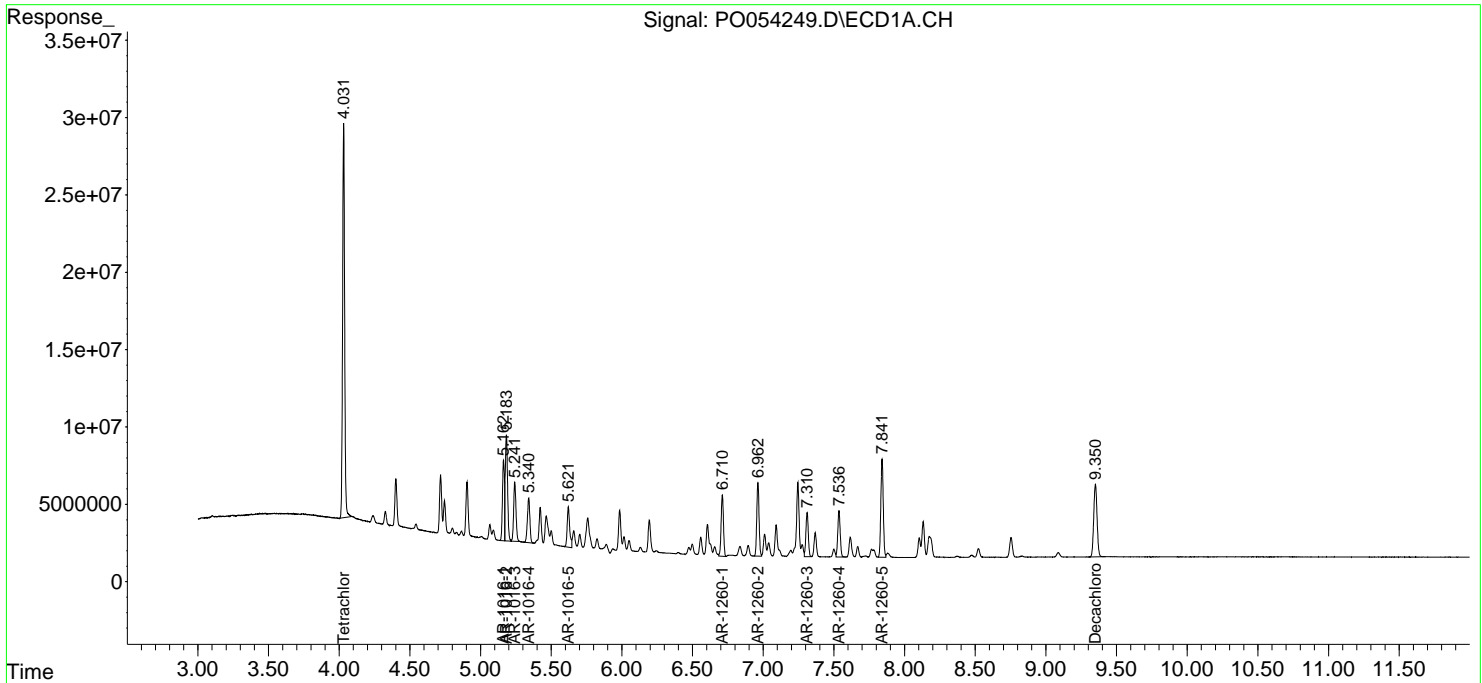
Data Path : Z:\pestpcbsrv\HPCHEM1\ECD\_O\Data\P0030619\  
 Data File : P0054249.D  
 Signal(s) : Signal #1: ECD1A.CH Signal #2: ECD2B.CH  
 Acq On : 06 Mar 2019 9:11  
 Operator : SM/SJ  
 Sample : AR1660CCC500  
 Misc :  
 ALS Vial : 3 Sample Multiplier: 1

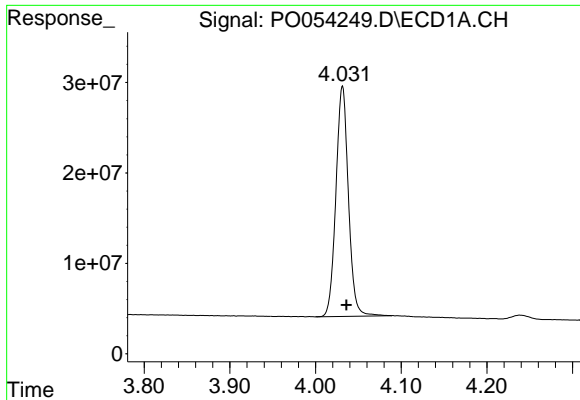
Instrument :  
 ECD\_O  
 Client Sampled :  
 AR1660CCC500

Manual Integrations  
**APPROVED**  
 Sohil  
 3/7/2019 1:44:09 PM

Integration File signal 1: autoint1.e  
 Integration File signal 2: autoint2.e  
 Quant Time: Mar 06 09:52:25 2019  
 Quant Method : Z:\pestpcbsrv\HPCHEM1\ECD\_O\methods\P0030419.M  
 Quant Title : GC EXTRACTABLES  
 QLast Update : Tue Mar 05 06:51:55 2019  
 Response via : Initial Calibration  
 Integrator: ChemStation 6890 Scale Mode: Small noise peaks clipped

Volume Inj. : 2 µl  
 Signal #1 Phase : ZB-MR1 Signal #2 Phase: ZB-MR2  
 Signal #1 Info : 30Mx0.32mmx 0.50µ Signal #2 Info : 30M x 0.32mm x 0.25µm

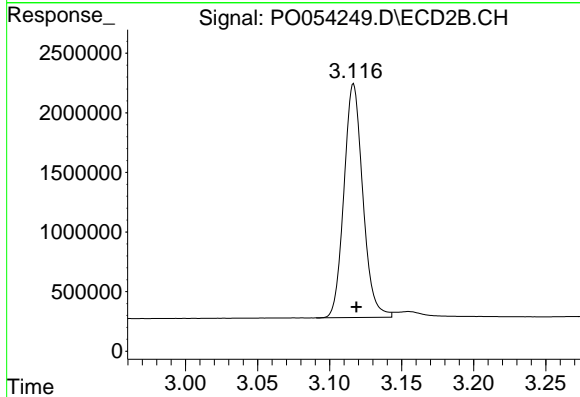




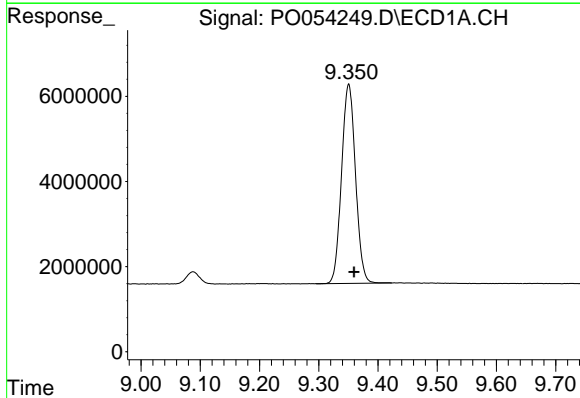
#1 Tetrachloro-m-xylene  
 R.T.: 4.032 min  
 Delta R.T.: -0.004 min  
 Response: 258200479  
 Conc: 46.43 ng/ml

**Instrument :**  
 ECD\_O  
**ClientSampled :**  
 AR1660CCC500

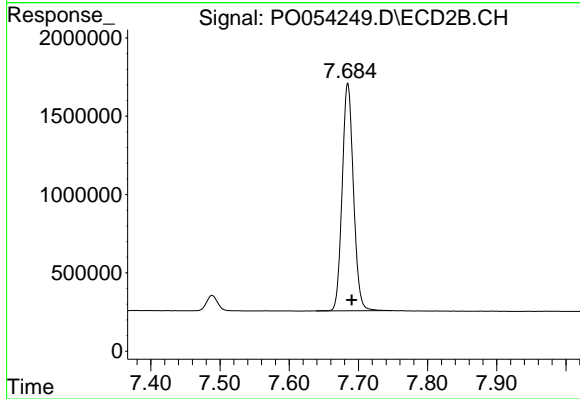
**Manual Integrations**  
**APPROVED**  
 Sohil  
 3/7/2019 1:44:09 PM



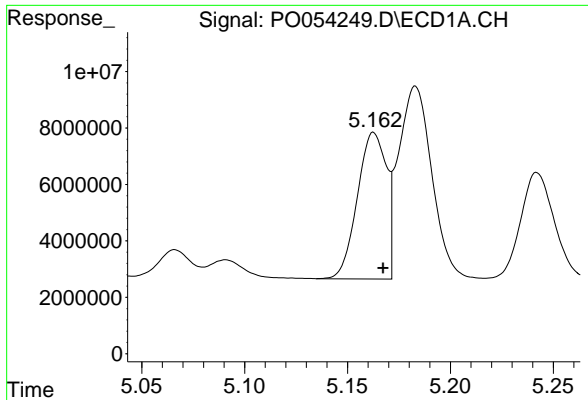
#1 Tetrachloro-m-xylene  
 R.T.: 3.117 min  
 Delta R.T.: -0.002 min  
 Response: 17890388  
 Conc: 56.94 ng/ml



#2 Decachlorobiphenyl  
 R.T.: 9.351 min  
 Delta R.T.: -0.009 min  
 Response: 76600934  
 Conc: 51.59 ng/ml



#2 Decachlorobiphenyl  
 R.T.: 7.685 min  
 Delta R.T.: -0.006 min  
 Response: 16408759  
 Conc: 51.30 ng/ml

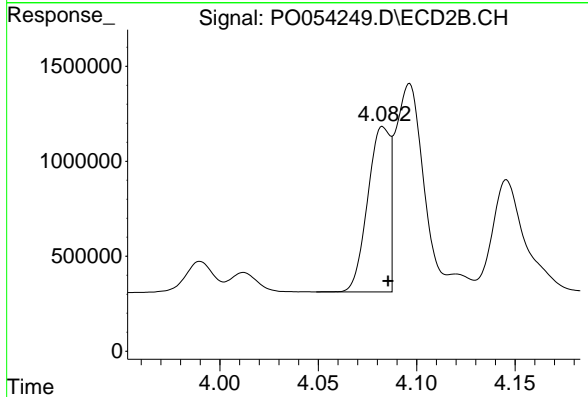


#3 AR-1016-1

R.T.: 5.163 min  
 Delta R.T.: -0.005 min  
 Response: 50957218  
 Conc: 441.66 ng/ml

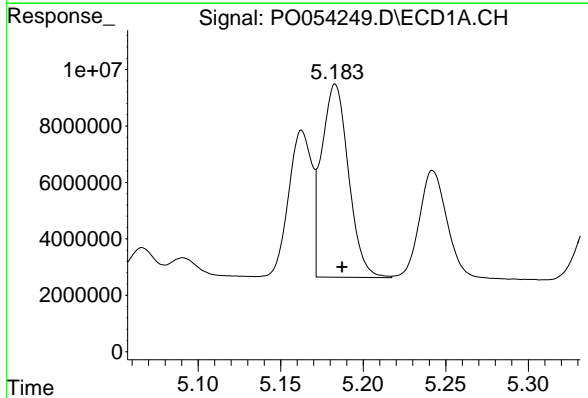
**Instrument :**  
 ECD\_O  
**ClientSampled :**  
 AR1660CCC500

**Manual Integrations**  
**APPROVED**  
 Sohil  
 3/7/2019 1:44:09 PM



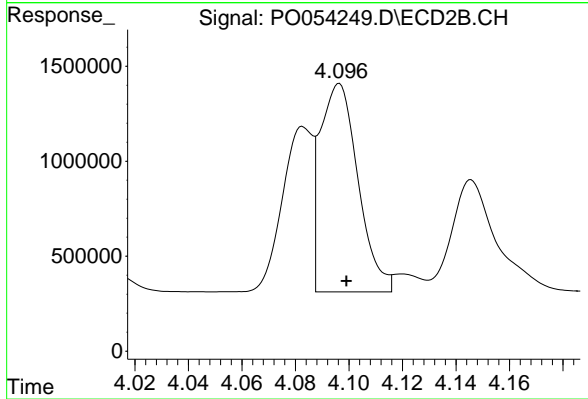
#3 AR-1016-1

R.T.: 4.083 min  
 Delta R.T.: -0.003 min  
 Response: 6777015  
 Conc: 556.32 ng/ml



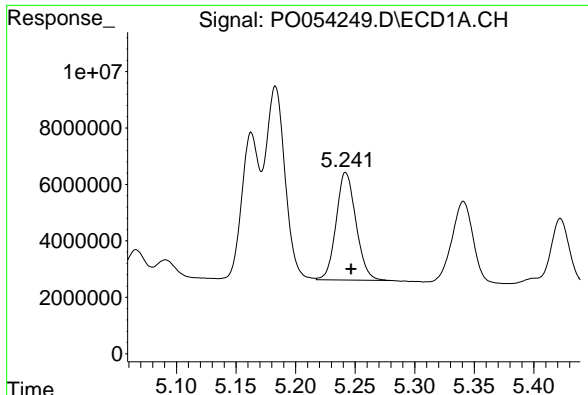
#4 AR-1016-2

R.T.: 5.183 min  
 Delta R.T.: -0.004 min  
 Response: 77599663  
 Conc: 450.73 ng/ml



#4 AR-1016-2

R.T.: 4.096 min  
 Delta R.T.: -0.003 min  
 Response: 10806735  
 Conc: 565.85 ng/ml

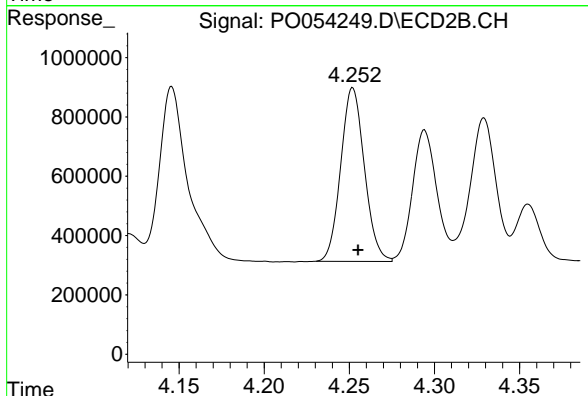


#5 AR-1016-3

R.T.: 5.242 min  
 Delta R.T.: -0.005 min  
 Response: 44121176  
 Conc: 435.02 ng/ml

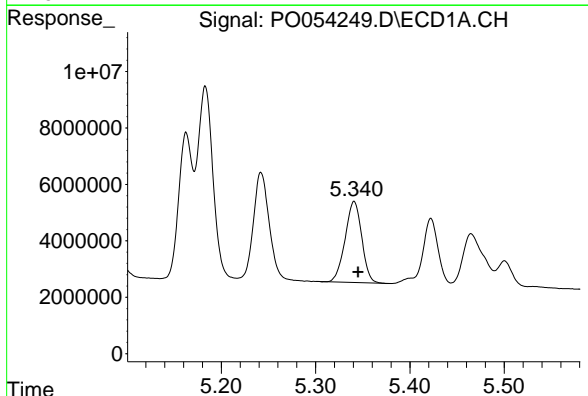
**Instrument :**  
 ECD\_O  
**ClientSampled :**  
 AR1660CCC500

**Manual Integrations**  
**APPROVED**  
 Sohil  
 3/7/2019 1:44:09 PM



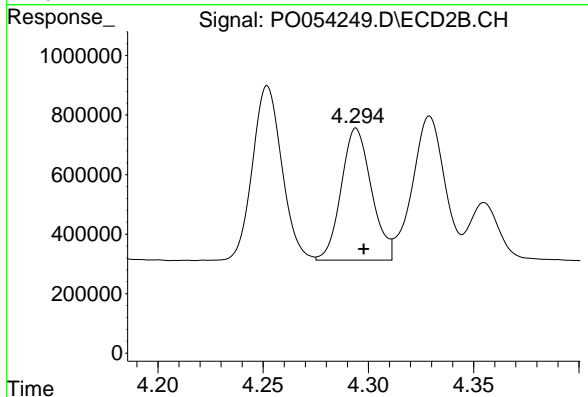
#5 AR-1016-3

R.T.: 4.252 min  
 Delta R.T.: -0.003 min  
 Response: 5661968  
 Conc: 547.22 ng/ml



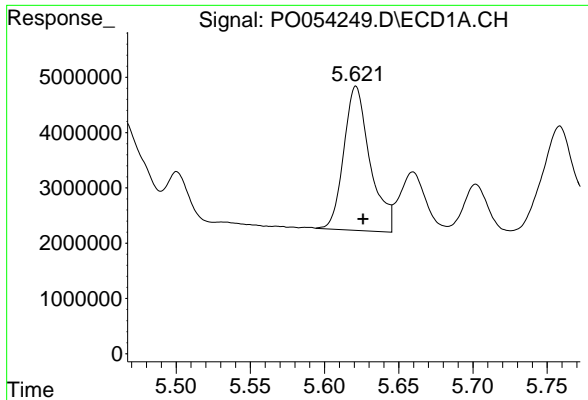
#6 AR-1016-4

R.T.: 5.341 min  
 Delta R.T.: -0.004 min  
 Response: 35212703  
 Conc: 428.42 ng/ml



#6 AR-1016-4

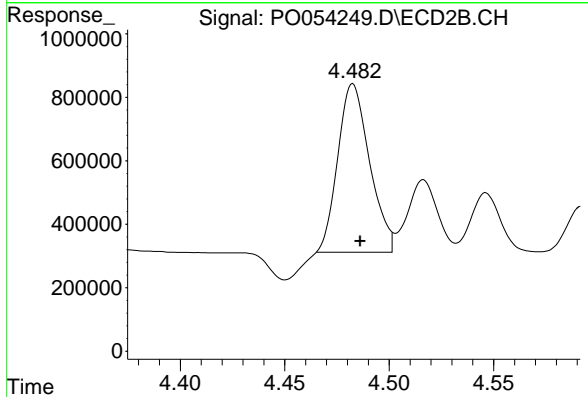
R.T.: 4.294 min  
 Delta R.T.: -0.004 min  
 Response: 4428536  
 Conc: 559.45 ng/ml



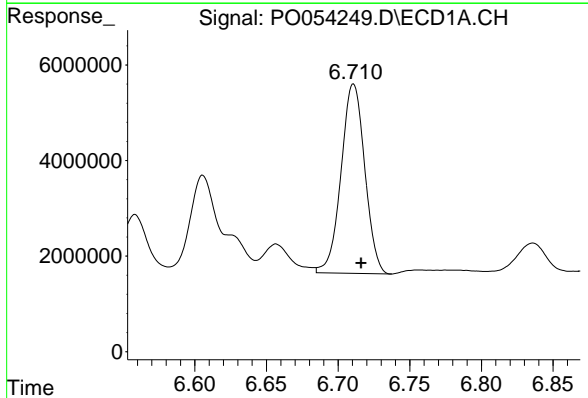
#7 AR-1016-5  
 R.T.: 5.621 min  
 Delta R.T.: -0.005 min  
 Response: 32068107  
 Conc: 458.33 ng/ml

**Instrument :**  
 ECD\_O  
**ClientSampled :**  
 AR1660CCC500

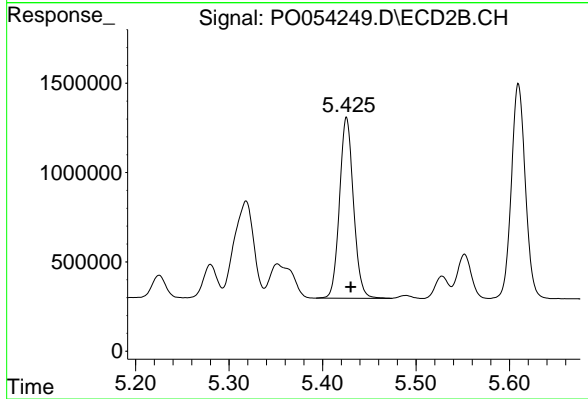
**Manual Integrations**  
**APPROVED**  
 Sohil  
 3/7/2019 1:44:09 PM



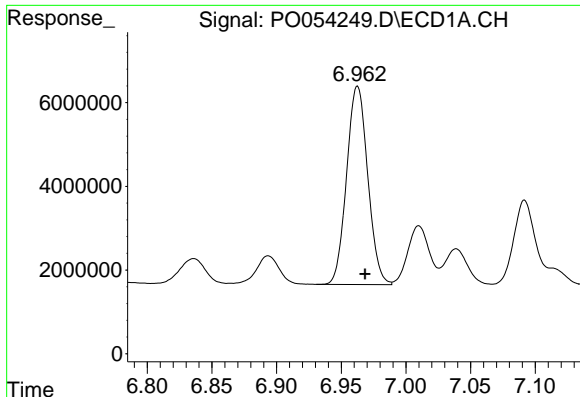
#7 AR-1016-5  
 R.T.: 4.482 min  
 Delta R.T.: -0.004 min  
 Response: 5601673  
 Conc: 535.35 ng/ml m



#31 AR-1260-1  
 R.T.: 6.711 min  
 Delta R.T.: -0.005 min  
 Response: 45648371  
 Conc: 465.26 ng/ml



#31 AR-1260-1  
 R.T.: 5.426 min  
 Delta R.T.: -0.004 min  
 Response: 10538716  
 Conc: 519.86 ng/ml



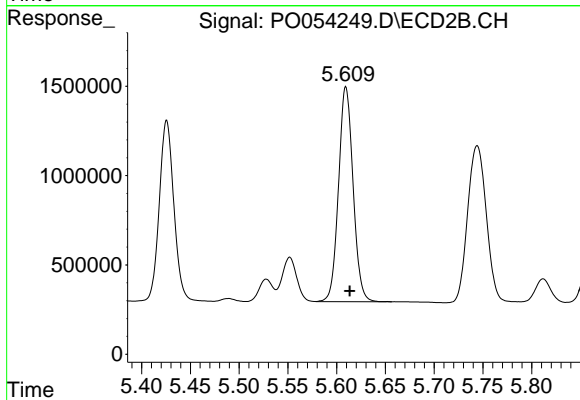
#32 AR-1260-2

R.T.: 6.963 min  
 Delta R.T.: -0.006 min  
 Response: 53978144  
 Conc: 458.57 ng/ml

Instrument :  
 ECD\_O  
 ClientSampled :  
 AR1660CCC500

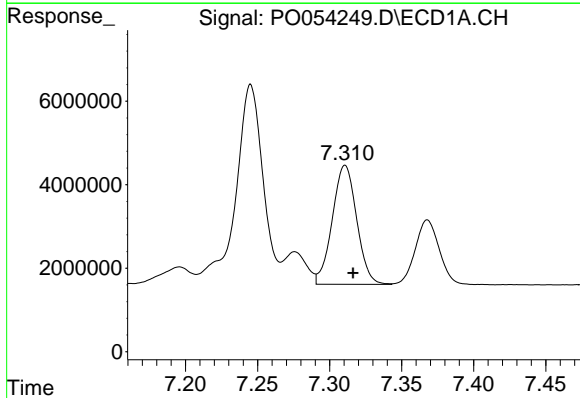
Manual Integrations  
 APPROVED

Sohil  
 3/7/2019 1:44:09 PM



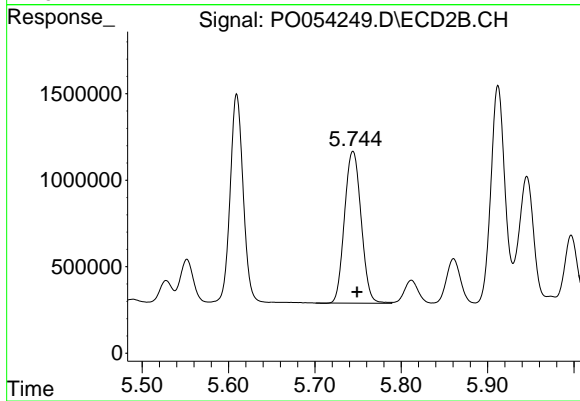
#32 AR-1260-2

R.T.: 5.609 min  
 Delta R.T.: -0.004 min  
 Response: 12505379  
 Conc: 512.56 ng/ml



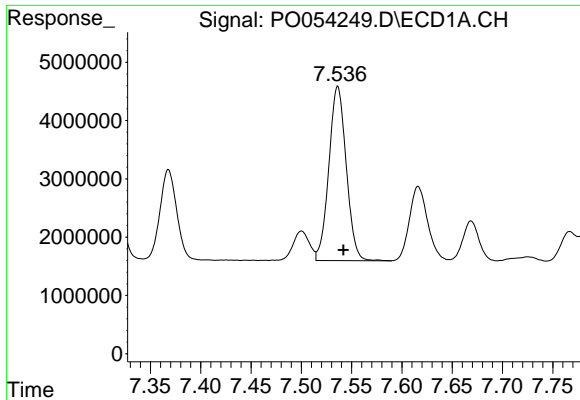
#33 AR-1260-3

R.T.: 7.311 min  
 Delta R.T.: -0.005 min  
 Response: 33667828  
 Conc: 464.94 ng/ml



#33 AR-1260-3

R.T.: 5.744 min  
 Delta R.T.: -0.004 min  
 Response: 11743694  
 Conc: 519.23 ng/ml

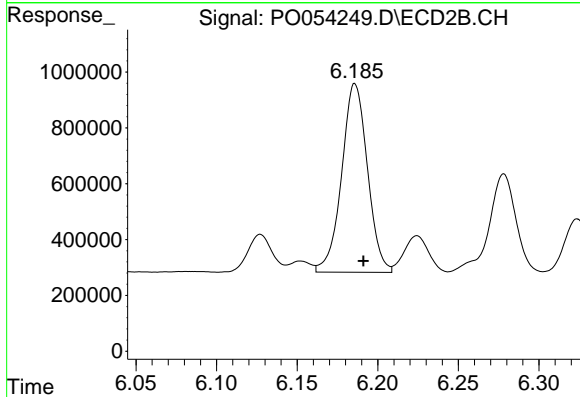


#34 AR-1260-4

R.T.: 7.536 min  
 Delta R.T.: -0.006 min  
 Response: 35914491  
 Conc: 484.94 ng/ml

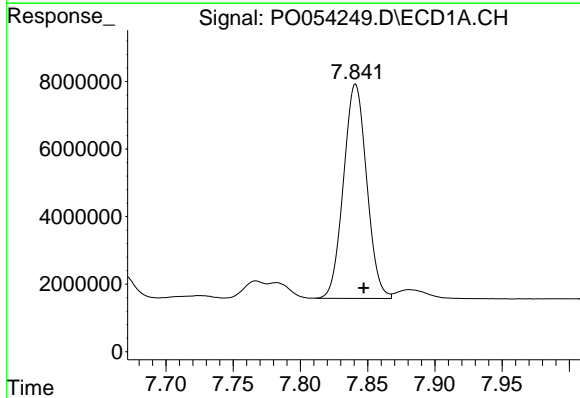
**Instrument :**  
 ECD\_O  
**ClientSampled :**  
 AR1660CCC500

**Manual Integrations**  
**APPROVED**  
 Sohil  
 3/7/2019 1:44:09 PM



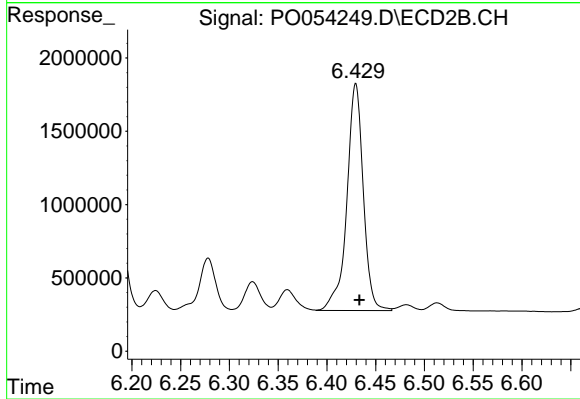
#34 AR-1260-4

R.T.: 6.186 min  
 Delta R.T.: -0.005 min  
 Response: 7539204  
 Conc: 528.30 ng/ml



#35 AR-1260-5

R.T.: 7.841 min  
 Delta R.T.: -0.006 min  
 Response: 76013039  
 Conc: 494.62 ng/ml



#35 AR-1260-5

R.T.: 6.430 min  
 Delta R.T.: -0.004 min  
 Response: 18168201  
 Conc: 522.54 ng/ml