

Data Path : Z:\pestpcbsrv\HPCHEM1\ECD_0\Data\P0030625\
 Data File : P0109677.D
 Signal(s) : Signal #1: ECD1A.ch Signal #2: ECD2B.ch
 Acq On : 06 Mar 2025 22:19
 Operator : YP/AJ
 Sample : AR1660CCC500
 Misc :
 ALS Vial : 3 Sample Multiplier: 1

Instrument :
 ECD_0
ClientSampleId :
 AR1660CCC500

Manual Integrations
APPROVED
 Reviewed By :Yogesh Patel 03/07/2025
 Supervised By :mohammad ahmed 03/08/2025

Integration File signal 1: autoint1.e
 Integration File signal 2: autoint2.e
 Quant Time: Mar 07 00:13:41 2025
 Quant Method : Z:\pestpcbsrv\HPCHEM1\ECD_0\methods\P0022025.M
 Quant Title : GC EXTRACTABLES
 QLast Update : Fri Feb 21 04:40:23 2025
 Response via : Initial Calibration
 Integrator: ChemStation

Volume Inj. : 2 µl
 Signal #1 Phase : ZB-MR1 Signal #2 Phase: ZB-MR2
 Signal #1 Info : 30Mx0.32mmx 0.50µ Signal #2 Info : 30M x 0.32mm x 0.25µm

Compound	RT#1	RT#2	Resp#1	Resp#2	ng/ml	ng/ml

System Monitoring Compounds						
1) SA Tetrachlo...	3.696	3.694	479.5E6	290.0E6	50.663	55.410
2) SA Decachlor...	8.753	8.707	372.8E6	147.0E6	43.337	46.157
Target Compounds						
3) L1 AR-1016-1	4.790	4.777	159.2E6	86391265	516.411	553.185
4) L1 AR-1016-2	4.810	4.796	219.4E6	123.5E6	521.043	570.410
5) L1 AR-1016-3	4.866	4.972	152.9E6	67369580	516.797	563.992
6) L1 AR-1016-4	4.987	5.014	120.0E6	47540849	517.713	456.814
7) L1 AR-1016-5	5.244	5.227	126.3E6	72786421	489.290m	534.198m
31) L7 AR-1260-1	6.286	6.260	244.6E6	130.6E6	524.713	551.439
32) L7 AR-1260-2	6.475	6.448	286.8E6	151.6E6	507.569	550.916
33) L7 AR-1260-3	6.843	6.601	231.2E6	136.1E6	485.993	533.731
34) L7 AR-1260-4	7.104	7.073	206.9E6	107.0E6	479.345	518.866
35) L7 AR-1260-5	7.345	7.314	478.2E6	238.7E6	481.103	533.176

(f)=RT Delta > 1/2 Window (#)=Amounts differ by > 25% (m)=manual int.

Data Path : Z:\pestpcbsrv\HPCHEM1\ECD_O\Data\PO030625\
 Data File : PO109677.D
 Signal(s) : Signal #1: ECD1A.ch Signal #2: ECD2B.ch
 Acq On : 06 Mar 2025 22:19
 Operator : YP/AJ
 Sample : AR1660CCC500
 Misc :
 ALS Vial : 3 Sample Multiplier: 1

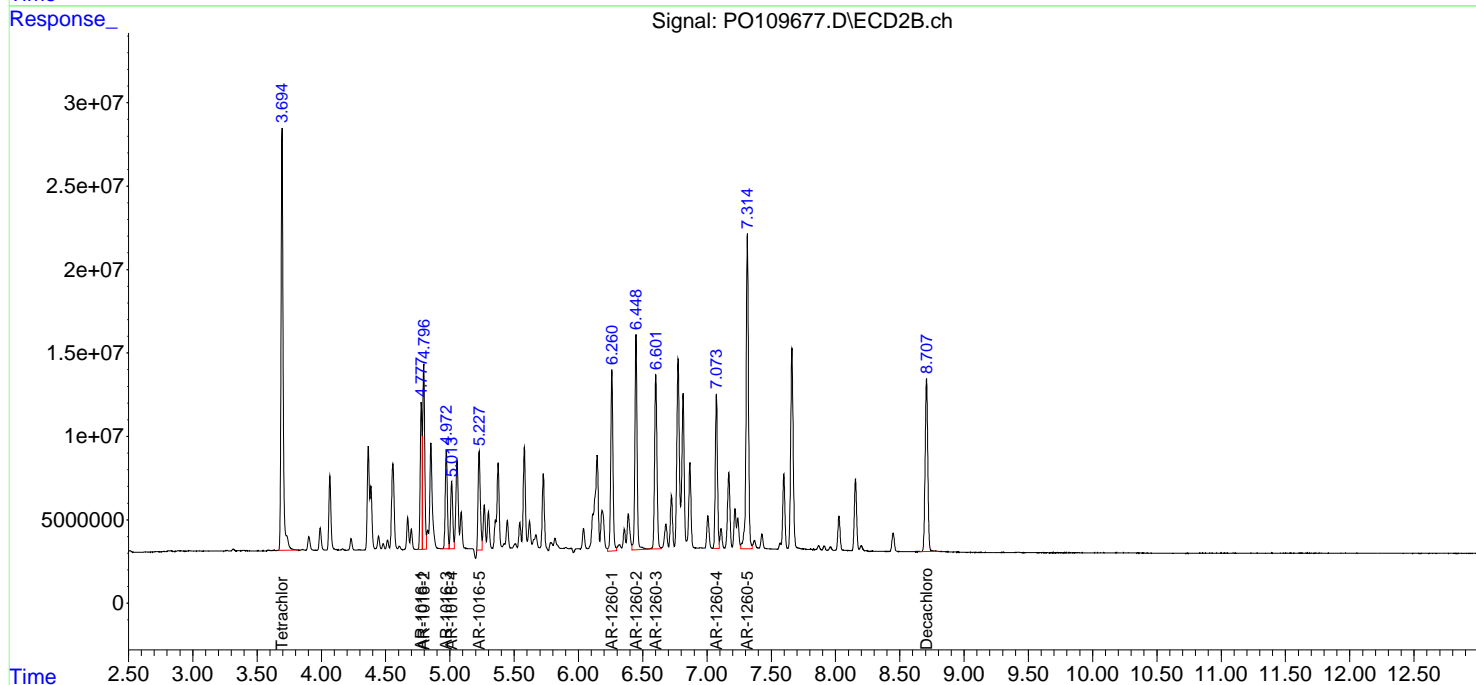
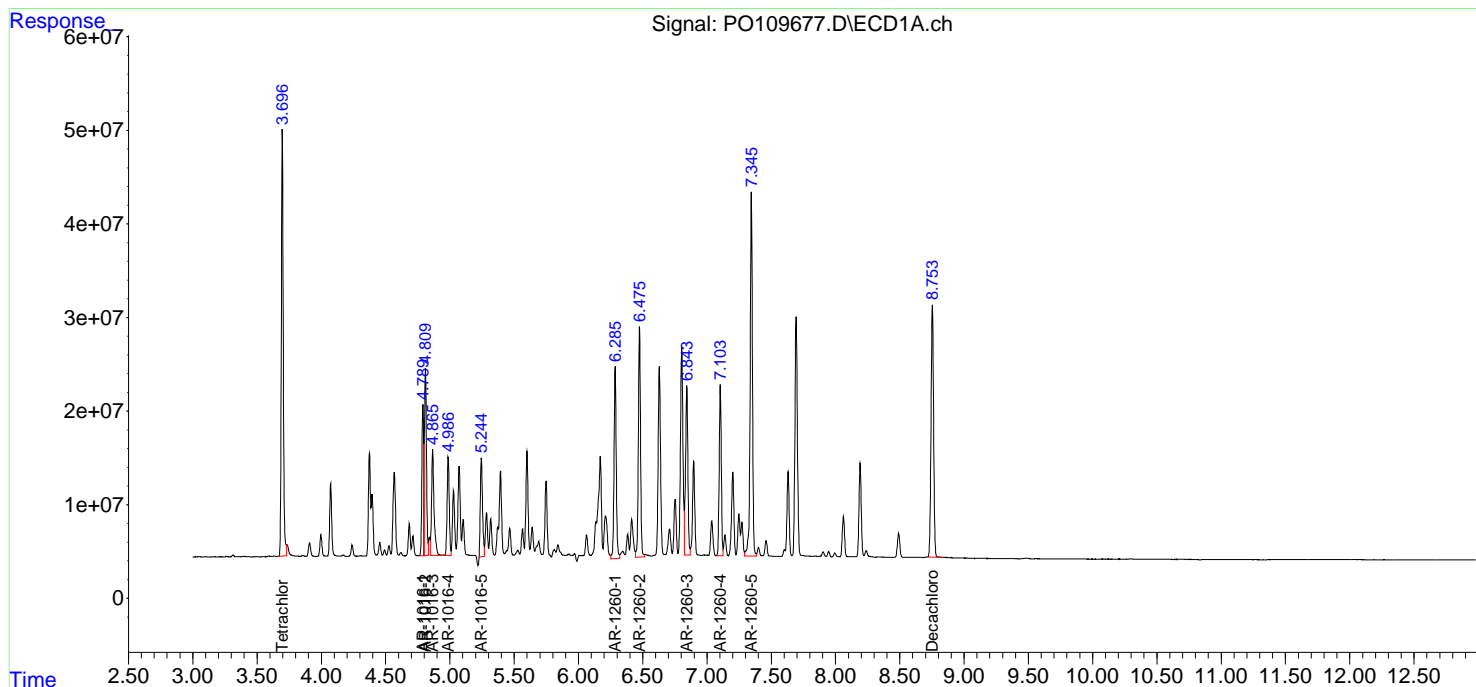
Instrument :
 ECD_O
ClientSampleId :
 AR1660CCC500

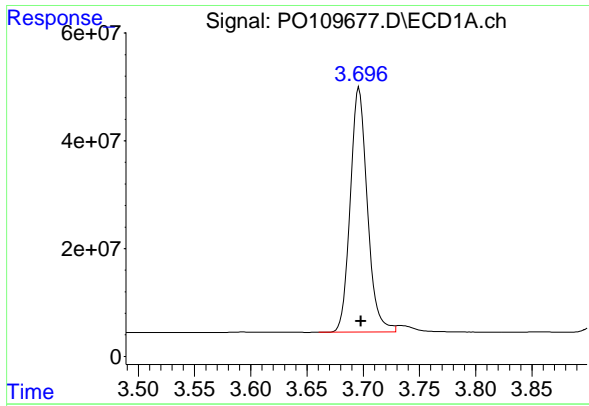
Manual Integrations
APPROVED

Reviewed By :Yogesh Patel 03/07/2025
 Supervised By :mohammad ahmed 03/08/2025

Integration File signal 1: autoint1.e
 Integration File signal 2: autoint2.e
 Quant Time: Mar 07 00:13:41 2025
 Quant Method : Z:\pestpcbsrv\HPCHEM1\ECD_O\methods\PO022025.M
 Quant Title : GC EXTRACTABLES
 QLast Update : Fri Feb 21 04:40:23 2025
 Response via : Initial Calibration
 Integrator: ChemStation

Volume Inj. : 2 µl
 Signal #1 Phase : ZB-MR1 Signal #2 Phase: ZB-MR2
 Signal #1 Info : 30Mx0.32mmx 0.50µ Signal #2 Info : 30M x 0.32mm x 0.25µm





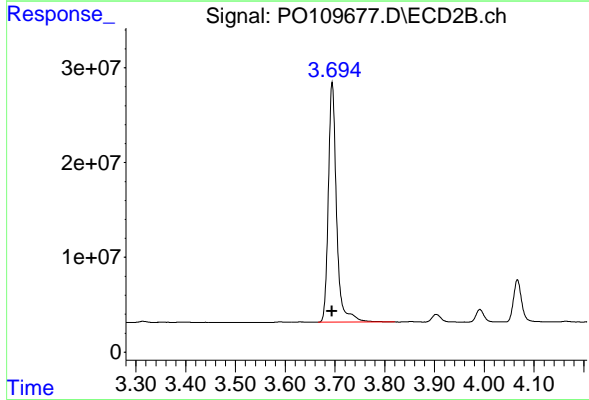
#1 Tetrachloro-m-xylene

R.T.: 3.696 min
 Delta R.T.: -0.002 min
 Response: 479534083
 Conc: 50.66 ng/ml

Instrument :
 ECD_O
 ClientSampleId :
 AR1660CCC500

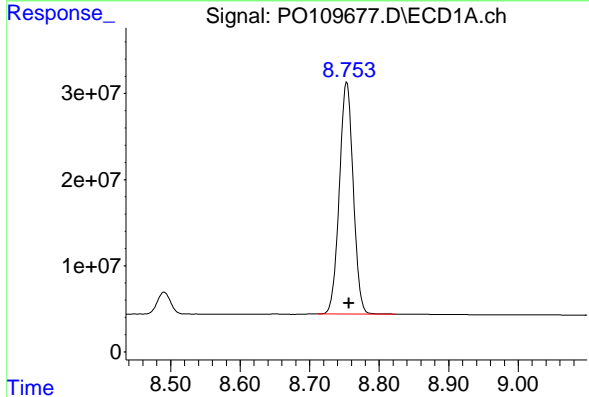
Manual Integrations
 APPROVED

Reviewed By :Yogesh Patel 03/07/2025
 Supervised By :mohammad ahmed 03/08/2025



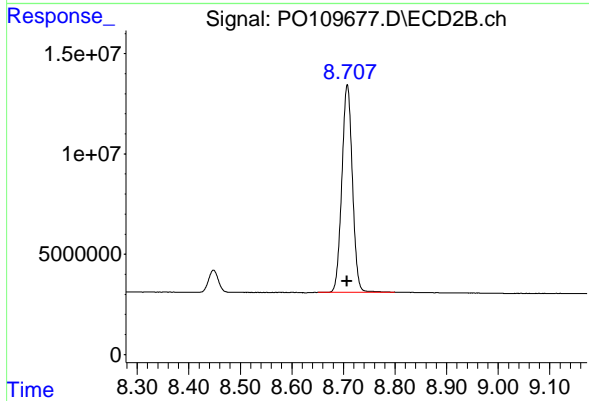
#1 Tetrachloro-m-xylene

R.T.: 3.694 min
 Delta R.T.: 0.000 min
 Response: 290029367
 Conc: 55.41 ng/ml



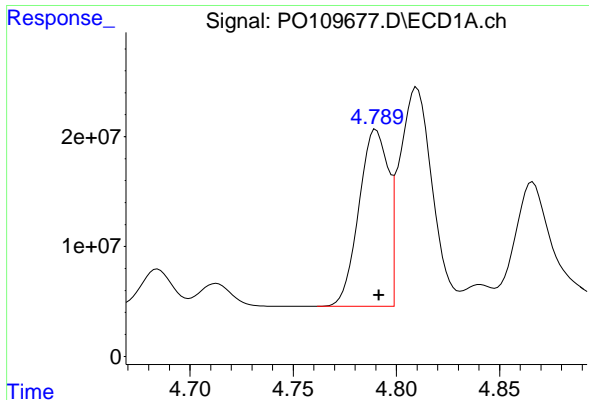
#2 Decachlorobiphenyl

R.T.: 8.753 min
 Delta R.T.: -0.003 min
 Response: 372776554
 Conc: 43.34 ng/ml



#2 Decachlorobiphenyl

R.T.: 8.707 min
 Delta R.T.: 0.000 min
 Response: 146976581
 Conc: 46.16 ng/ml



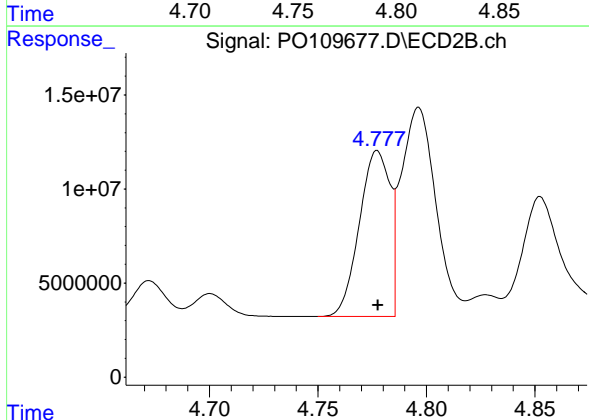
#3 AR-1016-1

R.T.: 4.790 min
 Delta R.T.: -0.001 min
 Response: 159204504
 Conc: 516.41 ng/ml

Instrument :
 ECD_O
 ClientSampleId :
 AR1660CCC500

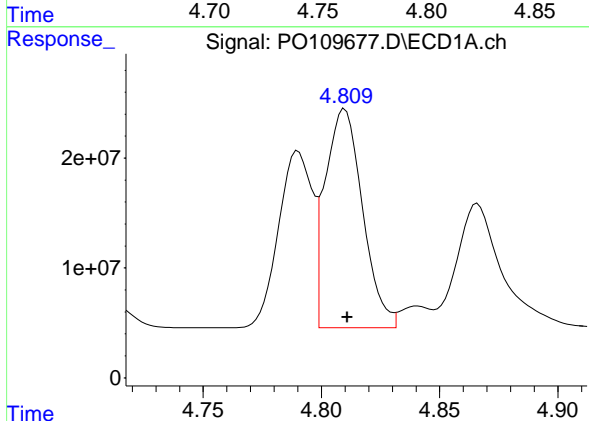
Manual Integrations
 APPROVED

Reviewed By :Yogesh Patel 03/07/2025
 Supervised By :mohammad ahmed 03/08/2025



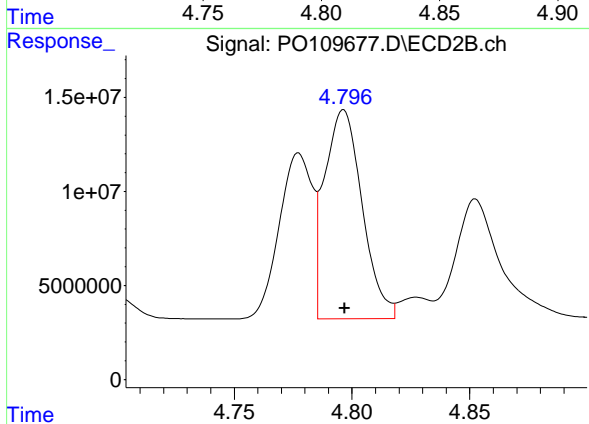
#3 AR-1016-1

R.T.: 4.777 min
 Delta R.T.: 0.000 min
 Response: 86391265
 Conc: 553.19 ng/ml



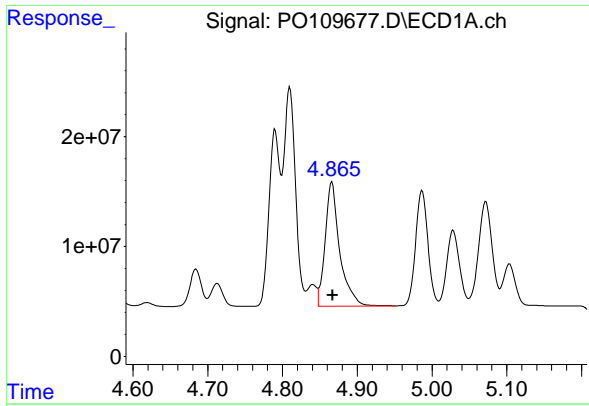
#4 AR-1016-2

R.T.: 4.810 min
 Delta R.T.: -0.001 min
 Response: 219372755
 Conc: 521.04 ng/ml



#4 AR-1016-2

R.T.: 4.796 min
 Delta R.T.: 0.000 min
 Response: 123456067
 Conc: 570.41 ng/ml



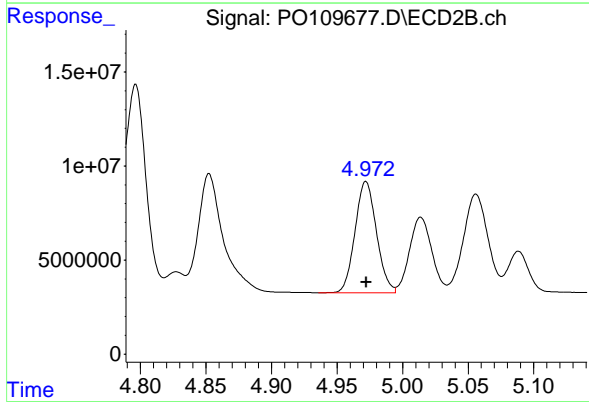
#5 AR-1016-3

R.T.: 4.866 min
 Delta R.T.: -0.001 min
 Response: 152877271
 Conc: 516.80 ng/ml

Instrument :
 ECD_O
 ClientSampleId :
 AR1660CCC500

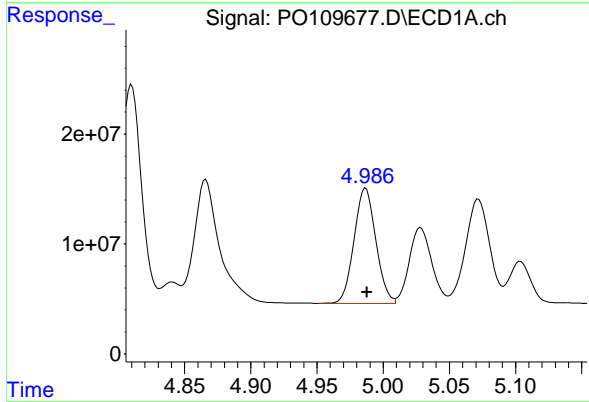
Manual Integrations
 APPROVED

Reviewed By :Yogesh Patel 03/07/2025
 Supervised By :mohammad ahmed 03/08/2025



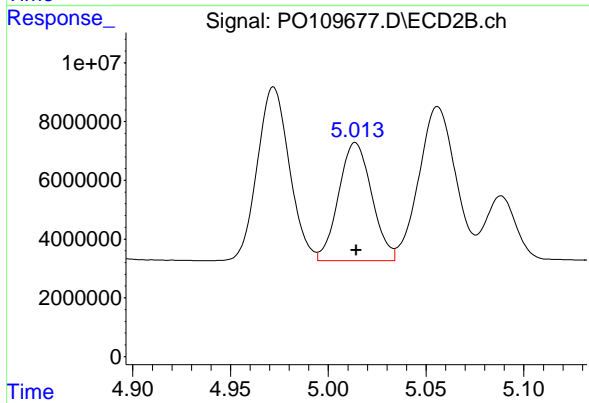
#5 AR-1016-3

R.T.: 4.972 min
 Delta R.T.: 0.000 min
 Response: 67369580
 Conc: 563.99 ng/ml



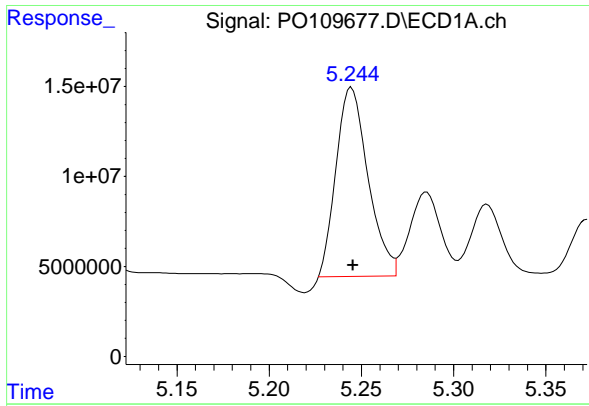
#6 AR-1016-4

R.T.: 4.987 min
 Delta R.T.: -0.001 min
 Response: 119995479
 Conc: 517.71 ng/ml



#6 AR-1016-4

R.T.: 5.014 min
 Delta R.T.: 0.000 min
 Response: 47540849
 Conc: 456.81 ng/ml



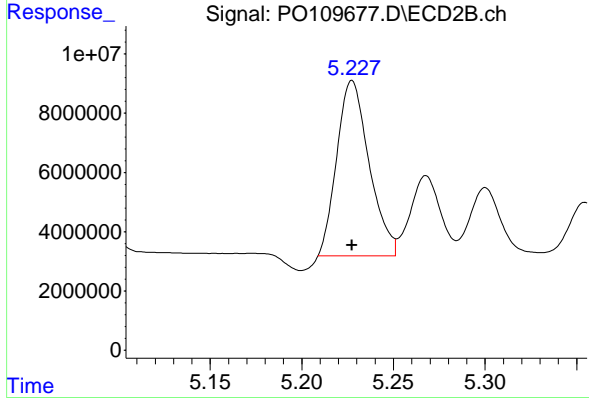
#7 AR-1016-5

R.T.: 5.244 min
 Delta R.T.: -0.001 min
 Response: 126349287
 Conc: 489.29 ng/ml

Instrument :
 ECD_O
 ClientSampleId :
 AR1660CCC500

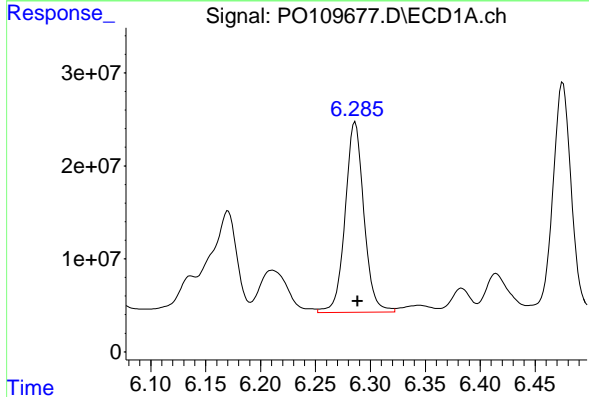
Manual Integrations
 APPROVED

Reviewed By :Yogesh Patel 03/07/2025
 Supervised By :mohammad ahmed 03/08/2025



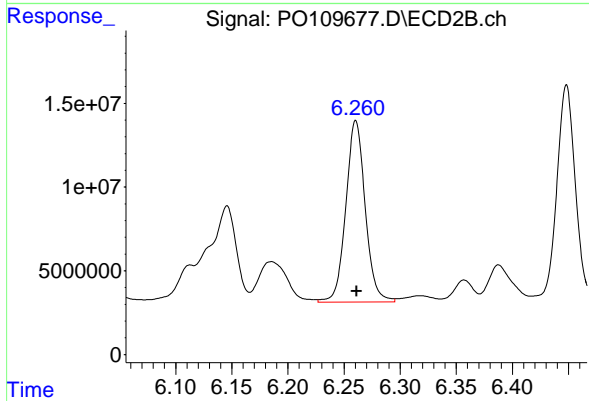
#7 AR-1016-5

R.T.: 5.227 min
 Delta R.T.: 0.000 min
 Response: 72786421
 Conc: 534.20 ng/ml m



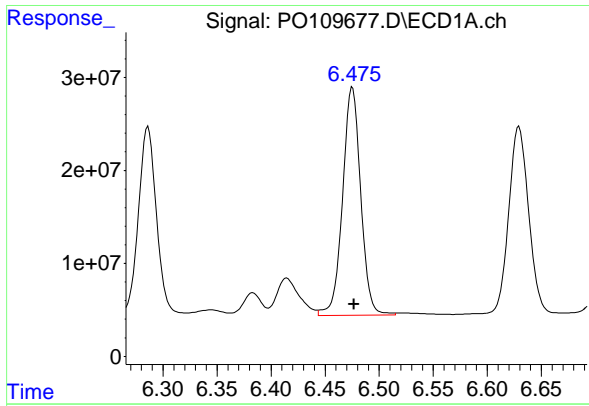
#31 AR-1260-1

R.T.: 6.286 min
 Delta R.T.: -0.002 min
 Response: 244585283
 Conc: 524.71 ng/ml



#31 AR-1260-1

R.T.: 6.260 min
 Delta R.T.: 0.000 min
 Response: 130646847
 Conc: 551.44 ng/ml



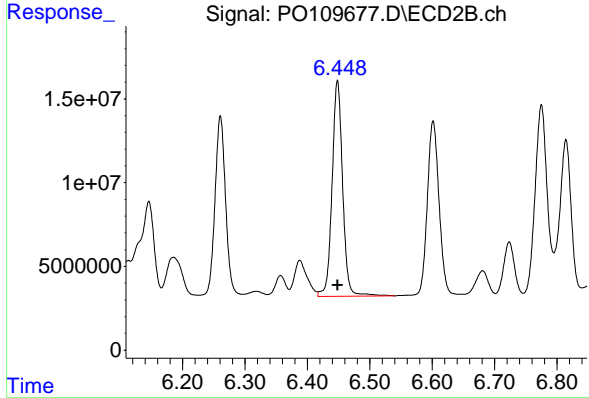
#32 AR-1260-2

R.T.: 6.475 min
 Delta R.T.: -0.001 min
 Response: 286836357
 Conc: 507.57 ng/ml

Instrument :
 ECD_O
 ClientSampleId :
 AR1660CCC500

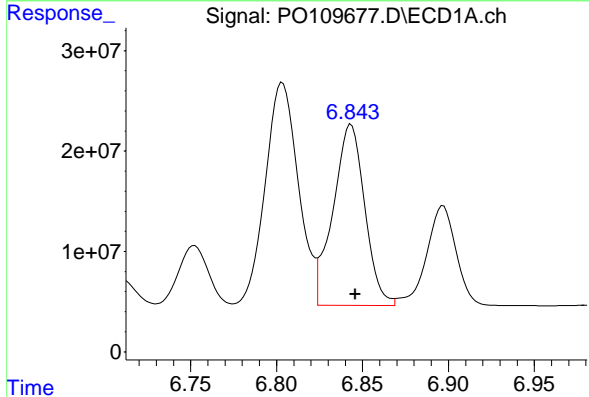
Manual Integrations
 APPROVED

Reviewed By :Yogesh Patel 03/07/2025
 Supervised By :mohammad ahmed 03/08/2025



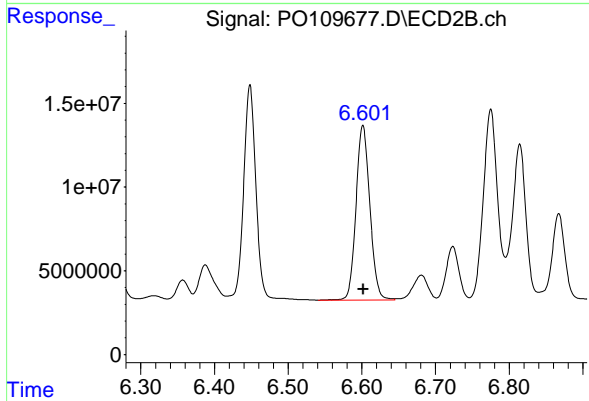
#32 AR-1260-2

R.T.: 6.448 min
 Delta R.T.: 0.000 min
 Response: 151596306
 Conc: 550.92 ng/ml



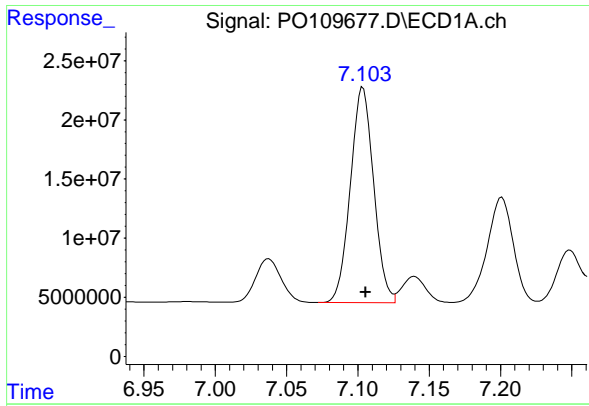
#33 AR-1260-3

R.T.: 6.843 min
 Delta R.T.: -0.002 min
 Response: 231168184
 Conc: 485.99 ng/ml



#33 AR-1260-3

R.T.: 6.601 min
 Delta R.T.: 0.000 min
 Response: 136138798
 Conc: 533.73 ng/ml



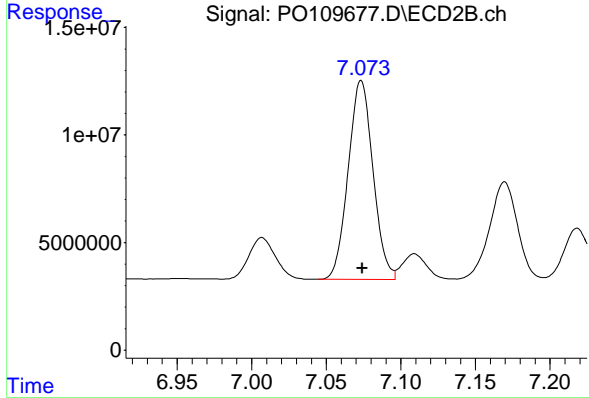
#34 AR-1260-4

R.T.: 7.104 min
 Delta R.T.: -0.002 min
 Response: 206885987
 Conc: 479.35 ng/ml

Instrument :
 ECD_O
 ClientSampleId :
 AR1660CCC500

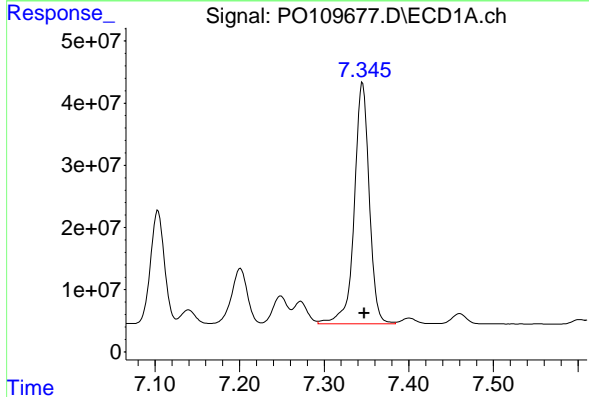
Manual Integrations
 APPROVED

Reviewed By :Yogesh Patel 03/07/2025
 Supervised By :mohammad ahmed 03/08/2025



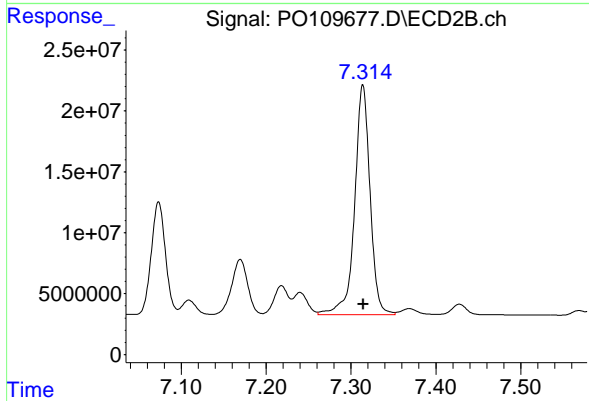
#34 AR-1260-4

R.T.: 7.073 min
 Delta R.T.: 0.000 min
 Response: 106986152
 Conc: 518.87 ng/ml



#35 AR-1260-5

R.T.: 7.345 min
 Delta R.T.: -0.002 min
 Response: 478159544
 Conc: 481.10 ng/ml



#35 AR-1260-5

R.T.: 7.314 min
 Delta R.T.: 0.000 min
 Response: 238747040
 Conc: 533.18 ng/ml