

Data Path : Z:\pestpcbsrv\HPCHEM1\ECD\_0\Data\P0030625\  
 Data File : P0109690.D  
 Signal(s) : Signal #1: ECD1A.ch Signal #2: ECD2B.ch  
 Acq On : 07 Mar 2025 02:55  
 Operator : YP/AJ  
 Sample : Q1434-05  
 Misc :  
 ALS Vial : 34 Sample Multiplier: 1

**Instrument :**  
 ECD\_0  
**ClientSampleId :**  
 K084-5C

**Manual Integrations**  
**APPROVED**

Reviewed By :Yogesh Patel 03/07/2025  
 Supervised By :mohammad ahmed 03/08/2025

Integration File signal 1: autoint1.e  
 Integration File signal 2: autoint2.e  
 Quant Time: Mar 07 04:46:28 2025  
 Quant Method : Z:\pestpcbsrv\HPCHEM1\ECD\_0\methods\P0022025.M  
 Quant Title : GC EXTRACTABLES  
 QLast Update : Fri Feb 21 04:40:23 2025  
 Response via : Initial Calibration  
 Integrator: ChemStation

Volume Inj. : 2 µl  
 Signal #1 Phase : ZB-MR1 Signal #2 Phase: ZB-MR2  
 Signal #1 Info : 30Mx0.32mmx 0.50µ Signal #2 Info : 30M x 0.32mm x 0.25µm

Compound	RT#1	RT#2	Resp#1	Resp#2	ng/ml	ng/ml
-----						
System Monitoring Compounds						
1) SA Tetrachlo...	3.697	3.694	228.0E6	131.3E6	24.089	25.087
2) SA Decachlor...	8.753	8.705	185.9E6	74016912	21.613m	23.245
Target Compounds						
26) L6 AR-1254-1	5.600	5.579	322.6E6	184.3E6	625.721	704.765
27) L6 AR-1254-2	5.749	5.727	515.7E6	293.0E6	1144.945	1249.036
28) L6 AR-1254-3	6.154	6.130	1165.8E6	640.9E6	1628.313	1796.629
29) L6 AR-1254-4	6.384	6.358	605.9E6	315.4E6	1446.839	1633.353
30) L6 AR-1254-5	6.804	6.775	3877.3E6	2080.3E6	6214.640	7010.598
41) L9 AR-1268-1	7.632	7.599	112.3E6	55633768	84.803	97.362m
42) L9 AR-1268-2	7.694	7.660	331.7E6	114.3E6	274.324	217.830
43) L9 AR-1268-3	7.905	7.870	58669599	25818422	57.622	60.317m
44) L9 AR-1268-4	8.193	8.155	57350665	28773824	134.988	178.348 #
45) L9 AR-1268-5	8.492	8.449	166.4E6	79193615	55.120	72.446 #
-----						

(f)=RT Delta > 1/2 Window (#)=Amounts differ by > 25% (m)=manual int.

Data Path : Z:\pestpcbsrv\HPCHEM1\ECD\_O\Data\PO030625\  
 Data File : PO109690.D  
 Signal(s) : Signal #1: ECD1A.ch Signal #2: ECD2B.ch  
 Acq On : 07 Mar 2025 02:55  
 Operator : YP/AJ  
 Sample : Q1434-05  
 Misc :  
 ALS Vial : 34 Sample Multiplier: 1

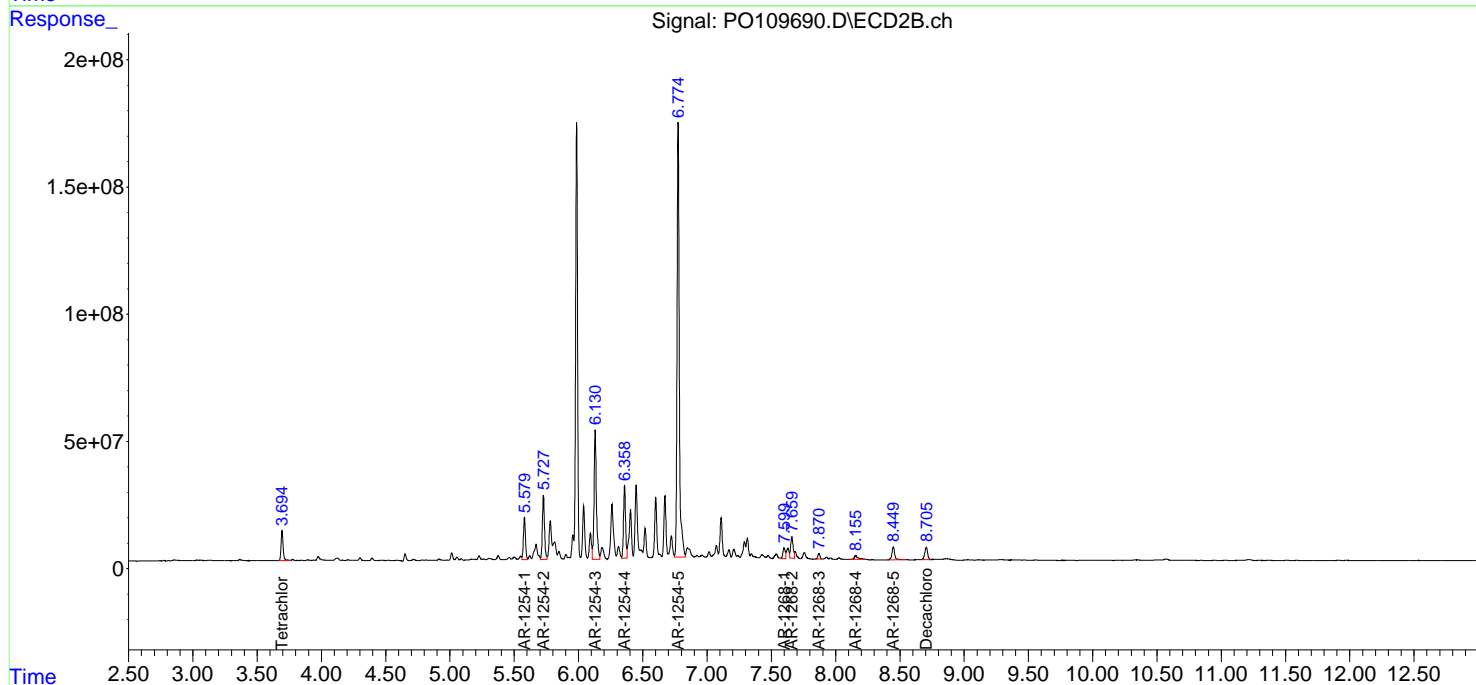
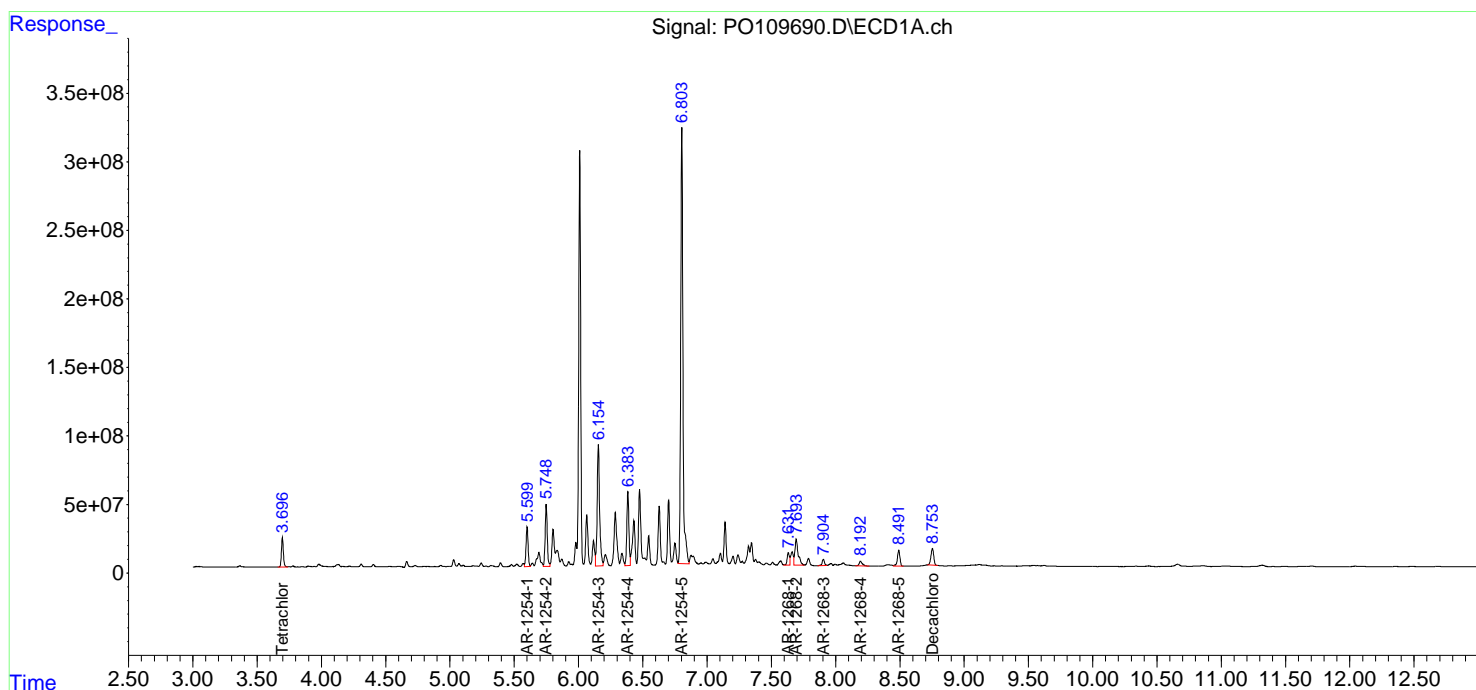
Instrument :  
 ECD\_O  
 ClientSampleId :  
 K084-5C

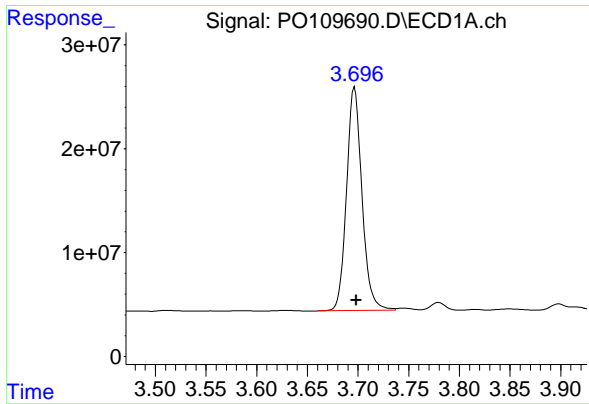
Manual Integrations  
 APPROVED

Reviewed By :Yogesh Patel 03/07/2025  
 Supervised By :mohammad ahmed 03/08/2025

Integration File signal 1: autoint1.e  
 Integration File signal 2: autoint2.e  
 Quant Time: Mar 07 04:46:28 2025  
 Quant Method : Z:\pestpcbsrv\HPCHEM1\ECD\_O\methods\PO022025.M  
 Quant Title : GC EXTRACTABLES  
 QLast Update : Fri Feb 21 04:40:23 2025  
 Response via : Initial Calibration  
 Integrator: ChemStation

Volume Inj. : 2 µl  
 Signal #1 Phase : ZB-MR1 Signal #2 Phase: ZB-MR2  
 Signal #1 Info : 30Mx0.32mmx 0.50µm Signal #2 Info : 30M x 0.32mm x 0.25µm





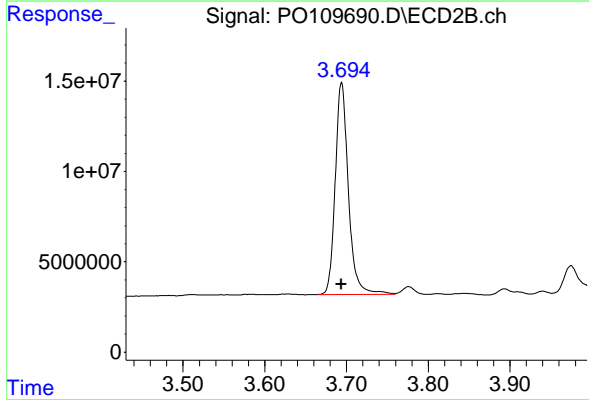
#1 Tetrachloro-m-xylene

R.T.: 3.697 min  
 Delta R.T.: -0.001 min  
 Response: 228009265  
 Conc: 24.09 ng/ml

Instrument :  
 ECD\_O  
 ClientSampleId :  
 K084-5C

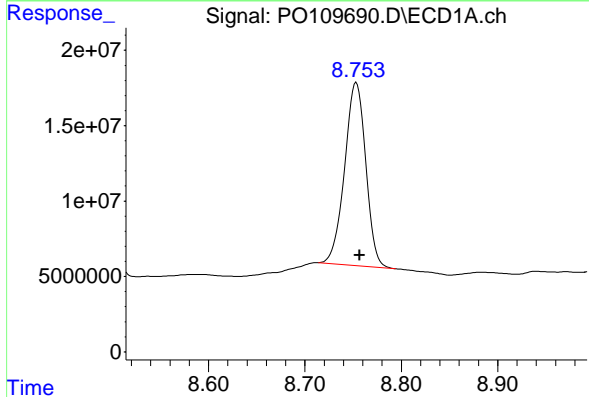
Manual Integrations  
 APPROVED

Reviewed By :Yogesh Patel 03/07/2025  
 Supervised By :mohammad ahmed 03/08/2025



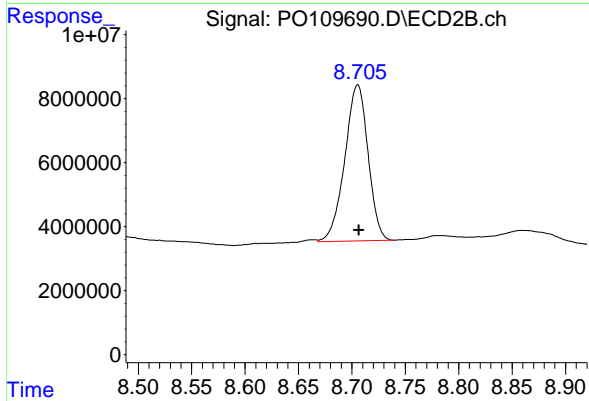
#1 Tetrachloro-m-xylene

R.T.: 3.694 min  
 Delta R.T.: 0.000 min  
 Response: 131313150  
 Conc: 25.09 ng/ml



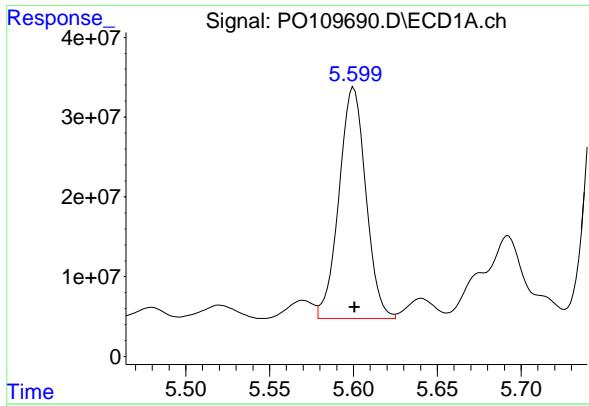
#2 Decachlorobiphenyl

R.T.: 8.753 min  
 Delta R.T.: -0.004 min  
 Response: 185912389  
 Conc: 21.61 ng/ml m



#2 Decachlorobiphenyl

R.T.: 8.705 min  
 Delta R.T.: -0.001 min  
 Response: 74016912  
 Conc: 23.24 ng/ml



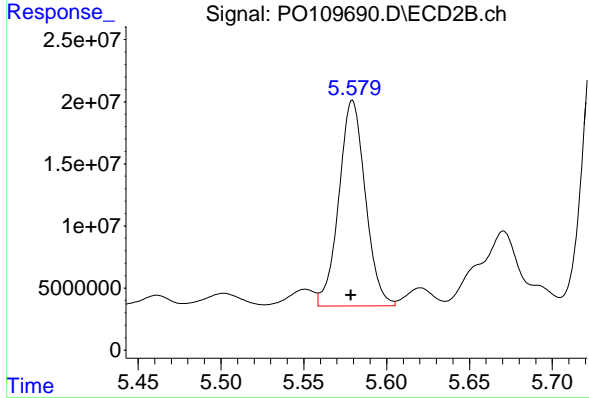
#26 AR-1254-1

R.T.: 5.600 min  
 Delta R.T.: 0.000 min  
 Response: 322625913  
 Conc: 625.72 ng/ml

Instrument : ECD\_O  
 Client Sample Id : K084-5C

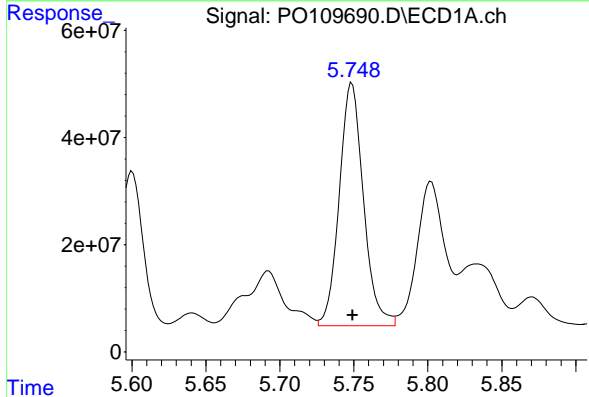
Manual Integrations  
 APPROVED

Reviewed By :Yogesh Patel 03/07/2025  
 Supervised By :mohammad ahmed 03/08/2025



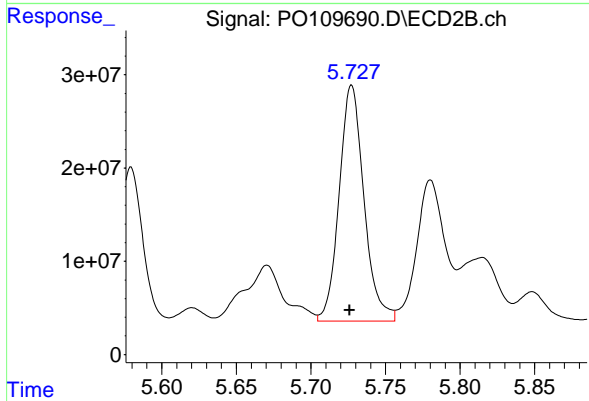
#26 AR-1254-1

R.T.: 5.579 min  
 Delta R.T.: 0.000 min  
 Response: 184323017  
 Conc: 704.76 ng/ml



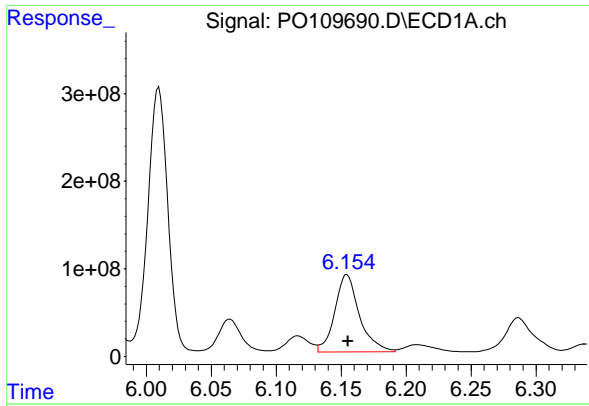
#27 AR-1254-2

R.T.: 5.749 min  
 Delta R.T.: 0.000 min  
 Response: 515654226  
 Conc: 1144.95 ng/ml



#27 AR-1254-2

R.T.: 5.727 min  
 Delta R.T.: 0.001 min  
 Response: 292975790  
 Conc: 1249.04 ng/ml



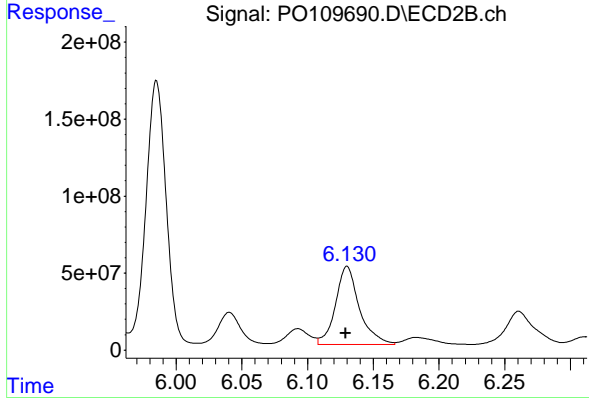
#28 AR-1254-3

R.T.: 6.154 min  
 Delta R.T.: 0.000 min  
 Response: 1165799709  
 Conc: 1628.31 ng/ml

Instrument :  
 ECD\_O  
 ClientSampleId :  
 K084-5C

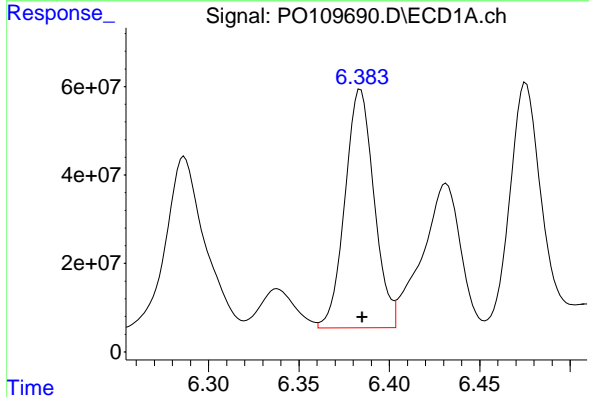
Manual Integrations  
 APPROVED

Reviewed By :Yogesh Patel 03/07/2025  
 Supervised By :mohammad ahmed 03/08/2025



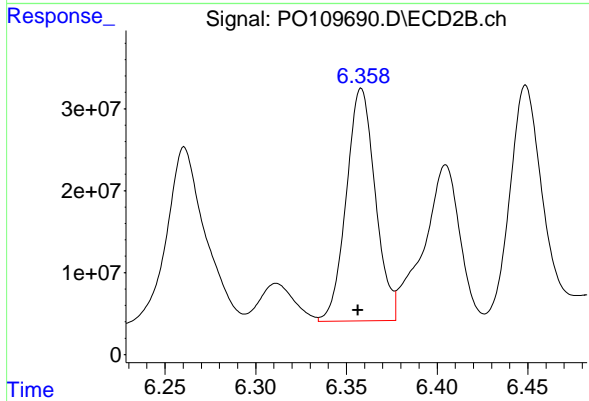
#28 AR-1254-3

R.T.: 6.130 min  
 Delta R.T.: 0.001 min  
 Response: 640865823  
 Conc: 1796.63 ng/ml



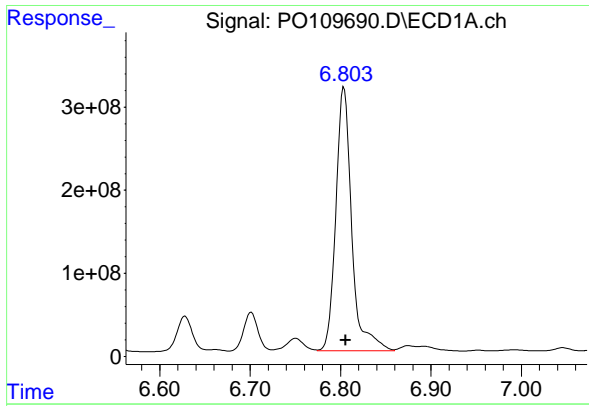
#29 AR-1254-4

R.T.: 6.384 min  
 Delta R.T.: 0.000 min  
 Response: 605923703  
 Conc: 1446.84 ng/ml



#29 AR-1254-4

R.T.: 6.358 min  
 Delta R.T.: 0.002 min  
 Response: 315438684  
 Conc: 1633.35 ng/ml



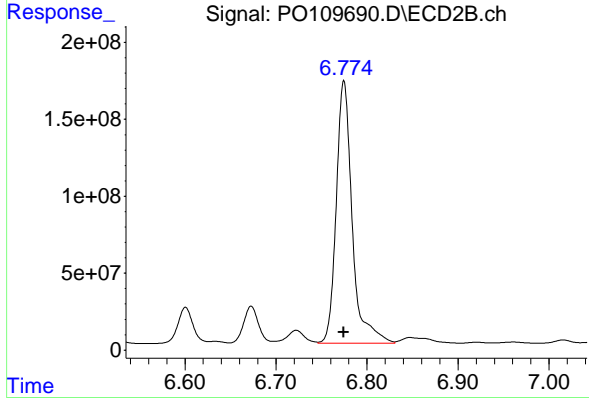
#30 AR-1254-5

R.T.: 6.804 min  
 Delta R.T.: -0.002 min  
 Response: 3877332287  
 Conc: 6214.64 ng/ml

Instrument :  
 ECD\_O  
 ClientSampleId :  
 K084-5C

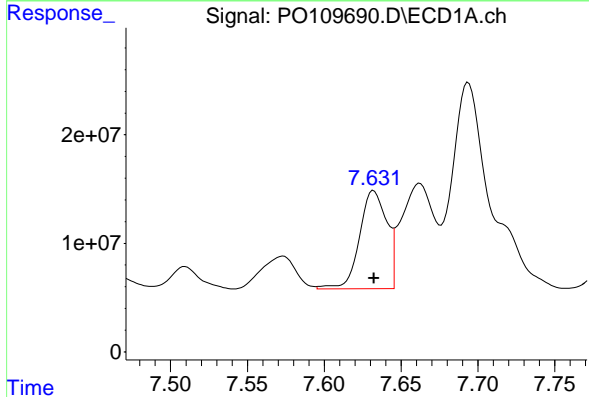
Manual Integrations  
 APPROVED

Reviewed By :Yogesh Patel 03/07/2025  
 Supervised By :mohammad ahmed 03/08/2025



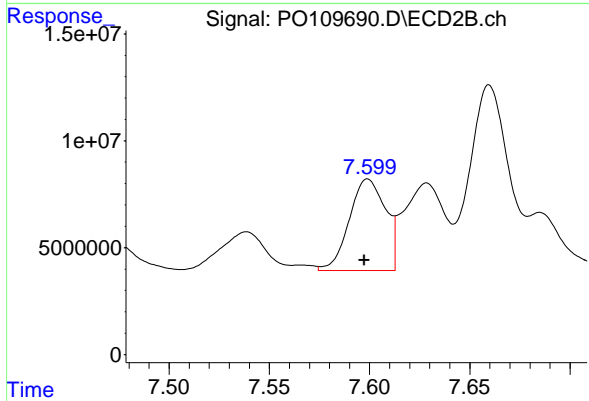
#30 AR-1254-5

R.T.: 6.775 min  
 Delta R.T.: 0.000 min  
 Response: 2080270535  
 Conc: 7010.60 ng/ml



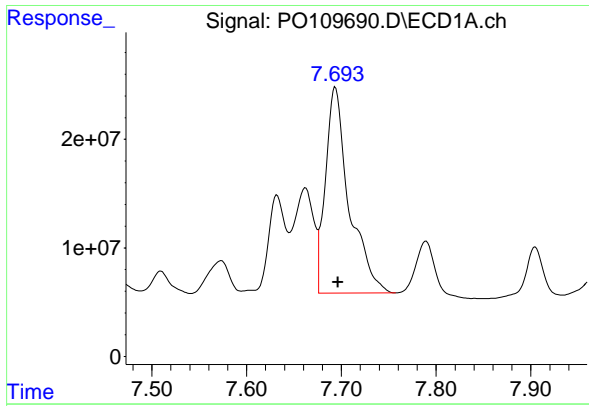
#41 AR-1268-1

R.T.: 7.632 min  
 Delta R.T.: 0.000 min  
 Response: 112297908  
 Conc: 84.80 ng/ml



#41 AR-1268-1

R.T.: 7.599 min  
 Delta R.T.: 0.001 min  
 Response: 55633768  
 Conc: 97.36 ng/ml m



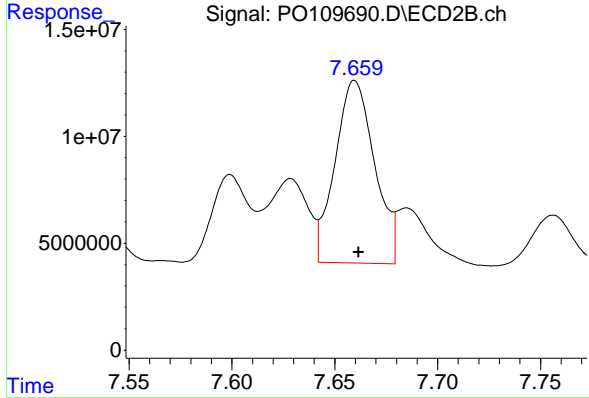
#42 AR-1268-2

R.T.: 7.694 min  
 Delta R.T.: -0.003 min  
 Response: 331686939  
 Conc: 274.32 ng/ml

Instrument :  
 ECD\_O  
 ClientSampleId :  
 K084-5C

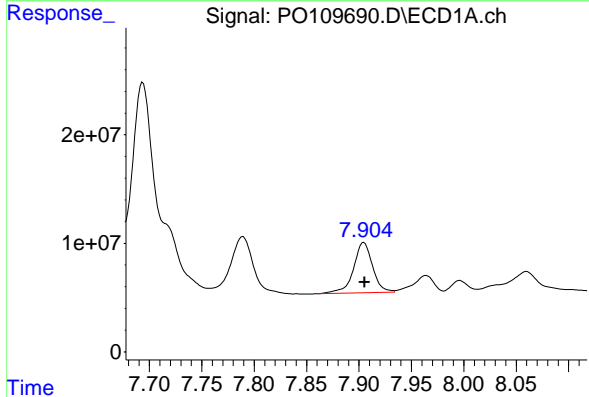
Manual Integrations  
 APPROVED

Reviewed By :Yogesh Patel 03/07/2025  
 Supervised By :mohammad ahmed 03/08/2025



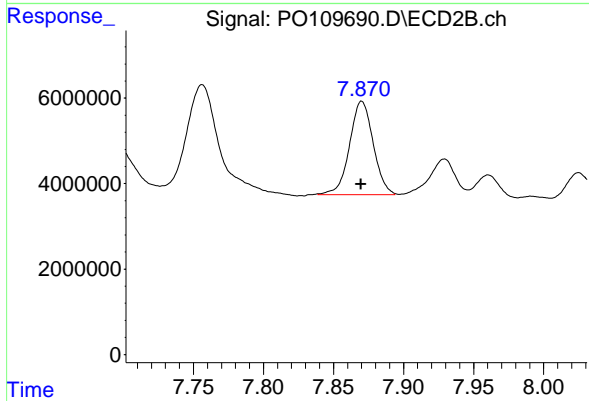
#42 AR-1268-2

R.T.: 7.660 min  
 Delta R.T.: -0.002 min  
 Response: 114348423  
 Conc: 217.83 ng/ml



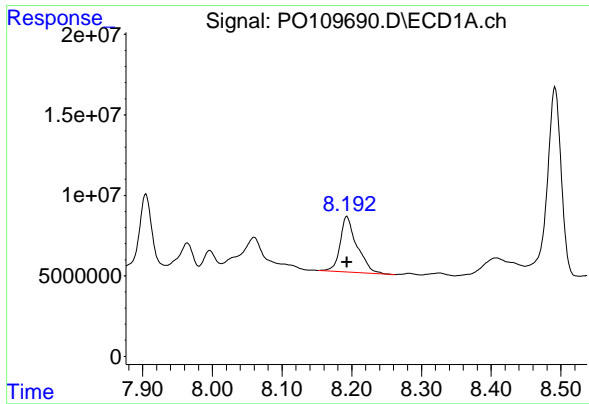
#43 AR-1268-3

R.T.: 7.905 min  
 Delta R.T.: 0.000 min  
 Response: 58669599  
 Conc: 57.62 ng/ml



#43 AR-1268-3

R.T.: 7.870 min  
 Delta R.T.: 0.000 min  
 Response: 25818422  
 Conc: 60.32 ng/ml m



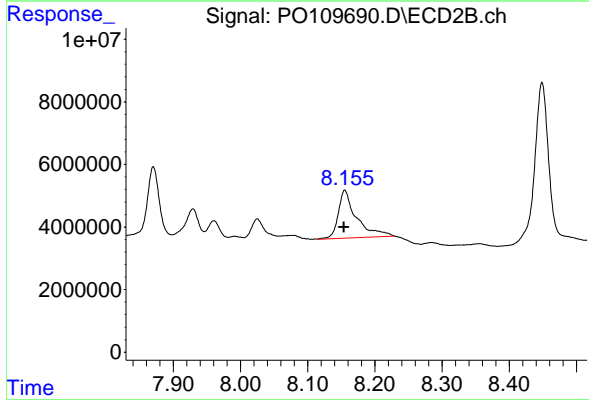
#44 AR-1268-4

R.T.: 8.193 min  
 Delta R.T.: 0.000 min  
 Response: 57350665  
 Conc: 134.99 ng/ml

Instrument :  
 ECD\_O  
 ClientSampleId :  
 K084-5C

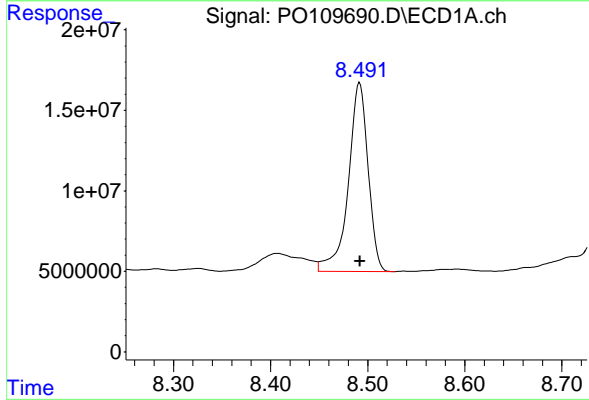
Manual Integrations  
 APPROVED

Reviewed By :Yogesh Patel 03/07/2025  
 Supervised By :mohammad ahmed 03/08/2025



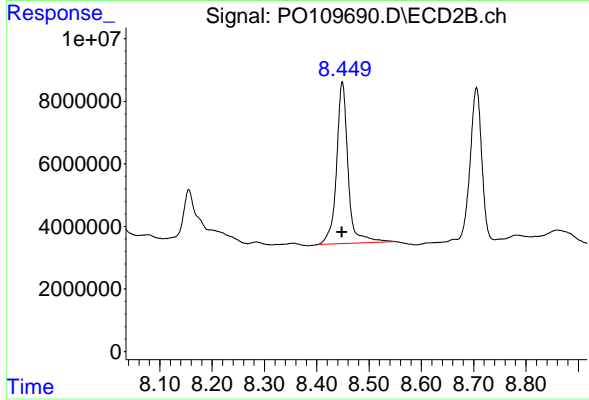
#44 AR-1268-4

R.T.: 8.155 min  
 Delta R.T.: 0.001 min  
 Response: 28773824  
 Conc: 178.35 ng/ml



#45 AR-1268-5

R.T.: 8.492 min  
 Delta R.T.: 0.000 min  
 Response: 166441710  
 Conc: 55.12 ng/ml



#45 AR-1268-5

R.T.: 8.449 min  
 Delta R.T.: 0.000 min  
 Response: 79193615  
 Conc: 72.45 ng/ml