

Data Path : Z:\pestpcbsrv\HPCHEM1\ECD_O\Data\P0030822\
 Data File : P0085142.D
 Signal(s) : Signal #1: ECD1A.CH Signal #2: ECD2B.CH
 Acq On : 08 Mar 2022 23:42
 Operator : YP\AJ
 Sample : AR1248ICC1000
 Misc :
 ALS Vial : 15 Sample Multiplier: 1

Instrument :
 ECD_O
 ClientSampleId :
 AR1248ICC1000

Integration File signal 1: autoint1.e
 Integration File signal 2: autoint2.e
 Quant Time: Mar 09 03:04:40 2022
 Quant Method : Z:\pestpcbsrv\HPCHEM1\ECD_O\methods\P0030822.M
 Quant Title : GC EXTRACTABLES
 QLast Update : Wed Mar 09 03:01:29 2022
 Response via : Initial Calibration
 Integrator: ChemStation 6890 Scale Mode: Small noise peaks clipped

Volume Inj. : 2 µl
 Signal #1 Phase : ZB-MR1 Signal #2 Phase: ZB-MR2
 Signal #1 Info : 30Mx0.32mmx 0.50µ Signal #2 Info : 30M x 0.32mm x 0.25µm

Compound	RT#1	RT#2	Resp#1	Resp#2	ng/ml	ng/ml

System Monitoring Compounds						
1) SA Tetrachlo...	4.499	3.591	15429560	4692352	100.589	99.286
2) SA Decachlor...	10.416	8.610	6310877	3588610	98.471	96.408
Target Compounds						
21) L5 AR-1248-1	5.689	4.680	2599015	943107	987.678	965.142
22) L5 AR-1248-2	5.967	4.918	3229071	1288923	990.366	954.618
23) L5 AR-1248-3	6.175	4.959	3303086	1330785	989.098	957.657
24) L5 AR-1248-4	6.584	5.131	3268264	1578085	994.015	961.724
25) L5 AR-1248-5	6.623	5.524	3110700	1513457	991.944	966.792

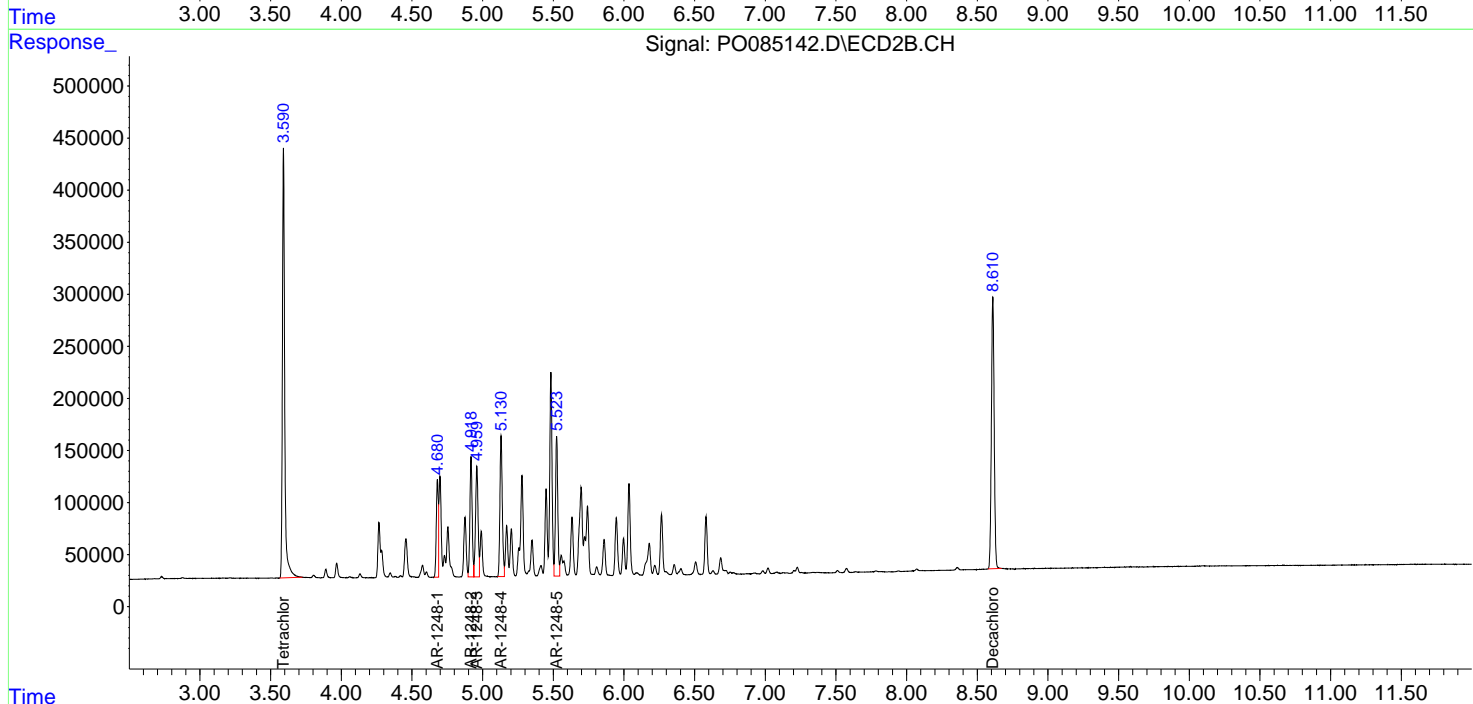
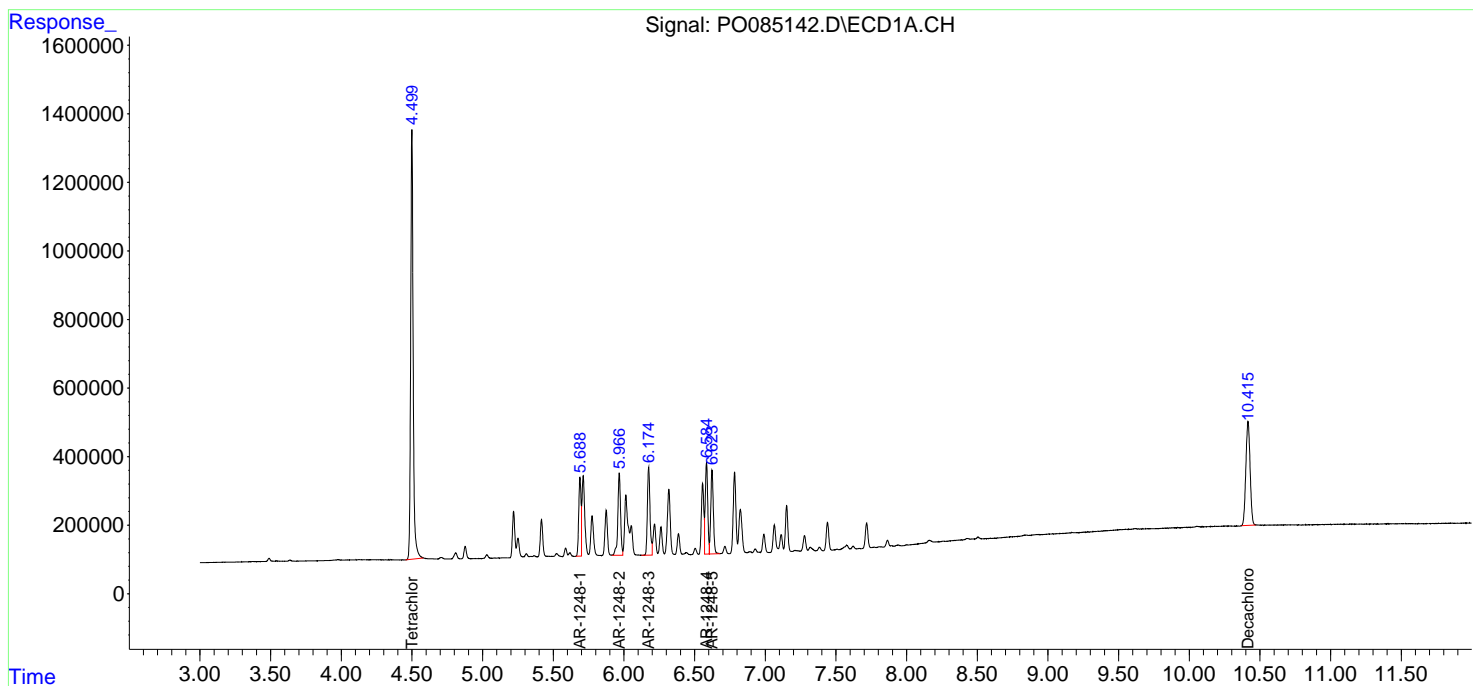
(f)=RT Delta > 1/2 Window (#)=Amounts differ by > 25% (m)=manual int.

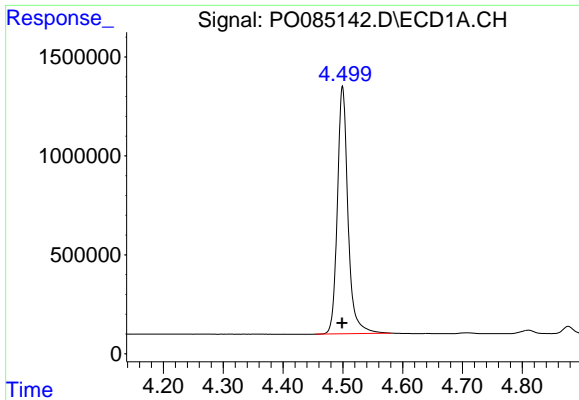
Data Path : Z:\pestpcbsrv\HPCHEM1\ECD_O\Data\P0030822\
 Data File : P0085142.D
 Signal(s) : Signal #1: ECD1A.CH Signal #2: ECD2B.CH
 Acq On : 08 Mar 2022 23:42
 Operator : YP\AJ
 Sample : AR1248ICC1000
 Misc :
 ALS Vial : 15 Sample Multiplier: 1

Instrument :
 ECD_O
 ClientSampleId :
 AR1248ICC1000

Integration File signal 1: autoint1.e
 Integration File signal 2: autoint2.e
 Quant Time: Mar 09 03:04:40 2022
 Quant Method : Z:\pestpcbsrv\HPCHEM1\ECD_O\methods\P0030822.M
 Quant Title : GC EXTRACTABLES
 QLast Update : Wed Mar 09 03:01:29 2022
 Response via : Initial Calibration
 Integrator: ChemStation 6890 Scale Mode: Small noise peaks clipped

Volume Inj. : 2 µl
 Signal #1 Phase : ZB-MR1 Signal #2 Phase: ZB-MR2
 Signal #1 Info : 30Mx0.32mmx 0.50µ Signal #2 Info : 30M x 0.32mm x 0.25µm

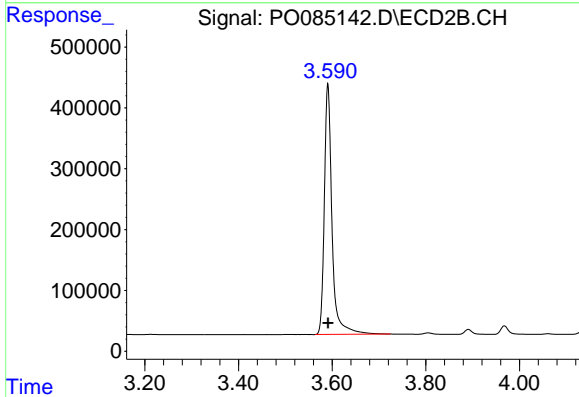




#1 Tetrachloro-m-xylene

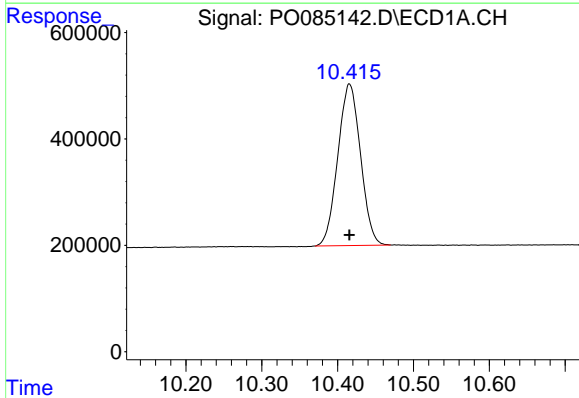
R.T.: 4.499 min
 Delta R.T.: 0.000 min
 Response: 15429560
 Conc: 100.59 ng/ml

Instrument :
 ECD_O
 ClientSampleId :
 AR1248ICC1000



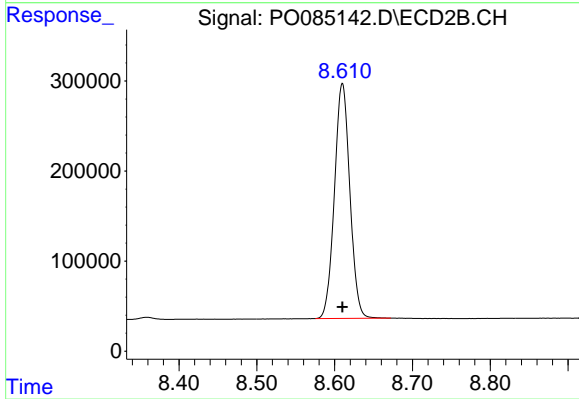
#1 Tetrachloro-m-xylene

R.T.: 3.591 min
 Delta R.T.: 0.000 min
 Response: 4692352
 Conc: 99.29 ng/ml



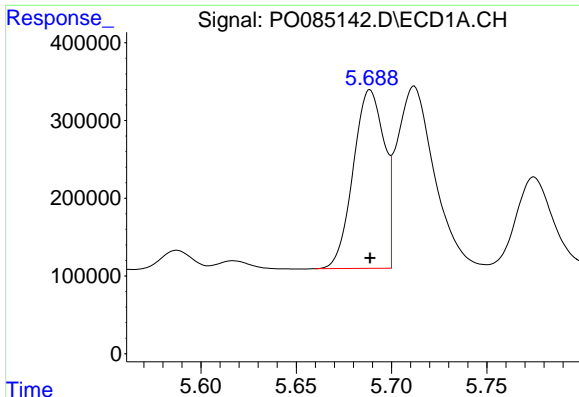
#2 Decachlorobiphenyl

R.T.: 10.416 min
 Delta R.T.: 0.000 min
 Response: 6310877
 Conc: 98.47 ng/ml



#2 Decachlorobiphenyl

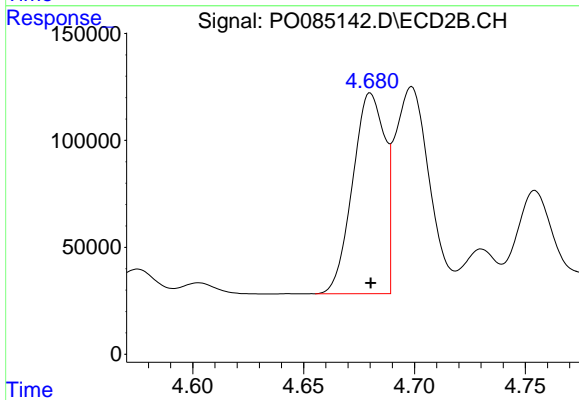
R.T.: 8.610 min
 Delta R.T.: 0.000 min
 Response: 3588610
 Conc: 96.41 ng/ml



#21 AR-1248-1

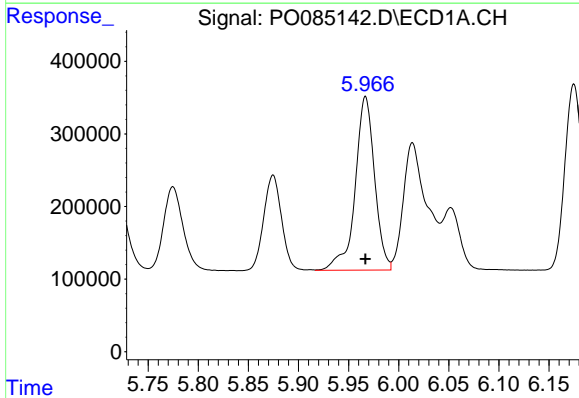
R.T.: 5.689 min
 Delta R.T.: 0.000 min
 Response: 2599015
 Conc: 987.68 ng/ml

Instrument :
 ECD_O
 ClientSampleId :
 AR1248ICC1000



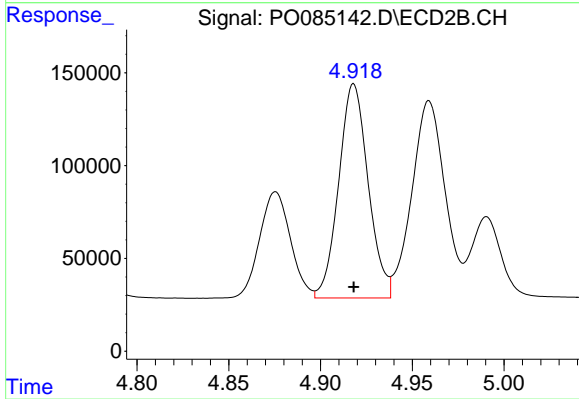
#21 AR-1248-1

R.T.: 4.680 min
 Delta R.T.: 0.000 min
 Response: 943107
 Conc: 965.14 ng/ml



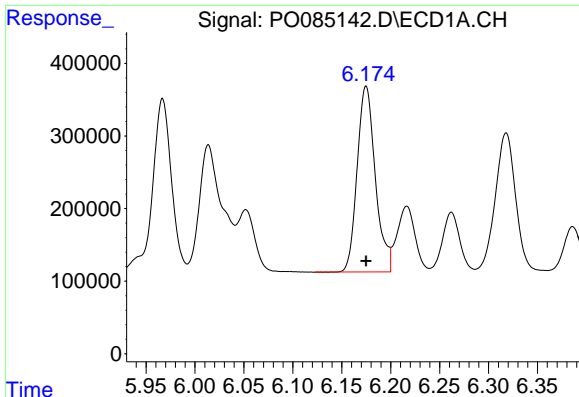
#22 AR-1248-2

R.T.: 5.967 min
 Delta R.T.: 0.000 min
 Response: 3229071
 Conc: 990.37 ng/ml



#22 AR-1248-2

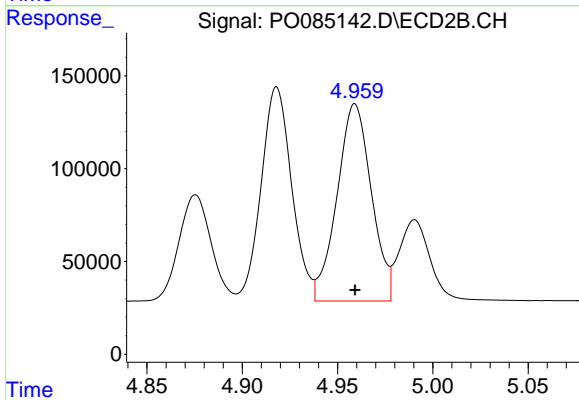
R.T.: 4.918 min
 Delta R.T.: 0.000 min
 Response: 1288923
 Conc: 954.62 ng/ml



#23 AR-1248-3

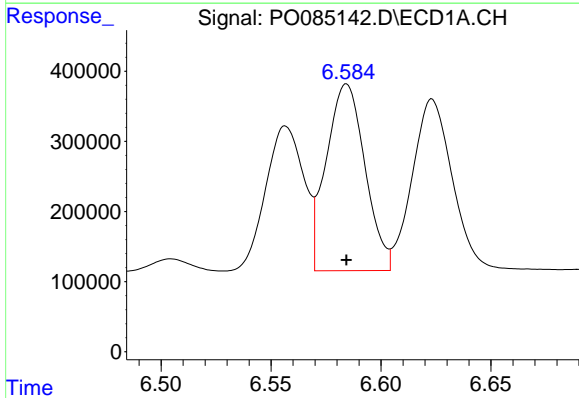
R.T.: 6.175 min
 Delta R.T.: 0.000 min
 Response: 3303086
 Conc: 989.10 ng/ml

Instrument :
 ECD_O
 ClientSampleId :
 AR1248ICC1000



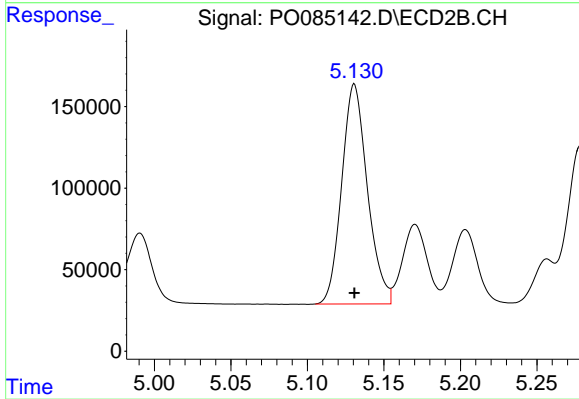
#23 AR-1248-3

R.T.: 4.959 min
 Delta R.T.: 0.000 min
 Response: 1330785
 Conc: 957.66 ng/ml



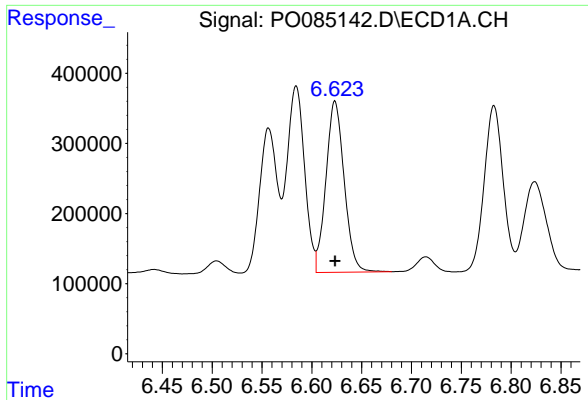
#24 AR-1248-4

R.T.: 6.584 min
 Delta R.T.: 0.000 min
 Response: 3268264
 Conc: 994.01 ng/ml



#24 AR-1248-4

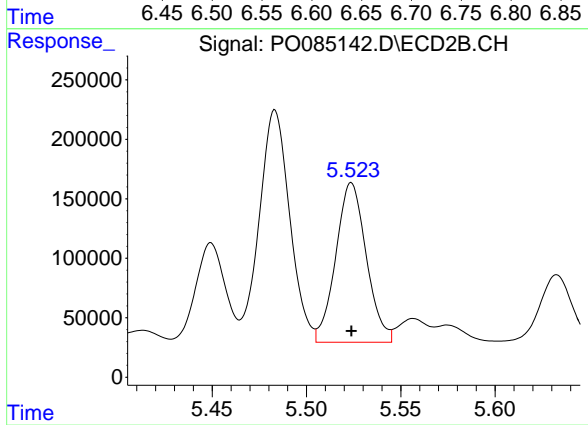
R.T.: 5.131 min
 Delta R.T.: 0.000 min
 Response: 1578085
 Conc: 961.72 ng/ml



#25 AR-1248-5

R.T.: 6.623 min
 Delta R.T.: 0.000 min
 Response: 3110700
 Conc: 991.94 ng/ml

Instrument :
 ECD_O
 ClientSampleId :
 AR1248ICC1000



#25 AR-1248-5

R.T.: 5.524 min
 Delta R.T.: 0.000 min
 Response: 1513457
 Conc: 966.79 ng/ml