

Data Path : Z:\pestpcbsrv\HPCHEM1\ECD_0\Data\P0030922\
 Data File : P0085246.D
 Signal(s) : Signal #1: ECD1A.CH Signal #2: ECD2B.CH
 Acq On : 10 Mar 2022 8:19
 Operator : YP\AJ
 Sample : N1645-09
 Misc : AR1254 MDL 25 PPB
 ALS Vial : 51 Sample Multiplier: 1

Instrument :
 ECD_0
 ClientSampleId :

Integration File signal 1: autoint1.e
 Integration File signal 2: autoint2.e
 Quant Time: Mar 11 00:29:01 2022
 Quant Method : Z:\pestpcbsrv\HPCHEM1\ECD_0\methods\P0030822.M
 Quant Title : GC EXTRACTABLES
 QLast Update : Wed Mar 09 04:29:31 2022
 Response via : Initial Calibration
 Integrator: ChemStation 6890 Scale Mode: Small noise peaks clipped

Volume Inj. : 2 µl
 Signal #1 Phase : ZB-MR1 Signal #2 Phase: ZB-MR2
 Signal #1 Info : 30Mx0.32mmx 0.50µ Signal #2 Info : 30M x 0.32mm x 0.25µm

Compound	RT#1	RT#2	Resp#1	Resp#2	ng/ml	ng/ml
System Monitoring Compounds						
1) SA Tetrachlo...	4.497	3.589	2886047	907188	16.808	19.881
2) SA Decachlor...	10.406	8.607	1269973	833971	19.394	21.905
Target Compounds						
3) L1 AR-1016-1	5.752f	4.692	2063	5018	0.452	2.997 #
4) L1 AR-1016-2	5.752f	4.692	2063	5018	0.306	2.072 #
5) L1 AR-1016-3	5.768	4.915f	1995	32714	0.494	23.897 #
6) L1 AR-1016-4	0.000	4.915	0	32714	N.D.	28.486 #
7) L1 AR-1016-5	6.173	5.128	38453	15626	12.460	10.911
8) L2 AR-1221-1	4.709	3.874f	678589	57570	367.242	104.435 #
9) L2 AR-1221-2	4.808	3.874	54418	57570	40.909	135.407 #
10) L2 AR-1221-3	4.877	0.000	11474	0	2.941	N.D. #
11) L3 AR-1232-1	4.877	0.000	11474	0	4.064	N.D. #
12) L3 AR-1232-2	5.482f	4.692	3792	5018	2.354	4.794 #
13) L3 AR-1232-3	5.752f	4.915f	2063	32714	0.729	57.458 #
14) L3 AR-1232-4	0.000	4.957	0	8684	N.D.	16.444 #
15) L3 AR-1232-5	5.966	5.128	53132	15626	51.649	26.448 #
16) L4 AR-1242-1	5.752f	4.692	2063	5018	0.605	4.008 #
17) L4 AR-1242-2	5.752f	4.692	2063	5018	0.412	2.794 #
18) L4 AR-1242-3	5.768	4.915f	1995	32714	0.657	33.153 #
19) L4 AR-1242-4	0.000	4.957	0	8684	N.D.	8.492 #
20) L4 AR-1242-5	6.624	5.481	24484	74941	12.941	58.363 #
21) L5 AR-1248-1	5.752f	4.692	2063	5018	0.776	4.916 #
22) L5 AR-1248-2	5.966	4.915	53132	32714	16.014	22.580 #
23) L5 AR-1248-3	6.173	4.957	38453	8684	11.221	5.871 #
24) L5 AR-1248-4	6.581	5.128	43039	15626	12.973	8.952 #
25) L5 AR-1248-5	6.624	5.522	24484	7763	7.745	4.743 #
26) L6 AR-1254-1	6.556	5.481	92264	74941	26.984	29.390
27) L6 AR-1254-2	6.777	5.630	138946	67139	27.341	28.746
28) L6 AR-1254-3	7.148	6.033	126292	100070	25.075	27.684
29) L6 AR-1254-4	7.436	6.263	100520	61333	27.483	27.510
30) L6 AR-1254-5	7.862	6.682	109709	85299	28.029	25.389
31) L7 AR-1260-1	7.316	6.165	51690	52529	12.707	20.010 #
32) L7 AR-1260-2	7.575	6.354	57862	41416	12.071	13.245
33) L7 AR-1260-3	7.942	6.505	2350	46478	0.723	15.007 #
34) L7 AR-1260-4	8.183	6.981	5400	4960	1.413	2.251 #
35) L7 AR-1260-5	8.503	7.224	28105	9442	4.083	1.896 #
36) L8 AR-1262-1	7.942	6.682	2350	85299	0.516	49.654 #
37) L8 AR-1262-2	8.503	6.981	28105	4960	3.424	1.722 #
38) L8 AR-1262-3	8.843	7.570f	8692	9351	1.625	4.138 #
39) L8 AR-1262-4	8.928	7.570	2102	9351	0.845	2.273 #
40) L8 AR-1262-5	9.623	8.031f	1430	8281	0.517	4.446 #
41) L9 AR-1268-1	8.843	7.570f	8692	9351	0.927	1.425 #

Data Path : Z:\pestpcbsrv\HPCHEM1\ECD_0\Data\P0030922\
 Data File : P0085246.D
 Signal(s) : Signal #1: ECD1A.CH Signal #2: ECD2B.CH
 Acq On : 10 Mar 2022 8:19
 Operator : YP\AJ
 Sample : N1645-09
 Misc : AR1254 MDL 25 PPB
 ALS Vial : 51 Sample Multiplier: 1

Instrument :
 ECD_0
 ClientSampleId :

Integration File signal 1: autoint1.e
 Integration File signal 2: autoint2.e
 Quant Time: Mar 11 00:29:01 2022
 Quant Method : Z:\pestpcbsrv\HPCHEM1\ECD_0\methods\P0030822.M
 Quant Title : GC EXTRACTABLES
 QLast Update : Wed Mar 09 04:29:31 2022
 Response via : Initial Calibration
 Integrator: ChemStation 6890 Scale Mode: Small noise peaks clipped

Volume Inj. : 2 µl
 Signal #1 Phase : ZB-MR1 Signal #2 Phase: ZB-MR2
 Signal #1 Info : 30Mx0.32mmx 0.50µ Signal #2 Info : 30M x 0.32mm x 0.25µm

	Compound	RT#1	RT#2	Resp#1	Resp#2	ng/ml	ng/ml
42)	L9 AR-1268-2	8.928	7.570	2102	9351	0.248	1.599 #
43)	L9 AR-1268-3	9.171	0.000	5551	0	0.774	N.D. #
44)	L9 AR-1268-4	9.623	8.031f	1430	8281	0.467	3.902 #
45)	L9 AR-1268-5	10.051	8.357	2734	5373	0.115	0.374 #

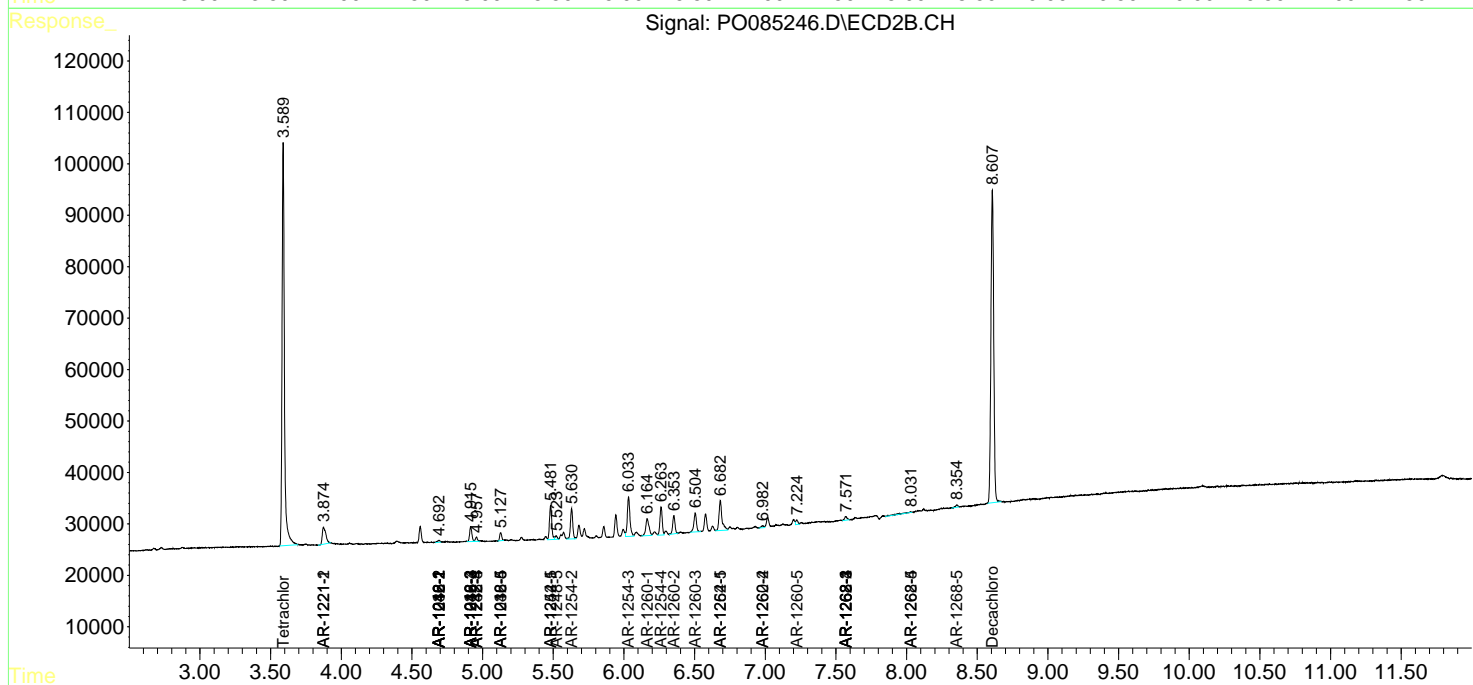
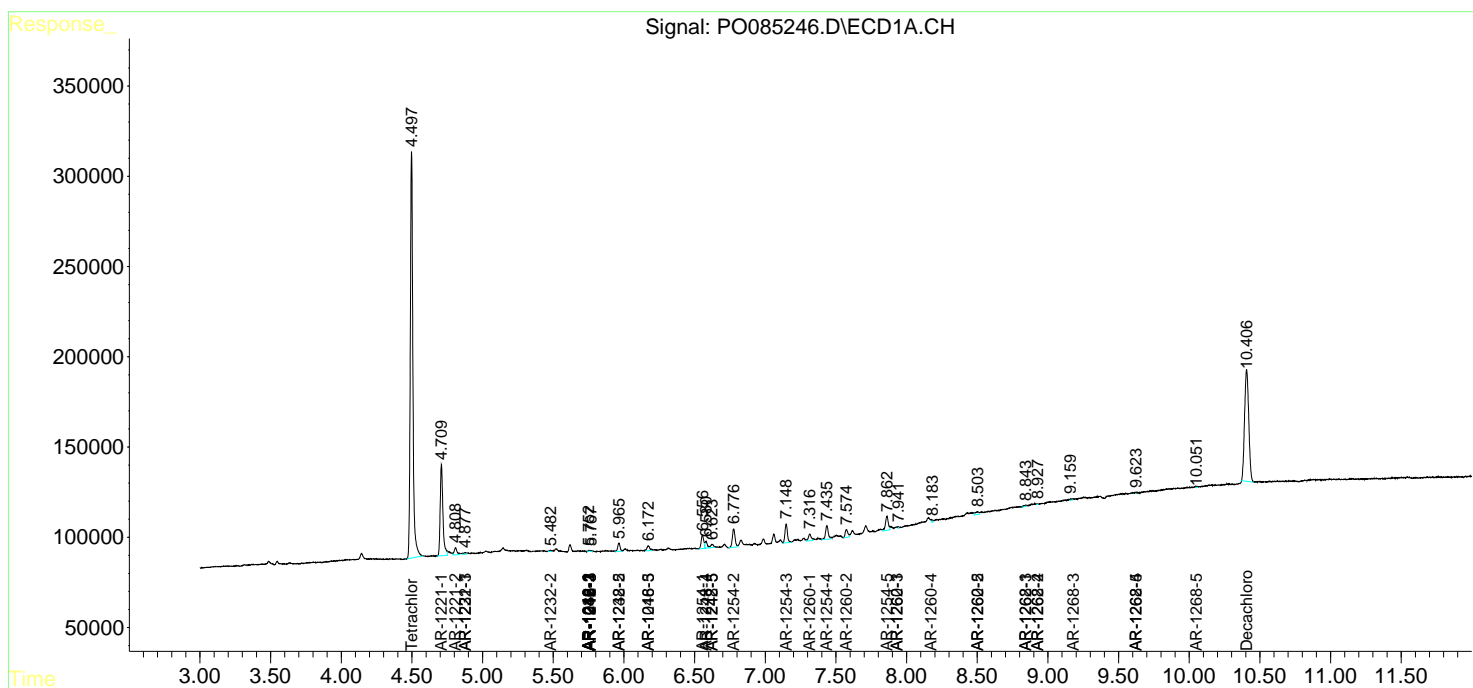
(f)=RT Delta > 1/2 Window (#)=Amounts differ by > 25% (m)=manual int.

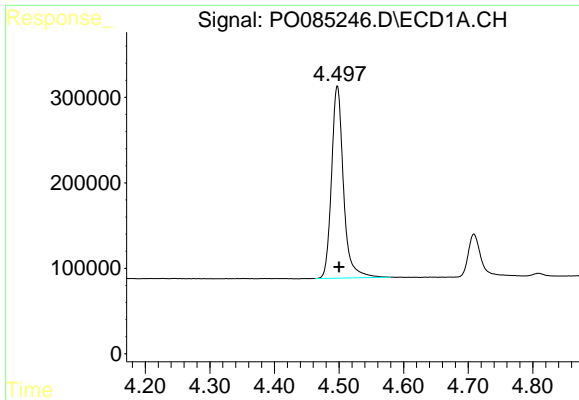
Data Path : Z:\pestpcbsrv\HPCHEM1\ECD_O\Data\P0030922\
 Data File : P0085246.D
 Signal(s) : Signal #1: ECD1A.CH Signal #2: ECD2B.CH
 Acq On : 10 Mar 2022 8:19
 Operator : YP\AJ
 Sample : N1645-09
 Misc : AR1254 MDL 25 PPB
 ALS Vial : 51 Sample Multiplier: 1

Instrument :
 ECD_O
 ClientSampleId :

Integration File signal 1: autoint1.e
 Integration File signal 2: autoint2.e
 Quant Time: Mar 11 00:29:01 2022
 Quant Method : Z:\pestpcbsrv\HPCHEM1\ECD_O\methods\P0030822.M
 Quant Title : GC EXTRACTABLES
 QLast Update : Wed Mar 09 04:29:31 2022
 Response via : Initial Calibration
 Integrator: ChemStation 6890 Scale Mode: Small noise peaks clipped

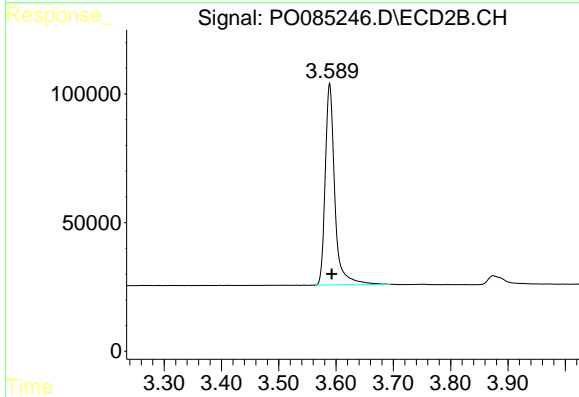
Volume Inj. : 2 µl
 Signal #1 Phase : ZB-MR1 Signal #2 Phase: ZB-MR2
 Signal #1 Info : 30Mx0.32mmx 0.50µ Signal #2 Info : 30M x 0.32mm x 0.25µm



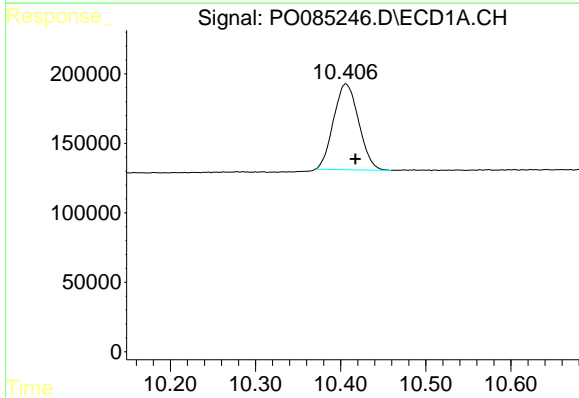


#1 Tetrachloro-m-xylene
 R.T.: 4.497 min
 Delta R.T.: -0.003 min
 Response: 2886047
 Conc: 16.81 ng/ml

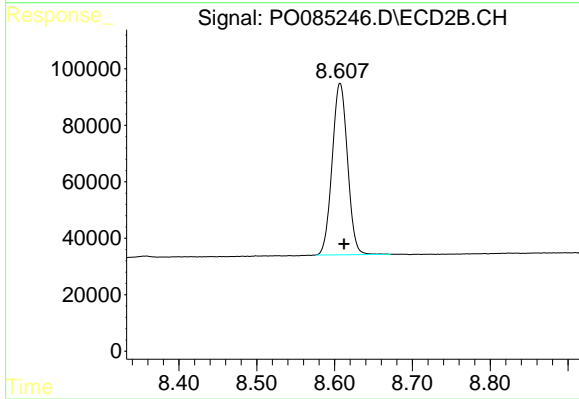
Instrument :
 ECD_O
 ClientSampleId :



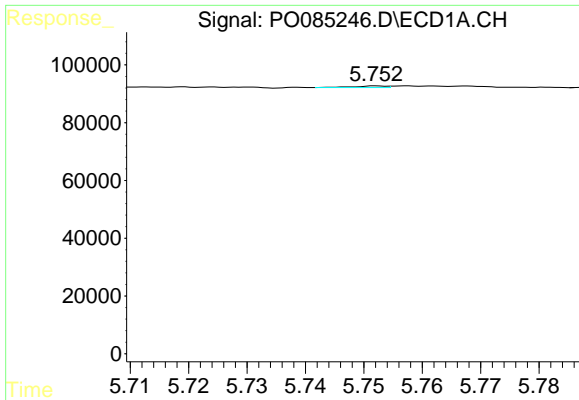
#1 Tetrachloro-m-xylene
 R.T.: 3.589 min
 Delta R.T.: -0.003 min
 Response: 907188
 Conc: 19.88 ng/ml



#2 Decachlorobiphenyl
 R.T.: 10.406 min
 Delta R.T.: -0.011 min
 Response: 1269973
 Conc: 19.39 ng/ml



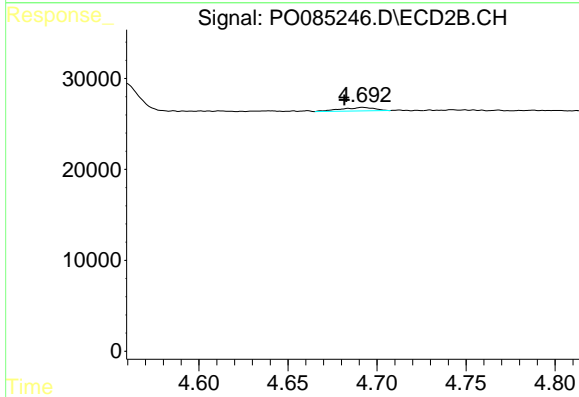
#2 Decachlorobiphenyl
 R.T.: 8.607 min
 Delta R.T.: -0.005 min
 Response: 833971
 Conc: 21.91 ng/ml



#3 AR-1016-1

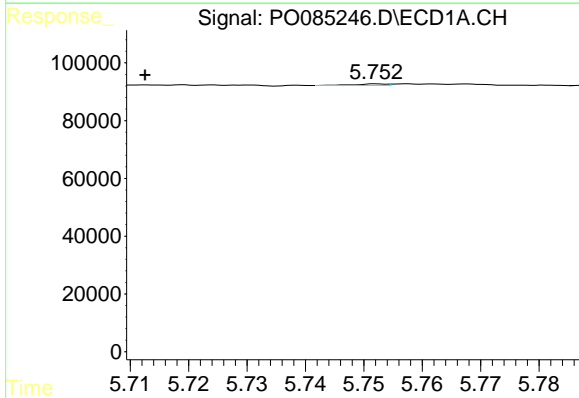
R.T.: 5.752 min
 Delta R.T.: 0.063 min
 Response: 2063
 Conc: 0.45 ng/ml

Instrument :
 ECD_O
 ClientSampleId :



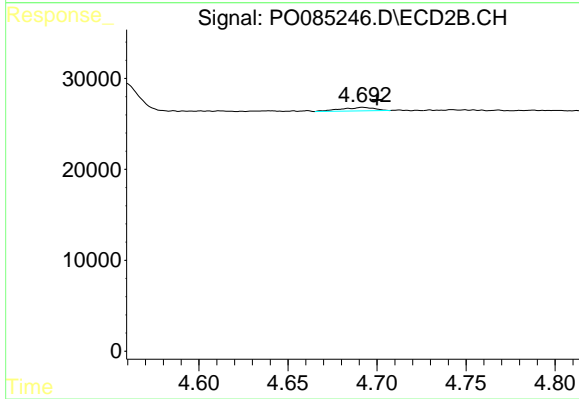
#3 AR-1016-1

R.T.: 4.692 min
 Delta R.T.: 0.010 min
 Response: 5018
 Conc: 3.00 ng/ml



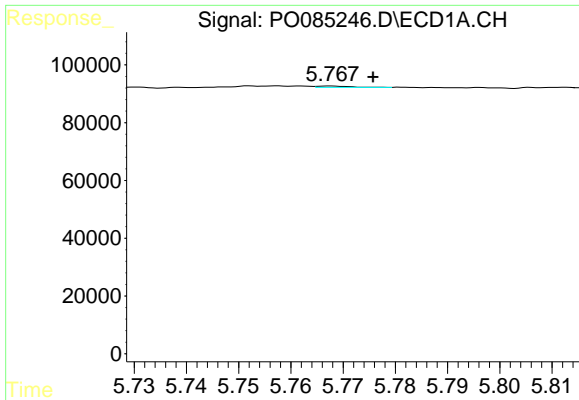
#4 AR-1016-2

R.T.: 5.752 min
 Delta R.T.: 0.040 min
 Response: 2063
 Conc: 0.31 ng/ml



#4 AR-1016-2

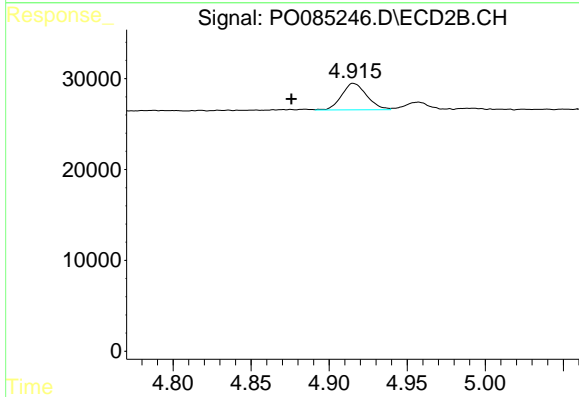
R.T.: 4.692 min
 Delta R.T.: -0.008 min
 Response: 5018
 Conc: 2.07 ng/ml



#5 AR-1016-3

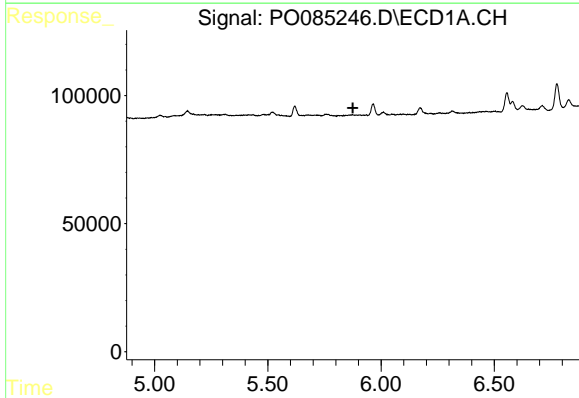
R.T.: 5.768 min
 Delta R.T.: -0.008 min
 Response: 1995
 Conc: 0.49 ng/ml

Instrument :
 ECD_O
 ClientSampleId :



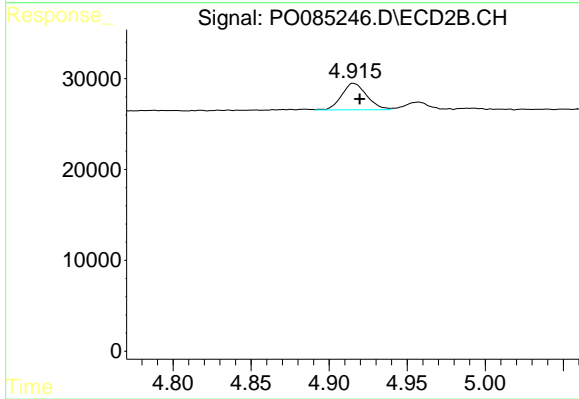
#5 AR-1016-3

R.T.: 4.915 min
 Delta R.T.: 0.040 min
 Response: 32714
 Conc: 23.90 ng/ml



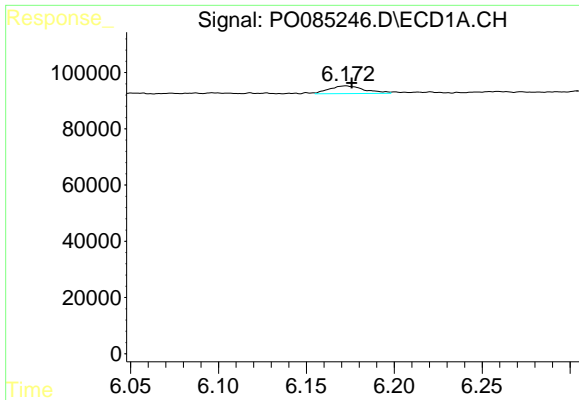
#6 AR-1016-4

R.T.: 0.000 min
 Exp R.T. : 5.876 min
 Response: 0
 Conc: N.D.



#6 AR-1016-4

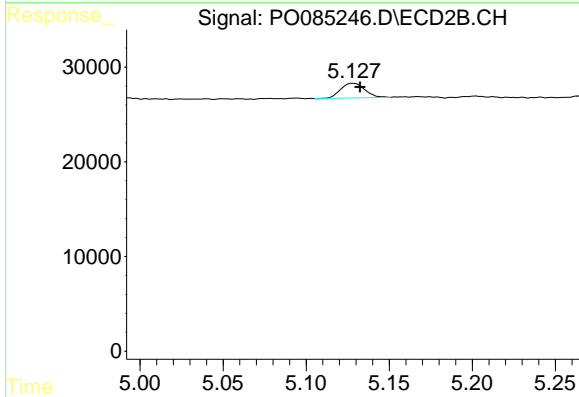
R.T.: 4.915 min
 Delta R.T.: -0.004 min
 Response: 32714
 Conc: 28.49 ng/ml



#7 AR-1016-5

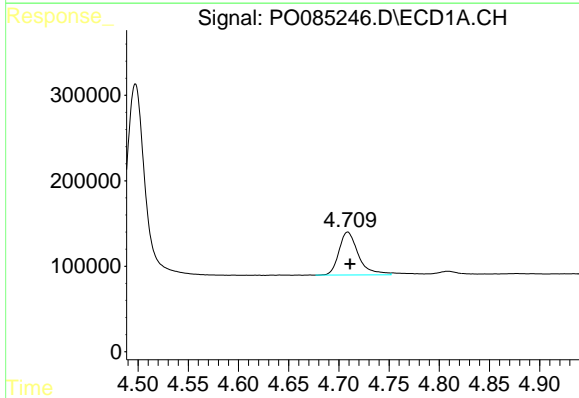
R.T.: 6.173 min
 Delta R.T.: -0.003 min
 Response: 38453
 Conc: 12.46 ng/ml

Instrument :
 ECD_O
 ClientSampleId :



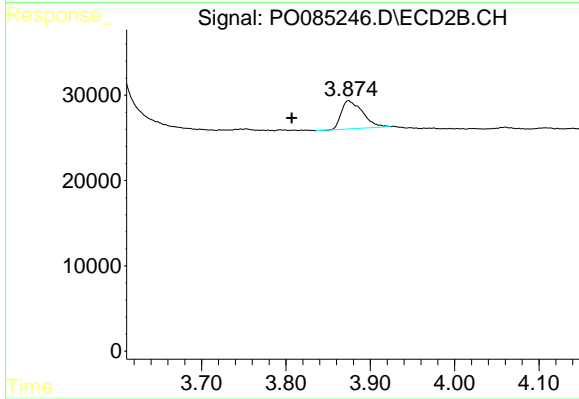
#7 AR-1016-5

R.T.: 5.128 min
 Delta R.T.: -0.004 min
 Response: 15626
 Conc: 10.91 ng/ml



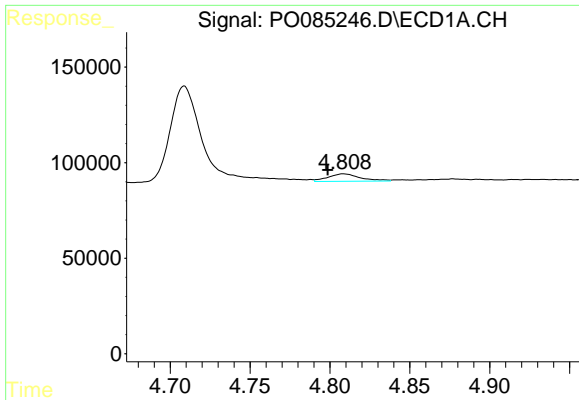
#8 AR-1221-1

R.T.: 4.709 min
 Delta R.T.: -0.002 min
 Response: 678589
 Conc: 367.24 ng/ml



#8 AR-1221-1

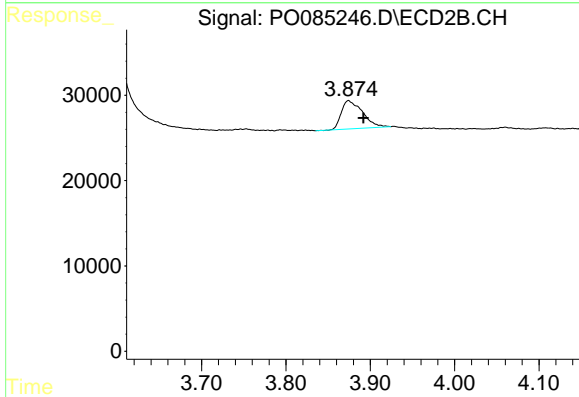
R.T.: 3.874 min
 Delta R.T.: 0.068 min
 Response: 57570
 Conc: 104.43 ng/ml



#9 AR-1221-2

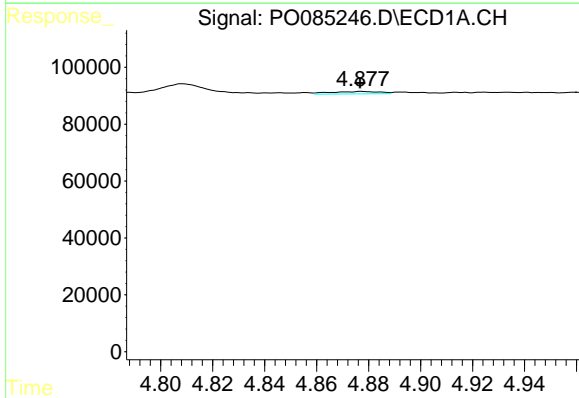
R.T.: 4.808 min
 Delta R.T.: 0.010 min
 Response: 54418
 Conc: 40.91 ng/ml

Instrument :
 ECD_O
 ClientSampleId :



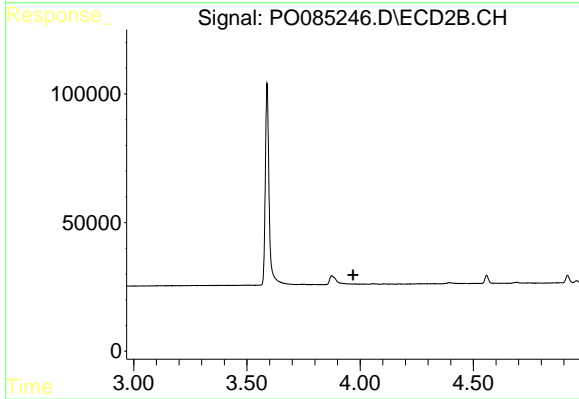
#9 AR-1221-2

R.T.: 3.874 min
 Delta R.T.: -0.018 min
 Response: 57570
 Conc: 135.41 ng/ml



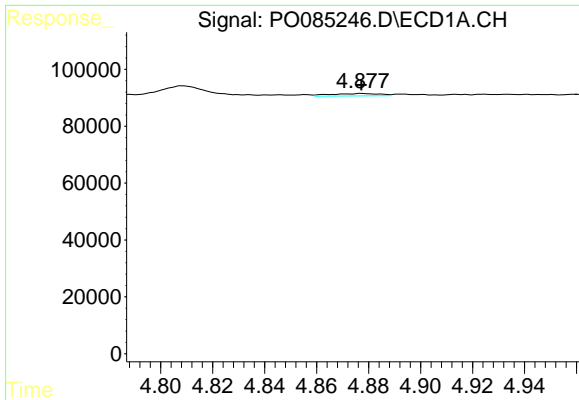
#10 AR-1221-3

R.T.: 4.877 min
 Delta R.T.: 0.000 min
 Response: 11474
 Conc: 2.94 ng/ml



#10 AR-1221-3

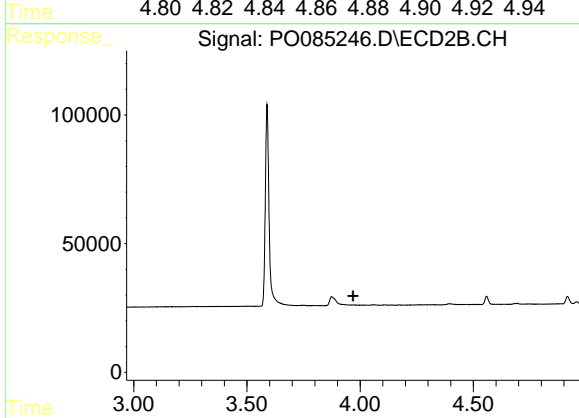
R.T.: 0.000 min
 Exp R.T. : 3.968 min
 Response: 0
 Conc: N.D.



#11 AR-1232-1

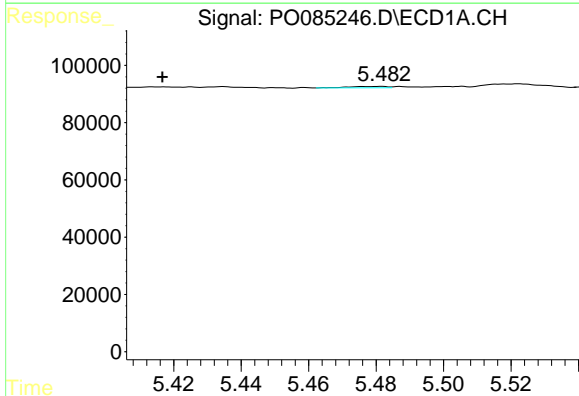
R.T.: 4.877 min
 Delta R.T.: 0.000 min
 Response: 11474
 Conc: 4.06 ng/ml

Instrument :
 ECD_O
 ClientSampleId :



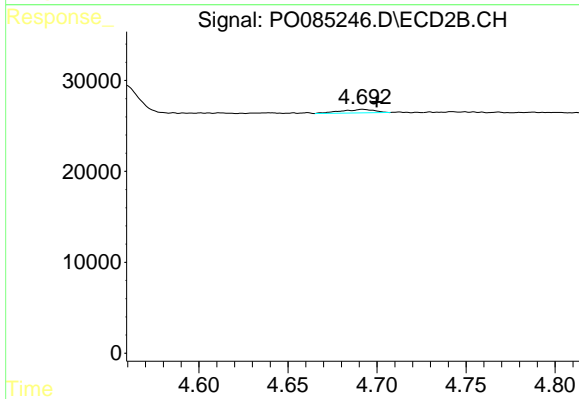
#11 AR-1232-1

R.T.: 0.000 min
 Exp R.T. : 3.969 min
 Response: 0
 Conc: N.D.



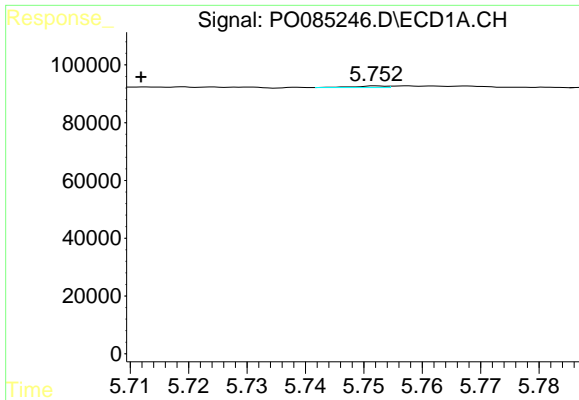
#12 AR-1232-2

R.T.: 5.482 min
 Delta R.T.: 0.065 min
 Response: 3792
 Conc: 2.35 ng/ml



#12 AR-1232-2

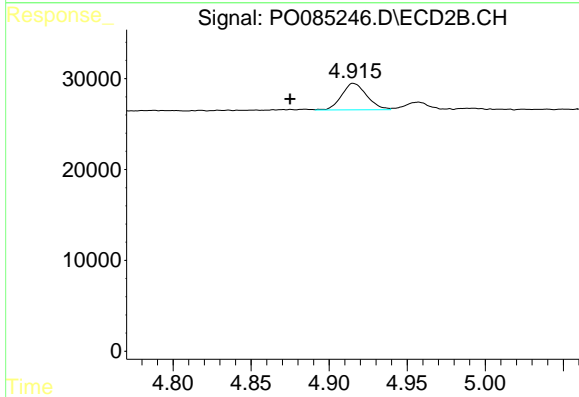
R.T.: 4.692 min
 Delta R.T.: -0.008 min
 Response: 5018
 Conc: 4.79 ng/ml



#13 AR-1232-3

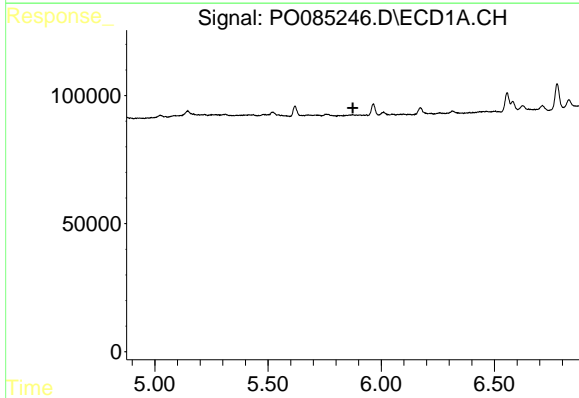
R.T.: 5.752 min
 Delta R.T.: 0.040 min
 Response: 2063
 Conc: 0.73 ng/ml

Instrument :
 ECD_O
 ClientSampleId :



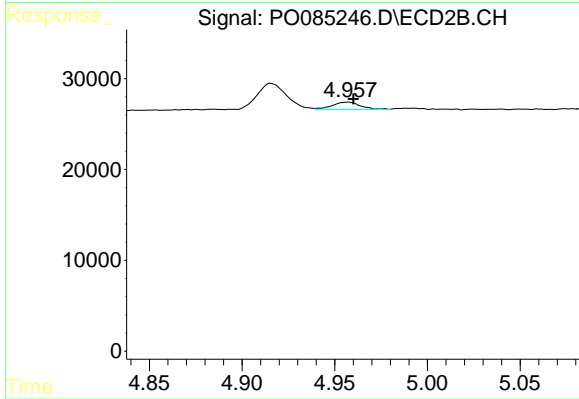
#13 AR-1232-3

R.T.: 4.915 min
 Delta R.T.: 0.041 min
 Response: 32714
 Conc: 57.46 ng/ml



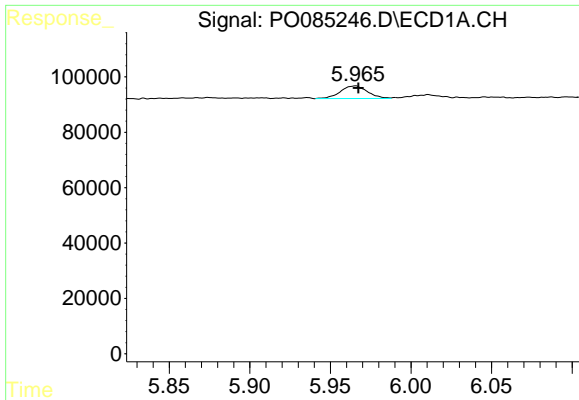
#14 AR-1232-4

R.T.: 0.000 min
 Exp R.T. : 5.875 min
 Response: 0
 Conc: N.D.



#14 AR-1232-4

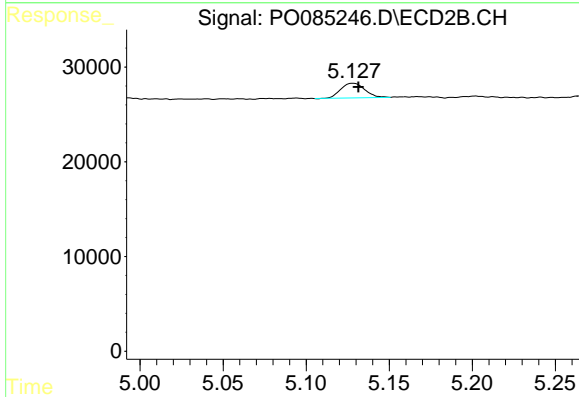
R.T.: 4.957 min
 Delta R.T.: -0.003 min
 Response: 8684
 Conc: 16.44 ng/ml



#15 AR-1232-5

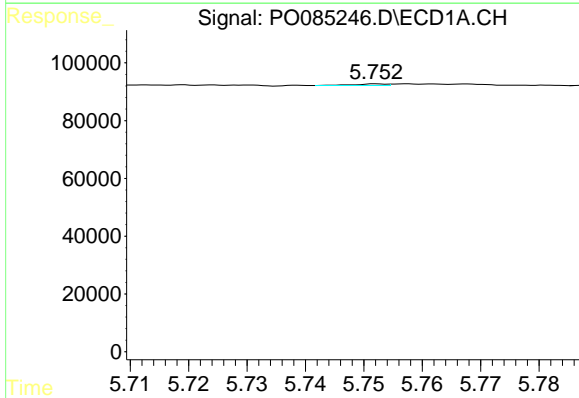
R.T.: 5.966 min
 Delta R.T.: -0.002 min
 Response: 53132
 Conc: 51.65 ng/ml

Instrument :
 ECD_O
 ClientSampleId :



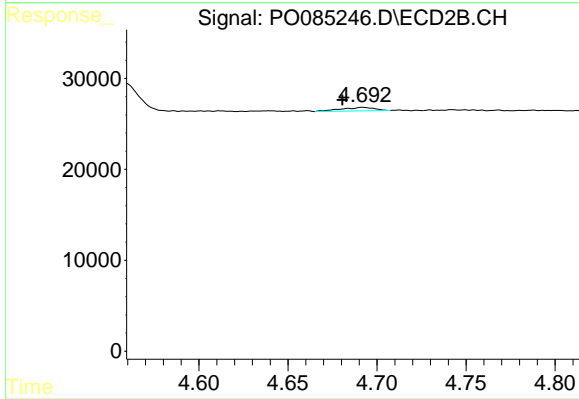
#15 AR-1232-5

R.T.: 5.128 min
 Delta R.T.: -0.003 min
 Response: 15626
 Conc: 26.45 ng/ml



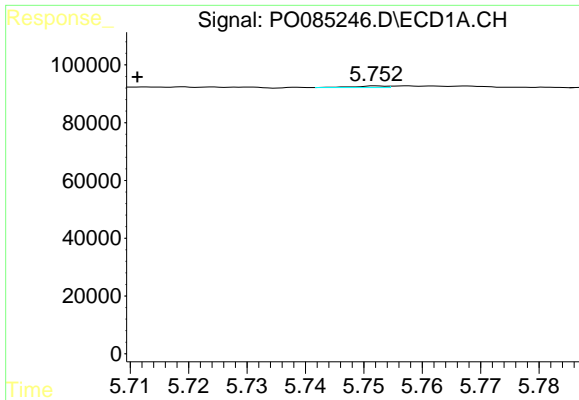
#16 AR-1242-1

R.T.: 5.752 min
 Delta R.T.: 0.064 min
 Response: 2063
 Conc: 0.61 ng/ml



#16 AR-1242-1

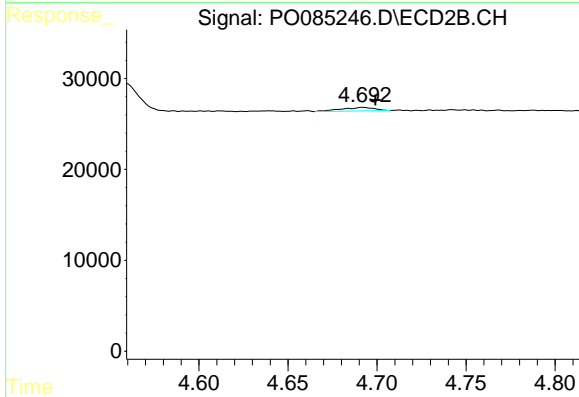
R.T.: 4.692 min
 Delta R.T.: 0.011 min
 Response: 5018
 Conc: 4.01 ng/ml



#17 AR-1242-2

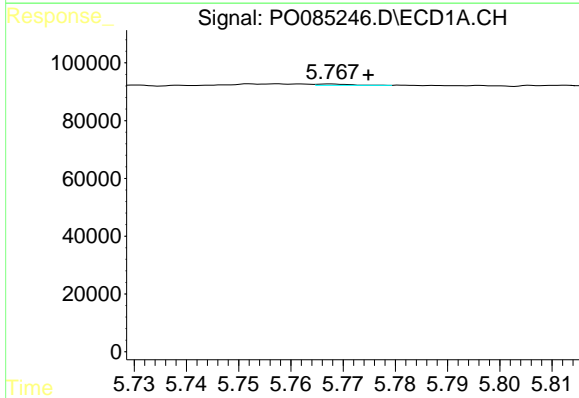
R.T.: 5.752 min
 Delta R.T.: 0.041 min
 Response: 2063
 Conc: 0.41 ng/ml

Instrument :
 ECD_O
 ClientSampleId :



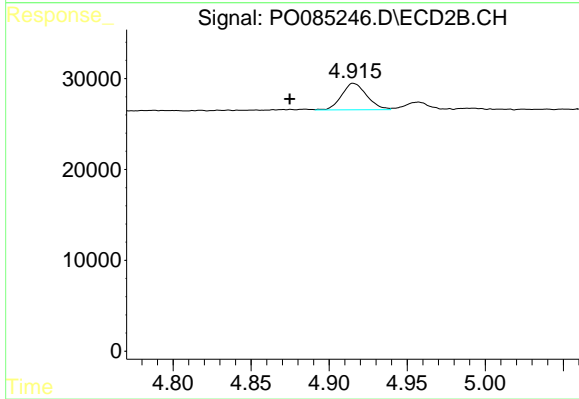
#17 AR-1242-2

R.T.: 4.692 min
 Delta R.T.: -0.007 min
 Response: 5018
 Conc: 2.79 ng/ml



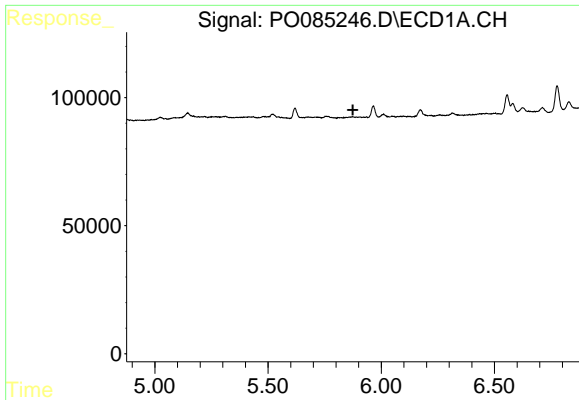
#18 AR-1242-3

R.T.: 5.768 min
 Delta R.T.: -0.007 min
 Response: 1995
 Conc: 0.66 ng/ml



#18 AR-1242-3

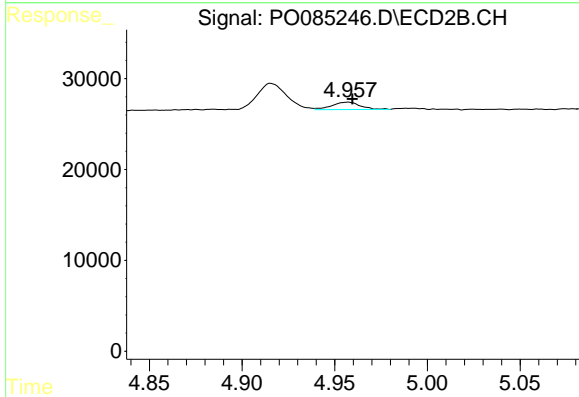
R.T.: 4.915 min
 Delta R.T.: 0.041 min
 Response: 32714
 Conc: 33.15 ng/ml



#19 AR-1242-4

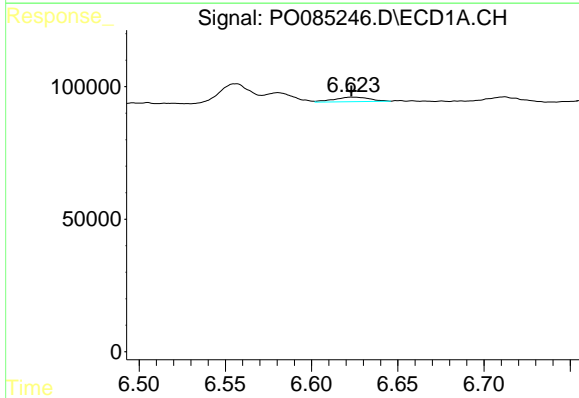
R.T.: 0.000 min
 Exp R.T.: 5.874 min
 Response: 0
 Conc: N.D.

Instrument :
 ECD_O
 ClientSampleId :



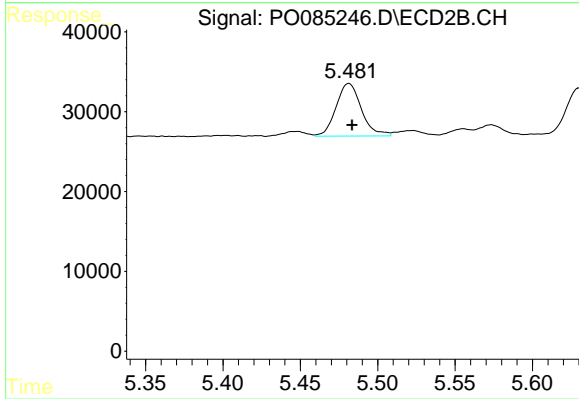
#19 AR-1242-4

R.T.: 4.957 min
 Delta R.T.: -0.003 min
 Response: 8684
 Conc: 8.49 ng/ml



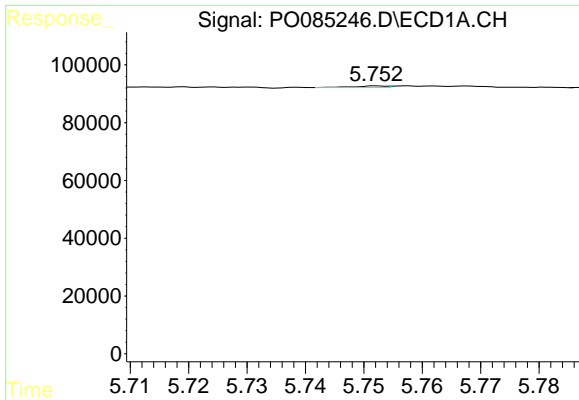
#20 AR-1242-5

R.T.: 6.624 min
 Delta R.T.: 0.000 min
 Response: 24484
 Conc: 12.94 ng/ml



#20 AR-1242-5

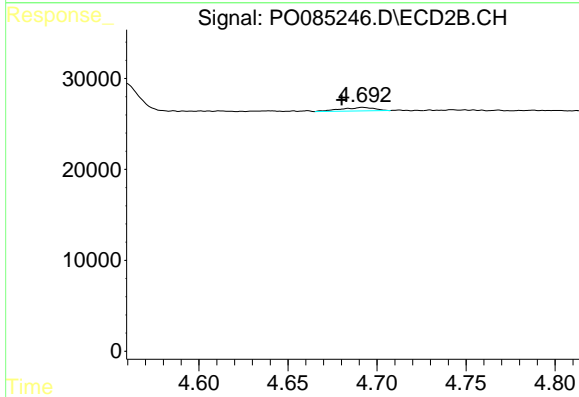
R.T.: 5.481 min
 Delta R.T.: -0.002 min
 Response: 74941
 Conc: 58.36 ng/ml



#21 AR-1248-1

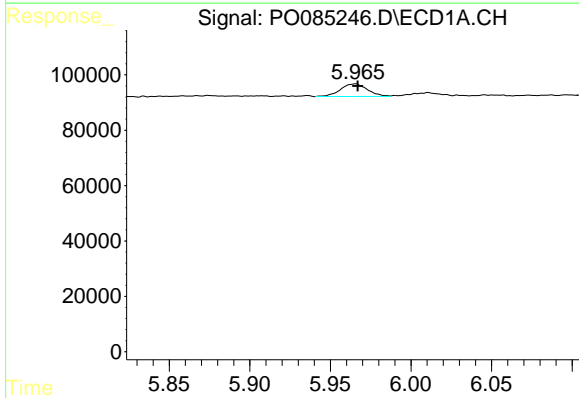
R.T.: 5.752 min
 Delta R.T.: 0.064 min
 Response: 2063
 Conc: 0.78 ng/ml

Instrument :
 ECD_O
 ClientSampleId :



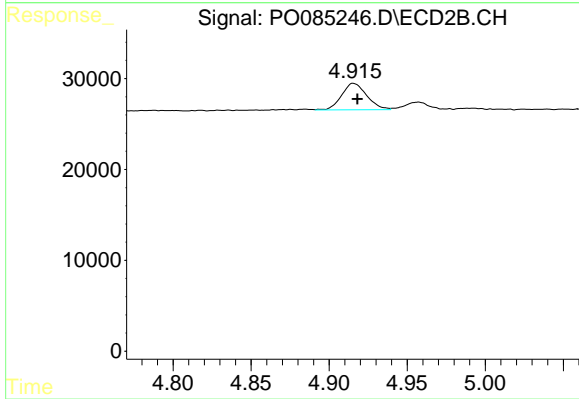
#21 AR-1248-1

R.T.: 4.692 min
 Delta R.T.: 0.012 min
 Response: 5018
 Conc: 4.92 ng/ml



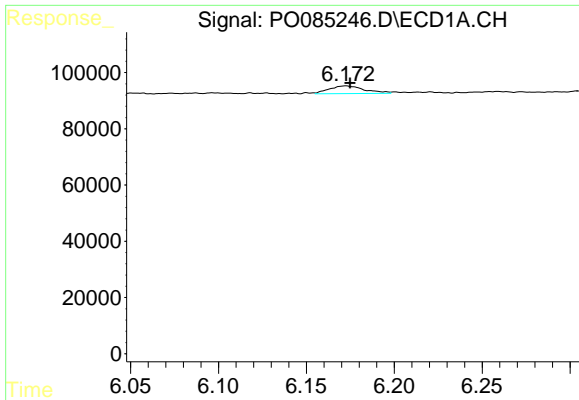
#22 AR-1248-2

R.T.: 5.966 min
 Delta R.T.: -0.001 min
 Response: 53132
 Conc: 16.01 ng/ml



#22 AR-1248-2

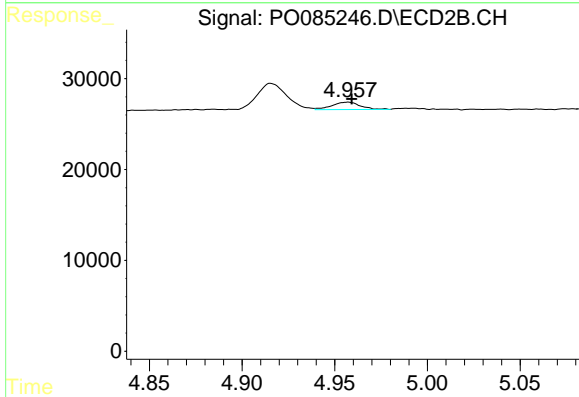
R.T.: 4.915 min
 Delta R.T.: -0.003 min
 Response: 32714
 Conc: 22.58 ng/ml



#23 AR-1248-3

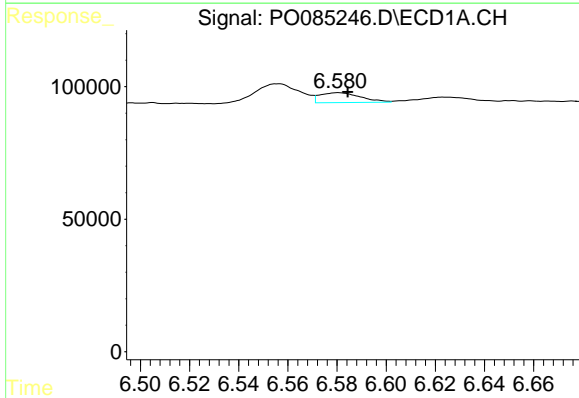
R.T.: 6.173 min
 Delta R.T.: -0.002 min
 Response: 38453
 Conc: 11.22 ng/ml

Instrument :
 ECD_O
 ClientSampleId :



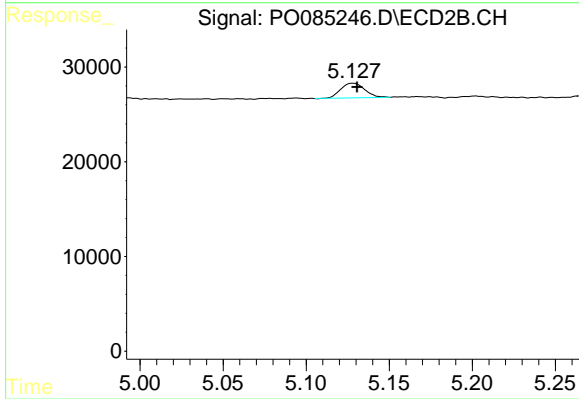
#23 AR-1248-3

R.T.: 4.957 min
 Delta R.T.: -0.002 min
 Response: 8684
 Conc: 5.87 ng/ml



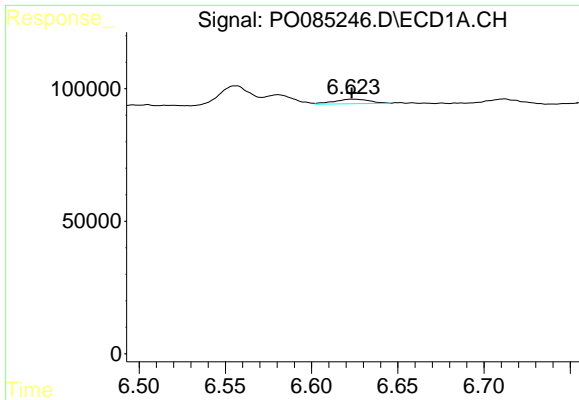
#24 AR-1248-4

R.T.: 6.581 min
 Delta R.T.: -0.004 min
 Response: 43039
 Conc: 12.97 ng/ml



#24 AR-1248-4

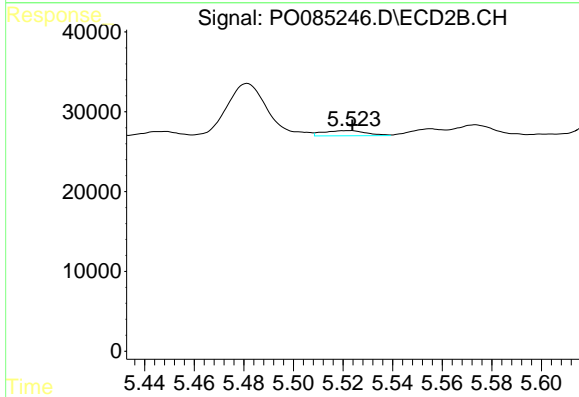
R.T.: 5.128 min
 Delta R.T.: -0.003 min
 Response: 15626
 Conc: 8.95 ng/ml



#25 AR-1248-5

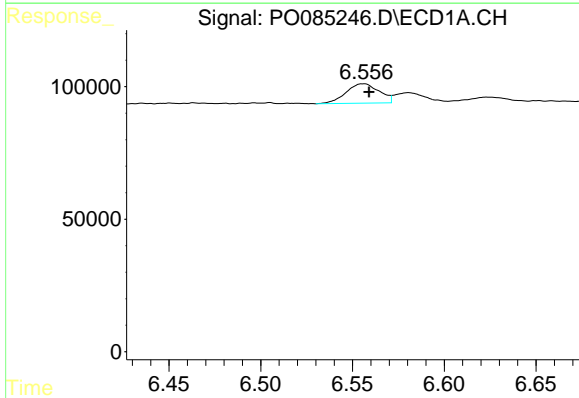
R.T.: 6.624 min
 Delta R.T.: 0.000 min
 Response: 24484
 Conc: 7.75 ng/ml

Instrument :
 ECD_O
 ClientSampleId :



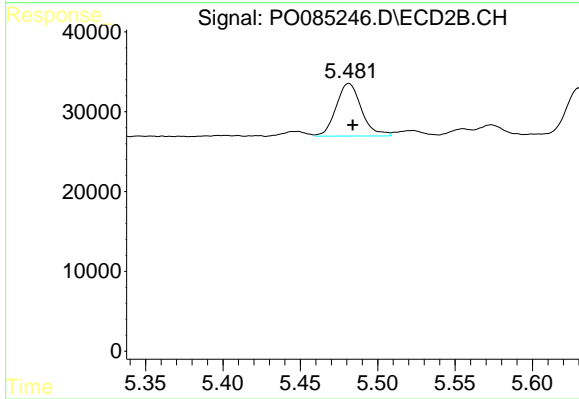
#25 AR-1248-5

R.T.: 5.522 min
 Delta R.T.: -0.002 min
 Response: 7763
 Conc: 4.74 ng/ml



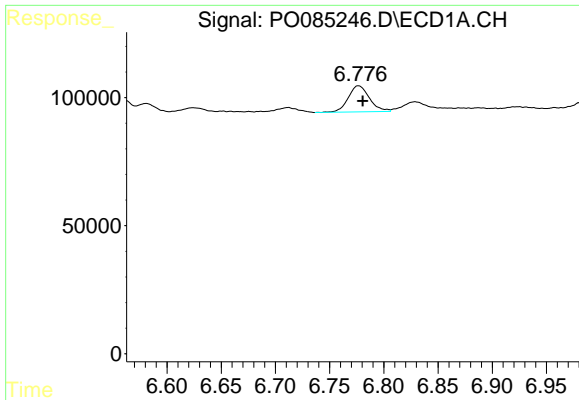
#26 AR-1254-1

R.T.: 6.556 min
 Delta R.T.: -0.003 min
 Response: 92264
 Conc: 26.98 ng/ml



#26 AR-1254-1

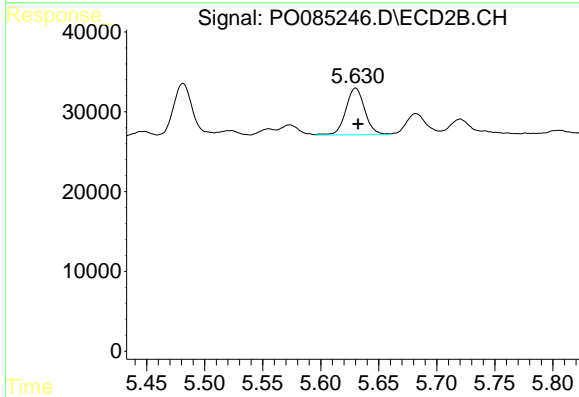
R.T.: 5.481 min
 Delta R.T.: -0.002 min
 Response: 74941
 Conc: 29.39 ng/ml



#27 AR-1254-2

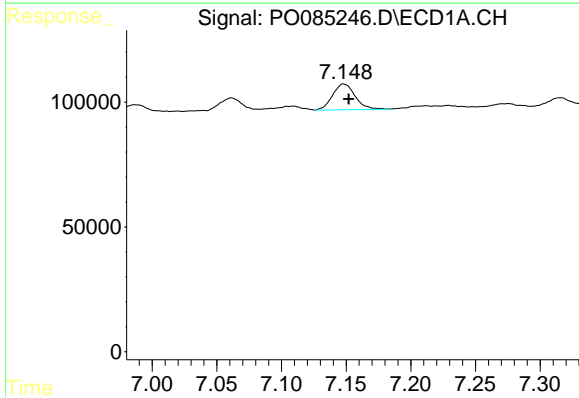
R.T.: 6.777 min
 Delta R.T.: -0.004 min
 Response: 138946
 Conc: 27.34 ng/ml

Instrument :
 ECD_O
 ClientSampleId :



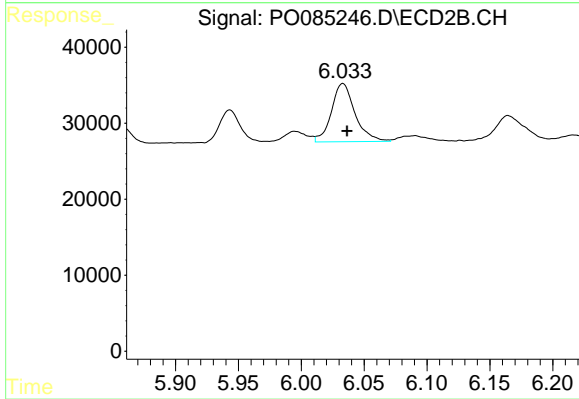
#27 AR-1254-2

R.T.: 5.630 min
 Delta R.T.: -0.002 min
 Response: 67139
 Conc: 28.75 ng/ml



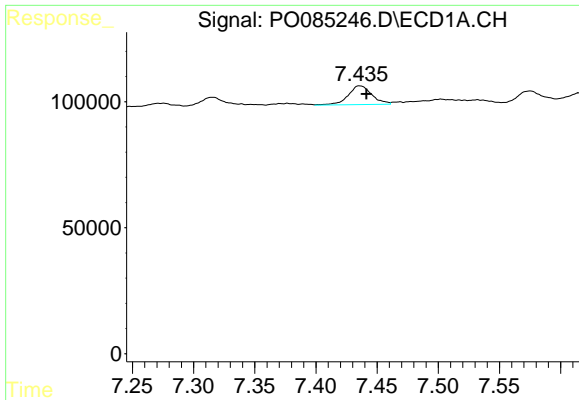
#28 AR-1254-3

R.T.: 7.148 min
 Delta R.T.: -0.004 min
 Response: 126292
 Conc: 25.08 ng/ml



#28 AR-1254-3

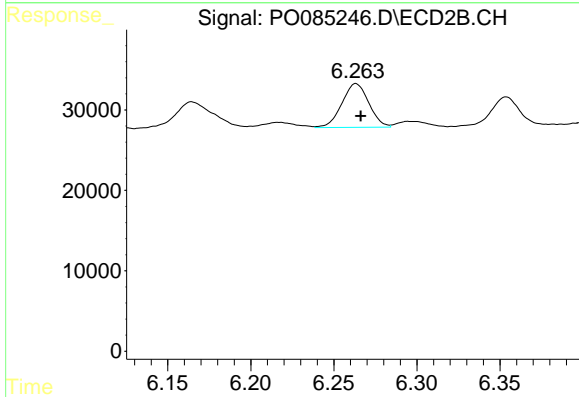
R.T.: 6.033 min
 Delta R.T.: -0.003 min
 Response: 100070
 Conc: 27.68 ng/ml



#29 AR-1254-4

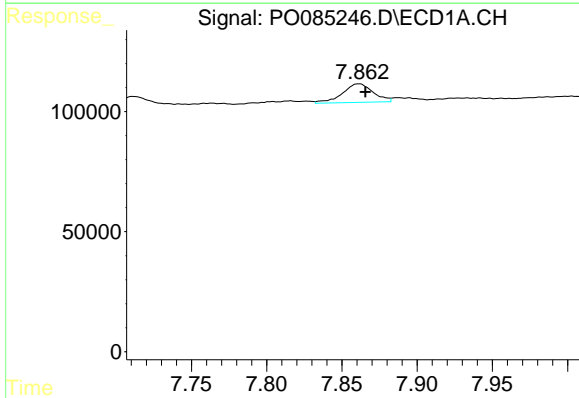
R.T.: 7.436 min
 Delta R.T.: -0.006 min
 Response: 100520
 Conc: 27.48 ng/ml

Instrument :
 ECD_O
 ClientSampleId :



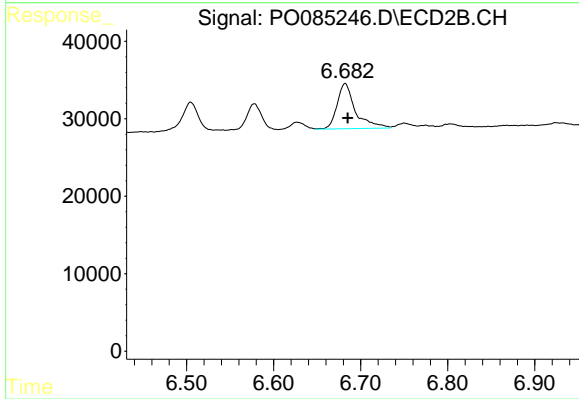
#29 AR-1254-4

R.T.: 6.263 min
 Delta R.T.: -0.003 min
 Response: 61333
 Conc: 27.51 ng/ml



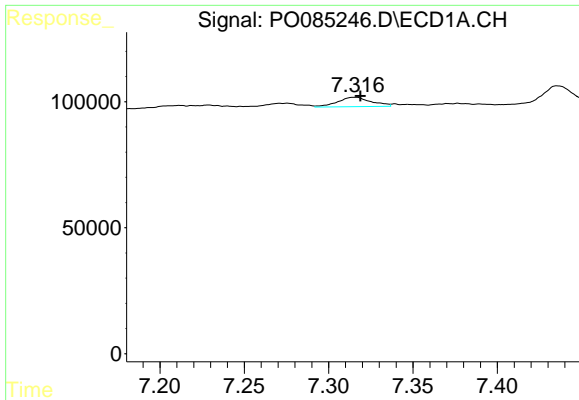
#30 AR-1254-5

R.T.: 7.862 min
 Delta R.T.: -0.004 min
 Response: 109709
 Conc: 28.03 ng/ml



#30 AR-1254-5

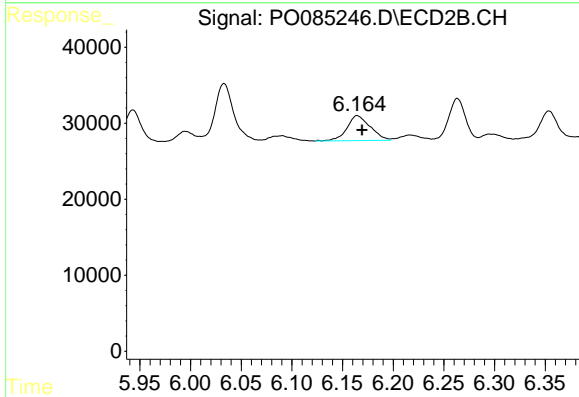
R.T.: 6.682 min
 Delta R.T.: -0.003 min
 Response: 85299
 Conc: 25.39 ng/ml



#31 AR-1260-1

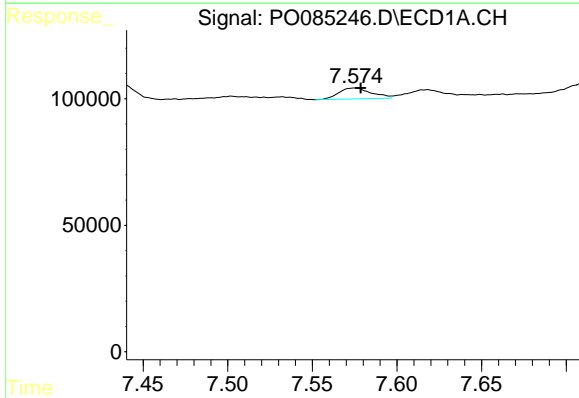
R.T.: 7.316 min
 Delta R.T.: -0.003 min
 Response: 51690
 Conc: 12.71 ng/ml

Instrument :
 ECD_O
 ClientSampleId :



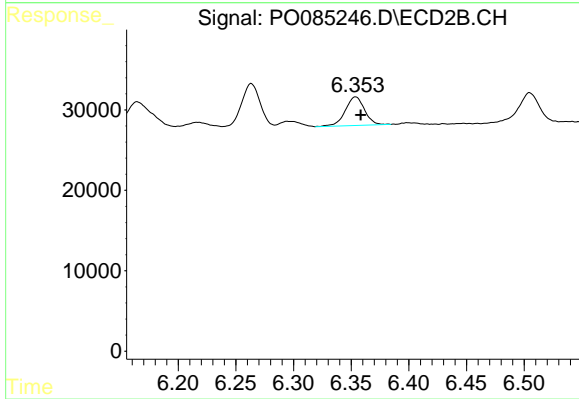
#31 AR-1260-1

R.T.: 6.165 min
 Delta R.T.: -0.005 min
 Response: 52529
 Conc: 20.01 ng/ml



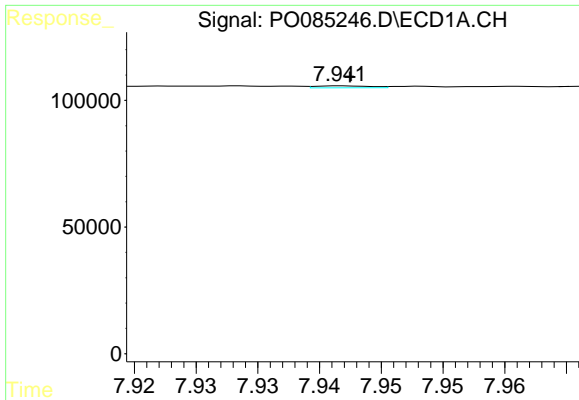
#32 AR-1260-2

R.T.: 7.575 min
 Delta R.T.: -0.003 min
 Response: 57862
 Conc: 12.07 ng/ml



#32 AR-1260-2

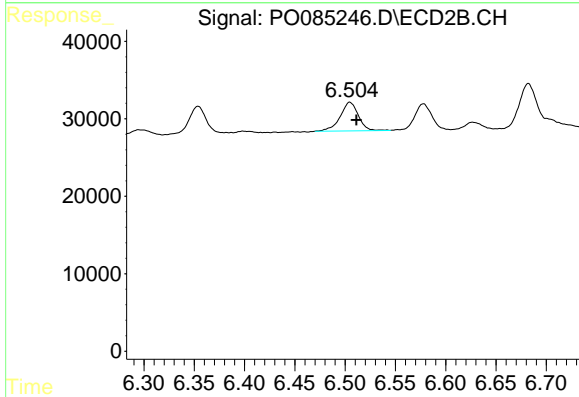
R.T.: 6.354 min
 Delta R.T.: -0.005 min
 Response: 41416
 Conc: 13.24 ng/ml



#33 AR-1260-3

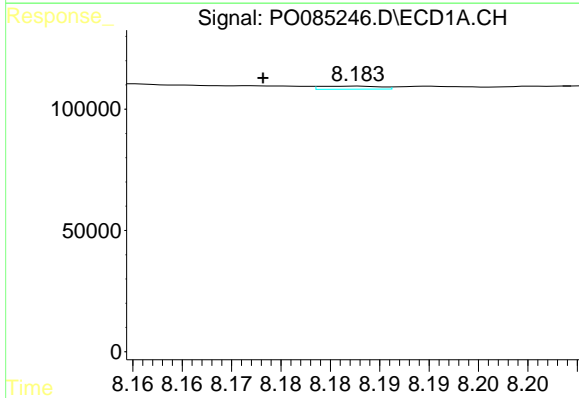
R.T.: 7.942 min
 Delta R.T.: 0.000 min
 Response: 2350
 Conc: 0.72 ng/ml

Instrument :
 ECD_O
 ClientSampleId :



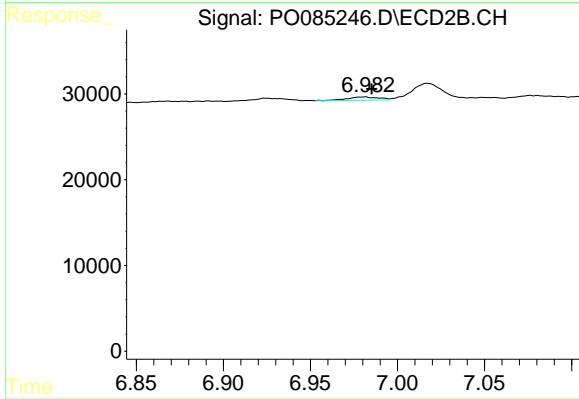
#33 AR-1260-3

R.T.: 6.505 min
 Delta R.T.: -0.007 min
 Response: 46478
 Conc: 15.01 ng/ml



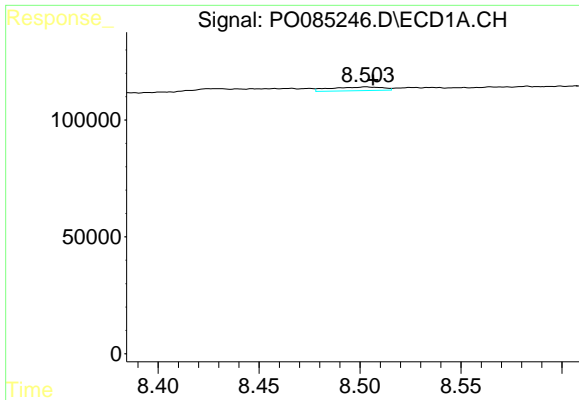
#34 AR-1260-4

R.T.: 8.183 min
 Delta R.T.: 0.009 min
 Response: 5400
 Conc: 1.41 ng/ml



#34 AR-1260-4

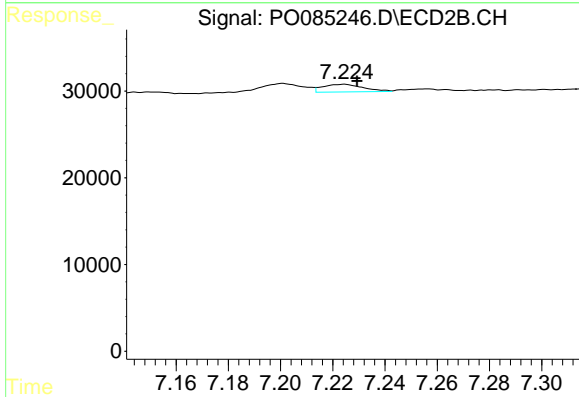
R.T.: 6.981 min
 Delta R.T.: -0.004 min
 Response: 4960
 Conc: 2.25 ng/ml



#35 AR-1260-5

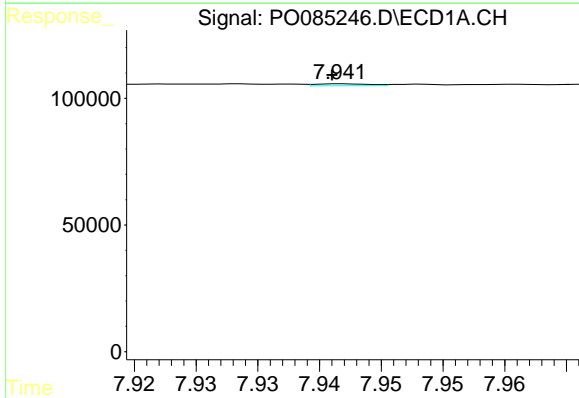
R.T.: 8.503 min
 Delta R.T.: -0.003 min
 Response: 28105
 Conc: 4.08 ng/ml

Instrument :
 ECD_O
 ClientSampleId :



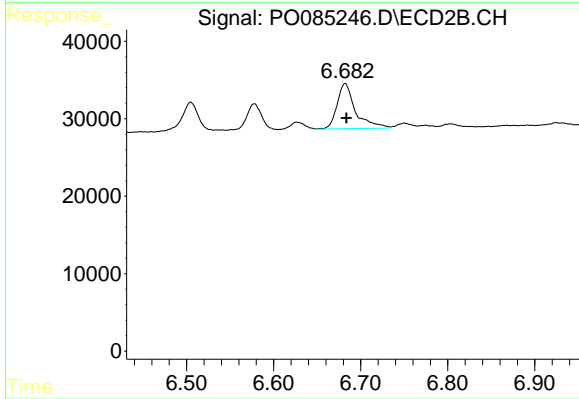
#35 AR-1260-5

R.T.: 7.224 min
 Delta R.T.: -0.005 min
 Response: 9442
 Conc: 1.90 ng/ml



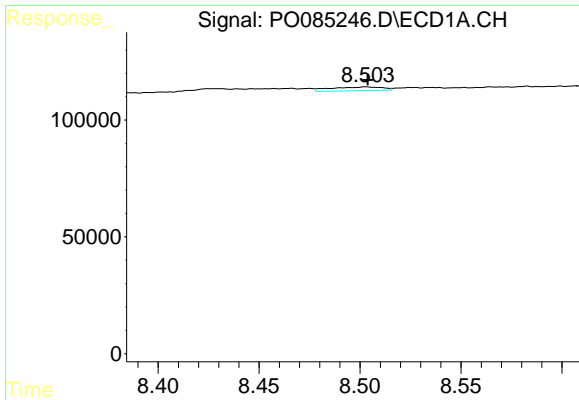
#36 AR-1262-1

R.T.: 7.942 min
 Delta R.T.: 0.000 min
 Response: 2350
 Conc: 0.52 ng/ml



#36 AR-1262-1

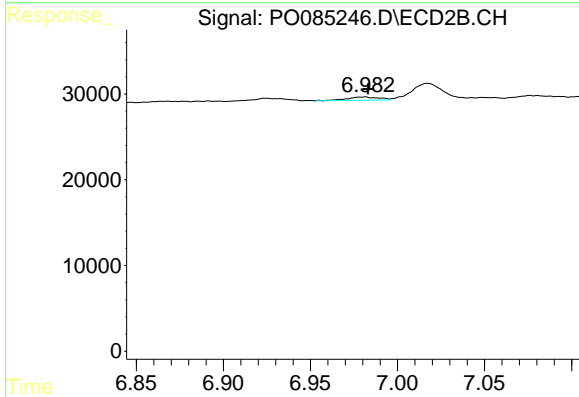
R.T.: 6.682 min
 Delta R.T.: -0.002 min
 Response: 85299
 Conc: 49.65 ng/ml



#37 AR-1262-2

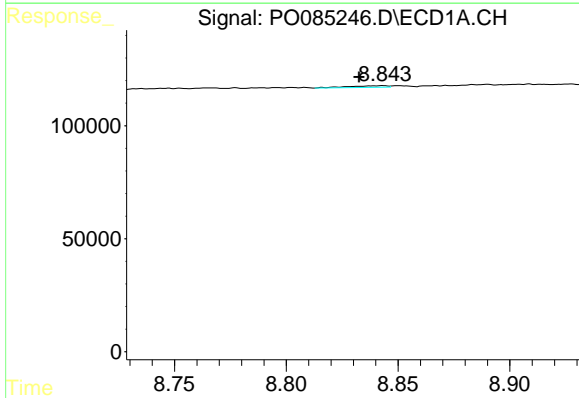
R.T.: 8.503 min
 Delta R.T.: 0.000 min
 Response: 28105
 Conc: 3.42 ng/ml

Instrument :
 ECD_O
 ClientSampleId :



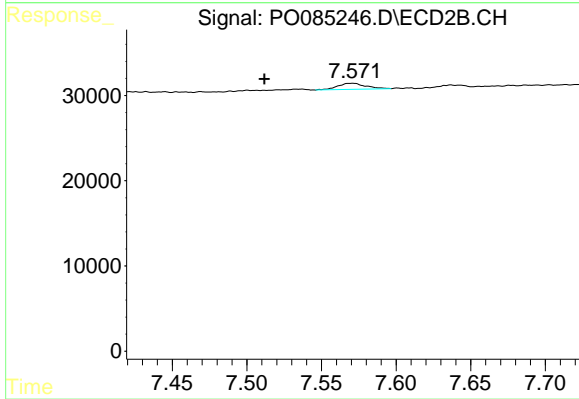
#37 AR-1262-2

R.T.: 6.981 min
 Delta R.T.: -0.002 min
 Response: 4960
 Conc: 1.72 ng/ml



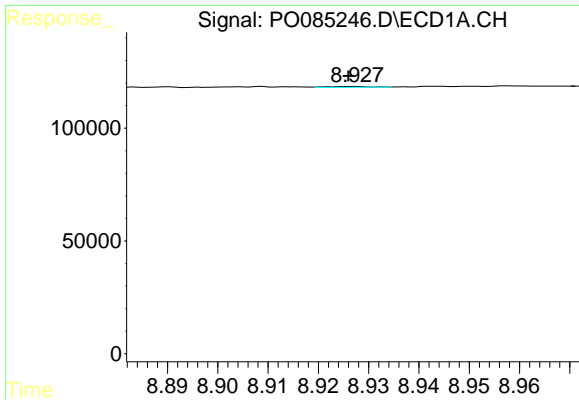
#38 AR-1262-3

R.T.: 8.843 min
 Delta R.T.: 0.011 min
 Response: 8692
 Conc: 1.62 ng/ml



#38 AR-1262-3

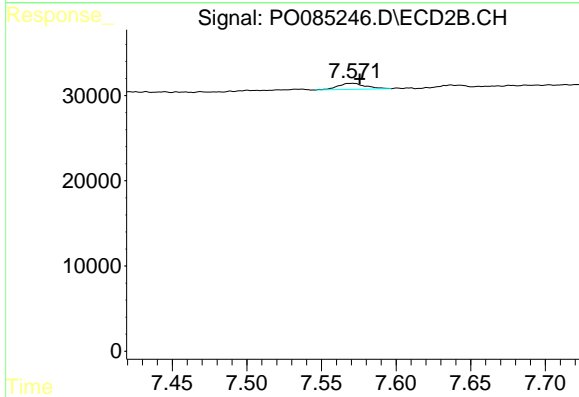
R.T.: 7.570 min
 Delta R.T.: 0.059 min
 Response: 9351
 Conc: 4.14 ng/ml



#39 AR-1262-4

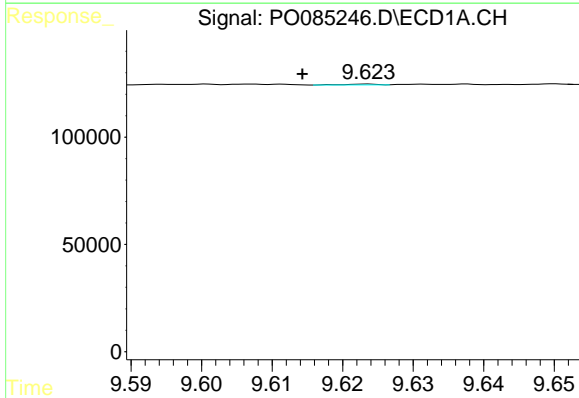
R.T.: 8.928 min
 Delta R.T.: 0.001 min
 Response: 2102
 Conc: 0.85 ng/ml

Instrument :
 ECD_O
 ClientSampleId :



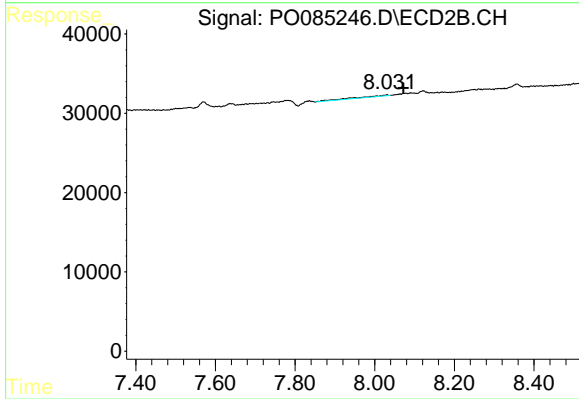
#39 AR-1262-4

R.T.: 7.570 min
 Delta R.T.: -0.005 min
 Response: 9351
 Conc: 2.27 ng/ml



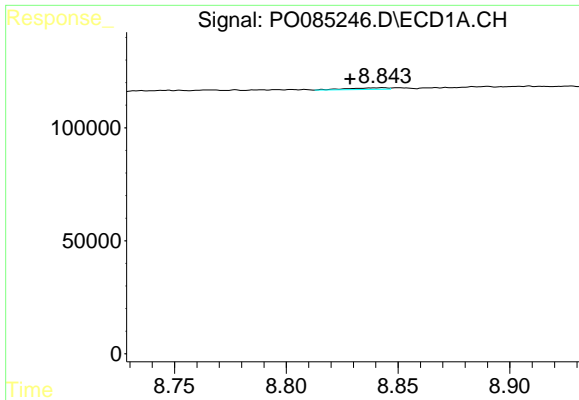
#40 AR-1262-5

R.T.: 9.623 min
 Delta R.T.: 0.009 min
 Response: 1430
 Conc: 0.52 ng/ml



#40 AR-1262-5

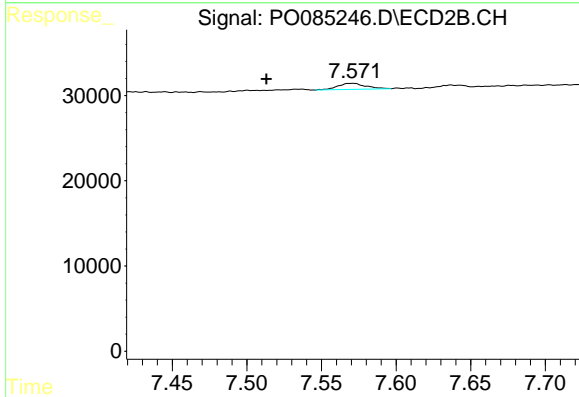
R.T.: 8.031 min
 Delta R.T.: -0.041 min
 Response: 8281
 Conc: 4.45 ng/ml



#41 AR-1268-1

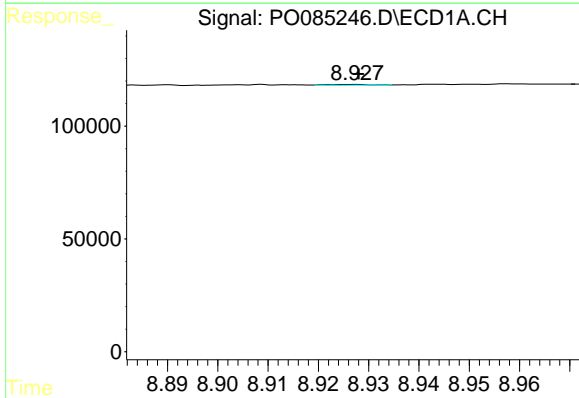
R.T.: 8.843 min
 Delta R.T.: 0.015 min
 Response: 8692
 Conc: 0.93 ng/ml

Instrument :
 ECD_O
 ClientSampleId :



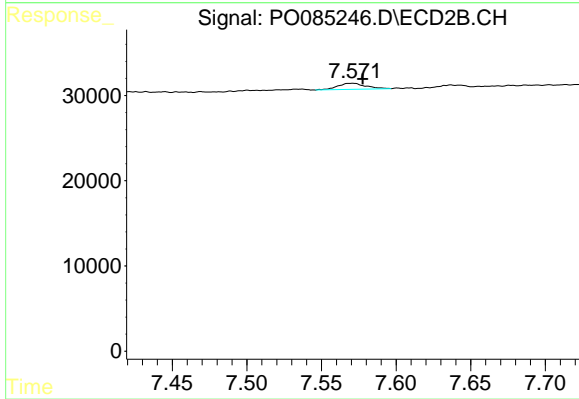
#41 AR-1268-1

R.T.: 7.570 min
 Delta R.T.: 0.057 min
 Response: 9351
 Conc: 1.43 ng/ml



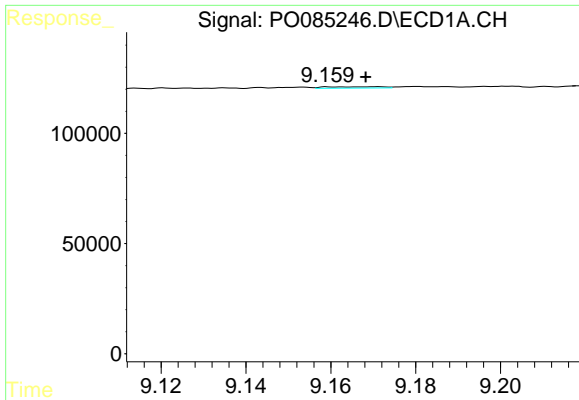
#42 AR-1268-2

R.T.: 8.928 min
 Delta R.T.: 0.000 min
 Response: 2102
 Conc: 0.25 ng/ml



#42 AR-1268-2

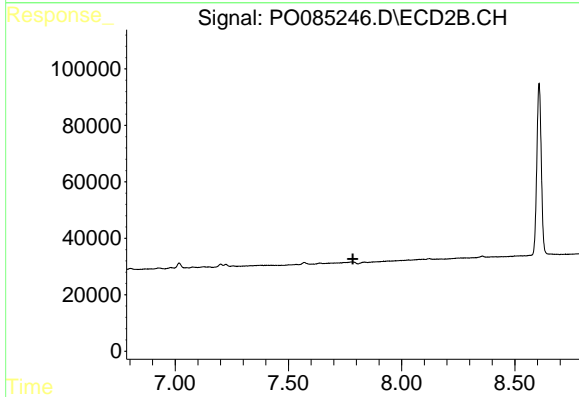
R.T.: 7.570 min
 Delta R.T.: -0.007 min
 Response: 9351
 Conc: 1.60 ng/ml



#43 AR-1268-3

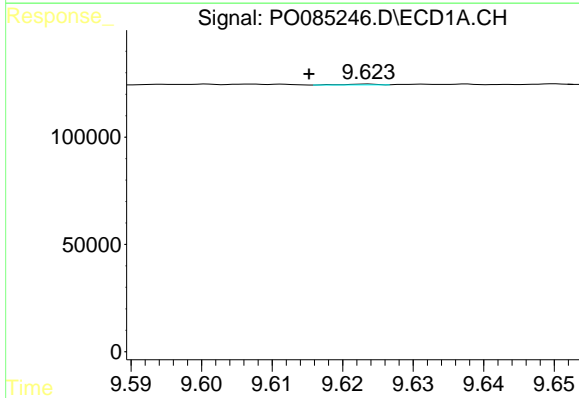
R.T.: 9.171 min
 Delta R.T.: 0.003 min
 Response: 5551
 Conc: 0.77 ng/ml

Instrument :
 ECD_O
 ClientSampleId :



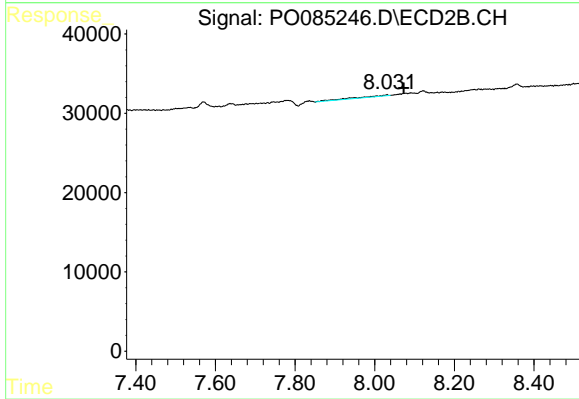
#43 AR-1268-3

R.T.: 0.000 min
 Exp R.T. : 7.785 min
 Response: 0
 Conc: N.D.



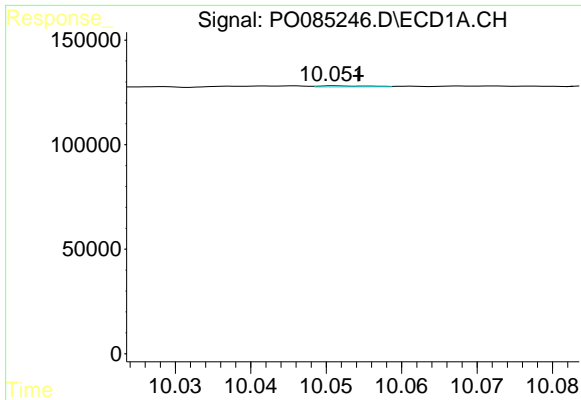
#44 AR-1268-4

R.T.: 9.623 min
 Delta R.T.: 0.008 min
 Response: 1430
 Conc: 0.47 ng/ml



#44 AR-1268-4

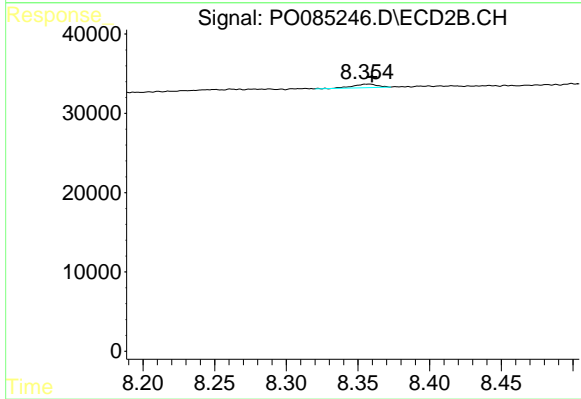
R.T.: 8.031 min
 Delta R.T.: -0.042 min
 Response: 8281
 Conc: 3.90 ng/ml



#45 AR-1268-5

R.T.: 10.051 min
Delta R.T.: -0.003 min
Response: 2734
Conc: 0.11 ng/ml

Instrument :
ECD_O
ClientSampleId :



#45 AR-1268-5

R.T.: 8.357 min
Delta R.T.: -0.003 min
Response: 5373
Conc: 0.37 ng/ml