

Data Path : Z:\pestpcbsrv\HPCHEM1\ECD\_0\Data\P0031021\  
 Data File : P0076037.D  
 Signal(s) : Signal #1: ECD1A.CH Signal #2: ECD2B.CH  
 Acq On : 10 Mar 2021 21:00  
 Operator : DD\AJ  
 Sample : I.BLK  
 Misc :  
 ALS Vial : 2 Sample Multiplier: 1

Instrument :  
 ECD\_0  
 ClientSampleId :

Integration File signal 1: autoint1.e  
 Integration File signal 2: autoint2.e  
 Quant Time: Mar 11 02:30:06 2021  
 Quant Method : Z:\pestpcbsrv\HPCHEM1\ECD\_0\methods\P0030421.M  
 Quant Title : GC EXTRACTABLES  
 QLast Update : Fri Mar 05 08:07:39 2021  
 Response via : Initial Calibration  
 Integrator: ChemStation 6890 Scale Mode: Small noise peaks clipped

Volume Inj. : 2 µl  
 Signal #1 Phase : ZB-MR1 Signal #2 Phase: ZB-MR2  
 Signal #1 Info : 30Mx0.32mmx 0.50µ Signal #2 Info : 30M x 0.32mm x 0.25µm

Compound	RT#1	RT#2	Resp#1	Resp#2	ng/ml	ng/ml
System Monitoring Compounds						
1) SA Tetrachlo...	4.926	3.941	1337532	1042395	22.439	23.368
2) SA Decachlor...	10.926	9.211	919474	927014	27.989	25.495
Target Compounds						
9) L2 AR-1221-2	5.278	0.000	15445	0	33.677	N.D. #
24) L5 AR-1248-4	7.177f	0.000	2160	0	1.130	N.D. #
26) L6 AR-1254-1	7.170	0.000	19578	0	9.418	N.D. #

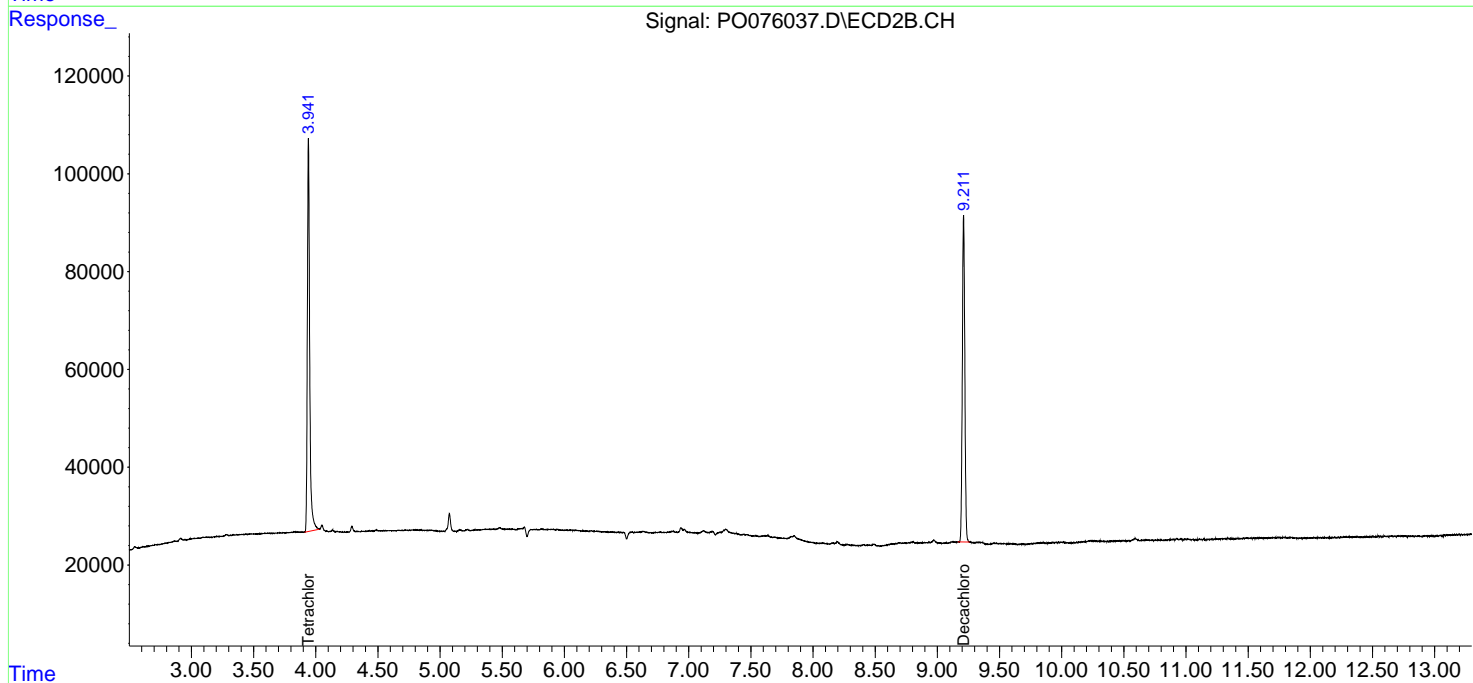
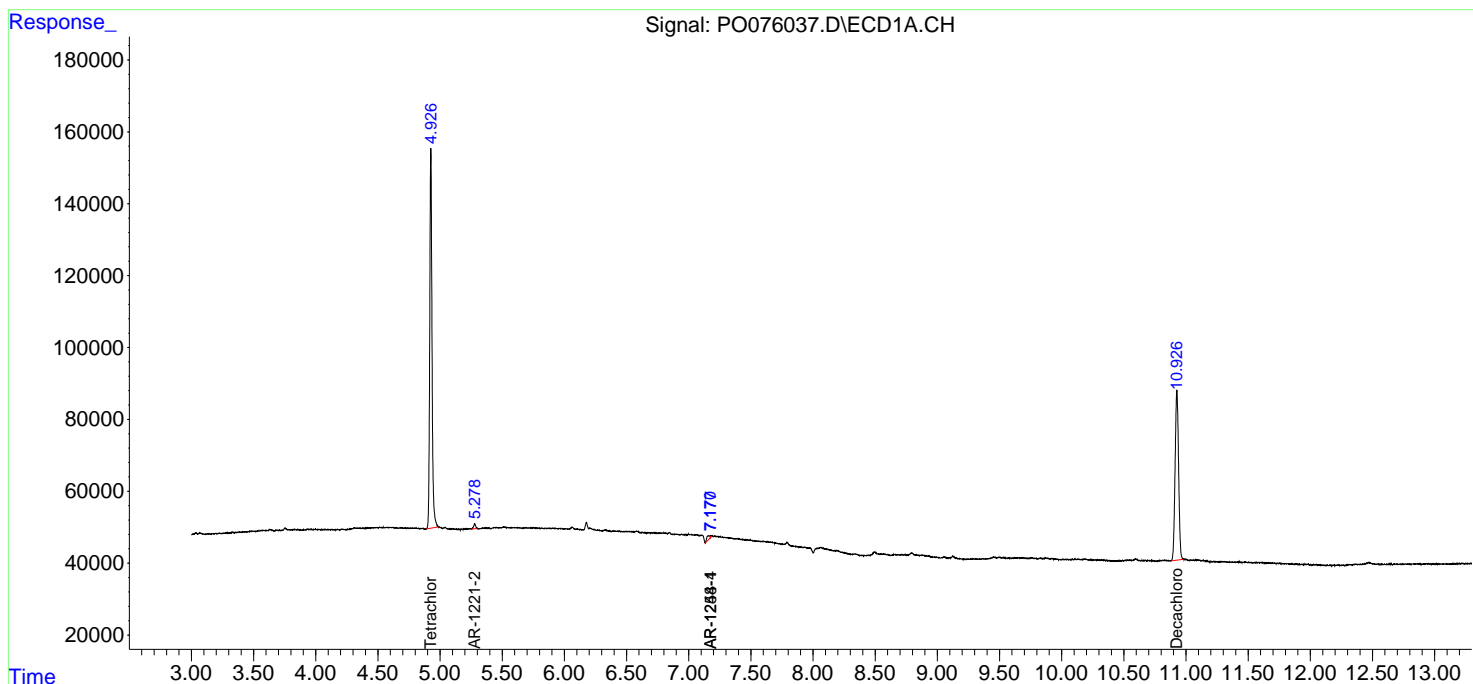
(f)=RT Delta > 1/2 Window (#)=Amounts differ by > 25% (m)=manual int.

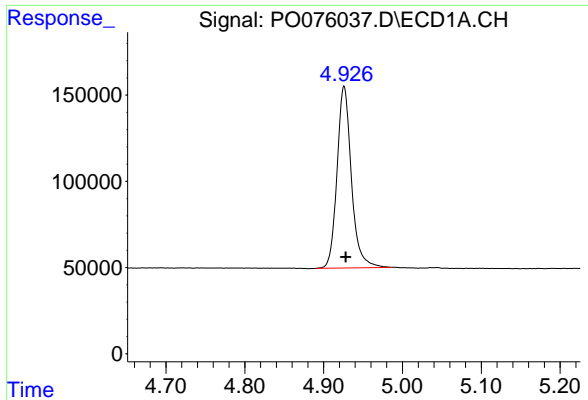
Data Path : Z:\pestpcbsrv\HPCHEM1\ECD\_0\Data\P0031021\  
 Data File : P0076037.D  
 Signal(s) : Signal #1: ECD1A.CH Signal #2: ECD2B.CH  
 Acq On : 10 Mar 2021 21:00  
 Operator : DD\AJ  
 Sample : I.BLK  
 Misc :  
 ALS Vial : 2 Sample Multiplier: 1

Instrument :  
 ECD\_O  
 ClientSampleId :

Integration File signal 1: autoint1.e  
 Integration File signal 2: autoint2.e  
 Quant Time: Mar 11 02:30:06 2021  
 Quant Method : Z:\pestpcbsrv\HPCHEM1\ECD\_0\methods\P0030421.M  
 Quant Title : GC EXTRACTABLES  
 QLast Update : Fri Mar 05 08:07:39 2021  
 Response via : Initial Calibration  
 Integrator: ChemStation 6890 Scale Mode: Small noise peaks clipped

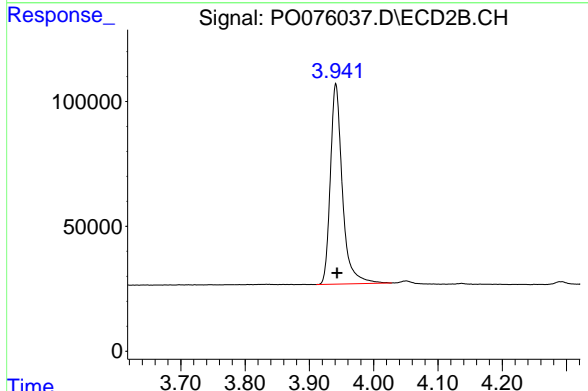
Volume Inj. : 2 µl  
 Signal #1 Phase : ZB-MR1 Signal #2 Phase: ZB-MR2  
 Signal #1 Info : 30Mx0.32mmx 0.50µ Signal #2 Info : 30M x 0.32mm x 0.25µm



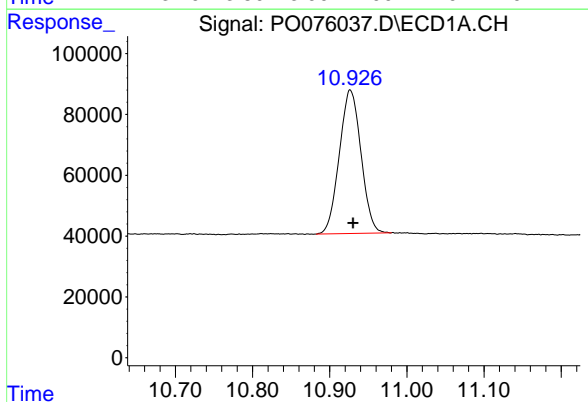


#1 Tetrachloro-m-xylene  
 R.T.: 4.926 min  
 Delta R.T.: -0.002 min  
 Response: 1337532  
 Conc: 22.44 ng/ml

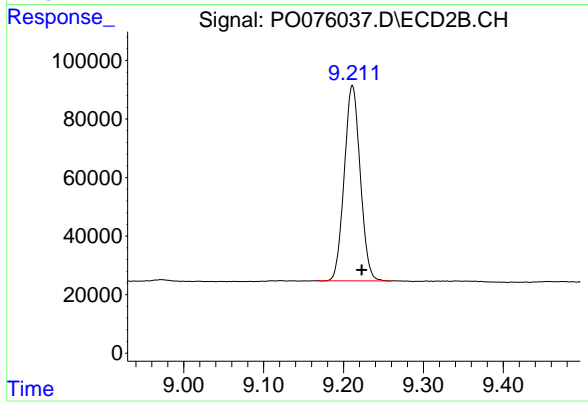
Instrument :  
 ECD\_O  
 ClientSampleId :



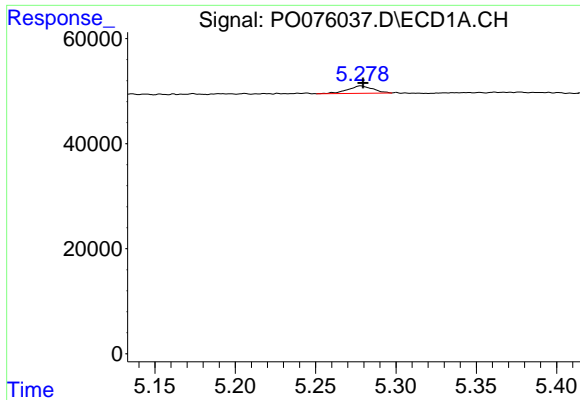
#1 Tetrachloro-m-xylene  
 R.T.: 3.941 min  
 Delta R.T.: -0.002 min  
 Response: 1042395  
 Conc: 23.37 ng/ml



#2 Decachlorobiphenyl  
 R.T.: 10.926 min  
 Delta R.T.: -0.004 min  
 Response: 919474  
 Conc: 27.99 ng/ml

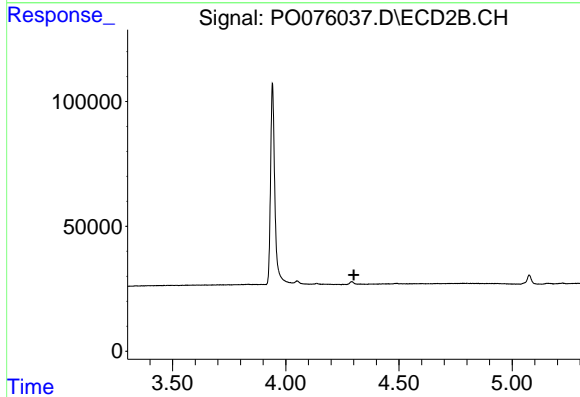


#2 Decachlorobiphenyl  
 R.T.: 9.211 min  
 Delta R.T.: -0.012 min  
 Response: 927014  
 Conc: 25.49 ng/ml

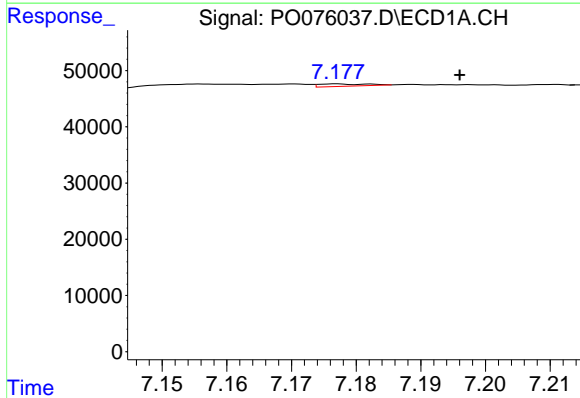


#9 AR-1221-2  
 R.T.: 5.278 min  
 Delta R.T.: -0.001 min  
 Response: 15445  
 Conc: 33.68 ng/ml

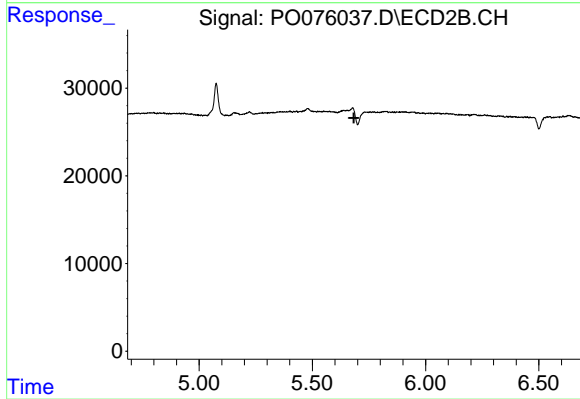
Instrument :  
 ECD\_O  
 ClientSampled :



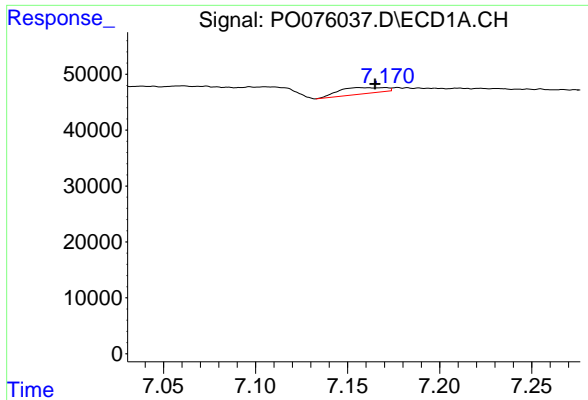
#9 AR-1221-2  
 R.T.: 0.000 min  
 Exp R.T. : 4.301 min  
 Response: 0  
 Conc: N.D.



#24 AR-1248-4  
 R.T.: 7.177 min  
 Delta R.T.: -0.019 min  
 Response: 2160  
 Conc: 1.13 ng/ml



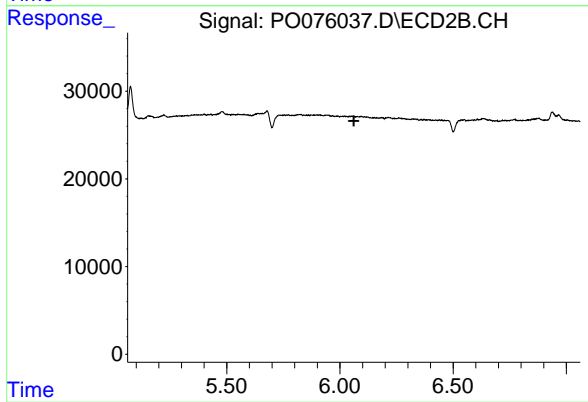
#24 AR-1248-4  
 R.T.: 0.000 min  
 Exp R.T. : 5.683 min  
 Response: 0  
 Conc: N.D.



#26 AR-1254-1

R.T.: 7.170 min  
Delta R.T.: 0.005 min  
Response: 19578  
Conc: 9.42 ng/ml

Instrument :  
ECD\_O  
ClientSampleId :



#26 AR-1254-1

R.T.: 0.000 min  
Exp R.T. : 6.062 min  
Response: 0  
Conc: N.D.