

Data Path : Z:\pestpcbsrv\HPCHEM1\ECD_0\Data\P0031021\
 Data File : P0076017.D
 Signal(s) : Signal #1: ECD1A.CH Signal #2: ECD2B.CH
 Acq On : 10 Mar 2021 15:17
 Operator : DD\AJ
 Sample : M1608-01
 Misc :
 ALS Vial : 16 Sample Multiplier: 1

Instrument :
 ECD_0
 ClientSampleId :
 HD-02-030921

Integration File signal 1: autoint1.e
 Integration File signal 2: autoint2.e
 Quant Time: Mar 11 02:23:33 2021
 Quant Method : Z:\pestpcbsrv\HPCHEM1\ECD_0\methods\P0030421.M
 Quant Title : GC EXTRACTABLES
 QLast Update : Fri Mar 05 08:07:39 2021
 Response via : Initial Calibration
 Integrator: ChemStation 6890 Scale Mode: Small noise peaks clipped

Volume Inj. : 2 µl
 Signal #1 Phase : ZB-MR1 Signal #2 Phase: ZB-MR2
 Signal #1 Info : 30Mx0.32mmx 0.50µ Signal #2 Info : 30M x 0.32mm x 0.25µm

Compound	RT#1	RT#2	Resp#1	Resp#2	ng/ml	ng/ml

System Monitoring Compounds						
1) SA Tetrachlo...	4.925	3.941	1113646	918516	18.683	20.591
2) SA Decachlor...	10.927	9.212	884338	857416	26.919	23.581

Target Compounds

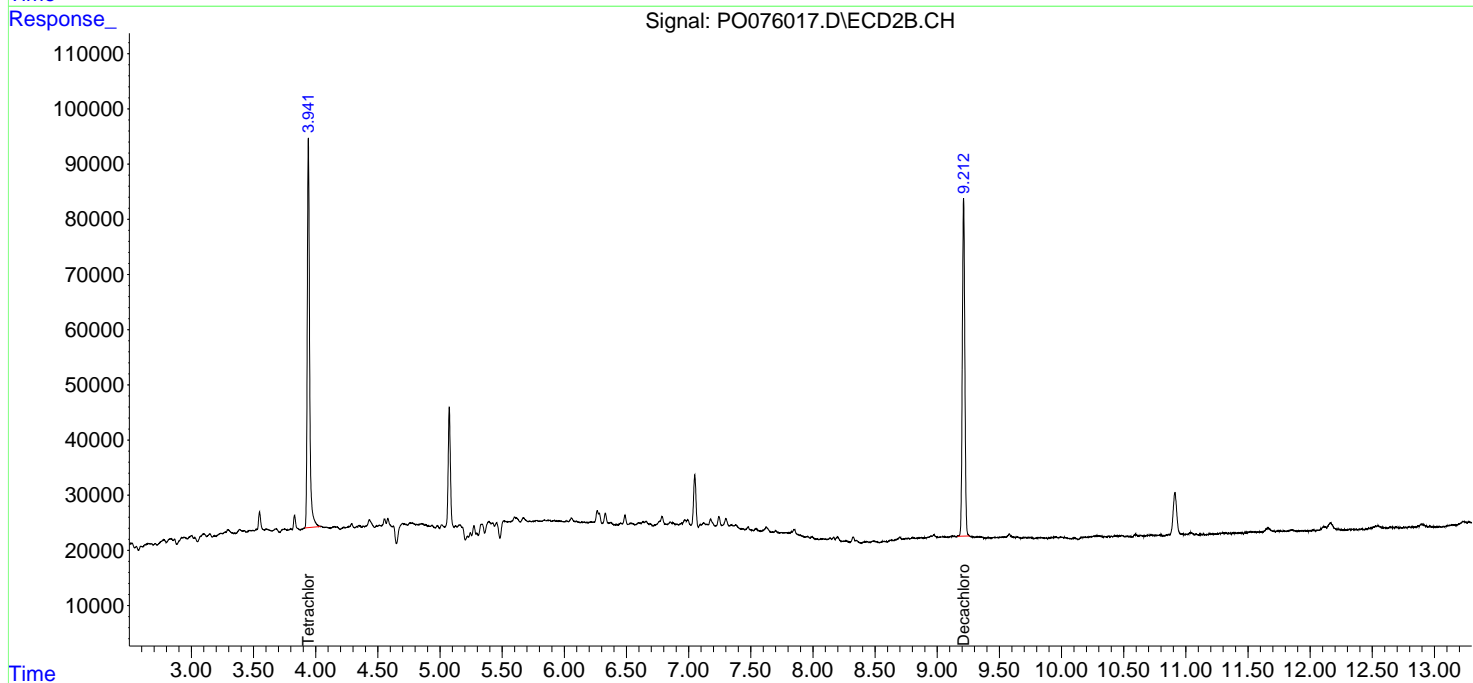
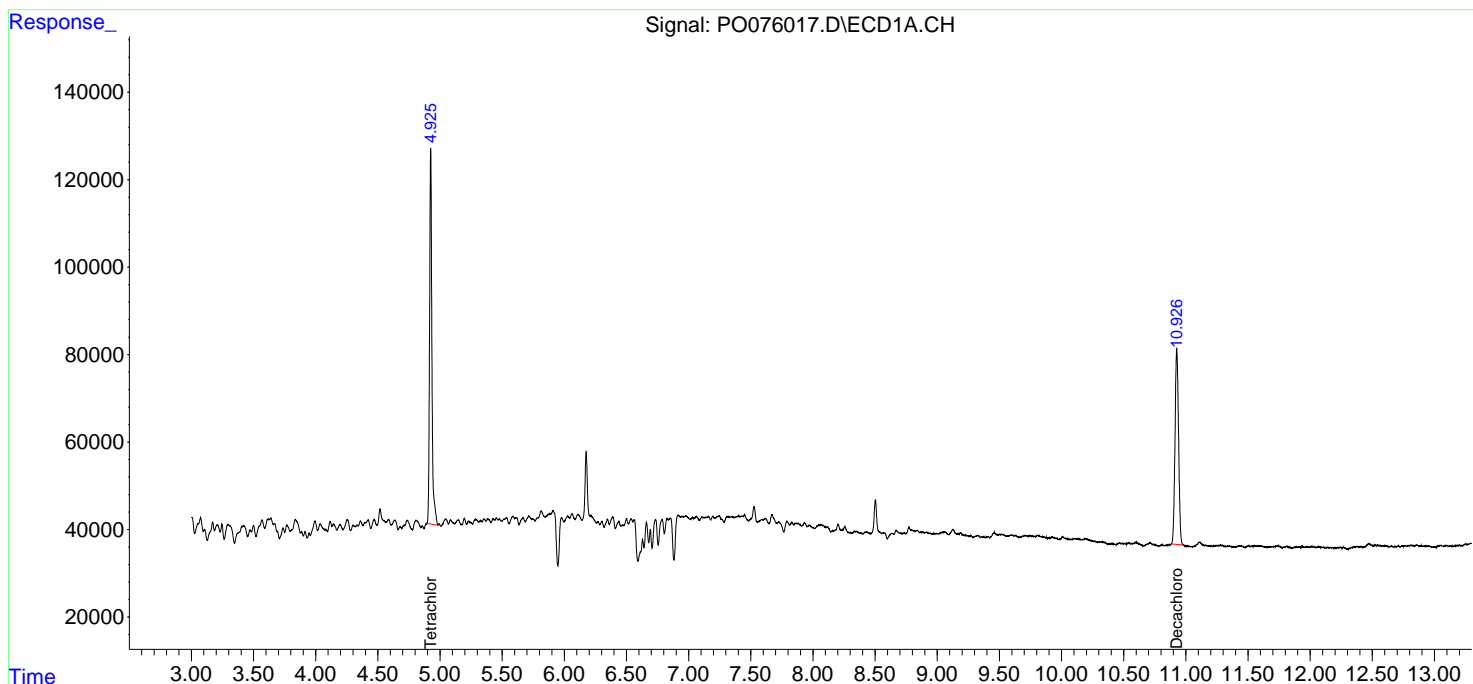
(f)=RT Delta > 1/2 Window (#)=Amounts differ by > 25% (m)=manual int.

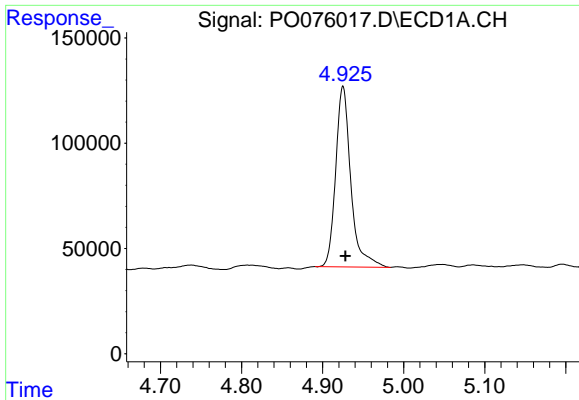
Data Path : Z:\pestpcbsrv\HPCHEM1\ECD_0\Data\P0031021\
 Data File : P0076017.D
 Signal(s) : Signal #1: ECD1A.CH Signal #2: ECD2B.CH
 Acq On : 10 Mar 2021 15:17
 Operator : DD\AJ
 Sample : M1608-01
 Misc :
 ALS Vial : 16 Sample Multiplier: 1

Instrument :
 ECD_O
 ClientSampleId :
 HD-02-030921

Integration File signal 1: autoint1.e
 Integration File signal 2: autoint2.e
 Quant Time: Mar 11 02:23:33 2021
 Quant Method : Z:\pestpcbsrv\HPCHEM1\ECD_0\methods\P0030421.M
 Quant Title : GC EXTRACTABLES
 QLast Update : Fri Mar 05 08:07:39 2021
 Response via : Initial Calibration
 Integrator: ChemStation 6890 Scale Mode: Small noise peaks clipped

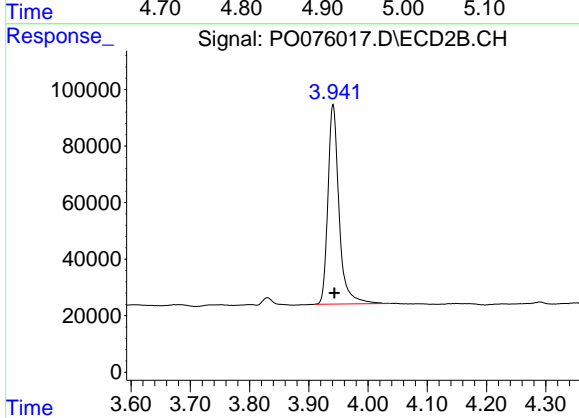
Volume Inj. : 2 µl
 Signal #1 Phase : ZB-MR1 Signal #2 Phase: ZB-MR2
 Signal #1 Info : 30Mx0.32mmx 0.50µ Signal #2 Info : 30M x 0.32mm x 0.25µm



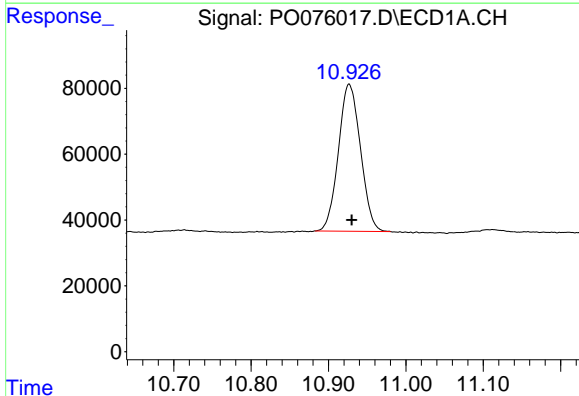


#1 Tetrachloro-m-xylene
 R.T.: 4.925 min
 Delta R.T.: -0.003 min
 Response: 1113646
 Conc: 18.68 ng/ml

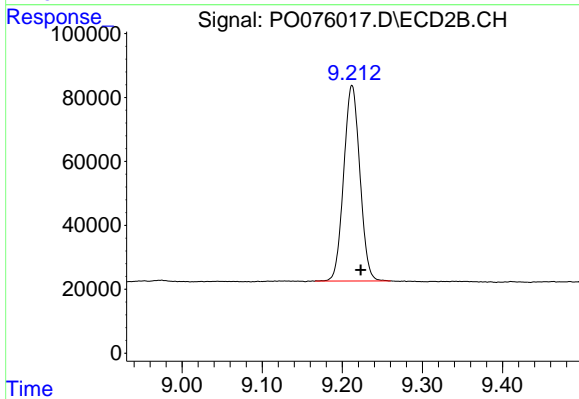
Instrument :
 ECD_O
 ClientSampleId :
 HD-02-030921



#1 Tetrachloro-m-xylene
 R.T.: 3.941 min
 Delta R.T.: -0.002 min
 Response: 918516
 Conc: 20.59 ng/ml



#2 Decachlorobiphenyl
 R.T.: 10.927 min
 Delta R.T.: -0.003 min
 Response: 884338
 Conc: 26.92 ng/ml



#2 Decachlorobiphenyl
 R.T.: 9.212 min
 Delta R.T.: -0.011 min
 Response: 857416
 Conc: 23.58 ng/ml