

Data Path : Z:\pestpcbsrv\HPCHEM1\ECD\_0\Data\P0031025\  
 Data File : PO109772.D  
 Signal(s) : Signal #1: ECD1A.ch Signal #2: ECD2B.ch  
 Acq On : 10 Mar 2025 19:57  
 Operator : YP/AJ  
 Sample : AR1254CCC500  
 Misc :  
 ALS Vial : 6 Sample Multiplier: 1

Instrument :  
 ECD\_0  
 ClientSampleId :  
 AR1254CCC500

Integration File signal 1: autoint1.e  
 Integration File signal 2: autoint2.e  
 Quant Time: Mar 11 01:02:41 2025  
 Quant Method : Z:\pestpcbsrv\HPCHEM1\ECD\_0\methods\P0022025.M  
 Quant Title : GC EXTRACTABLES  
 QLast Update : Fri Feb 21 04:40:23 2025  
 Response via : Initial Calibration  
 Integrator: ChemStation

Volume Inj. : 2 µl  
 Signal #1 Phase : ZB-MR1 Signal #2 Phase: ZB-MR2  
 Signal #1 Info : 30Mx0.32mmx 0.50µ Signal #2 Info : 30M x 0.32mm x 0.25µm

Compound	RT#1	RT#2	Resp#1	Resp#2	ng/ml	ng/ml
-----						
System Monitoring Compounds						
1) SA Tetrachlo...	3.695	3.692	486.0E6	282.6E6	51.344	53.991
2) SA Decachlor...	8.749	8.701	354.9E6	138.5E6	41.253	43.502
Target Compounds						
3) L1 AR-1016-1	4.788	4.774	5192285	2997936	16.842	19.197
4) L1 AR-1016-2	4.807	4.793	4188307	2415756	9.948	11.162
5) L1 AR-1016-3	4.863	4.971	2829356	1553160	9.565	13.002 #
6) L1 AR-1016-4	4.985	5.011	2667205	55364565	11.507	531.991 #
7) L1 AR-1016-5	5.242	5.224	76882187	44074425	297.728	323.474
8) L2 AR-1221-1	3.907	3.900	300844	202432	2.281	2.955 #
9) L2 AR-1221-2	3.997	3.992	7906765	4899648	80.108	95.436
10) L2 AR-1221-3	4.071	4.063	1576790	968203	5.843	6.658
11) L3 AR-1232-1	4.071	4.063	1576790	968203	7.547	8.686
12) L3 AR-1232-2	4.565	4.793	2349713	2415756	20.242	23.382
13) L3 AR-1232-3	4.807	4.971	4188307	1553160	20.741	27.358 #
14) L3 AR-1232-4	4.985	5.053	2667205	19477746	23.981	354.821 #
15) L3 AR-1232-5	5.026	5.224	95762400	44074425	1172.573	749.502 #
16) L4 AR-1242-1	4.788	4.774	5192285	2997936	19.836	22.652
17) L4 AR-1242-2	4.807	4.793	4188307	2415756	11.763	13.309
18) L4 AR-1242-3	4.863	4.971	2829356	1553160	11.256	15.551 #
19) L4 AR-1242-4	4.985	5.053	2667205	19477746	13.577	182.174 #
20) L4 AR-1242-5	5.638	5.576	41518433	144.9E6	193.671	1152.673 #
21) L5 AR-1248-1	4.788	4.774	5192285	2997936	26.025	29.822
22) L5 AR-1248-2	5.026	5.011	95762400	55364565	344.109	380.566
23) L5 AR-1248-3	5.242	5.053	76882187	19477746	220.058	125.656 #
24) L5 AR-1248-4	5.597	5.224	260.7E6	44074425	546.472	243.778 #
25) L5 AR-1248-5	5.638	5.617	41518433	23122292	121.218	134.272
26) L6 AR-1254-1	5.597	5.576	260.7E6	144.9E6	505.655	554.019
27) L6 AR-1254-2	5.746	5.724	229.4E6	127.5E6	509.364	543.451
28) L6 AR-1254-3	6.152	6.127	359.0E6	193.7E6	501.447	543.139
29) L6 AR-1254-4	6.381	6.355	218.4E6	111.1E6	521.576	575.316
30) L6 AR-1254-5	6.801	6.772	301.4E6	154.5E6	483.082	520.655
31) L7 AR-1260-1	6.284	6.257	179.8E6	96702729	385.789	408.167
32) L7 AR-1260-2	6.472	6.444	145.9E6	75615560	258.096	274.795
33) L7 AR-1260-3	6.870	6.597	25428507	72862711	53.459	285.657 #
34) L7 AR-1260-4	7.101	7.069	15405558	7956473	35.694	38.588
35) L7 AR-1260-5	7.341	7.309	33607822	17399446	33.815	38.857
36) L8 AR-1262-1	6.870	6.841	25428507	13736218	38.190	43.303
37) L8 AR-1262-2	7.341	7.309	33607822	17399446	29.749	34.895
38) L8 AR-1262-3	7.629	7.593	1050817	463865	2.344	2.364
39) L8 AR-1262-4	7.688	7.654	32418905	16164160	39.096	45.547
40) L8 AR-1262-5	8.188	8.151	1862970	540130	4.990	3.774
41) L9 AR-1268-1	7.629	7.593	1050817	463865	0.794	0.812

Data Path : Z:\pestpcbsrv\HPCHEM1\ECD\_0\Data\P0031025\  
 Data File : P0109772.D  
 Signal(s) : Signal #1: ECD1A.ch Signal #2: ECD2B.ch  
 Acq On : 10 Mar 2025 19:57  
 Operator : YP/AJ  
 Sample : AR1254CCC500  
 Misc :  
 ALS Vial : 6 Sample Multiplier: 1

Instrument :  
 ECD\_0  
 ClientSampleId :  
 AR1254CCC500

Integration File signal 1: autoint1.e  
 Integration File signal 2: autoint2.e  
 Quant Time: Mar 11 01:02:41 2025  
 Quant Method : Z:\pestpcbsrv\HPCHEM1\ECD\_0\methods\P0022025.M  
 Quant Title : GC EXTRACTABLES  
 QLast Update : Fri Feb 21 04:40:23 2025  
 Response via : Initial Calibration  
 Integrator: ChemStation

Volume Inj. : 2 µl  
 Signal #1 Phase : ZB-MR1 Signal #2 Phase: ZB-MR2  
 Signal #1 Info : 30Mx0.32mmx 0.50µ Signal #2 Info : 30M x 0.32mm x 0.25µm

	Compound	RT#1	RT#2	Resp#1	Resp#2	ng/ml	ng/ml
42)	L9 AR-1268-2	7.688	7.654	32418905	16164160	26.812	30.792
43)	L9 AR-1268-3	7.901	7.866	1523208	918016	1.496	2.145 #
44)	L9 AR-1268-4	8.188	8.151	1862970	540130	4.385	3.348
45)	L9 AR-1268-5	8.487	8.443	2730786	1212912	0.904	1.110

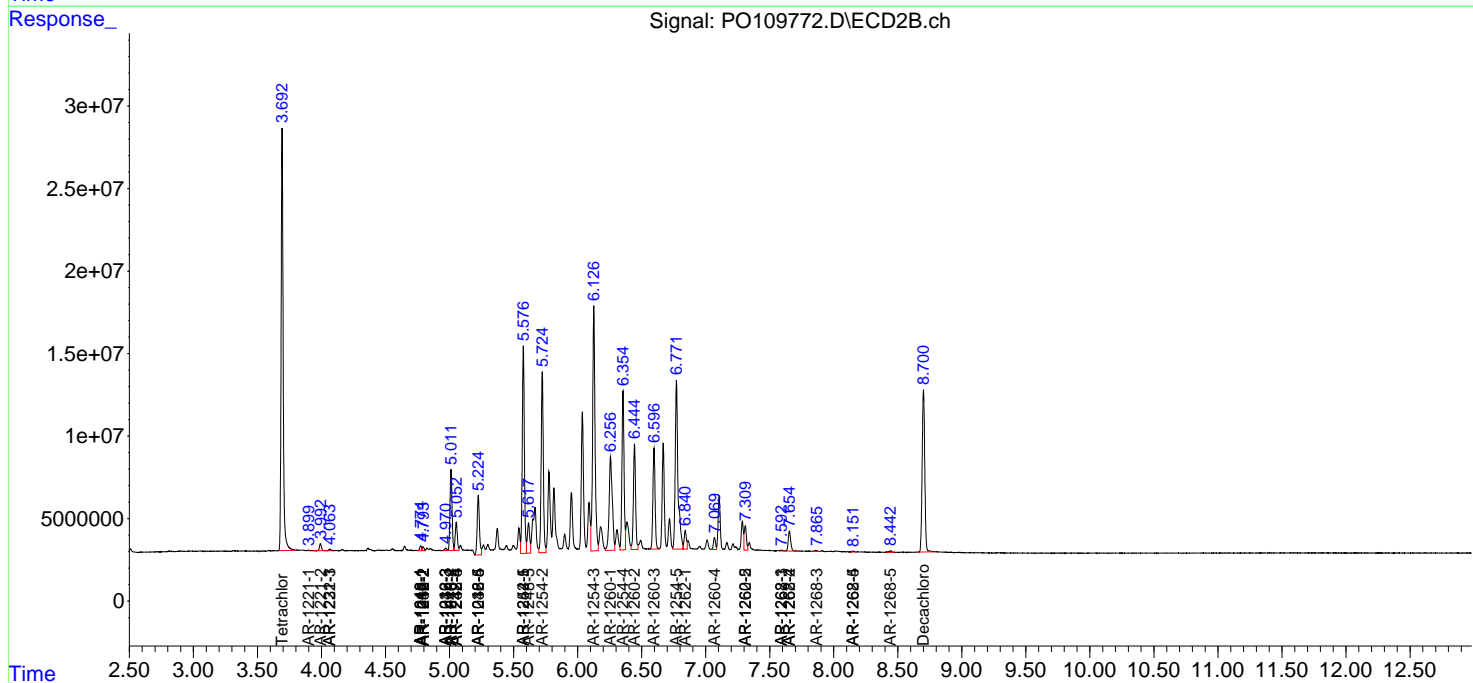
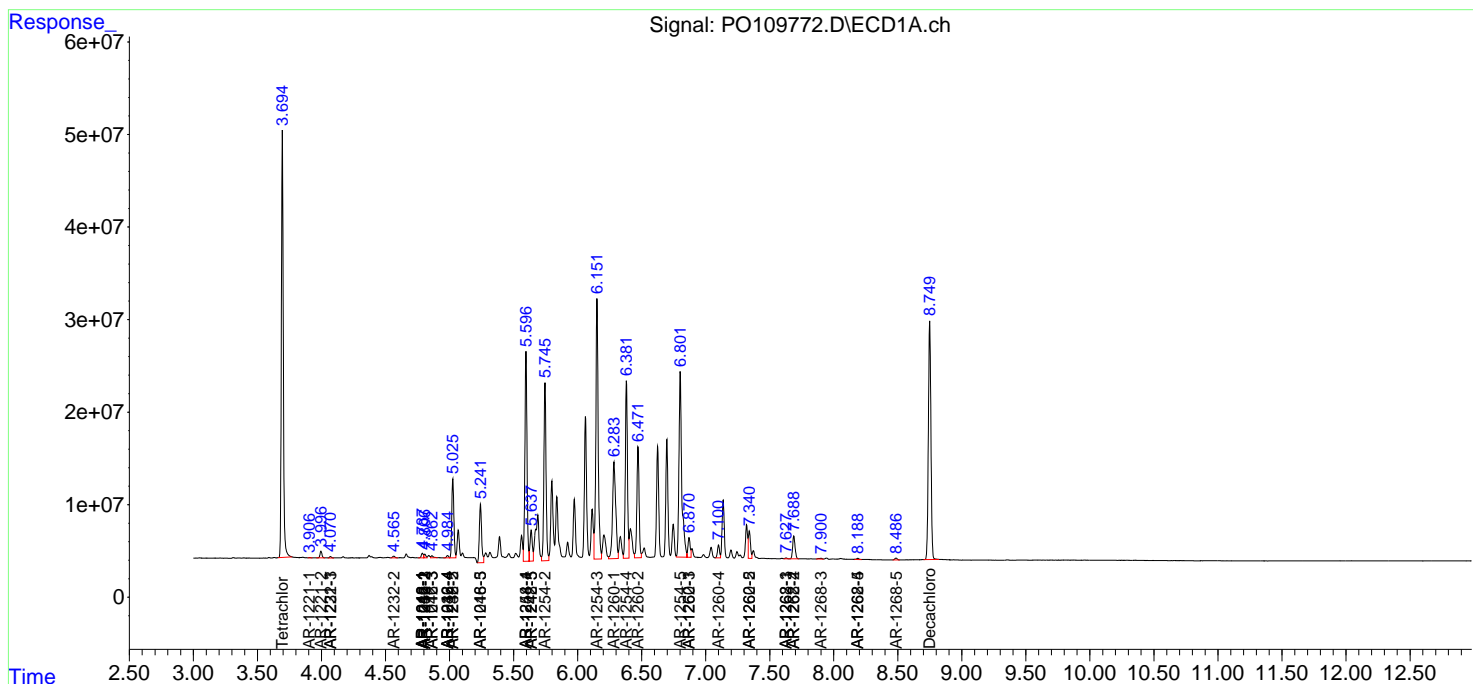
(f)=RT Delta > 1/2 Window (#)=Amounts differ by > 25% (m)=manual int.

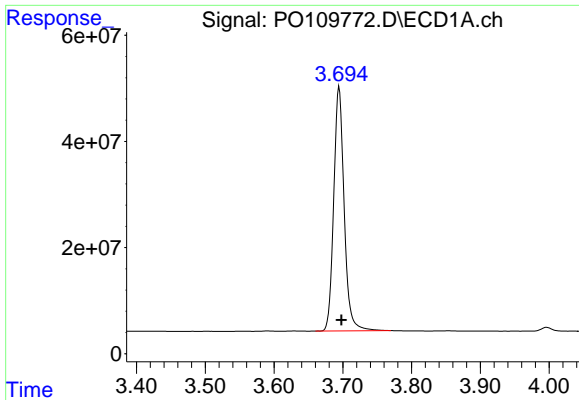
Data Path : Z:\pestpcbsrv\HPCHEM1\ECD\_O\Data\PO031025\  
 Data File : PO109772.D  
 Signal(s) : Signal #1: ECD1A.ch Signal #2: ECD2B.ch  
 Acq On : 10 Mar 2025 19:57  
 Operator : YP/AJ  
 Sample : AR1254CCC500  
 Misc :  
 ALS Vial : 6 Sample Multiplier: 1

Instrument :  
 ECD\_O  
 ClientSampleId :  
 AR1254CCC500

Integration File signal 1: autoint1.e  
 Integration File signal 2: autoint2.e  
 Quant Time: Mar 11 01:02:41 2025  
 Quant Method : Z:\pestpcbsrv\HPCHEM1\ECD\_O\methods\PO022025.M  
 Quant Title : GC EXTRACTABLES  
 QLast Update : Fri Feb 21 04:40:23 2025  
 Response via : Initial Calibration  
 Integrator: ChemStation

Volume Inj. : 2 µl  
 Signal #1 Phase : ZB-MR1 Signal #2 Phase: ZB-MR2  
 Signal #1 Info : 30Mx0.32mmx 0.50µ Signal #2 Info : 30M x 0.32mm x 0.25µm

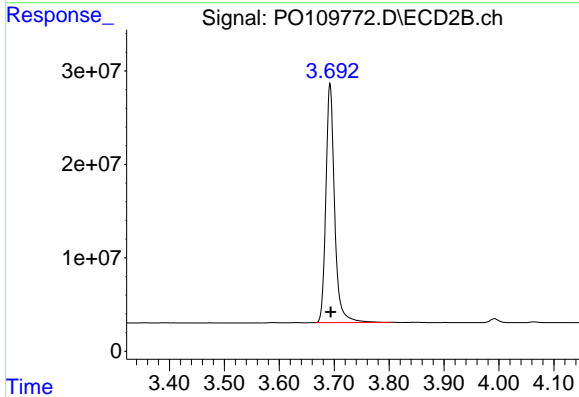




#1 Tetrachloro-m-xylene

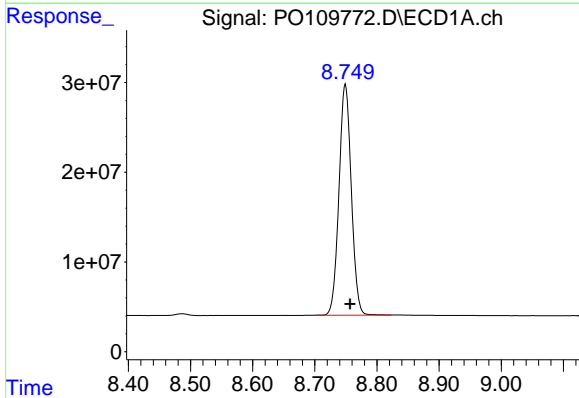
R.T.: 3.695 min  
 Delta R.T.: -0.003 min  
 Response: 485975805  
 Conc: 51.34 ng/ml

Instrument :  
 ECD\_O  
 ClientSampleId :  
 AR1254CCC500



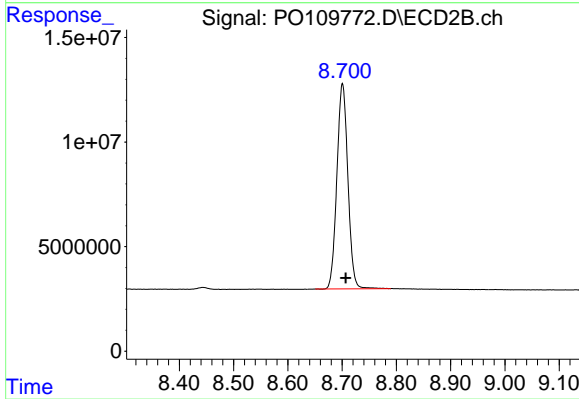
#1 Tetrachloro-m-xylene

R.T.: 3.692 min  
 Delta R.T.: -0.001 min  
 Response: 282599302  
 Conc: 53.99 ng/ml



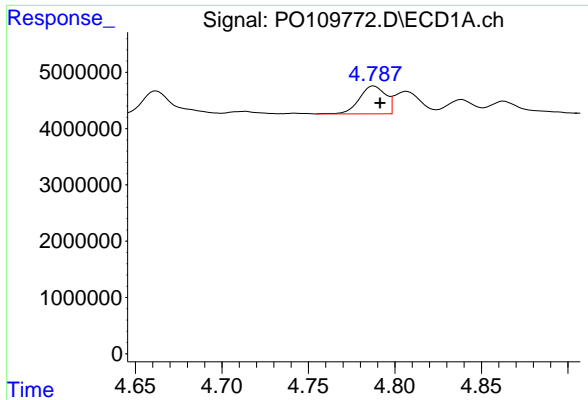
#2 Decachlorobiphenyl

R.T.: 8.749 min  
 Delta R.T.: -0.007 min  
 Response: 354850030  
 Conc: 41.25 ng/ml



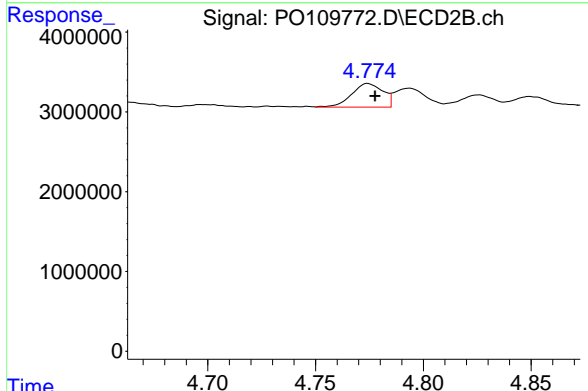
#2 Decachlorobiphenyl

R.T.: 8.701 min  
 Delta R.T.: -0.006 min  
 Response: 138522883  
 Conc: 43.50 ng/ml

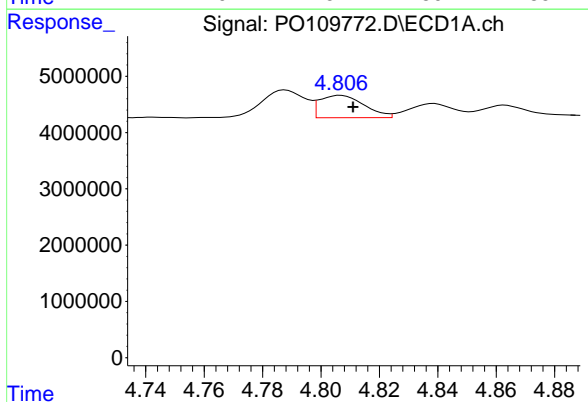


#3 AR-1016-1  
 R.T.: 4.788 min  
 Delta R.T.: -0.004 min  
 Response: 5192285  
 Conc: 16.84 ng/ml

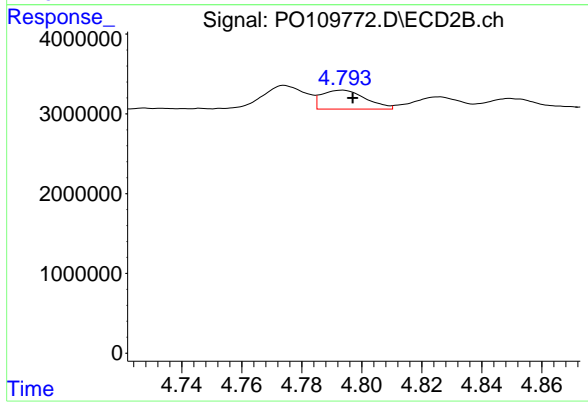
Instrument :  
 ECD\_O  
 ClientSampleId :  
 AR1254CCC500



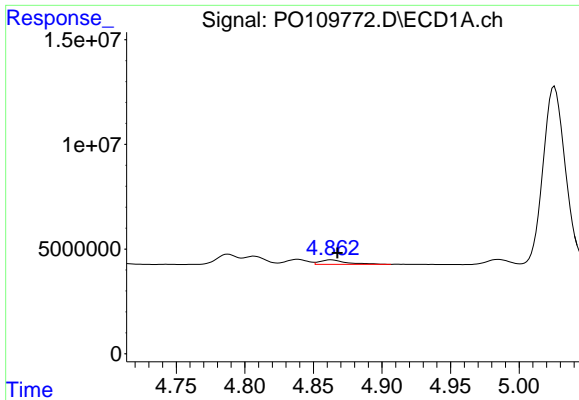
#3 AR-1016-1  
 R.T.: 4.774 min  
 Delta R.T.: -0.003 min  
 Response: 2997936  
 Conc: 19.20 ng/ml



#4 AR-1016-2  
 R.T.: 4.807 min  
 Delta R.T.: -0.004 min  
 Response: 4188307  
 Conc: 9.95 ng/ml



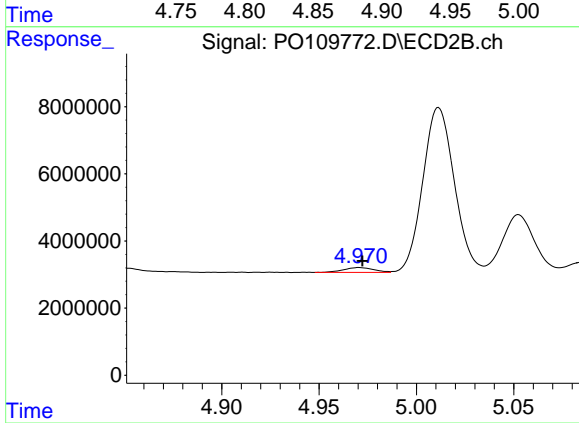
#4 AR-1016-2  
 R.T.: 4.793 min  
 Delta R.T.: -0.004 min  
 Response: 2415756  
 Conc: 11.16 ng/ml



#5 AR-1016-3

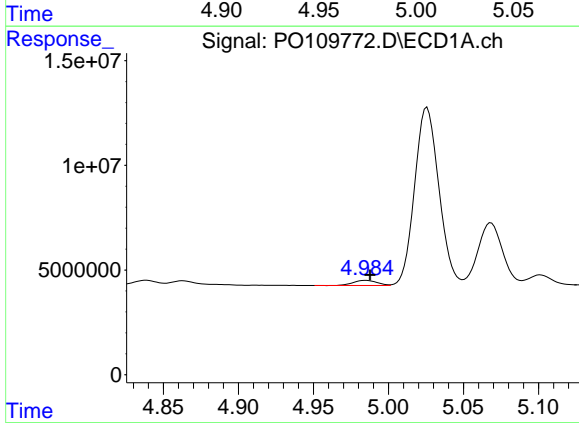
R.T.: 4.863 min  
 Delta R.T.: -0.005 min  
 Response: 2829356  
 Conc: 9.56 ng/ml

Instrument :  
 ECD\_O  
 ClientSampleId :  
 AR1254CCC500



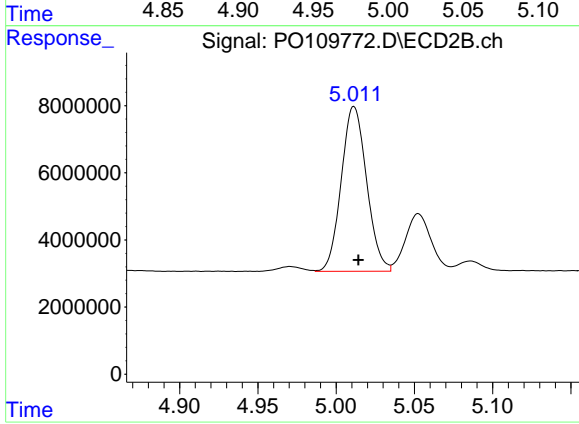
#5 AR-1016-3

R.T.: 4.971 min  
 Delta R.T.: -0.002 min  
 Response: 1553160  
 Conc: 13.00 ng/ml



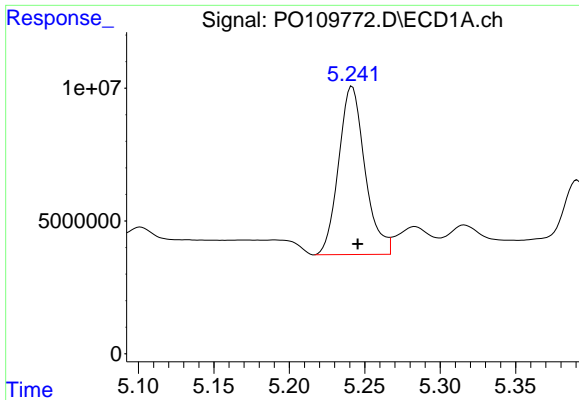
#6 AR-1016-4

R.T.: 4.985 min  
 Delta R.T.: -0.003 min  
 Response: 2667205  
 Conc: 11.51 ng/ml



#6 AR-1016-4

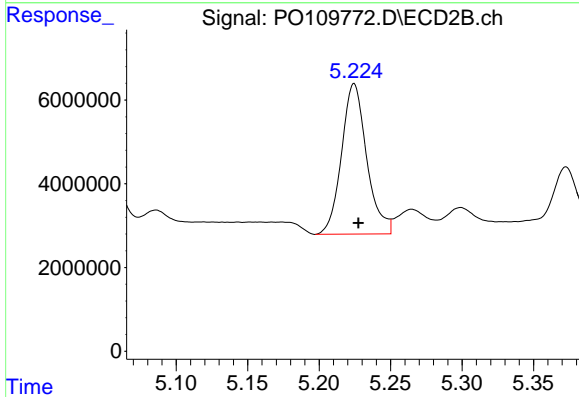
R.T.: 5.011 min  
 Delta R.T.: -0.003 min  
 Response: 55364565  
 Conc: 531.99 ng/ml



#7 AR-1016-5

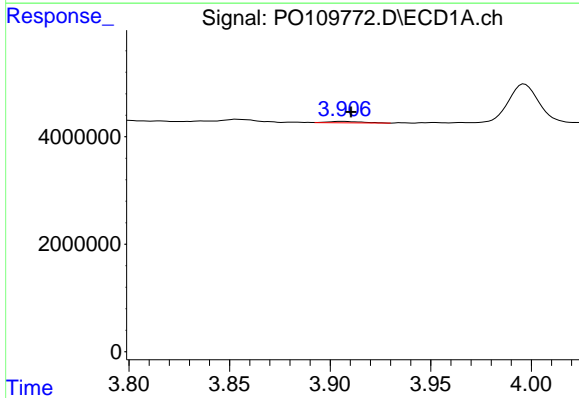
R.T.: 5.242 min  
 Delta R.T.: -0.004 min  
 Response: 76882187  
 Conc: 297.73 ng/ml

Instrument :  
 ECD\_O  
 ClientSampleId :  
 AR1254CCC500



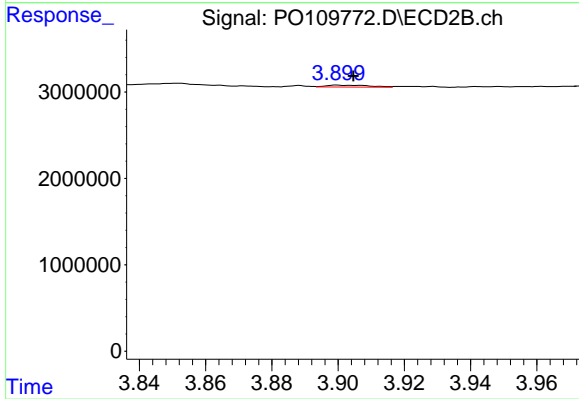
#7 AR-1016-5

R.T.: 5.224 min  
 Delta R.T.: -0.003 min  
 Response: 44074425  
 Conc: 323.47 ng/ml



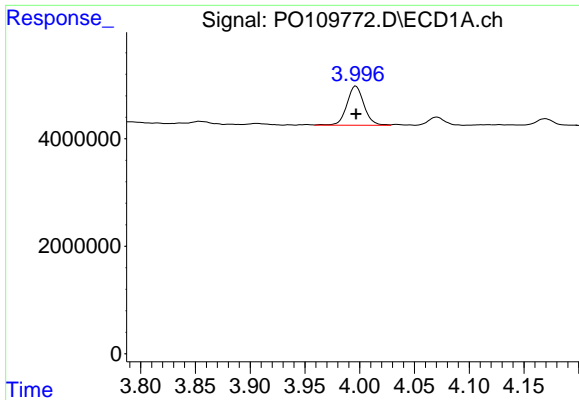
#8 AR-1221-1

R.T.: 3.907 min  
 Delta R.T.: -0.004 min  
 Response: 300844  
 Conc: 2.28 ng/ml



#8 AR-1221-1

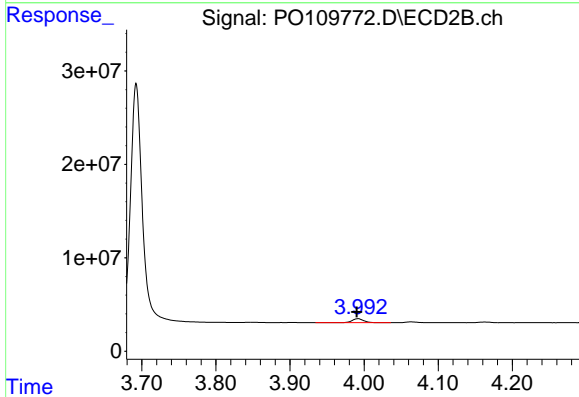
R.T.: 3.900 min  
 Delta R.T.: -0.004 min  
 Response: 202432  
 Conc: 2.96 ng/ml



#9 AR-1221-2

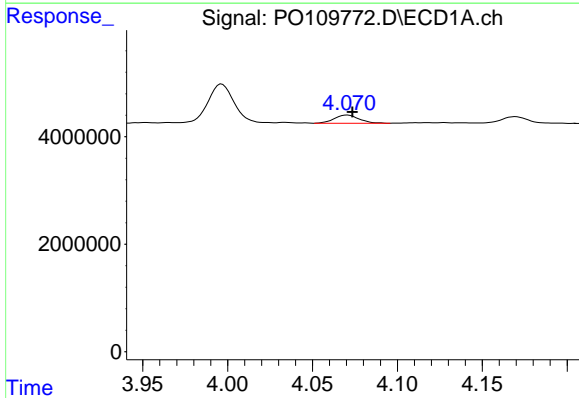
R.T.: 3.997 min  
 Delta R.T.: 0.000 min  
 Response: 7906765  
 Conc: 80.11 ng/ml

Instrument :  
 ECD\_O  
 ClientSampleId :  
 AR1254CCC500



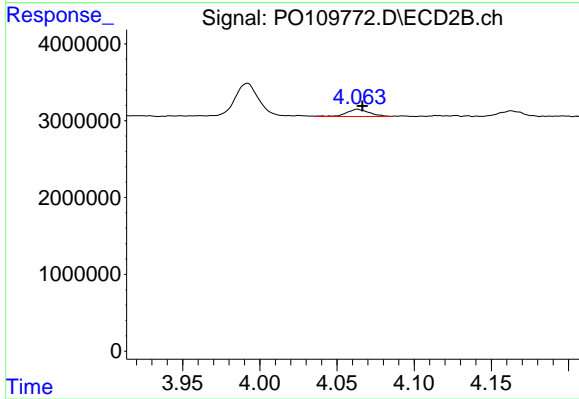
#9 AR-1221-2

R.T.: 3.992 min  
 Delta R.T.: 0.002 min  
 Response: 4899648  
 Conc: 95.44 ng/ml



#10 AR-1221-3

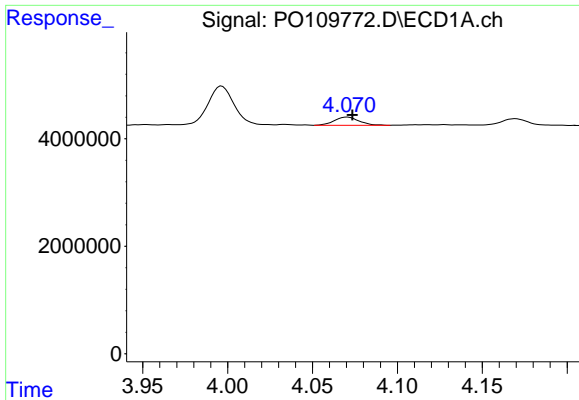
R.T.: 4.071 min  
 Delta R.T.: -0.003 min  
 Response: 1576790  
 Conc: 5.84 ng/ml



#10 AR-1221-3

R.T.: 4.063 min  
 Delta R.T.: -0.003 min  
 Response: 968203  
 Conc: 6.66 ng/ml

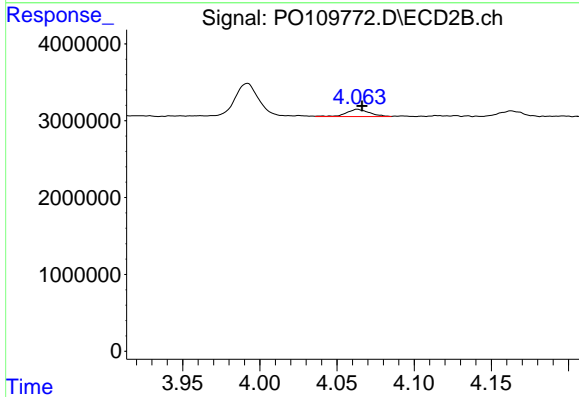




#11 AR-1232-1

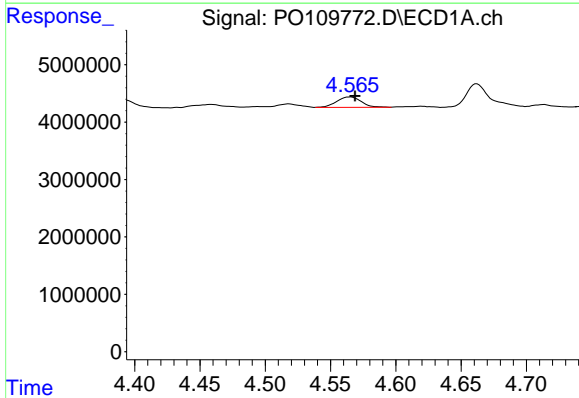
R.T.: 4.071 min  
 Delta R.T.: -0.003 min  
 Response: 1576790  
 Conc: 7.55 ng/ml

Instrument :  
 ECD\_O  
 ClientSampleId :  
 AR1254CCC500



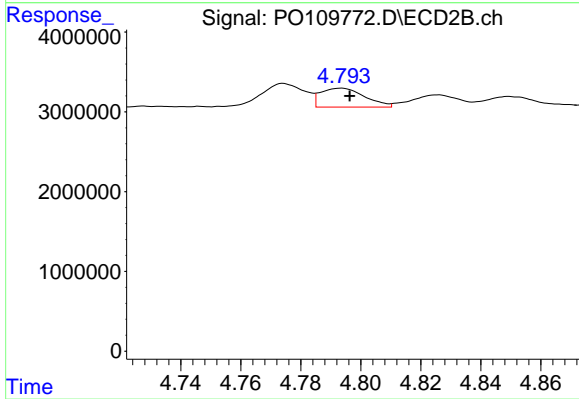
#11 AR-1232-1

R.T.: 4.063 min  
 Delta R.T.: -0.003 min  
 Response: 968203  
 Conc: 8.69 ng/ml



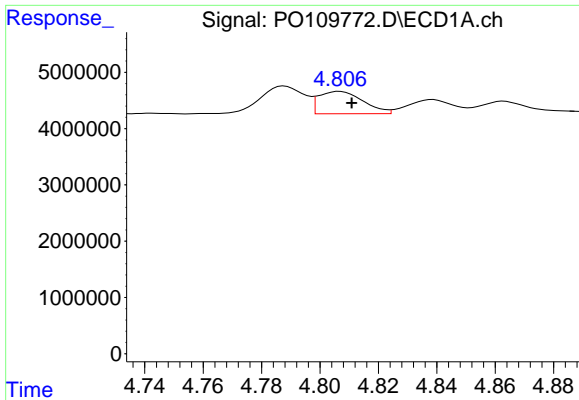
#12 AR-1232-2

R.T.: 4.565 min  
 Delta R.T.: -0.004 min  
 Response: 2349713  
 Conc: 20.24 ng/ml



#12 AR-1232-2

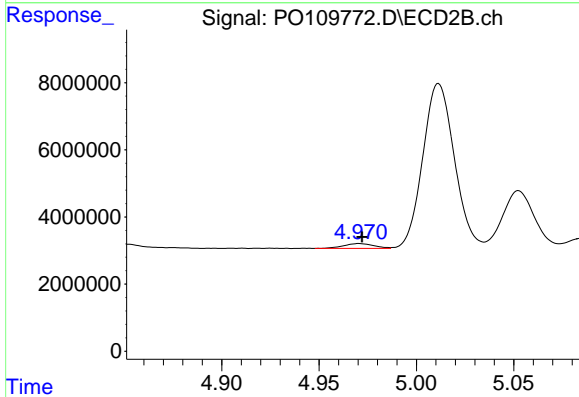
R.T.: 4.793 min  
 Delta R.T.: -0.003 min  
 Response: 2415756  
 Conc: 23.38 ng/ml



#13 AR-1232-3

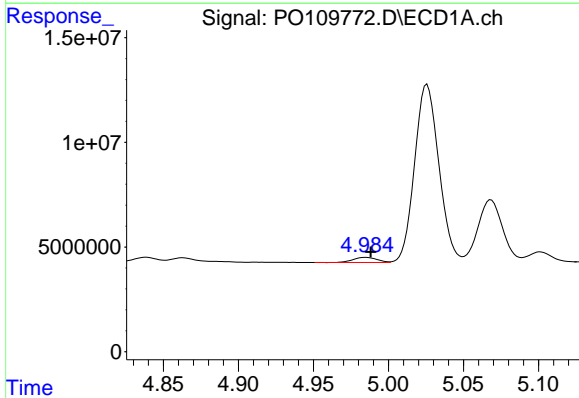
R.T.: 4.807 min  
 Delta R.T.: -0.004 min  
 Response: 4188307  
 Conc: 20.74 ng/ml

Instrument :  
 ECD\_O  
 ClientSampleId :  
 AR1254CCC500



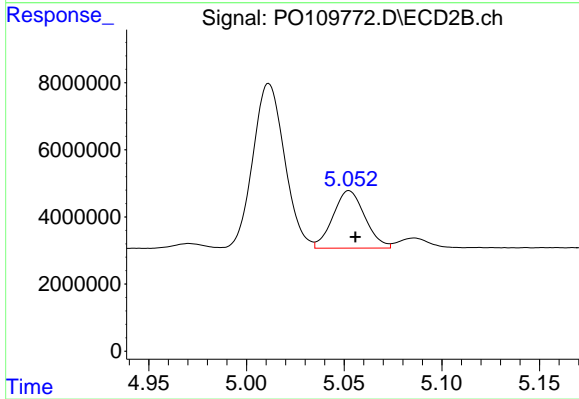
#13 AR-1232-3

R.T.: 4.971 min  
 Delta R.T.: -0.002 min  
 Response: 1553160  
 Conc: 27.36 ng/ml



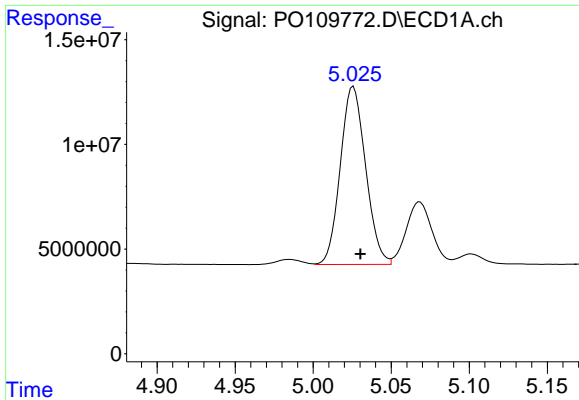
#14 AR-1232-4

R.T.: 4.985 min  
 Delta R.T.: -0.003 min  
 Response: 2667205  
 Conc: 23.98 ng/ml



#14 AR-1232-4

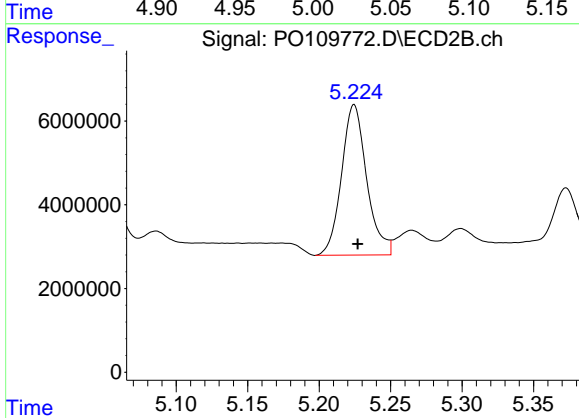
R.T.: 5.053 min  
 Delta R.T.: -0.003 min  
 Response: 19477746  
 Conc: 354.82 ng/ml



#15 AR-1232-5

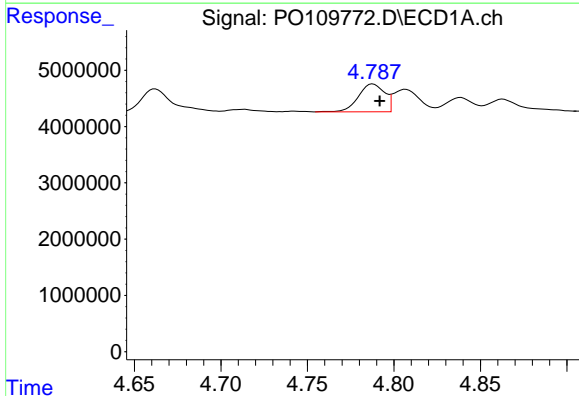
R.T.: 5.026 min  
 Delta R.T.: -0.005 min  
 Response: 95762400  
 Conc: 1172.57 ng/ml

Instrument :  
 ECD\_O  
 ClientSampleId :  
 AR1254CCC500



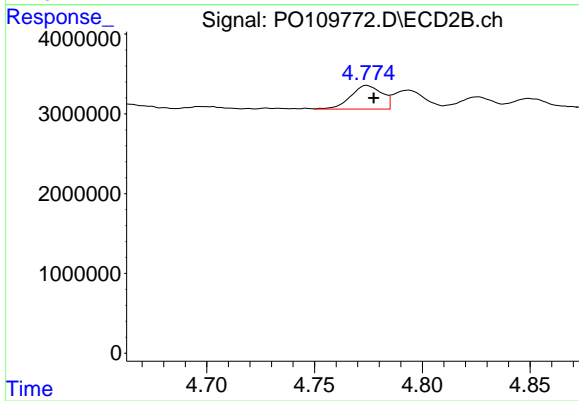
#15 AR-1232-5

R.T.: 5.224 min  
 Delta R.T.: -0.003 min  
 Response: 44074425  
 Conc: 749.50 ng/ml



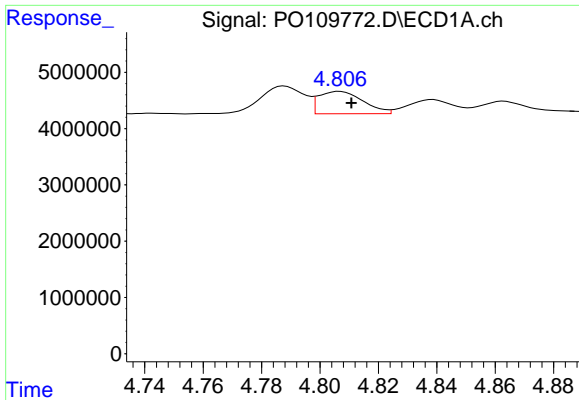
#16 AR-1242-1

R.T.: 4.788 min  
 Delta R.T.: -0.004 min  
 Response: 5192285  
 Conc: 19.84 ng/ml



#16 AR-1242-1

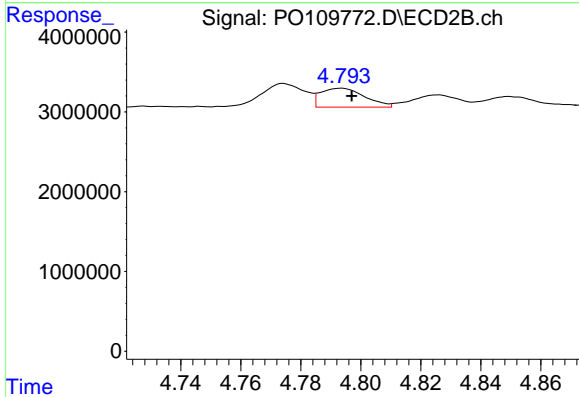
R.T.: 4.774 min  
 Delta R.T.: -0.003 min  
 Response: 2997936  
 Conc: 22.65 ng/ml



#17 AR-1242-2

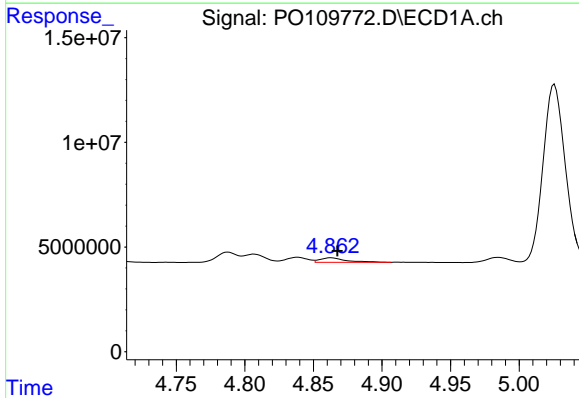
R.T.: 4.807 min  
 Delta R.T.: -0.004 min  
 Response: 4188307  
 Conc: 11.76 ng/ml

Instrument :  
 ECD\_O  
 ClientSampleId :  
 AR1254CCC500



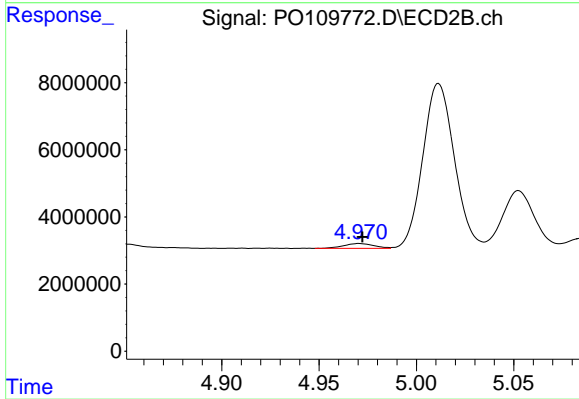
#17 AR-1242-2

R.T.: 4.793 min  
 Delta R.T.: -0.004 min  
 Response: 2415756  
 Conc: 13.31 ng/ml



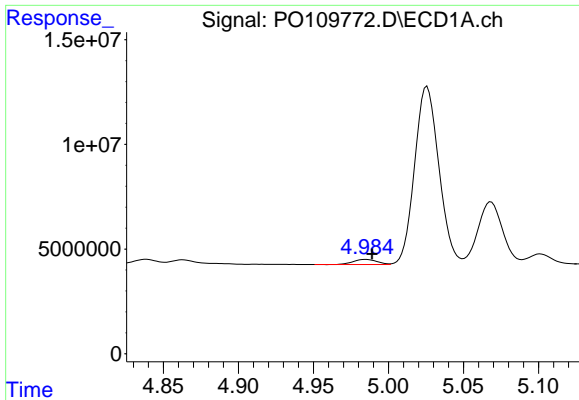
#18 AR-1242-3

R.T.: 4.863 min  
 Delta R.T.: -0.005 min  
 Response: 2829356  
 Conc: 11.26 ng/ml



#18 AR-1242-3

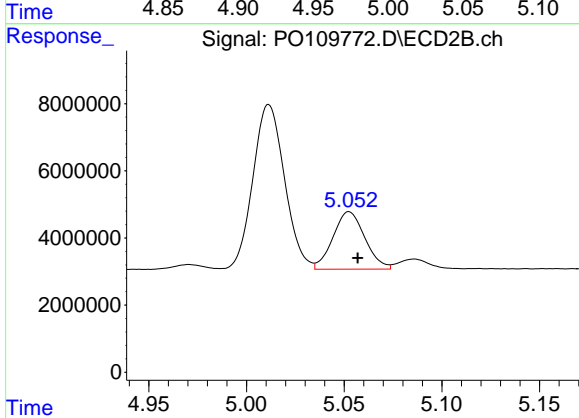
R.T.: 4.971 min  
 Delta R.T.: -0.002 min  
 Response: 1553160  
 Conc: 15.55 ng/ml



#19 AR-1242-4

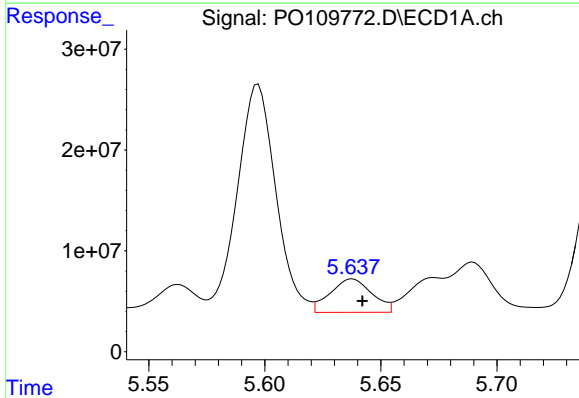
R.T.: 4.985 min  
 Delta R.T.: -0.004 min  
 Response: 2667205  
 Conc: 13.58 ng/ml

Instrument :  
 ECD\_O  
 ClientSampleId :  
 AR1254CCC500



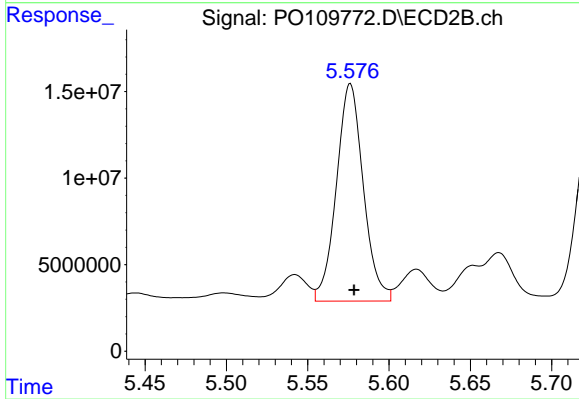
#19 AR-1242-4

R.T.: 5.053 min  
 Delta R.T.: -0.004 min  
 Response: 19477746  
 Conc: 182.17 ng/ml



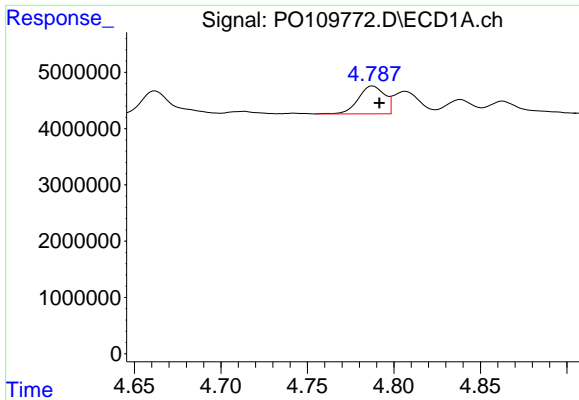
#20 AR-1242-5

R.T.: 5.638 min  
 Delta R.T.: -0.004 min  
 Response: 41518433  
 Conc: 193.67 ng/ml



#20 AR-1242-5

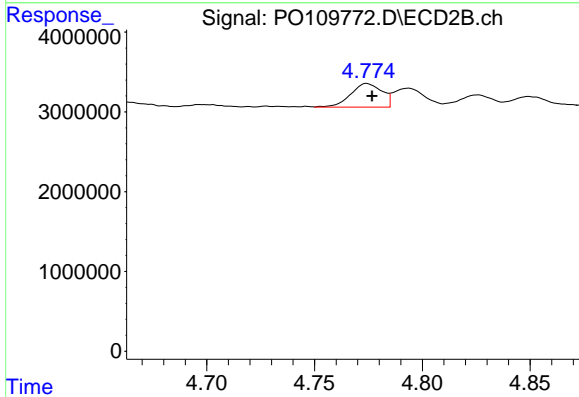
R.T.: 5.576 min  
 Delta R.T.: -0.002 min  
 Response: 144897232  
 Conc: 1152.67 ng/ml



#21 AR-1248-1

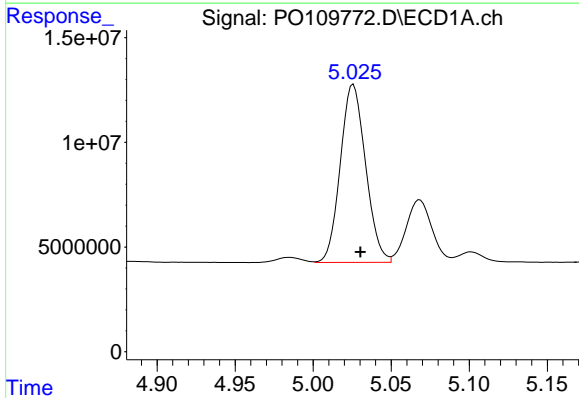
R.T.: 4.788 min  
 Delta R.T.: -0.004 min  
 Response: 5192285  
 Conc: 26.03 ng/ml

Instrument :  
 ECD\_O  
 ClientSampleId :  
 AR1254CCC500



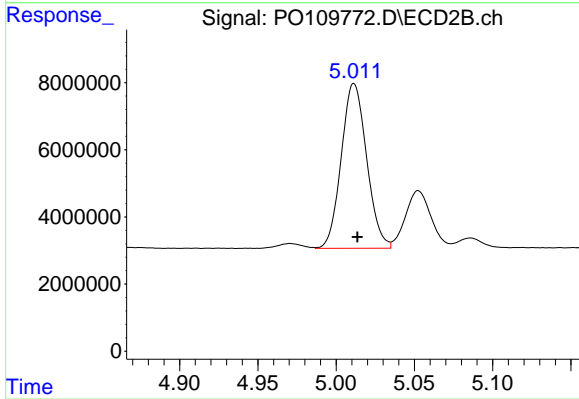
#21 AR-1248-1

R.T.: 4.774 min  
 Delta R.T.: -0.002 min  
 Response: 2997936  
 Conc: 29.82 ng/ml



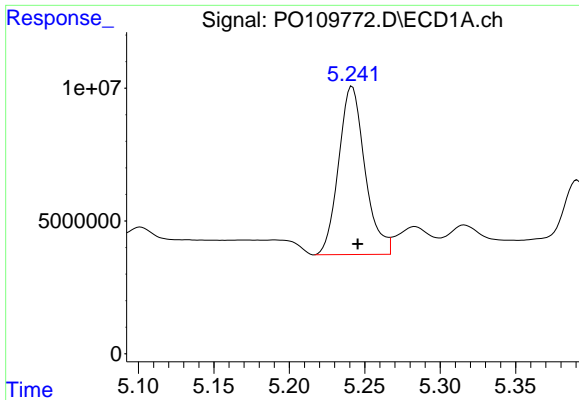
#22 AR-1248-2

R.T.: 5.026 min  
 Delta R.T.: -0.004 min  
 Response: 95762400  
 Conc: 344.11 ng/ml



#22 AR-1248-2

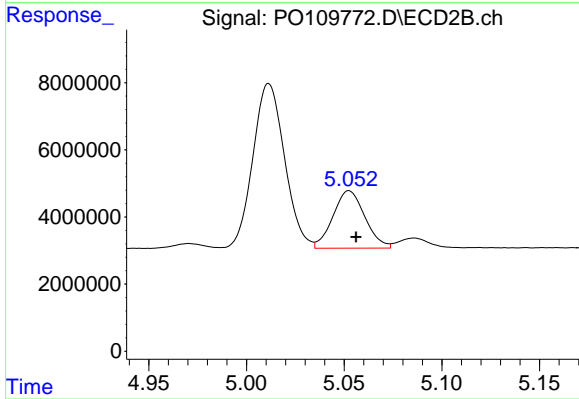
R.T.: 5.011 min  
 Delta R.T.: -0.002 min  
 Response: 55364565  
 Conc: 380.57 ng/ml



#23 AR-1248-3

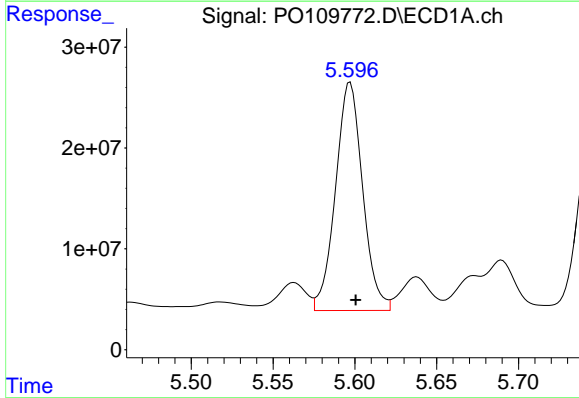
R.T.: 5.242 min  
 Delta R.T.: -0.004 min  
 Response: 76882187  
 Conc: 220.06 ng/ml

Instrument :  
 ECD\_O  
 ClientSampleId :  
 AR1254CCC500



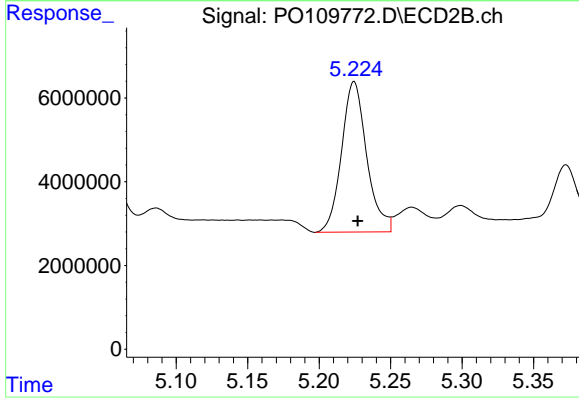
#23 AR-1248-3

R.T.: 5.053 min  
 Delta R.T.: -0.003 min  
 Response: 19477746  
 Conc: 125.66 ng/ml



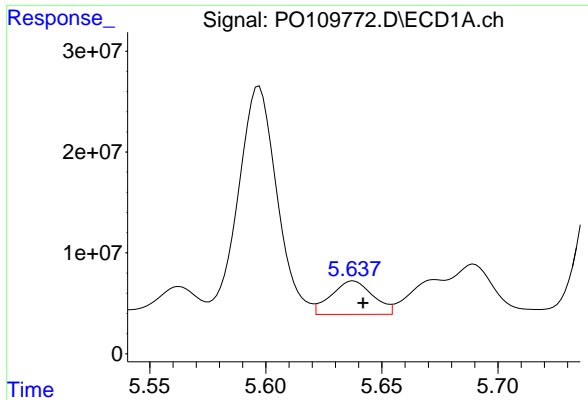
#24 AR-1248-4

R.T.: 5.597 min  
 Delta R.T.: -0.003 min  
 Response: 260718918  
 Conc: 546.47 ng/ml



#24 AR-1248-4

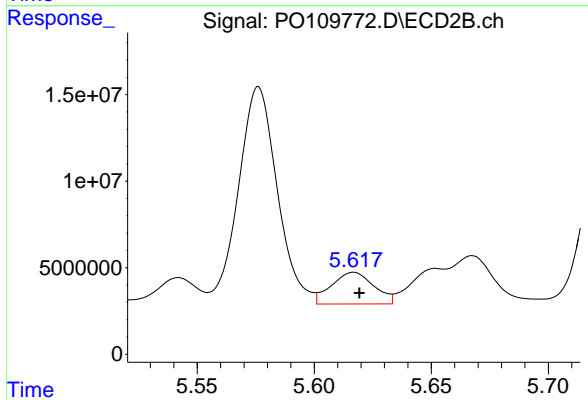
R.T.: 5.224 min  
 Delta R.T.: -0.003 min  
 Response: 44074425  
 Conc: 243.78 ng/ml



#25 AR-1248-5

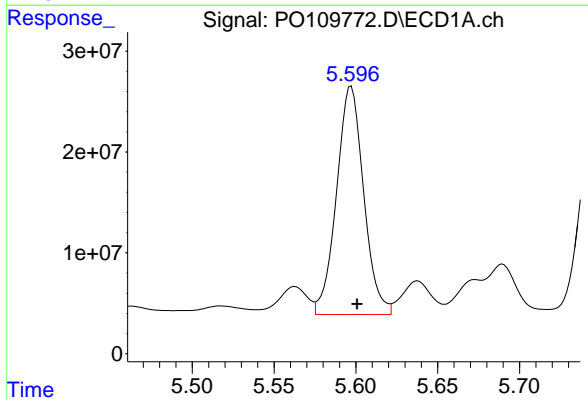
R.T.: 5.638 min  
 Delta R.T.: -0.004 min  
 Response: 41518433  
 Conc: 121.22 ng/ml

Instrument :  
 ECD\_O  
 ClientSampleId :  
 AR1254CCC500



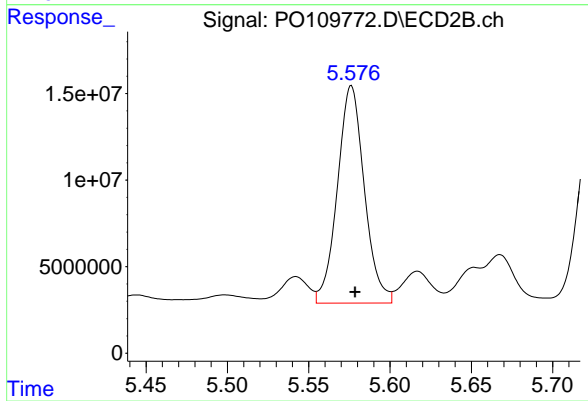
#25 AR-1248-5

R.T.: 5.617 min  
 Delta R.T.: -0.002 min  
 Response: 23122292  
 Conc: 134.27 ng/ml



#26 AR-1254-1

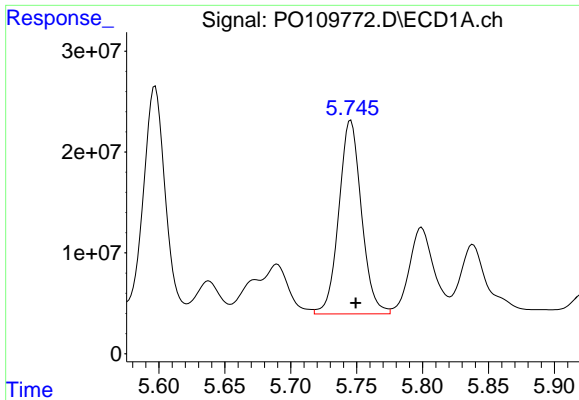
R.T.: 5.597 min  
 Delta R.T.: -0.004 min  
 Response: 260718918  
 Conc: 505.65 ng/ml



#26 AR-1254-1

R.T.: 5.576 min  
 Delta R.T.: -0.002 min  
 Response: 144897232  
 Conc: 554.02 ng/ml

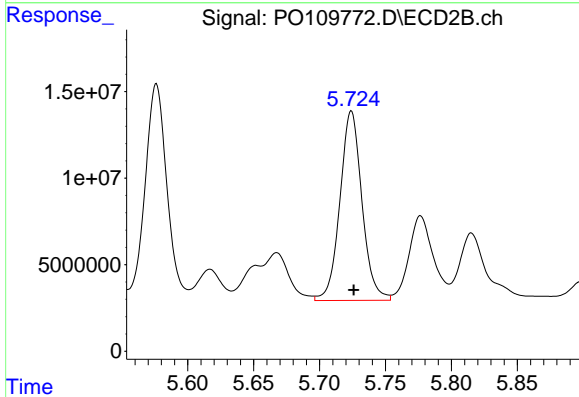




#27 AR-1254-2

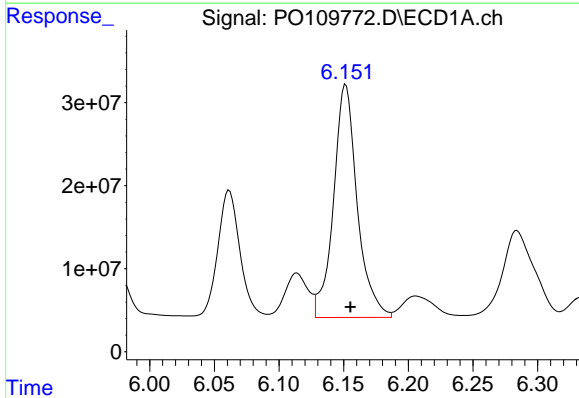
R.T.: 5.746 min  
 Delta R.T.: -0.004 min  
 Response: 229404555  
 Conc: 509.36 ng/ml

Instrument :  
 ECD\_O  
 ClientSampleId :  
 AR1254CCC500



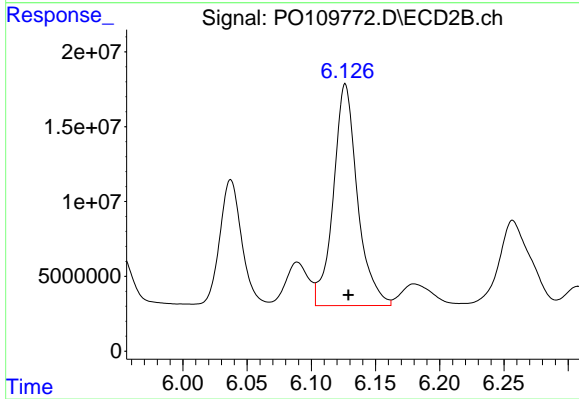
#27 AR-1254-2

R.T.: 5.724 min  
 Delta R.T.: -0.002 min  
 Response: 127472605  
 Conc: 543.45 ng/ml



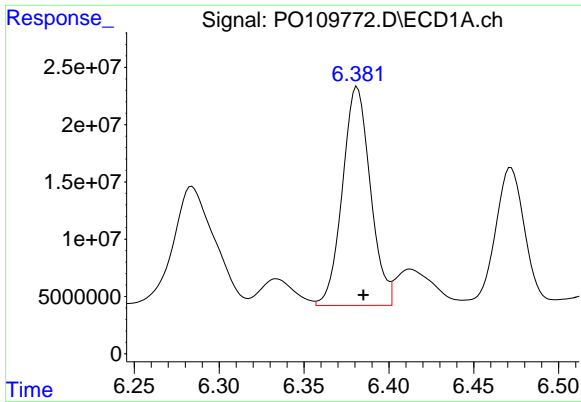
#28 AR-1254-3

R.T.: 6.152 min  
 Delta R.T.: -0.004 min  
 Response: 359013575  
 Conc: 501.45 ng/ml



#28 AR-1254-3

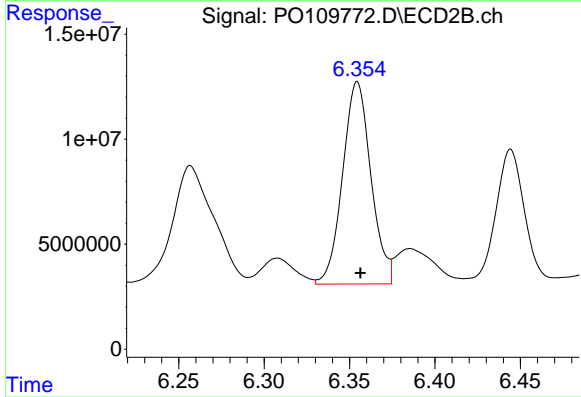
R.T.: 6.127 min  
 Delta R.T.: -0.002 min  
 Response: 193740047  
 Conc: 543.14 ng/ml



#29 AR-1254-4

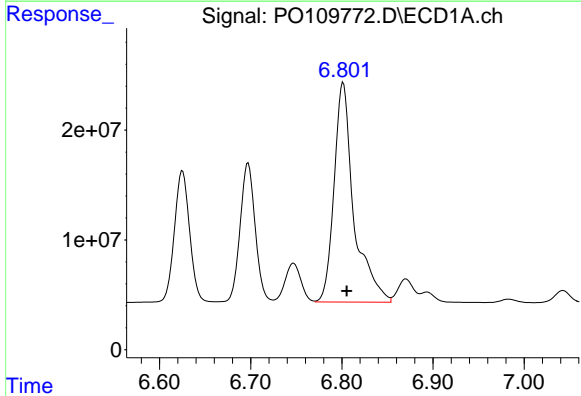
R.T.: 6.381 min  
 Delta R.T.: -0.004 min  
 Response: 218431740  
 Conc: 521.58 ng/ml

Instrument :  
 ECD\_O  
 ClientSampleId :  
 AR1254CCC500



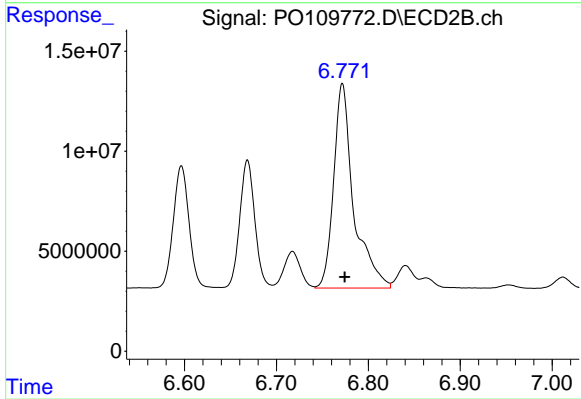
#29 AR-1254-4

R.T.: 6.355 min  
 Delta R.T.: -0.002 min  
 Response: 111106985  
 Conc: 575.32 ng/ml



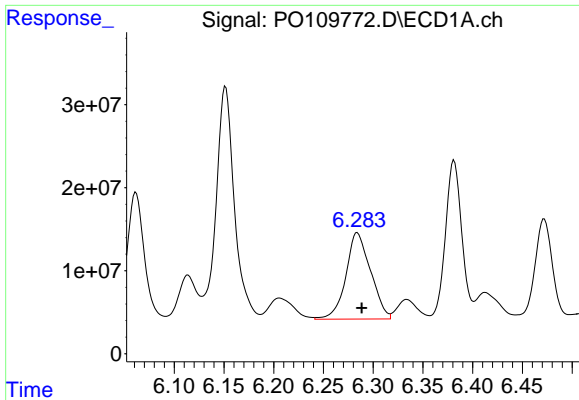
#30 AR-1254-5

R.T.: 6.801 min  
 Delta R.T.: -0.004 min  
 Response: 301396377  
 Conc: 483.08 ng/ml



#30 AR-1254-5

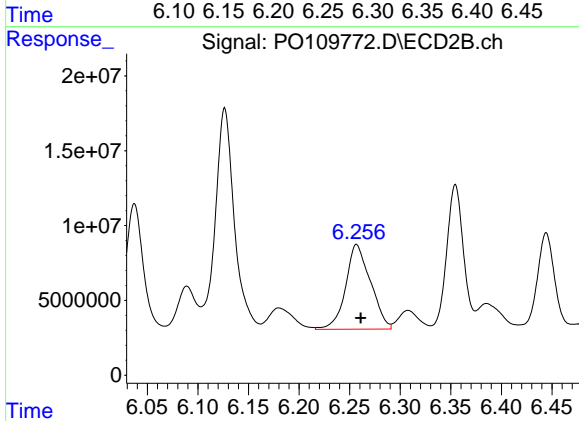
R.T.: 6.772 min  
 Delta R.T.: -0.003 min  
 Response: 154495067  
 Conc: 520.65 ng/ml



#31 AR-1260-1

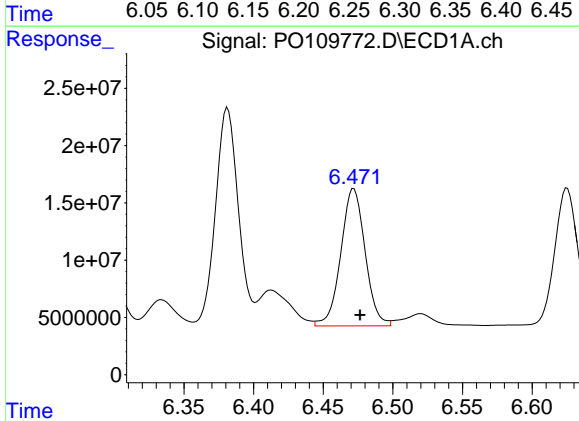
R.T.: 6.284 min  
 Delta R.T.: -0.004 min  
 Response: 179828470  
 Conc: 385.79 ng/ml

Instrument :  
 ECD\_O  
 ClientSampleId :  
 AR1254CCC500



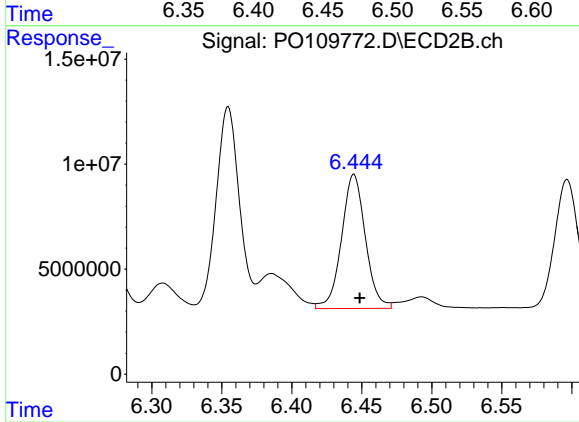
#31 AR-1260-1

R.T.: 6.257 min  
 Delta R.T.: -0.004 min  
 Response: 96702729  
 Conc: 408.17 ng/ml



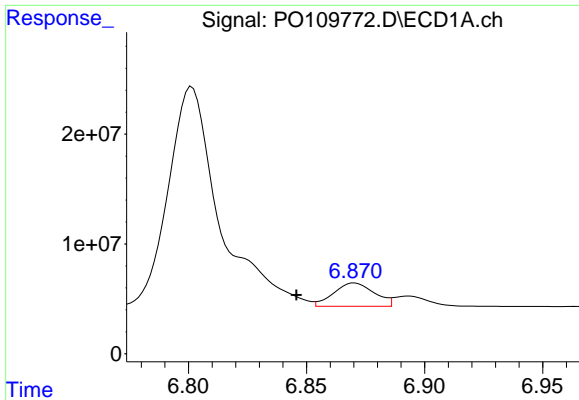
#32 AR-1260-2

R.T.: 6.472 min  
 Delta R.T.: -0.005 min  
 Response: 145854806  
 Conc: 258.10 ng/ml



#32 AR-1260-2

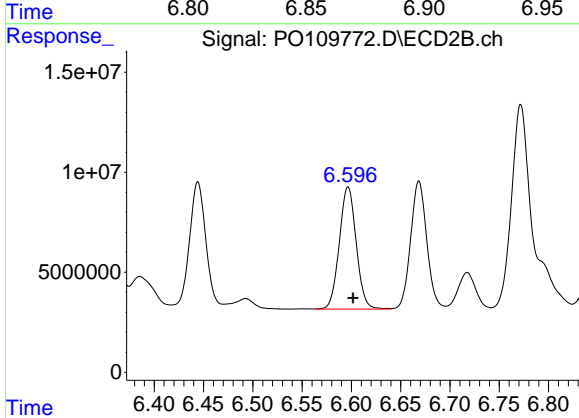
R.T.: 6.444 min  
 Delta R.T.: -0.004 min  
 Response: 75615560  
 Conc: 274.79 ng/ml



#33 AR-1260-3

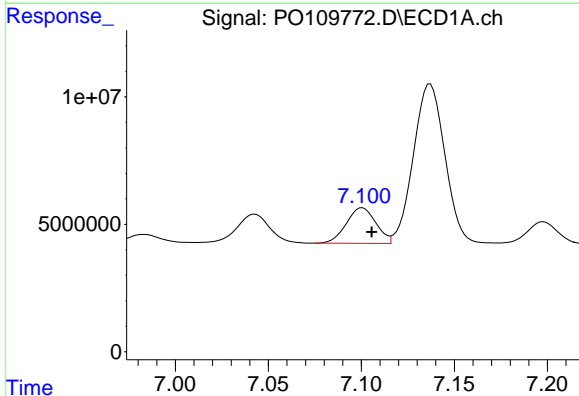
R.T.: 6.870 min  
 Delta R.T.: 0.025 min  
 Response: 25428507  
 Conc: 53.46 ng/ml

Instrument :  
 ECD\_O  
 ClientSampleId :  
 AR1254CCC500



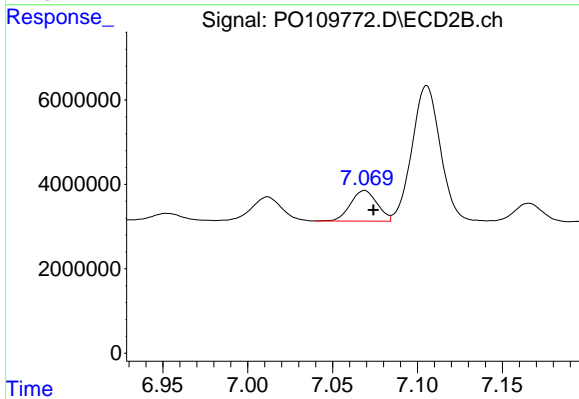
#33 AR-1260-3

R.T.: 6.597 min  
 Delta R.T.: -0.005 min  
 Response: 72862711  
 Conc: 285.66 ng/ml



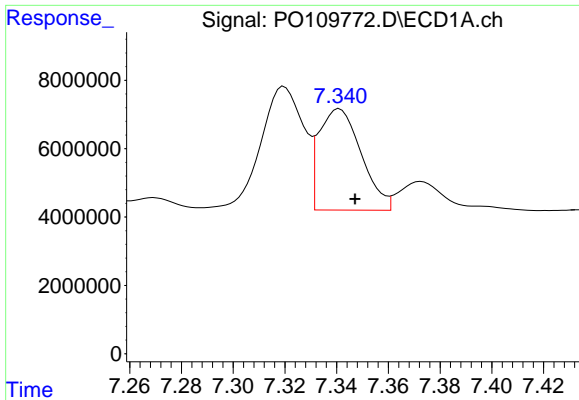
#34 AR-1260-4

R.T.: 7.101 min  
 Delta R.T.: -0.005 min  
 Response: 15405558  
 Conc: 35.69 ng/ml



#34 AR-1260-4

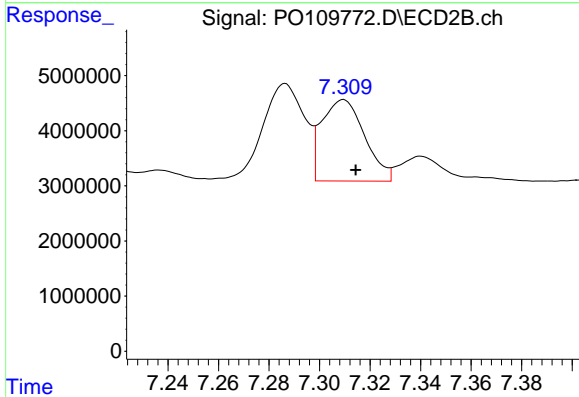
R.T.: 7.069 min  
 Delta R.T.: -0.005 min  
 Response: 7956473  
 Conc: 38.59 ng/ml



#35 AR-1260-5

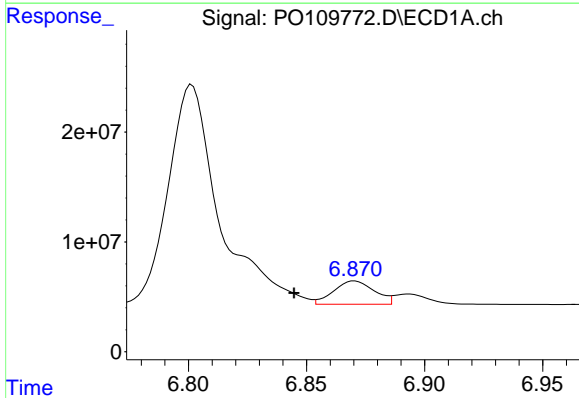
R.T.: 7.341 min  
 Delta R.T.: -0.006 min  
 Response: 33607822  
 Conc: 33.81 ng/ml

Instrument :  
 ECD\_O  
 ClientSampleId :  
 AR1254CCC500



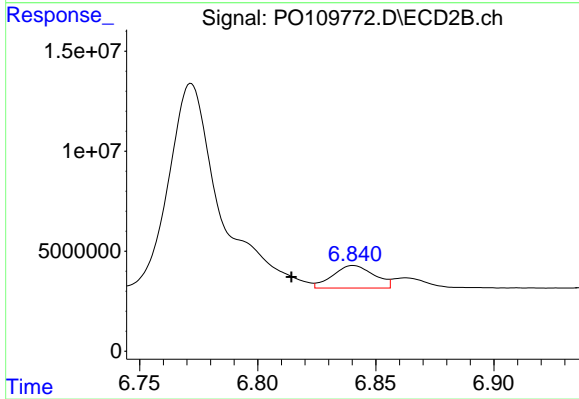
#35 AR-1260-5

R.T.: 7.309 min  
 Delta R.T.: -0.005 min  
 Response: 17399446  
 Conc: 38.86 ng/ml



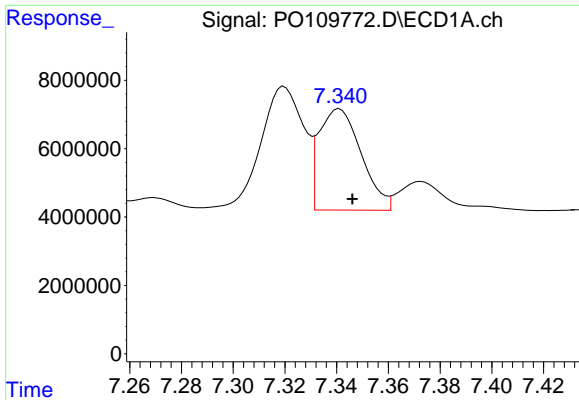
#36 AR-1262-1

R.T.: 6.870 min  
 Delta R.T.: 0.026 min  
 Response: 25428507  
 Conc: 38.19 ng/ml



#36 AR-1262-1

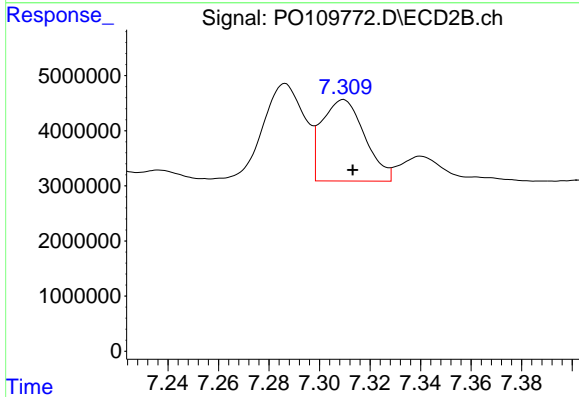
R.T.: 6.841 min  
 Delta R.T.: 0.026 min  
 Response: 13736218  
 Conc: 43.30 ng/ml



#37 AR-1262-2

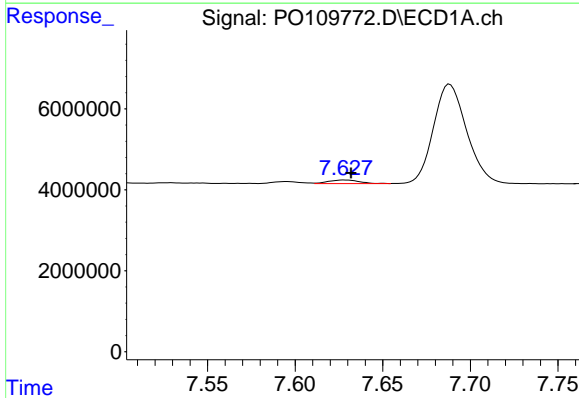
R.T.: 7.341 min  
 Delta R.T.: -0.005 min  
 Response: 33607822  
 Conc: 29.75 ng/ml

Instrument :  
 ECD\_O  
 ClientSampleId :  
 AR1254CCC500



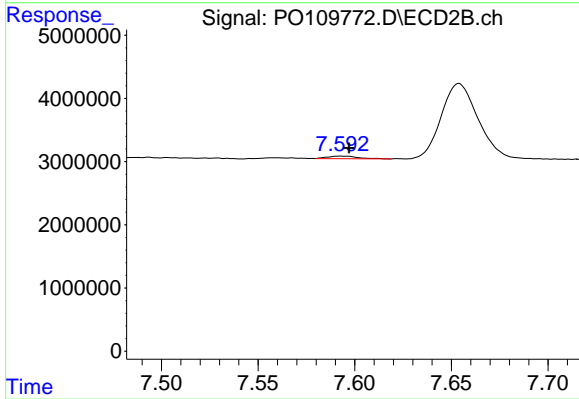
#37 AR-1262-2

R.T.: 7.309 min  
 Delta R.T.: -0.004 min  
 Response: 17399446  
 Conc: 34.90 ng/ml



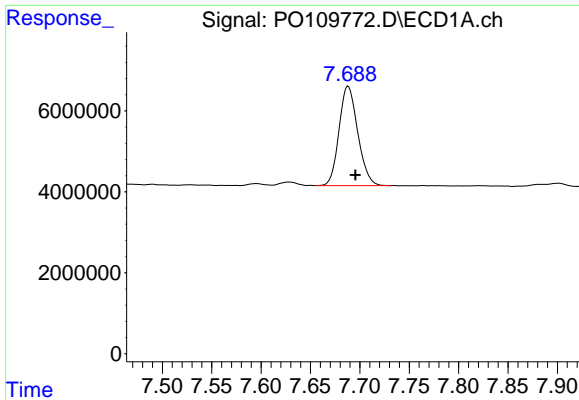
#38 AR-1262-3

R.T.: 7.629 min  
 Delta R.T.: -0.003 min  
 Response: 1050817  
 Conc: 2.34 ng/ml



#38 AR-1262-3

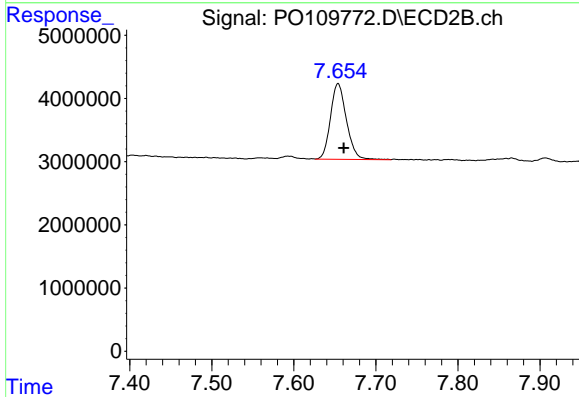
R.T.: 7.593 min  
 Delta R.T.: -0.005 min  
 Response: 463865  
 Conc: 2.36 ng/ml



#39 AR-1262-4

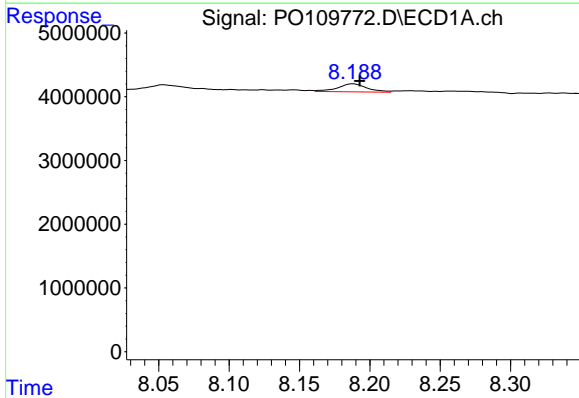
R.T.: 7.688 min  
 Delta R.T.: -0.007 min  
 Response: 32418905  
 Conc: 39.10 ng/ml

Instrument :  
 ECD\_O  
 ClientSampleId :  
 AR1254CCC500



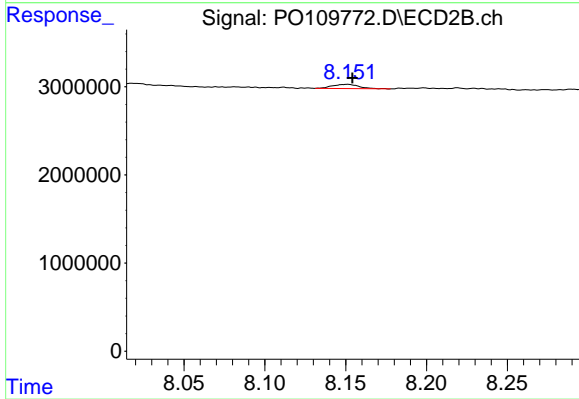
#39 AR-1262-4

R.T.: 7.654 min  
 Delta R.T.: -0.007 min  
 Response: 16164160  
 Conc: 45.55 ng/ml



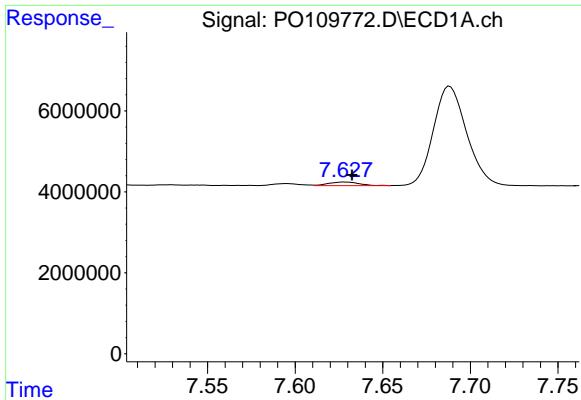
#40 AR-1262-5

R.T.: 8.188 min  
 Delta R.T.: -0.005 min  
 Response: 1862970  
 Conc: 4.99 ng/ml



#40 AR-1262-5

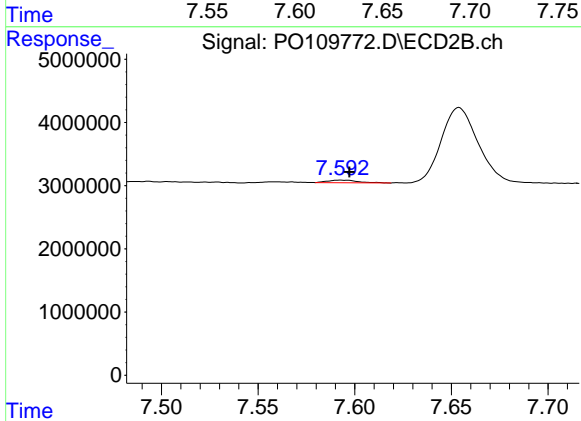
R.T.: 8.151 min  
 Delta R.T.: -0.003 min  
 Response: 540130  
 Conc: 3.77 ng/ml



#41 AR-1268-1

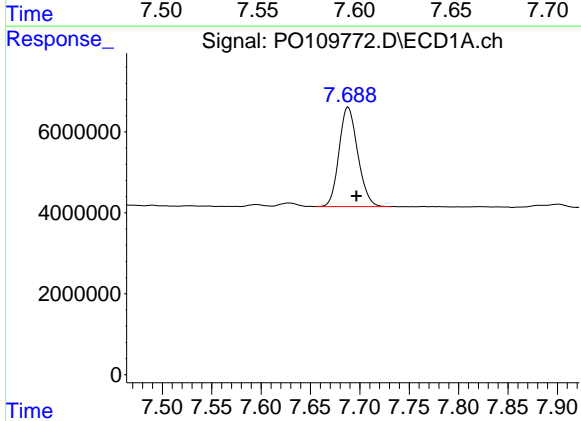
R.T.: 7.629 min  
 Delta R.T.: -0.004 min  
 Response: 1050817  
 Conc: 0.79 ng/ml

Instrument :  
 ECD\_O  
 ClientSampleId :  
 AR1254CCC500



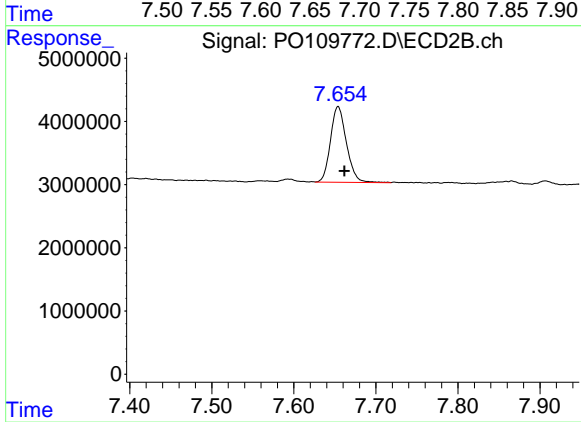
#41 AR-1268-1

R.T.: 7.593 min  
 Delta R.T.: -0.005 min  
 Response: 463865  
 Conc: 0.81 ng/ml



#42 AR-1268-2

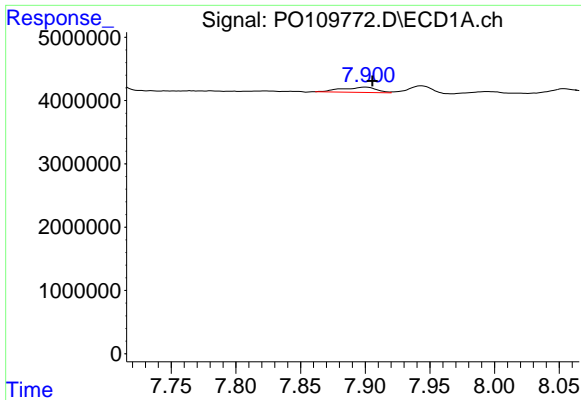
R.T.: 7.688 min  
 Delta R.T.: -0.008 min  
 Response: 32418905  
 Conc: 26.81 ng/ml



#42 AR-1268-2

R.T.: 7.654 min  
 Delta R.T.: -0.008 min  
 Response: 16164160  
 Conc: 30.79 ng/ml

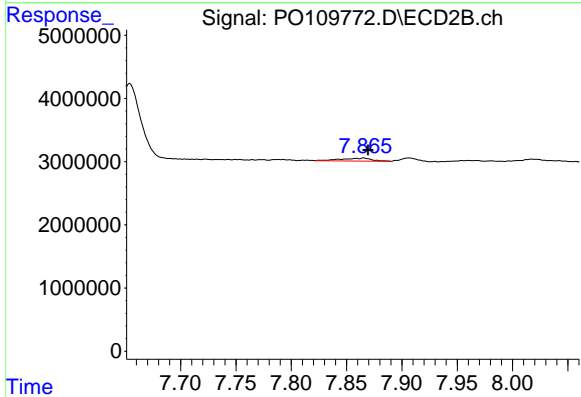




#43 AR-1268-3

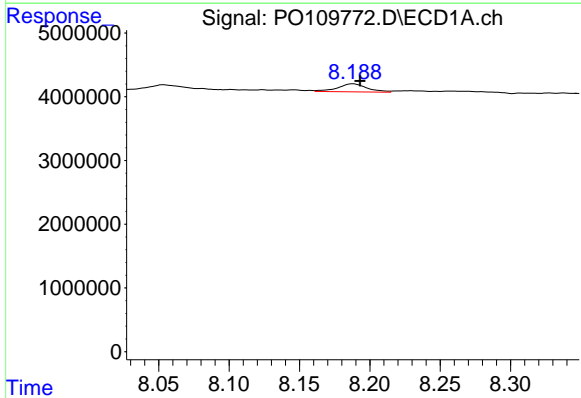
R.T.: 7.901 min  
 Delta R.T.: -0.005 min  
 Response: 1523208  
 Conc: 1.50 ng/ml

Instrument :  
 ECD\_O  
 ClientSampleId :  
 AR1254CCC500



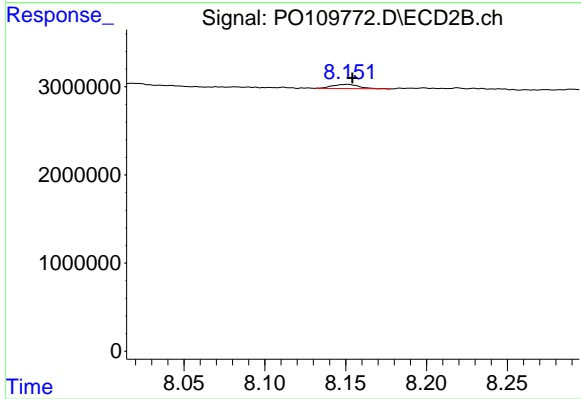
#43 AR-1268-3

R.T.: 7.866 min  
 Delta R.T.: -0.004 min  
 Response: 918016  
 Conc: 2.14 ng/ml



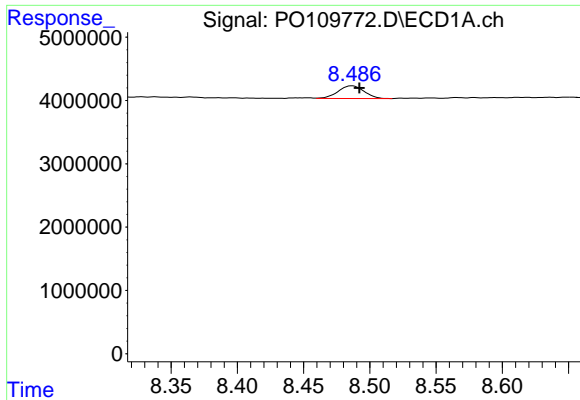
#44 AR-1268-4

R.T.: 8.188 min  
 Delta R.T.: -0.005 min  
 Response: 1862970  
 Conc: 4.38 ng/ml



#44 AR-1268-4

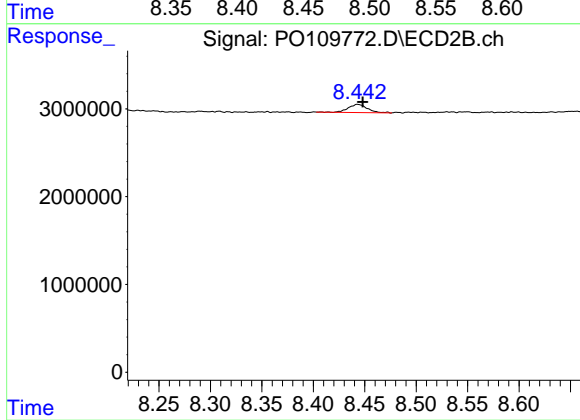
R.T.: 8.151 min  
 Delta R.T.: -0.003 min  
 Response: 540130  
 Conc: 3.35 ng/ml



#45 AR-1268-5

R.T.: 8.487 min  
Delta R.T.: -0.005 min  
Response: 2730786  
Conc: 0.90 ng/ml

Instrument :  
ECD\_O  
ClientSampleId :  
AR1254CCC500



#45 AR-1268-5

R.T.: 8.443 min  
Delta R.T.: -0.005 min  
Response: 1212912  
Conc: 1.11 ng/ml