

Data Path : Z:\pestpcbsrv\HPCHEM1\ECD_0\Data\P0031125\
 Data File : P0109797.D
 Signal(s) : Signal #1: ECD1A.ch Signal #2: ECD2B.ch
 Acq On : 11 Mar 2025 19:24
 Operator : YP/AJ
 Sample : Q1537-02
 Misc :
 ALS Vial : 19 Sample Multiplier: 1

Instrument :
 ECD_0
 ClientSampleId :
 COMP-2

Integration File signal 1: autoint1.e
 Integration File signal 2: autoint2.e
 Quant Time: Mar 11 21:36:47 2025
 Quant Method : Z:\pestpcbsrv\HPCHEM1\ECD_0\methods\P0022025.M
 Quant Title : GC EXTRACTABLES
 QLast Update : Fri Feb 21 04:40:23 2025
 Response via : Initial Calibration
 Integrator: ChemStation

Volume Inj. : 2 µl
 Signal #1 Phase : ZB-MR1 Signal #2 Phase: ZB-MR2
 Signal #1 Info : 30Mx0.32mmx 0.50µ Signal #2 Info : 30M x 0.32mm x 0.25µm

Compound	RT#1	RT#2	Resp#1	Resp#2	ng/ml	ng/ml

System Monitoring Compounds						
1) SA Tetrachlo...	3.695	3.693	233.5E6	132.8E6	24.666	25.378
2) SA Decachlor...	8.750	8.702	173.0E6	68193552	20.110	21.416

Target Compounds

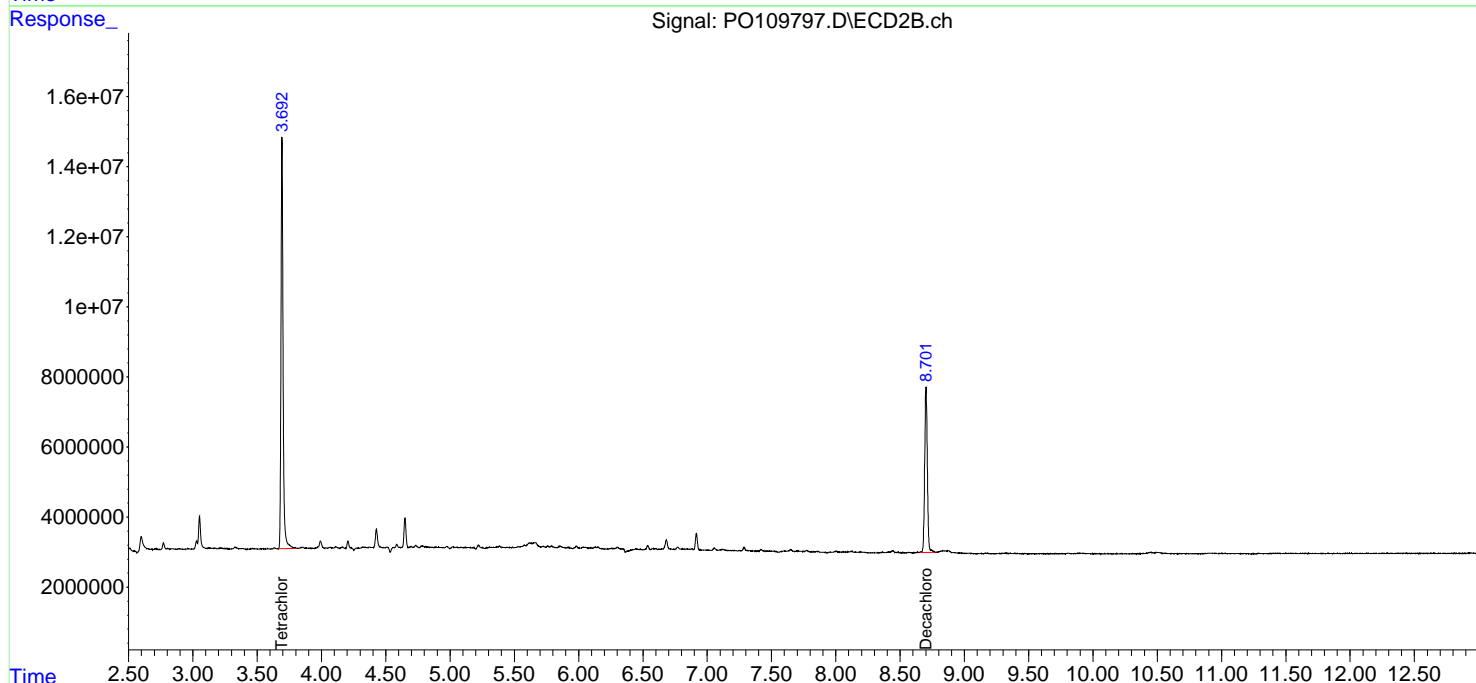
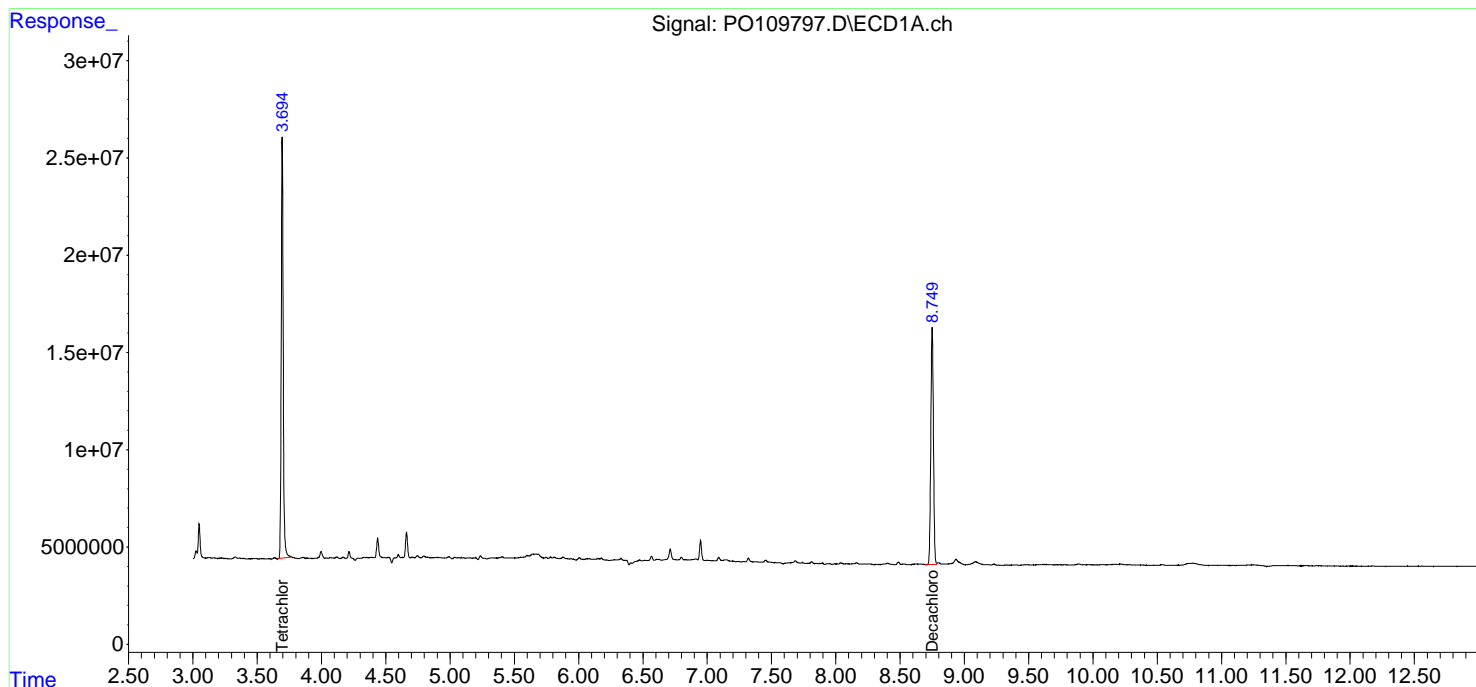
(f)=RT Delta > 1/2 Window (#)=Amounts differ by > 25% (m)=manual int.

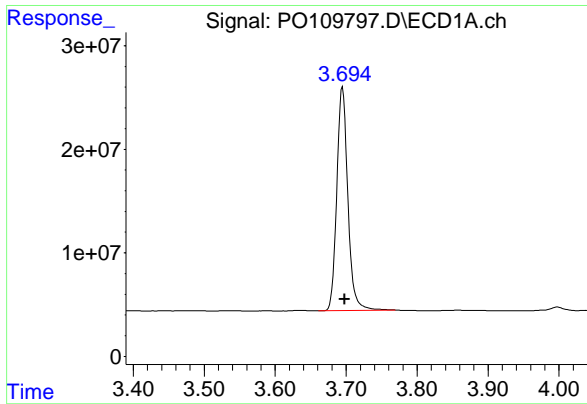
Data Path : Z:\pestpcbsrv\HPCHEM1\ECD_O\Data\PO031125\
 Data File : PO109797.D
 Signal(s) : Signal #1: ECD1A.ch Signal #2: ECD2B.ch
 Acq On : 11 Mar 2025 19:24
 Operator : YP/AJ
 Sample : Q1537-02
 Misc :
 ALS Vial : 19 Sample Multiplier: 1

Instrument :
 ECD_O
 ClientSampleId :
 COMP-2

Integration File signal 1: autoint1.e
 Integration File signal 2: autoint2.e
 Quant Time: Mar 11 21:36:47 2025
 Quant Method : Z:\pestpcbsrv\HPCHEM1\ECD_O\methods\PO022025.M
 Quant Title : GC EXTRACTABLES
 QLast Update : Fri Feb 21 04:40:23 2025
 Response via : Initial Calibration
 Integrator: ChemStation

Volume Inj. : 2 µl
 Signal #1 Phase : ZB-MR1 Signal #2 Phase: ZB-MR2
 Signal #1 Info : 30Mx0.32mmx 0.50µ Signal #2 Info : 30M x 0.32mm x 0.25µm

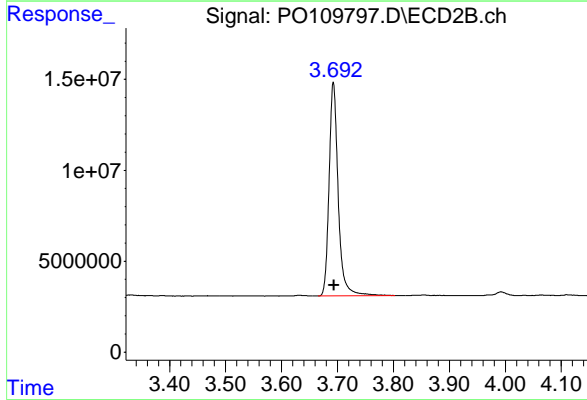




#1 Tetrachloro-m-xylene

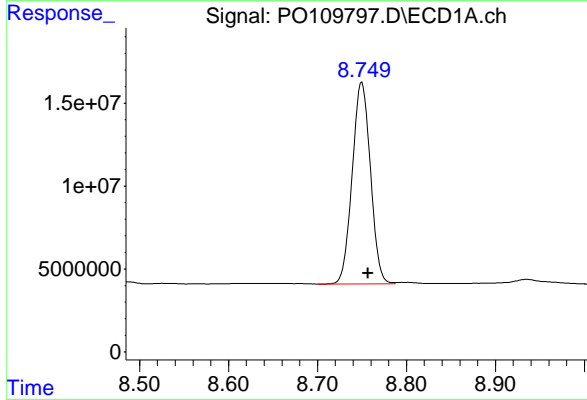
R.T.: 3.695 min
 Delta R.T.: -0.003 min
 Response: 233463271
 Conc: 24.67 ng/ml

Instrument :
 ECD_0
 ClientSampleId :
 COMP-2



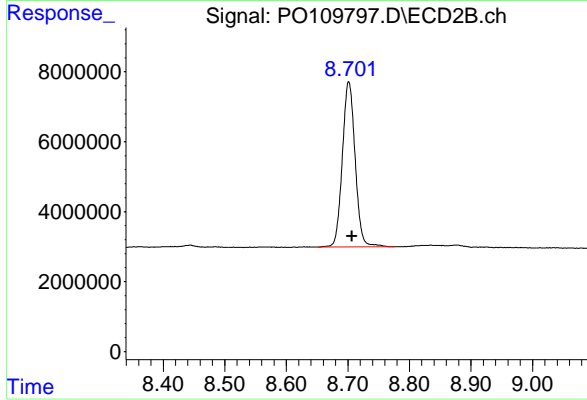
#1 Tetrachloro-m-xylene

R.T.: 3.693 min
 Delta R.T.: -0.001 min
 Response: 132833596
 Conc: 25.38 ng/ml



#2 Decachlorobiphenyl

R.T.: 8.750 min
 Delta R.T.: -0.007 min
 Response: 172983705
 Conc: 20.11 ng/ml



#2 Decachlorobiphenyl

R.T.: 8.702 min
 Delta R.T.: -0.005 min
 Response: 68193552
 Conc: 21.42 ng/ml