

Data Path : Z:\pestpcbsrv\HPCHEM1\ECD_0\Data\P0031224\
 Data File : P0102432.D
 Signal(s) : Signal #1: ECD1A.ch Signal #2: ECD2B.ch
 Acq On : 12 Mar 2024 21:42
 Operator : YP/AJ
 Sample : AR1268ICC1000
 Misc :
 ALS Vial : 26 Sample Multiplier: 1

Instrument :
 ECD_0
 ClientSampleId :
 AR1268ICC1000

Integration File signal 1: autoint1.e
 Integration File signal 2: autoint2.e
 Quant Time: Mar 13 04:33:41 2024
 Quant Method : Z:\pestpcbsrv\HPCHEM1\ECD_0\methods\P0031224.M
 Quant Title : GC EXTRACTABLES
 QLast Update : Wed Mar 13 04:33:34 2024
 Response via : Initial Calibration
 Integrator: ChemStation

Volume Inj. : 2 µl
 Signal #1 Phase : ZB-MR1 Signal #2 Phase: ZB-MR2
 Signal #1 Info : 30Mx0.32mmx 0.50µ Signal #2 Info : 30M x 0.32mm x 0.25µm

Compound	RT#1	RT#2	Resp#1	Resp#2	ng/ml	ng/ml

System Monitoring Compounds						
1) SA Tetrachlo...	4.269	3.383	390.9E6	267.4E6	97.585	97.666
2) SA Decachlor...	9.812	8.252	318.0E6	214.4E6	97.617	97.458
Target Compounds						
41) L9 AR-1268-1	8.424	7.207	259.1E6	209.1E6	971.876	976.446
42) L9 AR-1268-2	8.512	7.271	231.4E6	190.0E6	973.891	978.909
43) L9 AR-1268-3	8.724	7.472	214.9E6	178.1E6	972.249	979.451
44) L9 AR-1268-4	9.121	8.029	71387399	433.2E6	975.271	987.726
45) L9 AR-1268-5	9.503	8.252	616.0E6	214.4E6	981.943	974.583

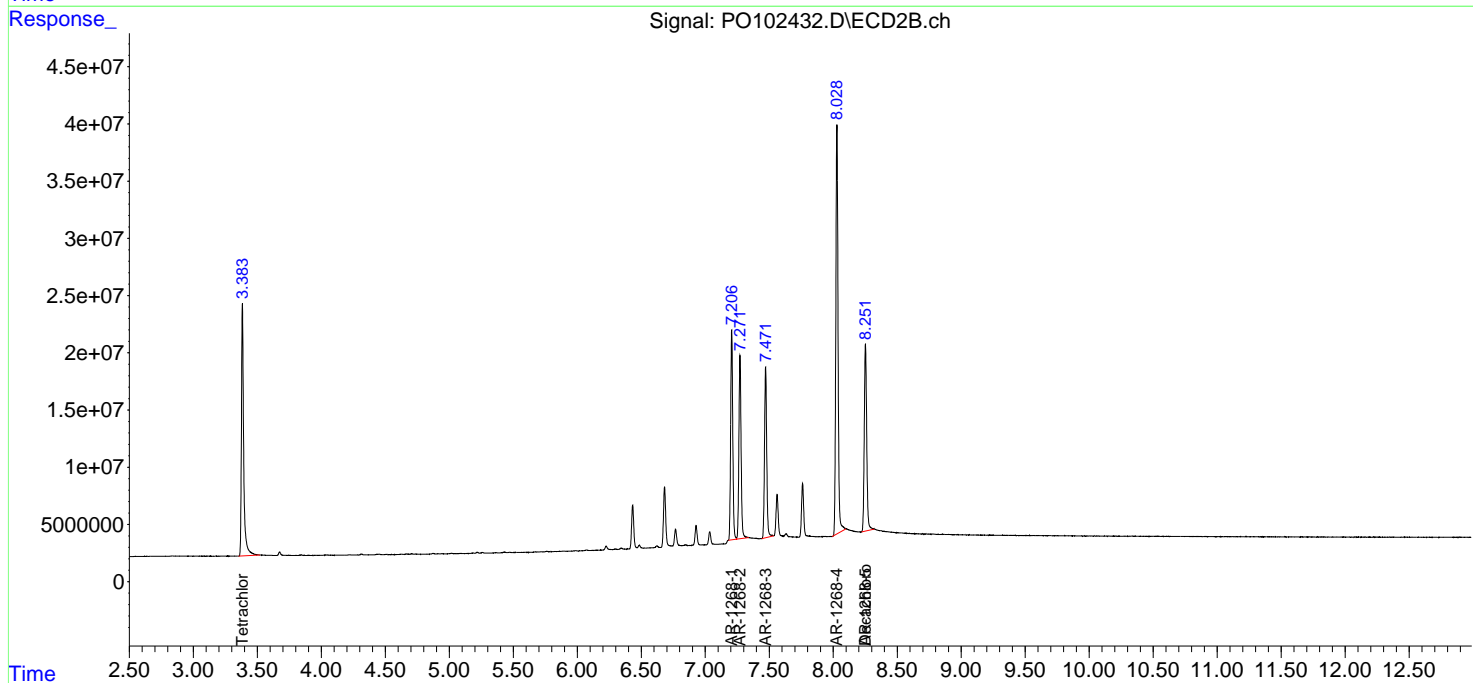
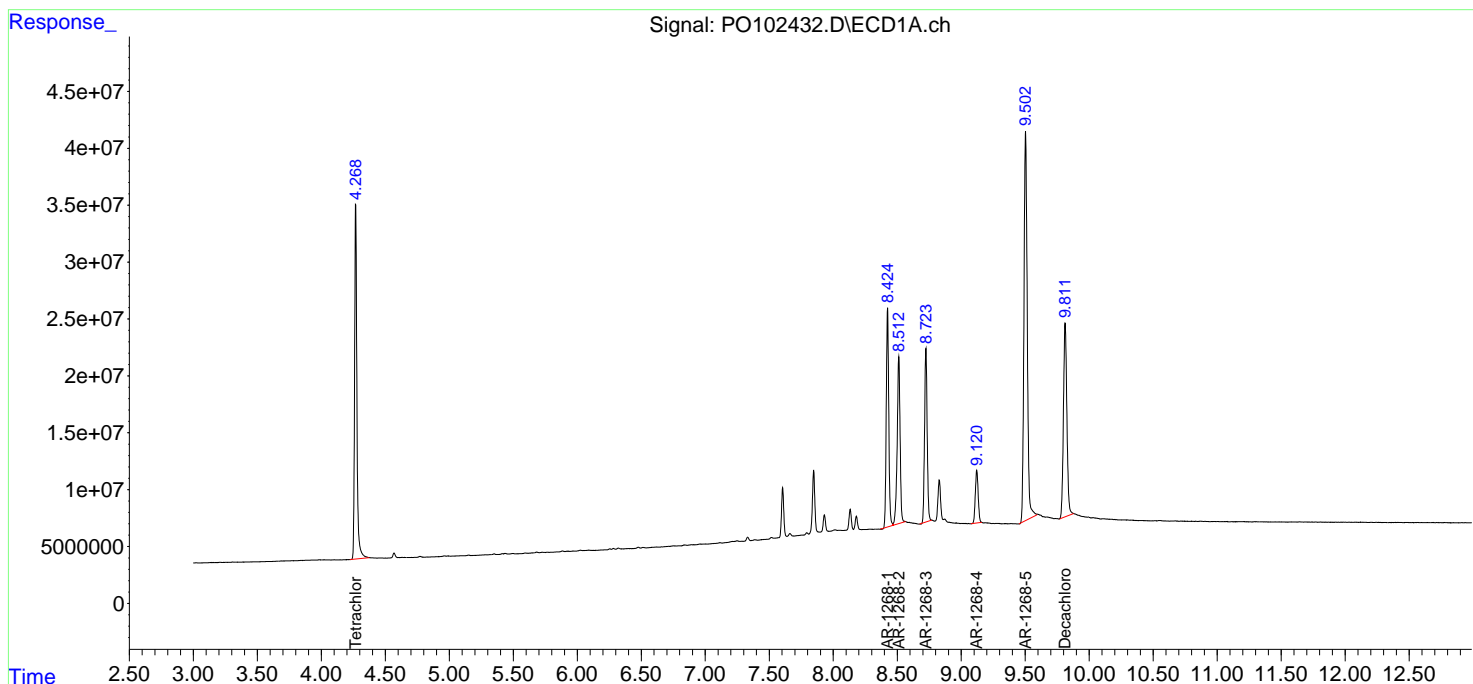
(f)=RT Delta > 1/2 Window (#)=Amounts differ by > 25% (m)=manual int.

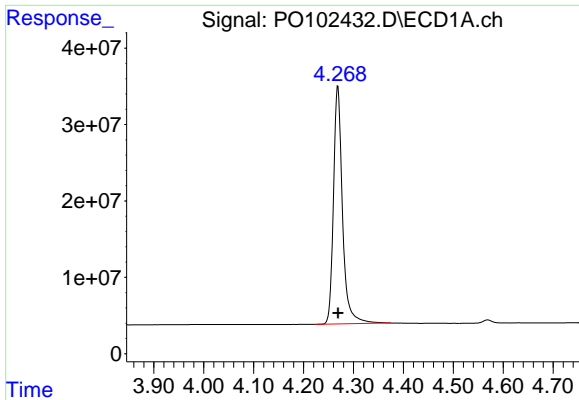
Data Path : Z:\pestpcbsrv\HPCHEM1\ECD_O\Data\PO031224\
 Data File : PO102432.D
 Signal(s) : Signal #1: ECD1A.ch Signal #2: ECD2B.ch
 Acq On : 12 Mar 2024 21:42
 Operator : YP/AJ
 Sample : AR1268ICC1000
 Misc :
 ALS Vial : 26 Sample Multiplier: 1

Instrument :
 ECD_O
 ClientSampleId :
 AR1268ICC1000

Integration File signal 1: autoint1.e
 Integration File signal 2: autoint2.e
 Quant Time: Mar 13 04:33:41 2024
 Quant Method : Z:\pestpcbsrv\HPCHEM1\ECD_O\methods\PO031224.M
 Quant Title : GC EXTRACTABLES
 QLast Update : Wed Mar 13 04:33:34 2024
 Response via : Initial Calibration
 Integrator: ChemStation

Volume Inj. : 2 µl
 Signal #1 Phase : ZB-MR1 Signal #2 Phase: ZB-MR2
 Signal #1 Info : 30Mx0.32mmx 0.50µ Signal #2 Info : 30M x 0.32mm x 0.25µm

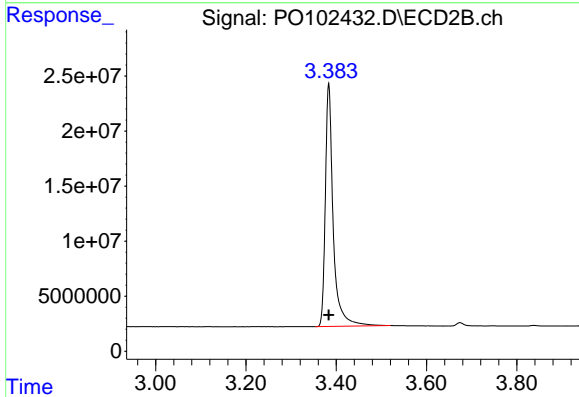




#1 Tetrachloro-m-xylene

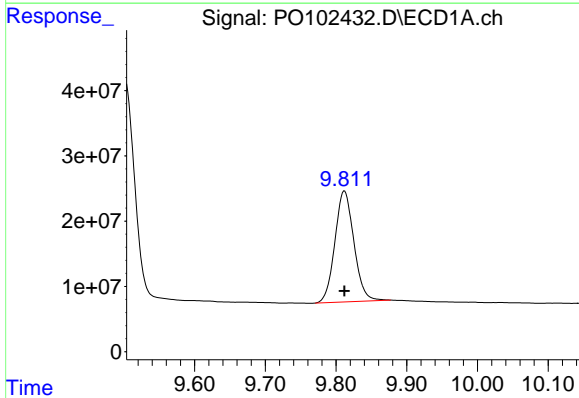
R.T.: 4.269 min
 Delta R.T.: 0.000 min
 Response: 390902674
 Conc: 97.58 ng/ml

Instrument :
 ECD_O
 ClientSampleId :
 AR1268ICC1000



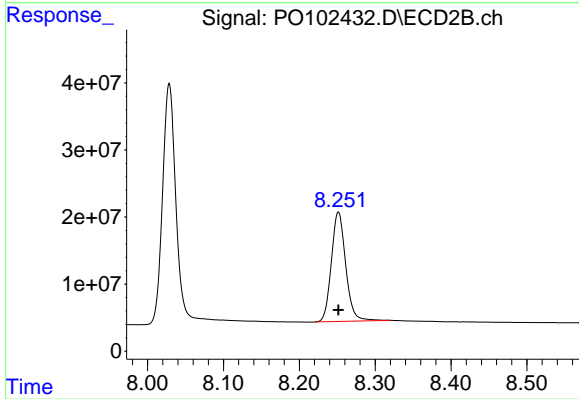
#1 Tetrachloro-m-xylene

R.T.: 3.383 min
 Delta R.T.: 0.000 min
 Response: 267425887
 Conc: 97.67 ng/ml



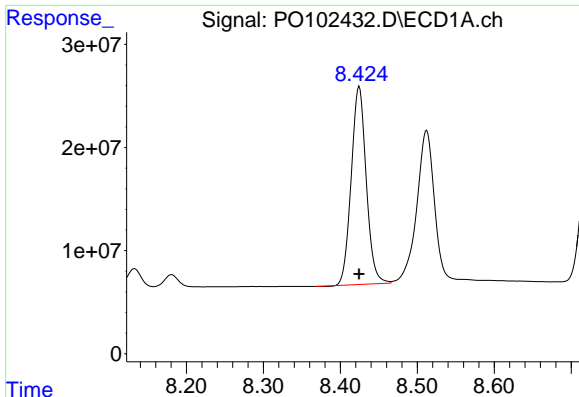
#2 Decachlorobiphenyl

R.T.: 9.812 min
 Delta R.T.: 0.000 min
 Response: 318037541
 Conc: 97.62 ng/ml



#2 Decachlorobiphenyl

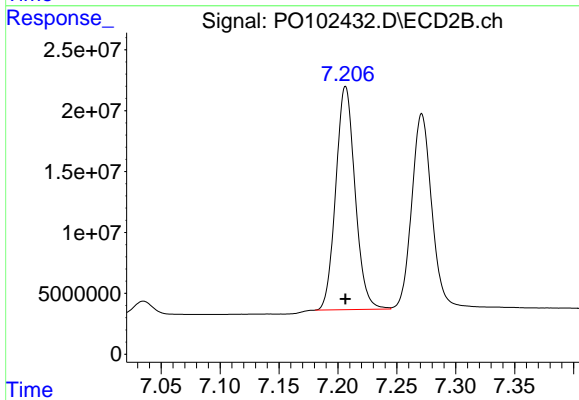
R.T.: 8.252 min
 Delta R.T.: 0.000 min
 Response: 214377020
 Conc: 97.46 ng/ml



#41 AR-1268-1

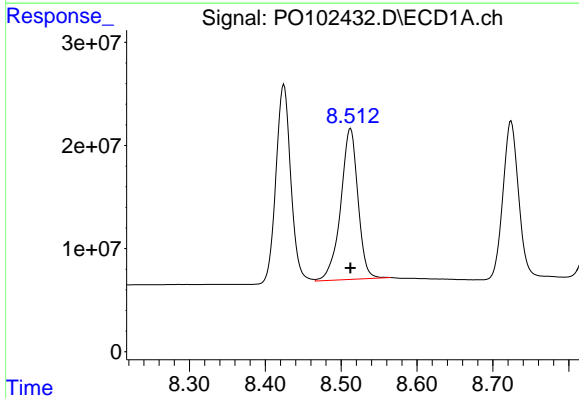
R.T.: 8.424 min
 Delta R.T.: 0.000 min
 Response: 259115122
 Conc: 971.88 ng/ml

Instrument :
 ECD_O
 ClientSampleId :
 AR1268ICC1000



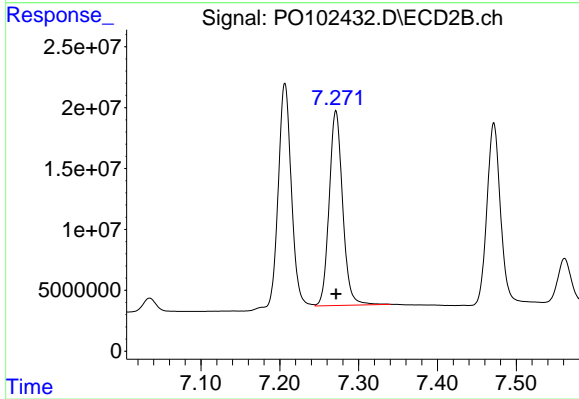
#41 AR-1268-1

R.T.: 7.207 min
 Delta R.T.: 0.000 min
 Response: 209130910
 Conc: 976.45 ng/ml



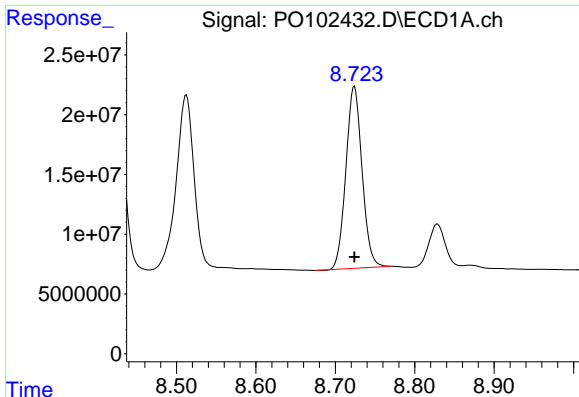
#42 AR-1268-2

R.T.: 8.512 min
 Delta R.T.: 0.000 min
 Response: 231353326
 Conc: 973.89 ng/ml



#42 AR-1268-2

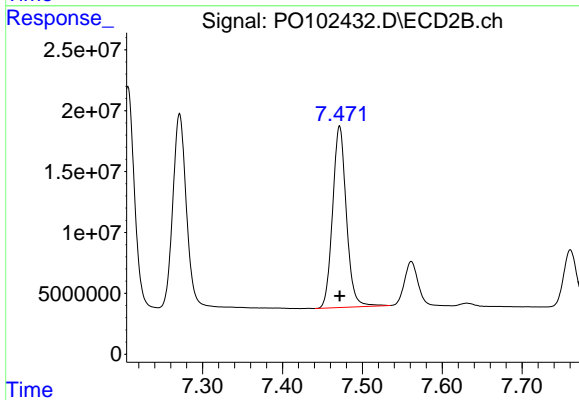
R.T.: 7.271 min
 Delta R.T.: 0.000 min
 Response: 189982362
 Conc: 978.91 ng/ml



#43 AR-1268-3

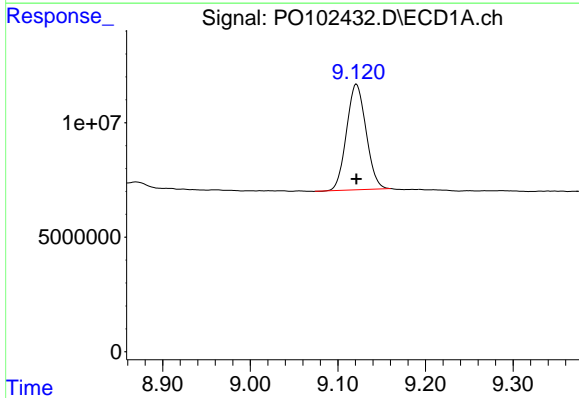
R.T.: 8.724 min
 Delta R.T.: 0.000 min
 Response: 214875904
 Conc: 972.25 ng/ml

Instrument :
 ECD_O
 ClientSampleId :
 AR1268ICC1000



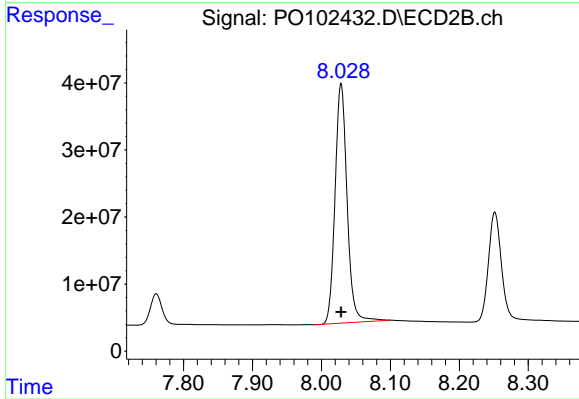
#43 AR-1268-3

R.T.: 7.472 min
 Delta R.T.: 0.000 min
 Response: 178091693
 Conc: 979.45 ng/ml



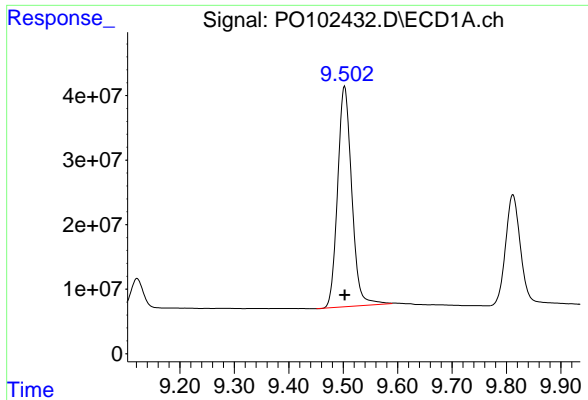
#44 AR-1268-4

R.T.: 9.121 min
 Delta R.T.: 0.000 min
 Response: 71387399
 Conc: 975.27 ng/ml



#44 AR-1268-4

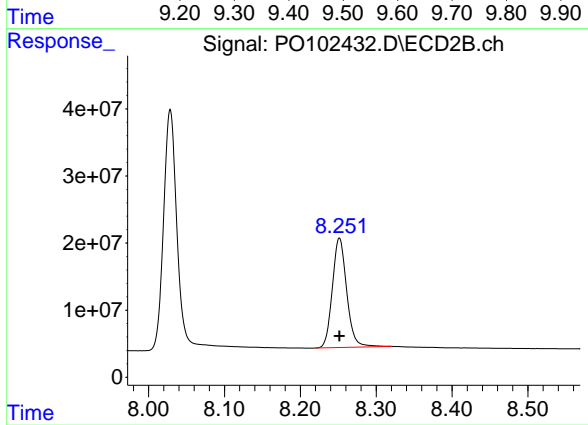
R.T.: 8.029 min
 Delta R.T.: 0.000 min
 Response: 433163930
 Conc: 987.73 ng/ml



#45 AR-1268-5

R.T.: 9.503 min
Delta R.T.: 0.000 min
Response: 615952676
Conc: 981.94 ng/ml

Instrument :
ECD_O
ClientSampleId :
AR1268ICC1000



#45 AR-1268-5

R.T.: 8.252 min
Delta R.T.: 0.000 min
Response: 214377020
Conc: 974.58 ng/ml