

Data Path : Z:\pestpcbsrv\HPCHEM1\ECD\_0\Data\P0031321\  
 Data File : P0076124.D  
 Signal(s) : Signal #1: ECD1A.CH Signal #2: ECD2B.CH  
 Acq On : 12 Mar 2021 23:53  
 Operator : DD\AJ  
 Sample : AR1242CCC500  
 Misc :  
 ALS Vial : 4 Sample Multiplier: 1

**Instrument :**  
 ECD\_0  
**ClientSampleId :**  
 AR1242CCC500

**Manual Integrations**  
**APPROVED**

Ankita  
 3/15/2021 1:08:12 PM

Integration File signal 1: autoint1.e  
 Integration File signal 2: autoint2.e  
 Quant Time: Mar 15 03:03:30 2021  
 Quant Method : Z:\pestpcbsrv\HPCHEM1\ECD\_0\methods\P0030421.M  
 Quant Title : GC EXTRACTABLES  
 QLast Update : Fri Mar 05 08:07:39 2021  
 Response via : Initial Calibration  
 Integrator: ChemStation 6890 Scale Mode: Small noise peaks clipped

Volume Inj. : 2 µl  
 Signal #1 Phase : ZB-MR1 Signal #2 Phase: ZB-MR2  
 Signal #1 Info : 30Mx0.32mmx 0.50µ Signal #2 Info : 30M x 0.32mm x 0.25µm

Compound	RT#1	RT#2	Resp#1	Resp#2	ng/ml	ng/ml
-----						
System Monitoring Compounds						
1) SA Tetrachlo...	4.928	3.943	2715516	2003942	45.557	44.923
2) SA Decachlor...	10.931	9.211	1659209	1627286	50.506	44.754
Target Compounds						
16) L4 AR-1242-1	6.250	5.188	574877	569777	394.907	479.052m
17) L4 AR-1242-2	6.274	5.210	881834	848813	395.319	437.000m
18) L4 AR-1242-3	6.340	5.399	557090	424684	408.032	433.852m
19) L4 AR-1242-4	6.448	5.494	456615	347625	428.436	354.324m
20) L4 AR-1242-5	7.231	6.056	464479	553942	433.386m	468.419
-----						

(f)=RT Delta > 1/2 Window (#)=Amounts differ by > 25% (m)=manual int.

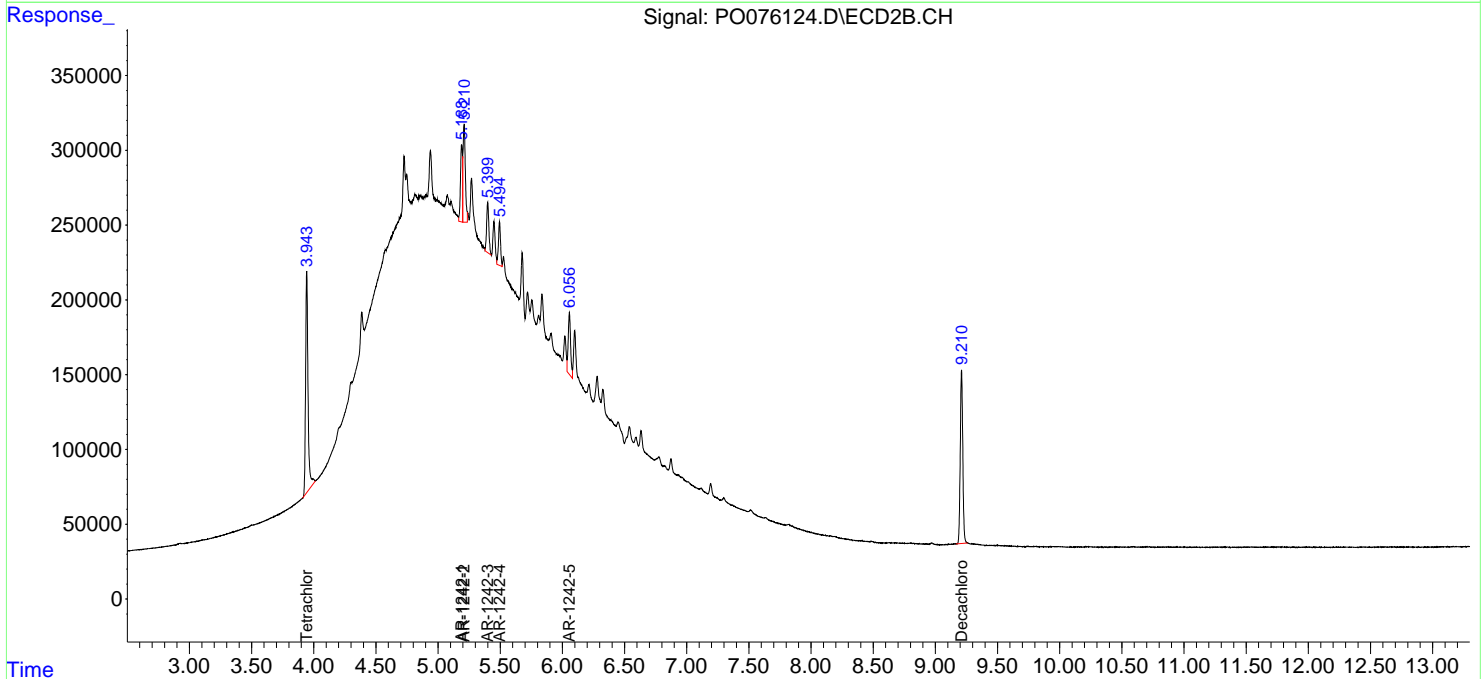
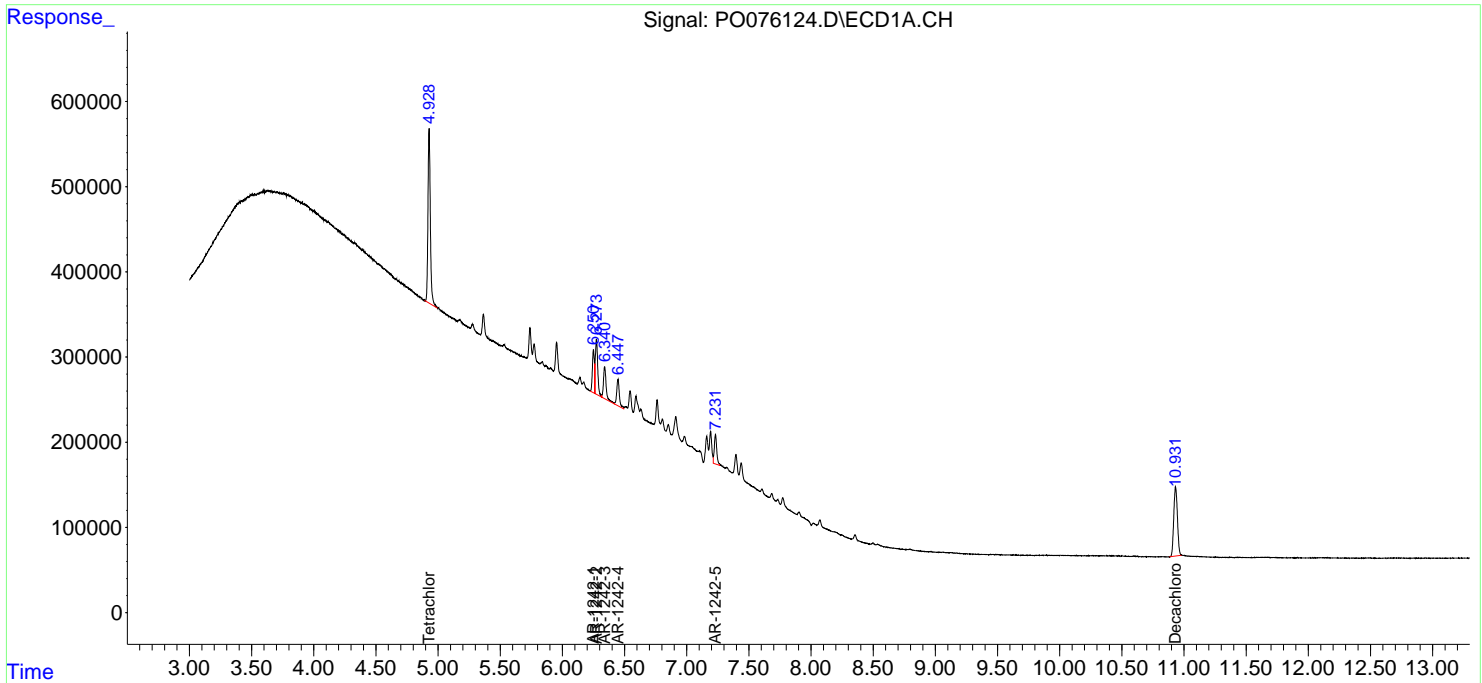
Data Path : Z:\pestpcbsrv\HPCHEM1\ECD\_0\Data\P0031321\  
 Data File : P0076124.D  
 Signal(s) : Signal #1: ECD1A.CH Signal #2: ECD2B.CH  
 Acq On : 12 Mar 2021 23:53  
 Operator : DD\AJ  
 Sample : AR1242CCC500  
 Misc :  
 ALS Vial : 4 Sample Multiplier: 1

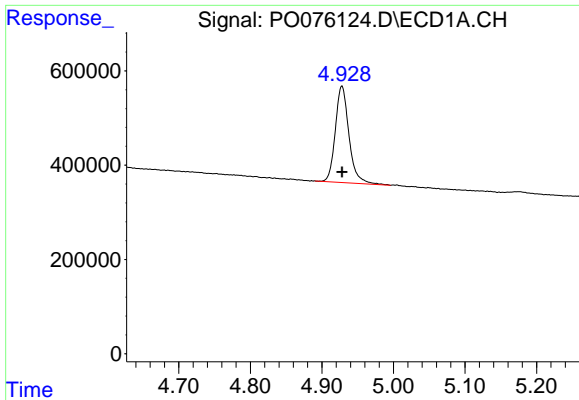
Instrument :  
 ECD\_O  
 Client Sampled :  
 AR1242CCC500

Manual Integrations  
**APPROVED**  
 Ankita  
 3/15/2021 1:08:12 PM

Integration File signal 1: autoint1.e  
 Integration File signal 2: autoint2.e  
 Quant Time: Mar 15 03:03:30 2021  
 Quant Method : Z:\pestpcbsrv\HPCHEM1\ECD\_0\methods\P0030421.M  
 Quant Title : GC EXTRACTABLES  
 QLast Update : Fri Mar 05 08:07:39 2021  
 Response via : Initial Calibration  
 Integrator: ChemStation 6890 Scale Mode: Small noise peaks clipped

Volume Inj. : 2 µl  
 Signal #1 Phase : ZB-MR1 Signal #2 Phase: ZB-MR2  
 Signal #1 Info : 30Mx0.32mmx 0.50µ Signal #2 Info : 30M x 0.32mm x 0.25µm

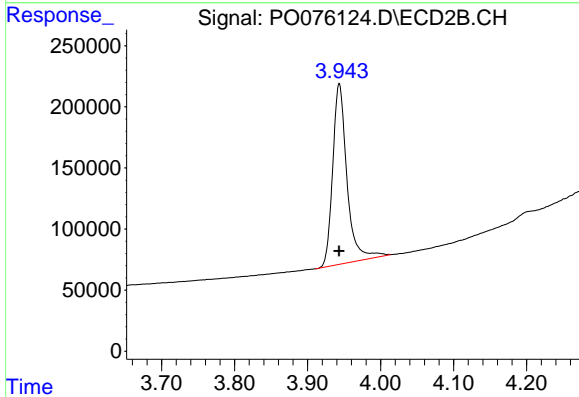




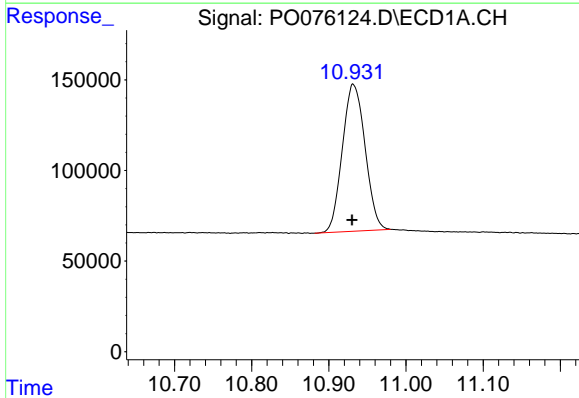
#1 Tetrachloro-m-xylene  
 R.T.: 4.928 min  
 Delta R.T.: 0.000 min  
 Response: 2715516  
 Conc: 45.56 ng/ml

Instrument :  
 ECD\_O  
 ClientSampled :  
 AR1242CCC500

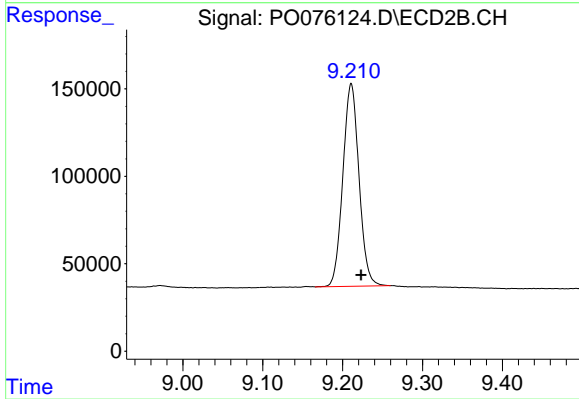
Manual Integrations  
 APPROVED  
 Ankita  
 3/15/2021 1:08:12 PM



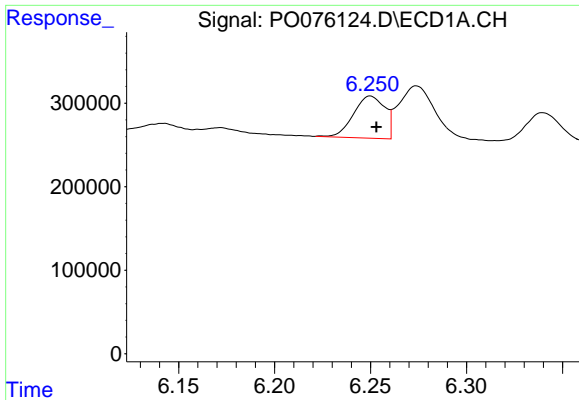
#1 Tetrachloro-m-xylene  
 R.T.: 3.943 min  
 Delta R.T.: 0.000 min  
 Response: 2003942  
 Conc: 44.92 ng/ml



#2 Decachlorobiphenyl  
 R.T.: 10.931 min  
 Delta R.T.: 0.001 min  
 Response: 1659209  
 Conc: 50.51 ng/ml



#2 Decachlorobiphenyl  
 R.T.: 9.211 min  
 Delta R.T.: -0.012 min  
 Response: 1627286  
 Conc: 44.75 ng/ml

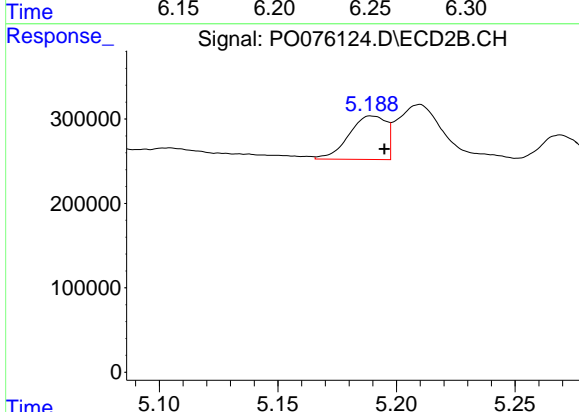


#16 AR-1242-1

R.T.: 6.250 min  
 Delta R.T.: -0.003 min  
 Response: 574877  
 Conc: 394.91 ng/ml

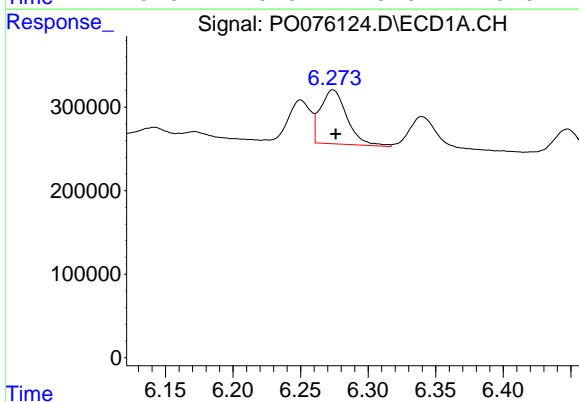
**Instrument :**  
 ECD\_O  
**ClientSampled :**  
 AR1242CCC500

**Manual Integrations**  
**APPROVED**  
 Ankita  
 3/15/2021 1:08:12 PM



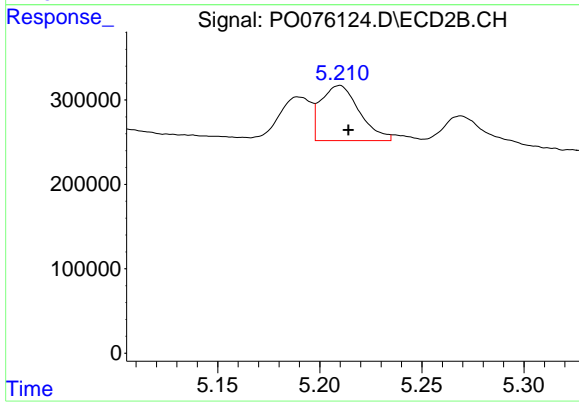
#16 AR-1242-1

R.T.: 5.188 min  
 Delta R.T.: -0.007 min  
 Response: 569777  
 Conc: 479.05 ng/ml m



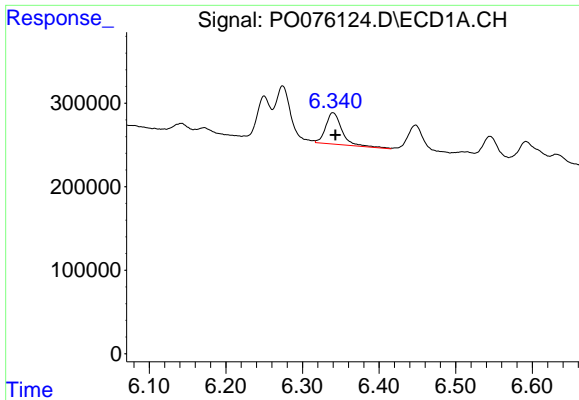
#17 AR-1242-2

R.T.: 6.274 min  
 Delta R.T.: -0.002 min  
 Response: 881834  
 Conc: 395.32 ng/ml



#17 AR-1242-2

R.T.: 5.210 min  
 Delta R.T.: -0.004 min  
 Response: 848813  
 Conc: 437.00 ng/ml m

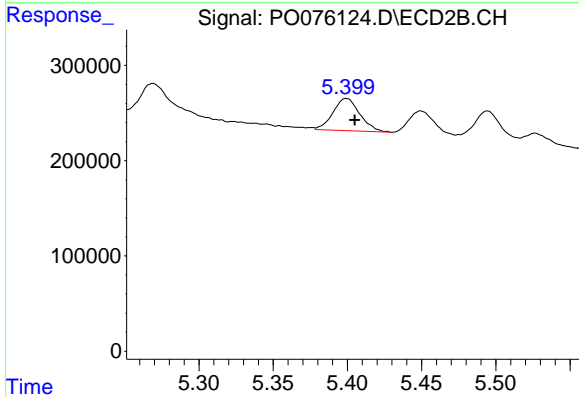


#18 AR-1242-3

R.T.: 6.340 min  
 Delta R.T.: -0.003 min  
 Response: 557090  
 Conc: 408.03 ng/ml

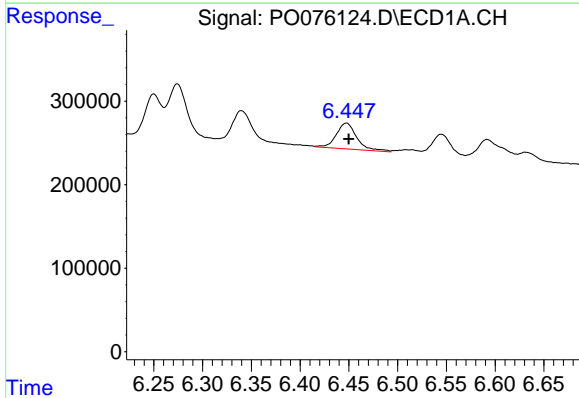
Instrument :  
 ECD\_O  
 ClientSampleId :  
 AR1242CCC500

Manual Integrations  
 APPROVED  
 Ankita  
 3/15/2021 1:08:12 PM



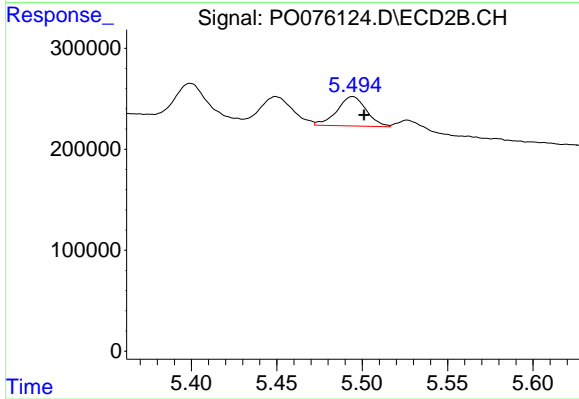
#18 AR-1242-3

R.T.: 5.399 min  
 Delta R.T.: -0.006 min  
 Response: 424684  
 Conc: 433.85 ng/ml m



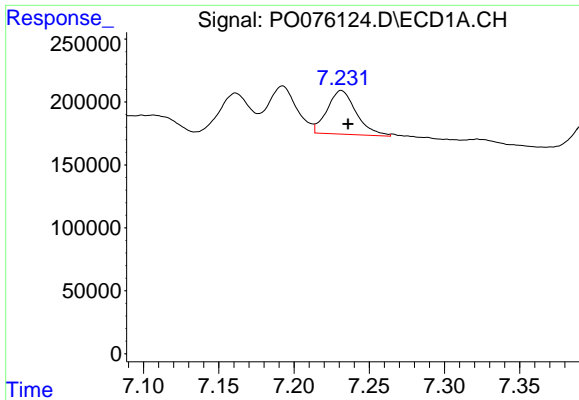
#19 AR-1242-4

R.T.: 6.448 min  
 Delta R.T.: -0.002 min  
 Response: 456615  
 Conc: 428.44 ng/ml



#19 AR-1242-4

R.T.: 5.494 min  
 Delta R.T.: -0.007 min  
 Response: 347625  
 Conc: 354.32 ng/ml m

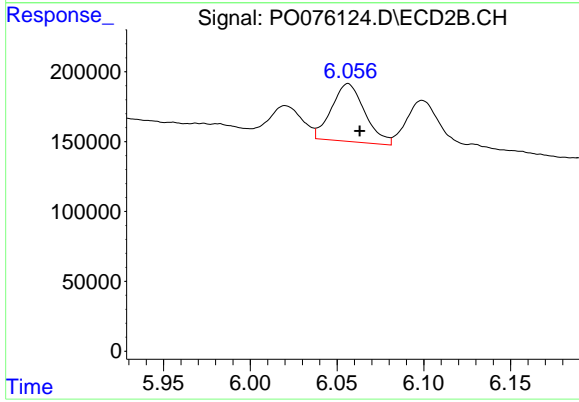


#20 AR-1242-5

R.T.: 7.231 min  
Delta R.T.: -0.005 min  
Response: 464479  
Conc: 433.39 ng/ml m

**Instrument :**  
ECD\_O  
**ClientSampled :**  
AR1242CCC500

**Manual Integrations**  
**APPROVED**  
Ankita  
3/15/2021 1:08:12 PM



#20 AR-1242-5

R.T.: 6.056 min  
Delta R.T.: -0.007 min  
Response: 553942  
Conc: 468.42 ng/ml