

Data Path : Z:\pestpcbsrv\HPCHEM1\ECD_O\Data\P0031522\
 Data File : P0085391.D
 Signal(s) : Signal #1: ECD1A.CH Signal #2: ECD2B.CH
 Acq On : 16 Mar 2022 12:16
 Operator : YP\AJ
 Sample : N1950-06
 Misc :
 ALS Vial : 48 Sample Multiplier: 1

Instrument :
 ECD_O
 ClientSampleId :
 31432

Integration File signal 1: autoint1.e
 Integration File signal 2: autoint2.e
 Quant Time: Mar 16 13:49:20 2022
 Quant Method : Z:\pestpcbsrv\HPCHEM1\ECD_O\methods\P0031522.M
 Quant Title : GC EXTRACTABLES
 QLast Update : Wed Mar 16 04:43:31 2022
 Response via : Initial Calibration
 Integrator: ChemStation 6890 Scale Mode: Small noise peaks clipped

Volume Inj. : 2 µl
 Signal #1 Phase : ZB-MR1 Signal #2 Phase: ZB-MR2
 Signal #1 Info : 30Mx0.32mmx 0.50µ Signal #2 Info : 30M x 0.32mm x 0.25µm

Compound	RT#1	RT#2	Resp#1	Resp#2	ng/ml	ng/ml
System Monitoring Compounds						
1) SA Tetrachlo...	4.497	3.598	2023256	861537	9.895	20.109 #
2) SA Decachlor...	10.399	8.605	1815403	381869	15.102	9.946 #
Target Compounds						
3) L1 AR-1016-1	5.676	4.692	178768	1616620	28.407	1012.998 #
4) L1 AR-1016-2	5.713	4.692	337899	1616620	36.889	698.696 #
5) L1 AR-1016-3	5.790	4.873	3803261	792488	698.720	634.110
6) L1 AR-1016-4	5.859	4.922	2065476	1319249	468.251	1208.506 #
7) L1 AR-1016-5	6.157	5.131	3185560	168698	750.219	124.722 #
8) L2 AR-1221-1	4.706	3.811	506460	-47009	229.603	N.D. #
9) L2 AR-1221-2	4.787	3.878	1301361	75037	798.873	178.703 #
10) L2 AR-1221-3	4.874	3.971	365639	167919	71.107	130.948 #
11) L3 AR-1232-1	4.874	3.971	365639	167919	77.694	141.730 #
12) L3 AR-1232-2	5.410	4.692	1763722	1616620	765.373	1483.746 #
13) L3 AR-1232-3	5.713	4.873	337899	792488	80.075	1304.122 #
14) L3 AR-1232-4	5.859	4.979	2065476	816507	1028.639	1465.096 #
15) L3 AR-1232-5	5.962	5.131	5941898	168698	4037.159	273.603 #
16) L4 AR-1242-1	5.676	4.692	178768	1616620	35.164	1237.233 #
17) L4 AR-1242-2	5.713	4.692	337899	1616620	45.519	874.783 #
18) L4 AR-1242-3	5.790	4.873	3803261	792488	865.455	783.750
19) L4 AR-1242-4	5.859	4.979	2065476	816507	569.209	785.516 #
20) L4 AR-1242-5	6.603	5.491	1108888	716161	312.065	580.293 #
21) L5 AR-1248-1	5.676	4.692	178768	1616620	47.955	1672.135 #
22) L5 AR-1248-2	5.962	4.922	5941898	1319249	1121.005	900.942
23) L5 AR-1248-3	6.157	4.979	3185560	816507	541.453	532.710
24) L5 AR-1248-4	6.561	5.131	2387550	168698	370.339	95.976 #
25) L5 AR-1248-5	6.603	5.521	1108888	1098873	179.104	639.774 #
26) L6 AR-1254-1	6.561	5.491	2387550	716161	360.262	272.489
27) L6 AR-1254-2	6.776	5.636	7095986	613962	709.053	263.121 #
28) L6 AR-1254-3	7.124	6.062	1513188	1213694	147.032	330.453 #
29) L6 AR-1254-4	7.446	6.270	1278780	127062	182.269	57.362 #
30) L6 AR-1254-5	7.852	6.707	818869	571661	107.020	175.745 #
31) L7 AR-1260-1	7.319	6.171	1889159	192098	273.791	81.026 #
32) L7 AR-1260-2	7.579	6.354	1606457	202432	205.360	72.515 #
33) L7 AR-1260-3	7.907	6.524	3906312	212140	665.060	80.686 #
34) L7 AR-1260-4	8.170	6.983	8703450	366977	1260.087	163.843 #
35) L7 AR-1260-5	8.478	7.244	1373001	162838	97.728	32.323 #
36) L8 AR-1262-1	7.907	6.707	3906312	571661	432.504	332.945
37) L8 AR-1262-2	8.478	6.983	1373001	366977	86.170	128.144 #
39) L8 AR-1262-4	8.902	7.579	2160840	815202	460.062	204.280 #
40) L8 AR-1262-5	9.634f	8.063	108961	90419	20.489	49.316 #
42) L9 AR-1268-2	8.902	7.579	2160840	815202	124.360	138.312
43) L9 AR-1268-3	9.156	7.793	-20877	436704	N.D.	87.897 #

Data Path : Z:\pestpcbsrv\HPCHEM1\ECD_0\Data\P0031522\
 Data File : P0085391.D
 Signal(s) : Signal #1: ECD1A.CH Signal #2: ECD2B.CH
 Acq On : 16 Mar 2022 12:16
 Operator : YP\AJ
 Sample : N1950-06
 Misc :
 ALS Vial : 48 Sample Multiplier: 1

Instrument :
 ECD_0
 ClientSampleId :
 31432

Integration File signal 1: autoint1.e
 Integration File signal 2: autoint2.e
 Quant Time: Mar 16 13:49:20 2022
 Quant Method : Z:\pestpcbsrv\HPCHEM1\ECD_0\methods\P0031522.M
 Quant Title : GC EXTRACTABLES
 QLast Update : Wed Mar 16 04:43:31 2022
 Response via : Initial Calibration
 Integrator: ChemStation 6890 Scale Mode: Small noise peaks clipped

Volume Inj. : 2 µl
 Signal #1 Phase : ZB-MR1 Signal #2 Phase: ZB-MR2
 Signal #1 Info : 30Mx0.32mmx 0.50µ Signal #2 Info : 30M x 0.32mm x 0.25µm

	Compound	RT#1	RT#2	Resp#1	Resp#2	ng/ml	ng/ml
44)	L9 AR-1268-4	9.634f	8.063	108961	90419	17.858	42.607 #
45)	L9 AR-1268-5	10.030	8.351	376924	36960	7.808	2.639 #

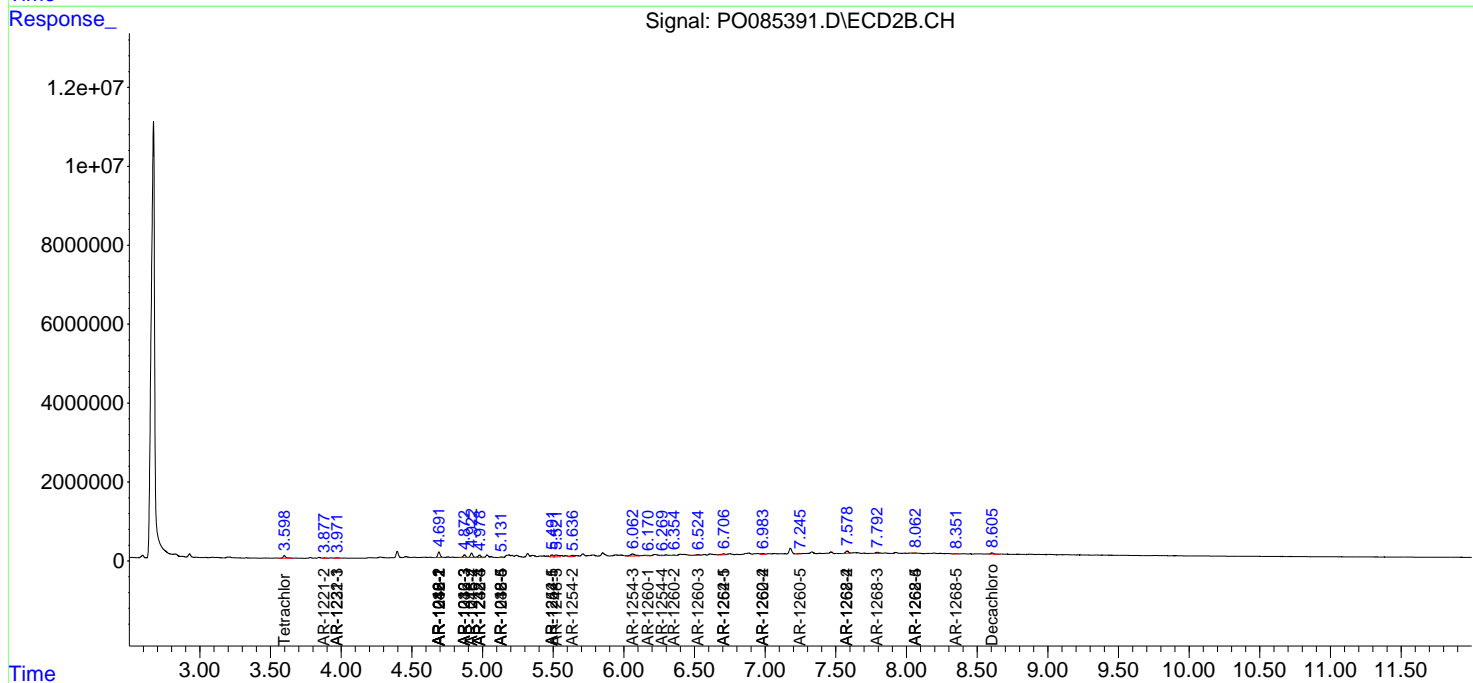
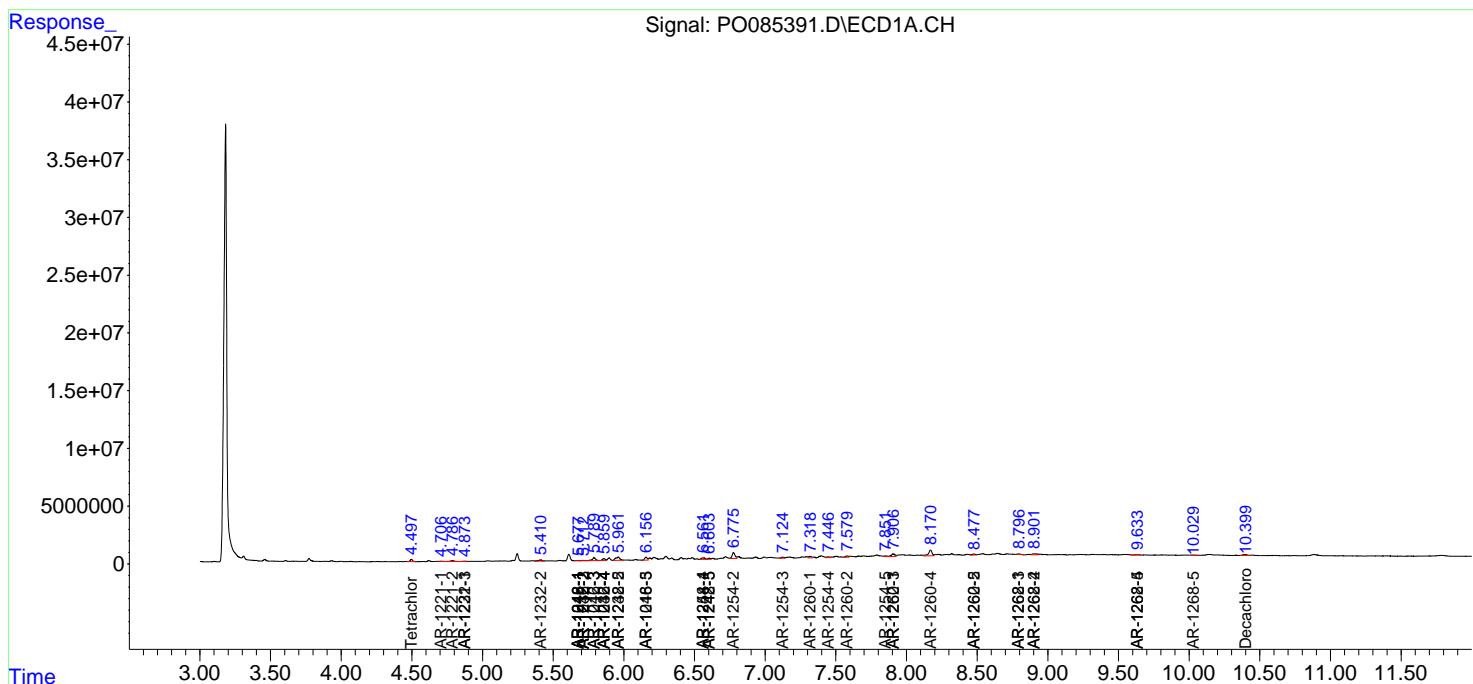
(f)=RT Delta > 1/2 Window (#)=Amounts differ by > 25% (m)=manual int.

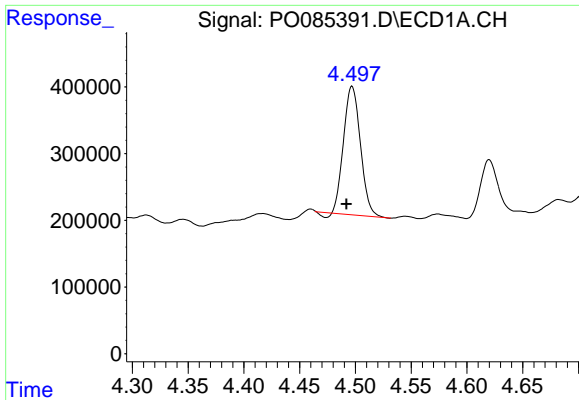
Data Path : Z:\pestpcbsrv\HPCHEM1\ECD_O\Data\P0031522\
 Data File : P0085391.D
 Signal(s) : Signal #1: ECD1A.CH Signal #2: ECD2B.CH
 Acq On : 16 Mar 2022 12:16
 Operator : YP\AJ
 Sample : N1950-06
 Misc :
 ALS Vial : 48 Sample Multiplier: 1

Instrument :
 ECD_O
 ClientSampleId :
 31432

Integration File signal 1: autoint1.e
 Integration File signal 2: autoint2.e
 Quant Time: Mar 16 13:49:20 2022
 Quant Method : Z:\pestpcbsrv\HPCHEM1\ECD_O\methods\P0031522.M
 Quant Title : GC EXTRACTABLES
 QLast Update : Wed Mar 16 04:43:31 2022
 Response via : Initial Calibration
 Integrator: ChemStation 6890 Scale Mode: Small noise peaks clipped

Volume Inj. : 2 µl
 Signal #1 Phase : ZB-MR1 Signal #2 Phase: ZB-MR2
 Signal #1 Info : 30Mx0.32mmx 0.50µ Signal #2 Info : 30M x 0.32mm x 0.25µm

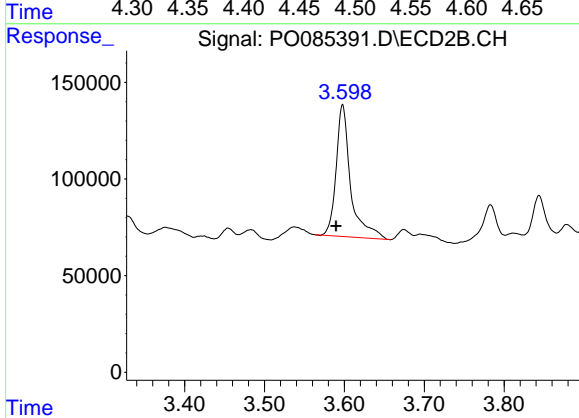




#1 Tetrachloro-m-xylene

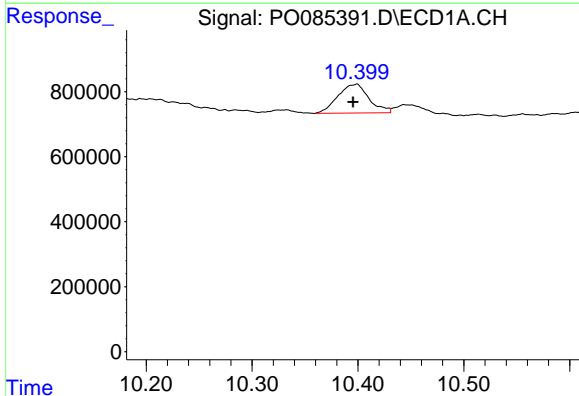
R.T.: 4.497 min
 Delta R.T.: 0.005 min
 Response: 2023256
 Conc: 9.89 ng/ml

Instrument :
 ECD_O
 ClientSampleId :
 31432



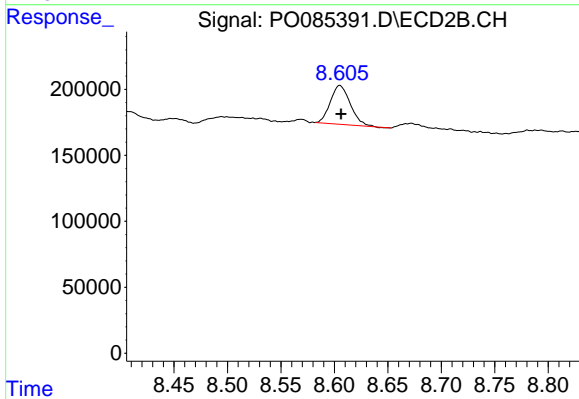
#1 Tetrachloro-m-xylene

R.T.: 3.598 min
 Delta R.T.: 0.008 min
 Response: 861537
 Conc: 20.11 ng/ml



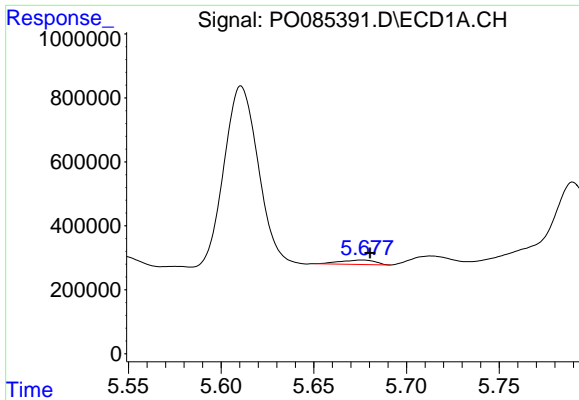
#2 Decachlorobiphenyl

R.T.: 10.399 min
 Delta R.T.: 0.003 min
 Response: 1815403
 Conc: 15.10 ng/ml



#2 Decachlorobiphenyl

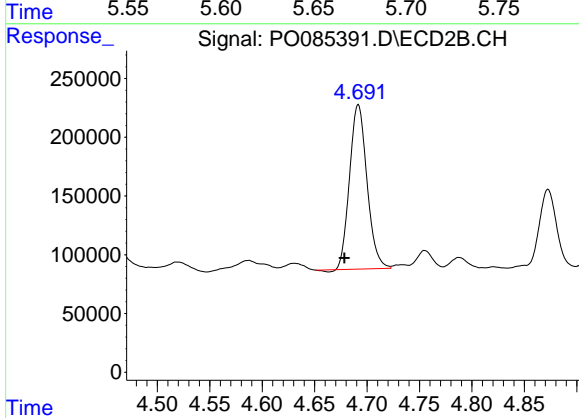
R.T.: 8.605 min
 Delta R.T.: -0.001 min
 Response: 381869
 Conc: 9.95 ng/ml



#3 AR-1016-1

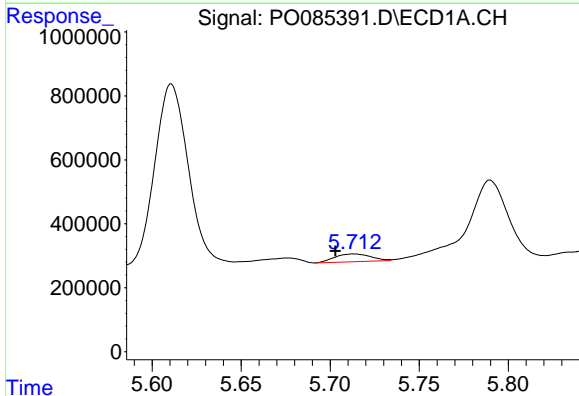
R.T.: 5.676 min
 Delta R.T.: -0.004 min
 Response: 178768
 Conc: 28.41 ng/ml

Instrument :
 ECD_O
 ClientSampleId :
 31432



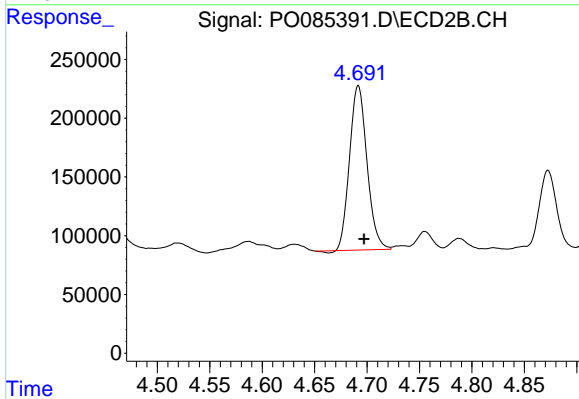
#3 AR-1016-1

R.T.: 4.692 min
 Delta R.T.: 0.013 min
 Response: 1616620
 Conc: 1013.00 ng/ml



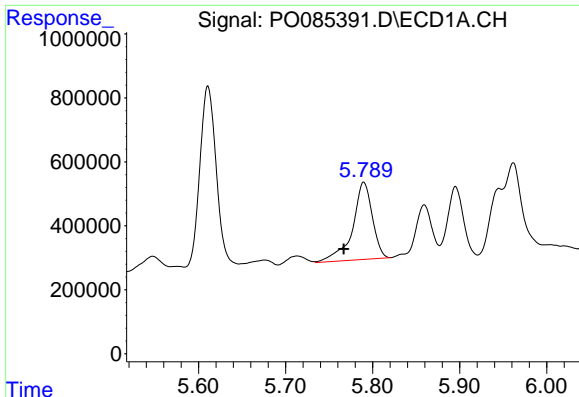
#4 AR-1016-2

R.T.: 5.713 min
 Delta R.T.: 0.010 min
 Response: 337899
 Conc: 36.89 ng/ml



#4 AR-1016-2

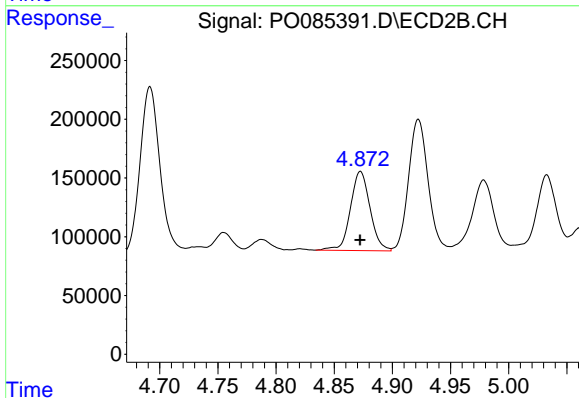
R.T.: 4.692 min
 Delta R.T.: -0.005 min
 Response: 1616620
 Conc: 698.70 ng/ml



#5 AR-1016-3

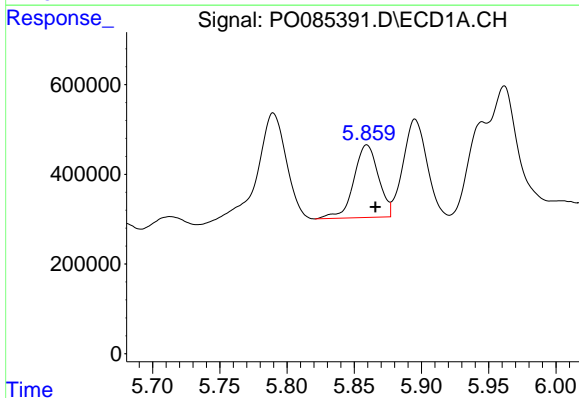
R.T.: 5.790 min
 Delta R.T.: 0.023 min
 Response: 3803261
 Conc: 698.72 ng/ml

Instrument :
 ECD_O
 ClientSampleId :
 31432



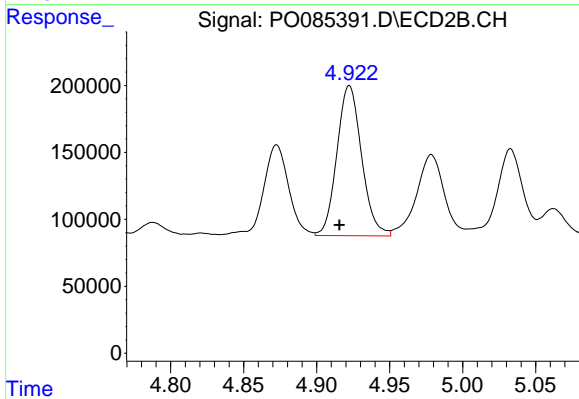
#5 AR-1016-3

R.T.: 4.873 min
 Delta R.T.: 0.000 min
 Response: 792488
 Conc: 634.11 ng/ml



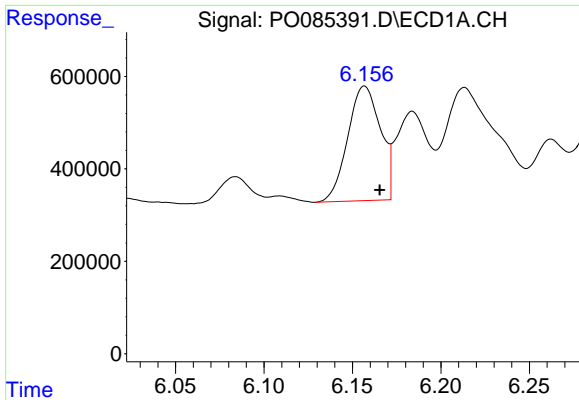
#6 AR-1016-4

R.T.: 5.859 min
 Delta R.T.: -0.006 min
 Response: 2065476
 Conc: 468.25 ng/ml



#6 AR-1016-4

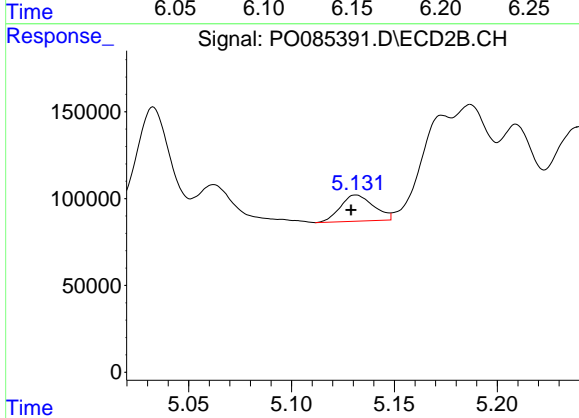
R.T.: 4.922 min
 Delta R.T.: 0.007 min
 Response: 1319249
 Conc: 1208.51 ng/ml



#7 AR-1016-5

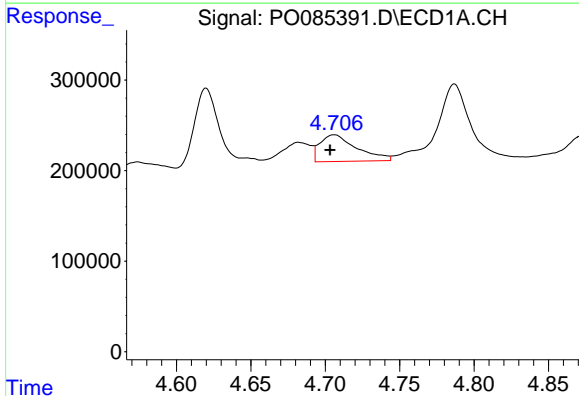
R.T.: 6.157 min
 Delta R.T.: -0.009 min
 Response: 3185560
 Conc: 750.22 ng/ml

Instrument :
 ECD_O
 ClientSampleId :
 31432



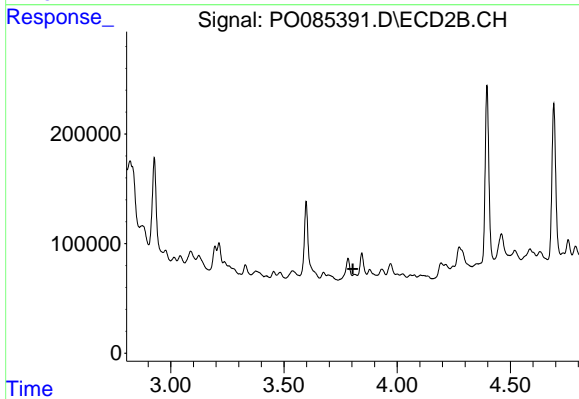
#7 AR-1016-5

R.T.: 5.131 min
 Delta R.T.: 0.002 min
 Response: 168698
 Conc: 124.72 ng/ml



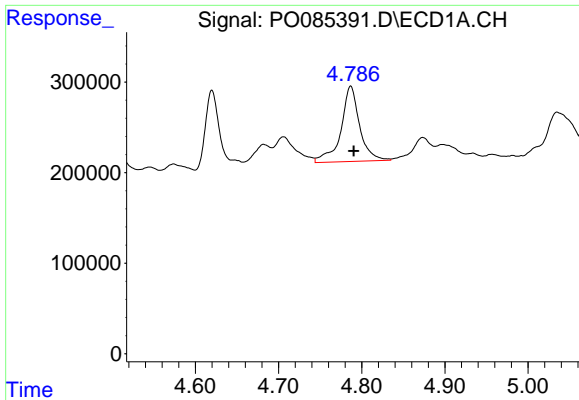
#8 AR-1221-1

R.T.: 4.706 min
 Delta R.T.: 0.003 min
 Response: 506460
 Conc: 229.60 ng/ml



#8 AR-1221-1

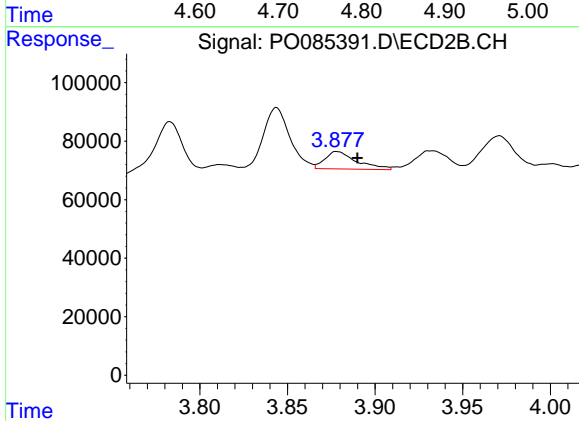
R.T.: 3.811 min
 Delta R.T.: 0.006 min
 Response: -47009
 Conc: N.D.



#9 AR-1221-2

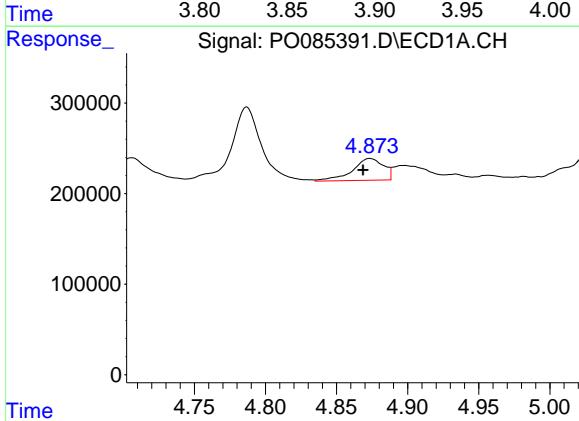
R.T.: 4.787 min
 Delta R.T.: -0.004 min
 Response: 1301361
 Conc: 798.87 ng/ml

Instrument :
 ECD_O
 ClientSampleId :
 31432



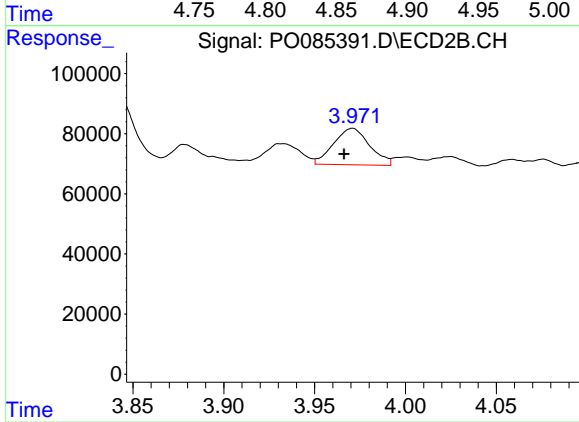
#9 AR-1221-2

R.T.: 3.878 min
 Delta R.T.: -0.012 min
 Response: 75037
 Conc: 178.70 ng/ml



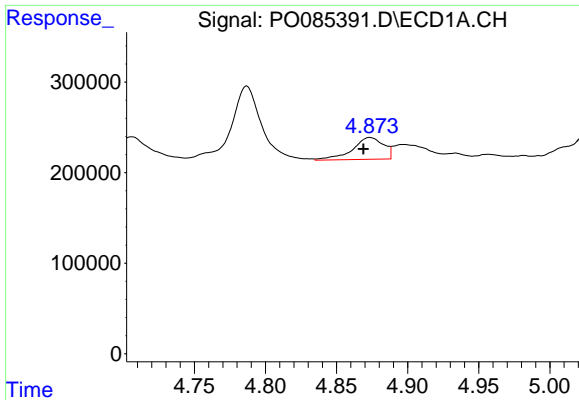
#10 AR-1221-3

R.T.: 4.874 min
 Delta R.T.: 0.005 min
 Response: 365639
 Conc: 71.11 ng/ml



#10 AR-1221-3

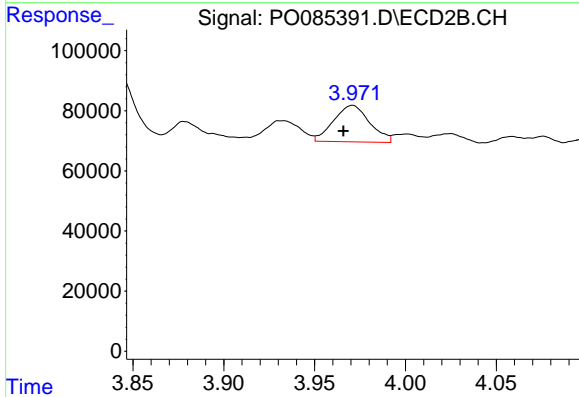
R.T.: 3.971 min
 Delta R.T.: 0.005 min
 Response: 167919
 Conc: 130.95 ng/ml



#11 AR-1232-1

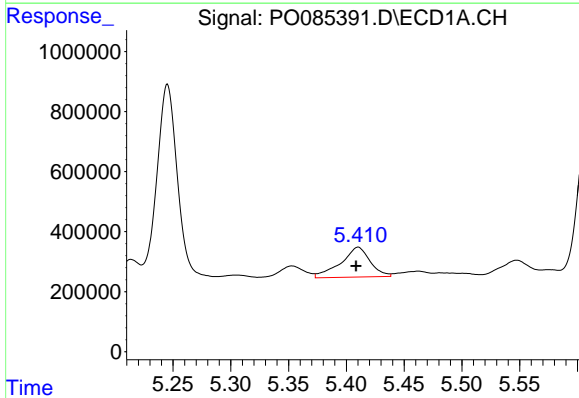
R.T.: 4.874 min
 Delta R.T.: 0.005 min
 Response: 365639
 Conc: 77.69 ng/ml

Instrument :
 ECD_O
 ClientSampleId :
 31432



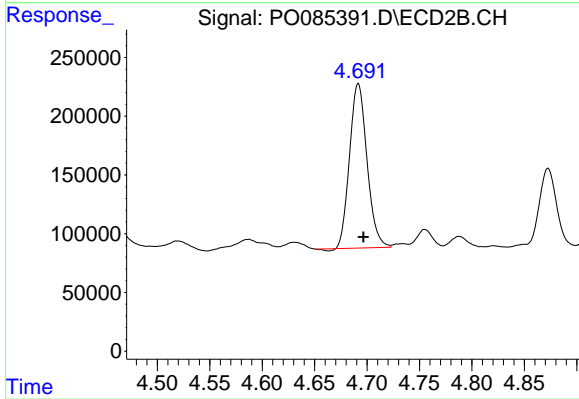
#11 AR-1232-1

R.T.: 3.971 min
 Delta R.T.: 0.005 min
 Response: 167919
 Conc: 141.73 ng/ml



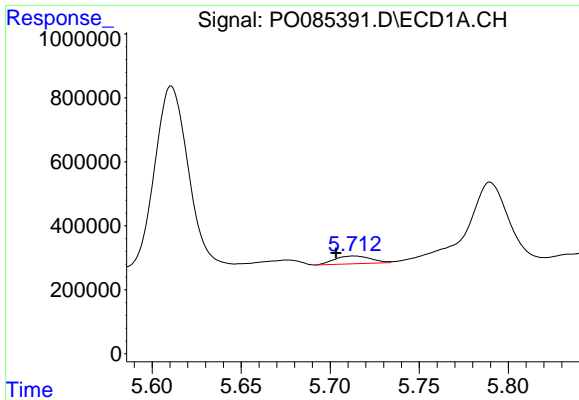
#12 AR-1232-2

R.T.: 5.410 min
 Delta R.T.: 0.002 min
 Response: 1763722
 Conc: 765.37 ng/ml



#12 AR-1232-2

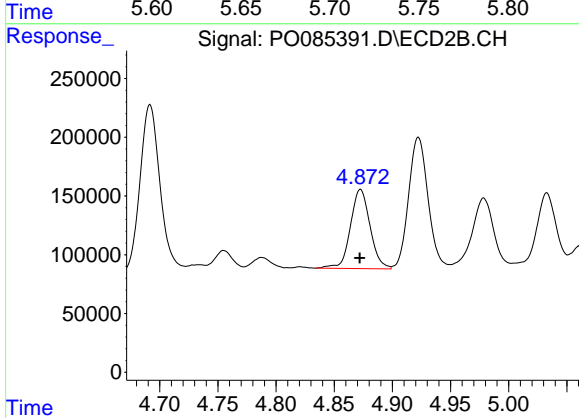
R.T.: 4.692 min
 Delta R.T.: -0.005 min
 Response: 1616620
 Conc: 1483.75 ng/ml



#13 AR-1232-3

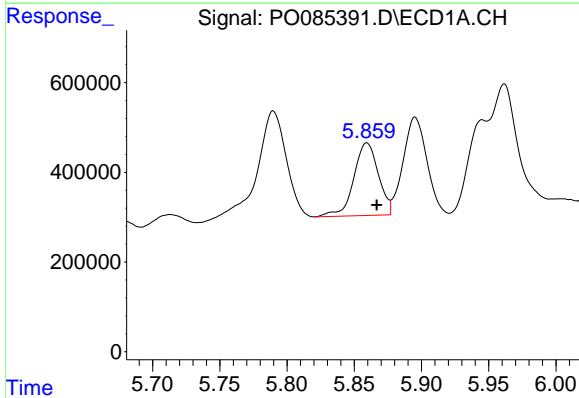
R.T.: 5.713 min
 Delta R.T.: 0.010 min
 Response: 337899
 Conc: 80.08 ng/ml

Instrument :
 ECD_O
 ClientSampleId :
 31432



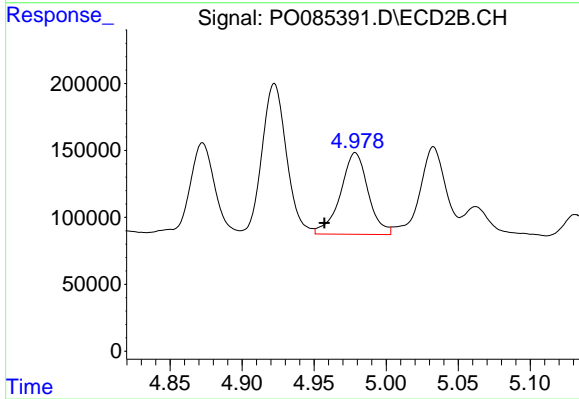
#13 AR-1232-3

R.T.: 4.873 min
 Delta R.T.: 0.000 min
 Response: 792488
 Conc: 1304.12 ng/ml



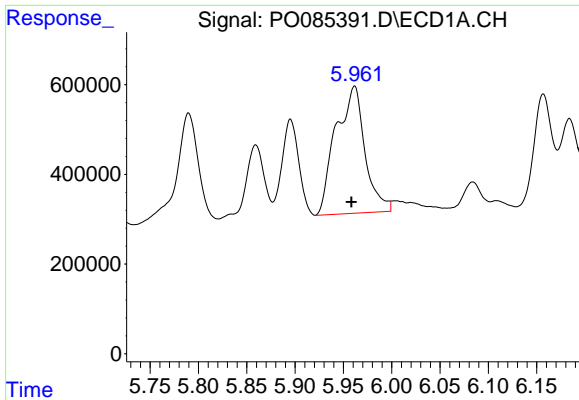
#14 AR-1232-4

R.T.: 5.859 min
 Delta R.T.: -0.007 min
 Response: 2065476
 Conc: 1028.64 ng/ml



#14 AR-1232-4

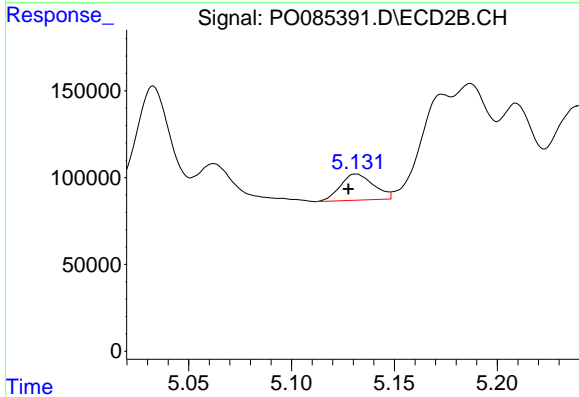
R.T.: 4.979 min
 Delta R.T.: 0.022 min
 Response: 816507
 Conc: 1465.10 ng/ml



#15 AR-1232-5

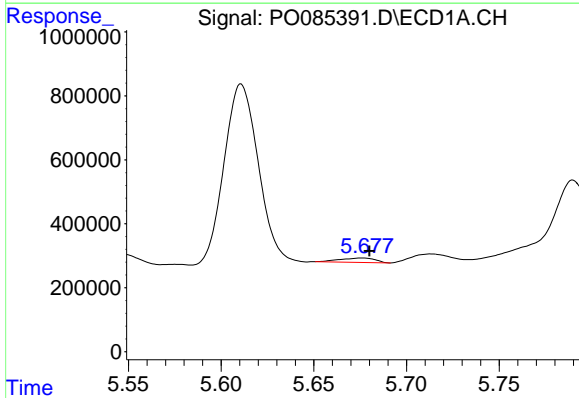
R.T.: 5.962 min
 Delta R.T.: 0.003 min
 Response: 5941898
 Conc: 4037.16 ng/ml

Instrument :
 ECD_O
 ClientSampleId :
 31432



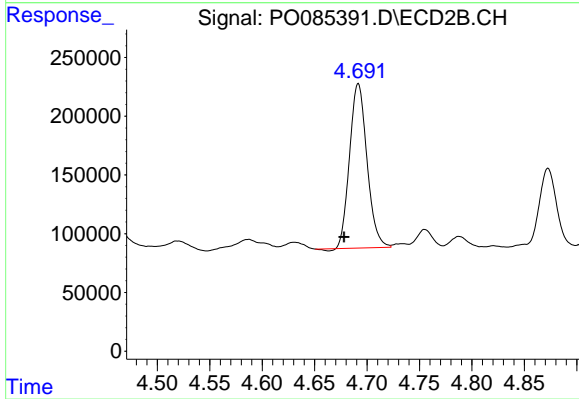
#15 AR-1232-5

R.T.: 5.131 min
 Delta R.T.: 0.004 min
 Response: 168698
 Conc: 273.60 ng/ml



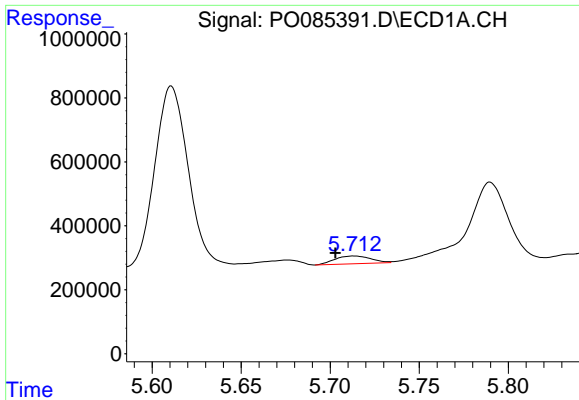
#16 AR-1242-1

R.T.: 5.676 min
 Delta R.T.: -0.004 min
 Response: 178768
 Conc: 35.16 ng/ml



#16 AR-1242-1

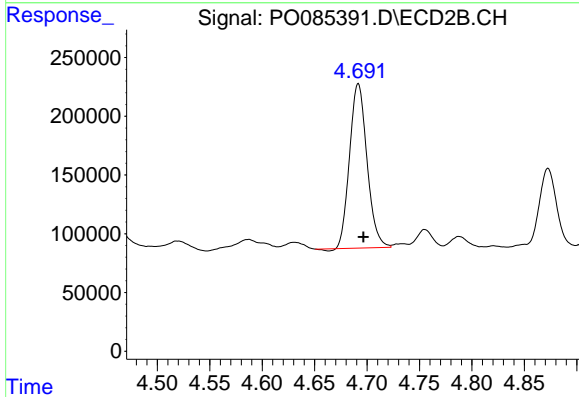
R.T.: 4.692 min
 Delta R.T.: 0.014 min
 Response: 1616620
 Conc: 1237.23 ng/ml



#17 AR-1242-2

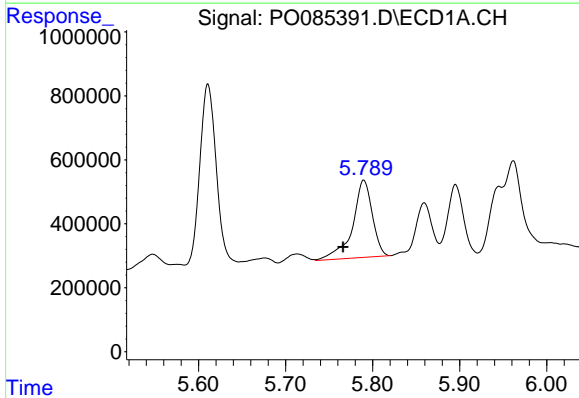
R.T.: 5.713 min
 Delta R.T.: 0.010 min
 Response: 337899
 Conc: 45.52 ng/ml

Instrument :
 ECD_O
 ClientSampleId :
 31432



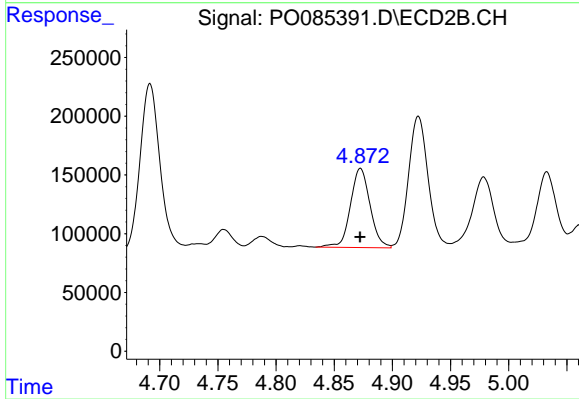
#17 AR-1242-2

R.T.: 4.692 min
 Delta R.T.: -0.005 min
 Response: 1616620
 Conc: 874.78 ng/ml



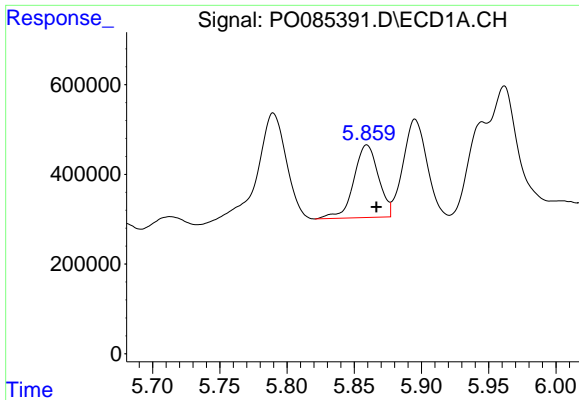
#18 AR-1242-3

R.T.: 5.790 min
 Delta R.T.: 0.024 min
 Response: 3803261
 Conc: 865.46 ng/ml



#18 AR-1242-3

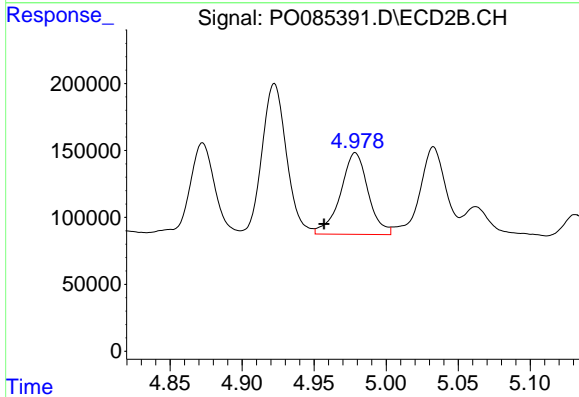
R.T.: 4.873 min
 Delta R.T.: 0.000 min
 Response: 792488
 Conc: 783.75 ng/ml



#19 AR-1242-4

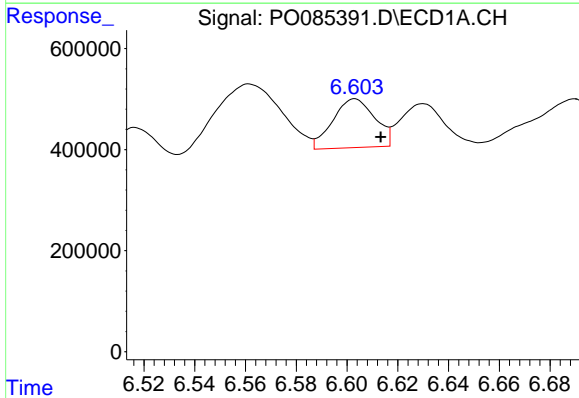
R.T.: 5.859 min
 Delta R.T.: -0.007 min
 Response: 2065476
 Conc: 569.21 ng/ml

Instrument :
 ECD_O
 ClientSampleId :
 31432



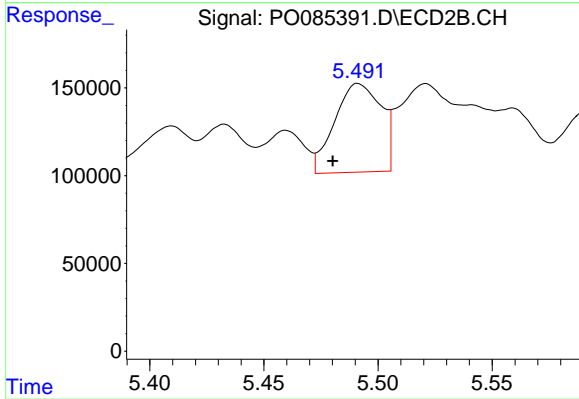
#19 AR-1242-4

R.T.: 4.979 min
 Delta R.T.: 0.022 min
 Response: 816507
 Conc: 785.52 ng/ml



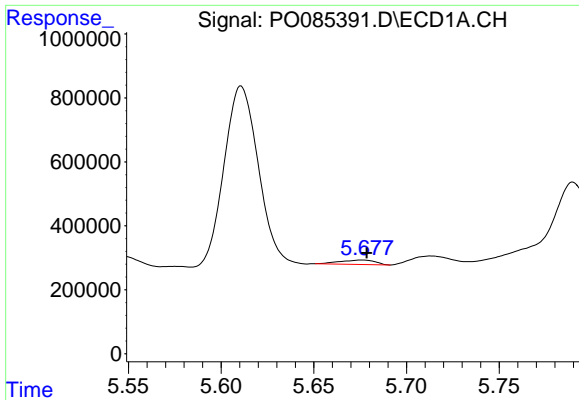
#20 AR-1242-5

R.T.: 6.603 min
 Delta R.T.: -0.010 min
 Response: 1108888
 Conc: 312.07 ng/ml



#20 AR-1242-5

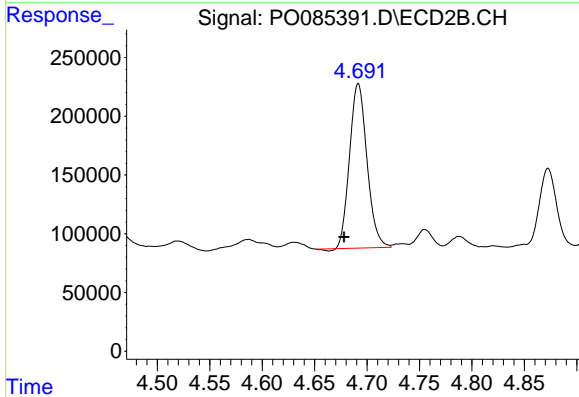
R.T.: 5.491 min
 Delta R.T.: 0.011 min
 Response: 716161
 Conc: 580.29 ng/ml



#21 AR-1248-1

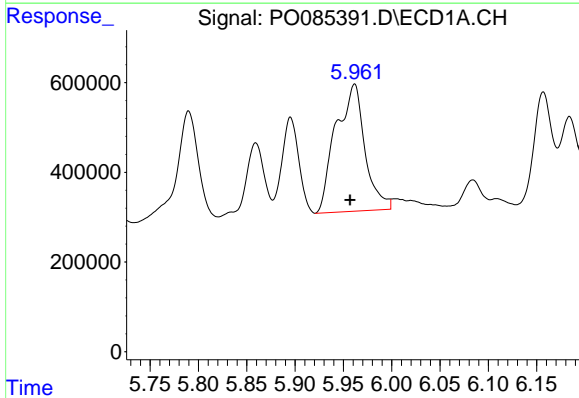
R.T.: 5.676 min
 Delta R.T.: -0.002 min
 Response: 178768
 Conc: 47.96 ng/ml

Instrument :
 ECD_O
 ClientSampleId :
 31432



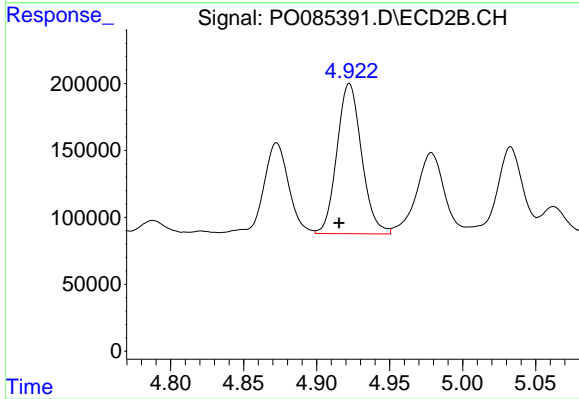
#21 AR-1248-1

R.T.: 4.692 min
 Delta R.T.: 0.014 min
 Response: 1616620
 Conc: 1672.13 ng/ml



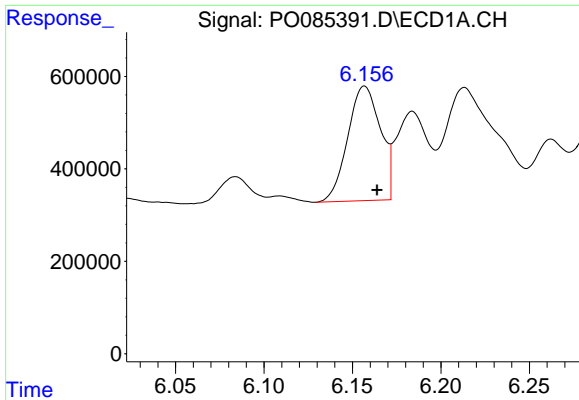
#22 AR-1248-2

R.T.: 5.962 min
 Delta R.T.: 0.005 min
 Response: 5941898
 Conc: 1121.01 ng/ml



#22 AR-1248-2

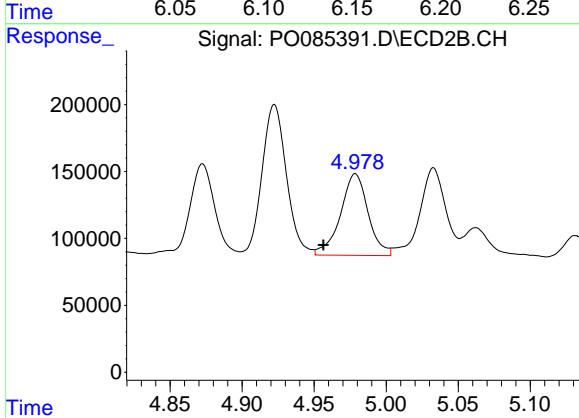
R.T.: 4.922 min
 Delta R.T.: 0.007 min
 Response: 1319249
 Conc: 900.94 ng/ml



#23 AR-1248-3

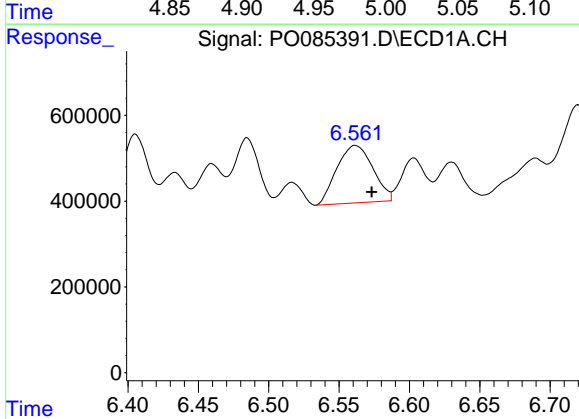
R.T.: 6.157 min
 Delta R.T.: -0.007 min
 Response: 3185560
 Conc: 541.45 ng/ml

Instrument :
 ECD_O
 ClientSampleId :
 31432



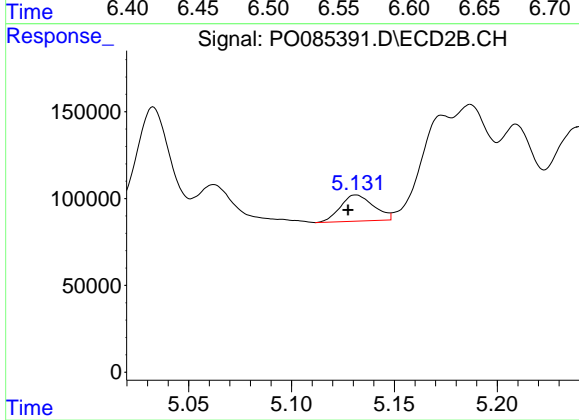
#23 AR-1248-3

R.T.: 4.979 min
 Delta R.T.: 0.022 min
 Response: 816507
 Conc: 532.71 ng/ml



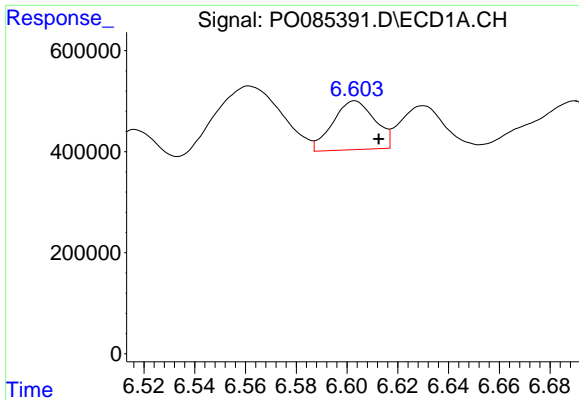
#24 AR-1248-4

R.T.: 6.561 min
 Delta R.T.: -0.012 min
 Response: 2387550
 Conc: 370.34 ng/ml



#24 AR-1248-4

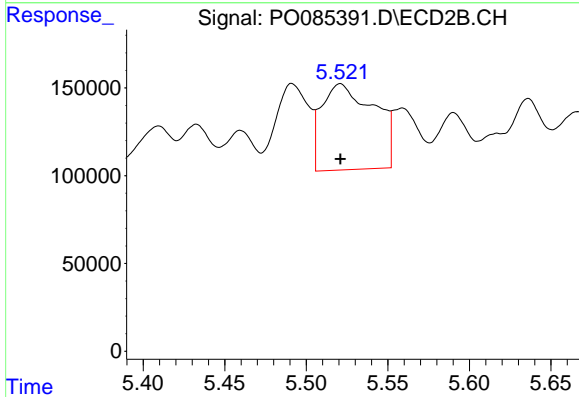
R.T.: 5.131 min
 Delta R.T.: 0.004 min
 Response: 168698
 Conc: 95.98 ng/ml



#25 AR-1248-5

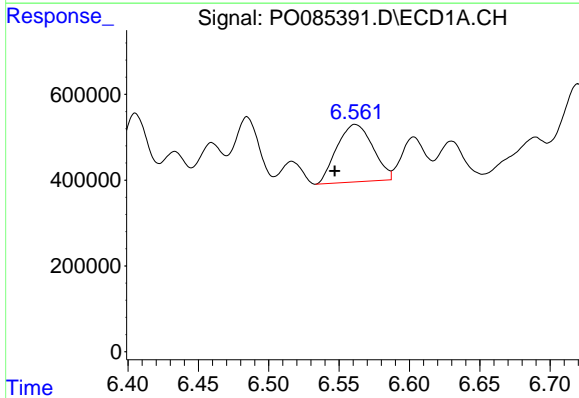
R.T.: 6.603 min
 Delta R.T.: -0.009 min
 Response: 1108888
 Conc: 179.10 ng/ml

Instrument :
 ECD_O
 ClientSampleId :
 31432



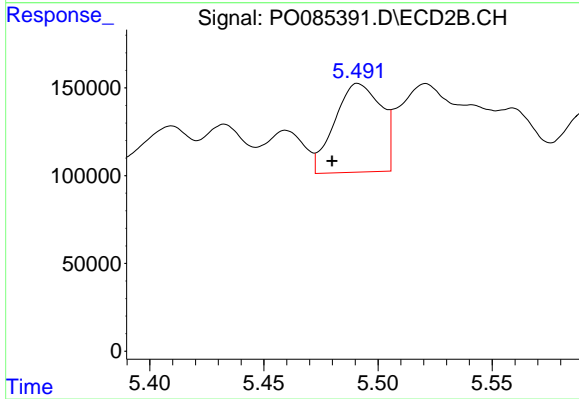
#25 AR-1248-5

R.T.: 5.521 min
 Delta R.T.: 0.000 min
 Response: 1098873
 Conc: 639.77 ng/ml



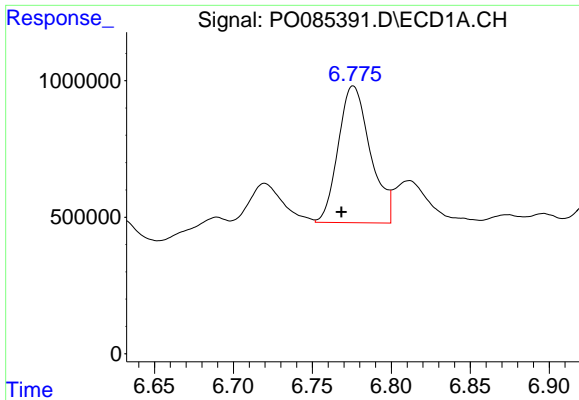
#26 AR-1254-1

R.T.: 6.561 min
 Delta R.T.: 0.015 min
 Response: 2387550
 Conc: 360.26 ng/ml



#26 AR-1254-1

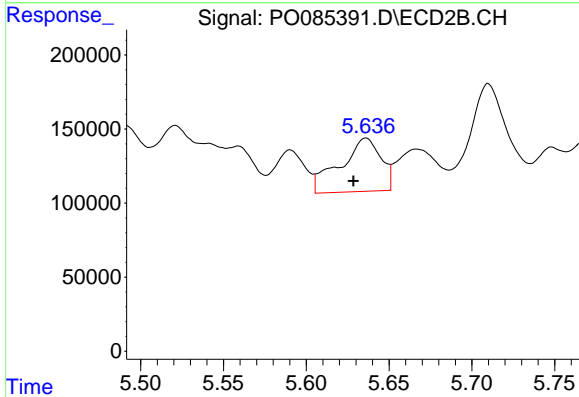
R.T.: 5.491 min
 Delta R.T.: 0.011 min
 Response: 716161
 Conc: 272.49 ng/ml



#27 AR-1254-2

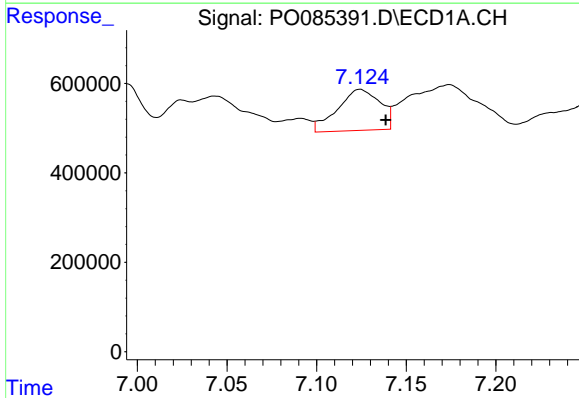
R.T.: 6.776 min
 Delta R.T.: 0.008 min
 Response: 7095986
 Conc: 709.05 ng/ml

Instrument :
 ECD_O
 ClientSampleId :
 31432



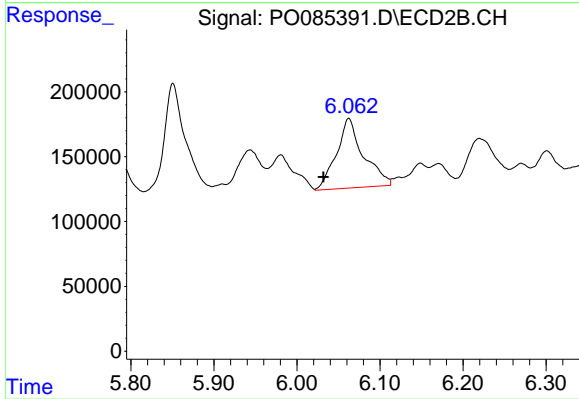
#27 AR-1254-2

R.T.: 5.636 min
 Delta R.T.: 0.008 min
 Response: 613962
 Conc: 263.12 ng/ml



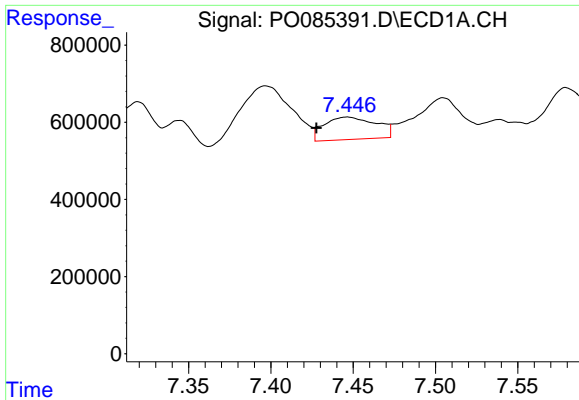
#28 AR-1254-3

R.T.: 7.124 min
 Delta R.T.: -0.014 min
 Response: 1513188
 Conc: 147.03 ng/ml



#28 AR-1254-3

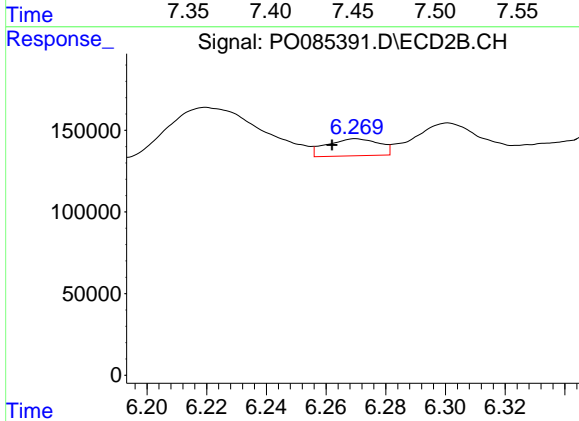
R.T.: 6.062 min
 Delta R.T.: 0.031 min
 Response: 1213694
 Conc: 330.45 ng/ml



#29 AR-1254-4

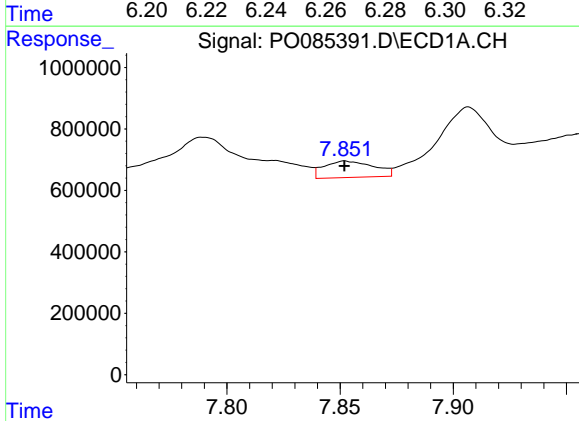
R.T.: 7.446 min
 Delta R.T.: 0.019 min
 Response: 1278780
 Conc: 182.27 ng/ml

Instrument :
 ECD_O
 ClientSampleId :
 31432



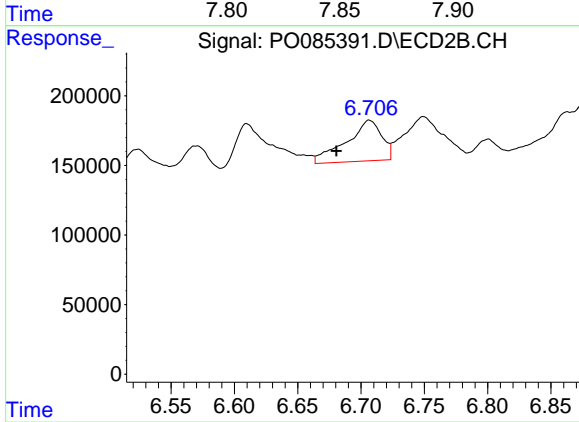
#29 AR-1254-4

R.T.: 6.270 min
 Delta R.T.: 0.008 min
 Response: 127062
 Conc: 57.36 ng/ml



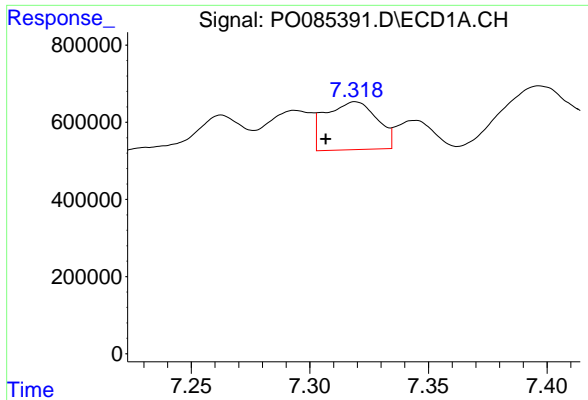
#30 AR-1254-5

R.T.: 7.852 min
 Delta R.T.: 0.000 min
 Response: 818869
 Conc: 107.02 ng/ml



#30 AR-1254-5

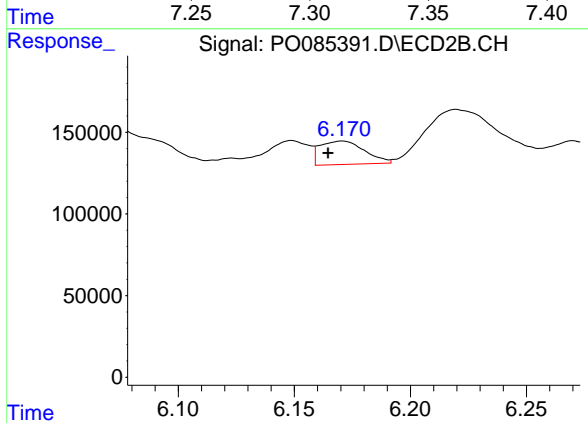
R.T.: 6.707 min
 Delta R.T.: 0.026 min
 Response: 571661
 Conc: 175.75 ng/ml



#31 AR-1260-1

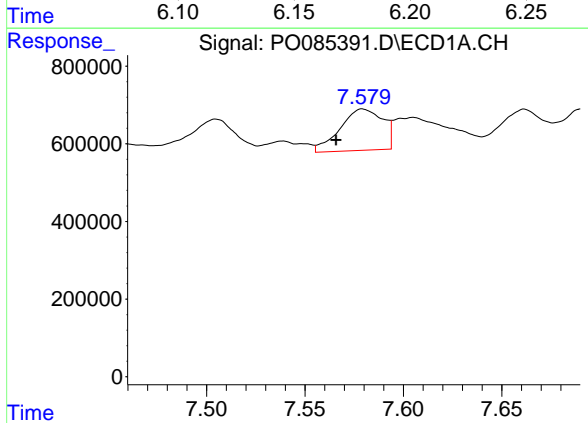
R.T.: 7.319 min
 Delta R.T.: 0.013 min
 Response: 1889159
 Conc: 273.79 ng/ml

Instrument :
 ECD_O
 ClientSampleId :
 31432



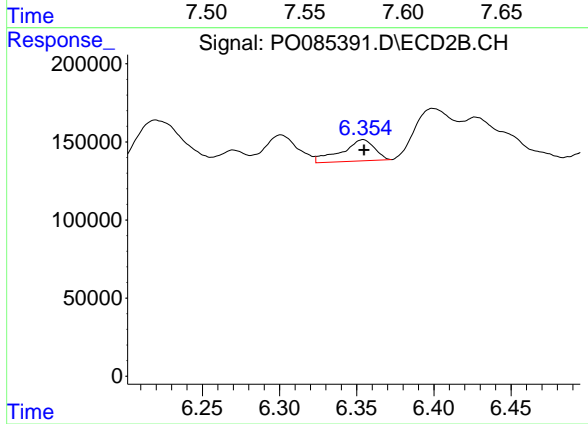
#31 AR-1260-1

R.T.: 6.171 min
 Delta R.T.: 0.006 min
 Response: 192098
 Conc: 81.03 ng/ml



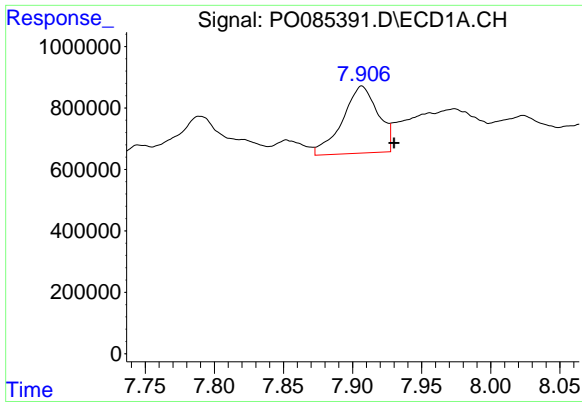
#32 AR-1260-2

R.T.: 7.579 min
 Delta R.T.: 0.013 min
 Response: 1606457
 Conc: 205.36 ng/ml



#32 AR-1260-2

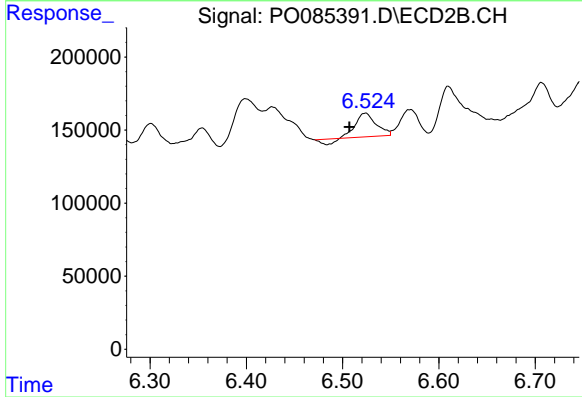
R.T.: 6.354 min
 Delta R.T.: 0.000 min
 Response: 202432
 Conc: 72.52 ng/ml



#33 AR-1260-3

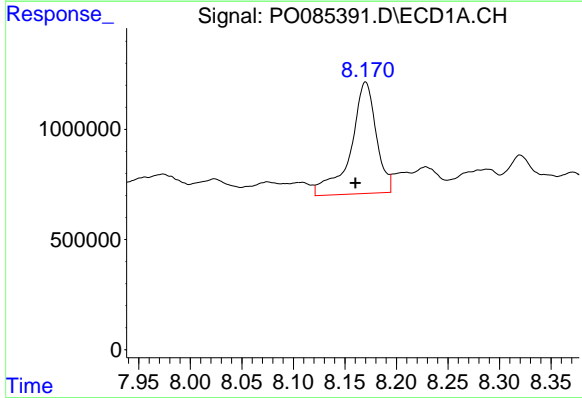
R.T.: 7.907 min
 Delta R.T.: -0.023 min
 Response: 3906312
 Conc: 665.06 ng/ml

Instrument :
 ECD_O
 ClientSampleId :
 31432



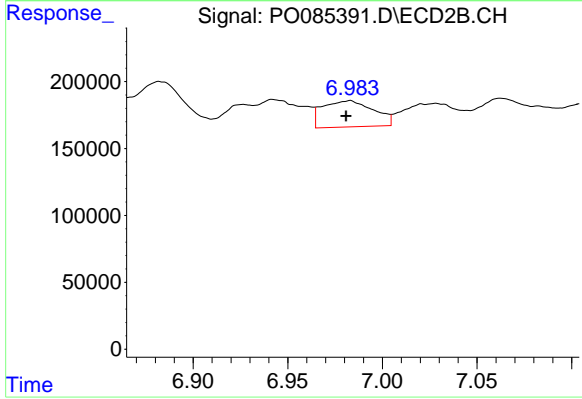
#33 AR-1260-3

R.T.: 6.524 min
 Delta R.T.: 0.017 min
 Response: 212140
 Conc: 80.69 ng/ml



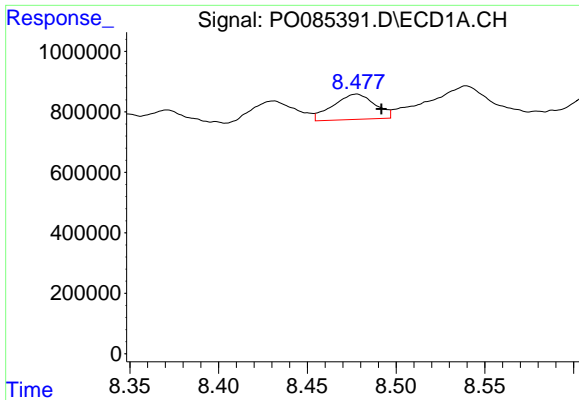
#34 AR-1260-4

R.T.: 8.170 min
 Delta R.T.: 0.010 min
 Response: 8703450
 Conc: 1260.09 ng/ml



#34 AR-1260-4

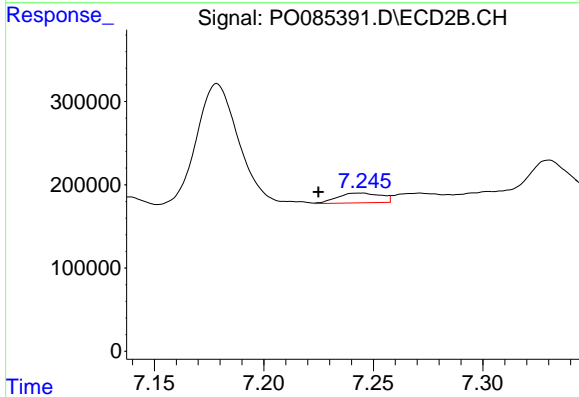
R.T.: 6.983 min
 Delta R.T.: 0.002 min
 Response: 366977
 Conc: 163.84 ng/ml



#35 AR-1260-5

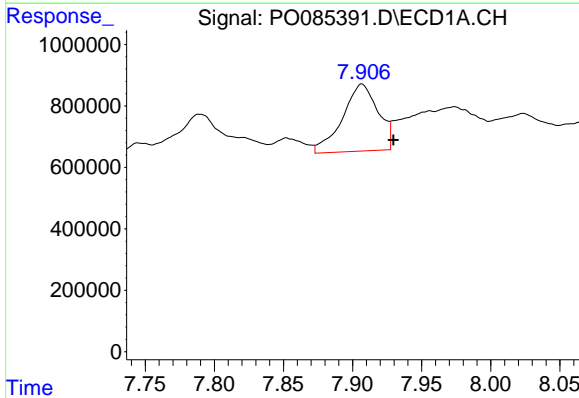
R.T.: 8.478 min
 Delta R.T.: -0.014 min
 Response: 1373001
 Conc: 97.73 ng/ml

Instrument :
 ECD_O
 ClientSampleId :
 31432



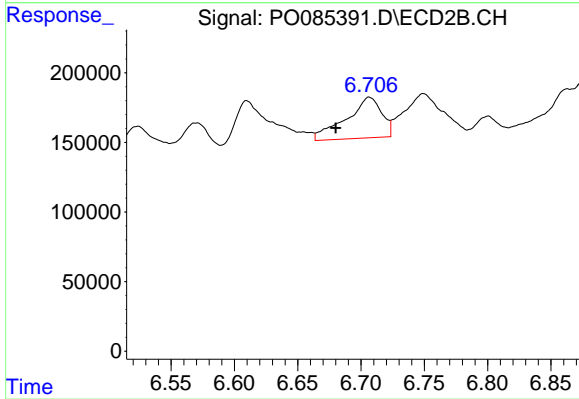
#35 AR-1260-5

R.T.: 7.244 min
 Delta R.T.: 0.019 min
 Response: 162838
 Conc: 32.32 ng/ml



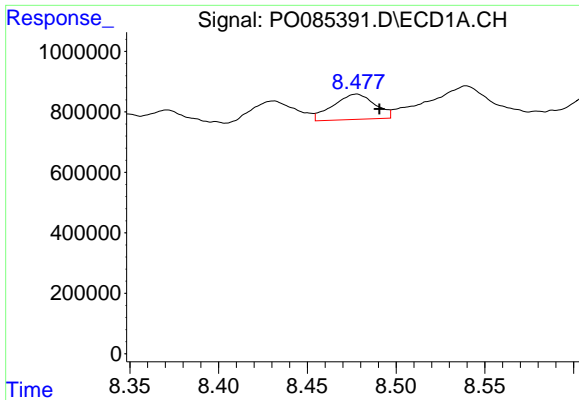
#36 AR-1262-1

R.T.: 7.907 min
 Delta R.T.: -0.023 min
 Response: 3906312
 Conc: 432.50 ng/ml



#36 AR-1262-1

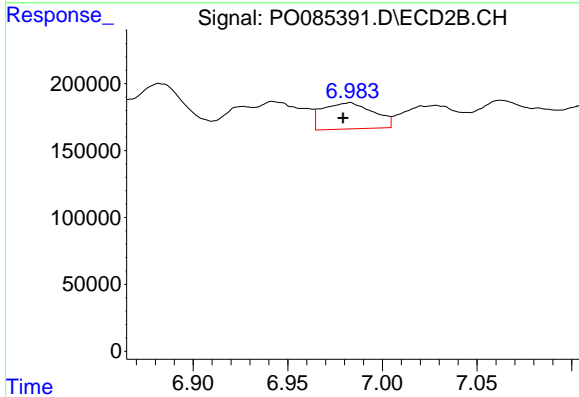
R.T.: 6.707 min
 Delta R.T.: 0.027 min
 Response: 571661
 Conc: 332.94 ng/ml



#37 AR-1262-2

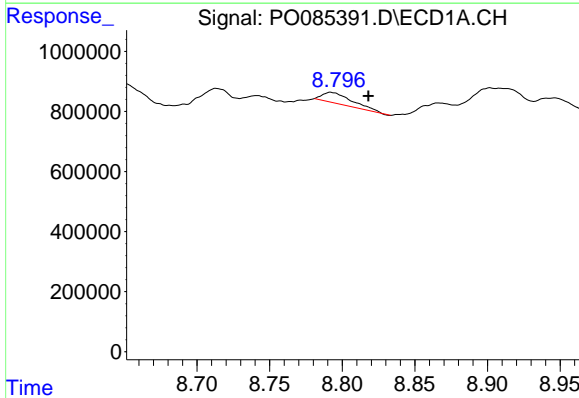
R.T.: 8.478 min
 Delta R.T.: -0.013 min
 Response: 1373001
 Conc: 86.17 ng/ml

Instrument :
 ECD_O
 ClientSampleId :
 31432



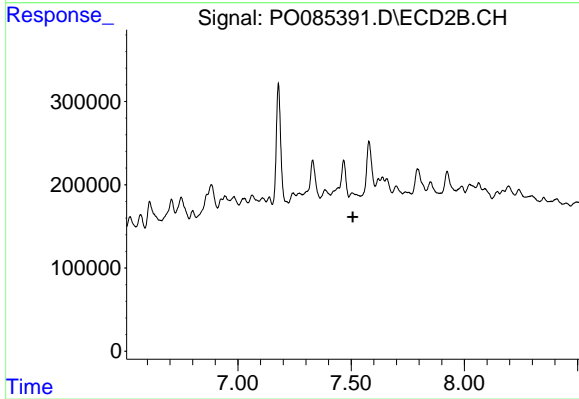
#37 AR-1262-2

R.T.: 6.983 min
 Delta R.T.: 0.004 min
 Response: 366977
 Conc: 128.14 ng/ml



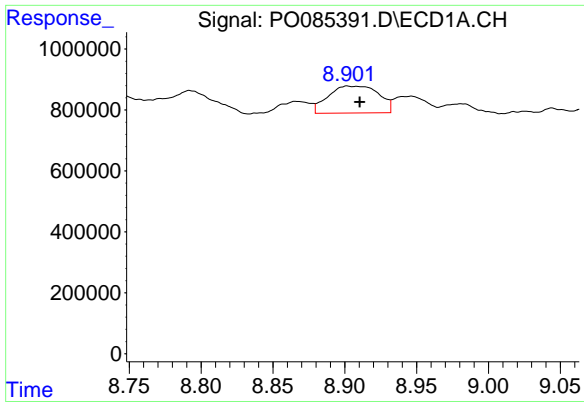
#38 AR-1262-3

R.T.: 8.792 min
 Delta R.T.: -0.026 min
 Response: 516361
 Conc: 49.96 ng/ml



#38 AR-1262-3

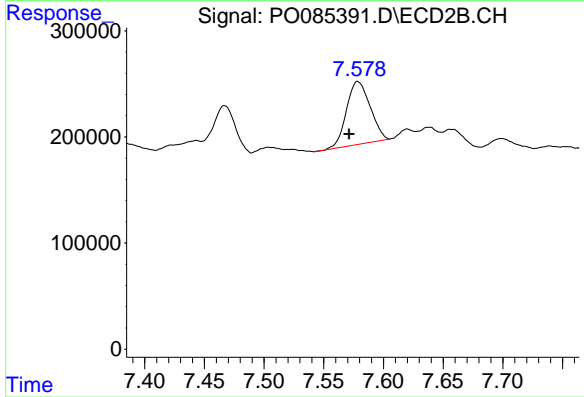
R.T.: 7.504 min
 Delta R.T.: -0.003 min
 Response: -239378
 Conc: N.D.



#39 AR-1262-4

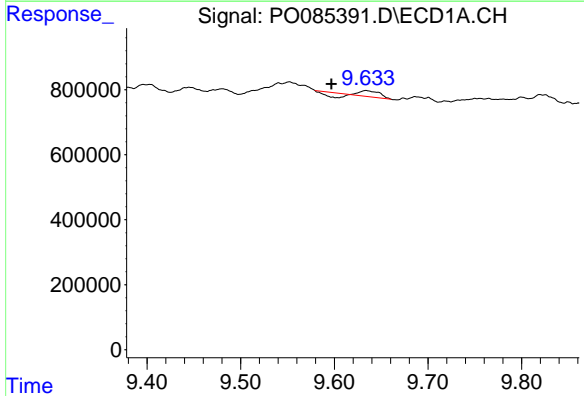
R.T.: 8.902 min
 Delta R.T.: -0.008 min
 Response: 2160840
 Conc: 460.06 ng/ml

Instrument :
 ECD_O
 ClientSampleId :
 31432



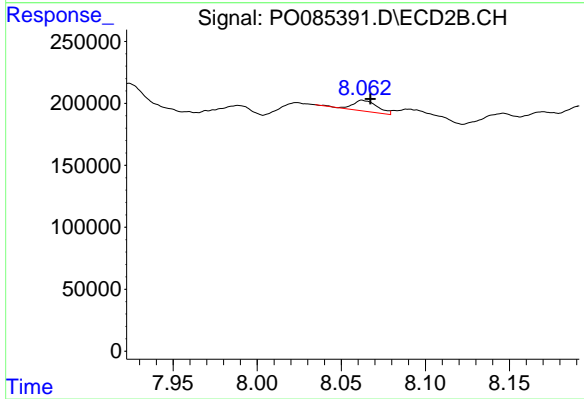
#39 AR-1262-4

R.T.: 7.579 min
 Delta R.T.: 0.007 min
 Response: 815202
 Conc: 204.28 ng/ml



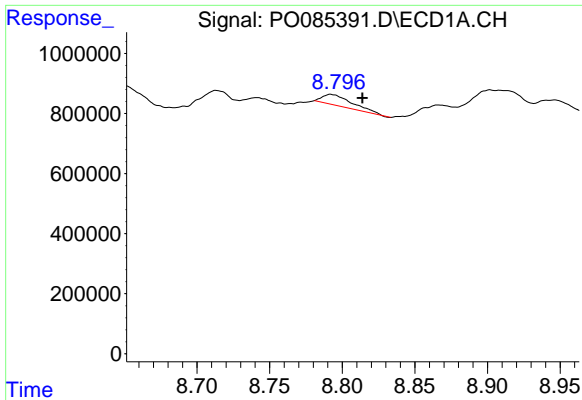
#40 AR-1262-5

R.T.: 9.634 min
 Delta R.T.: 0.037 min
 Response: 108961
 Conc: 20.49 ng/ml



#40 AR-1262-5

R.T.: 8.063 min
 Delta R.T.: -0.005 min
 Response: 90419
 Conc: 49.32 ng/ml

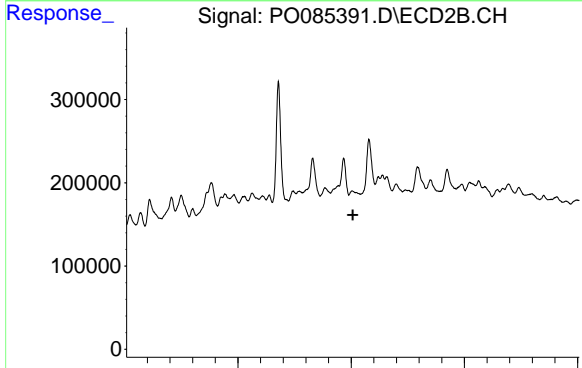


#41 AR-1268-1

R.T.: 8.792 min
 Delta R.T.: -0.022 min
 Response: 516361
 Conc: 26.76 ng/ml

Instrument :
 ECD_O
 ClientSampleId :
 31432

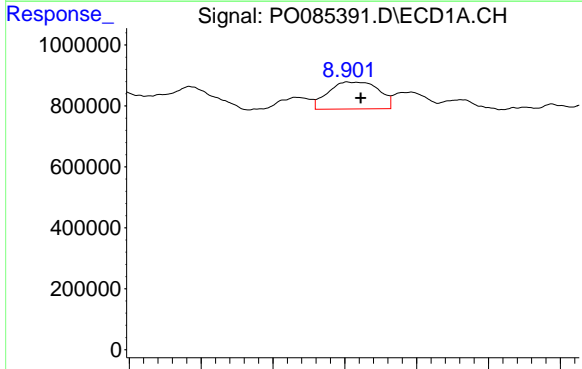
Time 8.70 8.75 8.80 8.85 8.90 8.95



#41 AR-1268-1

R.T.: 7.504 min
 Delta R.T.: -0.004 min
 Response: -239378
 Conc: N.D.

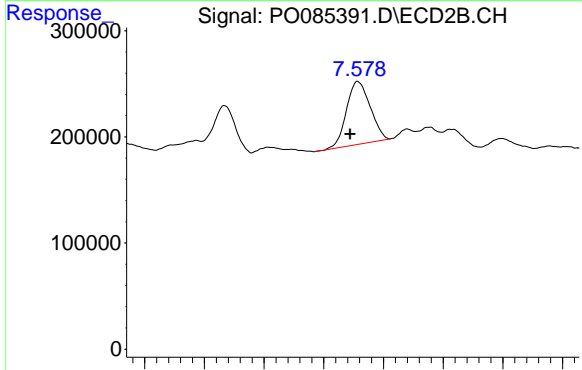
Time 7.00 7.50 8.00



#42 AR-1268-2

R.T.: 8.902 min
 Delta R.T.: -0.009 min
 Response: 2160840
 Conc: 124.36 ng/ml

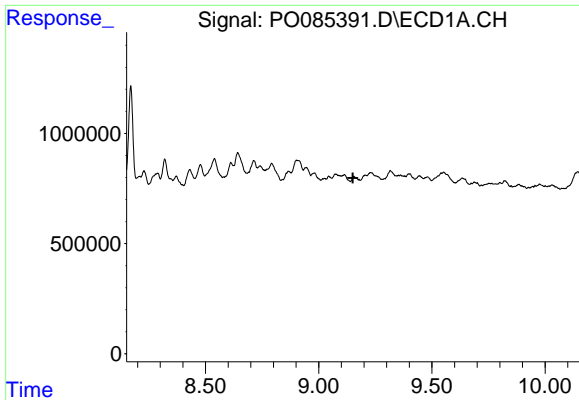
Time 8.75 8.80 8.85 8.90 8.95 9.00 9.05



#42 AR-1268-2

R.T.: 7.579 min
 Delta R.T.: 0.007 min
 Response: 815202
 Conc: 138.31 ng/ml

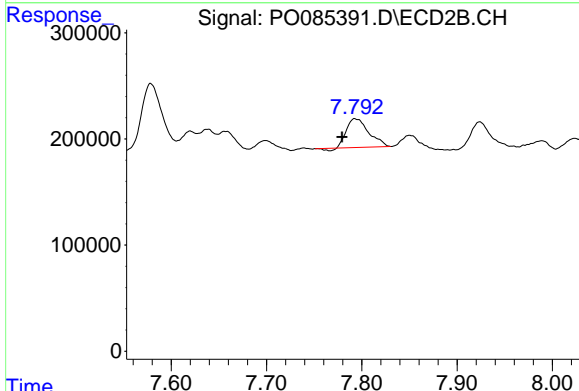
Time 7.40 7.45 7.50 7.55 7.60 7.65 7.70



#43 AR-1268-3

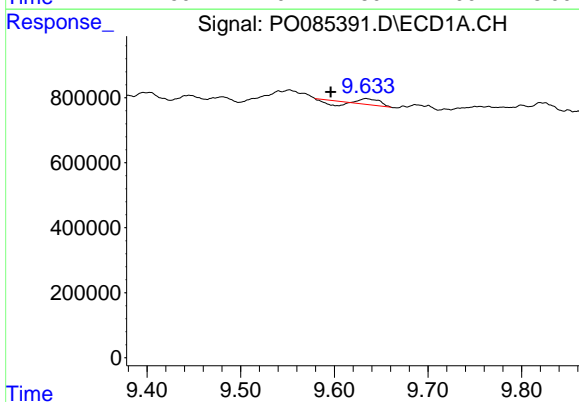
R.T.: 9.156 min
 Delta R.T.: 0.004 min
 Response: -20877
 Conc: N.D.

Instrument : ECD_O
 ClientSampleId : 31432



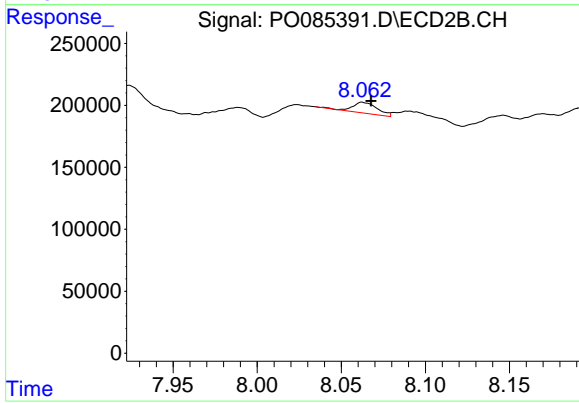
#43 AR-1268-3

R.T.: 7.793 min
 Delta R.T.: 0.013 min
 Response: 436704
 Conc: 87.90 ng/ml



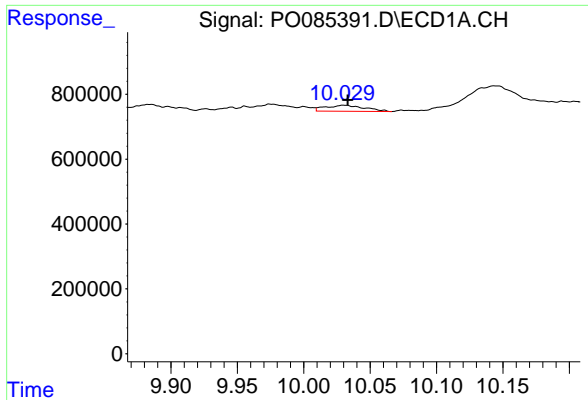
#44 AR-1268-4

R.T.: 9.634 min
 Delta R.T.: 0.038 min
 Response: 108961
 Conc: 17.86 ng/ml



#44 AR-1268-4

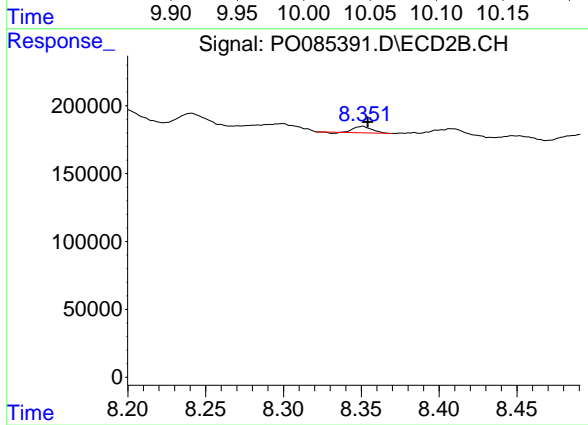
R.T.: 8.063 min
 Delta R.T.: -0.005 min
 Response: 90419
 Conc: 42.61 ng/ml



#45 AR-1268-5

R.T.: 10.030 min
 Delta R.T.: -0.003 min
 Response: 376924
 Conc: 7.81 ng/ml

Instrument :
 ECD_O
 ClientSampleId :
 31432



#45 AR-1268-5

R.T.: 8.351 min
 Delta R.T.: -0.003 min
 Response: 36960
 Conc: 2.64 ng/ml