

Data Path : Z:\pestpcbsrv\HPCHEM1\ECD_0\Data\P0031622\
 Data File : P0085436.D
 Signal(s) : Signal #1: ECD1A.CH Signal #2: ECD2B.CH
 Acq On : 17 Mar 2022 4:22
 Operator : YP\AJ
 Sample : PB143396BS
 Misc :
 ALS Vial : 31 Sample Multiplier: 1

Instrument :
 ECD_0
 ClientSampleId :
 PB143396BS

Integration File signal 1: autoint1.e
 Integration File signal 2: autoint2.e
 Quant Time: Mar 17 04:44:52 2022
 Quant Method : Z:\pestpcbsrv\HPCHEM1\ECD_0\methods\P0031522.M
 Quant Title : GC EXTRACTABLES
 QLast Update : Wed Mar 16 04:43:31 2022
 Response via : Initial Calibration
 Integrator: ChemStation 6890 Scale Mode: Small noise peaks clipped

Volume Inj. : 2 µl
 Signal #1 Phase : ZB-MR2 Signal #2 Phase: ZB-MR2
 Signal #1 Info : 30Mx0.32mmx 0.50µ Signal #2 Info : 30M x 0.32mm x 0.25µm

Compound	RT#1	RT#2	Resp#1	Resp#2	ng/ml	ng/ml

System Monitoring Compounds						
1) SA Tetrachlo...	4.491	3.590	3490897	844827	17.072	19.719
2) SA Decachlor...	10.393	8.605	2161831	653068	17.984	17.010
Target Compounds						
3) L1 AR-1016-1	5.678	4.677	2435007	668371	386.930	418.811
4) L1 AR-1016-2	5.701	4.695	3450087	954958	376.648	412.729
5) L1 AR-1016-3	5.765	4.871	2079465	520646	382.031	416.595
6) L1 AR-1016-4	5.865	4.914	1689398	426641	382.993	390.826
7) L1 AR-1016-5	6.164	5.127	1651140	536757	388.854	396.836
31) L7 AR-1260-1	7.305	6.162	2701262	1015727	391.488	428.428
32) L7 AR-1260-2	7.565	6.352	3154658	1189112	403.273	425.963
33) L7 AR-1260-3	7.929	6.505	1941001	1094141	330.461	416.151 #
34) L7 AR-1260-4	8.160	6.979	2306195	788237	333.891	351.921
35) L7 AR-1260-5	8.492	7.223	4515135	1780640	321.382	353.455

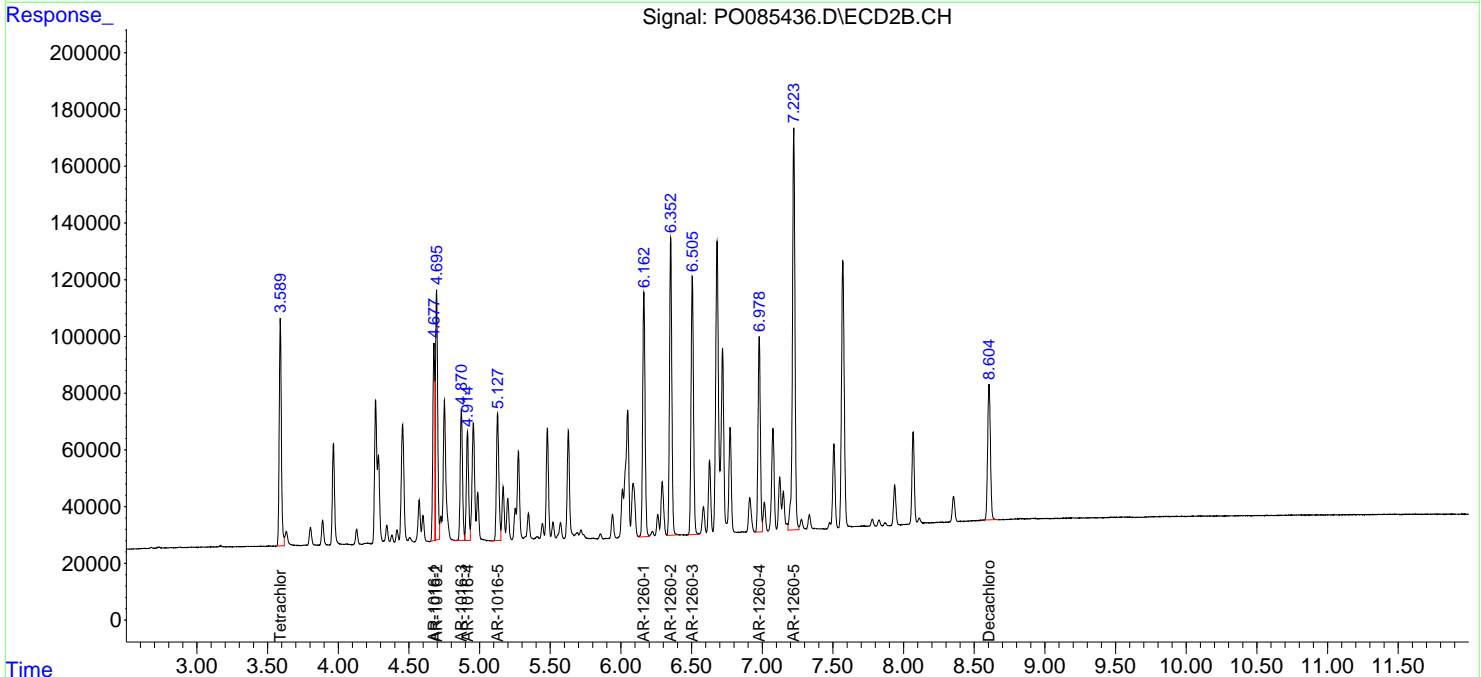
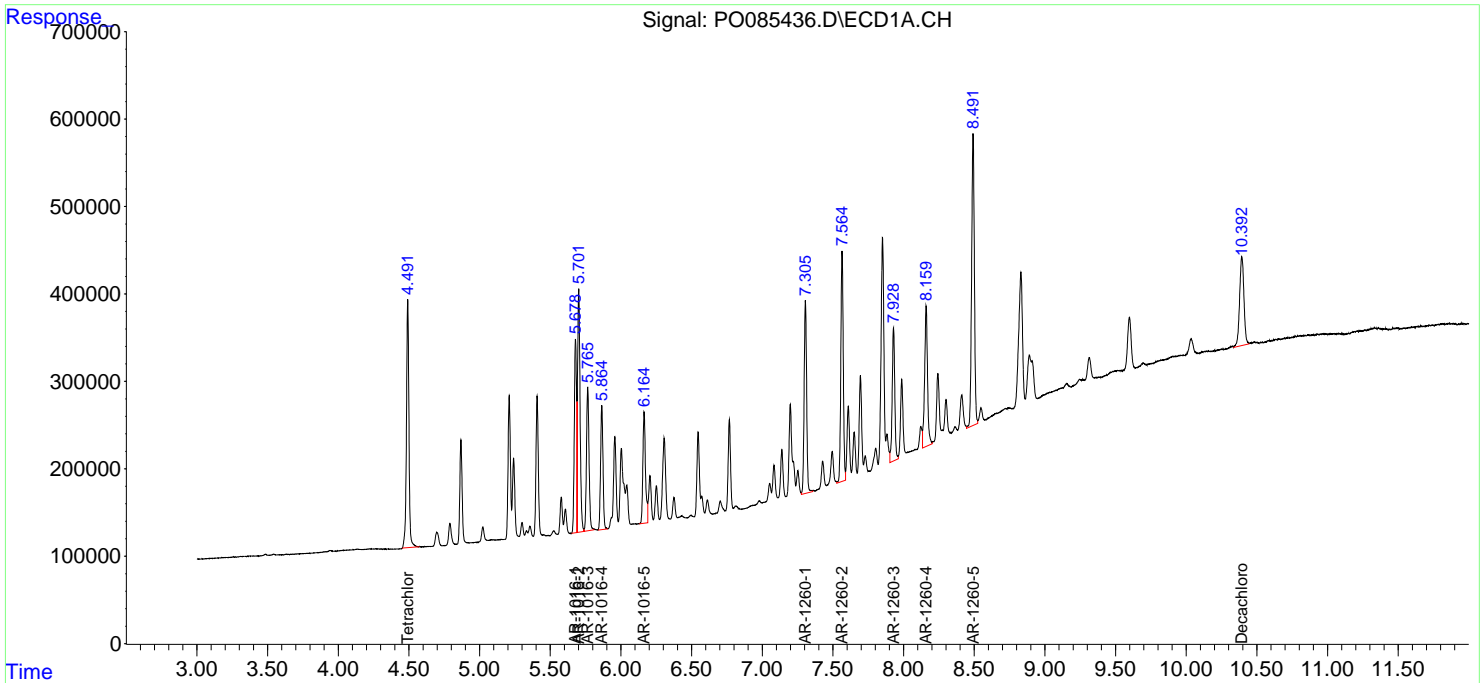
(f)=RT Delta > 1/2 Window (#)=Amounts differ by > 25% (m)=manual int.

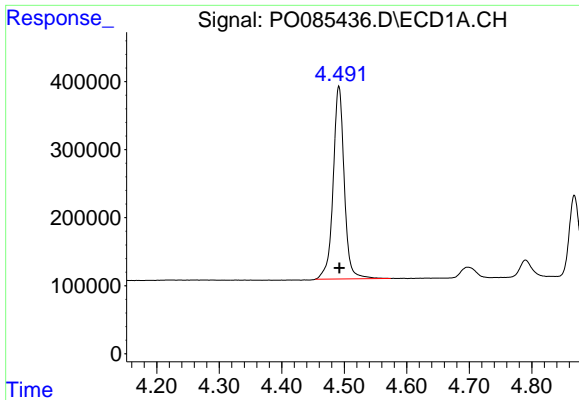
Data Path : Z:\pestpcbsrv\HPCHEM1\ECD_O\Data\P0031622\
 Data File : P0085436.D
 Signal(s) : Signal #1: ECD1A.CH Signal #2: ECD2B.CH
 Acq On : 17 Mar 2022 4:22
 Operator : YP\AJ
 Sample : PB143396BS
 Misc :
 ALS Vial : 31 Sample Multiplier: 1

Instrument :
 ECD_O
 ClientSampleId :
 PB143396BS

Integration File signal 1: autoint1.e
 Integration File signal 2: autoint2.e
 Quant Time: Mar 17 04:44:52 2022
 Quant Method : Z:\pestpcbsrv\HPCHEM1\ECD_O\methods\P0031522.M
 Quant Title : GC EXTRACTABLES
 QLast Update : Wed Mar 16 04:43:31 2022
 Response via : Initial Calibration
 Integrator: ChemStation 6890 Scale Mode: Small noise peaks clipped

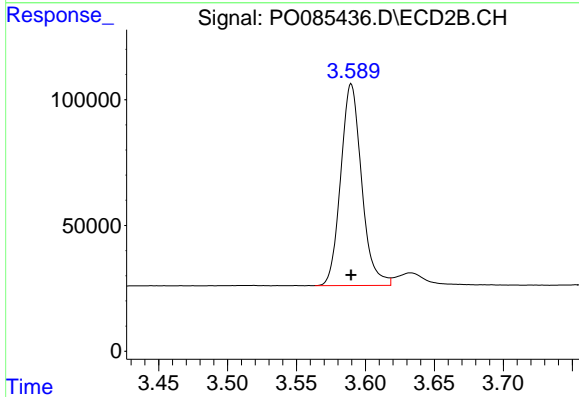
Volume Inj. : 2 µl
 Signal #1 Phase : ZB-MR1 Signal #2 Phase: ZB-MR2
 Signal #1 Info : 30Mx0.32mmx 0.50µ Signal #2 Info : 30M x 0.32mm x 0.25µm



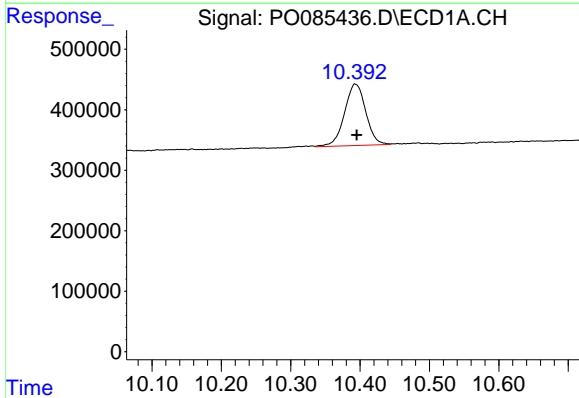


#1 Tetrachloro-m-xylene
 R.T.: 4.491 min
 Delta R.T.: 0.000 min
 Response: 3490897
 Conc: 17.07 ng/ml

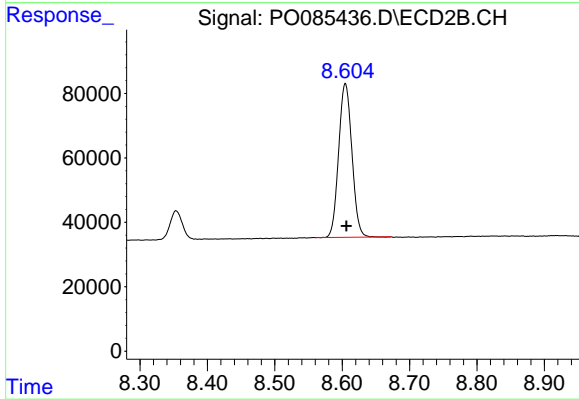
Instrument :
 ECD_O
 ClientSampleId :
 PB143396BS



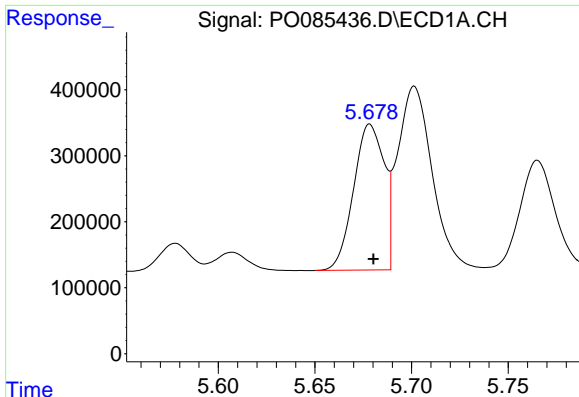
#1 Tetrachloro-m-xylene
 R.T.: 3.590 min
 Delta R.T.: 0.000 min
 Response: 844827
 Conc: 19.72 ng/ml



#2 Decachlorobiphenyl
 R.T.: 10.393 min
 Delta R.T.: -0.002 min
 Response: 2161831
 Conc: 17.98 ng/ml



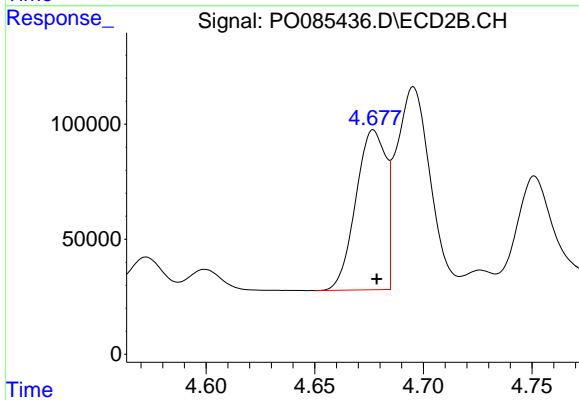
#2 Decachlorobiphenyl
 R.T.: 8.605 min
 Delta R.T.: -0.002 min
 Response: 653068
 Conc: 17.01 ng/ml



#3 AR-1016-1

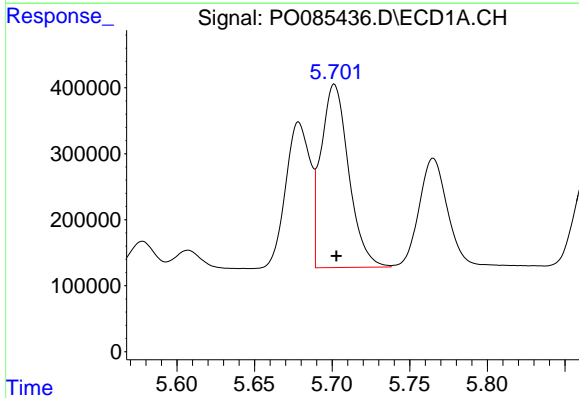
R.T.: 5.678 min
 Delta R.T.: -0.002 min
 Response: 2435007
 Conc: 386.93 ng/ml

Instrument :
 ECD_O
 ClientSampleId :
 PB143396BS



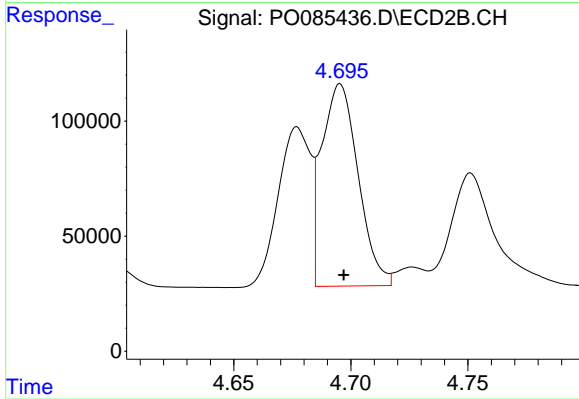
#3 AR-1016-1

R.T.: 4.677 min
 Delta R.T.: -0.002 min
 Response: 668371
 Conc: 418.81 ng/ml



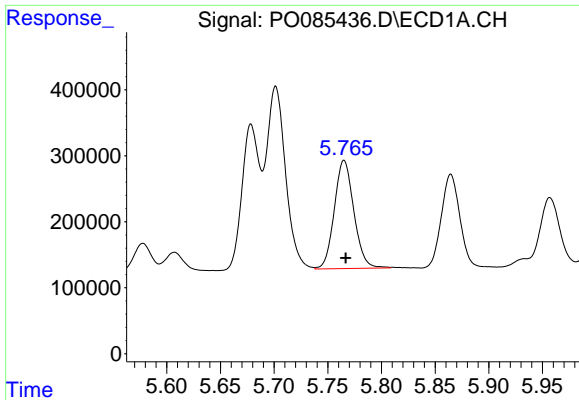
#4 AR-1016-2

R.T.: 5.701 min
 Delta R.T.: -0.001 min
 Response: 3450087
 Conc: 376.65 ng/ml



#4 AR-1016-2

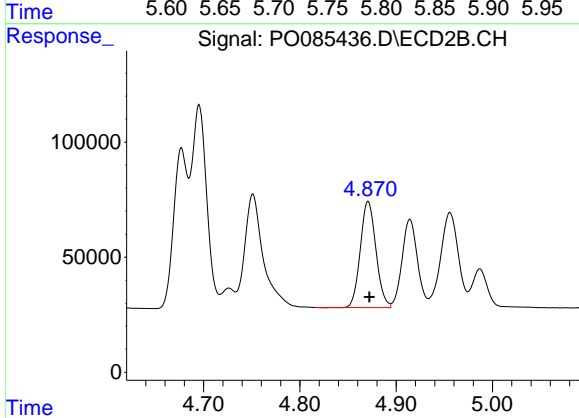
R.T.: 4.695 min
 Delta R.T.: -0.002 min
 Response: 954958
 Conc: 412.73 ng/ml



#5 AR-1016-3

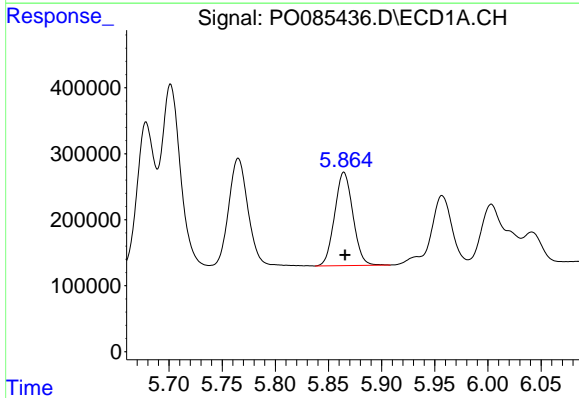
R.T.: 5.765 min
 Delta R.T.: -0.002 min
 Response: 2079465
 Conc: 382.03 ng/ml

Instrument :
 ECD_O
 ClientSampleId :
 PB143396BS



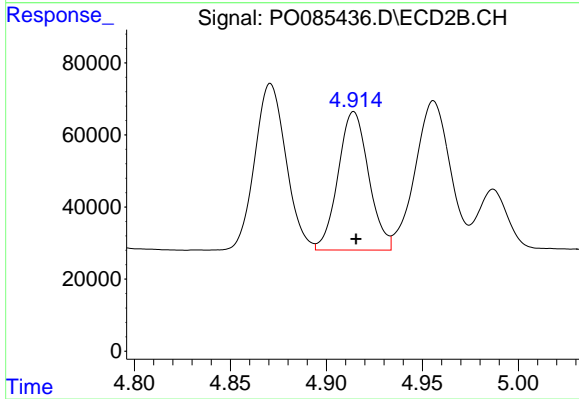
#5 AR-1016-3

R.T.: 4.871 min
 Delta R.T.: -0.001 min
 Response: 520646
 Conc: 416.60 ng/ml



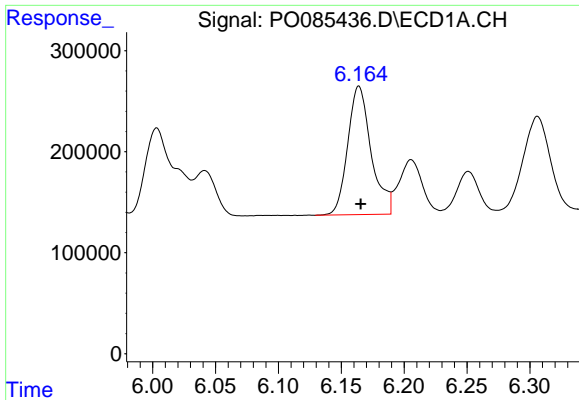
#6 AR-1016-4

R.T.: 5.865 min
 Delta R.T.: -0.001 min
 Response: 1689398
 Conc: 382.99 ng/ml



#6 AR-1016-4

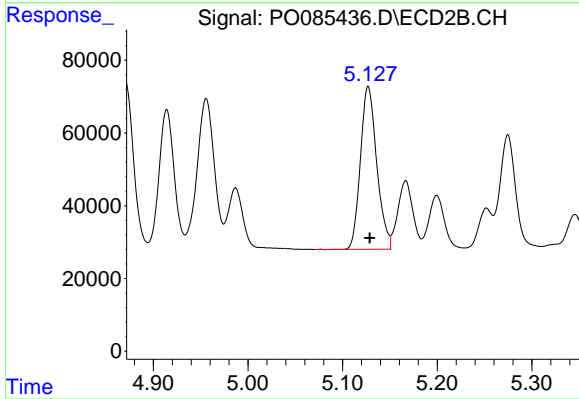
R.T.: 4.914 min
 Delta R.T.: -0.001 min
 Response: 426641
 Conc: 390.83 ng/ml



#7 AR-1016-5

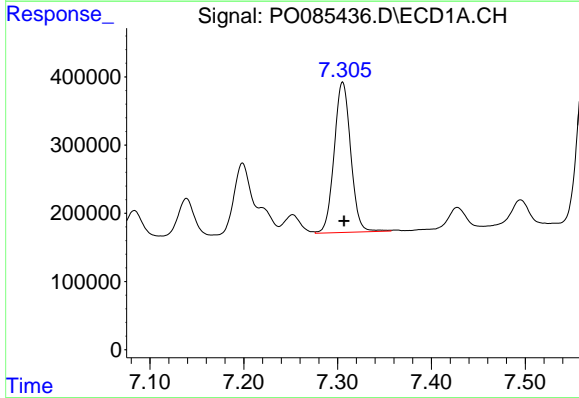
R.T.: 6.164 min
 Delta R.T.: -0.001 min
 Response: 1651140
 Conc: 388.85 ng/ml

Instrument :
 ECD_O
 ClientSampleId :
 PB143396BS



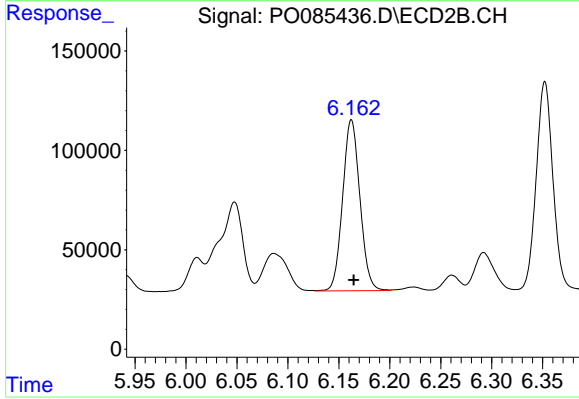
#7 AR-1016-5

R.T.: 5.127 min
 Delta R.T.: -0.002 min
 Response: 536757
 Conc: 396.84 ng/ml



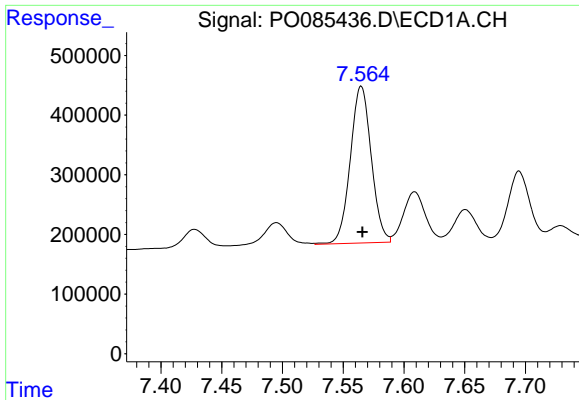
#31 AR-1260-1

R.T.: 7.305 min
 Delta R.T.: -0.001 min
 Response: 2701262
 Conc: 391.49 ng/ml



#31 AR-1260-1

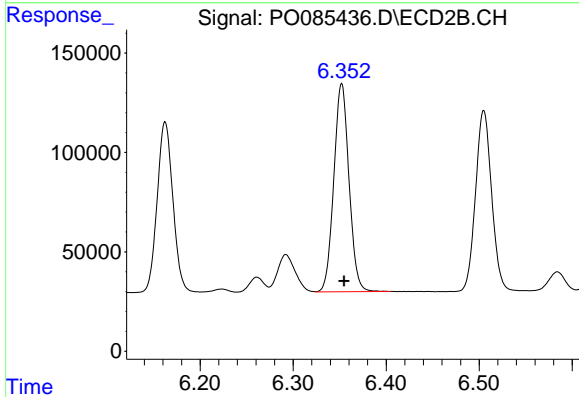
R.T.: 6.162 min
 Delta R.T.: -0.002 min
 Response: 1015727
 Conc: 428.43 ng/ml



#32 AR-1260-2

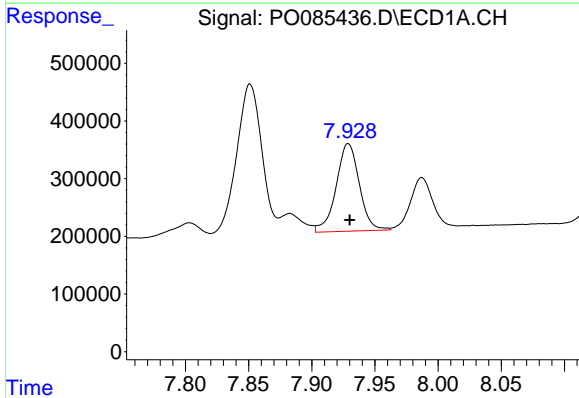
R.T.: 7.565 min
 Delta R.T.: 0.000 min
 Response: 3154658
 Conc: 403.27 ng/ml

Instrument :
 ECD_O
 ClientSampleId :
 PB143396BS



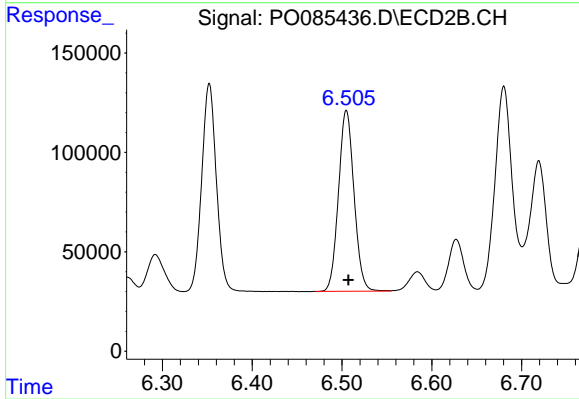
#32 AR-1260-2

R.T.: 6.352 min
 Delta R.T.: -0.003 min
 Response: 1189112
 Conc: 425.96 ng/ml



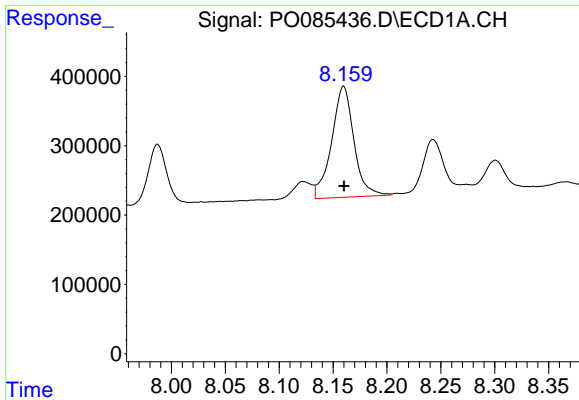
#33 AR-1260-3

R.T.: 7.929 min
 Delta R.T.: -0.001 min
 Response: 1941001
 Conc: 330.46 ng/ml



#33 AR-1260-3

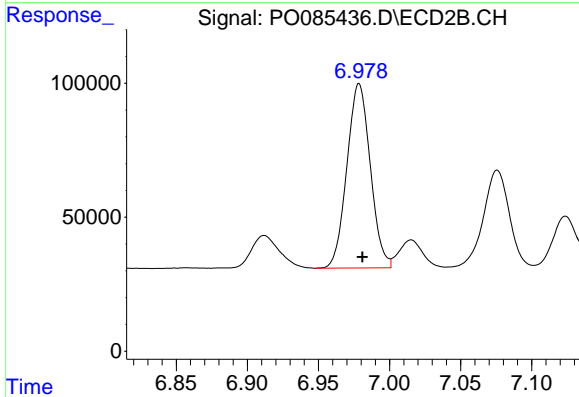
R.T.: 6.505 min
 Delta R.T.: -0.002 min
 Response: 1094141
 Conc: 416.15 ng/ml



#34 AR-1260-4

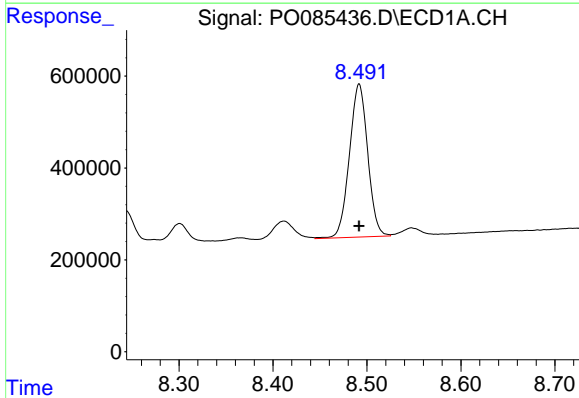
R.T.: 8.160 min
 Delta R.T.: 0.000 min
 Response: 2306195
 Conc: 333.89 ng/ml

Instrument :
 ECD_O
 ClientSampleId :
 PB143396BS



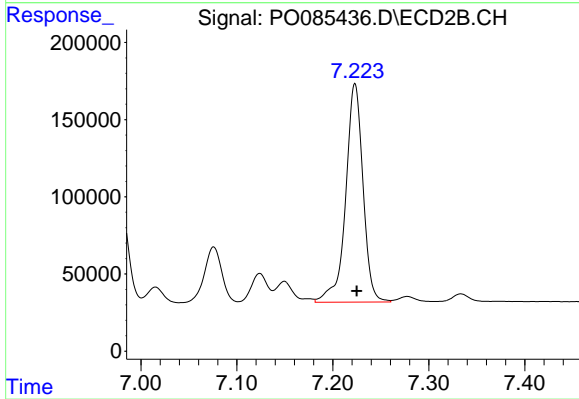
#34 AR-1260-4

R.T.: 6.979 min
 Delta R.T.: -0.002 min
 Response: 788237
 Conc: 351.92 ng/ml



#35 AR-1260-5

R.T.: 8.492 min
 Delta R.T.: 0.000 min
 Response: 4515135
 Conc: 321.38 ng/ml



#35 AR-1260-5

R.T.: 7.223 min
 Delta R.T.: -0.002 min
 Response: 1780640
 Conc: 353.45 ng/ml