

Data Path : Z:\pestpcbsrv\HPCHEM\ECD_0\Data\P0031623\
 Data File : P0093215.D
 Signal(s) : Signal #1: ECD1A.ch Signal #2: ECD2B.ch
 Acq On : 16 Mar 2023 15:21
 Operator : YP/AJ
 Sample : 01928-01
 Misc :
 ALS Vial : 13 Sample Multiplier: 1

Instrument :
 ECD_0
 ClientSampleId :

Integration File signal 1: autoint1.e
 Integration File signal 2: autoint2.e
 Quant Time: Mar 16 21:55:44 2023
 Quant Method : Z:\pestpcbsrv\HPCHEM\ECD_0\methods\P0031323.M
 Quant Title : GC EXTRACTABLES
 QLast Update : Tue Mar 14 05:32:59 2023
 Response via : Initial Calibration
 Integrator: ChemStation

Volume Inj. : 2 µl
 Signal #1 Phase : ZB-MR1 Signal #2 Phase: ZB-MR2
 Signal #1 Info : 30Mx0.32mmx 0.50µ Signal #2 Info : 30M x 0.32mm x 0.25µm

Compound	RT#1	RT#2	Resp#1	Resp#2	ng/ml	ng/ml

System Monitoring Compounds						
1) SA Tetrachlo...	4.428	3.633	64559901	22512416	20.616	19.960
2) SA Decachlor...	10.263	8.665	36648802	17550260	16.933	17.924
Target Compounds						
3) L1 AR-1016-1	5.604	0.000	622842	0	6.518	N.D. #
4) L1 AR-1016-2	5.633	0.000	435993	0	3.053	N.D. #
5) L1 AR-1016-3	5.695	0.000	218868	0	2.412	N.D. #
7) L1 AR-1016-5	6.090	0.000	112519	0	1.503	N.D. #
8) L2 AR-1221-1	4.635	0.000	17837114	0	441.268	N.D. #
9) L2 AR-1221-2	4.735	3.923	1602317	2085183	52.873	190.939 #
10) L2 AR-1221-3	4.793	4.016	18941	79880	0.207	2.345 #
11) L3 AR-1232-1	4.793	4.016	18941	79880	0.259	2.828 #
12) L3 AR-1232-2	5.349	0.000	108180	0	3.009	N.D. #
13) L3 AR-1232-3	5.633	0.000	435993	0	6.660	N.D. #
15) L3 AR-1232-5	5.889	0.000	202226	0	7.288	N.D. #
16) L4 AR-1242-1	5.604	0.000	622842	0	7.599	N.D. #
17) L4 AR-1242-2	5.633	0.000	435993	0	3.633	N.D. #
18) L4 AR-1242-3	5.695	0.000	218868	0	2.852	N.D. #
20) L4 AR-1242-5	6.540	0.000	286066	0	4.578	N.D. #
21) L5 AR-1248-1	5.604	0.000	622842	0	10.019	N.D. #
22) L5 AR-1248-2	5.889	0.000	202226	0	2.117	N.D. #
23) L5 AR-1248-3	6.090	0.000	112519	0	1.081	N.D. #
24) L5 AR-1248-4	6.503	0.000	965339	0	9.480	N.D. #
25) L5 AR-1248-5	6.540	0.000	286066	0	2.795	N.D. #
26) L6 AR-1254-1	6.503	0.000	965339	0	8.261	N.D. #
27) L6 AR-1254-2	6.688	0.000	201509	0	1.179	N.D. #
28) L6 AR-1254-3	7.059	0.000	570410	0	3.431	N.D. #
30) L6 AR-1254-5	7.776	0.000	1390223	0	10.267	N.D. #
31) L7 AR-1260-1	7.172f	0.000	482871	0	3.727	N.D. #
32) L7 AR-1260-2	7.500	0.000	440354	0	2.983	N.D. #
33) L7 AR-1260-3	7.863	0.000	245616	0	2.184	N.D. #
35) L7 AR-1260-5	8.360f	0.000	979982	0	4.386	N.D. #
36) L8 AR-1262-1	7.776	0.000	1390223	0	13.986	N.D. #
37) L8 AR-1262-2	8.360f	0.000	979982	0	4.129	N.D. #
38) L8 AR-1262-3	8.735	0.000	334605	0	1.981	N.D. #
39) L8 AR-1262-4	8.786	0.000	1584859	0	17.696	N.D. #
40) L8 AR-1262-5	9.496	0.000	474966	0	4.973	N.D. #
41) L9 AR-1268-1	8.735	0.000	334605	0	1.048	N.D. #
42) L9 AR-1268-2	8.786	0.000	1584859	0	5.459	N.D. #
43) L9 AR-1268-3	9.052	0.000	284281	0	1.114	N.D. #
44) L9 AR-1268-4	9.496	0.000	474966	0	4.447	N.D. #
45) L9 AR-1268-5	9.932	0.000	24625	0	0.031	N.D. #

Data Path : Z:\pestpcbsrv\HPCHEM1\ECD_0\Data\P0031623\
Data File : P0093215.D
Signal(s) : Signal #1: ECD1A.ch Signal #2: ECD2B.ch
Acq On : 16 Mar 2023 15:21
Operator : YP/AJ
Sample : 01928-01
Misc :
ALS Vial : 13 Sample Multiplier: 1

Instrument :
ECD_0
ClientSampleId :

Integration File signal 1: autoint1.e
Integration File signal 2: autoint2.e
Quant Time: Mar 16 21:55:44 2023
Quant Method : Z:\pestpcbsrv\HPCHEM1\ECD_0\methods\P0031323.M
Quant Title : GC EXTRACTABLES
QLast Update : Tue Mar 14 05:32:59 2023
Response via : Initial Calibration
Integrator: ChemStation

Volume Inj. : 2 µl
Signal #1 Phase : ZB-MR1 Signal #2 Phase: ZB-MR2
Signal #1 Info : 30Mx0.32mmx 0.50µ Signal #2 Info : 30M x 0.32mm x 0.25µm

Compound	RT#1	RT#2	Resp#1	Resp#2	ng/ml	ng/ml
----------	------	------	--------	--------	-------	-------

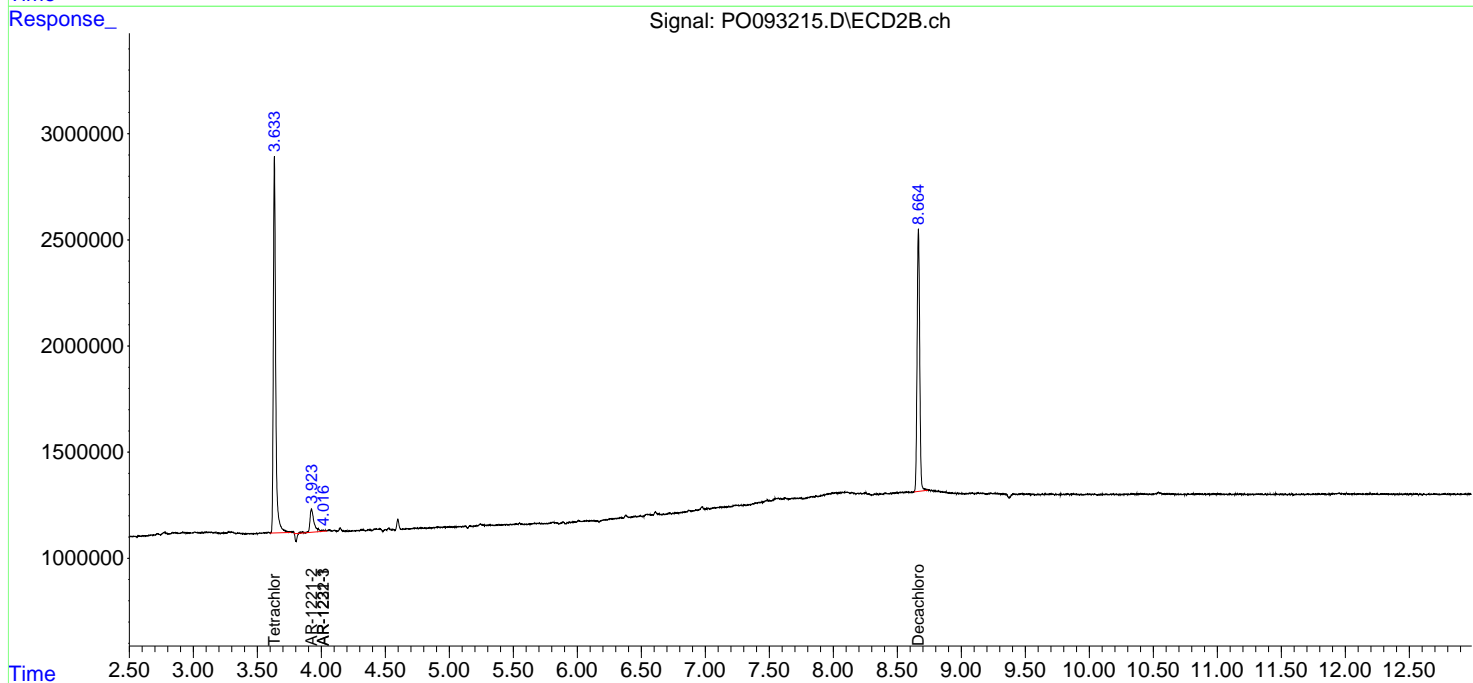
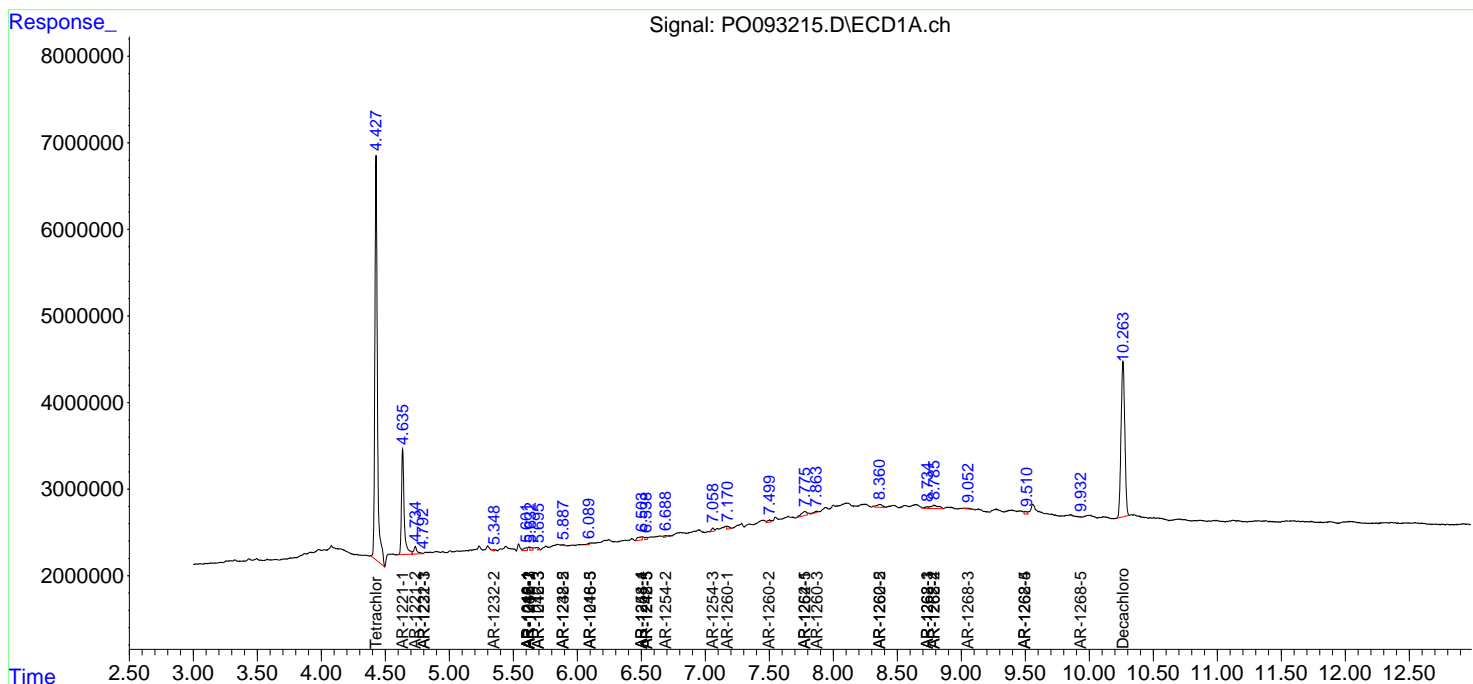
(f)=RT Delta > 1/2 Window (#)=Amounts differ by > 25% (m)=manual int.

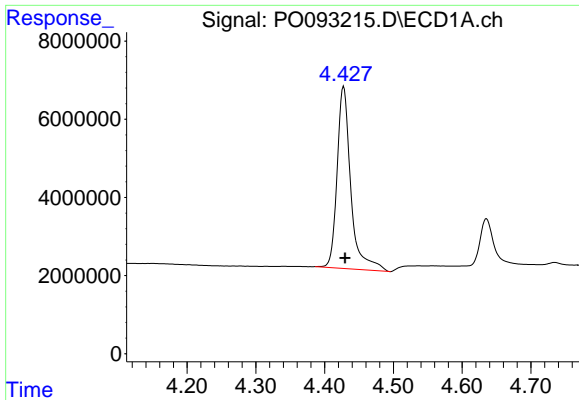
Data Path : Z:\pestpcbsrv\HPCHEM1\ECD_O\Data\P0031623\
 Data File : P0093215.D
 Signal(s) : Signal #1: ECD1A.ch Signal #2: ECD2B.ch
 Acq On : 16 Mar 2023 15:21
 Operator : YP/AJ
 Sample : 01928-01
 Misc :
 ALS Vial : 13 Sample Multiplier: 1

Instrument :
 ECD_O
 ClientSampleId :

Integration File signal 1: autoint1.e
 Integration File signal 2: autoint2.e
 Quant Time: Mar 16 21:55:44 2023
 Quant Method : Z:\pestpcbsrv\HPCHEM1\ECD_O\methods\P0031323.M
 Quant Title : GC EXTRACTABLES
 QLast Update : Tue Mar 14 05:32:59 2023
 Response via : Initial Calibration
 Integrator: ChemStation

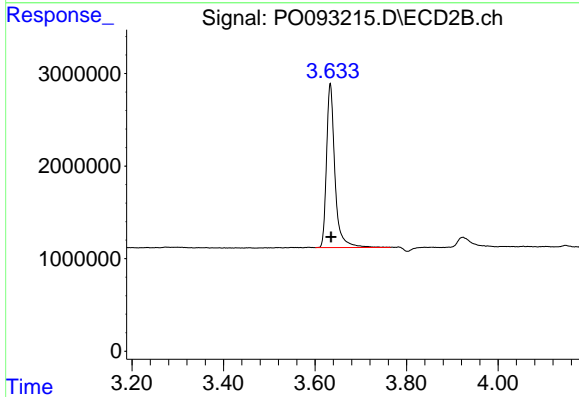
Volume Inj. : 2 µl
 Signal #1 Phase : ZB-MR1 Signal #2 Phase: ZB-MR2
 Signal #1 Info : 30Mx0.32mmx 0.50µ Signal #2 Info : 30M x 0.32mm x 0.25µm



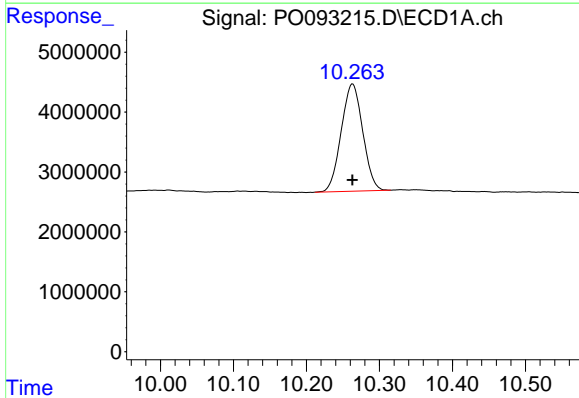


#1 Tetrachloro-m-xylene
 R.T.: 4.428 min
 Delta R.T.: -0.002 min
 Response: 64559901
 Conc: 20.62 ng/ml

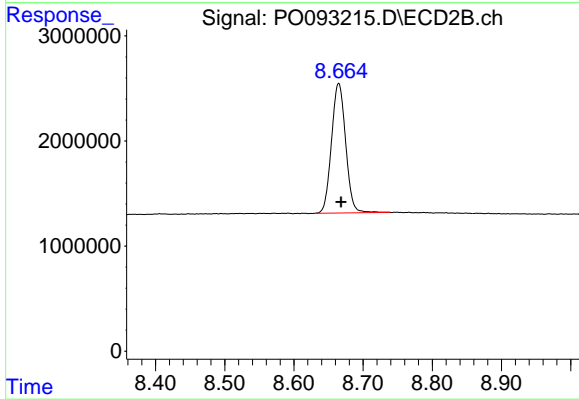
Instrument :
 ECD_O
 ClientSampleId :



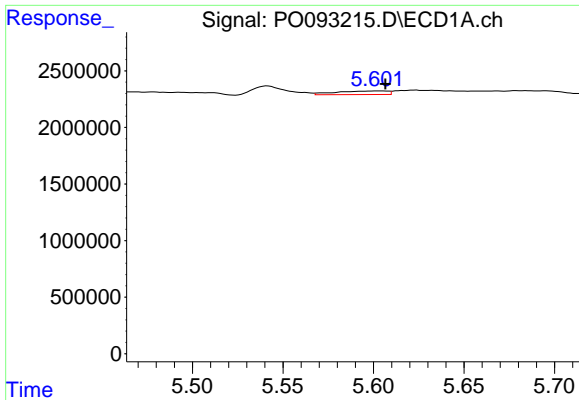
#1 Tetrachloro-m-xylene
 R.T.: 3.633 min
 Delta R.T.: -0.002 min
 Response: 22512416
 Conc: 19.96 ng/ml



#2 Decachlorobiphenyl
 R.T.: 10.263 min
 Delta R.T.: 0.000 min
 Response: 36648802
 Conc: 16.93 ng/ml



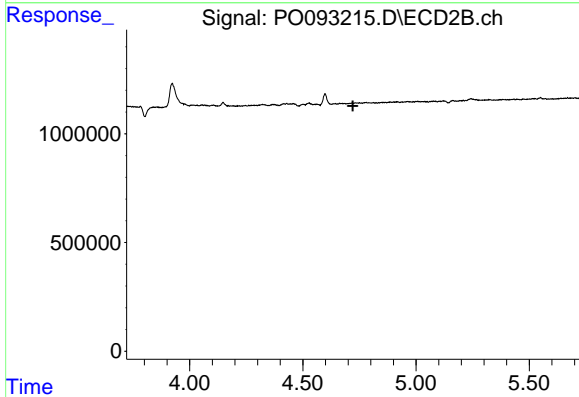
#2 Decachlorobiphenyl
 R.T.: 8.665 min
 Delta R.T.: -0.003 min
 Response: 17550260
 Conc: 17.92 ng/ml



#3 AR-1016-1

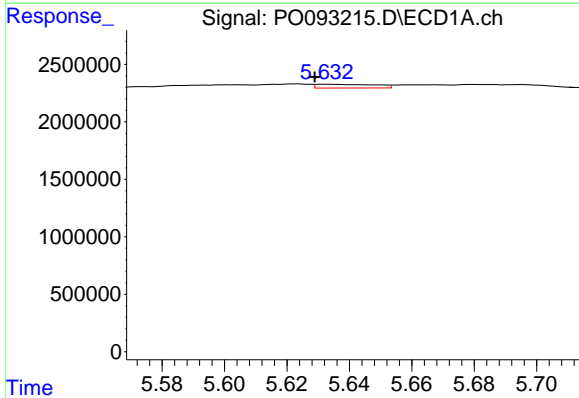
R.T.: 5.604 min
 Delta R.T.: -0.003 min
 Response: 622842
 Conc: 6.52 ng/ml

Instrument :
 ECD_O
 ClientSampleId :



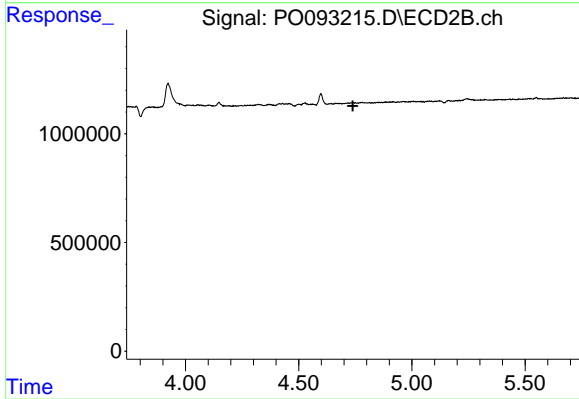
#3 AR-1016-1

R.T.: 0.000 min
 Exp R.T. : 4.721 min
 Response: 0
 Conc: N.D.



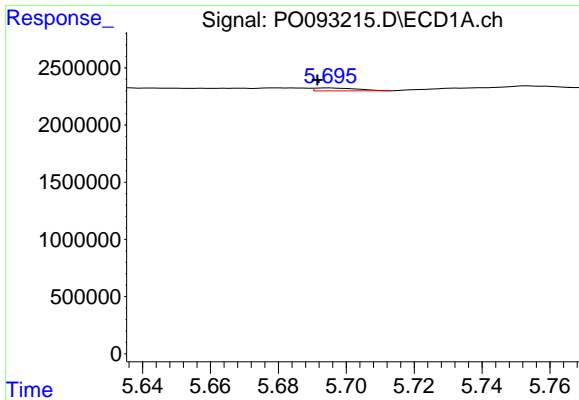
#4 AR-1016-2

R.T.: 5.633 min
 Delta R.T.: 0.004 min
 Response: 435993
 Conc: 3.05 ng/ml



#4 AR-1016-2

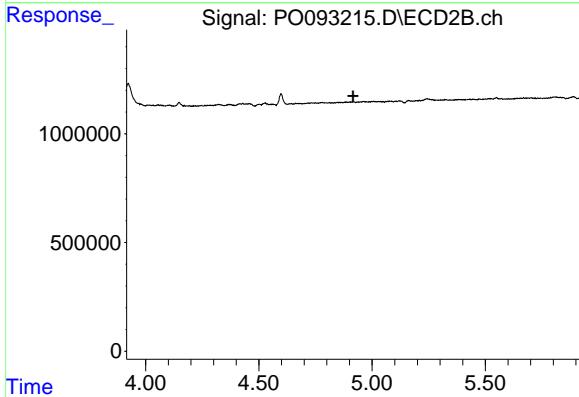
R.T.: 0.000 min
 Exp R.T. : 4.739 min
 Response: 0
 Conc: N.D.



#5 AR-1016-3

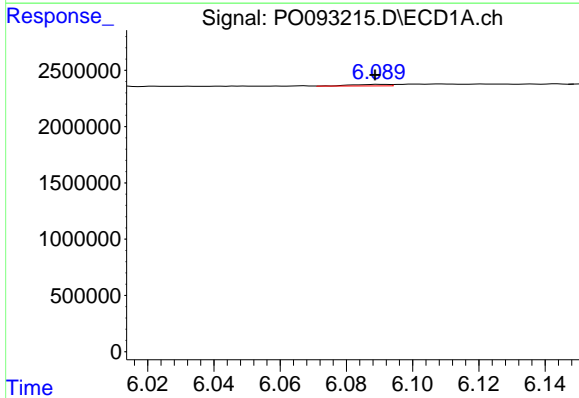
R.T.: 5.695 min
 Delta R.T.: 0.003 min
 Response: 218868
 Conc: 2.41 ng/ml

Instrument :
 ECD_O
 ClientSampleId :



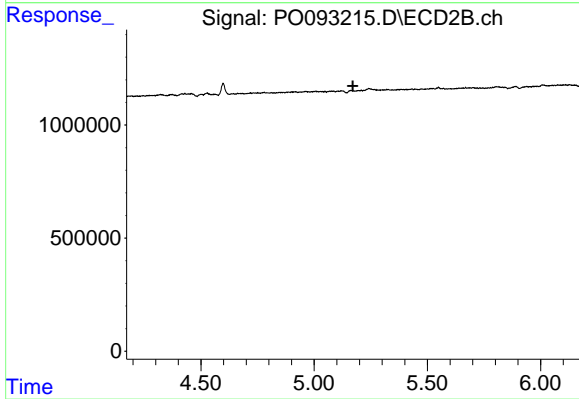
#5 AR-1016-3

R.T.: 0.000 min
 Exp R.T. : 4.916 min
 Response: 0
 Conc: N.D.



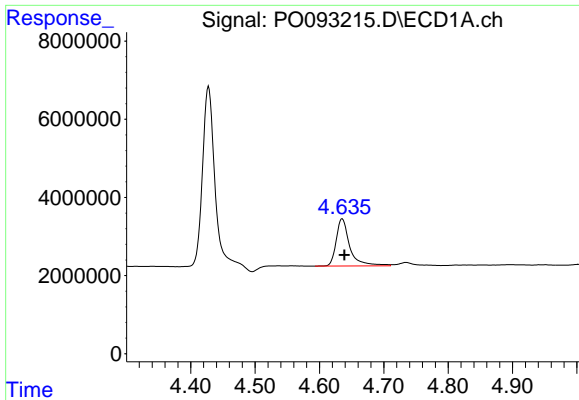
#7 AR-1016-5

R.T.: 6.090 min
 Delta R.T.: 0.002 min
 Response: 112519
 Conc: 1.50 ng/ml



#7 AR-1016-5

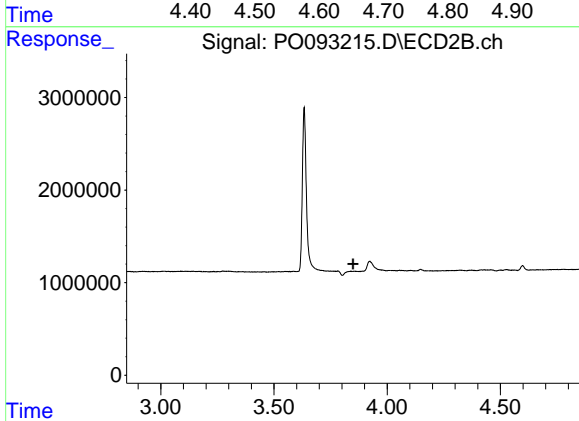
R.T.: 0.000 min
 Exp R.T. : 5.171 min
 Response: 0
 Conc: N.D.



#8 AR-1221-1

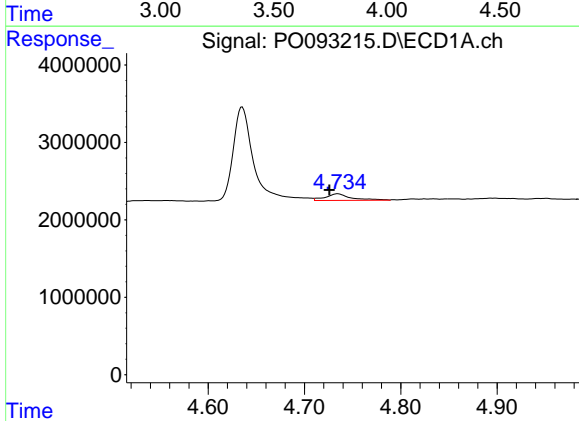
R.T.: 4.635 min
 Delta R.T.: -0.004 min
 Response: 17837114
 Conc: 441.27 ng/ml

Instrument :
 ECD_O
 ClientSampleId :



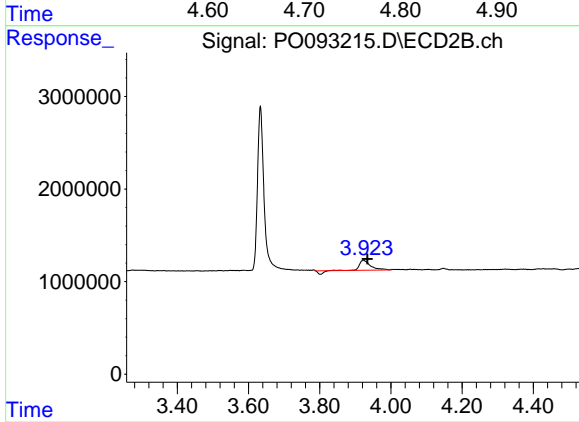
#8 AR-1221-1

R.T.: 0.000 min
 Exp R.T. : 3.849 min
 Response: 0
 Conc: N.D.



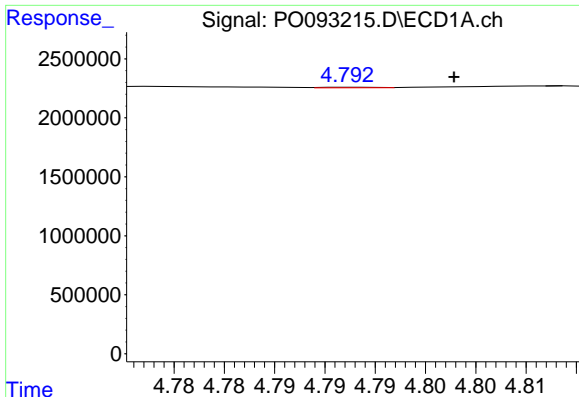
#9 AR-1221-2

R.T.: 4.735 min
 Delta R.T.: 0.009 min
 Response: 1602317
 Conc: 52.87 ng/ml



#9 AR-1221-2

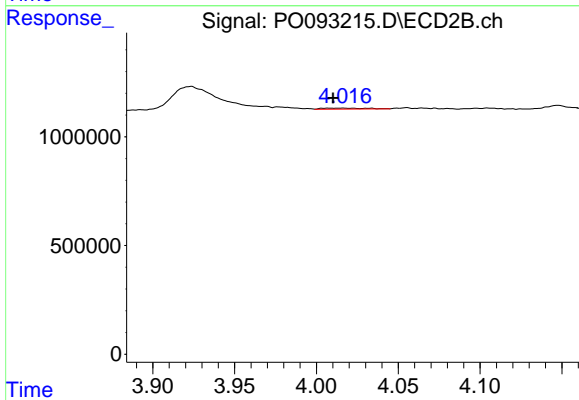
R.T.: 3.923 min
 Delta R.T.: -0.011 min
 Response: 2085183
 Conc: 190.94 ng/ml



#10 AR-1221-3

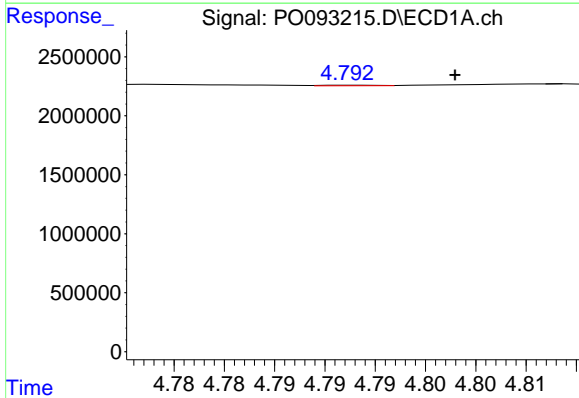
R.T.: 4.793 min
 Delta R.T.: -0.010 min
 Response: 18941
 Conc: 0.21 ng/ml

Instrument :
 ECD_O
 ClientSampleId :



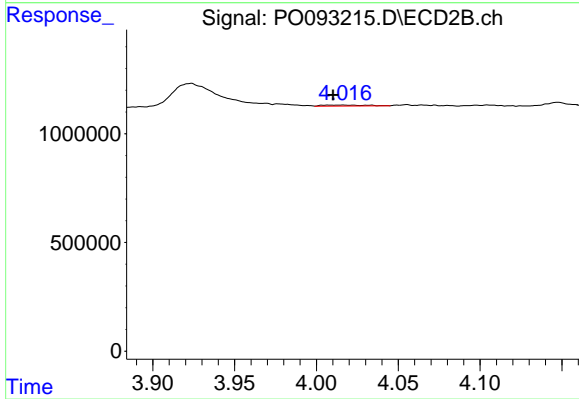
#10 AR-1221-3

R.T.: 4.016 min
 Delta R.T.: 0.006 min
 Response: 79880
 Conc: 2.34 ng/ml



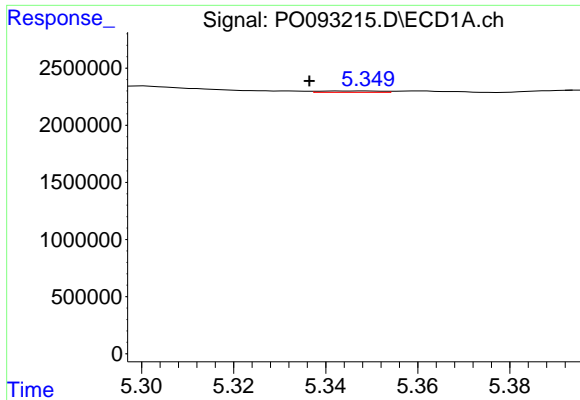
#11 AR-1232-1

R.T.: 4.793 min
 Delta R.T.: -0.010 min
 Response: 18941
 Conc: 0.26 ng/ml



#11 AR-1232-1

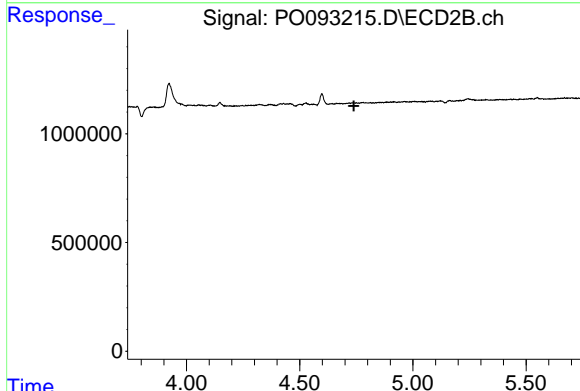
R.T.: 4.016 min
 Delta R.T.: 0.006 min
 Response: 79880
 Conc: 2.83 ng/ml



#12 AR-1232-2

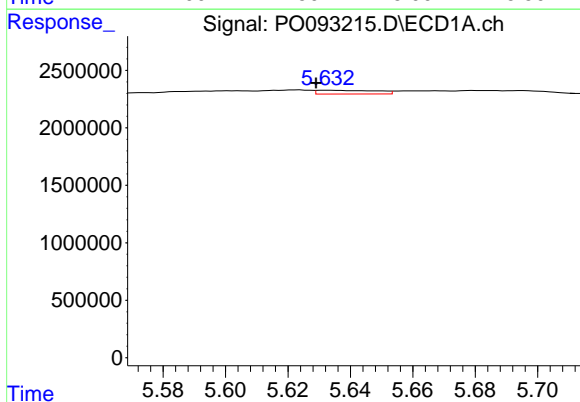
R.T.: 5.349 min
 Delta R.T.: 0.012 min
 Response: 108180
 Conc: 3.01 ng/ml

Instrument :
 ECD_O
 ClientSampleId :



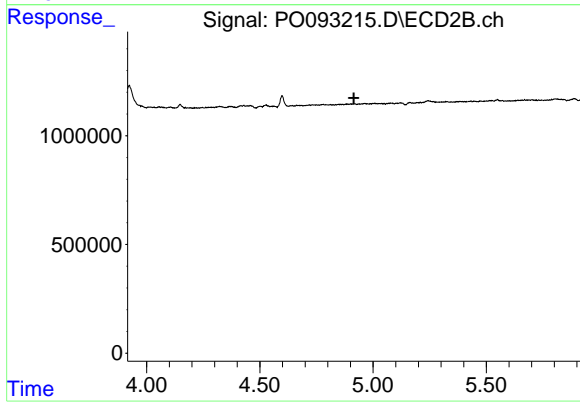
#12 AR-1232-2

R.T.: 0.000 min
 Exp R.T. : 4.739 min
 Response: 0
 Conc: N.D.



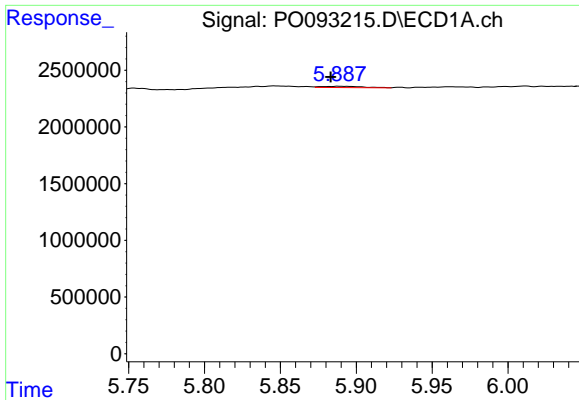
#13 AR-1232-3

R.T.: 5.633 min
 Delta R.T.: 0.004 min
 Response: 435993
 Conc: 6.66 ng/ml



#13 AR-1232-3

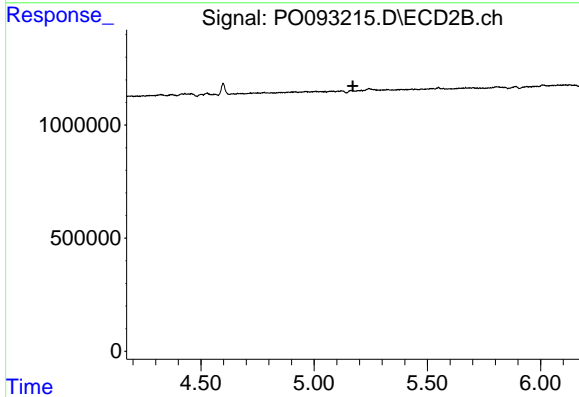
R.T.: 0.000 min
 Exp R.T. : 4.915 min
 Response: 0
 Conc: N.D.



#15 AR-1232-5

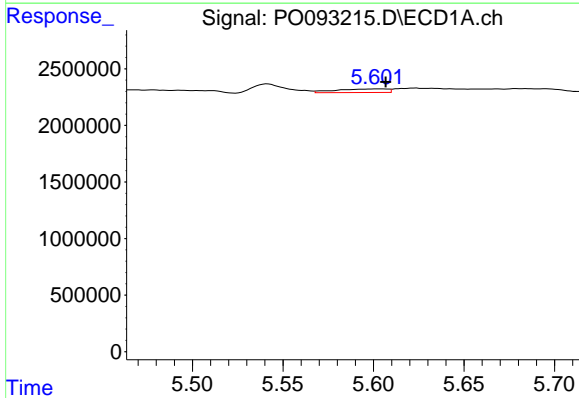
R.T.: 5.889 min
 Delta R.T.: 0.006 min
 Response: 202226
 Conc: 7.29 ng/ml

Instrument :
 ECD_O
 ClientSampleId :



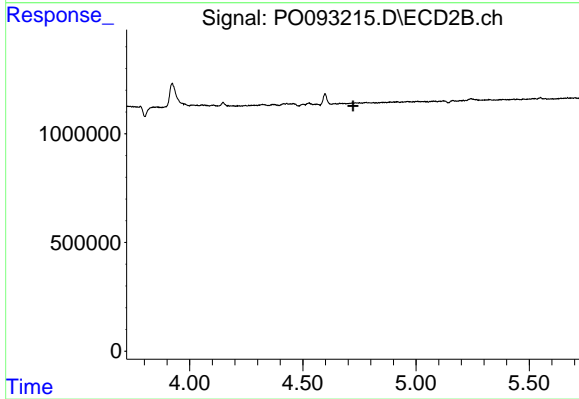
#15 AR-1232-5

R.T.: 0.000 min
 Exp R.T. : 5.171 min
 Response: 0
 Conc: N.D.



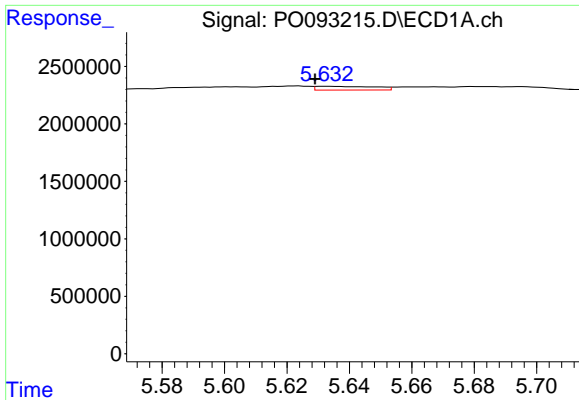
#16 AR-1242-1

R.T.: 5.604 min
 Delta R.T.: -0.003 min
 Response: 622842
 Conc: 7.60 ng/ml



#16 AR-1242-1

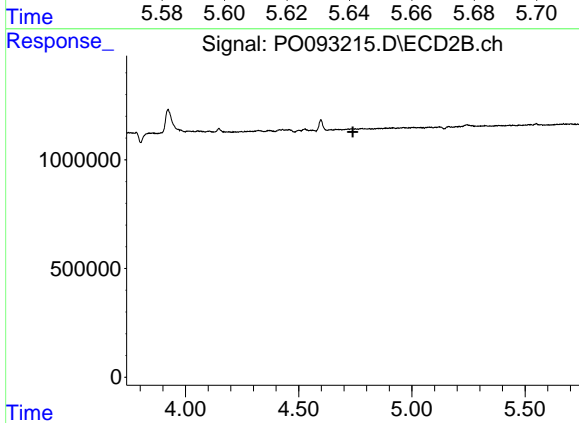
R.T.: 0.000 min
 Exp R.T. : 4.721 min
 Response: 0
 Conc: N.D.



#17 AR-1242-2

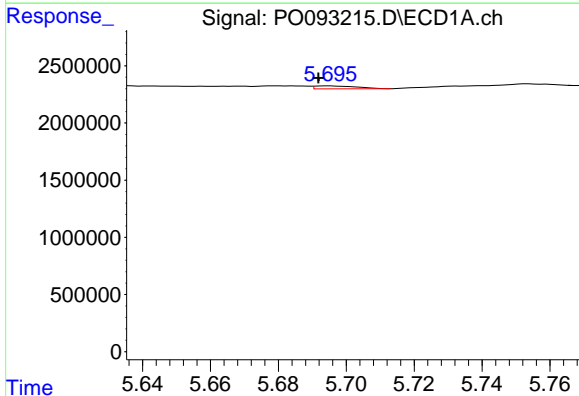
R.T.: 5.633 min
 Delta R.T.: 0.004 min
 Response: 435993
 Conc: 3.63 ng/ml

Instrument :
 ECD_O
 ClientSampleId :



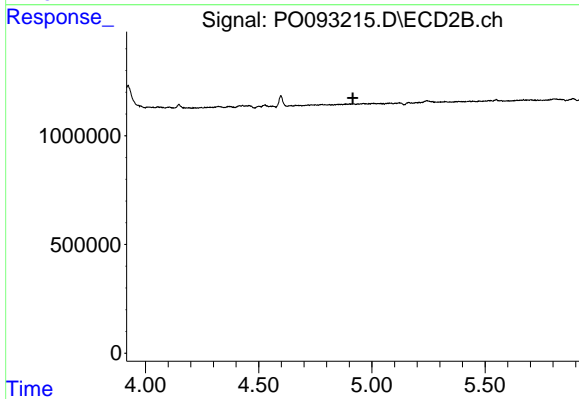
#17 AR-1242-2

R.T.: 0.000 min
 Exp R.T. : 4.739 min
 Response: 0
 Conc: N.D.



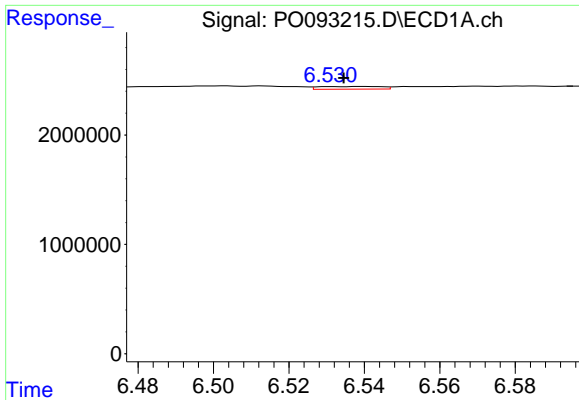
#18 AR-1242-3

R.T.: 5.695 min
 Delta R.T.: 0.003 min
 Response: 218868
 Conc: 2.85 ng/ml



#18 AR-1242-3

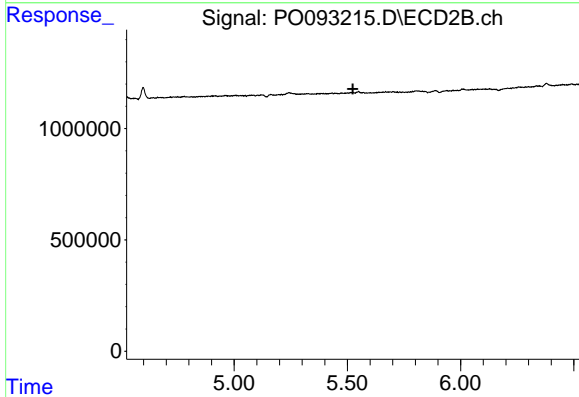
R.T.: 0.000 min
 Exp R.T. : 4.916 min
 Response: 0
 Conc: N.D.



#20 AR-1242-5

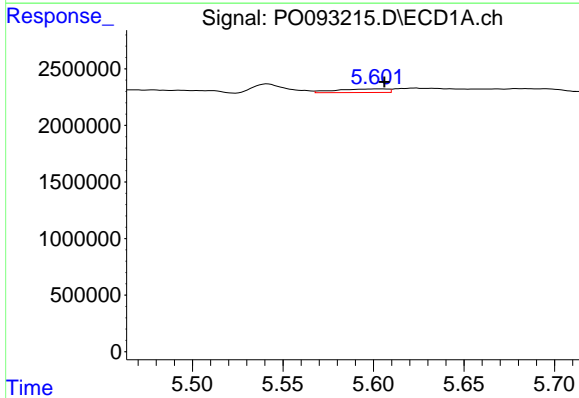
R.T.: 6.540 min
 Delta R.T.: 0.005 min
 Response: 286066
 Conc: 4.58 ng/ml

Instrument :
 ECD_O
 ClientSampleId :



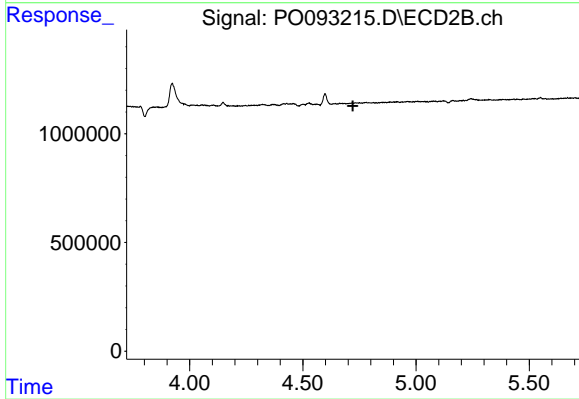
#20 AR-1242-5

R.T.: 0.000 min
 Exp R.T. : 5.524 min
 Response: 0
 Conc: N.D.



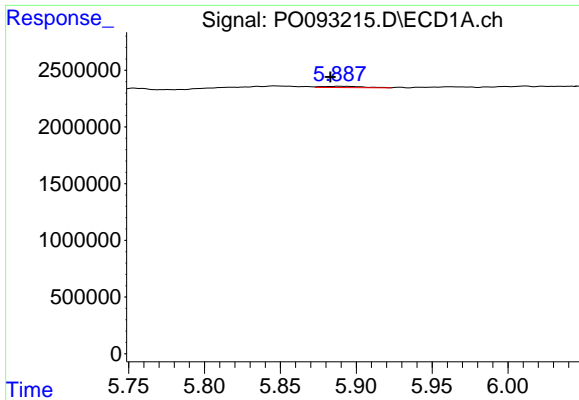
#21 AR-1248-1

R.T.: 5.604 min
 Delta R.T.: -0.003 min
 Response: 622842
 Conc: 10.02 ng/ml



#21 AR-1248-1

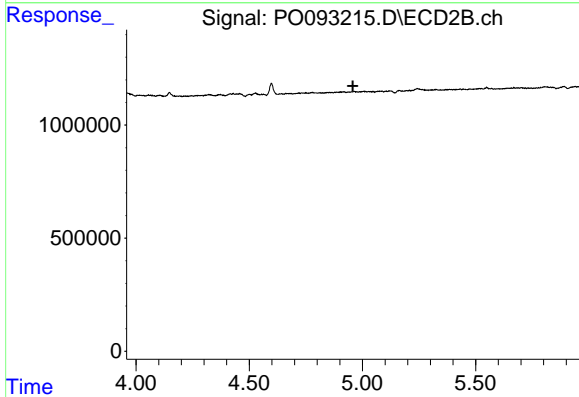
R.T.: 0.000 min
 Exp R.T. : 4.721 min
 Response: 0
 Conc: N.D.



#22 AR-1248-2

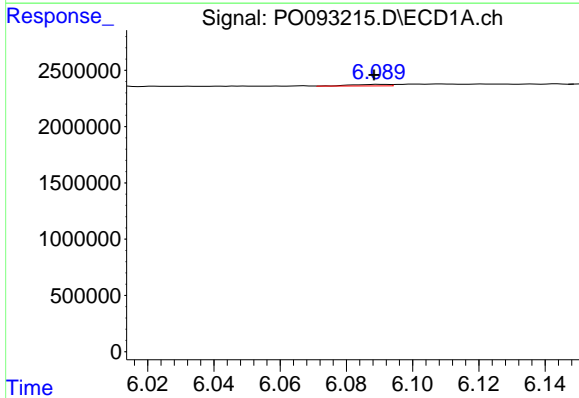
R.T.: 5.889 min
 Delta R.T.: 0.006 min
 Response: 202226
 Conc: 2.12 ng/ml

Instrument :
 ECD_O
 ClientSampleId :



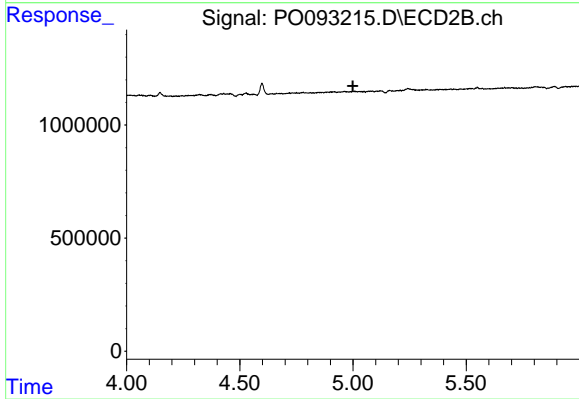
#22 AR-1248-2

R.T.: 0.000 min
 Exp R.T. : 4.958 min
 Response: 0
 Conc: N.D.



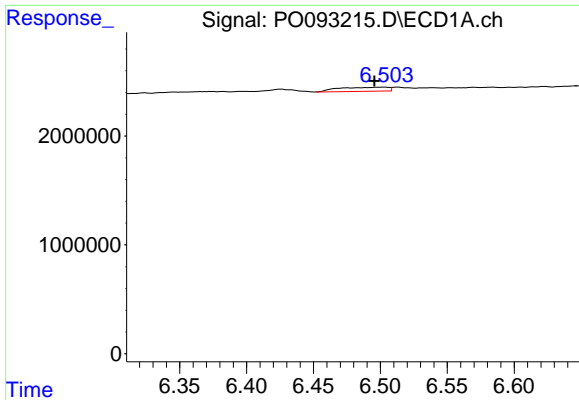
#23 AR-1248-3

R.T.: 6.090 min
 Delta R.T.: 0.002 min
 Response: 112519
 Conc: 1.08 ng/ml



#23 AR-1248-3

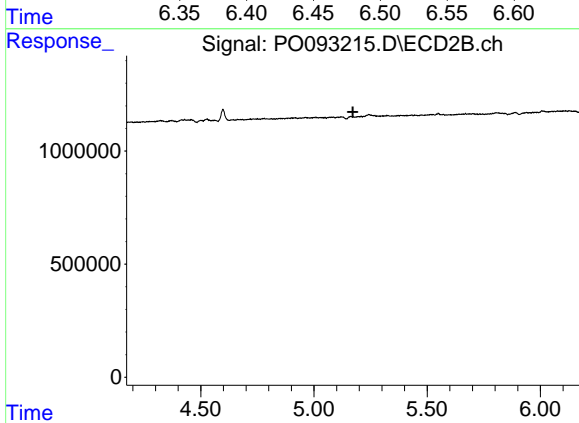
R.T.: 0.000 min
 Exp R.T. : 5.000 min
 Response: 0
 Conc: N.D.



#24 AR-1248-4

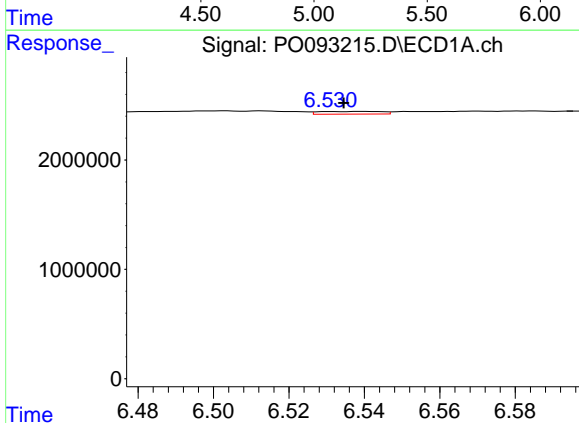
R.T.: 6.503 min
 Delta R.T.: 0.007 min
 Response: 965339
 Conc: 9.48 ng/ml

Instrument :
 ECD_O
 ClientSampleId :



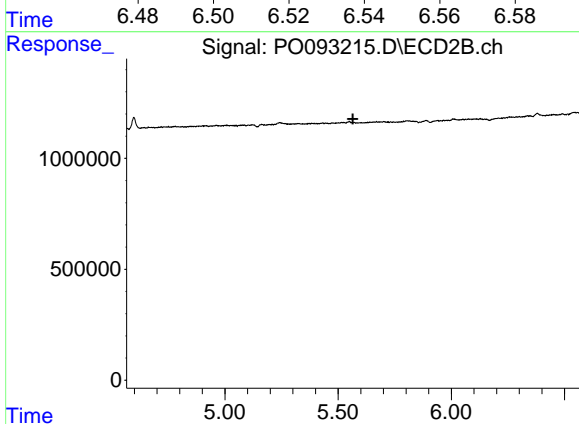
#24 AR-1248-4

R.T.: 0.000 min
 Exp R.T. : 5.172 min
 Response: 0
 Conc: N.D.



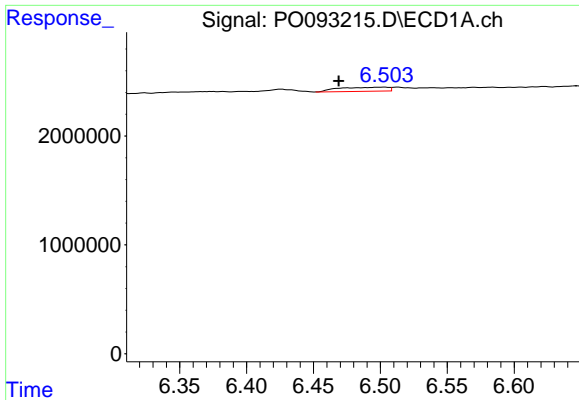
#25 AR-1248-5

R.T.: 6.540 min
 Delta R.T.: 0.005 min
 Response: 286066
 Conc: 2.79 ng/ml



#25 AR-1248-5

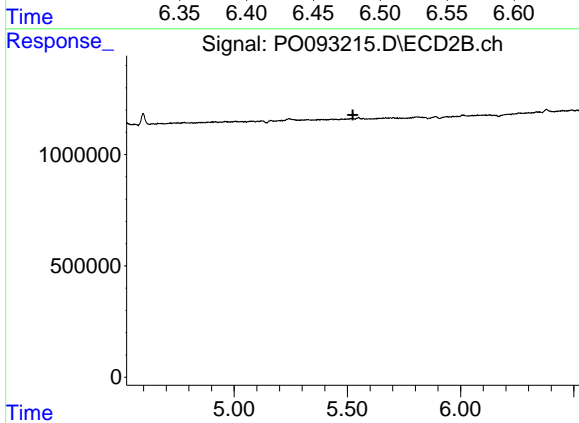
R.T.: 0.000 min
 Exp R.T. : 5.565 min
 Response: 0
 Conc: N.D.



#26 AR-1254-1

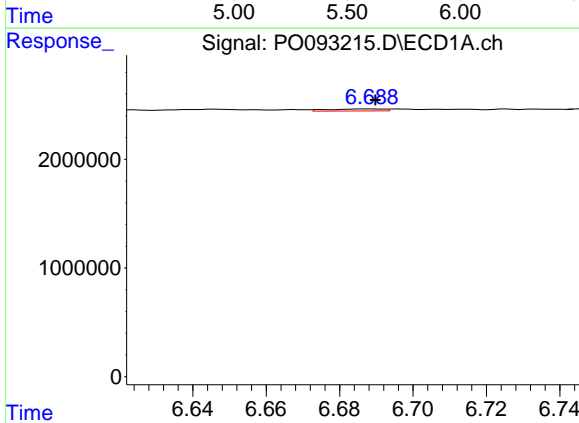
R.T.: 6.503 min
 Delta R.T.: 0.034 min
 Response: 965339
 Conc: 8.26 ng/ml

Instrument :
 ECD_O
 ClientSampleId :



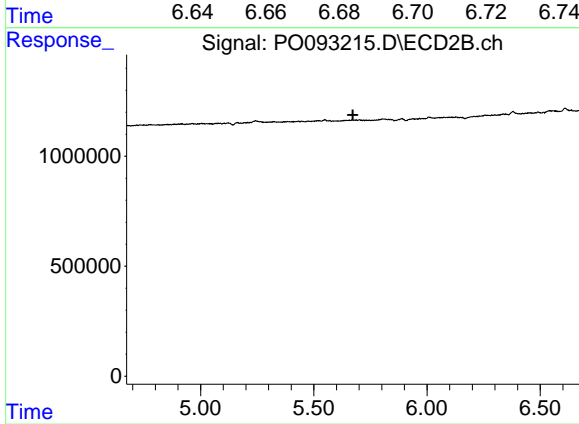
#26 AR-1254-1

R.T.: 0.000 min
 Exp R.T. : 5.524 min
 Response: 0
 Conc: N.D.



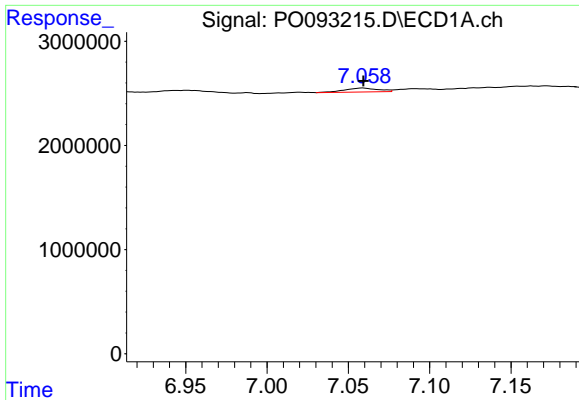
#27 AR-1254-2

R.T.: 6.688 min
 Delta R.T.: -0.002 min
 Response: 201509
 Conc: 1.18 ng/ml



#27 AR-1254-2

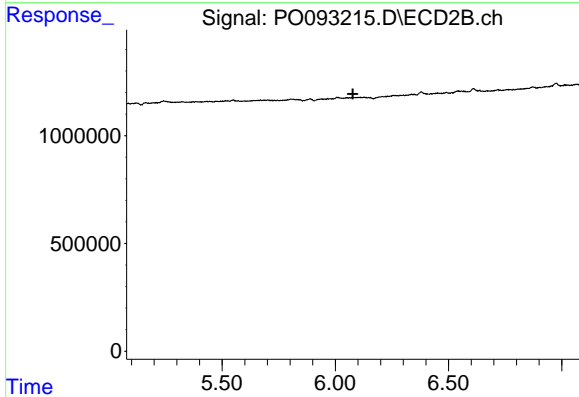
R.T.: 0.000 min
 Exp R.T. : 5.673 min
 Response: 0
 Conc: N.D.



#28 AR-1254-3

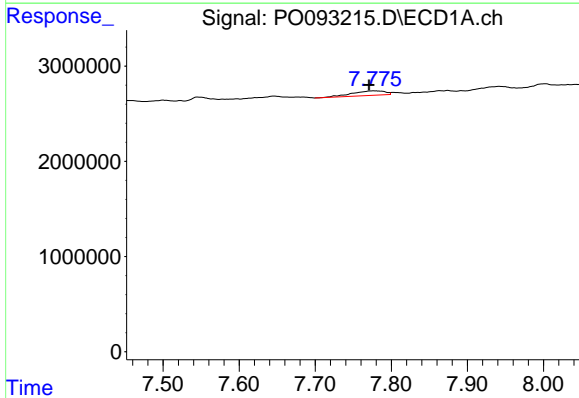
R.T.: 7.059 min
 Delta R.T.: 0.000 min
 Response: 570410
 Conc: 3.43 ng/ml

Instrument :
 ECD_O
 ClientSampleId :



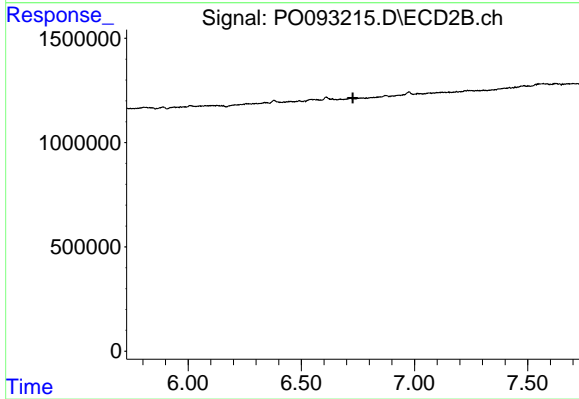
#28 AR-1254-3

R.T.: 0.000 min
 Exp R.T. : 6.078 min
 Response: 0
 Conc: N.D.



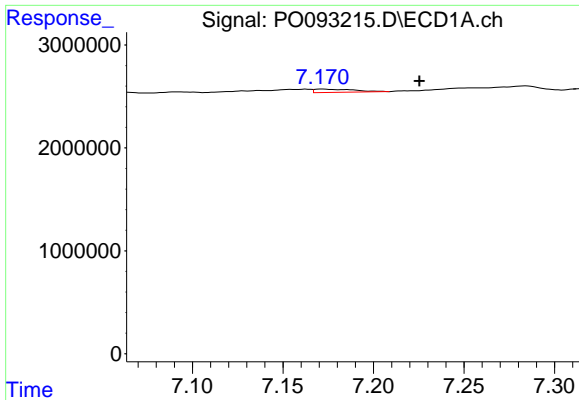
#30 AR-1254-5

R.T.: 7.776 min
 Delta R.T.: 0.006 min
 Response: 1390223
 Conc: 10.27 ng/ml



#30 AR-1254-5

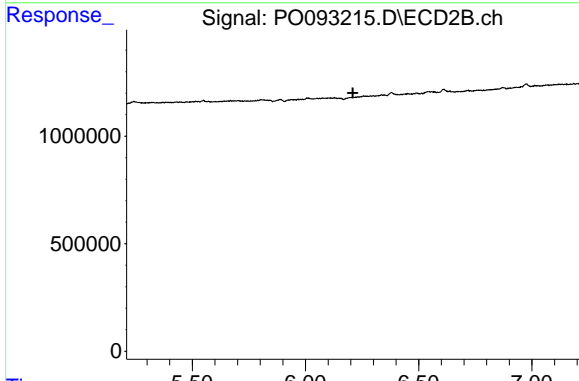
R.T.: 0.000 min
 Exp R.T. : 6.728 min
 Response: 0
 Conc: N.D.



#31 AR-1260-1

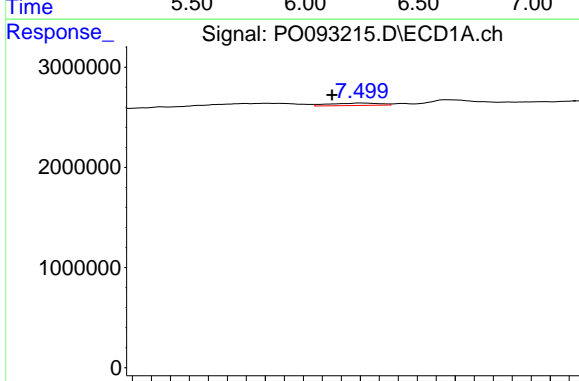
R.T.: 7.172 min
 Delta R.T.: -0.054 min
 Response: 482871
 Conc: 3.73 ng/ml

Instrument :
 ECD_O
 ClientSampleId :



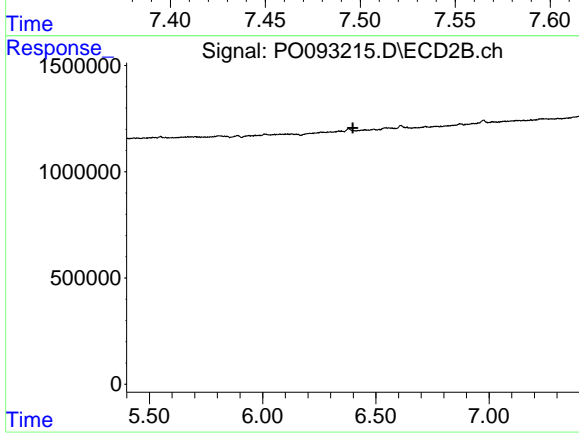
#31 AR-1260-1

R.T.: 0.000 min
 Exp R.T. : 6.210 min
 Response: 0
 Conc: N.D.



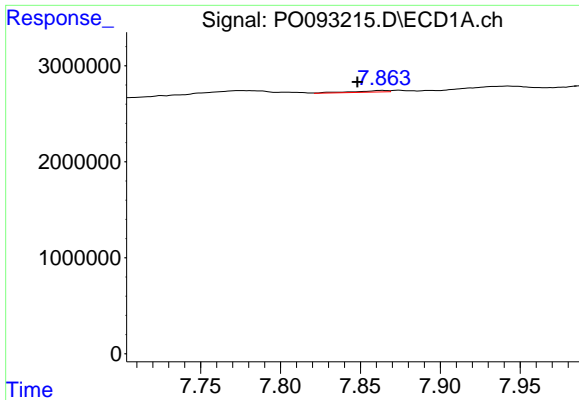
#32 AR-1260-2

R.T.: 7.500 min
 Delta R.T.: 0.015 min
 Response: 440354
 Conc: 2.98 ng/ml



#32 AR-1260-2

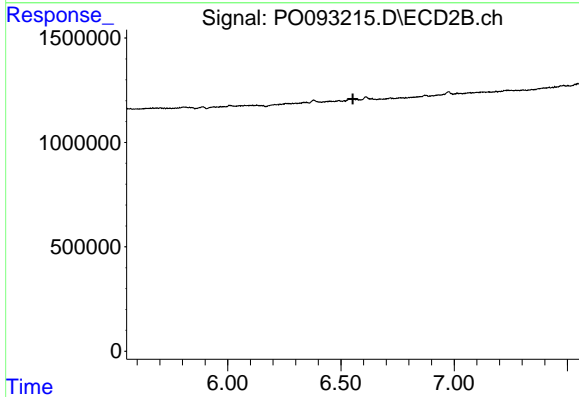
R.T.: 0.000 min
 Exp R.T. : 6.398 min
 Response: 0
 Conc: N.D.



#33 AR-1260-3

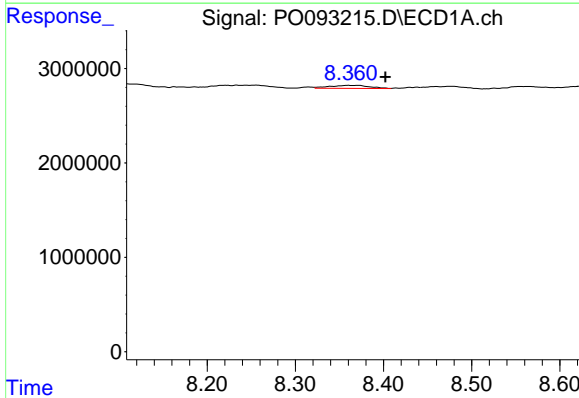
R.T.: 7.863 min
 Delta R.T.: 0.015 min
 Response: 245616
 Conc: 2.18 ng/ml

Instrument :
 ECD_O
 ClientSampleId :



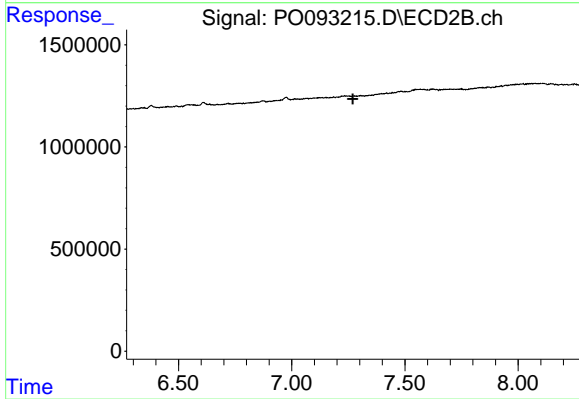
#33 AR-1260-3

R.T.: 0.000 min
 Exp R.T. : 6.552 min
 Response: 0
 Conc: N.D.



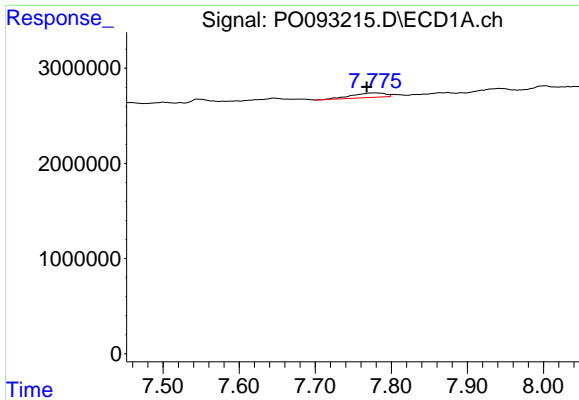
#35 AR-1260-5

R.T.: 8.360 min
 Delta R.T.: -0.043 min
 Response: 979982
 Conc: 4.39 ng/ml



#35 AR-1260-5

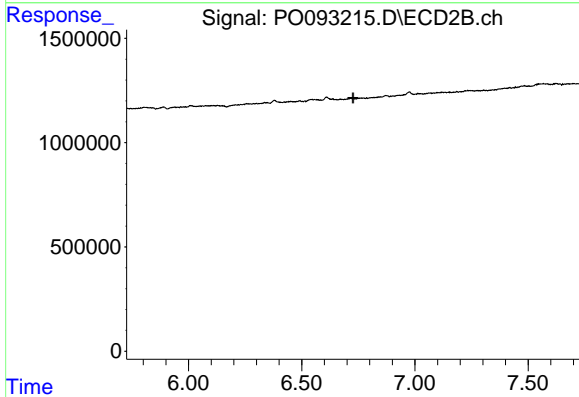
R.T.: 0.000 min
 Exp R.T. : 7.270 min
 Response: 0
 Conc: N.D.



#36 AR-1262-1

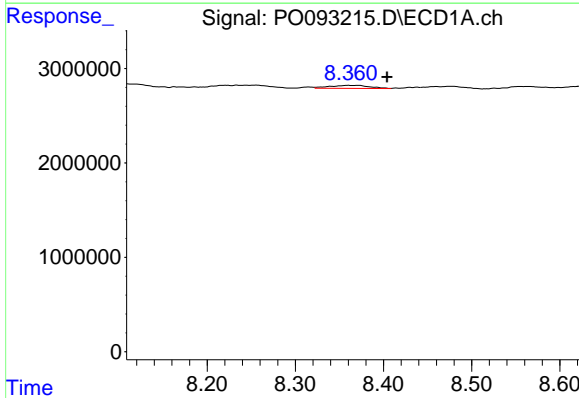
R.T.: 7.776 min
 Delta R.T.: 0.009 min
 Response: 1390223
 Conc: 13.99 ng/ml

Instrument :
 ECD_O
 ClientSampleId :



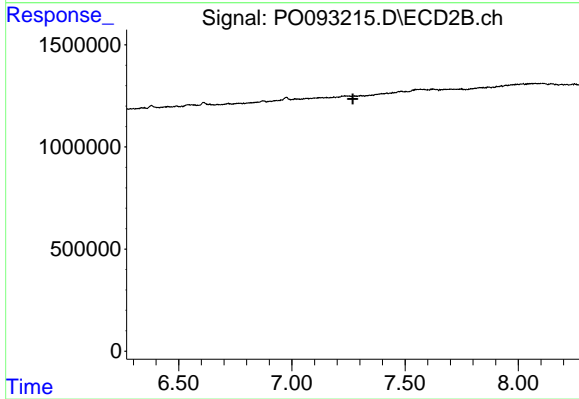
#36 AR-1262-1

R.T.: 0.000 min
 Exp R.T. : 6.726 min
 Response: 0
 Conc: N.D.



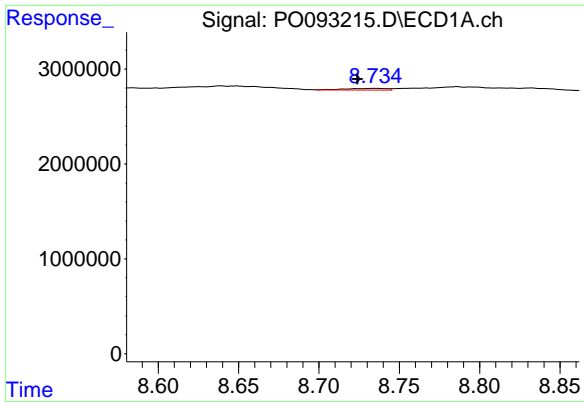
#37 AR-1262-2

R.T.: 8.360 min
 Delta R.T.: -0.044 min
 Response: 979982
 Conc: 4.13 ng/ml



#37 AR-1262-2

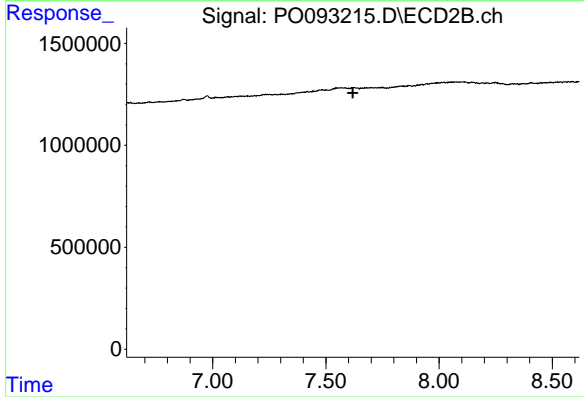
R.T.: 0.000 min
 Exp R.T. : 7.270 min
 Response: 0
 Conc: N.D.



#38 AR-1262-3

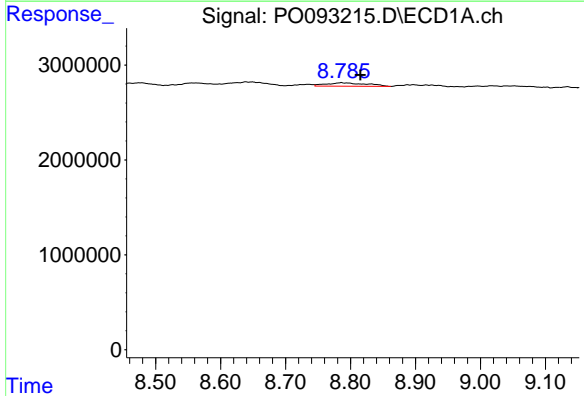
R.T.: 8.735 min
 Delta R.T.: 0.011 min
 Response: 334605
 Conc: 1.98 ng/ml

Instrument :
 ECD_O
 ClientSampleId :



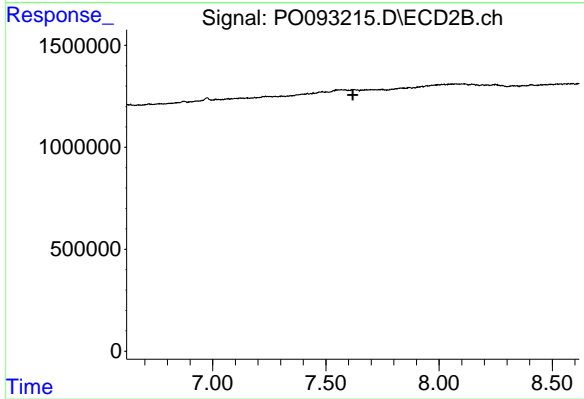
#38 AR-1262-3

R.T.: 0.000 min
 Exp R.T. : 7.620 min
 Response: 0
 Conc: N.D.



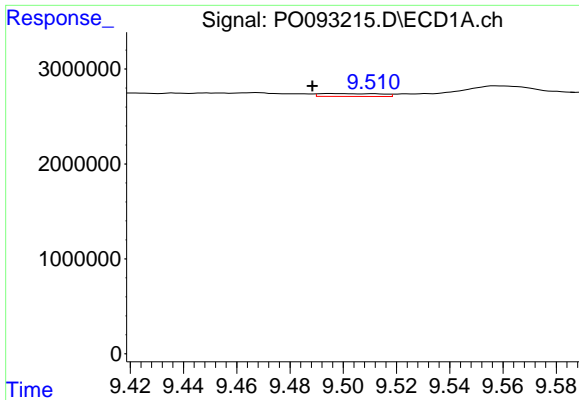
#39 AR-1262-4

R.T.: 8.786 min
 Delta R.T.: -0.029 min
 Response: 1584859
 Conc: 17.70 ng/ml



#39 AR-1262-4

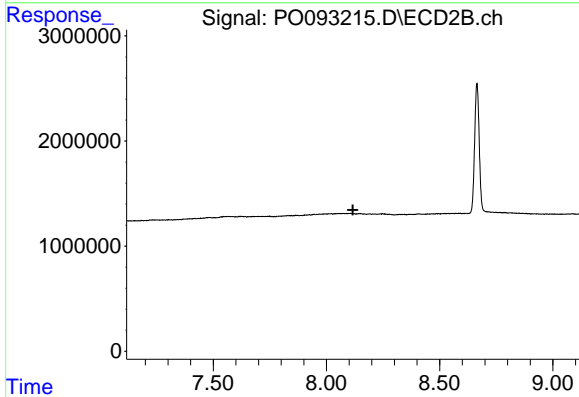
R.T.: 0.000 min
 Exp R.T. : 7.620 min
 Response: 0
 Conc: N.D.



#40 AR-1262-5

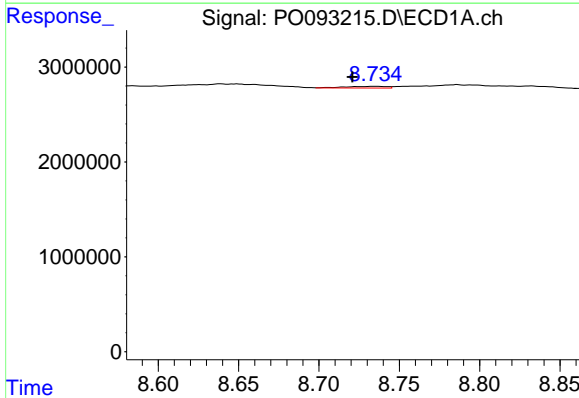
R.T.: 9.496 min
 Delta R.T.: 0.008 min
 Response: 474966
 Conc: 4.97 ng/ml

Instrument :
 ECD_O
 ClientSampleId :



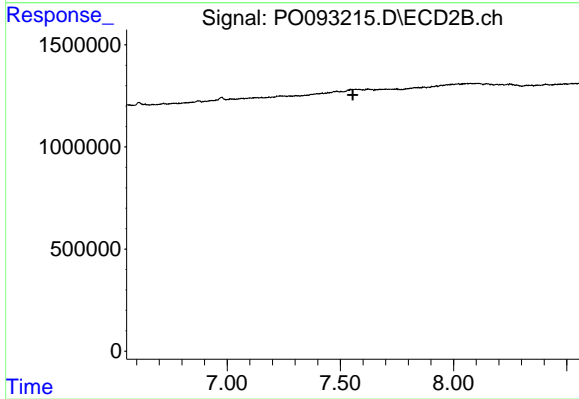
#40 AR-1262-5

R.T.: 0.000 min
 Exp R.T. : 8.117 min
 Response: 0
 Conc: N.D.



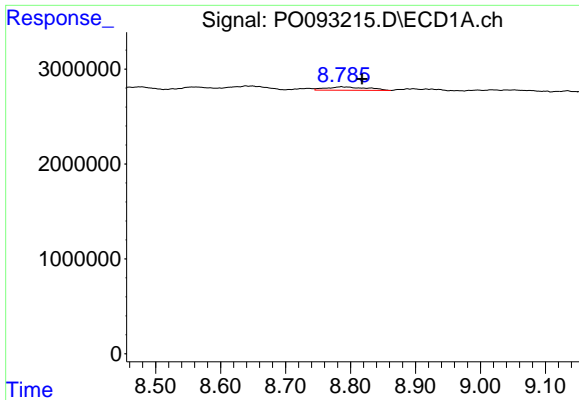
#41 AR-1268-1

R.T.: 8.735 min
 Delta R.T.: 0.014 min
 Response: 334605
 Conc: 1.05 ng/ml



#41 AR-1268-1

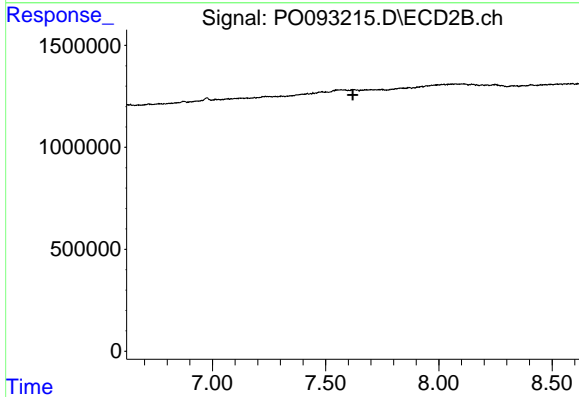
R.T.: 0.000 min
 Exp R.T. : 7.555 min
 Response: 0
 Conc: N.D.



#42 AR-1268-2

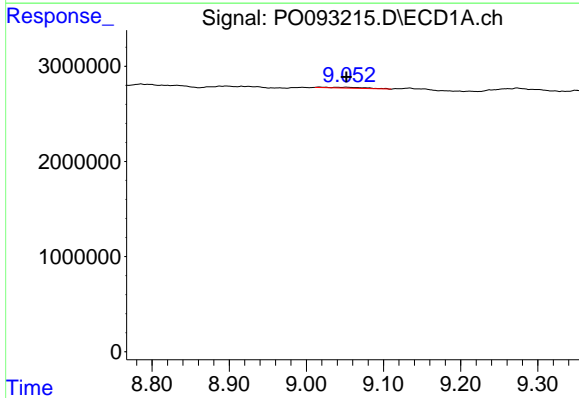
R.T.: 8.786 min
 Delta R.T.: -0.032 min
 Response: 1584859
 Conc: 5.46 ng/ml

Instrument :
 ECD_O
 ClientSampleId :



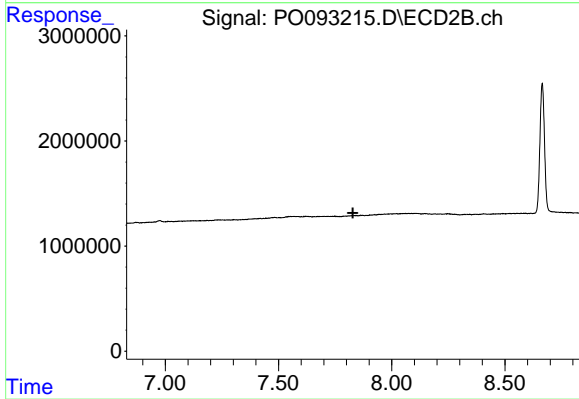
#42 AR-1268-2

R.T.: 0.000 min
 Exp R.T. : 7.620 min
 Response: 0
 Conc: N.D.



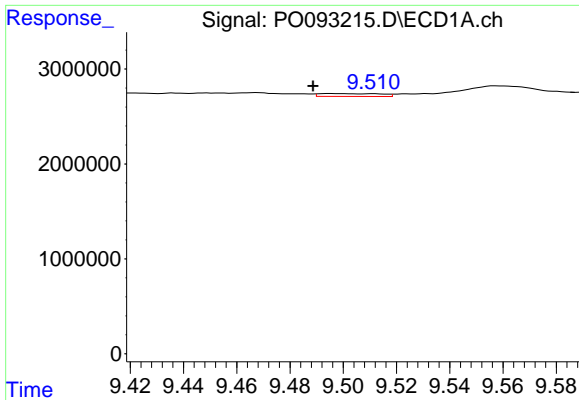
#43 AR-1268-3

R.T.: 9.052 min
 Delta R.T.: 0.000 min
 Response: 284281
 Conc: 1.11 ng/ml



#43 AR-1268-3

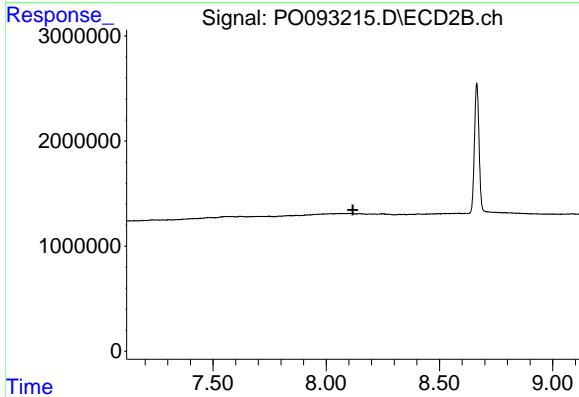
R.T.: 0.000 min
 Exp R.T. : 7.828 min
 Response: 0
 Conc: N.D.



#44 AR-1268-4

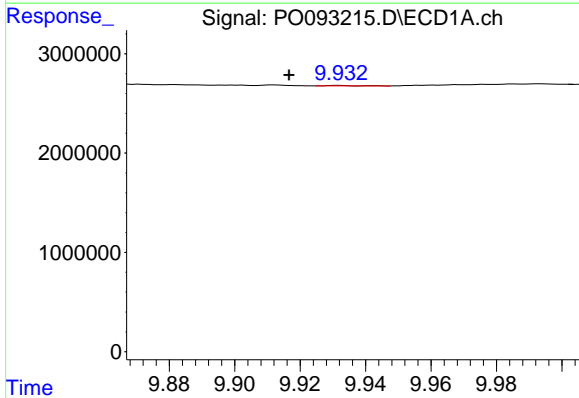
R.T.: 9.496 min
 Delta R.T.: 0.007 min
 Response: 474966
 Conc: 4.45 ng/ml

Instrument :
 ECD_O
 ClientSampleId :



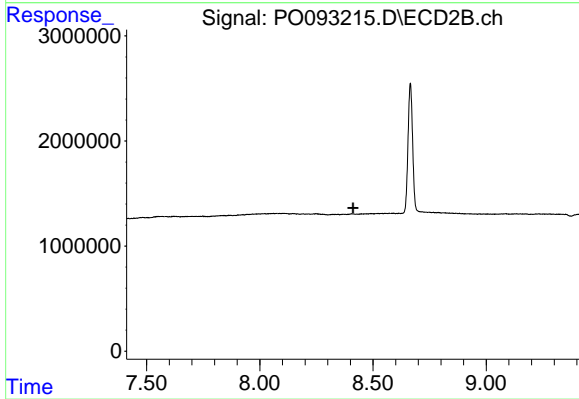
#44 AR-1268-4

R.T.: 0.000 min
 Exp R.T. : 8.118 min
 Response: 0
 Conc: N.D.



#45 AR-1268-5

R.T.: 9.932 min
 Delta R.T.: 0.015 min
 Response: 24625
 Conc: 0.03 ng/ml



#45 AR-1268-5

R.T.: 0.000 min
 Exp R.T. : 8.411 min
 Response: 0
 Conc: N.D.