

Data Path : Z:\pestpcbsrv\HPCHEM1\ECD_O\Data\P0031623\
 Data File : P0093219.D
 Signal(s) : Signal #1: ECD1A.ch Signal #2: ECD2B.ch
 Acq On : 16 Mar 2023 16:30
 Operator : YP/AJ
 Sample : AR1660CCC500
 Misc :
 ALS Vial : 3 Sample Multiplier: 1

Instrument :
 ECD_O
ClientSampleId :
 AR1660CCC500

Integration File signal 1: autoint1.e
 Integration File signal 2: autoint2.e
 Quant Time: Mar 16 21:58:43 2023
 Quant Method : Z:\pestpcbsrv\HPCHEM1\ECD_O\methods\P0031323.M
 Quant Title : GC EXTRACTABLES
 QLast Update : Tue Mar 14 05:32:59 2023
 Response via : Initial Calibration
 Integrator: ChemStation

Volume Inj. : 2 µl
 Signal #1 Phase : ZB-MR1 Signal #2 Phase: ZB-MR2
 Signal #1 Info : 30Mx0.32mmx 0.50µ Signal #2 Info : 30M x 0.32mm x 0.25µm

Compound	RT#1	RT#2	Resp#1	Resp#2	ng/ml	ng/ml

System Monitoring Compounds						
1) SA Tetrachlo...	4.429	3.634	154.2E6	56676246	49.237	50.251
2) SA Decachlor...	10.265	8.666	105.6E6	47297179	48.805	48.305
Target Compounds						
3) L1 AR-1016-1	5.606	4.720	45614300	17475785	477.377	488.208
4) L1 AR-1016-2	5.628	4.738	68066027	25649974	476.680	494.256
5) L1 AR-1016-3	5.691	4.914	43898138	13863116	483.813	501.101
6) L1 AR-1016-4	5.790	4.957	33292347	12377125	491.391	497.797
7) L1 AR-1016-5	6.088	5.170	36267394	15758711	484.391	497.924
31) L7 AR-1260-1	7.225	6.208	62450459	29681000	482.047	488.186
32) L7 AR-1260-2	7.485	6.397	70771795	34778064	479.403	481.046
33) L7 AR-1260-3	7.848	6.551	55699642	31756481	495.193	474.908
34) L7 AR-1260-4	8.074	7.025	62535629	26400942	487.653	479.742
35) L7 AR-1260-5	8.402	7.269	113.7E6	56280927	509.073	478.048

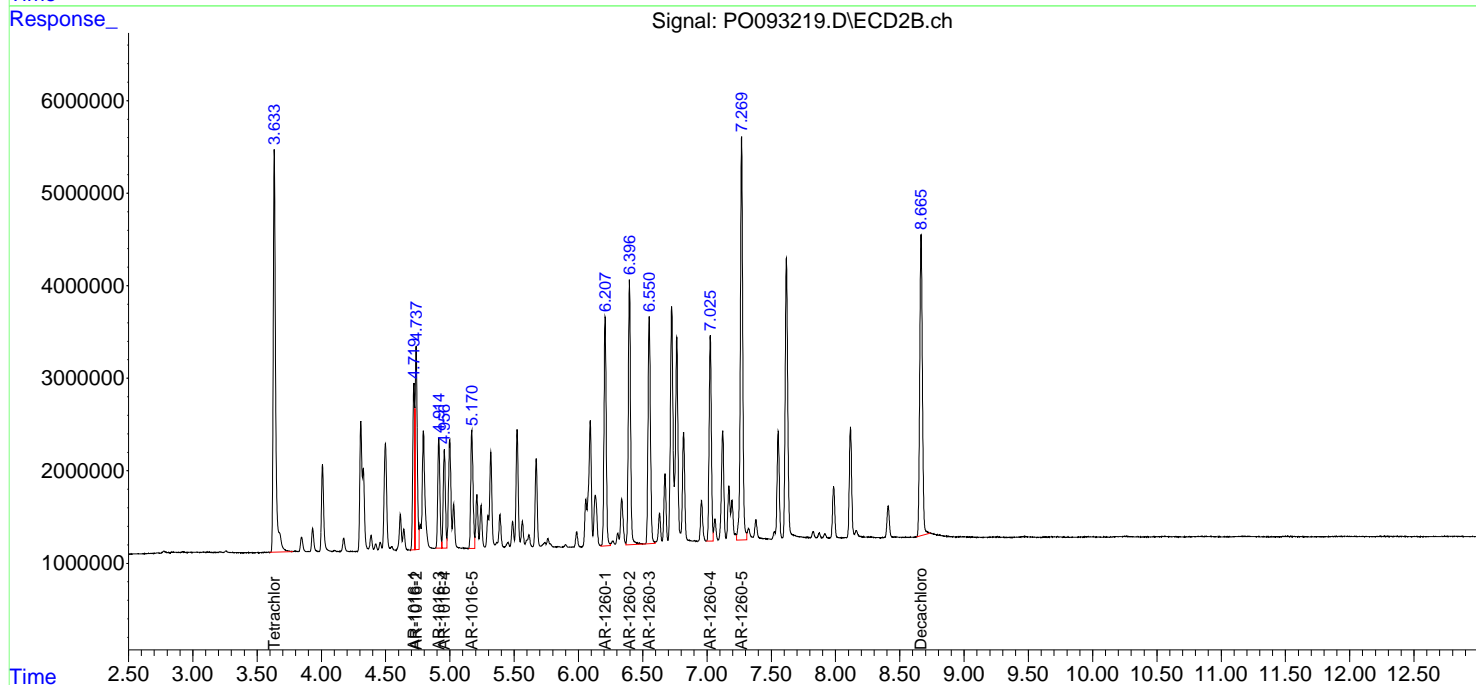
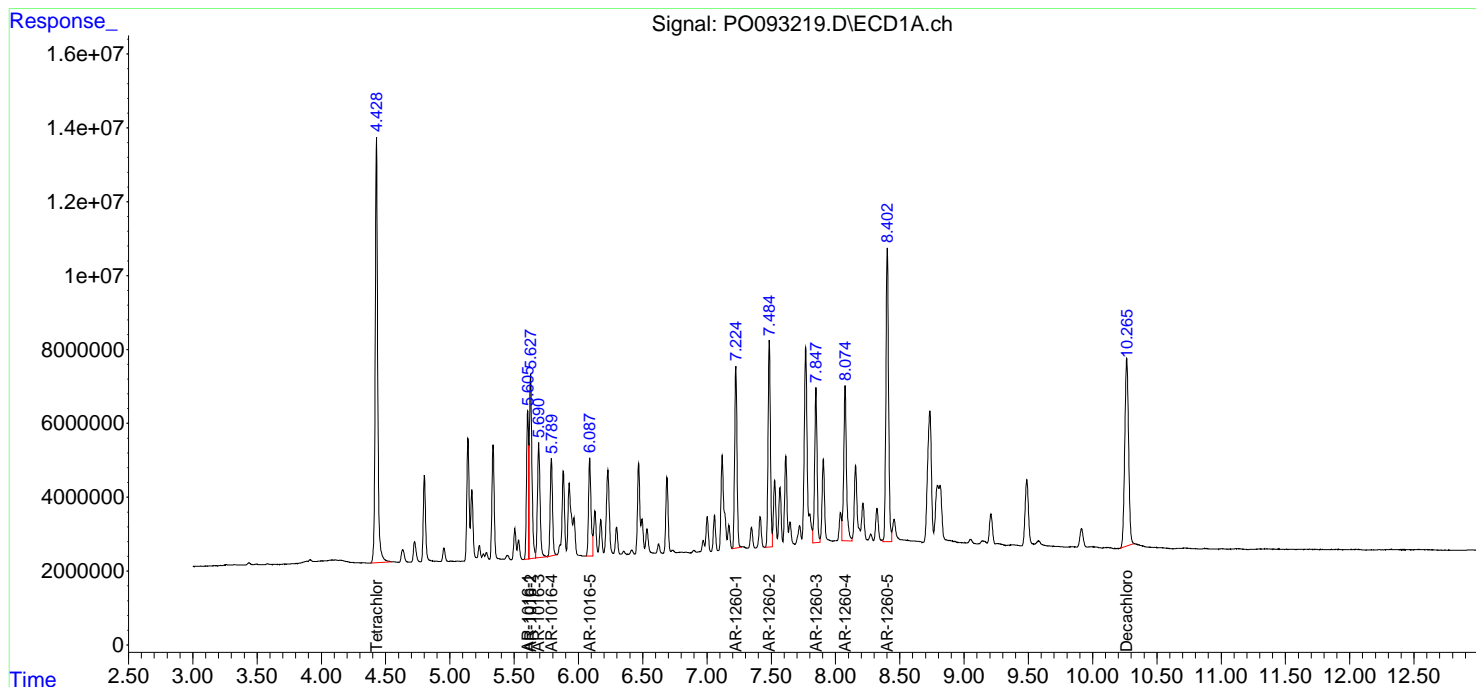
(f)=RT Delta > 1/2 Window (#)=Amounts differ by > 25% (m)=manual int.

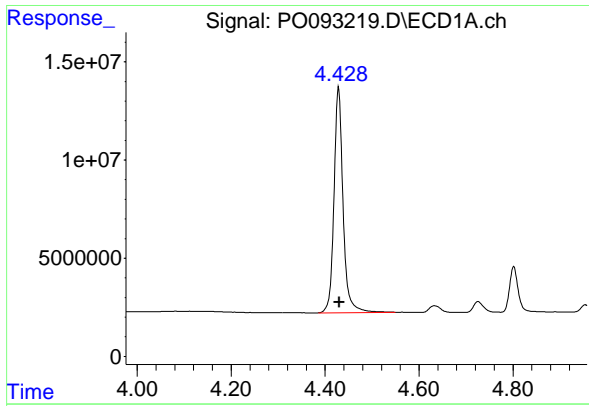
Data Path : Z:\pestpcbsrv\HPCHEM1\ECD_O\Data\PO031623\
 Data File : PO093219.D
 Signal(s) : Signal #1: ECD1A.ch Signal #2: ECD2B.ch
 Acq On : 16 Mar 2023 16:30
 Operator : YP/AJ
 Sample : AR1660CCC500
 Misc :
 ALS Vial : 3 Sample Multiplier: 1

Instrument :
 ECD_O
 ClientSampleId :
 AR1660CCC500

Integration File signal 1: autoint1.e
 Integration File signal 2: autoint2.e
 Quant Time: Mar 16 21:58:43 2023
 Quant Method : Z:\pestpcbsrv\HPCHEM1\ECD_O\methods\PO031323.M
 Quant Title : GC EXTRACTABLES
 QLast Update : Tue Mar 14 05:32:59 2023
 Response via : Initial Calibration
 Integrator: ChemStation

Volume Inj. : 2 µl
 Signal #1 Phase : ZB-MR1 Signal #2 Phase: ZB-MR2
 Signal #1 Info : 30Mx0.32mmx 0.50µ Signal #2 Info : 30M x 0.32mm x 0.25µm

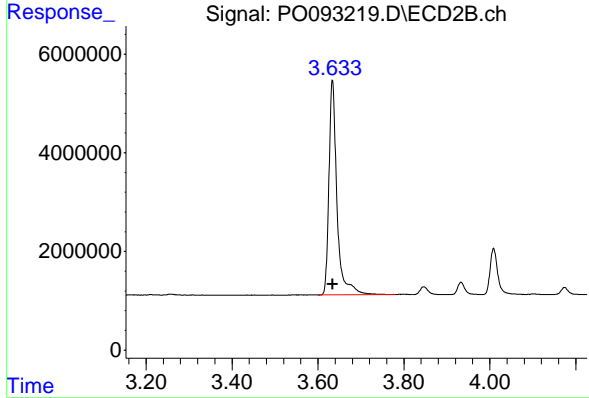




#1 Tetrachloro-m-xylene

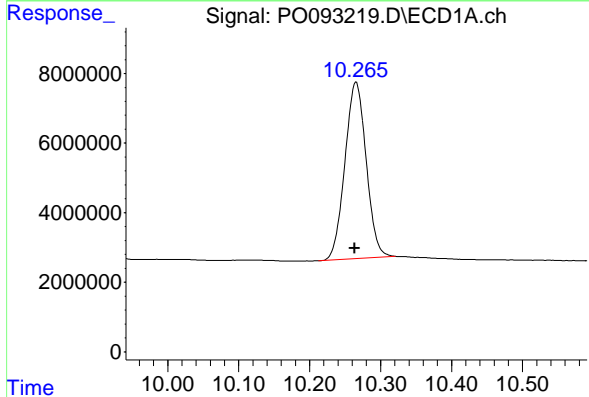
R.T.: 4.429 min
 Delta R.T.: -0.001 min
 Response: 154184681
 Conc: 49.24 ng/ml

Instrument :
 ECD_O
 ClientSampleId :
 AR1660CCC500



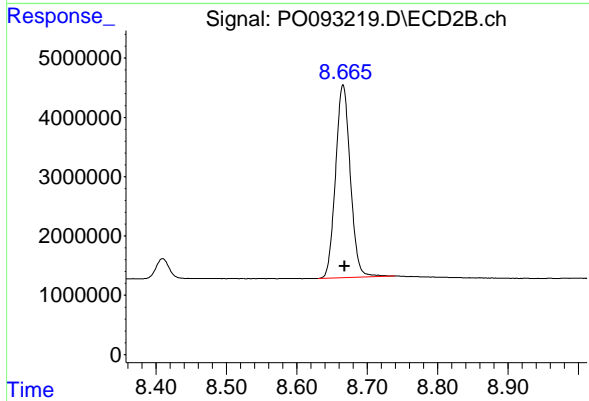
#1 Tetrachloro-m-xylene

R.T.: 3.634 min
 Delta R.T.: -0.001 min
 Response: 56676246
 Conc: 50.25 ng/ml



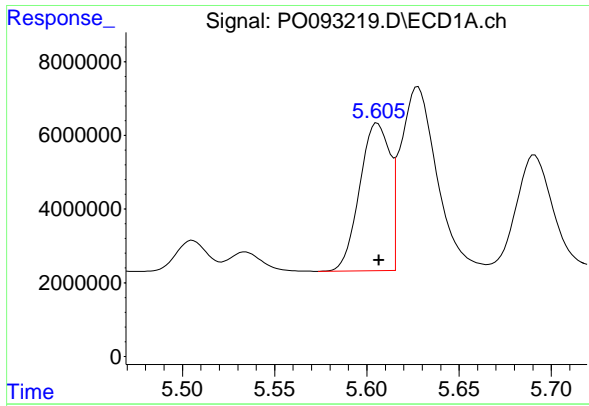
#2 Decachlorobiphenyl

R.T.: 10.265 min
 Delta R.T.: 0.002 min
 Response: 105627657
 Conc: 48.80 ng/ml



#2 Decachlorobiphenyl

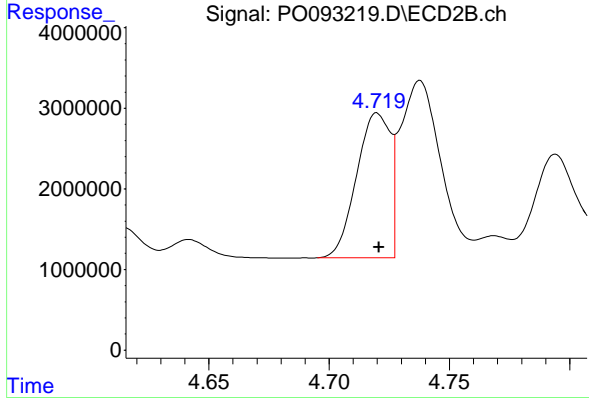
R.T.: 8.666 min
 Delta R.T.: -0.002 min
 Response: 47297179
 Conc: 48.30 ng/ml



#3 AR-1016-1

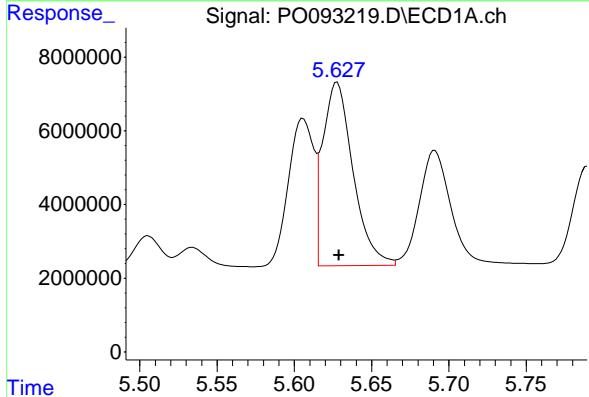
R.T.: 5.606 min
 Delta R.T.: 0.000 min
 Response: 45614300
 Conc: 477.38 ng/ml

Instrument :
 ECD_O
 ClientSampleId :
 AR1660CCC500



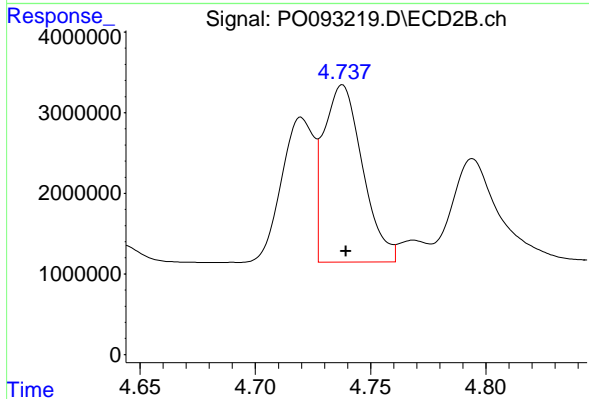
#3 AR-1016-1

R.T.: 4.720 min
 Delta R.T.: 0.000 min
 Response: 17475785
 Conc: 488.21 ng/ml



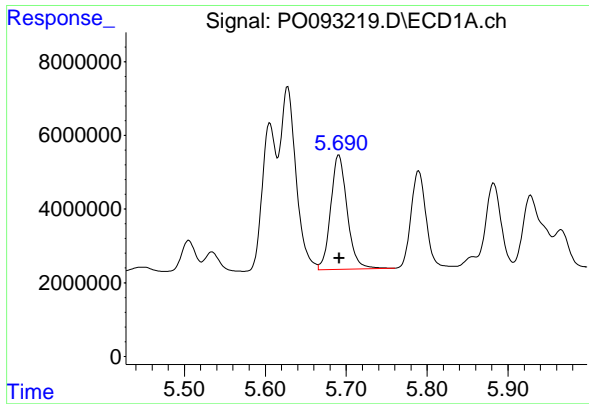
#4 AR-1016-2

R.T.: 5.628 min
 Delta R.T.: -0.001 min
 Response: 68066027
 Conc: 476.68 ng/ml



#4 AR-1016-2

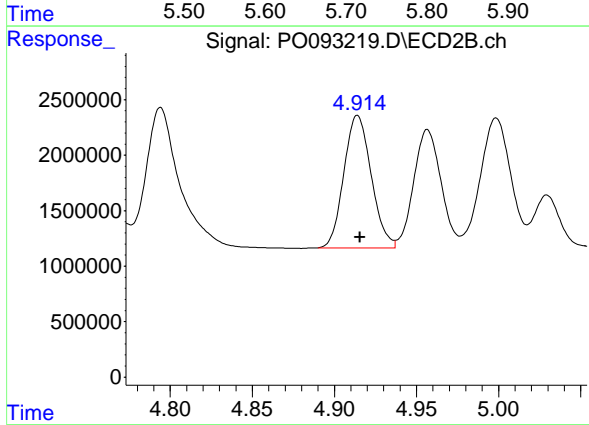
R.T.: 4.738 min
 Delta R.T.: -0.001 min
 Response: 25649974
 Conc: 494.26 ng/ml



#5 AR-1016-3

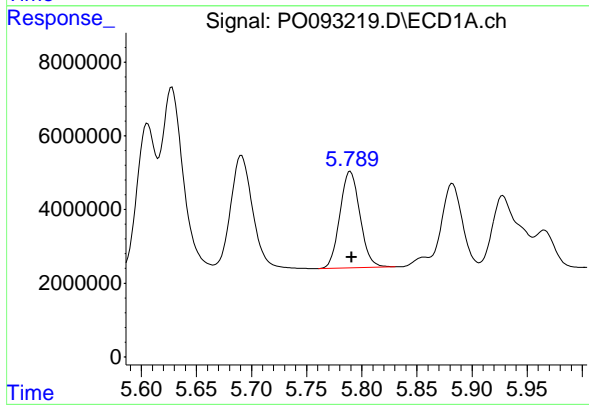
R.T.: 5.691 min
 Delta R.T.: 0.000 min
 Response: 43898138
 Conc: 483.81 ng/ml

Instrument :
 ECD_O
 ClientSampleId :
 AR1660CCC500



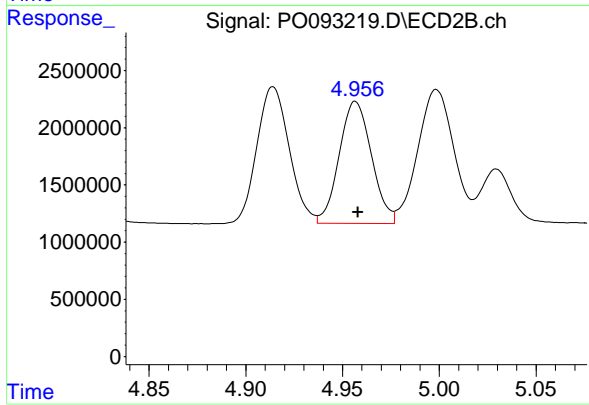
#5 AR-1016-3

R.T.: 4.914 min
 Delta R.T.: -0.001 min
 Response: 13863116
 Conc: 501.10 ng/ml



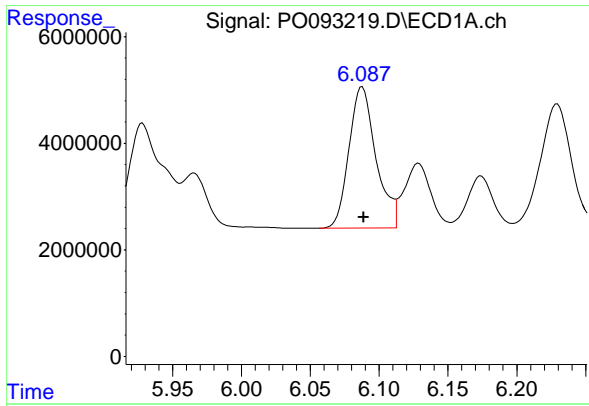
#6 AR-1016-4

R.T.: 5.790 min
 Delta R.T.: -0.001 min
 Response: 33292347
 Conc: 491.39 ng/ml



#6 AR-1016-4

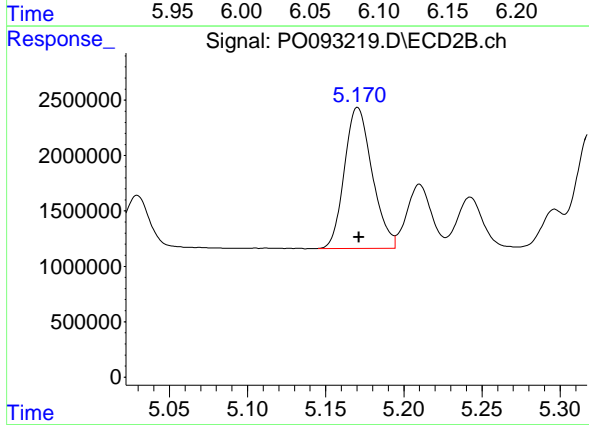
R.T.: 4.957 min
 Delta R.T.: -0.001 min
 Response: 12377125
 Conc: 497.80 ng/ml



#7 AR-1016-5

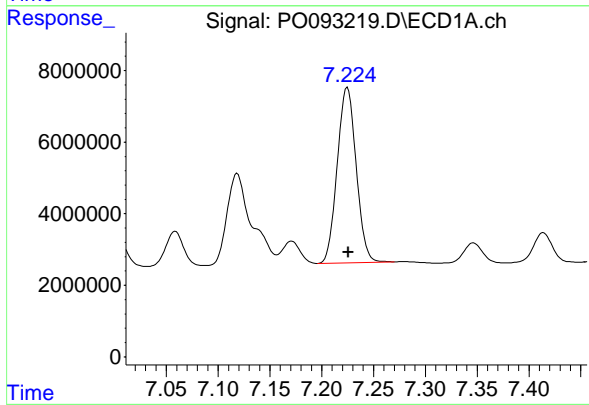
R.T.: 6.088 min
 Delta R.T.: 0.000 min
 Response: 36267394
 Conc: 484.39 ng/ml

Instrument :
 ECD_O
 ClientSampleId :
 AR1660CCC500



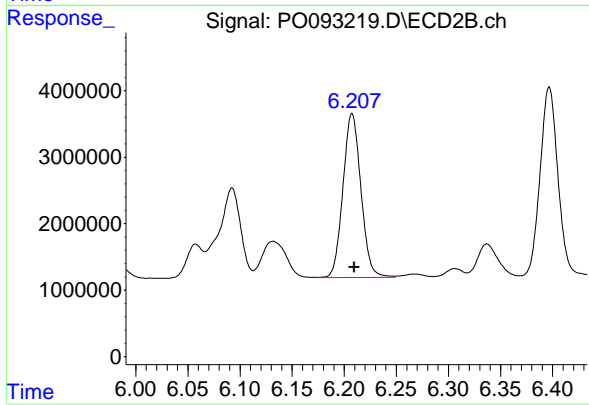
#7 AR-1016-5

R.T.: 5.170 min
 Delta R.T.: 0.000 min
 Response: 15758711
 Conc: 497.92 ng/ml



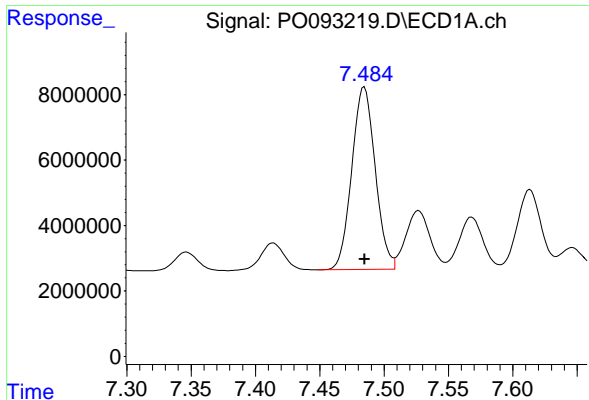
#31 AR-1260-1

R.T.: 7.225 min
 Delta R.T.: 0.000 min
 Response: 62450459
 Conc: 482.05 ng/ml



#31 AR-1260-1

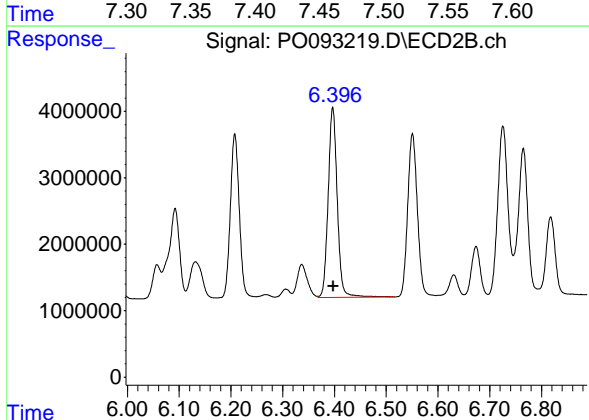
R.T.: 6.208 min
 Delta R.T.: -0.002 min
 Response: 29681000
 Conc: 488.19 ng/ml



#32 AR-1260-2

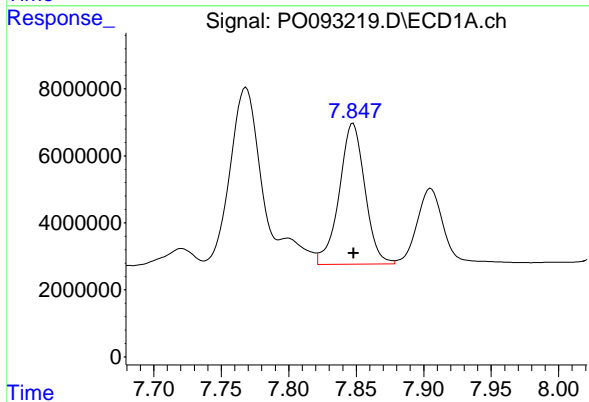
R.T.: 7.485 min
Delta R.T.: 0.000 min
Response: 70771795
Conc: 479.40 ng/ml

Instrument :
ECD_O
ClientSampleId :
AR1660CCC500



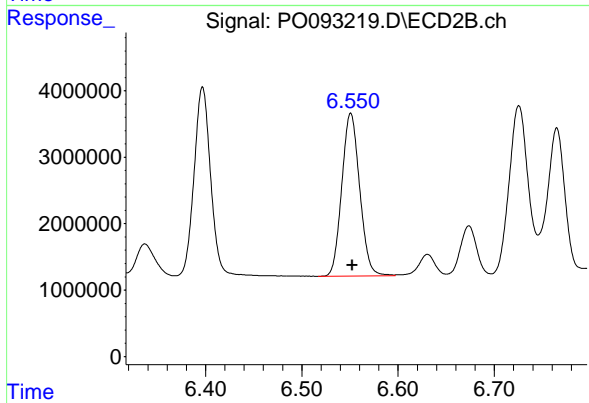
#32 AR-1260-2

R.T.: 6.397 min
Delta R.T.: -0.002 min
Response: 34778064
Conc: 481.05 ng/ml



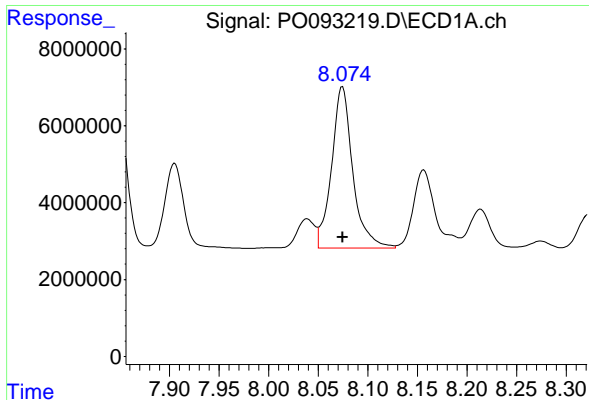
#33 AR-1260-3

R.T.: 7.848 min
Delta R.T.: 0.000 min
Response: 55699642
Conc: 495.19 ng/ml



#33 AR-1260-3

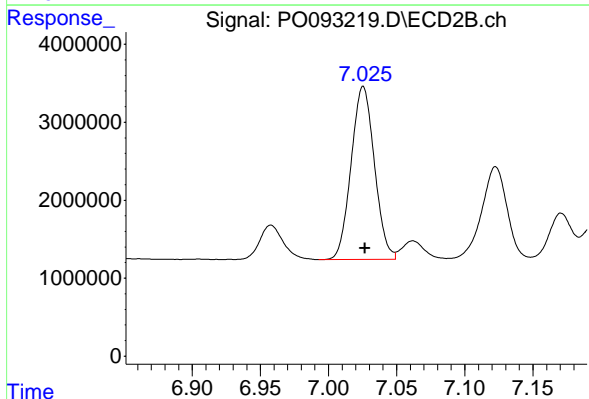
R.T.: 6.551 min
Delta R.T.: -0.002 min
Response: 31756481
Conc: 474.91 ng/ml



#34 AR-1260-4

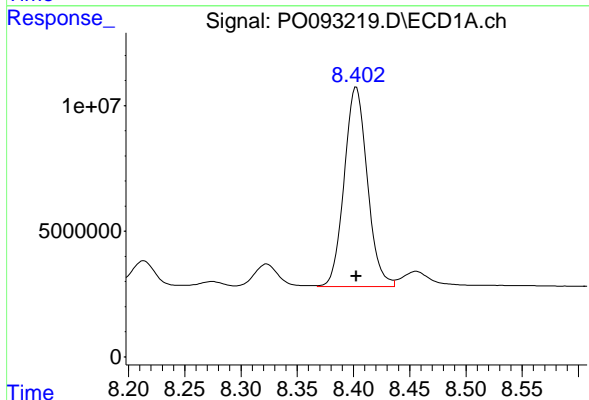
R.T.: 8.074 min
 Delta R.T.: 0.000 min
 Response: 62535629
 Conc: 487.65 ng/ml

Instrument :
 ECD_O
 ClientSampleId :
 AR1660CCC500



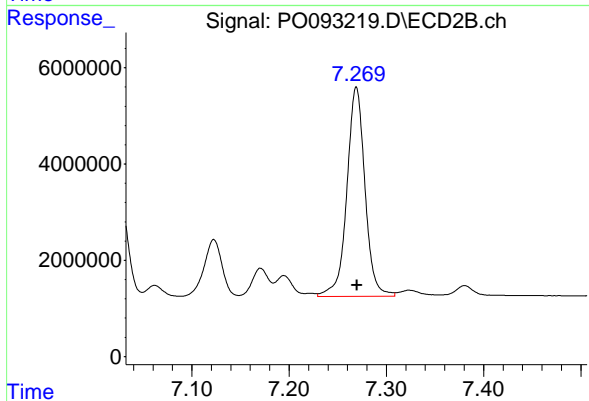
#34 AR-1260-4

R.T.: 7.025 min
 Delta R.T.: -0.001 min
 Response: 26400942
 Conc: 479.74 ng/ml



#35 AR-1260-5

R.T.: 8.402 min
 Delta R.T.: 0.000 min
 Response: 113744901
 Conc: 509.07 ng/ml



#35 AR-1260-5

R.T.: 7.269 min
 Delta R.T.: 0.000 min
 Response: 56280927
 Conc: 478.05 ng/ml