

Data Path : Z:\pestpcbsrv\HPCHEM1\ECD_O\Data\P0031623\
 Data File : P0093222.D
 Signal(s) : Signal #1: ECD1A.ch Signal #2: ECD2B.ch
 Acq On : 16 Mar 2023 17:21
 Operator : YP/AJ
 Sample : AR1254CCC500
 Misc :
 ALS Vial : 6 Sample Multiplier: 1

Instrument :
 ECD_O
 ClientSampleId :
 AR1254CCC500

Integration File signal 1: autoint1.e
 Integration File signal 2: autoint2.e
 Quant Time: Mar 16 22:01:25 2023
 Quant Method : Z:\pestpcbsrv\HPCHEM1\ECD_O\methods\P0031323.M
 Quant Title : GC EXTRACTABLES
 QLast Update : Tue Mar 14 05:32:59 2023
 Response via : Initial Calibration
 Integrator: ChemStation

Volume Inj. : 2 µl
 Signal #1 Phase : ZB-MR1 Signal #2 Phase: ZB-MR2
 Signal #1 Info : 30Mx0.32mmx 0.50µ Signal #2 Info : 30M x 0.32mm x 0.25µm

Compound	RT#1	RT#2	Resp#1	Resp#2	ng/ml	ng/ml

System Monitoring Compounds						
1) SA Tetrachlo...	4.428	3.634	154.9E6	56395132	49.466	50.002
2) SA Decachlor...	10.264	8.666	104.9E6	47919744	48.492	48.941
Target Compounds						
26) L6 AR-1254-1	6.468	5.523	55028302	30600275	470.890	487.547
27) L6 AR-1254-2	6.689	5.672	80835341	27264550	473.087	483.828
28) L6 AR-1254-3	7.058	6.077	80148732	41872730	482.133	486.361
29) L6 AR-1254-4	7.347	6.306	52227760	22923822	489.948	501.277
30) L6 AR-1254-5	7.770	6.727	62474256	36173343	461.375	489.809

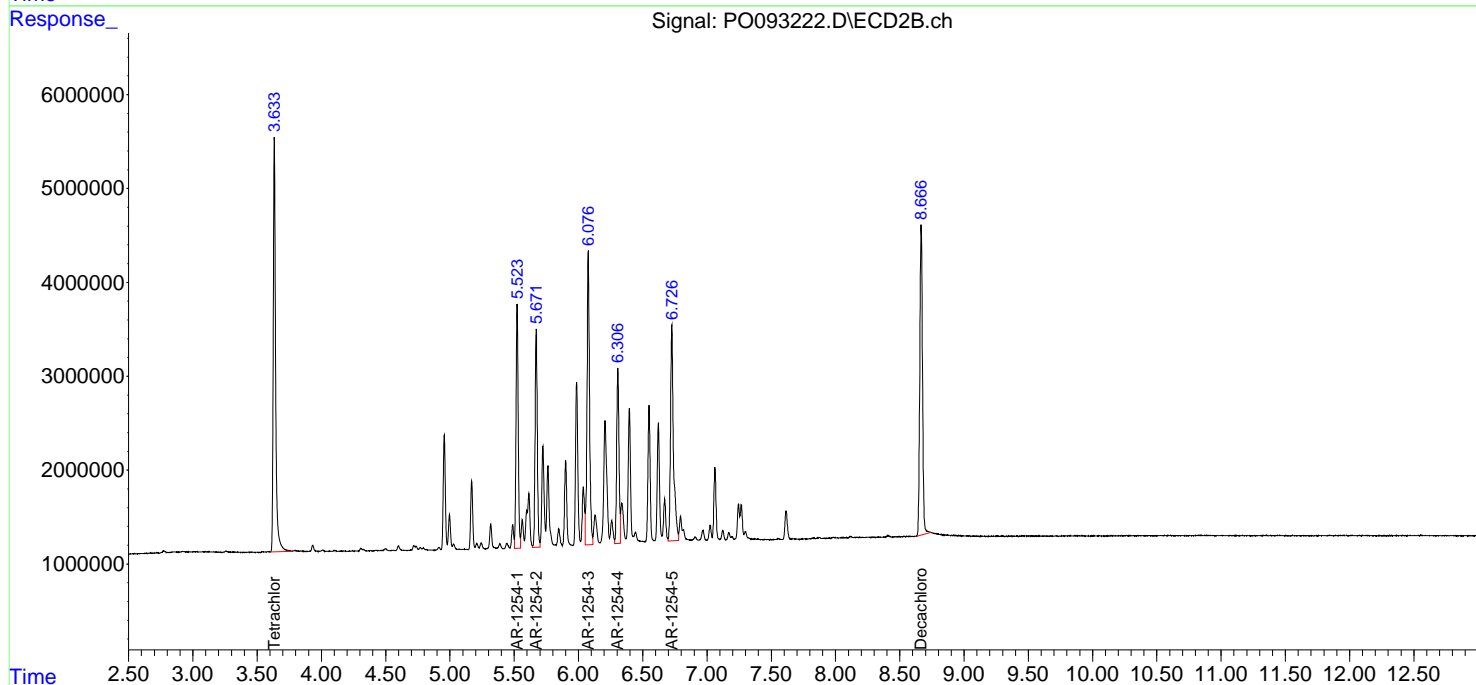
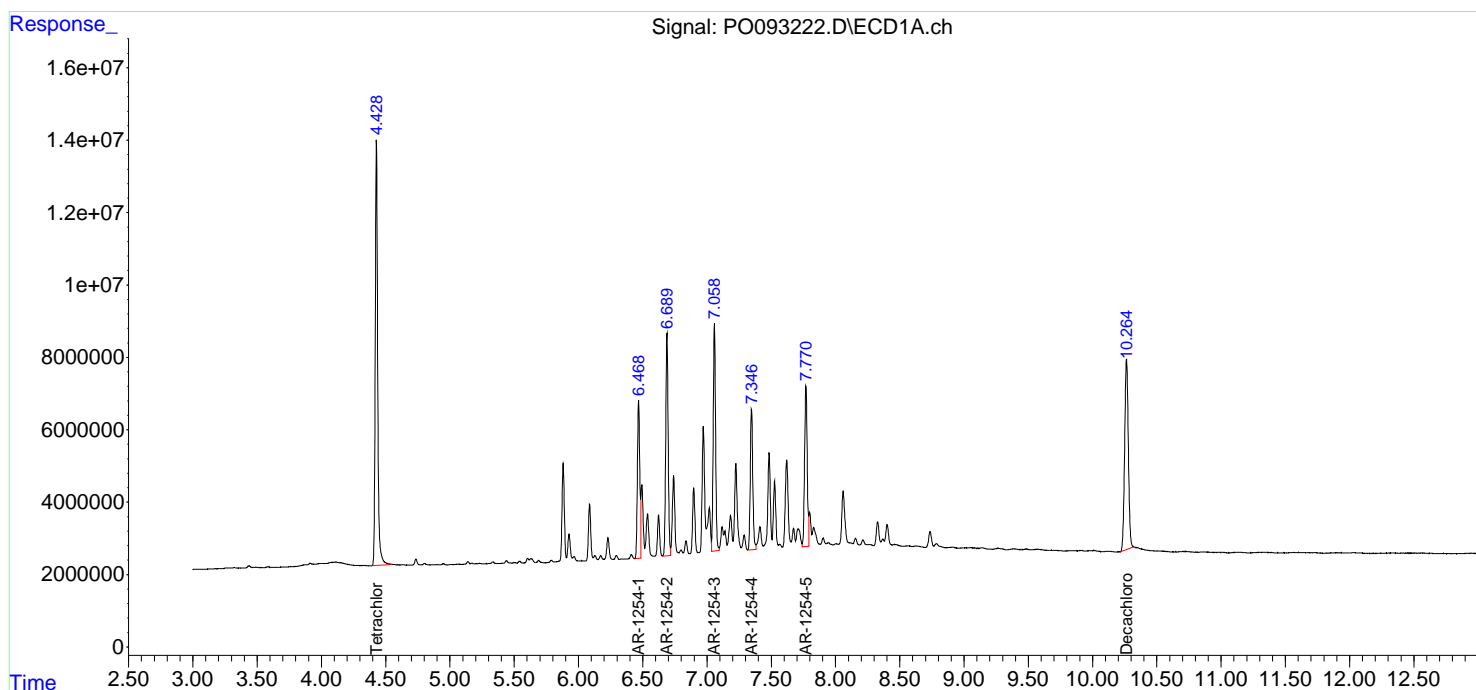
(f)=RT Delta > 1/2 Window (#)=Amounts differ by > 25% (m)=manual int.

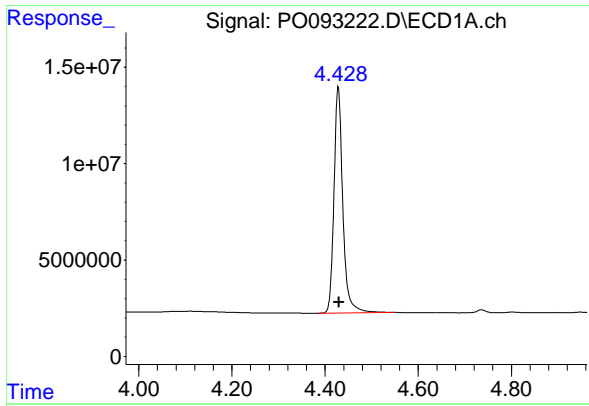
Data Path : Z:\pestpcbsrv\HPCHEM1\ECD_O\Data\PO031623\
 Data File : PO093222.D
 Signal(s) : Signal #1: ECD1A.ch Signal #2: ECD2B.ch
 Acq On : 16 Mar 2023 17:21
 Operator : YP/AJ
 Sample : AR1254CCC500
 Misc :
 ALS Vial : 6 Sample Multiplier: 1

Instrument :
 ECD_O
 ClientSampleId :
 AR1254CCC500

Integration File signal 1: autoint1.e
 Integration File signal 2: autoint2.e
 Quant Time: Mar 16 22:01:25 2023
 Quant Method : Z:\pestpcbsrv\HPCHEM1\ECD_O\methods\PO031323.M
 Quant Title : GC EXTRACTABLES
 QLast Update : Tue Mar 14 05:32:59 2023
 Response via : Initial Calibration
 Integrator: ChemStation

Volume Inj. : 2 µl
 Signal #1 Phase : ZB-MR1 Signal #2 Phase: ZB-MR2
 Signal #1 Info : 30Mx0.32mmx 0.50µm Signal #2 Info : 30M x 0.32mm x 0.25µm

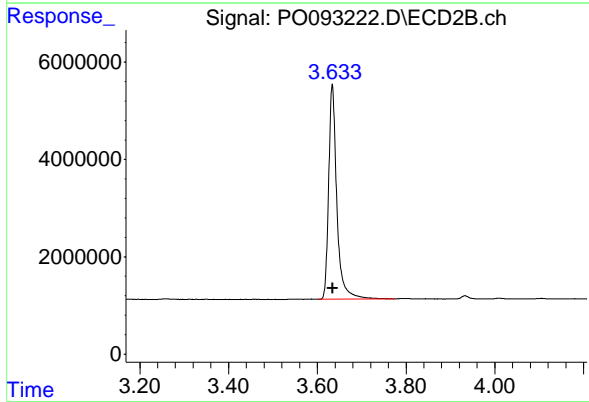




#1 Tetrachloro-m-xylene

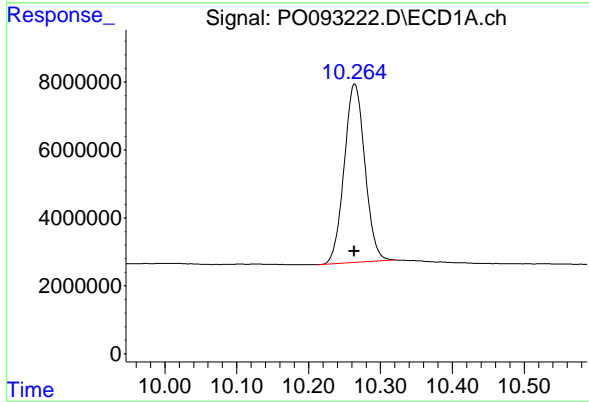
R.T.: 4.428 min
Delta R.T.: -0.002 min
Response: 154903989
Conc: 49.47 ng/ml

Instrument :
ECD_O
ClientSampleId :
AR1254CCC500



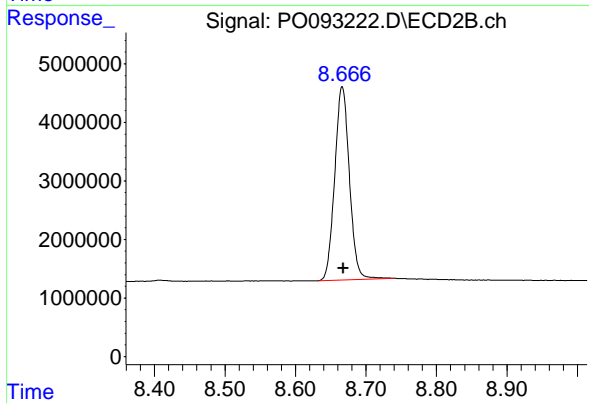
#1 Tetrachloro-m-xylene

R.T.: 3.634 min
Delta R.T.: -0.001 min
Response: 56395132
Conc: 50.00 ng/ml



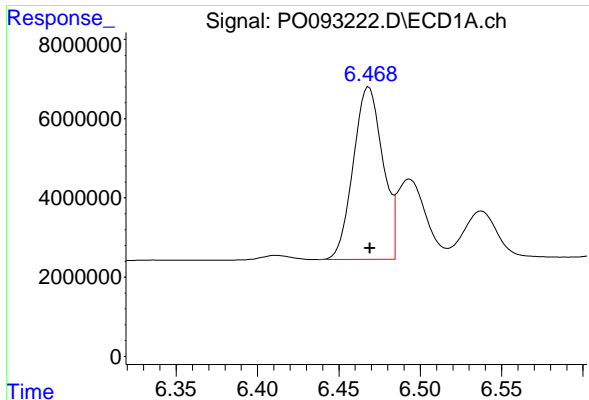
#2 Decachlorobiphenyl

R.T.: 10.264 min
Delta R.T.: 0.001 min
Response: 104949889
Conc: 48.49 ng/ml



#2 Decachlorobiphenyl

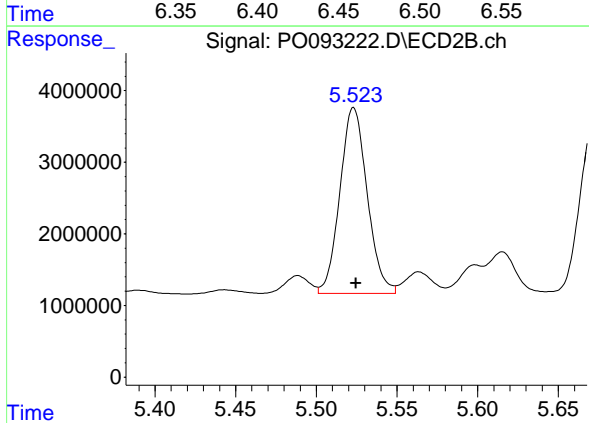
R.T.: 8.666 min
Delta R.T.: -0.002 min
Response: 47919744
Conc: 48.94 ng/ml



#26 AR-1254-1

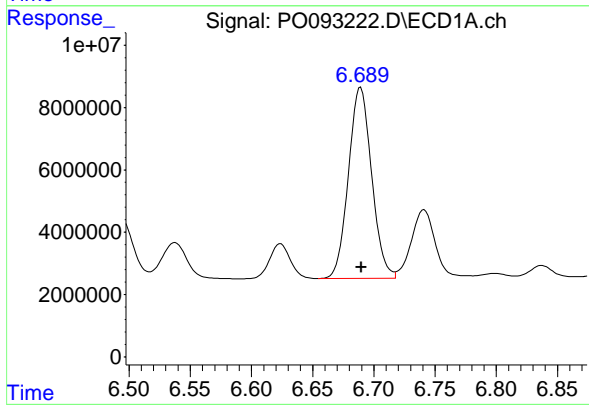
R.T.: 6.468 min
 Delta R.T.: 0.000 min
 Response: 55028302
 Conc: 470.89 ng/ml

Instrument :
 ECD_O
 ClientSampleId :
 AR1254CCC500



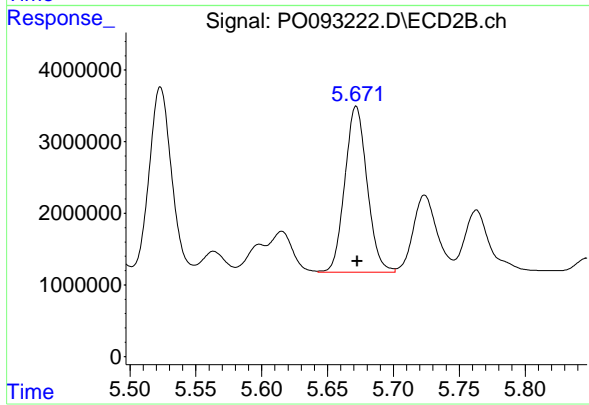
#26 AR-1254-1

R.T.: 5.523 min
 Delta R.T.: -0.001 min
 Response: 30600275
 Conc: 487.55 ng/ml



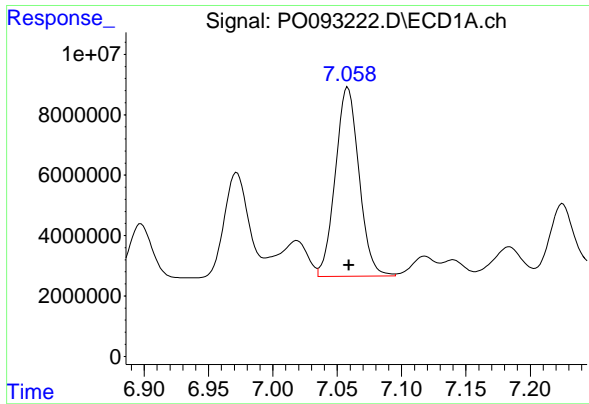
#27 AR-1254-2

R.T.: 6.689 min
 Delta R.T.: 0.000 min
 Response: 80835341
 Conc: 473.09 ng/ml



#27 AR-1254-2

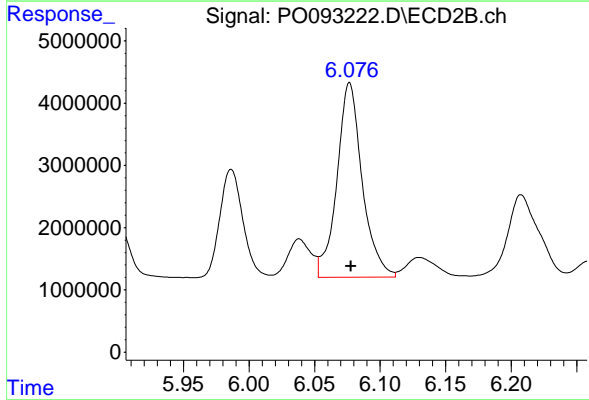
R.T.: 5.672 min
 Delta R.T.: -0.001 min
 Response: 27264550
 Conc: 483.83 ng/ml



#28 AR-1254-3

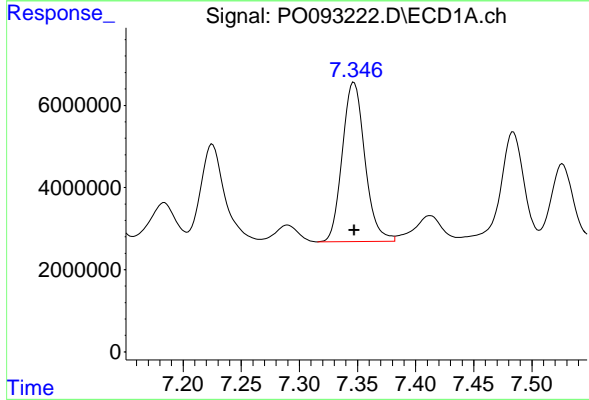
R.T.: 7.058 min
 Delta R.T.: 0.000 min
 Response: 80148732
 Conc: 482.13 ng/ml

Instrument :
 ECD_O
 ClientSampleId :
 AR1254CCC500



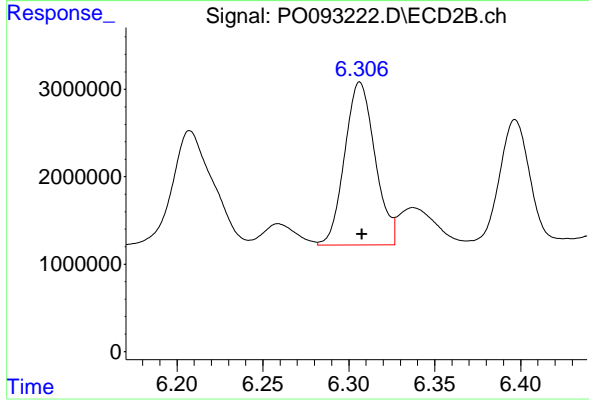
#28 AR-1254-3

R.T.: 6.077 min
 Delta R.T.: -0.001 min
 Response: 41872730
 Conc: 486.36 ng/ml



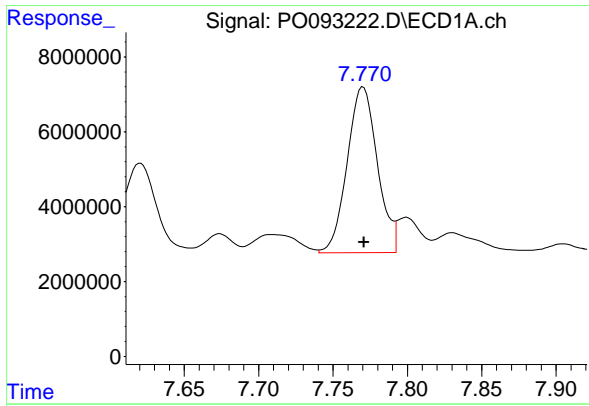
#29 AR-1254-4

R.T.: 7.347 min
 Delta R.T.: 0.000 min
 Response: 52227760
 Conc: 489.95 ng/ml



#29 AR-1254-4

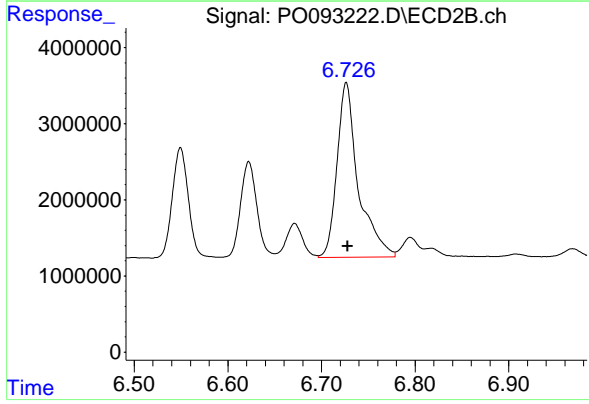
R.T.: 6.306 min
 Delta R.T.: -0.001 min
 Response: 22923822
 Conc: 501.28 ng/ml



#30 AR-1254-5

R.T.: 7.770 min
Delta R.T.: 0.000 min
Response: 62474256
Conc: 461.38 ng/ml

Instrument :
ECD_O
ClientSampleId :
AR1254CCC500



#30 AR-1254-5

R.T.: 6.727 min
Delta R.T.: -0.001 min
Response: 36173343
Conc: 489.81 ng/ml