

Data Path : Z:\pestpcbsrv\HPCHEM1\ECD_0\Data\P0031623\
 Data File : P0093228.D
 Signal(s) : Signal #1: ECD1A.ch Signal #2: ECD2B.ch
 Acq On : 16 Mar 2023 19:05
 Operator : YP/AJ
 Sample : 01939-02
 Misc :
 ALS Vial : 21 Sample Multiplier: 1

Instrument :
 ECD_0
ClientSampleId :
 D2946

Manual Integrations
APPROVED
 Reviewed By :Yogesh Patel 03/17/2023
 Supervised By :Ankita Jodhani 03/17/2023

Integration File signal 1: autoint1.e
 Integration File signal 2: autoint2.e
 Quant Time: Mar 16 22:06:36 2023
 Quant Method : Z:\pestpcbsrv\HPCHEM1\ECD_0\methods\P0031323.M
 Quant Title : GC EXTRACTABLES
 QLast Update : Tue Mar 14 05:32:59 2023
 Response via : Initial Calibration
 Integrator: ChemStation

Volume Inj. : 2 µl
 Signal #1 Phase : ZB-MR1 Signal #2 Phase: ZB-MR2
 Signal #1 Info : 30Mx0.32mmx 0.50µ Signal #2 Info : 30M x 0.32mm x 0.25µm

Compound	RT#1	RT#2	Resp#1	Resp#2	ng/ml	ng/ml

System Monitoring Compounds						
1) SA Tetrachlo...	4.432	3.640	37994452	14957011	12.133	13.261
2) SA Decachlor...	10.265	8.666	47360266	24713090	21.883	25.240
Target Compounds						
26) L6 AR-1254-1	6.470	5.527	49045005	26027551	419.689	414.691
27) L6 AR-1254-2	6.691	5.675	64412502	18172586	376.973	322.485
28) L6 AR-1254-3	7.060	6.079	50361077	24408136	302.946	283.506
29) L6 AR-1254-4	7.347	6.309	28240602	10627843	264.925	232.400
30) L6 AR-1254-5	7.771	6.728	33530729	19897419	247.626m	269.423

(f)=RT Delta > 1/2 Window (#)=Amounts differ by > 25% (m)=manual int.

Data Path : Z:\pestpcbsrv\HPCHEM1\ECD_O\Data\PO031623\
 Data File : PO093228.D
 Signal(s) : Signal #1: ECD1A.ch Signal #2: ECD2B.ch
 Acq On : 16 Mar 2023 19:05
 Operator : YP/AJ
 Sample : 01939-02
 Misc :
 ALS Vial : 21 Sample Multiplier: 1

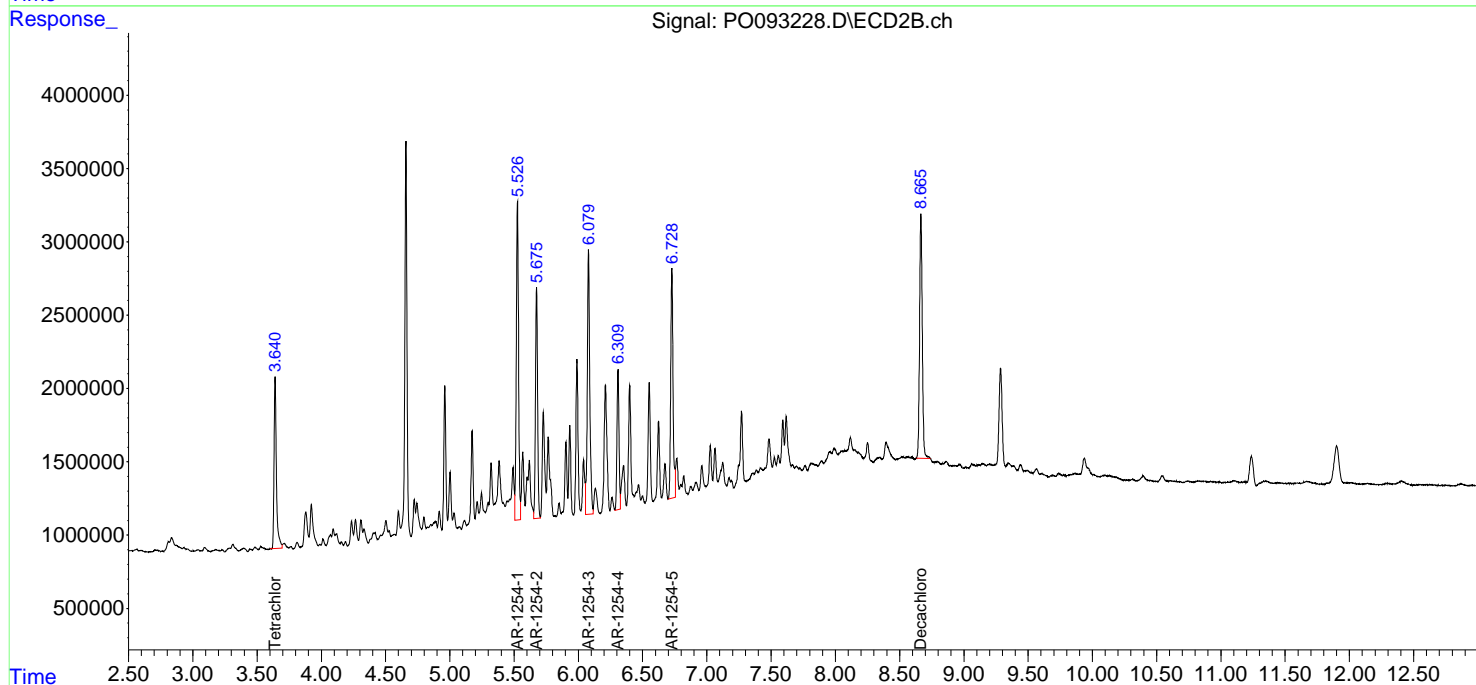
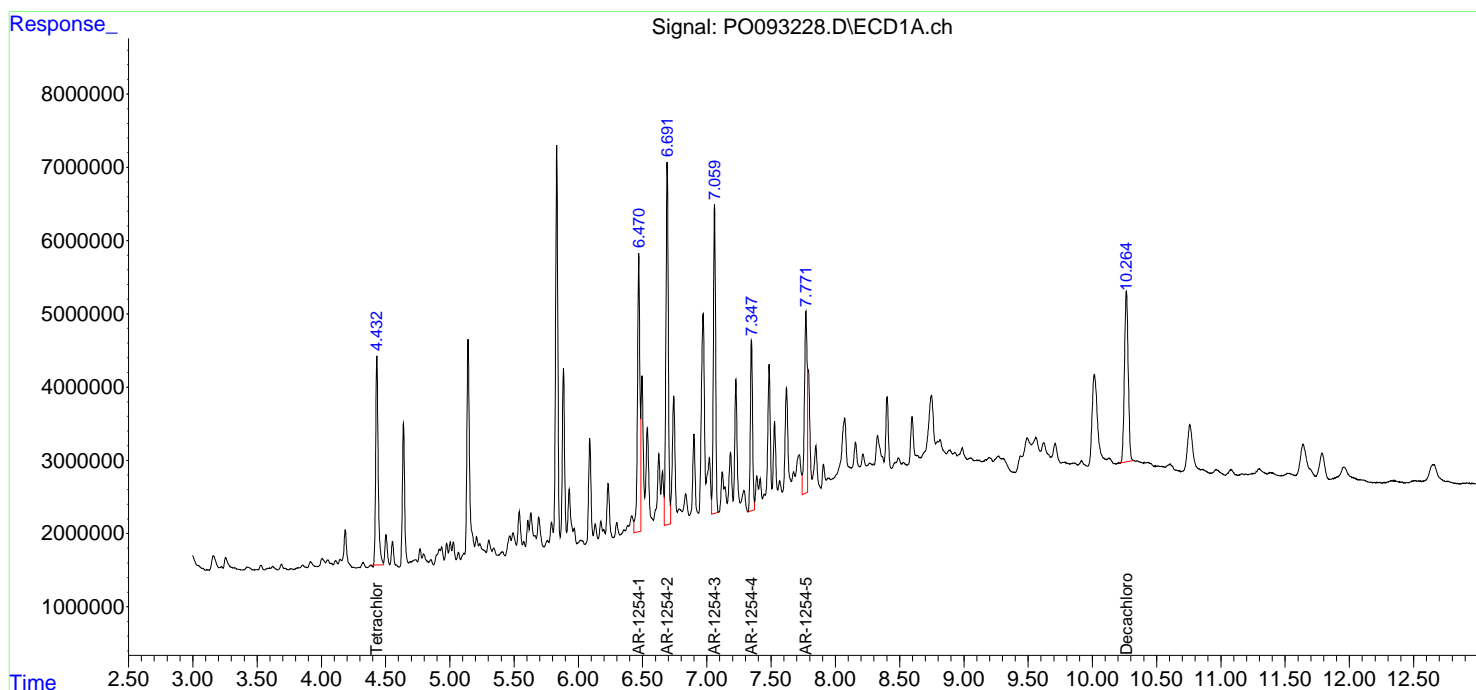
Instrument :
 ECD_O
 ClientSampleId :
 D2946

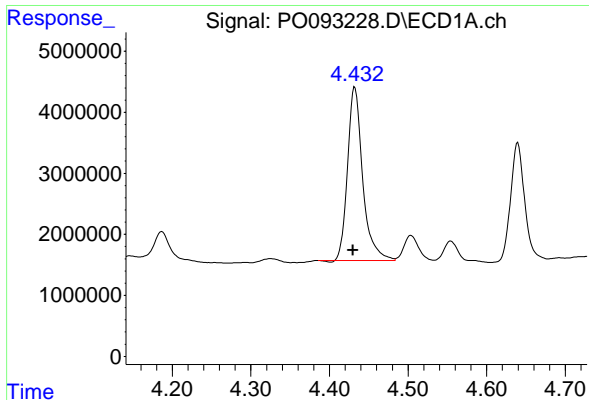
Manual Integrations
APPROVED

Reviewed By :Yogesh Patel 03/17/2023
 Supervised By :Ankita Jodhani 03/17/2023

Integration File signal 1: autoint1.e
 Integration File signal 2: autoint2.e
 Quant Time: Mar 16 22:06:36 2023
 Quant Method : Z:\pestpcbsrv\HPCHEM1\ECD_O\methods\PO031323.M
 Quant Title : GC EXTRACTABLES
 QLast Update : Tue Mar 14 05:32:59 2023
 Response via : Initial Calibration
 Integrator: ChemStation

Volume Inj. : 2 µl
 Signal #1 Phase : ZB-MR1 Signal #2 Phase: ZB-MR2
 Signal #1 Info : 30Mx0.32mmx 0.50µm Signal #2 Info : 30M x 0.32mm x 0.25µm





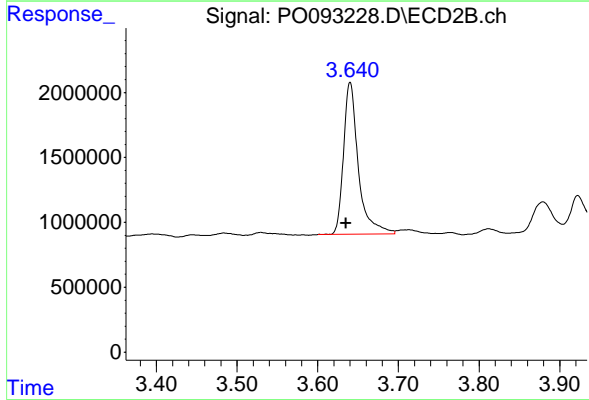
#1 Tetrachloro-m-xylene

R.T.: 4.432 min
 Delta R.T.: 0.002 min
 Response: 37994452
 Conc: 12.13 ng/ml

Instrument :
 ECD_O
 ClientSampleId :
 D2946

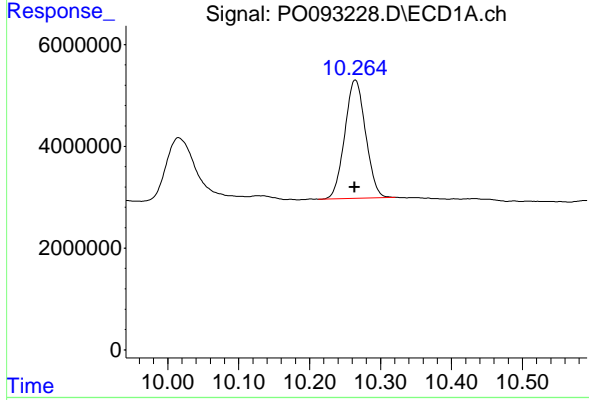
Manual Integrations
 APPROVED

Reviewed By :Yogesh Patel 03/17/2023
 Supervised By :Ankita Jodhani 03/17/2023



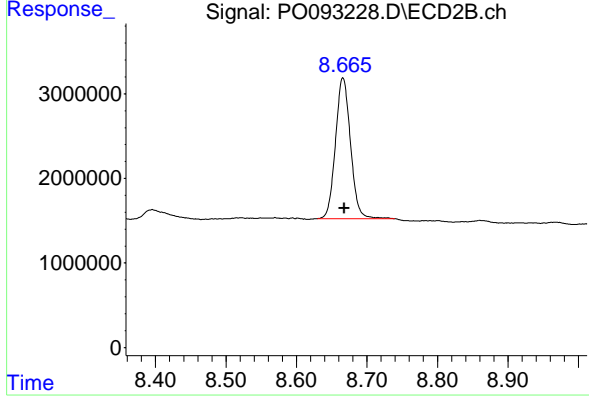
#1 Tetrachloro-m-xylene

R.T.: 3.640 min
 Delta R.T.: 0.005 min
 Response: 14957011
 Conc: 13.26 ng/ml



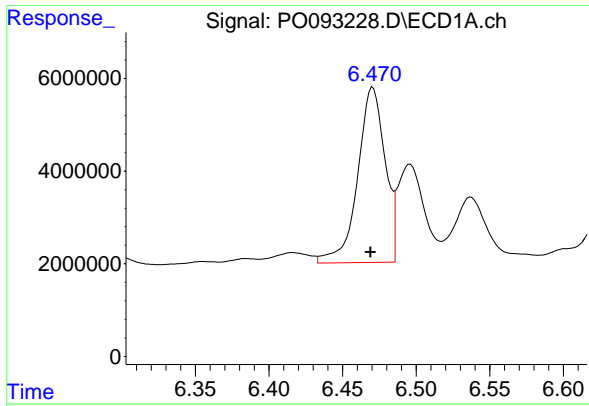
#2 Decachlorobiphenyl

R.T.: 10.265 min
 Delta R.T.: 0.001 min
 Response: 47360266
 Conc: 21.88 ng/ml



#2 Decachlorobiphenyl

R.T.: 8.666 min
 Delta R.T.: -0.002 min
 Response: 24713090
 Conc: 25.24 ng/ml



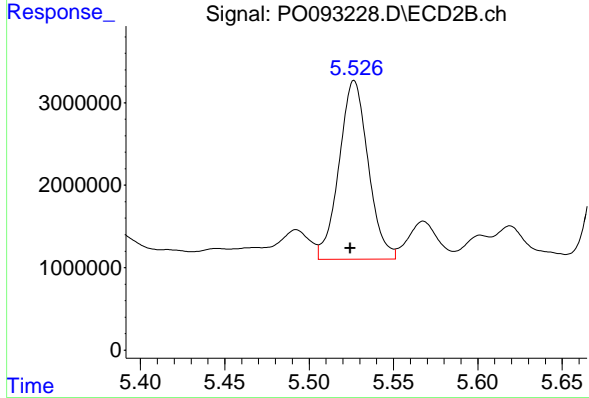
#26 AR-1254-1

R.T.: 6.470 min
 Delta R.T.: 0.002 min
 Response: 49045005
 Conc: 419.69 ng/ml

Instrument :
 ECD_O
 ClientSampleId :
 D2946

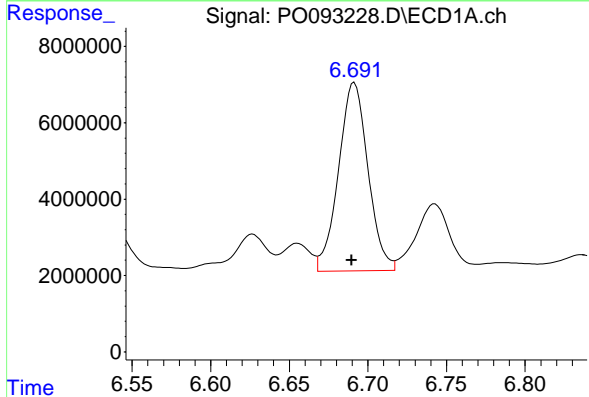
Manual Integrations
 APPROVED

Reviewed By :Yogesh Patel 03/17/2023
 Supervised By :Ankita Jodhani 03/17/2023



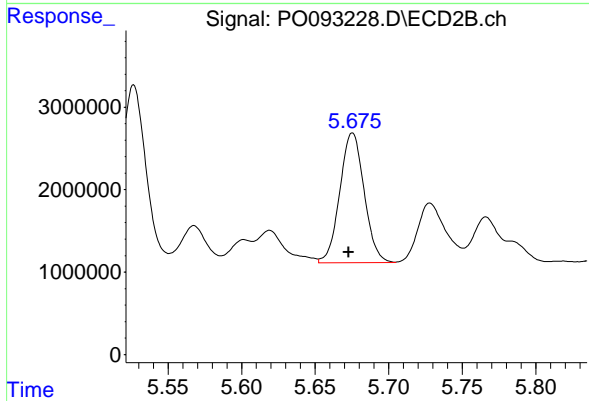
#26 AR-1254-1

R.T.: 5.527 min
 Delta R.T.: 0.002 min
 Response: 26027551
 Conc: 414.69 ng/ml



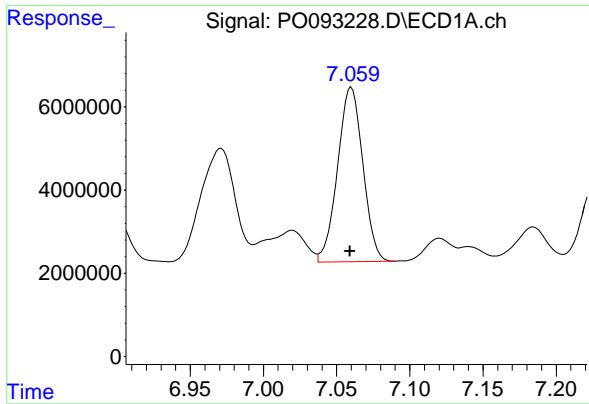
#27 AR-1254-2

R.T.: 6.691 min
 Delta R.T.: 0.002 min
 Response: 64412502
 Conc: 376.97 ng/ml



#27 AR-1254-2

R.T.: 5.675 min
 Delta R.T.: 0.003 min
 Response: 18172586
 Conc: 322.48 ng/ml



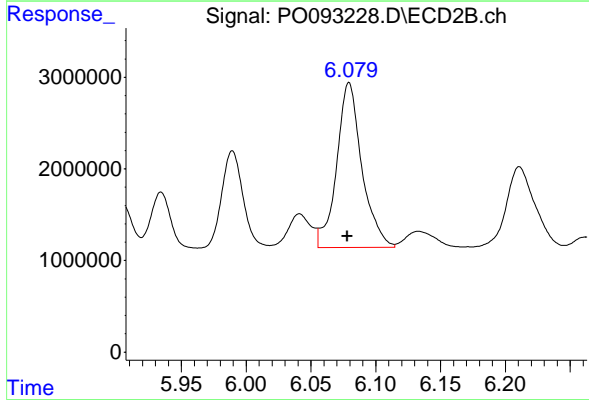
#28 AR-1254-3

R.T.: 7.060 min
 Delta R.T.: 0.000 min
 Response: 50361077
 Conc: 302.95 ng/ml

Instrument :
 ECD_O
 ClientSampleId :
 D2946

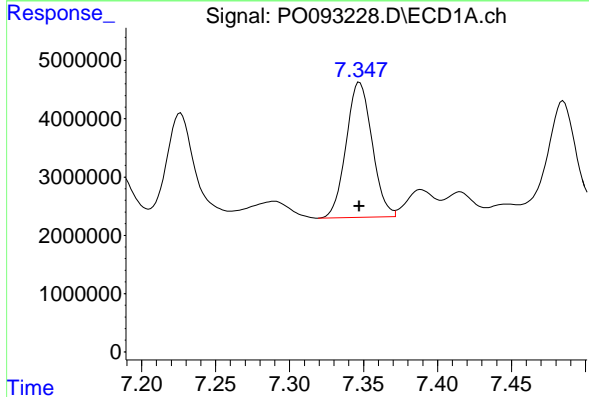
Manual Integrations
 APPROVED

Reviewed By :Yogesh Patel 03/17/2023
 Supervised By :Ankita Jodhani 03/17/2023



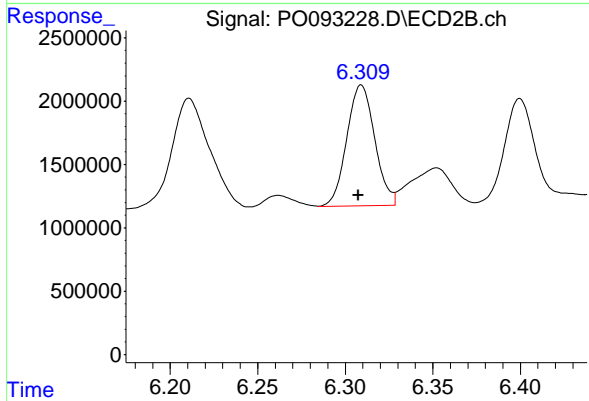
#28 AR-1254-3

R.T.: 6.079 min
 Delta R.T.: 0.002 min
 Response: 24408136
 Conc: 283.51 ng/ml



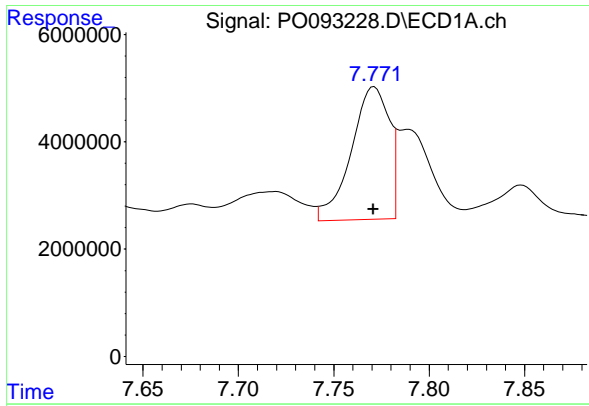
#29 AR-1254-4

R.T.: 7.347 min
 Delta R.T.: 0.000 min
 Response: 28240602
 Conc: 264.92 ng/ml



#29 AR-1254-4

R.T.: 6.309 min
 Delta R.T.: 0.002 min
 Response: 10627843
 Conc: 232.40 ng/ml



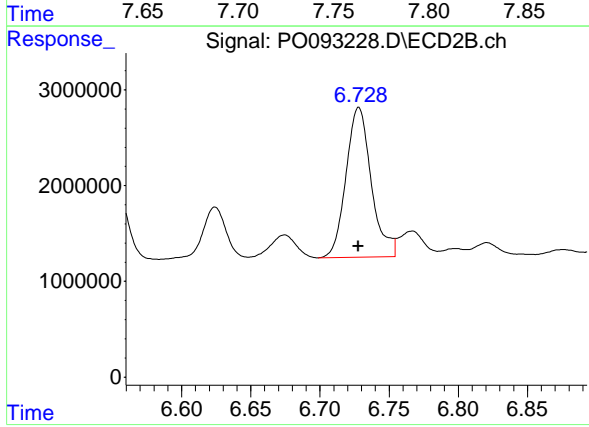
#30 AR-1254-5

R.T.: 7.771 min
 Delta R.T.: 0.000 min
 Response: 33530729
 Conc: 247.63 ng/ml

Instrument :
 ECD_O
 ClientSampleId :
 D2946

Manual Integrations
 APPROVED

Reviewed By :Yogesh Patel 03/17/2023
 Supervised By :Ankita Jodhani 03/17/2023



#30 AR-1254-5

R.T.: 6.728 min
 Delta R.T.: 0.000 min
 Response: 19897419
 Conc: 269.42 ng/ml