

Data Path : Z:\pestpcbsrv\HPCHEM1\ECD_0\Data\P0031721\
 Data File : P0076224.D
 Signal(s) : Signal #1: ECD1A.CH Signal #2: ECD2B.CH
 Acq On : 17 Mar 2021 10:05
 Operator : DD\AJ
 Sample : PB135083BL
 Misc :
 ALS Vial : 4 Sample Multiplier: 1

Instrument :
 ECD_0
 ClientSampleId :
 PB135083BL

Integration File signal 1: autoint1.e
 Integration File signal 2: autoint2.e
 Quant Time: Mar 17 14:52:50 2021
 Quant Method : Z:\pestpcbsrv\HPCHEM1\ECD_0\methods\P0031521.M
 Quant Title : GC EXTRACTABLES
 QLast Update : Tue Mar 16 07:18:57 2021
 Response via : Initial Calibration
 Integrator: ChemStation 6890 Scale Mode: Small noise peaks clipped

Volume Inj. : 2 µl
 Signal #1 Phase : ZB-MR1 Signal #2 Phase: ZB-MR2
 Signal #1 Info : 30Mx0.32mmx 0.50µ Signal #2 Info : 30M x 0.32mm x 0.25µm

Compound	RT#1	RT#2	Resp#1	Resp#2	ng/ml	ng/ml

System Monitoring Compounds						
1) SA Tetrachlo...	4.922	3.935	1171857	837895	20.628	20.083
2) SA Decachlor...	10.923	9.202	858917	803155	22.331	20.917

Target Compounds

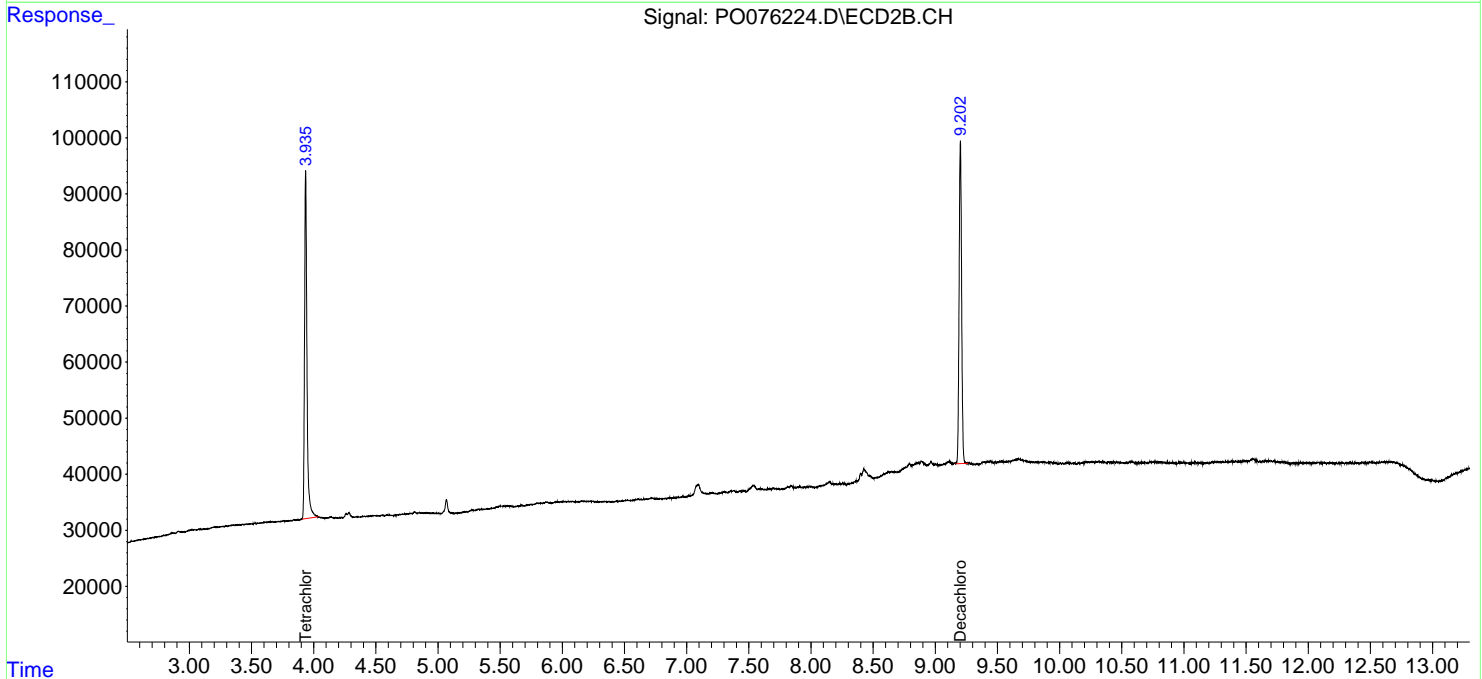
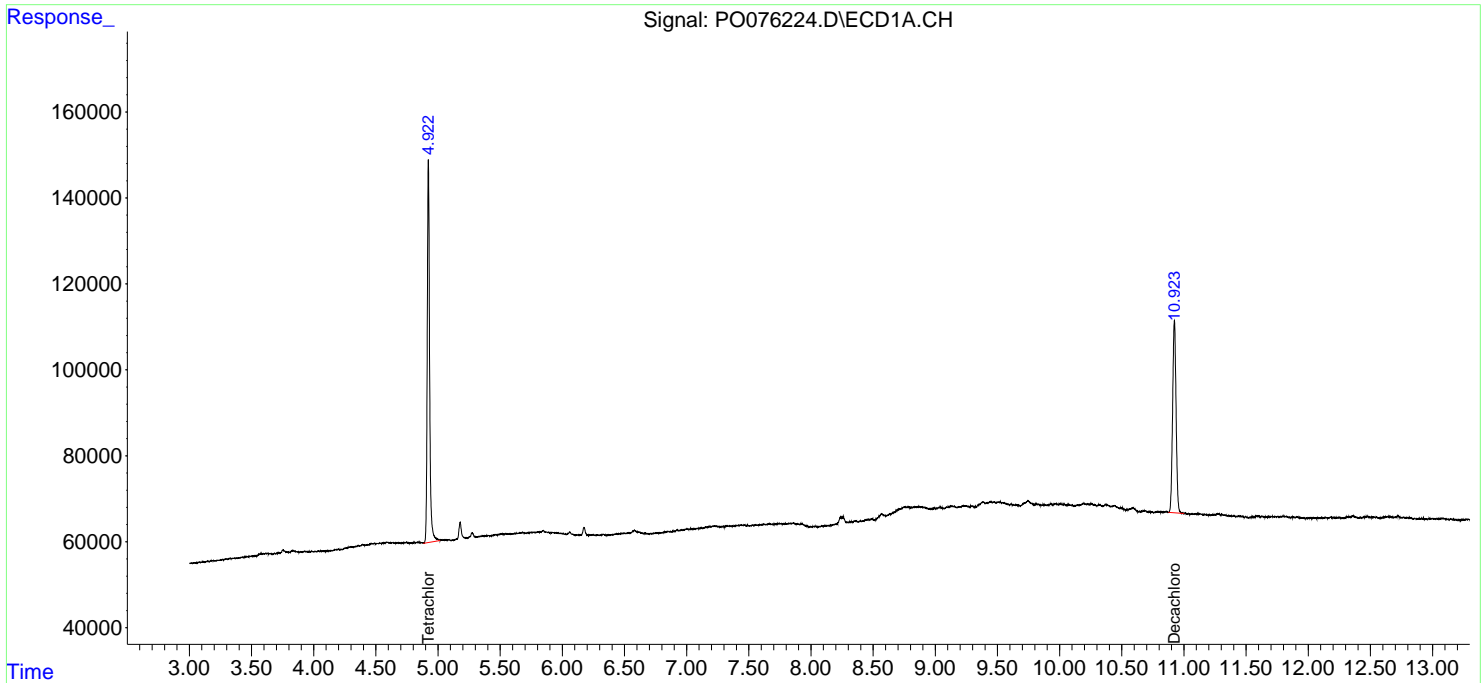
(f)=RT Delta > 1/2 Window (#)=Amounts differ by > 25% (m)=manual int.

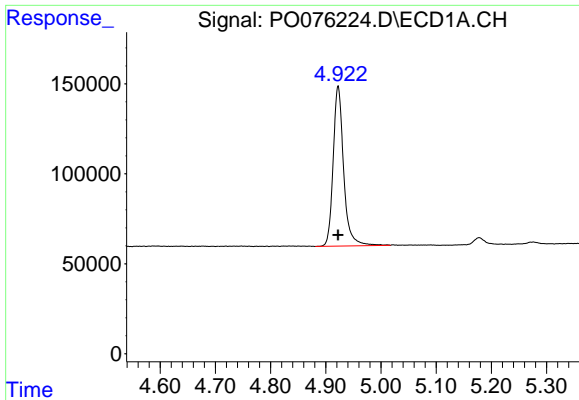
Data Path : Z:\pestpcbsrv\HPCHEM1\ECD_0\Data\P0031721\
 Data File : P0076224.D
 Signal(s) : Signal #1: ECD1A.CH Signal #2: ECD2B.CH
 Acq On : 17 Mar 2021 10:05
 Operator : DD\AJ
 Sample : PB135083BL
 Misc :
 ALS Vial : 4 Sample Multiplier: 1

Instrument :
 ECD_O
 ClientSampleId :
 PB135083BL

Integration File signal 1: autoint1.e
 Integration File signal 2: autoint2.e
 Quant Time: Mar 17 14:52:50 2021
 Quant Method : Z:\pestpcbsrv\HPCHEM1\ECD_0\methods\P0031521.M
 Quant Title : GC EXTRACTABLES
 QLast Update : Tue Mar 16 07:18:57 2021
 Response via : Initial Calibration
 Integrator: ChemStation 6890 Scale Mode: Small noise peaks clipped

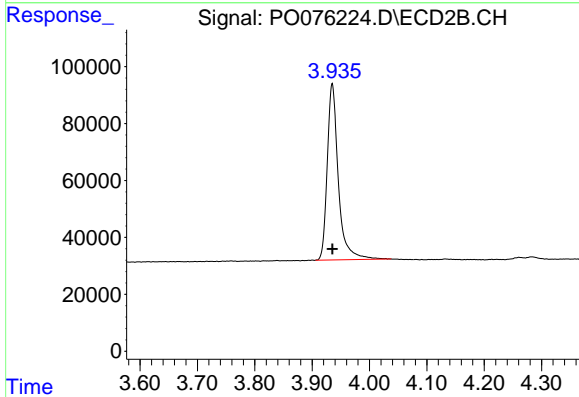
Volume Inj. : 2 µl
 Signal #1 Phase : ZB-MR1 Signal #2 Phase: ZB-MR2
 Signal #1 Info : 30Mx0.32mmx 0.50µ Signal #2 Info : 30M x 0.32mm x 0.25µm



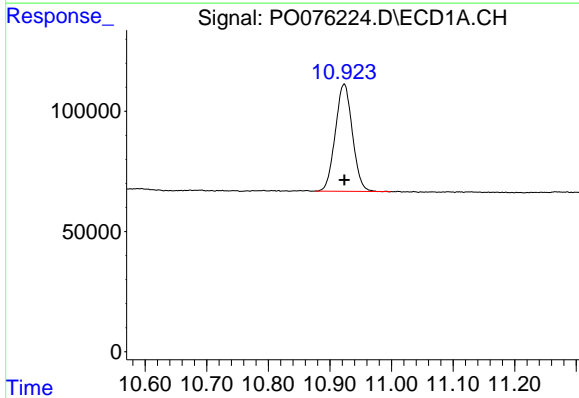


#1 Tetrachloro-m-xylene
 R.T.: 4.922 min
 Delta R.T.: 0.000 min
 Response: 1171857
 Conc: 20.63 ng/ml

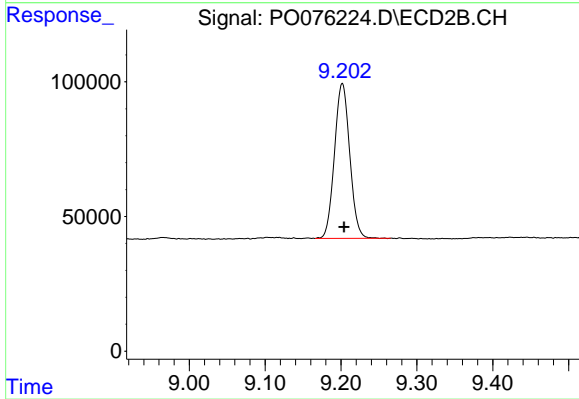
Instrument :
 ECD_O
 ClientSampleId :
 PB135083BL



#1 Tetrachloro-m-xylene
 R.T.: 3.935 min
 Delta R.T.: 0.000 min
 Response: 837895
 Conc: 20.08 ng/ml



#2 Decachlorobiphenyl
 R.T.: 10.923 min
 Delta R.T.: 0.000 min
 Response: 858917
 Conc: 22.33 ng/ml



#2 Decachlorobiphenyl
 R.T.: 9.202 min
 Delta R.T.: -0.002 min
 Response: 803155
 Conc: 20.92 ng/ml