

Data Path : Z:\pestpcbsrv\HPCHEM1\ECD\_0\Data\P0031721\  
 Data File : P0076240.D  
 Signal(s) : Signal #1: ECD1A.CH Signal #2: ECD2B.CH  
 Acq On : 17 Mar 2021 15:40  
 Operator : DD\AJ  
 Sample : M1687-01  
 Misc :  
 ALS Vial : 15 Sample Multiplier: 1

Instrument :  
 ECD\_0  
 ClientSampleId :  
 AUD-1052-1053

Integration File signal 1: autoint1.e  
 Integration File signal 2: autoint2.e  
 Quant Time: Mar 17 15:55:41 2021  
 Quant Method : Z:\pestpcbsrv\HPCHEM1\ECD\_0\methods\P0031521.M  
 Quant Title : GC EXTRACTABLES  
 QLast Update : Tue Mar 16 07:18:57 2021  
 Response via : Initial Calibration  
 Integrator: ChemStation 6890 Scale Mode: Small noise peaks clipped

Volume Inj. : 2 µl  
 Signal #1 Phase : ZB-MR1 Signal #2 Phase: ZB-MR2  
 Signal #1 Info : 30Mx0.32mmx 0.50µ Signal #2 Info : 30M x 0.32mm x 0.25µm

Compound	RT#1	RT#2	Resp#1	Resp#2	ng/ml	ng/ml
-----						
System Monitoring Compounds						
1) SA Tetrachlo...	4.922	3.935	786169	646499	13.839	15.496
2) SA Decachlor...	10.920	9.200	910832	842322	23.680	21.937

Target Compounds

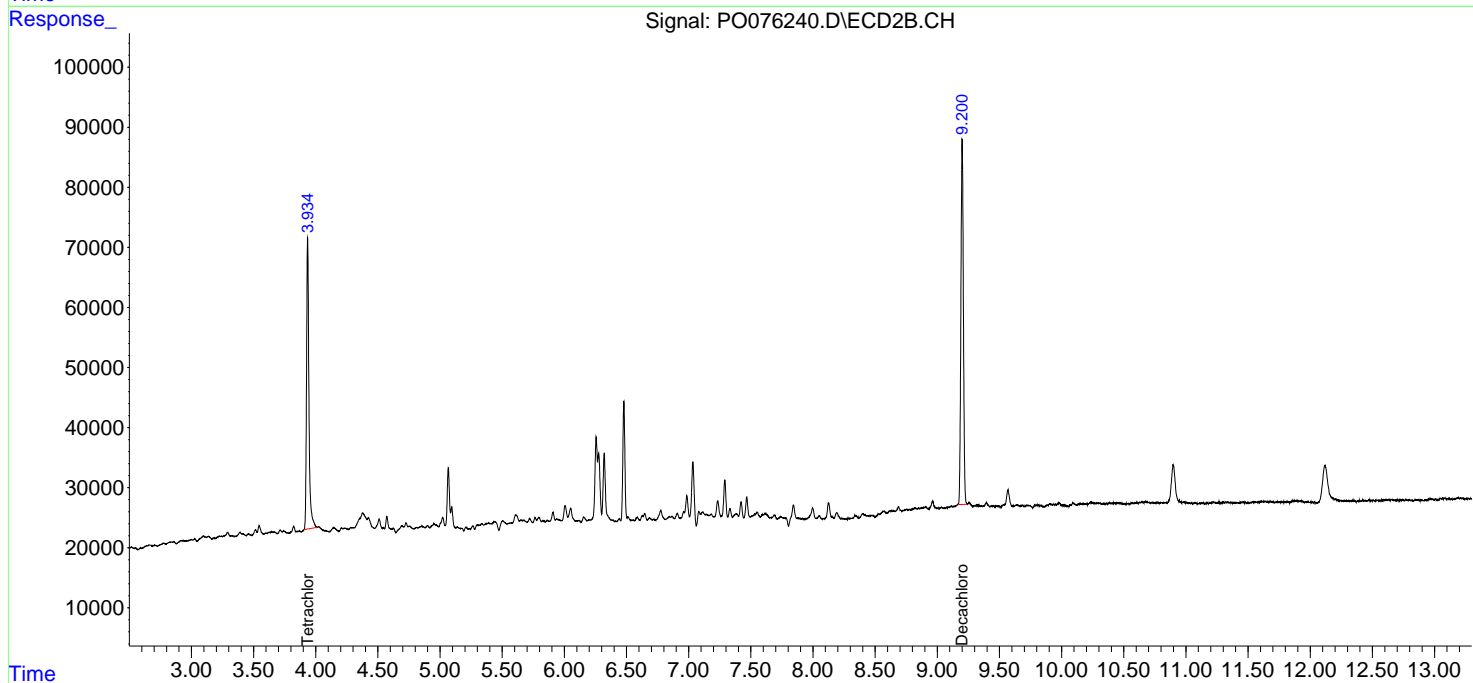
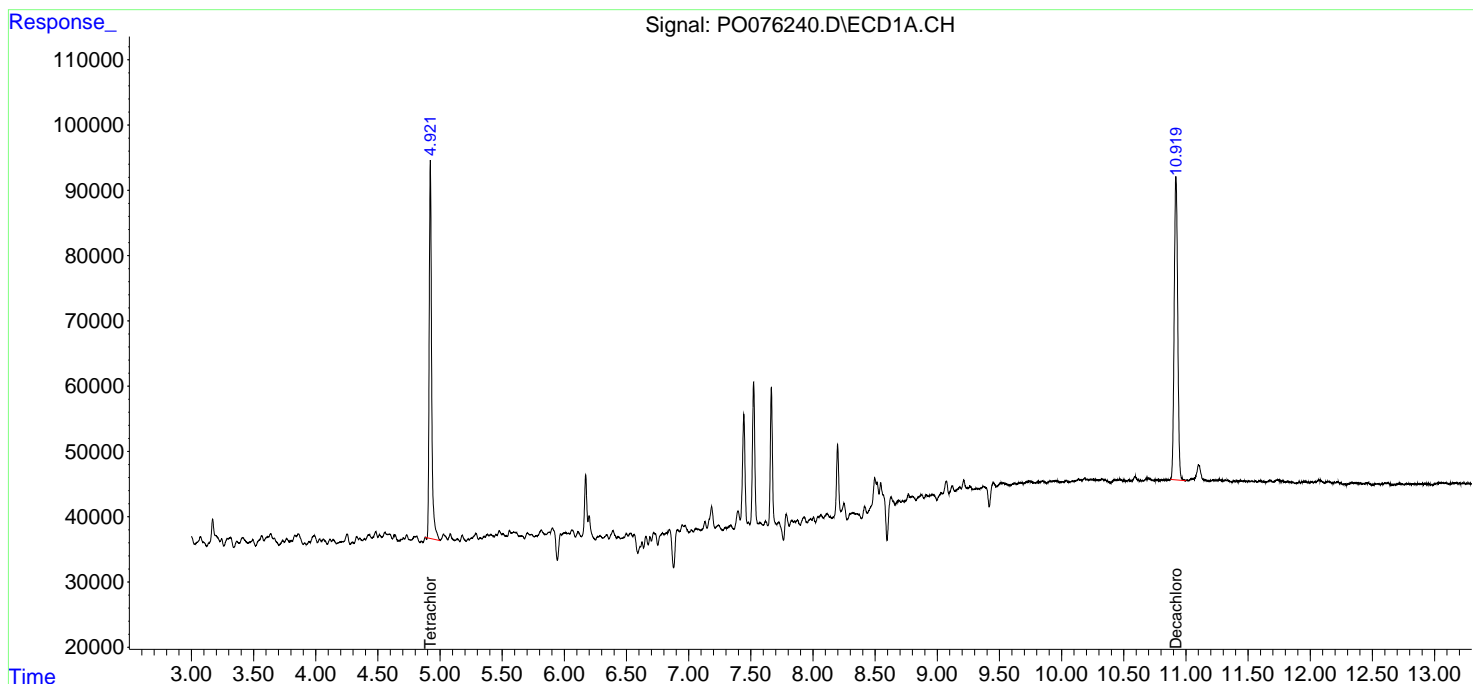
(f)=RT Delta > 1/2 Window (#)=Amounts differ by > 25% (m)=manual int.

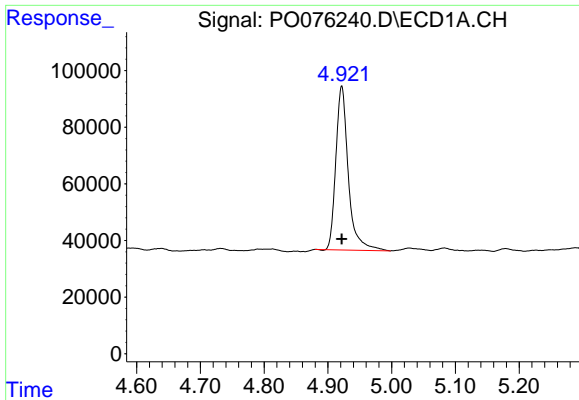
Data Path : Z:\pestpcbsrv\HPCHEM1\ECD\_0\Data\P0031721\  
 Data File : P0076240.D  
 Signal(s) : Signal #1: ECD1A.CH Signal #2: ECD2B.CH  
 Acq On : 17 Mar 2021 15:40  
 Operator : DD\AJ  
 Sample : M1687-01  
 Misc :  
 ALS Vial : 15 Sample Multiplier: 1

**Instrument :**  
 ECD\_O  
**ClientSampleID :**  
 AUD-1052-1053

Integration File signal 1: autoint1.e  
 Integration File signal 2: autoint2.e  
 Quant Time: Mar 17 15:55:41 2021  
 Quant Method : Z:\pestpcbsrv\HPCHEM1\ECD\_0\methods\P0031521.M  
 Quant Title : GC EXTRACTABLES  
 QLast Update : Tue Mar 16 07:18:57 2021  
 Response via : Initial Calibration  
 Integrator: ChemStation 6890 Scale Mode: Small noise peaks clipped

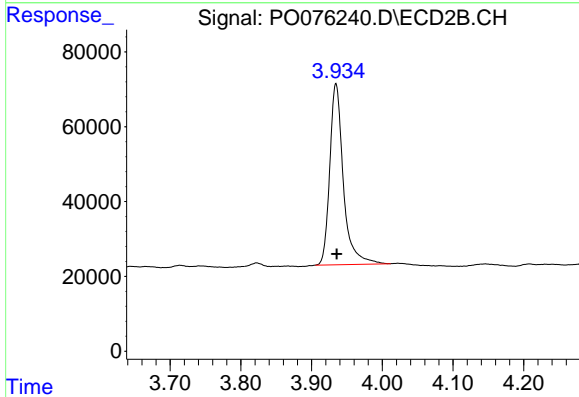
Volume Inj. : 2 µl  
 Signal #1 Phase : ZB-MR1 Signal #2 Phase: ZB-MR2  
 Signal #1 Info : 30Mx0.32mmx 0.50µ Signal #2 Info : 30M x 0.32mm x 0.25µm



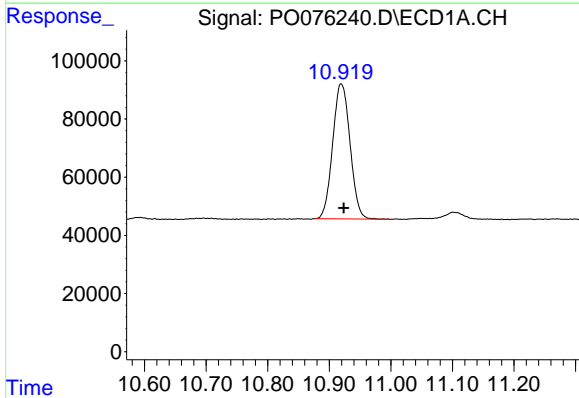


#1 Tetrachloro-m-xylene  
 R.T.: 4.922 min  
 Delta R.T.: 0.000 min  
 Response: 786169  
 Conc: 13.84 ng/ml

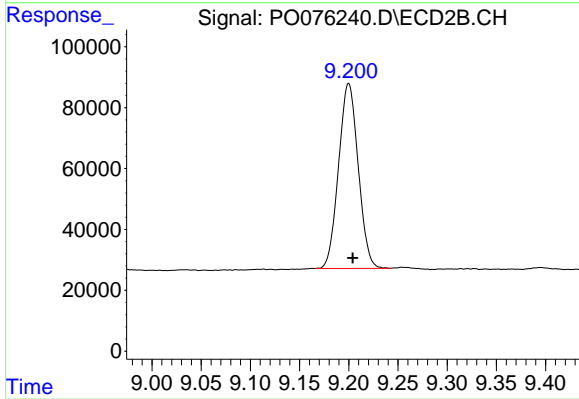
Instrument :  
 ECD\_O  
 ClientSampleId :  
 AUD-1052-1053



#1 Tetrachloro-m-xylene  
 R.T.: 3.935 min  
 Delta R.T.: 0.000 min  
 Response: 646499  
 Conc: 15.50 ng/ml



#2 Decachlorobiphenyl  
 R.T.: 10.920 min  
 Delta R.T.: -0.004 min  
 Response: 910832  
 Conc: 23.68 ng/ml



#2 Decachlorobiphenyl  
 R.T.: 9.200 min  
 Delta R.T.: -0.004 min  
 Response: 842322  
 Conc: 21.94 ng/ml