

Data Path : Z:\pestpcbsrv\HPCHEM1\ECD_0\Data\P0031725\
 Data File : P0109956.D
 Signal(s) : Signal #1: ECD1A.ch Signal #2: ECD2B.ch
 Acq On : 18 Mar 2025 01:10
 Operator : YP/AJ
 Sample : Q1589-10 10X
 Misc :
 ALS Vial : 25 Sample Multiplier: 1

Instrument :
 ECD_0
ClientSampleId :
 H1H340T-1-2

Manual Integrations
APPROVED
 Reviewed By :Yogesh Patel 03/18/2025
 Supervised By :mohammad ahmed 03/19/2025

Integration File signal 1: autoint1.e
 Integration File signal 2: autoint2.e
 Quant Time: Mar 18 05:39:50 2025
 Quant Method : Z:\pestpcbsrv\HPCHEM1\ECD_0\methods\P0022025.M
 Quant Title : GC EXTRACTABLES
 QLast Update : Fri Feb 21 04:40:23 2025
 Response via : Initial Calibration
 Integrator: ChemStation

Volume Inj. : 2 µl
 Signal #1 Phase : ZB-MR1 Signal #2 Phase: ZB-MR2
 Signal #1 Info : 30Mx0.32mmx 0.50µ Signal #2 Info : 30M x 0.32mm x 0.25µm

Compound	RT#1	RT#2	Resp#1	Resp#2	ng/ml	ng/ml

System Monitoring Compounds						
1) SA Tetrachlo...	3.693	3.690	13332664	7090097	1.409	1.355m
2) SA Decachlor...	8.745	8.696	10040663	3226443	1.167	1.013
Target Compounds						
26) L6 AR-1254-1	5.595	5.574	81690620	52182079	158.436	199.520 #
27) L6 AR-1254-2	5.743	5.721	79800957	47405561	177.188	202.103
28) L6 AR-1254-3	6.149	6.124	112.0E6	63917372	156.447	179.189
29) L6 AR-1254-4	6.379	6.352	61549627	33968154	146.970	175.888
30) L6 AR-1254-5	6.798	6.769	77987526	45446479	124.999	153.157

(f)=RT Delta > 1/2 Window (#)=Amounts differ by > 25% (m)=manual int.

Data Path : Z:\pestpcbsrv\HPCHEM1\ECD_O\Data\PO031725\
 Data File : PO109956.D
 Signal(s) : Signal #1: ECD1A.ch Signal #2: ECD2B.ch
 Acq On : 18 Mar 2025 01:10
 Operator : YP/AJ
 Sample : Q1589-10 10X
 Misc :
 ALS Vial : 25 Sample Multiplier: 1

Instrument :

ECD_O

ClientSampleId :

HH340T-1-2

Manual Integrations

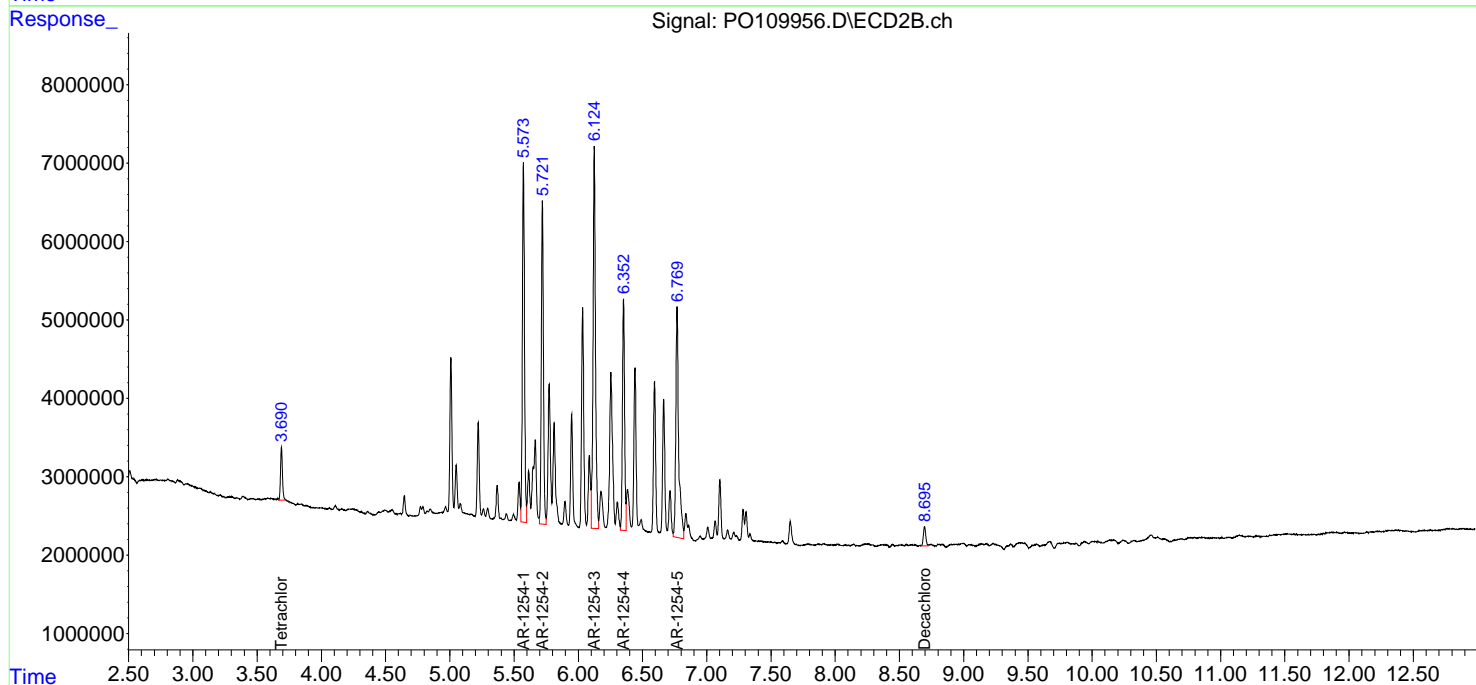
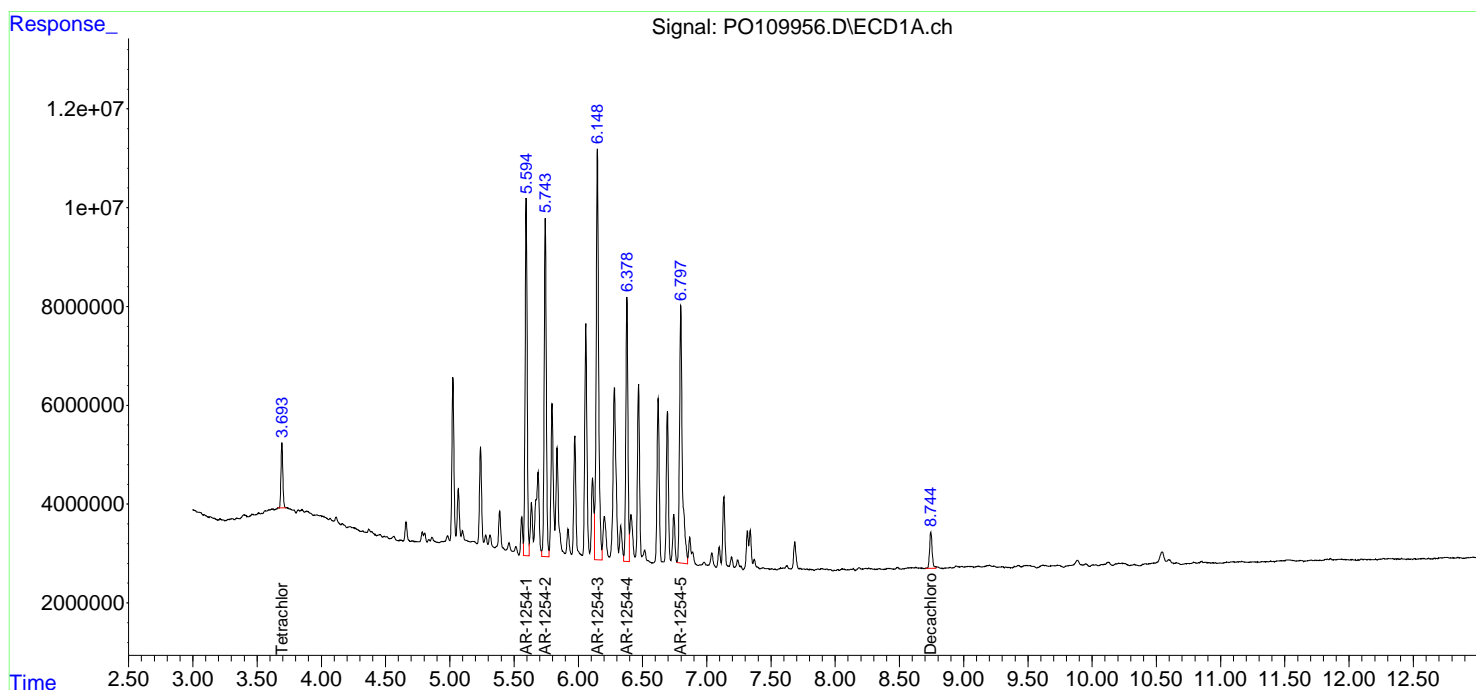
APPROVED

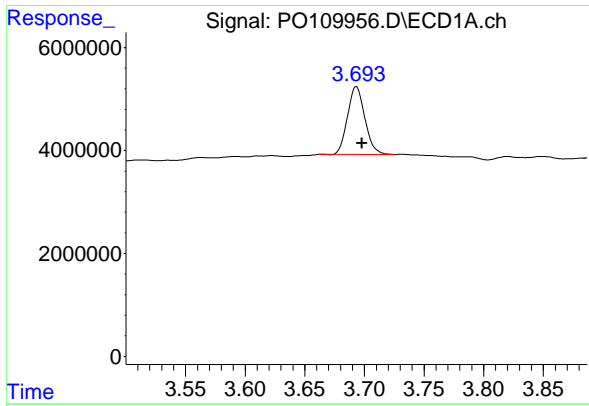
Reviewed By :Yogesh Patel 03/18/2025

Supervised By :mohammad ahmed 03/19/2025

Integration File signal 1: autoint1.e
 Integration File signal 2: autoint2.e
 Quant Time: Mar 18 05:39:50 2025
 Quant Method : Z:\pestpcbsrv\HPCHEM1\ECD_O\methods\PO022025.M
 Quant Title : GC EXTRACTABLES
 QLast Update : Fri Feb 21 04:40:23 2025
 Response via : Initial Calibration
 Integrator: ChemStation

Volume Inj. : 2 µl
 Signal #1 Phase : ZB-MR1 Signal #2 Phase: ZB-MR2
 Signal #1 Info : 30Mx0.32mmx 0.50µm Signal #2 Info : 30M x 0.32mm x 0.25µm





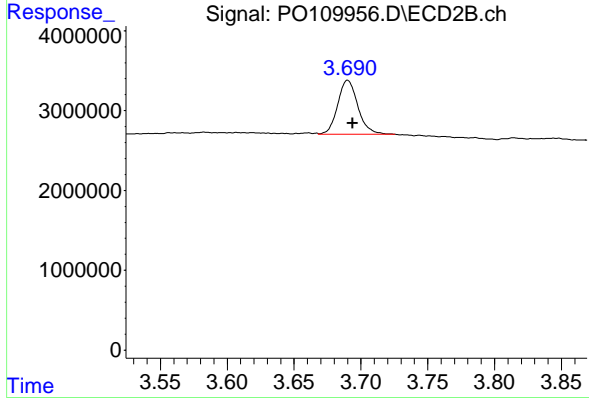
#1 Tetrachloro-m-xylene

R.T.: 3.693 min
 Delta R.T.: -0.005 min
 Response: 13332664
 Conc: 1.41 ng/ml

Instrument :
 ECD_O
 ClientSampleId :
 H1H340T-1-2

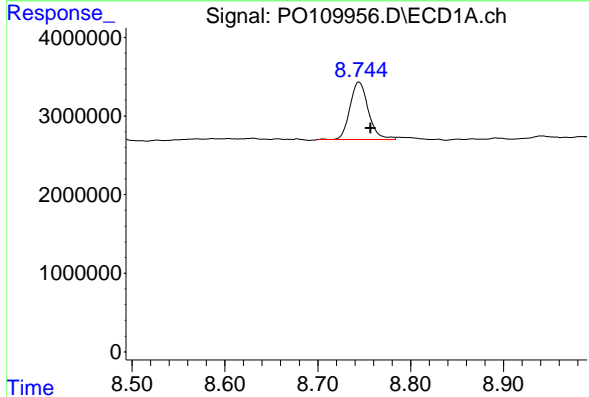
Manual Integrations
 APPROVED

Reviewed By :Yogesh Patel 03/18/2025
 Supervised By :mohammad ahmed 03/19/2025



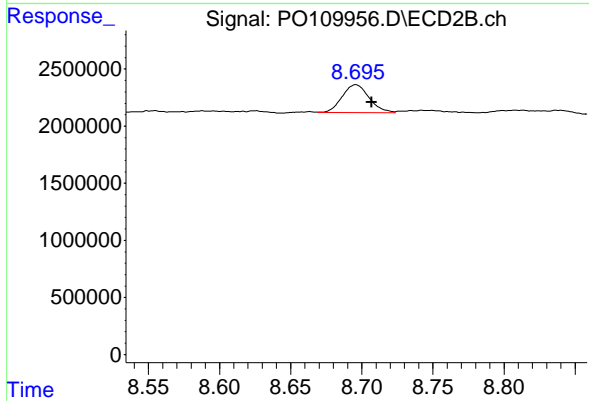
#1 Tetrachloro-m-xylene

R.T.: 3.690 min
 Delta R.T.: -0.004 min
 Response: 7090097
 Conc: 1.35 ng/ml m



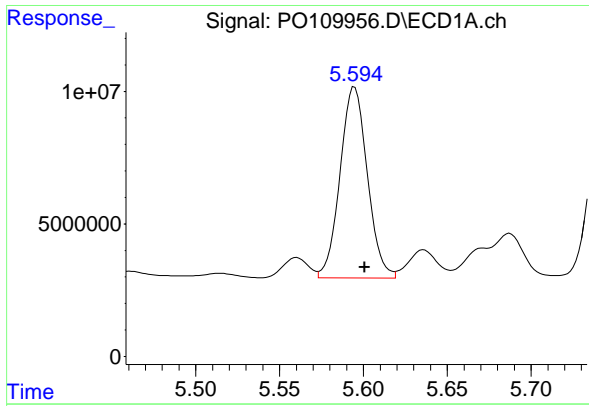
#2 Decachlorobiphenyl

R.T.: 8.745 min
 Delta R.T.: -0.012 min
 Response: 10040663
 Conc: 1.17 ng/ml



#2 Decachlorobiphenyl

R.T.: 8.696 min
 Delta R.T.: -0.011 min
 Response: 3226443
 Conc: 1.01 ng/ml



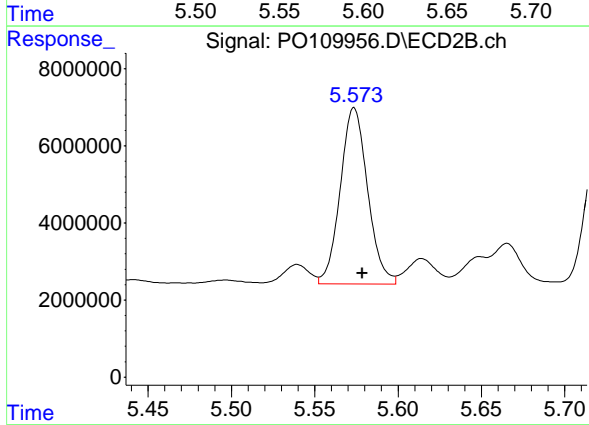
#26 AR-1254-1

R.T.: 5.595 min
 Delta R.T.: -0.006 min
 Response: 81690620
 Conc: 158.44 ng/ml

Instrument :
 ECD_O
 ClientSampleId :
 H1H340T-1-2

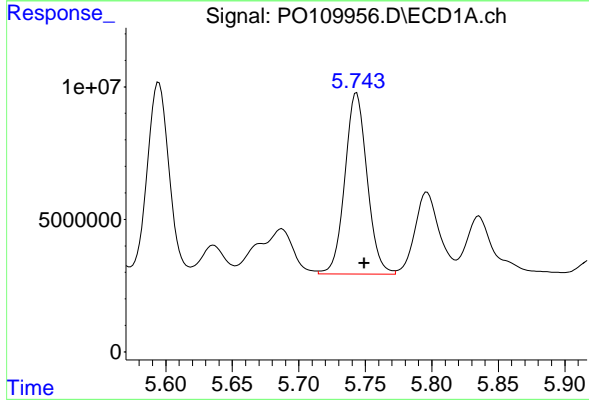
Manual Integrations
 APPROVED

Reviewed By :Yogesh Patel 03/18/2025
 Supervised By :mohammad ahmed 03/19/2025



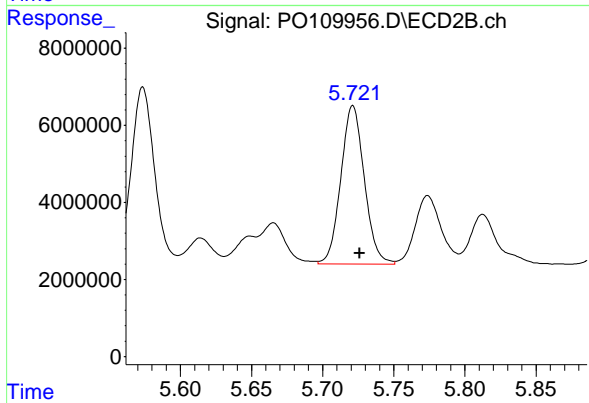
#26 AR-1254-1

R.T.: 5.574 min
 Delta R.T.: -0.005 min
 Response: 52182079
 Conc: 199.52 ng/ml



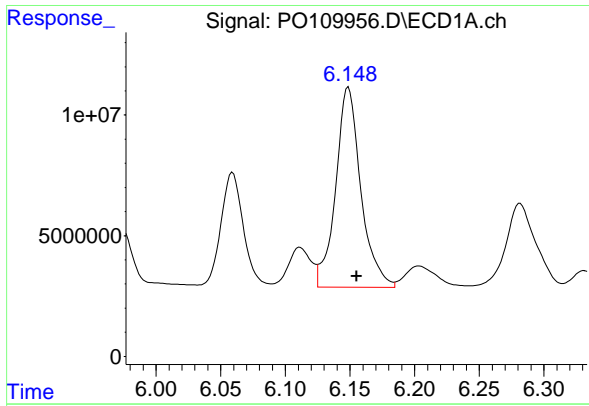
#27 AR-1254-2

R.T.: 5.743 min
 Delta R.T.: -0.006 min
 Response: 79800957
 Conc: 177.19 ng/ml



#27 AR-1254-2

R.T.: 5.721 min
 Delta R.T.: -0.005 min
 Response: 47405561
 Conc: 202.10 ng/ml



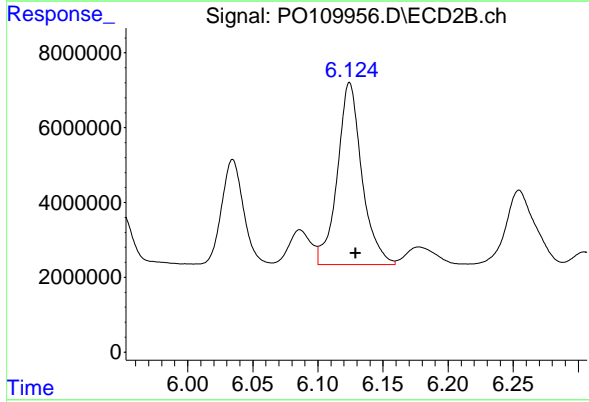
#28 AR-1254-3

R.T.: 6.149 min
 Delta R.T.: -0.006 min
 Response: 112009361
 Conc: 156.45 ng/ml

Instrument :
 ECD_O
 ClientSampleId :
 H1H340T-1-2

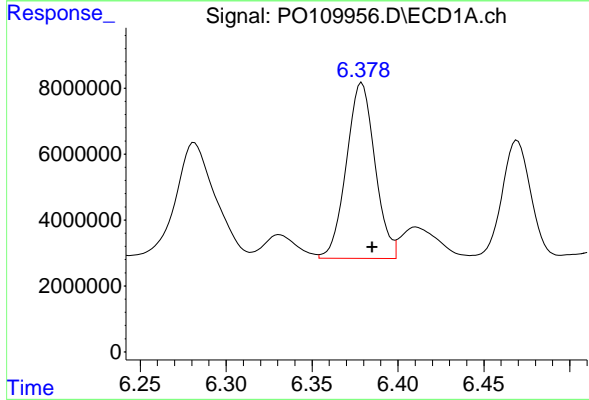
Manual Integrations
 APPROVED

Reviewed By :Yogesh Patel 03/18/2025
 Supervised By :mohammad ahmed 03/19/2025



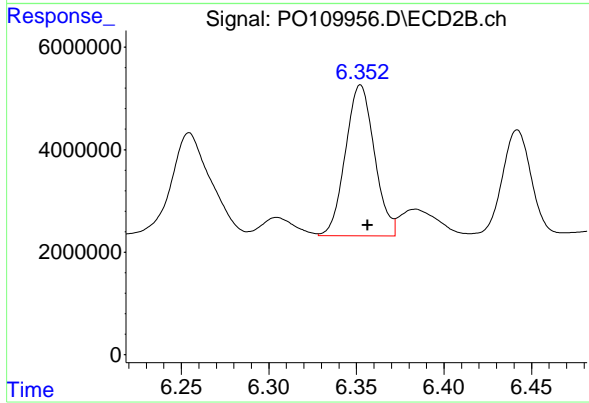
#28 AR-1254-3

R.T.: 6.124 min
 Delta R.T.: -0.005 min
 Response: 63917372
 Conc: 179.19 ng/ml



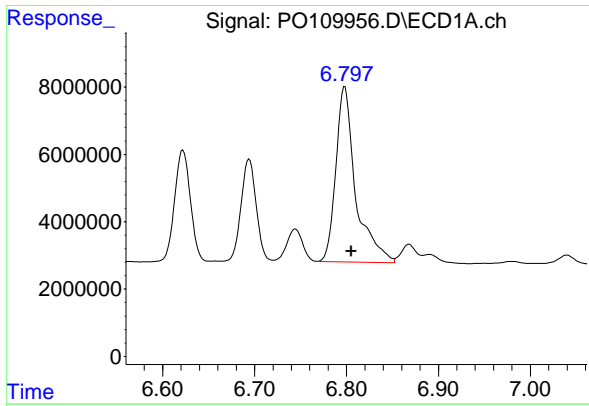
#29 AR-1254-4

R.T.: 6.379 min
 Delta R.T.: -0.006 min
 Response: 61549627
 Conc: 146.97 ng/ml



#29 AR-1254-4

R.T.: 6.352 min
 Delta R.T.: -0.004 min
 Response: 33968154
 Conc: 175.89 ng/ml



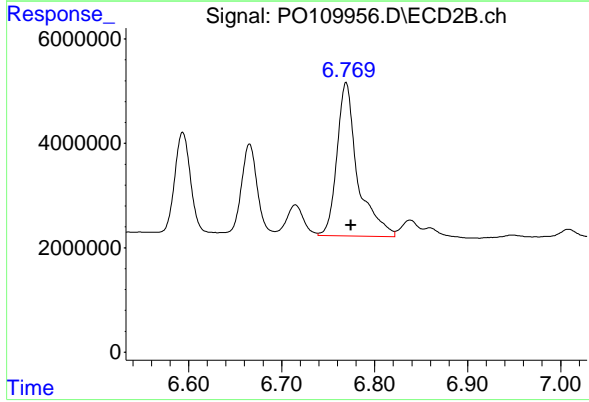
#30 AR-1254-5

R.T.: 6.798 min
 Delta R.T.: -0.007 min
 Response: 77987526
 Conc: 125.00 ng/ml

Instrument :
 ECD_O
 ClientSampleId :
 H1H340T-1-2

Manual Integrations
 APPROVED

Reviewed By :Yogesh Patel 03/18/2025
 Supervised By :mohammad ahmed 03/19/2025



#30 AR-1254-5

R.T.: 6.769 min
 Delta R.T.: -0.005 min
 Response: 45446479
 Conc: 153.16 ng/ml