

Data Path : Z:\pestpcbsrv\HPCHEM1\ECD_0\Data\P0031821\
 Data File : P0076288.D
 Signal(s) : Signal #1: ECD1A.CH Signal #2: ECD2B.CH
 Acq On : 18 Mar 2021 12:42
 Operator : DD\AJ
 Sample : AR1254CCC500
 Misc :
 ALS Vial : 6 Sample Multiplier: 1

Instrument :
 ECD_0
 ClientSampleId :
 AR1254CCC500

Integration File signal 1: autoint1.e
 Integration File signal 2: autoint2.e
 Quant Time: Mar 18 16:59:34 2021
 Quant Method : Z:\pestpcbsrv\HPCHEM1\ECD_0\methods\P0031521.M
 Quant Title : GC EXTRACTABLES
 QLast Update : Tue Mar 16 07:18:57 2021
 Response via : Initial Calibration
 Integrator: ChemStation 6890 Scale Mode: Small noise peaks clipped

Volume Inj. : 2 µl
 Signal #1 Phase : ZB-MR1 Signal #2 Phase: ZB-MR2
 Signal #1 Info : 30Mx0.32mmx 0.50µ Signal #2 Info : 30M x 0.32mm x 0.25µm

Compound	RT#1	RT#2	Resp#1	Resp#2	ng/ml	ng/ml
System Monitoring Compounds						
1) SA Tetrachlo...	4.922	3.934	2958721	2104110	52.082	50.432
2) SA Decachlor...	10.925	9.200	2020155	1906405	52.521	49.649
Target Compounds						
3) L1 AR-1016-1	6.246	0.000	8408	0	5.103	N.D. #
4) L1 AR-1016-2	6.246f	0.000	8408	0	3.290	N.D. #
6) L1 AR-1016-4	0.000	5.442	0	470223	N.D.	479.400 #
7) L1 AR-1016-5	6.757	5.670	335584	287390	261.440	252.520
9) L2 AR-1221-2	5.275	4.284	35989	27040	87.867	82.798
13) L3 AR-1232-3	6.246f	0.000	8408	0	8.071	N.D. #
14) L3 AR-1232-4	0.000	5.486	0	125941	N.D.	300.792 #
15) L3 AR-1232-5	6.539	5.670	564834	287390	1516.508	652.753 #
16) L4 AR-1242-1	6.246	0.000	8408	0	6.658	N.D. #
17) L4 AR-1242-2	6.246f	0.000	8408	0	4.242	N.D. #
19) L4 AR-1242-4	0.000	5.486	0	125941	N.D.	145.088 #
20) L4 AR-1242-5	7.229	6.048	344013	1121304	342.411	1112.635 #
21) L5 AR-1248-1	6.246	0.000	8408	0	8.918	N.D. #
22) L5 AR-1248-2	6.539	5.442	564834	470223	374.958	363.427
23) L5 AR-1248-3	6.757	5.486	335584	125941	193.485	98.530 #
24) L5 AR-1248-4	7.188	5.670	474229	287390	269.550	195.442 #
25) L5 AR-1248-5	7.229	6.093	344013	139473	194.507	90.182 #
26) L6 AR-1254-1	7.156	6.048	1002142	1121304	488.993	490.614
27) L6 AR-1254-2	7.386	6.207	1563324	981917	503.072	495.780
28) L6 AR-1254-3	7.769	6.625	1592066	1515461	500.425	503.135
29) L6 AR-1254-4	8.066	6.866	1056705	903851	504.359	512.188
30) L6 AR-1254-5	8.495	7.292	1156371	1348602	503.498	515.113
31) L7 AR-1260-1	7.935	6.763	646936	777922	278.248	378.681 #
32) L7 AR-1260-2	8.201	6.959	679936	650760	266.293	268.328
33) L7 AR-1260-3	8.556	7.111	152697	628688	77.024	277.978 #
34) L7 AR-1260-4	8.791	7.594	424423	64930	187.868	33.695 #
35) L7 AR-1260-5	9.123	7.841	141551	134730	34.630	30.475
36) L8 AR-1262-1	8.556	7.292	152697	1348602	51.610	923.451 #
37) L8 AR-1262-2	9.123	7.841	141551	134730	29.240	27.198
38) L8 AR-1262-3	9.455f	0.000	105458	0	31.910	N.D. #
39) L8 AR-1262-4	0.000	8.188	0	156129	N.D.	41.279 #
41) L9 AR-1268-1	9.455f	0.000	105458	0	18.104	N.D. #
42) L9 AR-1268-2	0.000	8.188	0	156129	N.D.	29.313 #

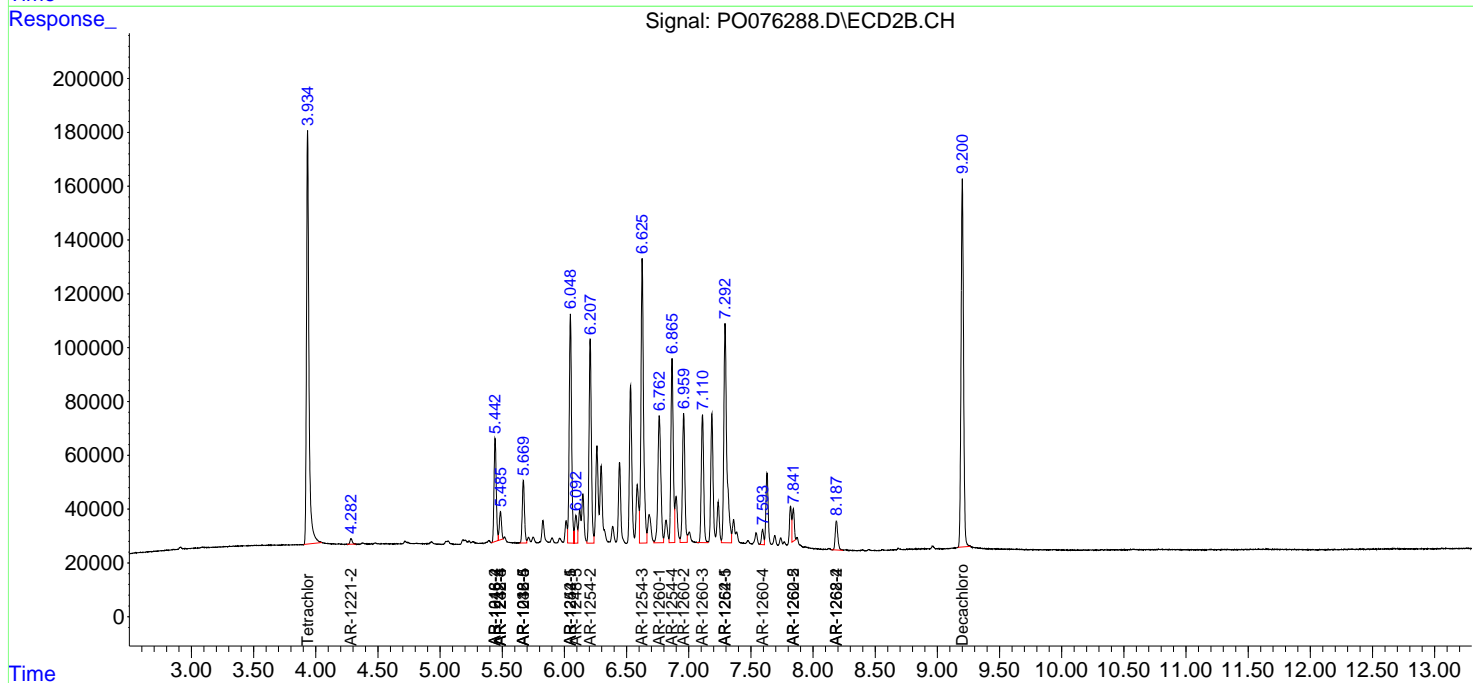
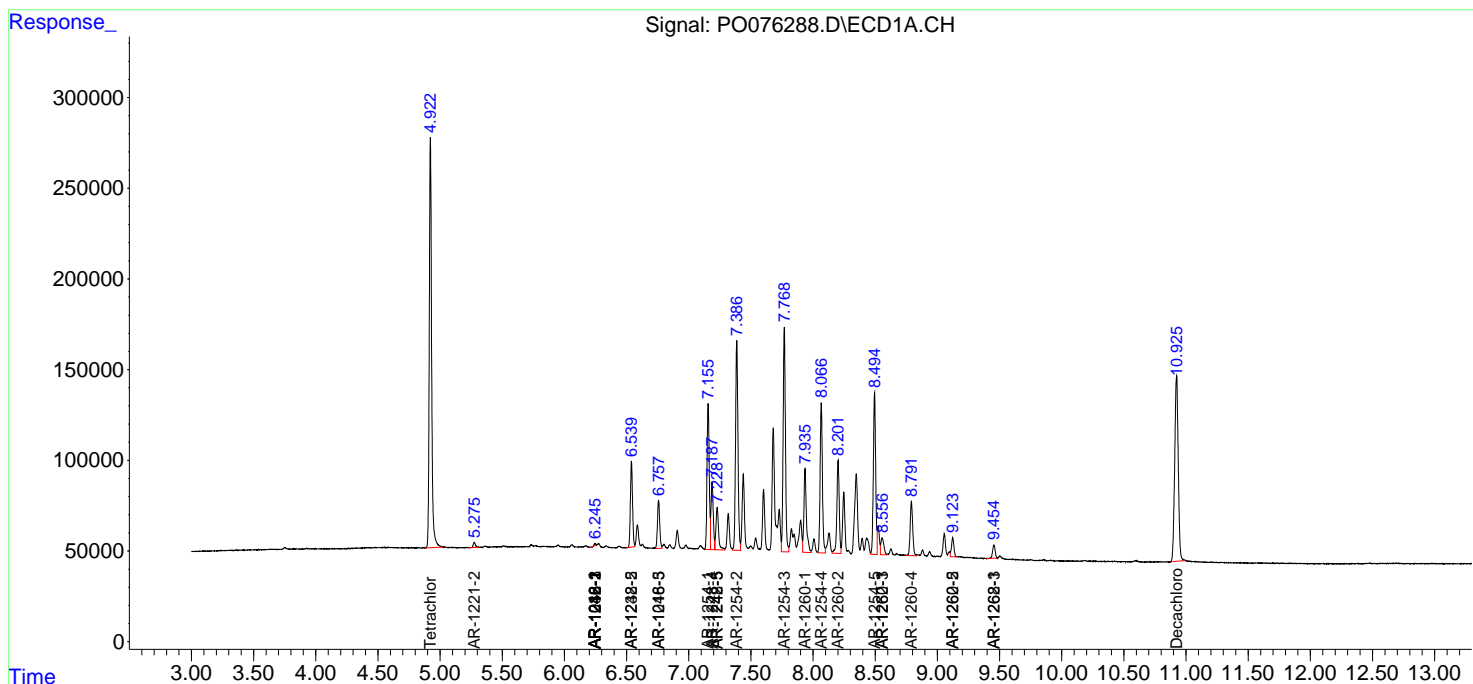
(f)=RT Delta > 1/2 Window (#)=Amounts differ by > 25% (m)=manual int.

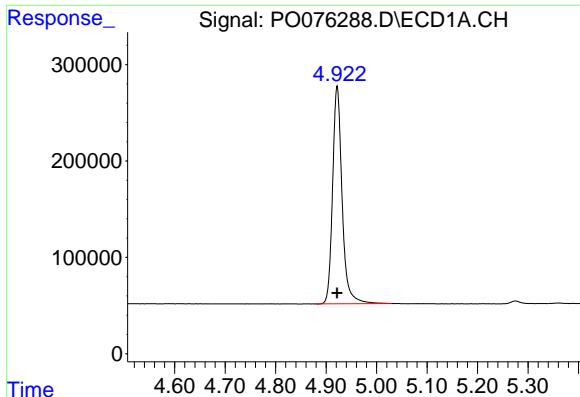
Data Path : Z:\pestpcbsrv\HPCHEM1\ECD_0\Data\PO031821\
Data File : PO076288.D
Signal(s) : Signal #1: ECD1A.CH Signal #2: ECD2B.CH
Acq On : 18 Mar 2021 12:42
Operator : DD\AJ
Sample : AR1254CCC500
Misc :
ALS Vial : 6 Sample Multiplier: 1

Instrument :
ECD_O
ClientSampled :
AR1254CCC500

Integration File signal 1: autoint1.e
Integration File signal 2: autoint2.e
Quant Time: Mar 18 16:59:34 2021
Quant Method : Z:\pestpcbsrv\HPCHEM1\ECD_0\methods\PO031521.M
Quant Title : GC EXTRACTABLES
QLast Update : Tue Mar 16 07:18:57 2021
Response via : Initial Calibration
Integrator: ChemStation 6890 Scale Mode: Small noise peaks clipped

Volume Inj. : 2 µl
Signal #1 Phase : ZB-MR1 Signal #2 Phase: ZB-MR2
Signal #1 Info : 30Mx0.32mmx 0.50µ Signal #2 Info : 30M x 0.32mm x 0.25µm

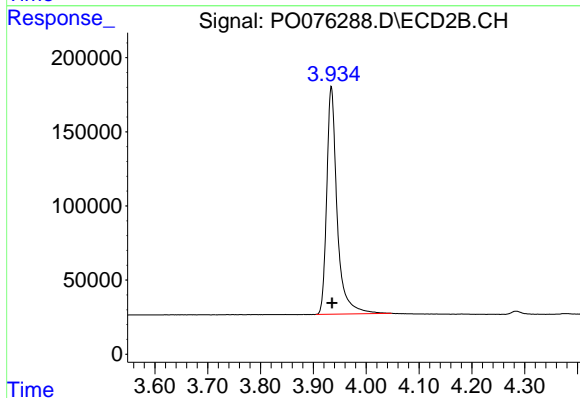




#1 Tetrachloro-m-xylene

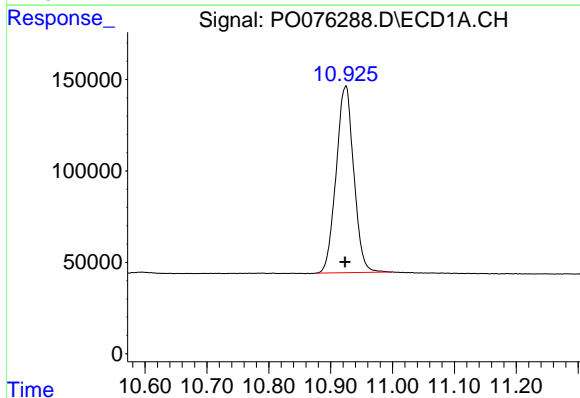
R.T.: 4.922 min
 Delta R.T.: 0.000 min
 Response: 2958721
 Conc: 52.08 ng/ml

Instrument :
 ECD_O
 ClientSampleId :
 AR1254CCC500



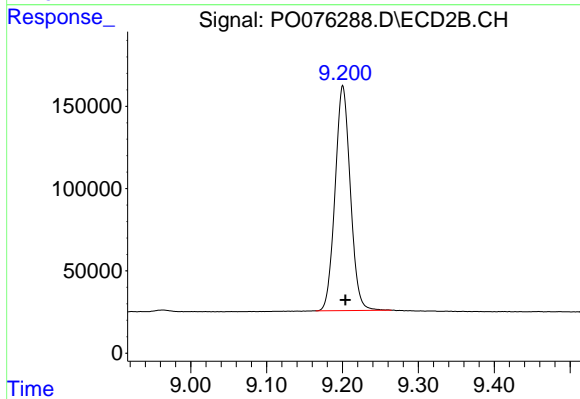
#1 Tetrachloro-m-xylene

R.T.: 3.934 min
 Delta R.T.: -0.001 min
 Response: 2104110
 Conc: 50.43 ng/ml



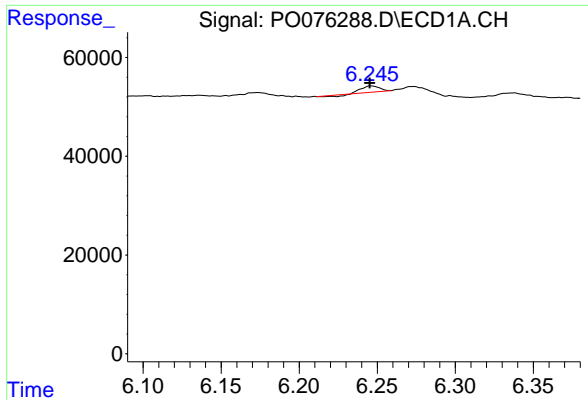
#2 Decachlorobiphenyl

R.T.: 10.925 min
 Delta R.T.: 0.000 min
 Response: 2020155
 Conc: 52.52 ng/ml



#2 Decachlorobiphenyl

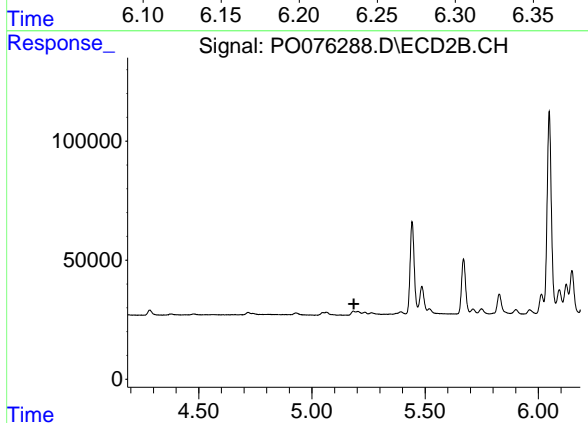
R.T.: 9.200 min
 Delta R.T.: -0.004 min
 Response: 1906405
 Conc: 49.65 ng/ml



#3 AR-1016-1

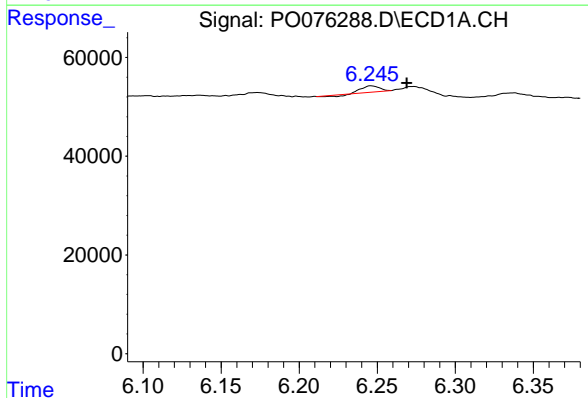
R.T.: 6.246 min
 Delta R.T.: 0.000 min
 Response: 8408
 Conc: 5.10 ng/ml

Instrument :
 ECD_O
 ClientSampled :
 AR1254CCC500



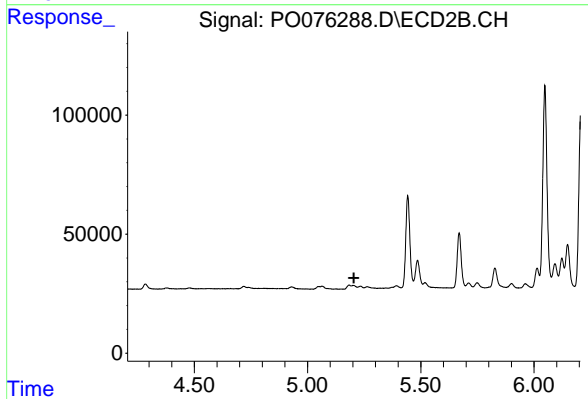
#3 AR-1016-1

R.T.: 0.000 min
 Exp R.T. : 5.185 min
 Response: 0
 Conc: N.D.



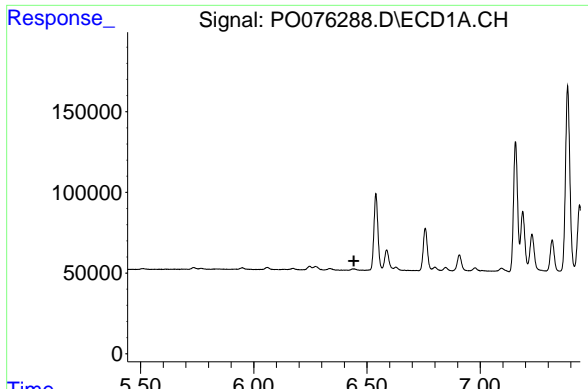
#4 AR-1016-2

R.T.: 6.246 min
 Delta R.T.: -0.023 min
 Response: 8408
 Conc: 3.29 ng/ml



#4 AR-1016-2

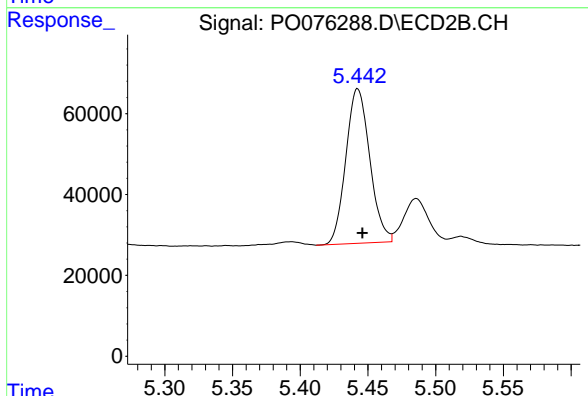
R.T.: 0.000 min
 Exp R.T. : 5.205 min
 Response: 0
 Conc: N.D.



#6 AR-1016-4

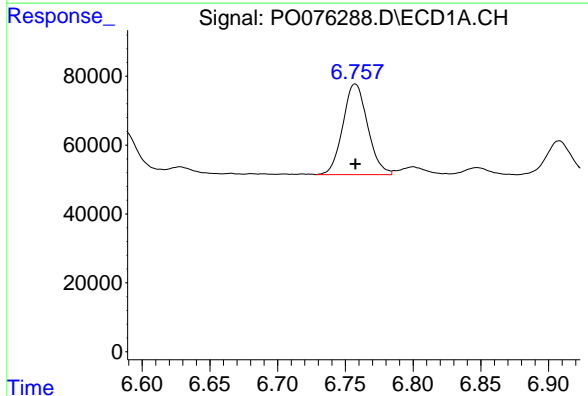
R.T.: 0.000 min
 Exp R.T.: 6.442 min
 Response: 0
 Conc: N.D.

Instrument :
 ECD_O
 ClientSampled :
 AR1254CCC500



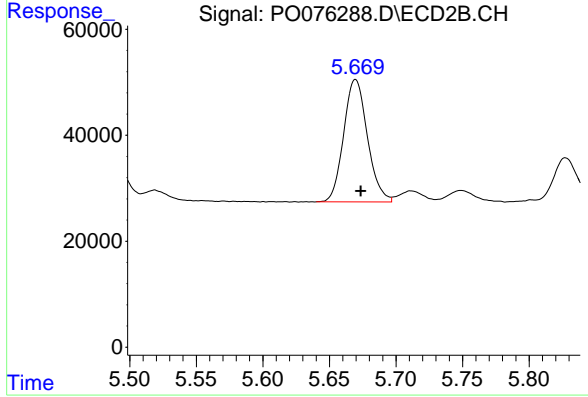
#6 AR-1016-4

R.T.: 5.442 min
 Delta R.T.: -0.003 min
 Response: 470223
 Conc: 479.40 ng/ml



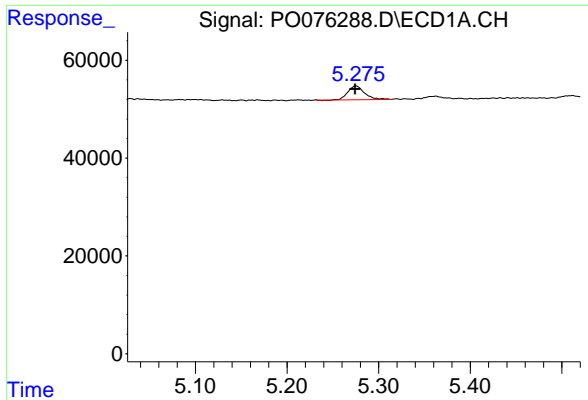
#7 AR-1016-5

R.T.: 6.757 min
 Delta R.T.: 0.000 min
 Response: 335584
 Conc: 261.44 ng/ml



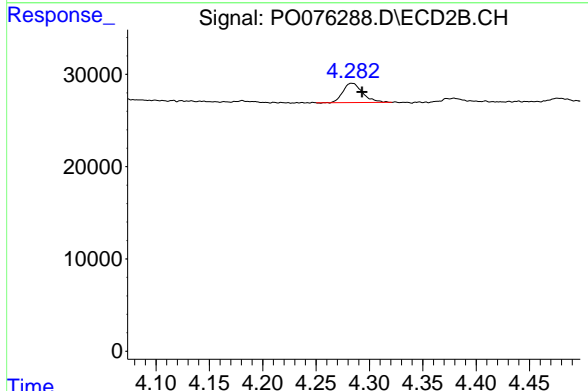
#7 AR-1016-5

R.T.: 5.670 min
 Delta R.T.: -0.004 min
 Response: 287390
 Conc: 252.52 ng/ml

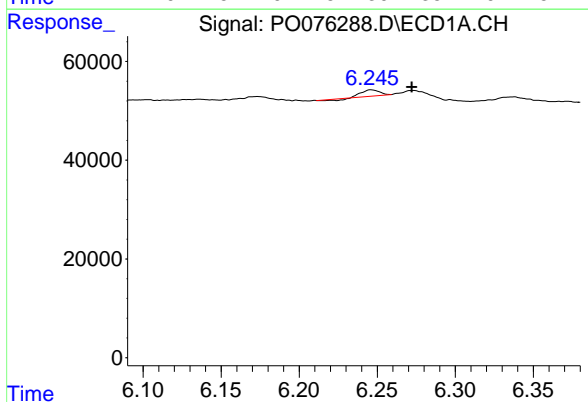


#9 AR-1221-2
 R.T.: 5.275 min
 Delta R.T.: 0.001 min
 Response: 35989
 Conc: 87.87 ng/ml

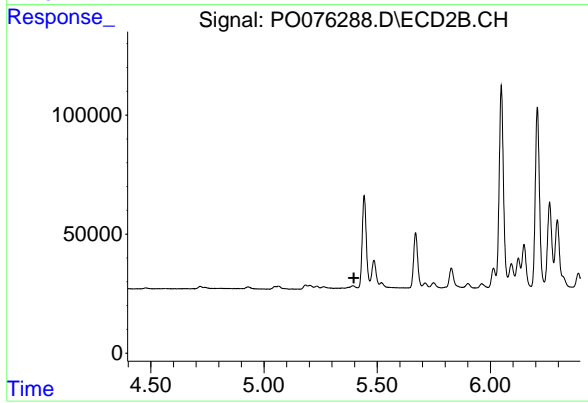
Instrument :
 ECD_O
ClientSampleId :
 AR1254CCC500



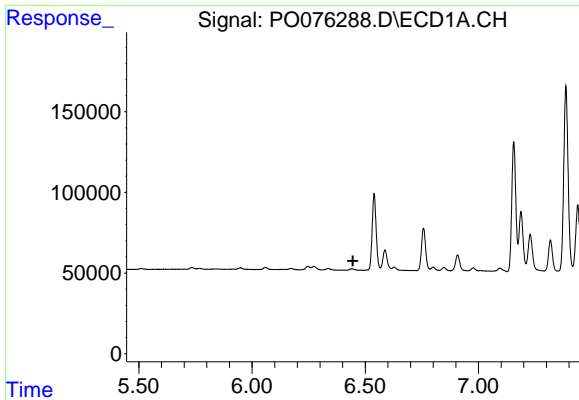
#9 AR-1221-2
 R.T.: 4.284 min
 Delta R.T.: -0.009 min
 Response: 27040
 Conc: 82.80 ng/ml



#13 AR-1232-3
 R.T.: 6.246 min
 Delta R.T.: -0.026 min
 Response: 8408
 Conc: 8.07 ng/ml



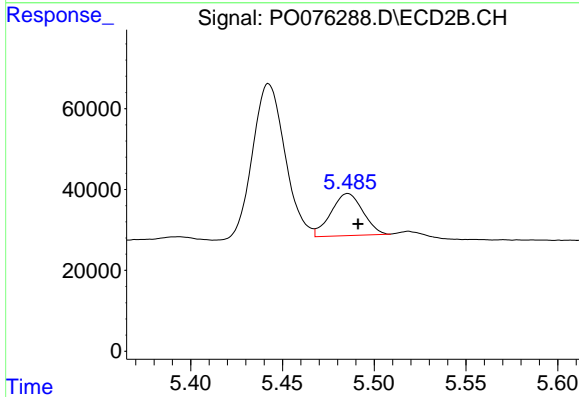
#13 AR-1232-3
 R.T.: 0.000 min
 Exp R.T. : 5.397 min
 Response: 0
 Conc: N.D.



#14 AR-1232-4

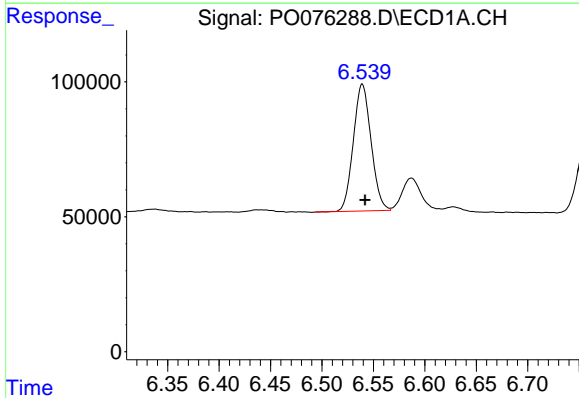
R.T.: 0.000 min
 Exp R.T.: 6.446 min
 Response: 0
 Conc: N.D.

Instrument :
 ECD_O
ClientSampled :
 AR1254CCC500



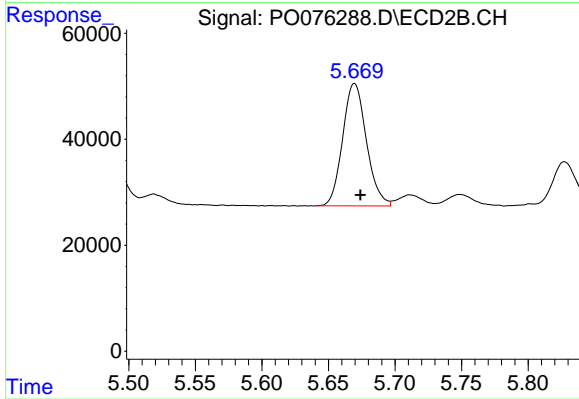
#14 AR-1232-4

R.T.: 5.486 min
 Delta R.T.: -0.006 min
 Response: 125941
 Conc: 300.79 ng/ml



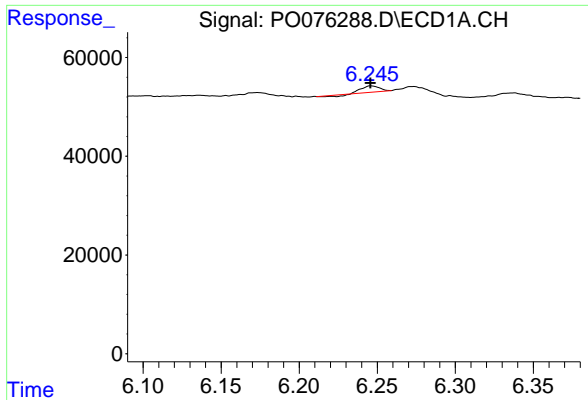
#15 AR-1232-5

R.T.: 6.539 min
 Delta R.T.: -0.003 min
 Response: 564834
 Conc: 1516.51 ng/ml



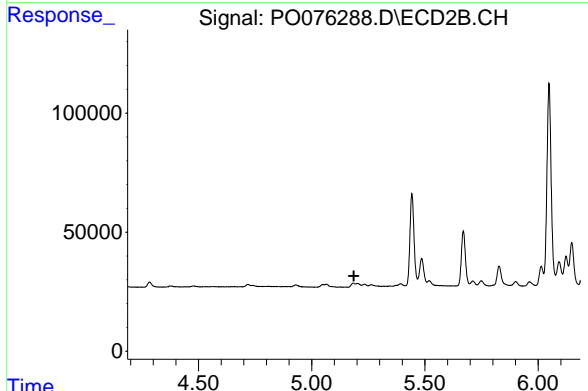
#15 AR-1232-5

R.T.: 5.670 min
 Delta R.T.: -0.005 min
 Response: 287390
 Conc: 652.75 ng/ml

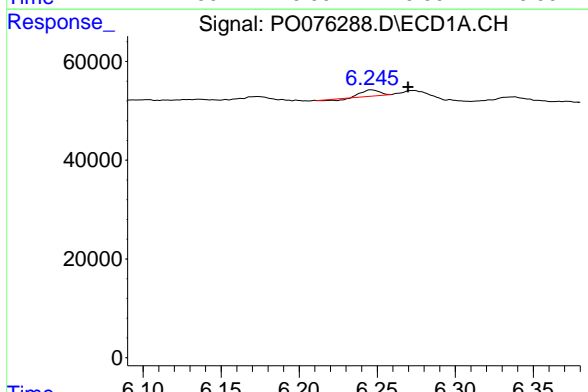


#16 AR-1242-1
 R.T.: 6.246 min
 Delta R.T.: 0.000 min
 Response: 8408
 Conc: 6.66 ng/ml

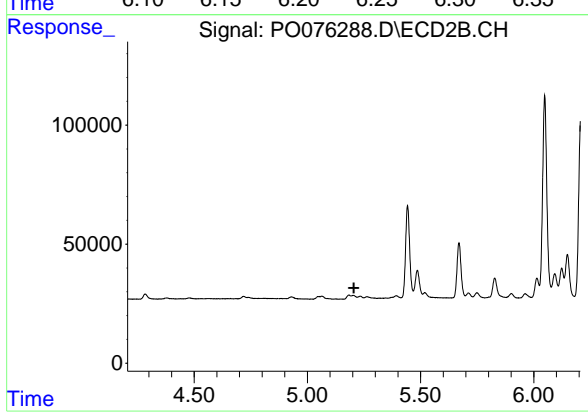
Instrument :
 ECD_O
 ClientSampleId :
 AR1254CCC500



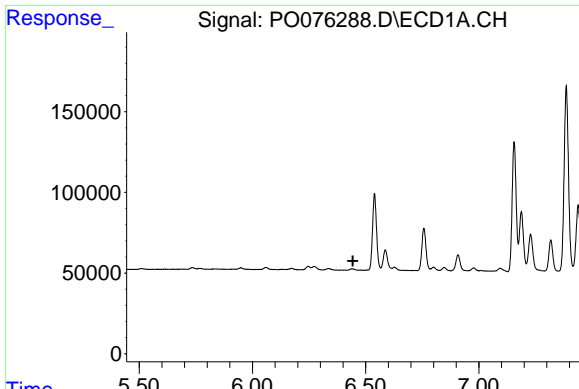
#16 AR-1242-1
 R.T.: 0.000 min
 Exp R.T. : 5.186 min
 Response: 0
 Conc: N.D.



#17 AR-1242-2
 R.T.: 6.246 min
 Delta R.T.: -0.024 min
 Response: 8408
 Conc: 4.24 ng/ml



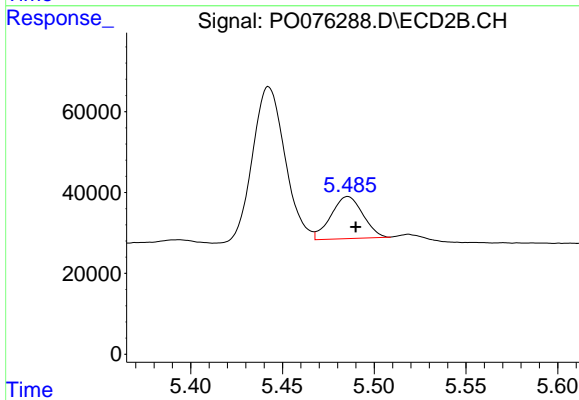
#17 AR-1242-2
 R.T.: 0.000 min
 Exp R.T. : 5.205 min
 Response: 0
 Conc: N.D.



#19 AR-1242-4

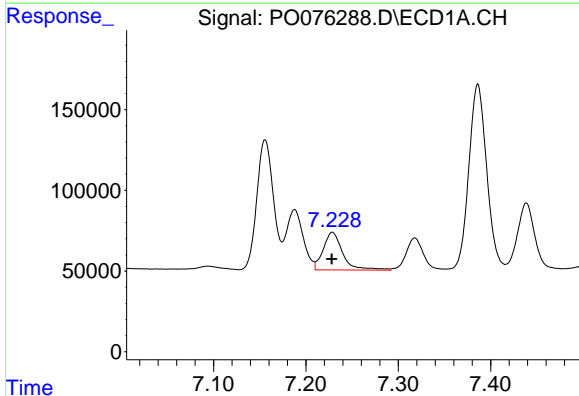
R.T.: 0.000 min
 Exp R.T.: 6.444 min
 Response: 0
 Conc: N.D.

Instrument :
 ECD_O
 ClientSampleId :
 AR1254CCC500



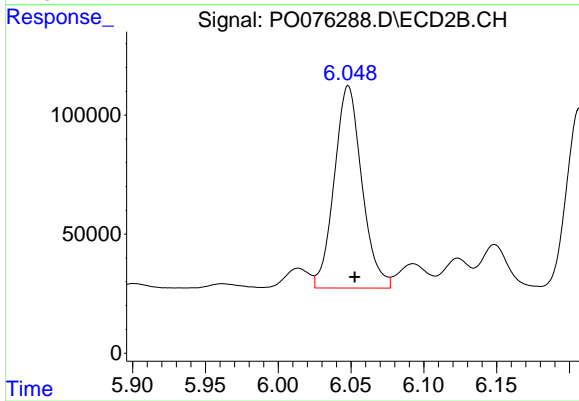
#19 AR-1242-4

R.T.: 5.486 min
 Delta R.T.: -0.004 min
 Response: 125941
 Conc: 145.09 ng/ml



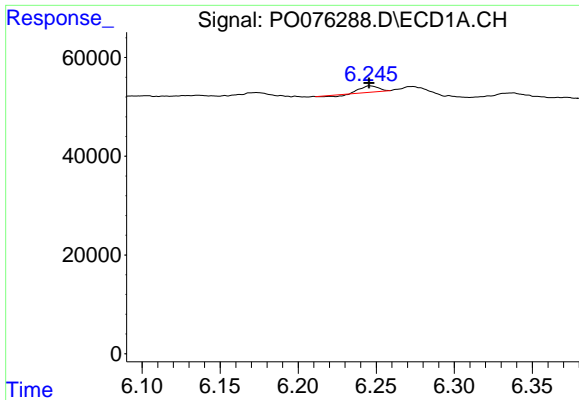
#20 AR-1242-5

R.T.: 7.229 min
 Delta R.T.: 0.000 min
 Response: 344013
 Conc: 342.41 ng/ml



#20 AR-1242-5

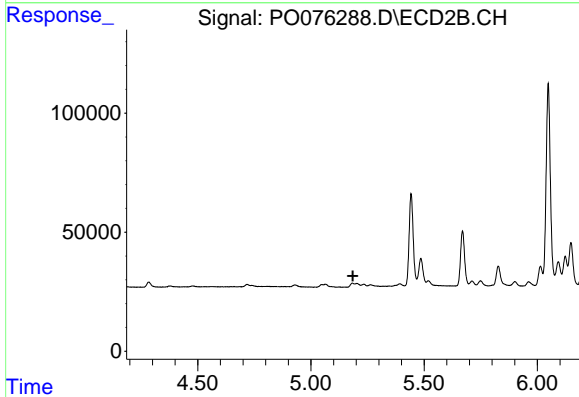
R.T.: 6.048 min
 Delta R.T.: -0.005 min
 Response: 1121304
 Conc: 1112.63 ng/ml



#21 AR-1248-1

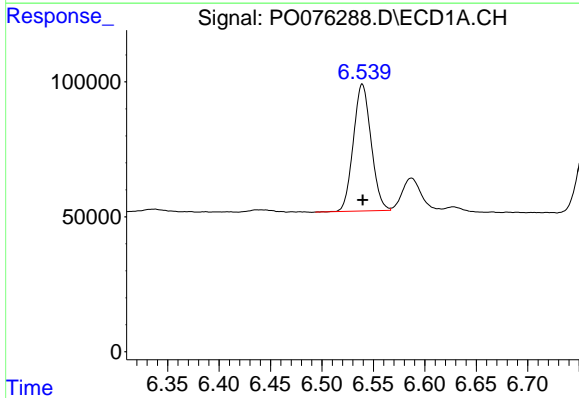
R.T.: 6.246 min
 Delta R.T.: 0.000 min
 Response: 8408
 Conc: 8.92 ng/ml

Instrument :
 ECD_O
 ClientSampleId :
 AR1254CCC500



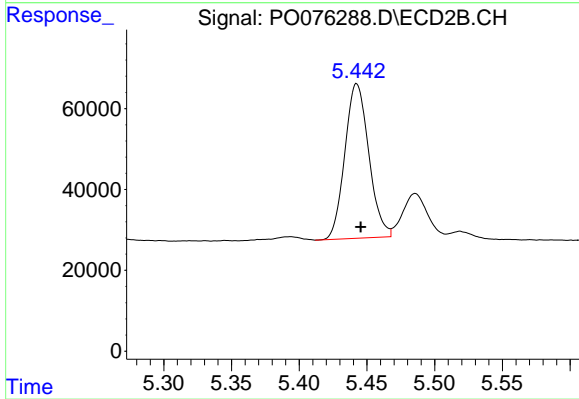
#21 AR-1248-1

R.T.: 0.000 min
 Exp R.T. : 5.186 min
 Response: 0
 Conc: N.D.



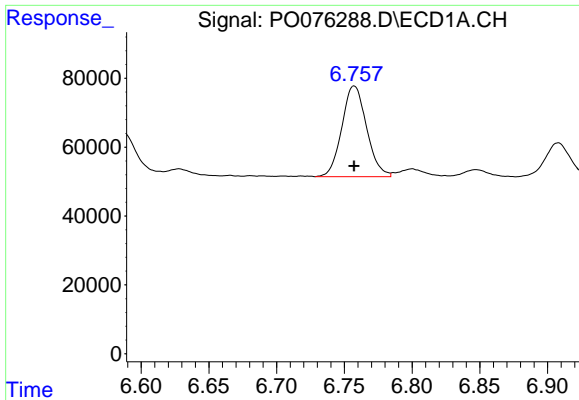
#22 AR-1248-2

R.T.: 6.539 min
 Delta R.T.: 0.000 min
 Response: 564834
 Conc: 374.96 ng/ml



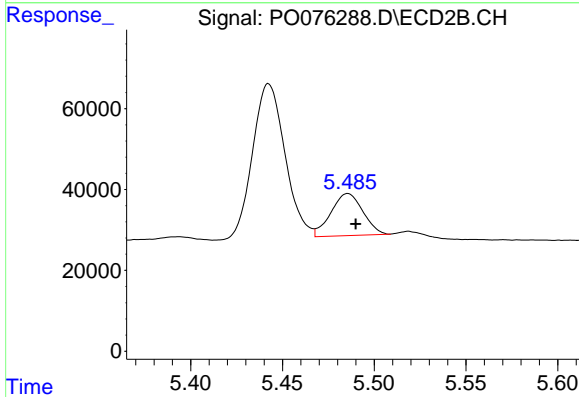
#22 AR-1248-2

R.T.: 5.442 min
 Delta R.T.: -0.003 min
 Response: 470223
 Conc: 363.43 ng/ml

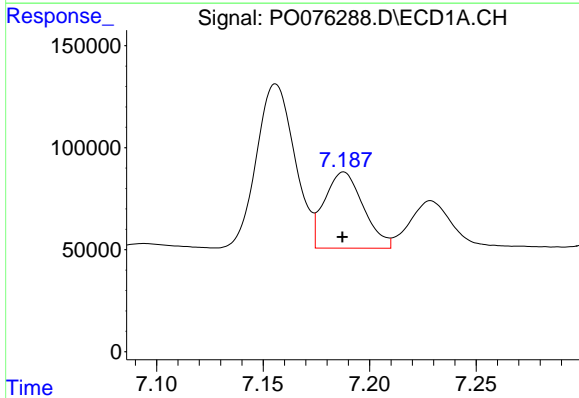


#23 AR-1248-3
 R.T.: 6.757 min
 Delta R.T.: 0.000 min
 Response: 335584
 Conc: 193.49 ng/ml

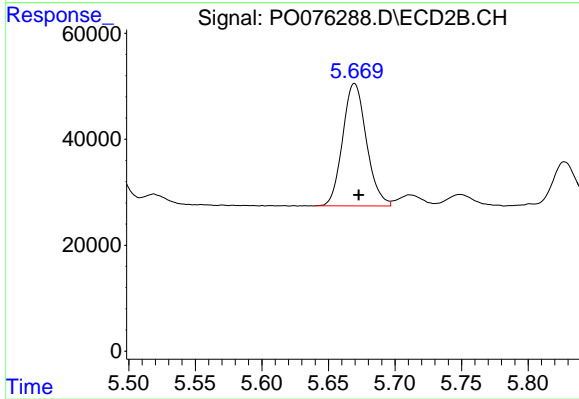
Instrument :
 ECD_O
 ClientSampleId :
 AR1254CCC500



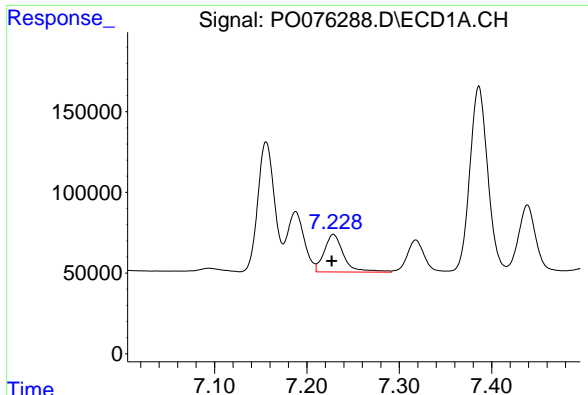
#23 AR-1248-3
 R.T.: 5.486 min
 Delta R.T.: -0.004 min
 Response: 125941
 Conc: 98.53 ng/ml



#24 AR-1248-4
 R.T.: 7.188 min
 Delta R.T.: 0.000 min
 Response: 474229
 Conc: 269.55 ng/ml

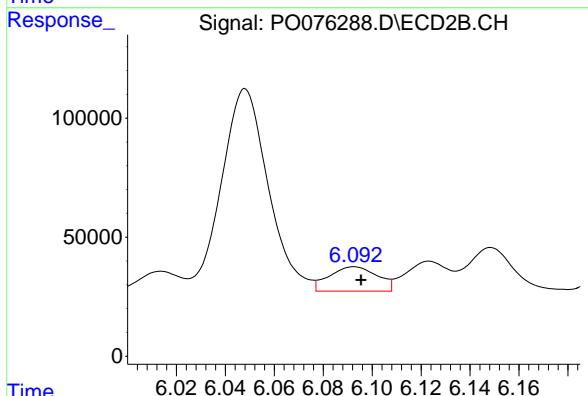


#24 AR-1248-4
 R.T.: 5.670 min
 Delta R.T.: -0.003 min
 Response: 287390
 Conc: 195.44 ng/ml

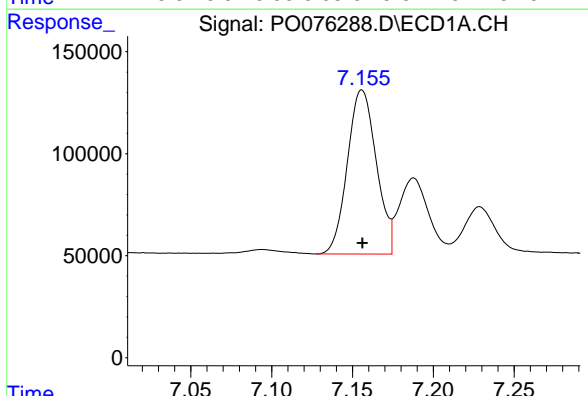


#25 AR-1248-5
 R.T.: 7.229 min
 Delta R.T.: 0.002 min
 Response: 344013
 Conc: 194.51 ng/ml

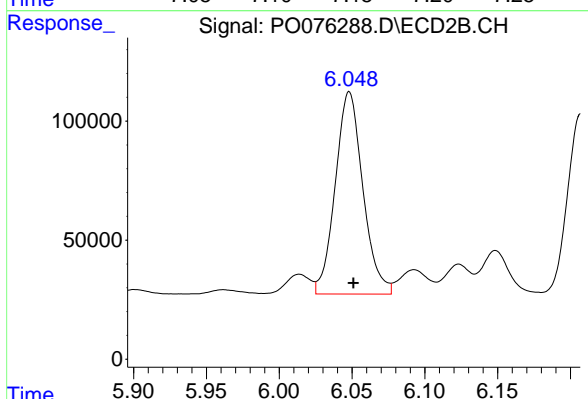
Instrument :
 ECD_O
 ClientSampleId :
 AR1254CCC500



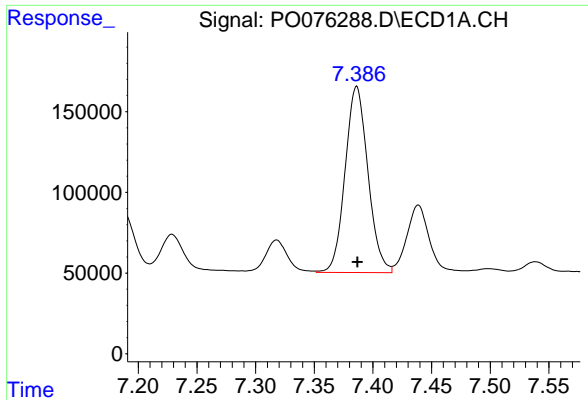
#25 AR-1248-5
 R.T.: 6.093 min
 Delta R.T.: -0.003 min
 Response: 139473
 Conc: 90.18 ng/ml



#26 AR-1254-1
 R.T.: 7.156 min
 Delta R.T.: 0.000 min
 Response: 1002142
 Conc: 488.99 ng/ml



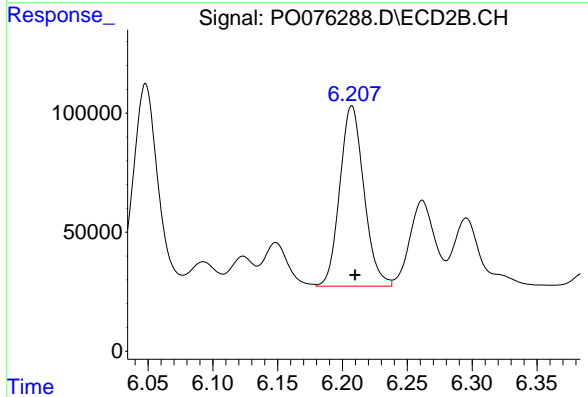
#26 AR-1254-1
 R.T.: 6.048 min
 Delta R.T.: -0.003 min
 Response: 1121304
 Conc: 490.61 ng/ml



#27 AR-1254-2

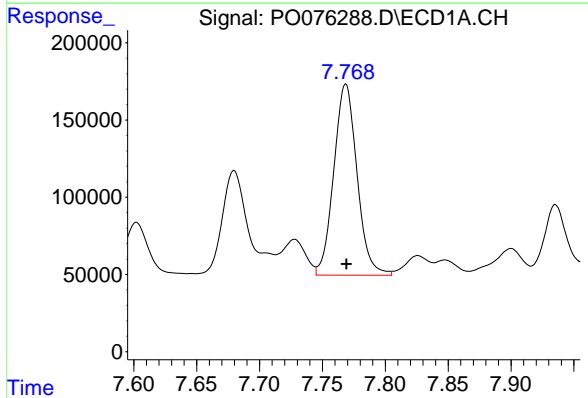
R.T.: 7.386 min
 Delta R.T.: 0.000 min
 Response: 1563324
 Conc: 503.07 ng/ml

Instrument :
 ECD_O
 ClientSampleId :
 AR1254CCC500



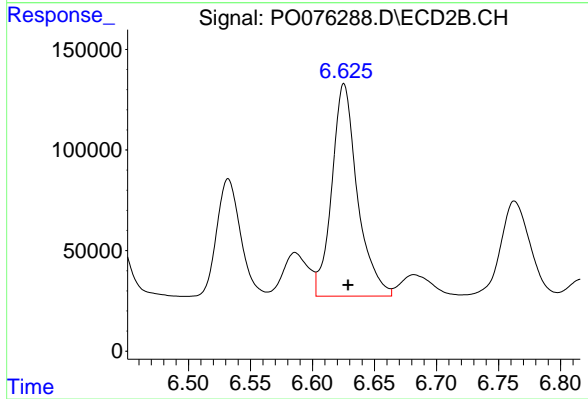
#27 AR-1254-2

R.T.: 6.207 min
 Delta R.T.: -0.002 min
 Response: 981917
 Conc: 495.78 ng/ml



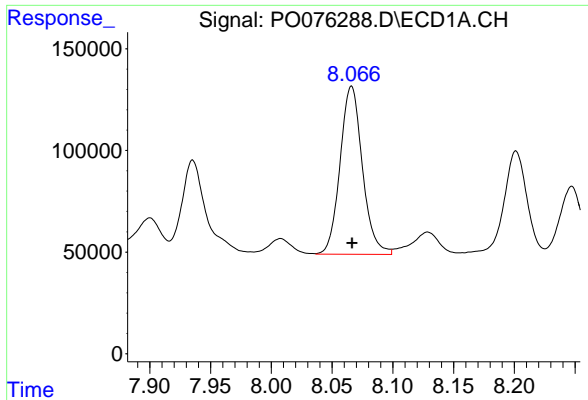
#28 AR-1254-3

R.T.: 7.769 min
 Delta R.T.: 0.000 min
 Response: 1592066
 Conc: 500.42 ng/ml



#28 AR-1254-3

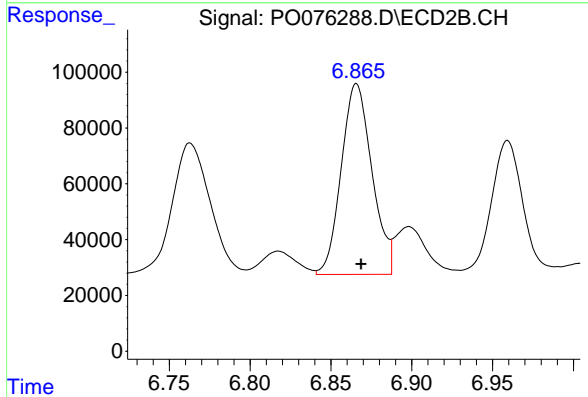
R.T.: 6.625 min
 Delta R.T.: -0.003 min
 Response: 1515461
 Conc: 503.14 ng/ml



#29 AR-1254-4

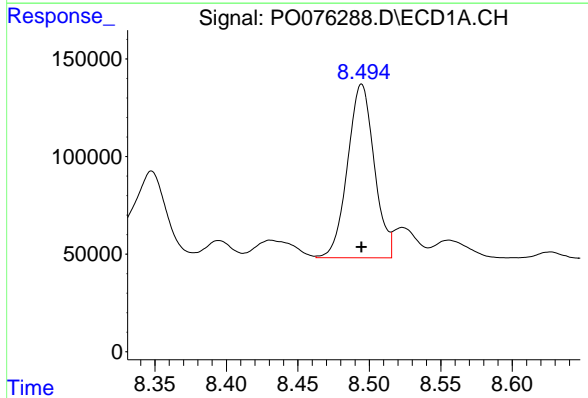
R.T.: 8.066 min
Delta R.T.: 0.000 min
Response: 1056705
Conc: 504.36 ng/ml

Instrument :
ECD_O
ClientSampleId :
AR1254CCC500



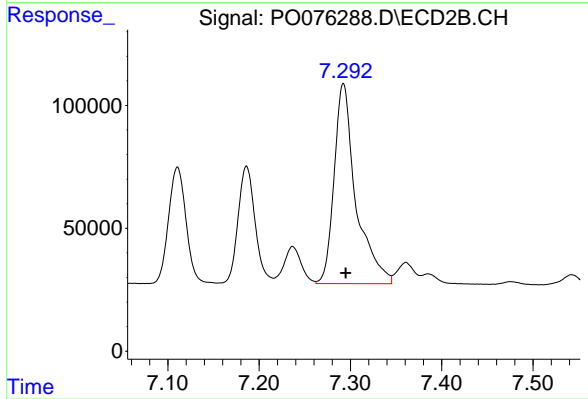
#29 AR-1254-4

R.T.: 6.866 min
Delta R.T.: -0.003 min
Response: 903851
Conc: 512.19 ng/ml



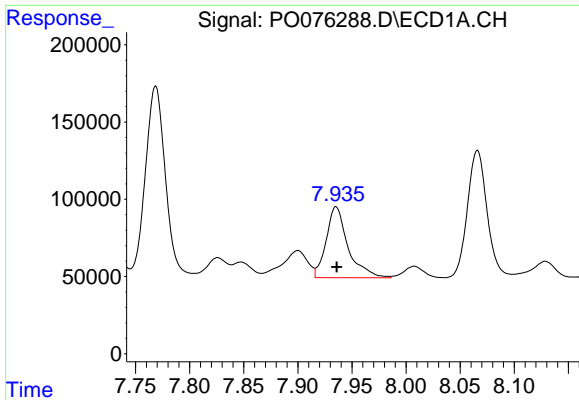
#30 AR-1254-5

R.T.: 8.495 min
Delta R.T.: 0.000 min
Response: 1156371
Conc: 503.50 ng/ml



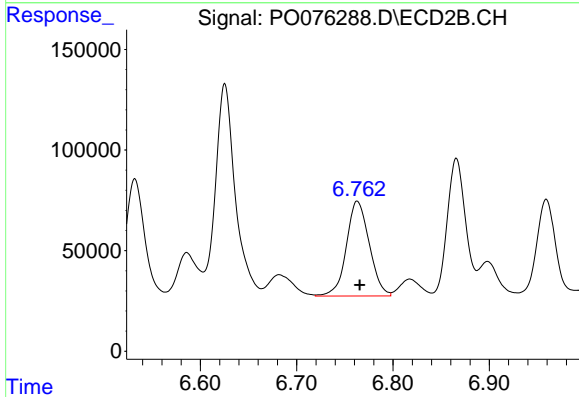
#30 AR-1254-5

R.T.: 7.292 min
Delta R.T.: -0.003 min
Response: 1348602
Conc: 515.11 ng/ml

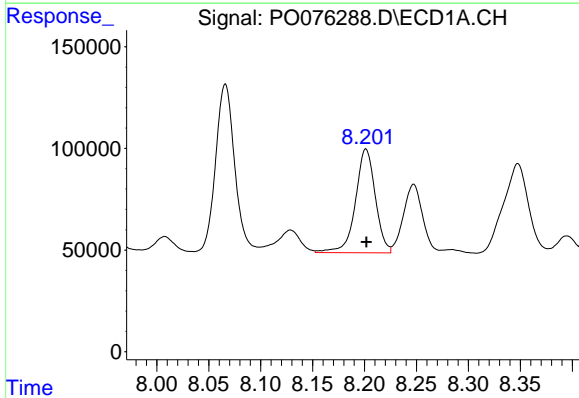


#31 AR-1260-1
 R.T.: 7.935 min
 Delta R.T.: 0.000 min
 Response: 646936
 Conc: 278.25 ng/ml

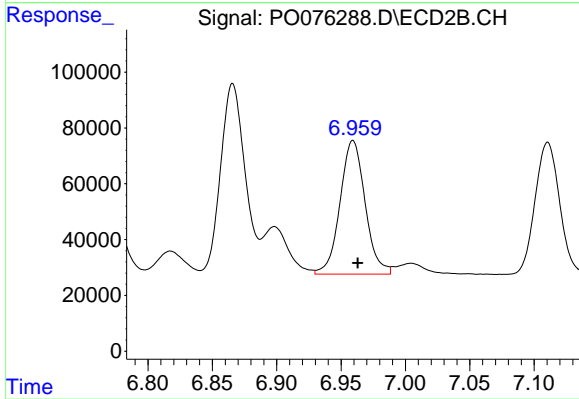
Instrument :
 ECD_O
ClientSampleId :
 AR1254CCC500



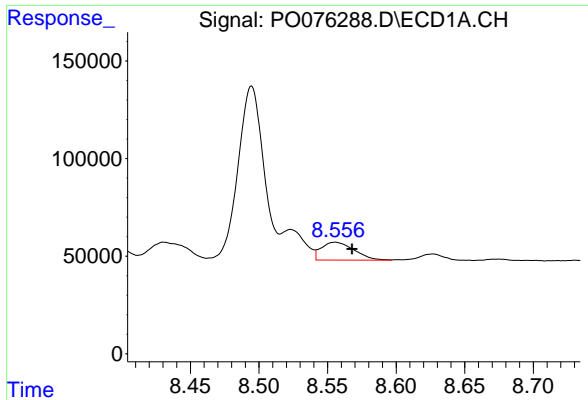
#31 AR-1260-1
 R.T.: 6.763 min
 Delta R.T.: -0.003 min
 Response: 777922
 Conc: 378.68 ng/ml



#32 AR-1260-2
 R.T.: 8.201 min
 Delta R.T.: 0.000 min
 Response: 679936
 Conc: 266.29 ng/ml



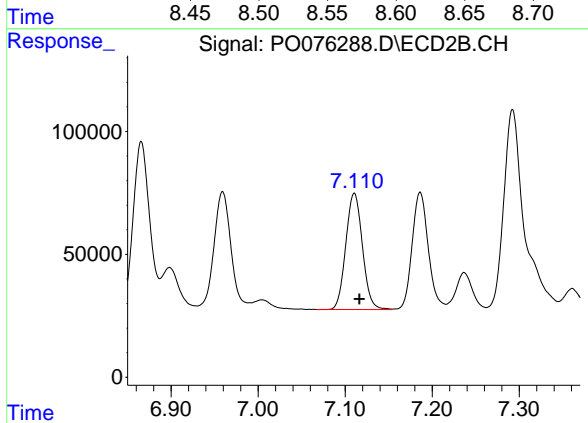
#32 AR-1260-2
 R.T.: 6.959 min
 Delta R.T.: -0.004 min
 Response: 650760
 Conc: 268.33 ng/ml



#33 AR-1260-3

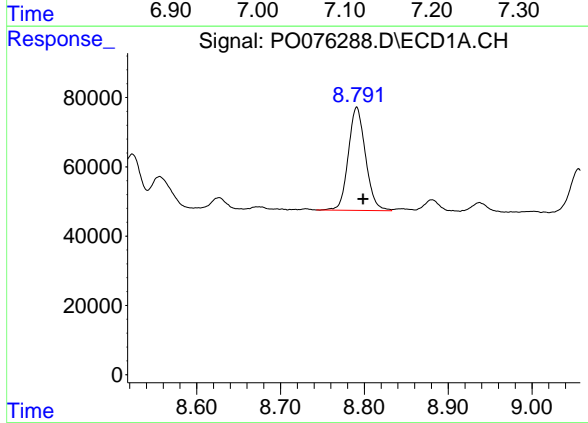
R.T.: 8.556 min
 Delta R.T.: -0.012 min
 Response: 152697
 Conc: 77.02 ng/ml

Instrument :
 ECD_O
 ClientSampleId :
 AR1254CCC500



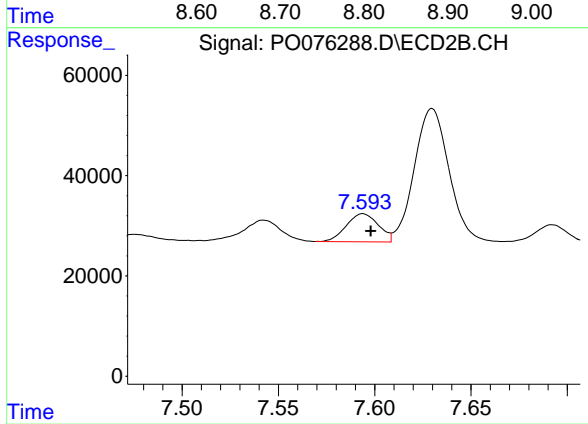
#33 AR-1260-3

R.T.: 7.111 min
 Delta R.T.: -0.006 min
 Response: 628688
 Conc: 277.98 ng/ml



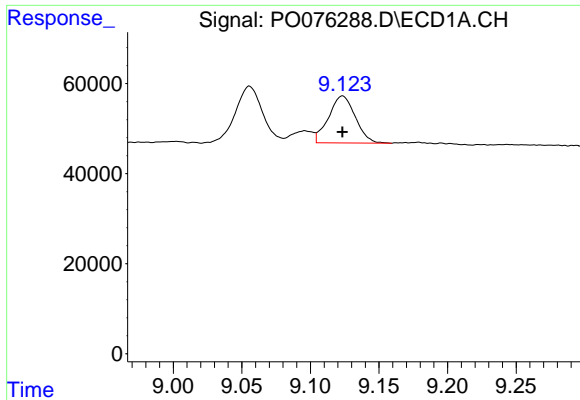
#34 AR-1260-4

R.T.: 8.791 min
 Delta R.T.: -0.008 min
 Response: 424423
 Conc: 187.87 ng/ml



#34 AR-1260-4

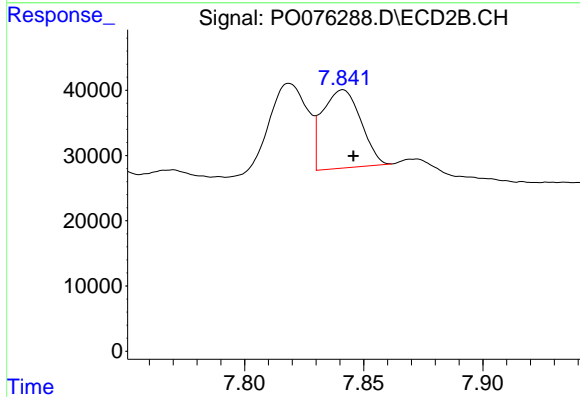
R.T.: 7.594 min
 Delta R.T.: -0.004 min
 Response: 64930
 Conc: 33.70 ng/ml



#35 AR-1260-5

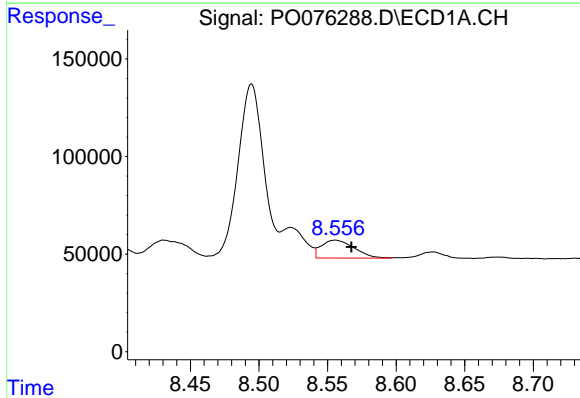
R.T.: 9.123 min
 Delta R.T.: 0.000 min
 Response: 141551
 Conc: 34.63 ng/ml

Instrument :
 ECD_O
 ClientSampleId :
 AR1254CCC500



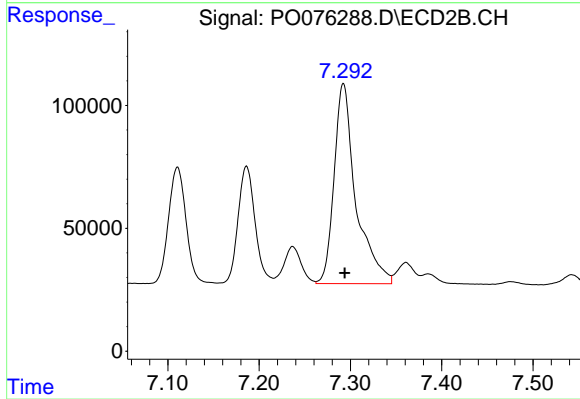
#35 AR-1260-5

R.T.: 7.841 min
 Delta R.T.: -0.004 min
 Response: 134730
 Conc: 30.47 ng/ml



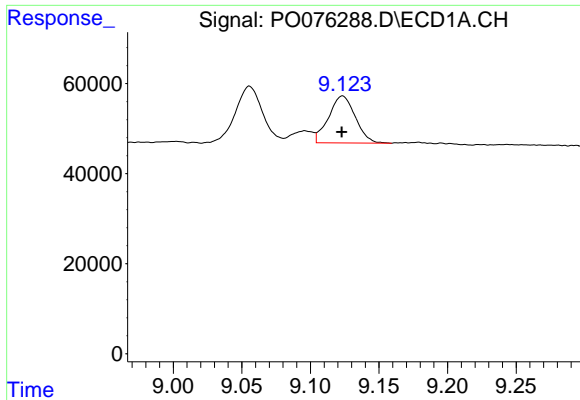
#36 AR-1262-1

R.T.: 8.556 min
 Delta R.T.: -0.012 min
 Response: 152697
 Conc: 51.61 ng/ml



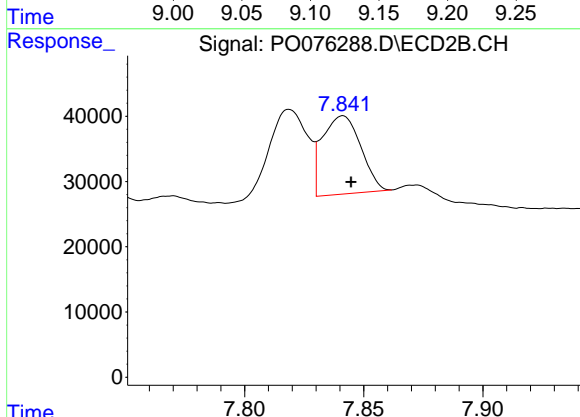
#36 AR-1262-1

R.T.: 7.292 min
 Delta R.T.: -0.001 min
 Response: 1348602
 Conc: 923.45 ng/ml

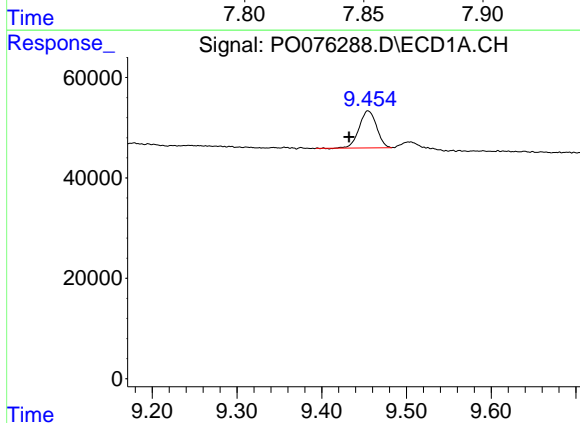


#37 AR-1262-2
 R.T.: 9.123 min
 Delta R.T.: 0.000 min
 Response: 141551
 Conc: 29.24 ng/ml

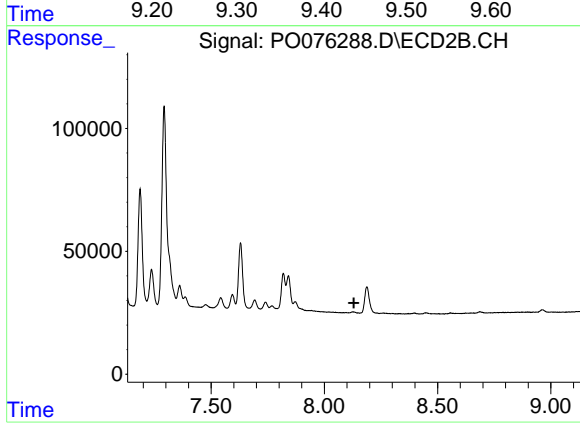
Instrument :
 ECD_O
 ClientSampleId :
 AR1254CCC500



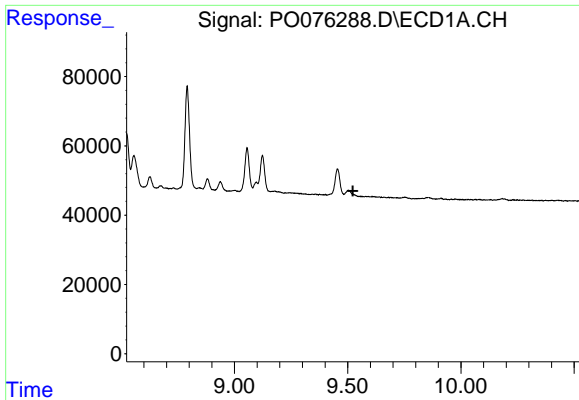
#37 AR-1262-2
 R.T.: 7.841 min
 Delta R.T.: -0.003 min
 Response: 134730
 Conc: 27.20 ng/ml



#38 AR-1262-3
 R.T.: 9.455 min
 Delta R.T.: 0.023 min
 Response: 105458
 Conc: 31.91 ng/ml



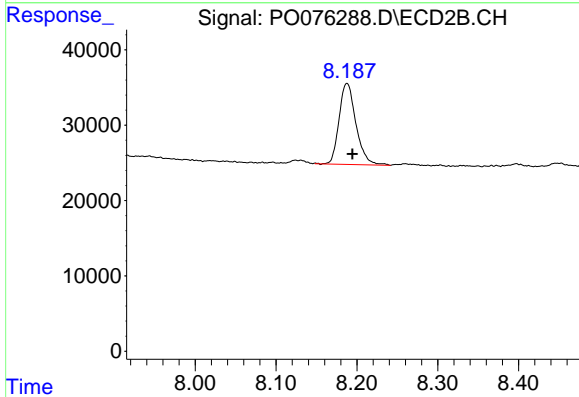
#38 AR-1262-3
 R.T.: 0.000 min
 Exp R.T. : 8.131 min
 Response: 0
 Conc: N.D.



#39 AR-1262-4

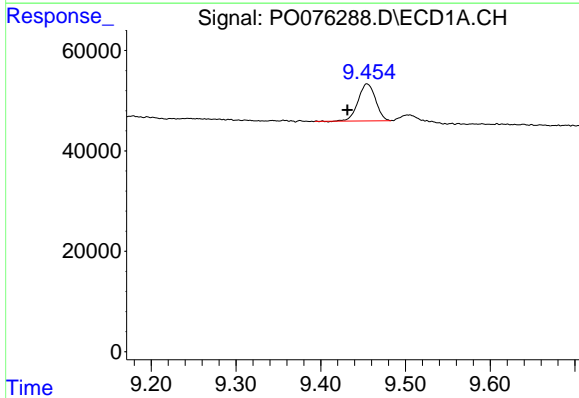
R.T.: 0.000 min
 Exp R.T.: 9.523 min
 Response: 0
 Conc: N.D.

Instrument :
 ECD_O
 ClientSampleId :
 AR1254CCC500



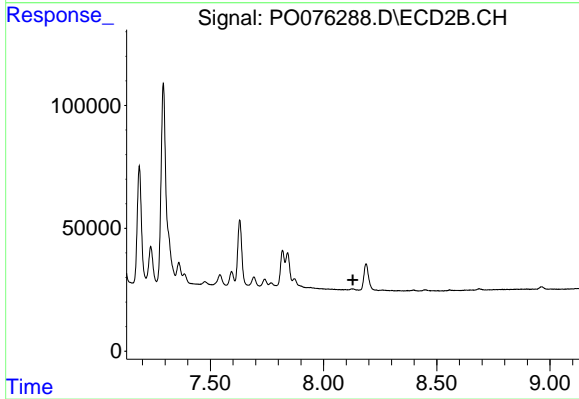
#39 AR-1262-4

R.T.: 8.188 min
 Delta R.T.: -0.006 min
 Response: 156129
 Conc: 41.28 ng/ml



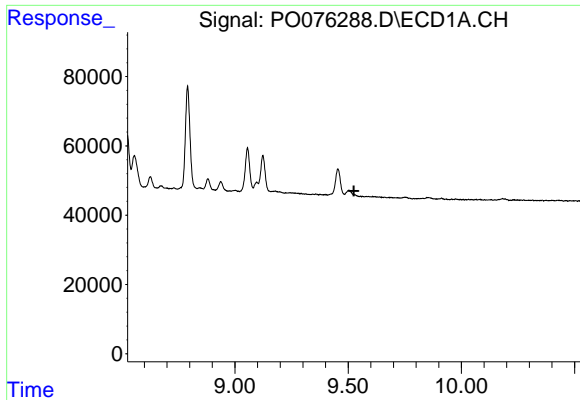
#41 AR-1268-1

R.T.: 9.455 min
 Delta R.T.: 0.023 min
 Response: 105458
 Conc: 18.10 ng/ml



#41 AR-1268-1

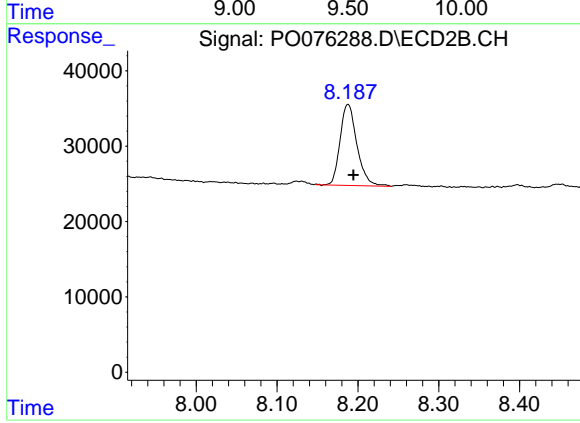
R.T.: 0.000 min
 Exp R.T.: 8.129 min
 Response: 0
 Conc: N.D.



#42 AR-1268-2

R.T.: 0.000 min
Exp R.T.: 9.526 min
Response: 0
Conc: N.D.

Instrument :
ECD_O
ClientSampled :
AR1254CCC500



#42 AR-1268-2

R.T.: 8.188 min
Delta R.T.: -0.007 min
Response: 156129
Conc: 29.31 ng/ml