

Data Path : Z:\pestpcbsrv\HPCHEM1\ECD\_0\Data\P0031821\  
 Data File : P0076304.D  
 Signal(s) : Signal #1: ECD1A.CH Signal #2: ECD2B.CH  
 Acq On : 18 Mar 2021 17:51  
 Operator : DD\AJ  
 Sample : I.BLK  
 Misc :  
 ALS Vial : 2 Sample Multiplier: 1

Instrument :  
 ECD\_0  
 ClientSampleId :  
 I.BLK

Integration File signal 1: autoint1.e  
 Integration File signal 2: autoint2.e  
 Quant Time: Mar 18 18:22:09 2021  
 Quant Method : Z:\pestpcbsrv\HPCHEM1\ECD\_0\methods\P0031521.M  
 Quant Title : GC EXTRACTABLES  
 QLast Update : Tue Mar 16 07:18:57 2021  
 Response via : Initial Calibration  
 Integrator: ChemStation 6890 Scale Mode: Small noise peaks clipped

Volume Inj. : 2 µl  
 Signal #1 Phase : ZB-MR1 Signal #2 Phase: ZB-MR2  
 Signal #1 Info : 30Mx0.32mmx 0.50µ Signal #2 Info : 30M x 0.32mm x 0.25µm

Compound	RT#1	RT#2	Resp#1	Resp#2	ng/ml	ng/ml
-----						
System Monitoring Compounds						
1) SA Tetrachlo...	4.921	3.934	1231593	914556	21.679	21.921
2) SA Decachlor...	10.925	9.200	980628	929445	25.495	24.206

Target Compounds

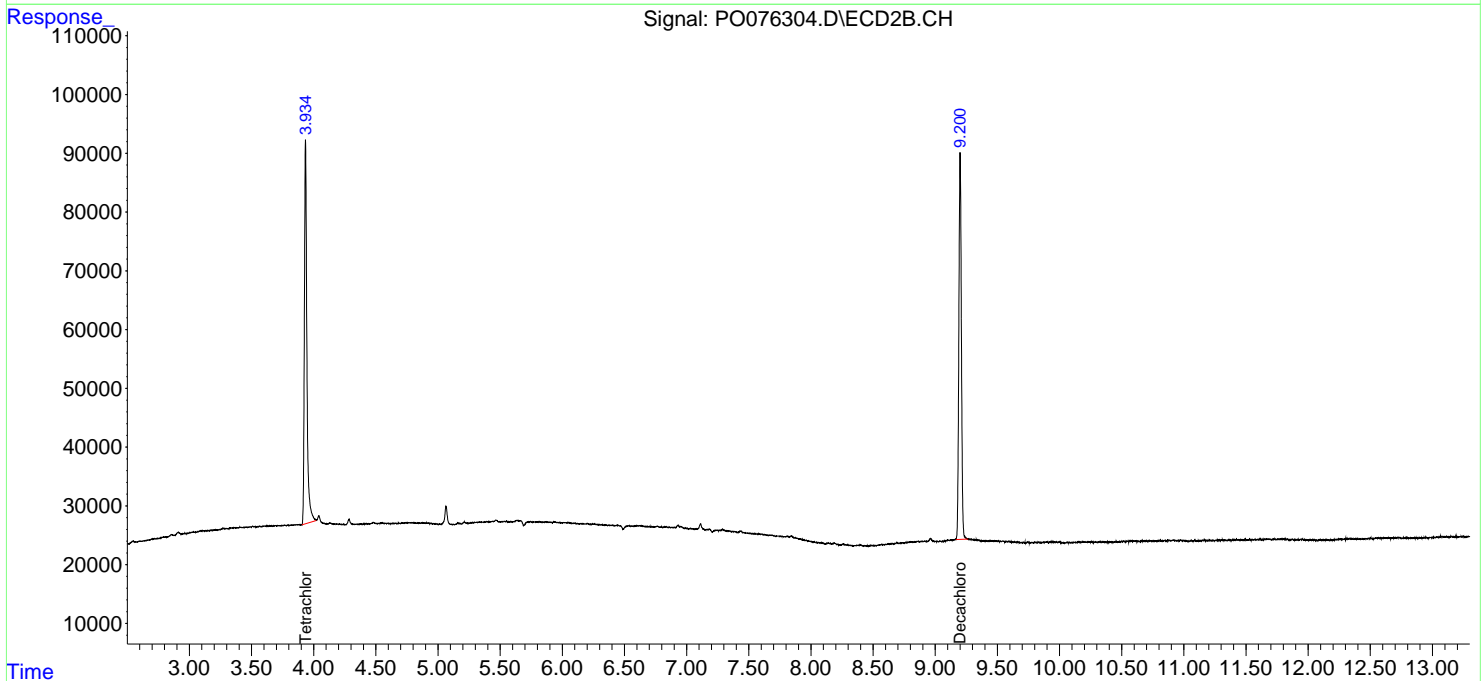
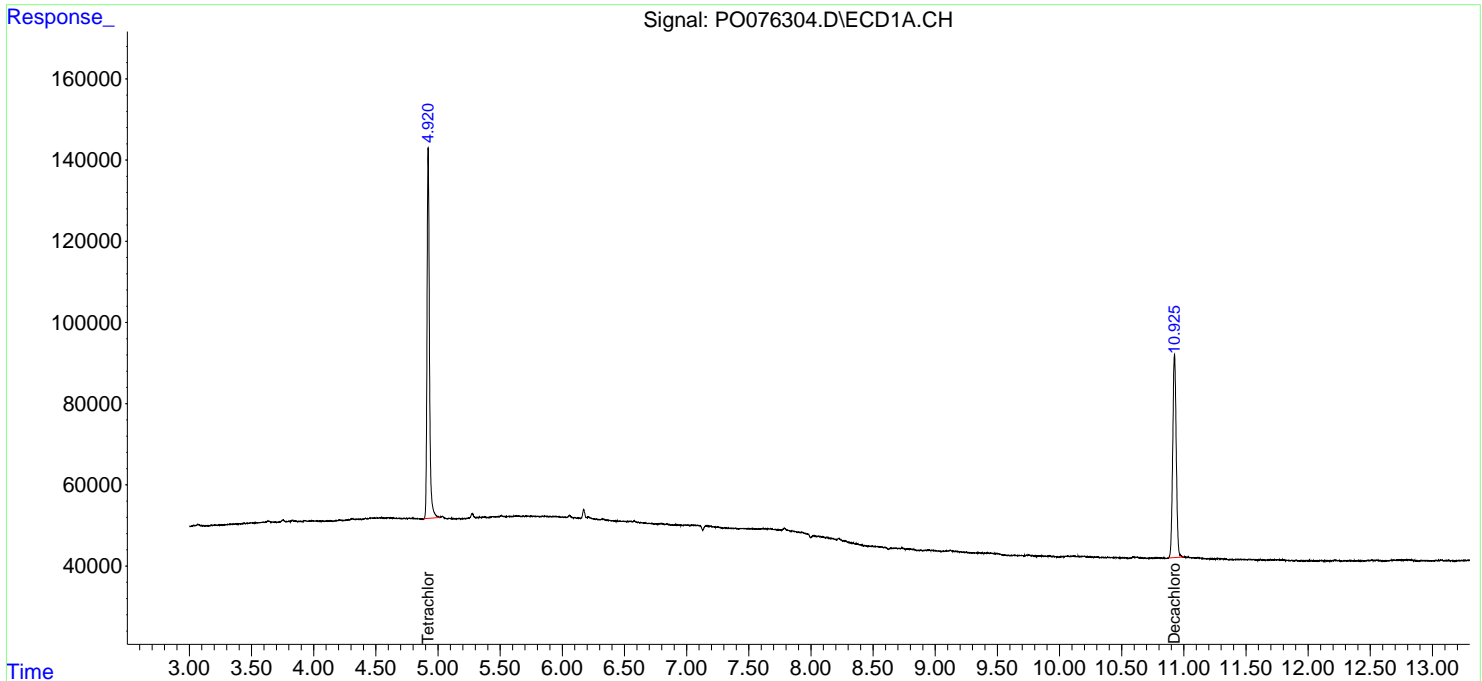
(f)=RT Delta > 1/2 Window (#)=Amounts differ by > 25% (m)=manual int.

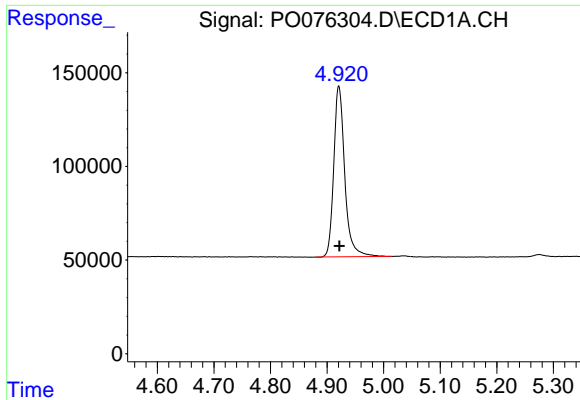
Data Path : Z:\pestpcbsrv\HPCHEM1\ECD\_0\Data\P0031821\  
 Data File : P0076304.D  
 Signal(s) : Signal #1: ECD1A.CH Signal #2: ECD2B.CH  
 Acq On : 18 Mar 2021 17:51  
 Operator : DD\AJ  
 Sample : I.BLK  
 Misc :  
 ALS Vial : 2 Sample Multiplier: 1

**Instrument :**  
 ECD\_O  
**ClientSampleId :**  
 I.BLK

Integration File signal 1: autoint1.e  
 Integration File signal 2: autoint2.e  
 Quant Time: Mar 18 18:22:09 2021  
 Quant Method : Z:\pestpcbsrv\HPCHEM1\ECD\_0\methods\P0031521.M  
 Quant Title : GC EXTRACTABLES  
 QLast Update : Tue Mar 16 07:18:57 2021  
 Response via : Initial Calibration  
 Integrator: ChemStation 6890 Scale Mode: Small noise peaks clipped

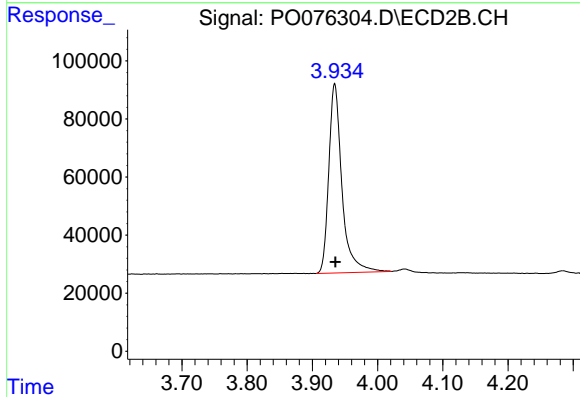
Volume Inj. : 2 µl  
 Signal #1 Phase : ZB-MR1 Signal #2 Phase: ZB-MR2  
 Signal #1 Info : 30Mx0.32mmx 0.50µ Signal #2 Info : 30M x 0.32mm x 0.25µm



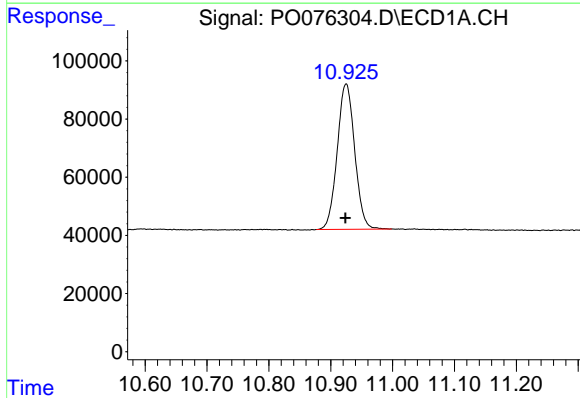


#1 Tetrachloro-m-xylene  
 R.T.: 4.921 min  
 Delta R.T.: -0.001 min  
 Response: 1231593  
 Conc: 21.68 ng/ml

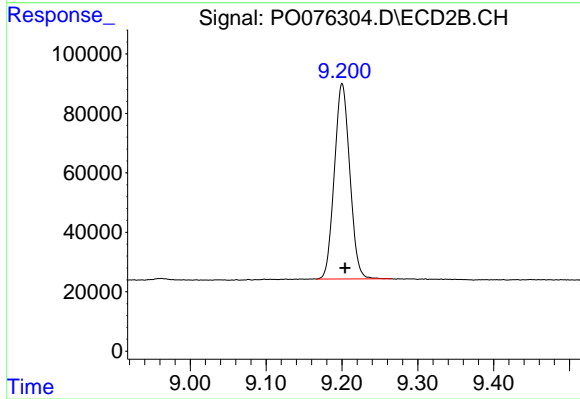
Instrument :  
 ECD\_O  
 ClientSampled :  
 I.BLK



#1 Tetrachloro-m-xylene  
 R.T.: 3.934 min  
 Delta R.T.: -0.001 min  
 Response: 914556  
 Conc: 21.92 ng/ml



#2 Decachlorobiphenyl  
 R.T.: 10.925 min  
 Delta R.T.: 0.001 min  
 Response: 980628  
 Conc: 25.49 ng/ml



#2 Decachlorobiphenyl  
 R.T.: 9.200 min  
 Delta R.T.: -0.004 min  
 Response: 929445  
 Conc: 24.21 ng/ml