

Data Path : Z:\pestpcbsrv\HPCHEM1\ECD_0\Data\P0031821\
 Data File : P0076283.D
 Signal(s) : Signal #1: ECD1A.CH Signal #2: ECD2B.CH
 Acq On : 18 Mar 2021 11:14
 Operator : DD\AJ
 Sample : M1687-33
 Misc :
 ALS Vial : 9 Sample Multiplier: 1

Instrument :
 ECD_0
 ClientSampleId :
 AUD-1044-1046

Integration File signal 1: autoint1.e
 Integration File signal 2: autoint2.e
 Quant Time: Mar 18 17:06:23 2021
 Quant Method : Z:\pestpcbsrv\HPCHEM1\ECD_0\methods\P0031521.M
 Quant Title : GC EXTRACTABLES
 QLast Update : Tue Mar 16 07:18:57 2021
 Response via : Initial Calibration
 Integrator: ChemStation 6890 Scale Mode: Small noise peaks clipped

Volume Inj. : 2 µl
 Signal #1 Phase : ZB-MR1 Signal #2 Phase: ZB-MR2
 Signal #1 Info : 30Mx0.32mmx 0.50µ Signal #2 Info : 30M x 0.32mm x 0.25µm

Compound	RT#1	RT#2	Resp#1	Resp#2	ng/ml	ng/ml

System Monitoring Compounds						
1) SA Tetrachlo...	4.923	3.936	1496463	1102972	26.342	26.437
2) SA Decachlor...	10.922	9.200	469902	473090	12.217	12.321
Target Compounds						
26) L6 AR-1254-1	7.156	6.047	147856	200848	72.146	87.879
27) L6 AR-1254-2	7.385	6.207	354814	286326	114.178	144.569 #
28) L6 AR-1254-3	7.768	6.625	358156	375241	112.577	124.580
29) L6 AR-1254-4	8.065	6.865	341561	270505	163.025	153.288
30) L6 AR-1254-5	8.493	7.292	248678	290719	108.277	111.043

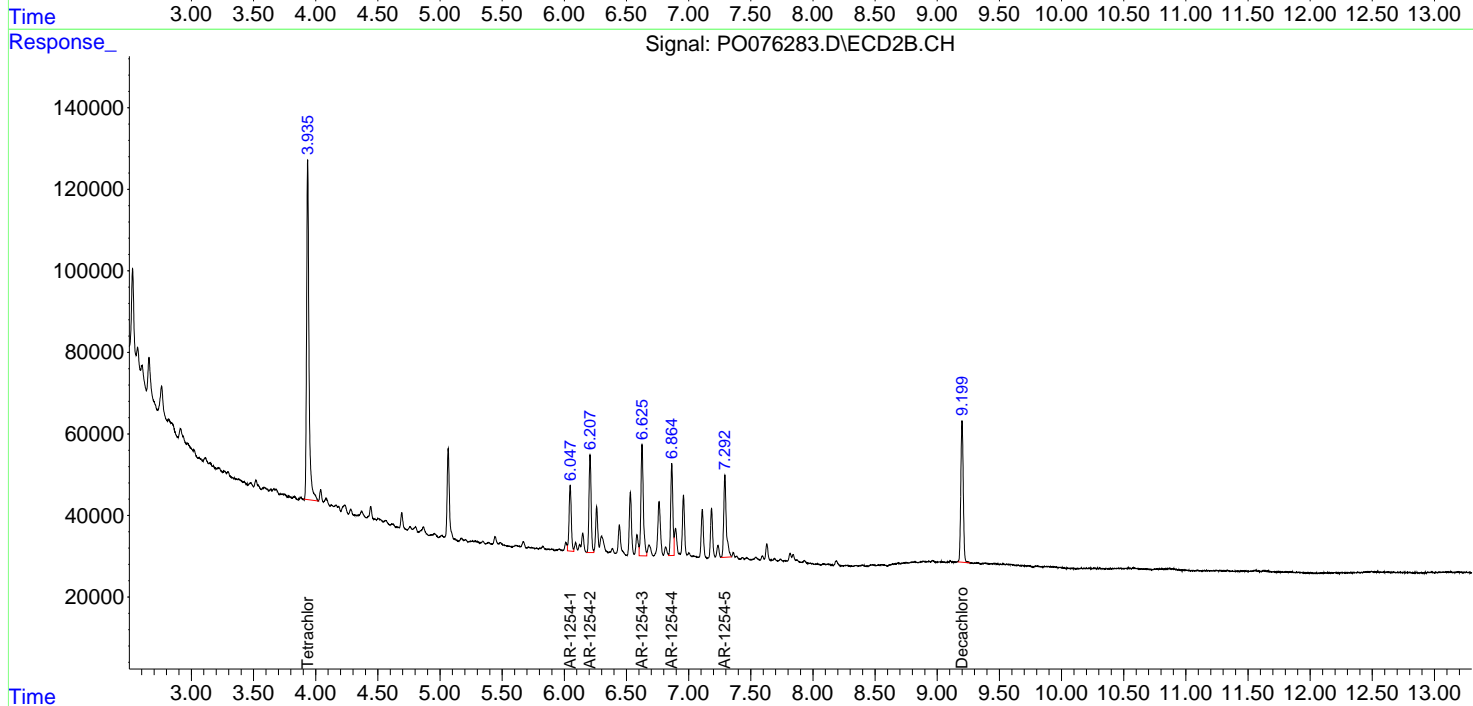
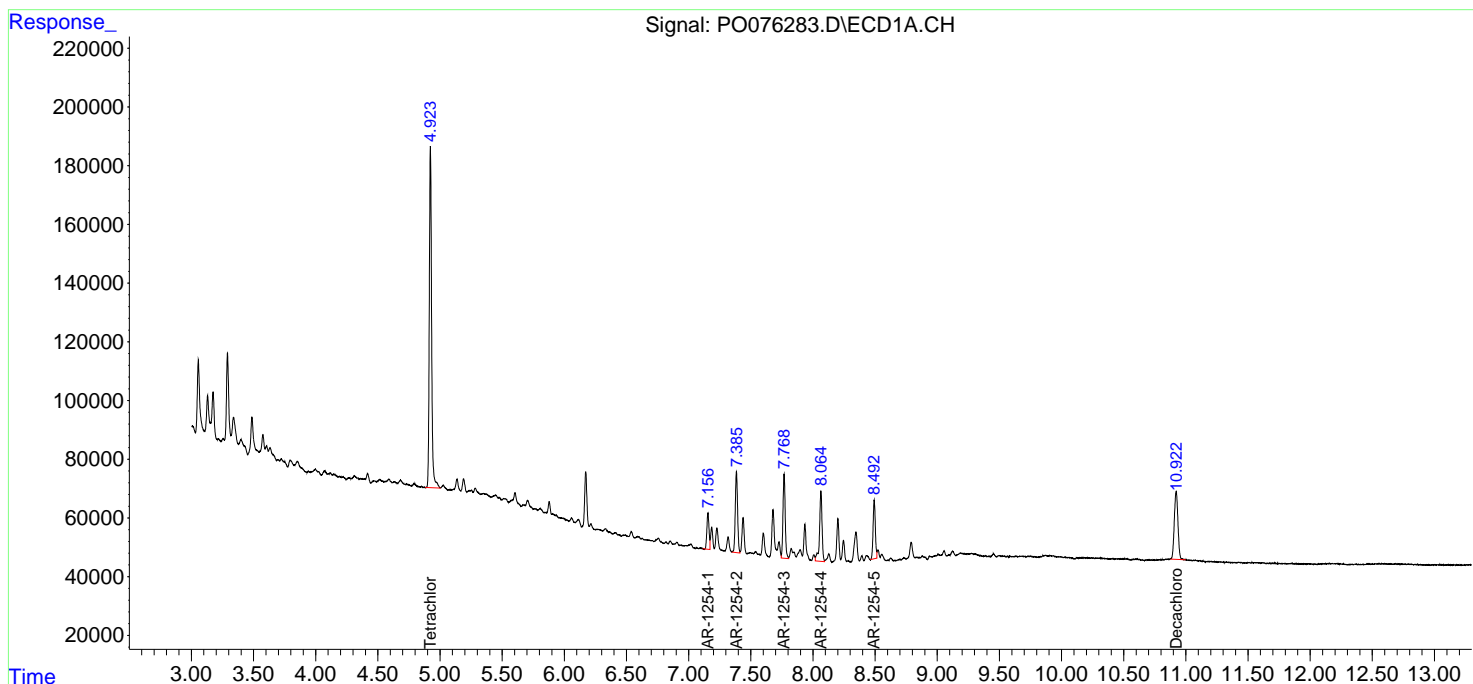
(f)=RT Delta > 1/2 Window (#)=Amounts differ by > 25% (m)=manual int.

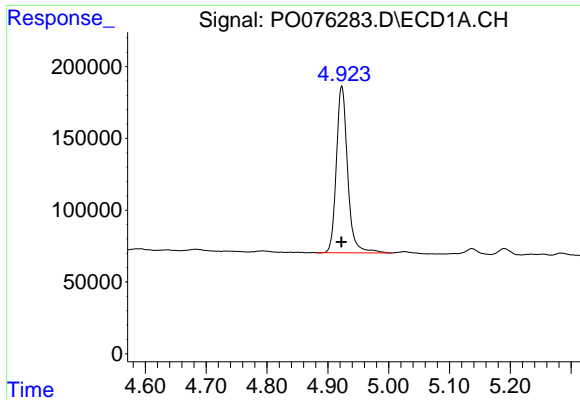
Data Path : Z:\pestpcbsrv\HPCHEM1\ECD_0\Data\P0031821\
 Data File : P0076283.D
 Signal(s) : Signal #1: ECD1A.CH Signal #2: ECD2B.CH
 Acq On : 18 Mar 2021 11:14
 Operator : DD\AJ
 Sample : M1687-33
 Misc :
 ALS Vial : 9 Sample Multiplier: 1

Instrument :
 ECD_O
 ClientSampled :
 AUD-1044-1046

Integration File signal 1: autoint1.e
 Integration File signal 2: autoint2.e
 Quant Time: Mar 18 17:06:23 2021
 Quant Method : Z:\pestpcbsrv\HPCHEM1\ECD_0\methods\P0031521.M
 Quant Title : GC EXTRACTABLES
 QLast Update : Tue Mar 16 07:18:57 2021
 Response via : Initial Calibration
 Integrator: ChemStation 6890 Scale Mode: Small noise peaks clipped

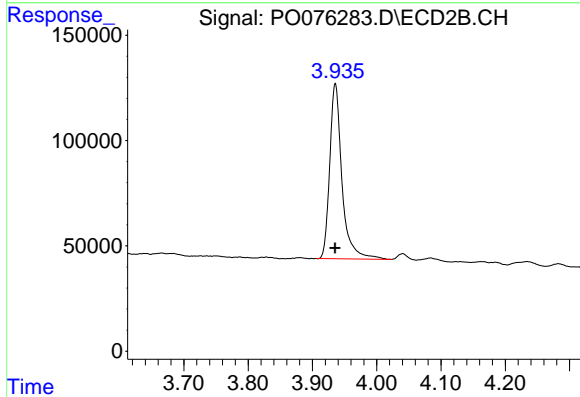
Volume Inj. : 2 µl
 Signal #1 Phase : ZB-MR1 Signal #2 Phase: ZB-MR2
 Signal #1 Info : 30Mx0.32mmx 0.50µ Signal #2 Info : 30M x 0.32mm x 0.25µm



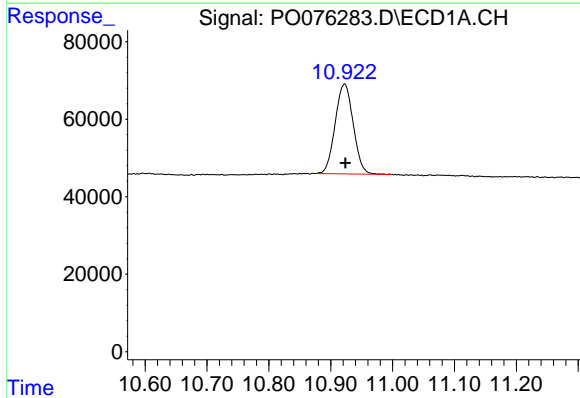


#1 Tetrachloro-m-xylene
 R.T.: 4.923 min
 Delta R.T.: 0.000 min
 Response: 1496463
 Conc: 26.34 ng/ml

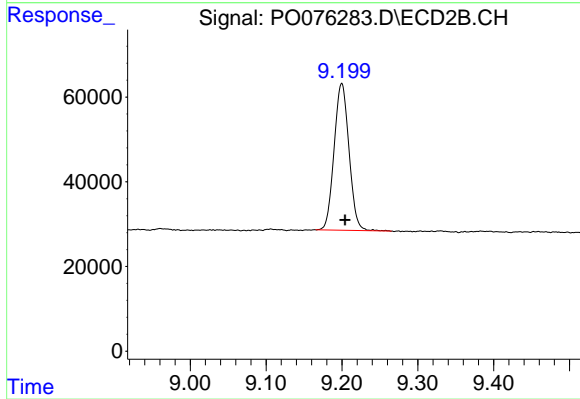
Instrument :
 ECD_O
 ClientSampleId :
 AUD-1044-1046



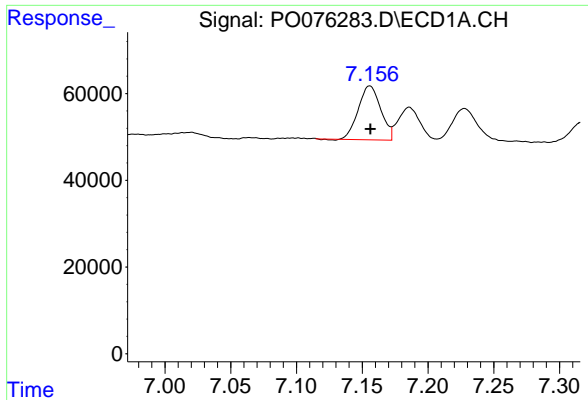
#1 Tetrachloro-m-xylene
 R.T.: 3.936 min
 Delta R.T.: 0.000 min
 Response: 1102972
 Conc: 26.44 ng/ml



#2 Decachlorobiphenyl
 R.T.: 10.922 min
 Delta R.T.: -0.001 min
 Response: 469902
 Conc: 12.22 ng/ml

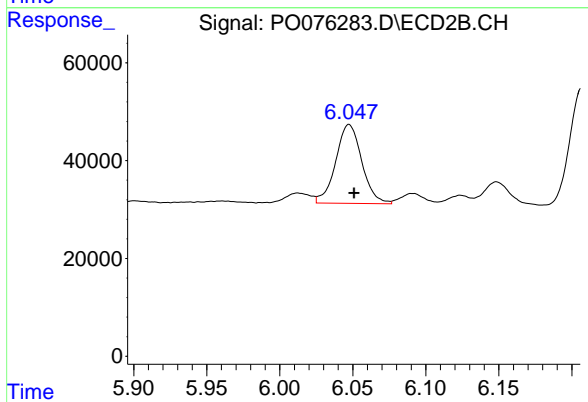


#2 Decachlorobiphenyl
 R.T.: 9.200 min
 Delta R.T.: -0.004 min
 Response: 473090
 Conc: 12.32 ng/ml

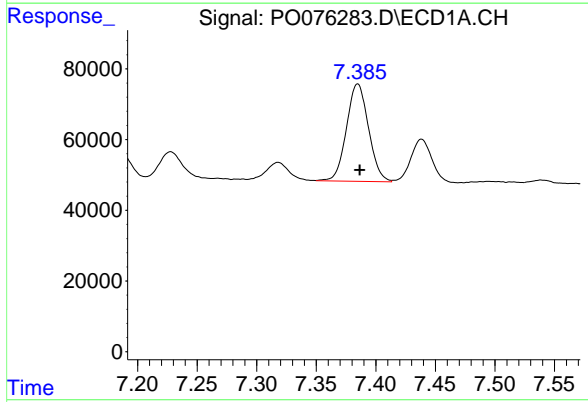


#26 AR-1254-1
 R.T.: 7.156 min
 Delta R.T.: 0.000 min
 Response: 147856
 Conc: 72.15 ng/ml

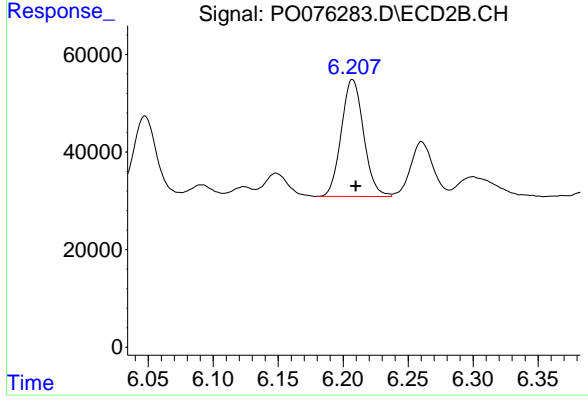
Instrument :
 ECD_O
 ClientSampleId :
 AUD-1044-1046



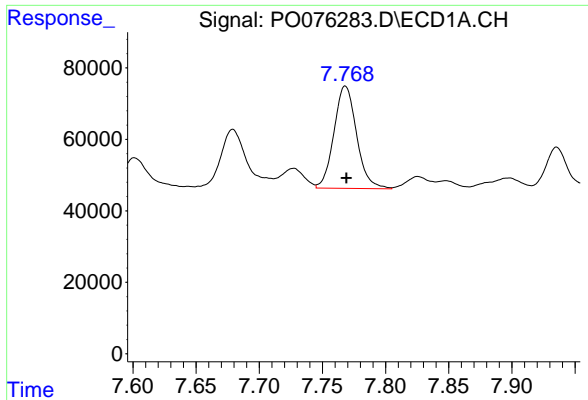
#26 AR-1254-1
 R.T.: 6.047 min
 Delta R.T.: -0.003 min
 Response: 200848
 Conc: 87.88 ng/ml



#27 AR-1254-2
 R.T.: 7.385 min
 Delta R.T.: -0.002 min
 Response: 354814
 Conc: 114.18 ng/ml



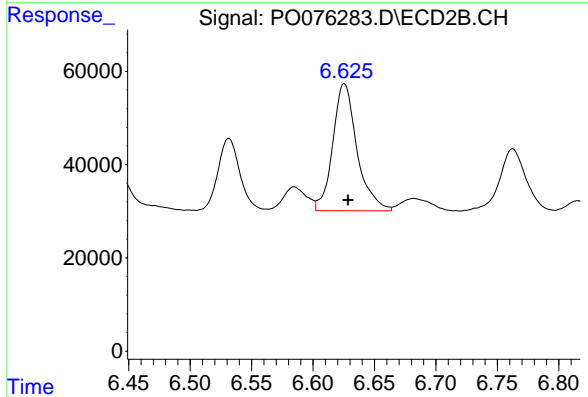
#27 AR-1254-2
 R.T.: 6.207 min
 Delta R.T.: -0.002 min
 Response: 286326
 Conc: 144.57 ng/ml



#28 AR-1254-3

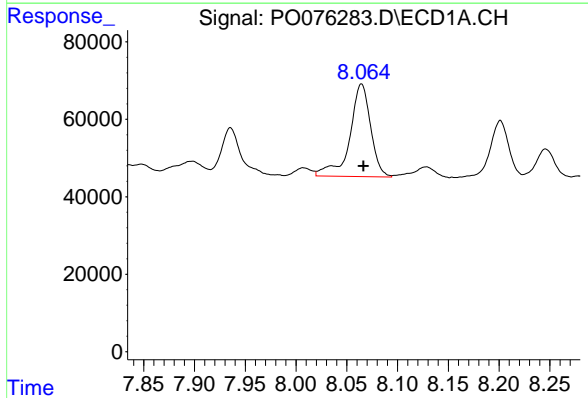
R.T.: 7.768 min
 Delta R.T.: 0.000 min
 Response: 358156
 Conc: 112.58 ng/ml

Instrument :
 ECD_O
 ClientSampleId :
 AUD-1044-1046



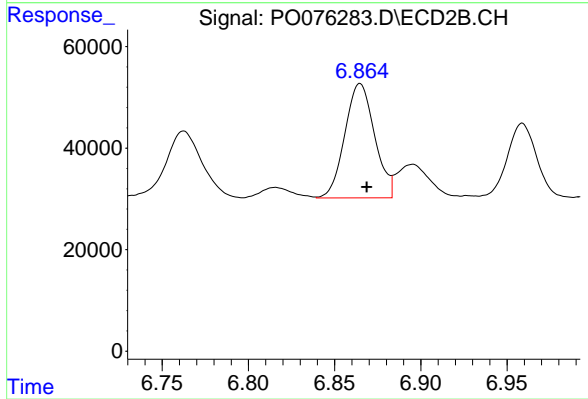
#28 AR-1254-3

R.T.: 6.625 min
 Delta R.T.: -0.003 min
 Response: 375241
 Conc: 124.58 ng/ml



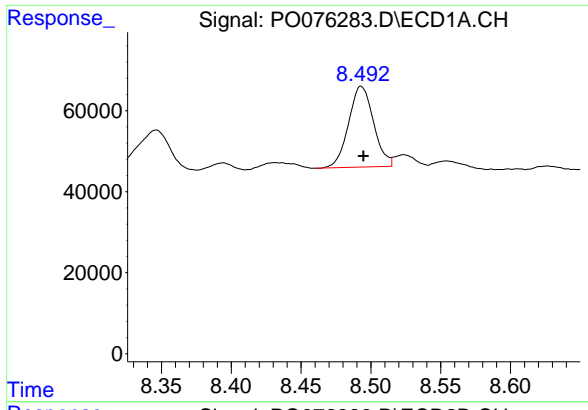
#29 AR-1254-4

R.T.: 8.065 min
 Delta R.T.: -0.002 min
 Response: 341561
 Conc: 163.02 ng/ml



#29 AR-1254-4

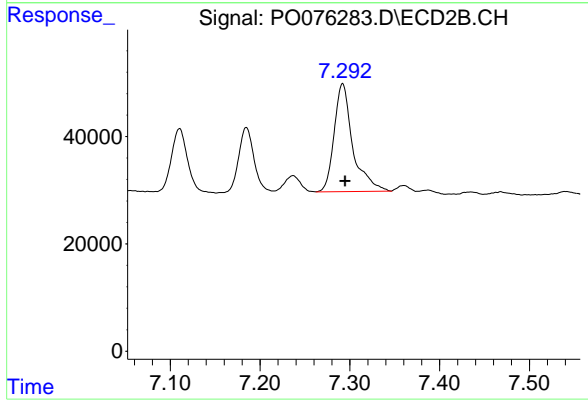
R.T.: 6.865 min
 Delta R.T.: -0.004 min
 Response: 270505
 Conc: 153.29 ng/ml



#30 AR-1254-5

R.T.: 8.493 min
Delta R.T.: -0.001 min
Response: 248678
Conc: 108.28 ng/ml

Instrument :
ECD_O
ClientSampleId :
AUD-1044-1046



#30 AR-1254-5

R.T.: 7.292 min
Delta R.T.: -0.003 min
Response: 290719
Conc: 111.04 ng/ml