

Data Path : Z:\pestpcbsrv\HPCHEM1\ECD_0\Data\P0031821\
 Data File : P0076298.D
 Signal(s) : Signal #1: ECD1A.CH Signal #2: ECD2B.CH
 Acq On : 18 Mar 2021 15:34
 Operator : DD\AJ
 Sample : M1659-02 10X
 Misc :
 ALS Vial : 19 Sample Multiplier: 1

Instrument :
 ECD_0
 ClientSampleId :
 BC274626-1-1

Integration File signal 1: autoint1.e
 Integration File signal 2: autoint2.e
 Quant Time: Mar 18 15:52:16 2021
 Quant Method : Z:\pestpcbsrv\HPCHEM1\ECD_0\methods\P0031521.M
 Quant Title : GC EXTRACTABLES
 QLast Update : Tue Mar 16 07:18:57 2021
 Response via : Initial Calibration
 Integrator: ChemStation 6890 Scale Mode: Small noise peaks clipped

Volume Inj. : 2 µl
 Signal #1 Phase : ZB-MR1 Signal #2 Phase: ZB-MR2
 Signal #1 Info : 30Mx0.32mmx 0.50µ Signal #2 Info : 30M x 0.32mm x 0.25µm

| Compound | RT#1 | RT#2 | Resp#1 | Resp#2 | ng/ml | ng/ml |
|-----------------------------|--------|-------|--------|--------|--------|--------|
| ----- | | | | | | |
| System Monitoring Compounds | | | | | | |
| 1) SA Tetrachlo... | 4.921 | 3.934 | 113164 | 85425 | 1.992 | 2.048 |
| 2) SA Decachlor... | 10.926 | 9.201 | 96859 | 85764 | 2.518 | 2.234 |
| Target Compounds | | | | | | |
| 26) L6 AR-1254-1 | 7.156 | 6.048 | 103539 | 133669 | 50.521 | 58.486 |
| 27) L6 AR-1254-2 | 7.387 | 6.207 | 245593 | 134803 | 79.031 | 68.063 |
| 28) L6 AR-1254-3 | 7.770 | 6.626 | 175672 | 189575 | 55.218 | 62.939 |
| 29) L6 AR-1254-4 | 8.066 | 6.865 | 129751 | 105046 | 61.930 | 59.527 |
| 30) L6 AR-1254-5 | 8.495 | 7.293 | 138307 | 187309 | 60.220 | 71.545 |
| ----- | | | | | | |

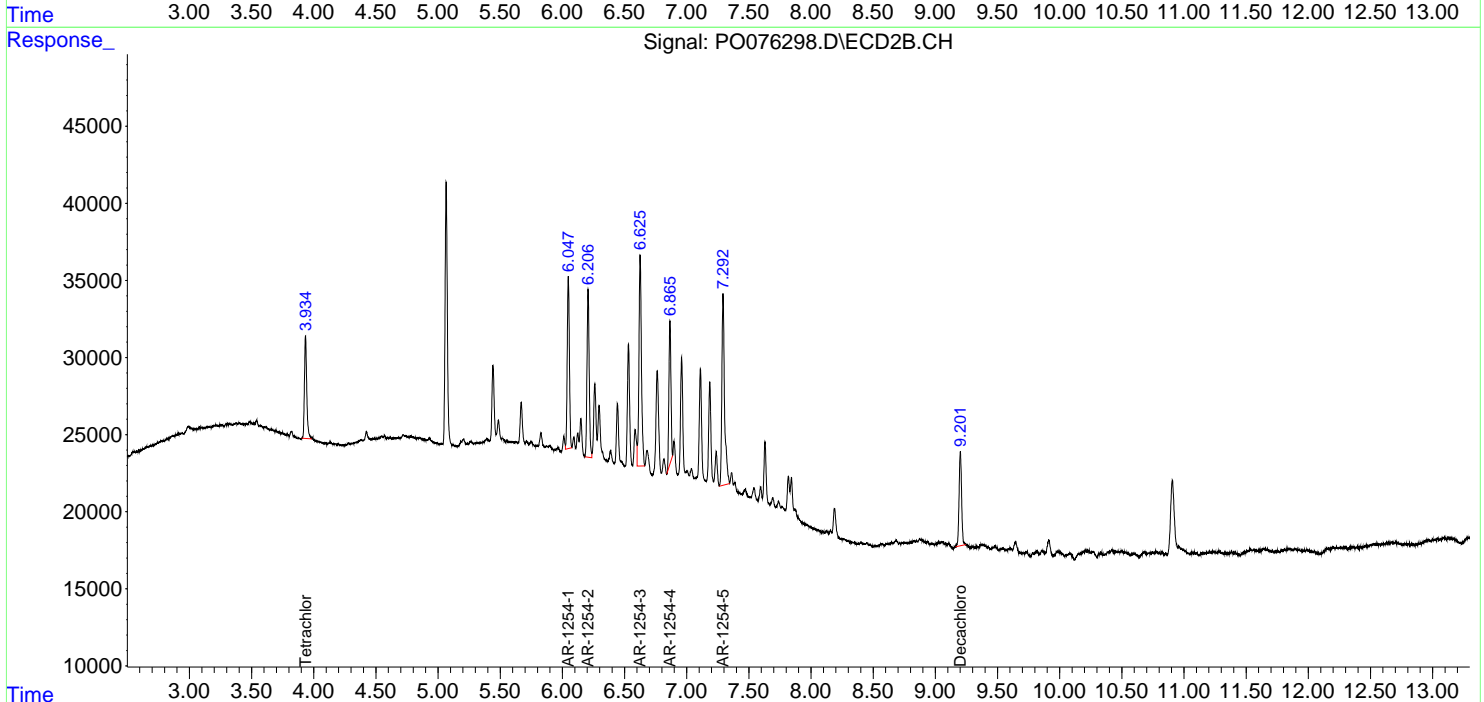
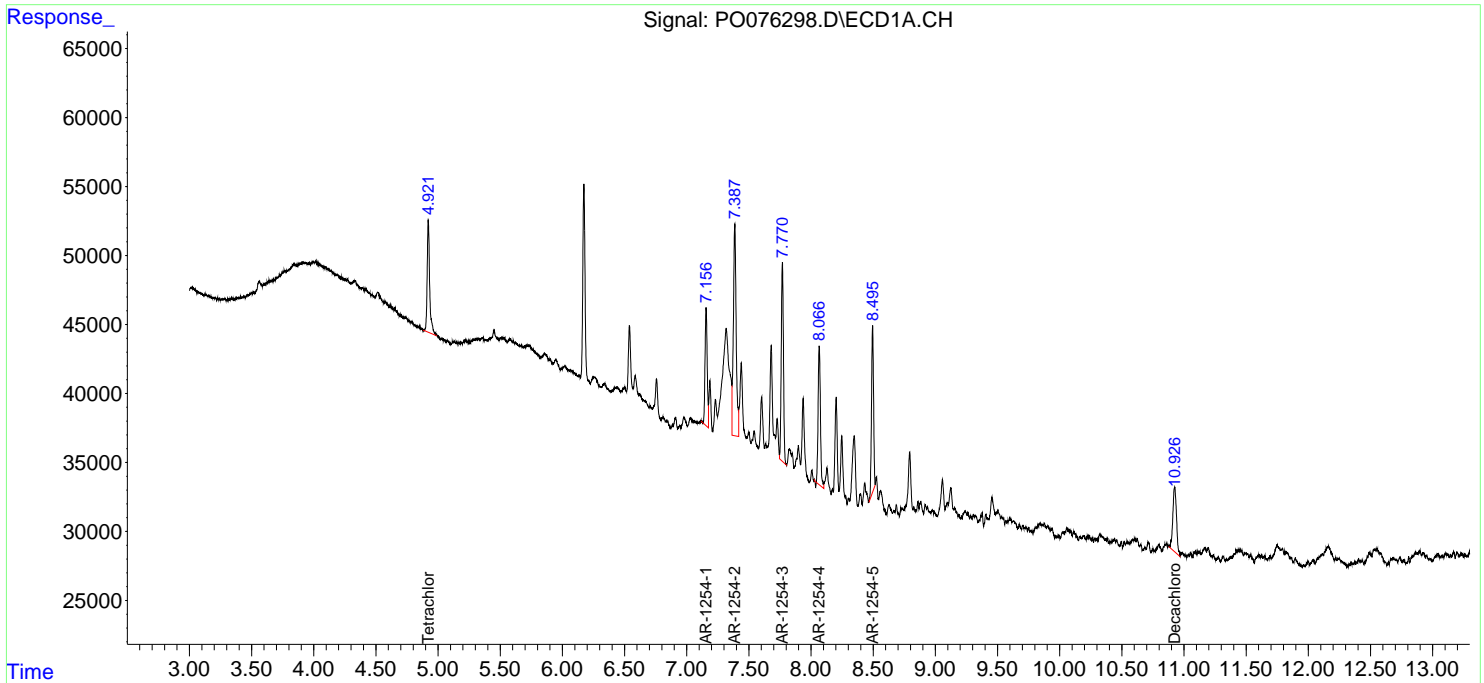
(f)=RT Delta > 1/2 Window (#)=Amounts differ by > 25% (m)=manual int.

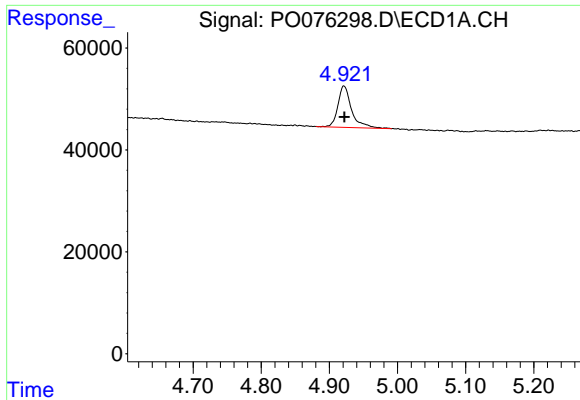
Data Path : Z:\pestpcbsrv\HPCHEM1\ECD_0\Data\P0031821\
 Data File : P0076298.D
 Signal(s) : Signal #1: ECD1A.CH Signal #2: ECD2B.CH
 Acq On : 18 Mar 2021 15:34
 Operator : DD\AJ
 Sample : M1659-02 10X
 Misc :
 ALS Vial : 19 Sample Multiplier: 1

Instrument :
 ECD_O
 ClientSampleID :
 BC274626-1-1

Integration File signal 1: autoint1.e
 Integration File signal 2: autoint2.e
 Quant Time: Mar 18 15:52:16 2021
 Quant Method : Z:\pestpcbsrv\HPCHEM1\ECD_0\methods\P0031521.M
 Quant Title : GC EXTRACTABLES
 QLast Update : Tue Mar 16 07:18:57 2021
 Response via : Initial Calibration
 Integrator: ChemStation 6890 Scale Mode: Small noise peaks clipped

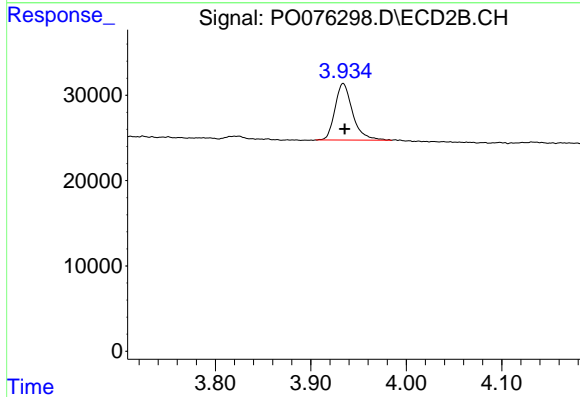
Volume Inj. : 2 µl
 Signal #1 Phase : ZB-MR1 Signal #2 Phase: ZB-MR2
 Signal #1 Info : 30Mx0.32mmx 0.50µ Signal #2 Info : 30M x 0.32mm x 0.25µm



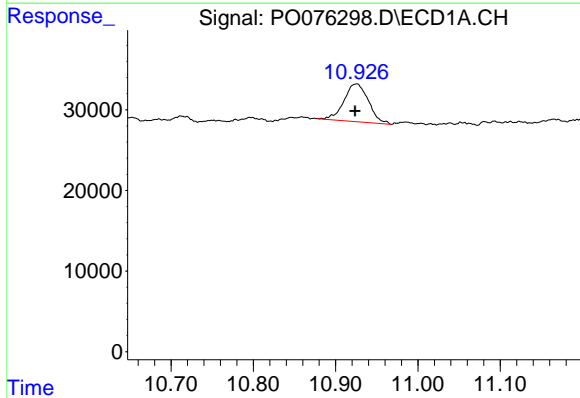


#1 Tetrachloro-m-xylene
 R.T.: 4.921 min
 Delta R.T.: 0.000 min
 Response: 113164
 Conc: 1.99 ng/ml

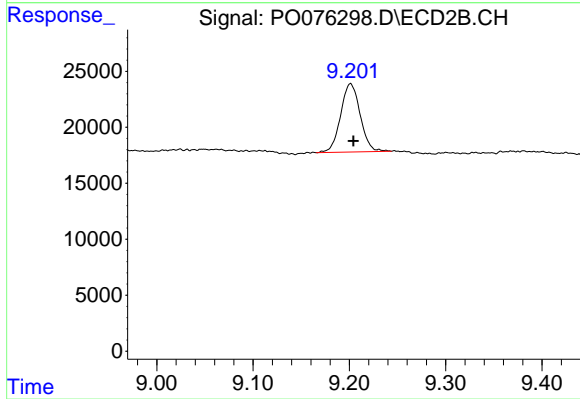
Instrument :
 ECD_O
 ClientSampleId :
 BC274626-1-1



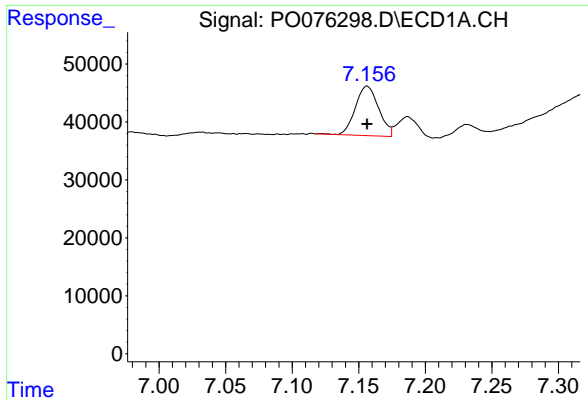
#1 Tetrachloro-m-xylene
 R.T.: 3.934 min
 Delta R.T.: -0.001 min
 Response: 85425
 Conc: 2.05 ng/ml



#2 Decachlorobiphenyl
 R.T.: 10.926 min
 Delta R.T.: 0.002 min
 Response: 96859
 Conc: 2.52 ng/ml

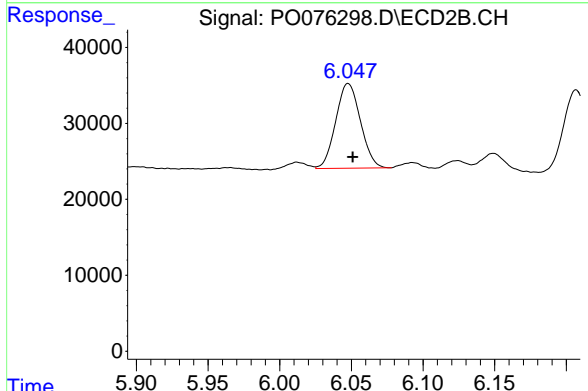


#2 Decachlorobiphenyl
 R.T.: 9.201 min
 Delta R.T.: -0.003 min
 Response: 85764
 Conc: 2.23 ng/ml

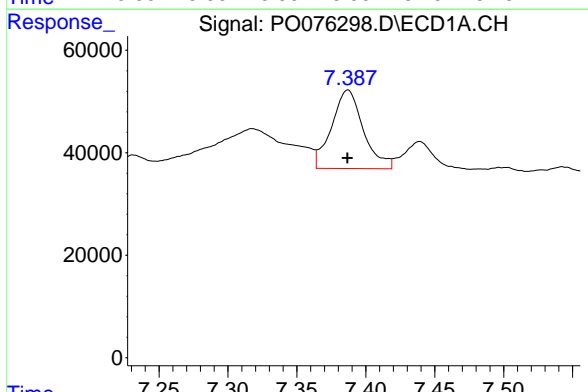


#26 AR-1254-1
 R.T.: 7.156 min
 Delta R.T.: 0.000 min
 Response: 103539
 Conc: 50.52 ng/ml

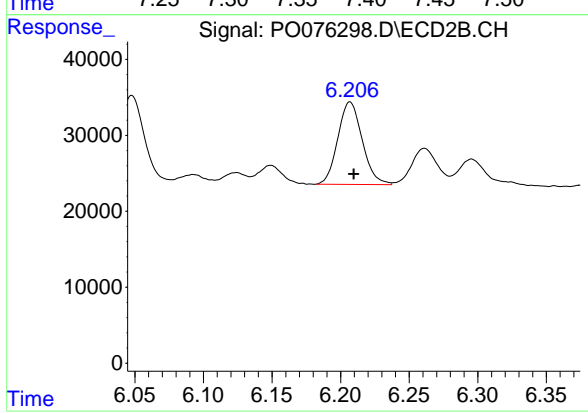
Instrument :
 ECD_O
 ClientSampleId :
 BC274626-1-1



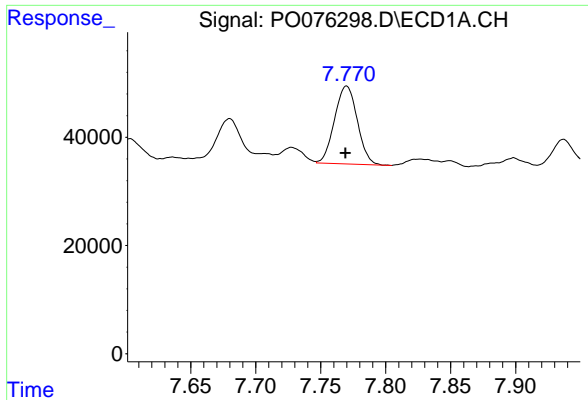
#26 AR-1254-1
 R.T.: 6.048 min
 Delta R.T.: -0.003 min
 Response: 133669
 Conc: 58.49 ng/ml



#27 AR-1254-2
 R.T.: 7.387 min
 Delta R.T.: 0.000 min
 Response: 245593
 Conc: 79.03 ng/ml



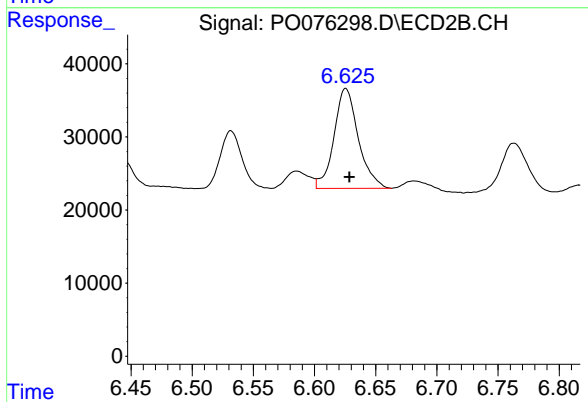
#27 AR-1254-2
 R.T.: 6.207 min
 Delta R.T.: -0.003 min
 Response: 134803
 Conc: 68.06 ng/ml



#28 AR-1254-3

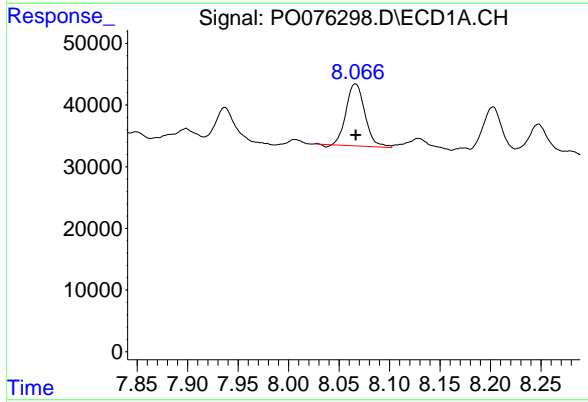
R.T.: 7.770 min
 Delta R.T.: 0.000 min
 Response: 175672
 Conc: 55.22 ng/ml

Instrument :
 ECD_O
 ClientSampleId :
 BC274626-1-1



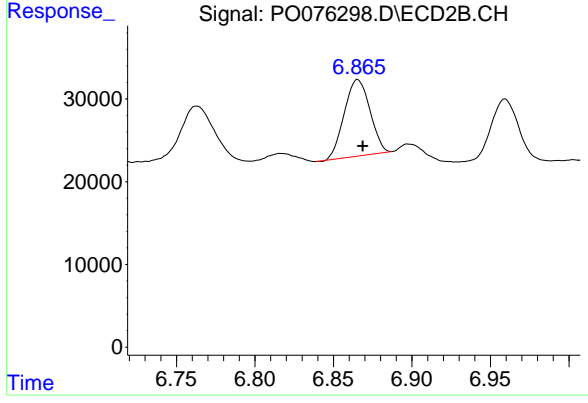
#28 AR-1254-3

R.T.: 6.626 min
 Delta R.T.: -0.003 min
 Response: 189575
 Conc: 62.94 ng/ml



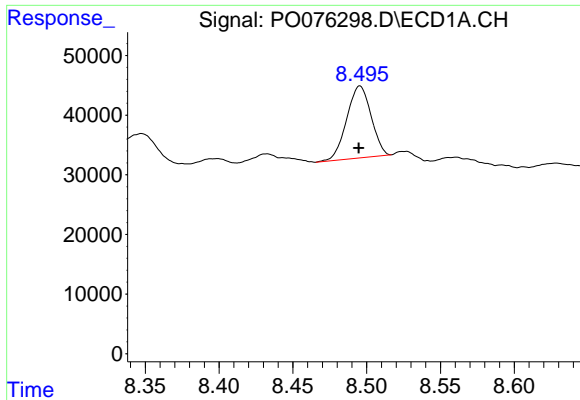
#29 AR-1254-4

R.T.: 8.066 min
 Delta R.T.: 0.000 min
 Response: 129751
 Conc: 61.93 ng/ml



#29 AR-1254-4

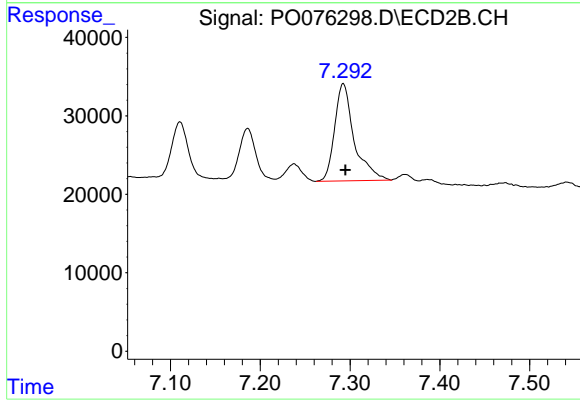
R.T.: 6.865 min
 Delta R.T.: -0.003 min
 Response: 105046
 Conc: 59.53 ng/ml



#30 AR-1254-5

R.T.: 8.495 min
Delta R.T.: 0.000 min
Response: 138307
Conc: 60.22 ng/ml

Instrument :
ECD_O
ClientSampled :
BC274626-1-1



#30 AR-1254-5

R.T.: 7.293 min
Delta R.T.: -0.002 min
Response: 187309
Conc: 71.54 ng/ml