

Data Path : Z:\pestpcbsrv\HPCHEM1\ECD_0\Data\P0031821\
 Data File : P0076311.D
 Signal(s) : Signal #1: ECD1A.CH Signal #2: ECD2B.CH
 Acq On : 18 Mar 2021 19:51
 Operator : DD\AJ
 Sample : M1712-07
 Misc :
 ALS Vial : 27 Sample Multiplier: 1

Instrument :
 ECD_0
ClientSampleId :
 RED-BRICK-2

Manual Integrations
APPROVED
 Ankita
 3/19/2021 2:35:42 PM

Integration File signal 1: autoint1.e
 Integration File signal 2: autoint2.e
 Quant Time: Mar 19 02:44:36 2021
 Quant Method : Z:\pestpcbsrv\HPCHEM1\ECD_0\methods\P0031521.M
 Quant Title : GC EXTRACTABLES
 QLast Update : Tue Mar 16 07:18:57 2021
 Response via : Initial Calibration
 Integrator: ChemStation 6890 Scale Mode: Small noise peaks clipped

Volume Inj. : 2 µl
 Signal #1 Phase : ZB-MR1 Signal #2 Phase: ZB-MR2
 Signal #1 Info : 30Mx0.32mmx 0.50µ Signal #2 Info : 30M x 0.32mm x 0.25µm

Compound	RT#1	RT#2	Resp#1	Resp#2	ng/ml	ng/ml

System Monitoring Compounds						
1) SA Tetrachlo...	4.921	3.934	1509243	1108904	26.567	26.579
2) SA Decachlor...	10.923	9.199	1162162	1105908	30.215	28.802
Target Compounds						
26) L6 AR-1254-1	7.157	6.048	19806	34974	9.664	15.303 #
27) L6 AR-1254-2	7.387	6.206	53622	22928	17.255	11.577m#
28) L6 AR-1254-3	7.768	6.625	52182	55056	16.402	18.279
29) L6 AR-1254-4	8.066	6.865	49220	35845	23.493	20.312
30) L6 AR-1254-5	8.498	7.291	213897	77611	93.133	29.644 #

(f)=RT Delta > 1/2 Window (#)=Amounts differ by > 25% (m)=manual int.

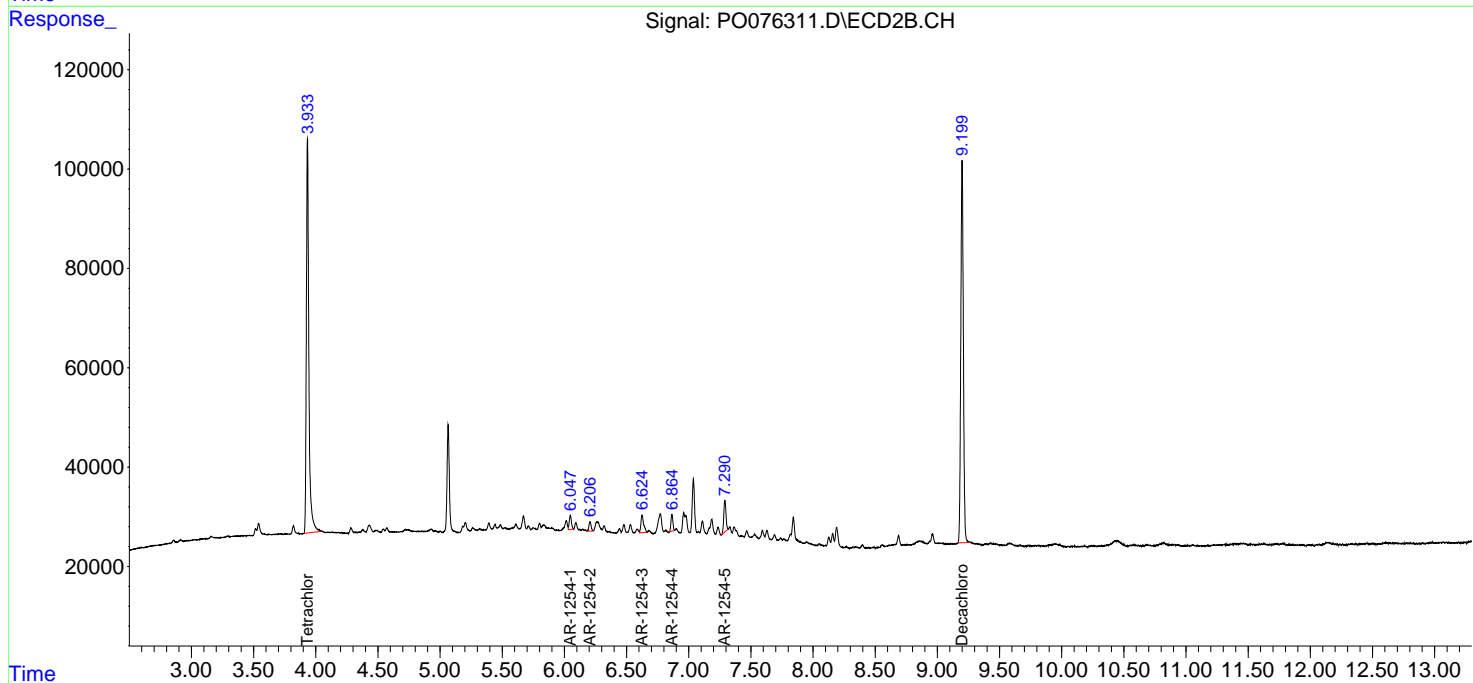
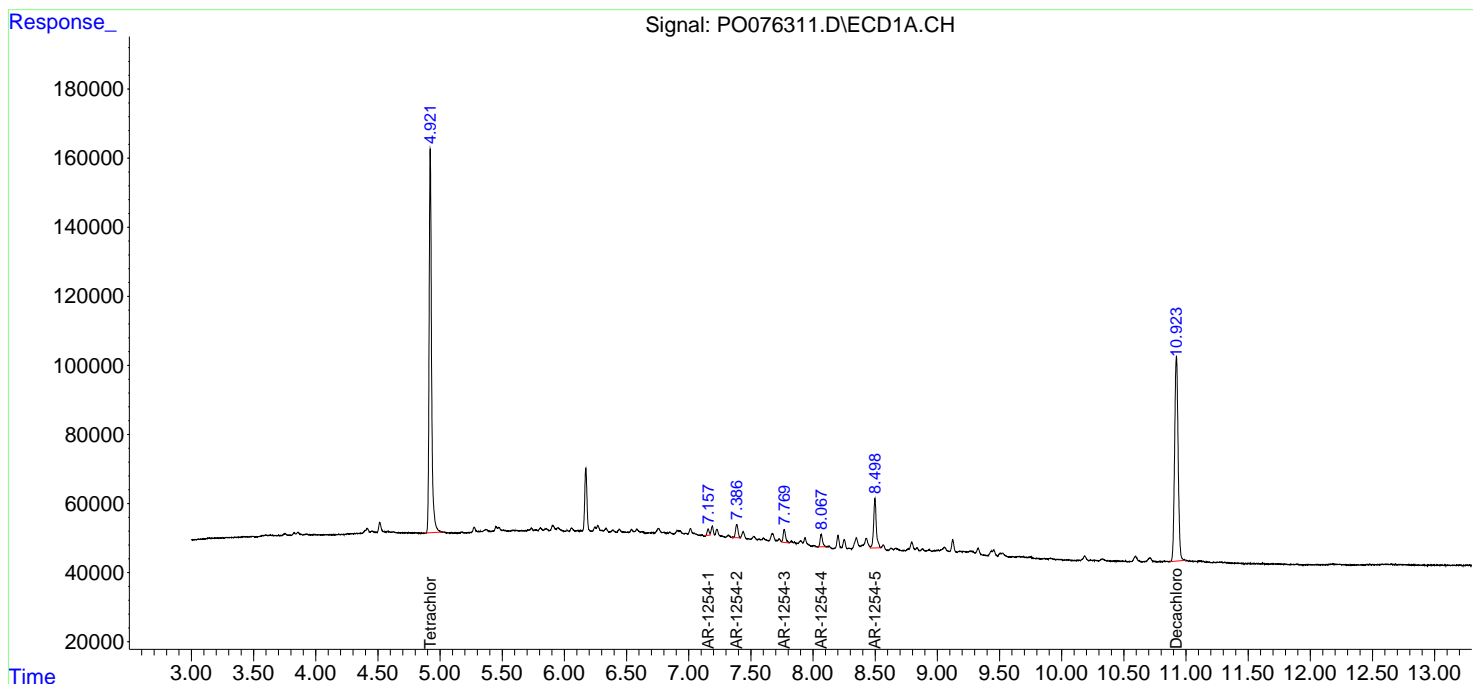
Data Path : Z:\pestpcbsrv\HPCHEM1\ECD_0\Data\P0031821\
 Data File : P0076311.D
 Signal(s) : Signal #1: ECD1A.CH Signal #2: ECD2B.CH
 Acq On : 18 Mar 2021 19:51
 Operator : DD\AJ
 Sample : M1712-07
 Misc :
 ALS Vial : 27 Sample Multiplier: 1

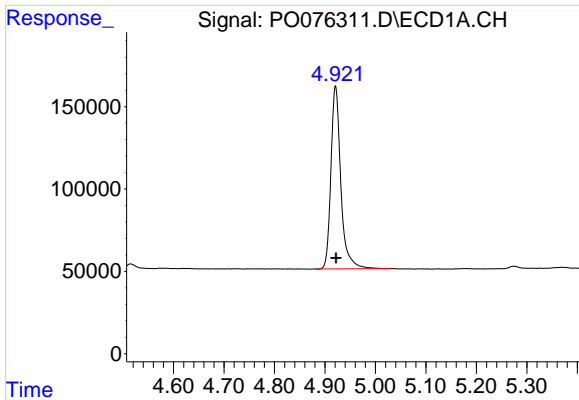
Instrument :
 ECD_O
Client Sampled :
 RED-BRICK-2

Manual Integrations
APPROVED
 Ankita
 3/19/2021 2:35:42 PM

Integration File signal 1: autoint1.e
 Integration File signal 2: autoint2.e
 Quant Time: Mar 19 02:44:36 2021
 Quant Method : Z:\pestpcbsrv\HPCHEM1\ECD_0\methods\P0031521.M
 Quant Title : GC EXTRACTABLES
 QLast Update : Tue Mar 16 07:18:57 2021
 Response via : Initial Calibration
 Integrator: ChemStation 6890 Scale Mode: Small noise peaks clipped

Volume Inj. : 2 µl
 Signal #1 Phase : ZB-MR1 Signal #2 Phase: ZB-MR2
 Signal #1 Info : 30Mx0.32mmx 0.50µ Signal #2 Info : 30M x 0.32mm x 0.25µm

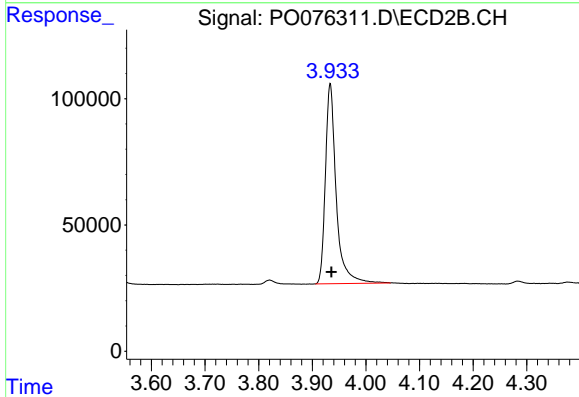




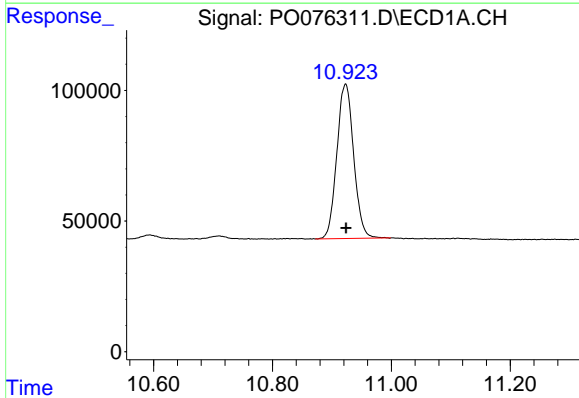
#1 Tetrachloro-m-xylene
 R.T.: 4.921 min
 Delta R.T.: -0.001 min
 Response: 1509243
 Conc: 26.57 ng/ml

Instrument :
 ECD_O
 ClientSampled :
 RED-BRICK-2

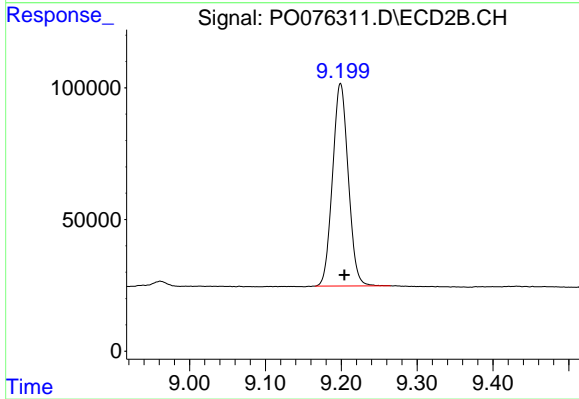
Manual Integrations
APPROVED
 Ankita
 3/19/2021 2:35:42 PM



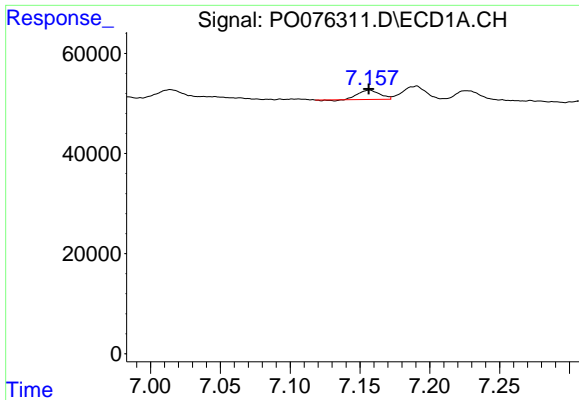
#1 Tetrachloro-m-xylene
 R.T.: 3.934 min
 Delta R.T.: -0.002 min
 Response: 1108904
 Conc: 26.58 ng/ml



#2 Decachlorobiphenyl
 R.T.: 10.923 min
 Delta R.T.: 0.000 min
 Response: 1162162
 Conc: 30.21 ng/ml



#2 Decachlorobiphenyl
 R.T.: 9.199 min
 Delta R.T.: -0.005 min
 Response: 1105908
 Conc: 28.80 ng/ml

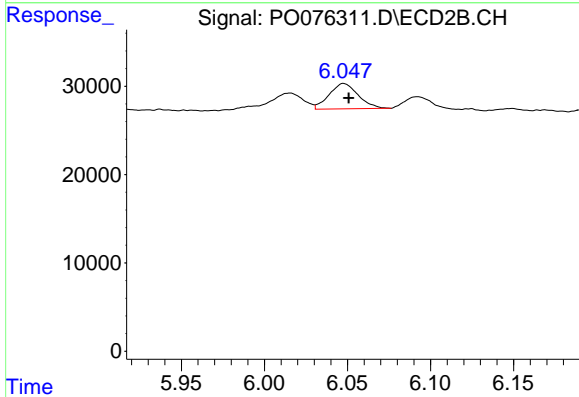


#26 AR-1254-1

R.T.: 7.157 min
 Delta R.T.: 0.000 min
 Response: 19806
 Conc: 9.66 ng/ml

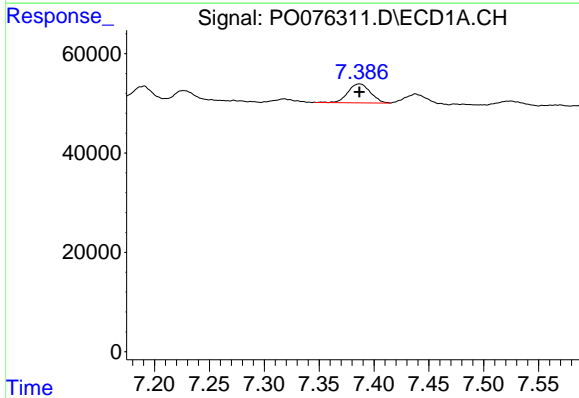
Instrument :
 ECD_O
 ClientSampleId :
 RED-BRICK-2

Manual Integrations
APPROVED
 Ankita
 3/19/2021 2:35:42 PM



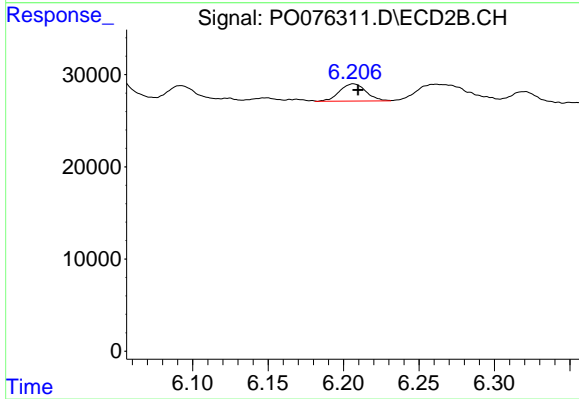
#26 AR-1254-1

R.T.: 6.048 min
 Delta R.T.: -0.003 min
 Response: 34974
 Conc: 15.30 ng/ml



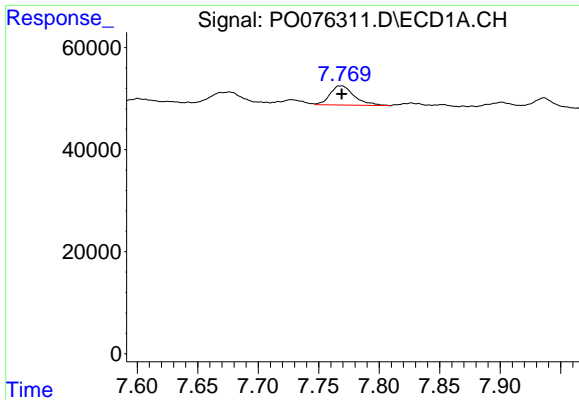
#27 AR-1254-2

R.T.: 7.387 min
 Delta R.T.: 0.000 min
 Response: 53622
 Conc: 17.26 ng/ml



#27 AR-1254-2

R.T.: 6.206 min
 Delta R.T.: -0.004 min
 Response: 22928
 Conc: 11.58 ng/ml m

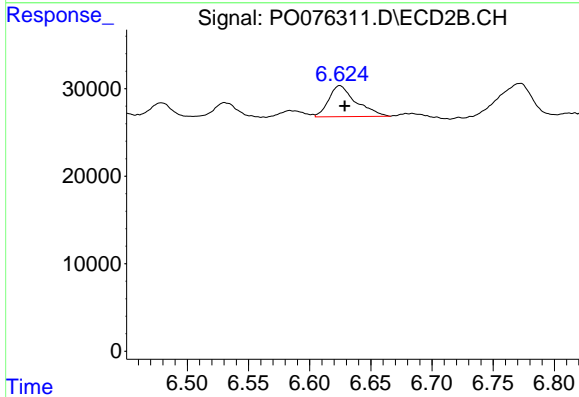


#28 AR-1254-3

R.T.: 7.768 min
 Delta R.T.: 0.000 min
 Response: 52182
 Conc: 16.40 ng/ml

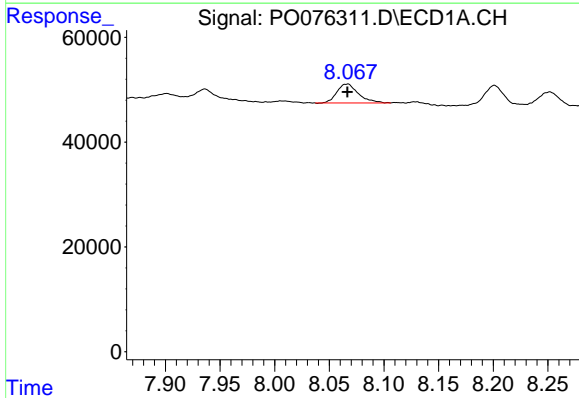
Instrument :
 ECD_O
ClientSampled :
 RED-BRICK-2

Manual Integrations
APPROVED
 Ankita
 3/19/2021 2:35:42 PM



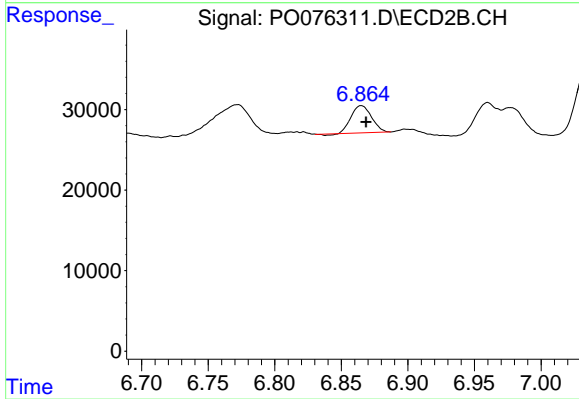
#28 AR-1254-3

R.T.: 6.625 min
 Delta R.T.: -0.004 min
 Response: 55056
 Conc: 18.28 ng/ml



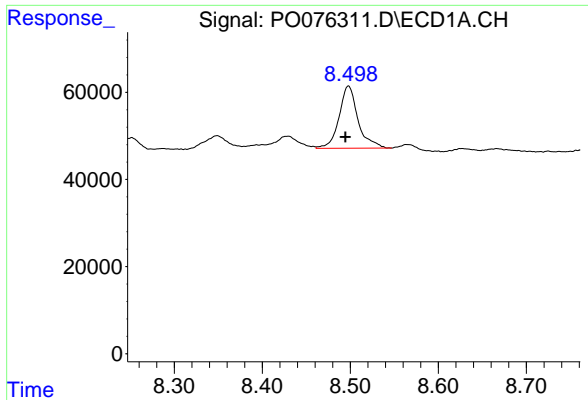
#29 AR-1254-4

R.T.: 8.066 min
 Delta R.T.: 0.000 min
 Response: 49220
 Conc: 23.49 ng/ml



#29 AR-1254-4

R.T.: 6.865 min
 Delta R.T.: -0.004 min
 Response: 35845
 Conc: 20.31 ng/ml



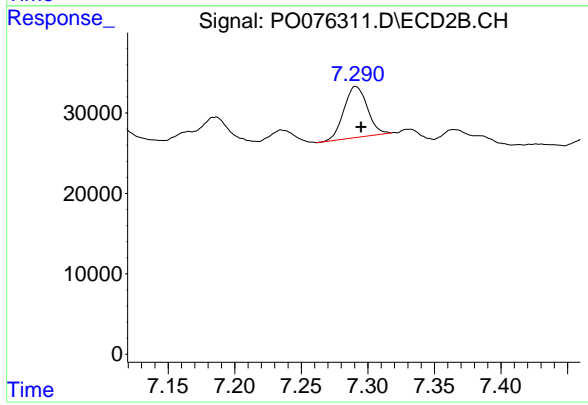
#30 AR-1254-5

R.T.: 8.498 min
Delta R.T.: 0.003 min
Response: 213897
Conc: 93.13 ng/ml

Instrument :
ECD_O
ClientSampled :
RED-BRICK-2

Manual Integrations
APPROVED

Ankita
3/19/2021 2:35:42 PM



#30 AR-1254-5

R.T.: 7.291 min
Delta R.T.: -0.004 min
Response: 77611
Conc: 29.64 ng/ml