

Data Path : Z:\pestpcbsrv\HPCHEM1\ECD_0\Data\P0031821\
 Data File : P0076318.D
 Signal(s) : Signal #1: ECD1A.CH Signal #2: ECD2B.CH
 Acq On : 18 Mar 2021 22:25
 Operator : DD\AJ
 Sample : AR1254CCC500
 Misc :
 ALS Vial : 6 Sample Multiplier: 1

Instrument :
 ECD_0
 ClientSampleId :
 AR1254CCC500

Integration File signal 1: autoint1.e
 Integration File signal 2: autoint2.e
 Quant Time: Mar 19 08:53:07 2021
 Quant Method : Z:\pestpcbsrv\HPCHEM1\ECD_0\methods\P0031521.M
 Quant Title : GC EXTRACTABLES
 QLast Update : Tue Mar 16 07:18:57 2021
 Response via : Initial Calibration
 Integrator: ChemStation 6890 Scale Mode: Small noise peaks clipped

Volume Inj. : 2 µl
 Signal #1 Phase : ZB-MR1 Signal #2 Phase: ZB-MR2
 Signal #1 Info : 30Mx0.32mmx 0.50µ Signal #2 Info : 30M x 0.32mm x 0.25µm

| Compound | RT#1 | RT#2 | Resp#1 | Resp#2 | ng/ml | ng/ml |
|-----------------------------|--------|-------|---------|---------|---------|---------|
| ----- | | | | | | |
| System Monitoring Compounds | | | | | | |
| 1) SA Tetrachlo... | 4.922 | 3.934 | 3145799 | 2245478 | 55.375 | 53.821 |
| 2) SA Decachlor... | 10.923 | 9.200 | 2306077 | 2118383 | 59.955 | 55.170 |
| Target Compounds | | | | | | |
| 26) L6 AR-1254-1 | 7.156 | 6.047 | 1108078 | 1211570 | 540.684 | 530.109 |
| 27) L6 AR-1254-2 | 7.387 | 6.207 | 1727876 | 1069958 | 556.025 | 540.233 |
| 28) L6 AR-1254-3 | 7.769 | 6.625 | 1763064 | 1649323 | 554.174 | 547.578 |
| 29) L6 AR-1254-4 | 8.066 | 6.866 | 1174962 | 984460 | 560.802 | 557.867 |
| 30) L6 AR-1254-5 | 8.494 | 7.292 | 1286901 | 1472730 | 560.332 | 562.525 |
| ----- | | | | | | |

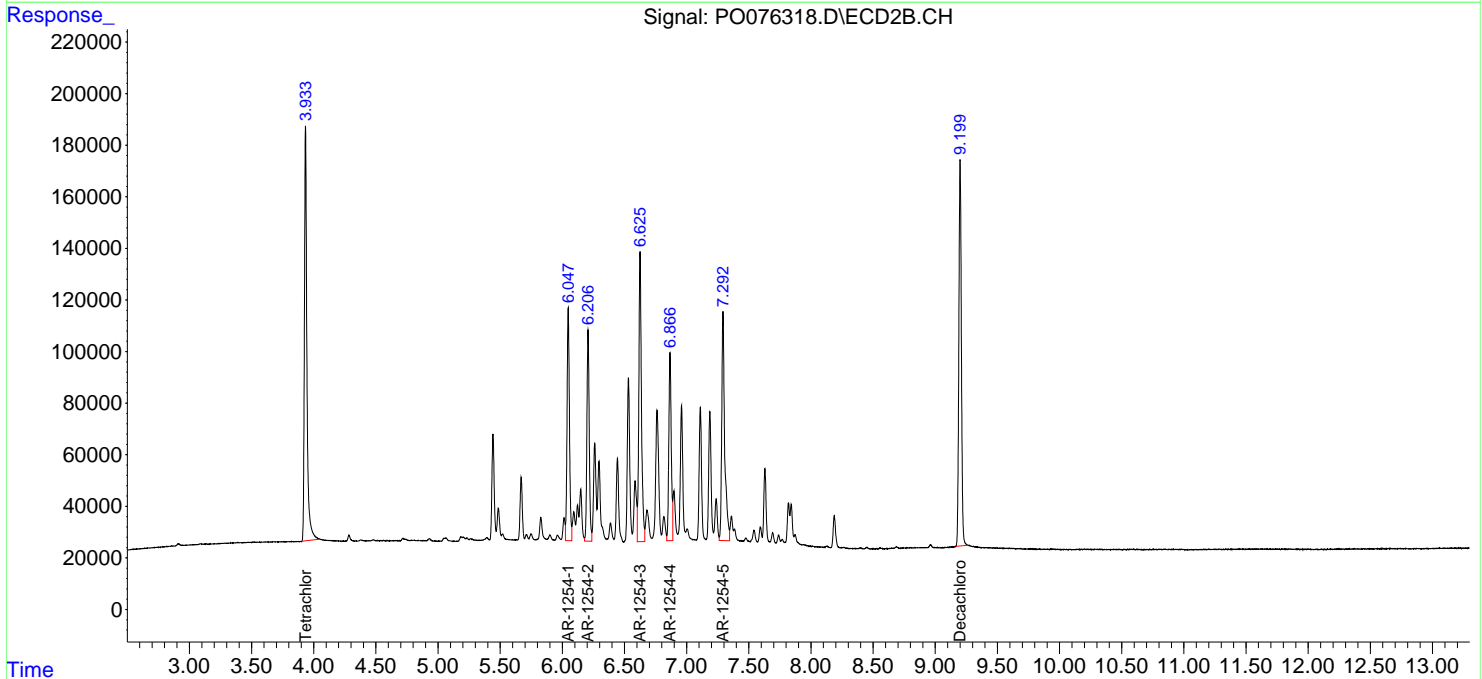
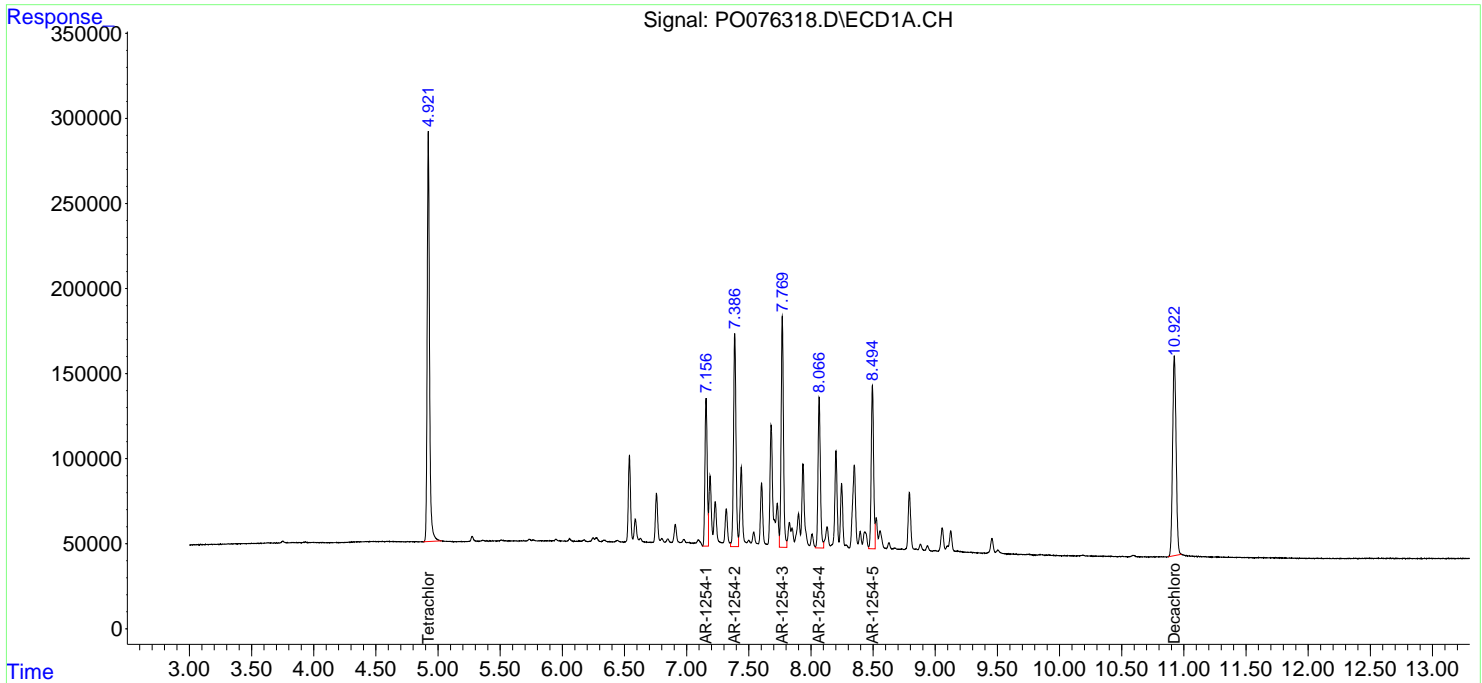
(f)=RT Delta > 1/2 Window (#)=Amounts differ by > 25% (m)=manual int.

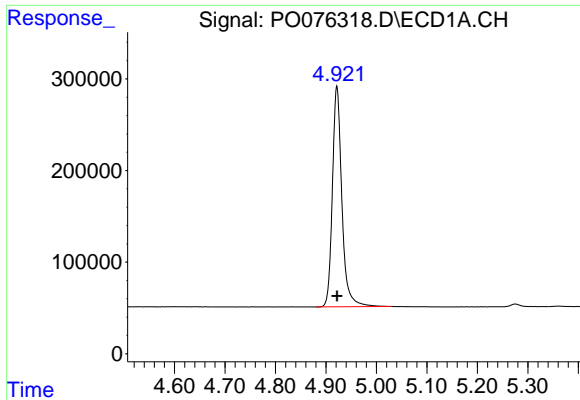
Data Path : Z:\pestpcbsrv\HPCHEM1\ECD_0\Data\P0031821\
 Data File : P0076318.D
 Signal(s) : Signal #1: ECD1A.CH Signal #2: ECD2B.CH
 Acq On : 18 Mar 2021 22:25
 Operator : DD\AJ
 Sample : AR1254CCC500
 Misc :
 ALS Vial : 6 Sample Multiplier: 1

Instrument :
 ECD_O
Client Sampled :
 AR1254CCC500

Integration File signal 1: autoint1.e
 Integration File signal 2: autoint2.e
 Quant Time: Mar 19 08:53:07 2021
 Quant Method : Z:\pestpcbsrv\HPCHEM1\ECD_0\methods\P0031521.M
 Quant Title : GC EXTRACTABLES
 QLast Update : Tue Mar 16 07:18:57 2021
 Response via : Initial Calibration
 Integrator: ChemStation 6890 Scale Mode: Small noise peaks clipped

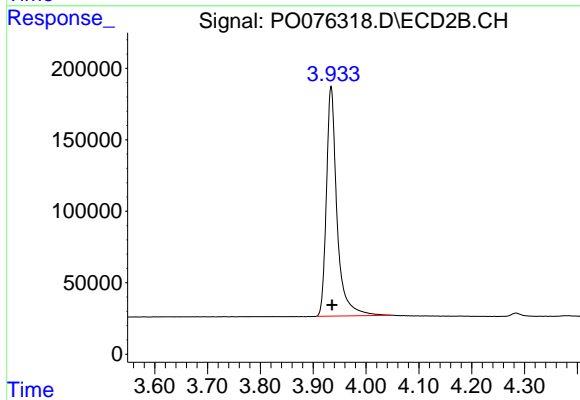
Volume Inj. : 2 µl
 Signal #1 Phase : ZB-MR1 Signal #2 Phase: ZB-MR2
 Signal #1 Info : 30Mx0.32mmx 0.50µ Signal #2 Info : 30M x 0.32mm x 0.25µm



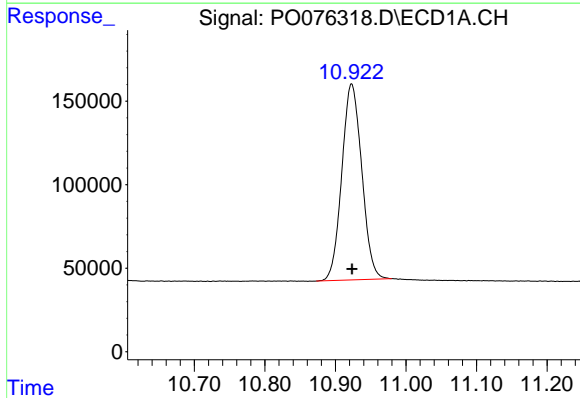


#1 Tetrachloro-m-xylene
 R.T.: 4.922 min
 Delta R.T.: 0.000 min
 Response: 3145799
 Conc: 55.37 ng/ml

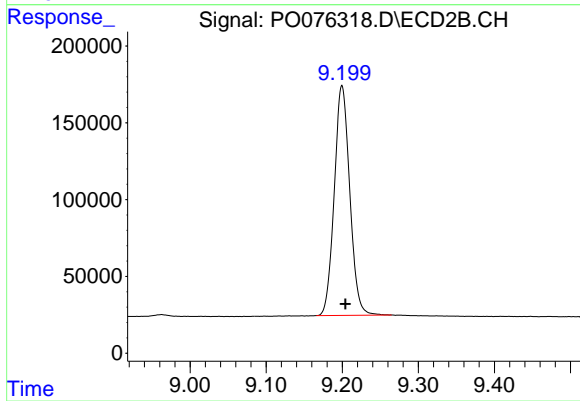
Instrument :
 ECD_O
 ClientSampleId :
 AR1254CCC500



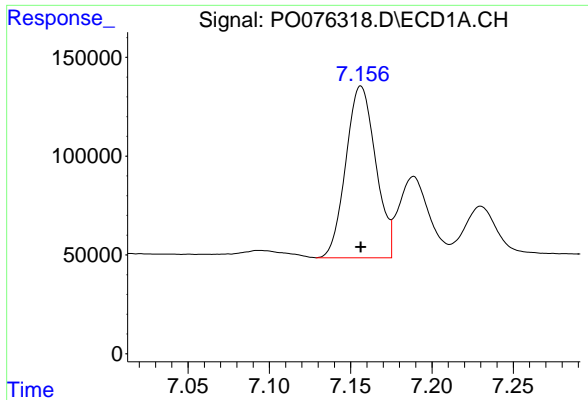
#1 Tetrachloro-m-xylene
 R.T.: 3.934 min
 Delta R.T.: -0.002 min
 Response: 2245478
 Conc: 53.82 ng/ml



#2 Decachlorobiphenyl
 R.T.: 10.923 min
 Delta R.T.: 0.000 min
 Response: 2306077
 Conc: 59.95 ng/ml



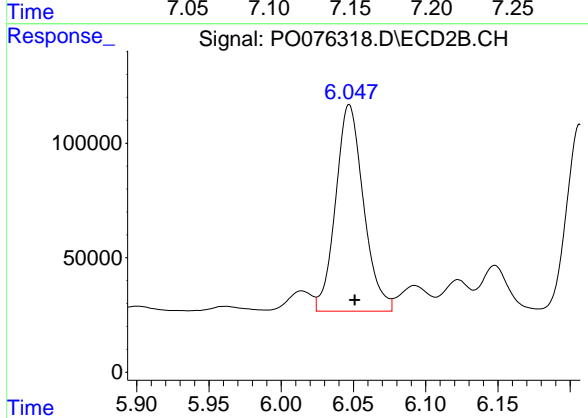
#2 Decachlorobiphenyl
 R.T.: 9.200 min
 Delta R.T.: -0.004 min
 Response: 2118383
 Conc: 55.17 ng/ml



#26 AR-1254-1

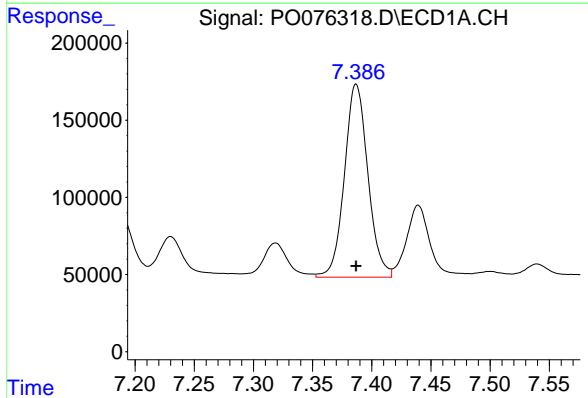
R.T.: 7.156 min
Delta R.T.: 0.000 min
Response: 1108078
Conc: 540.68 ng/ml

Instrument :
ECD_O
ClientSampleId :
AR1254CCC500



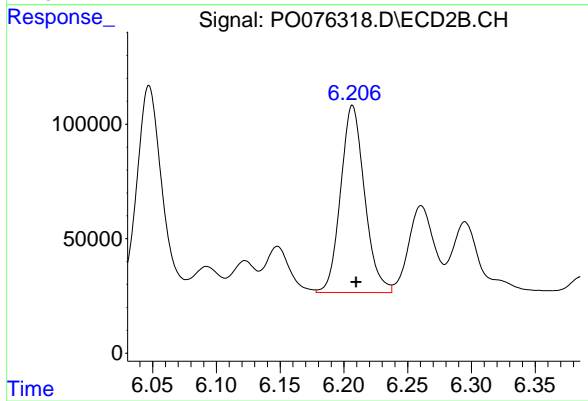
#26 AR-1254-1

R.T.: 6.047 min
Delta R.T.: -0.004 min
Response: 1211570
Conc: 530.11 ng/ml



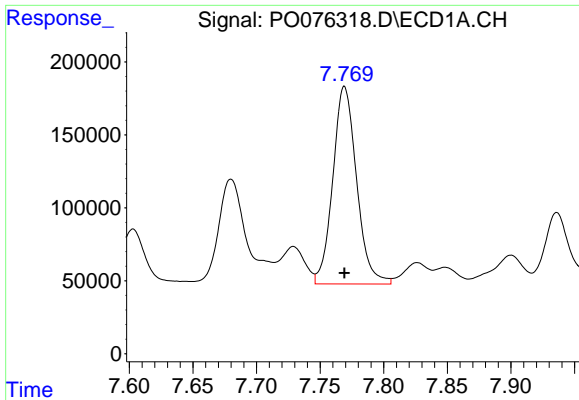
#27 AR-1254-2

R.T.: 7.387 min
Delta R.T.: 0.000 min
Response: 1727876
Conc: 556.02 ng/ml



#27 AR-1254-2

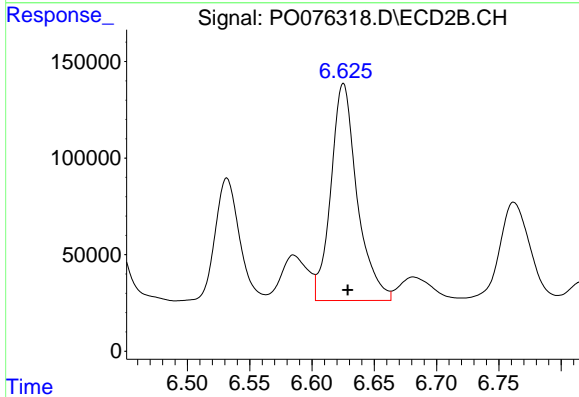
R.T.: 6.207 min
Delta R.T.: -0.003 min
Response: 1069958
Conc: 540.23 ng/ml



#28 AR-1254-3

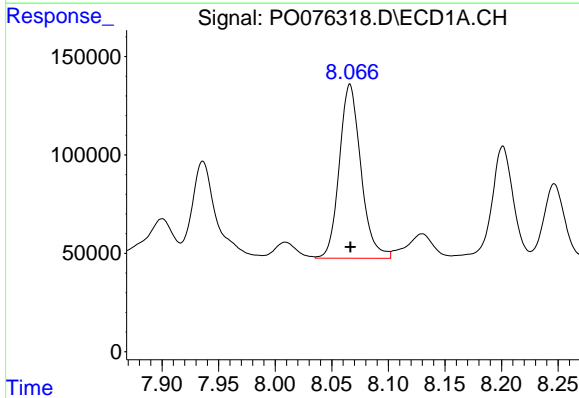
R.T.: 7.769 min
 Delta R.T.: 0.000 min
 Response: 1763064
 Conc: 554.17 ng/ml

Instrument :
 ECD_O
 ClientSampleId :
 AR1254CCC500



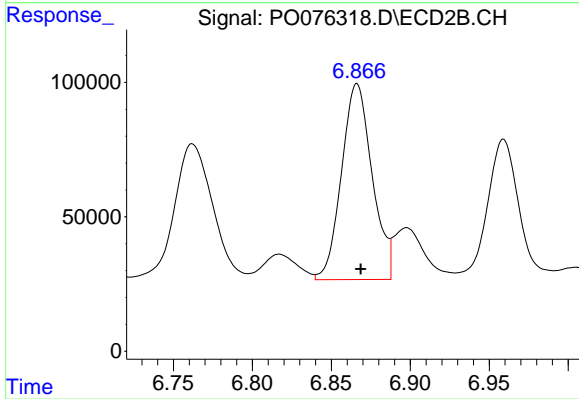
#28 AR-1254-3

R.T.: 6.625 min
 Delta R.T.: -0.003 min
 Response: 1649323
 Conc: 547.58 ng/ml



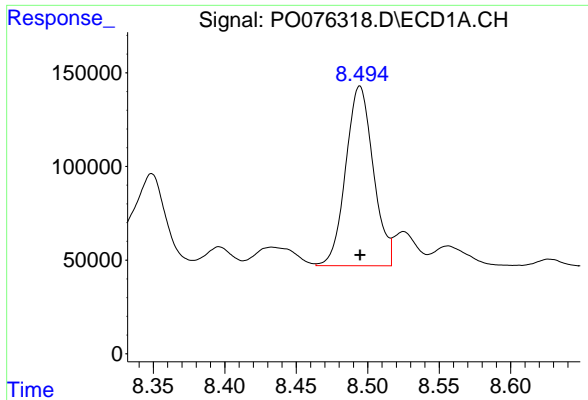
#29 AR-1254-4

R.T.: 8.066 min
 Delta R.T.: 0.000 min
 Response: 1174962
 Conc: 560.80 ng/ml



#29 AR-1254-4

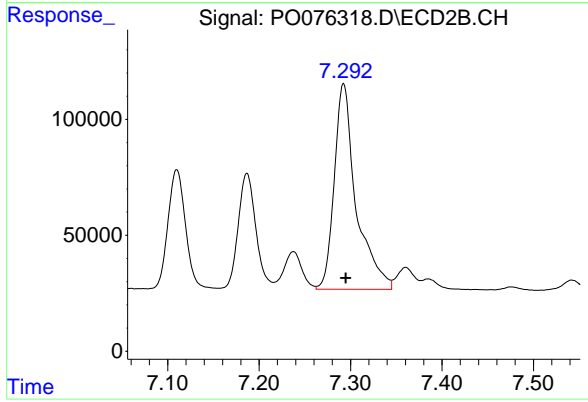
R.T.: 6.866 min
 Delta R.T.: -0.002 min
 Response: 984460
 Conc: 557.87 ng/ml



#30 AR-1254-5

R.T.: 8.494 min
 Delta R.T.: 0.000 min
 Response: 1286901
 Conc: 560.33 ng/ml

Instrument :
 ECD_O
 ClientSampleId :
 AR1254CCC500



#30 AR-1254-5

R.T.: 7.292 min
 Delta R.T.: -0.003 min
 Response: 1472730
 Conc: 562.52 ng/ml