

Data Path : Z:\pestpcbsrv\HPCHEM1\ECD_0\Data\P0031821\
 Data File : P0076320.D
 Signal(s) : Signal #1: ECD1A.CH Signal #2: ECD2B.CH
 Acq On : 18 Mar 2021 23:00
 Operator : DD\AJ
 Sample : M1708-01 10X
 Misc :
 ALS Vial : 31 Sample Multiplier: 1

Instrument :
 ECD_0
 ClientSampleId :
 31431

Integration File signal 1: autoint1.e
 Integration File signal 2: autoint2.e
 Quant Time: Mar 19 02:47:51 2021
 Quant Method : Z:\pestpcbsrv\HPCHEM1\ECD_0\methods\P0031521.M
 Quant Title : GC EXTRACTABLES
 QLast Update : Tue Mar 16 07:18:57 2021
 Response via : Initial Calibration
 Integrator: ChemStation 6890 Scale Mode: Small noise peaks clipped

Volume Inj. : 2 µl
 Signal #1 Phase : ZB-MR1 Signal #2 Phase: ZB-MR2
 Signal #1 Info : 30Mx0.32mmx 0.50µ Signal #2 Info : 30M x 0.32mm x 0.25µm

Compound	RT#1	RT#2	Resp#1	Resp#2	ng/ml	ng/ml

System Monitoring Compounds						
1) SA Tetrachlo...	4.922	3.934	146433	110135	2.578	2.640
2) SA Decachlor...	10.926	9.203	113987	118150	2.963	3.077

Target Compounds

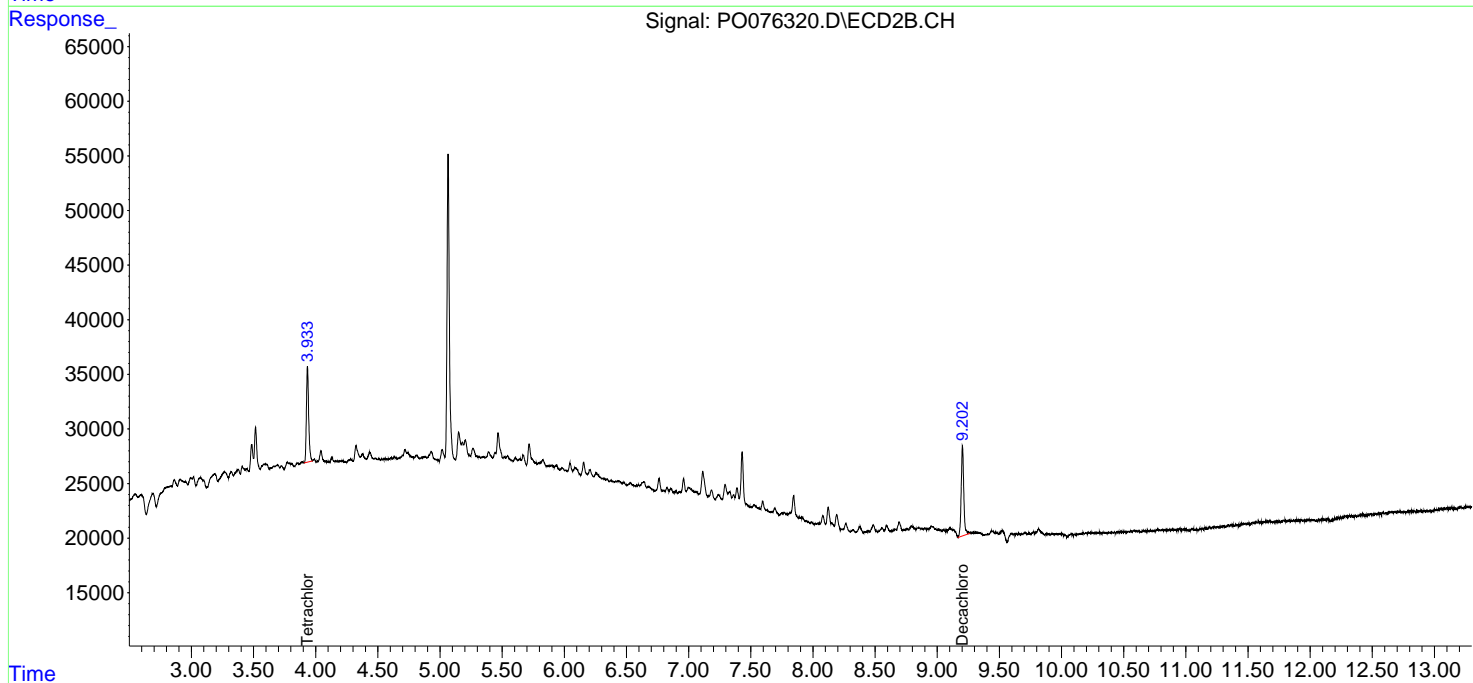
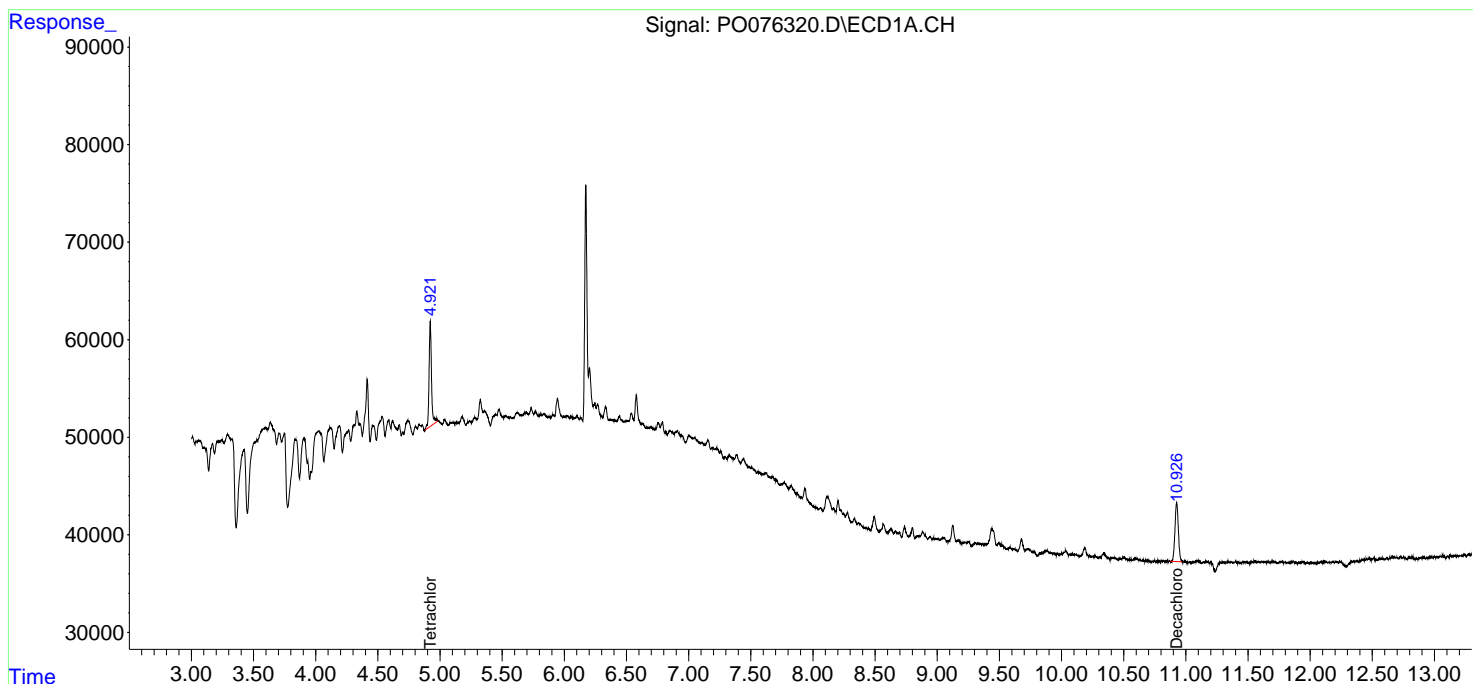
(f)=RT Delta > 1/2 Window (#)=Amounts differ by > 25% (m)=manual int.

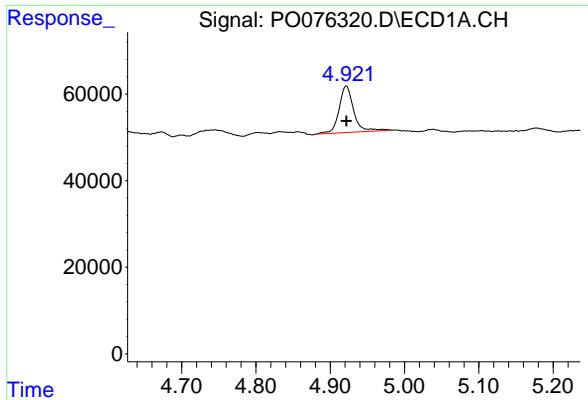
Data Path : Z:\pestpcbsrv\HPCHEM1\ECD_O\Data\P0031821\
 Data File : P0076320.D
 Signal(s) : Signal #1: ECD1A.CH Signal #2: ECD2B.CH
 Acq On : 18 Mar 2021 23:00
 Operator : DD\AJ
 Sample : M1708-01 10X
 Misc :
 ALS Vial : 31 Sample Multiplier: 1

Instrument :
 ECD_O
 ClientSampleId :
 31431

Integration File signal 1: autoint1.e
 Integration File signal 2: autoint2.e
 Quant Time: Mar 19 02:47:51 2021
 Quant Method : Z:\pestpcbsrv\HPCHEM1\ECD_O\methods\P0031521.M
 Quant Title : GC EXTRACTABLES
 QLast Update : Tue Mar 16 07:18:57 2021
 Response via : Initial Calibration
 Integrator: ChemStation 6890 Scale Mode: Small noise peaks clipped

Volume Inj. : 2 µl
 Signal #1 Phase : ZB-MR1 Signal #2 Phase: ZB-MR2
 Signal #1 Info : 30Mx0.32mmx 0.50µ Signal #2 Info : 30M x 0.32mm x 0.25µm

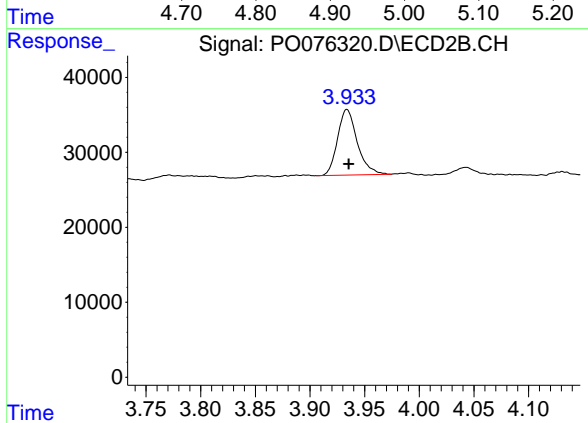




#1 Tetrachloro-m-xylene

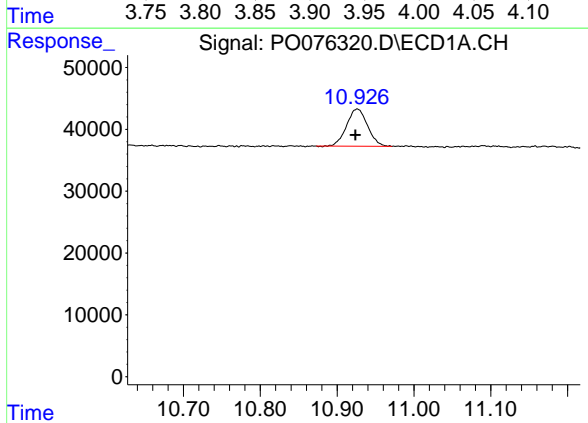
R.T.: 4.922 min
 Delta R.T.: 0.000 min
 Response: 146433
 Conc: 2.58 ng/ml

Instrument :
 ECD_O
 ClientSampleId :
 31431



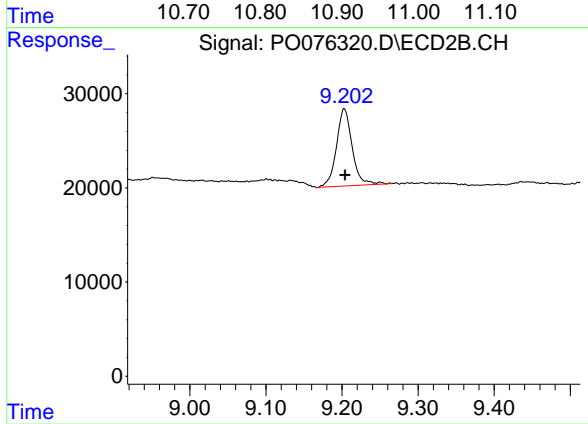
#1 Tetrachloro-m-xylene

R.T.: 3.934 min
 Delta R.T.: -0.002 min
 Response: 110135
 Conc: 2.64 ng/ml



#2 Decachlorobiphenyl

R.T.: 10.926 min
 Delta R.T.: 0.002 min
 Response: 113987
 Conc: 2.96 ng/ml



#2 Decachlorobiphenyl

R.T.: 9.203 min
 Delta R.T.: -0.001 min
 Response: 118150
 Conc: 3.08 ng/ml