

Data Path : Z:\pestpcbsrv\HPCHEM1\ECD\_0\Data\P0031821\  
 Data File : P0076326.D  
 Signal(s) : Signal #1: ECD1A.CH Signal #2: ECD2B.CH  
 Acq On : 19 Mar 2021 00:43  
 Operator : DD\AJ  
 Sample : M1712-15  
 Misc :  
 ALS Vial : 37 Sample Multiplier: 1

**Instrument :**  
 ECD\_0  
**Client Sampled :**  
 YELLOW-WALL-2

**Manual Integrations**  
**APPROVED**  
 Ankita  
 3/19/2021 2:35:52 PM

Integration File signal 1: autoint1.e  
 Integration File signal 2: autoint2.e  
 Quant Time: Mar 19 02:50:27 2021  
 Quant Method : Z:\pestpcbsrv\HPCHEM1\ECD\_0\methods\P0031521.M  
 Quant Title : GC EXTRACTABLES  
 QLast Update : Tue Mar 16 07:18:57 2021  
 Response via : Initial Calibration  
 Integrator: ChemStation 6890 Scale Mode: Small noise peaks clipped

Volume Inj. : 2 µl  
 Signal #1 Phase : ZB-MR1 Signal #2 Phase: ZB-MR2  
 Signal #1 Info : 30Mx0.32mmx 0.50µ Signal #2 Info : 30M x 0.32mm x 0.25µm

Compound	RT#1	RT#2	Resp#1	Resp#2	ng/ml	ng/ml
-----						
System Monitoring Compounds						
1) SA Tetrachlo...	4.921	3.933	1434584	1038716	25.253	24.897
2) SA Decachlor...	10.922	9.200	1028279	928964	26.734	24.193
Target Compounds						
26) L6 AR-1254-1	7.157	6.047	21852	40238	10.662	17.606 #
27) L6 AR-1254-2	7.387	6.206	62390	30369	20.077	15.334
28) L6 AR-1254-3	7.768	6.625	94219	92485	29.615	30.705
29) L6 AR-1254-4	8.065	6.864	77085	80365	36.792	45.541m
30) L6 AR-1254-5	8.497	7.291	255384	175547	111.197	67.052 #
-----						

(f)=RT Delta > 1/2 Window (#)=Amounts differ by > 25% (m)=manual int.

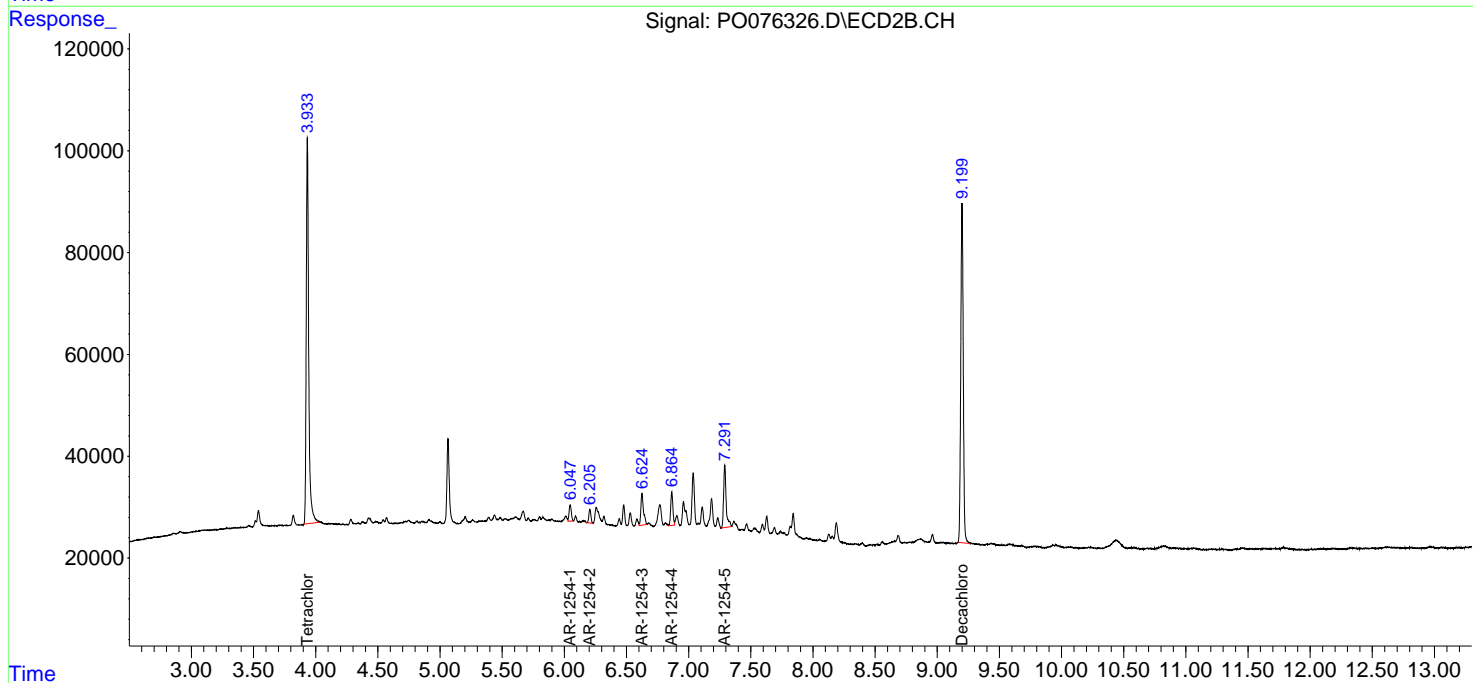
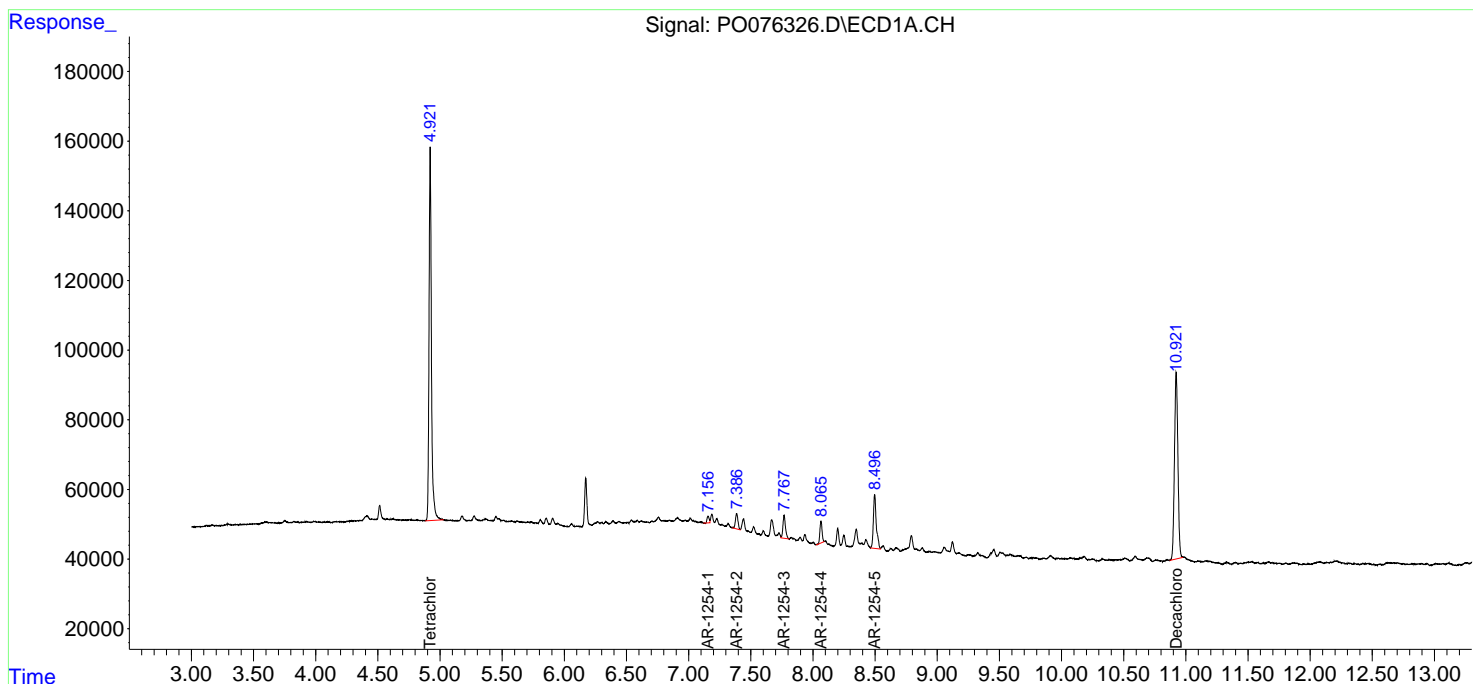
Data Path : Z:\pestpcbsrv\HPCHEM1\ECD\_0\Data\P0031821\  
 Data File : P0076326.D  
 Signal(s) : Signal #1: ECD1A.CH Signal #2: ECD2B.CH  
 Acq On : 19 Mar 2021 00:43  
 Operator : DD\AJ  
 Sample : M1712-15  
 Misc :  
 ALS Vial : 37 Sample Multiplier: 1

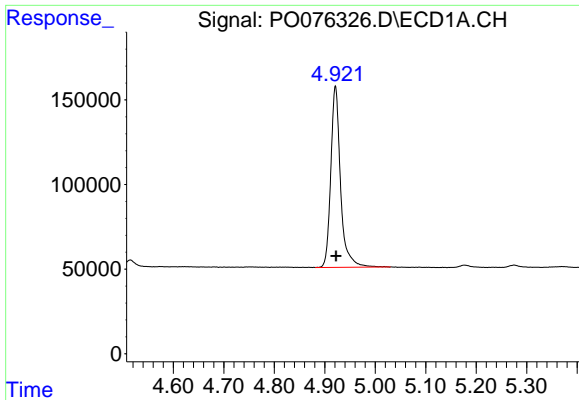
**Instrument :**  
 ECD\_O  
**Client Sampled :**  
 YELLOW-WALL-2

**Manual Integrations**  
**APPROVED**  
 Ankita  
 3/19/2021 2:35:52 PM

Integration File signal 1: autoint1.e  
 Integration File signal 2: autoint2.e  
 Quant Time: Mar 19 02:50:27 2021  
 Quant Method : Z:\pestpcbsrv\HPCHEM1\ECD\_0\methods\P0031521.M  
 Quant Title : GC EXTRACTABLES  
 QLast Update : Tue Mar 16 07:18:57 2021  
 Response via : Initial Calibration  
 Integrator: ChemStation 6890 Scale Mode: Small noise peaks clipped

Volume Inj. : 2 µl  
 Signal #1 Phase : ZB-MR1 Signal #2 Phase: ZB-MR2  
 Signal #1 Info : 30Mx0.32mmx 0.50µ Signal #2 Info : 30M x 0.32mm x 0.25µm





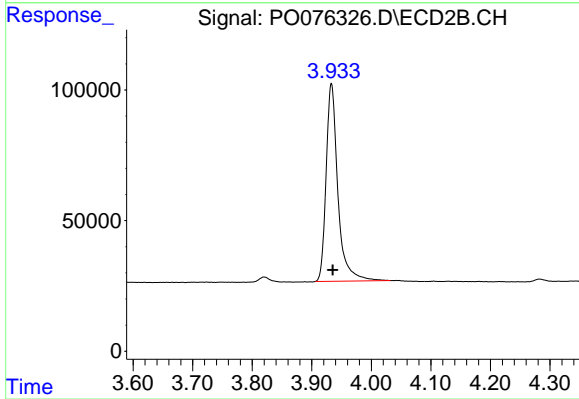
#1 Tetrachloro-m-xylene

R.T.: 4.921 min  
 Delta R.T.: 0.000 min  
 Response: 1434584  
 Conc: 25.25 ng/ml

Instrument :  
 ECD\_O  
 ClientSampleId :  
 YELLOW-WALL-2

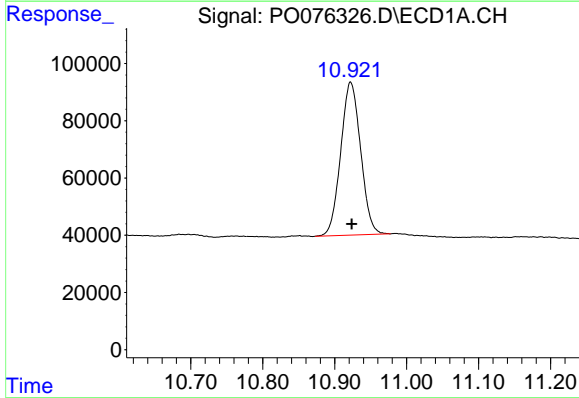
Manual Integrations  
 APPROVED

Ankita  
 3/19/2021 2:35:52 PM



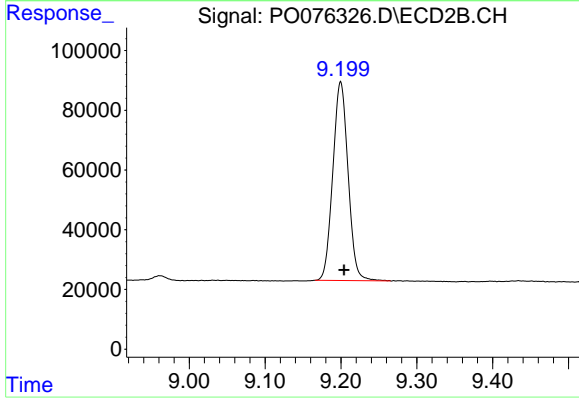
#1 Tetrachloro-m-xylene

R.T.: 3.933 min  
 Delta R.T.: -0.002 min  
 Response: 1038716  
 Conc: 24.90 ng/ml



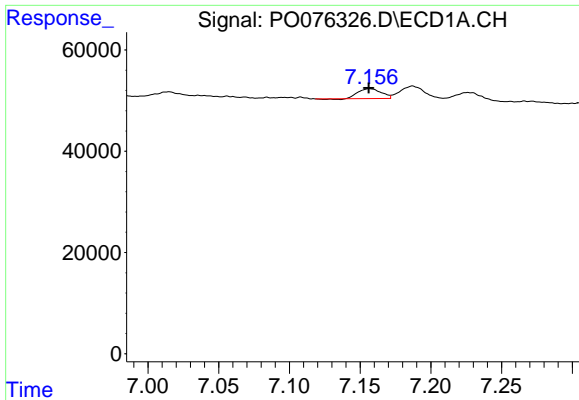
#2 Decachlorobiphenyl

R.T.: 10.922 min  
 Delta R.T.: -0.001 min  
 Response: 1028279  
 Conc: 26.73 ng/ml



#2 Decachlorobiphenyl

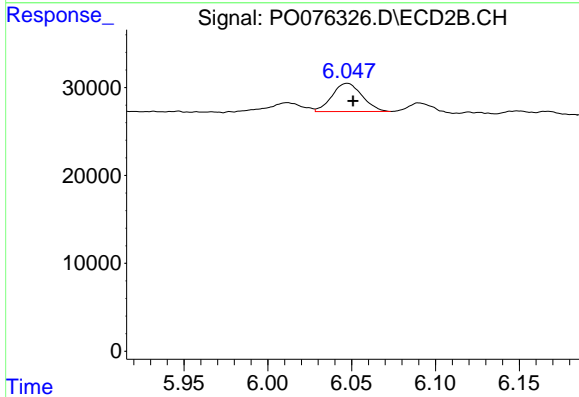
R.T.: 9.200 min  
 Delta R.T.: -0.005 min  
 Response: 928964  
 Conc: 24.19 ng/ml



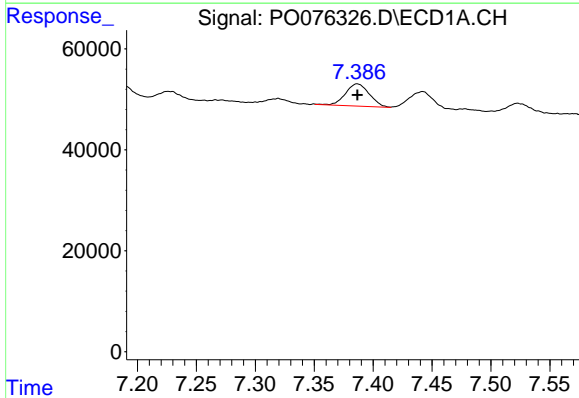
#26 AR-1254-1  
 R.T.: 7.157 min  
 Delta R.T.: 0.000 min  
 Response: 21852  
 Conc: 10.66 ng/ml

**Instrument :**  
 ECD\_O  
**ClientSampleId :**  
 YELLOW-WALL-2

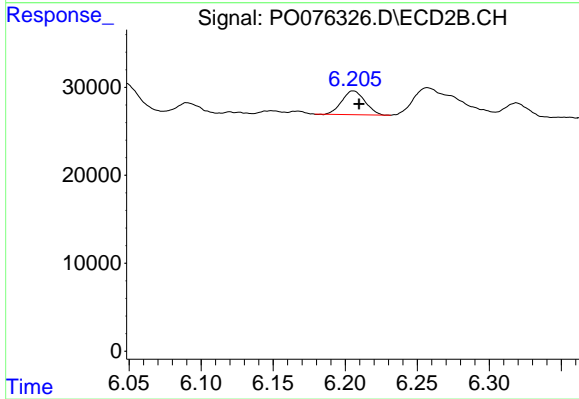
**Manual Integrations**  
**APPROVED**  
 Ankita  
 3/19/2021 2:35:52 PM



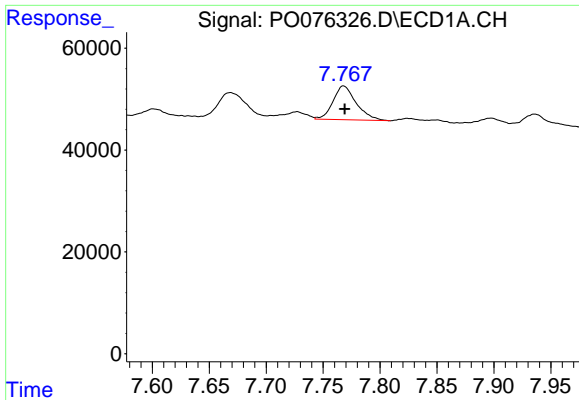
#26 AR-1254-1  
 R.T.: 6.047 min  
 Delta R.T.: -0.003 min  
 Response: 40238  
 Conc: 17.61 ng/ml



#27 AR-1254-2  
 R.T.: 7.387 min  
 Delta R.T.: 0.000 min  
 Response: 62390  
 Conc: 20.08 ng/ml



#27 AR-1254-2  
 R.T.: 6.206 min  
 Delta R.T.: -0.004 min  
 Response: 30369  
 Conc: 15.33 ng/ml

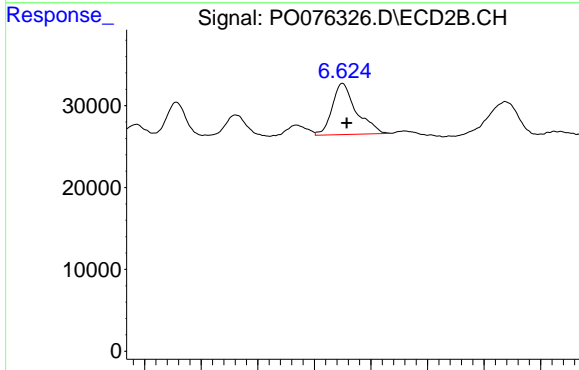


#28 AR-1254-3

R.T.: 7.768 min  
 Delta R.T.: -0.001 min  
 Response: 94219  
 Conc: 29.62 ng/ml

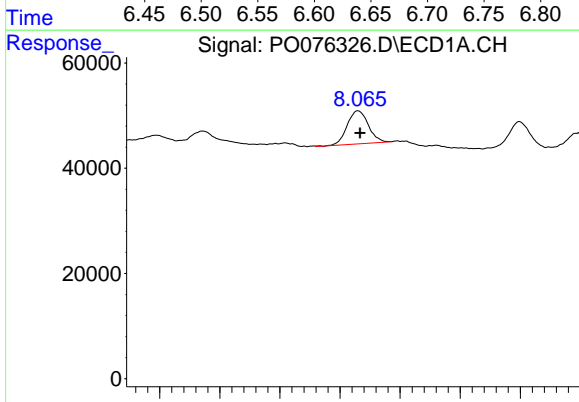
**Instrument :**  
 ECD\_O  
**ClientSampleId :**  
 YELLOW-WALL-2

**Manual Integrations**  
**APPROVED**  
 Ankita  
 3/19/2021 2:35:52 PM



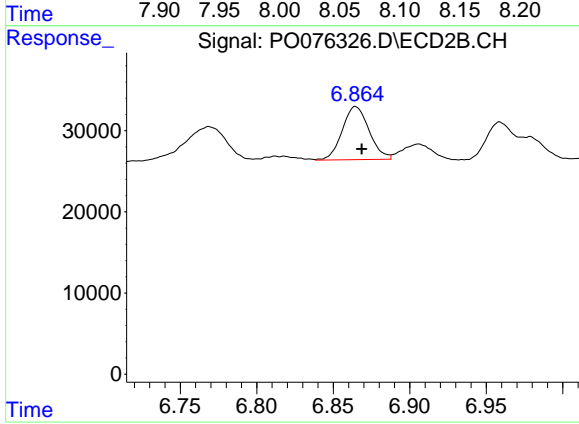
#28 AR-1254-3

R.T.: 6.625 min  
 Delta R.T.: -0.004 min  
 Response: 92485  
 Conc: 30.71 ng/ml



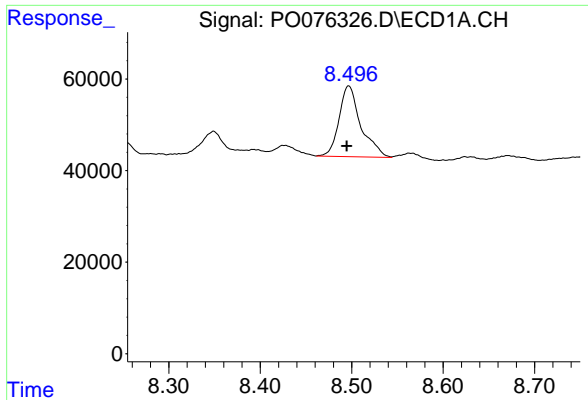
#29 AR-1254-4

R.T.: 8.065 min  
 Delta R.T.: -0.001 min  
 Response: 77085  
 Conc: 36.79 ng/ml



#29 AR-1254-4

R.T.: 6.864 min  
 Delta R.T.: -0.005 min  
 Response: 80365  
 Conc: 45.54 ng/ml m



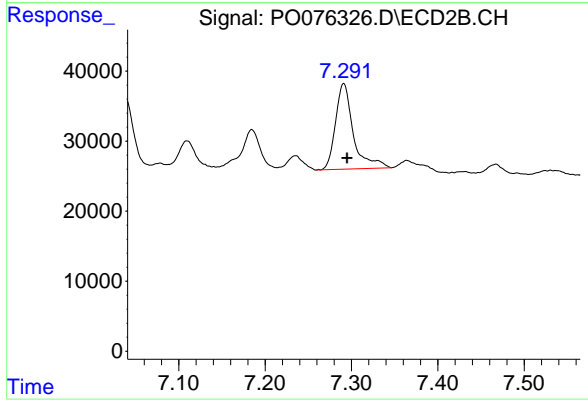
#30 AR-1254-5

R.T.: 8.497 min  
 Delta R.T.: 0.002 min  
 Response: 255384  
 Conc: 111.20 ng/ml

Instrument :  
 ECD\_O  
 ClientSampleId :  
 YELLOW-WALL-2

Manual Integrations  
 APPROVED

Ankita  
 3/19/2021 2:35:52 PM



#30 AR-1254-5

R.T.: 7.291 min  
 Delta R.T.: -0.004 min  
 Response: 175547  
 Conc: 67.05 ng/ml