

Data Path : Z:\pestpcbsrv\HPCHEM1\ECD_0\Data\P0031821\
 Data File : P0076327.D
 Signal(s) : Signal #1: ECD1A.CH Signal #2: ECD2B.CH
 Acq On : 19 Mar 2021 1:00
 Operator : DD\AJ
 Sample : PB135222BL
 Misc :
 ALS Vial : 38 Sample Multiplier: 1

Instrument :
 ECD_0
 ClientSampleId :
 PB135222BL

Integration File signal 1: autoint1.e
 Integration File signal 2: autoint2.e
 Quant Time: Mar 19 02:50:53 2021
 Quant Method : Z:\pestpcbsrv\HPCHEM1\ECD_0\methods\P0031521.M
 Quant Title : GC EXTRACTABLES
 QLast Update : Tue Mar 16 07:18:57 2021
 Response via : Initial Calibration
 Integrator: ChemStation 6890 Scale Mode: Small noise peaks clipped

Volume Inj. : 2 µl
 Signal #1 Phase : ZB-MR1 Signal #2 Phase: ZB-MR2
 Signal #1 Info : 30Mx0.32mmx 0.50µ Signal #2 Info : 30M x 0.32mm x 0.25µm

Compound	RT#1	RT#2	Resp#1	Resp#2	ng/ml	ng/ml

System Monitoring Compounds						
1) SA Tetrachlo...	4.923	3.934	1298459	958704	22.856	22.979
2) SA Decachlor...	10.925	9.200	950842	874198	24.721	22.767

Target Compounds

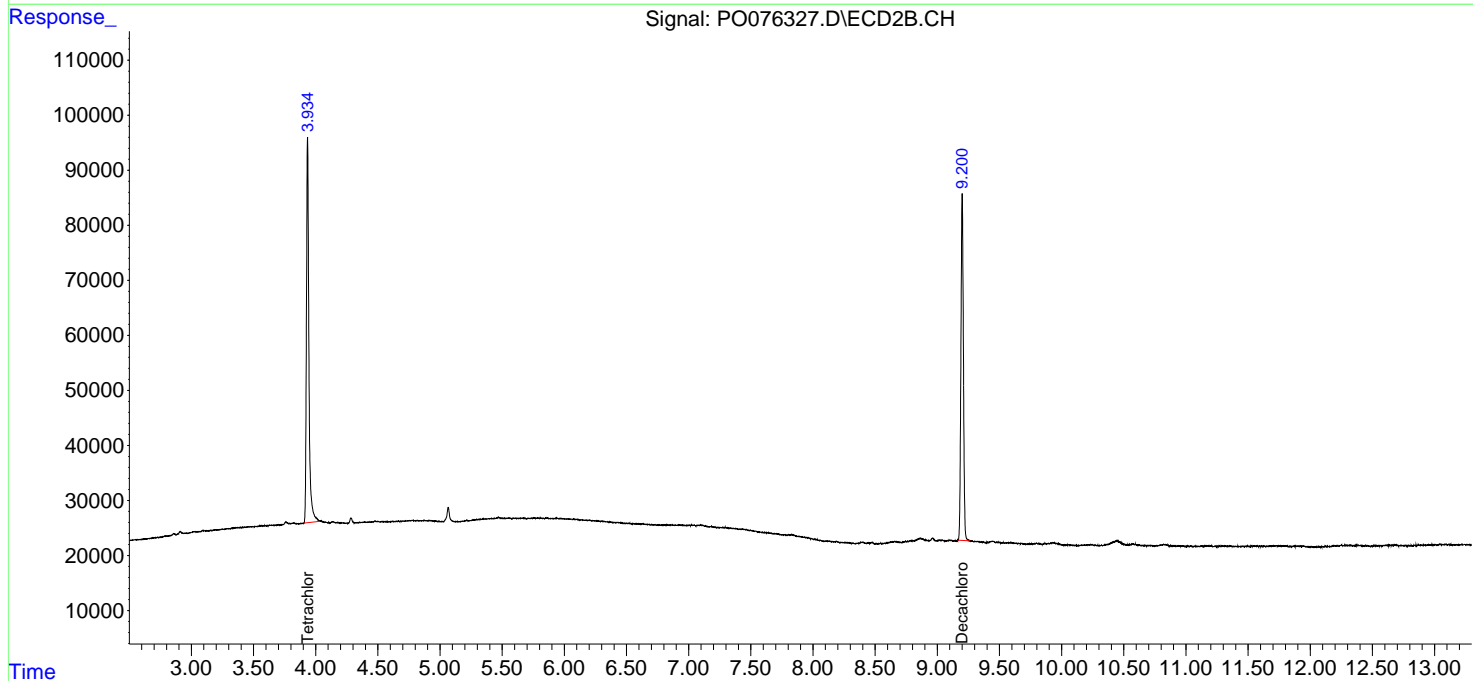
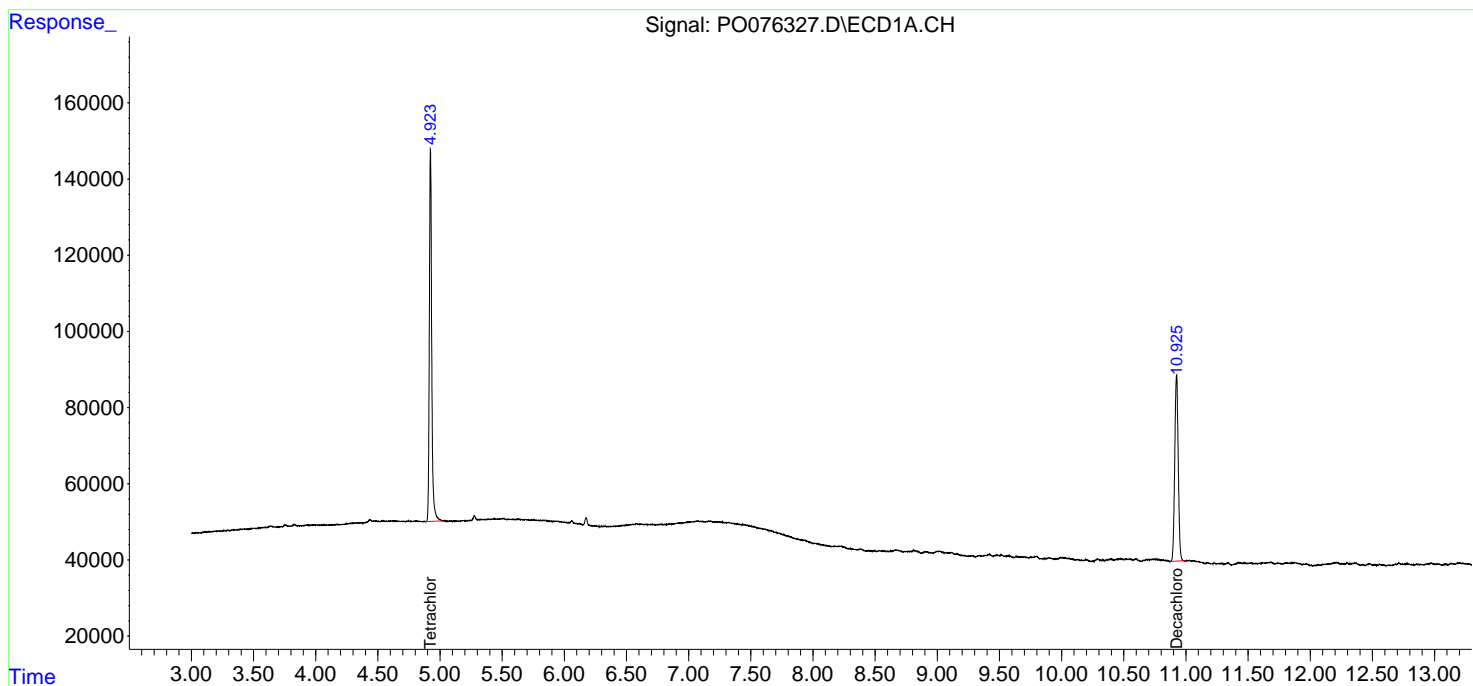
(f)=RT Delta > 1/2 Window (#)=Amounts differ by > 25% (m)=manual int.

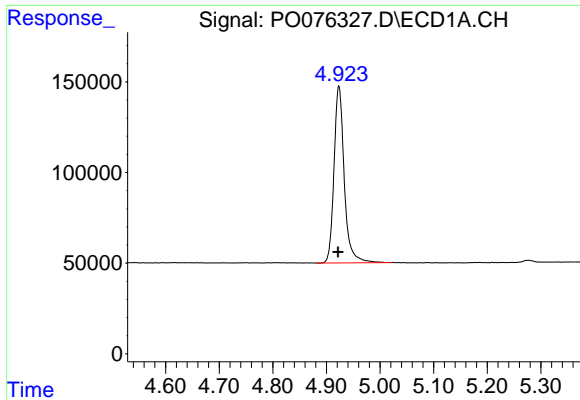
Data Path : Z:\pestpcbsrv\HPCHEM1\ECD_0\Data\P0031821\
 Data File : P0076327.D
 Signal(s) : Signal #1: ECD1A.CH Signal #2: ECD2B.CH
 Acq On : 19 Mar 2021 1:00
 Operator : DD\AJ
 Sample : PB135222BL
 Misc :
 ALS Vial : 38 Sample Multiplier: 1

Instrument :
 ECD_O
 ClientSampleID :
 PB135222BL

Integration File signal 1: autoint1.e
 Integration File signal 2: autoint2.e
 Quant Time: Mar 19 02:50:53 2021
 Quant Method : Z:\pestpcbsrv\HPCHEM1\ECD_0\methods\P0031521.M
 Quant Title : GC EXTRACTABLES
 QLast Update : Tue Mar 16 07:18:57 2021
 Response via : Initial Calibration
 Integrator: ChemStation 6890 Scale Mode: Small noise peaks clipped

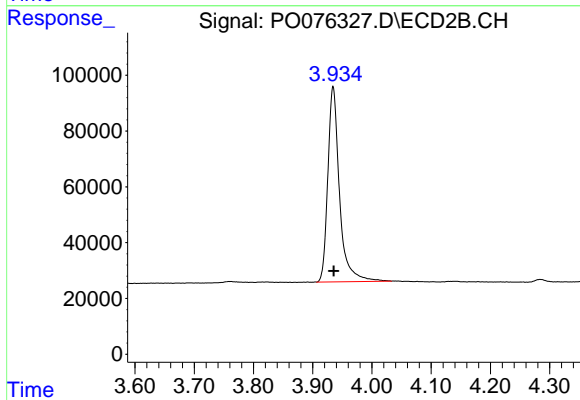
Volume Inj. : 2 µl
 Signal #1 Phase : ZB-MR1 Signal #2 Phase: ZB-MR2
 Signal #1 Info : 30Mx0.32mmx 0.50µ Signal #2 Info : 30M x 0.32mm x 0.25µm



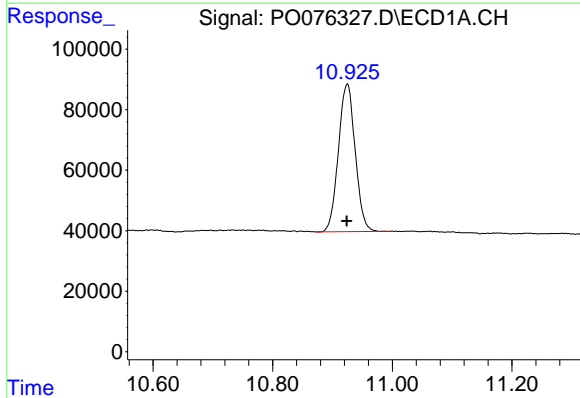


#1 Tetrachloro-m-xylene
 R.T.: 4.923 min
 Delta R.T.: 0.001 min
 Response: 1298459
 Conc: 22.86 ng/ml

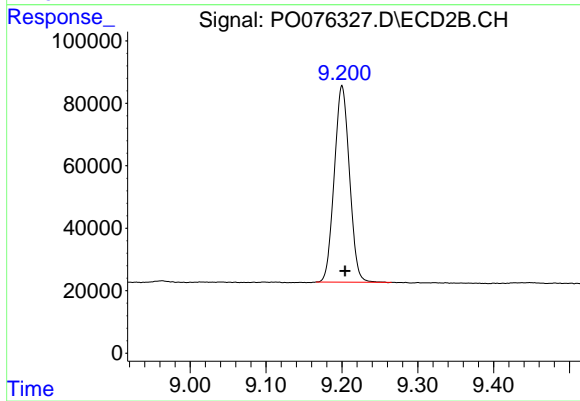
Instrument :
 ECD_O
 ClientSampled :
 PB135222BL



#1 Tetrachloro-m-xylene
 R.T.: 3.934 min
 Delta R.T.: 0.000 min
 Response: 958704
 Conc: 22.98 ng/ml



#2 Decachlorobiphenyl
 R.T.: 10.925 min
 Delta R.T.: 0.001 min
 Response: 950842
 Conc: 24.72 ng/ml



#2 Decachlorobiphenyl
 R.T.: 9.200 min
 Delta R.T.: -0.004 min
 Response: 874198
 Conc: 22.77 ng/ml