

Data Path : Z:\pestpcbsrv\HPCHEM1\ECD\_0\Data\P0031821\  
 Data File : P0076340.D  
 Signal(s) : Signal #1: ECD1A.CH Signal #2: ECD2B.CH  
 Acq On : 19 Mar 2021 5:17  
 Operator : DD\AJ  
 Sample : M1702-06 10X  
 Misc :  
 ALS Vial : 46 Sample Multiplier: 1

Instrument :  
 ECD\_0  
 ClientSampleId :  
 CT-6

Integration File signal 1: autoint1.e  
 Integration File signal 2: autoint2.e  
 Quant Time: Mar 19 06:47:42 2021  
 Quant Method : Z:\pestpcbsrv\HPCHEM1\ECD\_0\methods\P0031521.M  
 Quant Title : GC EXTRACTABLES  
 QLast Update : Tue Mar 16 07:18:57 2021  
 Response via : Initial Calibration  
 Integrator: ChemStation 6890 Scale Mode: Small noise peaks clipped

Volume Inj. : 2 µl  
 Signal #1 Phase : ZB-MR1 Signal #2 Phase: ZB-MR2  
 Signal #1 Info : 30Mx0.32mmx 0.50µ Signal #2 Info : 30M x 0.32mm x 0.25µm

| Compound                    | RT#1   | RT#2  | Resp#1 | Resp#2 | ng/ml   | ng/ml    |
|-----------------------------|--------|-------|--------|--------|---------|----------|
| -----                       |        |       |        |        |         |          |
| System Monitoring Compounds |        |       |        |        |         |          |
| 1) SA Tetrachlo...          | 4.920  | 3.932 | 134812 | 102907 | 2.373   | 2.467    |
| 2) SA Decachlor...          | 10.920 | 9.198 | 115890 | 107260 | 3.013   | 2.793    |
| Target Compounds            |        |       |        |        |         |          |
| 21) L5 AR-1248-1            | 6.244  | 5.181 | 111284 | 84994  | 118.038 | 123.757  |
| 22) L5 AR-1248-2            | 6.538  | 5.441 | 128795 | 105743 | 85.499  | 81.727   |
| 23) L5 AR-1248-3            | 6.755  | 5.485 | 156405 | 120153 | 90.177  | 94.002   |
| 24) L5 AR-1248-4            | 7.186  | 5.668 | 228077 | 135735 | 129.638 | 92.308 # |
| 25) L5 AR-1248-5            | 7.225  | 6.090 | 232271 | 174346 | 131.328 | 112.731  |
| -----                       |        |       |        |        |         |          |

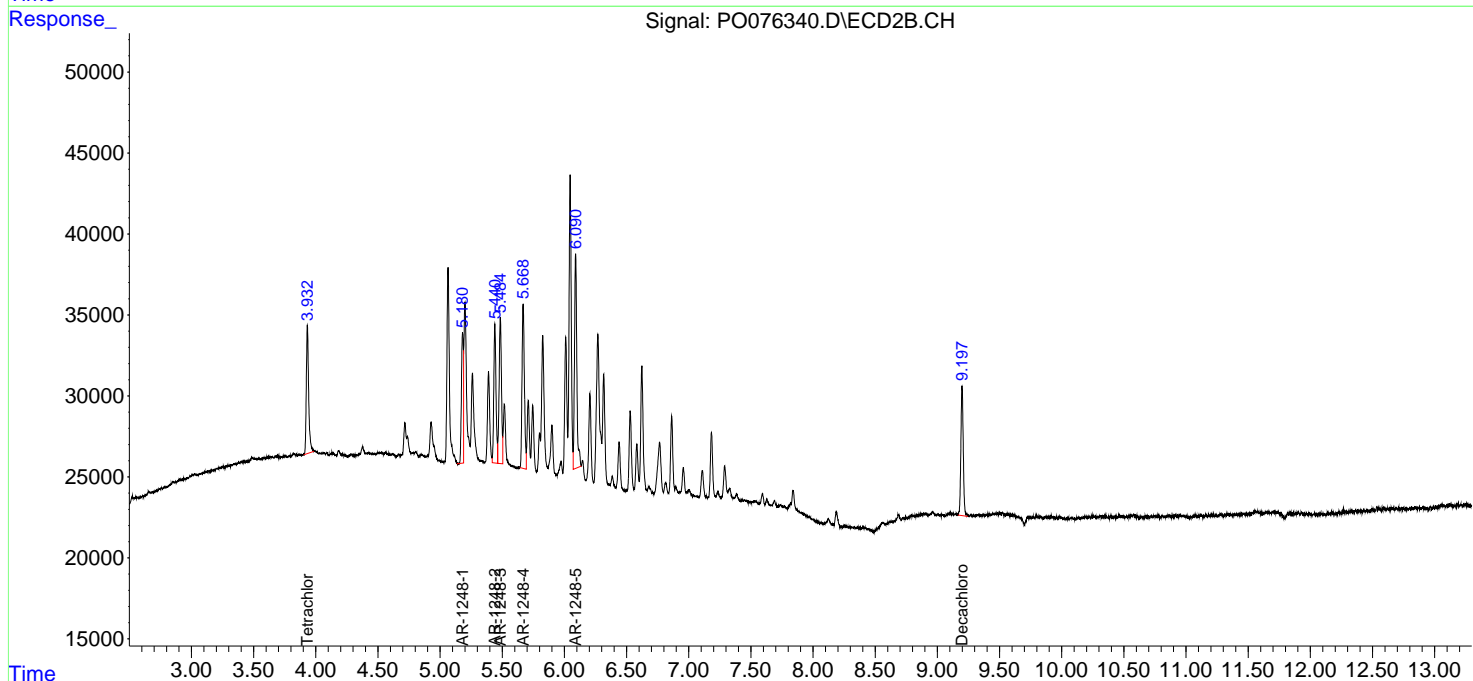
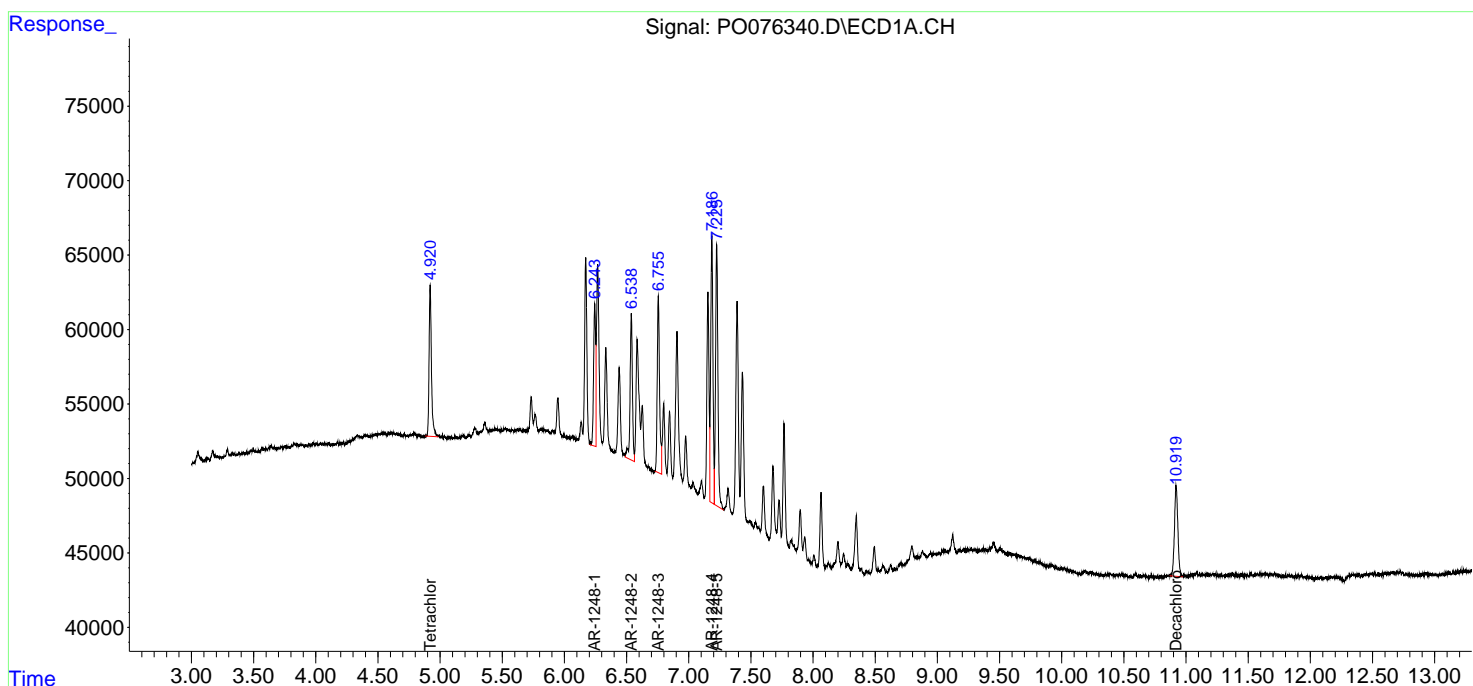
(f)=RT Delta > 1/2 Window (#)=Amounts differ by > 25% (m)=manual int.

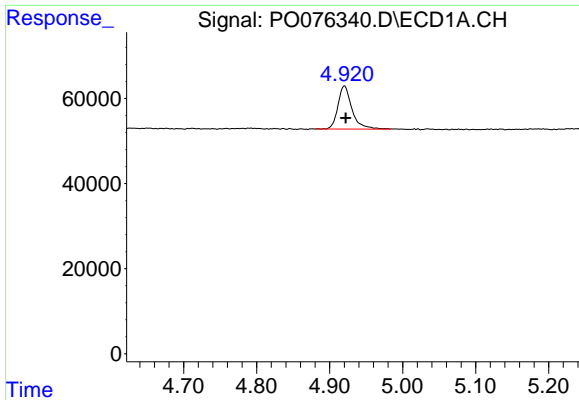
Data Path : Z:\pestpcbsrv\HPCHEM1\ECD\_O\Data\P0031821\  
 Data File : P0076340.D  
 Signal(s) : Signal #1: ECD1A.CH Signal #2: ECD2B.CH  
 Acq On : 19 Mar 2021 5:17  
 Operator : DD\AJ  
 Sample : M1702-06 10X  
 Misc :  
 ALS Vial : 46 Sample Multiplier: 1

Instrument :  
 ECD\_O  
 ClientSampled :  
 CT-6

Integration File signal 1: autoint1.e  
 Integration File signal 2: autoint2.e  
 Quant Time: Mar 19 06:47:42 2021  
 Quant Method : Z:\pestpcbsrv\HPCHEM1\ECD\_O\methods\P0031521.M  
 Quant Title : GC EXTRACTABLES  
 QLast Update : Tue Mar 16 07:18:57 2021  
 Response via : Initial Calibration  
 Integrator: ChemStation 6890 Scale Mode: Small noise peaks clipped

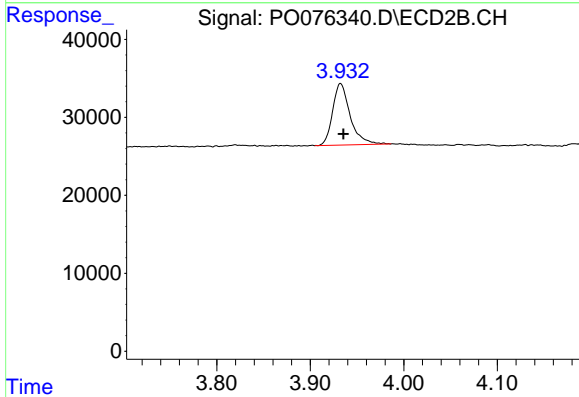
Volume Inj. : 2 µl  
 Signal #1 Phase : ZB-MR1 Signal #2 Phase: ZB-MR2  
 Signal #1 Info : 30Mx0.32mmx 0.50µ Signal #2 Info : 30M x 0.32mm x 0.25µm



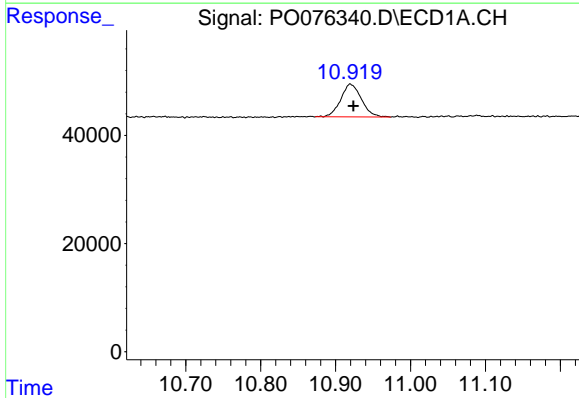


#1 Tetrachloro-m-xylene  
 R.T.: 4.920 min  
 Delta R.T.: -0.002 min  
 Response: 134812  
 Conc: 2.37 ng/ml

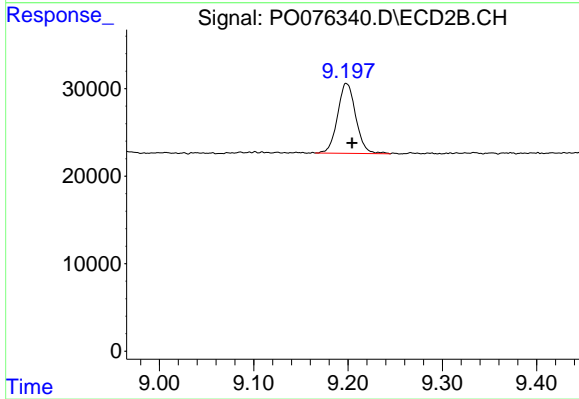
Instrument :  
 ECD\_O  
 ClientSampleId :  
 CT-6



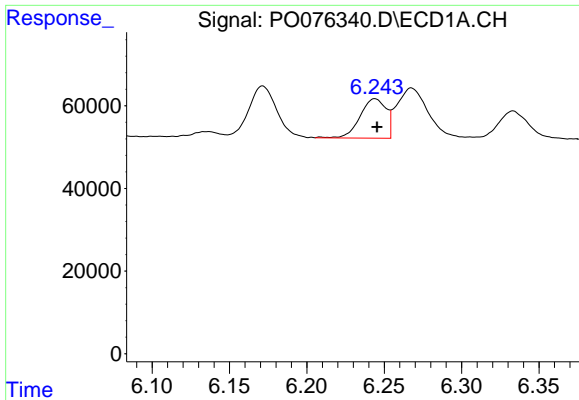
#1 Tetrachloro-m-xylene  
 R.T.: 3.932 min  
 Delta R.T.: -0.003 min  
 Response: 102907  
 Conc: 2.47 ng/ml



#2 Decachlorobiphenyl  
 R.T.: 10.920 min  
 Delta R.T.: -0.004 min  
 Response: 115890  
 Conc: 3.01 ng/ml



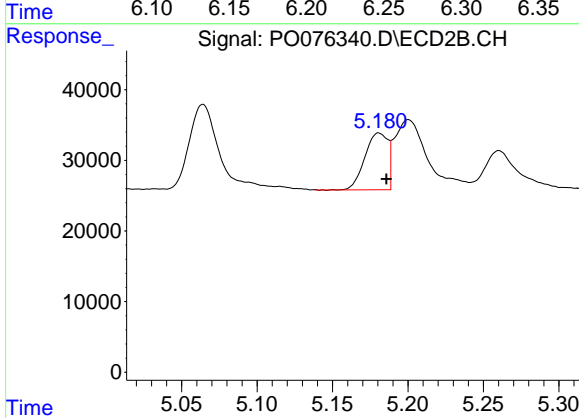
#2 Decachlorobiphenyl  
 R.T.: 9.198 min  
 Delta R.T.: -0.006 min  
 Response: 107260  
 Conc: 2.79 ng/ml



#21 AR-1248-1

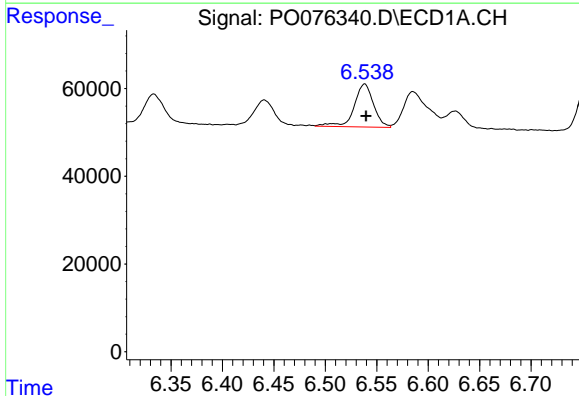
R.T.: 6.244 min  
 Delta R.T.: -0.001 min  
 Response: 111284  
 Conc: 118.04 ng/ml

Instrument :  
 ECD\_O  
 ClientSampleId :  
 CT-6



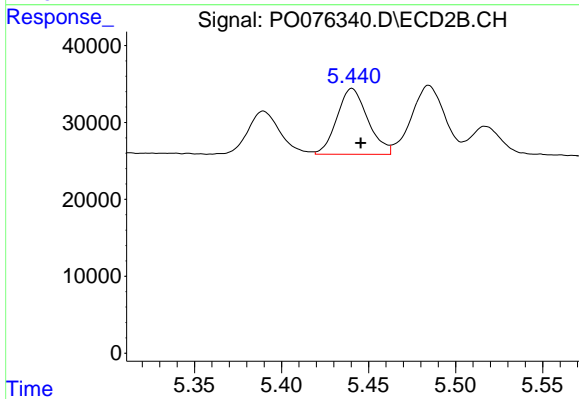
#21 AR-1248-1

R.T.: 5.181 min  
 Delta R.T.: -0.005 min  
 Response: 84994  
 Conc: 123.76 ng/ml



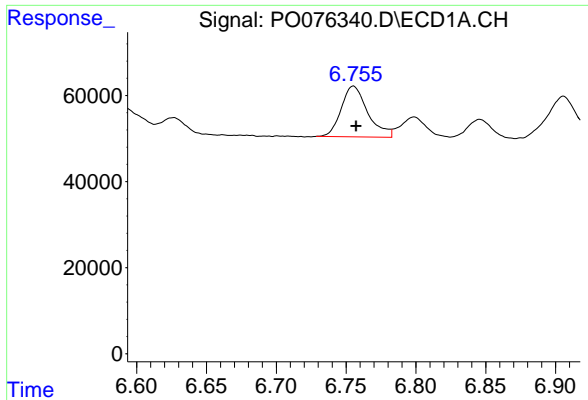
#22 AR-1248-2

R.T.: 6.538 min  
 Delta R.T.: -0.001 min  
 Response: 128795  
 Conc: 85.50 ng/ml



#22 AR-1248-2

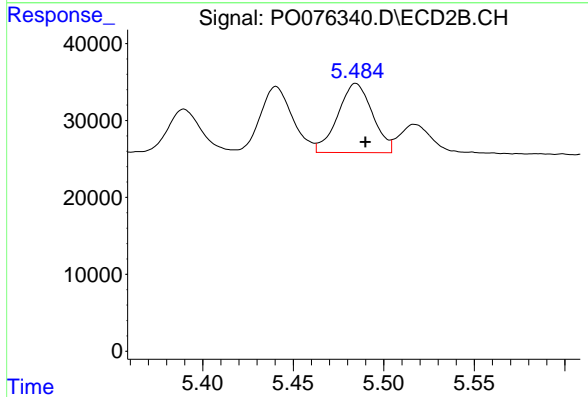
R.T.: 5.441 min  
 Delta R.T.: -0.005 min  
 Response: 105743  
 Conc: 81.73 ng/ml



#23 AR-1248-3

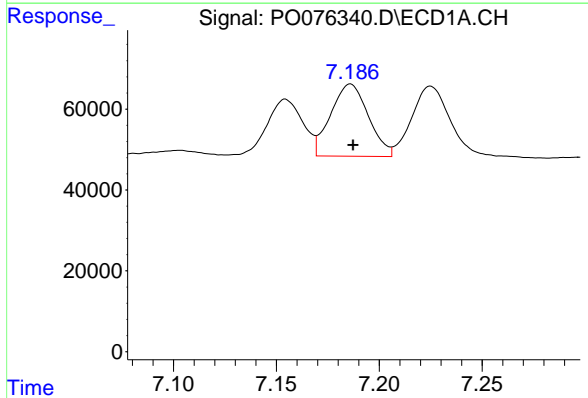
R.T.: 6.755 min  
 Delta R.T.: -0.002 min  
 Response: 156405  
 Conc: 90.18 ng/ml

Instrument :  
 ECD\_O  
 ClientSampled :  
 CT-6



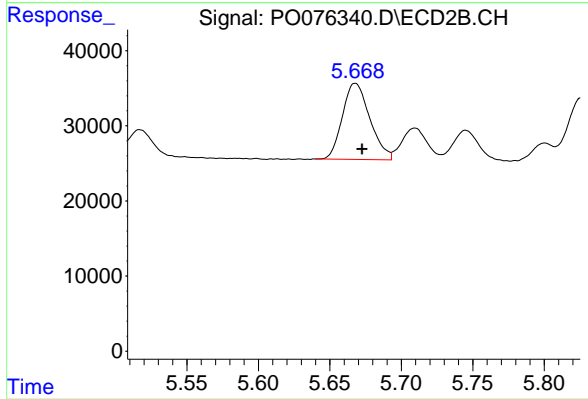
#23 AR-1248-3

R.T.: 5.485 min  
 Delta R.T.: -0.005 min  
 Response: 120153  
 Conc: 94.00 ng/ml



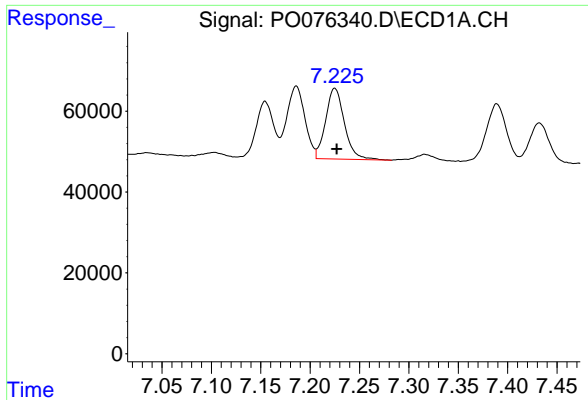
#24 AR-1248-4

R.T.: 7.186 min  
 Delta R.T.: -0.001 min  
 Response: 228077  
 Conc: 129.64 ng/ml



#24 AR-1248-4

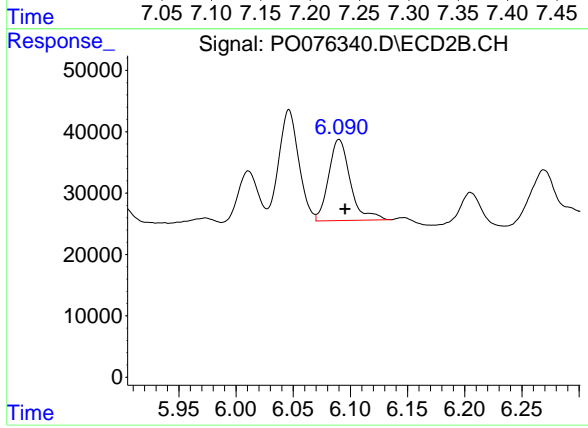
R.T.: 5.668 min  
 Delta R.T.: -0.005 min  
 Response: 135735  
 Conc: 92.31 ng/ml



#25 AR-1248-5

R.T.: 7.225 min  
 Delta R.T.: -0.002 min  
 Response: 232271  
 Conc: 131.33 ng/ml

Instrument :  
 ECD\_O  
 ClientSampleId :  
 CT-6



#25 AR-1248-5

R.T.: 6.090 min  
 Delta R.T.: -0.005 min  
 Response: 174346  
 Conc: 112.73 ng/ml