

Data Path : Z:\pestpcbsrv\HPCHEM1\ECD_0\Data\P0031822\
 Data File : P0085507.D
 Signal(s) : Signal #1: ECD1A.CH Signal #2: ECD2B.CH
 Acq On : 18 Mar 2022 20:43
 Operator : YP\AJ
 Sample : PB143456BL
 Misc :
 ALS Vial : 21 Sample Multiplier: 1

Instrument :
 ECD_0
 ClientSampleId :
 PB143456BL

Integration File signal 1: autoint1.e
 Integration File signal 2: autoint2.e
 Quant Time: Mar 19 06:19:24 2022
 Quant Method : Z:\pestpcbsrv\HPCHEM1\ECD_0\methods\P0031522.M
 Quant Title : GC EXTRACTABLES
 QLast Update : Wed Mar 16 04:43:31 2022
 Response via : Initial Calibration
 Integrator: ChemStation 6890 Scale Mode: Small noise peaks clipped

Volume Inj. : 2 µl
 Signal #1 Phase : ZB-MR1 Signal #2 Phase: ZB-MR2
 Signal #1 Info : 30Mx0.32mmx 0.50µ Signal #2 Info : 30M x 0.32mm x 0.25µm

Compound	RT#1	RT#2	Resp#1	Resp#2	ng/ml	ng/ml

System Monitoring Compounds						
1) SA Tetrachlo...	4.491	3.589	4197066	896571	20.526	20.927
2) SA Decachlor...	10.393	8.606	2238457	742917	18.622	19.350

Target Compounds

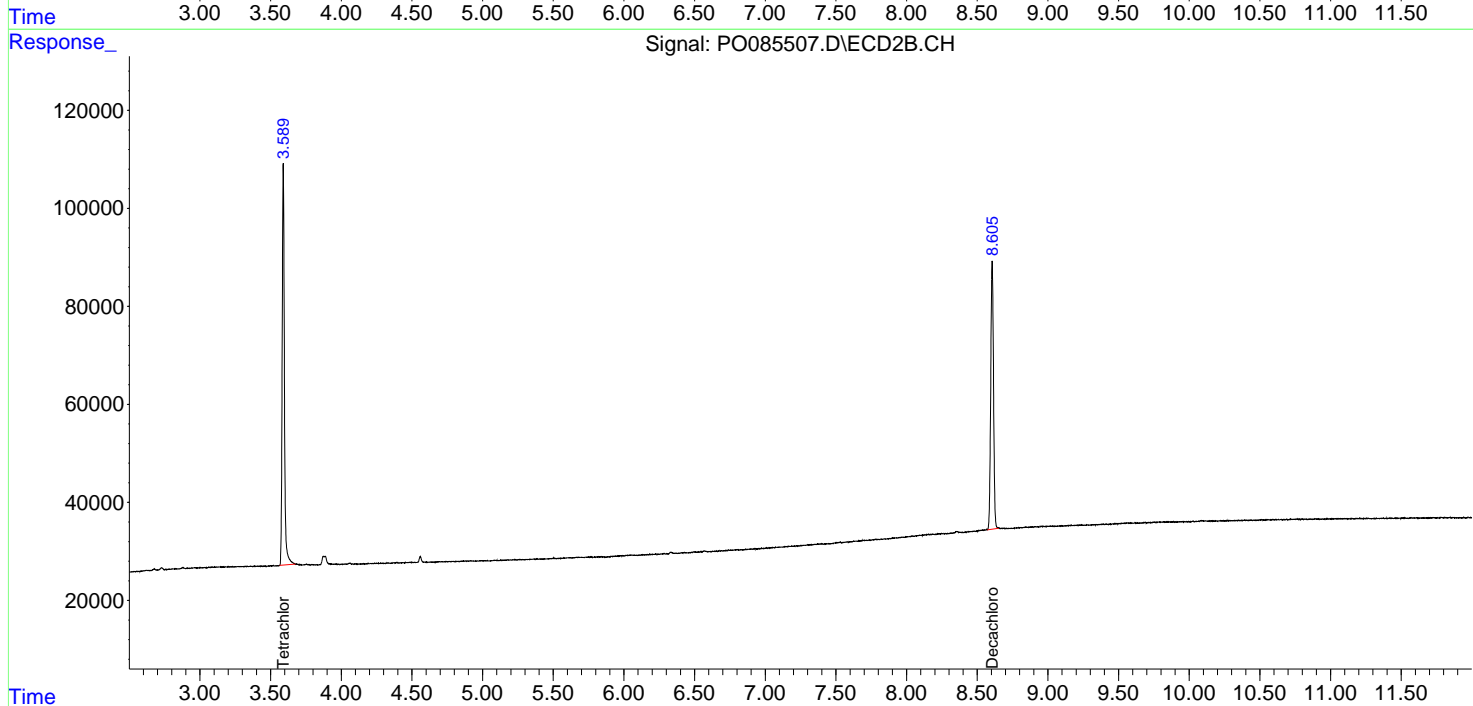
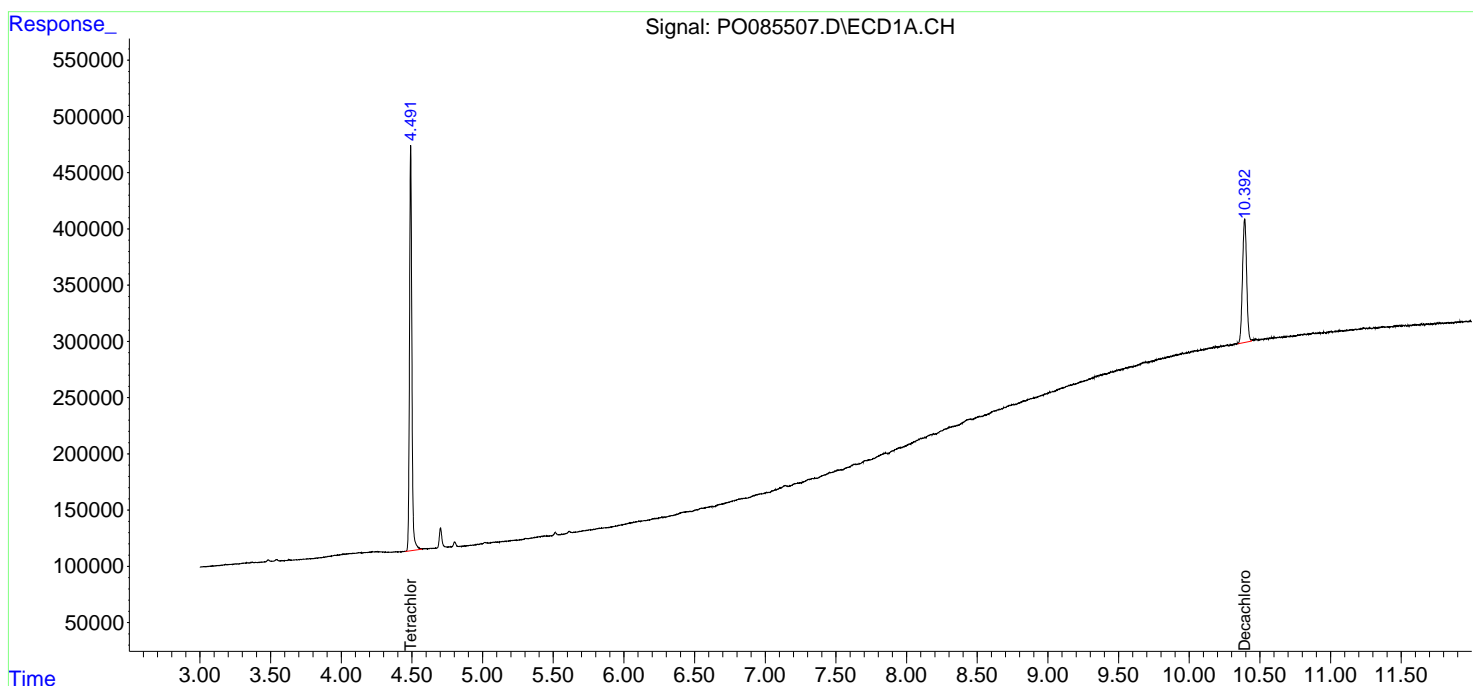
(f)=RT Delta > 1/2 Window (#)=Amounts differ by > 25% (m)=manual int.

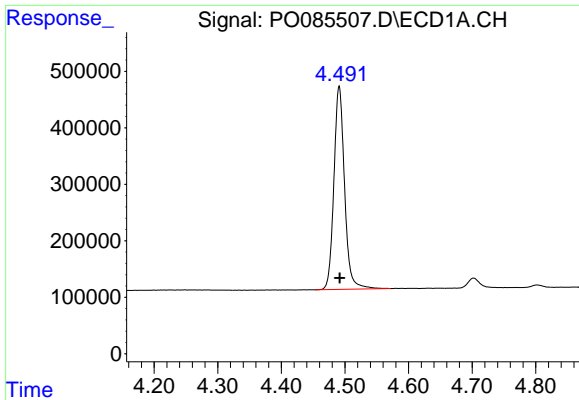
Data Path : Z:\pestpcbsrv\HPCHEM1\ECD_O\Data\P0031822\
 Data File : P0085507.D
 Signal(s) : Signal #1: ECD1A.CH Signal #2: ECD2B.CH
 Acq On : 18 Mar 2022 20:43
 Operator : YP\AJ
 Sample : PB143456BL
 Misc :
 ALS Vial : 21 Sample Multiplier: 1

Instrument :
 ECD_O
 ClientSampleId :
 PB143456BL

Integration File signal 1: autoint1.e
 Integration File signal 2: autoint2.e
 Quant Time: Mar 19 06:19:24 2022
 Quant Method : Z:\pestpcbsrv\HPCHEM1\ECD_O\methods\P0031522.M
 Quant Title : GC EXTRACTABLES
 QLast Update : Wed Mar 16 04:43:31 2022
 Response via : Initial Calibration
 Integrator: ChemStation 6890 Scale Mode: Small noise peaks clipped

Volume Inj. : 2 µl
 Signal #1 Phase : ZB-MR1 Signal #2 Phase: ZB-MR2
 Signal #1 Info : 30Mx0.32mmx 0.50µ Signal #2 Info : 30M x 0.32mm x 0.25µm

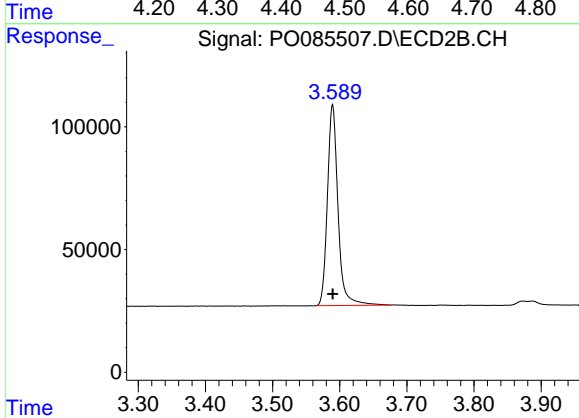




#1 Tetrachloro-m-xylene

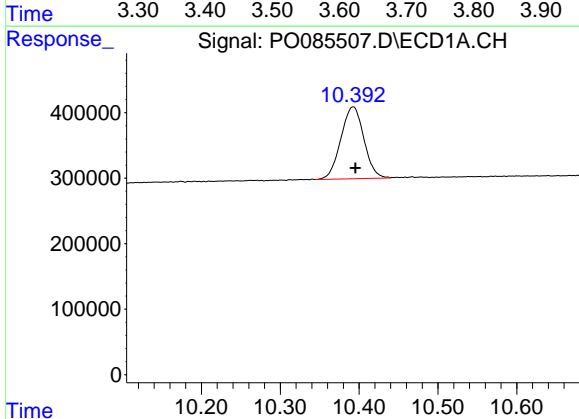
R.T.: 4.491 min
 Delta R.T.: 0.000 min
 Response: 4197066
 Conc: 20.53 ng/ml

Instrument :
 ECD_O
 ClientSampleId :
 PB143456BL



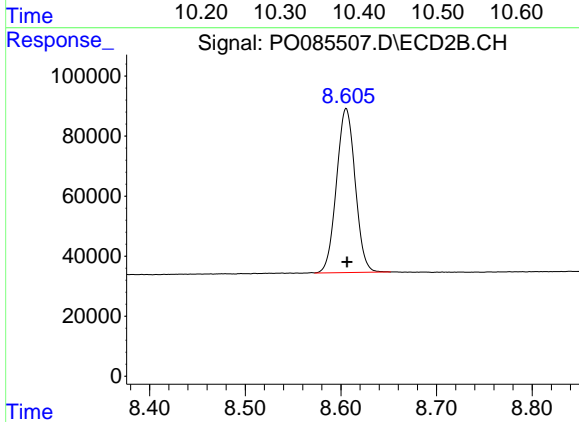
#1 Tetrachloro-m-xylene

R.T.: 3.589 min
 Delta R.T.: 0.000 min
 Response: 896571
 Conc: 20.93 ng/ml



#2 Decachlorobiphenyl

R.T.: 10.393 min
 Delta R.T.: -0.003 min
 Response: 2238457
 Conc: 18.62 ng/ml



#2 Decachlorobiphenyl

R.T.: 8.606 min
 Delta R.T.: 0.000 min
 Response: 742917
 Conc: 19.35 ng/ml