

Data Path : Z:\pestpcbsrv\HPCHEM1\ECD_O\Data\P0031825\
 Data File : PO109968.D
 Signal(s) : Signal #1: ECD1A.ch Signal #2: ECD2B.ch
 Acq On : 18 Mar 2025 10:14
 Operator : YP/AJ
 Sample : AR1248CCC500
 Misc :
 ALS Vial : 5 Sample Multiplier: 1

Instrument :
 ECD_O
 ClientSampleId :
 AR1248CCC500

Integration File signal 1: autoint1.e
 Integration File signal 2: autoint2.e
 Quant Time: Mar 19 01:19:31 2025
 Quant Method : Z:\pestpcbsrv\HPCHEM1\ECD_O\methods\P0022025.M
 Quant Title : GC EXTRACTABLES
 QLast Update : Fri Feb 21 04:40:23 2025
 Response via : Initial Calibration
 Integrator: ChemStation

Volume Inj. : 2 µl
 Signal #1 Phase : ZB-MR1 Signal #2 Phase: ZB-MR2
 Signal #1 Info : 30Mx0.32mmx 0.50µ Signal #2 Info : 30M x 0.32mm x 0.25µm

Compound	RT#1	RT#2	Resp#1	Resp#2	ng/ml	ng/ml
System Monitoring Compounds						
1) SA Tetrachlo...	3.693	3.691	495.3E6	271.3E6	52.326	51.830
2) SA Decachlor...	8.745	8.696	358.2E6	120.3E6	41.646	37.775
Target Compounds						
3) L1 AR-1016-1	4.786	4.772	104.4E6	53592066	338.648	343.164
4) L1 AR-1016-2	4.805	4.791	105.4E6	55555423	250.328	256.686
5) L1 AR-1016-3	4.861	4.968	57722855	37674457	195.130	315.396 #
6) L1 AR-1016-4	4.983	5.008	71124146	71741874	306.860	689.358 #
7) L1 AR-1016-5	5.239	5.222	186.4E6	99057149	721.644	727.006
8) L2 AR-1221-1	3.905	3.900	1357958	1269828	10.297	18.537 #
9) L2 AR-1221-2	3.995	3.989	9605607	5572028	97.320	108.532
10) L2 AR-1221-3	4.069	4.062	10453579	5964579	38.740	41.014
11) L3 AR-1232-1	4.069	4.062	10453579	5964579	50.034	53.512
12) L3 AR-1232-2	4.562	4.791	46686675	55555423	402.184	537.717 #
13) L3 AR-1232-3	4.805	4.968	105.4E6	37674457	521.923	663.612 #
14) L3 AR-1232-4	4.983	5.050	71124146	80423991	639.489	1465.064 #
15) L3 AR-1232-5	5.024	5.222	134.2E6	99057149	1643.292	1684.504
16) L4 AR-1242-1	4.786	4.772	104.4E6	53592066	398.838	404.936
17) L4 AR-1242-2	4.805	4.791	105.4E6	55555423	296.015	306.064
18) L4 AR-1242-3	4.861	4.968	57722855	37674457	229.633	377.218 #
19) L4 AR-1242-4	4.983	5.050	71124146	80423991	362.044	752.199 #
20) L4 AR-1242-5	5.636	5.572	184.3E6	130.3E6	859.474	1036.200
21) L5 AR-1248-1	4.786	4.772	104.4E6	53592066	523.294	533.111
22) L5 AR-1248-2	5.024	5.008	134.2E6	71741874	482.249	493.140
23) L5 AR-1248-3	5.239	5.050	186.4E6	80423991	533.385	518.837
24) L5 AR-1248-4	5.593	5.222	253.8E6	99057149	532.068	547.891
25) L5 AR-1248-5	5.636	5.614	184.3E6	95315006	537.944	553.500
26) L6 AR-1254-1	5.593	5.572	253.8E6	130.3E6	492.327	498.038
27) L6 AR-1254-2	5.744	5.720	89217547	48078131	198.096	204.970
28) L6 AR-1254-3	6.148	6.123	118.4E6	61666050	165.341	172.877
29) L6 AR-1254-4	6.378	6.351	83977368	41913840	200.523	217.031
30) L6 AR-1254-5	6.798	6.768	24227129	12806247	38.832	43.158
31) L7 AR-1260-1	6.294	6.267	48973722	33679348	105.064	142.155 #
32) L7 AR-1260-2	6.468	6.441	13278921	6689589	23.498	24.311
33) L7 AR-1260-3	6.868	6.593	2566787	7346001	5.396	28.800 #
34) L7 AR-1260-4	7.097	7.064	1585576	792853	3.674	3.845
35) L7 AR-1260-5	7.339	7.305	3674935	1910876	3.698	4.267
36) L8 AR-1262-1	6.868	6.837	2566787	2556439	3.855	8.059 #
37) L8 AR-1262-2	7.339	7.305	3674935	1910876	3.253	3.832
38) L8 AR-1262-3	7.624	7.590	703024	415150	1.568	2.115 #
39) L8 AR-1262-4	7.685	7.651	3269479	1492546	3.943	4.206
40) L8 AR-1262-5	8.183	8.147	969111	319655	2.596	2.233
41) L9 AR-1268-1	7.624	7.590	703024	415150	0.531	0.727 #

Data Path : Z:\pestpcbsrv\HPCHEM1\ECD_0\Data\P0031825\
 Data File : P0109968.D
 Signal(s) : Signal #1: ECD1A.ch Signal #2: ECD2B.ch
 Acq On : 18 Mar 2025 10:14
 Operator : YP/AJ
 Sample : AR1248CCC500
 Misc :
 ALS Vial : 5 Sample Multiplier: 1

Instrument :
 ECD_0
 ClientSampleId :
 AR1248CCC500

Integration File signal 1: autoint1.e
 Integration File signal 2: autoint2.e
 Quant Time: Mar 19 01:19:31 2025
 Quant Method : Z:\pestpcbsrv\HPCHEM1\ECD_0\methods\P0022025.M
 Quant Title : GC EXTRACTABLES
 QLast Update : Fri Feb 21 04:40:23 2025
 Response via : Initial Calibration
 Integrator: ChemStation

Volume Inj. : 2 µl
 Signal #1 Phase : ZB-MR1 Signal #2 Phase: ZB-MR2
 Signal #1 Info : 30Mx0.32mmx 0.50µ Signal #2 Info : 30M x 0.32mm x 0.25µm

	Compound	RT#1	RT#2	Resp#1	Resp#2	ng/ml	ng/ml
42)	L9 AR-1268-2	7.685	7.651	3269479	1492546	2.704	2.843
43)	L9 AR-1268-3	7.897	7.859	1002891	845411	0.985	1.975 #
44)	L9 AR-1268-4	8.183	8.147	969111	319655	2.281	1.981
45)	L9 AR-1268-5	8.482	8.439	2839186	963910	0.940	0.882

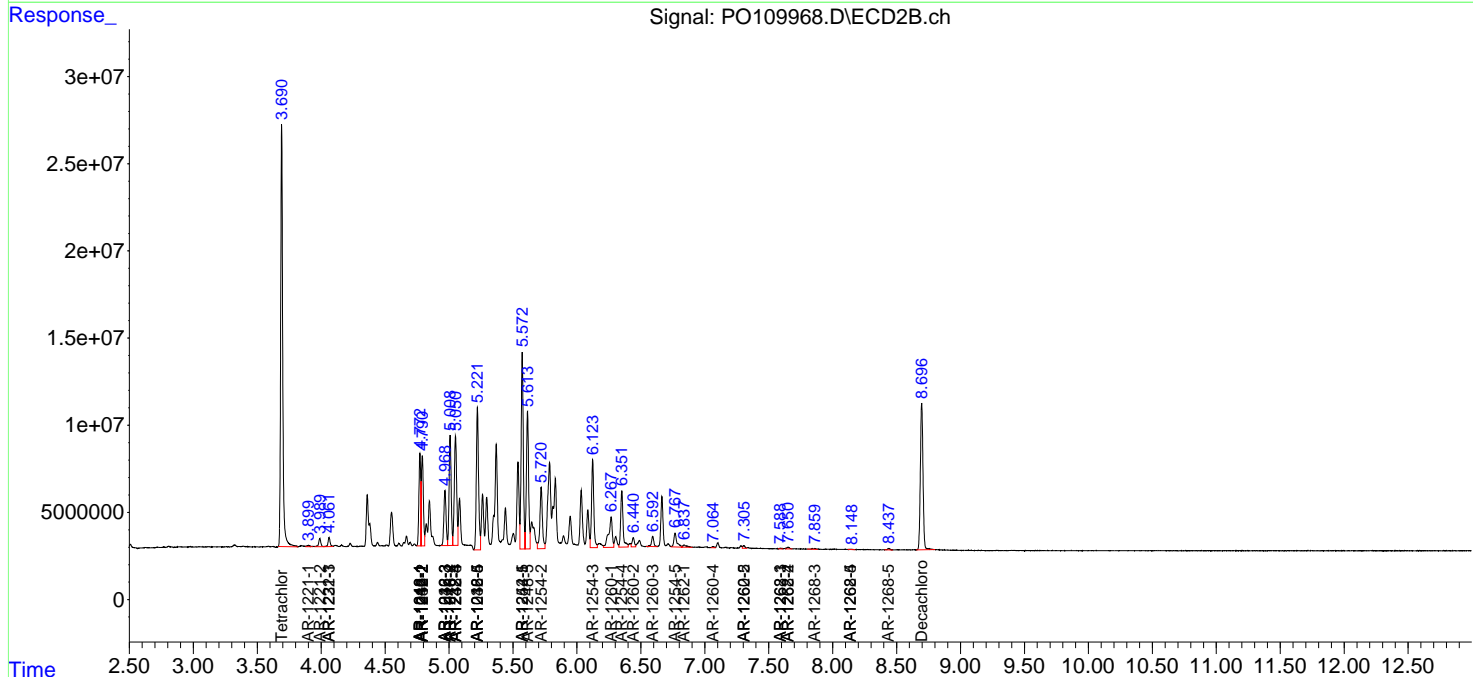
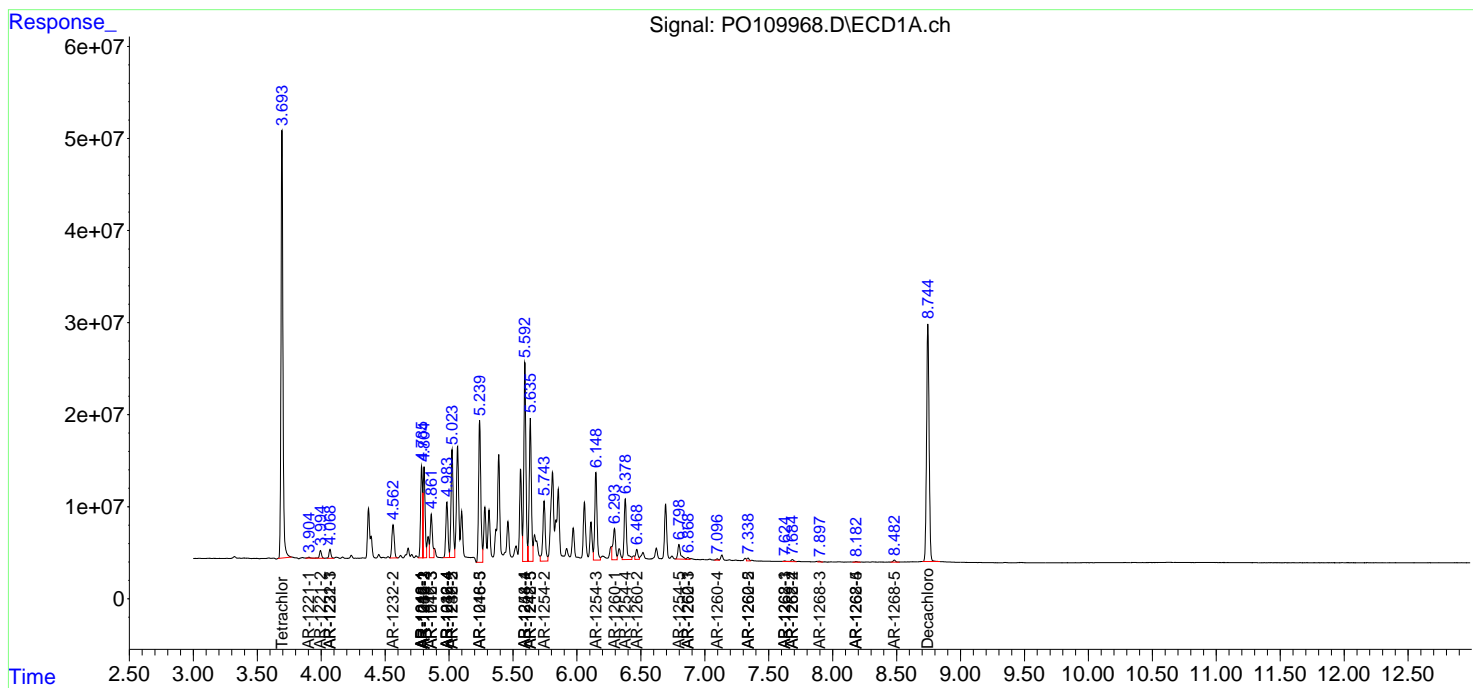
(f)=RT Delta > 1/2 Window (#)=Amounts differ by > 25% (m)=manual int.

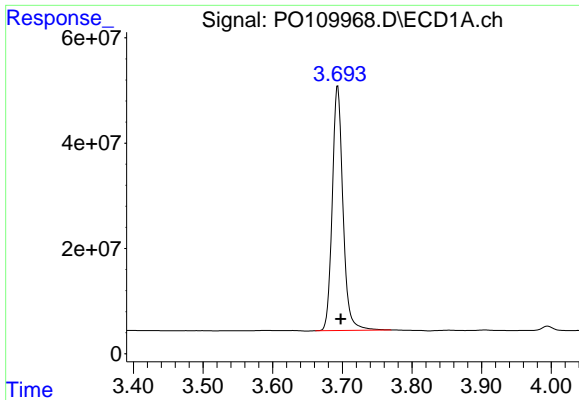
Data Path : Z:\pestpcbsrv\HPCHEM1\ECD_O\Data\PO031825\
 Data File : PO109968.D
 Signal(s) : Signal #1: ECD1A.ch Signal #2: ECD2B.ch
 Acq On : 18 Mar 2025 10:14
 Operator : YP/AJ
 Sample : AR1248CCC500
 Misc :
 ALS Vial : 5 Sample Multiplier: 1

Instrument :
 ECD_O
 ClientSampleId :
 AR1248CCC500

Integration File signal 1: autoint1.e
 Integration File signal 2: autoint2.e
 Quant Time: Mar 19 01:19:31 2025
 Quant Method : Z:\pestpcbsrv\HPCHEM1\ECD_O\methods\PO022025.M
 Quant Title : GC EXTRACTABLES
 QLast Update : Fri Feb 21 04:40:23 2025
 Response via : Initial Calibration
 Integrator: ChemStation

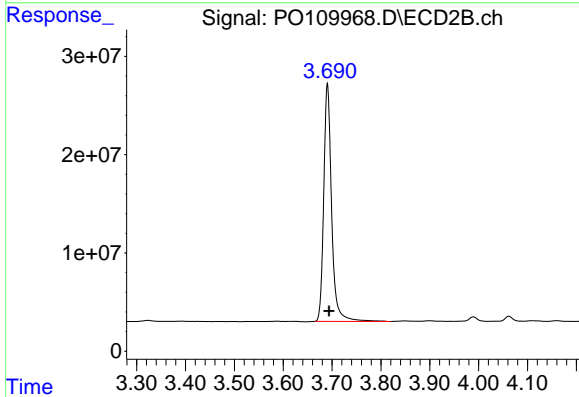
Volume Inj. : 2 µl
 Signal #1 Phase : ZB-MR1 Signal #2 Phase: ZB-MR2
 Signal #1 Info : 30Mx0.32mmx 0.50µ Signal #2 Info : 30M x 0.32mm x 0.25µm



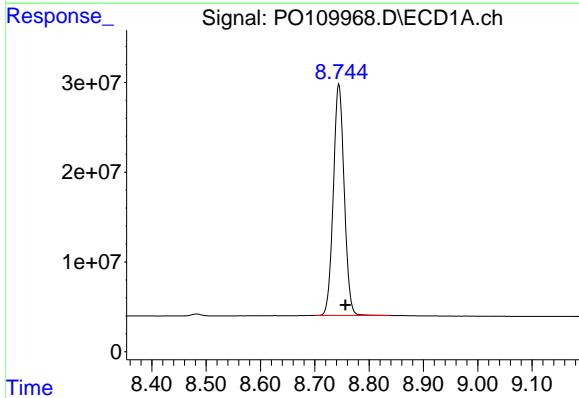


#1 Tetrachloro-m-xylene
 R.T.: 3.693 min
 Delta R.T.: -0.005 min
 Response: 495268600
 Conc: 52.33 ng/ml

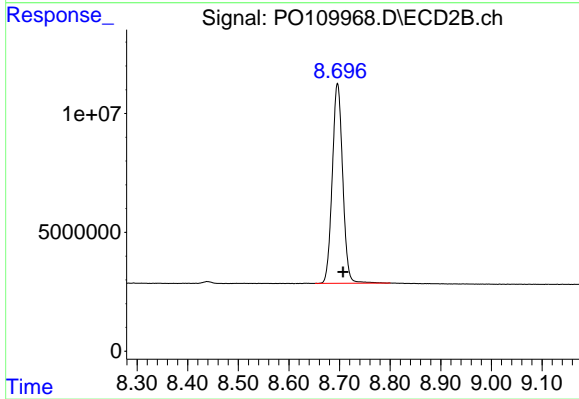
Instrument :
 ECD_O
 ClientSampleId :
 AR1248CCC500



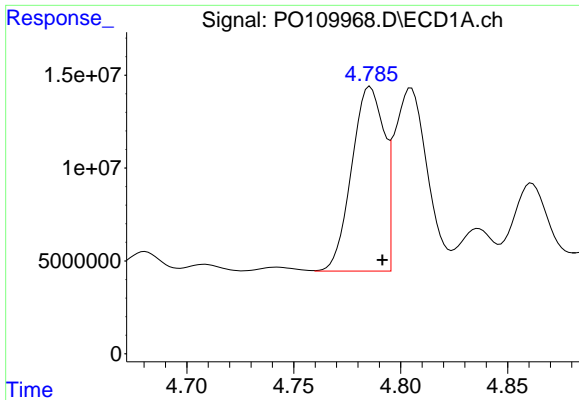
#1 Tetrachloro-m-xylene
 R.T.: 3.691 min
 Delta R.T.: -0.003 min
 Response: 271288514
 Conc: 51.83 ng/ml



#2 Decachlorobiphenyl
 R.T.: 8.745 min
 Delta R.T.: -0.012 min
 Response: 358237295
 Conc: 41.65 ng/ml



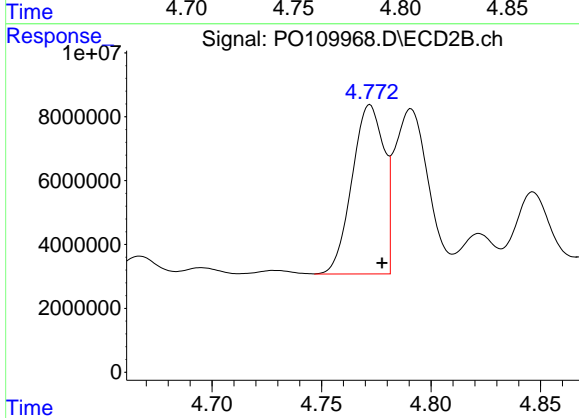
#2 Decachlorobiphenyl
 R.T.: 8.696 min
 Delta R.T.: -0.011 min
 Response: 120284084
 Conc: 37.77 ng/ml



#3 AR-1016-1

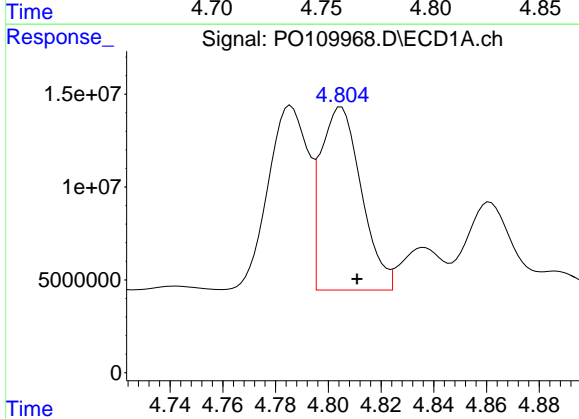
R.T.: 4.786 min
 Delta R.T.: -0.006 min
 Response: 104401827
 Conc: 338.65 ng/ml

Instrument :
 ECD_O
 ClientSampleId :
 AR1248CCC500



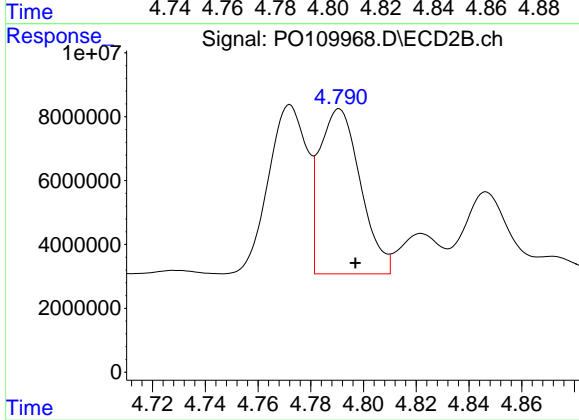
#3 AR-1016-1

R.T.: 4.772 min
 Delta R.T.: -0.006 min
 Response: 53592066
 Conc: 343.16 ng/ml



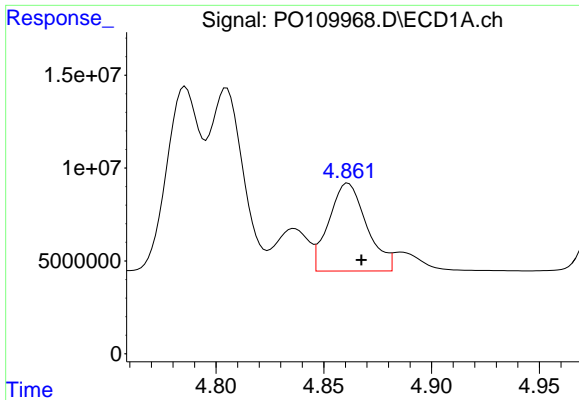
#4 AR-1016-2

R.T.: 4.805 min
 Delta R.T.: -0.006 min
 Response: 105394900
 Conc: 250.33 ng/ml



#4 AR-1016-2

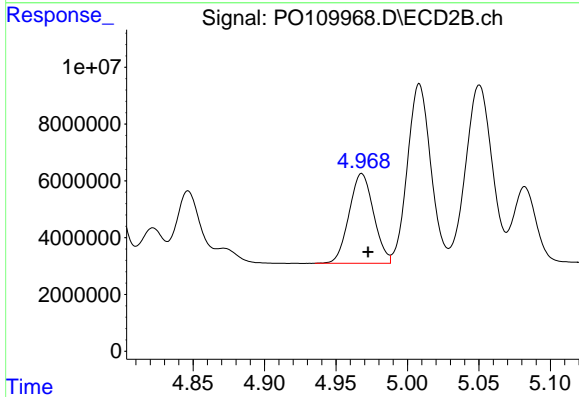
R.T.: 4.791 min
 Delta R.T.: -0.006 min
 Response: 5555423
 Conc: 256.69 ng/ml



#5 AR-1016-3

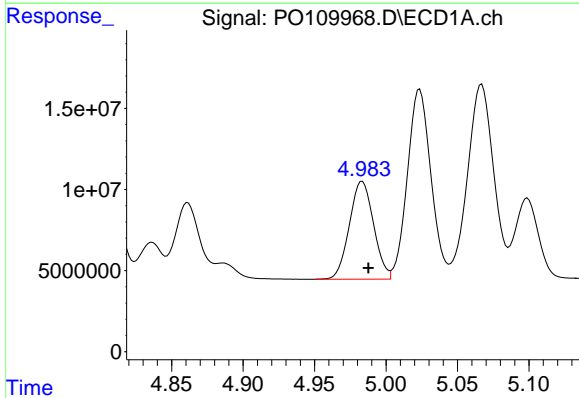
R.T.: 4.861 min
 Delta R.T.: -0.006 min
 Response: 57722855
 Conc: 195.13 ng/ml

Instrument :
 ECD_O
 ClientSampleId :
 AR1248CCC500



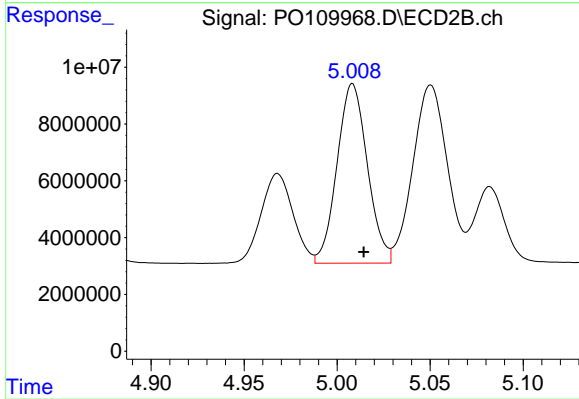
#5 AR-1016-3

R.T.: 4.968 min
 Delta R.T.: -0.004 min
 Response: 37674457
 Conc: 315.40 ng/ml



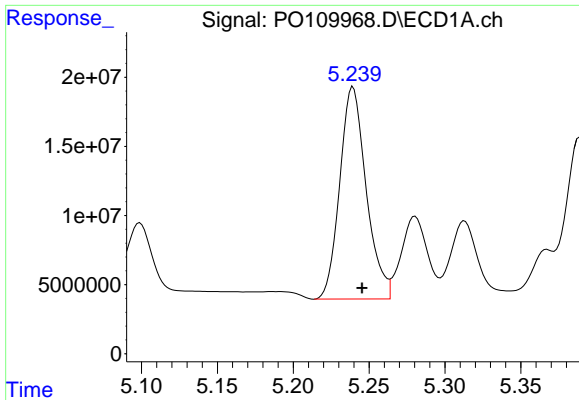
#6 AR-1016-4

R.T.: 4.983 min
 Delta R.T.: -0.004 min
 Response: 71124146
 Conc: 306.86 ng/ml



#6 AR-1016-4

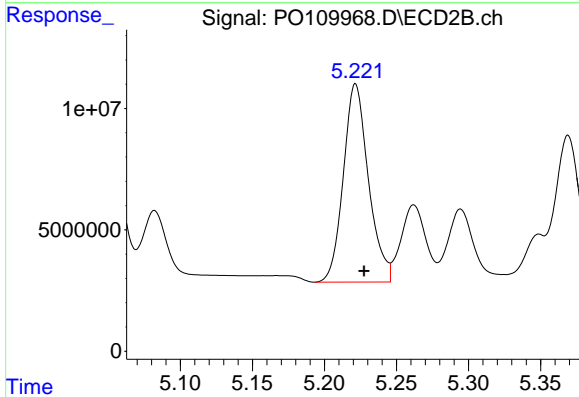
R.T.: 5.008 min
 Delta R.T.: -0.006 min
 Response: 71741874
 Conc: 689.36 ng/ml



#7 AR-1016-5

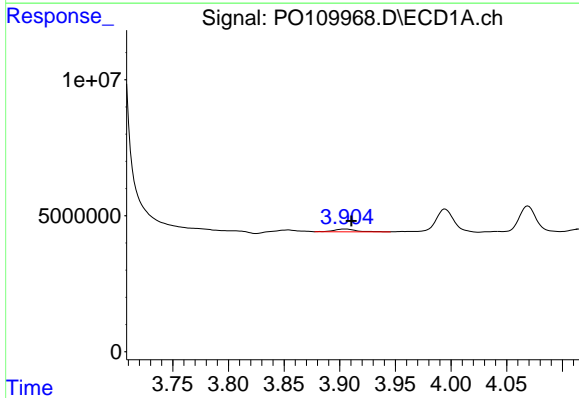
R.T.: 5.239 min
 Delta R.T.: -0.006 min
 Response: 186350070
 Conc: 721.64 ng/ml

Instrument :
 ECD_O
 ClientSampleId :
 AR1248CCC500



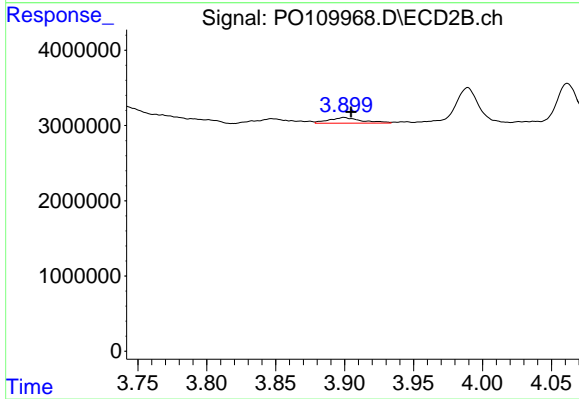
#7 AR-1016-5

R.T.: 5.222 min
 Delta R.T.: -0.006 min
 Response: 99057149
 Conc: 727.01 ng/ml



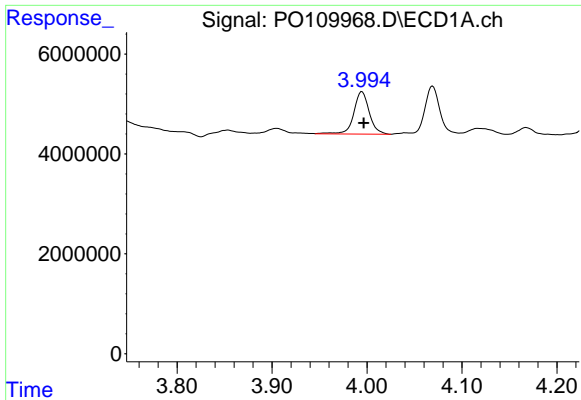
#8 AR-1221-1

R.T.: 3.905 min
 Delta R.T.: -0.006 min
 Response: 1357958
 Conc: 10.30 ng/ml



#8 AR-1221-1

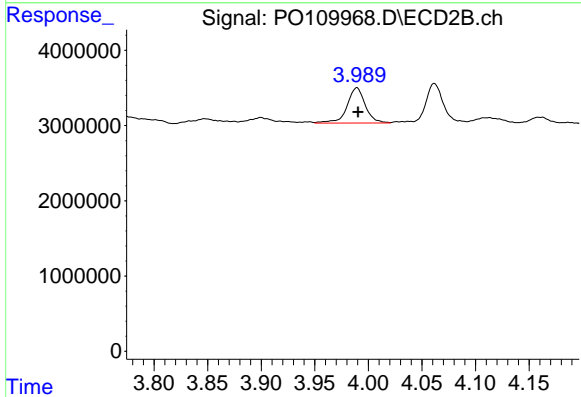
R.T.: 3.900 min
 Delta R.T.: -0.005 min
 Response: 1269828
 Conc: 18.54 ng/ml



#9 AR-1221-2

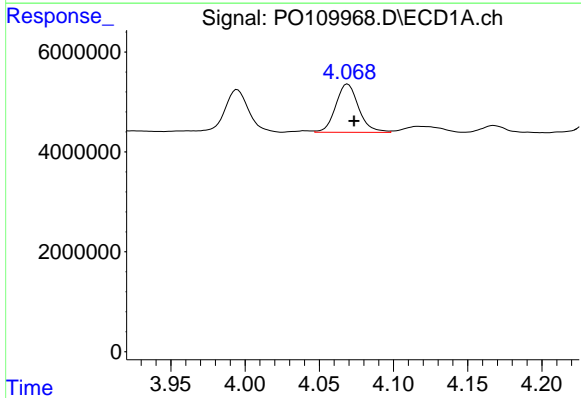
R.T.: 3.995 min
 Delta R.T.: -0.002 min
 Response: 9605607
 Conc: 97.32 ng/ml

Instrument :
 ECD_O
 ClientSampleId :
 AR1248CCC500



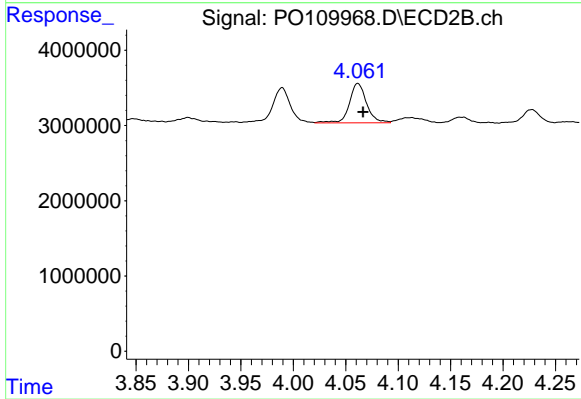
#9 AR-1221-2

R.T.: 3.989 min
 Delta R.T.: -0.001 min
 Response: 5572028
 Conc: 108.53 ng/ml



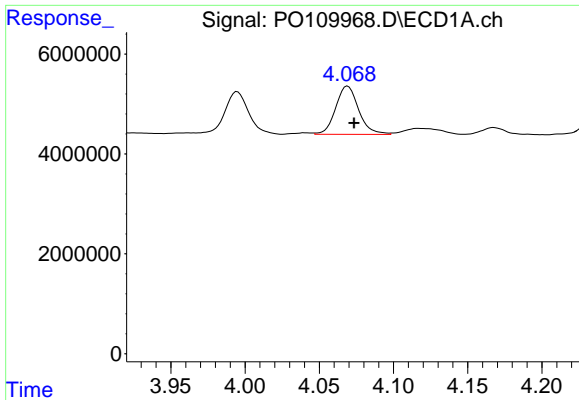
#10 AR-1221-3

R.T.: 4.069 min
 Delta R.T.: -0.004 min
 Response: 10453579
 Conc: 38.74 ng/ml



#10 AR-1221-3

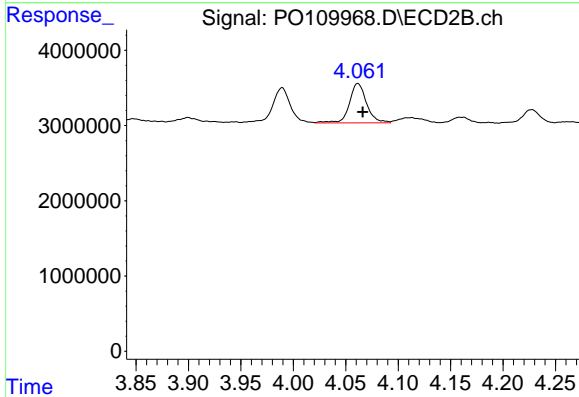
R.T.: 4.062 min
 Delta R.T.: -0.005 min
 Response: 5964579
 Conc: 41.01 ng/ml



#11 AR-1232-1

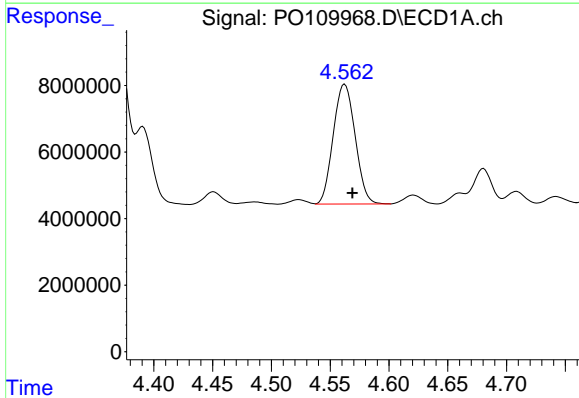
R.T.: 4.069 min
 Delta R.T.: -0.004 min
 Response: 10453579
 Conc: 50.03 ng/ml

Instrument :
 ECD_O
 ClientSampleId :
 AR1248CCC500



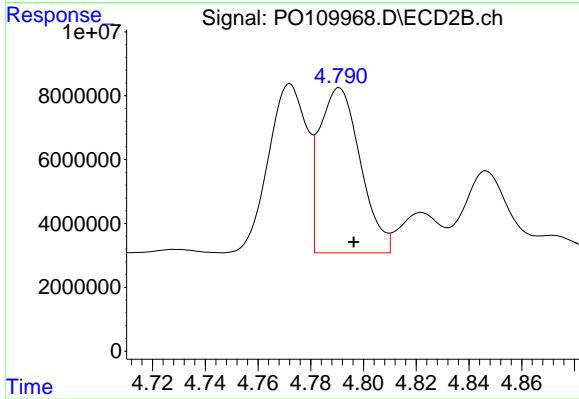
#11 AR-1232-1

R.T.: 4.062 min
 Delta R.T.: -0.005 min
 Response: 5964579
 Conc: 53.51 ng/ml



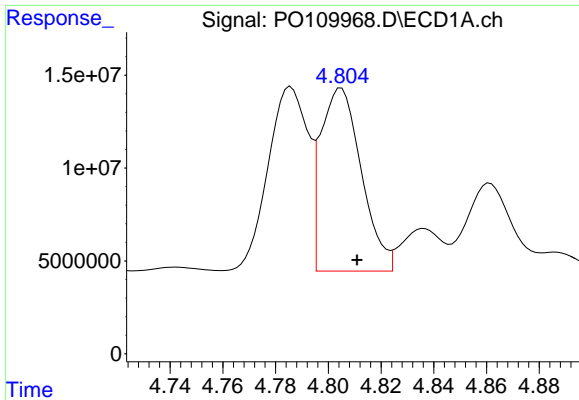
#12 AR-1232-2

R.T.: 4.562 min
 Delta R.T.: -0.006 min
 Response: 46686675
 Conc: 402.18 ng/ml



#12 AR-1232-2

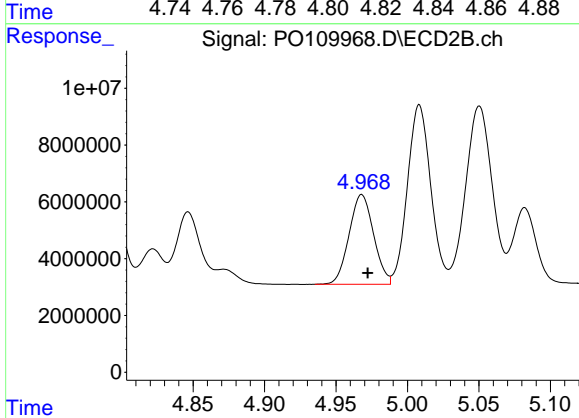
R.T.: 4.791 min
 Delta R.T.: -0.006 min
 Response: 55555423
 Conc: 537.72 ng/ml



#13 AR-1232-3

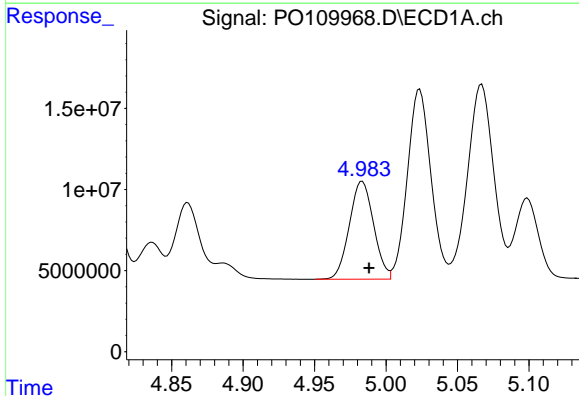
R.T.: 4.805 min
 Delta R.T.: -0.006 min
 Response: 105394900
 Conc: 521.92 ng/ml

Instrument :
 ECD_O
 ClientSampleId :
 AR1248CCC500



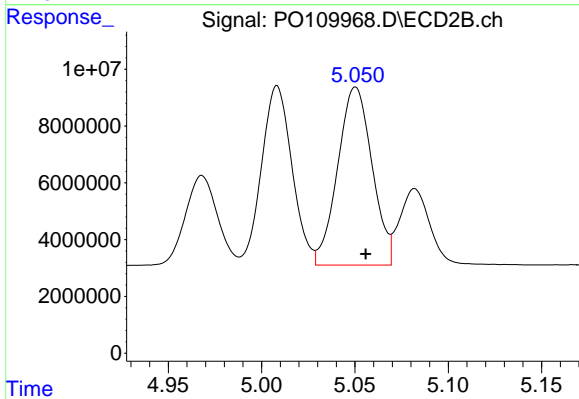
#13 AR-1232-3

R.T.: 4.968 min
 Delta R.T.: -0.004 min
 Response: 37674457
 Conc: 663.61 ng/ml



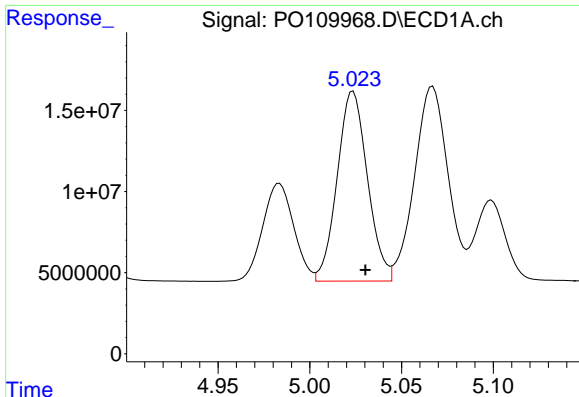
#14 AR-1232-4

R.T.: 4.983 min
 Delta R.T.: -0.005 min
 Response: 71124146
 Conc: 639.49 ng/ml



#14 AR-1232-4

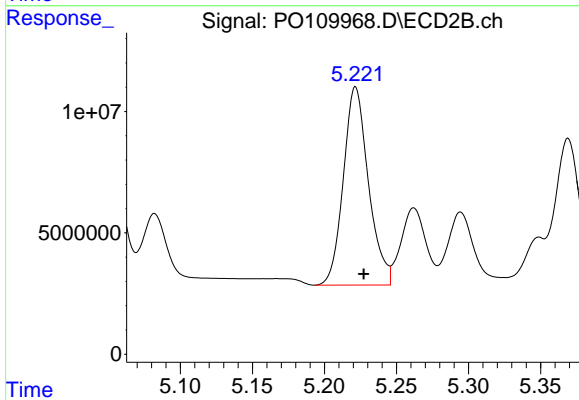
R.T.: 5.050 min
 Delta R.T.: -0.005 min
 Response: 80423991
 Conc: 1465.06 ng/ml



#15 AR-1232-5

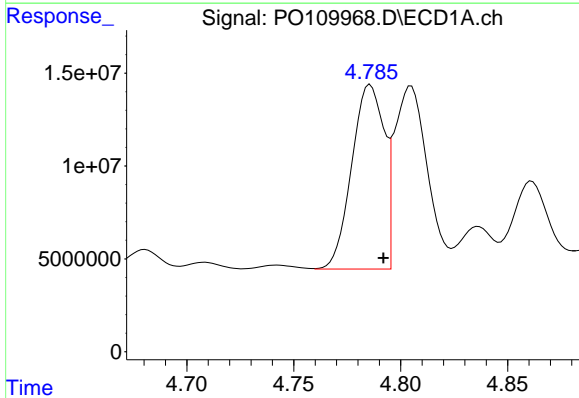
R.T.: 5.024 min
 Delta R.T.: -0.007 min
 Response: 134205431
 Conc: 1643.29 ng/ml

Instrument :
 ECD_O
 ClientSampleId :
 AR1248CCC500



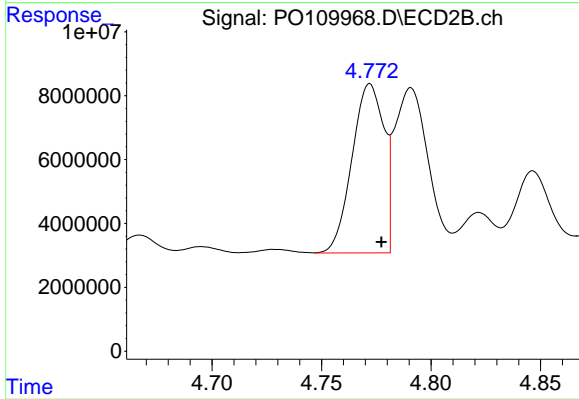
#15 AR-1232-5

R.T.: 5.222 min
 Delta R.T.: -0.006 min
 Response: 99057149
 Conc: 1684.50 ng/ml



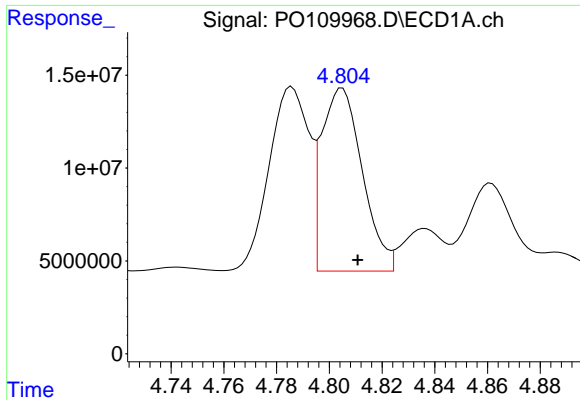
#16 AR-1242-1

R.T.: 4.786 min
 Delta R.T.: -0.006 min
 Response: 104401827
 Conc: 398.84 ng/ml



#16 AR-1242-1

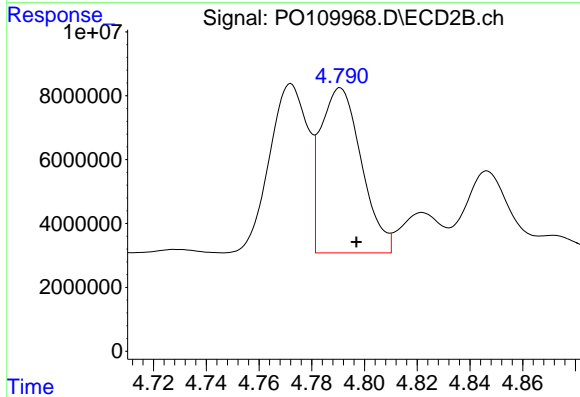
R.T.: 4.772 min
 Delta R.T.: -0.005 min
 Response: 53592066
 Conc: 404.94 ng/ml



#17 AR-1242-2

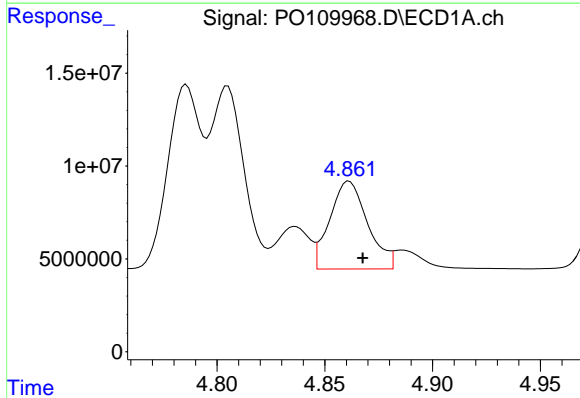
R.T.: 4.805 min
 Delta R.T.: -0.006 min
 Response: 105394900
 Conc: 296.01 ng/ml

Instrument :
 ECD_O
 ClientSampleId :
 AR1248CCC500



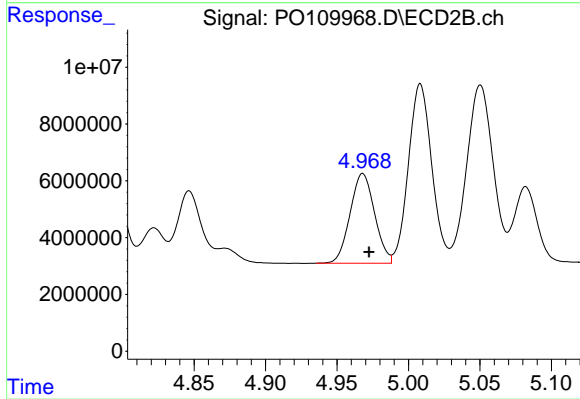
#17 AR-1242-2

R.T.: 4.791 min
 Delta R.T.: -0.006 min
 Response: 5555423
 Conc: 306.06 ng/ml



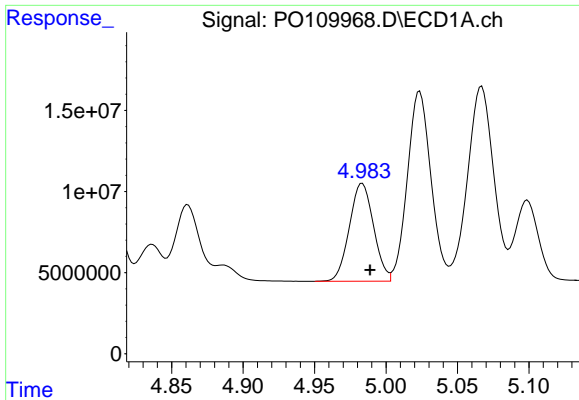
#18 AR-1242-3

R.T.: 4.861 min
 Delta R.T.: -0.006 min
 Response: 57722855
 Conc: 229.63 ng/ml



#18 AR-1242-3

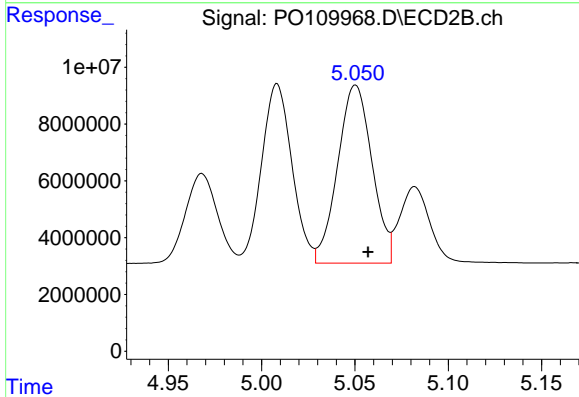
R.T.: 4.968 min
 Delta R.T.: -0.004 min
 Response: 37674457
 Conc: 377.22 ng/ml



#19 AR-1242-4

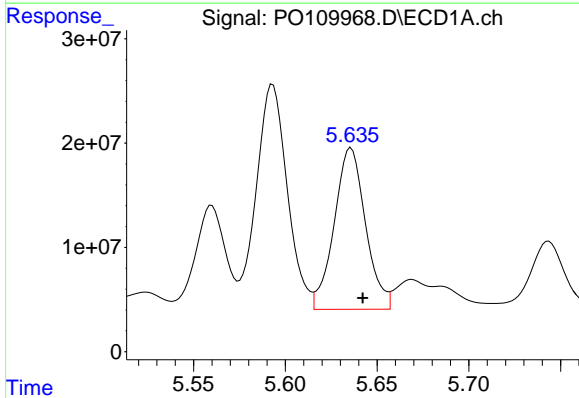
R.T.: 4.983 min
 Delta R.T.: -0.006 min
 Response: 71124146
 Conc: 362.04 ng/ml

Instrument :
 ECD_O
 ClientSampleId :
 AR1248CCC500



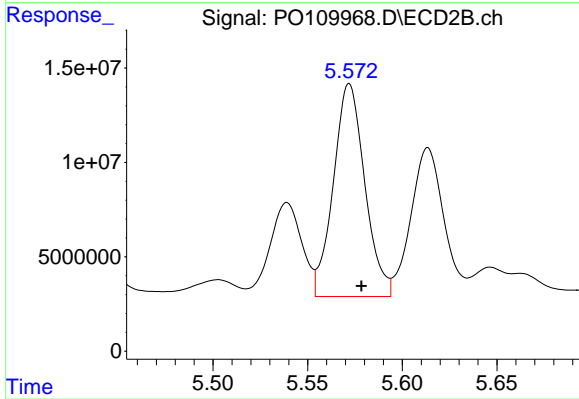
#19 AR-1242-4

R.T.: 5.050 min
 Delta R.T.: -0.007 min
 Response: 80423991
 Conc: 752.20 ng/ml



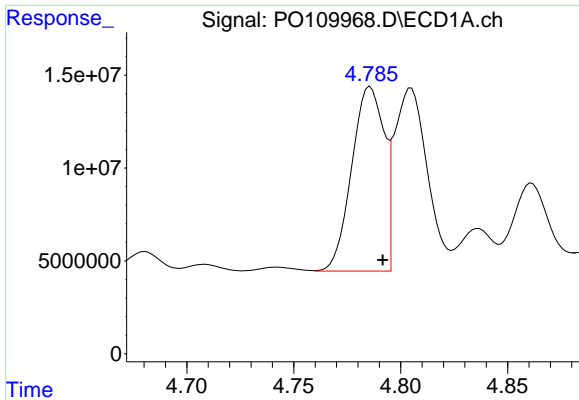
#20 AR-1242-5

R.T.: 5.636 min
 Delta R.T.: -0.006 min
 Response: 184250858
 Conc: 859.47 ng/ml



#20 AR-1242-5

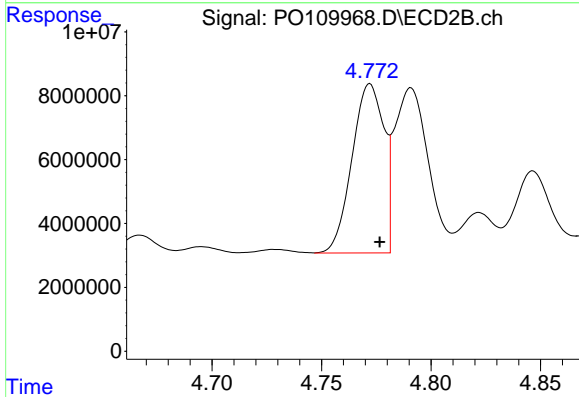
R.T.: 5.572 min
 Delta R.T.: -0.006 min
 Response: 130255977
 Conc: 1036.20 ng/ml



#21 AR-1248-1

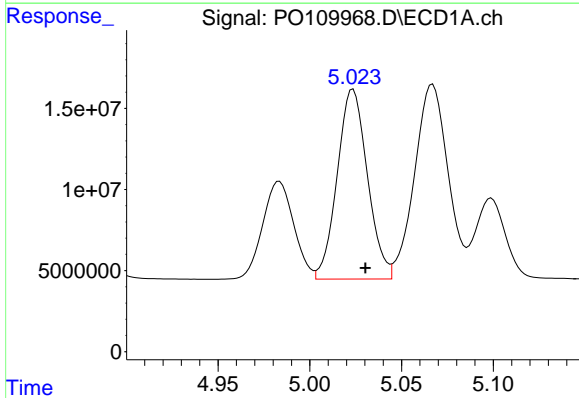
R.T.: 4.786 min
 Delta R.T.: -0.006 min
 Response: 104401827
 Conc: 523.29 ng/ml

Instrument :
 ECD_O
 ClientSampleId :
 AR1248CCC500



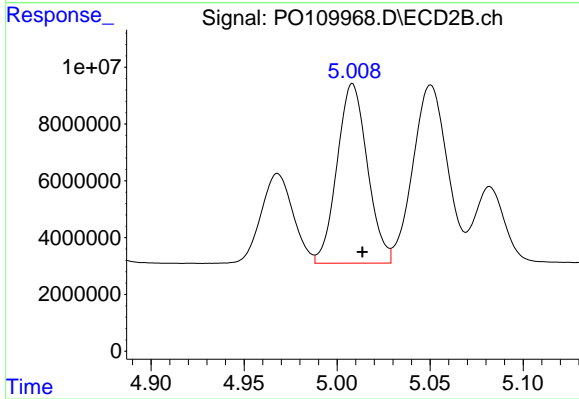
#21 AR-1248-1

R.T.: 4.772 min
 Delta R.T.: -0.005 min
 Response: 53592066
 Conc: 533.11 ng/ml



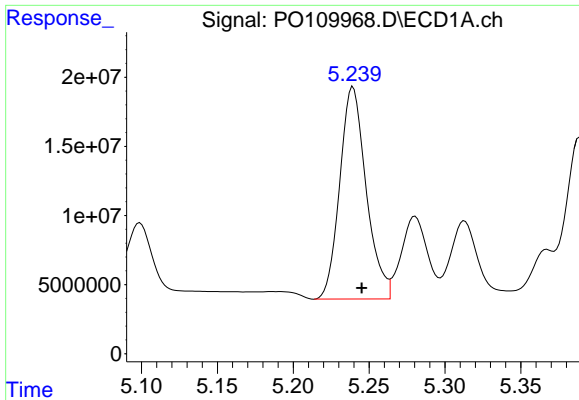
#22 AR-1248-2

R.T.: 5.024 min
 Delta R.T.: -0.007 min
 Response: 134205431
 Conc: 482.25 ng/ml



#22 AR-1248-2

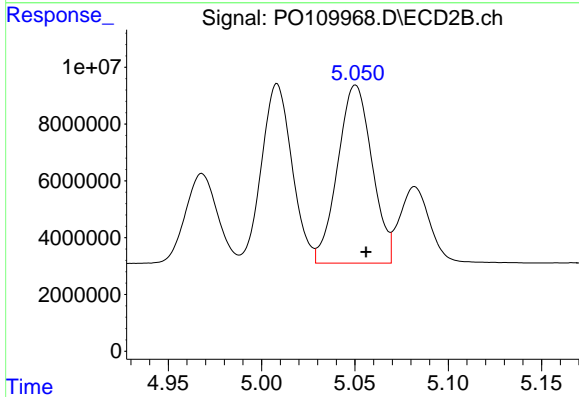
R.T.: 5.008 min
 Delta R.T.: -0.005 min
 Response: 71741874
 Conc: 493.14 ng/ml



#23 AR-1248-3

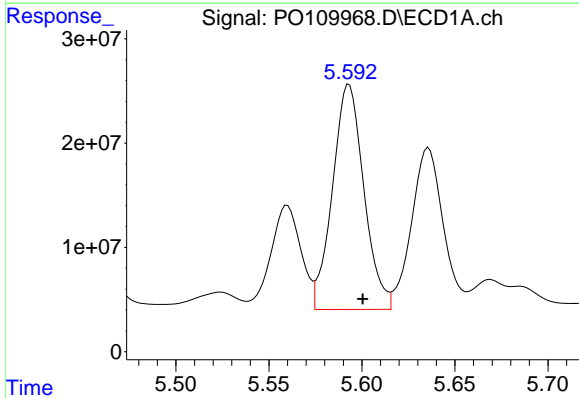
R.T.: 5.239 min
 Delta R.T.: -0.006 min
 Response: 186350070
 Conc: 533.38 ng/ml

Instrument :
 ECD_O
 ClientSampleId :
 AR1248CCC500



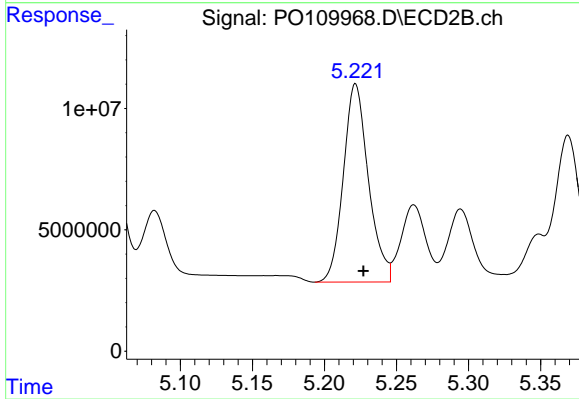
#23 AR-1248-3

R.T.: 5.050 min
 Delta R.T.: -0.006 min
 Response: 80423991
 Conc: 518.84 ng/ml



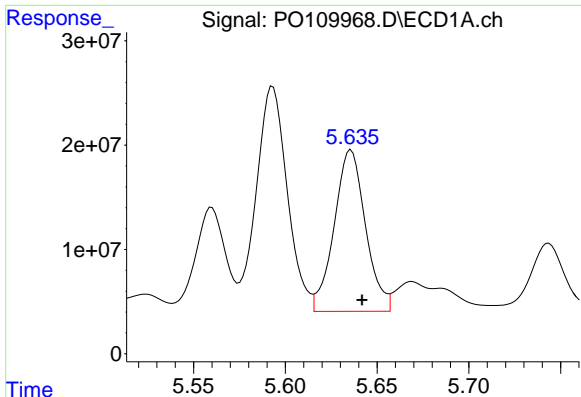
#24 AR-1248-4

R.T.: 5.593 min
 Delta R.T.: -0.007 min
 Response: 253846961
 Conc: 532.07 ng/ml



#24 AR-1248-4

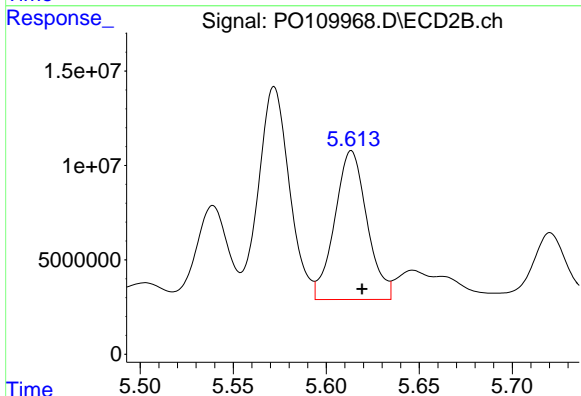
R.T.: 5.222 min
 Delta R.T.: -0.005 min
 Response: 99057149
 Conc: 547.89 ng/ml



#25 AR-1248-5

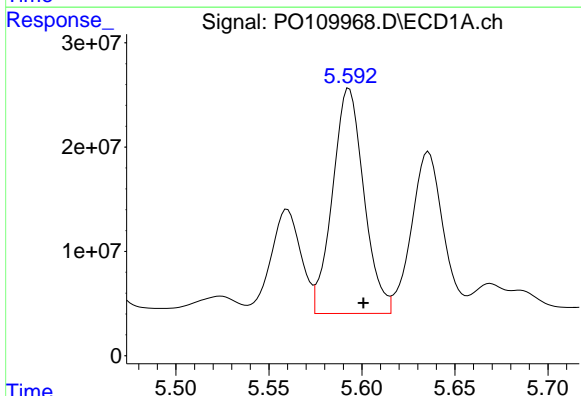
R.T.: 5.636 min
 Delta R.T.: -0.006 min
 Response: 184250858
 Conc: 537.94 ng/ml

Instrument :
 ECD_O
 ClientSampleId :
 AR1248CCC500



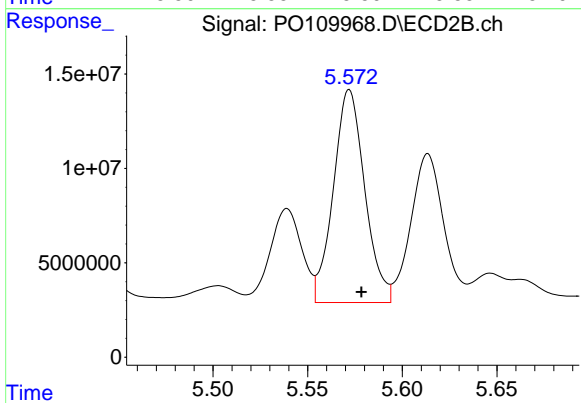
#25 AR-1248-5

R.T.: 5.614 min
 Delta R.T.: -0.006 min
 Response: 95315006
 Conc: 553.50 ng/ml



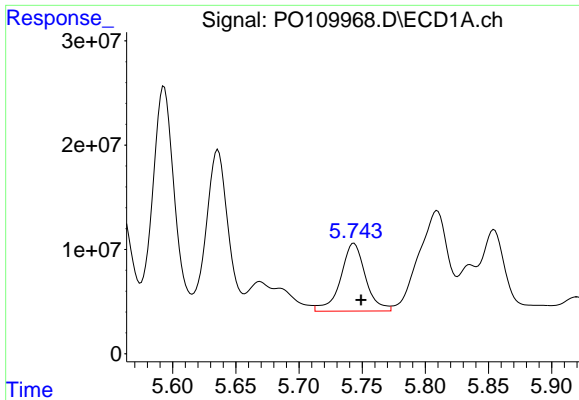
#26 AR-1254-1

R.T.: 5.593 min
 Delta R.T.: -0.008 min
 Response: 253846961
 Conc: 492.33 ng/ml



#26 AR-1254-1

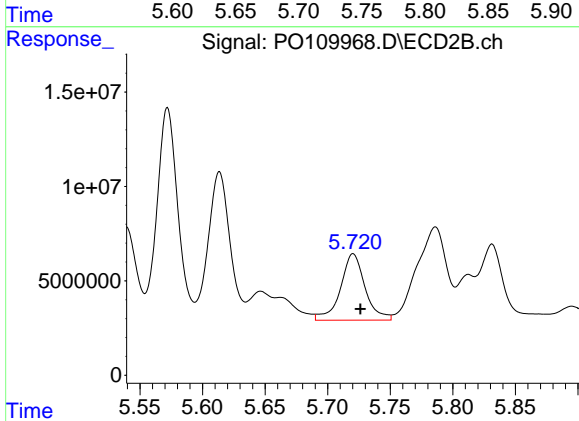
R.T.: 5.572 min
 Delta R.T.: -0.006 min
 Response: 130255977
 Conc: 498.04 ng/ml



#27 AR-1254-2

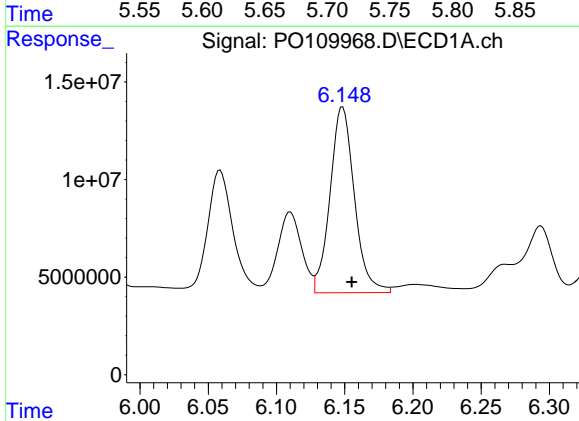
R.T.: 5.744 min
 Delta R.T.: -0.006 min
 Response: 89217547
 Conc: 198.10 ng/ml

Instrument :
 ECD_O
 ClientSampleId :
 AR1248CCC500



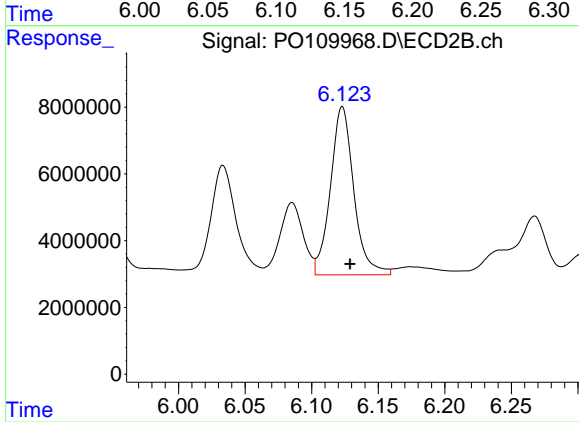
#27 AR-1254-2

R.T.: 5.720 min
 Delta R.T.: -0.006 min
 Response: 48078131
 Conc: 204.97 ng/ml



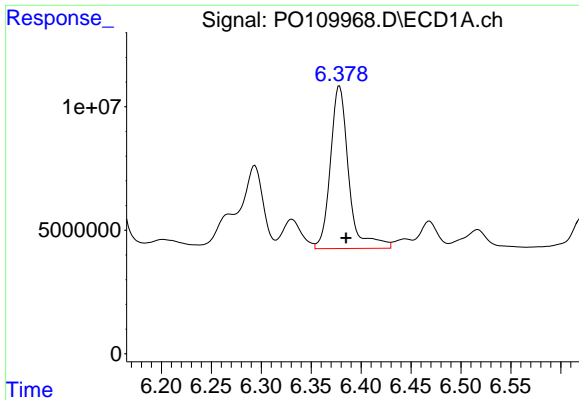
#28 AR-1254-3

R.T.: 6.148 min
 Delta R.T.: -0.007 min
 Response: 118377090
 Conc: 165.34 ng/ml



#28 AR-1254-3

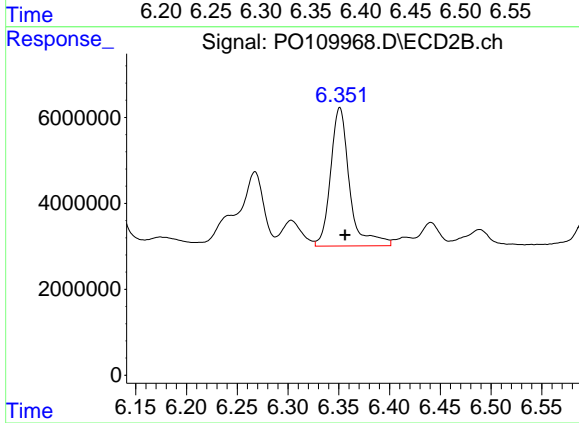
R.T.: 6.123 min
 Delta R.T.: -0.006 min
 Response: 61666050
 Conc: 172.88 ng/ml



#29 AR-1254-4

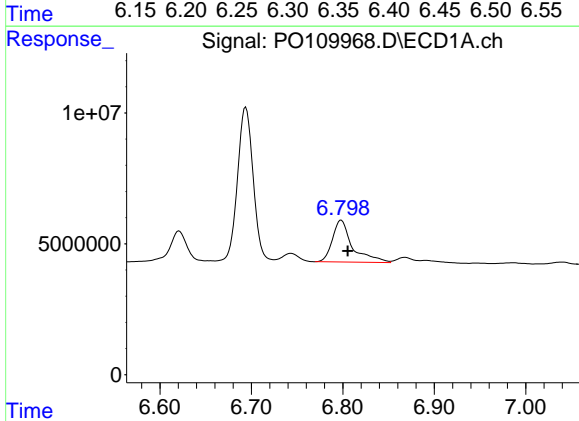
R.T.: 6.378 min
Delta R.T.: -0.006 min
Response: 83977368
Conc: 200.52 ng/ml

Instrument :
ECD_O
ClientSampleId :
AR1248CCC500



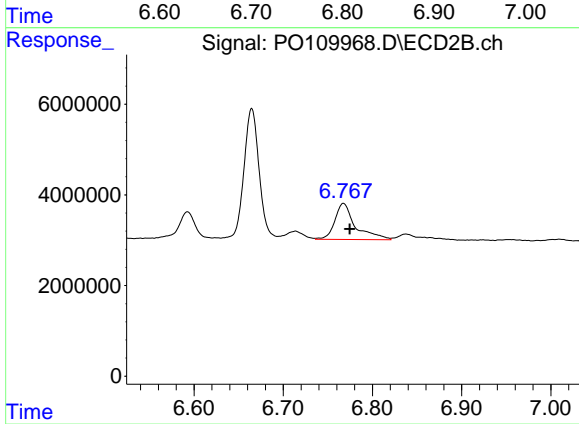
#29 AR-1254-4

R.T.: 6.351 min
Delta R.T.: -0.005 min
Response: 41913840
Conc: 217.03 ng/ml



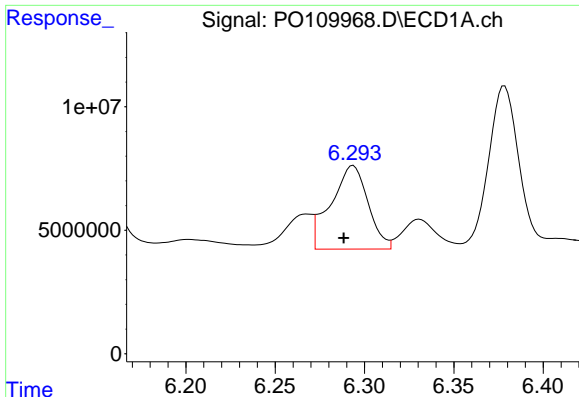
#30 AR-1254-5

R.T.: 6.798 min
Delta R.T.: -0.007 min
Response: 24227129
Conc: 38.83 ng/ml



#30 AR-1254-5

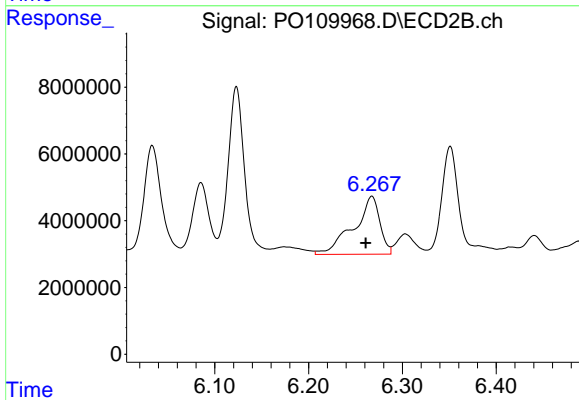
R.T.: 6.768 min
Delta R.T.: -0.007 min
Response: 12806247
Conc: 43.16 ng/ml



#31 AR-1260-1

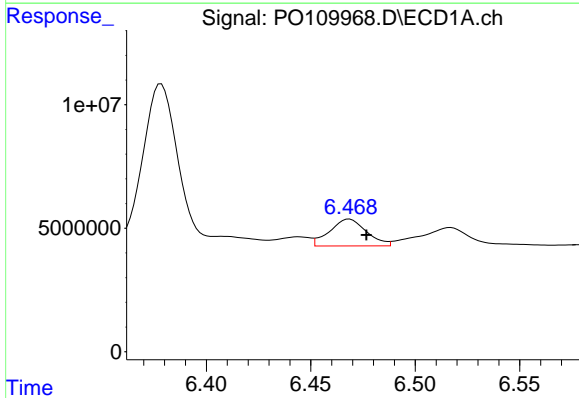
R.T.: 6.294 min
 Delta R.T.: 0.005 min
 Response: 48973722
 Conc: 105.06 ng/ml

Instrument :
 ECD_O
 ClientSampleId :
 AR1248CCC500



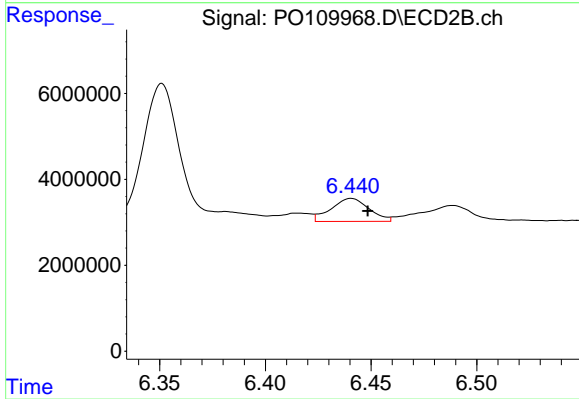
#31 AR-1260-1

R.T.: 6.267 min
 Delta R.T.: 0.007 min
 Response: 33679348
 Conc: 142.16 ng/ml



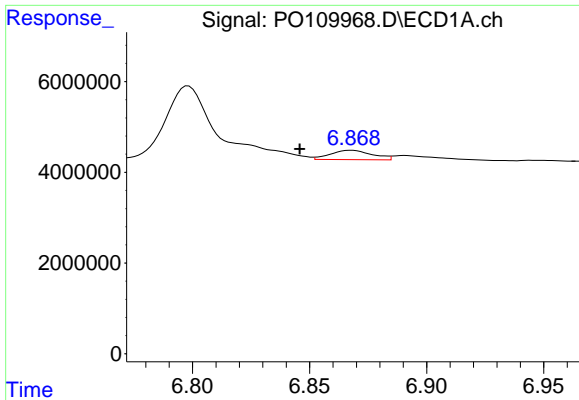
#32 AR-1260-2

R.T.: 6.468 min
 Delta R.T.: -0.008 min
 Response: 13278921
 Conc: 23.50 ng/ml



#32 AR-1260-2

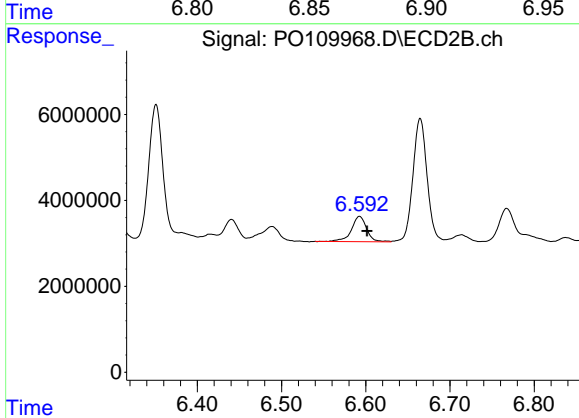
R.T.: 6.441 min
 Delta R.T.: -0.008 min
 Response: 6689589
 Conc: 24.31 ng/ml



#33 AR-1260-3

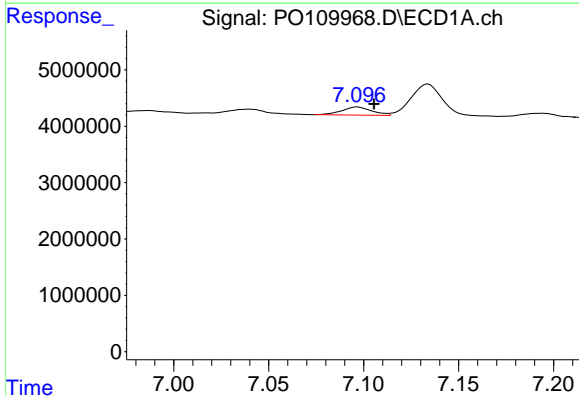
R.T.: 6.868 min
 Delta R.T.: 0.022 min
 Response: 2566787
 Conc: 5.40 ng/ml

Instrument :
 ECD_O
 ClientSampleId :
 AR1248CCC500



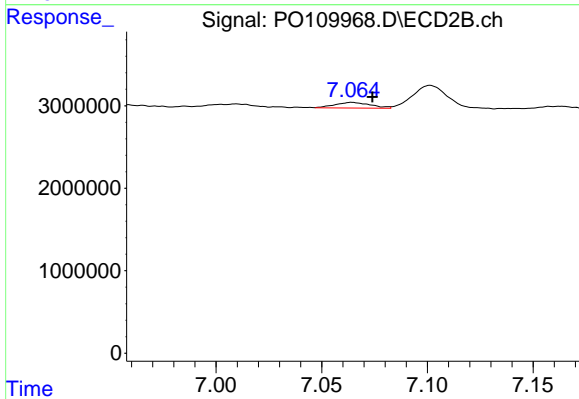
#33 AR-1260-3

R.T.: 6.593 min
 Delta R.T.: -0.009 min
 Response: 7346001
 Conc: 28.80 ng/ml



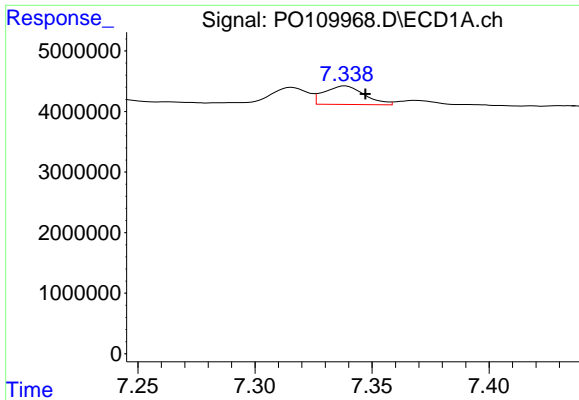
#34 AR-1260-4

R.T.: 7.097 min
 Delta R.T.: -0.009 min
 Response: 1585576
 Conc: 3.67 ng/ml



#34 AR-1260-4

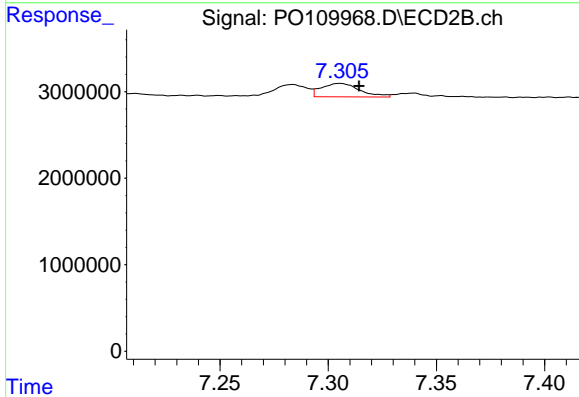
R.T.: 7.064 min
 Delta R.T.: -0.010 min
 Response: 792853
 Conc: 3.85 ng/ml



#35 AR-1260-5

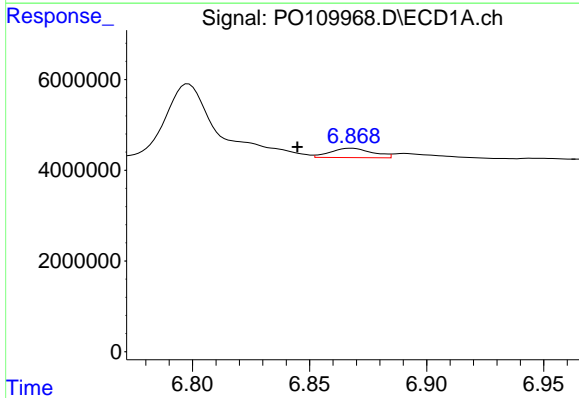
R.T.: 7.339 min
 Delta R.T.: -0.008 min
 Response: 3674935
 Conc: 3.70 ng/ml

Instrument :
 ECD_O
 ClientSampleId :
 AR1248CCC500



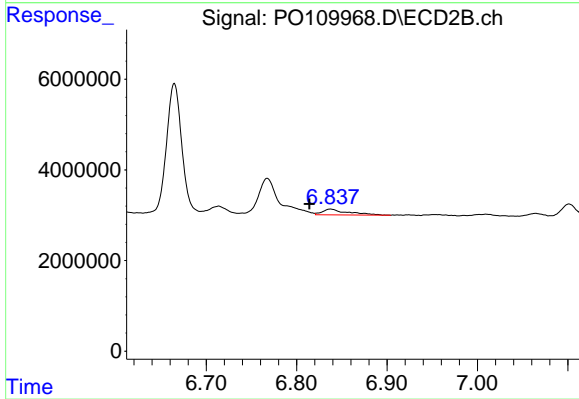
#35 AR-1260-5

R.T.: 7.305 min
 Delta R.T.: -0.009 min
 Response: 1910876
 Conc: 4.27 ng/ml



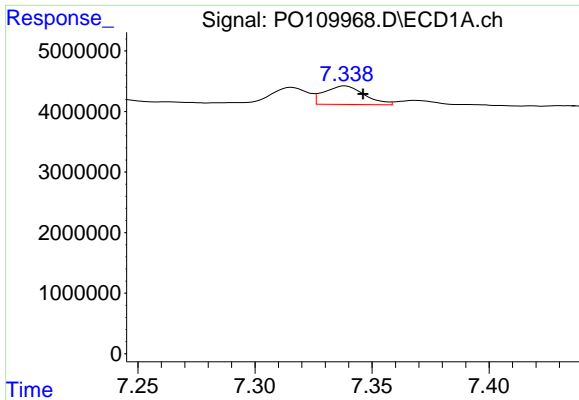
#36 AR-1262-1

R.T.: 6.868 min
 Delta R.T.: 0.023 min
 Response: 2566787
 Conc: 3.85 ng/ml



#36 AR-1262-1

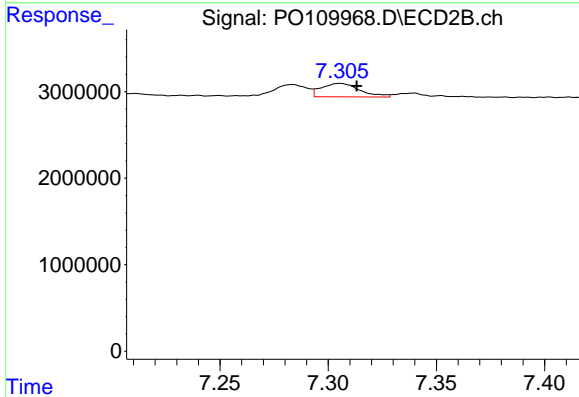
R.T.: 6.837 min
 Delta R.T.: 0.023 min
 Response: 2556439
 Conc: 8.06 ng/ml



#37 AR-1262-2

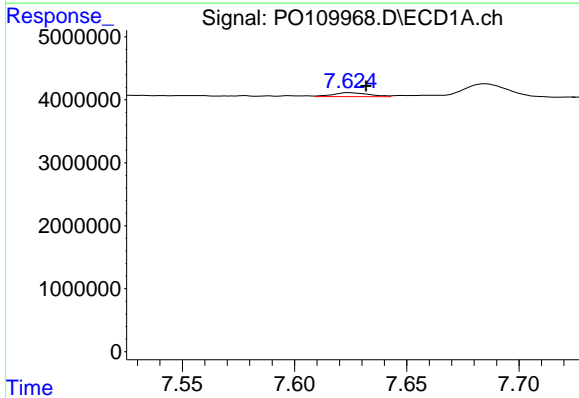
R.T.: 7.339 min
Delta R.T.: -0.007 min
Response: 3674935
Conc: 3.25 ng/ml

Instrument :
ECD_O
ClientSampleId :
AR1248CCC500



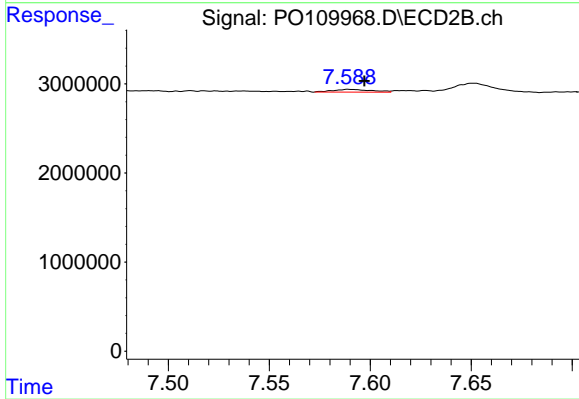
#37 AR-1262-2

R.T.: 7.305 min
Delta R.T.: -0.008 min
Response: 1910876
Conc: 3.83 ng/ml



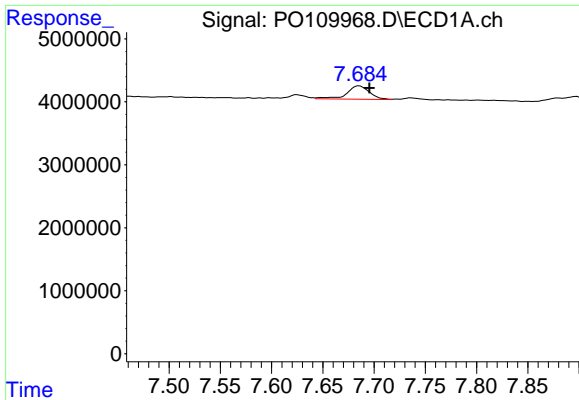
#38 AR-1262-3

R.T.: 7.624 min
Delta R.T.: -0.007 min
Response: 703024
Conc: 1.57 ng/ml



#38 AR-1262-3

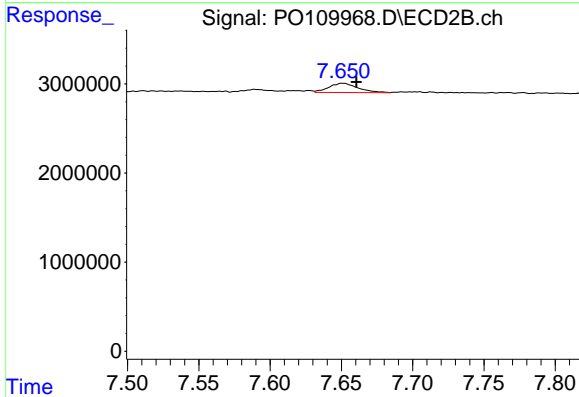
R.T.: 7.590 min
Delta R.T.: -0.007 min
Response: 415150
Conc: 2.12 ng/ml



#39 AR-1262-4

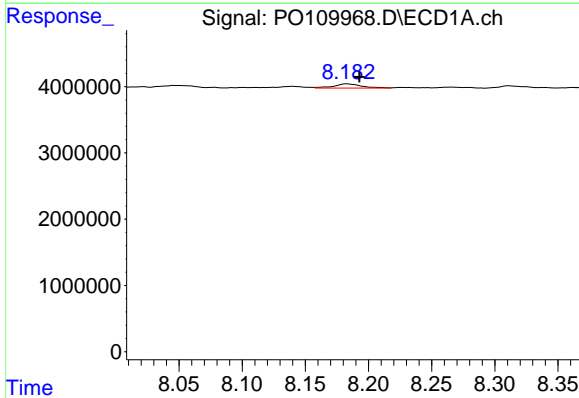
R.T.: 7.685 min
 Delta R.T.: -0.010 min
 Response: 3269479
 Conc: 3.94 ng/ml

Instrument :
 ECD_O
 ClientSampleId :
 AR1248CCC500



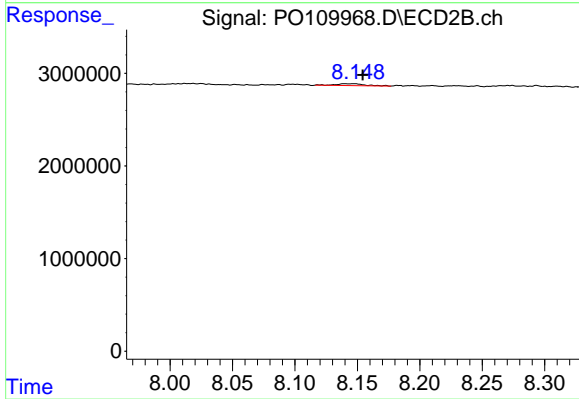
#39 AR-1262-4

R.T.: 7.651 min
 Delta R.T.: -0.009 min
 Response: 1492546
 Conc: 4.21 ng/ml



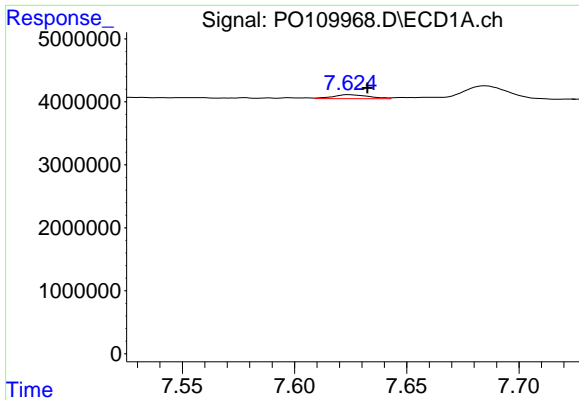
#40 AR-1262-5

R.T.: 8.183 min
 Delta R.T.: -0.010 min
 Response: 969111
 Conc: 2.60 ng/ml



#40 AR-1262-5

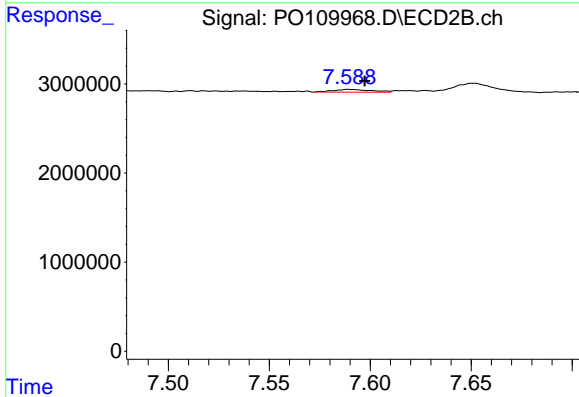
R.T.: 8.147 min
 Delta R.T.: -0.007 min
 Response: 319655
 Conc: 2.23 ng/ml



#41 AR-1268-1

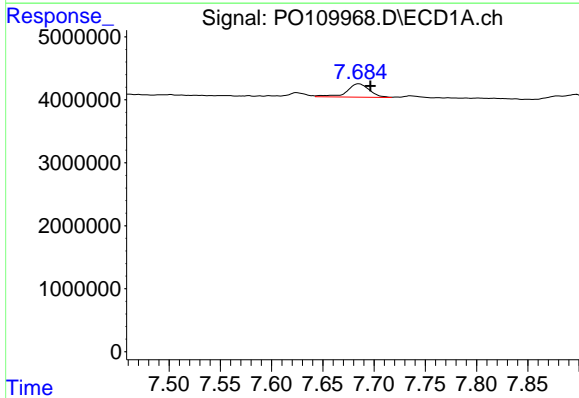
R.T.: 7.624 min
 Delta R.T.: -0.008 min
 Response: 703024
 Conc: 0.53 ng/ml

Instrument :
 ECD_O
 ClientSampleId :
 AR1248CCC500



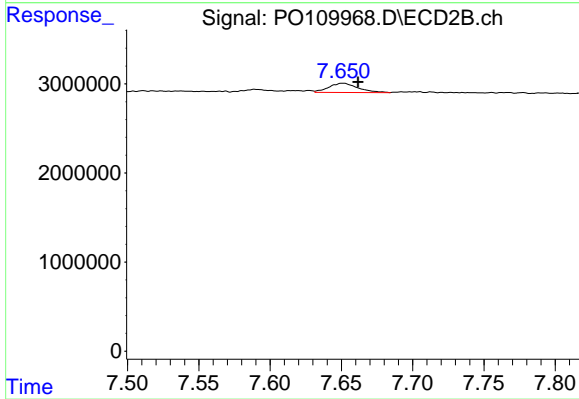
#41 AR-1268-1

R.T.: 7.590 min
 Delta R.T.: -0.008 min
 Response: 415150
 Conc: 0.73 ng/ml



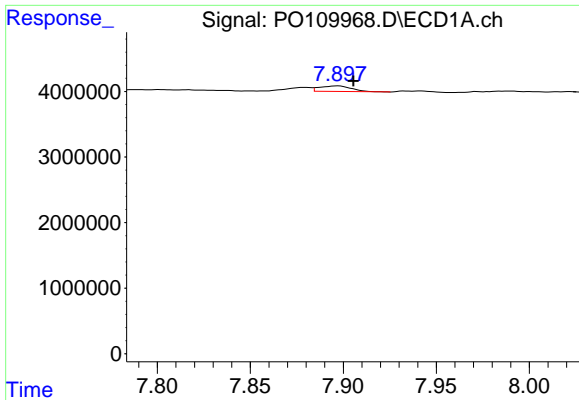
#42 AR-1268-2

R.T.: 7.685 min
 Delta R.T.: -0.011 min
 Response: 3269479
 Conc: 2.70 ng/ml



#42 AR-1268-2

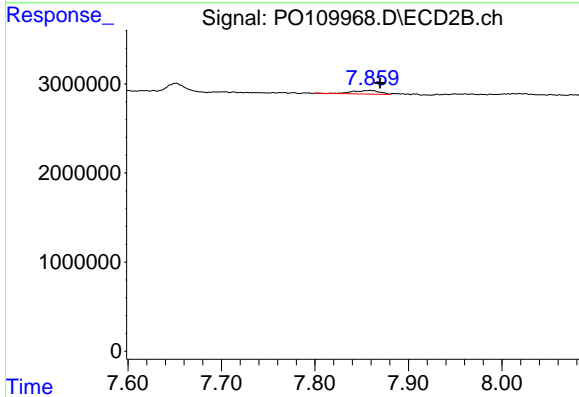
R.T.: 7.651 min
 Delta R.T.: -0.010 min
 Response: 1492546
 Conc: 2.84 ng/ml



#43 AR-1268-3

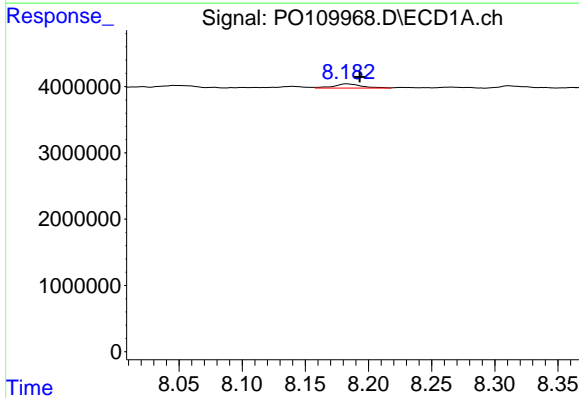
R.T.: 7.897 min
 Delta R.T.: -0.008 min
 Response: 1002891
 Conc: 0.98 ng/ml

Instrument :
 ECD_O
 ClientSampleId :
 AR1248CCC500



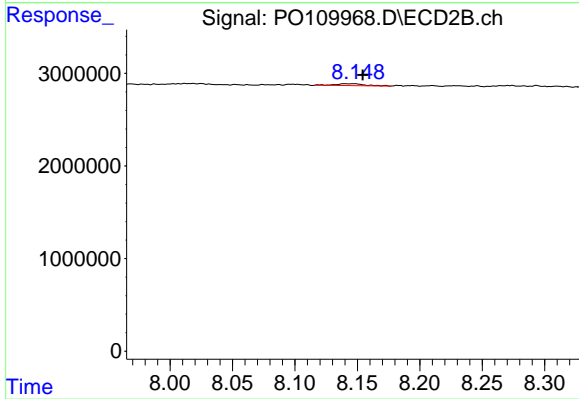
#43 AR-1268-3

R.T.: 7.859 min
 Delta R.T.: -0.010 min
 Response: 845411
 Conc: 1.98 ng/ml



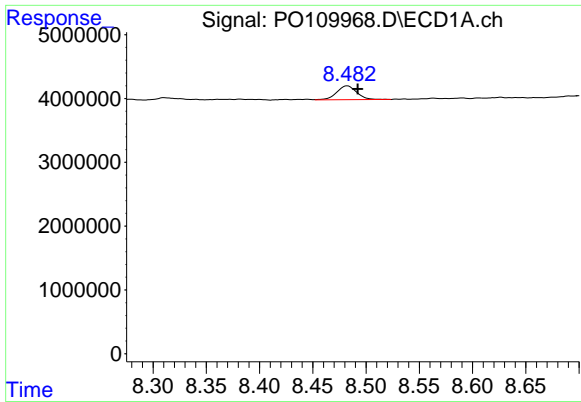
#44 AR-1268-4

R.T.: 8.183 min
 Delta R.T.: -0.010 min
 Response: 969111
 Conc: 2.28 ng/ml



#44 AR-1268-4

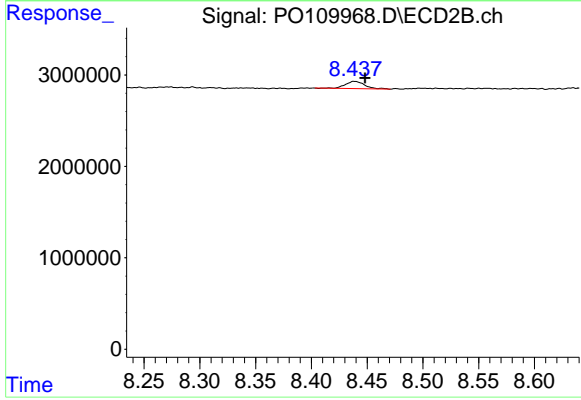
R.T.: 8.147 min
 Delta R.T.: -0.007 min
 Response: 319655
 Conc: 1.98 ng/ml



#45 AR-1268-5

R.T.: 8.482 min
 Delta R.T.: -0.010 min
 Response: 2839186
 Conc: 0.94 ng/ml

Instrument :
 ECD_O
 ClientSampleId :
 AR1248CCC500



#45 AR-1268-5

R.T.: 8.439 min
 Delta R.T.: -0.009 min
 Response: 963910
 Conc: 0.88 ng/ml