

Data Path : Z:\pestpcbsrv\HPCHEM1\ECD\_0\Data\P0031921\  
 Data File : P0076367.D  
 Signal(s) : Signal #1: ECD1A.CH Signal #2: ECD2B.CH  
 Acq On : 19 Mar 2021 14:43  
 Operator : DD\AJ  
 Sample : M1720-04MSD  
 Misc :  
 ALS Vial : 16 Sample Multiplier: 1

Instrument :  
 ECD\_0  
 ClientSampleId :  
 SB-3A-(0.5-1.0)MSD

Integration File signal 1: autoint1.e  
 Integration File signal 2: autoint2.e  
 Quant Time: Mar 19 22:34:54 2021  
 Quant Method : Z:\pestpcbsrv\HPCHEM1\ECD\_0\methods\P0031521.M  
 Quant Title : GC EXTRACTABLES  
 QLast Update : Tue Mar 16 07:18:57 2021  
 Response via : Initial Calibration  
 Integrator: ChemStation 6890 Scale Mode: Small noise peaks clipped

Volume Inj. : 2 µl  
 Signal #1 Phase : ZB-MR1 Signal #2 Phase: ZB-MR2  
 Signal #1 Info : 30Mx0.32mmx 0.50µ Signal #2 Info : 30M x 0.32mm x 0.25µm

Compound	RT#1	RT#2	Resp#1	Resp#2	ng/ml	ng/ml
System Monitoring Compounds						
1) SA Tetrachlo...	4.919	3.932	1398856	947715	24.624	22.715
2) SA Decachlor...	10.915	9.195	1067893	898513	27.764	23.400
Target Compounds						
3) L1 AR-1016-1	6.242	5.179	1069840	746488	649.285	637.832
4) L1 AR-1016-2	6.265	5.198	1641461	1345071	642.395	610.567
5) L1 AR-1016-3	6.332	5.389	1038730	647631	659.624	629.860
6) L1 AR-1016-4	6.439	5.439	825280	566114	667.195	577.162
7) L1 AR-1016-5	6.754	5.666	779752	660506	607.474	580.364
8) L2 AR-1221-1	5.169	4.187	117035	87176	221.650	197.707
9) L2 AR-1221-2	5.270	4.287	134659	95592	328.765	292.709
10) L2 AR-1221-3	5.357	4.375	613937	449899	457.368	426.754
11) L3 AR-1232-1	5.357	4.375	613937	449899	569.085	526.388
12) L3 AR-1232-2	5.945	5.198	849381	1345071	1442.560	1425.120
13) L3 AR-1232-3	6.265	5.389	1641461	647631	1575.659	1559.279
14) L3 AR-1232-4	6.439	5.484	825280	644836	1690.183	1540.095
15) L3 AR-1232-5	6.536	5.666	656937	660506	1763.792	1500.218
16) L4 AR-1242-1	6.242	5.179	1069840	746488	847.148	841.389
17) L4 AR-1242-2	6.265	5.198	1641461	1345071	828.215	777.121
18) L4 AR-1242-3	6.332	5.389	1038730	647631	819.732	804.022
19) L4 AR-1242-4	6.439	5.484	825280	644836	852.296	742.869
20) L4 AR-1242-5	7.224	6.044	115256	535978	114.719	531.834 #
21) L5 AR-1248-1	6.242	5.179	1069840	746488	1134.776	1086.930
22) L5 AR-1248-2	6.536	5.439	656937	566114	436.100	437.540
23) L5 AR-1248-3	6.754	5.484	779752	644836	449.576	504.486
24) L5 AR-1248-4	7.183	5.666	125953	660506	71.591	449.183 #
25) L5 AR-1248-5	7.224	6.089	115256	79635	65.167	51.492
26) L6 AR-1254-1	7.153	6.044	588994	535978	287.398	234.511
27) L6 AR-1254-2	7.382	6.203	647544	496154	208.377	250.513
28) L6 AR-1254-3	7.766	6.640	337371	910645	106.044	302.335 #
29) L6 AR-1254-4	8.059	6.862	213708	107703	102.002	61.032 #
30) L6 AR-1254-5	8.490	7.287	2178951	1736377	948.741	663.227 #
31) L7 AR-1260-1	7.932	6.758	1491546	1305764	641.517	635.626
32) L7 AR-1260-2	8.198	6.955	1693365	1573852	663.196	648.947
33) L7 AR-1260-3	8.564	7.109	1102747	1432028	556.252	633.179
34) L7 AR-1260-4	8.795	7.590	1325010	1054736	586.508	547.349
35) L7 AR-1260-5	9.119	7.839	2447846	2461017	598.853	556.661
36) L8 AR-1262-1	8.564	7.287	1102747	1736377	372.720	1188.979 #
37) L8 AR-1262-2	9.119	7.839	2447846	2461017	505.647	496.814
38) L8 AR-1262-3	9.449f	8.123	1586471	510641	480.043	237.687 #
39) L8 AR-1262-4	9.501f	8.185	912953	1757850	355.145	464.763 #
40) L8 AR-1262-5	10.179	8.683	600075	567925	364.800	328.073
41) L9 AR-1268-1	9.449f	8.123	1586471	510641	272.347	86.947 #

Data Path : Z:\pestpcbsrv\HPCHEM1\ECD\_0\Data\P0031921\  
 Data File : P0076367.D  
 Signal(s) : Signal #1: ECD1A.CH Signal #2: ECD2B.CH  
 Acq On : 19 Mar 2021 14:43  
 Operator : DD\AJ  
 Sample : M1720-04MSD  
 Misc :  
 ALS Vial : 16 Sample Multiplier: 1

Instrument :  
 ECD\_0  
 ClientSampleId :  
 SB-3A-(0.5-1.0)MSD

Integration File signal 1: autoint1.e  
 Integration File signal 2: autoint2.e  
 Quant Time: Mar 19 22:34:54 2021  
 Quant Method : Z:\pestpcbsrv\HPCHEM1\ECD\_0\methods\P0031521.M  
 Quant Title : GC EXTRACTABLES  
 QLast Update : Tue Mar 16 07:18:57 2021  
 Response via : Initial Calibration  
 Integrator: ChemStation 6890 Scale Mode: Small noise peaks clipped

Volume Inj. : 2 µl  
 Signal #1 Phase : ZB-MR1 Signal #2 Phase: ZB-MR2  
 Signal #1 Info : 30Mx0.32mmx 0.50µ Signal #2 Info : 30M x 0.32mm x 0.25µm

	Compound	RT#1	RT#2	Resp#1	Resp#2	ng/ml	ng/ml
42)	L9 AR-1268-2	9.501f	8.185	912953	1757850	172.097	330.034 #
43)	L9 AR-1268-3	9.744	8.394	43497	43504	9.383	9.173
44)	L9 AR-1268-4	10.179	8.683	600075	567925	344.318	305.607
45)	L9 AR-1268-5	10.586	8.958	207135	188116	15.045	14.096

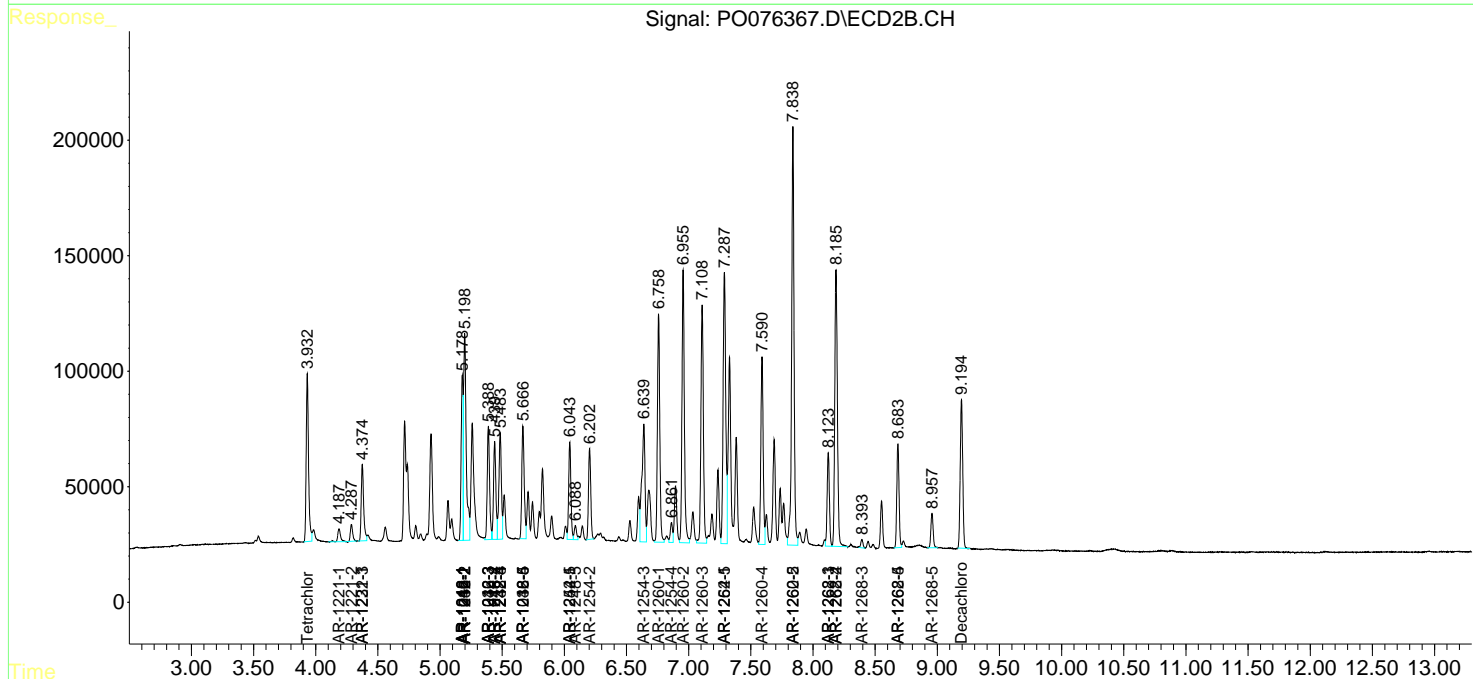
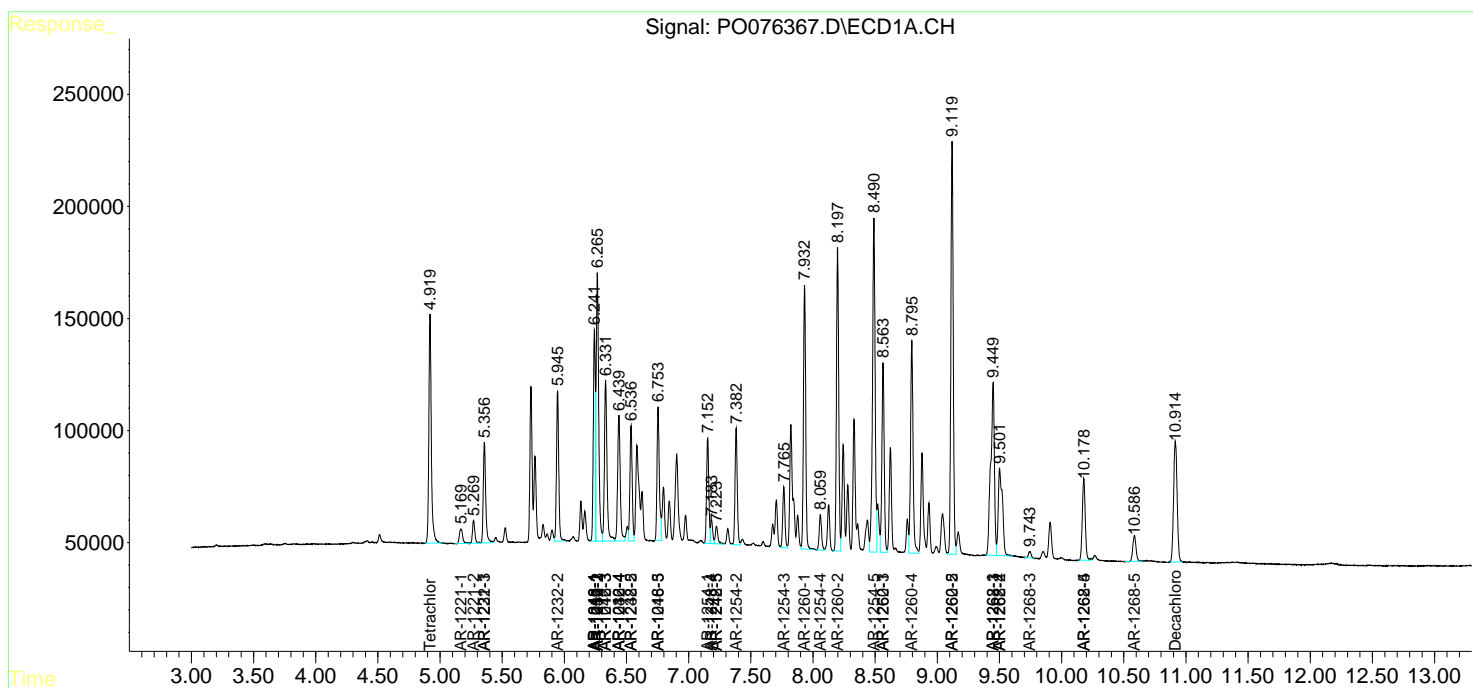
(f)=RT Delta > 1/2 Window (#)=Amounts differ by > 25% (m)=manual int.

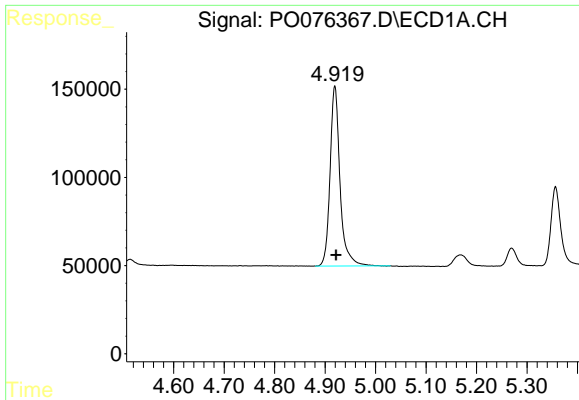
Data Path : Z:\pestpcbsrv\HPCHEM1\ECD\_0\Data\P0031921\  
 Data File : P0076367.D  
 Signal(s) : Signal #1: ECD1A.CH Signal #2: ECD2B.CH  
 Acq On : 19 Mar 2021 14:43  
 Operator : DD\AJ  
 Sample : M1720-04MSD  
 Misc :  
 ALS Vial : 16 Sample Multiplier: 1

Instrument :  
 ECD\_O  
 ClientSampleId :  
 SB-3A-(0.5-1.0)MSD

Integration File signal 1: autoint1.e  
 Integration File signal 2: autoint2.e  
 Quant Time: Mar 19 22:34:54 2021  
 Quant Method : Z:\pestpcbsrv\HPCHEM1\ECD\_0\methods\P0031521.M  
 Quant Title : GC EXTRACTABLES  
 QLast Update : Tue Mar 16 07:18:57 2021  
 Response via : Initial Calibration  
 Integrator: ChemStation 6890 Scale Mode: Small noise peaks clipped

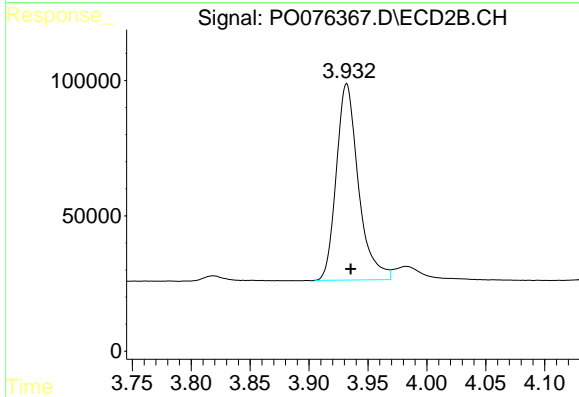
Volume Inj. : 2 µl  
 Signal #1 Phase : ZB-MR1 Signal #2 Phase: ZB-MR2  
 Signal #1 Info : 30Mx0.32mmx 0.50µ Signal #2 Info : 30M x 0.32mm x 0.25µm



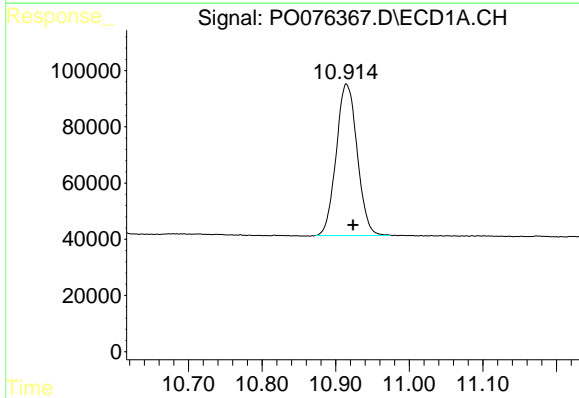


#1 Tetrachloro-m-xylene  
 R.T.: 4.919 min  
 Delta R.T.: -0.003 min  
 Response: 1398856  
 Conc: 24.62 ng/ml

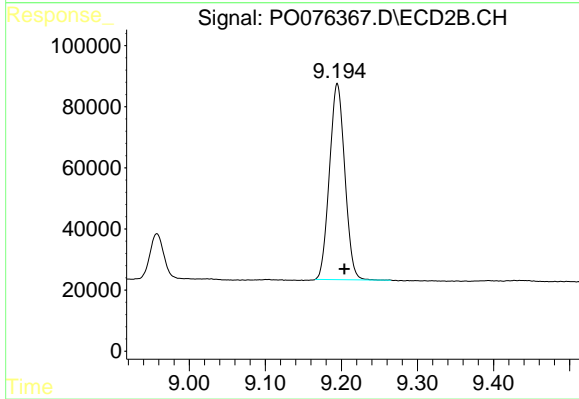
Instrument :  
 ECD\_O  
 ClientSampleId :  
 SB-3A-(0.5-1.0)MSD



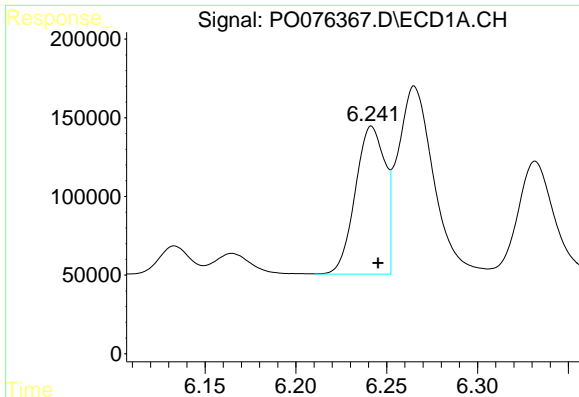
#1 Tetrachloro-m-xylene  
 R.T.: 3.932 min  
 Delta R.T.: -0.003 min  
 Response: 947715  
 Conc: 22.72 ng/ml



#2 Decachlorobiphenyl  
 R.T.: 10.915 min  
 Delta R.T.: -0.009 min  
 Response: 1067893  
 Conc: 27.76 ng/ml



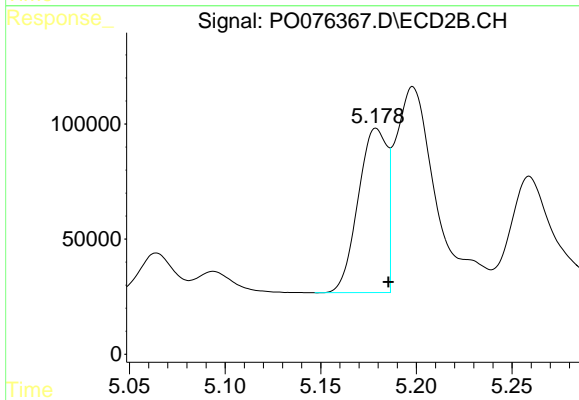
#2 Decachlorobiphenyl  
 R.T.: 9.195 min  
 Delta R.T.: -0.009 min  
 Response: 898513  
 Conc: 23.40 ng/ml



#3 AR-1016-1

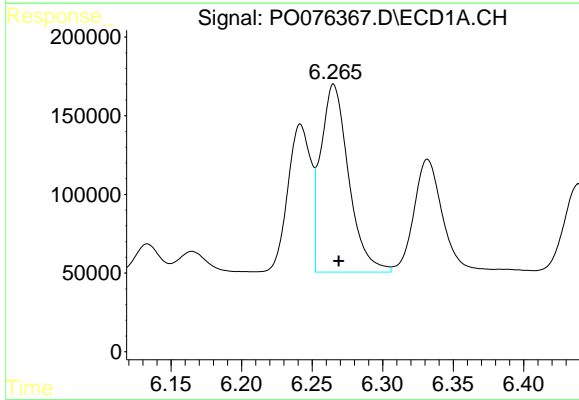
R.T.: 6.242 min  
 Delta R.T.: -0.004 min  
 Response: 1069840  
 Conc: 649.29 ng/ml

Instrument :  
 ECD\_O  
 ClientSampled :  
 SB-3A-(0.5-1.0)MSD



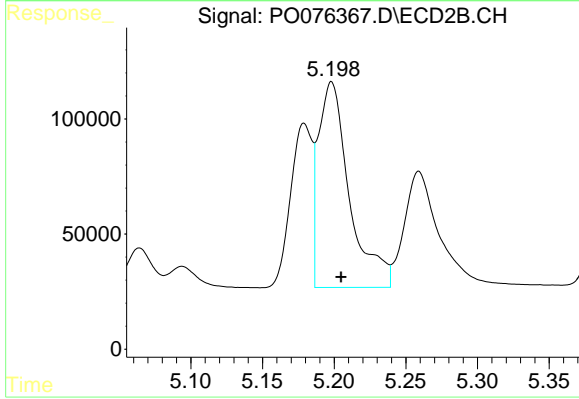
#3 AR-1016-1

R.T.: 5.179 min  
 Delta R.T.: -0.006 min  
 Response: 746488  
 Conc: 637.83 ng/ml



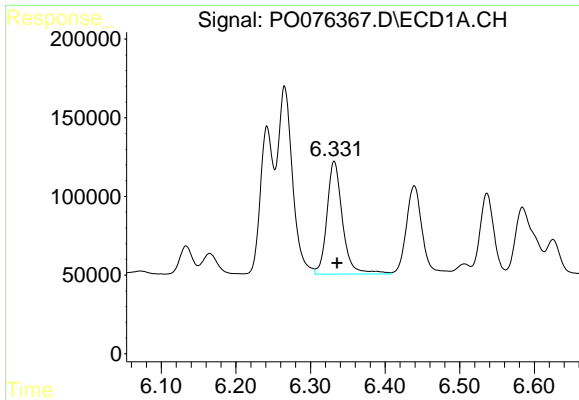
#4 AR-1016-2

R.T.: 6.265 min  
 Delta R.T.: -0.004 min  
 Response: 1641461  
 Conc: 642.40 ng/ml



#4 AR-1016-2

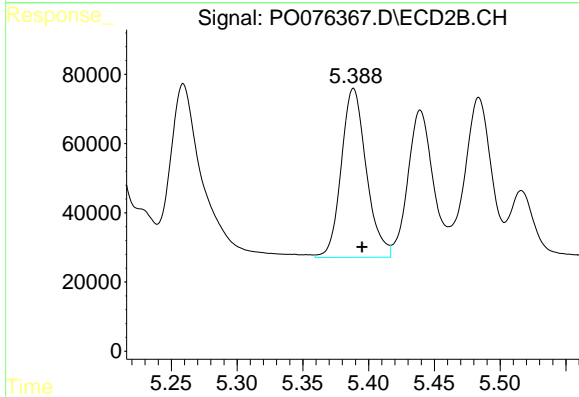
R.T.: 5.198 min  
 Delta R.T.: -0.007 min  
 Response: 1345071  
 Conc: 610.57 ng/ml



#5 AR-1016-3

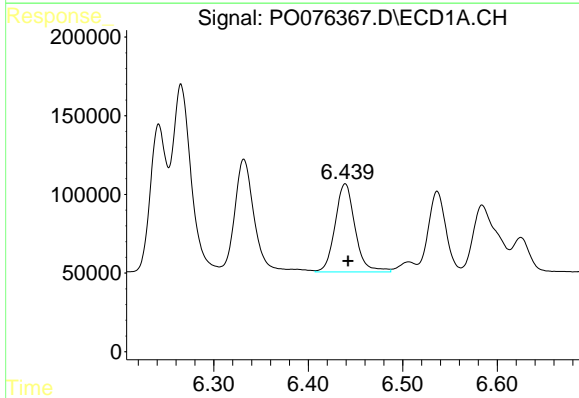
R.T.: 6.332 min  
 Delta R.T.: -0.004 min  
 Response: 1038730  
 Conc: 659.62 ng/ml

Instrument :  
 ECD\_O  
 ClientSampleId :  
 SB-3A-(0.5-1.0)MSD



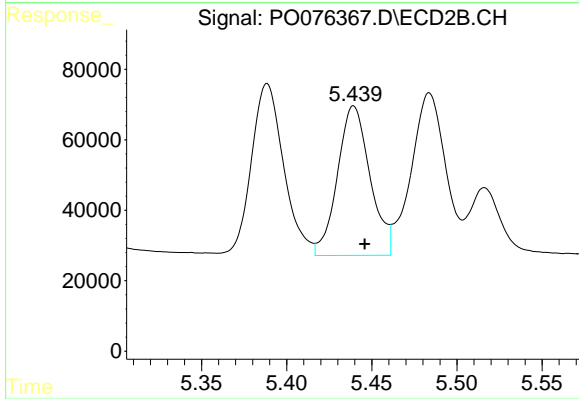
#5 AR-1016-3

R.T.: 5.389 min  
 Delta R.T.: -0.007 min  
 Response: 647631  
 Conc: 629.86 ng/ml



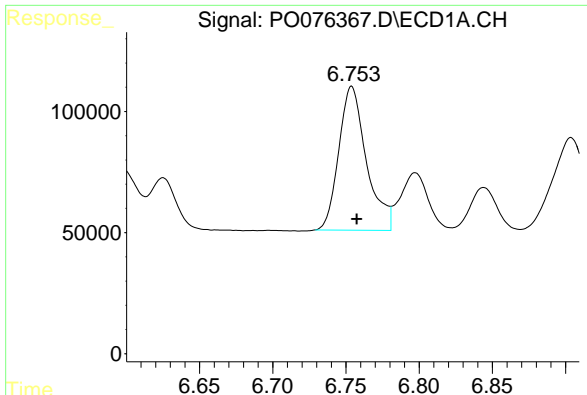
#6 AR-1016-4

R.T.: 6.439 min  
 Delta R.T.: -0.003 min  
 Response: 825280  
 Conc: 667.19 ng/ml



#6 AR-1016-4

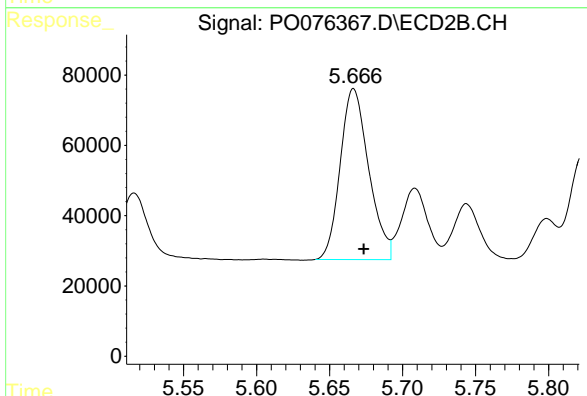
R.T.: 5.439 min  
 Delta R.T.: -0.007 min  
 Response: 566114  
 Conc: 577.16 ng/ml



#7 AR-1016-5

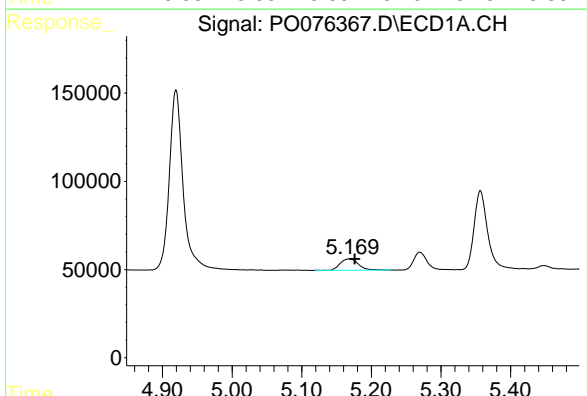
R.T.: 6.754 min  
 Delta R.T.: -0.003 min  
 Response: 779752  
 Conc: 607.47 ng/ml

Instrument :  
 ECD\_O  
 ClientSampleId :  
 SB-3A-(0.5-1.0)MSD



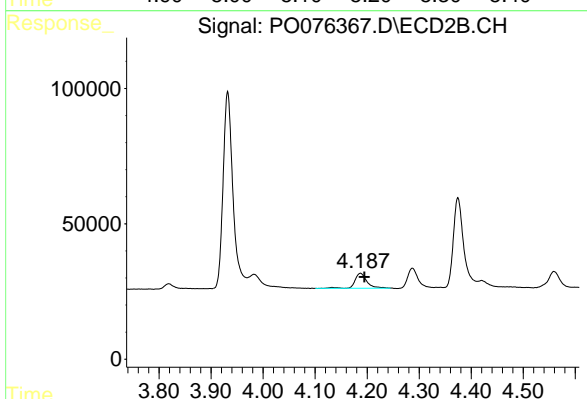
#7 AR-1016-5

R.T.: 5.666 min  
 Delta R.T.: -0.007 min  
 Response: 660506  
 Conc: 580.36 ng/ml



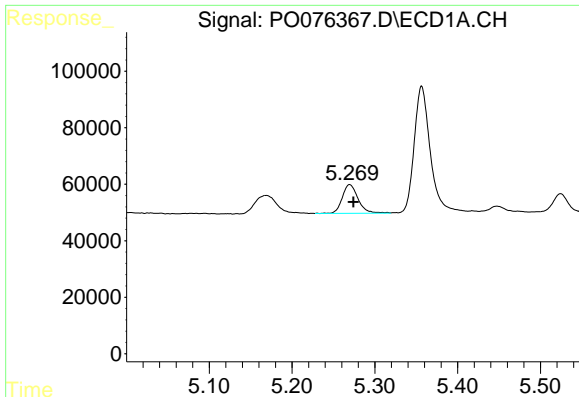
#8 AR-1221-1

R.T.: 5.169 min  
 Delta R.T.: -0.007 min  
 Response: 117035  
 Conc: 221.65 ng/ml



#8 AR-1221-1

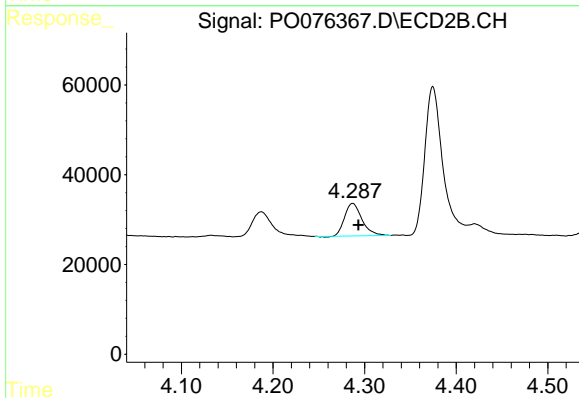
R.T.: 4.187 min  
 Delta R.T.: -0.008 min  
 Response: 87176  
 Conc: 197.71 ng/ml



#9 AR-1221-2

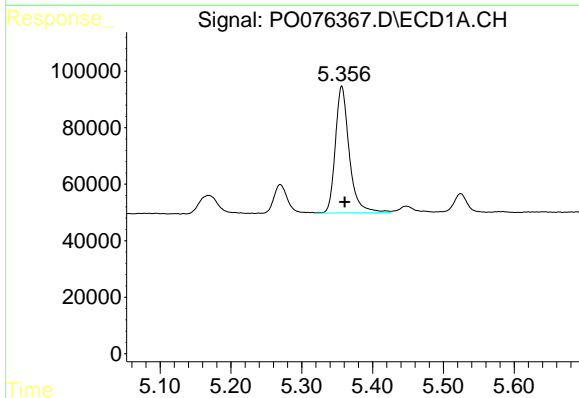
R.T.: 5.270 min  
 Delta R.T.: -0.005 min  
 Response: 134659  
 Conc: 328.76 ng/ml

Instrument :  
 ECD\_O  
 ClientSampleId :  
 SB-3A-(0.5-1.0)MSD



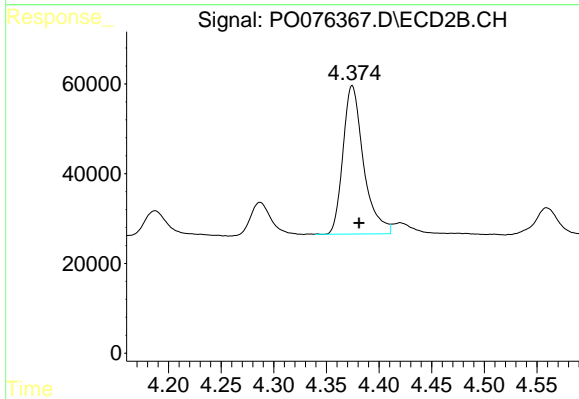
#9 AR-1221-2

R.T.: 4.287 min  
 Delta R.T.: -0.006 min  
 Response: 95592  
 Conc: 292.71 ng/ml



#10 AR-1221-3

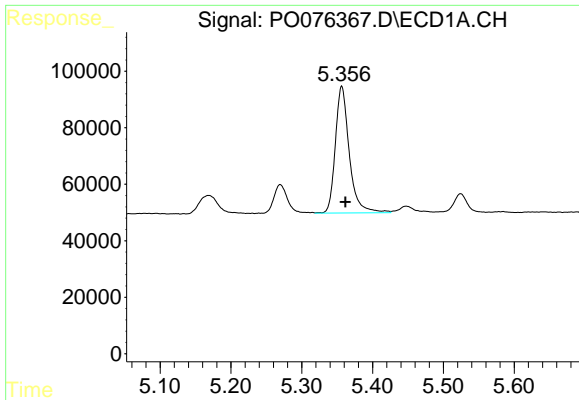
R.T.: 5.357 min  
 Delta R.T.: -0.004 min  
 Response: 613937  
 Conc: 457.37 ng/ml



#10 AR-1221-3

R.T.: 4.375 min  
 Delta R.T.: -0.006 min  
 Response: 449899  
 Conc: 426.75 ng/ml

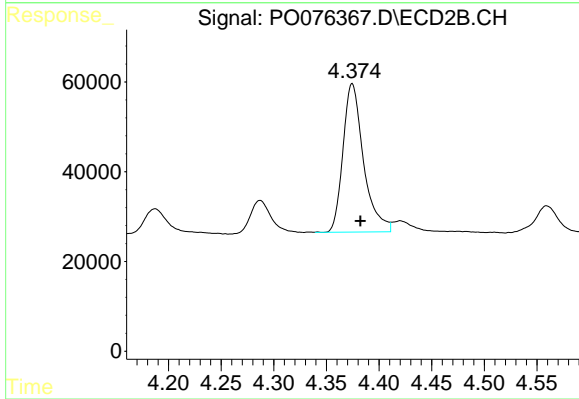




#11 AR-1232-1

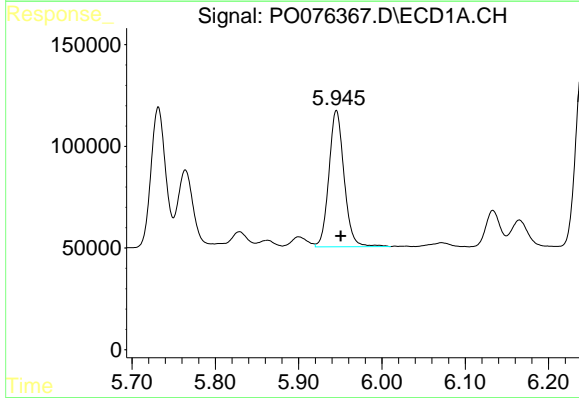
R.T.: 5.357 min  
 Delta R.T.: -0.005 min  
 Response: 613937  
 Conc: 569.08 ng/ml

Instrument :  
 ECD\_O  
 ClientSampleId :  
 SB-3A-(0.5-1.0)MSD



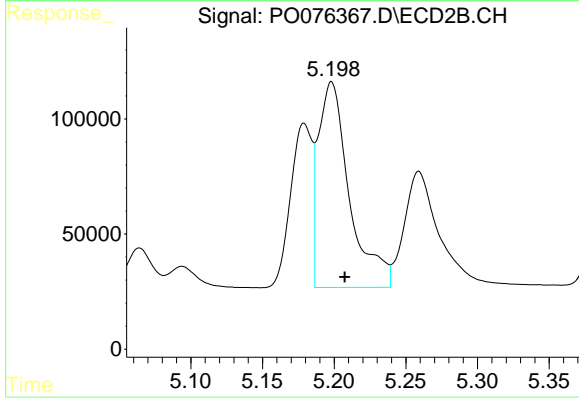
#11 AR-1232-1

R.T.: 4.375 min  
 Delta R.T.: -0.008 min  
 Response: 449899  
 Conc: 526.39 ng/ml



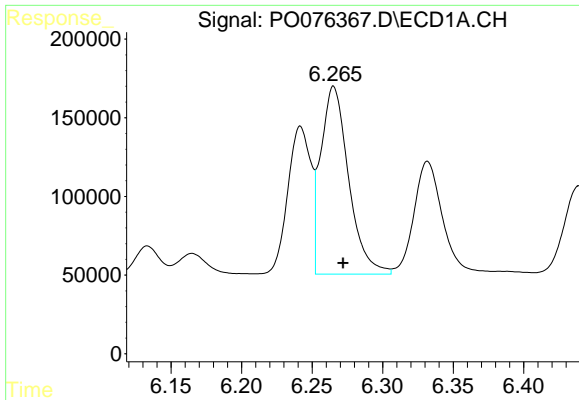
#12 AR-1232-2

R.T.: 5.945 min  
 Delta R.T.: -0.005 min  
 Response: 849381  
 Conc: 1442.56 ng/ml



#12 AR-1232-2

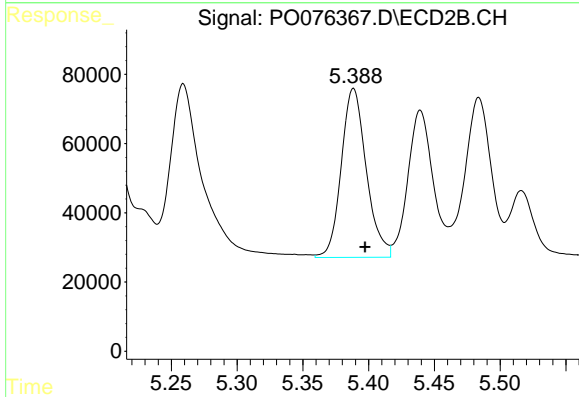
R.T.: 5.198 min  
 Delta R.T.: -0.009 min  
 Response: 1345071  
 Conc: 1425.12 ng/ml



#13 AR-1232-3

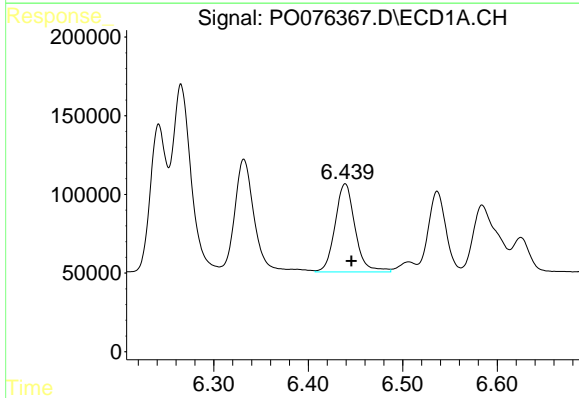
R.T.: 6.265 min  
 Delta R.T.: -0.007 min  
 Response: 1641461  
 Conc: 1575.66 ng/ml

**Instrument :**  
 ECD\_O  
**ClientSampleId :**  
 SB-3A-(0.5-1.0)MSD



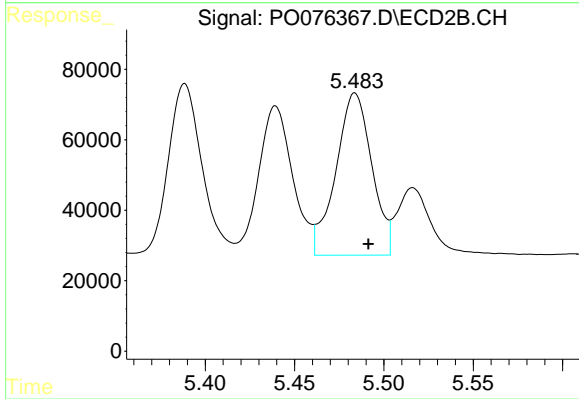
#13 AR-1232-3

R.T.: 5.389 min  
 Delta R.T.: -0.009 min  
 Response: 647631  
 Conc: 1559.28 ng/ml



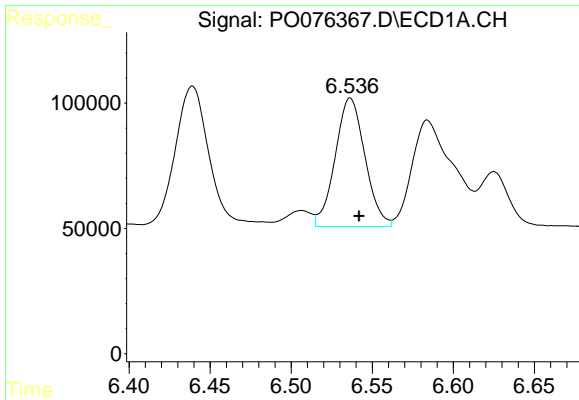
#14 AR-1232-4

R.T.: 6.439 min  
 Delta R.T.: -0.006 min  
 Response: 825280  
 Conc: 1690.18 ng/ml



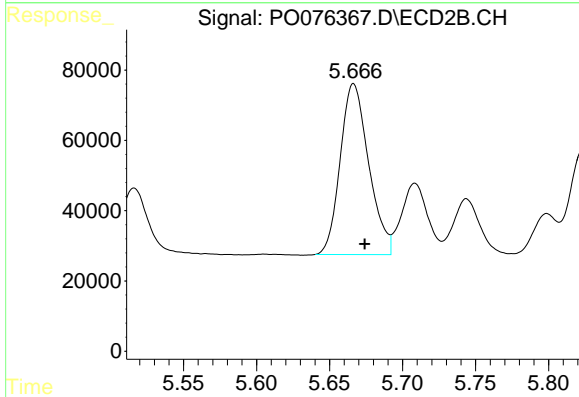
#14 AR-1232-4

R.T.: 5.484 min  
 Delta R.T.: -0.007 min  
 Response: 644836  
 Conc: 1540.09 ng/ml

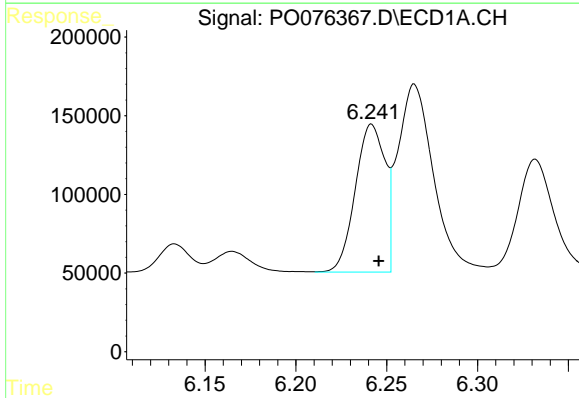


#15 AR-1232-5  
 R.T.: 6.536 min  
 Delta R.T.: -0.005 min  
 Response: 656937  
 Conc: 1763.79 ng/ml

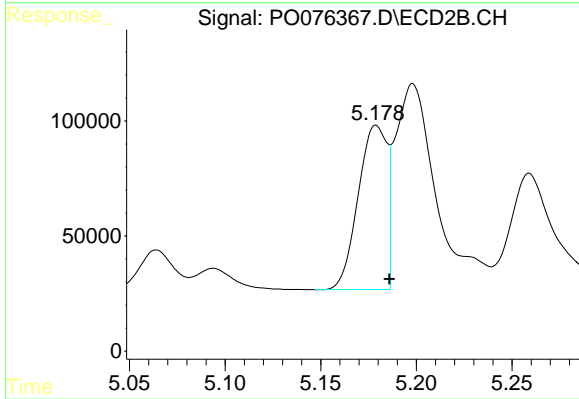
**Instrument :**  
 ECD\_O  
**ClientSampleId :**  
 SB-3A-(0.5-1.0)MSD



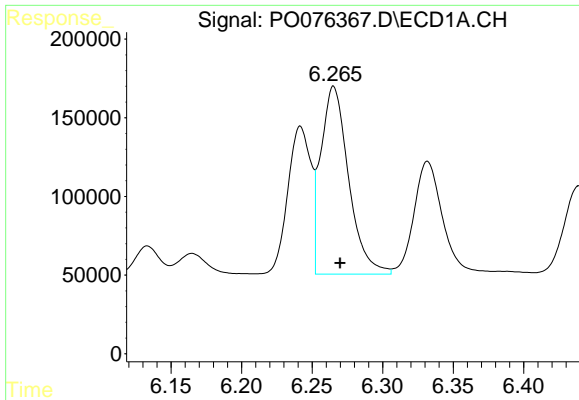
#15 AR-1232-5  
 R.T.: 5.666 min  
 Delta R.T.: -0.008 min  
 Response: 660506  
 Conc: 1500.22 ng/ml



#16 AR-1242-1  
 R.T.: 6.242 min  
 Delta R.T.: -0.004 min  
 Response: 1069840  
 Conc: 847.15 ng/ml



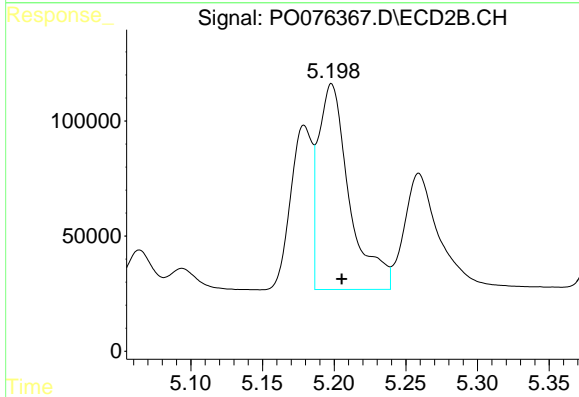
#16 AR-1242-1  
 R.T.: 5.179 min  
 Delta R.T.: -0.007 min  
 Response: 746488  
 Conc: 841.39 ng/ml



#17 AR-1242-2

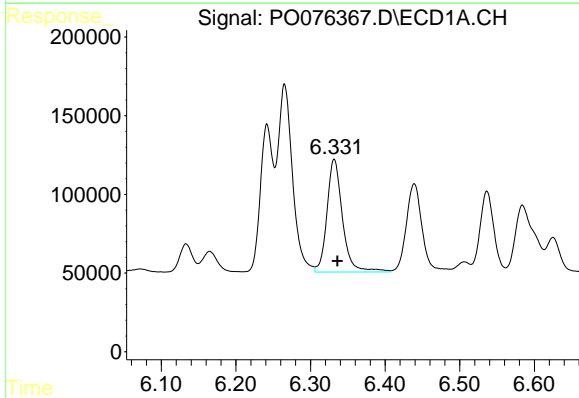
R.T.: 6.265 min  
 Delta R.T.: -0.005 min  
 Response: 1641461  
 Conc: 828.22 ng/ml

Instrument :  
 ECD\_O  
 ClientSampleId :  
 SB-3A-(0.5-1.0)MSD



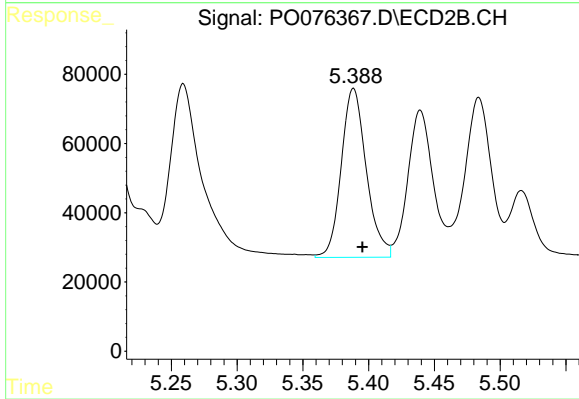
#17 AR-1242-2

R.T.: 5.198 min  
 Delta R.T.: -0.007 min  
 Response: 1345071  
 Conc: 777.12 ng/ml



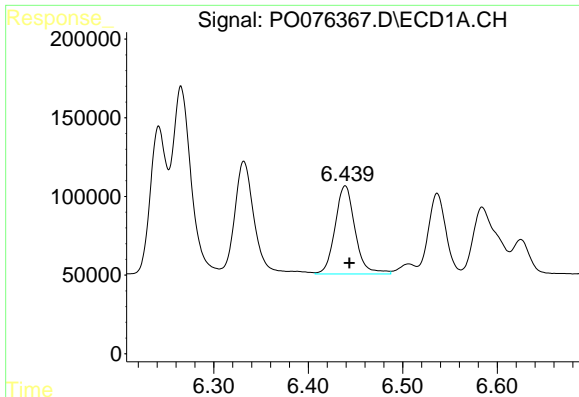
#18 AR-1242-3

R.T.: 6.332 min  
 Delta R.T.: -0.004 min  
 Response: 1038730  
 Conc: 819.73 ng/ml



#18 AR-1242-3

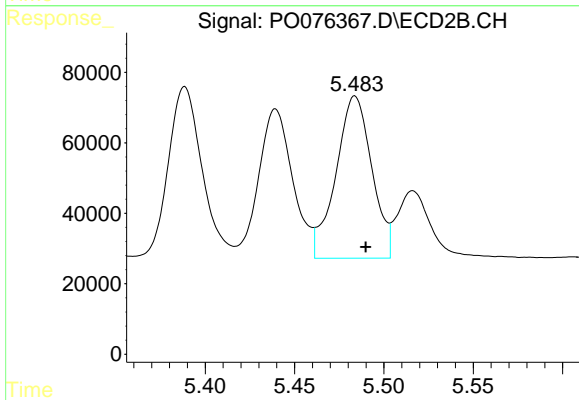
R.T.: 5.389 min  
 Delta R.T.: -0.007 min  
 Response: 647631  
 Conc: 804.02 ng/ml



#19 AR-1242-4

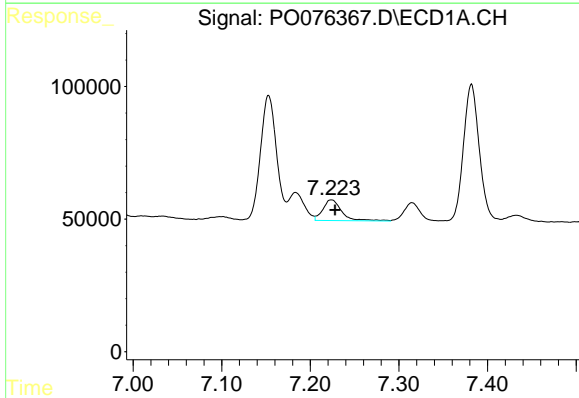
R.T.: 6.439 min  
 Delta R.T.: -0.004 min  
 Response: 825280  
 Conc: 852.30 ng/ml

Instrument :  
 ECD\_O  
 ClientSampleId :  
 SB-3A-(0.5-1.0)MSD



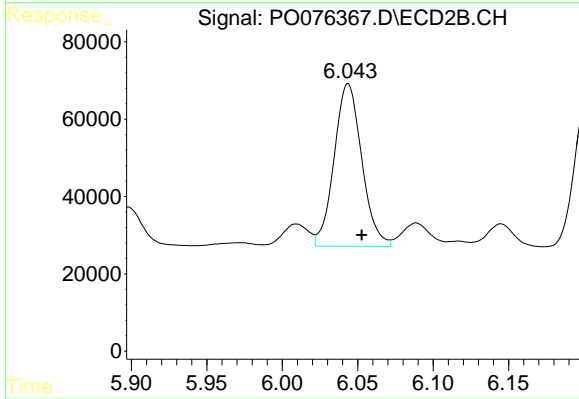
#19 AR-1242-4

R.T.: 5.484 min  
 Delta R.T.: -0.006 min  
 Response: 644836  
 Conc: 742.87 ng/ml



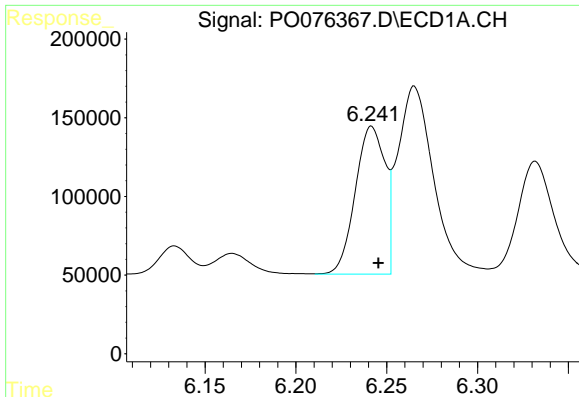
#20 AR-1242-5

R.T.: 7.224 min  
 Delta R.T.: -0.004 min  
 Response: 115256  
 Conc: 114.72 ng/ml



#20 AR-1242-5

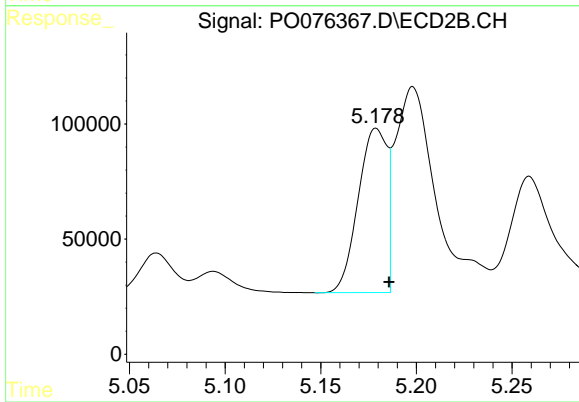
R.T.: 6.044 min  
 Delta R.T.: -0.009 min  
 Response: 535978  
 Conc: 531.83 ng/ml



#21 AR-1248-1

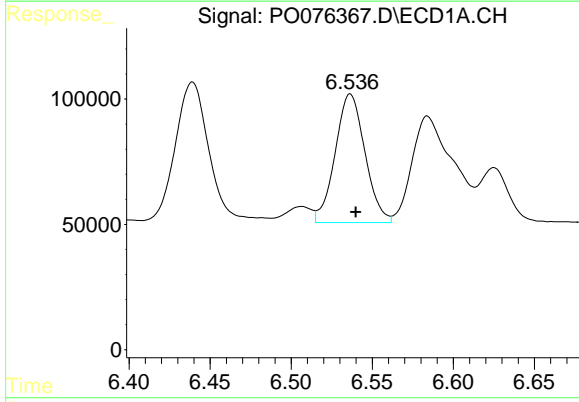
R.T.: 6.242 min  
 Delta R.T.: -0.004 min  
 Response: 1069840  
 Conc: 1134.78 ng/ml

Instrument :  
 ECD\_O  
 ClientSampleId :  
 SB-3A-(0.5-1.0)MSD



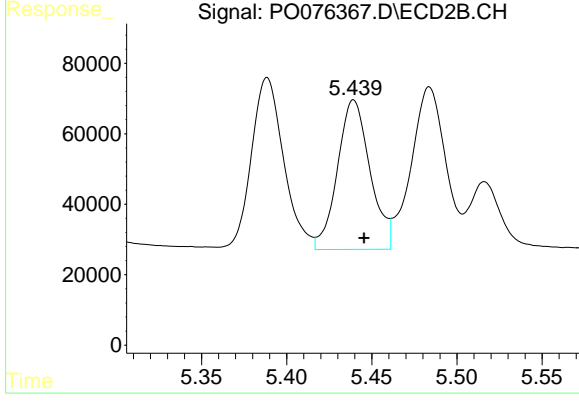
#21 AR-1248-1

R.T.: 5.179 min  
 Delta R.T.: -0.007 min  
 Response: 746488  
 Conc: 1086.93 ng/ml



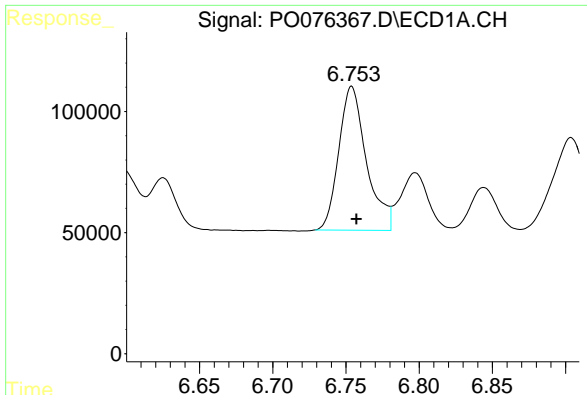
#22 AR-1248-2

R.T.: 6.536 min  
 Delta R.T.: -0.003 min  
 Response: 656937  
 Conc: 436.10 ng/ml



#22 AR-1248-2

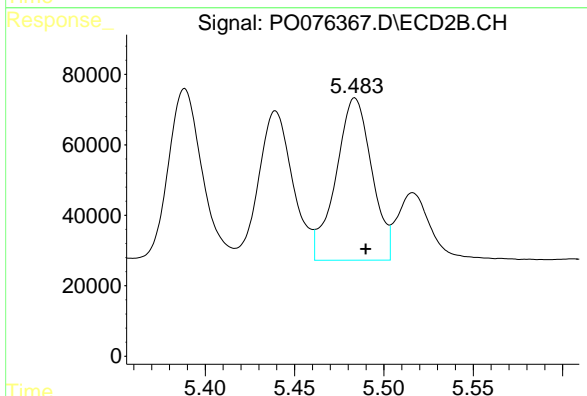
R.T.: 5.439 min  
 Delta R.T.: -0.006 min  
 Response: 566114  
 Conc: 437.54 ng/ml



#23 AR-1248-3

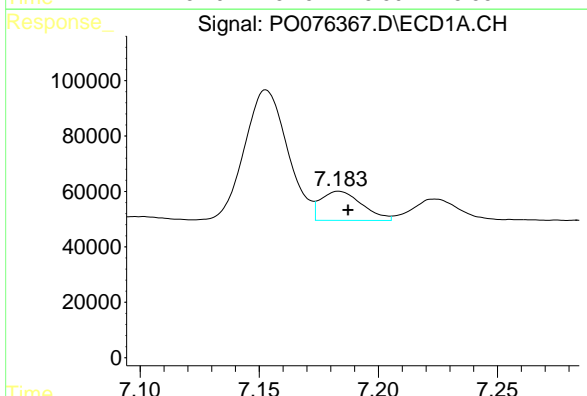
R.T.: 6.754 min  
 Delta R.T.: -0.003 min  
 Response: 779752  
 Conc: 449.58 ng/ml

Instrument :  
 ECD\_O  
 ClientSampleId :  
 SB-3A-(0.5-1.0)MSD



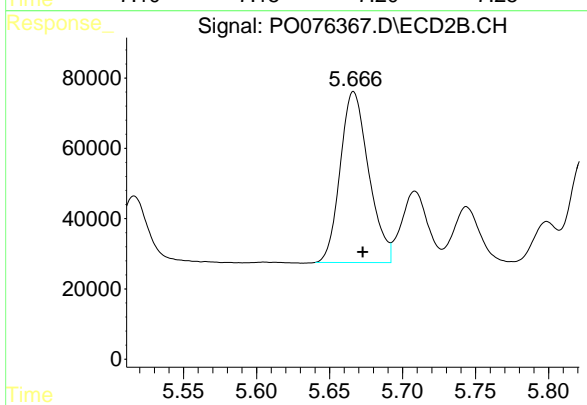
#23 AR-1248-3

R.T.: 5.484 min  
 Delta R.T.: -0.006 min  
 Response: 644836  
 Conc: 504.49 ng/ml



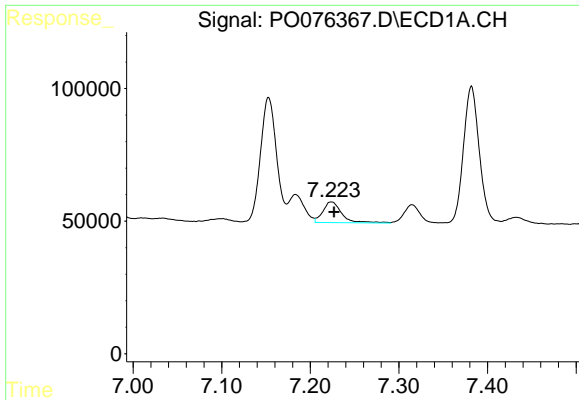
#24 AR-1248-4

R.T.: 7.183 min  
 Delta R.T.: -0.004 min  
 Response: 125953  
 Conc: 71.59 ng/ml



#24 AR-1248-4

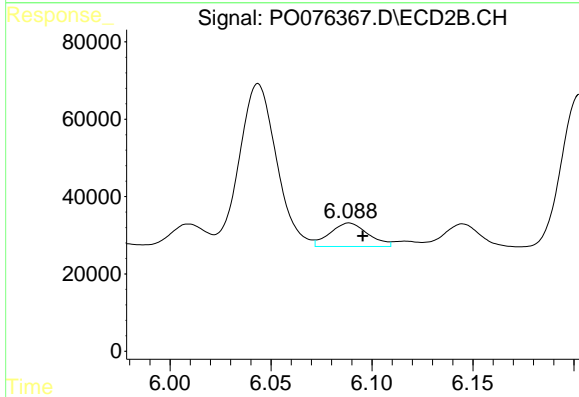
R.T.: 5.666 min  
 Delta R.T.: -0.006 min  
 Response: 660506  
 Conc: 449.18 ng/ml



#25 AR-1248-5

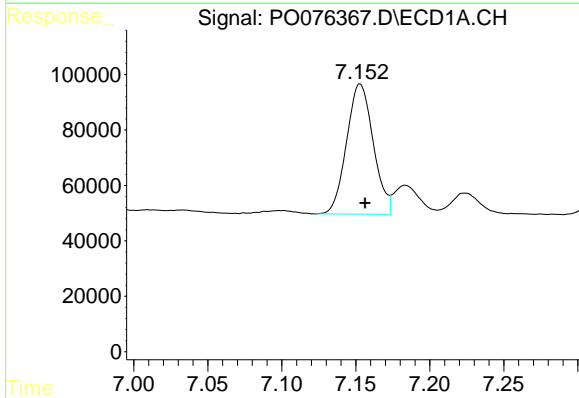
R.T.: 7.224 min  
 Delta R.T.: -0.003 min  
 Response: 115256  
 Conc: 65.17 ng/ml

**Instrument :**  
 ECD\_O  
**ClientSampled :**  
 SB-3A-(0.5-1.0)MSD



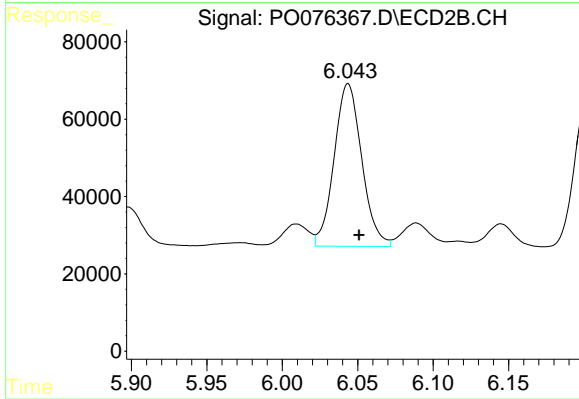
#25 AR-1248-5

R.T.: 6.089 min  
 Delta R.T.: -0.007 min  
 Response: 79635  
 Conc: 51.49 ng/ml



#26 AR-1254-1

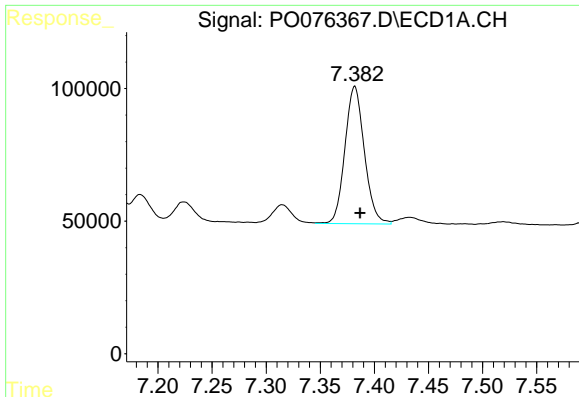
R.T.: 7.153 min  
 Delta R.T.: -0.003 min  
 Response: 588994  
 Conc: 287.40 ng/ml



#26 AR-1254-1

R.T.: 6.044 min  
 Delta R.T.: -0.007 min  
 Response: 535978  
 Conc: 234.51 ng/ml

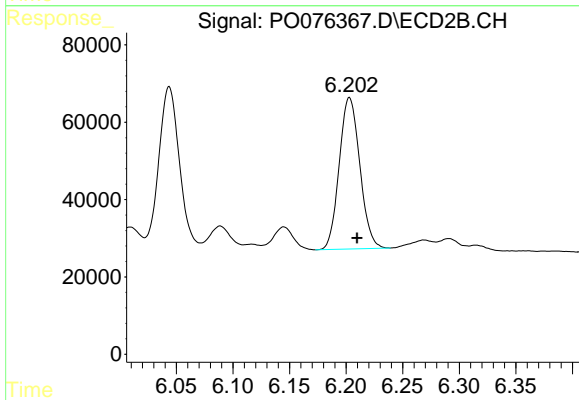




#27 AR-1254-2

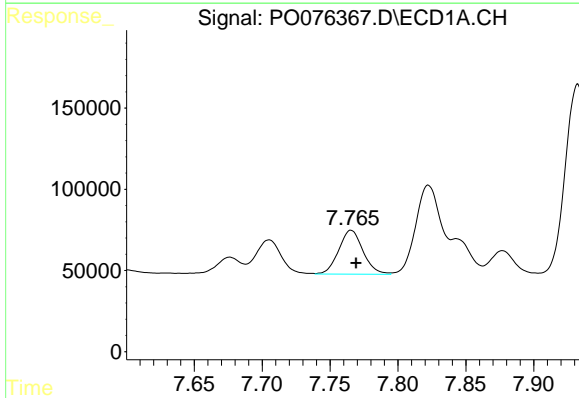
R.T.: 7.382 min  
 Delta R.T.: -0.005 min  
 Response: 647544  
 Conc: 208.38 ng/ml

Instrument :  
 ECD\_O  
 ClientSampleId :  
 SB-3A-(0.5-1.0)MSD



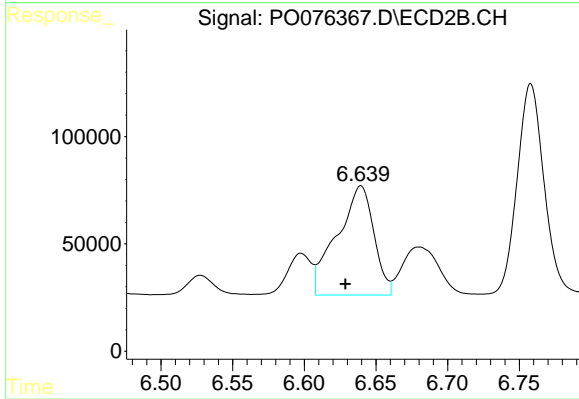
#27 AR-1254-2

R.T.: 6.203 min  
 Delta R.T.: -0.007 min  
 Response: 496154  
 Conc: 250.51 ng/ml



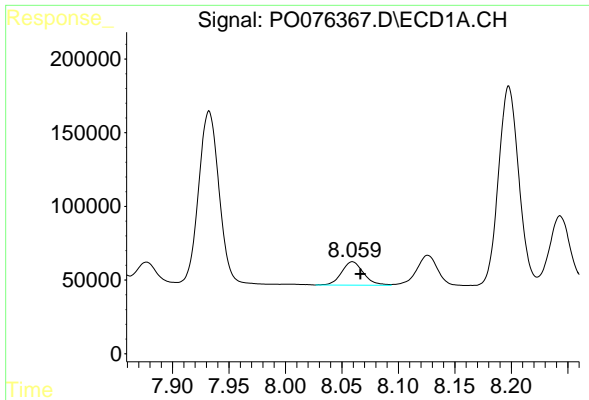
#28 AR-1254-3

R.T.: 7.766 min  
 Delta R.T.: -0.004 min  
 Response: 337371  
 Conc: 106.04 ng/ml



#28 AR-1254-3

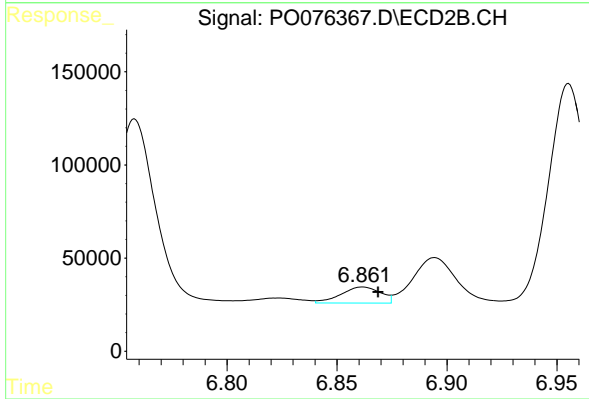
R.T.: 6.640 min  
 Delta R.T.: 0.011 min  
 Response: 910645  
 Conc: 302.34 ng/ml



#29 AR-1254-4

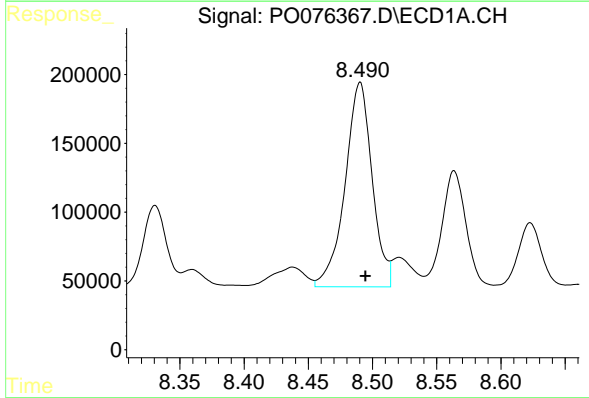
R.T.: 8.059 min  
 Delta R.T.: -0.007 min  
 Response: 213708  
 Conc: 102.00 ng/ml

**Instrument :**  
 ECD\_O  
**ClientSampleId :**  
 SB-3A-(0.5-1.0)MSD



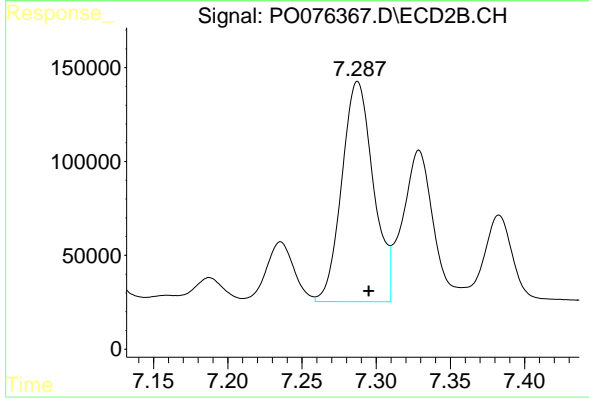
#29 AR-1254-4

R.T.: 6.862 min  
 Delta R.T.: -0.007 min  
 Response: 107703  
 Conc: 61.03 ng/ml



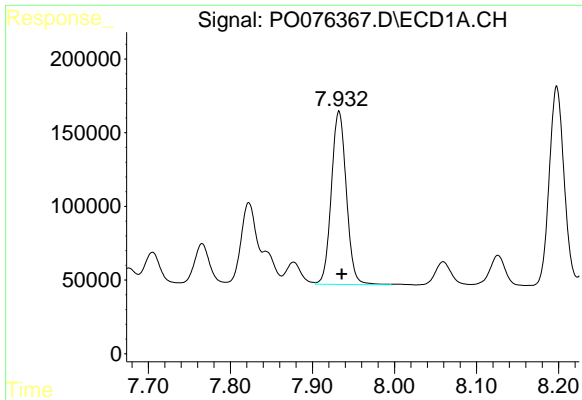
#30 AR-1254-5

R.T.: 8.490 min  
 Delta R.T.: -0.004 min  
 Response: 2178951  
 Conc: 948.74 ng/ml



#30 AR-1254-5

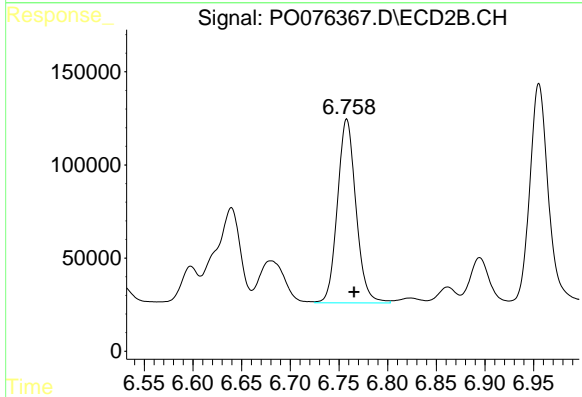
R.T.: 7.287 min  
 Delta R.T.: -0.007 min  
 Response: 1736377  
 Conc: 663.23 ng/ml



#31 AR-1260-1

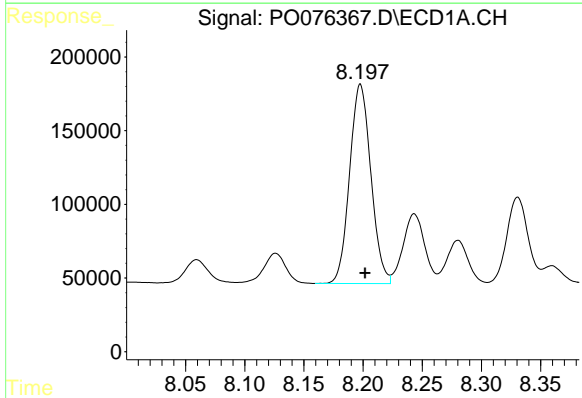
R.T.: 7.932 min  
 Delta R.T.: -0.004 min  
 Response: 1491546  
 Conc: 641.52 ng/ml

**Instrument :**  
 ECD\_O  
**ClientSampleId :**  
 SB-3A-(0.5-1.0)MSD



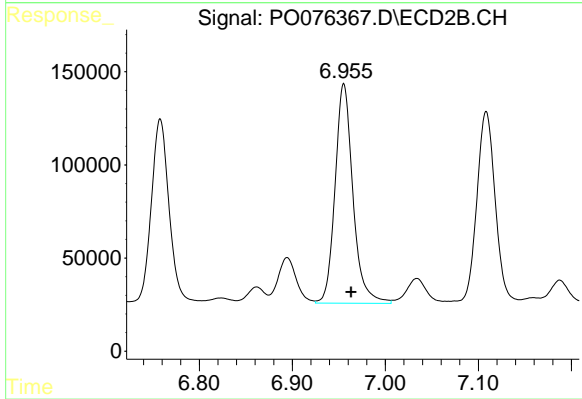
#31 AR-1260-1

R.T.: 6.758 min  
 Delta R.T.: -0.007 min  
 Response: 1305764  
 Conc: 635.63 ng/ml



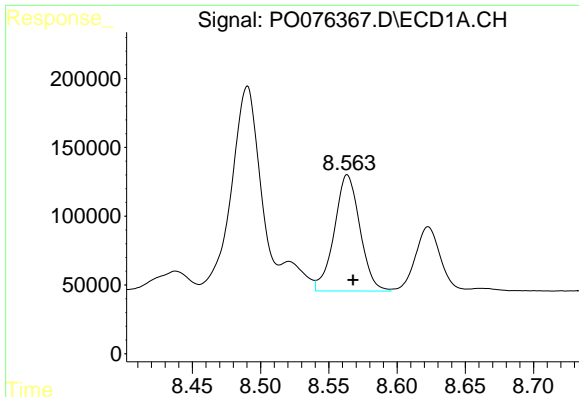
#32 AR-1260-2

R.T.: 8.198 min  
 Delta R.T.: -0.004 min  
 Response: 1693365  
 Conc: 663.20 ng/ml



#32 AR-1260-2

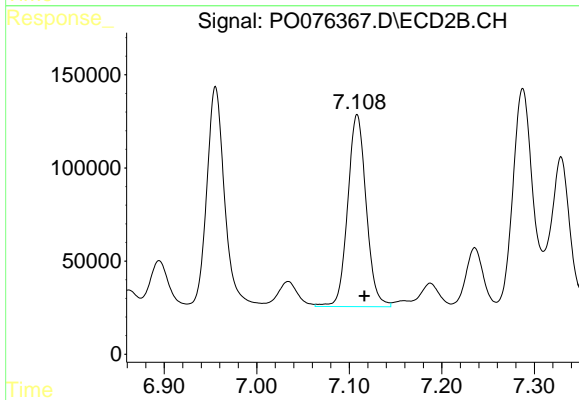
R.T.: 6.955 min  
 Delta R.T.: -0.008 min  
 Response: 1573852  
 Conc: 648.95 ng/ml



#33 AR-1260-3

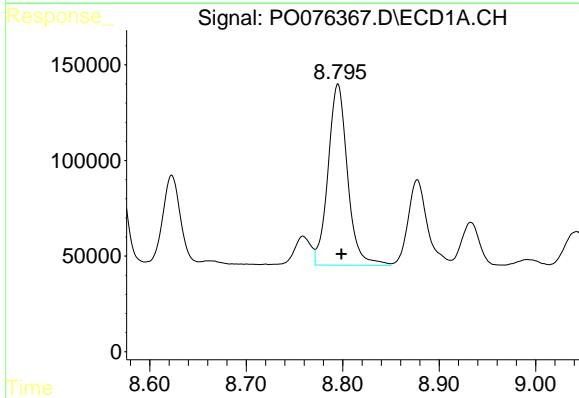
R.T.: 8.564 min  
Delta R.T.: -0.004 min  
Response: 1102747  
Conc: 556.25 ng/ml

Instrument :  
ECD\_O  
ClientSampleId :  
SB-3A-(0.5-1.0)MSD



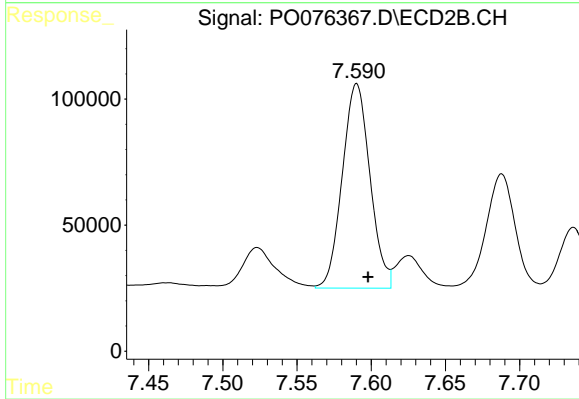
#33 AR-1260-3

R.T.: 7.109 min  
Delta R.T.: -0.008 min  
Response: 1432028  
Conc: 633.18 ng/ml



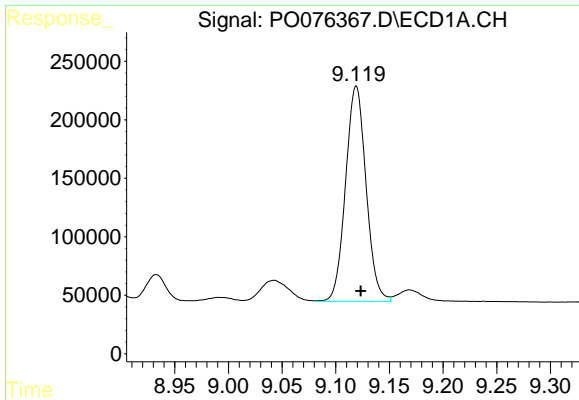
#34 AR-1260-4

R.T.: 8.795 min  
Delta R.T.: -0.004 min  
Response: 1325010  
Conc: 586.51 ng/ml



#34 AR-1260-4

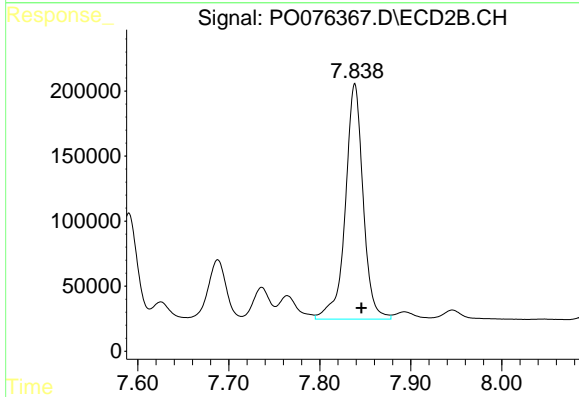
R.T.: 7.590 min  
Delta R.T.: -0.008 min  
Response: 1054736  
Conc: 547.35 ng/ml



#35 AR-1260-5

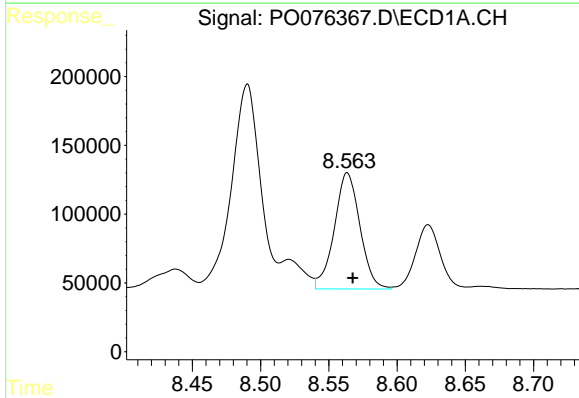
R.T.: 9.119 min  
 Delta R.T.: -0.004 min  
 Response: 2447846  
 Conc: 598.85 ng/ml

Instrument :  
 ECD\_O  
 ClientSampleId :  
 SB-3A-(0.5-1.0)MSD



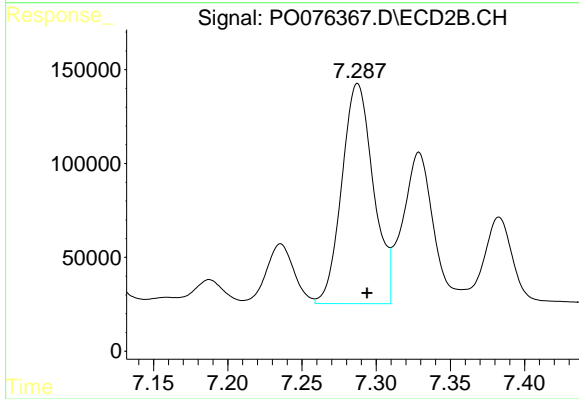
#35 AR-1260-5

R.T.: 7.839 min  
 Delta R.T.: -0.007 min  
 Response: 2461017  
 Conc: 556.66 ng/ml



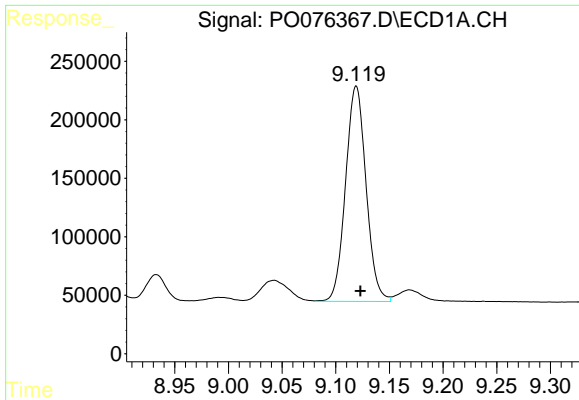
#36 AR-1262-1

R.T.: 8.564 min  
 Delta R.T.: -0.004 min  
 Response: 1102747  
 Conc: 372.72 ng/ml



#36 AR-1262-1

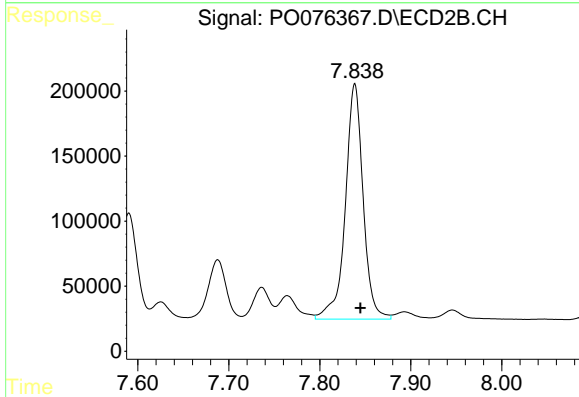
R.T.: 7.287 min  
 Delta R.T.: -0.006 min  
 Response: 1736377  
 Conc: 1188.98 ng/ml



#37 AR-1262-2

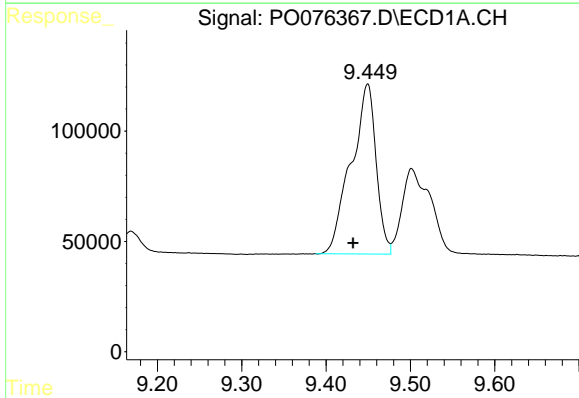
R.T.: 9.119 min  
 Delta R.T.: -0.004 min  
 Response: 2447846  
 Conc: 505.65 ng/ml

Instrument :  
 ECD\_O  
 ClientSampleId :  
 SB-3A-(0.5-1.0)MSD



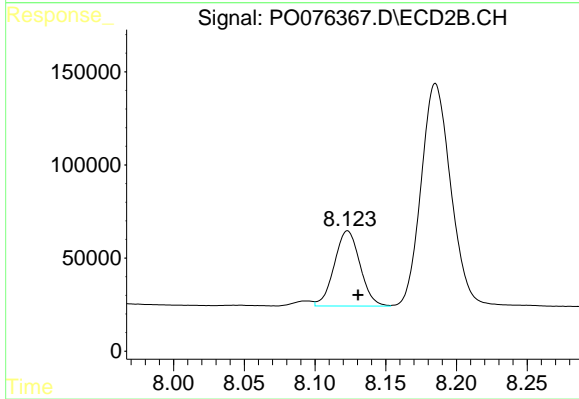
#37 AR-1262-2

R.T.: 7.839 min  
 Delta R.T.: -0.006 min  
 Response: 2461017  
 Conc: 496.81 ng/ml



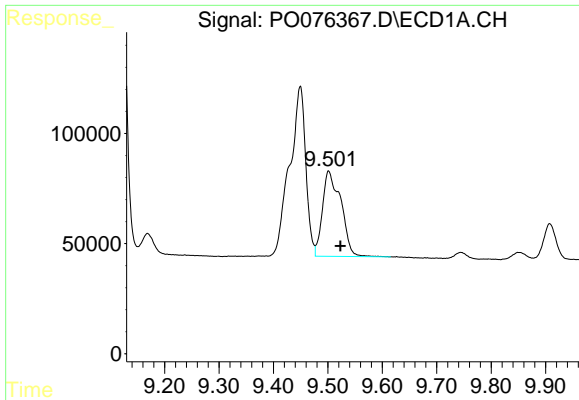
#38 AR-1262-3

R.T.: 9.449 min  
 Delta R.T.: 0.017 min  
 Response: 1586471  
 Conc: 480.04 ng/ml



#38 AR-1262-3

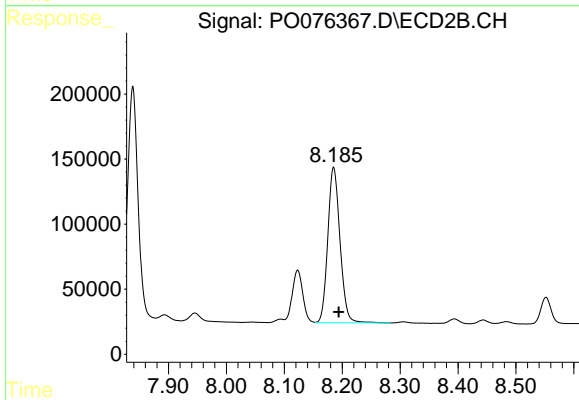
R.T.: 8.123 min  
 Delta R.T.: -0.007 min  
 Response: 510641  
 Conc: 237.69 ng/ml



#39 AR-1262-4

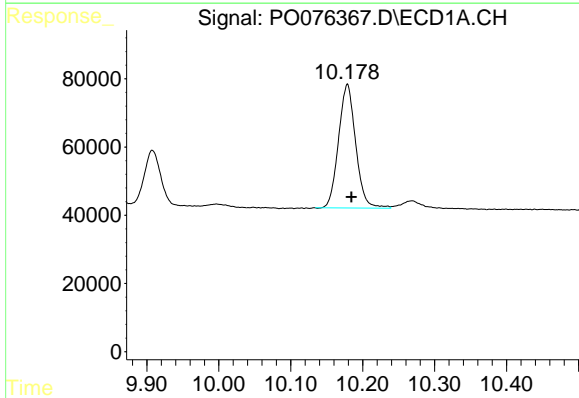
R.T.: 9.501 min  
Delta R.T.: -0.022 min  
Response: 912953  
Conc: 355.15 ng/ml

Instrument :  
ECD\_O  
ClientSampleId :  
SB-3A-(0.5-1.0)MSD



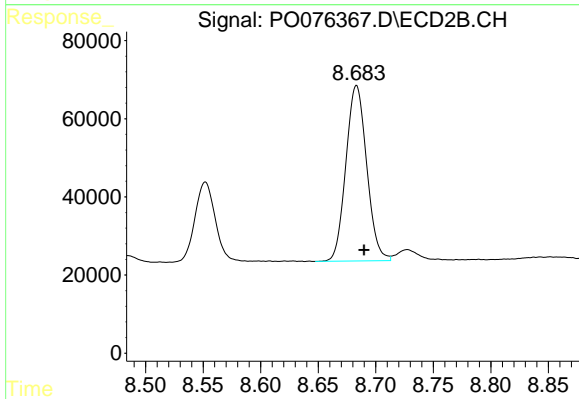
#39 AR-1262-4

R.T.: 8.185 min  
Delta R.T.: -0.009 min  
Response: 1757850  
Conc: 464.76 ng/ml



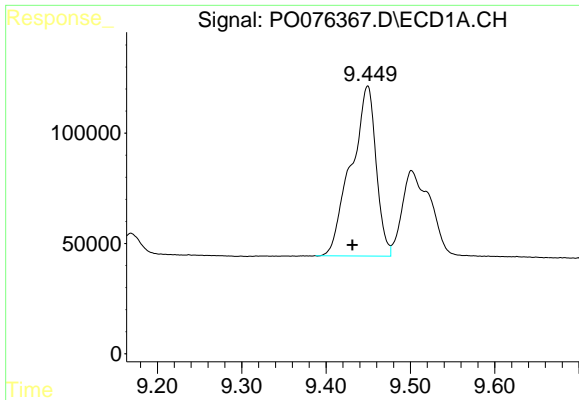
#40 AR-1262-5

R.T.: 10.179 min  
Delta R.T.: -0.006 min  
Response: 600075  
Conc: 364.80 ng/ml



#40 AR-1262-5

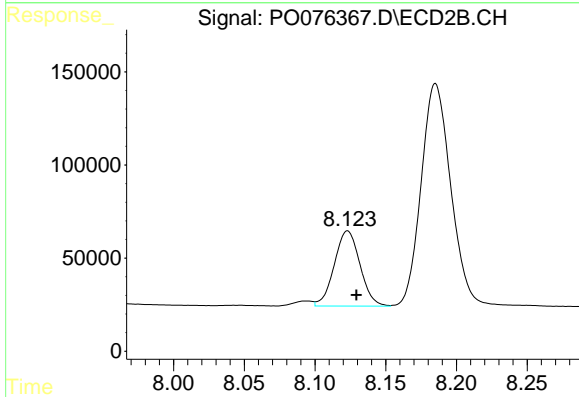
R.T.: 8.683 min  
Delta R.T.: -0.007 min  
Response: 567925  
Conc: 328.07 ng/ml



#41 AR-1268-1

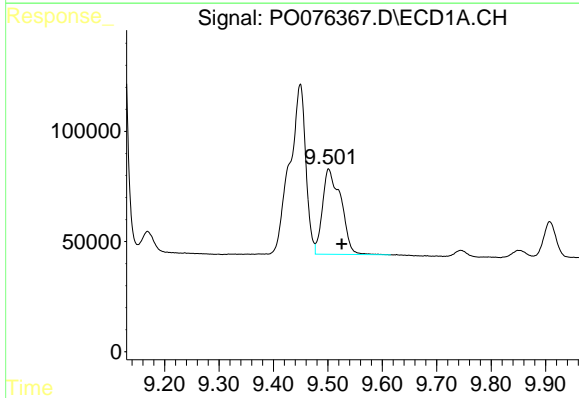
R.T.: 9.449 min  
 Delta R.T.: 0.018 min  
 Response: 1586471  
 Conc: 272.35 ng/ml

**Instrument :**  
 ECD\_O  
**ClientSampleId :**  
 SB-3A-(0.5-1.0)MSD



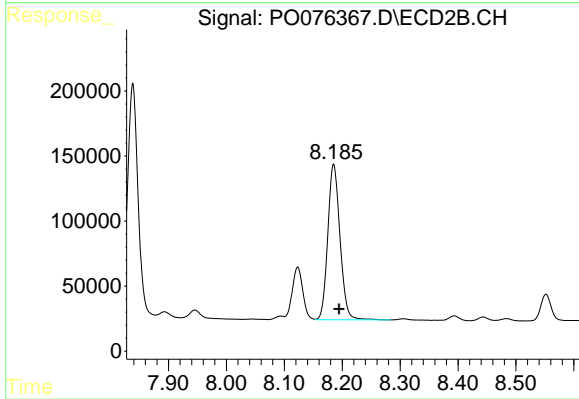
#41 AR-1268-1

R.T.: 8.123 min  
 Delta R.T.: -0.006 min  
 Response: 510641  
 Conc: 86.95 ng/ml



#42 AR-1268-2

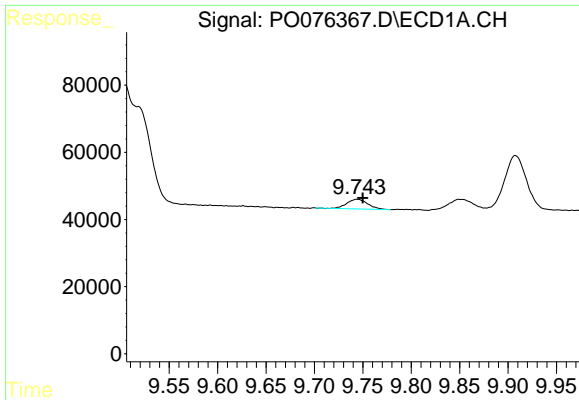
R.T.: 9.501 min  
 Delta R.T.: -0.024 min  
 Response: 912953  
 Conc: 172.10 ng/ml



#42 AR-1268-2

R.T.: 8.185 min  
 Delta R.T.: -0.009 min  
 Response: 1757850  
 Conc: 330.03 ng/ml

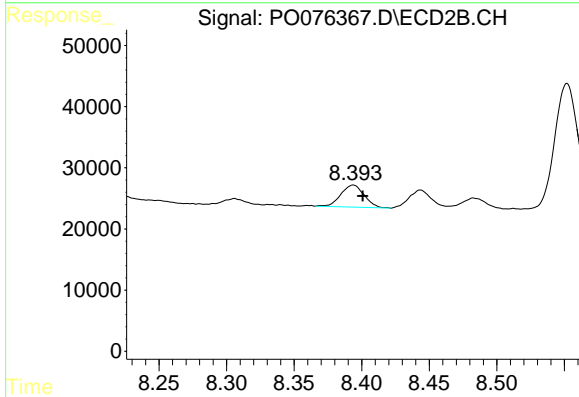




#43 AR-1268-3

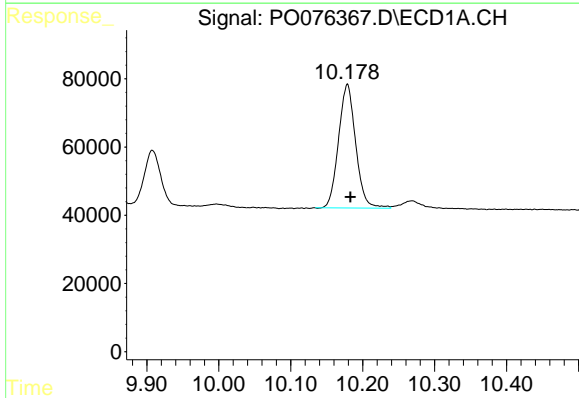
R.T.: 9.744 min  
 Delta R.T.: -0.006 min  
 Response: 43497  
 Conc: 9.38 ng/ml

**Instrument :**  
 ECD\_O  
**ClientSampleId :**  
 SB-3A-(0.5-1.0)MSD



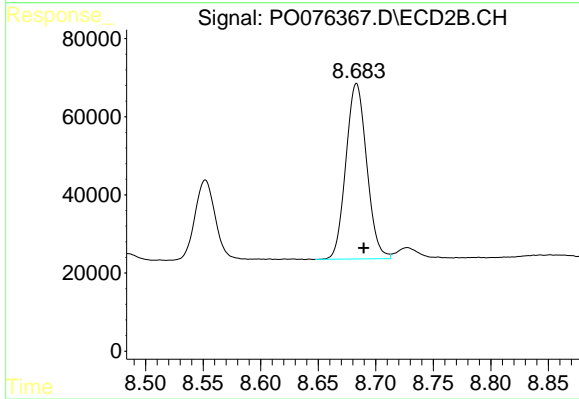
#43 AR-1268-3

R.T.: 8.394 min  
 Delta R.T.: -0.007 min  
 Response: 43504  
 Conc: 9.17 ng/ml



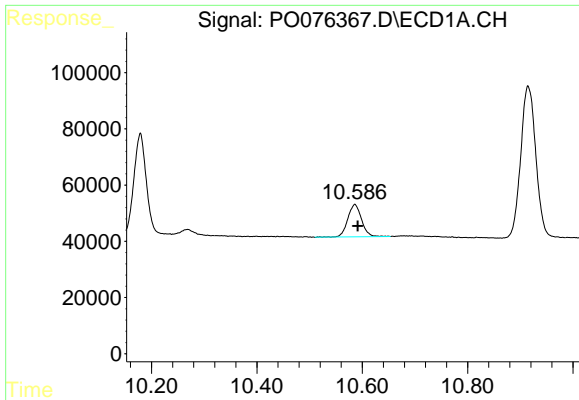
#44 AR-1268-4

R.T.: 10.179 min  
 Delta R.T.: -0.004 min  
 Response: 600075  
 Conc: 344.32 ng/ml



#44 AR-1268-4

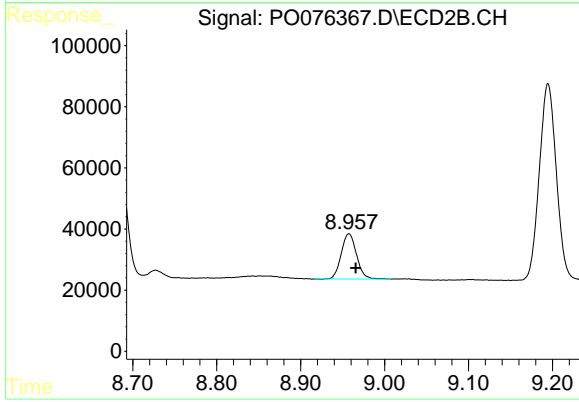
R.T.: 8.683 min  
 Delta R.T.: -0.006 min  
 Response: 567925  
 Conc: 305.61 ng/ml



#45 AR-1268-5

R.T.: 10.586 min  
Delta R.T.: -0.005 min  
Response: 207135  
Conc: 15.04 ng/ml

Instrument :  
ECD\_O  
ClientSampleId :  
SB-3A-(0.5-1.0)MSD



#45 AR-1268-5

R.T.: 8.958 min  
Delta R.T.: -0.008 min  
Response: 188116  
Conc: 14.10 ng/ml