

Data Path : Z:\pestpcbsrv\HPCHEM1\ECD\_0\Data\P0031921\  
 Data File : P0076389.D  
 Signal(s) : Signal #1: ECD1A.CH Signal #2: ECD2B.CH  
 Acq On : 19 Mar 2021 21:35  
 Operator : DD\AJ  
 Sample : AR1262CCC500  
 Misc :  
 ALS Vial : 7 Sample Multiplier: 1

Instrument :  
 ECD\_0  
 ClientSampled :

Integration File signal 1: autoint1.e  
 Integration File signal 2: autoint2.e  
 Quant Time: Mar 19 22:43:09 2021  
 Quant Method : Z:\pestpcbsrv\HPCHEM1\ECD\_0\methods\P0031521.M  
 Quant Title : GC EXTRACTABLES  
 QLast Update : Tue Mar 16 07:18:57 2021  
 Response via : Initial Calibration  
 Integrator: ChemStation 6890 Scale Mode: Small noise peaks clipped

Volume Inj. : 2 µl  
 Signal #1 Phase : ZB-MR1 Signal #2 Phase: ZB-MR2  
 Signal #1 Info : 30Mx0.32mmx 0.50µ Signal #2 Info : 30M x 0.32mm x 0.25µm

Compound	RT#1	RT#2	Resp#1	Resp#2	ng/ml	ng/ml
System Monitoring Compounds						
1) SA Tetrachlo...	4.921	3.933	3112951	2224852	54.796	53.326
2) SA Decachlor...	10.917	9.195	2292927	1976911	59.613	51.485
Target Compounds						
3) L1 AR-1016-1	6.266f	5.181	33733	17676	20.473	15.103 #
4) L1 AR-1016-2	6.266	5.201	33733	30331	13.202	13.768
6) L1 AR-1016-4	0.000	5.440	0	20702	N.D.	21.106 #
9) L2 AR-1221-2	5.273	4.283	37390	28586	91.286	87.533
12) L3 AR-1232-2	0.000	5.201	0	30331	N.D.	32.137 #
13) L3 AR-1232-3	6.266	0.000	33733	0	32.381	N.D. #
15) L3 AR-1232-5	6.537	0.000	27251	0	73.166	N.D. #
16) L4 AR-1242-1	6.266f	5.181	33733	17676	26.712	19.924 #
17) L4 AR-1242-2	6.266	5.201	33733	30331	17.020	17.524
20) L4 AR-1242-5	7.224	6.045	62586	158726	62.295	157.498 #
21) L5 AR-1248-1	6.266f	5.181	33733	17676	35.781	25.738 #
22) L5 AR-1248-2	6.537	5.440	27251	20702	18.090	16.000
24) L5 AR-1248-4	7.184	0.000	99870	0	56.766	N.D. #
25) L5 AR-1248-5	7.224	0.000	62586	0	35.387	N.D. #
26) L6 AR-1254-1	7.153	6.045	298250	158726	145.530	69.449 #
27) L6 AR-1254-2	7.383	6.204	203733	176610	65.561	89.172 #
28) L6 AR-1254-3	7.767	6.641	213264	743205	67.034	246.745 #
29) L6 AR-1254-4	8.061	6.863	398425	66610	190.166	37.746 #
30) L6 AR-1254-5	8.489	7.288	1139848	782492	496.304	298.881 #
31) L7 AR-1260-1	7.932	6.759	1252486	1004249	538.696	488.853
32) L7 AR-1260-2	8.198	6.957	1411769	1135817	552.911	468.332
33) L7 AR-1260-3	8.564	7.111	1704853	1039141	859.969	459.462 #
34) L7 AR-1260-4	8.796	7.591	1512169	1348224	669.353	699.653
35) L7 AR-1260-5	9.120	7.839	2677539	2614020	655.047	591.269
36) L8 AR-1262-1	8.564	7.288	1704853	782492	576.227	535.809
37) L8 AR-1262-2	9.120	7.839	2677539	2614020	553.095	527.701
38) L8 AR-1262-3	9.428	8.125	1811576	1098176	548.157	511.166
39) L8 AR-1262-4	9.521	8.188	728277	1974646	283.305	522.082 #
40) L8 AR-1262-5	10.179	8.684	971051	908604	590.325	524.873
41) L9 AR-1268-1	9.428	8.125	1811576	1098176	310.990	186.987 #
42) L9 AR-1268-2	9.521	8.188	728277	1974646	137.284	370.737 #
43) L9 AR-1268-3	9.746	8.394	83386	78054	17.987	16.457
44) L9 AR-1268-4	10.179	8.684	971051	908604	557.181	488.930
45) L9 AR-1268-5	10.587	8.959	377290	354030	27.404	26.528

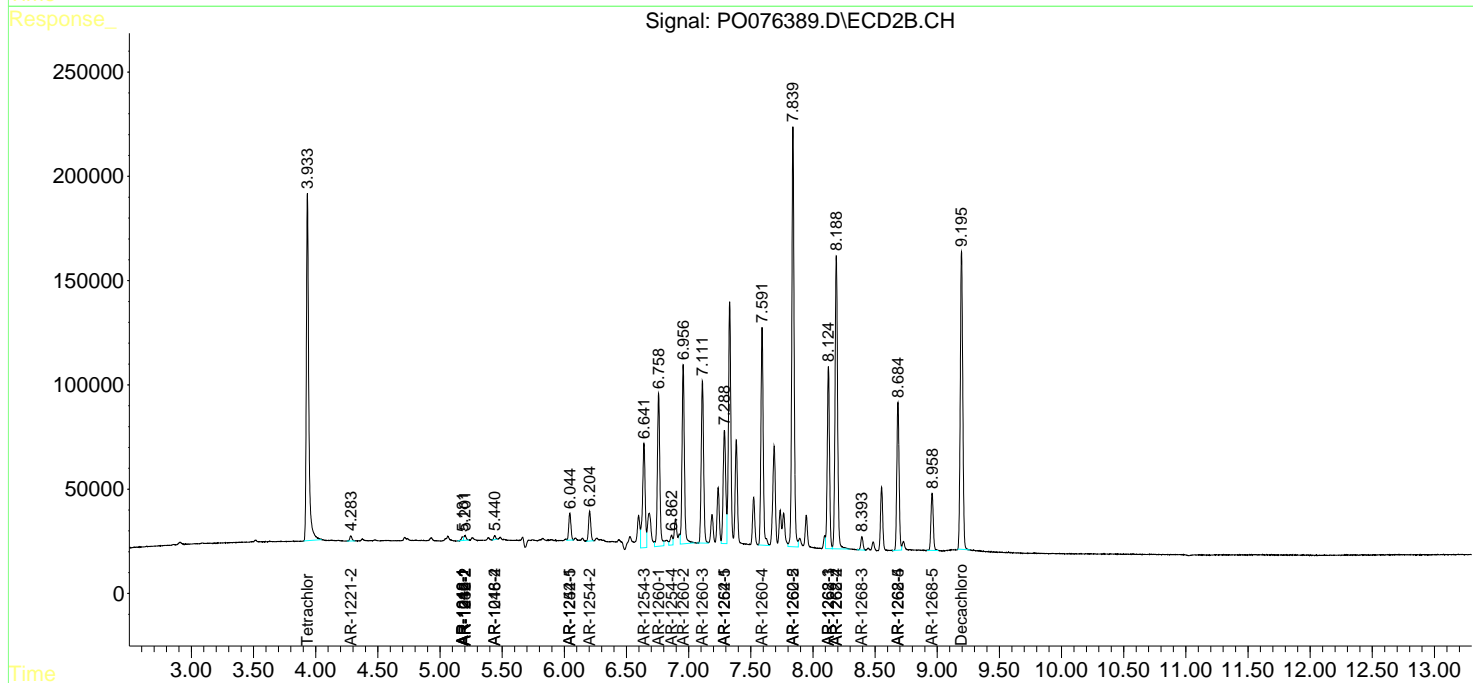
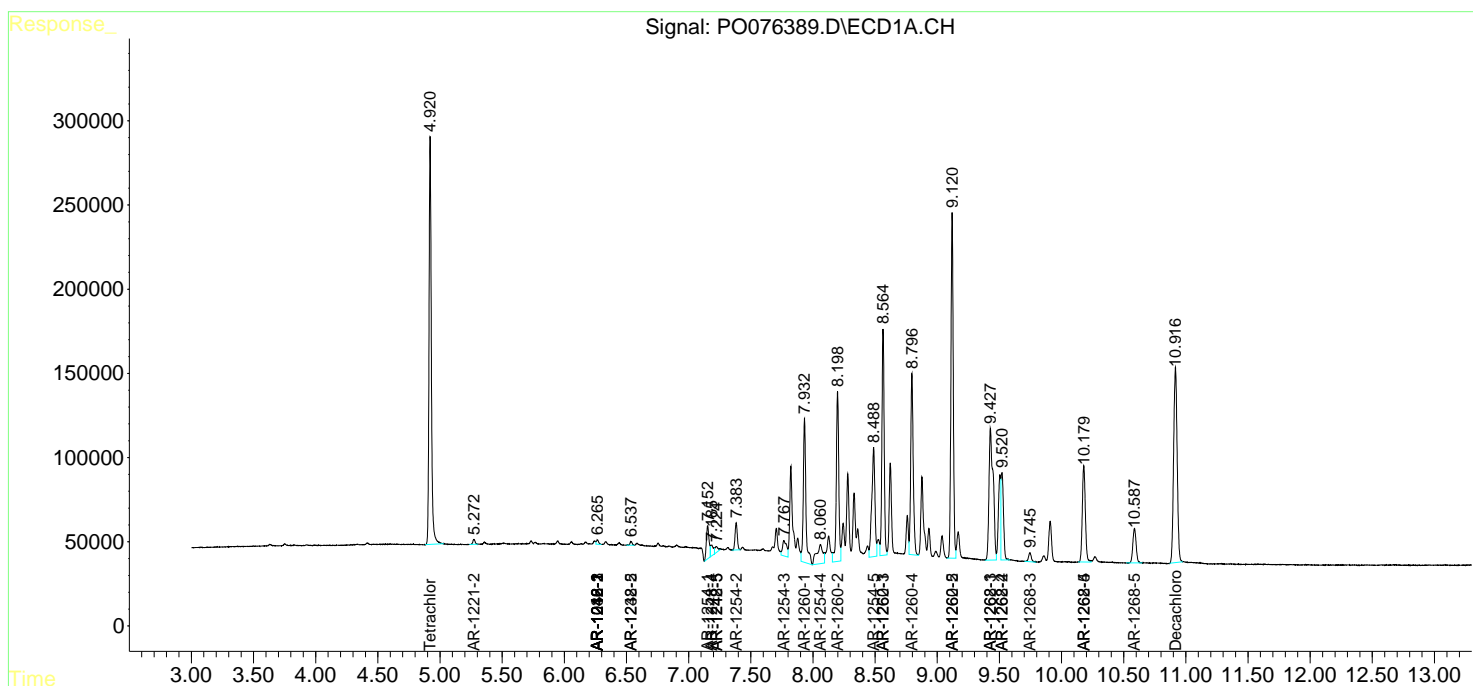
(f)=RT Delta > 1/2 Window (#)=Amounts differ by > 25% (m)=manual int.

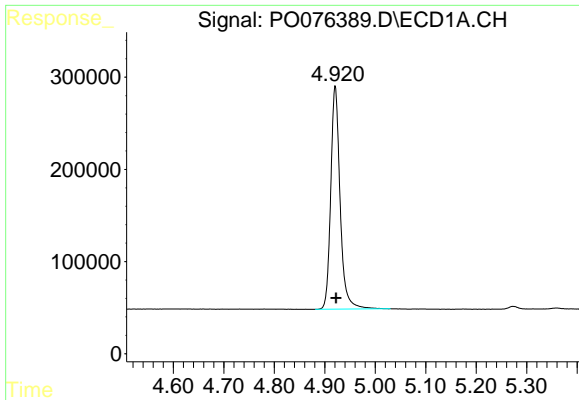
Data Path : Z:\pestpcbsrv\HPCHEM1\ECD\_0\Data\P0031921\  
 Data File : P0076389.D  
 Signal(s) : Signal #1: ECD1A.CH Signal #2: ECD2B.CH  
 Acq On : 19 Mar 2021 21:35  
 Operator : DD\AJ  
 Sample : AR1262CCC500  
 Misc :  
 ALS Vial : 7 Sample Multiplier: 1

Instrument :  
 ECD\_O  
 ClientSampled :

Integration File signal 1: autoint1.e  
 Integration File signal 2: autoint2.e  
 Quant Time: Mar 19 22:43:09 2021  
 Quant Method : Z:\pestpcbsrv\HPCHEM1\ECD\_0\methods\P0031521.M  
 Quant Title : GC EXTRACTABLES  
 QLast Update : Tue Mar 16 07:18:57 2021  
 Response via : Initial Calibration  
 Integrator: ChemStation 6890 Scale Mode: Small noise peaks clipped

Volume Inj. : 2 µl  
 Signal #1 Phase : ZB-MR1 Signal #2 Phase: ZB-MR2  
 Signal #1 Info : 30Mx0.32mmx 0.50µ Signal #2 Info : 30M x 0.32mm x 0.25µm

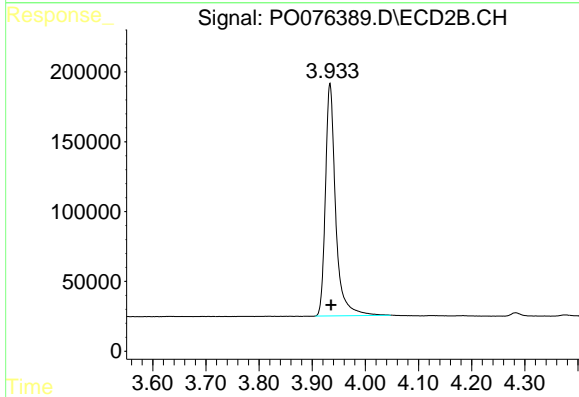




#1 Tetrachloro-m-xylene

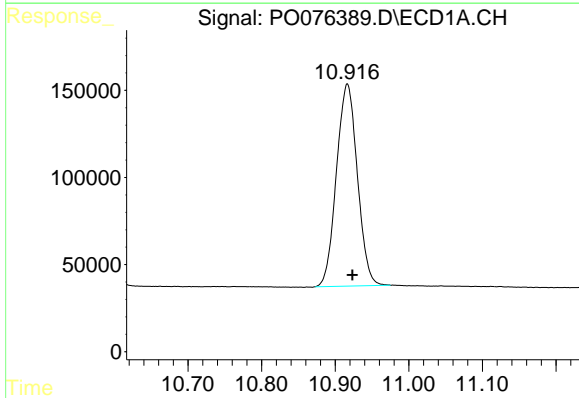
R.T.: 4.921 min  
 Delta R.T.: -0.001 min  
 Response: 3112951  
 Conc: 54.80 ng/ml

Instrument :  
 ECD\_O  
 ClientSampleId :



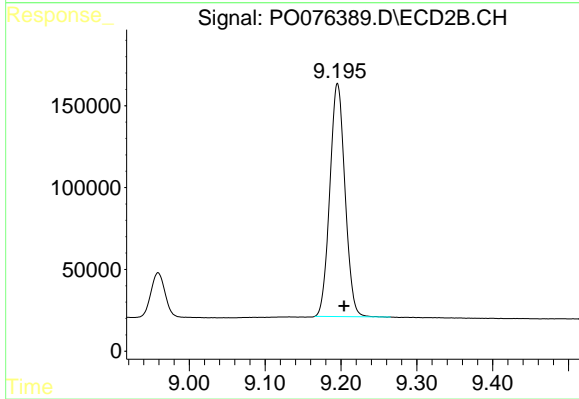
#1 Tetrachloro-m-xylene

R.T.: 3.933 min  
 Delta R.T.: -0.002 min  
 Response: 2224852  
 Conc: 53.33 ng/ml



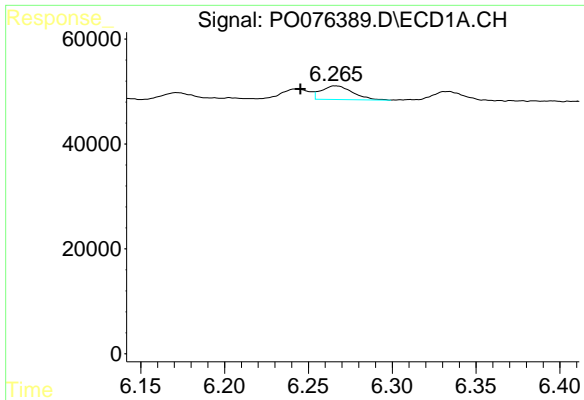
#2 Decachlorobiphenyl

R.T.: 10.917 min  
 Delta R.T.: -0.007 min  
 Response: 2292927  
 Conc: 59.61 ng/ml



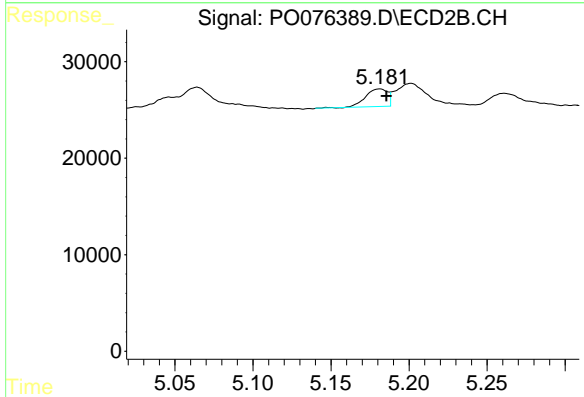
#2 Decachlorobiphenyl

R.T.: 9.195 min  
 Delta R.T.: -0.009 min  
 Response: 1976911  
 Conc: 51.49 ng/ml

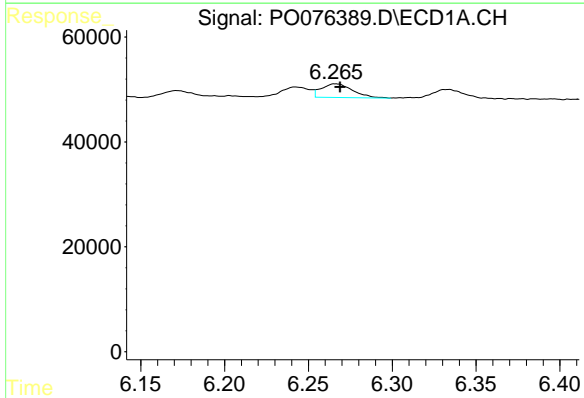


#3 AR-1016-1  
 R.T.: 6.266 min  
 Delta R.T.: 0.021 min  
 Response: 33733  
 Conc: 20.47 ng/ml

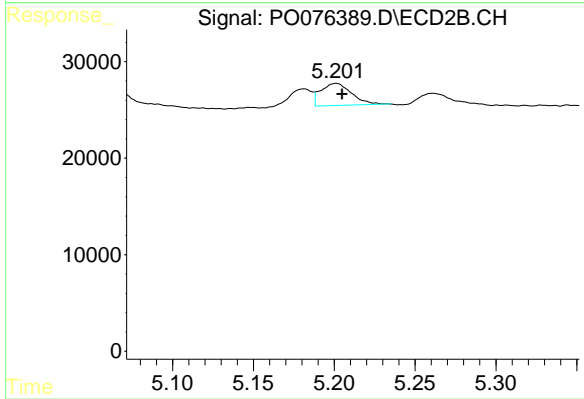
Instrument :  
 ECD\_O  
 ClientSampleId :



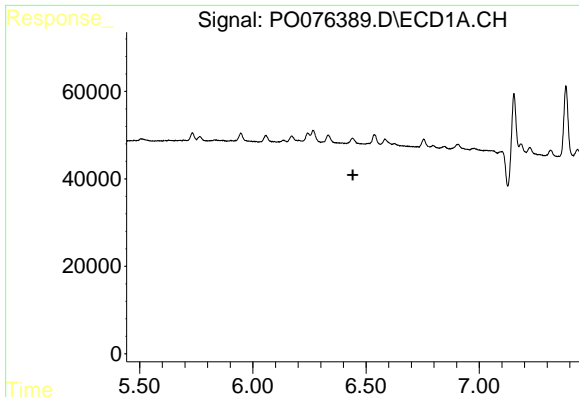
#3 AR-1016-1  
 R.T.: 5.181 min  
 Delta R.T.: -0.004 min  
 Response: 17676  
 Conc: 15.10 ng/ml



#4 AR-1016-2  
 R.T.: 6.266 min  
 Delta R.T.: -0.003 min  
 Response: 33733  
 Conc: 13.20 ng/ml



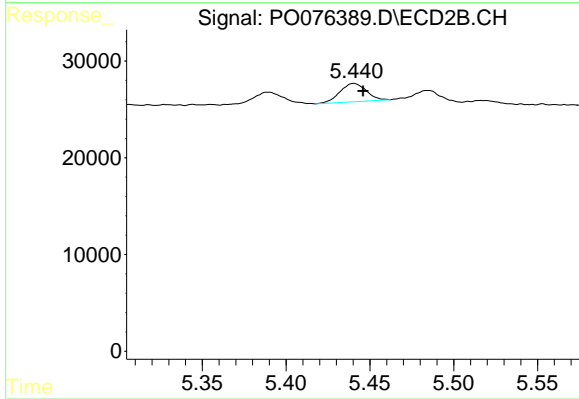
#4 AR-1016-2  
 R.T.: 5.201 min  
 Delta R.T.: -0.004 min  
 Response: 30331  
 Conc: 13.77 ng/ml



#6 AR-1016-4

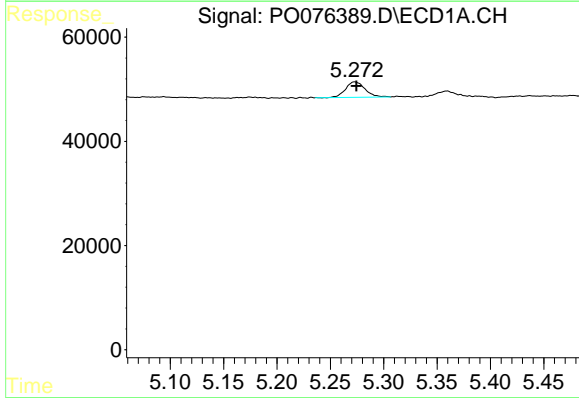
R.T.: 0.000 min  
 Exp R.T.: 6.442 min  
 Response: 0  
 Conc: N.D.

Instrument :  
 ECD\_O  
 ClientSampleId :



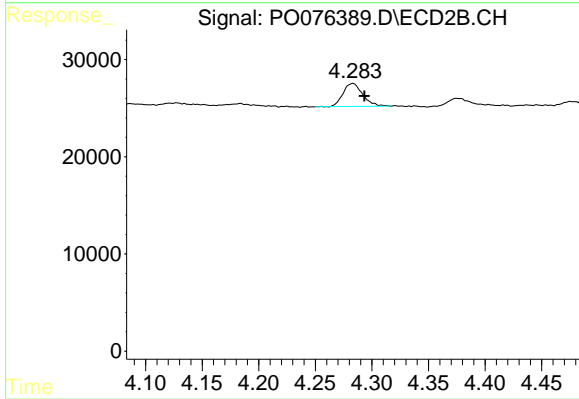
#6 AR-1016-4

R.T.: 5.440 min  
 Delta R.T.: -0.005 min  
 Response: 20702  
 Conc: 21.11 ng/ml



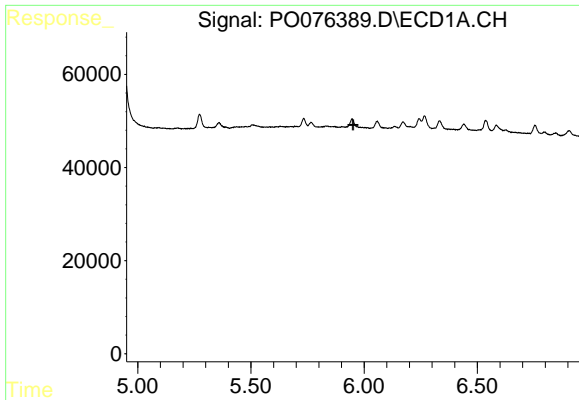
#9 AR-1221-2

R.T.: 5.273 min  
 Delta R.T.: -0.001 min  
 Response: 37390  
 Conc: 91.29 ng/ml



#9 AR-1221-2

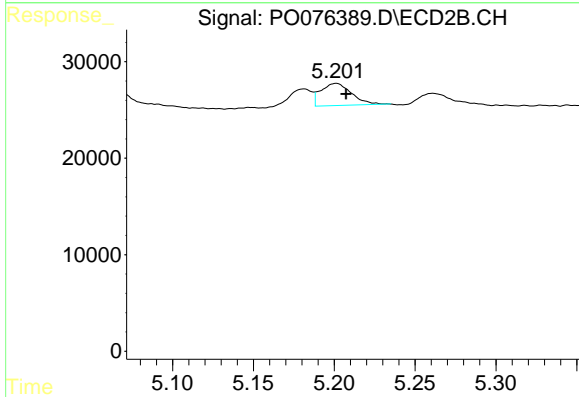
R.T.: 4.283 min  
 Delta R.T.: -0.010 min  
 Response: 28586  
 Conc: 87.53 ng/ml



#12 AR-1232-2

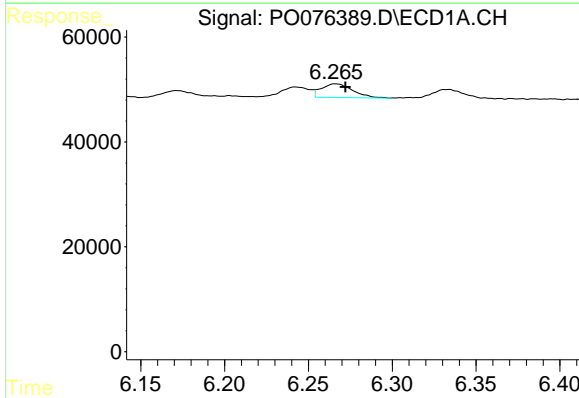
R.T.: 0.000 min  
 Exp R.T.: 5.951 min  
 Response: 0  
 Conc: N.D.

Instrument :  
 ECD\_O  
 ClientSampleId :



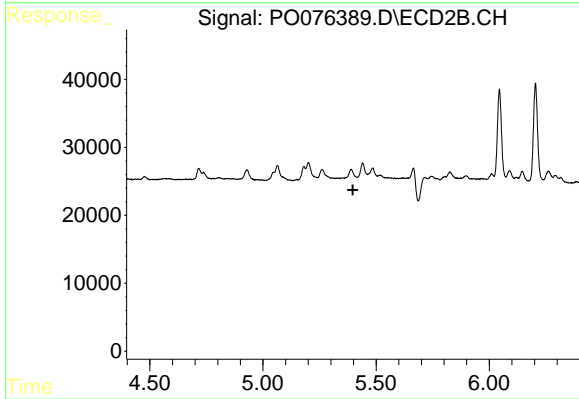
#12 AR-1232-2

R.T.: 5.201 min  
 Delta R.T.: -0.006 min  
 Response: 30331  
 Conc: 32.14 ng/ml



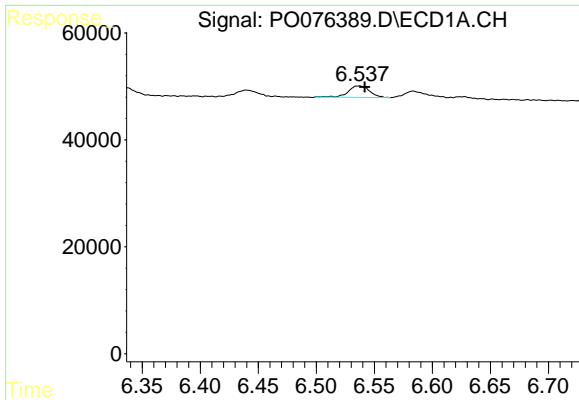
#13 AR-1232-3

R.T.: 6.266 min  
 Delta R.T.: -0.006 min  
 Response: 33733  
 Conc: 32.38 ng/ml



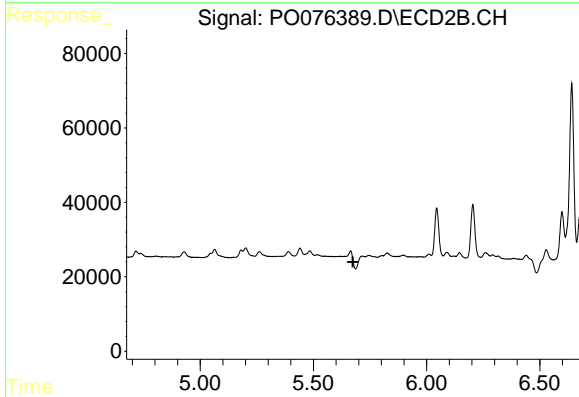
#13 AR-1232-3

R.T.: 0.000 min  
 Exp R.T.: 5.397 min  
 Response: 0  
 Conc: N.D.

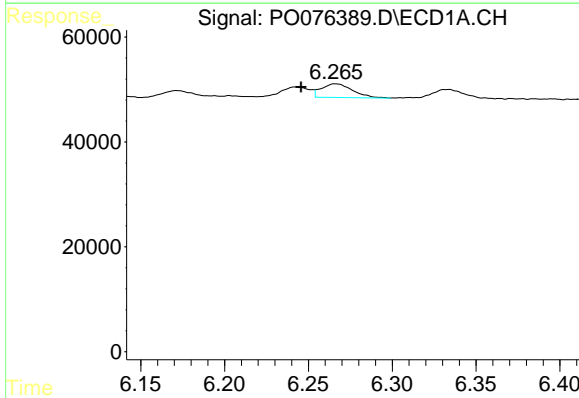


#15 AR-1232-5  
 R.T.: 6.537 min  
 Delta R.T.: -0.005 min  
 Response: 27251  
 Conc: 73.17 ng/ml

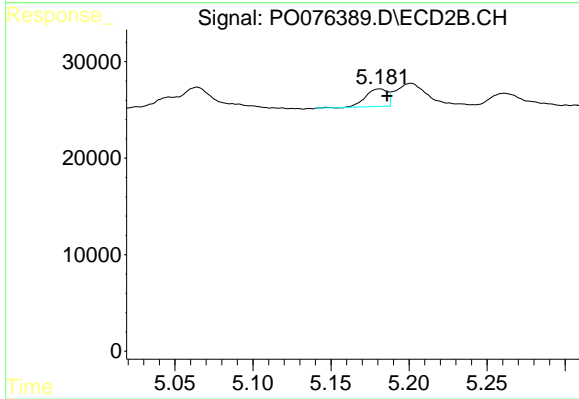
Instrument :  
 ECD\_O  
 ClientSampled :



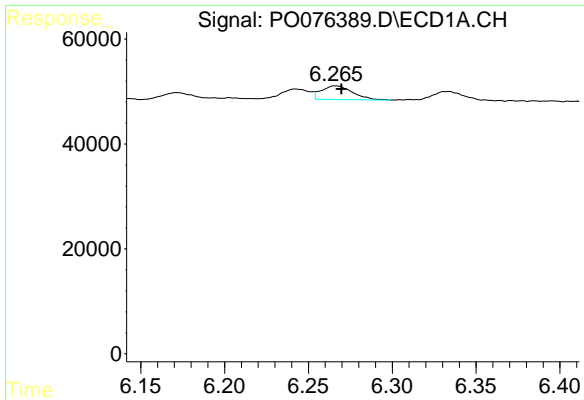
#15 AR-1232-5  
 R.T.: 0.000 min  
 Exp R.T. : 5.674 min  
 Response: 0  
 Conc: N.D.



#16 AR-1242-1  
 R.T.: 6.266 min  
 Delta R.T.: 0.021 min  
 Response: 33733  
 Conc: 26.71 ng/ml



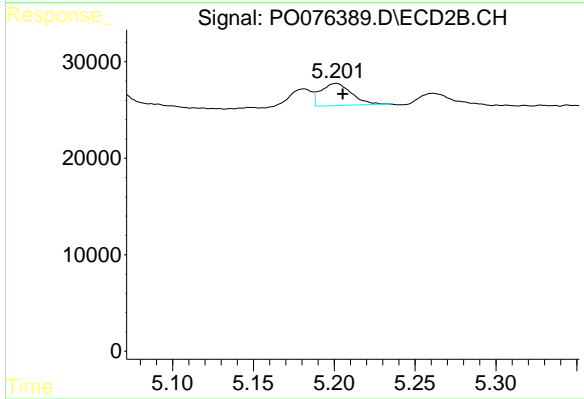
#16 AR-1242-1  
 R.T.: 5.181 min  
 Delta R.T.: -0.005 min  
 Response: 17676  
 Conc: 19.92 ng/ml



#17 AR-1242-2

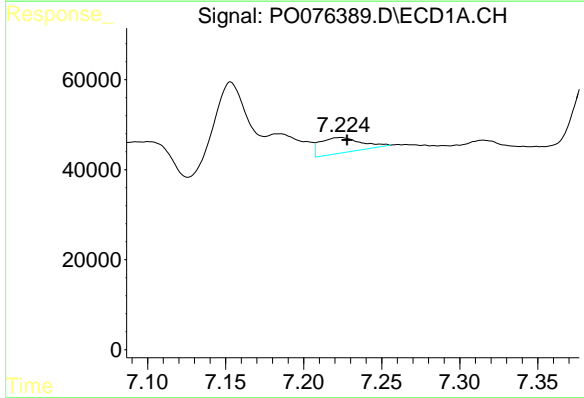
R.T.: 6.266 min  
 Delta R.T.: -0.003 min  
 Response: 33733  
 Conc: 17.02 ng/ml

Instrument :  
 ECD\_O  
 ClientSampleId :



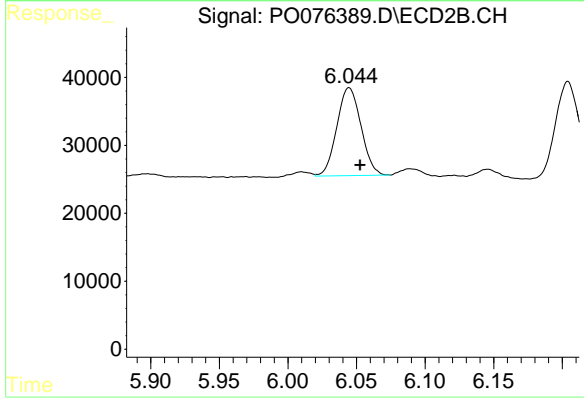
#17 AR-1242-2

R.T.: 5.201 min  
 Delta R.T.: -0.004 min  
 Response: 30331  
 Conc: 17.52 ng/ml



#20 AR-1242-5

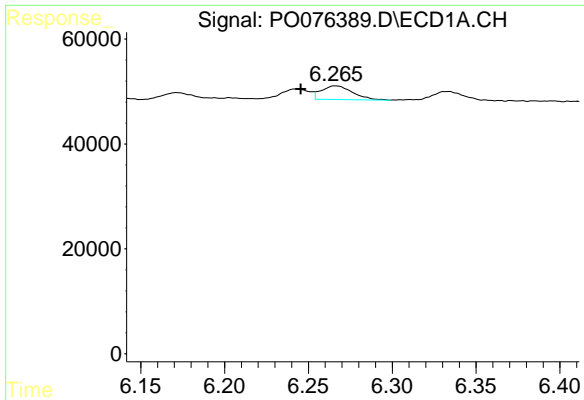
R.T.: 7.224 min  
 Delta R.T.: -0.004 min  
 Response: 62586  
 Conc: 62.29 ng/ml



#20 AR-1242-5

R.T.: 6.045 min  
 Delta R.T.: -0.008 min  
 Response: 158726  
 Conc: 157.50 ng/ml

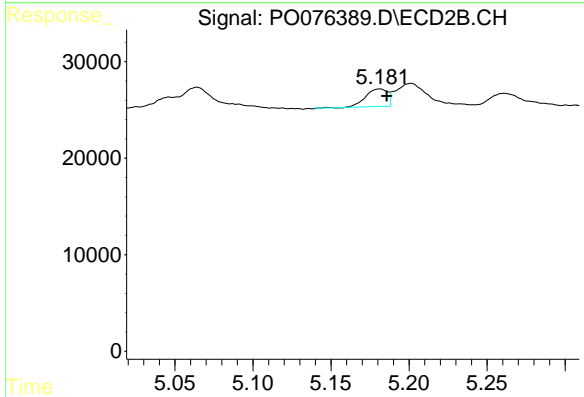




#21 AR-1248-1

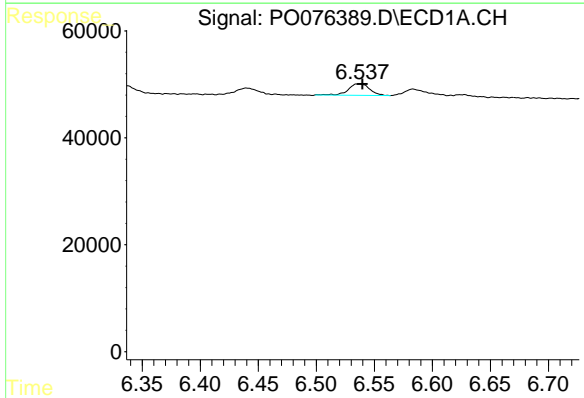
R.T.: 6.266 min  
 Delta R.T.: 0.021 min  
 Response: 33733  
 Conc: 35.78 ng/ml

Instrument :  
 ECD\_O  
 ClientSampleId :



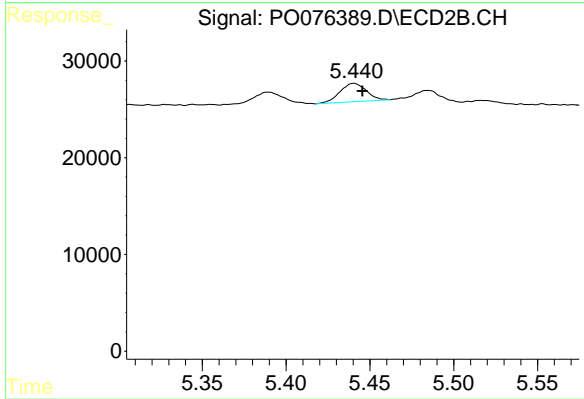
#21 AR-1248-1

R.T.: 5.181 min  
 Delta R.T.: -0.005 min  
 Response: 17676  
 Conc: 25.74 ng/ml



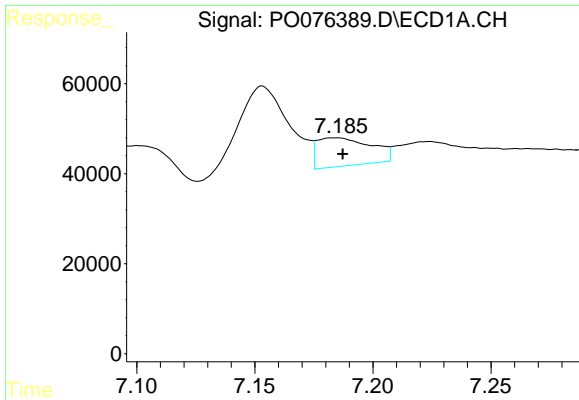
#22 AR-1248-2

R.T.: 6.537 min  
 Delta R.T.: -0.003 min  
 Response: 27251  
 Conc: 18.09 ng/ml



#22 AR-1248-2

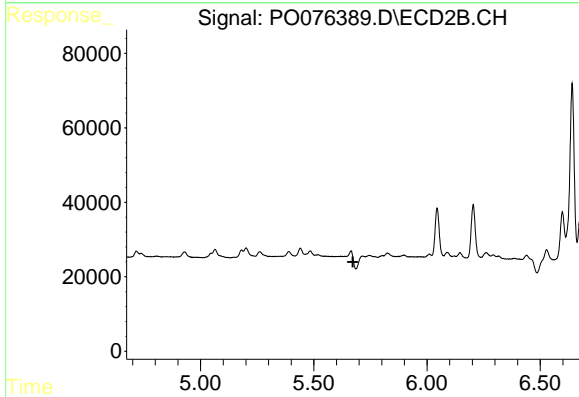
R.T.: 5.440 min  
 Delta R.T.: -0.005 min  
 Response: 20702  
 Conc: 16.00 ng/ml



#24 AR-1248-4

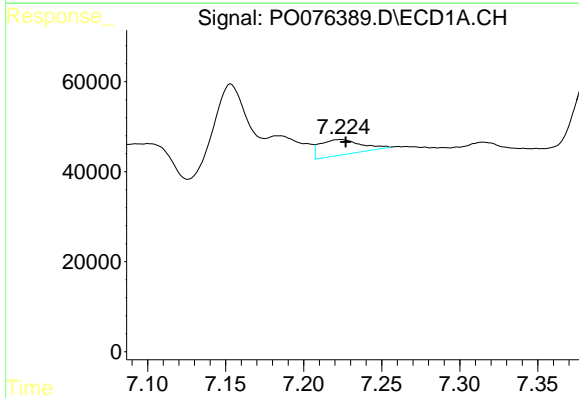
R.T.: 7.184 min  
 Delta R.T.: -0.003 min  
 Response: 99870  
 Conc: 56.77 ng/ml

Instrument :  
 ECD\_O  
 ClientSampleId :



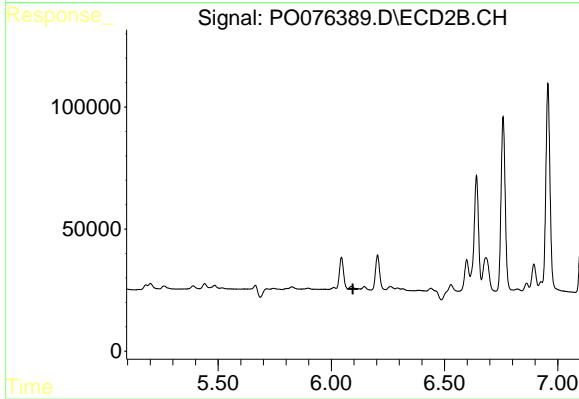
#24 AR-1248-4

R.T.: 0.000 min  
 Exp R.T. : 5.673 min  
 Response: 0  
 Conc: N.D.



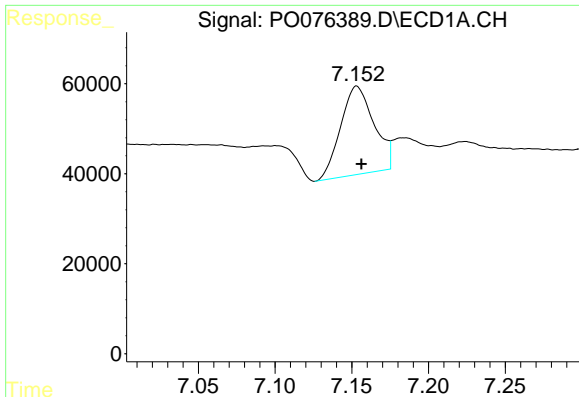
#25 AR-1248-5

R.T.: 7.224 min  
 Delta R.T.: -0.003 min  
 Response: 62586  
 Conc: 35.39 ng/ml



#25 AR-1248-5

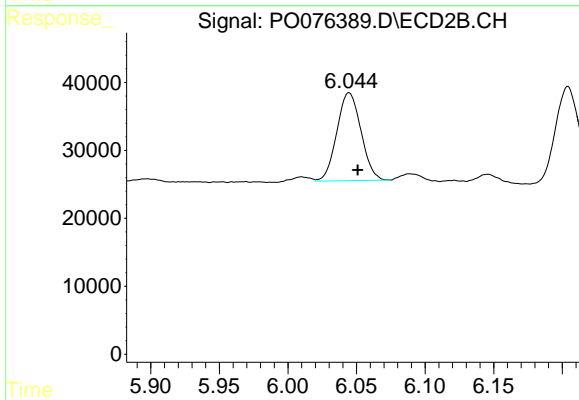
R.T.: 0.000 min  
 Exp R.T. : 6.095 min  
 Response: 0  
 Conc: N.D.



#26 AR-1254-1

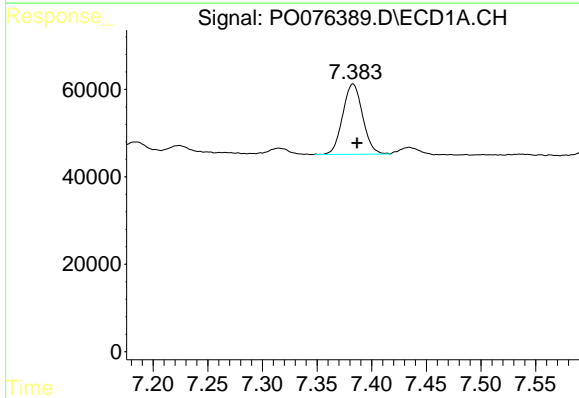
R.T.: 7.153 min  
 Delta R.T.: -0.003 min  
 Response: 298250  
 Conc: 145.53 ng/ml

Instrument :  
 ECD\_O  
 ClientSampleId :



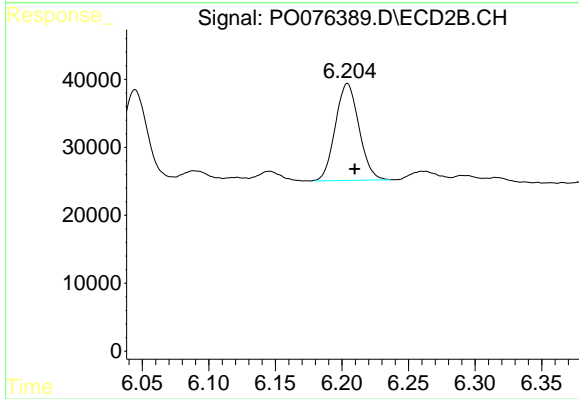
#26 AR-1254-1

R.T.: 6.045 min  
 Delta R.T.: -0.006 min  
 Response: 158726  
 Conc: 69.45 ng/ml



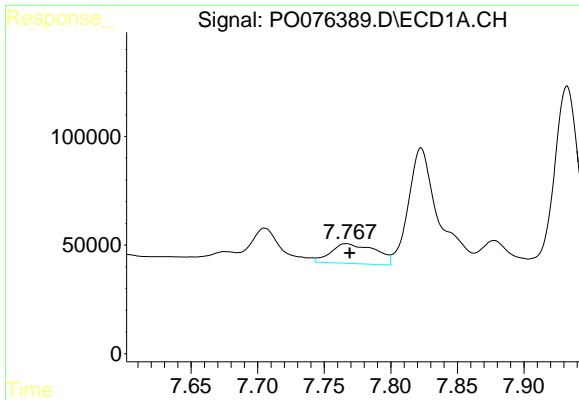
#27 AR-1254-2

R.T.: 7.383 min  
 Delta R.T.: -0.004 min  
 Response: 203733  
 Conc: 65.56 ng/ml



#27 AR-1254-2

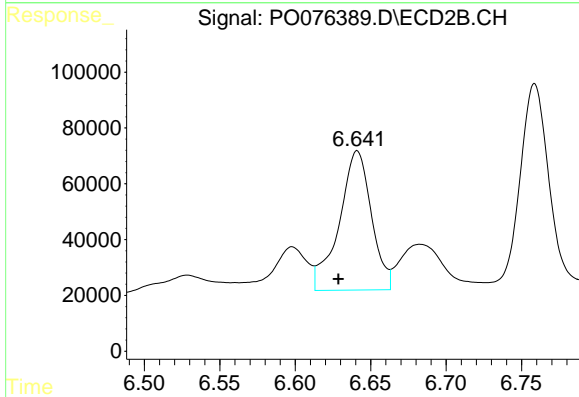
R.T.: 6.204 min  
 Delta R.T.: -0.005 min  
 Response: 176610  
 Conc: 89.17 ng/ml



#28 AR-1254-3

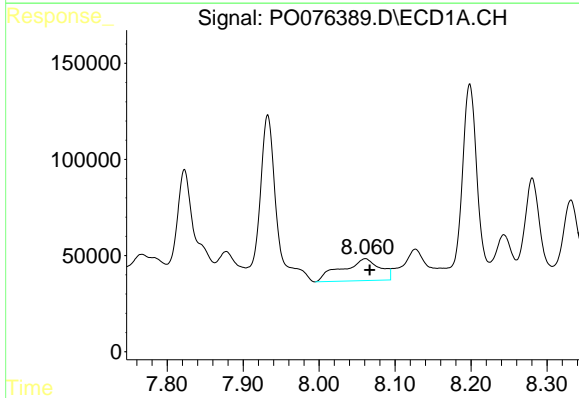
R.T.: 7.767 min  
 Delta R.T.: -0.002 min  
 Response: 213264  
 Conc: 67.03 ng/ml

Instrument :  
 ECD\_O  
 ClientSampleId :



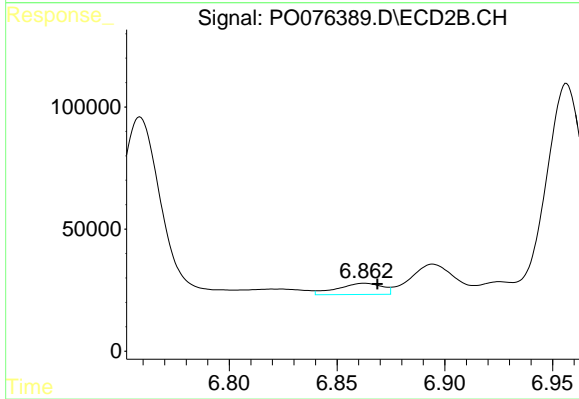
#28 AR-1254-3

R.T.: 6.641 min  
 Delta R.T.: 0.012 min  
 Response: 743205  
 Conc: 246.75 ng/ml



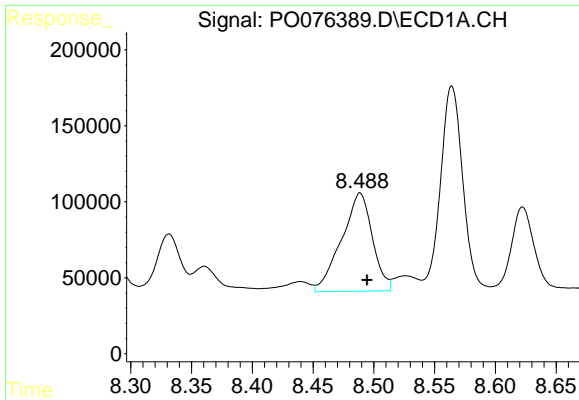
#29 AR-1254-4

R.T.: 8.061 min  
 Delta R.T.: -0.006 min  
 Response: 398425  
 Conc: 190.17 ng/ml



#29 AR-1254-4

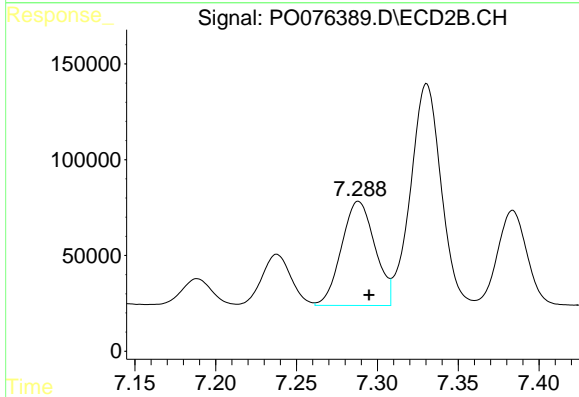
R.T.: 6.863 min  
 Delta R.T.: -0.006 min  
 Response: 66610  
 Conc: 37.75 ng/ml



#30 AR-1254-5

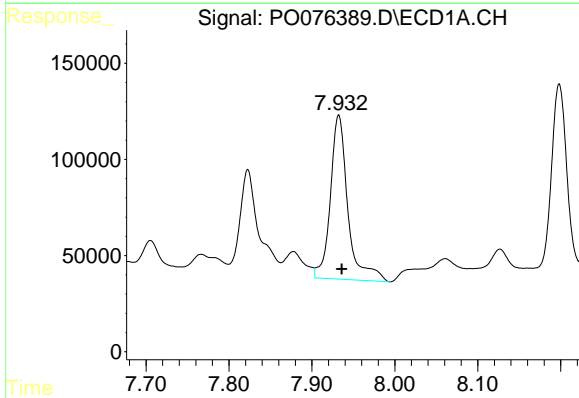
R.T.: 8.489 min  
 Delta R.T.: -0.006 min  
 Response: 1139848  
 Conc: 496.30 ng/ml

Instrument :  
 ECD\_O  
 ClientSampled :



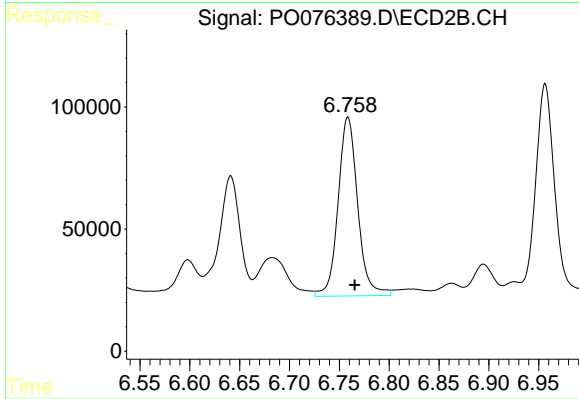
#30 AR-1254-5

R.T.: 7.288 min  
 Delta R.T.: -0.007 min  
 Response: 782492  
 Conc: 298.88 ng/ml



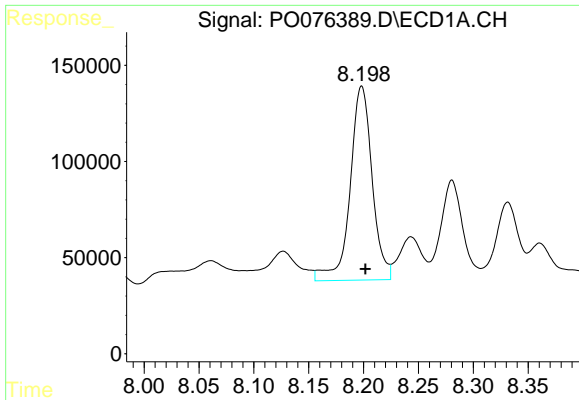
#31 AR-1260-1

R.T.: 7.932 min  
 Delta R.T.: -0.004 min  
 Response: 1252486  
 Conc: 538.70 ng/ml



#31 AR-1260-1

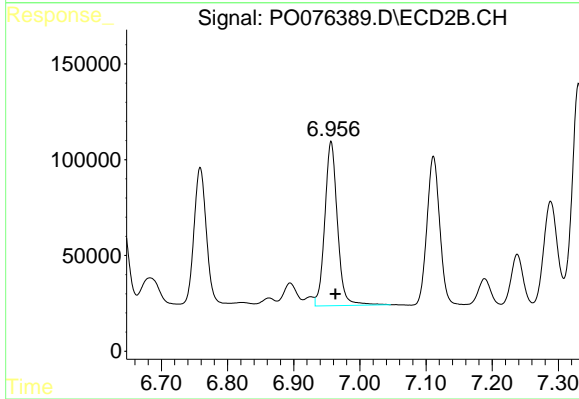
R.T.: 6.759 min  
 Delta R.T.: -0.007 min  
 Response: 1004249  
 Conc: 488.85 ng/ml



#32 AR-1260-2

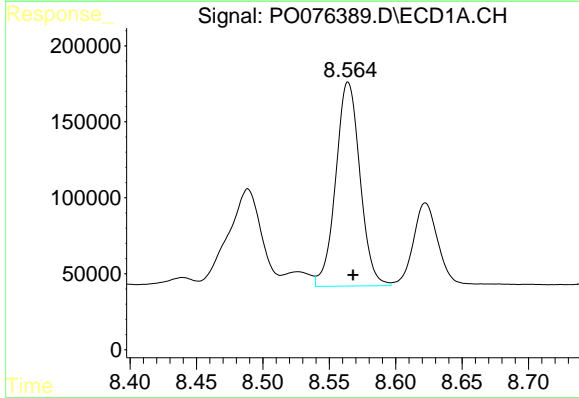
R.T.: 8.198 min  
 Delta R.T.: -0.004 min  
 Response: 1411769  
 Conc: 552.91 ng/ml

Instrument :  
 ECD\_O  
 ClientSampled :



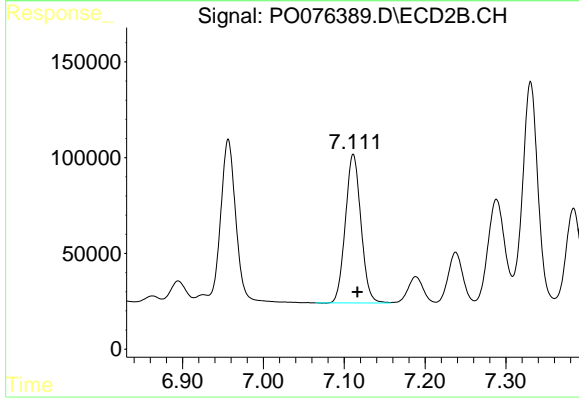
#32 AR-1260-2

R.T.: 6.957 min  
 Delta R.T.: -0.007 min  
 Response: 1135817  
 Conc: 468.33 ng/ml



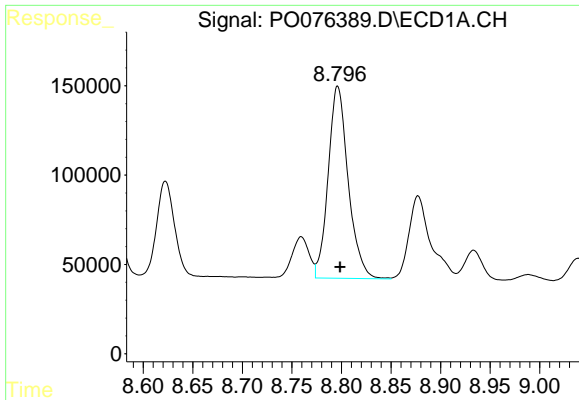
#33 AR-1260-3

R.T.: 8.564 min  
 Delta R.T.: -0.004 min  
 Response: 1704853  
 Conc: 859.97 ng/ml



#33 AR-1260-3

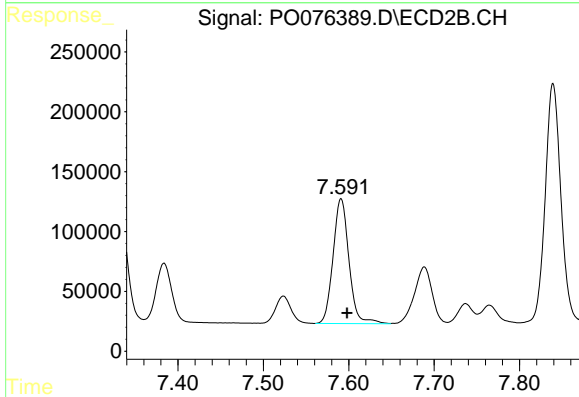
R.T.: 7.111 min  
 Delta R.T.: -0.005 min  
 Response: 1039141  
 Conc: 459.46 ng/ml



#34 AR-1260-4

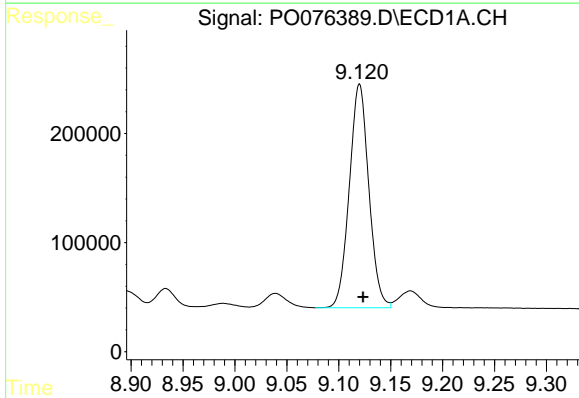
R.T.: 8.796 min  
 Delta R.T.: -0.002 min  
 Response: 1512169  
 Conc: 669.35 ng/ml

Instrument :  
 ECD\_O  
 ClientSampled :



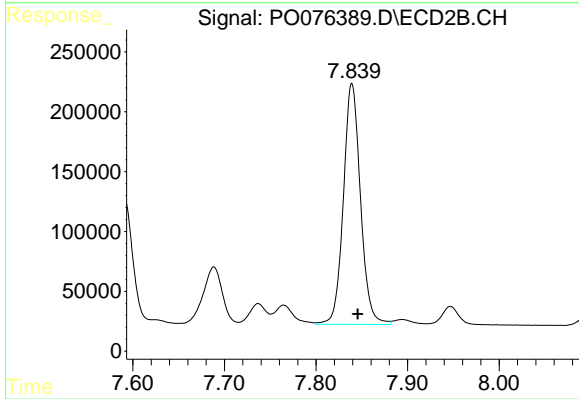
#34 AR-1260-4

R.T.: 7.591 min  
 Delta R.T.: -0.007 min  
 Response: 1348224  
 Conc: 699.65 ng/ml



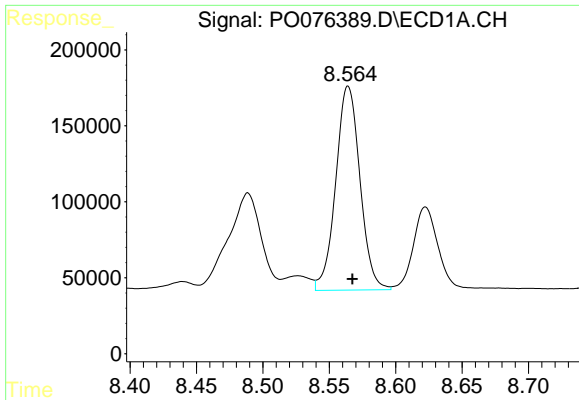
#35 AR-1260-5

R.T.: 9.120 min  
 Delta R.T.: -0.003 min  
 Response: 2677539  
 Conc: 655.05 ng/ml



#35 AR-1260-5

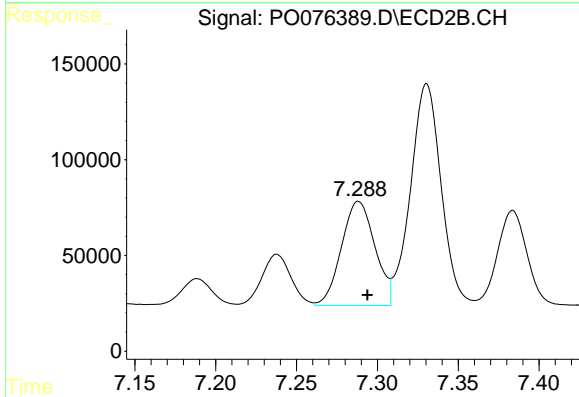
R.T.: 7.839 min  
 Delta R.T.: -0.006 min  
 Response: 2614020  
 Conc: 591.27 ng/ml



#36 AR-1262-1

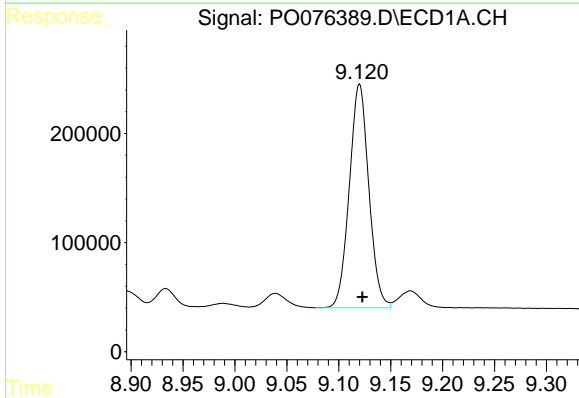
R.T.: 8.564 min  
 Delta R.T.: -0.003 min  
 Response: 1704853  
 Conc: 576.23 ng/ml

Instrument :  
 ECD\_O  
 ClientSampled :



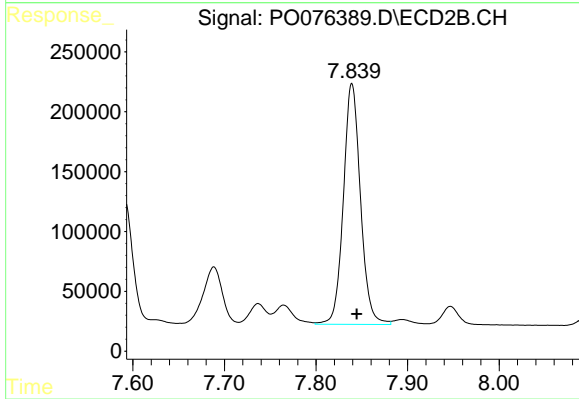
#36 AR-1262-1

R.T.: 7.288 min  
 Delta R.T.: -0.005 min  
 Response: 782492  
 Conc: 535.81 ng/ml



#37 AR-1262-2

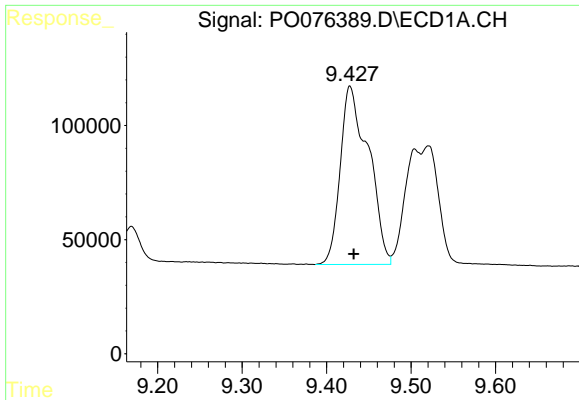
R.T.: 9.120 min  
 Delta R.T.: -0.003 min  
 Response: 2677539  
 Conc: 553.09 ng/ml



#37 AR-1262-2

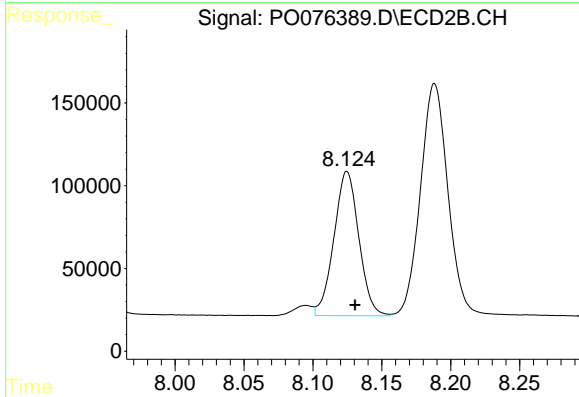
R.T.: 7.839 min  
 Delta R.T.: -0.005 min  
 Response: 2614020  
 Conc: 527.70 ng/ml



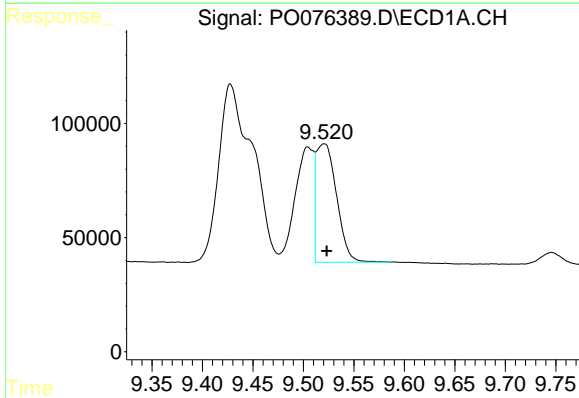


#38 AR-1262-3  
 R.T.: 9.428 min  
 Delta R.T.: -0.004 min  
 Response: 1811576  
 Conc: 548.16 ng/ml

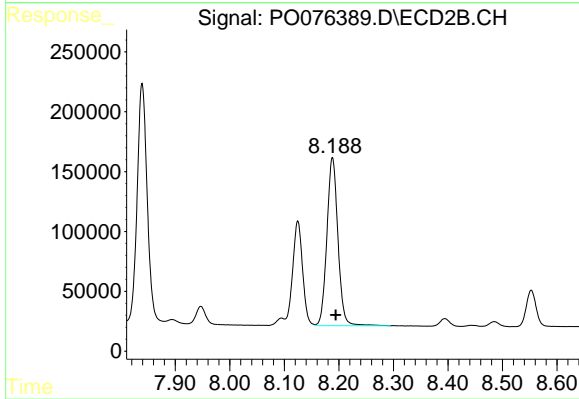
Instrument :  
 ECD\_O  
 ClientSampleId :



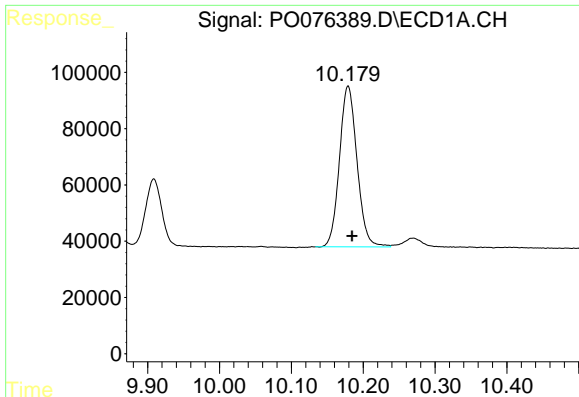
#38 AR-1262-3  
 R.T.: 8.125 min  
 Delta R.T.: -0.006 min  
 Response: 1098176  
 Conc: 511.17 ng/ml



#39 AR-1262-4  
 R.T.: 9.521 min  
 Delta R.T.: -0.002 min  
 Response: 728277  
 Conc: 283.30 ng/ml



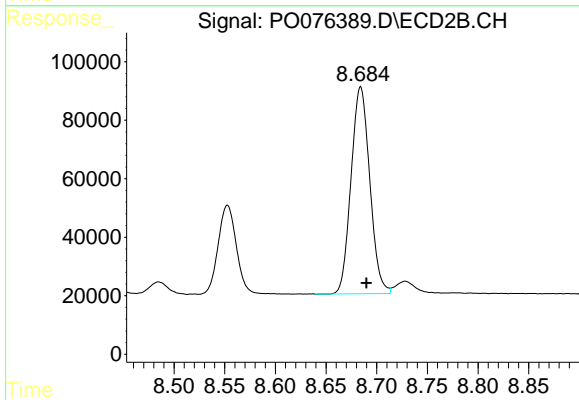
#39 AR-1262-4  
 R.T.: 8.188 min  
 Delta R.T.: -0.006 min  
 Response: 1974646  
 Conc: 522.08 ng/ml



#40 AR-1262-5

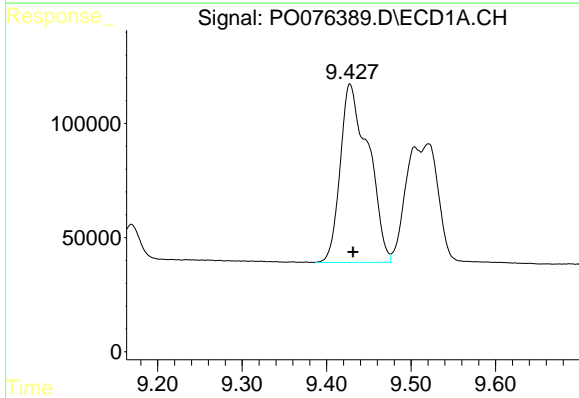
R.T.: 10.179 min  
 Delta R.T.: -0.005 min  
 Response: 971051  
 Conc: 590.33 ng/ml

Instrument :  
 ECD\_O  
 ClientSampled :



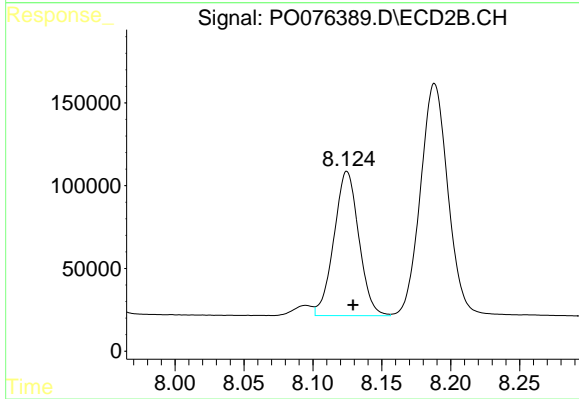
#40 AR-1262-5

R.T.: 8.684 min  
 Delta R.T.: -0.006 min  
 Response: 908604  
 Conc: 524.87 ng/ml



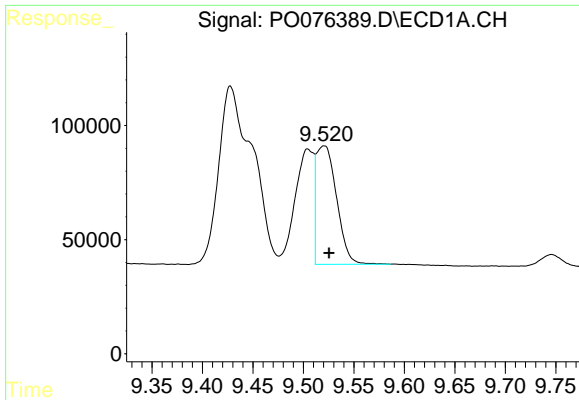
#41 AR-1268-1

R.T.: 9.428 min  
 Delta R.T.: -0.004 min  
 Response: 1811576  
 Conc: 310.99 ng/ml



#41 AR-1268-1

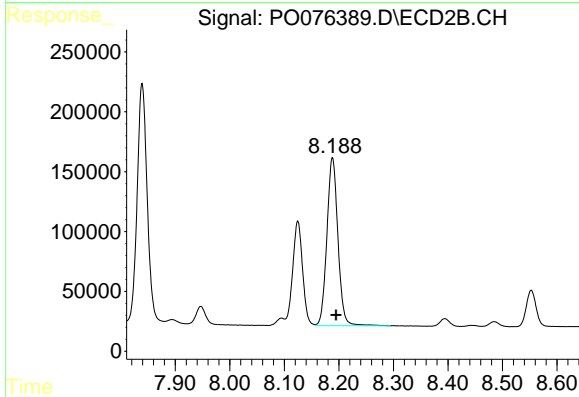
R.T.: 8.125 min  
 Delta R.T.: -0.005 min  
 Response: 1098176  
 Conc: 186.99 ng/ml



#42 AR-1268-2

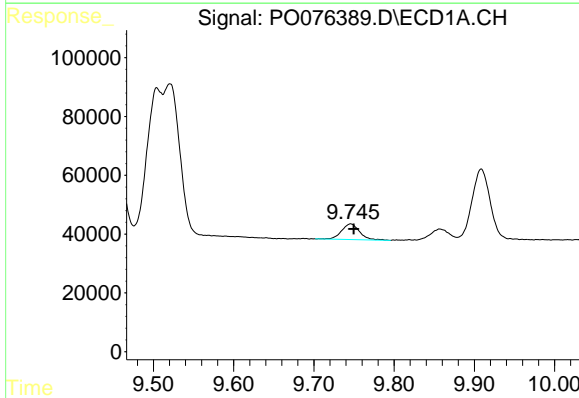
R.T.: 9.521 min  
 Delta R.T.: -0.005 min  
 Response: 728277  
 Conc: 137.28 ng/ml

Instrument :  
 ECD\_O  
 ClientSampled :



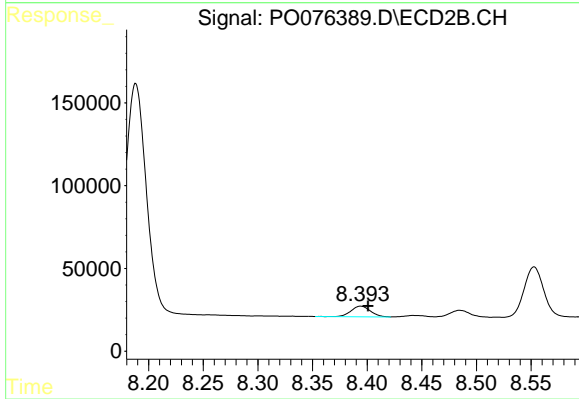
#42 AR-1268-2

R.T.: 8.188 min  
 Delta R.T.: -0.006 min  
 Response: 1974646  
 Conc: 370.74 ng/ml



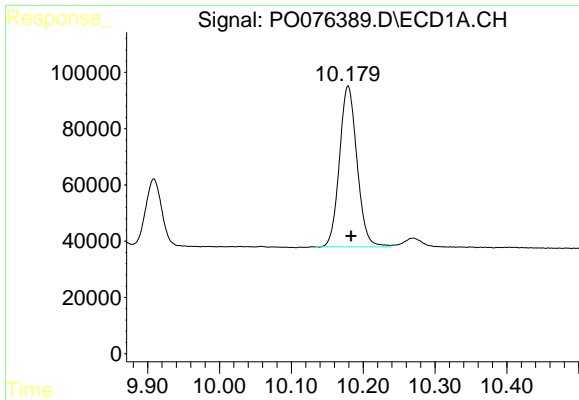
#43 AR-1268-3

R.T.: 9.746 min  
 Delta R.T.: -0.004 min  
 Response: 83386  
 Conc: 17.99 ng/ml



#43 AR-1268-3

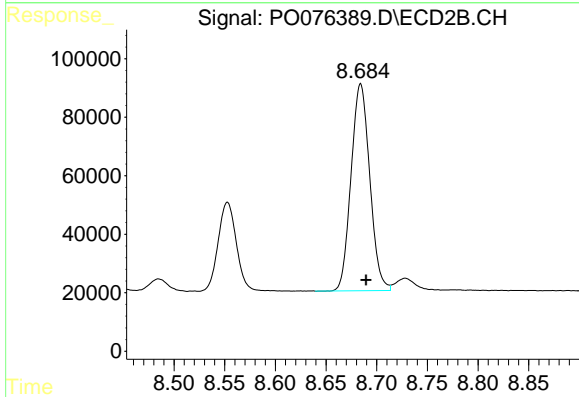
R.T.: 8.394 min  
 Delta R.T.: -0.006 min  
 Response: 78054  
 Conc: 16.46 ng/ml



#44 AR-1268-4

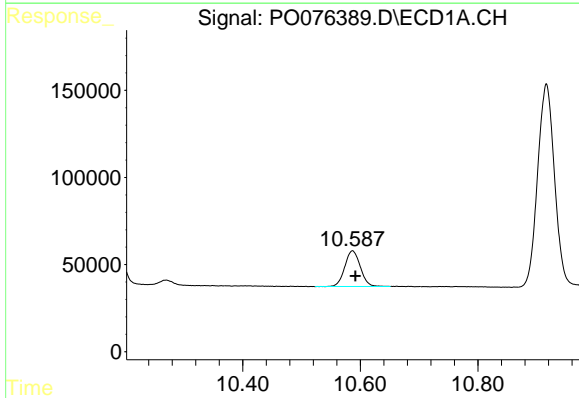
R.T.: 10.179 min  
 Delta R.T.: -0.004 min  
 Response: 971051  
 Conc: 557.18 ng/ml

Instrument :  
 ECD\_O  
 ClientSampled :



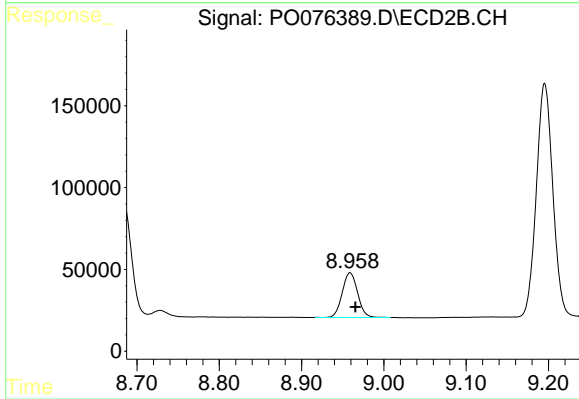
#44 AR-1268-4

R.T.: 8.684 min  
 Delta R.T.: -0.005 min  
 Response: 908604  
 Conc: 488.93 ng/ml



#45 AR-1268-5

R.T.: 10.587 min  
 Delta R.T.: -0.005 min  
 Response: 377290  
 Conc: 27.40 ng/ml



#45 AR-1268-5

R.T.: 8.959 min  
 Delta R.T.: -0.006 min  
 Response: 354030  
 Conc: 26.53 ng/ml