

Data Path : Z:\pestpcbsrv\HPCHEM1\ECD\_0\Data\P0031925\  
 Data File : P0109978.D  
 Signal(s) : Signal #1: ECD1A.ch Signal #2: ECD2B.ch  
 Acq On : 18 Mar 2025 15:53  
 Operator : YP/AJ  
 Sample : AR1232ICC500  
 Misc :  
 ALS Vial : 9 Sample Multiplier: 1

**Instrument :**  
 ECD\_0  
**ClientSampleId :**  
 AR1232ICC500

Integration File signal 1: autoint1.e  
 Integration File signal 2: autoint2.e  
 Quant Time: Mar 18 16:25:04 2025  
 Quant Method : Z:\pestpcbsrv\HPCHEM1\ECD\_0\methods\P0031925.M  
 Quant Title : GC EXTRACTABLES  
 QLast Update : Tue Mar 18 16:24:54 2025  
 Response via : Initial Calibration  
 Integrator: ChemStation

Volume Inj. : 2 µl  
 Signal #1 Phase : ZB-MR1 Signal #2 Phase: ZB-MR2  
 Signal #1 Info : 30Mx0.32mmx 0.50µ Signal #2 Info : 30M x 0.32mm x 0.25µm

Compound	RT#1	RT#2	Resp#1	Resp#2	ng/ml	ng/ml
-----						
System Monitoring Compounds						
1) SA Tetrachlo...	3.692	3.689	438.9E6	262.6E6	50.000	50.000
2) SA Decachlor...	8.744	8.696	372.1E6	116.2E6	50.000	50.000
Target Compounds						
11) L3 AR-1232-1	4.068	4.062	107.9E6	62046675	500.000	500.000
12) L3 AR-1232-2	4.563	4.791	57393041	60174277	500.000	500.000
13) L3 AR-1232-3	4.805	4.966	105.9E6	31828000	500.000	500.000
14) L3 AR-1232-4	4.981	5.051	56780516	29670451	500.000	500.000
15) L3 AR-1232-5	5.024	5.221	40226994	31608944	500.000	500.000
-----						

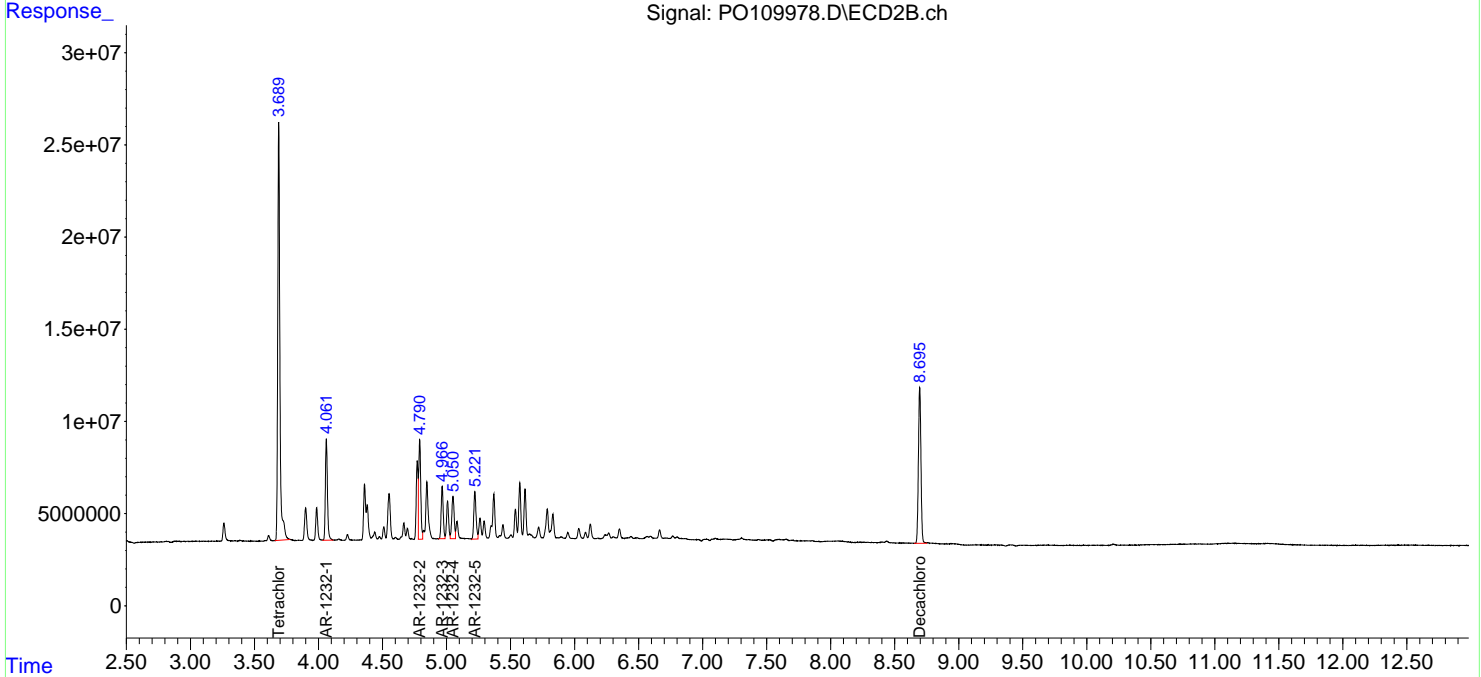
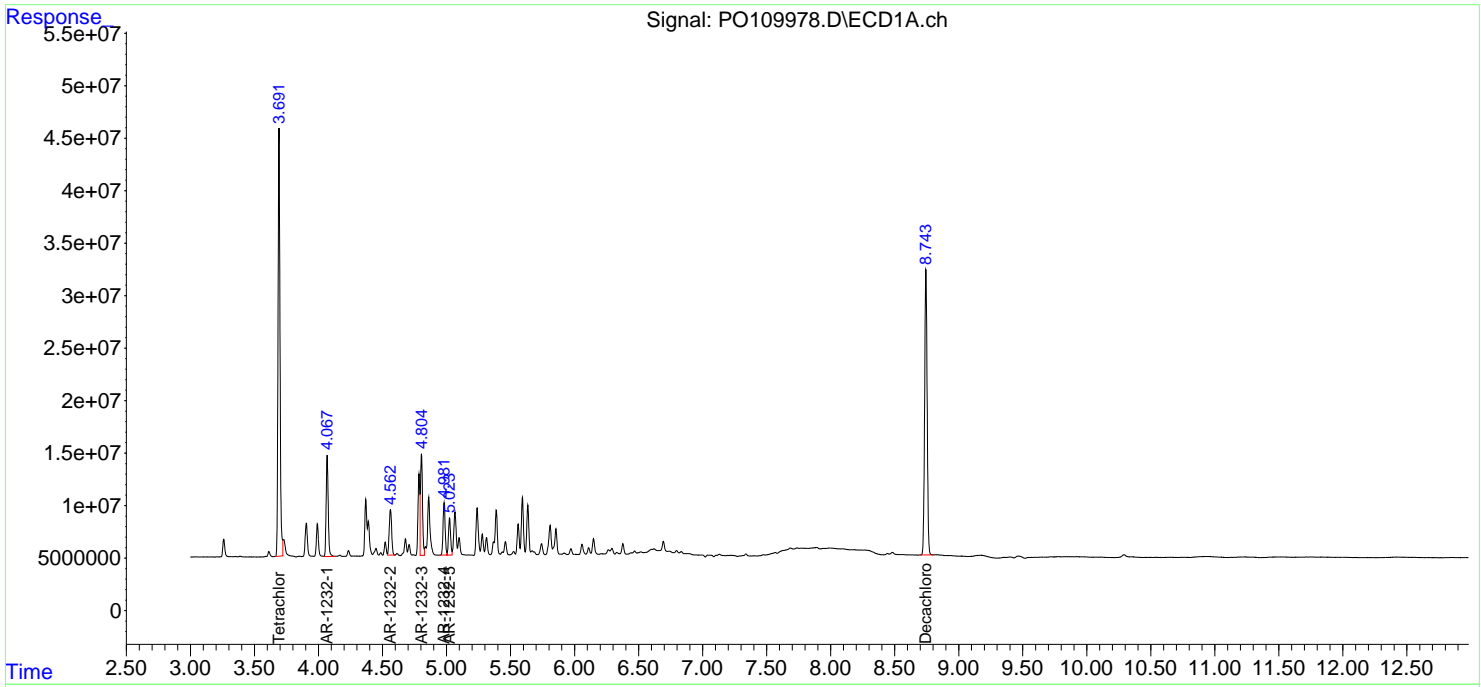
(f)=RT Delta > 1/2 Window (#)=Amounts differ by > 25% (m)=manual int.

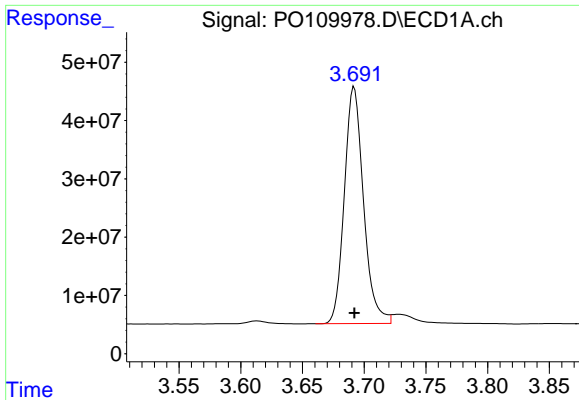
Data Path : Z:\pestpcbsrv\HPCHEM1\ECD\_O\Data\P0031925\  
 Data File : P0109978.D  
 Signal(s) : Signal #1: ECD1A.ch Signal #2: ECD2B.ch  
 Acq On : 18 Mar 2025 15:53  
 Operator : YP/AJ  
 Sample : AR1232ICC500  
 Misc :  
 ALS Vial : 9 Sample Multiplier: 1

Instrument :  
 ECD\_O  
 ClientSampleId :  
 AR1232ICC500

Integration File signal 1: autoint1.e  
 Integration File signal 2: autoint2.e  
 Quant Time: Mar 18 16:25:04 2025  
 Quant Method : Z:\pestpcbsrv\HPCHEM1\ECD\_O\methods\P0031925.M  
 Quant Title : GC EXTRACTABLES  
 QLast Update : Tue Mar 18 16:24:54 2025  
 Response via : Initial Calibration  
 Integrator: ChemStation

Volume Inj. : 2 µl  
 Signal #1 Phase : ZB-MR1 Signal #2 Phase: ZB-MR2  
 Signal #1 Info : 30Mx0.32mmx 0.50µ Signal #2 Info : 30M x 0.32mm x 0.25µm

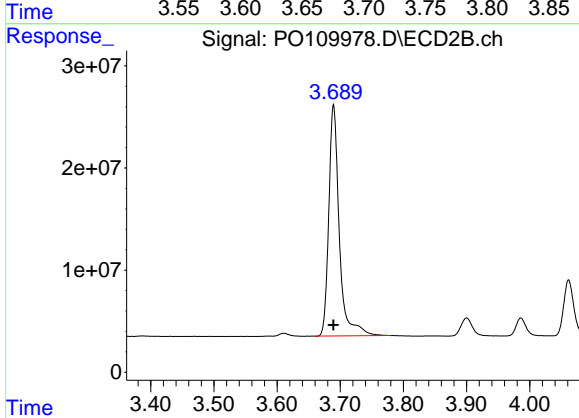




#1 Tetrachloro-m-xylene

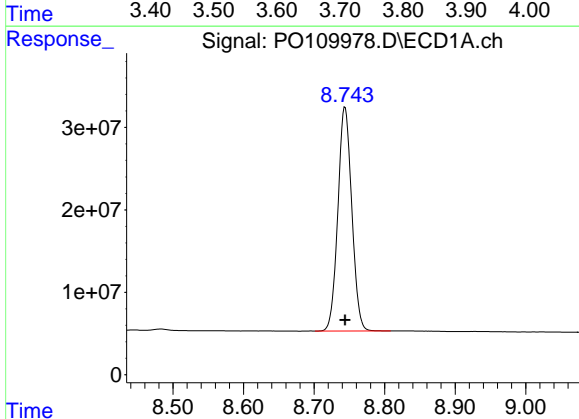
R.T.: 3.692 min  
 Delta R.T.: 0.000 min  
 Response: 438922587  
 Conc: 50.00 ng/ml

Instrument :  
 ECD\_O  
 ClientSampleId :  
 AR1232ICC500



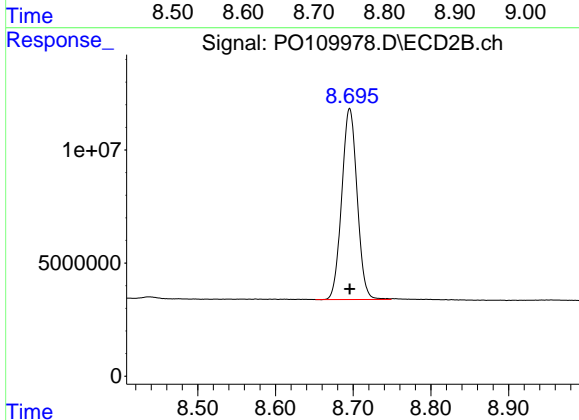
#1 Tetrachloro-m-xylene

R.T.: 3.689 min  
 Delta R.T.: 0.000 min  
 Response: 262556927  
 Conc: 50.00 ng/ml



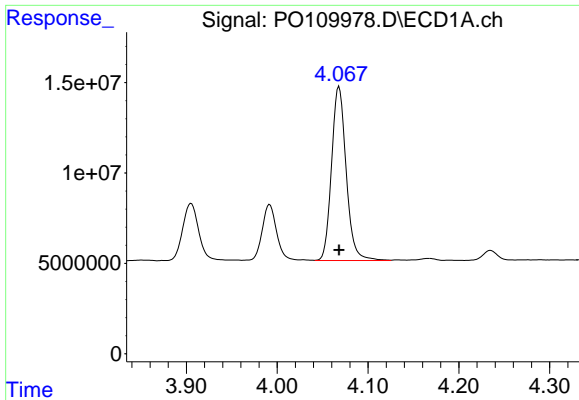
#2 Decachlorobiphenyl

R.T.: 8.744 min  
 Delta R.T.: 0.000 min  
 Response: 372070287  
 Conc: 50.00 ng/ml



#2 Decachlorobiphenyl

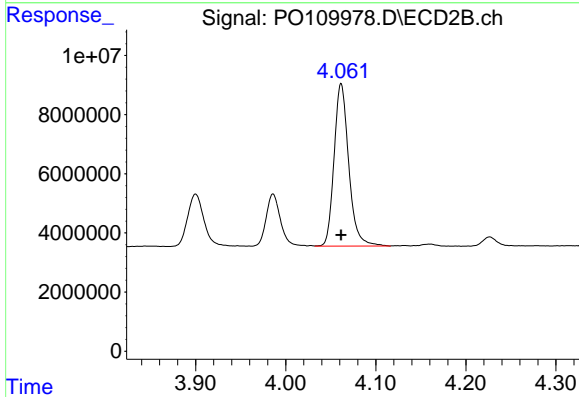
R.T.: 8.696 min  
 Delta R.T.: 0.000 min  
 Response: 116151811  
 Conc: 50.00 ng/ml



#11 AR-1232-1

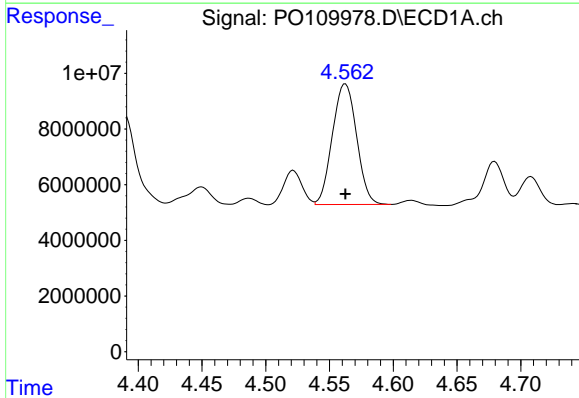
R.T.: 4.068 min  
 Delta R.T.: 0.000 min  
 Response: 107872261  
 Conc: 500.00 ng/ml

Instrument :  
 ECD\_O  
 ClientSampleId :  
 AR1232ICC500



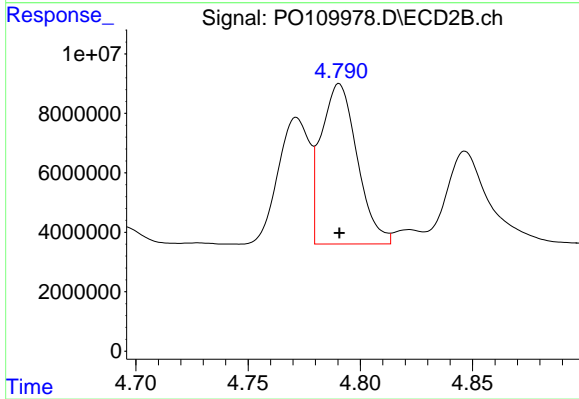
#11 AR-1232-1

R.T.: 4.062 min  
 Delta R.T.: 0.000 min  
 Response: 62046675  
 Conc: 500.00 ng/ml



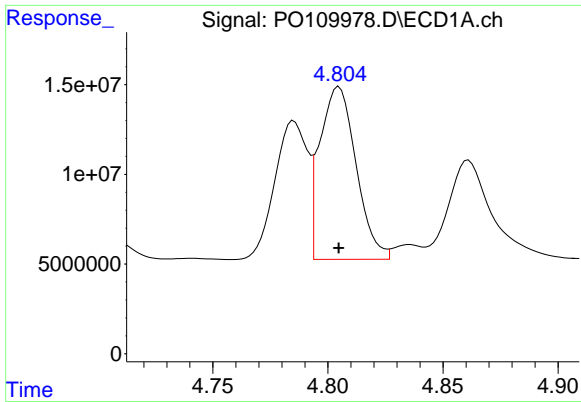
#12 AR-1232-2

R.T.: 4.563 min  
 Delta R.T.: 0.000 min  
 Response: 57393041  
 Conc: 500.00 ng/ml



#12 AR-1232-2

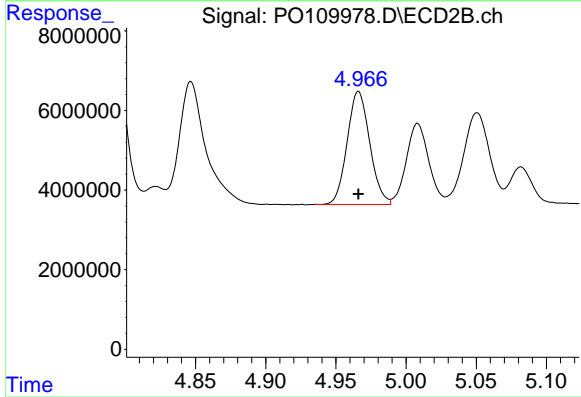
R.T.: 4.791 min  
 Delta R.T.: 0.000 min  
 Response: 60174277  
 Conc: 500.00 ng/ml



#13 AR-1232-3

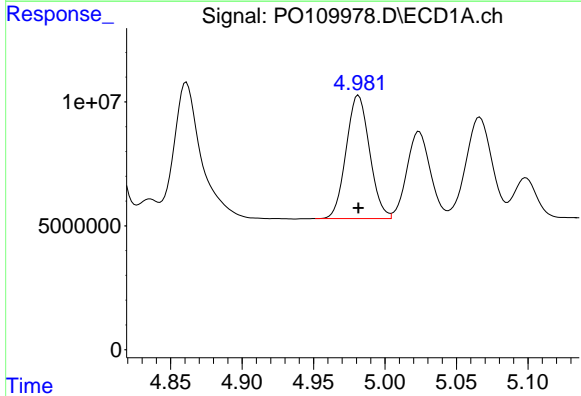
R.T.: 4.805 min  
 Delta R.T.: 0.000 min  
 Response: 105889863  
 Conc: 500.00 ng/ml

Instrument :  
 ECD\_O  
 ClientSampleId :  
 AR1232ICC500



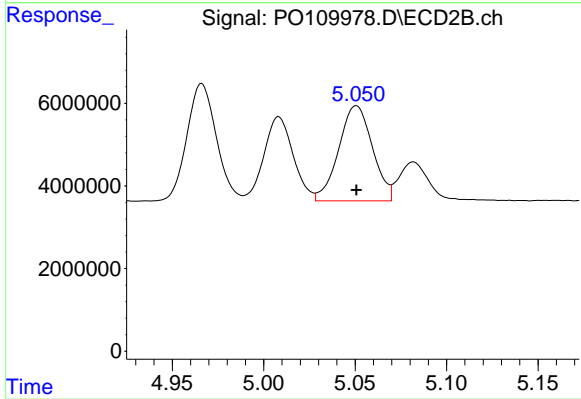
#13 AR-1232-3

R.T.: 4.966 min  
 Delta R.T.: 0.000 min  
 Response: 31828000  
 Conc: 500.00 ng/ml



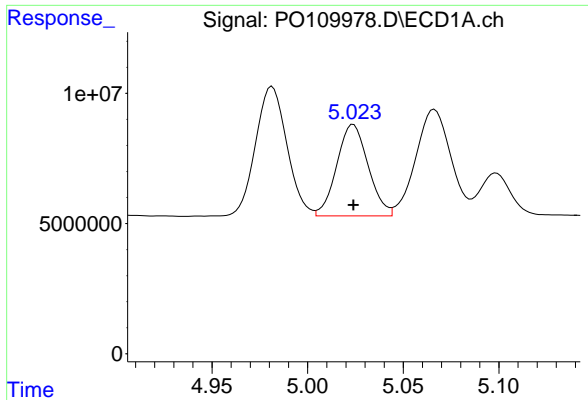
#14 AR-1232-4

R.T.: 4.981 min  
 Delta R.T.: 0.000 min  
 Response: 56780516  
 Conc: 500.00 ng/ml



#14 AR-1232-4

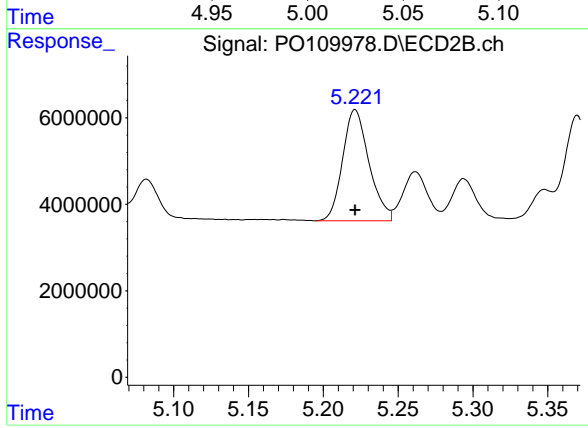
R.T.: 5.051 min  
 Delta R.T.: 0.000 min  
 Response: 29670451  
 Conc: 500.00 ng/ml



#15 AR-1232-5

R.T.: 5.024 min  
 Delta R.T.: 0.000 min  
 Response: 40226994  
 Conc: 500.00 ng/ml

Instrument :  
 ECD\_O  
 ClientSampleId :  
 AR1232ICC500



#15 AR-1232-5

R.T.: 5.221 min  
 Delta R.T.: 0.000 min  
 Response: 31608944  
 Conc: 500.00 ng/ml