

Data Path : Z:\pestpcbsrv\HPCHEM1\ECD_0\Data\P0032124\
 Data File : P0102671.D
 Signal(s) : Signal #1: ECD1A.ch Signal #2: ECD2B.ch
 Acq On : 21 Mar 2024 12:17
 Operator : YP/AJ
 Sample : P1798-07DL 200X
 Misc :
 ALS Vial : 15 Sample Multiplier: 1

Instrument :
 ECD_0
ClientSampleId :
 S-7DL

Manual Integrations
APPROVED
 Reviewed By :Yogesh Patel 03/22/2024
 Supervised By :Ankita Jodhani 03/22/2024

Integration File signal 1: autoint1.e
 Integration File signal 2: autoint2.e
 Quant Time: Mar 22 01:35:57 2024
 Quant Method : Z:\pestpcbsrv\HPCHEM1\ECD_0\methods\P0031824.M
 Quant Title : GC EXTRACTABLES
 QLast Update : Tue Mar 19 08:56:28 2024
 Response via : Initial Calibration
 Integrator: ChemStation

Volume Inj. : 2 µl
 Signal #1 Phase : ZB-MR1 Signal #2 Phase: ZB-MR2
 Signal #1 Info : 30Mx0.32mmx 0.50µ Signal #2 Info : 30M x 0.32mm x 0.25µm

Compound	RT#1	RT#2	Resp#1	Resp#2	ng/ml	ng/ml
----------	------	------	--------	--------	-------	-------

System Monitoring Compounds

Target Compounds

16)	L4	AR-1242-1	5.405	4.429	77595956	47664467	861.277m	816.646m
17)	L4	AR-1242-2	5.427	4.447	107.0E6	67782657	810.460m	831.292m
18)	L4	AR-1242-3	5.488	4.618	68303096	32400204	805.556m	719.225
19)	L4	AR-1242-4	5.585	4.700	48976305	24592121	730.044m	474.472 #
20)	L4	AR-1242-5	6.311	5.211	16402886	16252749	261.980	290.265

(f)=RT Delta > 1/2 Window (#)=Amounts differ by > 25% (m)=manual int.

Data Path : Z:\pestpcbsrv\HPCHEM1\ECD_O\Data\P0032124\
 Data File : P0102671.D
 Signal(s) : Signal #1: ECD1A.ch Signal #2: ECD2B.ch
 Acq On : 21 Mar 2024 12:17
 Operator : YP/AJ
 Sample : P1798-07DL 200X
 Misc :
 ALS Vial : 15 Sample Multiplier: 1

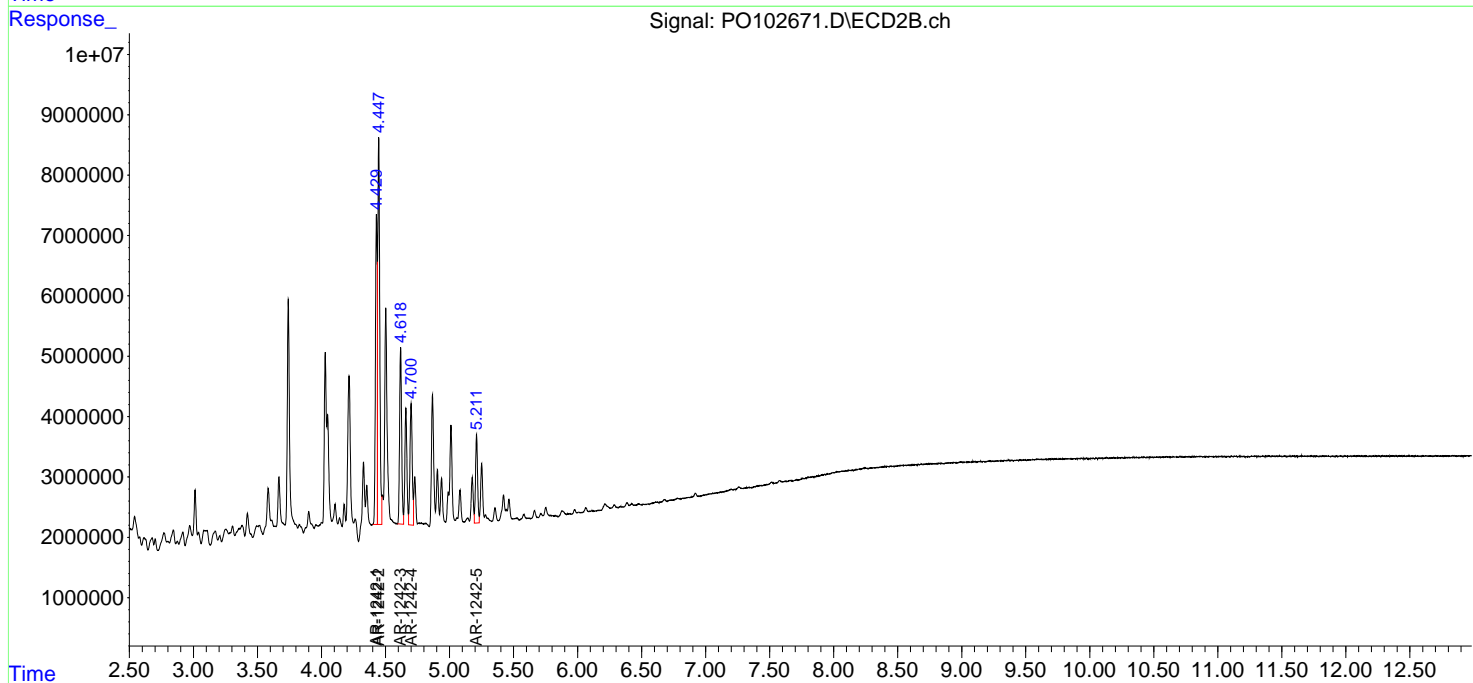
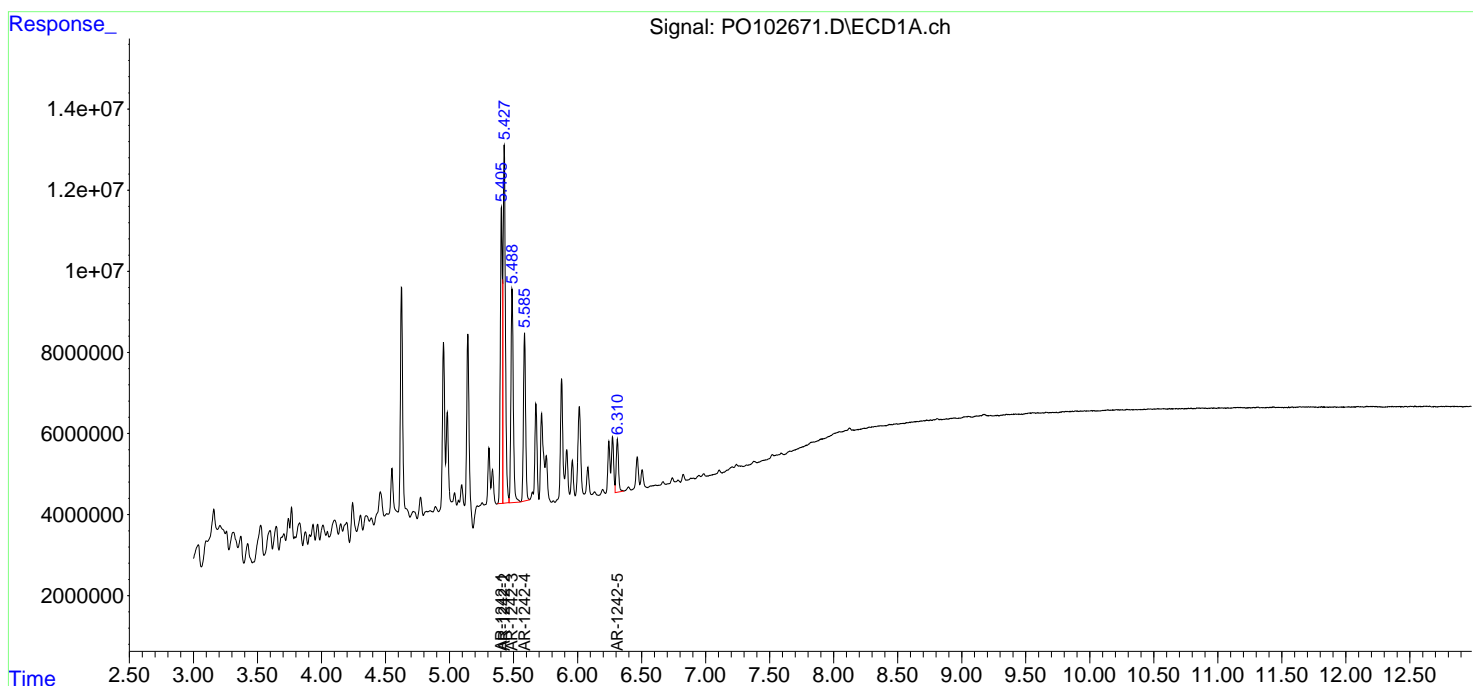
Instrument :
 ECD_O
ClientSampleId :
 S-7DL

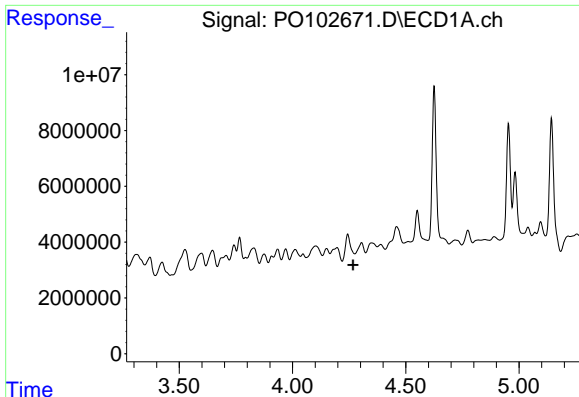
Manual Integrations
APPROVED

Reviewed By :Yogesh Patel 03/22/2024
 Supervised By :Ankita Jodhani 03/22/2024

Integration File signal 1: autoint1.e
 Integration File signal 2: autoint2.e
 Quant Time: Mar 22 01:35:57 2024
 Quant Method : Z:\pestpcbsrv\HPCHEM1\ECD_O\methods\P0031824.M
 Quant Title : GC EXTRACTABLES
 QLast Update : Tue Mar 19 08:56:28 2024
 Response via : Initial Calibration
 Integrator: ChemStation

Volume Inj. : 2 µl
 Signal #1 Phase : ZB-MR1 Signal #2 Phase: ZB-MR2
 Signal #1 Info : 30Mx0.32mmx 0.50µ Signal #2 Info : 30M x 0.32mm x 0.25µm





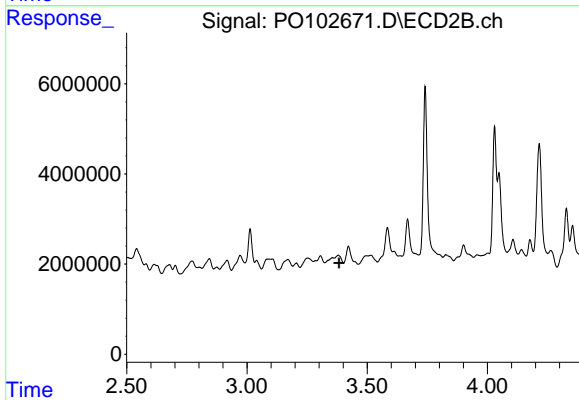
#1 Tetrachloro-m-xylene

R.T.: 0.000 min
 Exp R.T. : 4.267 min
 Response: 0
 Conc: N.D.

Instrument :
 ECD_O
 ClientSampleId :
 S-7DL

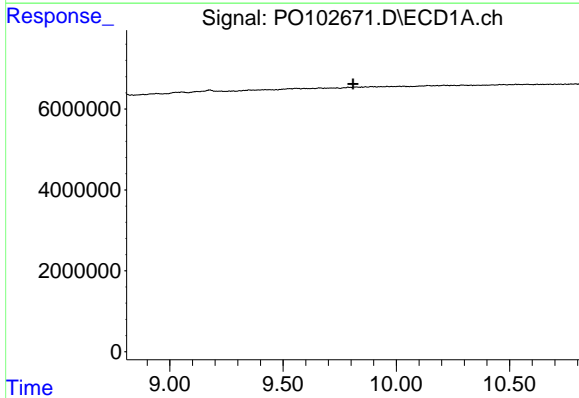
Manual Integrations
 APPROVED

Reviewed By :Yogesh Patel 03/22/2024
 Supervised By :Ankita Jodhani 03/22/2024



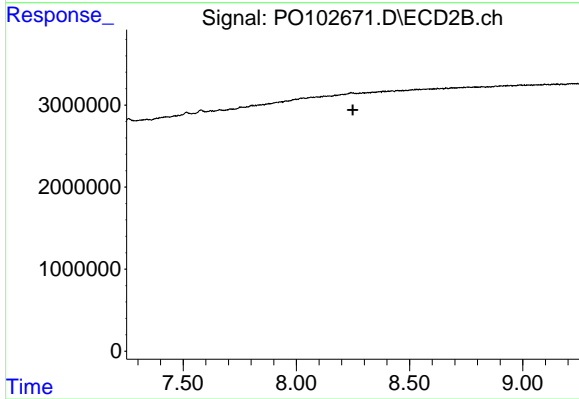
#1 Tetrachloro-m-xylene

R.T.: 0.000 min
 Exp R.T. : 3.382 min
 Response: 0
 Conc: N.D.



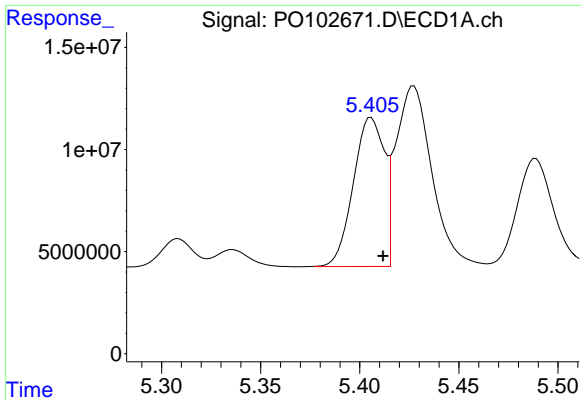
#2 Decachlorobiphenyl

R.T.: 0.000 min
 Exp R.T. : 9.809 min
 Response: 0
 Conc: N.D.



#2 Decachlorobiphenyl

R.T.: 0.000 min
 Exp R.T. : 8.249 min
 Response: 0
 Conc: N.D.



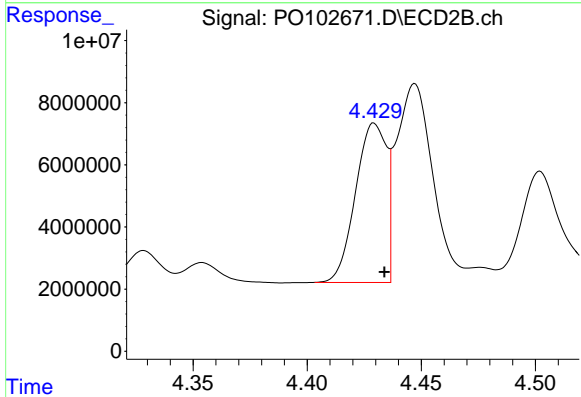
#16 AR-1242-1

R.T.: 5.405 min
 Delta R.T.: -0.007 min
 Response: 77595956
 Conc: 861.28 ng/ml

Instrument :
 ECD_O
 ClientSampleId :
 S-7DL

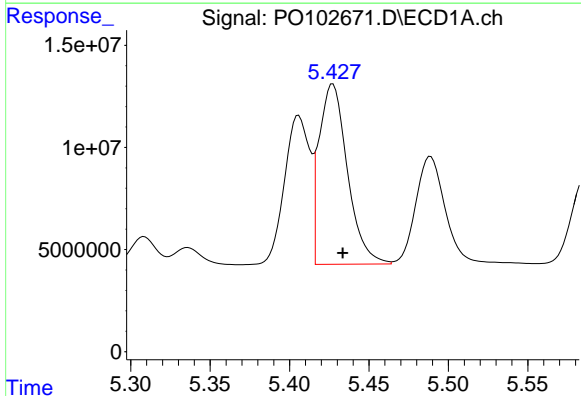
Manual Integrations
 APPROVED

Reviewed By :Yogesh Patel 03/22/2024
 Supervised By :Ankita Jodhani 03/22/2024



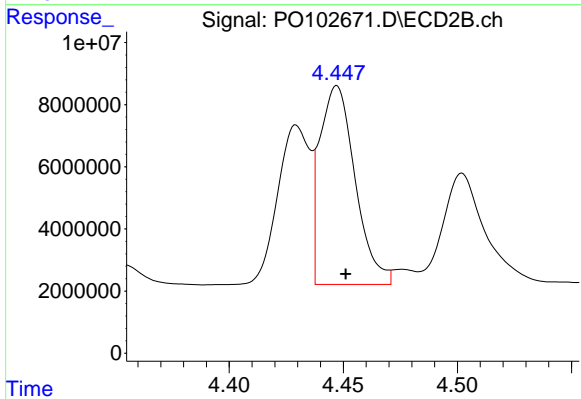
#16 AR-1242-1

R.T.: 4.429 min
 Delta R.T.: -0.005 min
 Response: 47664467
 Conc: 816.65 ng/ml m



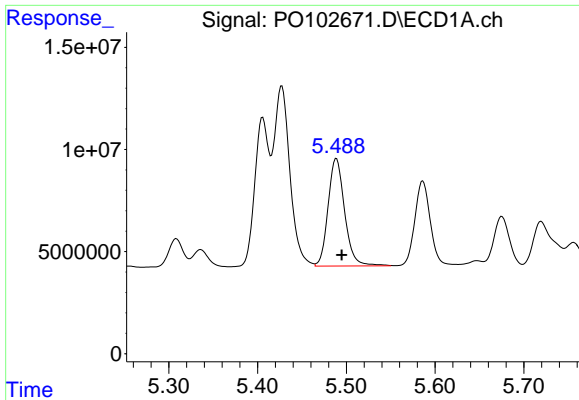
#17 AR-1242-2

R.T.: 5.427 min
 Delta R.T.: -0.007 min
 Response: 106974490
 Conc: 810.46 ng/ml m



#17 AR-1242-2

R.T.: 4.447 min
 Delta R.T.: -0.004 min
 Response: 67782657
 Conc: 831.29 ng/ml m



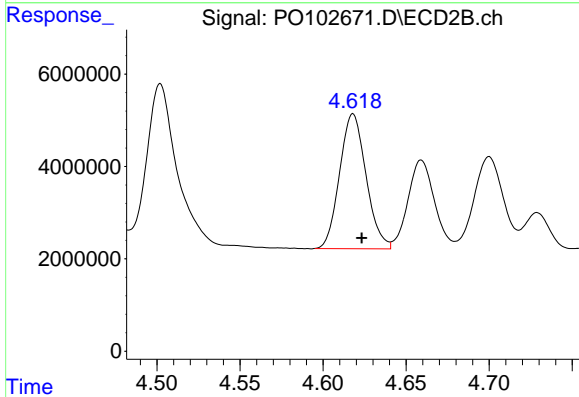
#18 AR-1242-3

R.T.: 5.488 min
 Delta R.T.: -0.007 min
 Response: 68303096
 Conc: 805.56 ng/ml

Instrument :
 ECD_O
 ClientSampleId :
 S-7DL

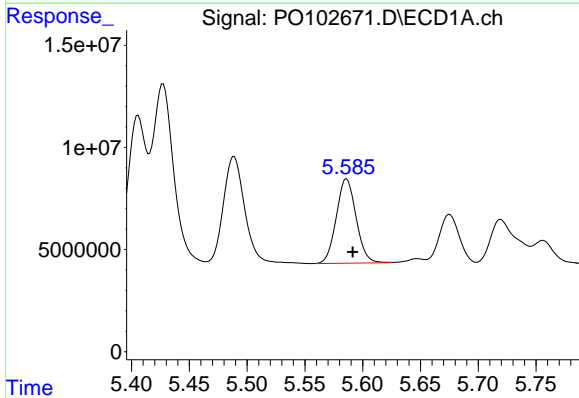
Manual Integrations
 APPROVED

Reviewed By :Yogesh Patel 03/22/2024
 Supervised By :Ankita Jodhani 03/22/2024



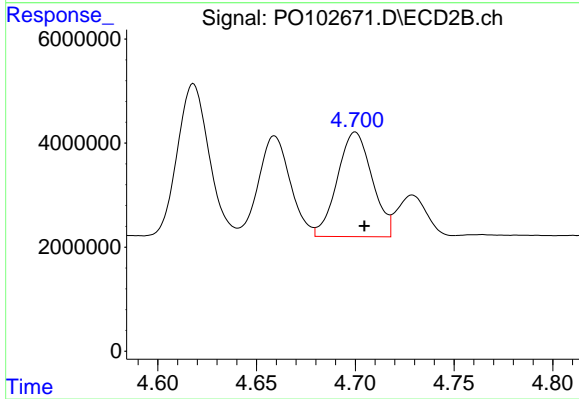
#18 AR-1242-3

R.T.: 4.618 min
 Delta R.T.: -0.005 min
 Response: 32400204
 Conc: 719.22 ng/ml



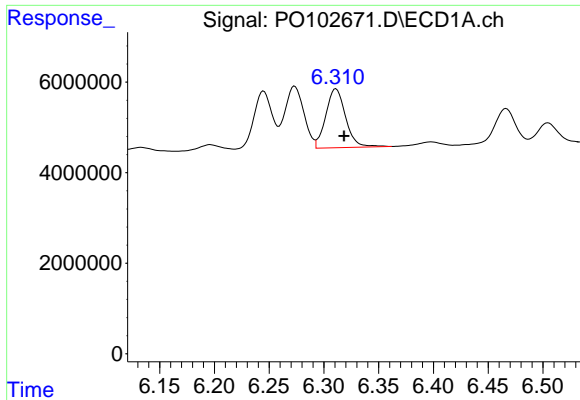
#19 AR-1242-4

R.T.: 5.585 min
 Delta R.T.: -0.006 min
 Response: 48976305
 Conc: 730.04 ng/ml m



#19 AR-1242-4

R.T.: 4.700 min
 Delta R.T.: -0.004 min
 Response: 24592121
 Conc: 474.47 ng/ml



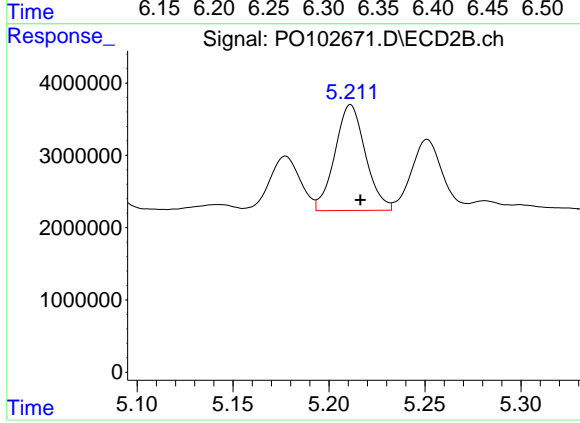
#20 AR-1242-5

R.T.: 6.311 min
 Delta R.T.: -0.007 min
 Response: 16402886
 Conc: 261.98 ng/ml

Instrument :
 ECD_O
 ClientSampleId :
 S-7DL

Manual Integrations
 APPROVED

Reviewed By :Yogesh Patel 03/22/2024
 Supervised By :Ankita Jodhani 03/22/2024



#20 AR-1242-5

R.T.: 5.211 min
 Delta R.T.: -0.005 min
 Response: 16252749
 Conc: 290.26 ng/ml