

Data Path : Z:\pestpcbsrv\HPCHEM1\ECD_0\Data\P0032221\
 Data File : P0076423.D
 Signal(s) : Signal #1: ECD1A.CH Signal #2: ECD2B.CH
 Acq On : 22 Mar 2021 15:29
 Operator : DD\AJ
 Sample : M1458-09
 Misc : AR1262 MDL 25 PPB
 ALS Vial : 20 Sample Multiplier: 1

Instrument :
 ECD_0
 ClientSampleId :
 MDL-WATER-03-QT1-2021

Integration File signal 1: autoint1.e
 Integration File signal 2: autoint2.e
 Quant Time: Mar 22 18:12:52 2021
 Quant Method : Z:\pestpcbsrv\HPCHEM1\ECD_0\methods\P0031521.M
 Quant Title : GC EXTRACTABLES
 QLast Update : Tue Mar 16 07:18:57 2021
 Response via : Initial Calibration
 Integrator: ChemStation 6890 Scale Mode: Small noise peaks clipped

Volume Inj. : 2 µl
 Signal #1 Phase : ZB-MR1 Signal #2 Phase: ZB-MR2
 Signal #1 Info : 30Mx0.32mmx 0.50µ Signal #2 Info : 30M x 0.32mm x 0.25µm

	Compound	RT#1	RT#2	Resp#1	Resp#2	ng/ml	ng/ml

System Monitoring Compounds							
1)	SA Tetrachlo...	4.915	3.927	1180843	809017	20.786	19.391
2)	SA Decachlor...	10.909	9.190	839305	816150	21.821	21.255
Target Compounds							
28)	L6 AR-1254-3	0.000	6.636	0	27395	N.D.	9.095 #
30)	L6 AR-1254-5	8.485	7.283	40942	40289	17.827	15.389
31)	L7 AR-1260-1	7.929	6.754	53778	48767	23.130	23.739
32)	L7 AR-1260-2	8.195	6.953	56679	56449	22.198	23.276
33)	L7 AR-1260-3	8.561	7.106	70814	60238	35.720	26.635 #
34)	L7 AR-1260-4	8.792	7.586	70601	71338	31.251	37.020
35)	L7 AR-1260-5	9.115	7.835	108599	126856	26.568	28.694
36)	L8 AR-1262-1	8.561	7.283	70814	40289	23.934	27.588
37)	L8 AR-1262-2	9.115	7.835	108599	126856	22.433	25.609
38)	L8 AR-1262-3	9.422	8.119	82711	58299	25.027	27.136
39)	L8 AR-1262-4	9.515	8.183	63978	95613	24.888	25.279
40)	L8 AR-1262-5	10.173	8.679	43324	40923	26.337	23.640
41)	L9 AR-1268-1	9.422	8.119	82711	58299	14.199	9.926 #
42)	L9 AR-1268-2	9.515	8.183	63978	95613	12.060	17.951 #
44)	L9 AR-1268-4	10.173	8.679	43324	40923	24.859	22.021

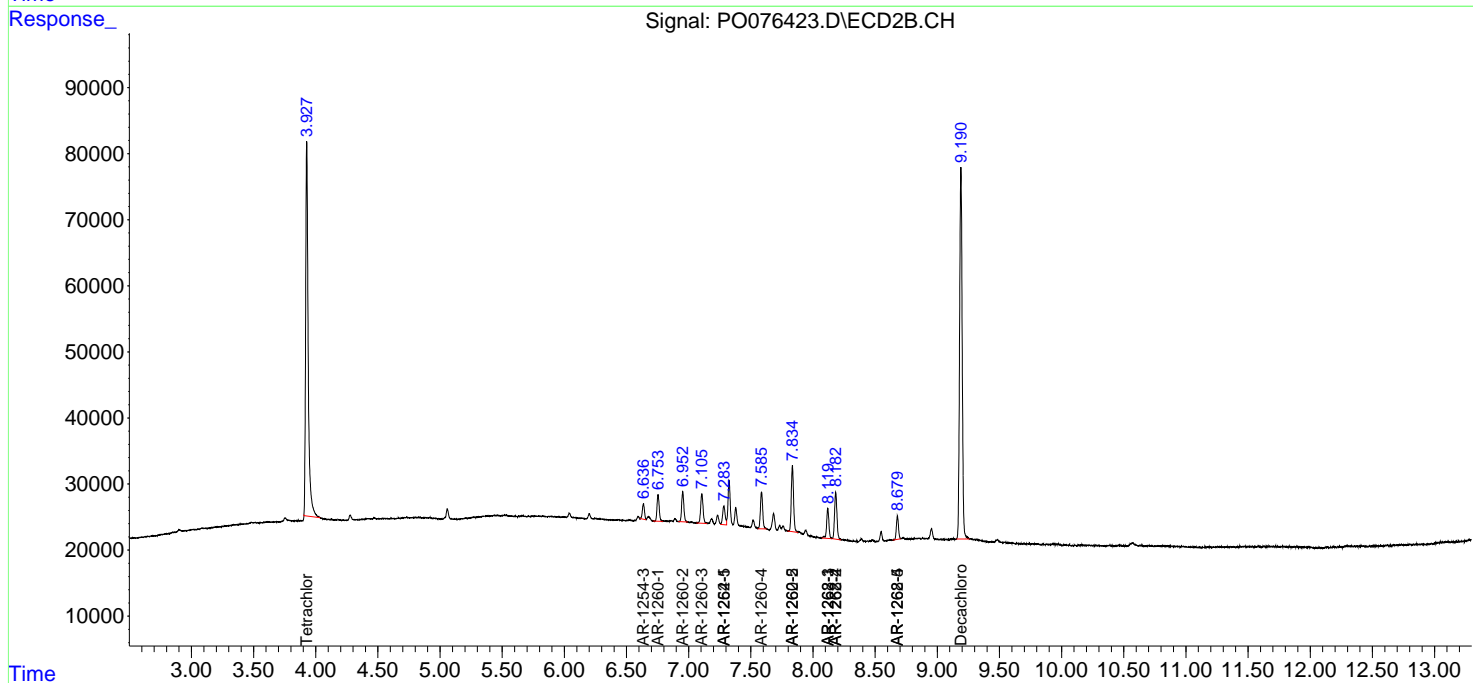
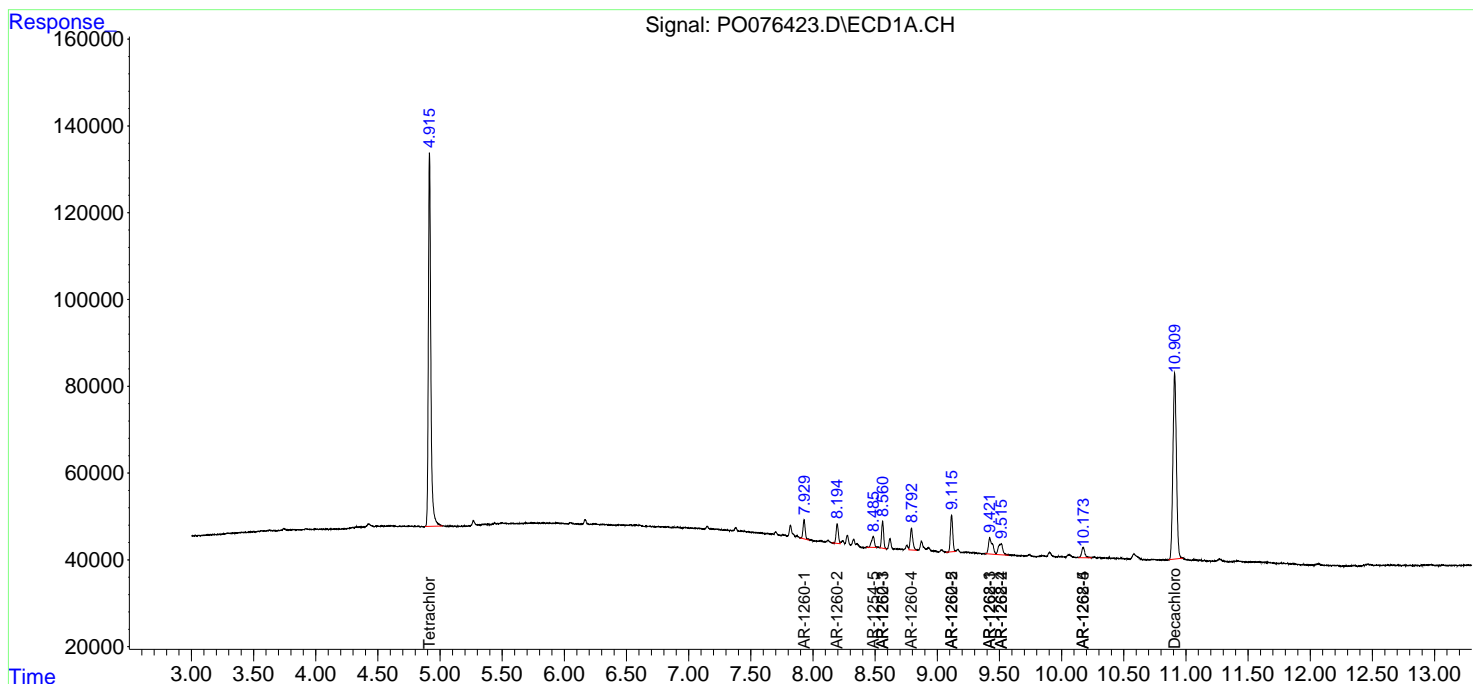
(f)=RT Delta > 1/2 Window (#)=Amounts differ by > 25% (m)=manual int.

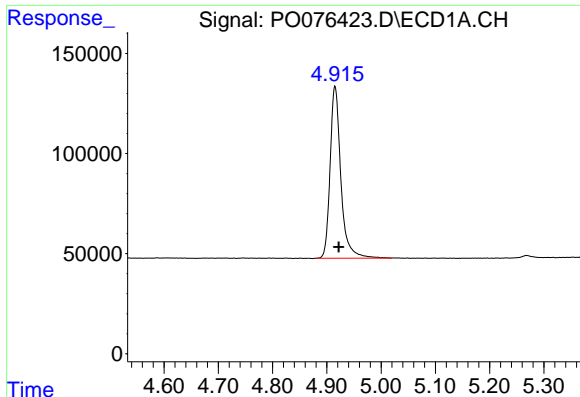
Data Path : Z:\pestpcbsrv\HPCHEM1\ECD_0\Data\P0032221\
 Data File : P0076423.D
 Signal(s) : Signal #1: ECD1A.CH Signal #2: ECD2B.CH
 Acq On : 22 Mar 2021 15:29
 Operator : DD\AJ
 Sample : M1458-09
 Misc : AR1262 MDL 25 PPB
 ALS Vial : 20 Sample Multiplier: 1

Instrument :
 ECD_O
Client Sampled :
 MDL-WATER-03-QT1-2021

Integration File signal 1: autoint1.e
 Integration File signal 2: autoint2.e
 Quant Time: Mar 22 18:12:52 2021
 Quant Method : Z:\pestpcbsrv\HPCHEM1\ECD_0\methods\P0031521.M
 Quant Title : GC EXTRACTABLES
 QLast Update : Tue Mar 16 07:18:57 2021
 Response via : Initial Calibration
 Integrator: ChemStation 6890 Scale Mode: Small noise peaks clipped

Volume Inj. : 2 µl
 Signal #1 Phase : ZB-MR1 Signal #2 Phase: ZB-MR2
 Signal #1 Info : 30Mx0.32mmx 0.50µ Signal #2 Info : 30M x 0.32mm x 0.25µm

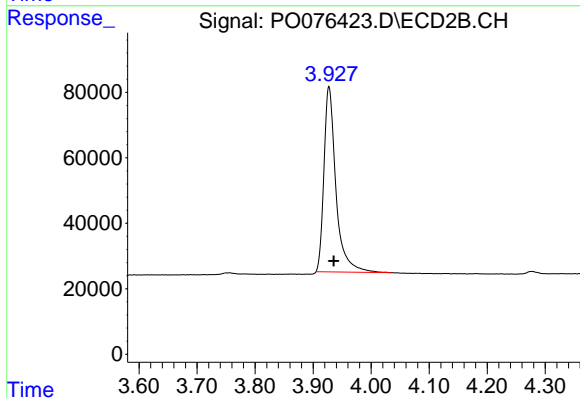




#1 Tetrachloro-m-xylene

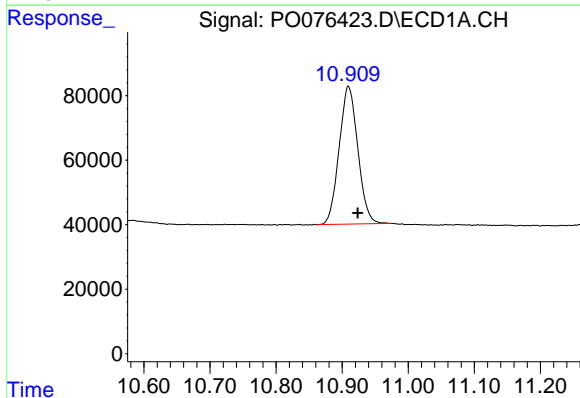
R.T.: 4.915 min
 Delta R.T.: -0.007 min
 Response: 1180843
 Conc: 20.79 ng/ml

Instrument :
 ECD_O
 ClientSampleId :
 MDL-WATER-03-QT1-2021



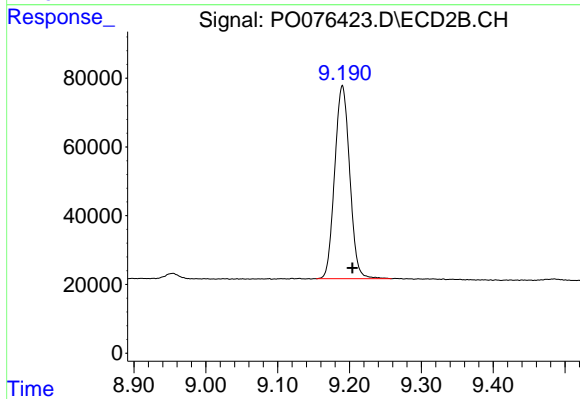
#1 Tetrachloro-m-xylene

R.T.: 3.927 min
 Delta R.T.: -0.008 min
 Response: 809017
 Conc: 19.39 ng/ml



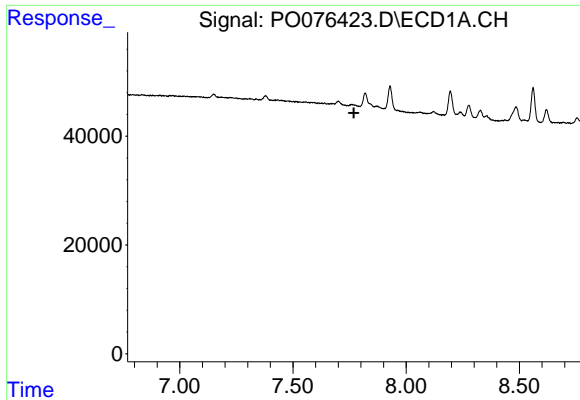
#2 Decachlorobiphenyl

R.T.: 10.909 min
 Delta R.T.: -0.014 min
 Response: 839305
 Conc: 21.82 ng/ml



#2 Decachlorobiphenyl

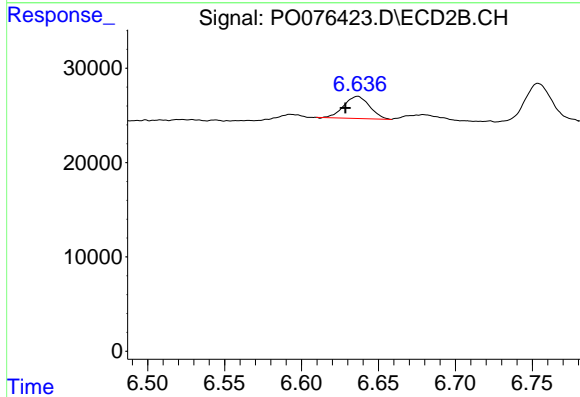
R.T.: 9.190 min
 Delta R.T.: -0.014 min
 Response: 816150
 Conc: 21.26 ng/ml



#28 AR-1254-3

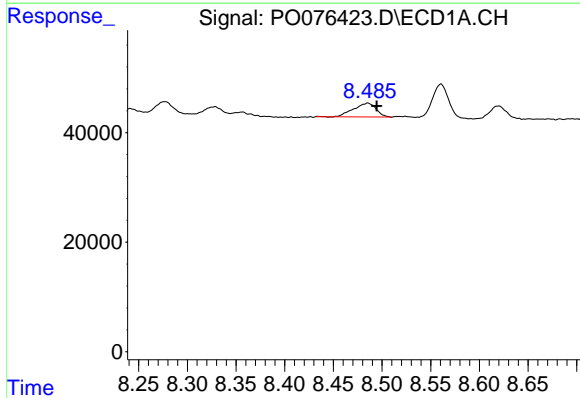
R.T.: 0.000 min
 Exp R.T.: 7.769 min
 Response: 0
 Conc: N.D.

Instrument :
 ECD_O
 ClientSampleId :
 MDL-WATER-03-QT1-2021



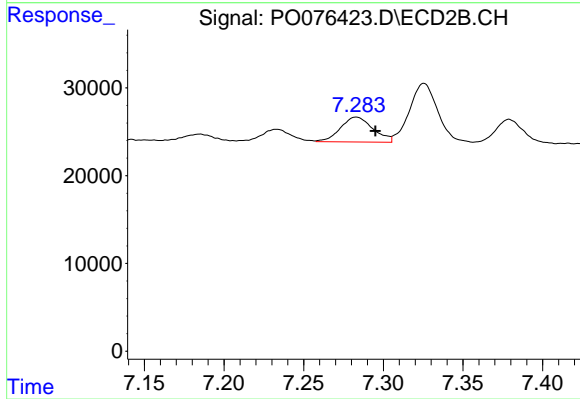
#28 AR-1254-3

R.T.: 6.636 min
 Delta R.T.: 0.008 min
 Response: 27395
 Conc: 9.10 ng/ml



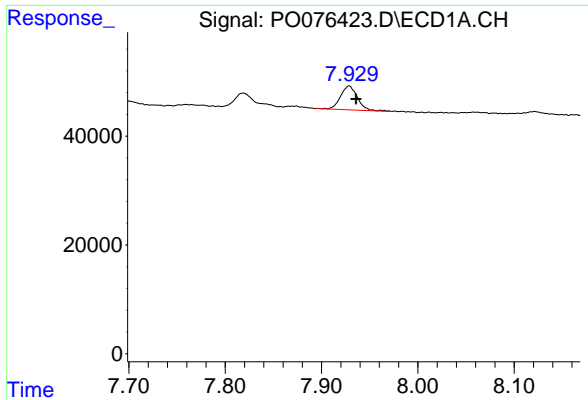
#30 AR-1254-5

R.T.: 8.485 min
 Delta R.T.: -0.009 min
 Response: 40942
 Conc: 17.83 ng/ml



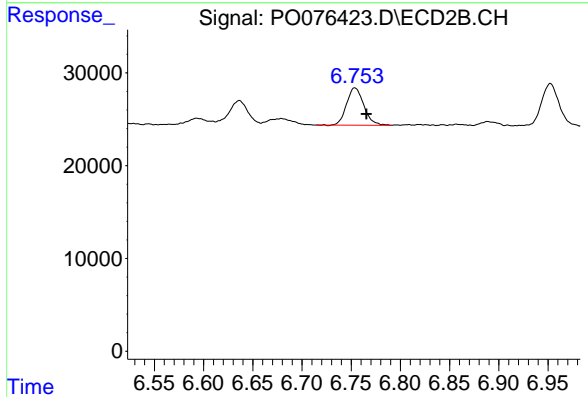
#30 AR-1254-5

R.T.: 7.283 min
 Delta R.T.: -0.012 min
 Response: 40289
 Conc: 15.39 ng/ml

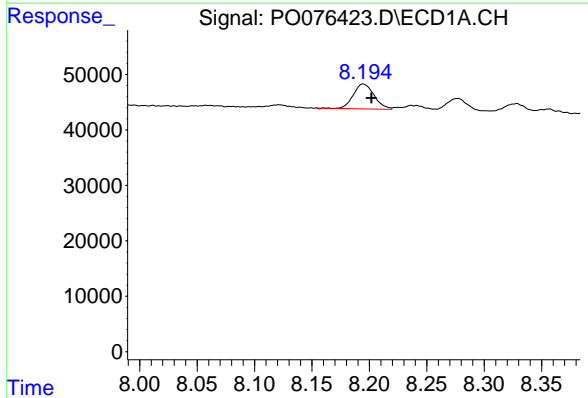


#31 AR-1260-1
 R.T.: 7.929 min
 Delta R.T.: -0.007 min
 Response: 53778
 Conc: 23.13 ng/ml

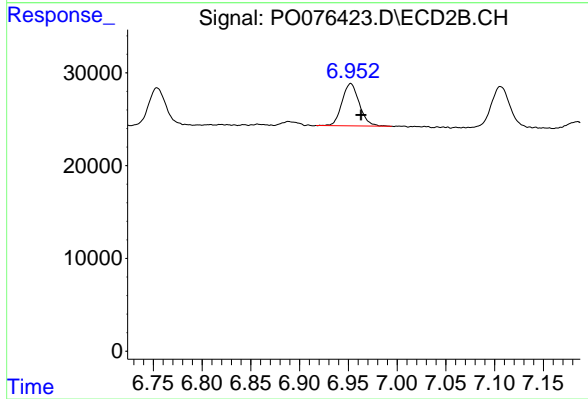
Instrument :
 ECD_O
ClientSampleId :
 MDL-WATER-03-QT1-2021



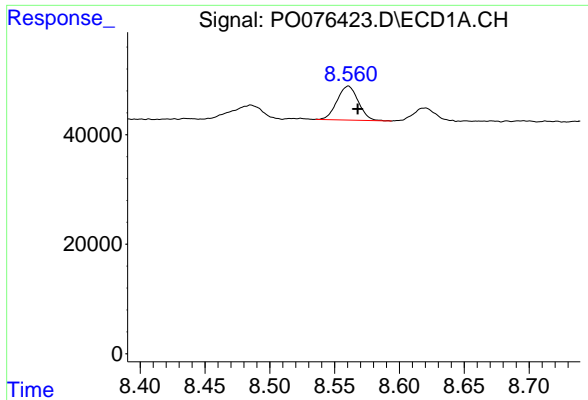
#31 AR-1260-1
 R.T.: 6.754 min
 Delta R.T.: -0.012 min
 Response: 48767
 Conc: 23.74 ng/ml



#32 AR-1260-2
 R.T.: 8.195 min
 Delta R.T.: -0.007 min
 Response: 56679
 Conc: 22.20 ng/ml



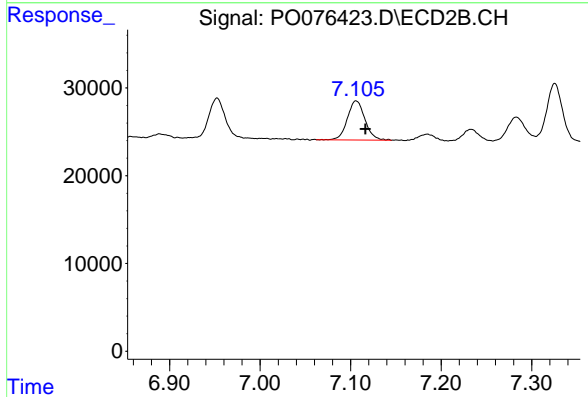
#32 AR-1260-2
 R.T.: 6.953 min
 Delta R.T.: -0.011 min
 Response: 56449
 Conc: 23.28 ng/ml



#33 AR-1260-3

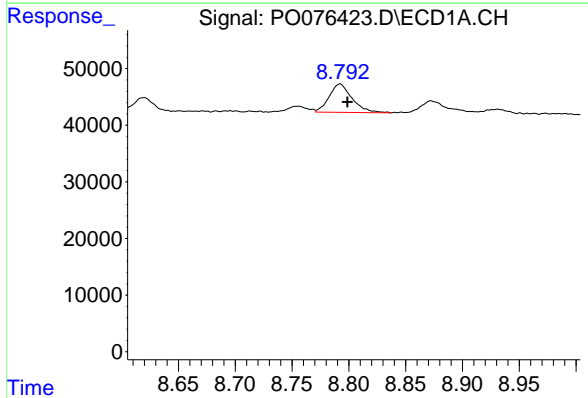
R.T.: 8.561 min
 Delta R.T.: -0.007 min
 Response: 70814
 Conc: 35.72 ng/ml

Instrument :
 ECD_O
 ClientSampleId :
 MDL-WATER-03-QT1-2021



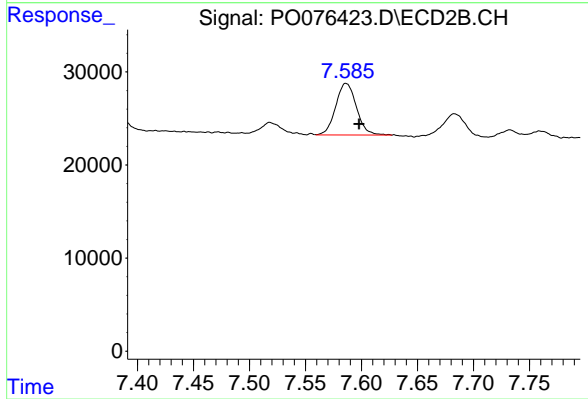
#33 AR-1260-3

R.T.: 7.106 min
 Delta R.T.: -0.010 min
 Response: 60238
 Conc: 26.63 ng/ml



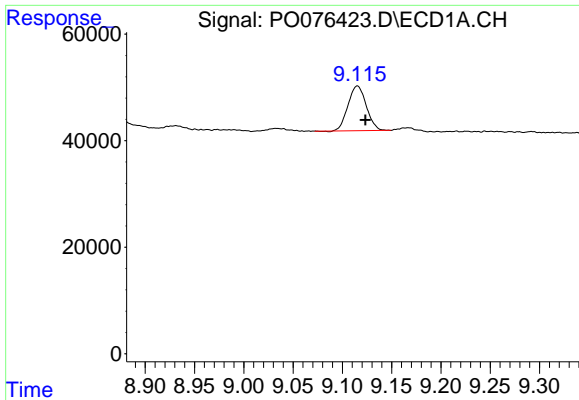
#34 AR-1260-4

R.T.: 8.792 min
 Delta R.T.: -0.006 min
 Response: 70601
 Conc: 31.25 ng/ml



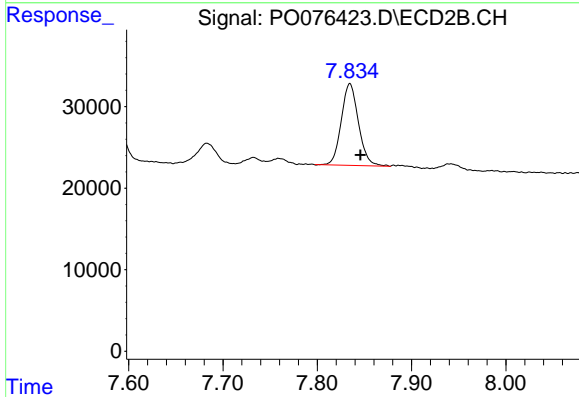
#34 AR-1260-4

R.T.: 7.586 min
 Delta R.T.: -0.012 min
 Response: 71338
 Conc: 37.02 ng/ml

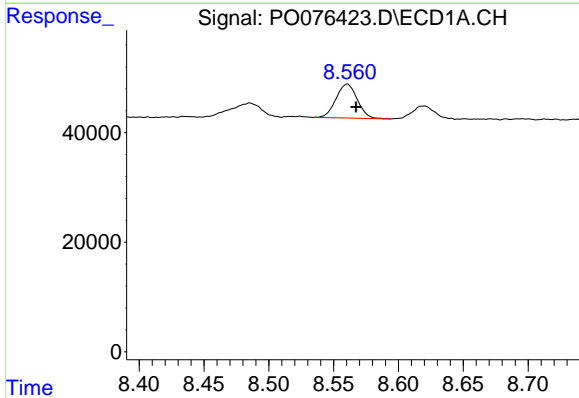


#35 AR-1260-5
 R.T.: 9.115 min
 Delta R.T.: -0.008 min
 Response: 108599
 Conc: 26.57 ng/ml

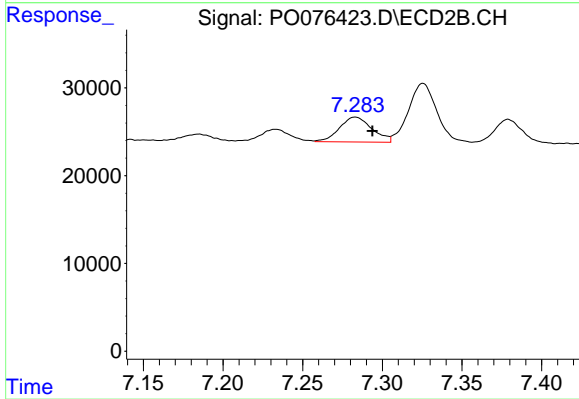
Instrument :
 ECD_O
 ClientSampleId :
 MDL-WATER-03-QT1-2021



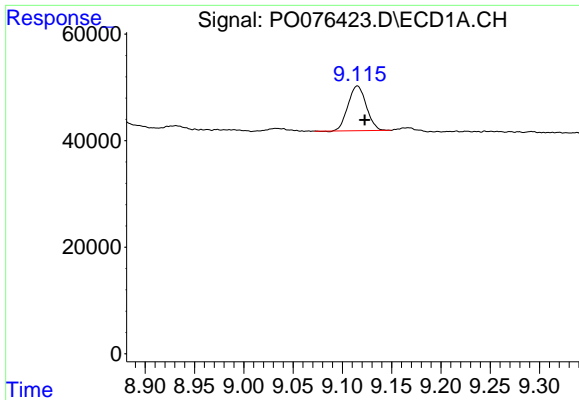
#35 AR-1260-5
 R.T.: 7.835 min
 Delta R.T.: -0.011 min
 Response: 126856
 Conc: 28.69 ng/ml



#36 AR-1262-1
 R.T.: 8.561 min
 Delta R.T.: -0.007 min
 Response: 70814
 Conc: 23.93 ng/ml



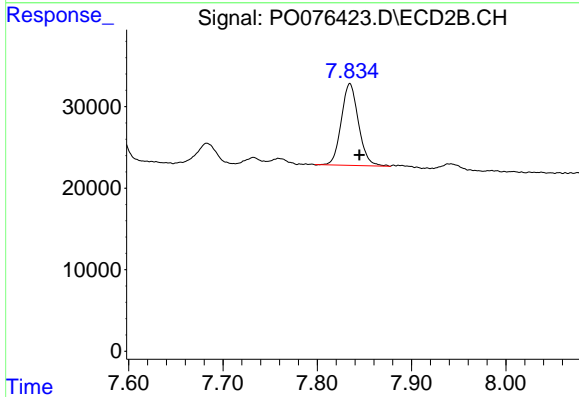
#36 AR-1262-1
 R.T.: 7.283 min
 Delta R.T.: -0.011 min
 Response: 40289
 Conc: 27.59 ng/ml



#37 AR-1262-2

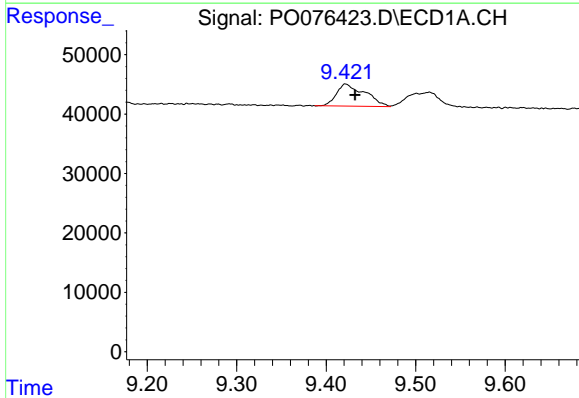
R.T.: 9.115 min
 Delta R.T.: -0.008 min
 Response: 108599
 Conc: 22.43 ng/ml

Instrument :
 ECD_O
ClientSampleId :
 MDL-WATER-03-QT1-2021



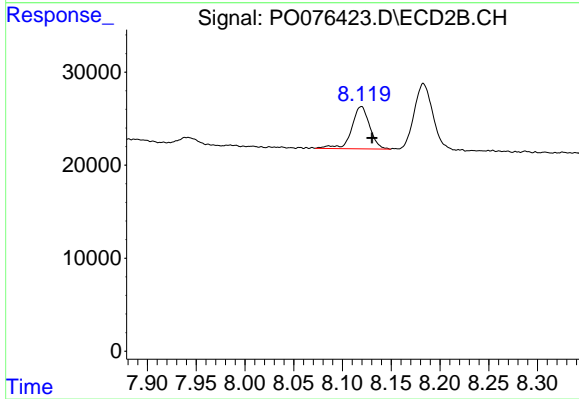
#37 AR-1262-2

R.T.: 7.835 min
 Delta R.T.: -0.010 min
 Response: 126856
 Conc: 25.61 ng/ml



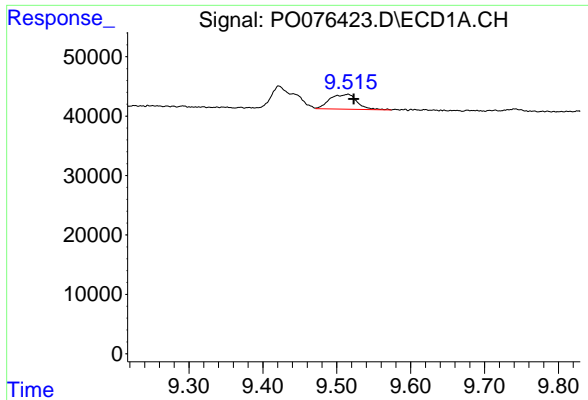
#38 AR-1262-3

R.T.: 9.422 min
 Delta R.T.: -0.010 min
 Response: 82711
 Conc: 25.03 ng/ml



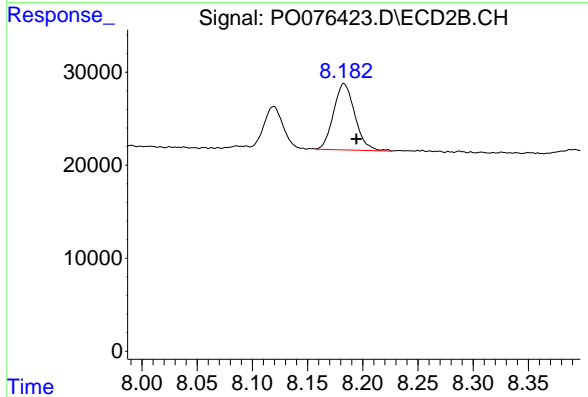
#38 AR-1262-3

R.T.: 8.119 min
 Delta R.T.: -0.011 min
 Response: 58299
 Conc: 27.14 ng/ml

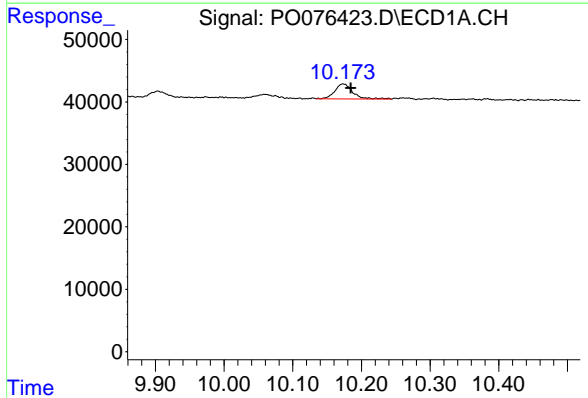


#39 AR-1262-4
 R.T.: 9.515 min
 Delta R.T.: -0.008 min
 Response: 63978
 Conc: 24.89 ng/ml

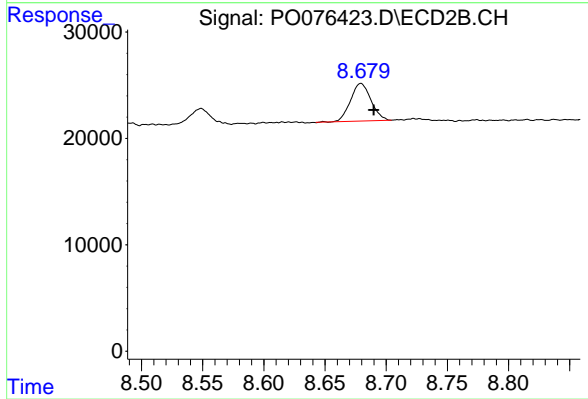
Instrument :
 ECD_O
 ClientSampleId :
 MDL-WATER-03-QT1-2021



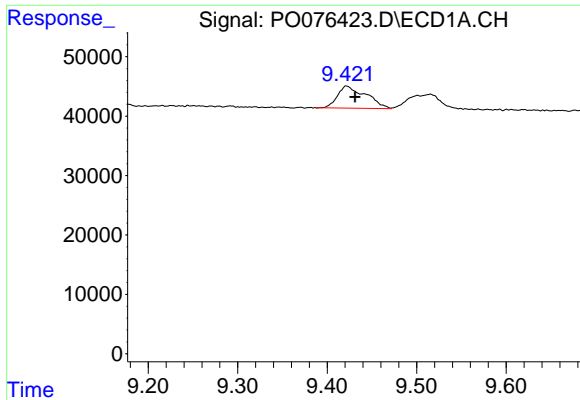
#39 AR-1262-4
 R.T.: 8.183 min
 Delta R.T.: -0.011 min
 Response: 95613
 Conc: 25.28 ng/ml



#40 AR-1262-5
 R.T.: 10.173 min
 Delta R.T.: -0.011 min
 Response: 43324
 Conc: 26.34 ng/ml

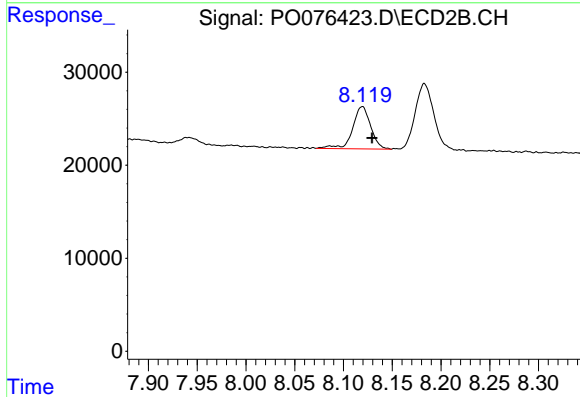


#40 AR-1262-5
 R.T.: 8.679 min
 Delta R.T.: -0.011 min
 Response: 40923
 Conc: 23.64 ng/ml

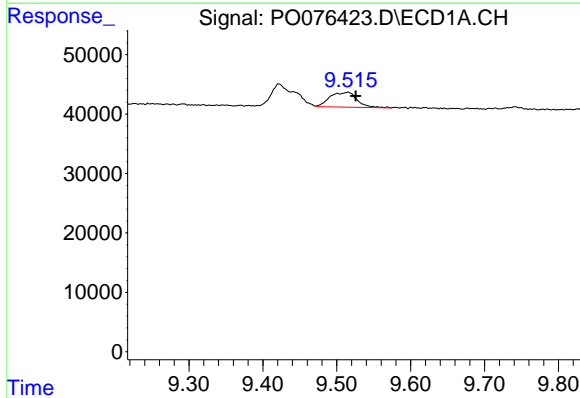


#41 AR-1268-1
 R.T.: 9.422 min
 Delta R.T.: -0.010 min
 Response: 82711
 Conc: 14.20 ng/ml

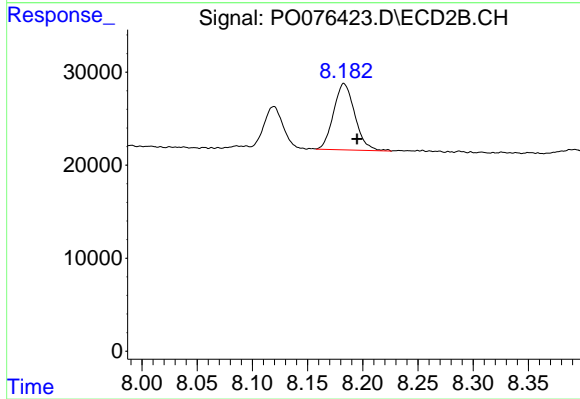
Instrument :
 ECD_O
 ClientSampleId :
 MDL-WATER-03-QT1-2021



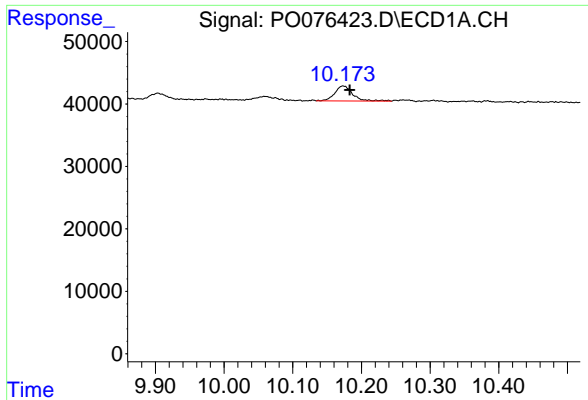
#41 AR-1268-1
 R.T.: 8.119 min
 Delta R.T.: -0.010 min
 Response: 58299
 Conc: 9.93 ng/ml



#42 AR-1268-2
 R.T.: 9.515 min
 Delta R.T.: -0.010 min
 Response: 63978
 Conc: 12.06 ng/ml



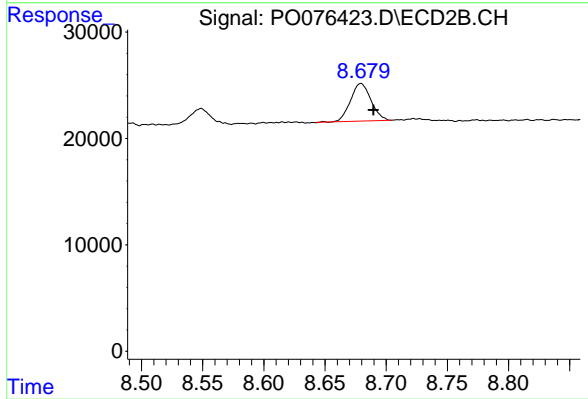
#42 AR-1268-2
 R.T.: 8.183 min
 Delta R.T.: -0.012 min
 Response: 95613
 Conc: 17.95 ng/ml



#44 AR-1268-4

R.T.: 10.173 min
Delta R.T.: -0.010 min
Response: 43324
Conc: 24.86 ng/ml

Instrument :
ECD_O
ClientSampleId :
MDL-WATER-03-QT1-2021



#44 AR-1268-4

R.T.: 8.679 min
Delta R.T.: -0.010 min
Response: 40923
Conc: 22.02 ng/ml