

Data Path : Z:\pestpcbsrv\HPCHEM1\ECD\_O\Data\P0032223\  
 Data File : P0093438.D  
 Signal(s) : Signal #1: ECD1A.ch Signal #2: ECD2B.ch  
 Acq On : 22 Mar 2023 19:25  
 Operator : YP/AJ  
 Sample : PB151616BS  
 Misc :  
 ALS Vial : 22 Sample Multiplier: 1

Instrument :  
 ECD\_O  
 ClientSampleId :

Integration File signal 1: autoint1.e  
 Integration File signal 2: autoint2.e  
 Quant Time: Mar 23 01:04:32 2023  
 Quant Method : Z:\pestpcbsrv\HPCHEM1\ECD\_O\methods\P0031323.M  
 Quant Title : GC EXTRACTABLES  
 QLast Update : Tue Mar 14 05:32:59 2023  
 Response via : Initial Calibration  
 Integrator: ChemStation

Volume Inj. : 2 µl  
 Signal #1 Phase : ZB-MR1 Signal #2 Phase: ZB-MR2  
 Signal #1 Info : 30Mx0.32mmx 0.50µ Signal #2 Info : 30M x 0.32mm x 0.25µm

Compound	RT#1	RT#2	Resp#1	Resp#2	ng/ml	ng/ml
-----						
System Monitoring Compounds						
1) SA Tetrachlo...	4.427	3.633	57661948	19386880	18.414	17.189
2) SA Decachlor...	10.254	8.657	43979598	19004501	20.321	19.409
Target Compounds						
3) L1 AR-1016-1	5.603	4.717	41894717	15513156	438.449	433.380
4) L1 AR-1016-2	5.625	4.735	61394985	22496775	429.961	433.496
5) L1 AR-1016-3	5.687	4.911	39168611	12109136	431.688	437.701
6) L1 AR-1016-4	5.786	4.954	29181968	10959771	430.722	440.792
7) L1 AR-1016-5	6.084	5.167	30270913	13279761	404.301	419.597
8) L2 AR-1221-1	4.632	3.845	5046052	1677849	124.833	114.104
9) L2 AR-1221-2	4.723	3.931	5659790	2183093	186.762	199.904
10) L2 AR-1221-3	4.800	4.007	24032776	9390267	262.878	275.639
11) L3 AR-1232-1	4.800	4.007	24032776	9390267	329.177	332.468
12) L3 AR-1232-2	5.333	4.735	33357995	22496775	927.736	913.008
13) L3 AR-1232-3	5.625	4.911	61394985	12109136	937.831	957.111
14) L3 AR-1232-4	5.786	4.996	29181968	13274605	953.133	1036.460
15) L3 AR-1232-5	5.878	5.167	27916687	13279761	1006.057	946.923
16) L4 AR-1242-1	5.603	4.717	41894717	15513156	511.140	510.524
17) L4 AR-1242-2	5.625	4.735	61394985	22496775	511.526	506.709
18) L4 AR-1242-3	5.687	4.911	39168611	12109136	510.352	517.934
19) L4 AR-1242-4	5.786	4.996	29181968	13274605	509.200	509.580
20) L4 AR-1242-5	6.530	5.519	4383078	10852963	70.140	379.911 #
21) L5 AR-1248-1	5.603	4.717	41894717	15513156	673.939	666.611
22) L5 AR-1248-2	5.878	4.954	27916687	10959771	292.291	302.417
23) L5 AR-1248-3	6.084	4.996	30270913	13274605	290.901	353.738
24) L5 AR-1248-4	6.489	5.167	4190421	13279761	41.151	308.678 #
25) L5 AR-1248-5	6.530	5.560	4383078	1505202	42.821	40.927
26) L6 AR-1254-1	6.464	5.519	23375513	10852963	200.030	172.918
27) L6 AR-1254-2	6.685	5.667	23047764	10559454	134.887	187.385 #
28) L6 AR-1254-3	7.053	6.088	13456843	17927856	80.949	208.236 #
29) L6 AR-1254-4	7.342	6.301	7267764	1716907	68.179	37.544 #
30) L6 AR-1254-5	7.764	6.721	71395176	32251284	527.257	436.702
31) L7 AR-1260-1	7.220	6.203	55837109	25483444	430.999	419.146
32) L7 AR-1260-2	7.479	6.392	59302030	30044264	401.707	415.569
33) L7 AR-1260-3	7.842	6.545	40335441	27548033	358.599	411.972
34) L7 AR-1260-4	8.070	7.020	48594361	19909058	378.939	361.775
35) L7 AR-1260-5	8.396	7.263	89223595	44223519	399.326	375.633
36) L8 AR-1262-1	7.764	6.721	71395176	32251284	718.235	863.059
37) L8 AR-1262-2	8.396	7.263	89223595	44223519	375.952	371.367
38) L8 AR-1262-3	8.729	7.611	57591141	31776781	341.014	351.570
39) L8 AR-1262-4	8.789	7.611	35222224	31776781	393.272	351.570
40) L8 AR-1262-5	9.479	8.109	22640086	10040572	237.045	245.343
41) L9 AR-1268-1	8.729	7.548	57591141	8938024	180.351	57.113 #

Data Path : Z:\pestpcbsrv\HPCHEM1\ECD\_0\Data\P0032223\  
 Data File : P0093438.D  
 Signal(s) : Signal #1: ECD1A.ch Signal #2: ECD2B.ch  
 Acq On : 22 Mar 2023 19:25  
 Operator : YP/AJ  
 Sample : PB151616BS  
 Misc :  
 ALS Vial : 22 Sample Multiplier: 1

Instrument :  
 ECD\_0  
 ClientSampleId :

Integration File signal 1: autoint1.e  
 Integration File signal 2: autoint2.e  
 Quant Time: Mar 23 01:04:32 2023  
 Quant Method : Z:\pestpcbsrv\HPCHEM1\ECD\_0\methods\P0031323.M  
 Quant Title : GC EXTRACTABLES  
 QLast Update : Tue Mar 14 05:32:59 2023  
 Response via : Initial Calibration  
 Integrator: ChemStation

Volume Inj. : 2 µl  
 Signal #1 Phase : ZB-MR1 Signal #2 Phase: ZB-MR2  
 Signal #1 Info : 30Mx0.32mmx 0.50µ Signal #2 Info : 30M x 0.32mm x 0.25µm

	Compound	RT#1	RT#2	Resp#1	Resp#2	ng/ml	ng/ml
42)	L9 AR-1268-2	8.789	7.611	35222224	31776781	121.324	227.603 #
43)	L9 AR-1268-3	9.043	7.820	1692571	913077	6.631	7.338
44)	L9 AR-1268-4	9.479	8.109	22640086	10040572	211.997	203.611
45)	L9 AR-1268-5	9.905	8.402	7639328	3179446	9.516	9.004

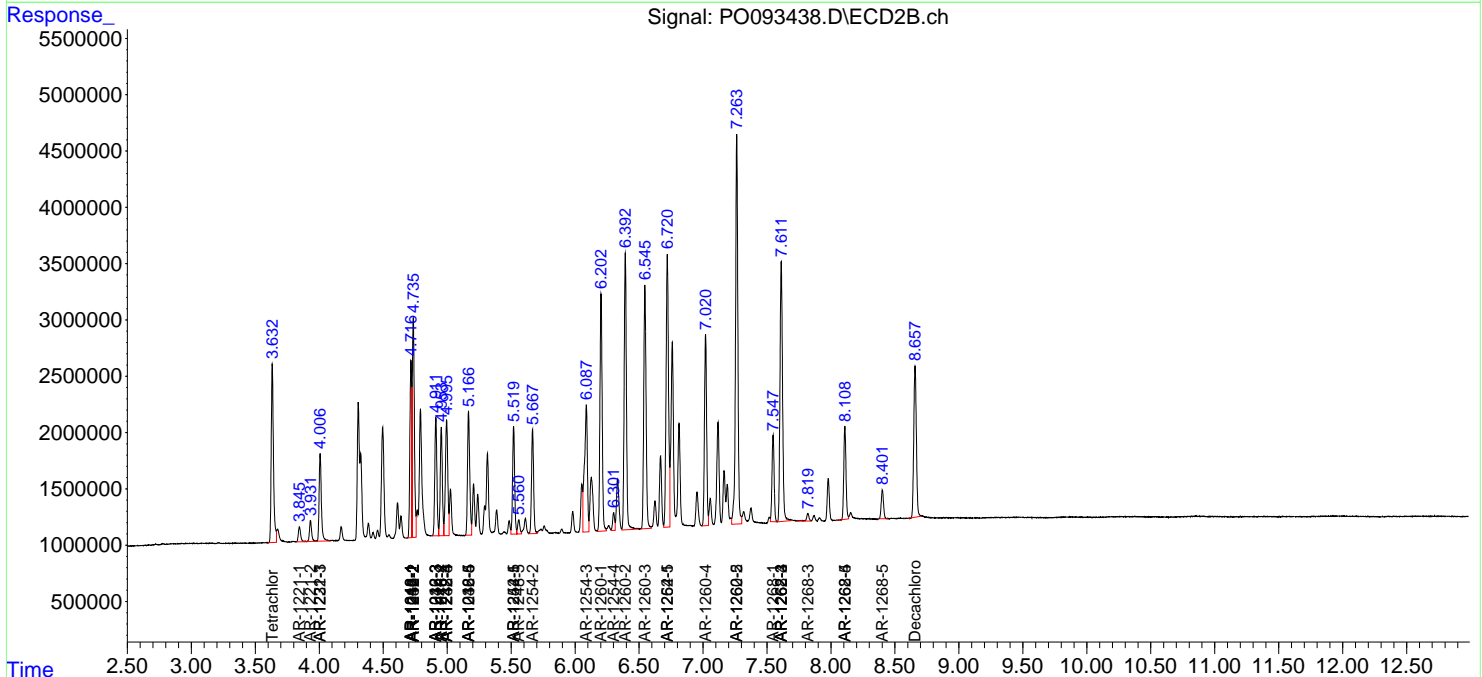
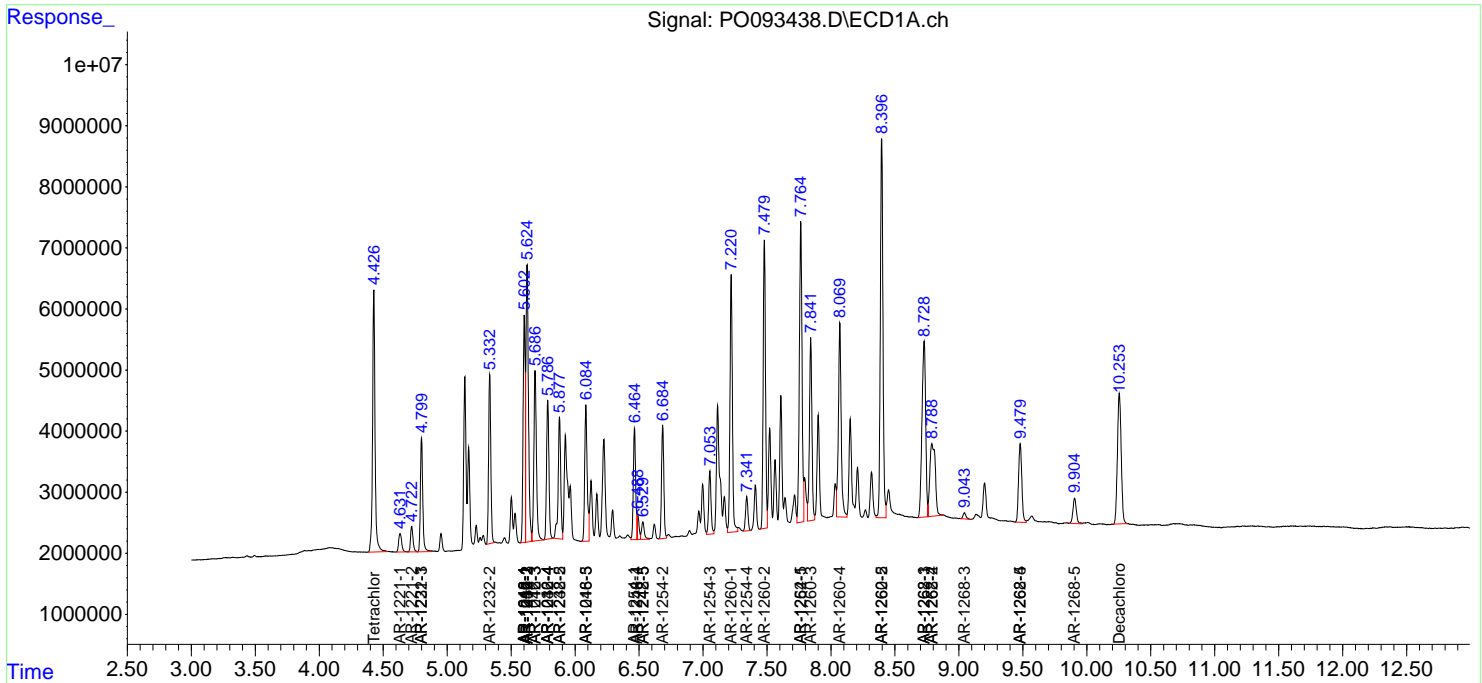
(f)=RT Delta > 1/2 Window (#)=Amounts differ by > 25% (m)=manual int.

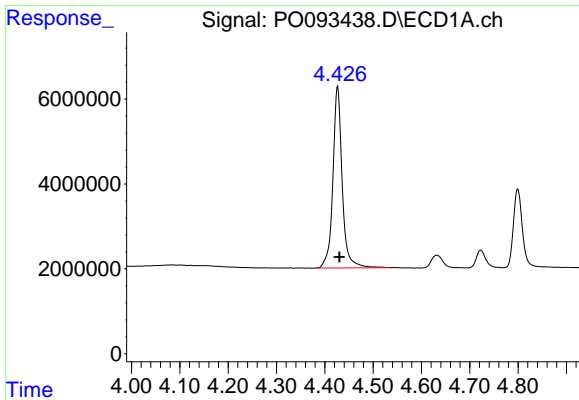
Data Path : Z:\pestpcbsrv\HPCHEM1\ECD\_O\Data\P0032223\  
 Data File : P0093438.D  
 Signal(s) : Signal #1: ECD1A.ch Signal #2: ECD2B.ch  
 Acq On : 22 Mar 2023 19:25  
 Operator : YP/AJ  
 Sample : PB151616BS  
 Misc :  
 ALS Vial : 22 Sample Multiplier: 1

Instrument :  
 ECD\_O  
 ClientSampleId :

Integration File signal 1: autoint1.e  
 Integration File signal 2: autoint2.e  
 Quant Time: Mar 23 01:04:32 2023  
 Quant Method : Z:\pestpcbsrv\HPCHEM1\ECD\_O\methods\P0031323.M  
 Quant Title : GC EXTRACTABLES  
 QLast Update : Tue Mar 14 05:32:59 2023  
 Response via : Initial Calibration  
 Integrator: ChemStation

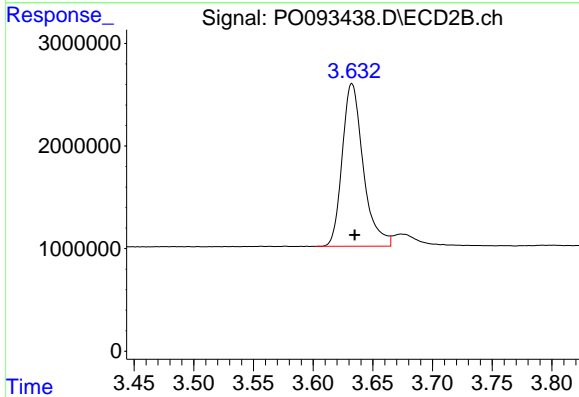
Volume Inj. : 2 µl  
 Signal #1 Phase : ZB-MR1 Signal #2 Phase: ZB-MR2  
 Signal #1 Info : 30Mx0.32mmx 0.50µ Signal #2 Info : 30M x 0.32mm x 0.25µm



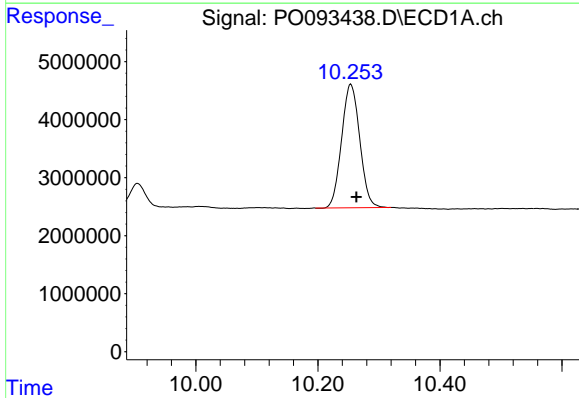


#1 Tetrachloro-m-xylene  
 R.T.: 4.427 min  
 Delta R.T.: -0.003 min  
 Response: 57661948  
 Conc: 18.41 ng/ml

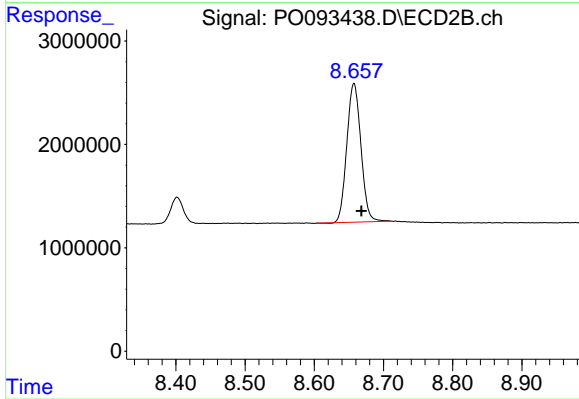
Instrument :  
 ECD\_O  
 ClientSampleId :



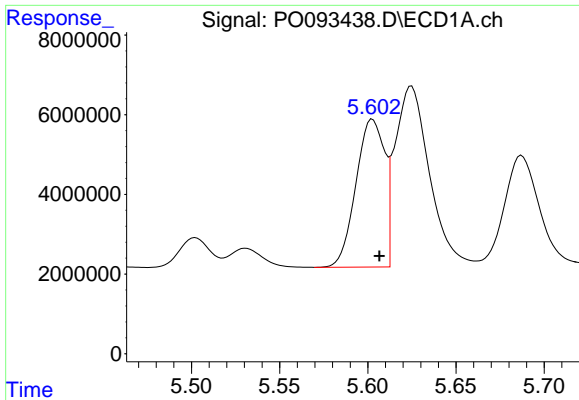
#1 Tetrachloro-m-xylene  
 R.T.: 3.633 min  
 Delta R.T.: -0.002 min  
 Response: 19386880  
 Conc: 17.19 ng/ml



#2 Decachlorobiphenyl  
 R.T.: 10.254 min  
 Delta R.T.: -0.009 min  
 Response: 43979598  
 Conc: 20.32 ng/ml



#2 Decachlorobiphenyl  
 R.T.: 8.657 min  
 Delta R.T.: -0.011 min  
 Response: 19004501  
 Conc: 19.41 ng/ml

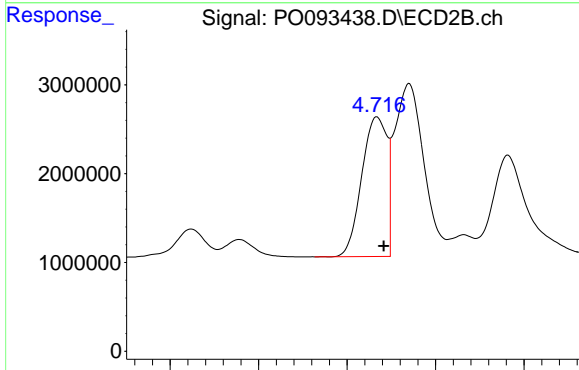


#3 AR-1016-1

R.T.: 5.603 min  
 Delta R.T.: -0.004 min  
 Response: 41894717  
 Conc: 438.45 ng/ml

Instrument :  
 ECD\_O  
 ClientSampleId :

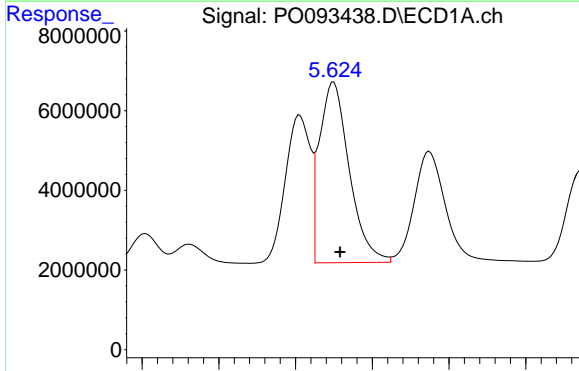
Time



#3 AR-1016-1

R.T.: 4.717 min  
 Delta R.T.: -0.004 min  
 Response: 15513156  
 Conc: 433.38 ng/ml

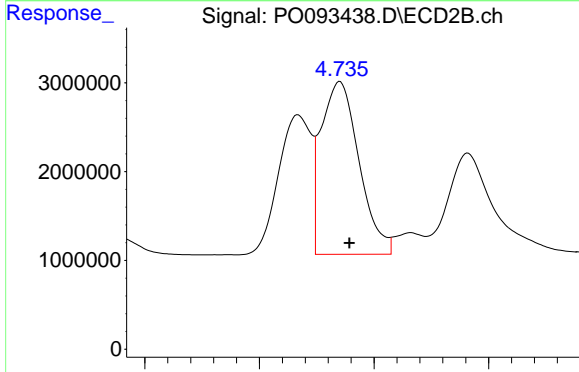
Time



#4 AR-1016-2

R.T.: 5.625 min  
 Delta R.T.: -0.004 min  
 Response: 61394985  
 Conc: 429.96 ng/ml

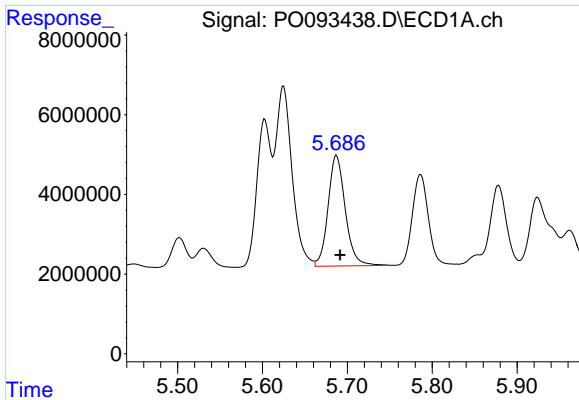
Time



#4 AR-1016-2

R.T.: 4.735 min  
 Delta R.T.: -0.004 min  
 Response: 22496775  
 Conc: 433.50 ng/ml

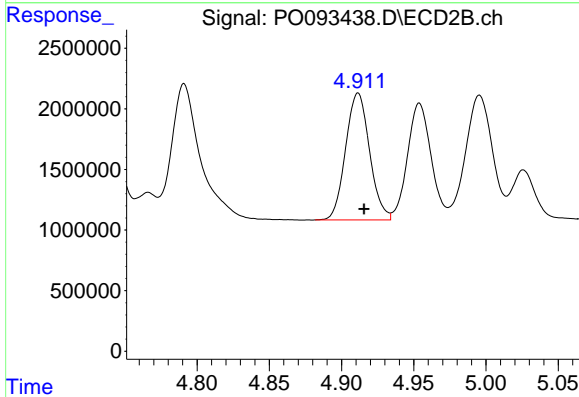
Time



#5 AR-1016-3

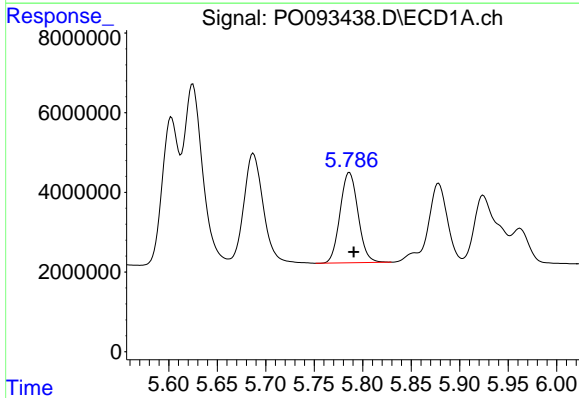
R.T.: 5.687 min  
 Delta R.T.: -0.004 min  
 Response: 39168611  
 Conc: 431.69 ng/ml

Instrument :  
 ECD\_O  
 ClientSampleId :



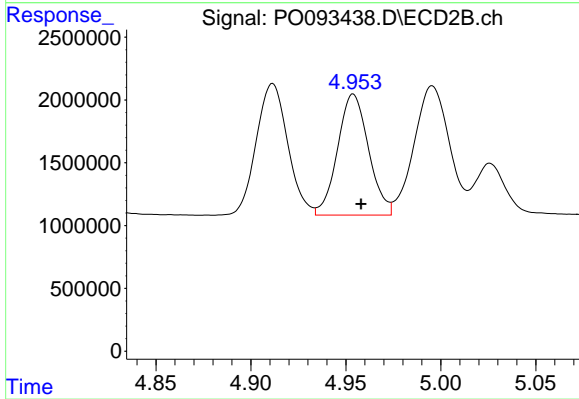
#5 AR-1016-3

R.T.: 4.911 min  
 Delta R.T.: -0.004 min  
 Response: 12109136  
 Conc: 437.70 ng/ml



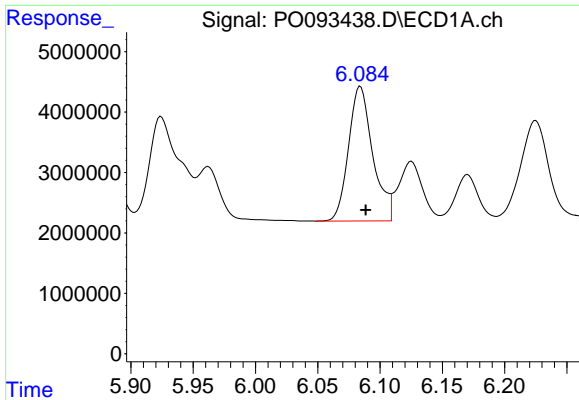
#6 AR-1016-4

R.T.: 5.786 min  
 Delta R.T.: -0.005 min  
 Response: 29181968  
 Conc: 430.72 ng/ml



#6 AR-1016-4

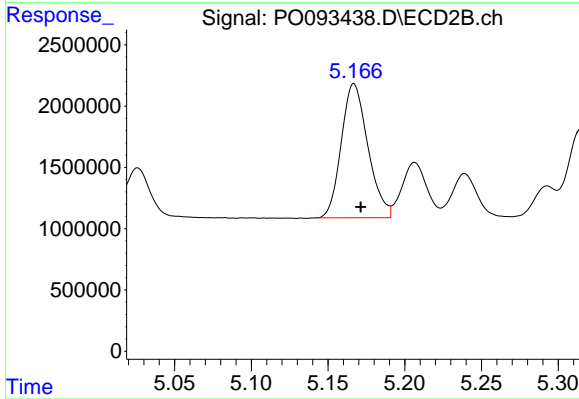
R.T.: 4.954 min  
 Delta R.T.: -0.004 min  
 Response: 10959771  
 Conc: 440.79 ng/ml



#7 AR-1016-5

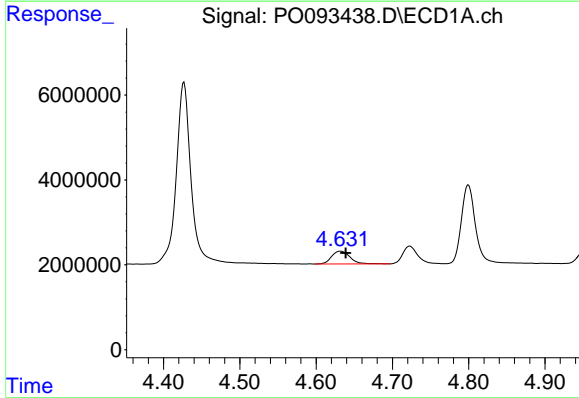
R.T.: 6.084 min  
 Delta R.T.: -0.004 min  
 Response: 30270913  
 Conc: 404.30 ng/ml

Instrument :  
 ECD\_O  
 ClientSampleId :



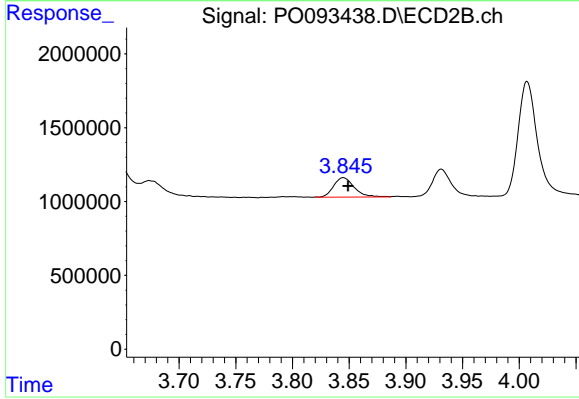
#7 AR-1016-5

R.T.: 5.167 min  
 Delta R.T.: -0.004 min  
 Response: 13279761  
 Conc: 419.60 ng/ml



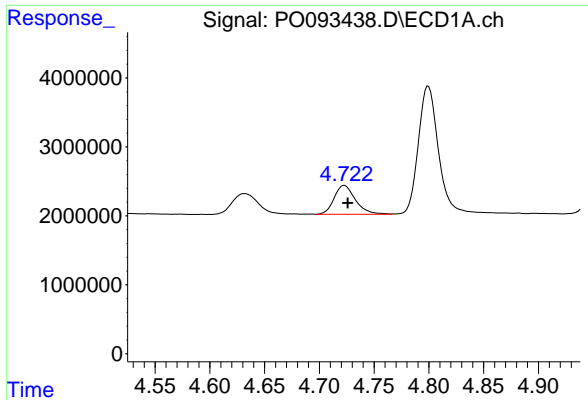
#8 AR-1221-1

R.T.: 4.632 min  
 Delta R.T.: -0.007 min  
 Response: 5046052  
 Conc: 124.83 ng/ml



#8 AR-1221-1

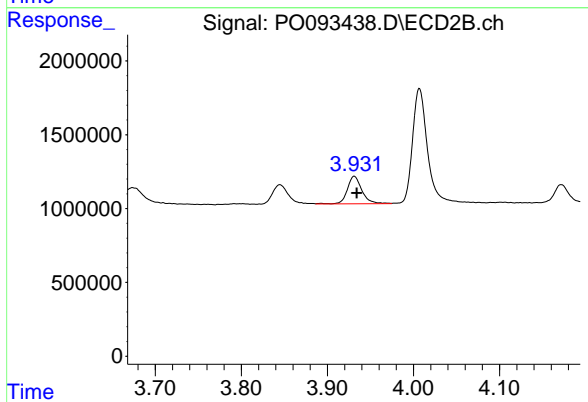
R.T.: 3.845 min  
 Delta R.T.: -0.004 min  
 Response: 1677849  
 Conc: 114.10 ng/ml



#9 AR-1221-2

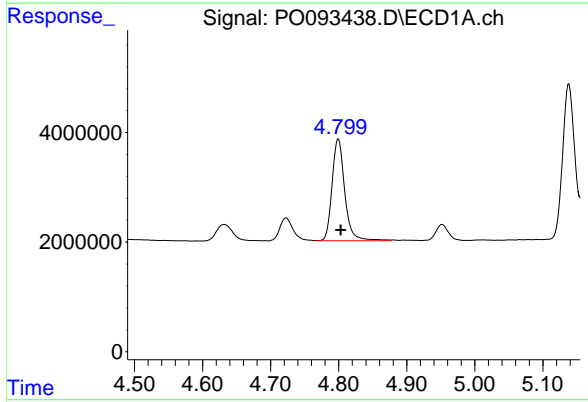
R.T.: 4.723 min  
 Delta R.T.: -0.003 min  
 Response: 5659790  
 Conc: 186.76 ng/ml

Instrument :  
 ECD\_O  
 ClientSampleId :



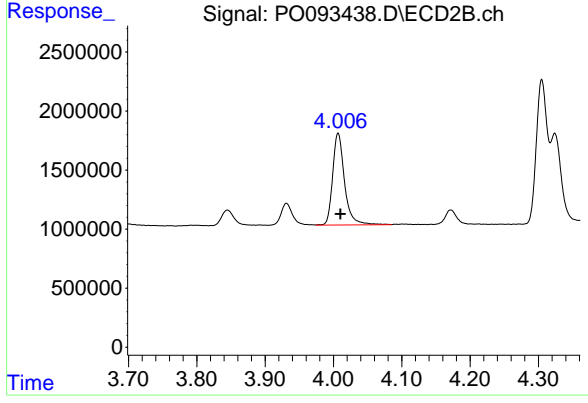
#9 AR-1221-2

R.T.: 3.931 min  
 Delta R.T.: -0.003 min  
 Response: 2183093  
 Conc: 199.90 ng/ml



#10 AR-1221-3

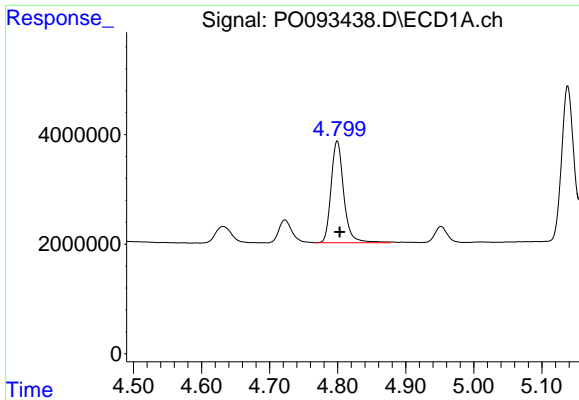
R.T.: 4.800 min  
 Delta R.T.: -0.003 min  
 Response: 24032776  
 Conc: 262.88 ng/ml



#10 AR-1221-3

R.T.: 4.007 min  
 Delta R.T.: -0.003 min  
 Response: 9390267  
 Conc: 275.64 ng/ml

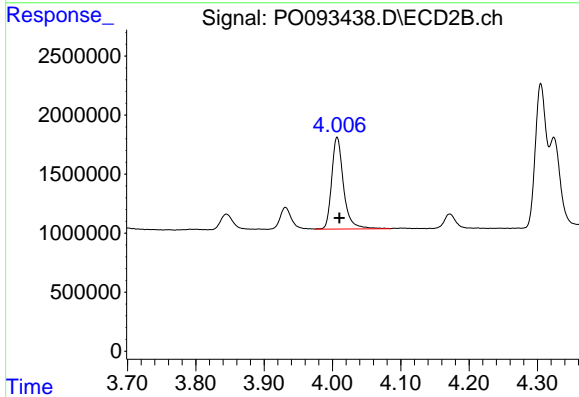




#11 AR-1232-1

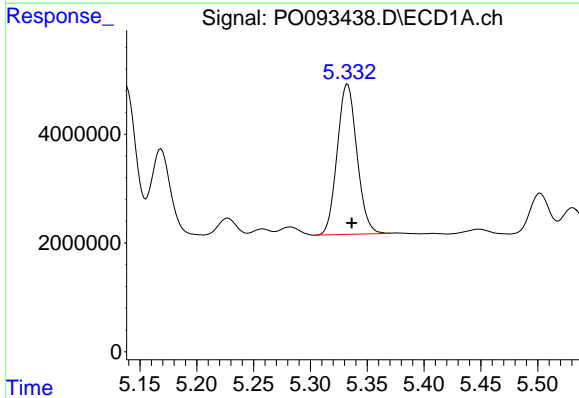
R.T.: 4.800 min  
 Delta R.T.: -0.003 min  
 Response: 24032776  
 Conc: 329.18 ng/ml

Instrument :  
 ECD\_O  
 ClientSampleId :



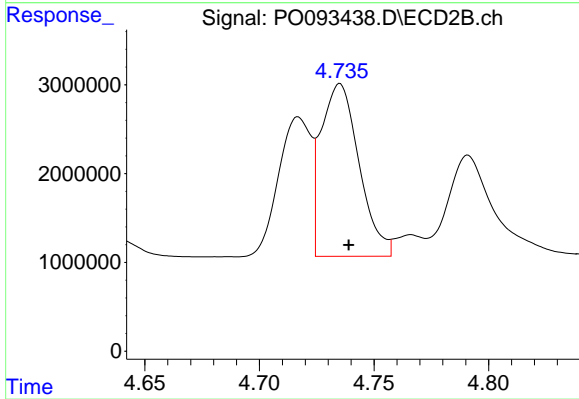
#11 AR-1232-1

R.T.: 4.007 min  
 Delta R.T.: -0.003 min  
 Response: 9390267  
 Conc: 332.47 ng/ml



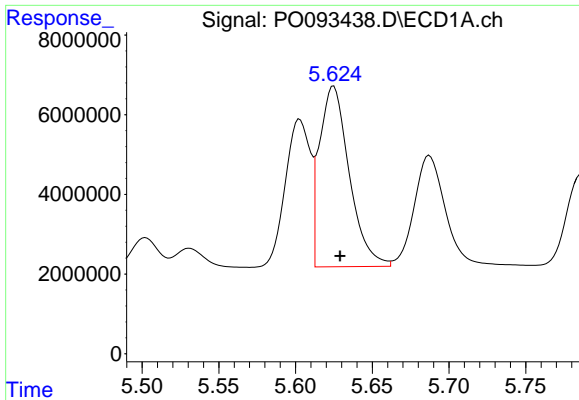
#12 AR-1232-2

R.T.: 5.333 min  
 Delta R.T.: -0.004 min  
 Response: 33357995  
 Conc: 927.74 ng/ml



#12 AR-1232-2

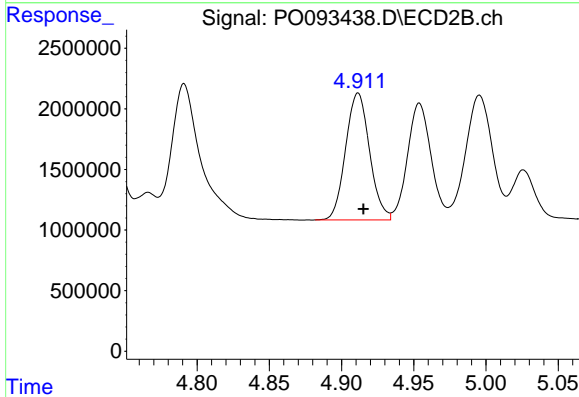
R.T.: 4.735 min  
 Delta R.T.: -0.004 min  
 Response: 22496775  
 Conc: 913.01 ng/ml



#13 AR-1232-3

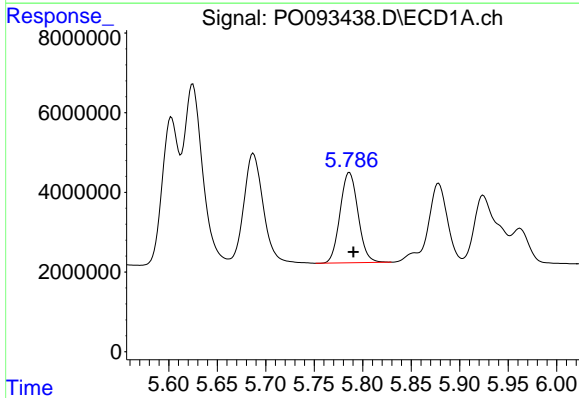
R.T.: 5.625 min  
 Delta R.T.: -0.004 min  
 Response: 61394985  
 Conc: 937.83 ng/ml

Instrument :  
 ECD\_O  
 ClientSampleId :



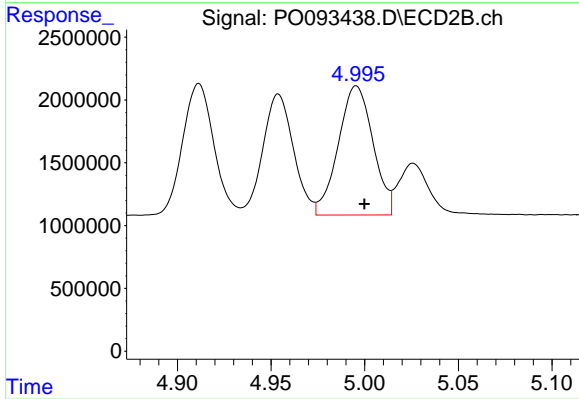
#13 AR-1232-3

R.T.: 4.911 min  
 Delta R.T.: -0.004 min  
 Response: 12109136  
 Conc: 957.11 ng/ml



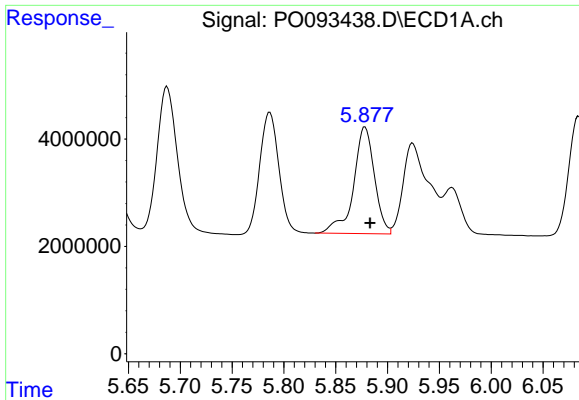
#14 AR-1232-4

R.T.: 5.786 min  
 Delta R.T.: -0.004 min  
 Response: 29181968  
 Conc: 953.13 ng/ml



#14 AR-1232-4

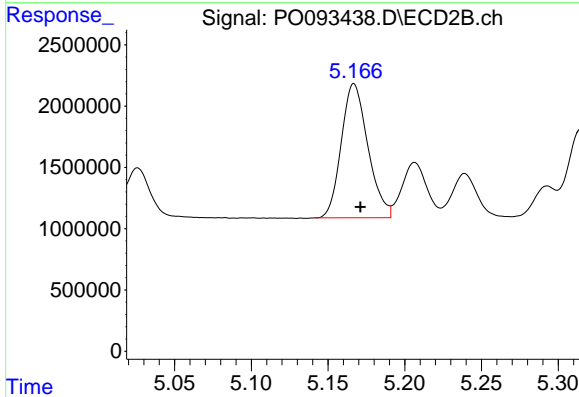
R.T.: 4.996 min  
 Delta R.T.: -0.004 min  
 Response: 13274605  
 Conc: 1036.46 ng/ml



#15 AR-1232-5

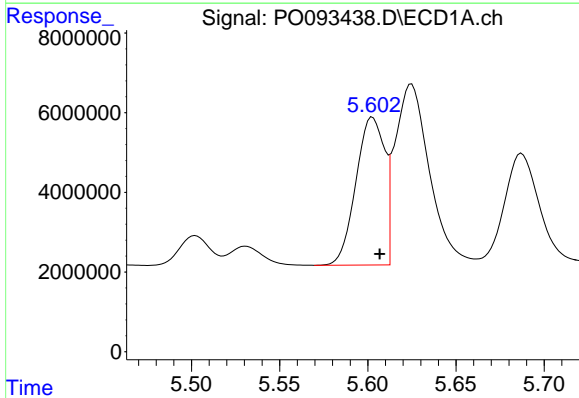
R.T.: 5.878 min  
 Delta R.T.: -0.005 min  
 Response: 27916687  
 Conc: 1006.06 ng/ml

Instrument :  
 ECD\_O  
 ClientSampleId :



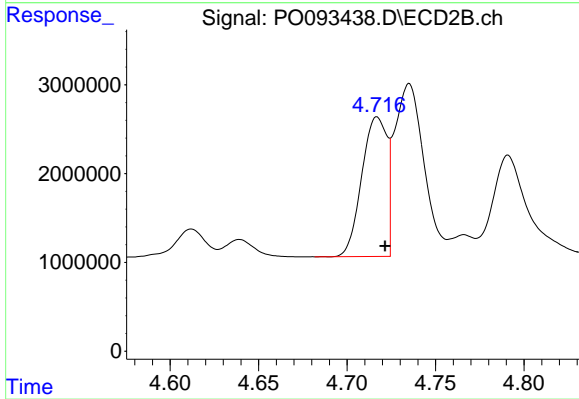
#15 AR-1232-5

R.T.: 5.167 min  
 Delta R.T.: -0.004 min  
 Response: 13279761  
 Conc: 946.92 ng/ml



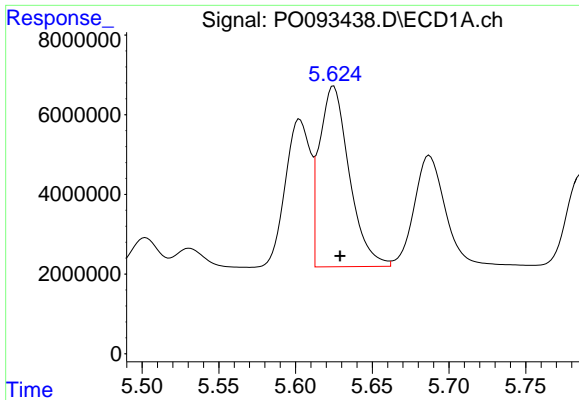
#16 AR-1242-1

R.T.: 5.603 min  
 Delta R.T.: -0.004 min  
 Response: 41894717  
 Conc: 511.14 ng/ml



#16 AR-1242-1

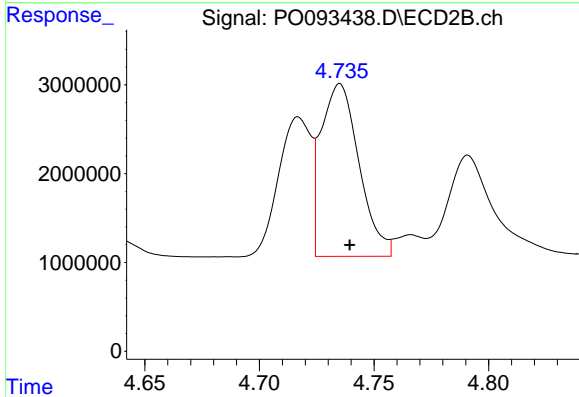
R.T.: 4.717 min  
 Delta R.T.: -0.004 min  
 Response: 15513156  
 Conc: 510.52 ng/ml



#17 AR-1242-2

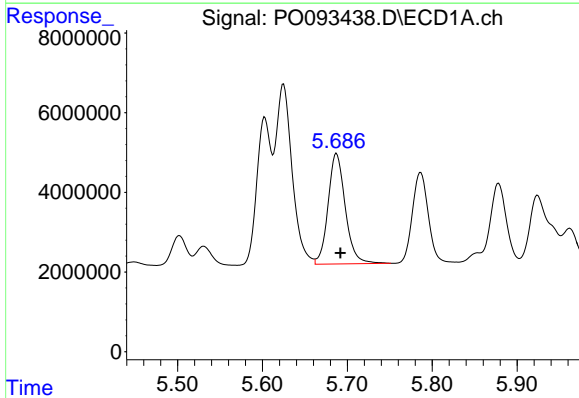
R.T.: 5.625 min  
 Delta R.T.: -0.004 min  
 Response: 61394985  
 Conc: 511.53 ng/ml

Instrument :  
 ECD\_O  
 ClientSampleId :



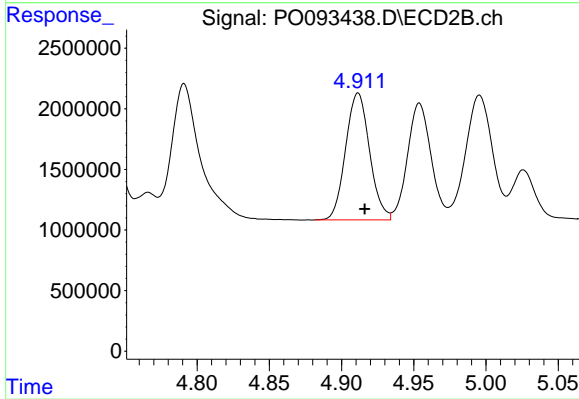
#17 AR-1242-2

R.T.: 4.735 min  
 Delta R.T.: -0.004 min  
 Response: 22496775  
 Conc: 506.71 ng/ml



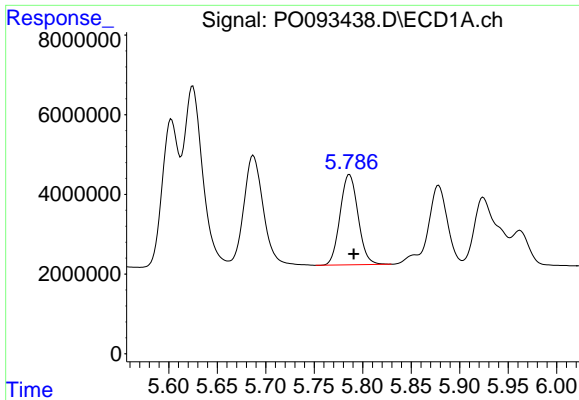
#18 AR-1242-3

R.T.: 5.687 min  
 Delta R.T.: -0.005 min  
 Response: 39168611  
 Conc: 510.35 ng/ml



#18 AR-1242-3

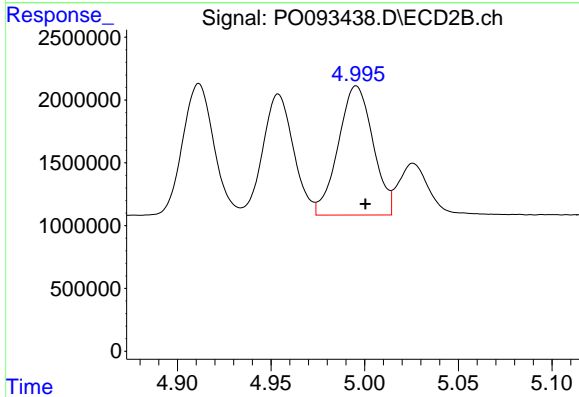
R.T.: 4.911 min  
 Delta R.T.: -0.005 min  
 Response: 12109136  
 Conc: 517.93 ng/ml



#19 AR-1242-4

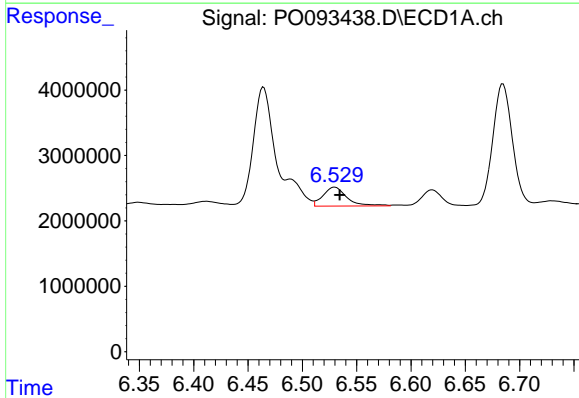
R.T.: 5.786 min  
 Delta R.T.: -0.004 min  
 Response: 29181968  
 Conc: 509.20 ng/ml

Instrument :  
 ECD\_O  
 ClientSampleId :



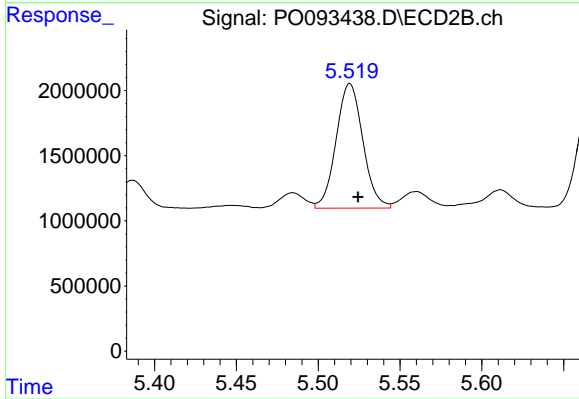
#19 AR-1242-4

R.T.: 4.996 min  
 Delta R.T.: -0.005 min  
 Response: 13274605  
 Conc: 509.58 ng/ml



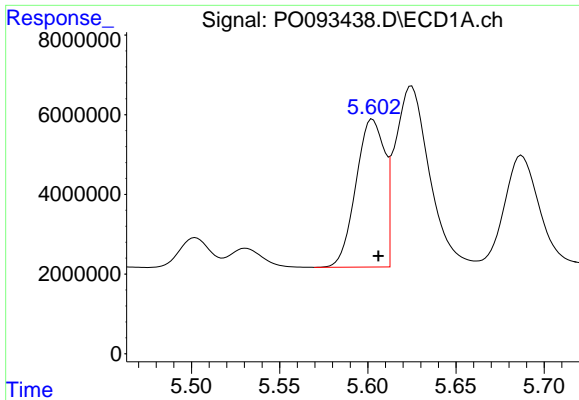
#20 AR-1242-5

R.T.: 6.530 min  
 Delta R.T.: -0.005 min  
 Response: 4383078  
 Conc: 70.14 ng/ml



#20 AR-1242-5

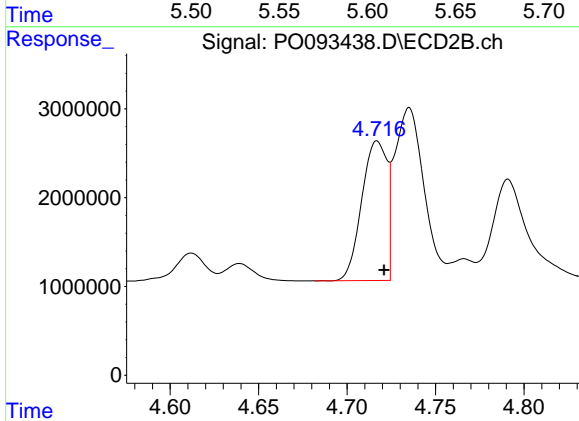
R.T.: 5.519 min  
 Delta R.T.: -0.005 min  
 Response: 10852963  
 Conc: 379.91 ng/ml



#21 AR-1248-1

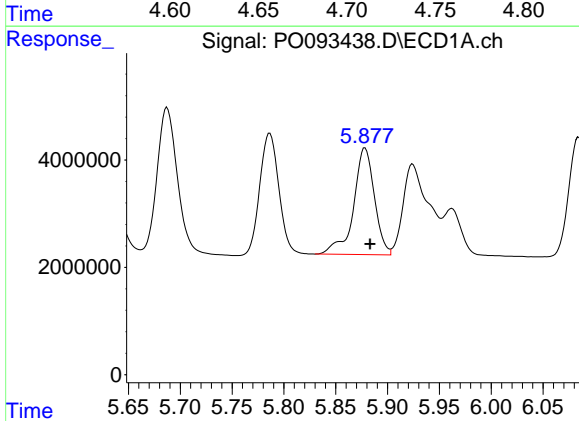
R.T.: 5.603 min  
 Delta R.T.: -0.003 min  
 Response: 41894717  
 Conc: 673.94 ng/ml

Instrument :  
 ECD\_O  
 ClientSampleId :



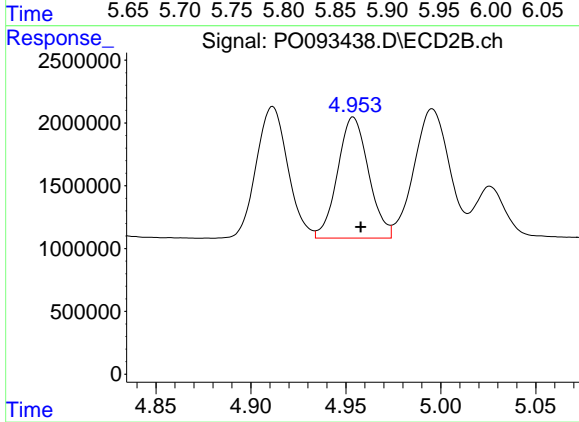
#21 AR-1248-1

R.T.: 4.717 min  
 Delta R.T.: -0.004 min  
 Response: 15513156  
 Conc: 666.61 ng/ml



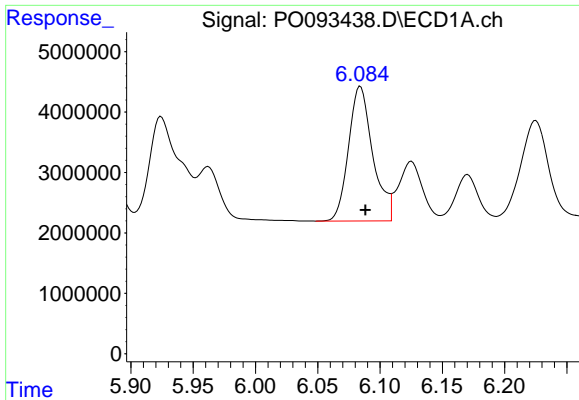
#22 AR-1248-2

R.T.: 5.878 min  
 Delta R.T.: -0.005 min  
 Response: 27916687  
 Conc: 292.29 ng/ml



#22 AR-1248-2

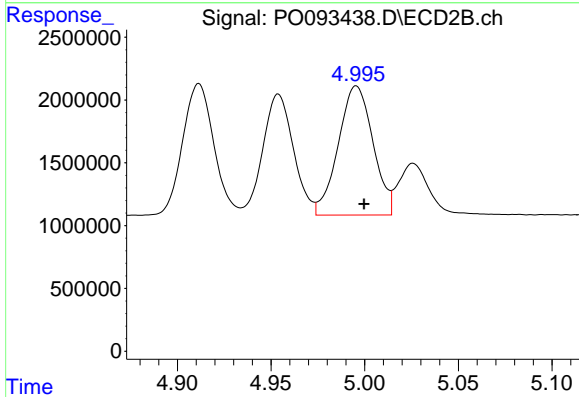
R.T.: 4.954 min  
 Delta R.T.: -0.004 min  
 Response: 10959771  
 Conc: 302.42 ng/ml



#23 AR-1248-3

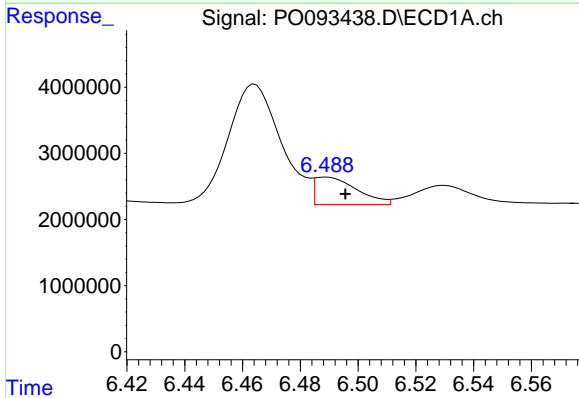
R.T.: 6.084 min  
 Delta R.T.: -0.004 min  
 Response: 30270913  
 Conc: 290.90 ng/ml

Instrument :  
 ECD\_O  
 ClientSampleId :



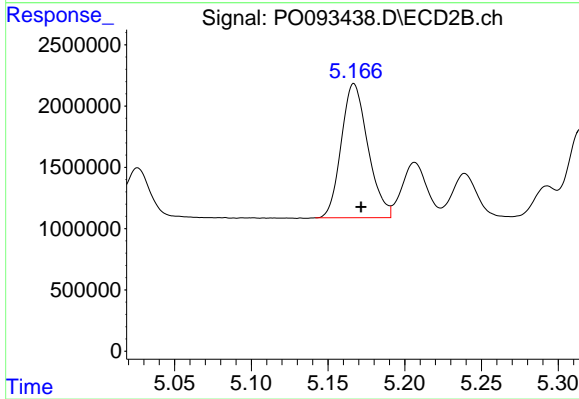
#23 AR-1248-3

R.T.: 4.996 min  
 Delta R.T.: -0.004 min  
 Response: 13274605  
 Conc: 353.74 ng/ml



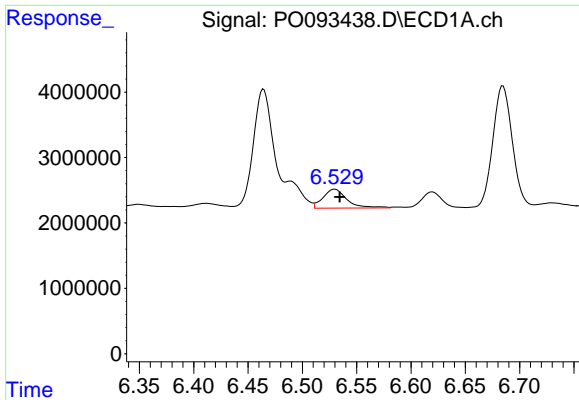
#24 AR-1248-4

R.T.: 6.489 min  
 Delta R.T.: -0.007 min  
 Response: 4190421  
 Conc: 41.15 ng/ml



#24 AR-1248-4

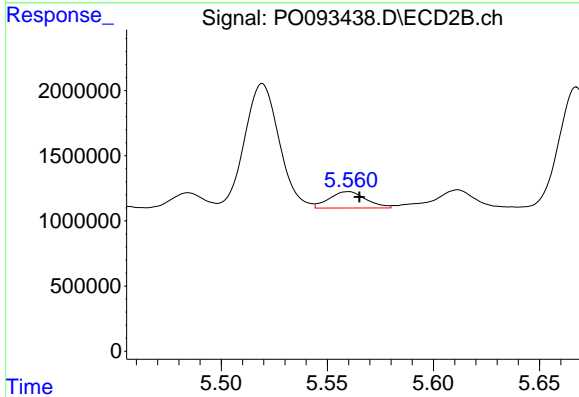
R.T.: 5.167 min  
 Delta R.T.: -0.005 min  
 Response: 13279761  
 Conc: 308.68 ng/ml



#25 AR-1248-5

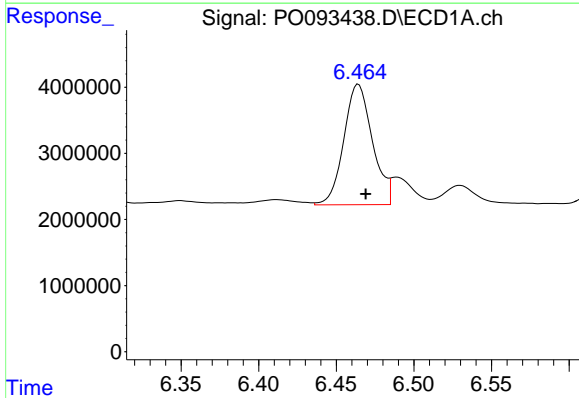
R.T.: 6.530 min  
 Delta R.T.: -0.005 min  
 Response: 4383078  
 Conc: 42.82 ng/ml

Instrument :  
 ECD\_O  
 ClientSampleId :



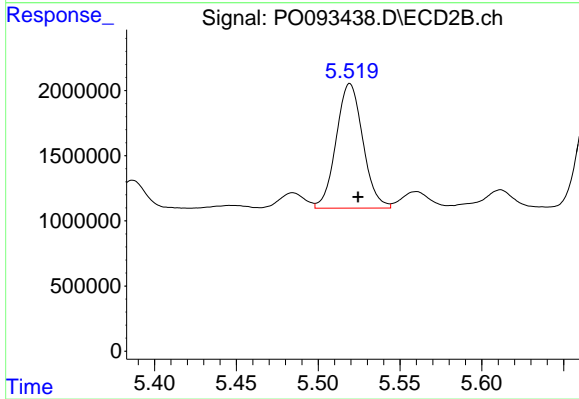
#25 AR-1248-5

R.T.: 5.560 min  
 Delta R.T.: -0.005 min  
 Response: 1505202  
 Conc: 40.93 ng/ml



#26 AR-1254-1

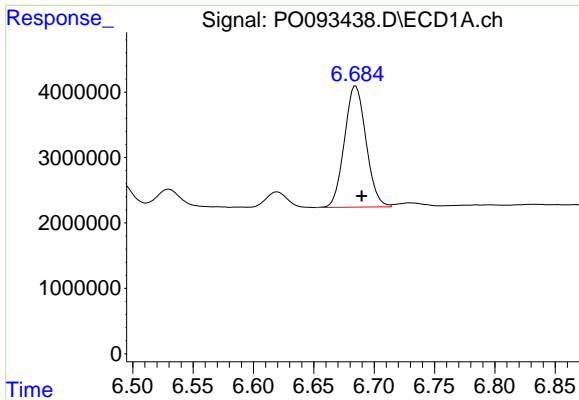
R.T.: 6.464 min  
 Delta R.T.: -0.005 min  
 Response: 23375513  
 Conc: 200.03 ng/ml



#26 AR-1254-1

R.T.: 5.519 min  
 Delta R.T.: -0.005 min  
 Response: 10852963  
 Conc: 172.92 ng/ml

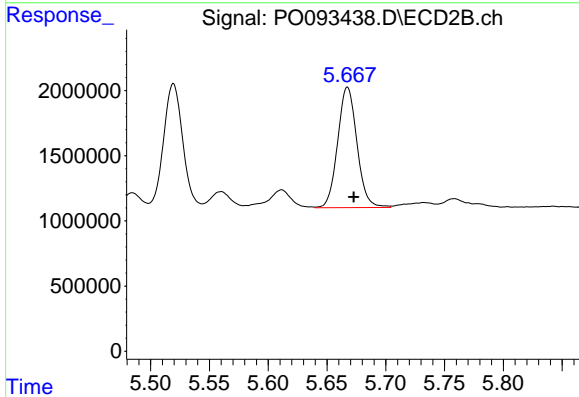




#27 AR-1254-2

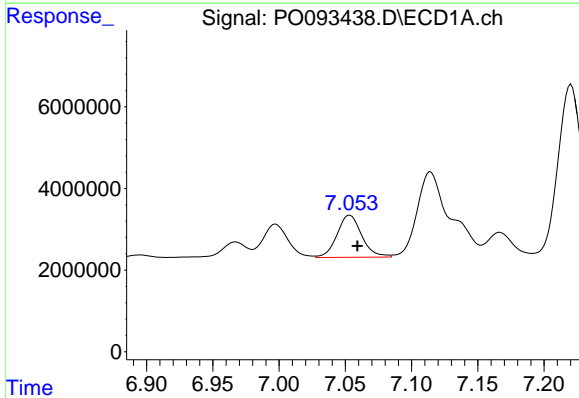
R.T.: 6.685 min  
 Delta R.T.: -0.005 min  
 Response: 23047764  
 Conc: 134.89 ng/ml

Instrument :  
 ECD\_O  
 ClientSampleId :



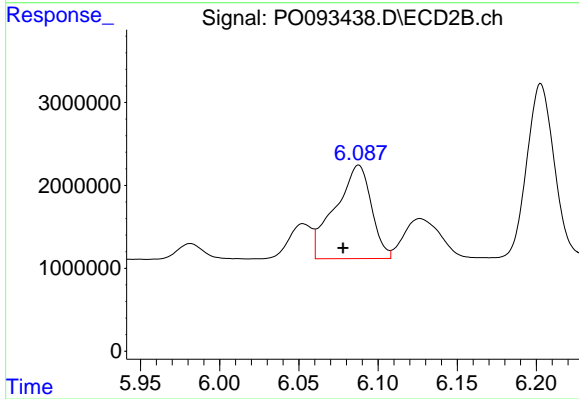
#27 AR-1254-2

R.T.: 5.667 min  
 Delta R.T.: -0.005 min  
 Response: 10559454  
 Conc: 187.38 ng/ml



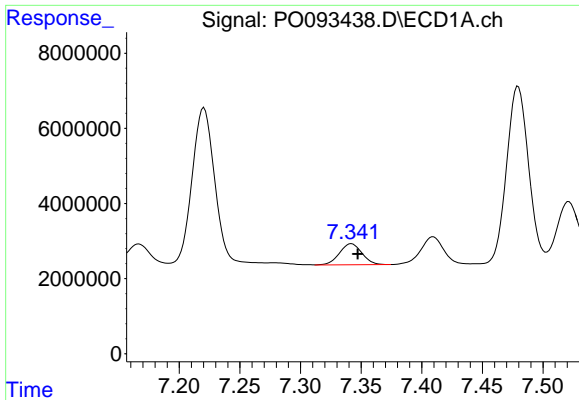
#28 AR-1254-3

R.T.: 7.053 min  
 Delta R.T.: -0.006 min  
 Response: 13456843  
 Conc: 80.95 ng/ml



#28 AR-1254-3

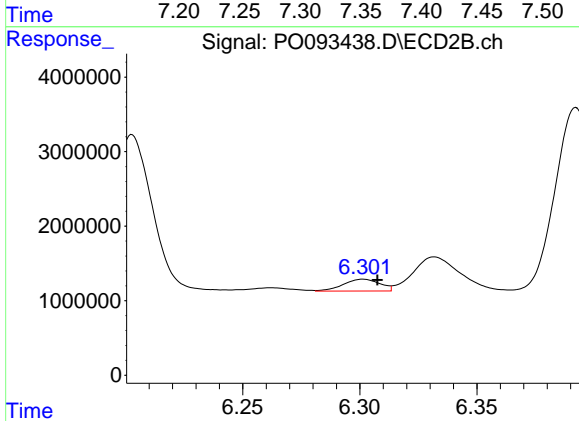
R.T.: 6.088 min  
 Delta R.T.: 0.010 min  
 Response: 17927856  
 Conc: 208.24 ng/ml



#29 AR-1254-4

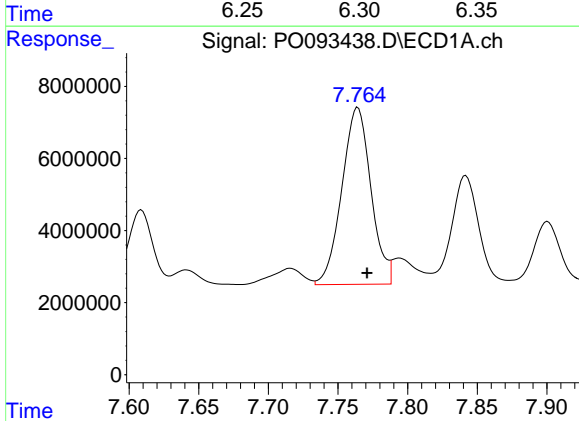
R.T.: 7.342 min  
 Delta R.T.: -0.005 min  
 Response: 7267764  
 Conc: 68.18 ng/ml

Instrument :  
 ECD\_O  
 ClientSampleId :



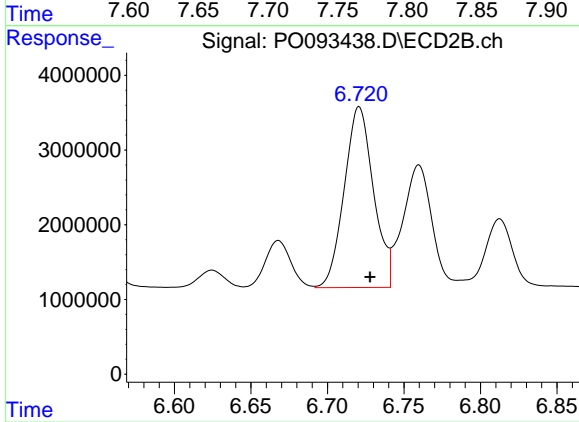
#29 AR-1254-4

R.T.: 6.301 min  
 Delta R.T.: -0.006 min  
 Response: 1716907  
 Conc: 37.54 ng/ml



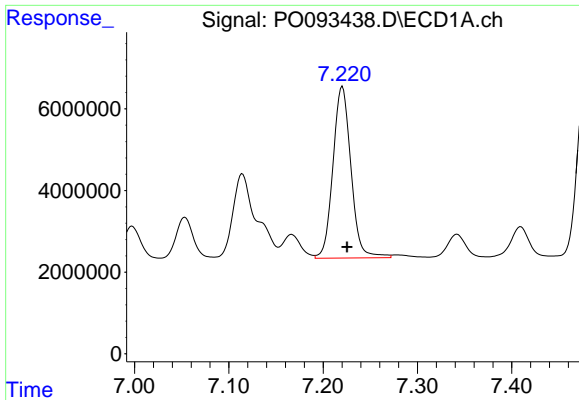
#30 AR-1254-5

R.T.: 7.764 min  
 Delta R.T.: -0.007 min  
 Response: 71395176  
 Conc: 527.26 ng/ml



#30 AR-1254-5

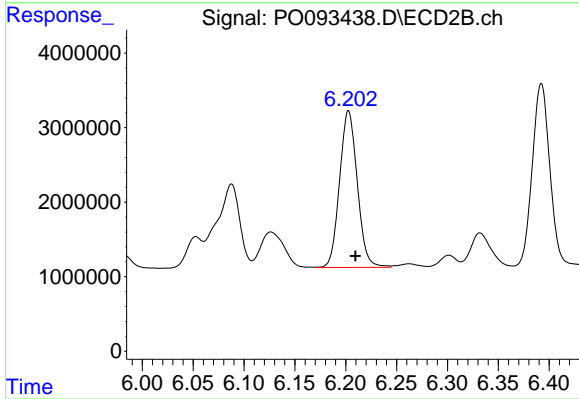
R.T.: 6.721 min  
 Delta R.T.: -0.007 min  
 Response: 32251284  
 Conc: 436.70 ng/ml



#31 AR-1260-1

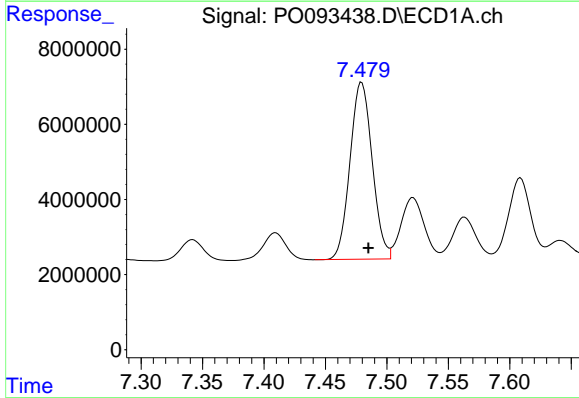
R.T.: 7.220 min  
 Delta R.T.: -0.005 min  
 Response: 55837109  
 Conc: 431.00 ng/ml

Instrument :  
 ECD\_O  
 ClientSampleId :



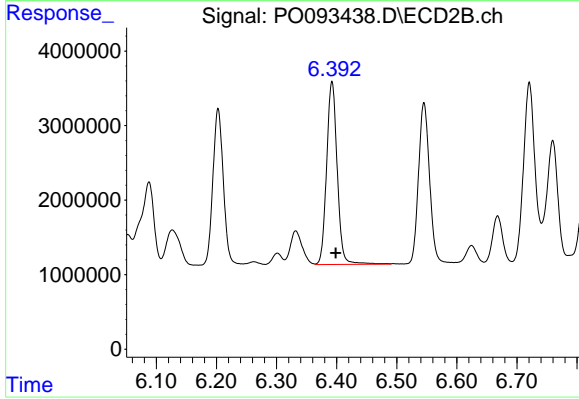
#31 AR-1260-1

R.T.: 6.203 min  
 Delta R.T.: -0.007 min  
 Response: 25483444  
 Conc: 419.15 ng/ml



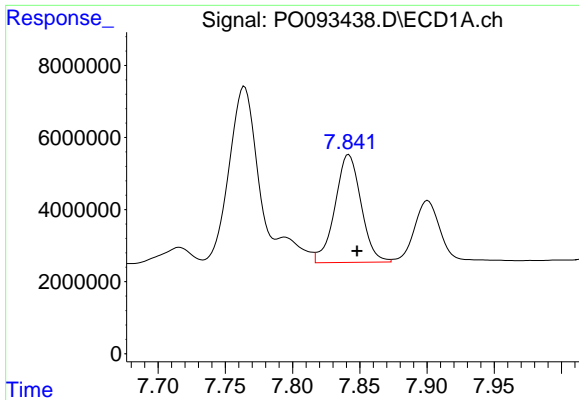
#32 AR-1260-2

R.T.: 7.479 min  
 Delta R.T.: -0.006 min  
 Response: 59302030  
 Conc: 401.71 ng/ml



#32 AR-1260-2

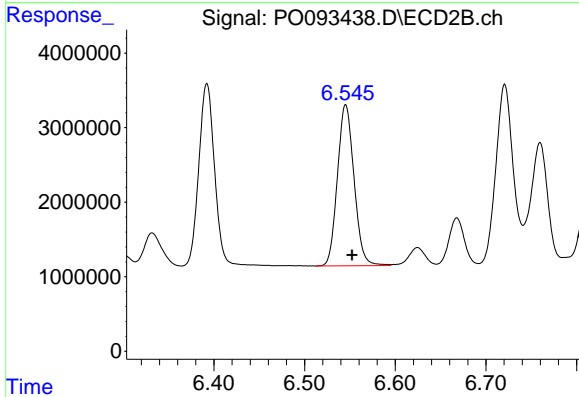
R.T.: 6.392 min  
 Delta R.T.: -0.006 min  
 Response: 30044264  
 Conc: 415.57 ng/ml



#33 AR-1260-3

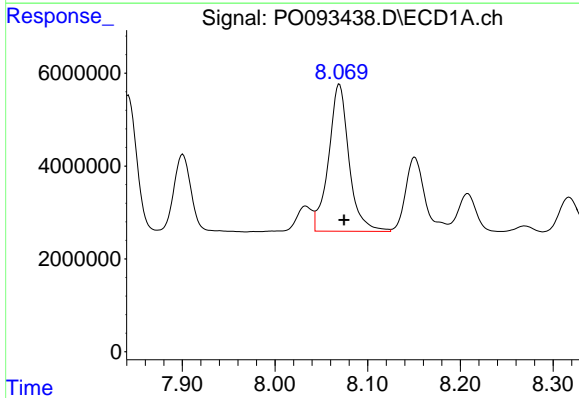
R.T.: 7.842 min  
Delta R.T.: -0.006 min  
Response: 40335441  
Conc: 358.60 ng/ml

Instrument :  
ECD\_O  
ClientSampleId :



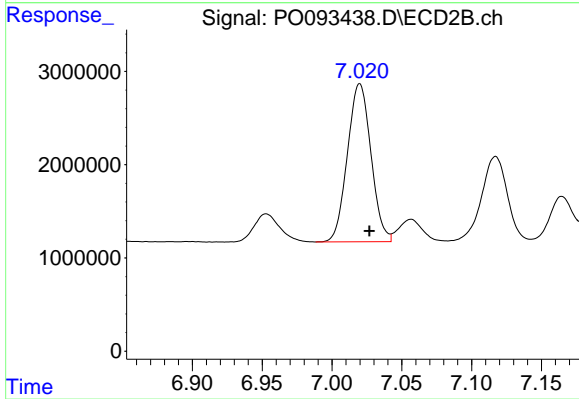
#33 AR-1260-3

R.T.: 6.545 min  
Delta R.T.: -0.007 min  
Response: 27548033  
Conc: 411.97 ng/ml



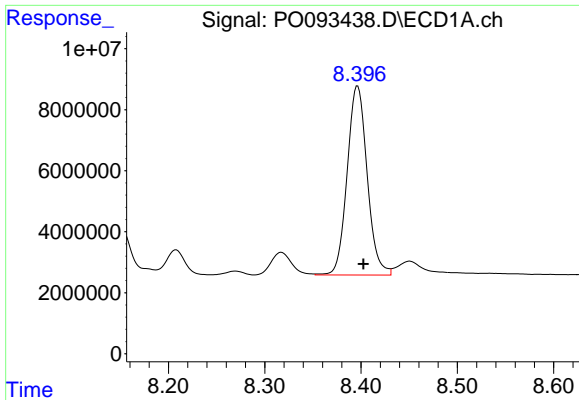
#34 AR-1260-4

R.T.: 8.070 min  
Delta R.T.: -0.005 min  
Response: 48594361  
Conc: 378.94 ng/ml



#34 AR-1260-4

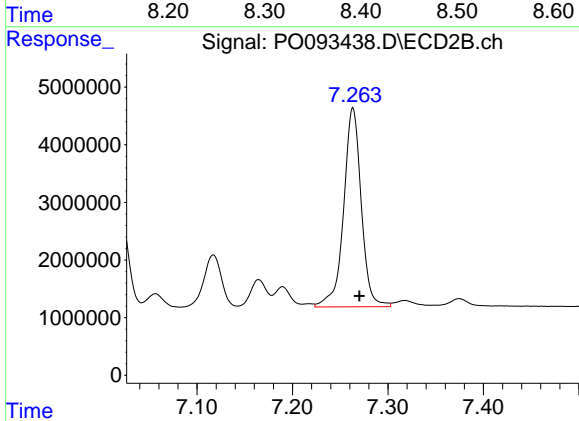
R.T.: 7.020 min  
Delta R.T.: -0.007 min  
Response: 19909058  
Conc: 361.78 ng/ml



#35 AR-1260-5

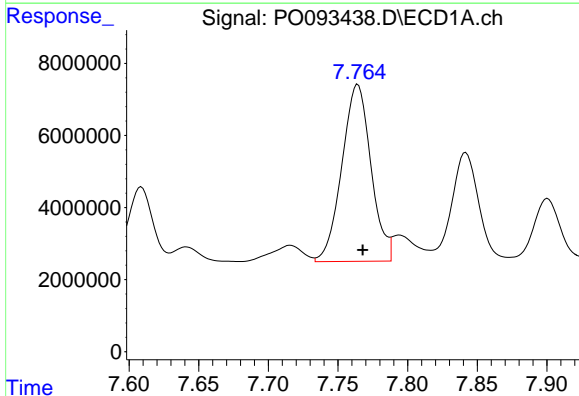
R.T.: 8.396 min  
 Delta R.T.: -0.006 min  
 Response: 89223595  
 Conc: 399.33 ng/ml

Instrument :  
 ECD\_O  
 ClientSampleId :



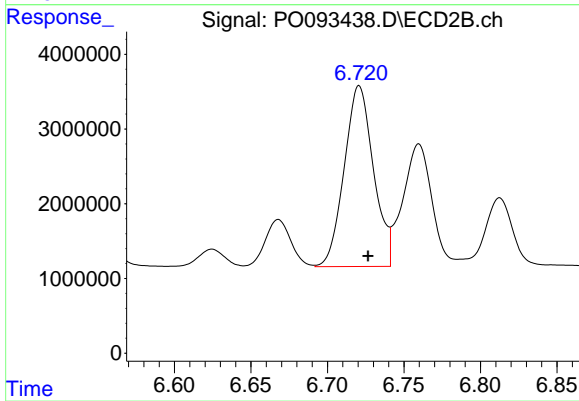
#35 AR-1260-5

R.T.: 7.263 min  
 Delta R.T.: -0.007 min  
 Response: 44223519  
 Conc: 375.63 ng/ml



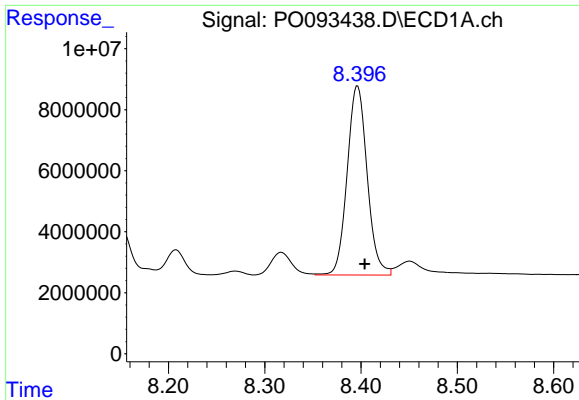
#36 AR-1262-1

R.T.: 7.764 min  
 Delta R.T.: -0.003 min  
 Response: 71395176  
 Conc: 718.23 ng/ml



#36 AR-1262-1

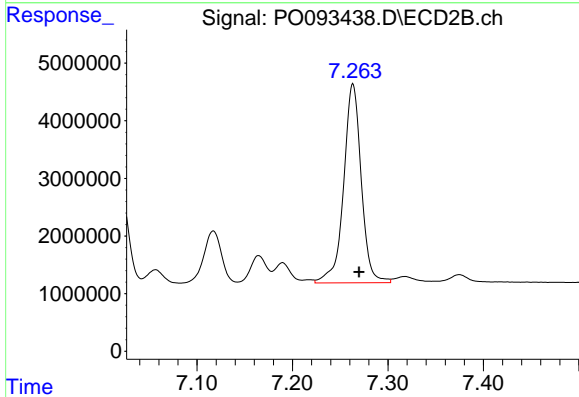
R.T.: 6.721 min  
 Delta R.T.: -0.006 min  
 Response: 32251284  
 Conc: 863.06 ng/ml



#37 AR-1262-2

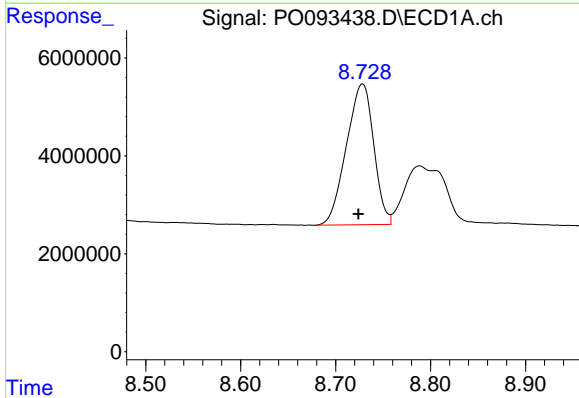
R.T.: 8.396 min  
 Delta R.T.: -0.008 min  
 Response: 89223595  
 Conc: 375.95 ng/ml

Instrument :  
 ECD\_O  
 ClientSampleId :



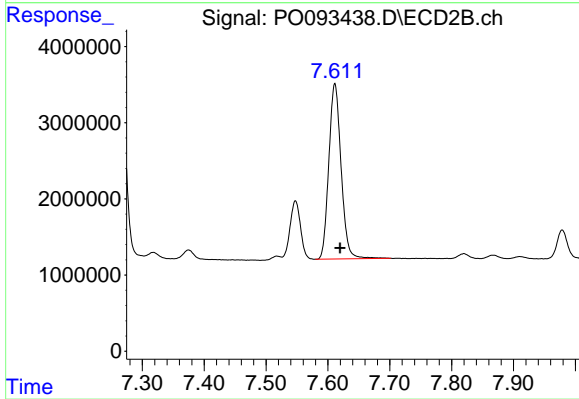
#37 AR-1262-2

R.T.: 7.263 min  
 Delta R.T.: -0.006 min  
 Response: 44223519  
 Conc: 371.37 ng/ml



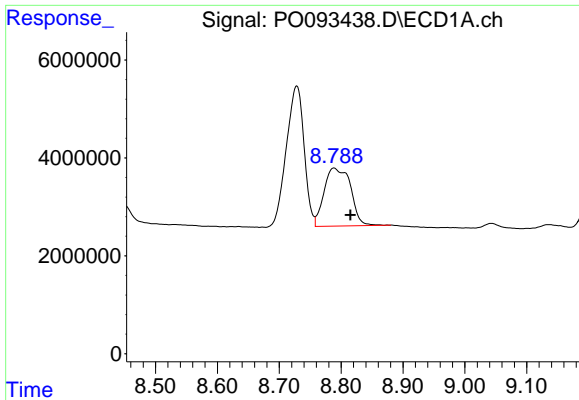
#38 AR-1262-3

R.T.: 8.729 min  
 Delta R.T.: 0.005 min  
 Response: 57591141  
 Conc: 341.01 ng/ml



#38 AR-1262-3

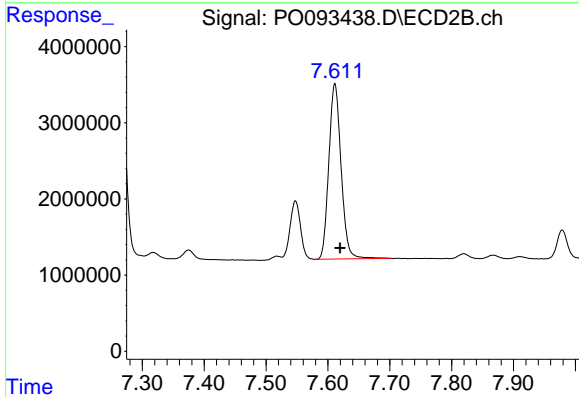
R.T.: 7.611 min  
 Delta R.T.: -0.008 min  
 Response: 31776781  
 Conc: 351.57 ng/ml



#39 AR-1262-4

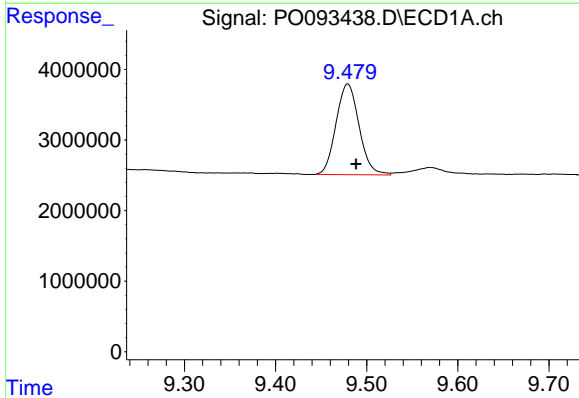
R.T.: 8.789 min  
Delta R.T.: -0.026 min  
Response: 35222224  
Conc: 393.27 ng/ml

Instrument :  
ECD\_O  
ClientSampleId :



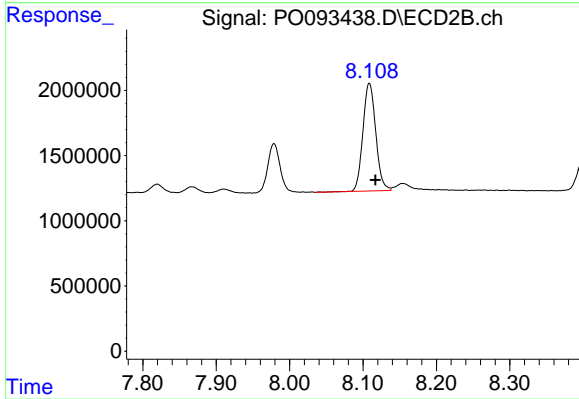
#39 AR-1262-4

R.T.: 7.611 min  
Delta R.T.: -0.008 min  
Response: 31776781  
Conc: 351.57 ng/ml



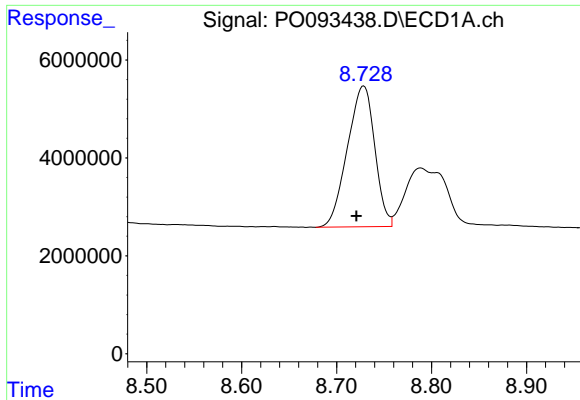
#40 AR-1262-5

R.T.: 9.479 min  
Delta R.T.: -0.009 min  
Response: 22640086  
Conc: 237.04 ng/ml



#40 AR-1262-5

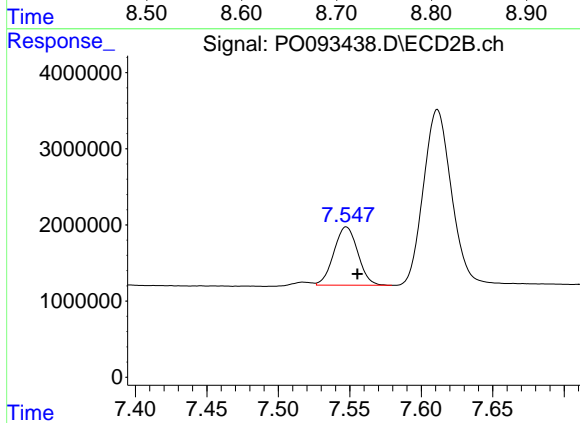
R.T.: 8.109 min  
Delta R.T.: -0.008 min  
Response: 10040572  
Conc: 245.34 ng/ml



#41 AR-1268-1

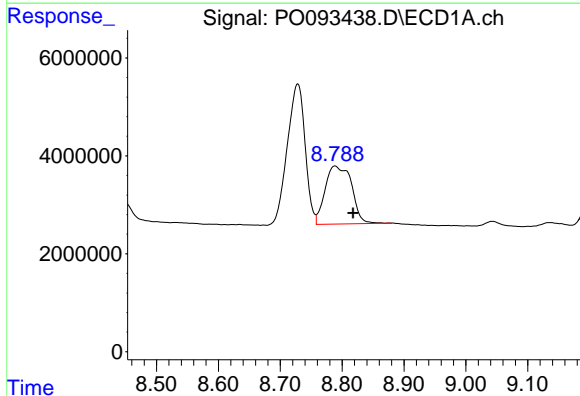
R.T.: 8.729 min  
 Delta R.T.: 0.008 min  
 Response: 57591141  
 Conc: 180.35 ng/ml

Instrument :  
 ECD\_O  
 ClientSampleId :



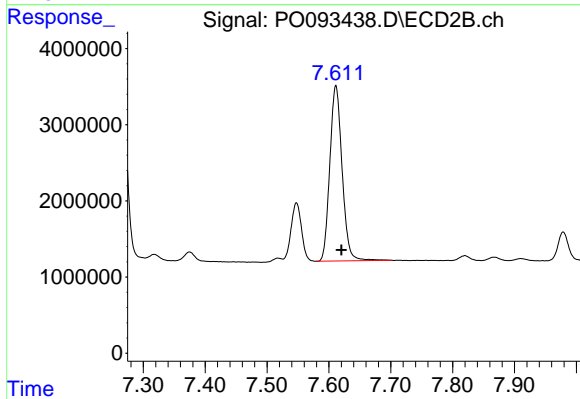
#41 AR-1268-1

R.T.: 7.548 min  
 Delta R.T.: -0.008 min  
 Response: 8938024  
 Conc: 57.11 ng/ml



#42 AR-1268-2

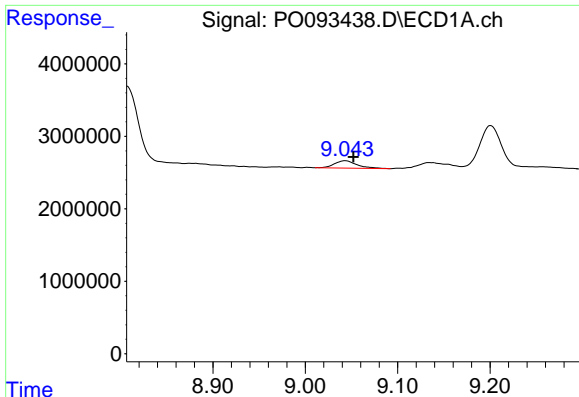
R.T.: 8.789 min  
 Delta R.T.: -0.029 min  
 Response: 35222224  
 Conc: 121.32 ng/ml



#42 AR-1268-2

R.T.: 7.611 min  
 Delta R.T.: -0.009 min  
 Response: 31776781  
 Conc: 227.60 ng/ml

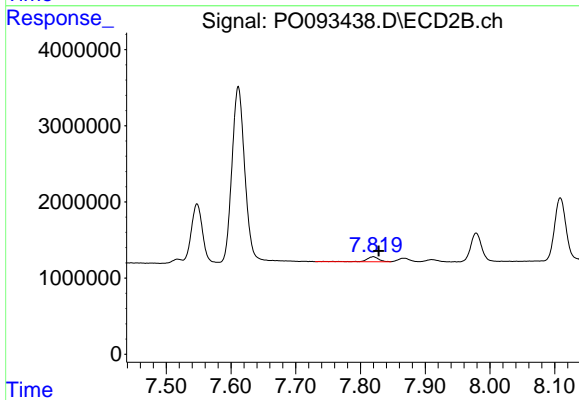




#43 AR-1268-3

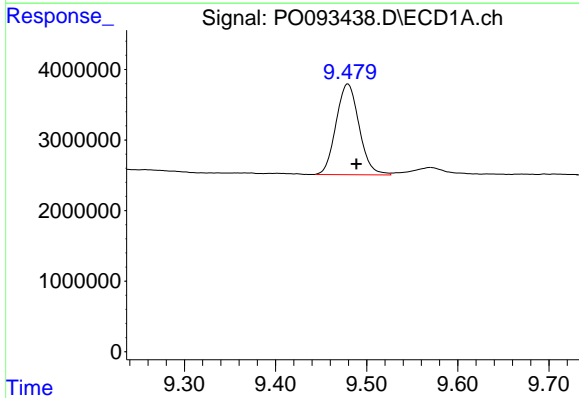
R.T.: 9.043 min  
 Delta R.T.: -0.009 min  
 Response: 1692571  
 Conc: 6.63 ng/ml

Instrument :  
 ECD\_O  
 ClientSampleId :



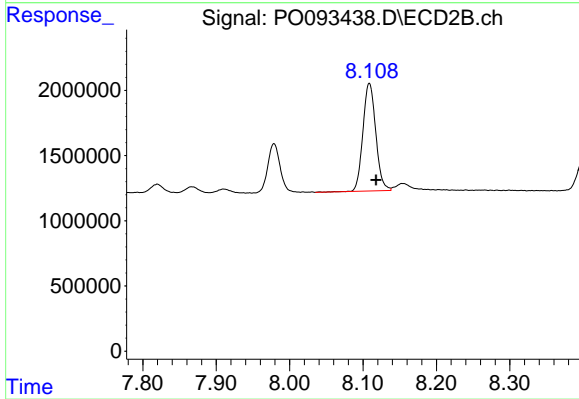
#43 AR-1268-3

R.T.: 7.820 min  
 Delta R.T.: -0.008 min  
 Response: 913077  
 Conc: 7.34 ng/ml



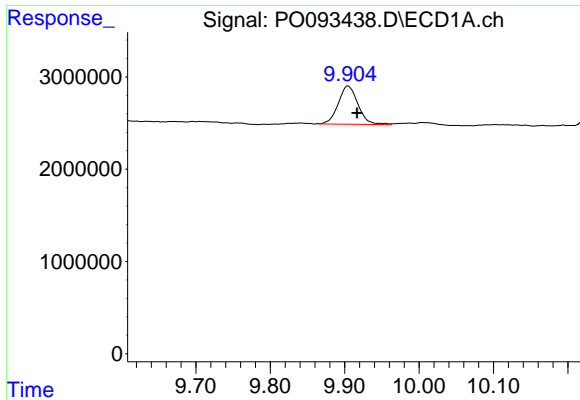
#44 AR-1268-4

R.T.: 9.479 min  
 Delta R.T.: -0.009 min  
 Response: 22640086  
 Conc: 212.00 ng/ml



#44 AR-1268-4

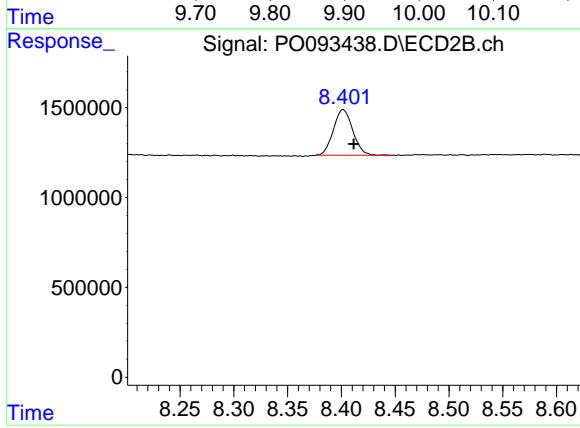
R.T.: 8.109 min  
 Delta R.T.: -0.009 min  
 Response: 10040572  
 Conc: 203.61 ng/ml



#45 AR-1268-5

R.T.: 9.905 min  
 Delta R.T.: -0.012 min  
 Response: 7639328  
 Conc: 9.52 ng/ml

Instrument :  
 ECD\_O  
 ClientSampleId :



#45 AR-1268-5

R.T.: 8.402 min  
 Delta R.T.: -0.010 min  
 Response: 3179446  
 Conc: 9.00 ng/ml