

Data Path : Z:\pestpcbsrv\HPCHEM1\ECD_0\Data\P0032421\
 Data File : P0076472.D
 Signal(s) : Signal #1: ECD1A.CH Signal #2: ECD2B.CH
 Acq On : 23 Mar 2021 20:54
 Operator : DD\AJ
 Sample : AR1242ICC500
 Misc :
 ALS Vial : 12 Sample Multiplier: 1

Instrument :
 ECD_0
 ClientSampleId :
 AR1242ICC500

Integration File signal 1: autoint1.e
 Integration File signal 2: autoint2.e
 Quant Time: Mar 24 02:18:02 2021
 Quant Method : Z:\pestpcbsrv\HPCHEM1\ECD_0\methods\P0032421.M
 Quant Title : GC EXTRACTABLES
 QLast Update : Wed Mar 24 02:17:37 2021
 Response via : Initial Calibration
 Integrator: ChemStation 6890 Scale Mode: Small noise peaks clipped

Volume Inj. : 2 µl
 Signal #1 Phase : ZB-MR1 Signal #2 Phase: ZB-MR2
 Signal #1 Info : 30Mx0.32mmx 0.50µ Signal #2 Info : 30M x 0.32mm x 0.25µm

Compound	RT#1	RT#2	Resp#1	Resp#2	ng/ml	ng/ml

System Monitoring Compounds						
1) SA Tetrachlo...	4.914	3.928	4749765	2832674	50.000	50.000
2) SA Decachlor...	10.887	9.187	3400277	2382080	50.000	50.000
Target Compounds						
16) L4 AR-1242-1	6.235	5.176	1135174	655825	500.000	500.000
17) L4 AR-1242-2	6.259	5.196	1721182	1164688	500.000	500.000
18) L4 AR-1242-3	6.325	5.386	1028784	539193	500.000	500.000
19) L4 AR-1242-4	6.432	5.481	819549	547261	500.000	500.000
20) L4 AR-1242-5	7.214	6.042	902323	667454	500.000	500.000

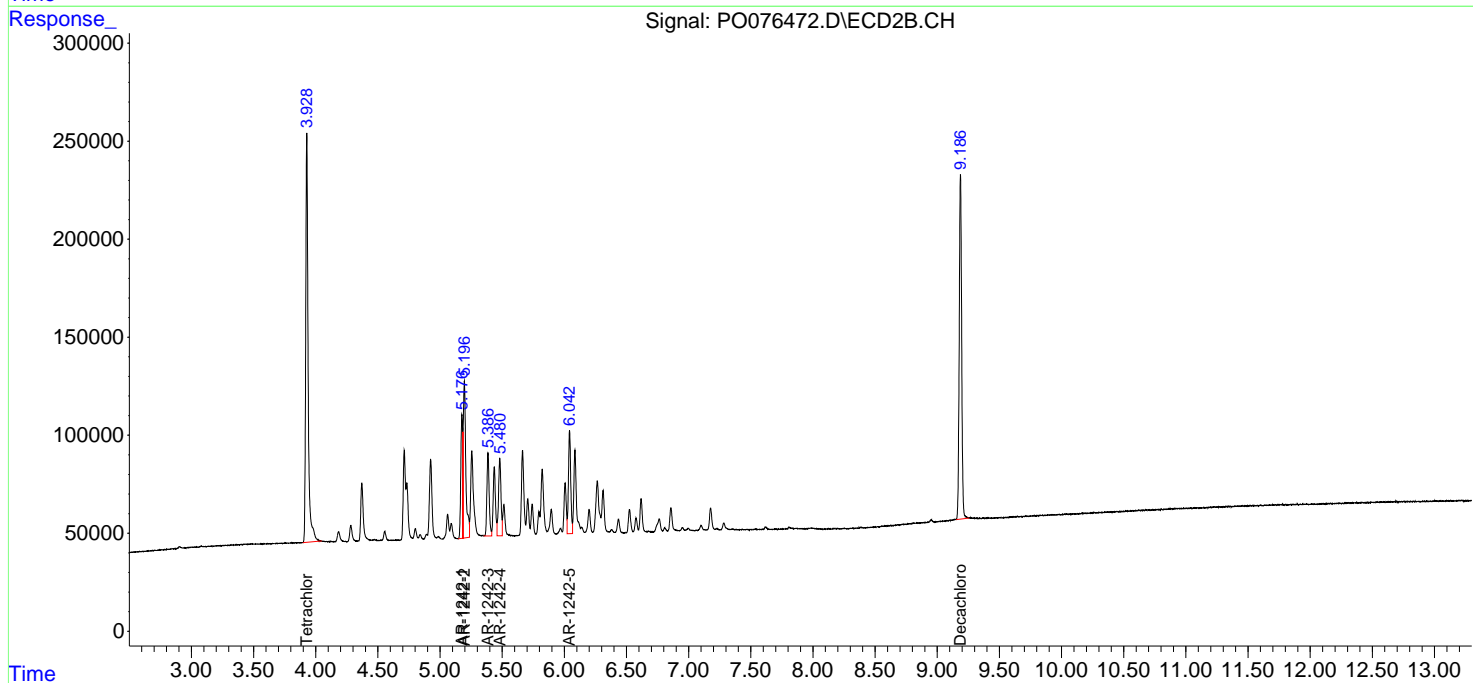
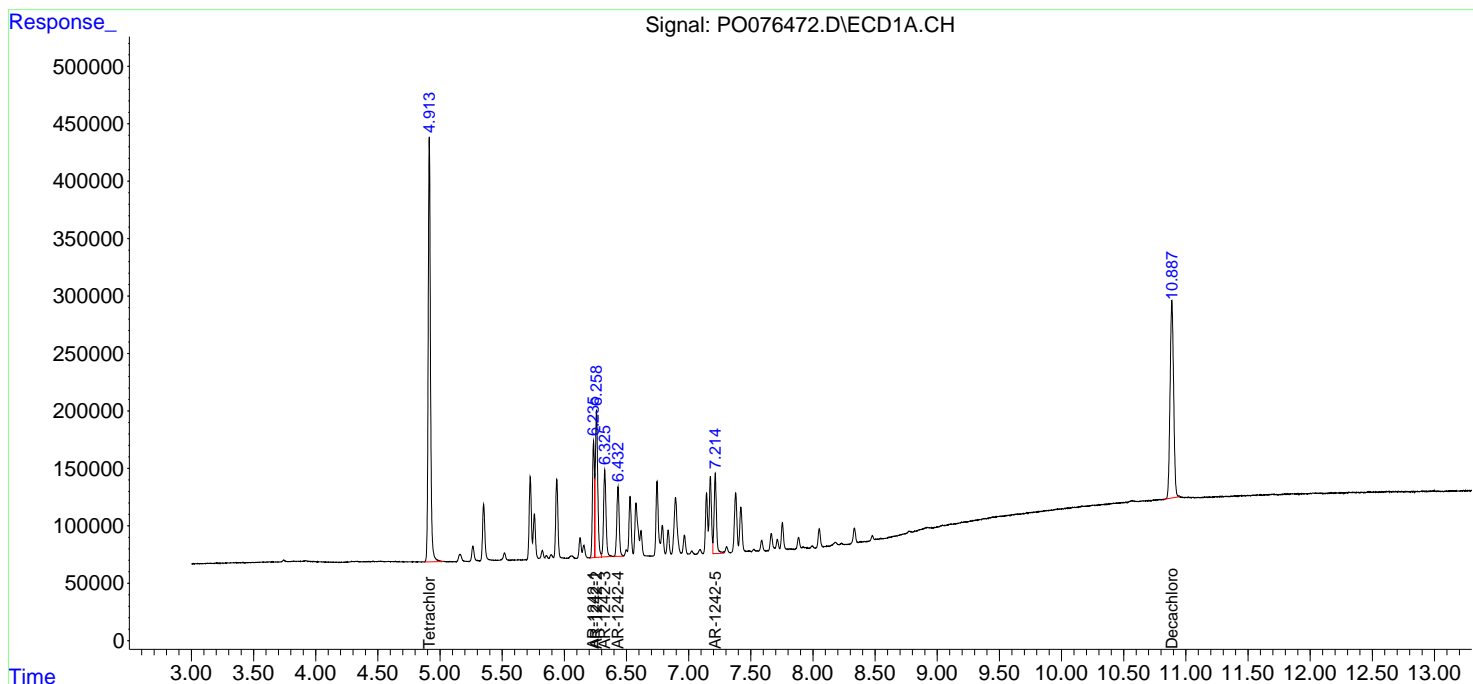
(f)=RT Delta > 1/2 Window (#)=Amounts differ by > 25% (m)=manual int.

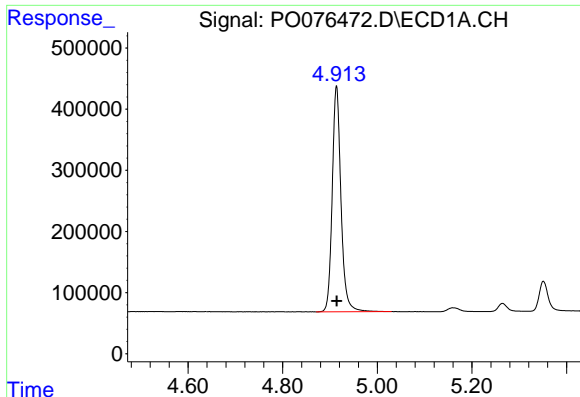
Data Path : Z:\pestpcbsrv\HPCHEM1\ECD_O\Data\P0032421\
 Data File : P0076472.D
 Signal(s) : Signal #1: ECD1A.CH Signal #2: ECD2B.CH
 Acq On : 23 Mar 2021 20:54
 Operator : DD\AJ
 Sample : AR1242ICC500
 Misc :
 ALS Vial : 12 Sample Multiplier: 1

Instrument :
 ECD_O
 ClientSampleId :
 AR1242ICC500

Integration File signal 1: autoint1.e
 Integration File signal 2: autoint2.e
 Quant Time: Mar 24 02:18:02 2021
 Quant Method : Z:\pestpcbsrv\HPCHEM1\ECD_O\methods\P0032421.M
 Quant Title : GC EXTRACTABLES
 QLast Update : Wed Mar 24 02:17:37 2021
 Response via : Initial Calibration
 Integrator: ChemStation 6890 Scale Mode: Small noise peaks clipped

Volume Inj. : 2 µl
 Signal #1 Phase : ZB-MR1 Signal #2 Phase: ZB-MR2
 Signal #1 Info : 30Mx0.32mmx 0.50µ Signal #2 Info : 30M x 0.32mm x 0.25µm

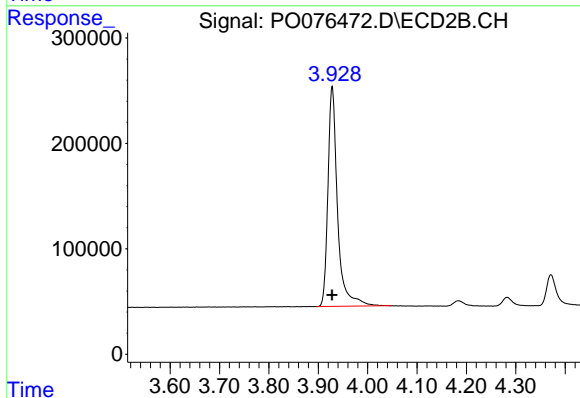




#1 Tetrachloro-m-xylene

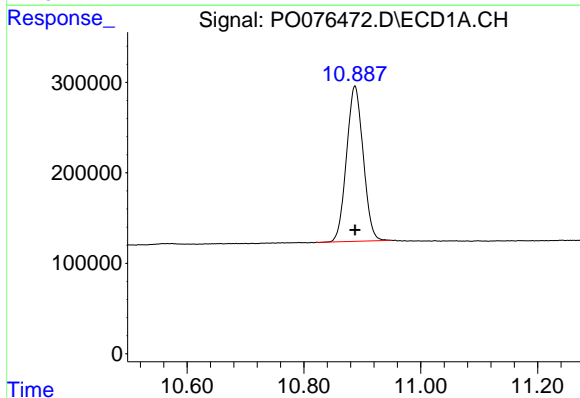
R.T.: 4.914 min
 Delta R.T.: 0.000 min
 Response: 4749765
 Conc: 50.00 ng/ml

Instrument :
 ECD_O
 ClientSampleId :
 AR1242ICC500



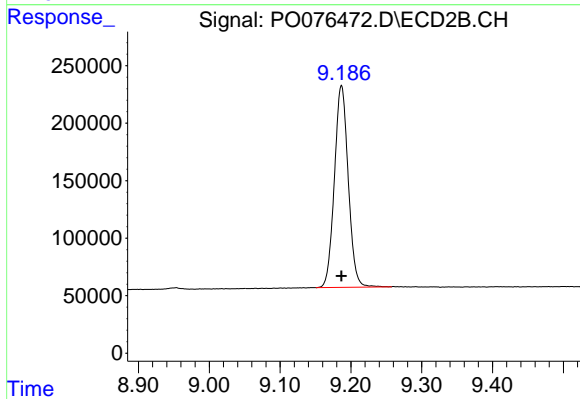
#1 Tetrachloro-m-xylene

R.T.: 3.928 min
 Delta R.T.: 0.000 min
 Response: 2832674
 Conc: 50.00 ng/ml



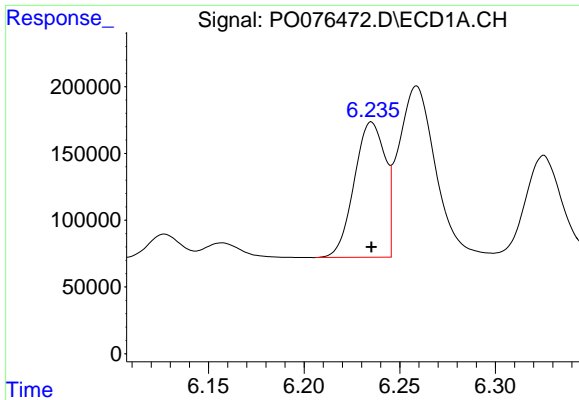
#2 Decachlorobiphenyl

R.T.: 10.887 min
 Delta R.T.: 0.000 min
 Response: 3400277
 Conc: 50.00 ng/ml



#2 Decachlorobiphenyl

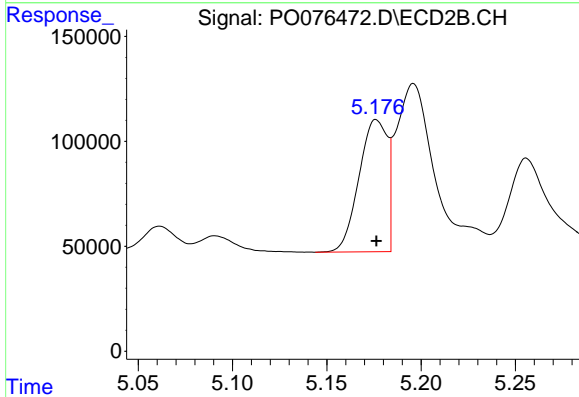
R.T.: 9.187 min
 Delta R.T.: 0.000 min
 Response: 2382080
 Conc: 50.00 ng/ml



#16 AR-1242-1

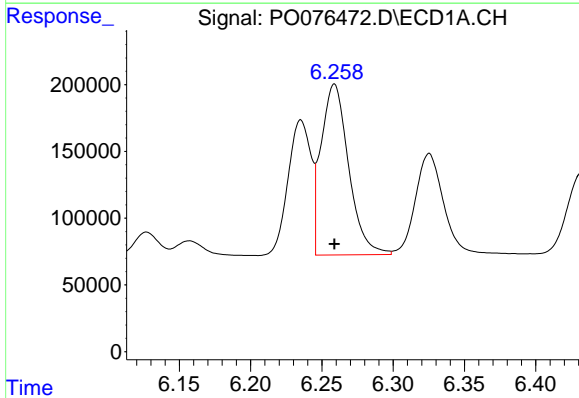
R.T.: 6.235 min
 Delta R.T.: 0.000 min
 Response: 1135174
 Conc: 500.00 ng/ml

Instrument :
 ECD_O
 ClientSampleId :
 AR1242ICC500



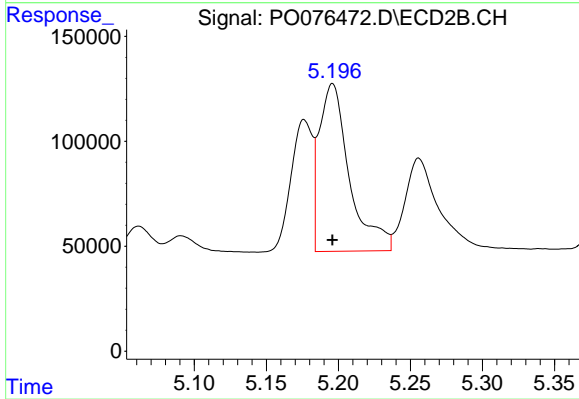
#16 AR-1242-1

R.T.: 5.176 min
 Delta R.T.: 0.000 min
 Response: 655825
 Conc: 500.00 ng/ml



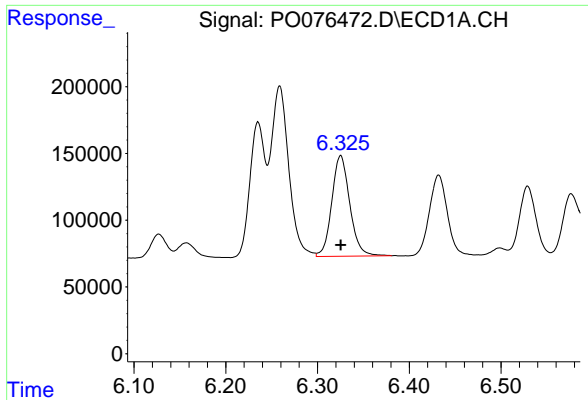
#17 AR-1242-2

R.T.: 6.259 min
 Delta R.T.: 0.000 min
 Response: 1721182
 Conc: 500.00 ng/ml



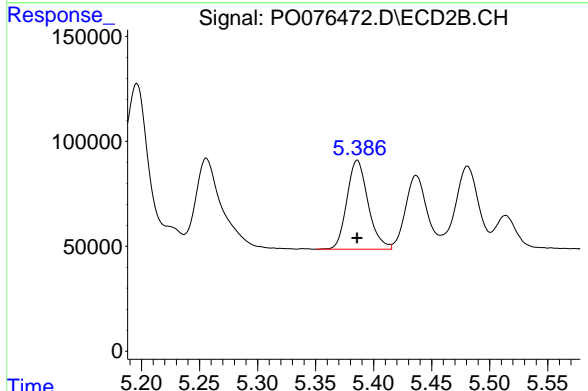
#17 AR-1242-2

R.T.: 5.196 min
 Delta R.T.: 0.000 min
 Response: 1164688
 Conc: 500.00 ng/ml

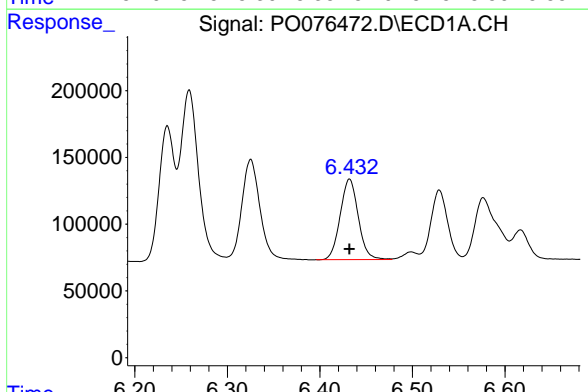


#18 AR-1242-3
 R.T.: 6.325 min
 Delta R.T.: 0.000 min
 Response: 1028784
 Conc: 500.00 ng/ml

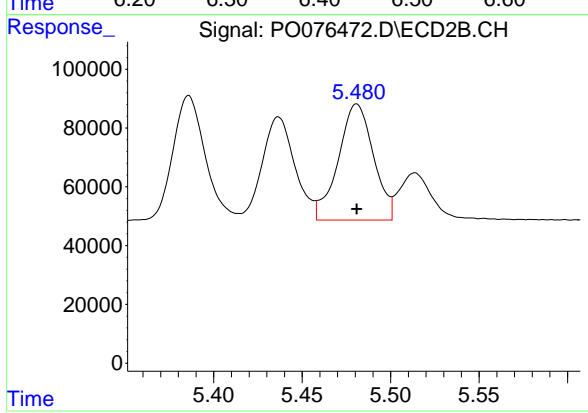
Instrument :
 ECD_O
ClientSampled :
 AR1242ICC500



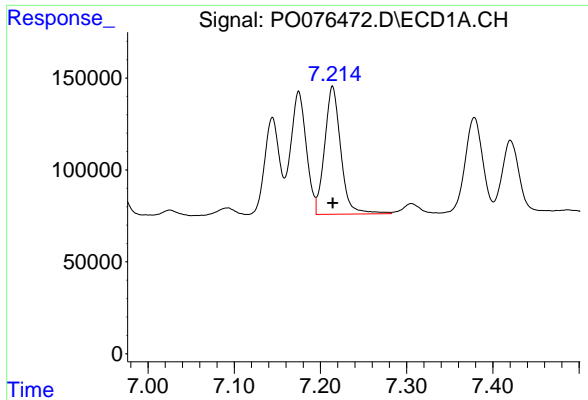
#18 AR-1242-3
 R.T.: 5.386 min
 Delta R.T.: 0.000 min
 Response: 539193
 Conc: 500.00 ng/ml



#19 AR-1242-4
 R.T.: 6.432 min
 Delta R.T.: 0.000 min
 Response: 819549
 Conc: 500.00 ng/ml



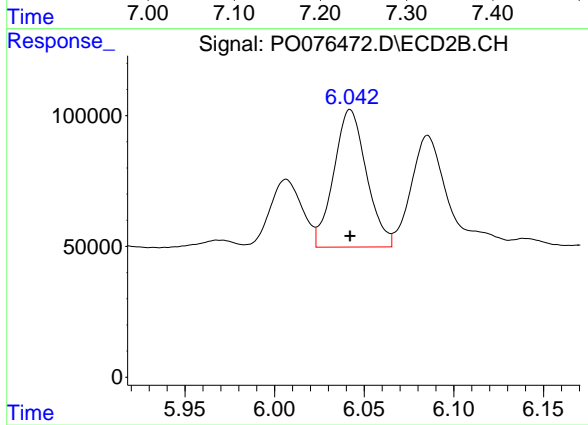
#19 AR-1242-4
 R.T.: 5.481 min
 Delta R.T.: 0.000 min
 Response: 547261
 Conc: 500.00 ng/ml



#20 AR-1242-5

R.T.: 7.214 min
Delta R.T.: 0.000 min
Response: 902323
Conc: 500.00 ng/ml

Instrument :
ECD_O
ClientSampleId :
AR1242ICC500



#20 AR-1242-5

R.T.: 6.042 min
Delta R.T.: 0.000 min
Response: 667454
Conc: 500.00 ng/ml