

Data Path : Z:\pestpcbsrv\HPCHEM1\ECD\_0\Data\P0032421\  
 Data File : P0076479.D  
 Signal(s) : Signal #1: ECD1A.CH Signal #2: ECD2B.CH  
 Acq On : 23 Mar 2021 22:54  
 Operator : DD\AJ  
 Sample : AR1248ICC050  
 Misc :  
 ALS Vial : 19 Sample Multiplier: 1

**Instrument :**  
 ECD\_0  
**ClientSampleId :**  
 AR1248ICC050

**Manual Integrations**  
**APPROVED**  
 Ankita  
 3/24/2021 3:59:42 PM

Integration File signal 1: autoint1.e  
 Integration File signal 2: autoint2.e  
 Quant Time: Mar 24 02:39:45 2021  
 Quant Method : Z:\pestpcbsrv\HPCHEM1\ECD\_0\methods\P0032421.M  
 Quant Title : GC EXTRACTABLES  
 QLast Update : Wed Mar 24 02:30:06 2021  
 Response via : Initial Calibration  
 Integrator: ChemStation 6890 Scale Mode: Small noise peaks clipped

Volume Inj. : 2 µl  
 Signal #1 Phase : ZB-MR1 Signal #2 Phase: ZB-MR2  
 Signal #1 Info : 30Mx0.32mmx 0.50µ Signal #2 Info : 30M x 0.32mm x 0.25µm

Compound	RT#1	RT#2	Resp#1	Resp#2	ng/ml	ng/ml
-----						
System Monitoring Compounds						
1) SA Tetrachlo...	4.914	3.928	437889	291197	4.677	5.184
2) SA Decachlor...	10.887	9.186	319738	243647	4.763	5.141
Target Compounds						
21) L5 AR-1248-1	6.236	5.177	80307	53052	48.516	52.934
22) L5 AR-1248-2	6.529	5.436	125559	90229	51.474m	55.417
23) L5 AR-1248-3	6.746	5.481	142458	92047	49.725	55.764
24) L5 AR-1248-4	7.176	5.664	151651	107630	48.566	55.362
25) L5 AR-1248-5	7.214	6.085	148799	93221	47.786	50.456m
-----						

(f)=RT Delta > 1/2 Window (#)=Amounts differ by > 25% (m)=manual int.

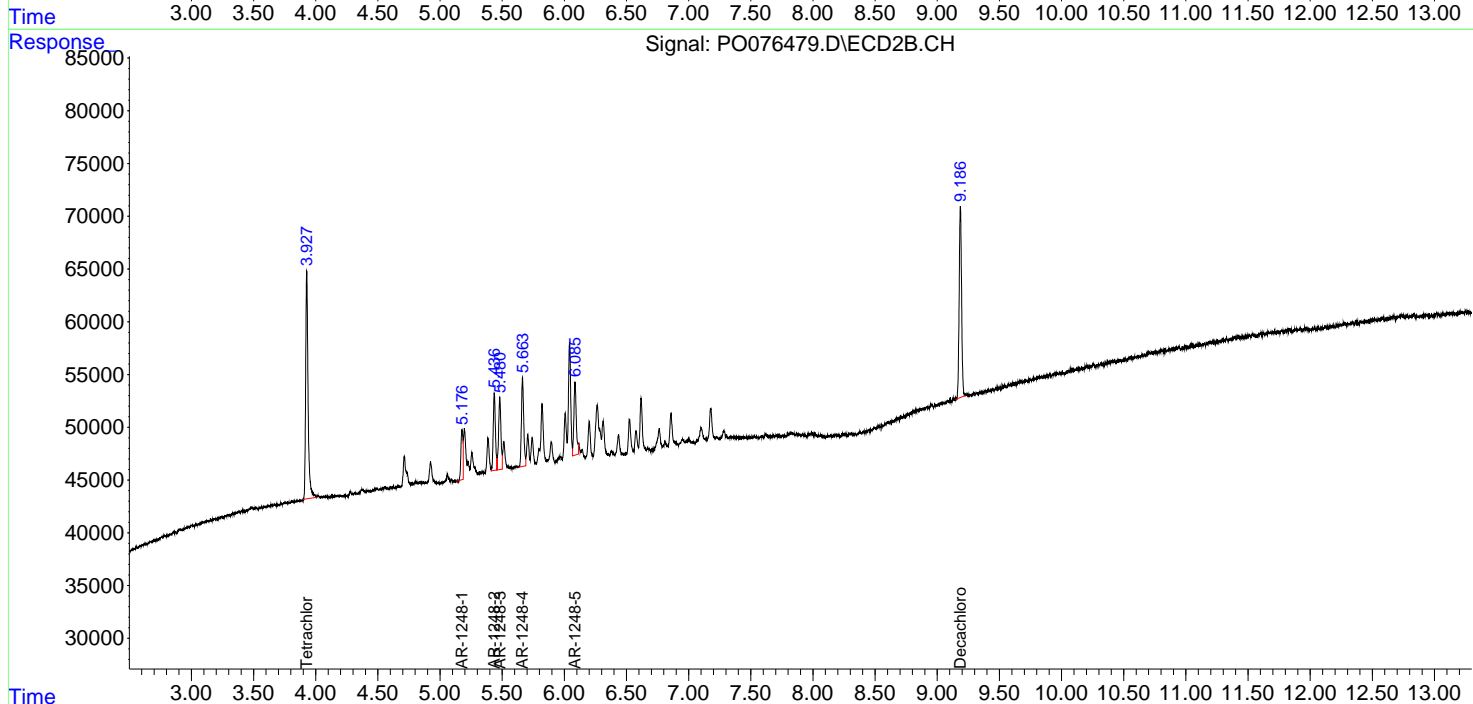
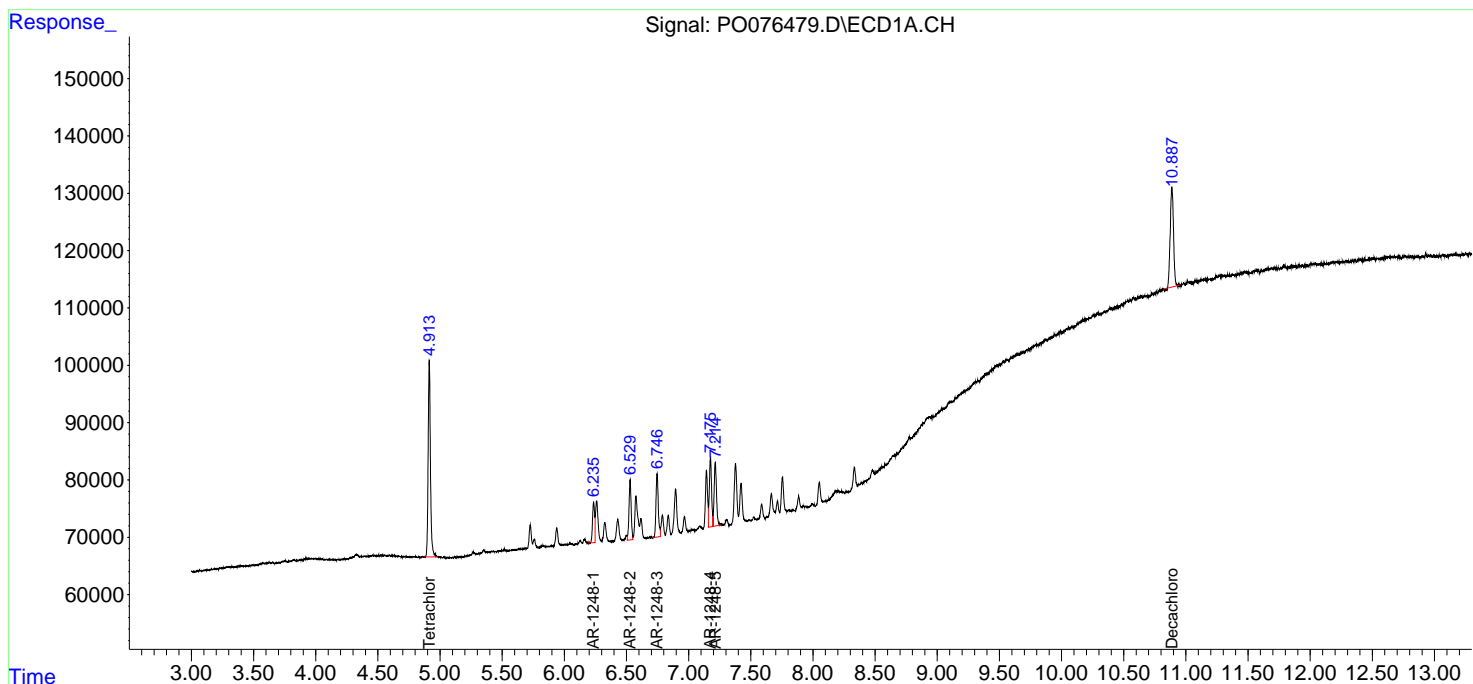
Data Path : Z:\pestpcbsrv\HPCHEM1\ECD\_0\Data\P0032421\  
 Data File : P0076479.D  
 Signal(s) : Signal #1: ECD1A.CH Signal #2: ECD2B.CH  
 Acq On : 23 Mar 2021 22:54  
 Operator : DD\AJ  
 Sample : AR1248ICC050  
 Misc :  
 ALS Vial : 19 Sample Multiplier: 1

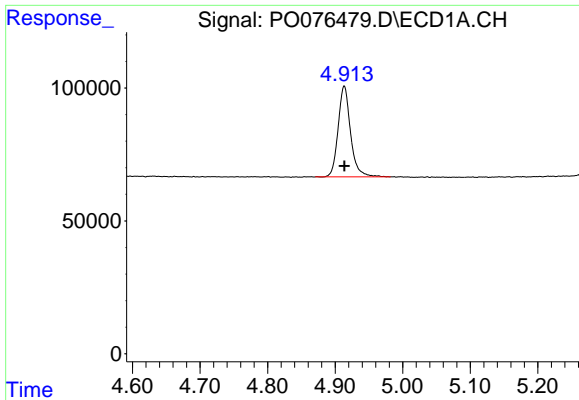
**Instrument :**  
 ECD\_O  
**Client Sampled :**  
 AR1248ICC050

**Manual Integrations**  
**APPROVED**  
 Ankita  
 3/24/2021 3:59:42 PM

Integration File signal 1: autoint1.e  
 Integration File signal 2: autoint2.e  
 Quant Time: Mar 24 02:39:45 2021  
 Quant Method : Z:\pestpcbsrv\HPCHEM1\ECD\_0\methods\P0032421.M  
 Quant Title : GC EXTRACTABLES  
 QLast Update : Wed Mar 24 02:30:06 2021  
 Response via : Initial Calibration  
 Integrator: ChemStation 6890 Scale Mode: Small noise peaks clipped

Volume Inj. : 2 µl  
 Signal #1 Phase : ZB-MR1 Signal #2 Phase: ZB-MR2  
 Signal #1 Info : 30Mx0.32mmx 0.50µ Signal #2 Info : 30M x 0.32mm x 0.25µm

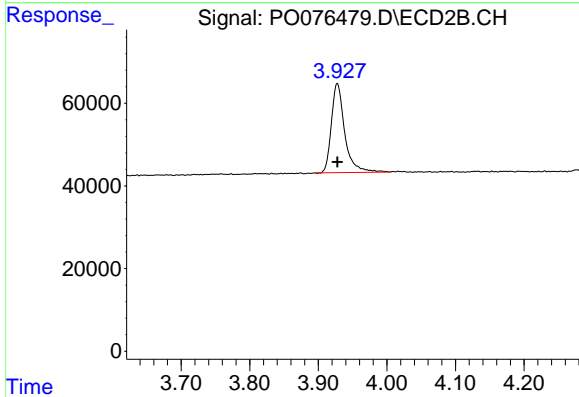




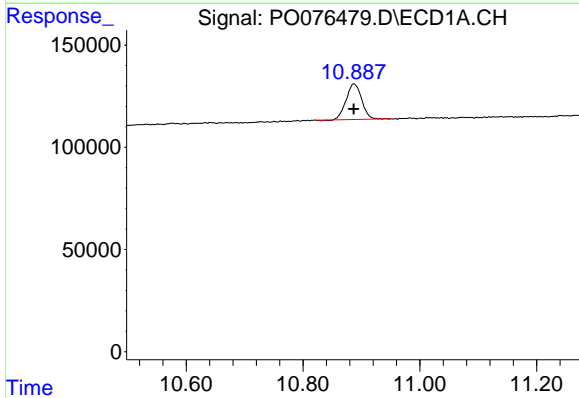
#1 Tetrachloro-m-xylene  
 R.T.: 4.914 min  
 Delta R.T.: 0.000 min  
 Response: 437889  
 Conc: 4.68 ng/ml

Instrument :  
 ECD\_O  
 ClientSampleId :  
 AR1248ICC050

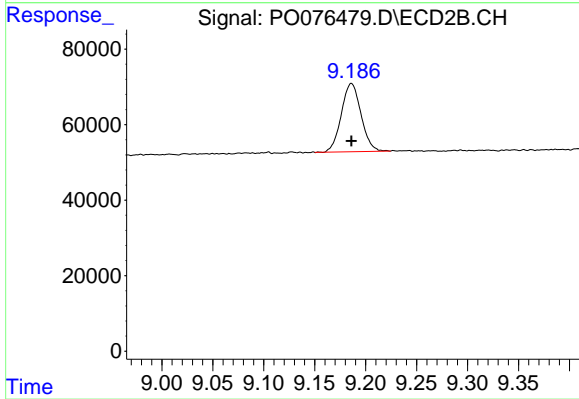
Manual Integrations  
 APPROVED  
 Ankita  
 3/24/2021 3:59:42 PM



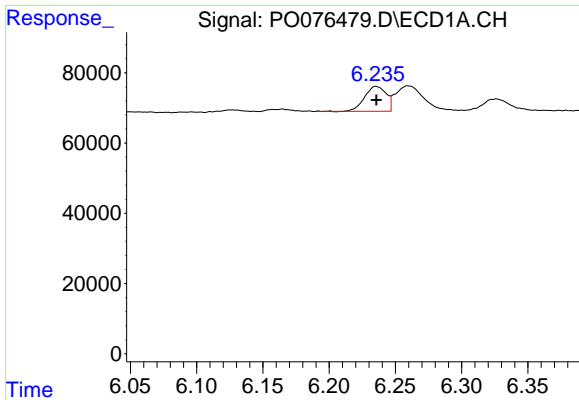
#1 Tetrachloro-m-xylene  
 R.T.: 3.928 min  
 Delta R.T.: 0.000 min  
 Response: 291197  
 Conc: 5.18 ng/ml



#2 Decachlorobiphenyl  
 R.T.: 10.887 min  
 Delta R.T.: 0.000 min  
 Response: 319738  
 Conc: 4.76 ng/ml



#2 Decachlorobiphenyl  
 R.T.: 9.186 min  
 Delta R.T.: 0.000 min  
 Response: 243647  
 Conc: 5.14 ng/ml

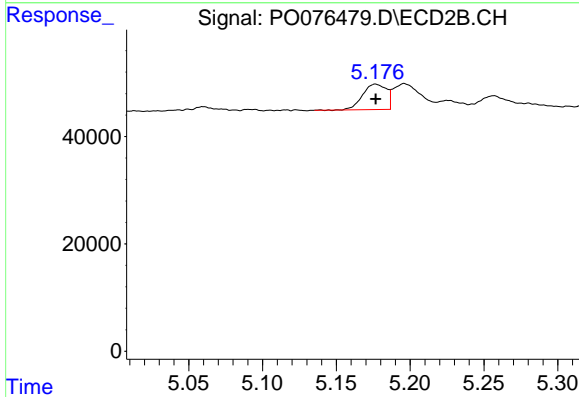


#21 AR-1248-1

R.T.: 6.236 min  
 Delta R.T.: 0.000 min  
 Response: 80307  
 Conc: 48.52 ng/ml

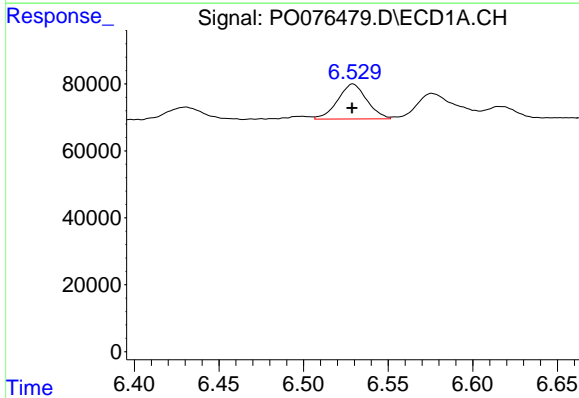
**Instrument :**  
 ECD\_O  
**ClientSampleId :**  
 AR1248ICC050

**Manual Integrations**  
**APPROVED**  
 Ankita  
 3/24/2021 3:59:42 PM



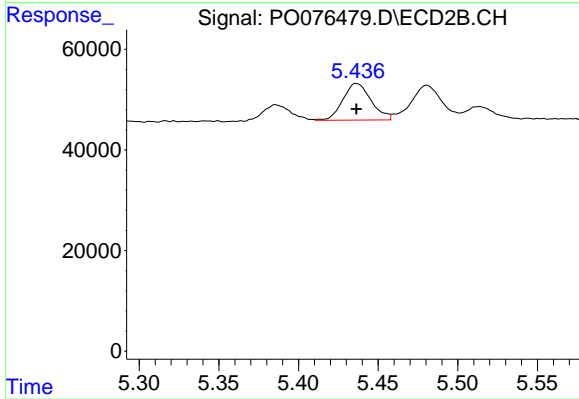
#21 AR-1248-1

R.T.: 5.177 min  
 Delta R.T.: 0.000 min  
 Response: 53052  
 Conc: 52.93 ng/ml



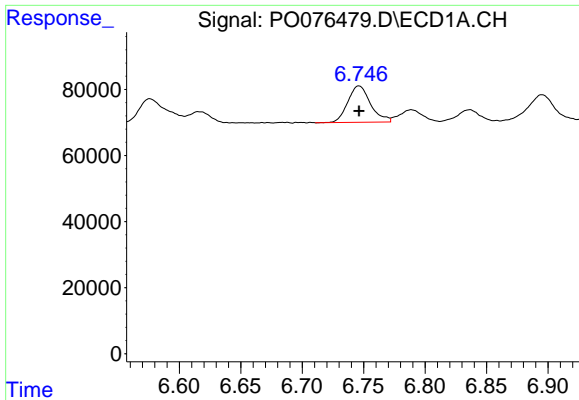
#22 AR-1248-2

R.T.: 6.529 min  
 Delta R.T.: 0.000 min  
 Response: 125559  
 Conc: 51.47 ng/ml m



#22 AR-1248-2

R.T.: 5.436 min  
 Delta R.T.: 0.000 min  
 Response: 90229  
 Conc: 55.42 ng/ml



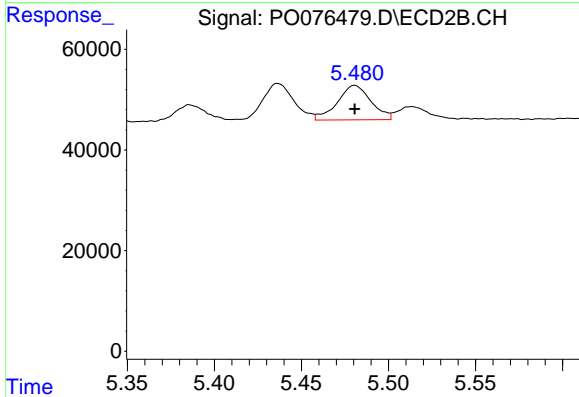
#23 AR-1248-3

R.T.: 6.746 min  
 Delta R.T.: 0.000 min  
 Response: 142458  
 Conc: 49.73 ng/ml

Instrument :  
 ECD\_O  
 ClientSampleId :  
 AR1248ICC050

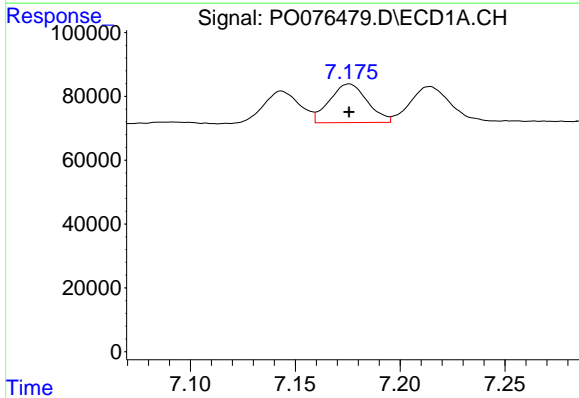
Manual Integrations  
 APPROVED

Ankita  
 3/24/2021 3:59:42 PM



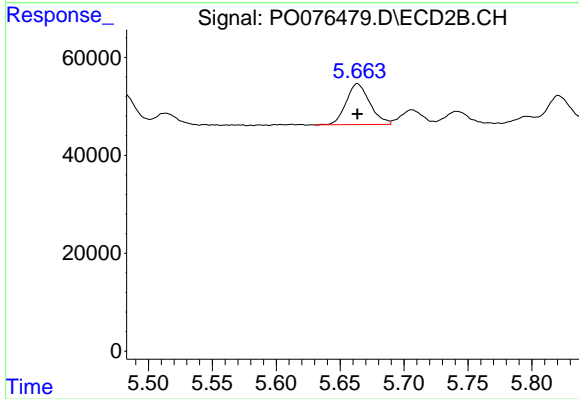
#23 AR-1248-3

R.T.: 5.481 min  
 Delta R.T.: 0.000 min  
 Response: 92047  
 Conc: 55.76 ng/ml



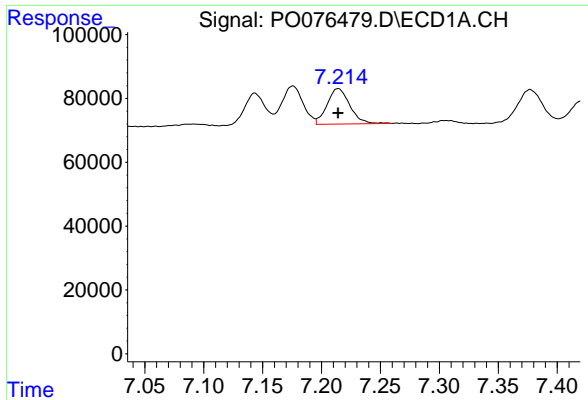
#24 AR-1248-4

R.T.: 7.176 min  
 Delta R.T.: 0.000 min  
 Response: 151651  
 Conc: 48.57 ng/ml



#24 AR-1248-4

R.T.: 5.664 min  
 Delta R.T.: 0.000 min  
 Response: 107630  
 Conc: 55.36 ng/ml



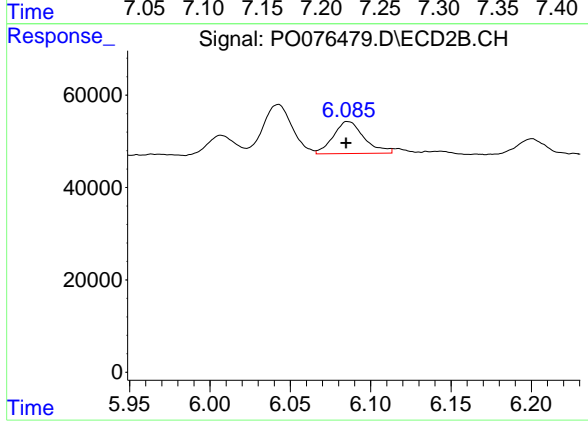
#25 AR-1248-5

R.T.: 7.214 min  
Delta R.T.: 0.000 min  
Response: 148799  
Conc: 47.79 ng/ml

Instrument :  
ECD\_O  
ClientSampleId :  
AR1248ICC050

Manual Integrations  
APPROVED

Ankita  
3/24/2021 3:59:42 PM



#25 AR-1248-5

R.T.: 6.085 min  
Delta R.T.: 0.000 min  
Response: 93221  
Conc: 50.46 ng/ml m