

Data Path : Z:\pestpcbsrv\HPCHEM1\ECD\_O\Data\P0032423\  
 Data File : P0093529.D  
 Signal(s) : Signal #1: ECD1A.ch Signal #2: ECD2B.ch  
 Acq On : 24 Mar 2023 23:49  
 Operator : YP/AJ  
 Sample : 02052-04  
 Misc :  
 ALS Vial : 26 Sample Multiplier: 1

Instrument :  
 ECD\_O  
 ClientSampleId :  
 AUD-1700

Integration File signal 1: autoint1.e  
 Integration File signal 2: autoint2.e  
 Quant Time: Mar 26 21:33:17 2023  
 Quant Method : Z:\pestpcbsrv\HPCHEM1\ECD\_O\methods\P0031323.M  
 Quant Title : GC EXTRACTABLES  
 QLast Update : Tue Mar 14 05:32:59 2023  
 Response via : Initial Calibration  
 Integrator: ChemStation

Volume Inj. : 2 µl  
 Signal #1 Phase : ZB-MR1 Signal #2 Phase: ZB-MR2  
 Signal #1 Info : 30Mx0.32mmx 0.50µ Signal #2 Info : 30M x 0.32mm x 0.25µm

Compound	RT#1	RT#2	Resp#1	Resp#2	ng/ml	ng/ml
-----						
System Monitoring Compounds						
1) SA Tetrachlo...	4.425	3.645	62845781	22413072	20.069	19.872
2) SA Decachlor...	10.252	8.669	31278583	14017105	14.452	14.316

Target Compounds

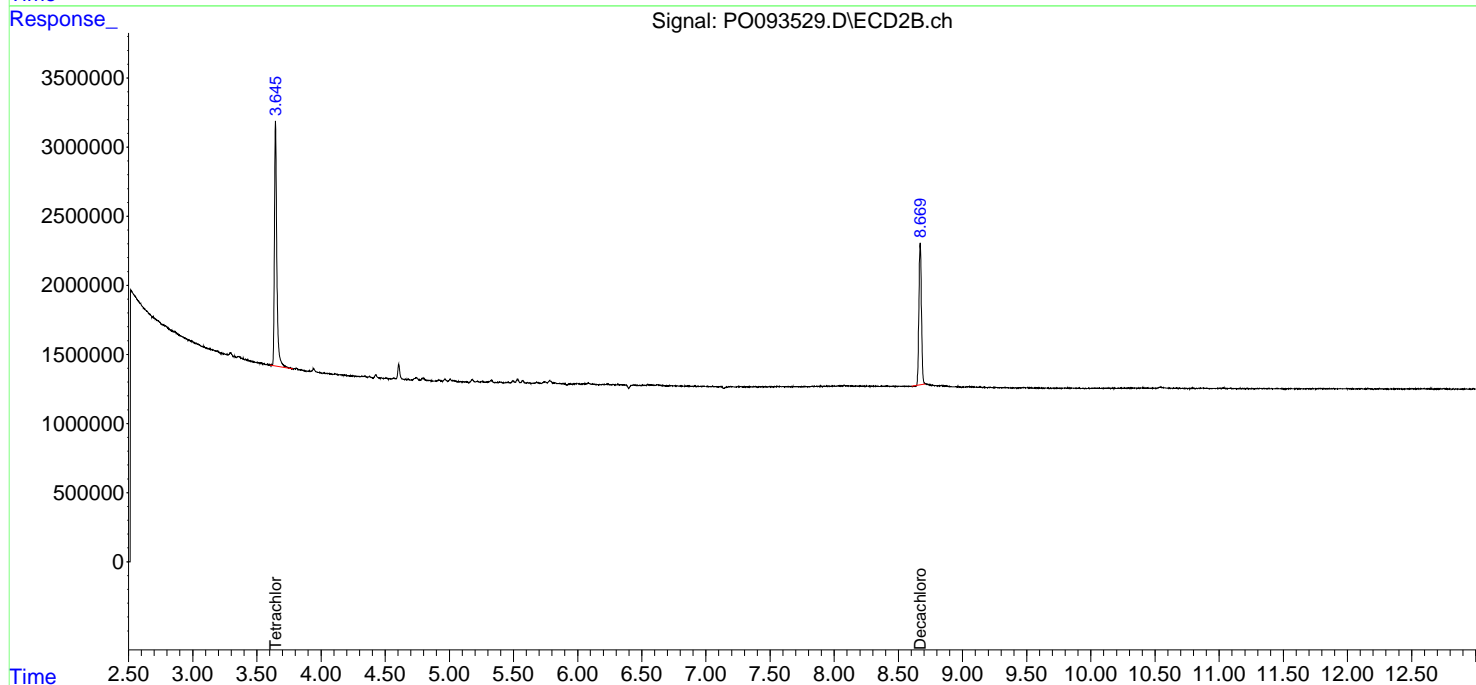
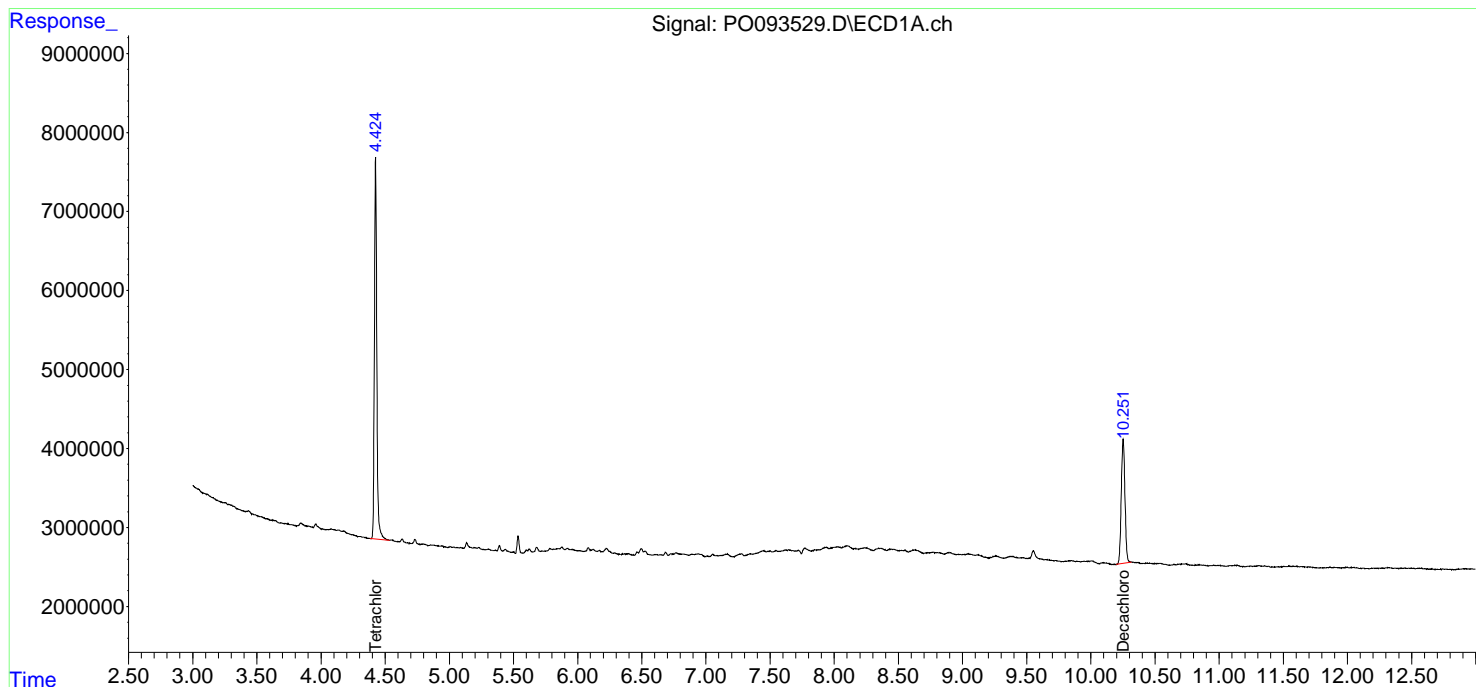
(f)=RT Delta > 1/2 Window (#)=Amounts differ by > 25% (m)=manual int.

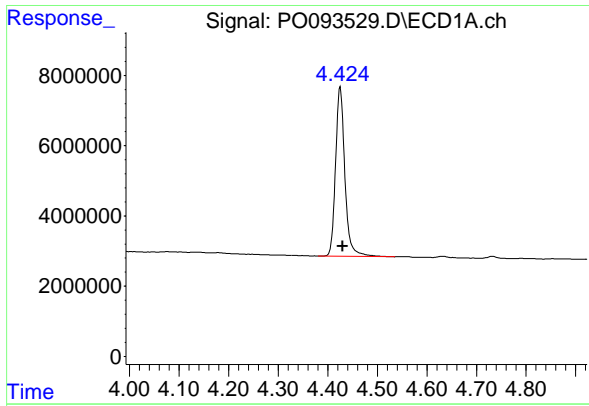
Data Path : Z:\pestpcbsrv\HPCHEM1\ECD\_O\Data\PO032423\  
Data File : PO093529.D  
Signal(s) : Signal #1: ECD1A.ch Signal #2: ECD2B.ch  
Acq On : 24 Mar 2023 23:49  
Operator : YP/AJ  
Sample : 02052-04  
Misc :  
ALS Vial : 26 Sample Multiplier: 1

Instrument :  
ECD\_O  
ClientSampleId :  
AUD-1700

Integration File signal 1: autoint1.e  
Integration File signal 2: autoint2.e  
Quant Time: Mar 26 21:33:17 2023  
Quant Method : Z:\pestpcbsrv\HPCHEM1\ECD\_O\methods\PO031323.M  
Quant Title : GC EXTRACTABLES  
QLast Update : Tue Mar 14 05:32:59 2023  
Response via : Initial Calibration  
Integrator: ChemStation

Volume Inj. : 2 µl  
Signal #1 Phase : ZB-MR1 Signal #2 Phase: ZB-MR2  
Signal #1 Info : 30Mx0.32mmx 0.50µm Signal #2 Info : 30M x 0.32mm x 0.25µm

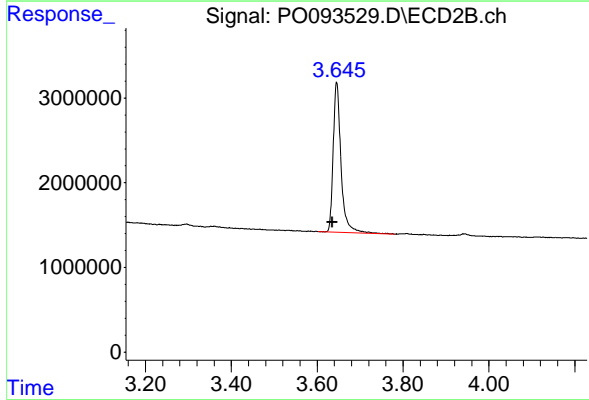




#1 Tetrachloro-m-xylene

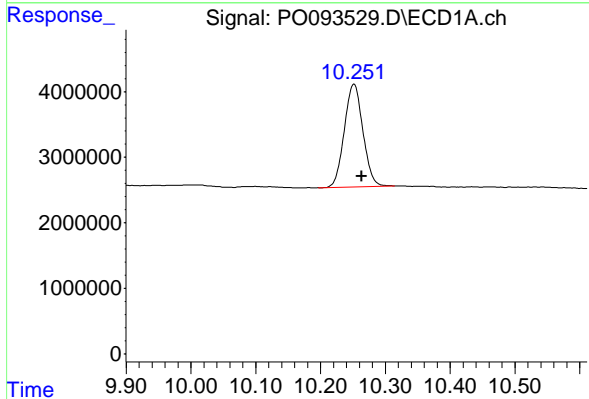
R.T.: 4.425 min  
 Delta R.T.: -0.005 min  
 Response: 62845781  
 Conc: 20.07 ng/ml

Instrument :  
 ECD\_O  
 ClientSampleId :  
 AUD-1700



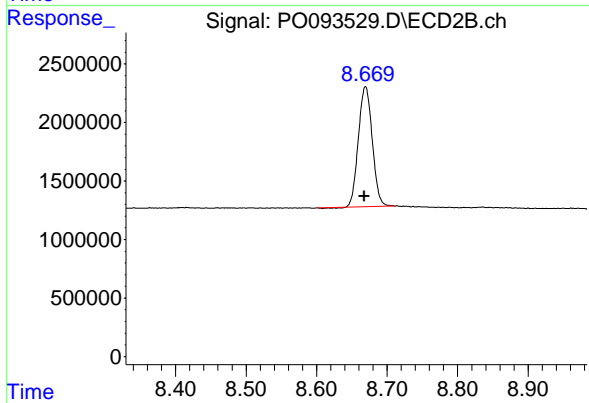
#1 Tetrachloro-m-xylene

R.T.: 3.645 min  
 Delta R.T.: 0.011 min  
 Response: 22413072  
 Conc: 19.87 ng/ml



#2 Decachlorobiphenyl

R.T.: 10.252 min  
 Delta R.T.: -0.011 min  
 Response: 31278583  
 Conc: 14.45 ng/ml



#2 Decachlorobiphenyl

R.T.: 8.669 min  
 Delta R.T.: 0.001 min  
 Response: 14017105  
 Conc: 14.32 ng/ml