

Data Path : Z:\pestpcbsrv\HPCHEM1\ECD_0\Data\P0032621\
 Data File : P0076555.D
 Signal(s) : Signal #1: ECD1A.CH Signal #2: ECD2B.CH
 Acq On : 25 Mar 2021 15:17
 Operator : DD\AJ
 Sample : M1802-08MSD
 Misc :
 ALS Vial : 16 Sample Multiplier: 1

Instrument :
 ECD_0
 ClientSampleId :
 SB-4D-(4.5-5)MSD

Integration File signal 1: autoint1.e
 Integration File signal 2: autoint2.e
 Quant Time: Mar 25 18:43:26 2021
 Quant Method : Z:\pestpcbsrv\HPCHEM1\ECD_0\methods\P0032421.M
 Quant Title : GC EXTRACTABLES
 QLast Update : Wed Mar 24 05:38:14 2021
 Response via : Initial Calibration
 Integrator: ChemStation 6890 Scale Mode: Small noise peaks clipped

Volume Inj. : 2 µl
 Signal #1 Phase : ZB-MR2 Signal #2 Phase: ZB-MR2
 Signal #1 Info : 30Mx0.32mmx 0.50µ Signal #2 Info : 30M x 0.32mm x 0.25µm

Compound	RT#1	RT#2	Resp#1	Resp#2	ng/ml	ng/ml

System Monitoring Compounds						
1) SA Tetrachlo...	4.913	3.927	2097944	1170469	23.955	21.338
2) SA Decachlor...	10.888	9.184	1808074	1164729	27.776	24.717
Target Compounds						
3) L1 AR-1016-1	6.234	5.174	1690762	933515	625.626	566.788
4) L1 AR-1016-2	6.258	5.193	2572419	1664054	625.757	573.417
5) L1 AR-1016-3	6.324	5.383	1492827	773681	618.698	579.448
6) L1 AR-1016-4	6.431	5.434	1200247	665123	619.261	592.542
7) L1 AR-1016-5	6.745	5.661	1239624	825460	636.453	599.465
31) L7 AR-1260-1	7.920	6.751	2313151	1669865	673.137	651.559
32) L7 AR-1260-2	8.186	6.949	2881674	2036067	710.721	656.522
33) L7 AR-1260-3	8.551	7.101	1740504	1882881	576.109	640.925
34) L7 AR-1260-4	8.781	7.583	2108673	1374565	605.103	576.742
35) L7 AR-1260-5	9.103	7.830	4090076	3233624	605.233	569.969

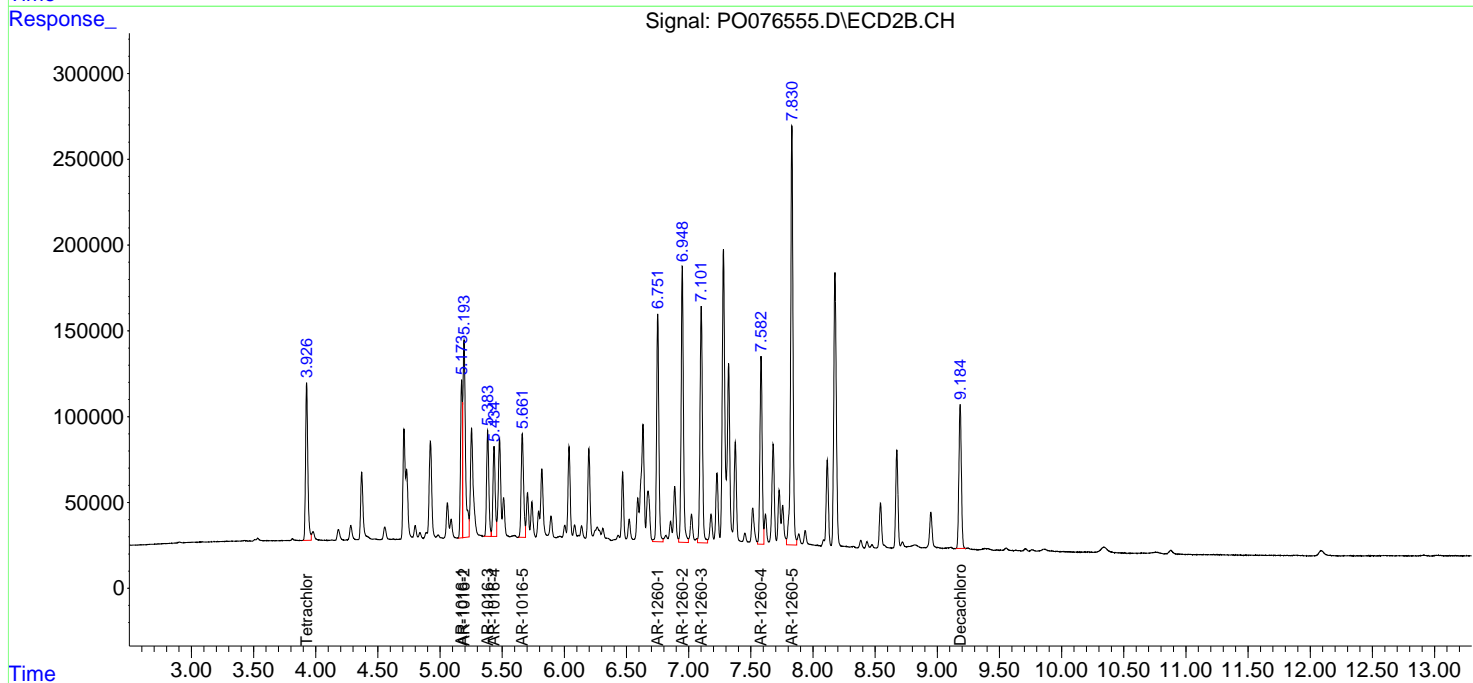
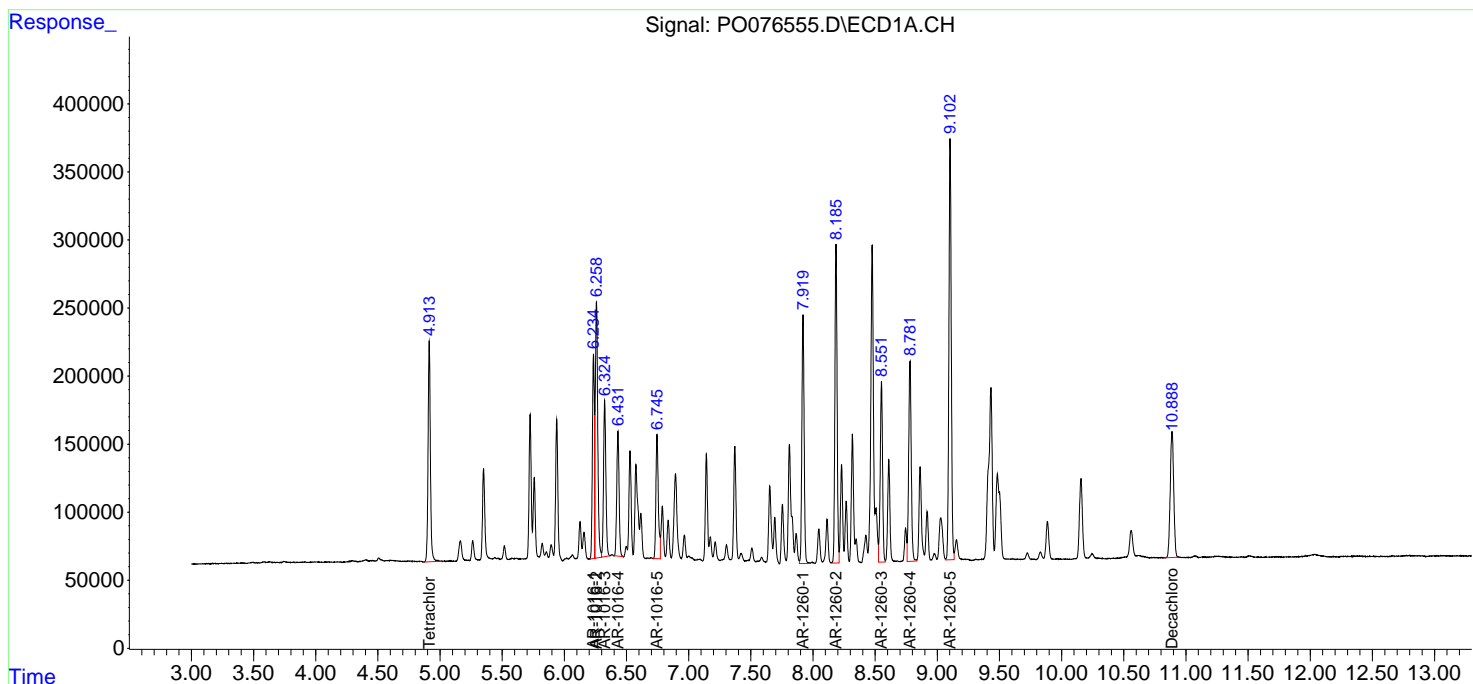
(f)=RT Delta > 1/2 Window (#)=Amounts differ by > 25% (m)=manual int.

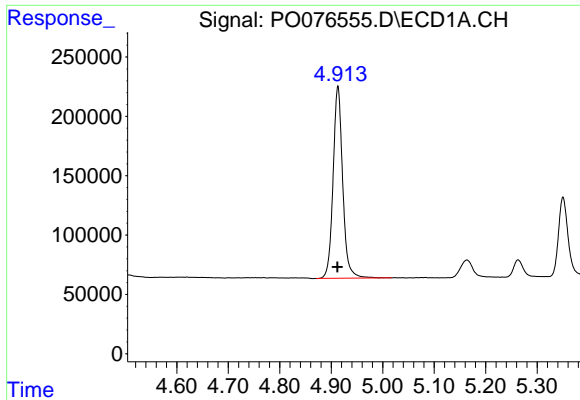
Data Path : Z:\pestpcbsrv\HPCHEM1\ECD_0\Data\P0032621\
 Data File : P0076555.D
 Signal(s) : Signal #1: ECD1A.CH Signal #2: ECD2B.CH
 Acq On : 25 Mar 2021 15:17
 Operator : DD\AJ
 Sample : M1802-08MSD
 Misc :
 ALS Vial : 16 Sample Multiplier: 1

Instrument :
 ECD_O
 ClientSampled :
 SB-4D-(4.5-5)MSD

Integration File signal 1: autoint1.e
 Integration File signal 2: autoint2.e
 Quant Time: Mar 25 18:43:26 2021
 Quant Method : Z:\pestpcbsrv\HPCHEM1\ECD_0\methods\P0032421.M
 Quant Title : GC EXTRACTABLES
 QLast Update : Wed Mar 24 05:38:14 2021
 Response via : Initial Calibration
 Integrator: ChemStation 6890 Scale Mode: Small noise peaks clipped

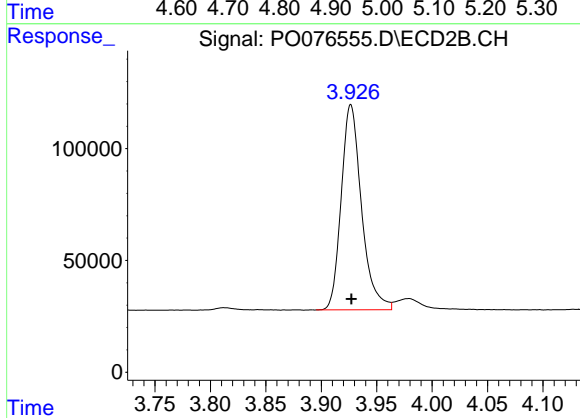
Volume Inj. : 2 µl
 Signal #1 Phase : ZB-MR1 Signal #2 Phase: ZB-MR2
 Signal #1 Info : 30Mx0.32mmx 0.50µ Signal #2 Info : 30M x 0.32mm x 0.25µm



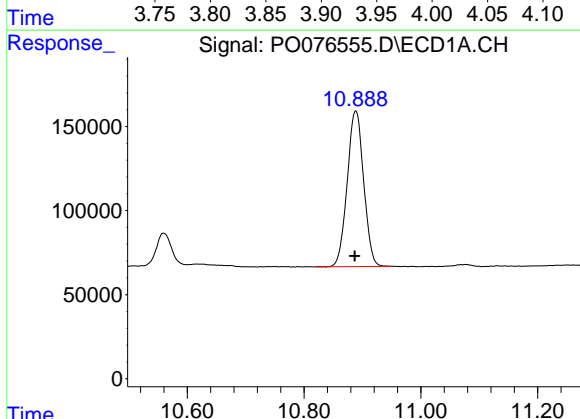


#1 Tetrachloro-m-xylene
 R.T.: 4.913 min
 Delta R.T.: 0.001 min
 Response: 2097944
 Conc: 23.95 ng/ml

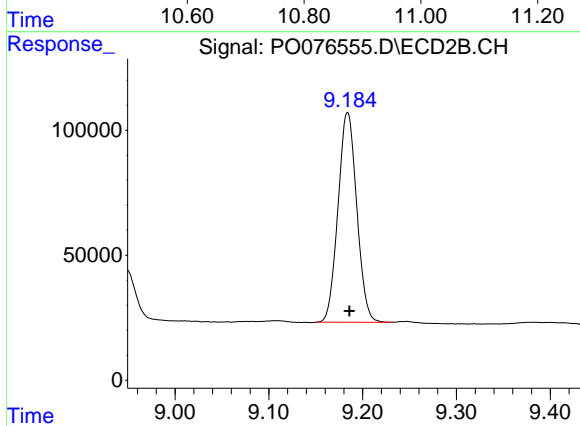
Instrument :
 ECD_O
 ClientSampleId :
 SB-4D-(4.5-5)MSD



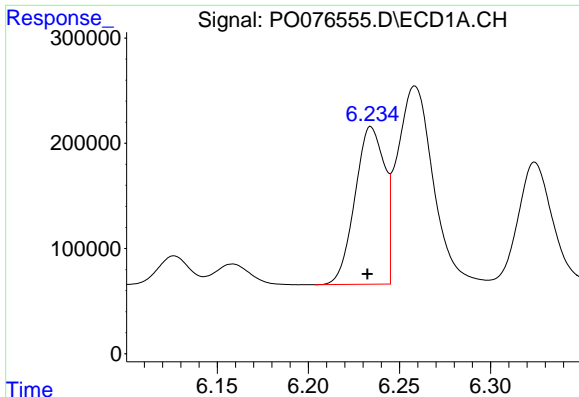
#1 Tetrachloro-m-xylene
 R.T.: 3.927 min
 Delta R.T.: 0.000 min
 Response: 1170469
 Conc: 21.34 ng/ml



#2 Decachlorobiphenyl
 R.T.: 10.888 min
 Delta R.T.: 0.001 min
 Response: 1808074
 Conc: 27.78 ng/ml



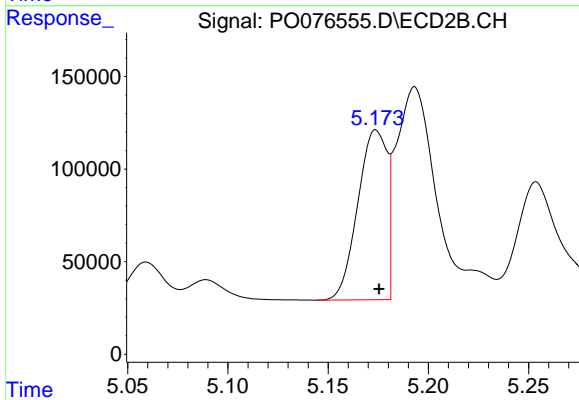
#2 Decachlorobiphenyl
 R.T.: 9.184 min
 Delta R.T.: -0.002 min
 Response: 1164729
 Conc: 24.72 ng/ml



#3 AR-1016-1

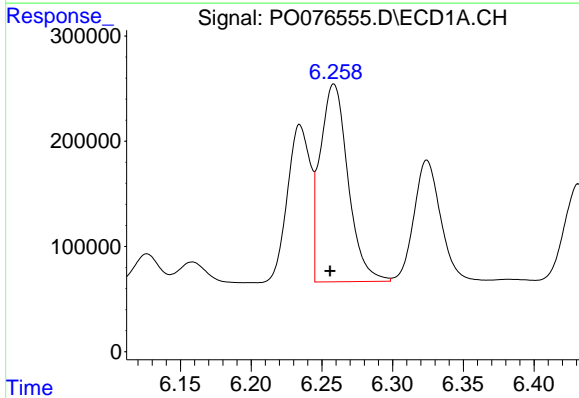
R.T.: 6.234 min
Delta R.T.: 0.002 min
Response: 1690762
Conc: 625.63 ng/ml

Instrument :
ECD_O
ClientSampleId :
SB-4D-(4.5-5)MSD



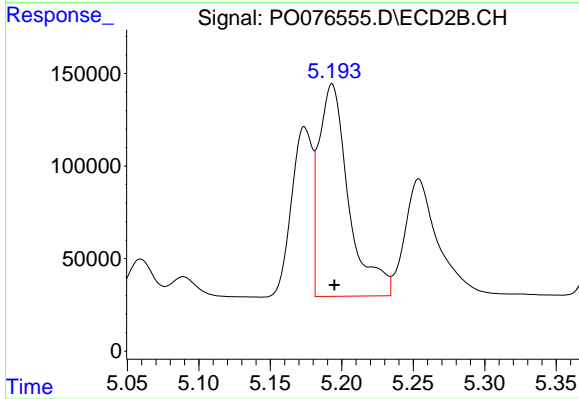
#3 AR-1016-1

R.T.: 5.174 min
Delta R.T.: -0.002 min
Response: 933515
Conc: 566.79 ng/ml



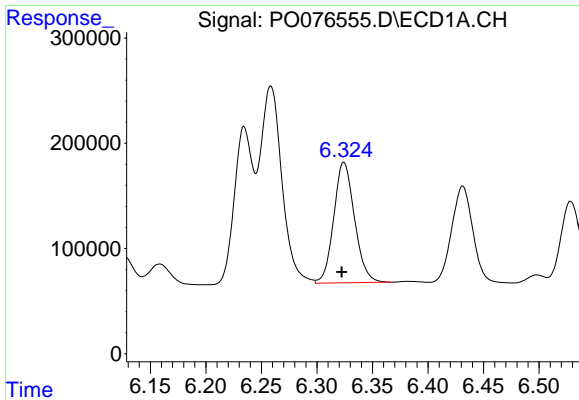
#4 AR-1016-2

R.T.: 6.258 min
Delta R.T.: 0.003 min
Response: 2572419
Conc: 625.76 ng/ml



#4 AR-1016-2

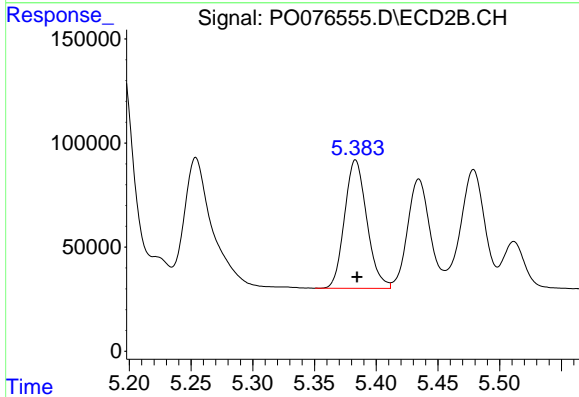
R.T.: 5.193 min
Delta R.T.: -0.002 min
Response: 1664054
Conc: 573.42 ng/ml



#5 AR-1016-3

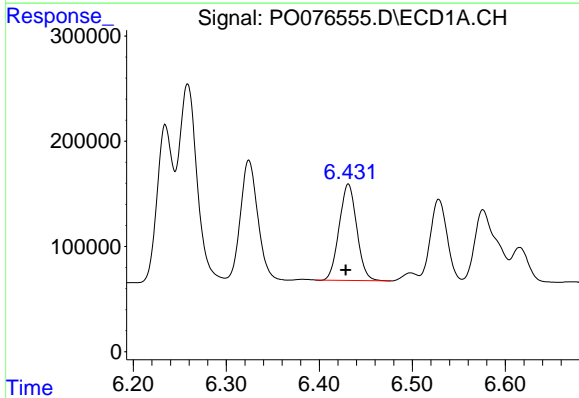
R.T.: 6.324 min
 Delta R.T.: 0.002 min
 Response: 1492827
 Conc: 618.70 ng/ml

Instrument :
 ECD_O
ClientSampleId :
 SB-4D-(4.5-5)MSD



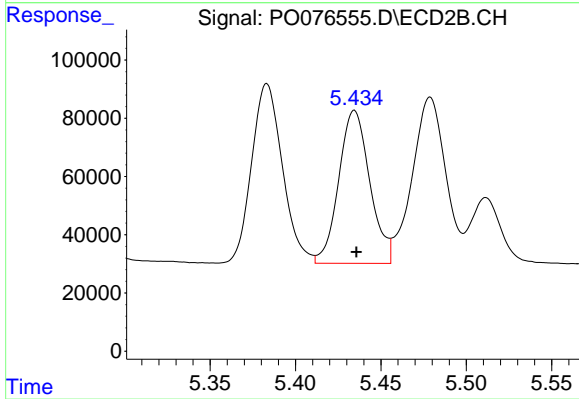
#5 AR-1016-3

R.T.: 5.383 min
 Delta R.T.: -0.001 min
 Response: 773681
 Conc: 579.45 ng/ml



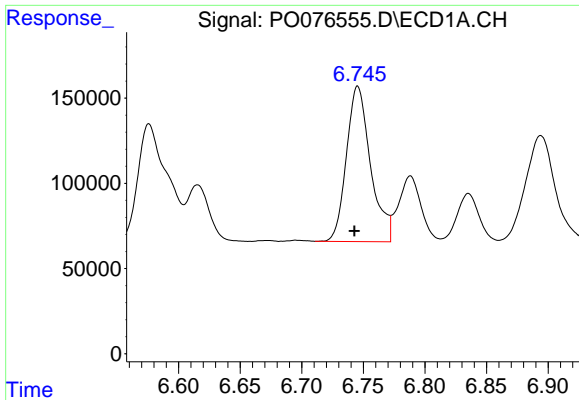
#6 AR-1016-4

R.T.: 6.431 min
 Delta R.T.: 0.003 min
 Response: 1200247
 Conc: 619.26 ng/ml



#6 AR-1016-4

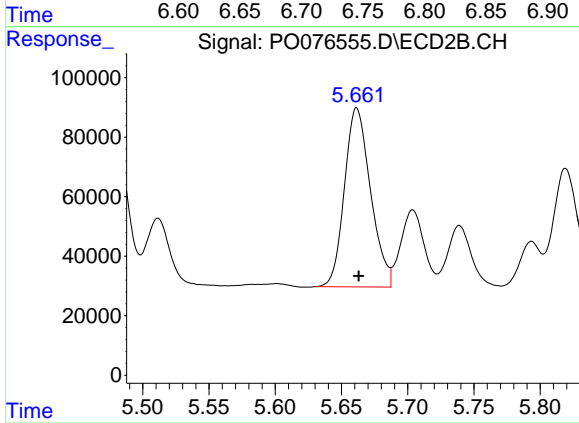
R.T.: 5.434 min
 Delta R.T.: -0.001 min
 Response: 665123
 Conc: 592.54 ng/ml



#7 AR-1016-5

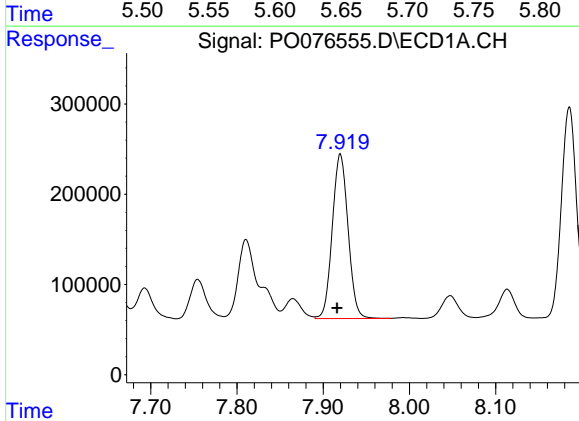
R.T.: 6.745 min
Delta R.T.: 0.003 min
Response: 1239624
Conc: 636.45 ng/ml

Instrument :
ECD_O
ClientSampleId :
SB-4D-(4.5-5)MSD



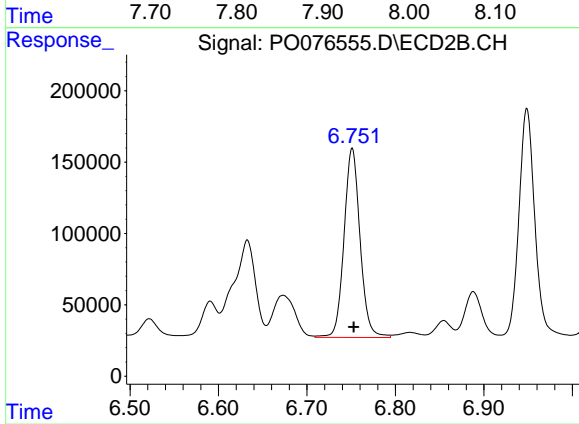
#7 AR-1016-5

R.T.: 5.661 min
Delta R.T.: -0.002 min
Response: 825460
Conc: 599.47 ng/ml



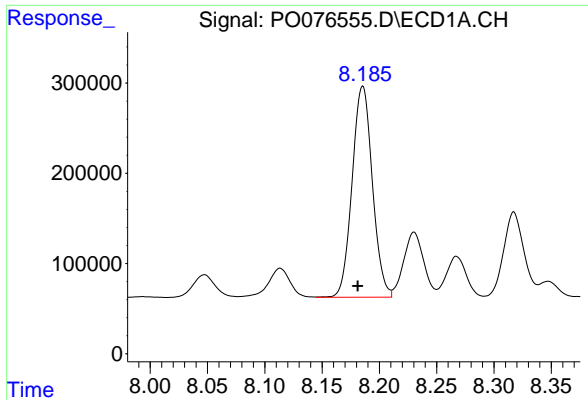
#31 AR-1260-1

R.T.: 7.920 min
Delta R.T.: 0.004 min
Response: 2313151
Conc: 673.14 ng/ml



#31 AR-1260-1

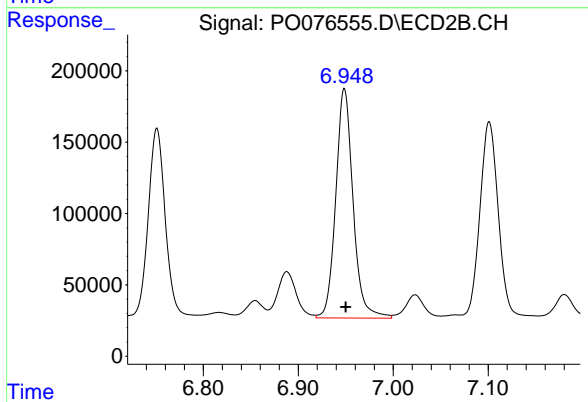
R.T.: 6.751 min
Delta R.T.: -0.002 min
Response: 1669865
Conc: 651.56 ng/ml



#32 AR-1260-2

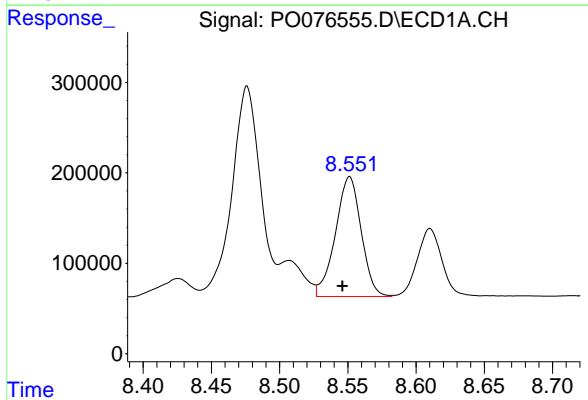
R.T.: 8.186 min
 Delta R.T.: 0.004 min
 Response: 2881674
 Conc: 710.72 ng/ml

Instrument :
 ECD_O
 ClientSampleId :
 SB-4D-(4.5-5)MSD



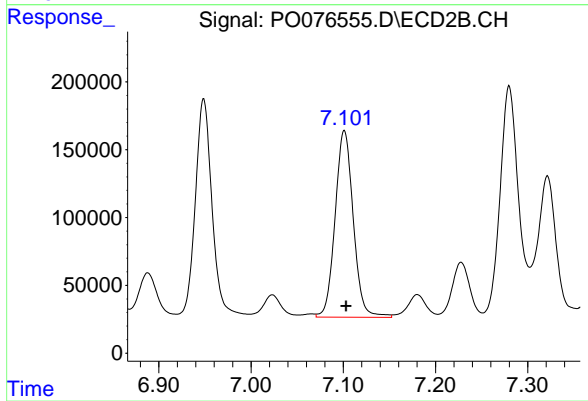
#32 AR-1260-2

R.T.: 6.949 min
 Delta R.T.: -0.001 min
 Response: 2036067
 Conc: 656.52 ng/ml



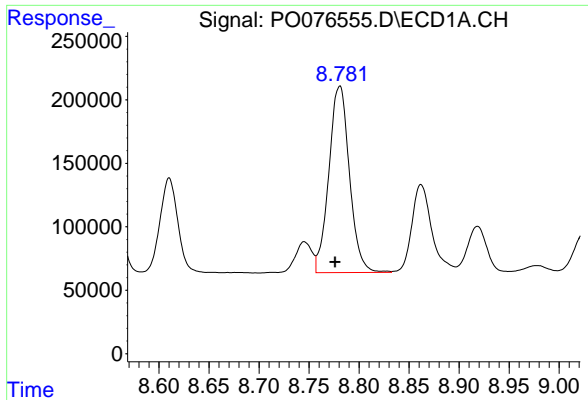
#33 AR-1260-3

R.T.: 8.551 min
 Delta R.T.: 0.005 min
 Response: 1740504
 Conc: 576.11 ng/ml



#33 AR-1260-3

R.T.: 7.101 min
 Delta R.T.: -0.002 min
 Response: 1882881
 Conc: 640.93 ng/ml

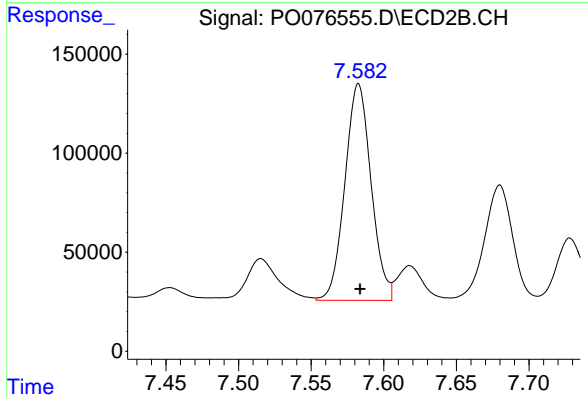


#34 AR-1260-4

R.T.: 8.781 min
 Delta R.T.: 0.005 min
 Response: 2108673
 Conc: 605.10 ng/ml

Instrument :
 ECD_O
 ClientSampleId :
 SB-4D-(4.5-5)MSD

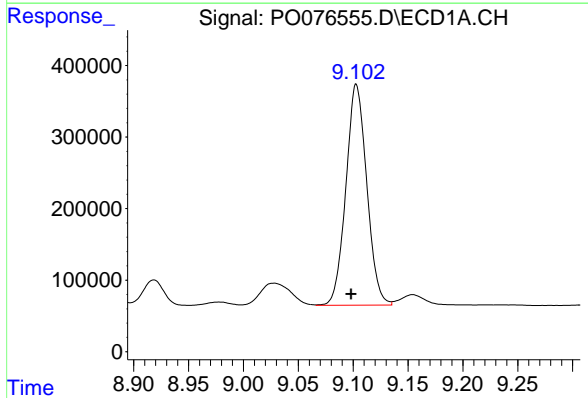
Time 8.60 8.65 8.70 8.75 8.80 8.85 8.90 8.95 9.00



#34 AR-1260-4

R.T.: 7.583 min
 Delta R.T.: -0.001 min
 Response: 1374565
 Conc: 576.74 ng/ml

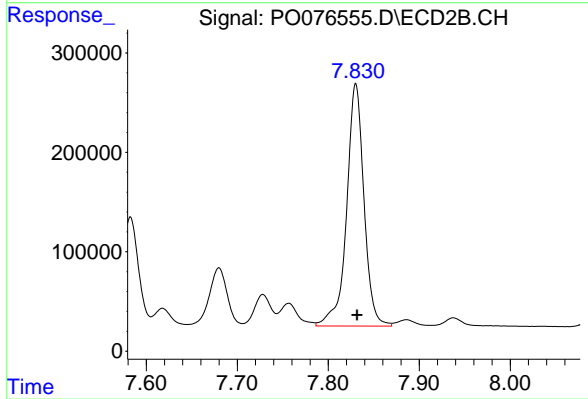
Time 7.45 7.50 7.55 7.60 7.65 7.70



#35 AR-1260-5

R.T.: 9.103 min
 Delta R.T.: 0.005 min
 Response: 4090076
 Conc: 605.23 ng/ml

Time 8.90 8.95 9.00 9.05 9.10 9.15 9.20 9.25



#35 AR-1260-5

R.T.: 7.830 min
 Delta R.T.: -0.001 min
 Response: 3233624
 Conc: 569.97 ng/ml

Time 7.60 7.70 7.80 7.90 8.00