

Data Path : Z:\pestpcbsrv\HPCHEM1\ECD\_0\Data\P0032625\  
 Data File : PO110014.D  
 Signal(s) : Signal #1: ECD1A.ch Signal #2: ECD2B.ch  
 Acq On : 26 Mar 2025 13:41  
 Operator : YP/AJ  
 Sample : Q1642-01  
 Misc :  
 ALS Vial : 10 Sample Multiplier: 1

Instrument :  
 ECD\_0  
 ClientSampleId :  
 PAT-1-032525

Integration File signal 1: autoint1.e  
 Integration File signal 2: autoint2.e  
 Quant Time: Mar 26 14:35:27 2025  
 Quant Method : Z:\pestpcbsrv\HPCHEM1\ECD\_0\methods\P0031925.M  
 Quant Title : GC EXTRACTABLES  
 QLast Update : Wed Mar 19 02:52:01 2025  
 Response via : Initial Calibration  
 Integrator: ChemStation

Volume Inj. : 2 µl  
 Signal #1 Phase : ZB-MR1 Signal #2 Phase: ZB-MR2  
 Signal #1 Info : 30Mx0.32mmx 0.50µ Signal #2 Info : 30M x 0.32mm x 0.25µm

Compound	RT#1	RT#2	Resp#1	Resp#2	ng/ml	ng/ml
System Monitoring Compounds						
1) SA Tetrachlo...	3.692	3.679	114.9E6	1267802	12.621	0.242 #
2) SA Decachlor...	8.744	8.711	155.5E6	46879781	20.226	19.323
Target Compounds						
3) L1 AR-1016-1	4.797	4.796	23581701	7872429	70.070	42.959 #
4) L1 AR-1016-2	4.797	4.796	23581701	7872429	50.857	30.104 #
5) L1 AR-1016-3	4.885	4.982	15961520	4935407	49.789	34.811 #
6) L1 AR-1016-4	4.981	5.025	7187321	19525160	28.443	165.566 #
7) L1 AR-1016-5	5.236	5.234	13222703	3545551	48.106	23.186 #
8) L2 AR-1221-1	3.917	3.899	5255236	2846546	45.371	42.561
9) L2 AR-1221-2	3.974	3.985	55418514	31446438	640.679	636.804
10) L2 AR-1221-3	4.071	4.080	9476119	3061948	36.210	20.186 #
11) L3 AR-1232-1	4.071	4.080	9476119	3061948	43.923	24.675 #
12) L3 AR-1232-2	4.557	4.796	4579615	7872429	39.897	65.414 #
13) L3 AR-1232-3	4.797	4.982	23581701	4935407	111.350	77.532 #
14) L3 AR-1232-4	4.981	5.067	7187321	19653076	63.290	331.189 #
15) L3 AR-1232-5	5.025	5.234	27002144	3545551	335.622	56.085 #
16) L4 AR-1242-1	4.797	4.796	23581701	7872429	88.187	53.841 #
17) L4 AR-1242-2	4.797	4.796	23581701	7872429	64.045	37.842 #
18) L4 AR-1242-3	4.885	4.982	15961520	4935407	61.878	44.219 #
19) L4 AR-1242-4	4.981	5.067	7187321	19653076	35.920	169.458 #
20) L4 AR-1242-5	5.636	5.590	16148951	22574199	76.515	164.485 #
21) L5 AR-1248-1	4.797	4.796	23581701	7872429	106.955	64.774 #
22) L5 AR-1248-2	5.025	5.025	27002144	19525160	89.652	115.905 #
23) L5 AR-1248-3	5.236	5.067	13222703	19653076	35.432	108.467 #
24) L5 AR-1248-4	5.594	5.234	36939596	3545551	69.959	16.847 #
25) L5 AR-1248-5	5.636	5.631	16148951	10185581	43.301	48.999
26) L6 AR-1254-1	5.594	5.590	36939596	22574199	65.351	72.192
27) L6 AR-1254-2	5.743	5.737	34129340	25024962	70.920	92.161 #
28) L6 AR-1254-3	6.149	6.139	80078363	57913198	103.583	139.404 #
29) L6 AR-1254-4	6.377	6.366	41494143	27309156	86.421	112.582 #
30) L6 AR-1254-5	6.796	6.784	-32664495	46334382	N.D.	137.942 #
31) L7 AR-1260-1	6.280	6.270	44584959	28759619	94.590	112.588
32) L7 AR-1260-2	6.469	6.457	45307102	20761169	76.080	69.138
33) L7 AR-1260-3	6.796f	6.609	-32664495	22074604	N.D.	76.387 #
34) L7 AR-1260-4	7.096	7.081	6750829	5762876	15.915	26.794 #
35) L7 AR-1260-5	7.338	7.298	13603369	10190501	13.007	20.434 #
36) L8 AR-1262-1	6.796f	6.784	-32664495	46334382	N.D.	134.571 #
37) L8 AR-1262-2	7.338	7.298	13603369	10190501	11.412	18.969 #
38) L8 AR-1262-3	0.000	7.605	0	4728717	N.D.	24.368 #
39) L8 AR-1262-4	7.703	7.668	314.2E6	15090891	359.309	41.712 #
40) L8 AR-1262-5	0.000	8.162	0	1427651	N.D.	10.114 #
41) L9 AR-1268-1	0.000	7.605	0	4728717	N.D.	8.079 #

Data Path : Z:\pestpcbsrv\HPCHEM1\ECD\_0\Data\P0032625\  
 Data File : P0110014.D  
 Signal(s) : Signal #1: ECD1A.ch Signal #2: ECD2B.ch  
 Acq On : 26 Mar 2025 13:41  
 Operator : YP/AJ  
 Sample : Q1642-01  
 Misc :  
 ALS Vial : 10 Sample Multiplier: 1

Instrument :  
 ECD\_0  
 ClientSampleId :  
 PAT-1-032525

Integration File signal 1: autoint1.e  
 Integration File signal 2: autoint2.e  
 Quant Time: Mar 26 14:35:27 2025  
 Quant Method : Z:\pestpcbsrv\HPCHEM1\ECD\_0\methods\P0031925.M  
 Quant Title : GC EXTRACTABLES  
 QLast Update : Wed Mar 19 02:52:01 2025  
 Response via : Initial Calibration  
 Integrator: ChemStation

Volume Inj. : 2 µl  
 Signal #1 Phase : ZB-MR1 Signal #2 Phase: ZB-MR2  
 Signal #1 Info : 30Mx0.32mmx 0.50µ Signal #2 Info : 30M x 0.32mm x 0.25µm

	Compound	RT#1	RT#2	Resp#1	Resp#2	ng/ml	ng/ml
42)	L9 AR-1268-2	7.703	7.668	314.2E6	15090891	245.474	28.069 #
43)	L9 AR-1268-3	7.892	7.853	55178522	541499	53.698	1.303 #
44)	L9 AR-1268-4	0.000	8.162	0	1427651	N.D.	8.865 #
45)	L9 AR-1268-5	8.482	8.424	4439163	637680	1.395	0.642 #

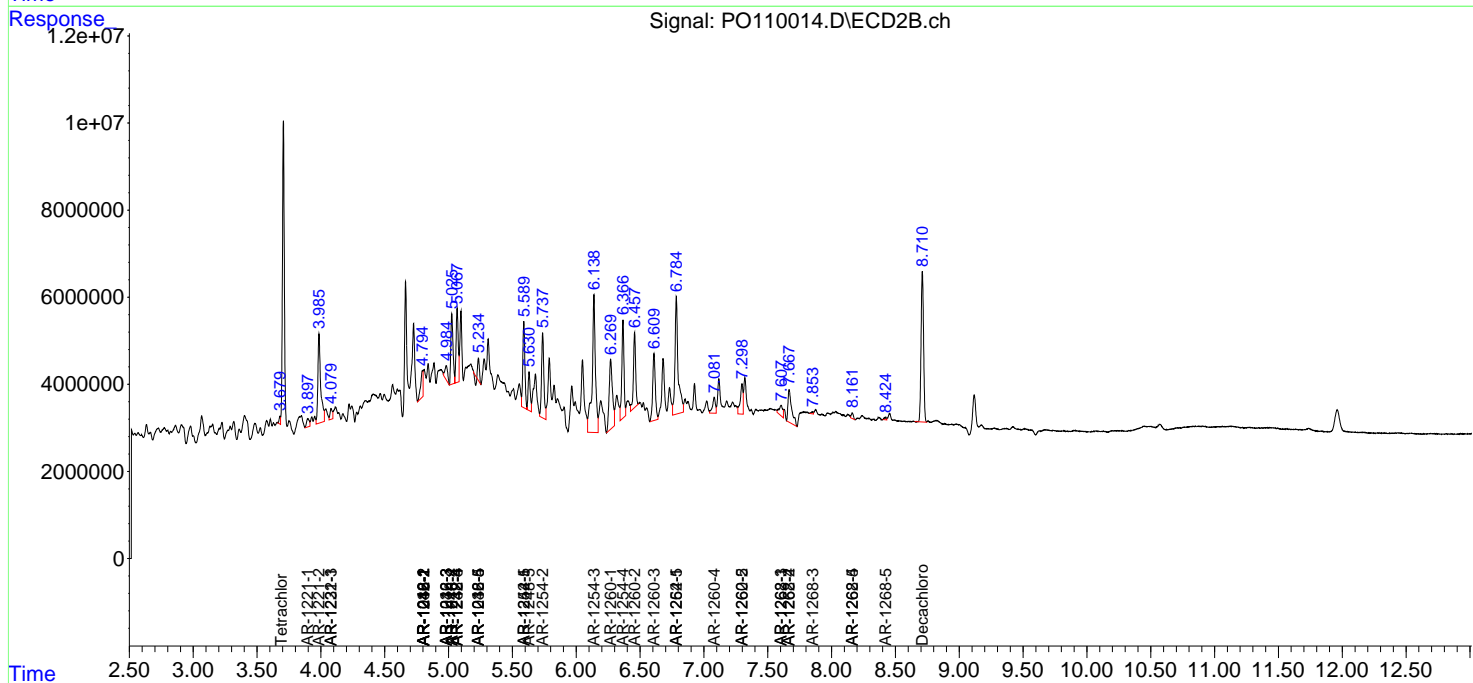
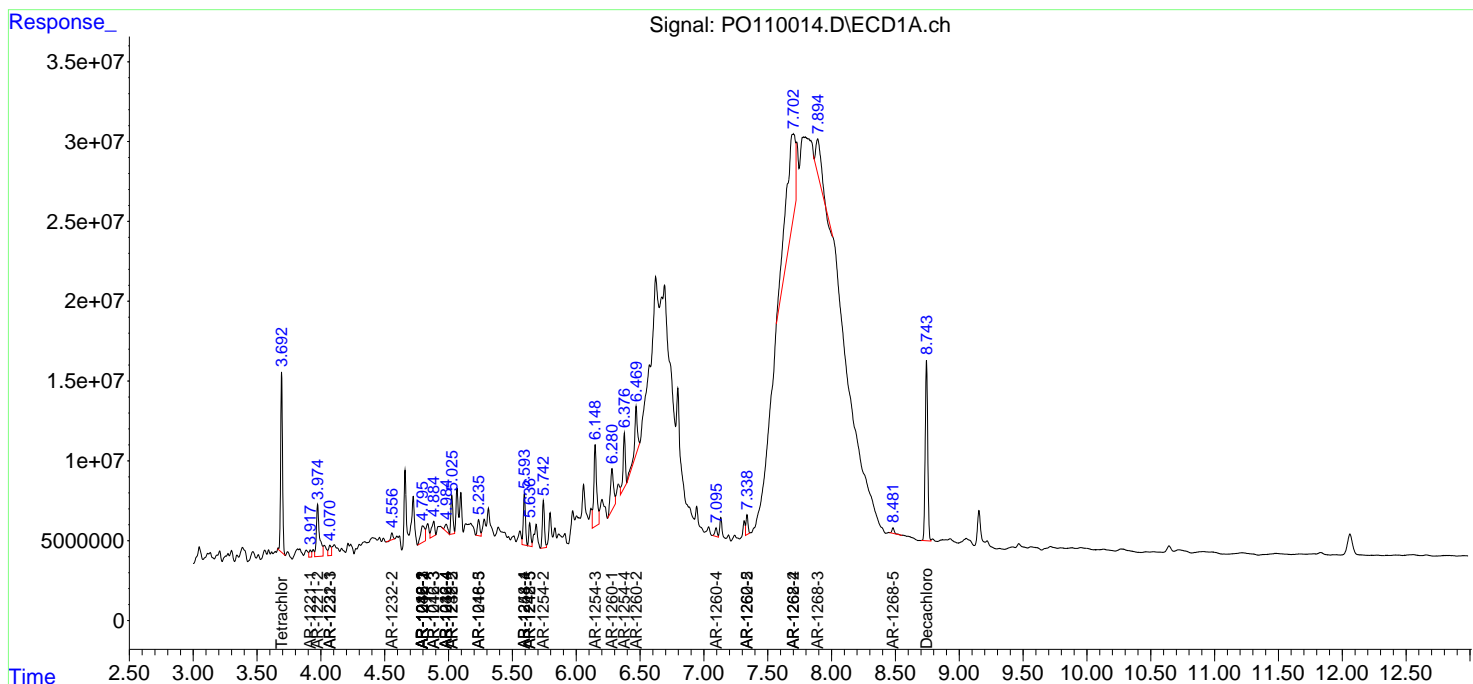
(f)=RT Delta > 1/2 Window (#)=Amounts differ by > 25% (m)=manual int.

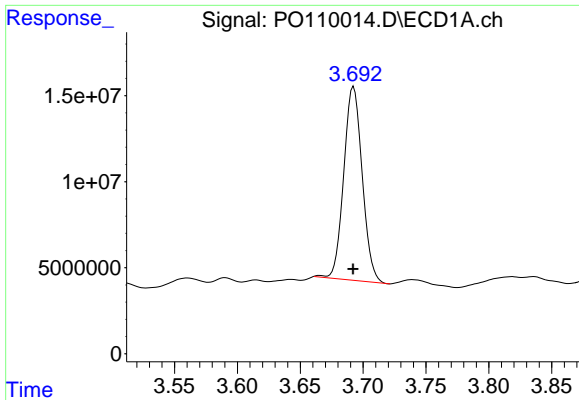
Data Path : Z:\pestpcbsrv\HPCHEM1\ECD\_O\Data\P0032625\  
 Data File : P0110014.D  
 Signal(s) : Signal #1: ECD1A.ch Signal #2: ECD2B.ch  
 Acq On : 26 Mar 2025 13:41  
 Operator : YP/AJ  
 Sample : Q1642-01  
 Misc :  
 ALS Vial : 10 Sample Multiplier: 1

Instrument :  
 ECD\_O  
 ClientSampleId :  
 PAT-1-032525

Integration File signal 1: autoint1.e  
 Integration File signal 2: autoint2.e  
 Quant Time: Mar 26 14:35:27 2025  
 Quant Method : Z:\pestpcbsrv\HPCHEM1\ECD\_O\methods\P0031925.M  
 Quant Title : GC EXTRACTABLES  
 QLast Update : Wed Mar 19 02:52:01 2025  
 Response via : Initial Calibration  
 Integrator: ChemStation

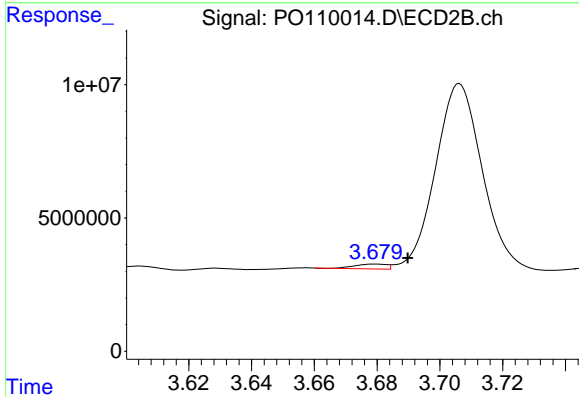
Volume Inj. : 2 µl  
 Signal #1 Phase : ZB-MR1 Signal #2 Phase: ZB-MR2  
 Signal #1 Info : 30Mx0.32mmx 0.50µ Signal #2 Info : 30M x 0.32mm x 0.25µm



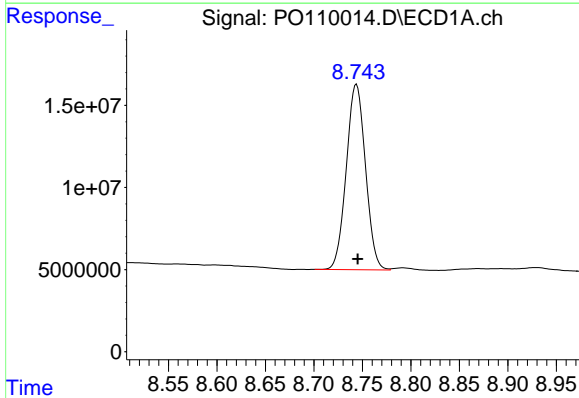


#1 Tetrachloro-m-xylene  
 R.T.: 3.692 min  
 Delta R.T.: 0.000 min  
 Response: 114866510  
 Conc: 12.62 ng/ml

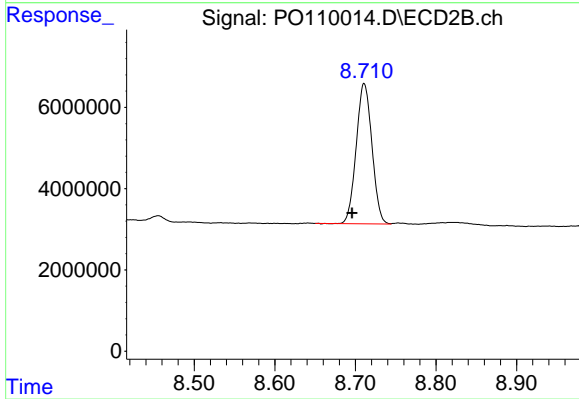
Instrument :  
 ECD\_O  
 ClientSampleId :  
 PAT-1-032525



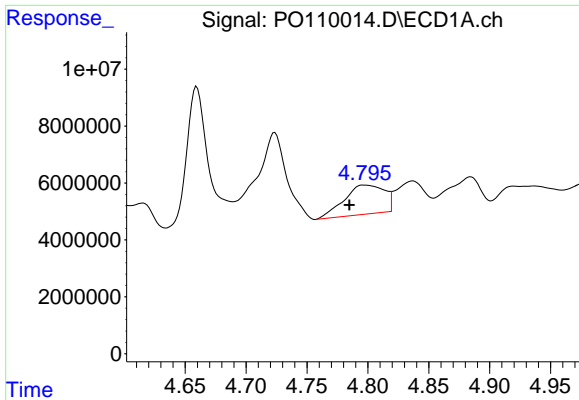
#1 Tetrachloro-m-xylene  
 R.T.: 3.679 min  
 Delta R.T.: -0.010 min  
 Response: 1267802  
 Conc: 0.24 ng/ml



#2 Decachlorobiphenyl  
 R.T.: 8.744 min  
 Delta R.T.: -0.002 min  
 Response: 155511363  
 Conc: 20.23 ng/ml



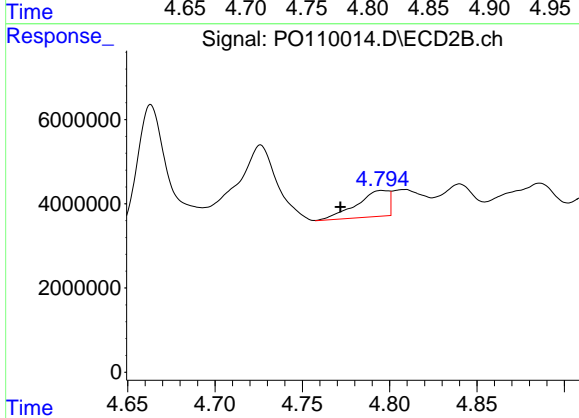
#2 Decachlorobiphenyl  
 R.T.: 8.711 min  
 Delta R.T.: 0.015 min  
 Response: 46879781  
 Conc: 19.32 ng/ml



#3 AR-1016-1

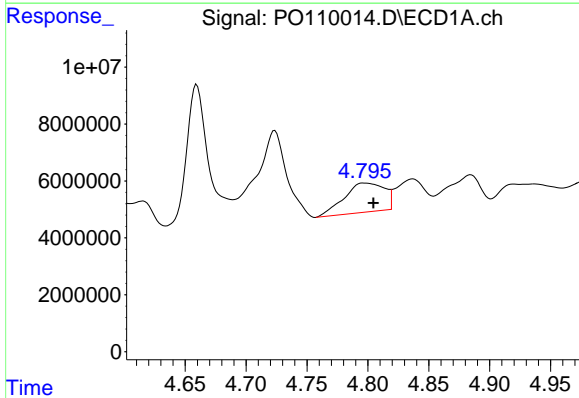
R.T.: 4.797 min  
Delta R.T.: 0.012 min  
Response: 23581701  
Conc: 70.07 ng/ml

Instrument :  
ECD\_O  
ClientSampleId :  
PAT-1-032525



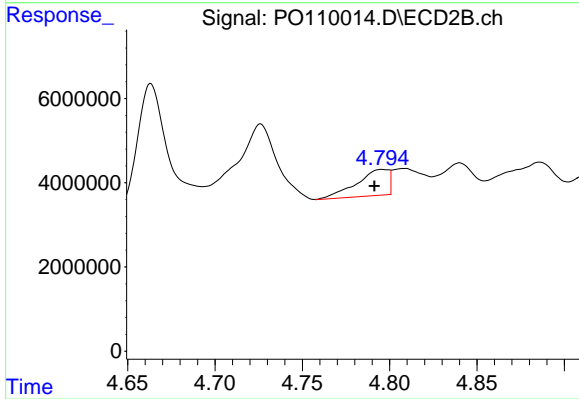
#3 AR-1016-1

R.T.: 4.796 min  
Delta R.T.: 0.024 min  
Response: 7872429  
Conc: 42.96 ng/ml



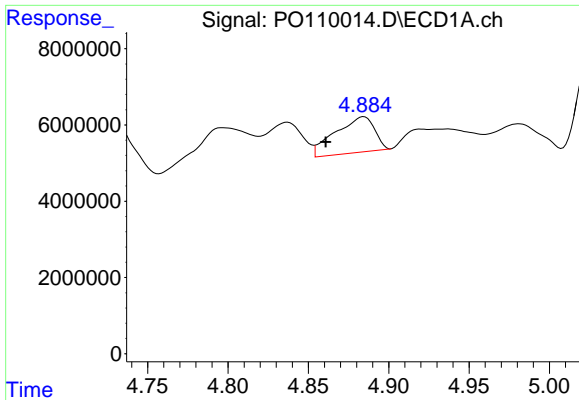
#4 AR-1016-2

R.T.: 4.797 min  
Delta R.T.: -0.008 min  
Response: 23581701  
Conc: 50.86 ng/ml



#4 AR-1016-2

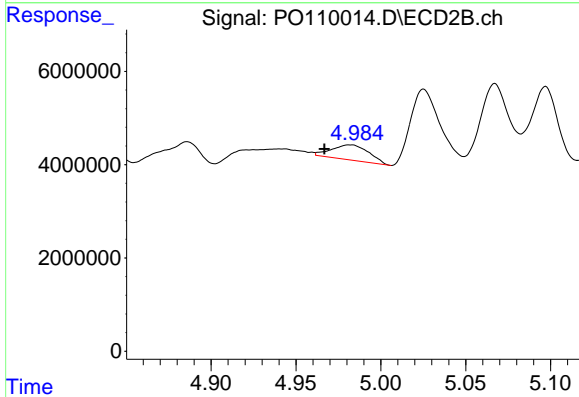
R.T.: 4.796 min  
Delta R.T.: 0.004 min  
Response: 7872429  
Conc: 30.10 ng/ml



#5 AR-1016-3

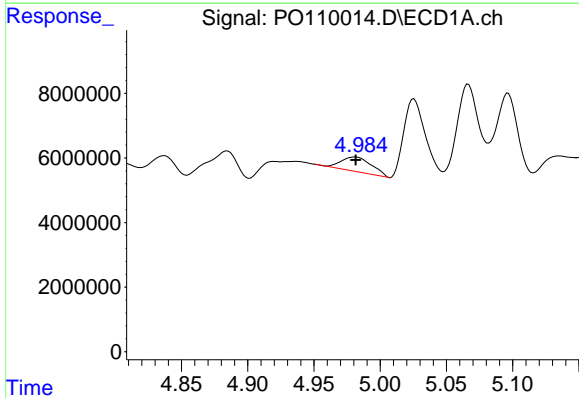
R.T.: 4.885 min  
 Delta R.T.: 0.024 min  
 Response: 15961520  
 Conc: 49.79 ng/ml

Instrument :  
 ECD\_O  
 ClientSampleId :  
 PAT-1-032525



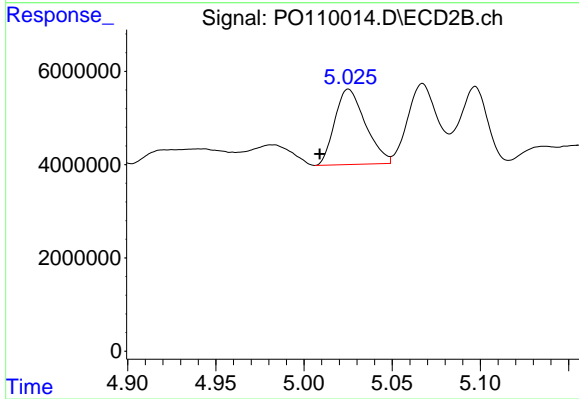
#5 AR-1016-3

R.T.: 4.982 min  
 Delta R.T.: 0.015 min  
 Response: 4935407  
 Conc: 34.81 ng/ml



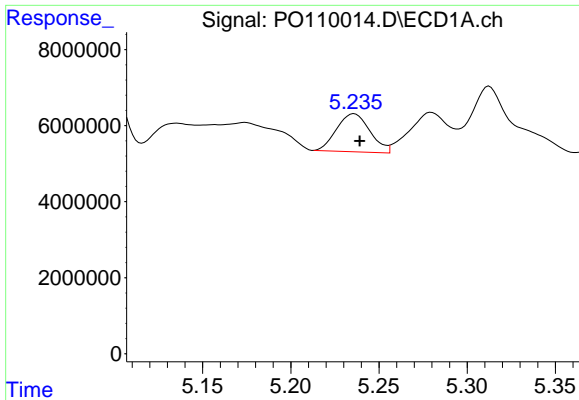
#6 AR-1016-4

R.T.: 4.981 min  
 Delta R.T.: 0.000 min  
 Response: 7187321  
 Conc: 28.44 ng/ml



#6 AR-1016-4

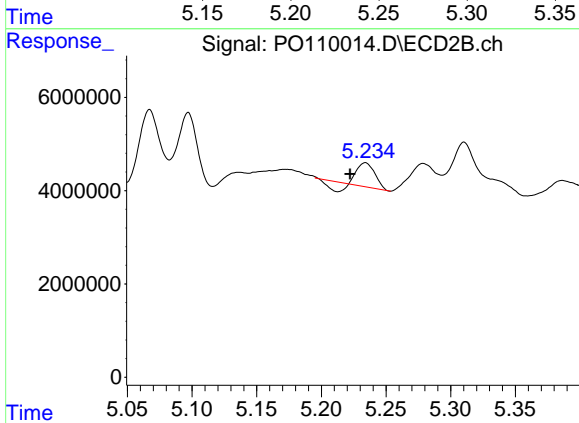
R.T.: 5.025 min  
 Delta R.T.: 0.016 min  
 Response: 19525160  
 Conc: 165.57 ng/ml



#7 AR-1016-5

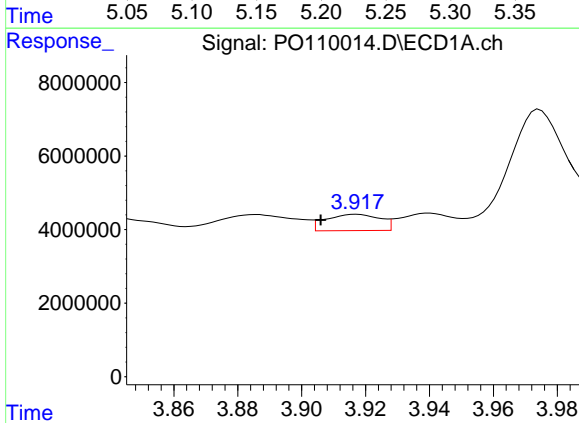
R.T.: 5.236 min  
 Delta R.T.: -0.003 min  
 Response: 13222703  
 Conc: 48.11 ng/ml

Instrument :  
 ECD\_O  
 ClientSampleId :  
 PAT-1-032525



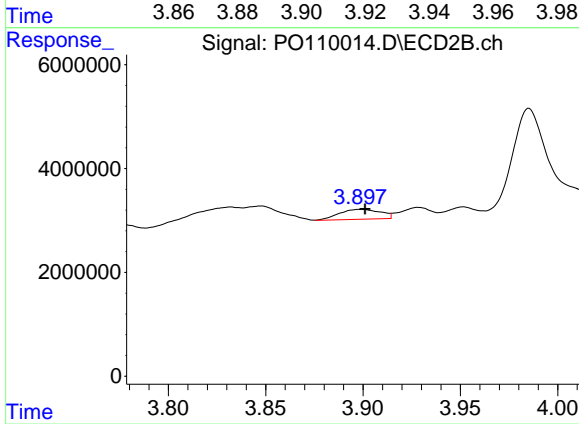
#7 AR-1016-5

R.T.: 5.234 min  
 Delta R.T.: 0.012 min  
 Response: 3545551  
 Conc: 23.19 ng/ml



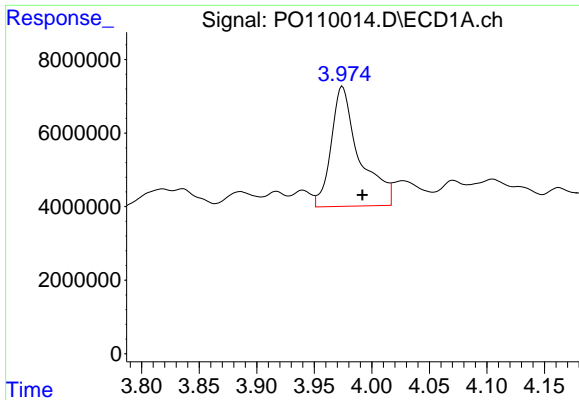
#8 AR-1221-1

R.T.: 3.917 min  
 Delta R.T.: 0.011 min  
 Response: 5255236  
 Conc: 45.37 ng/ml



#8 AR-1221-1

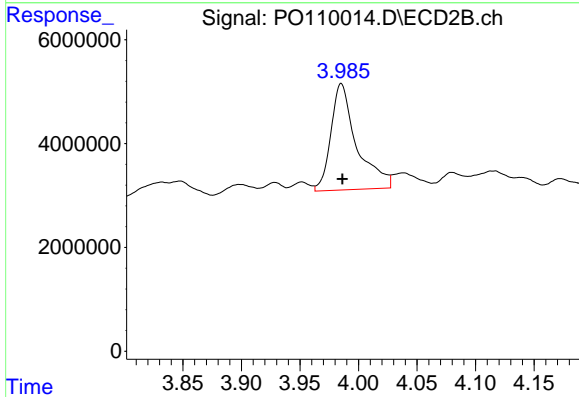
R.T.: 3.899 min  
 Delta R.T.: -0.002 min  
 Response: 2846546  
 Conc: 42.56 ng/ml



#9 AR-1221-2

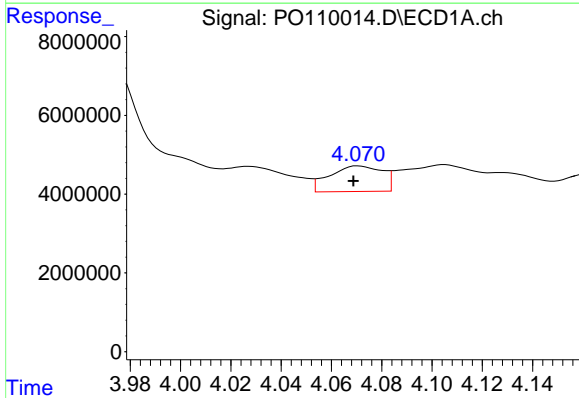
R.T.: 3.974 min  
 Delta R.T.: -0.017 min  
 Response: 55418514  
 Conc: 640.68 ng/ml

Instrument :  
 ECD\_O  
 ClientSampleId :  
 PAT-1-032525



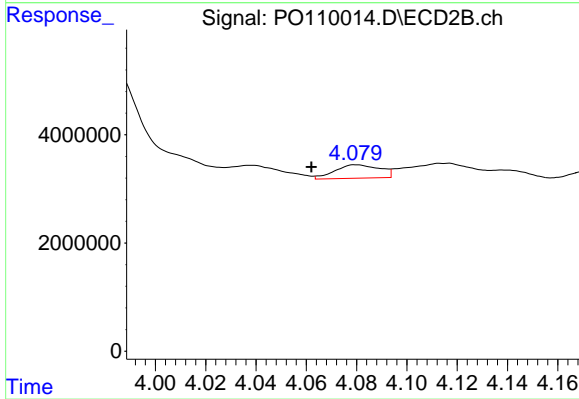
#9 AR-1221-2

R.T.: 3.985 min  
 Delta R.T.: 0.000 min  
 Response: 31446438  
 Conc: 636.80 ng/ml



#10 AR-1221-3

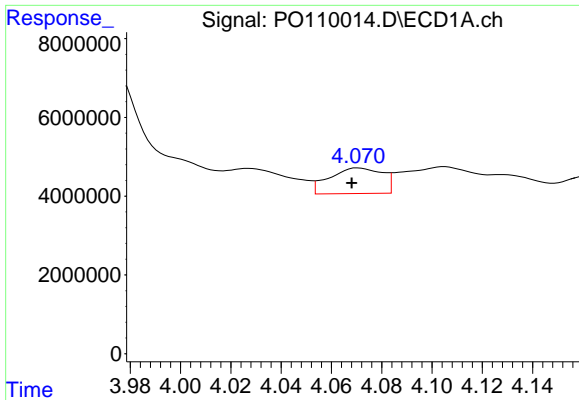
R.T.: 4.071 min  
 Delta R.T.: 0.002 min  
 Response: 9476119  
 Conc: 36.21 ng/ml



#10 AR-1221-3

R.T.: 4.080 min  
 Delta R.T.: 0.018 min  
 Response: 3061948  
 Conc: 20.19 ng/ml

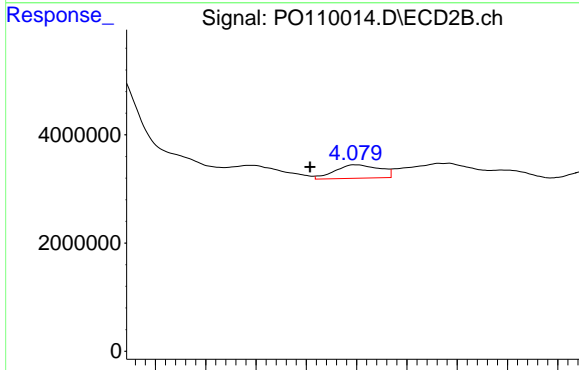




#11 AR-1232-1

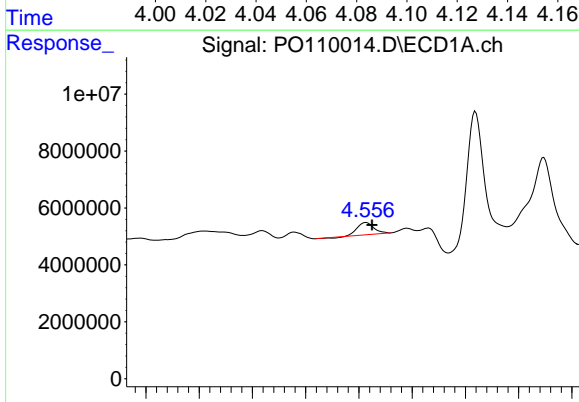
R.T.: 4.071 min  
 Delta R.T.: 0.002 min  
 Response: 9476119  
 Conc: 43.92 ng/ml

Instrument :  
 ECD\_O  
 ClientSampleId :  
 PAT-1-032525



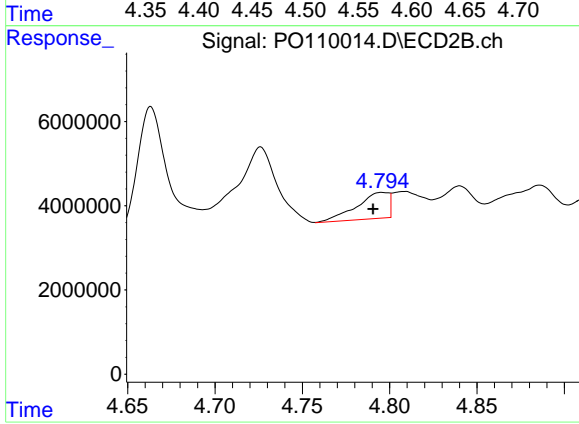
#11 AR-1232-1

R.T.: 4.080 min  
 Delta R.T.: 0.018 min  
 Response: 3061948  
 Conc: 24.67 ng/ml



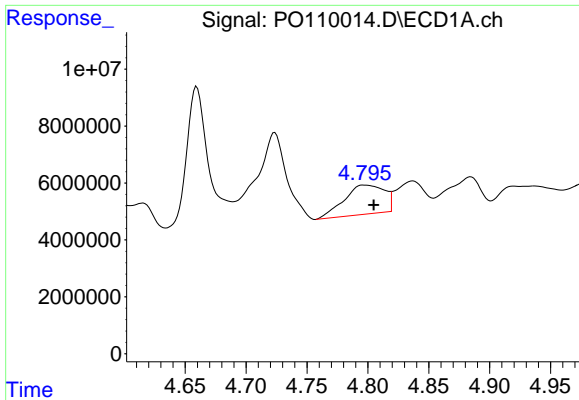
#12 AR-1232-2

R.T.: 4.557 min  
 Delta R.T.: -0.006 min  
 Response: 4579615  
 Conc: 39.90 ng/ml



#12 AR-1232-2

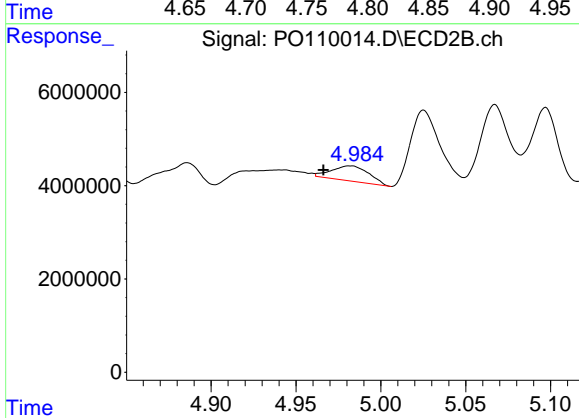
R.T.: 4.796 min  
 Delta R.T.: 0.005 min  
 Response: 7872429  
 Conc: 65.41 ng/ml



#13 AR-1232-3

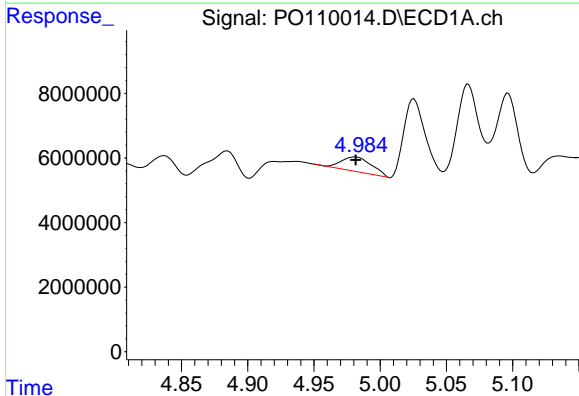
R.T.: 4.797 min  
 Delta R.T.: -0.008 min  
 Response: 23581701  
 Conc: 111.35 ng/ml

Instrument :  
 ECD\_O  
 ClientSampleId :  
 PAT-1-032525



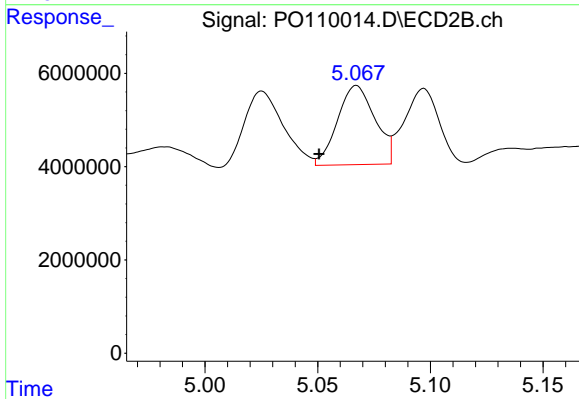
#13 AR-1232-3

R.T.: 4.982 min  
 Delta R.T.: 0.016 min  
 Response: 4935407  
 Conc: 77.53 ng/ml



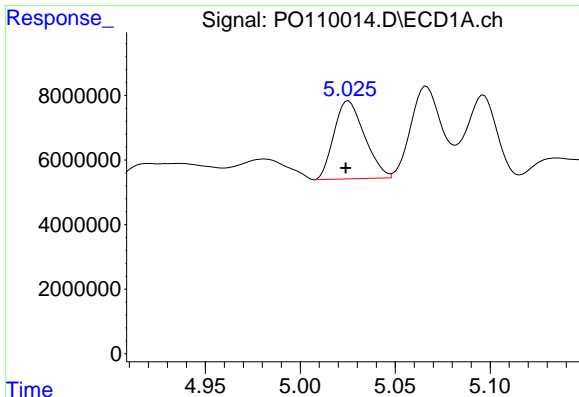
#14 AR-1232-4

R.T.: 4.981 min  
 Delta R.T.: 0.000 min  
 Response: 7187321  
 Conc: 63.29 ng/ml



#14 AR-1232-4

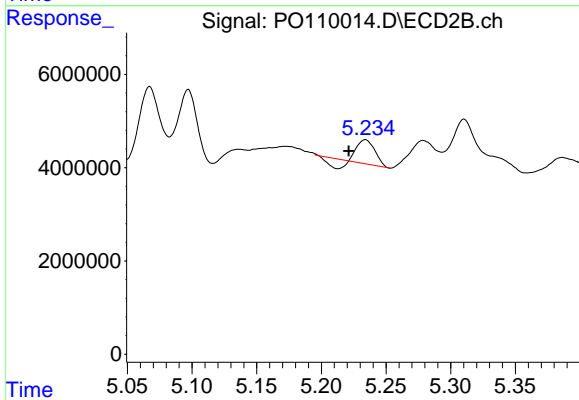
R.T.: 5.067 min  
 Delta R.T.: 0.017 min  
 Response: 19653076  
 Conc: 331.19 ng/ml



#15 AR-1232-5

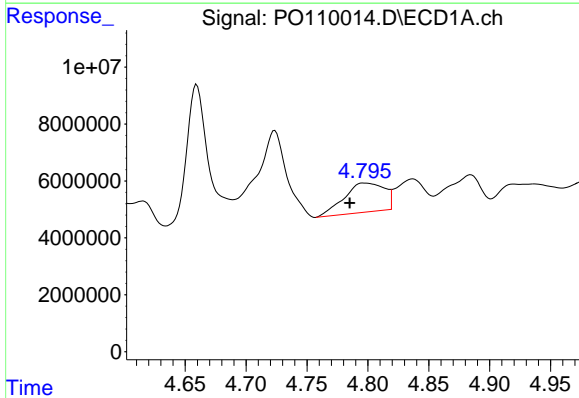
R.T.: 5.025 min  
 Delta R.T.: 0.002 min  
 Response: 27002144  
 Conc: 335.62 ng/ml

Instrument :  
 ECD\_O  
 ClientSampleId :  
 PAT-1-032525



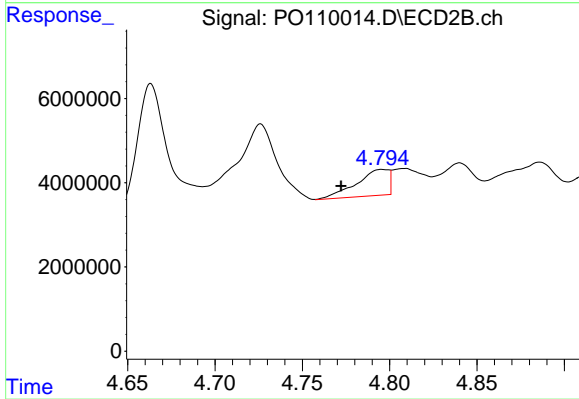
#15 AR-1232-5

R.T.: 5.234 min  
 Delta R.T.: 0.013 min  
 Response: 3545551  
 Conc: 56.08 ng/ml



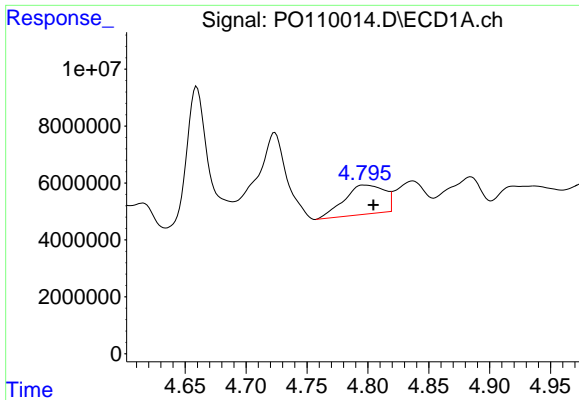
#16 AR-1242-1

R.T.: 4.797 min  
 Delta R.T.: 0.011 min  
 Response: 23581701  
 Conc: 88.19 ng/ml



#16 AR-1242-1

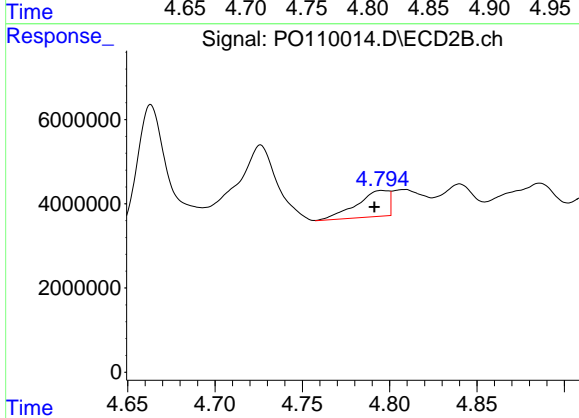
R.T.: 4.796 min  
 Delta R.T.: 0.023 min  
 Response: 7872429  
 Conc: 53.84 ng/ml



#17 AR-1242-2

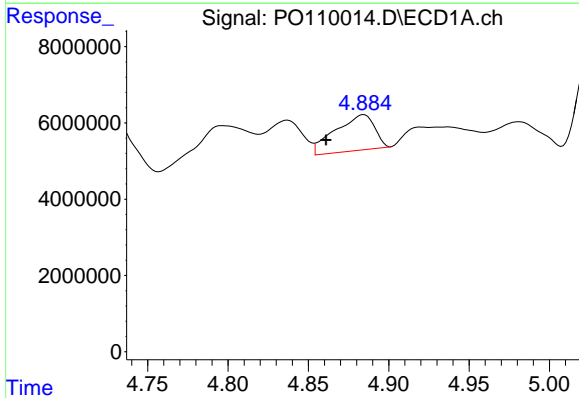
R.T.: 4.797 min  
 Delta R.T.: -0.008 min  
 Response: 23581701  
 Conc: 64.05 ng/ml

Instrument :  
 ECD\_O  
 ClientSampleId :  
 PAT-1-032525



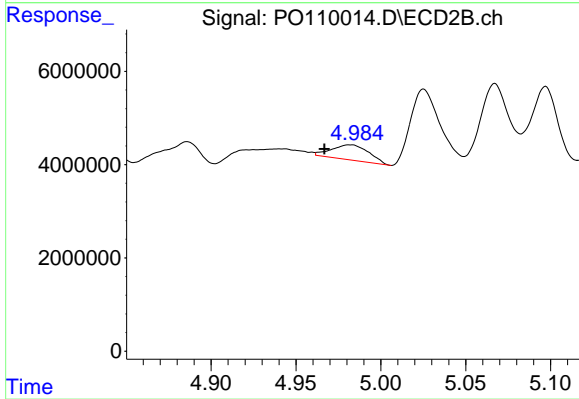
#17 AR-1242-2

R.T.: 4.796 min  
 Delta R.T.: 0.004 min  
 Response: 7872429  
 Conc: 37.84 ng/ml



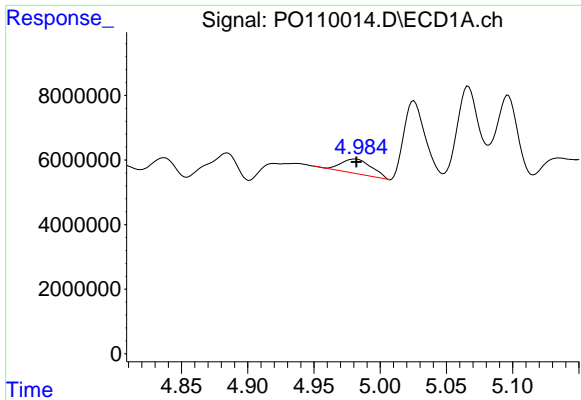
#18 AR-1242-3

R.T.: 4.885 min  
 Delta R.T.: 0.023 min  
 Response: 15961520  
 Conc: 61.88 ng/ml



#18 AR-1242-3

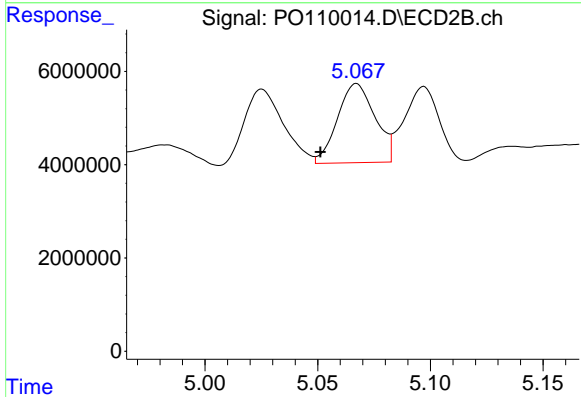
R.T.: 4.982 min  
 Delta R.T.: 0.015 min  
 Response: 4935407  
 Conc: 44.22 ng/ml



#19 AR-1242-4

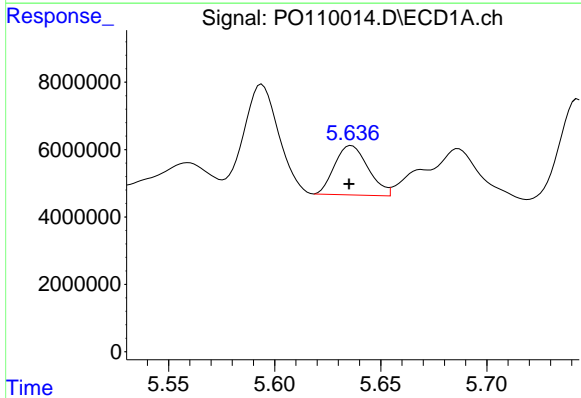
R.T.: 4.981 min  
 Delta R.T.: 0.000 min  
 Response: 7187321  
 Conc: 35.92 ng/ml

Instrument :  
 ECD\_O  
 ClientSampleId :  
 PAT-1-032525



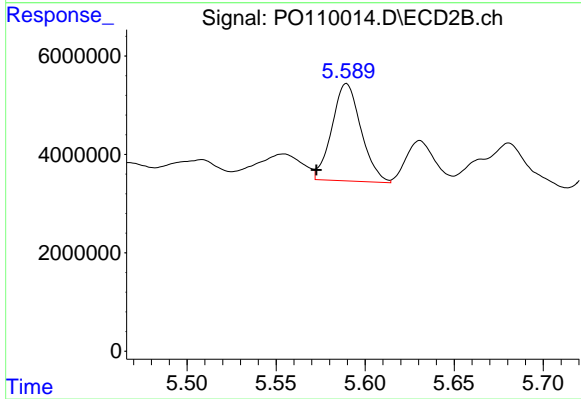
#19 AR-1242-4

R.T.: 5.067 min  
 Delta R.T.: 0.016 min  
 Response: 19653076  
 Conc: 169.46 ng/ml



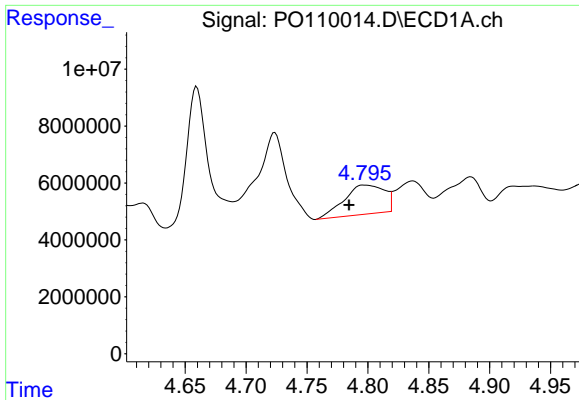
#20 AR-1242-5

R.T.: 5.636 min  
 Delta R.T.: 0.001 min  
 Response: 16148951  
 Conc: 76.51 ng/ml



#20 AR-1242-5

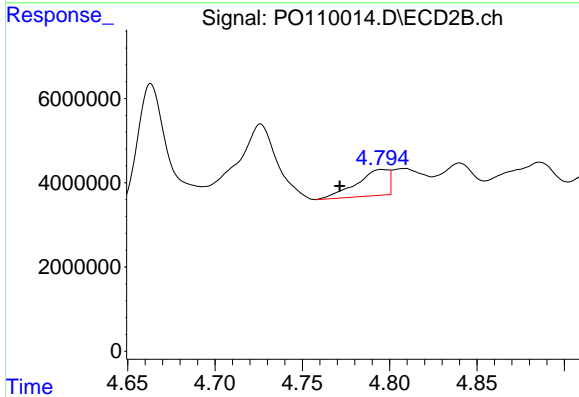
R.T.: 5.590 min  
 Delta R.T.: 0.017 min  
 Response: 22574199  
 Conc: 164.48 ng/ml



#21 AR-1248-1

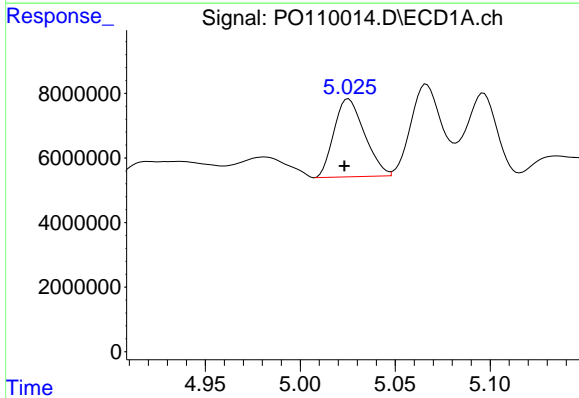
R.T.: 4.797 min  
 Delta R.T.: 0.012 min  
 Response: 23581701  
 Conc: 106.95 ng/ml

Instrument :  
 ECD\_O  
 ClientSampleId :  
 PAT-1-032525



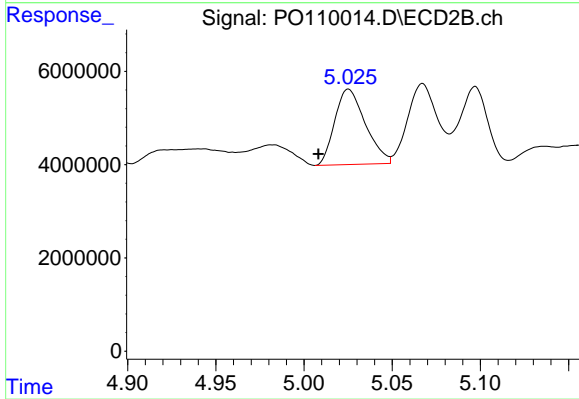
#21 AR-1248-1

R.T.: 4.796 min  
 Delta R.T.: 0.024 min  
 Response: 7872429  
 Conc: 64.77 ng/ml



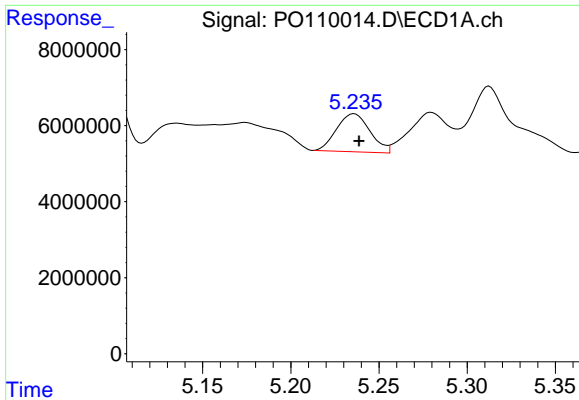
#22 AR-1248-2

R.T.: 5.025 min  
 Delta R.T.: 0.002 min  
 Response: 27002144  
 Conc: 89.65 ng/ml



#22 AR-1248-2

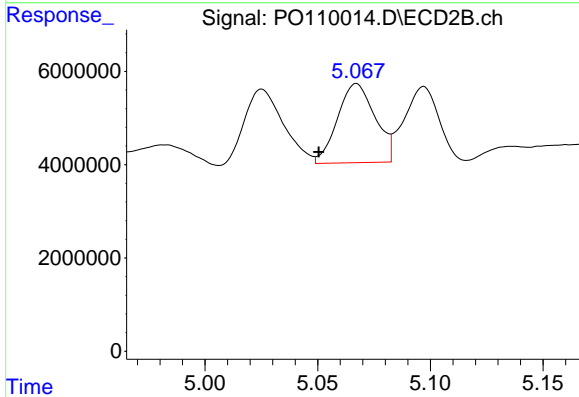
R.T.: 5.025 min  
 Delta R.T.: 0.017 min  
 Response: 19525160  
 Conc: 115.90 ng/ml



#23 AR-1248-3

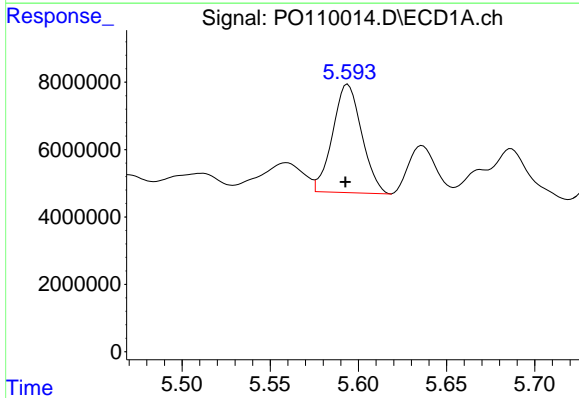
R.T.: 5.236 min  
 Delta R.T.: -0.003 min  
 Response: 13222703  
 Conc: 35.43 ng/ml

Instrument :  
 ECD\_O  
 ClientSampleId :  
 PAT-1-032525



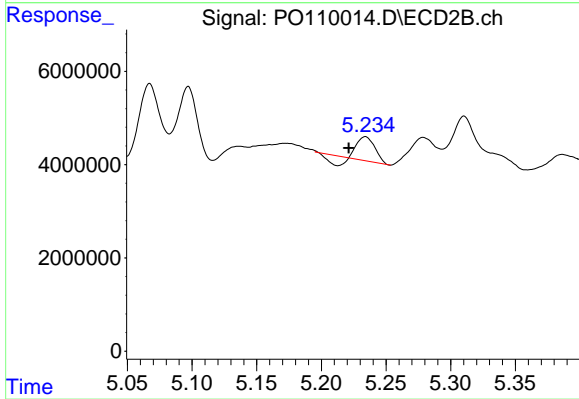
#23 AR-1248-3

R.T.: 5.067 min  
 Delta R.T.: 0.017 min  
 Response: 19653076  
 Conc: 108.47 ng/ml



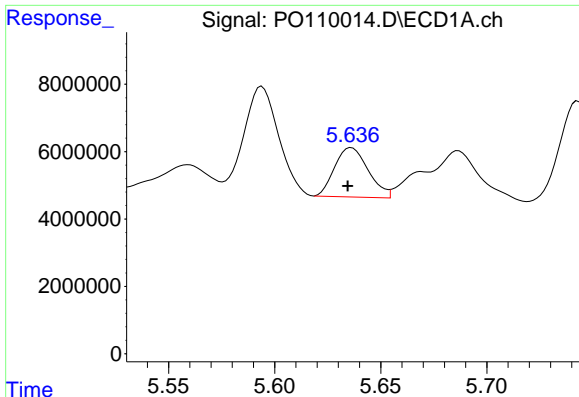
#24 AR-1248-4

R.T.: 5.594 min  
 Delta R.T.: 0.001 min  
 Response: 36939596  
 Conc: 69.96 ng/ml



#24 AR-1248-4

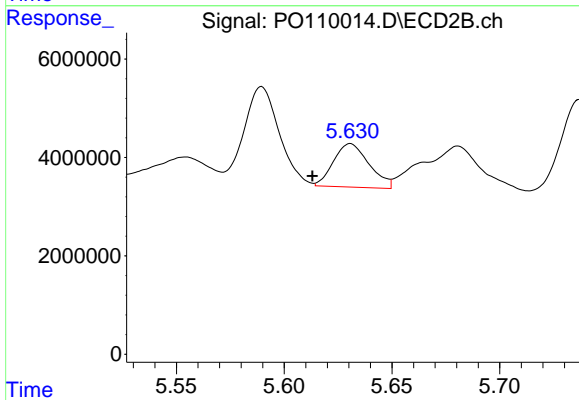
R.T.: 5.234 min  
 Delta R.T.: 0.013 min  
 Response: 3545551  
 Conc: 16.85 ng/ml



#25 AR-1248-5

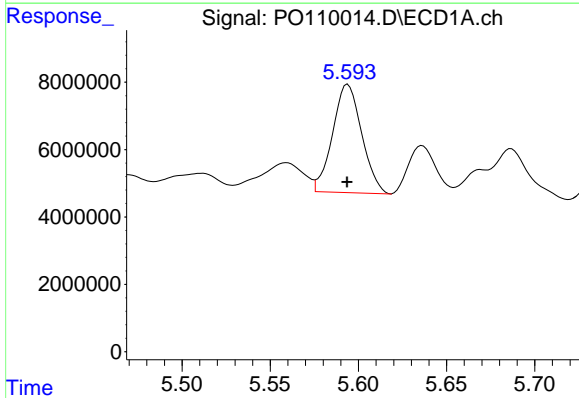
R.T.: 5.636 min  
 Delta R.T.: 0.002 min  
 Response: 16148951  
 Conc: 43.30 ng/ml

Instrument :  
 ECD\_O  
 ClientSampleId :  
 PAT-1-032525



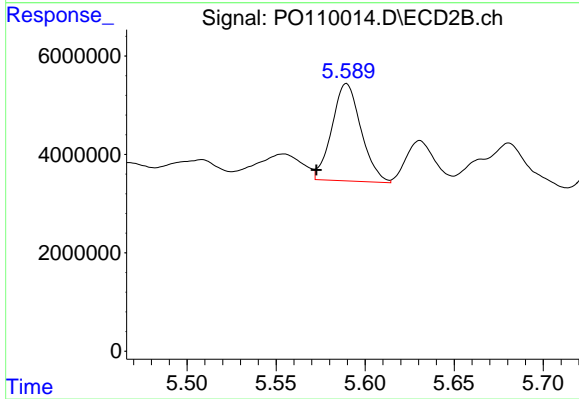
#25 AR-1248-5

R.T.: 5.631 min  
 Delta R.T.: 0.018 min  
 Response: 10185581  
 Conc: 49.00 ng/ml



#26 AR-1254-1

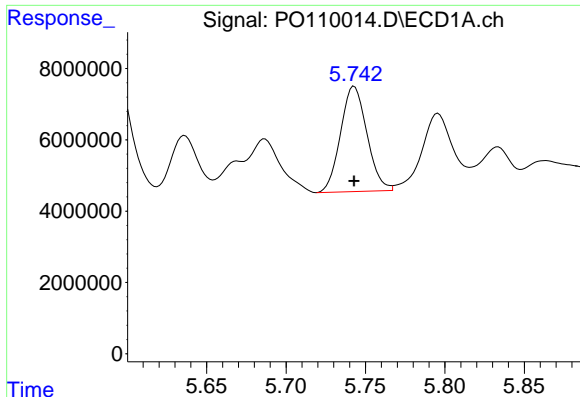
R.T.: 5.594 min  
 Delta R.T.: 0.000 min  
 Response: 36939596  
 Conc: 65.35 ng/ml



#26 AR-1254-1

R.T.: 5.590 min  
 Delta R.T.: 0.017 min  
 Response: 22574199  
 Conc: 72.19 ng/ml

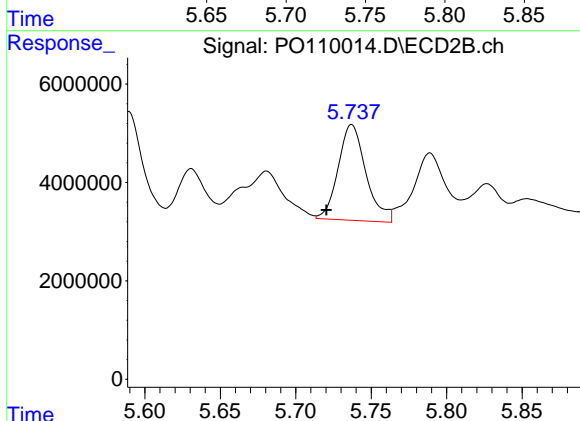




#27 AR-1254-2

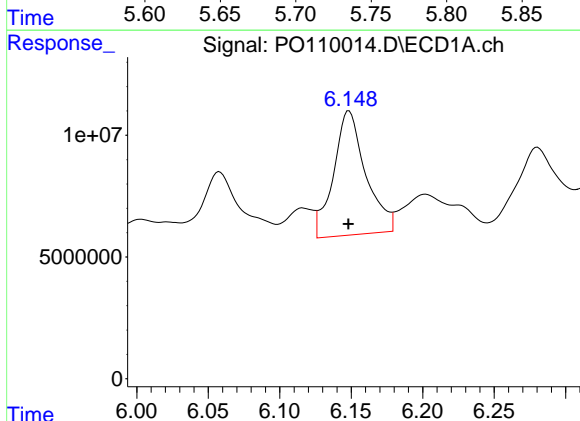
R.T.: 5.743 min  
 Delta R.T.: 0.000 min  
 Response: 34129340  
 Conc: 70.92 ng/ml

Instrument :  
 ECD\_O  
 ClientSampleId :  
 PAT-1-032525



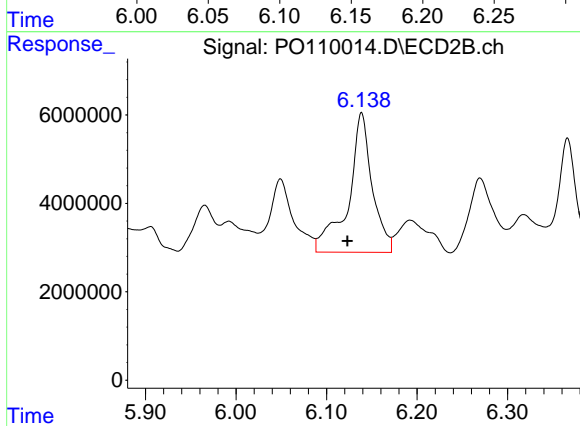
#27 AR-1254-2

R.T.: 5.737 min  
 Delta R.T.: 0.017 min  
 Response: 25024962  
 Conc: 92.16 ng/ml



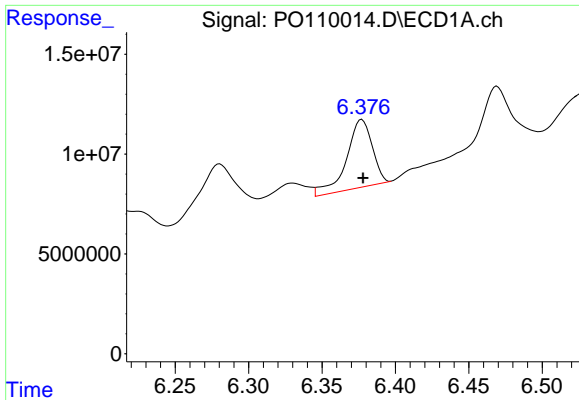
#28 AR-1254-3

R.T.: 6.149 min  
 Delta R.T.: 0.000 min  
 Response: 80078363  
 Conc: 103.58 ng/ml



#28 AR-1254-3

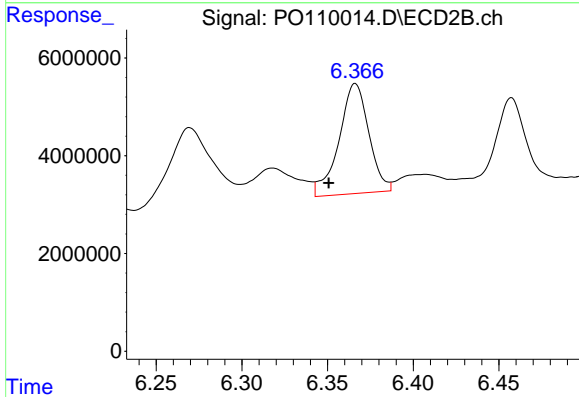
R.T.: 6.139 min  
 Delta R.T.: 0.016 min  
 Response: 57913198  
 Conc: 139.40 ng/ml



#29 AR-1254-4

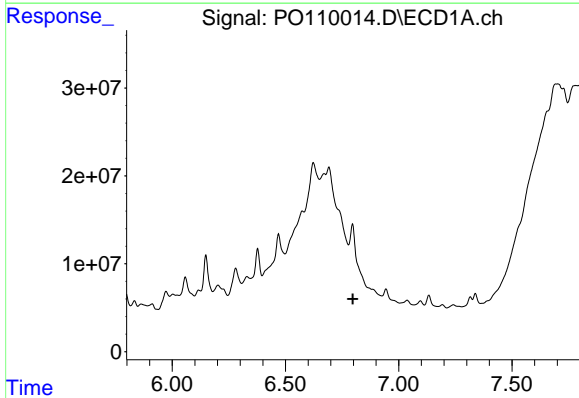
R.T.: 6.377 min  
 Delta R.T.: 0.000 min  
 Response: 41494143  
 Conc: 86.42 ng/ml

Instrument :  
 ECD\_O  
 ClientSampleId :  
 PAT-1-032525



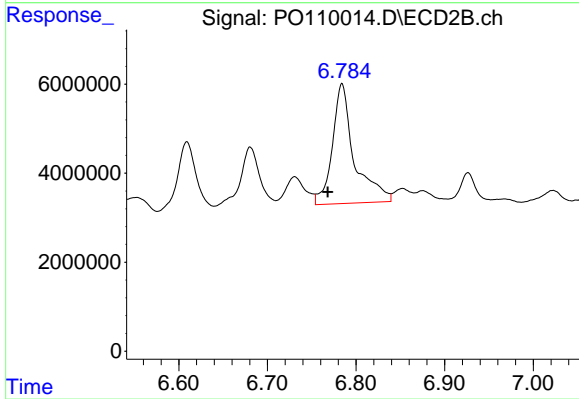
#29 AR-1254-4

R.T.: 6.366 min  
 Delta R.T.: 0.015 min  
 Response: 27309156  
 Conc: 112.58 ng/ml



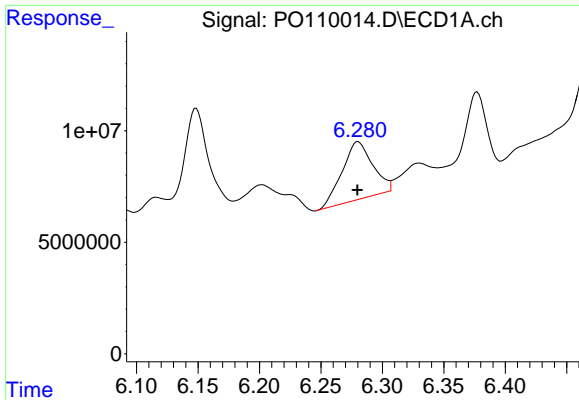
#30 AR-1254-5

R.T.: 6.796 min  
 Delta R.T.: 0.000 min  
 Response: -32664495  
 Conc: N.D.



#30 AR-1254-5

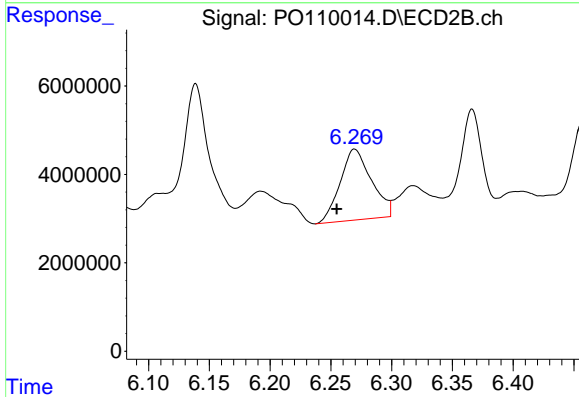
R.T.: 6.784 min  
 Delta R.T.: 0.016 min  
 Response: 46334382  
 Conc: 137.94 ng/ml



#31 AR-1260-1

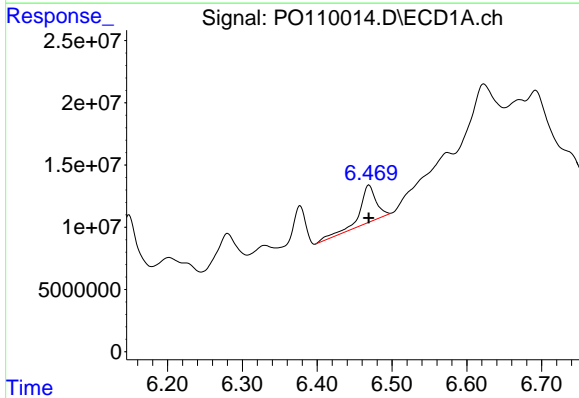
R.T.: 6.280 min  
 Delta R.T.: 0.000 min  
 Response: 44584959  
 Conc: 94.59 ng/ml

Instrument :  
 ECD\_O  
 ClientSampleId :  
 PAT-1-032525



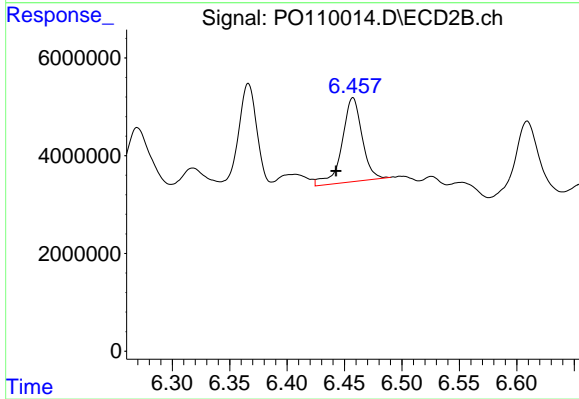
#31 AR-1260-1

R.T.: 6.270 min  
 Delta R.T.: 0.015 min  
 Response: 28759619  
 Conc: 112.59 ng/ml



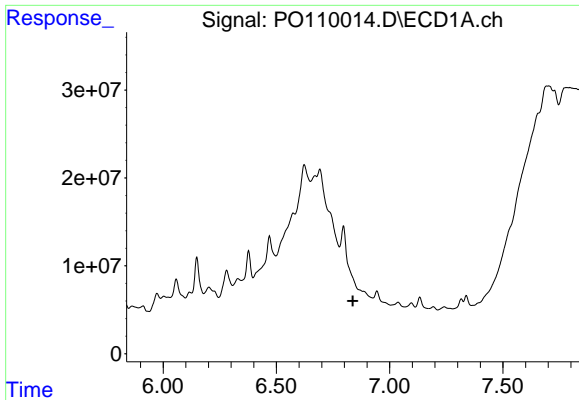
#32 AR-1260-2

R.T.: 6.469 min  
 Delta R.T.: 0.000 min  
 Response: 45307102  
 Conc: 76.08 ng/ml



#32 AR-1260-2

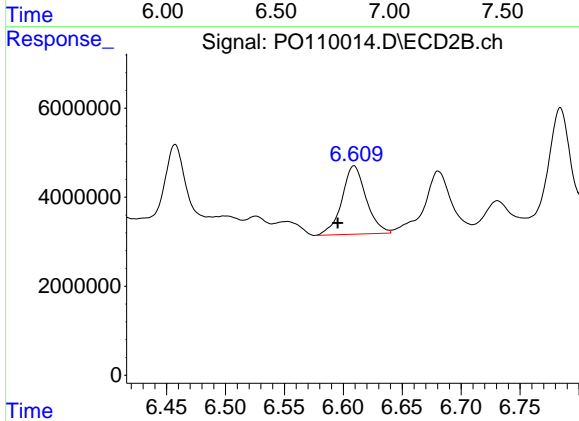
R.T.: 6.457 min  
 Delta R.T.: 0.015 min  
 Response: 20761169  
 Conc: 69.14 ng/ml



#33 AR-1260-3

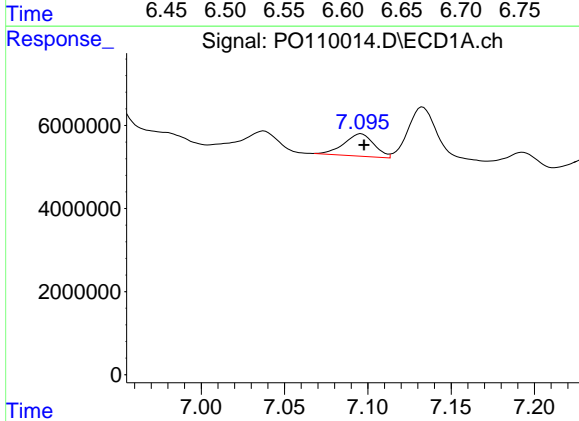
R.T.: 6.796 min  
 Delta R.T.: -0.041 min  
 Response: -32664495  
 Conc: N.D.

Instrument :  
 ECD\_O  
 ClientSampleId :  
 PAT-1-032525



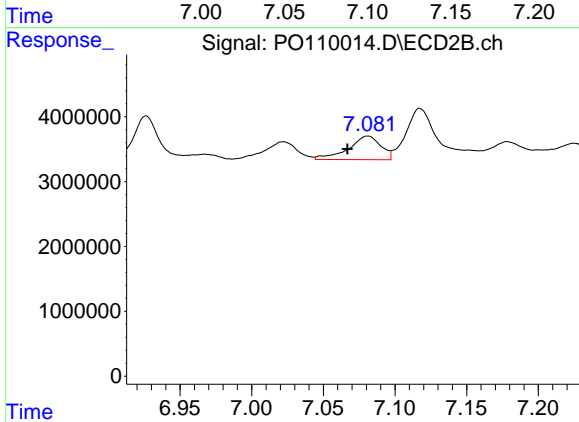
#33 AR-1260-3

R.T.: 6.609 min  
 Delta R.T.: 0.014 min  
 Response: 22074604  
 Conc: 76.39 ng/ml



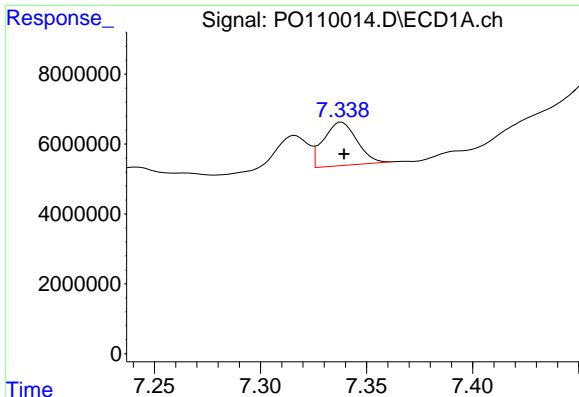
#34 AR-1260-4

R.T.: 7.096 min  
 Delta R.T.: -0.002 min  
 Response: 6750829  
 Conc: 15.92 ng/ml



#34 AR-1260-4

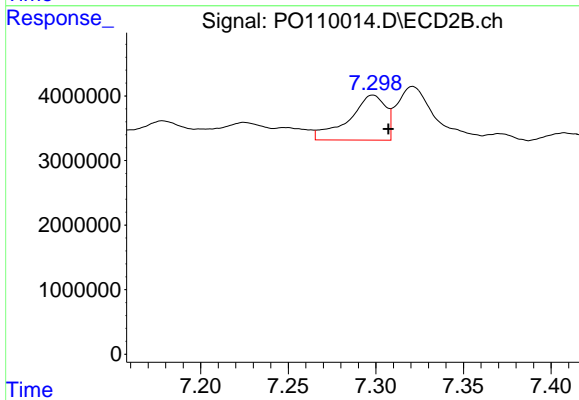
R.T.: 7.081 min  
 Delta R.T.: 0.014 min  
 Response: 5762876  
 Conc: 26.79 ng/ml



#35 AR-1260-5

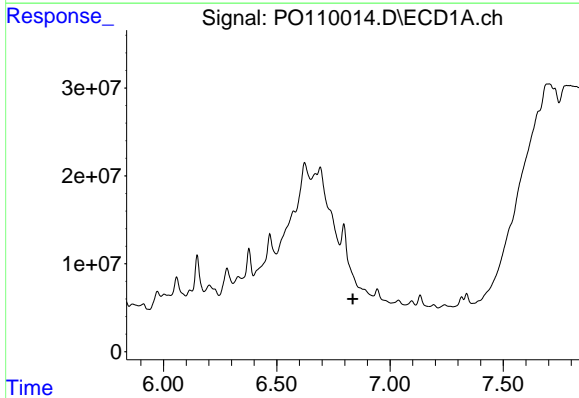
R.T.: 7.338 min  
 Delta R.T.: -0.001 min  
 Response: 13603369  
 Conc: 13.01 ng/ml

Instrument :  
 ECD\_O  
 ClientSampleId :  
 PAT-1-032525



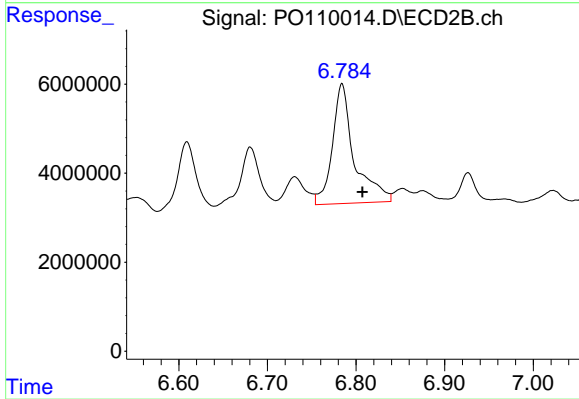
#35 AR-1260-5

R.T.: 7.298 min  
 Delta R.T.: -0.009 min  
 Response: 10190501  
 Conc: 20.43 ng/ml



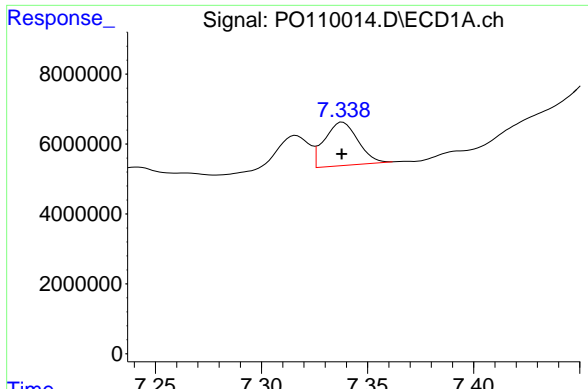
#36 AR-1262-1

R.T.: 6.796 min  
 Delta R.T.: -0.040 min  
 Response: -32664495  
 Conc: N.D.



#36 AR-1262-1

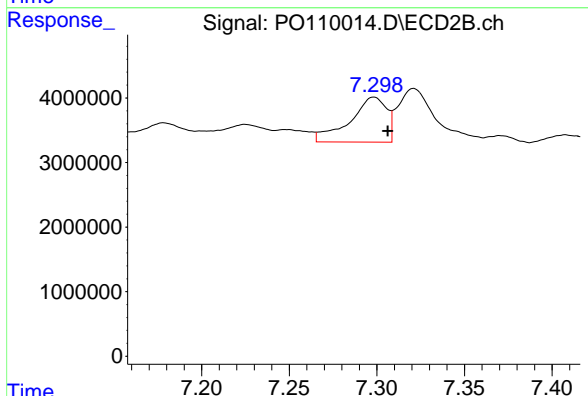
R.T.: 6.784 min  
 Delta R.T.: -0.023 min  
 Response: 46334382  
 Conc: 134.57 ng/ml



#37 AR-1262-2

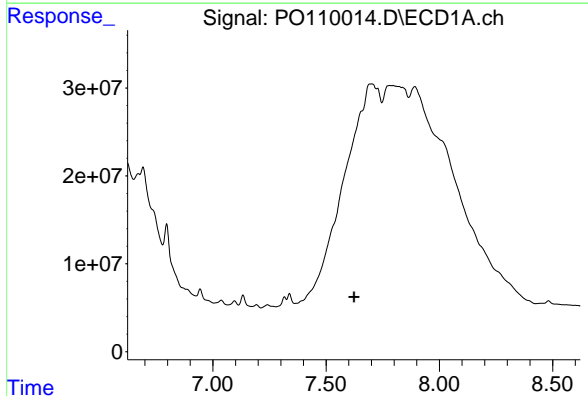
R.T.: 7.338 min  
 Delta R.T.: 0.000 min  
 Response: 13603369  
 Conc: 11.41 ng/ml

Instrument :  
 ECD\_O  
 ClientSampleId :  
 PAT-1-032525



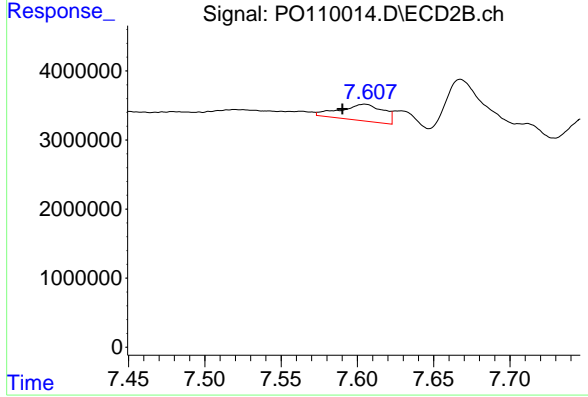
#37 AR-1262-2

R.T.: 7.298 min  
 Delta R.T.: -0.008 min  
 Response: 10190501  
 Conc: 18.97 ng/ml



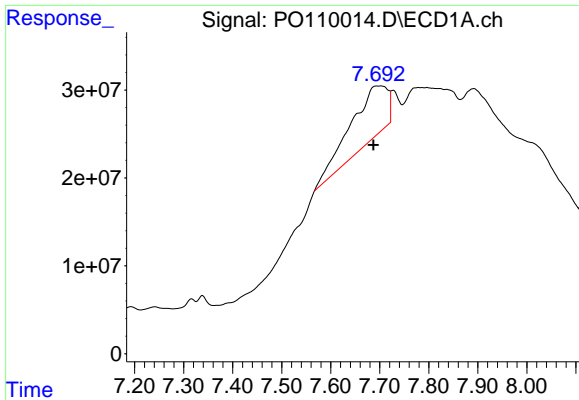
#38 AR-1262-3

R.T.: 0.000 min  
 Exp R.T. : 7.623 min  
 Response: 0  
 Conc: N.D.



#38 AR-1262-3

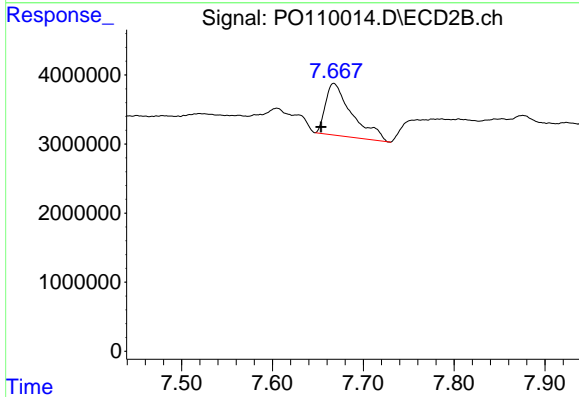
R.T.: 7.605 min  
 Delta R.T.: 0.015 min  
 Response: 4728717  
 Conc: 24.37 ng/ml



#39 AR-1262-4

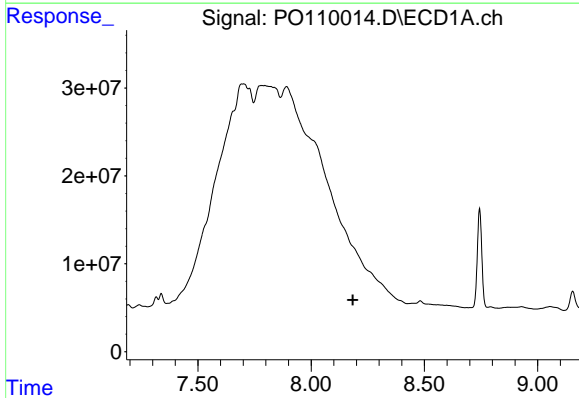
R.T.: 7.703 min  
 Delta R.T.: 0.015 min  
 Response: 314243184  
 Conc: 359.31 ng/ml

Instrument :  
 ECD\_O  
 ClientSampleId :  
 PAT-1-032525



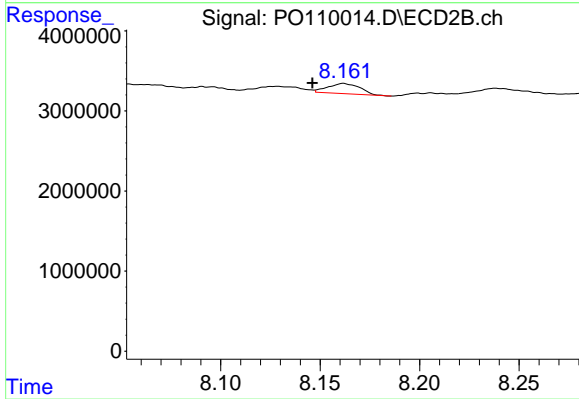
#39 AR-1262-4

R.T.: 7.668 min  
 Delta R.T.: 0.014 min  
 Response: 15090891  
 Conc: 41.71 ng/ml



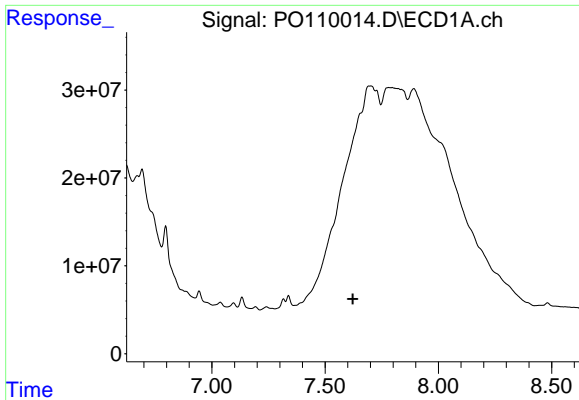
#40 AR-1262-5

R.T.: 0.000 min  
 Exp R.T. : 8.184 min  
 Response: 0  
 Conc: N.D.



#40 AR-1262-5

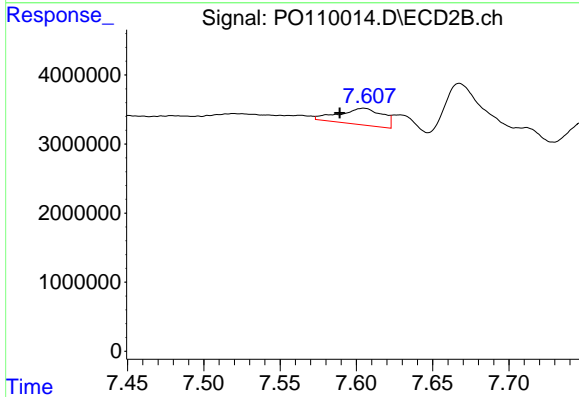
R.T.: 8.162 min  
 Delta R.T.: 0.016 min  
 Response: 1427651  
 Conc: 10.11 ng/ml



#41 AR-1268-1

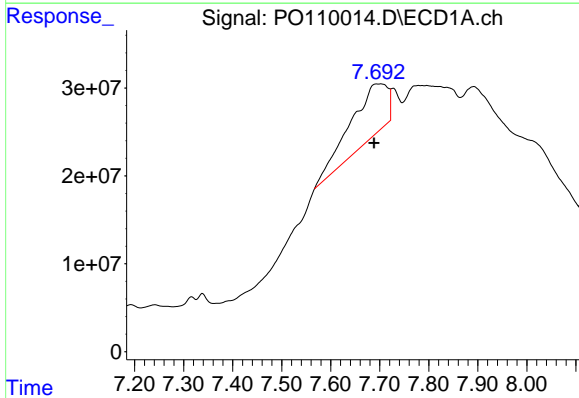
R.T.: 0.000 min  
 Exp R.T.: 7.622 min  
 Response: 0  
 Conc: N.D.

Instrument :  
 ECD\_O  
 ClientSampleId :  
 PAT-1-032525



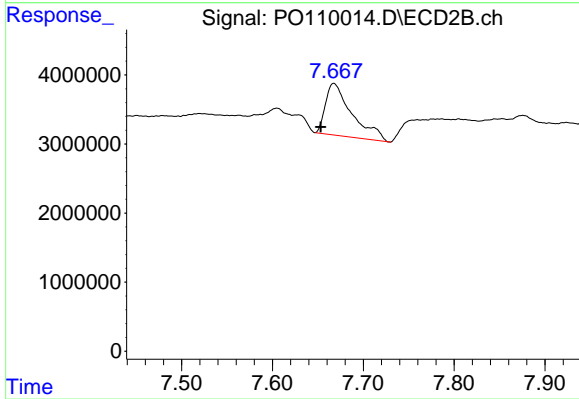
#41 AR-1268-1

R.T.: 7.605 min  
 Delta R.T.: 0.016 min  
 Response: 4728717  
 Conc: 8.08 ng/ml



#42 AR-1268-2

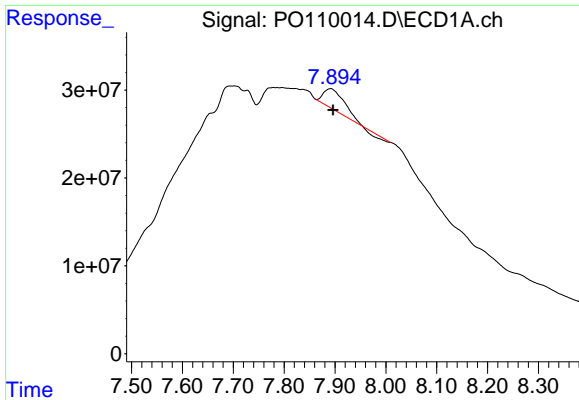
R.T.: 7.703 min  
 Delta R.T.: 0.014 min  
 Response: 314243184  
 Conc: 245.47 ng/ml



#42 AR-1268-2

R.T.: 7.668 min  
 Delta R.T.: 0.014 min  
 Response: 15090891  
 Conc: 28.07 ng/ml

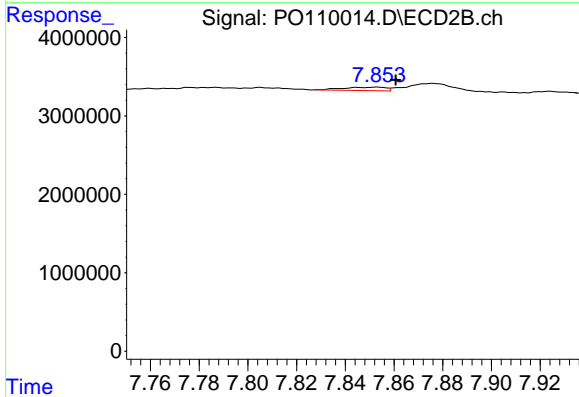




#43 AR-1268-3

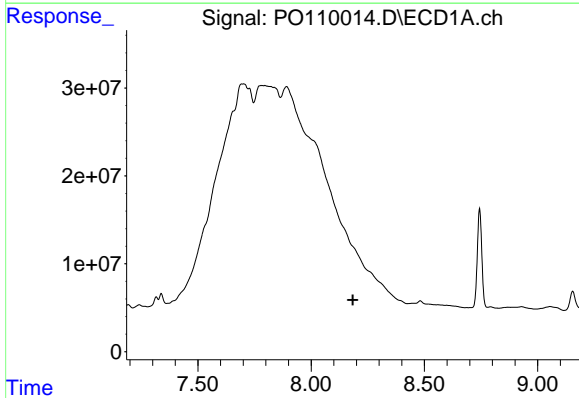
R.T.: 7.892 min  
 Delta R.T.: -0.004 min  
 Response: 55178522  
 Conc: 53.70 ng/ml

Instrument :  
 ECD\_O  
 ClientSampleId :  
 PAT-1-032525



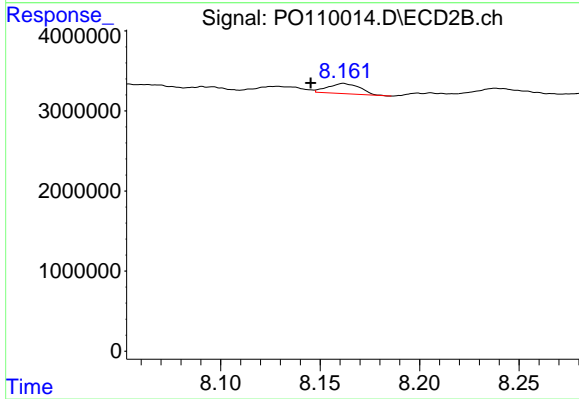
#43 AR-1268-3

R.T.: 7.853 min  
 Delta R.T.: -0.008 min  
 Response: 541499  
 Conc: 1.30 ng/ml



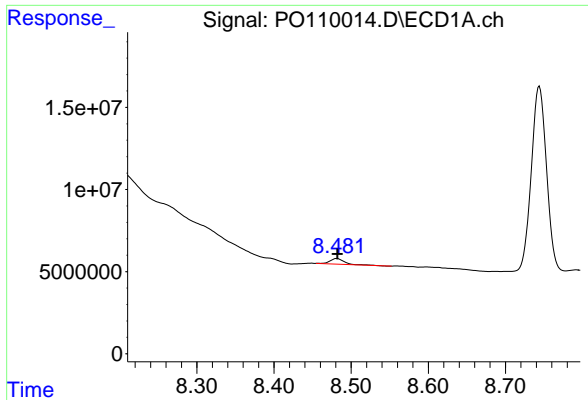
#44 AR-1268-4

R.T.: 0.000 min  
 Exp R.T. : 8.185 min  
 Response: 0  
 Conc: N.D.



#44 AR-1268-4

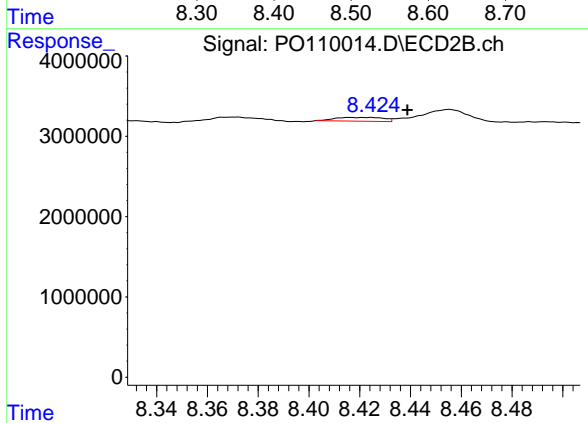
R.T.: 8.162 min  
 Delta R.T.: 0.017 min  
 Response: 1427651  
 Conc: 8.87 ng/ml



#45 AR-1268-5

R.T.: 8.482 min  
 Delta R.T.: 0.000 min  
 Response: 4439163  
 Conc: 1.40 ng/ml

Instrument :  
 ECD\_O  
 ClientSampleId :  
 PAT-1-032525



#45 AR-1268-5

R.T.: 8.424 min  
 Delta R.T.: -0.015 min  
 Response: 637680  
 Conc: 0.64 ng/ml