

Data Path : Z:\pestpcbsrv\HPCHEM1\ECD_0\Data\P0032723\
 Data File : P0093579.D
 Signal(s) : Signal #1: ECD1A.ch Signal #2: ECD2B.ch
 Acq On : 27 Mar 2023 15:26
 Operator : YP/AJ
 Sample : 02082-01
 Misc :
 ALS Vial : 14 Sample Multiplier: 1

Instrument :
 ECD_0
ClientSampleId :
 ETGI-276

Manual Integrations
APPROVED

Reviewed By :Yogesh Patel 03/28/2023
 Supervised By :Ankita Jodhani 03/28/2023

Integration File signal 1: autoint1.e
 Integration File signal 2: autoint2.e
 Quant Time: Mar 27 21:18:56 2023
 Quant Method : Z:\pestpcbsrv\HPCHEM1\ECD_0\methods\P0031323.M
 Quant Title : GC EXTRACTABLES
 QLast Update : Tue Mar 14 05:32:59 2023
 Response via : Initial Calibration
 Integrator: ChemStation

Volume Inj. : 2 µl
 Signal #1 Phase : ZB-MR1 Signal #2 Phase: ZB-MR2
 Signal #1 Info : 30Mx0.32mmx 0.50µ Signal #2 Info : 30M x 0.32mm x 0.25µm

Compound	RT#1	RT#2	Resp#1	Resp#2	ng/ml	ng/ml

System Monitoring Compounds						
1) SA Tetrachlo...	4.427	3.631	66266238	25171042	21.161	22.317m
2) SA Decachlor...	10.258	8.658	50253540	22726394	23.219	23.211

Target Compounds

(f)=RT Delta > 1/2 Window (#)=Amounts differ by > 25% (m)=manual int.

Data Path : Z:\pestpcbsrv\HPCHEM1\ECD_0\Data\P0032723\
 Data File : P0093579.D
 Signal(s) : Signal #1: ECD1A.ch Signal #2: ECD2B.ch
 Acq On : 27 Mar 2023 15:26
 Operator : YP/AJ
 Sample : 02082-01
 Misc :
 ALS Vial : 14 Sample Multiplier: 1

Instrument :

ECD_0

ClientSampleId :

ETGI-276

Manual Integrations

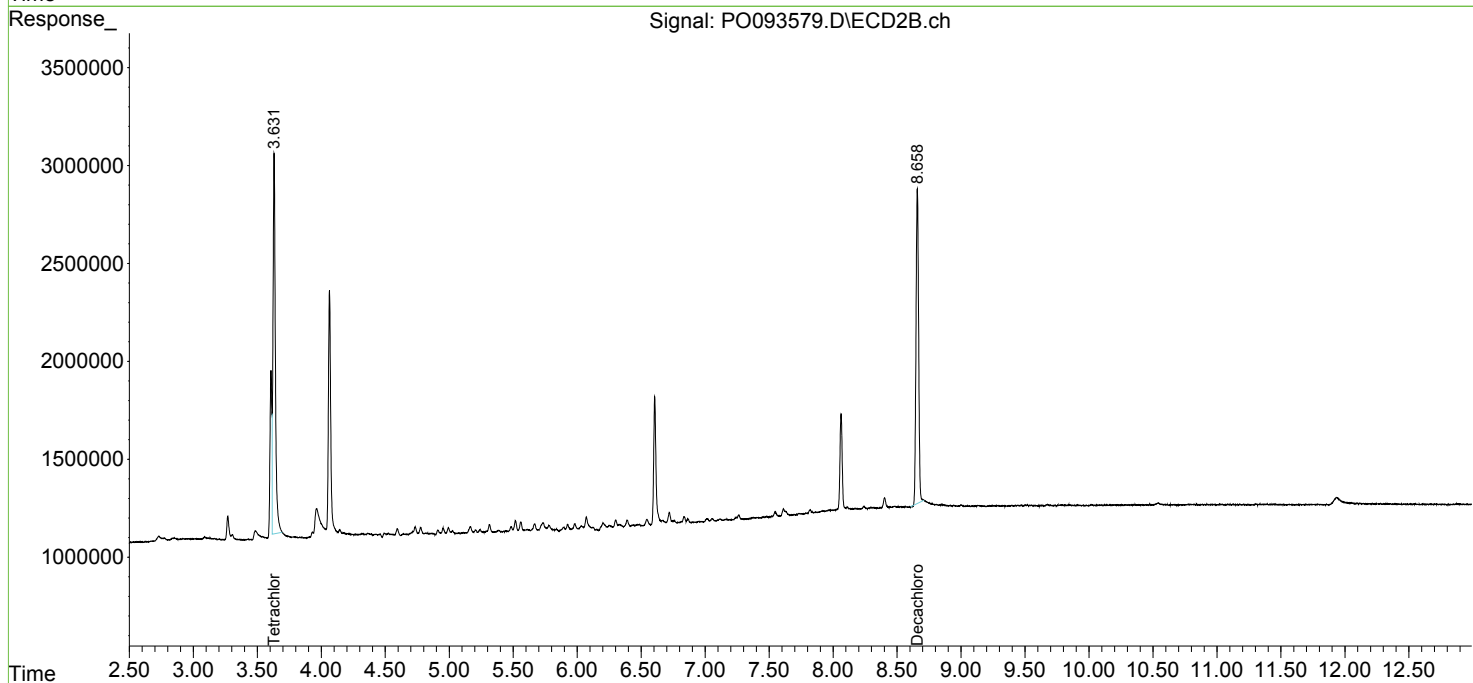
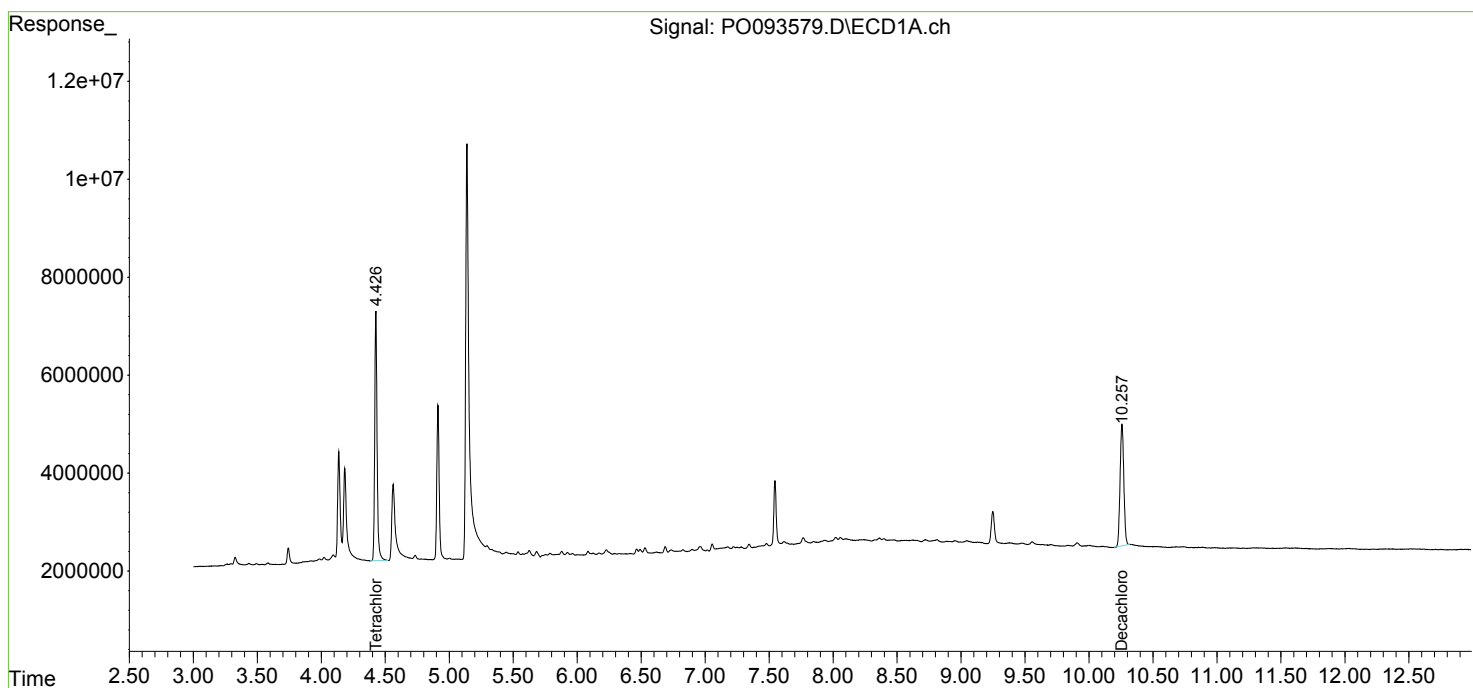
APPROVED

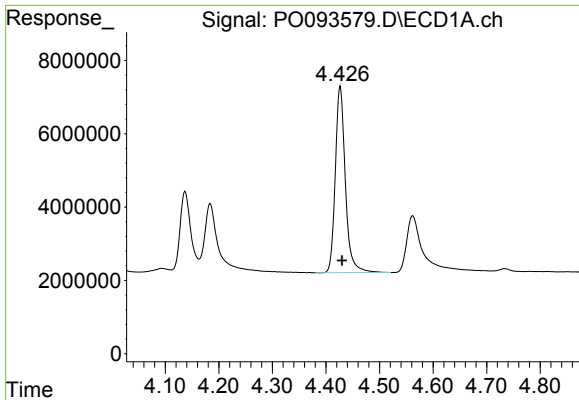
Reviewed By :Yogesh Patel 03/28/2023

Supervised By :Ankita Jodhani 03/28/2023

Integration File signal 1: autoint1.e
 Integration File signal 2: autoint2.e
 Quant Time: Mar 27 21:18:56 2023
 Quant Method : Z:\pestpcbsrv\HPCHEM1\ECD_0\methods\P0031323.M
 Quant Title : GC EXTRACTABLES
 QLast Update : Tue Mar 14 05:32:59 2023
 Response via : Initial Calibration
 Integrator: ChemStation

Volume Inj. : 2 µl
 Signal #1 Phase : ZB-MR1 Signal #2 Phase: ZB-MR2
 Signal #1 Info : 30Mx0.32mmx 0.50µ Signal #2 Info : 30M x 0.32mm x 0.25µm





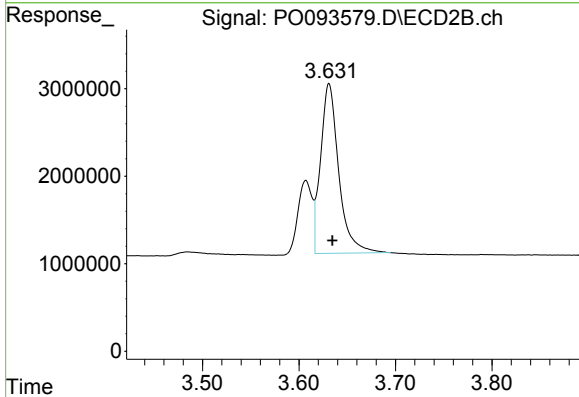
#1 Tetrachloro-m-xylene

R.T.: 4.427 min
 Delta R.T.: -0.003 min
 Response: 66266238
 Conc: 21.16 ng/ml

Instrument :
 ECD_O
 ClientSampleId :
 ETGI-276

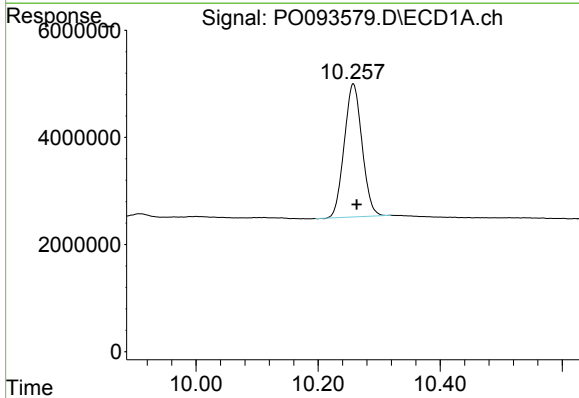
Manual Integrations
 APPROVED

Reviewed By :Yogesh Patel 03/28/2023
 Supervised By :Ankita Jodhani 03/28/2023



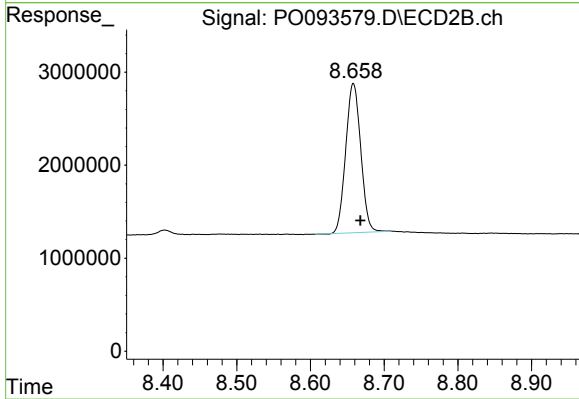
#1 Tetrachloro-m-xylene

R.T.: 3.631 min
 Delta R.T.: -0.004 min
 Response: 25171042
 Conc: 22.32 ng/ml m



#2 Decachlorobiphenyl

R.T.: 10.258 min
 Delta R.T.: -0.005 min
 Response: 50253540
 Conc: 23.22 ng/ml



#2 Decachlorobiphenyl

R.T.: 8.658 min
 Delta R.T.: -0.010 min
 Response: 22726394
 Conc: 23.21 ng/ml